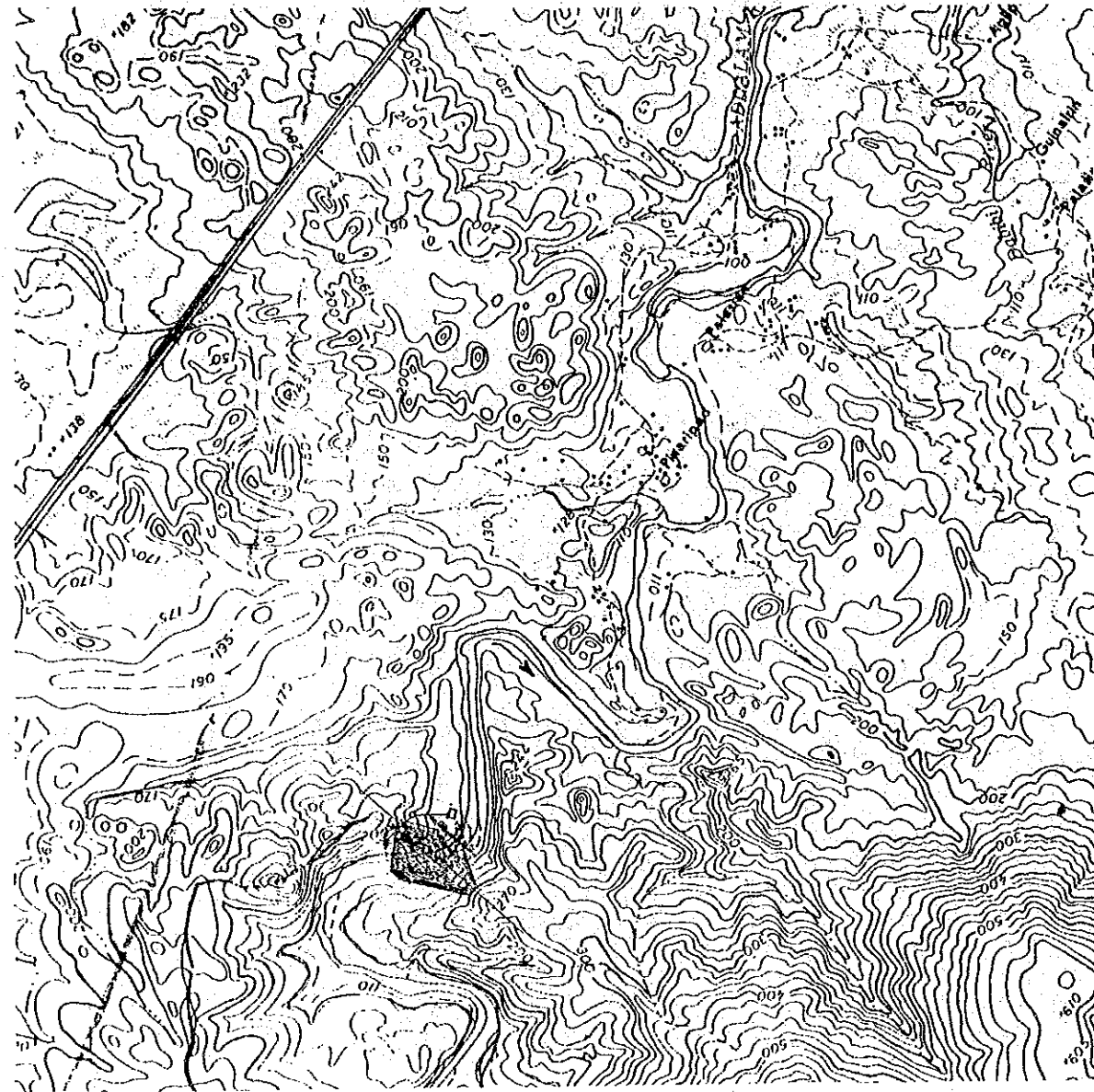


General Development Plan

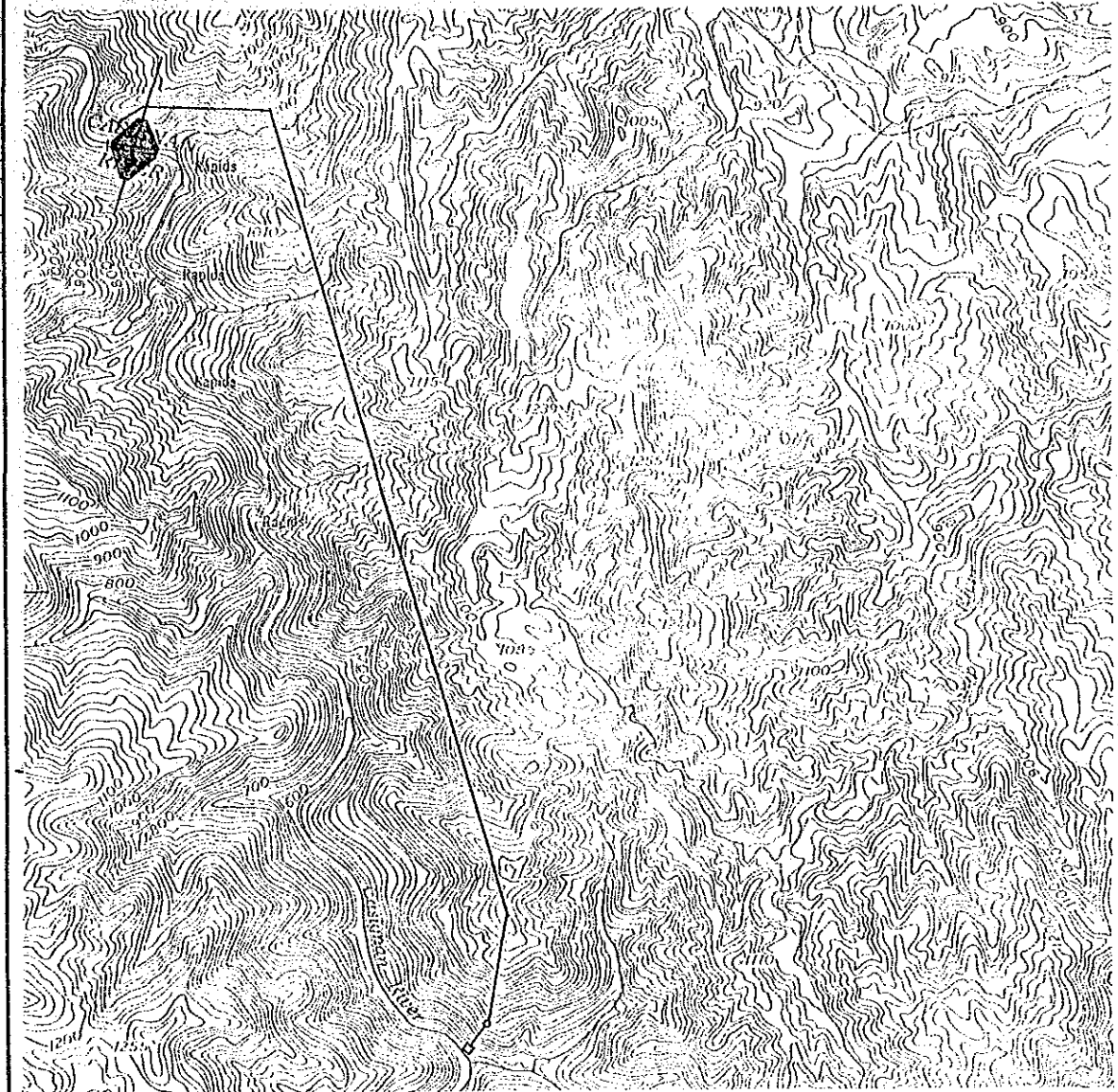


Scheme Name : PINARIPAD
 ID No. : 2-008-26-50-0-1
 Type of Development : RESERVOIR
 Ref. Map No. : 3369-III

Catchment Area(km²) : 851.1
 Dam Height(m) : 86.7
 Plant Max. Discharge(m³/s) : 142.6
 Installed Capacity(MW) : 78.7
 Annual Energy Output(GWh) : 216.0

NATIONAL POWER CORPORATION
 STUDY ON HYDROPOWER POTENTIALS
 IN LUZON ISLAND
 JAPAN INTERNATIONAL COOPERATION AGENCY

General Development Plan

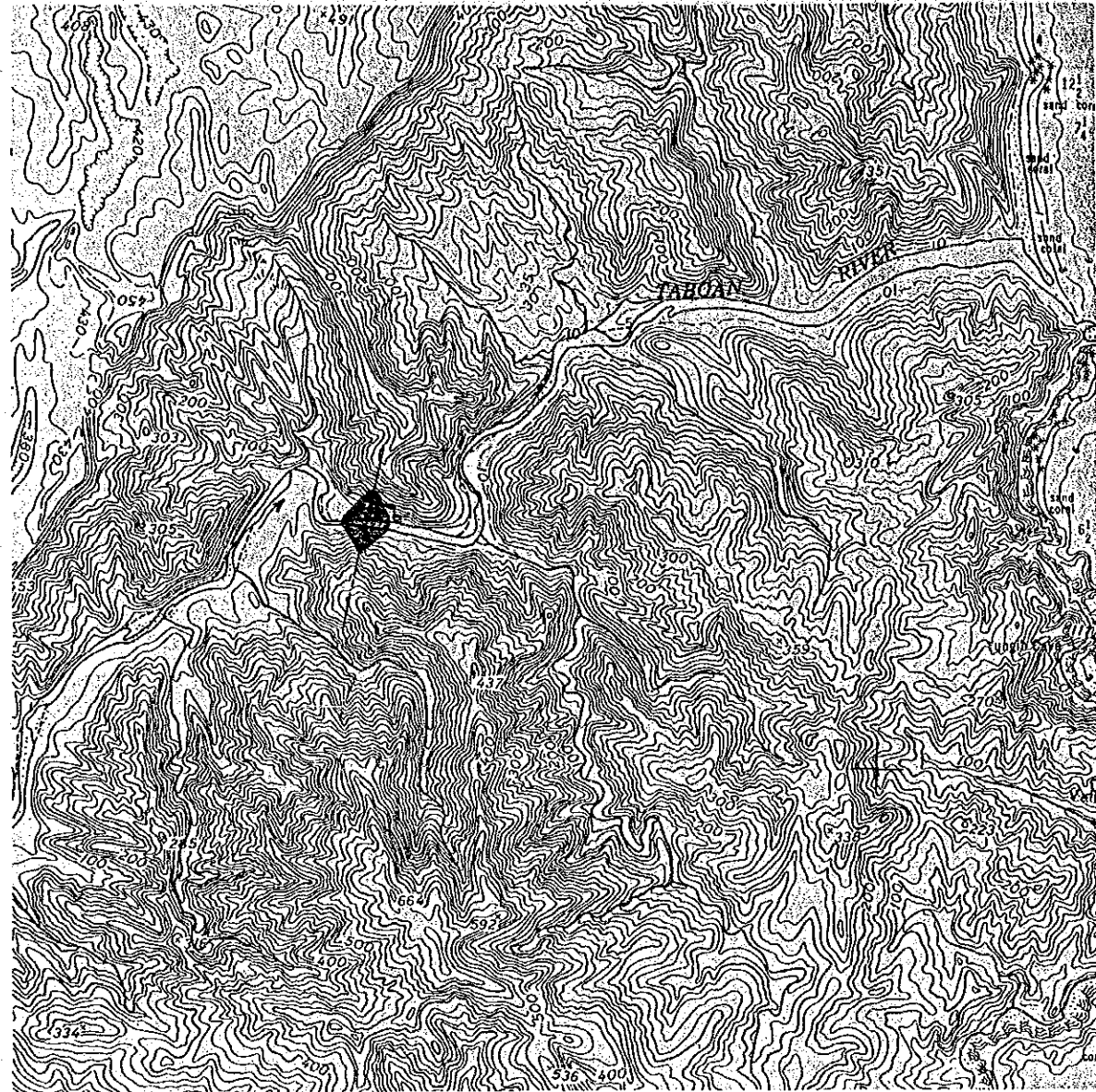


Scheme Name : UPPER CASECNAN-2
 ID No. : 2-008-29-60-0-1
 Type of Development : RESERVOIR
 Ref. Map No. : 3268-II

Catchment Area(km²) : 243.0
 Dam Height(m) : 121.0
 Plant Max. Discharge(m³/s) : 39.8
 Installed Capacity(MW) : 64.0
 Annual Energy Output(GWh) : 174.9

NATIONAL POWER CORPORATION
 STUDY ON HYDROPOWER POTENTIALS
 IN LUZON ISLAND
 JAPAN INTERNATIONAL COOPERATION AGENCY

General Development Plan

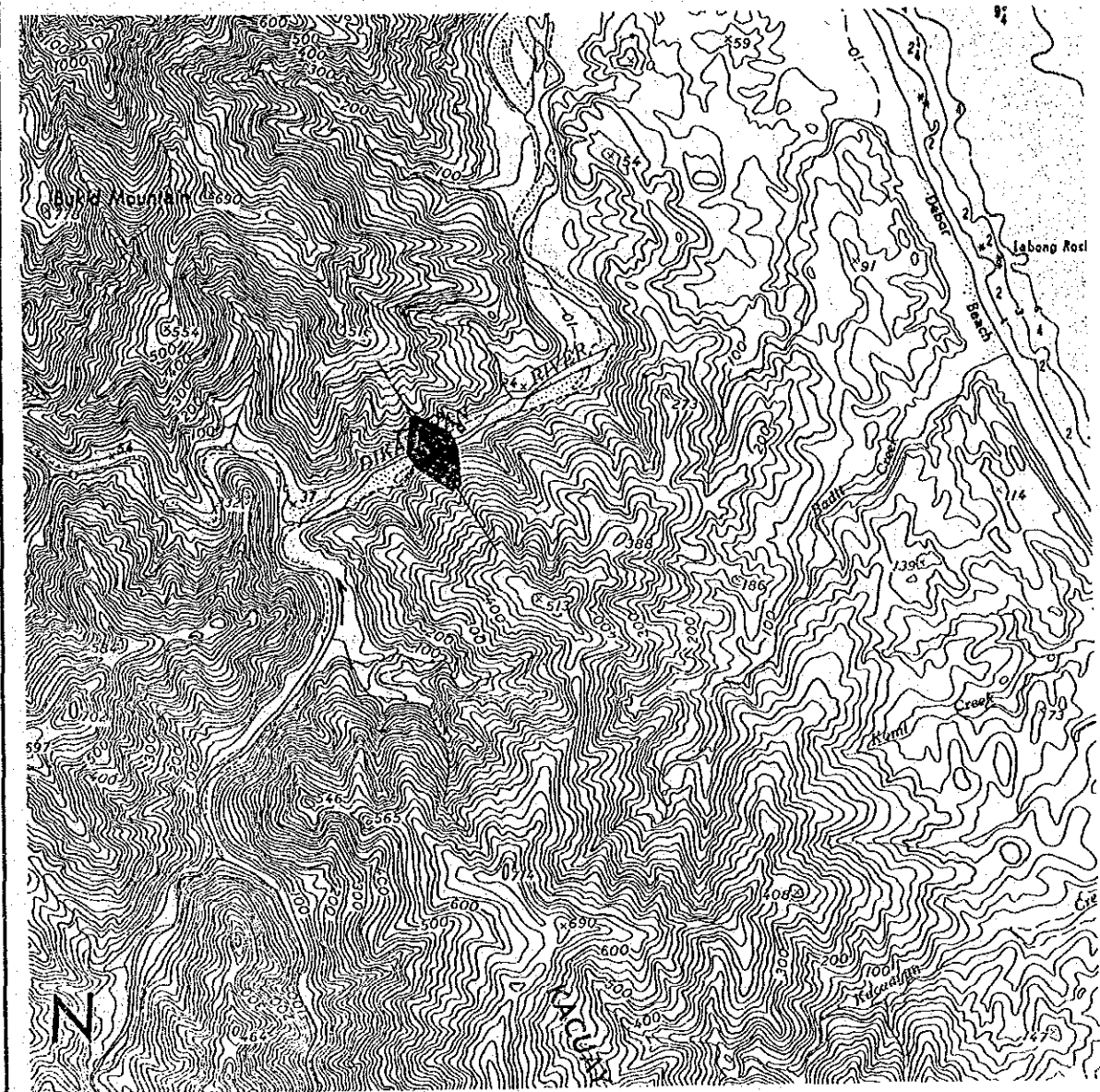


Scheme Name : TABOAN
 ID No. : 2-032-00-01-0-1
 Type of Development : RESERVOIR
 Ref. Map No. : 3473-IV

Catchment Area(km²) : 332.1
 Dam Height(m) : 99.9
 Plant Max. Discharge(m³/s) : 76.0
 Installed Capacity(MW) : 50.3
 Annual Energy Output(GWh) : 152.5

NATIONAL POWER CORPORATION
 STUDY ON HYDROPOWER POTENTIALS
 IN LUZON ISLAND
 JAPAN INTERNATIONAL COOPERATION AGENCY

General Development Plan



Scheme Name : DIKATAYAN
 ID No. : 2-039-00-01-0-1
 Type of Development : RESERVOIR
 Ref. Map No. : 3472-III

Catchment Area(km²) : 222.2
 Dam Height(m) : 157.0
 Plant Max. Discharge(m³/s) : 110.9
 Installed Capacity(MW) : 117.5
 Annual Energy Output(GWh) : 239.8

NATIONAL POWER CORPORATION
 STUDY ON HYDROPOWER POTENTIALS
 IN LUZON ISLAND
 JAPAN INTERNATIONAL COOPERATION AGENCY

General Development Plan

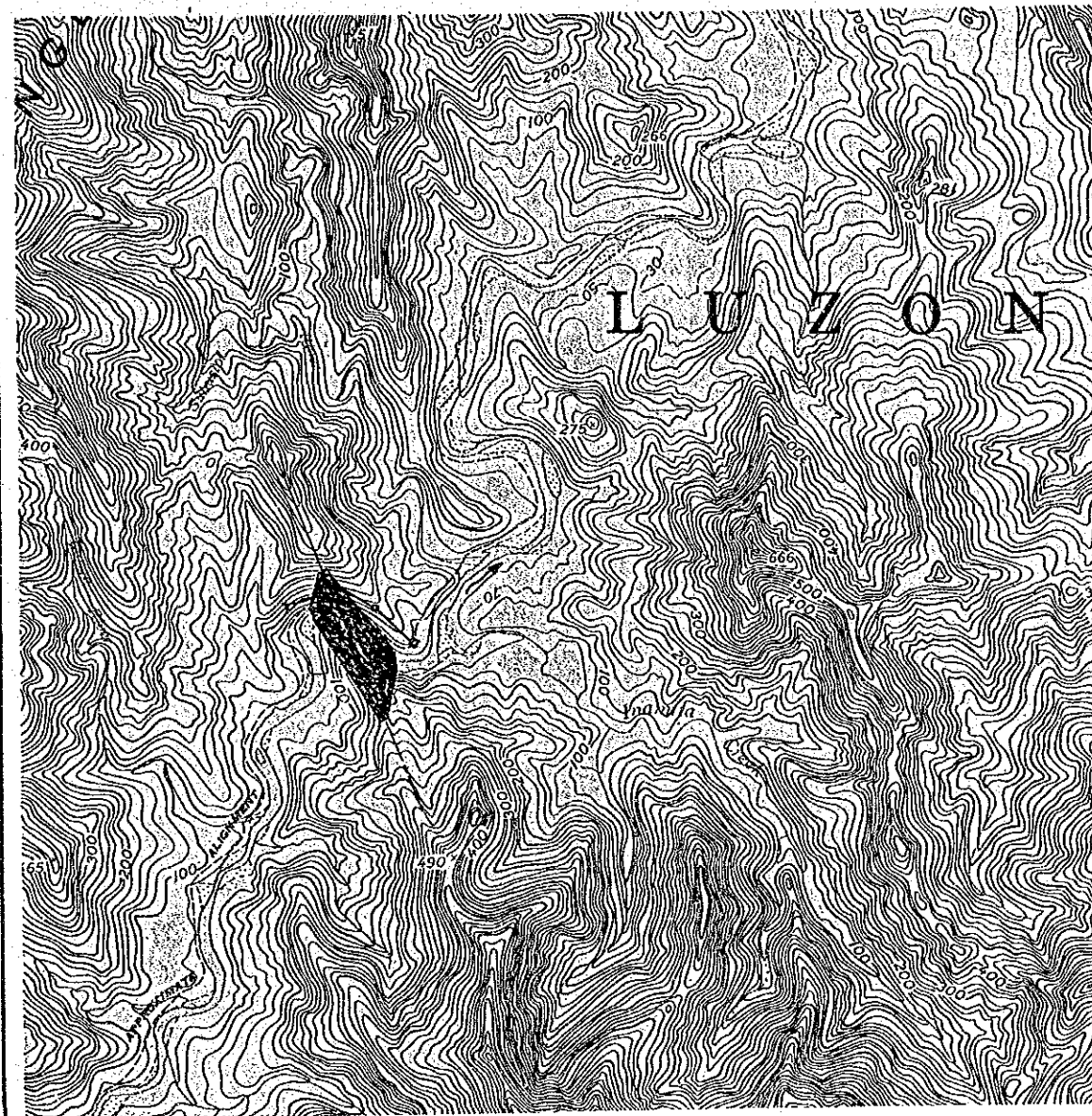


Scheme Name : PALANAN
 ID No. : 2-047-00-01-0-1
 Type of Development : RESERVOIR
 Ref. Map No. : 3470-1

Catchment Area(km²) : 358.0
 Dam Height(m) : 65.0
 Plant Max. Discharge(m³/s) : 56.4
 Installed Capacity(MW) : 23.4
 Annual Energy Output(GWh) : 65.2

NATIONAL POWER CORPORATION
 STUDY ON HYDROPOWER POTENTIALS
 IN LUZON ISLAND
 JAPAN INTERNATIONAL COOPERATION AGENCY

General Development Plan

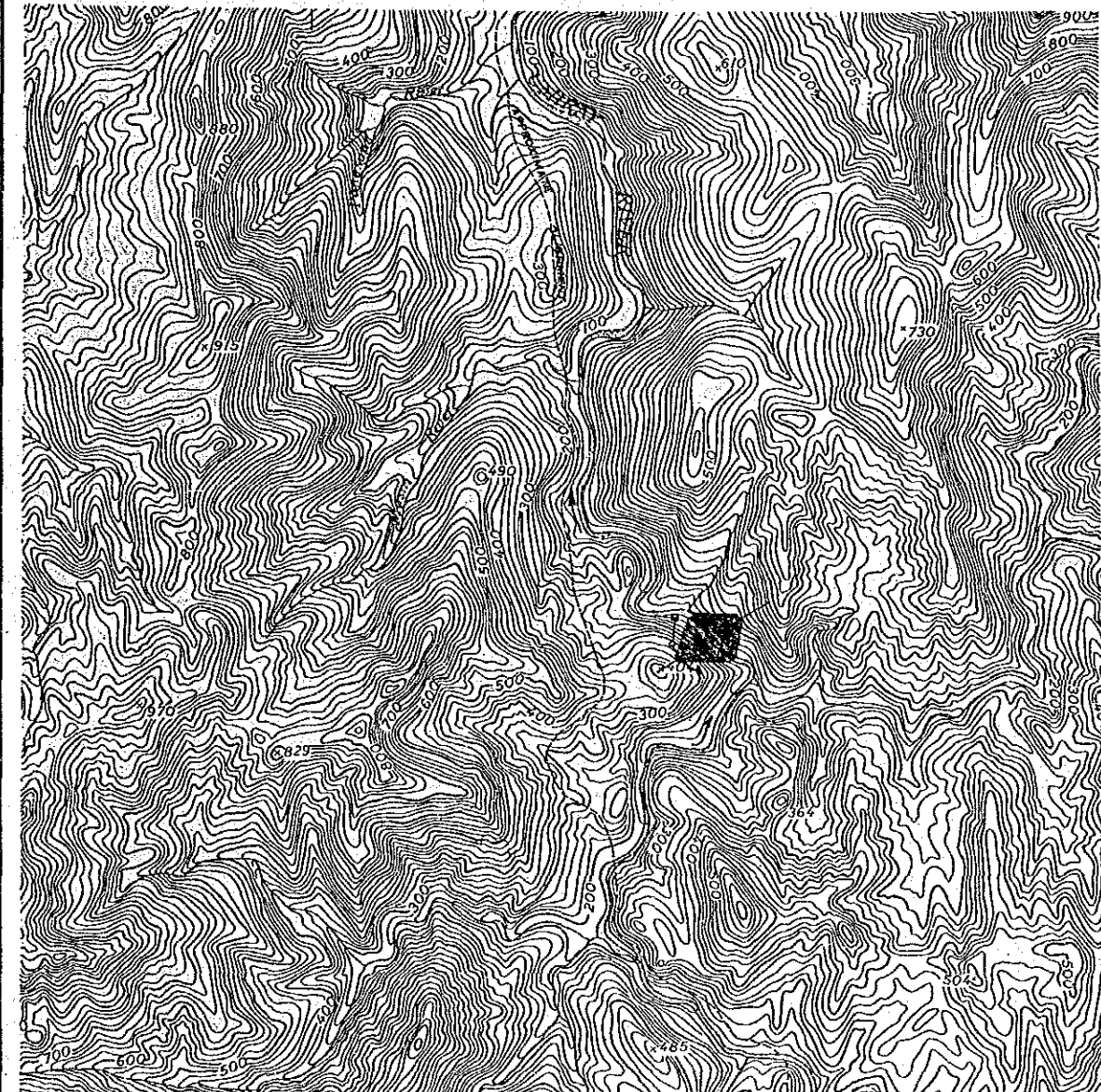


Scheme Name : UMIRAY-3
 ID No. : 3-023-00-01-0-1
 Type of Development : RESERVOIR
 Ref. Map No. : 3265-11

Catchment Area(km²) : 335.0
 Dam Height(m) : 147.0
 Plant Max. Discharge(m³/s) : 158.6
 Installed Capacity(MW) : 153.7
 Annual Energy Output(GWh) : 392.8

NATIONAL POWER CORPORATION
 STUDY ON HYDROPOWER POTENTIALS
 IN LUZON ISLAND
 JAPAN INTERNATIONAL COOPERATION AGENCY

General Development Plan

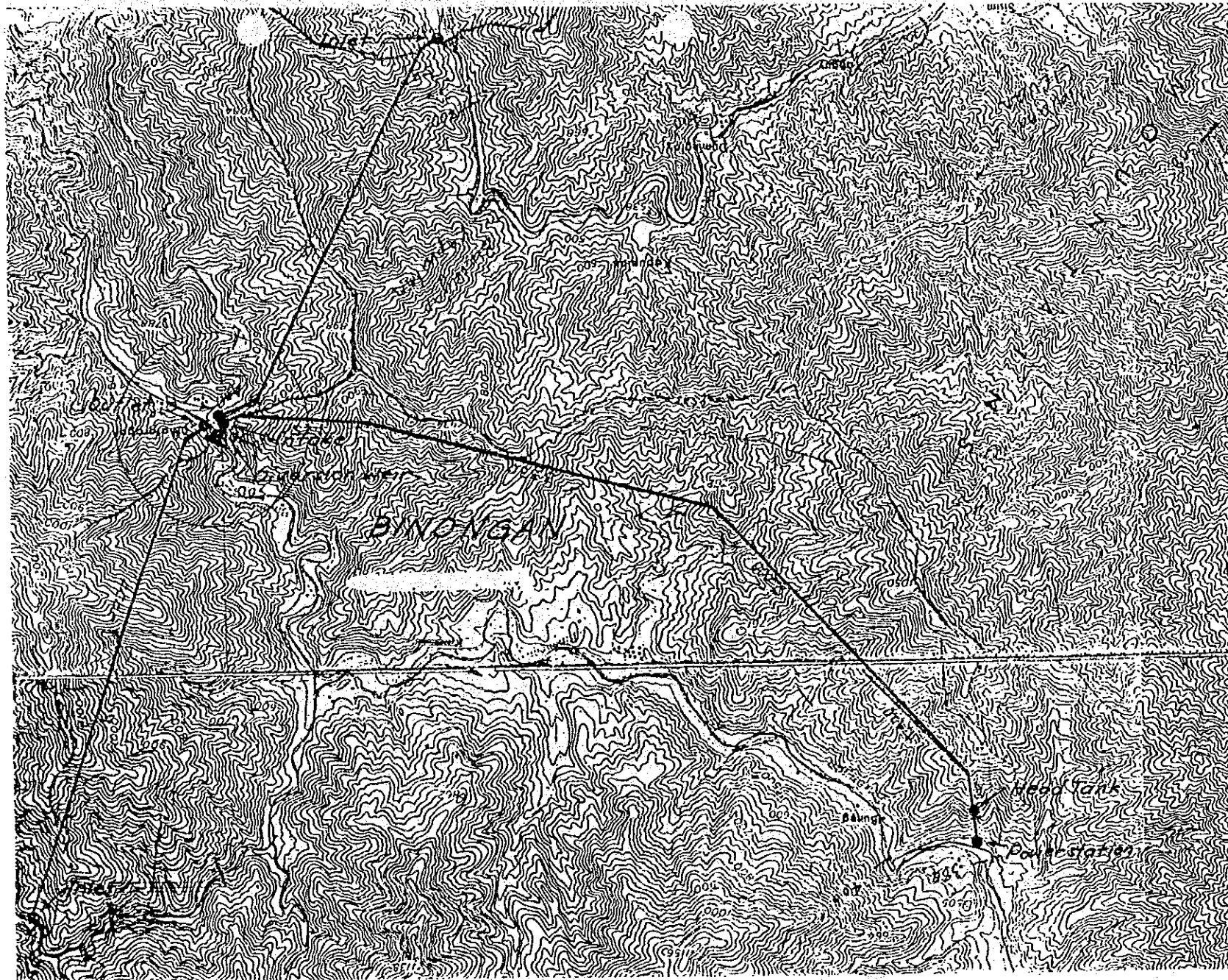


Scheme Name : UPPER UMIRAY
ID No. : 3-023-00-02-0-1
Type of Development : RESERVOIR
Ref. Map No. : 3264-1

Catchment Area(km²) : 211.4
Dam Height(m) : 191.0
Plant Max. Discharge(m³/s) : 164.1
Installed Capacity(MW) : 216.1
Annual Energy Output(GWh) : 358.1

NATIONAL POWER CORPORATION
STUDY ON HYDROPOWER POTENTIALS IN LUZON ISLAND
JAPAN INTERNATIONAL COOPERATION AGENCY

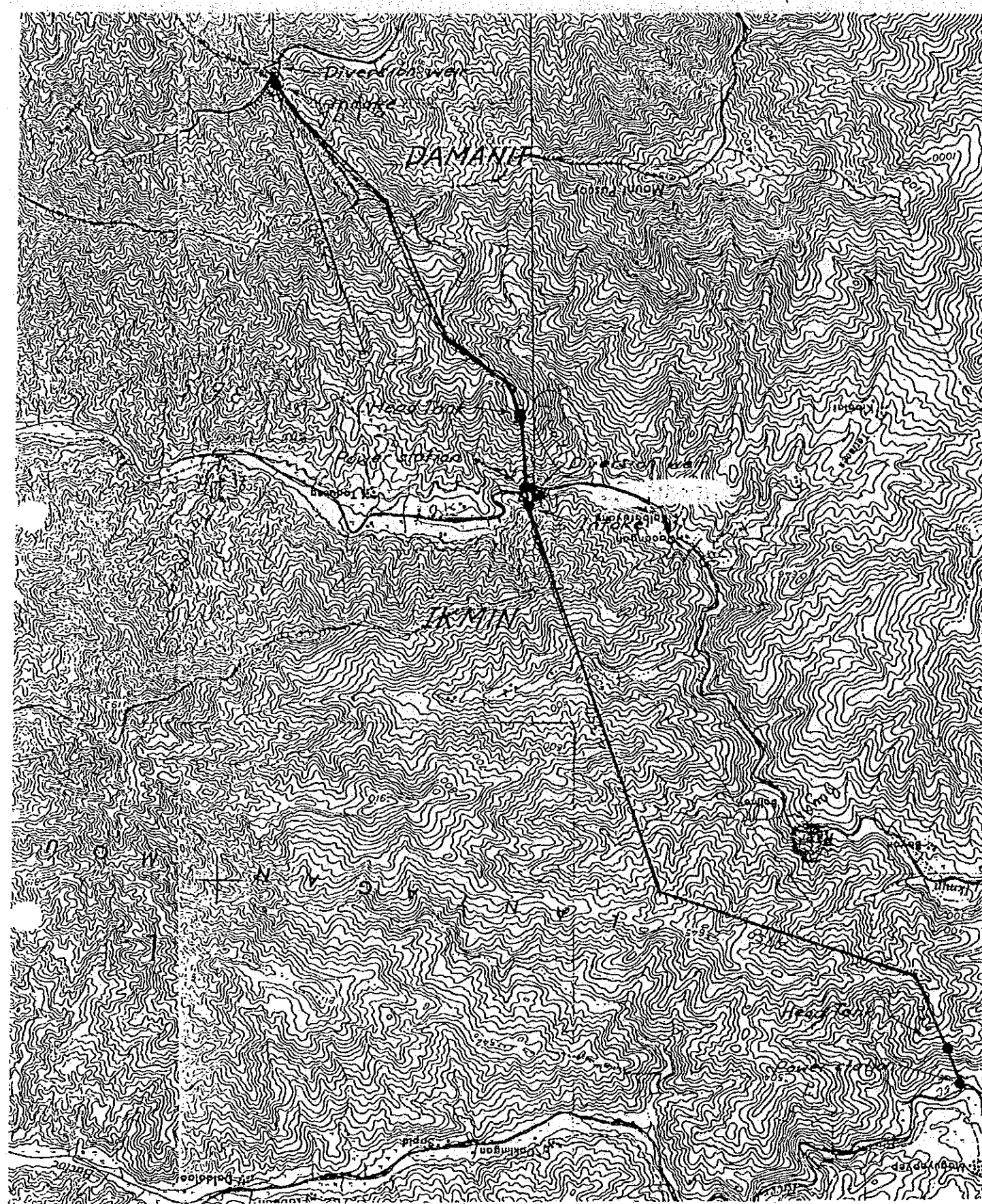
General Development Plan



Scheme Name : BINONGAN-R
ID No. : 1-022-02-15-0-2
Type of Development : RUN-OF-RIVER
Ref. Map No. : 3172-1

Catchment Area(km²) : 296.9
Dam Height(m) : 8.5
Plant Max. Discharge(m³/s) : 6.2
Installed Capacity(MW) : 5.7
Annual Energy Output(GWh) : 37.5

NATIONAL POWER CORPORATION
STUDY ON HYDROPOWER POTENTIALS IN LUZON ISLAND
JAPAN INTERNATIONAL COOPERATION AGENCY



General Development Plan

Scheme Name : DAMANIT
 ID No. : 1-022-06-27-0-2
 Type of Development : RUN-OF-RIVER
 Ref. Map No. : 3172-III

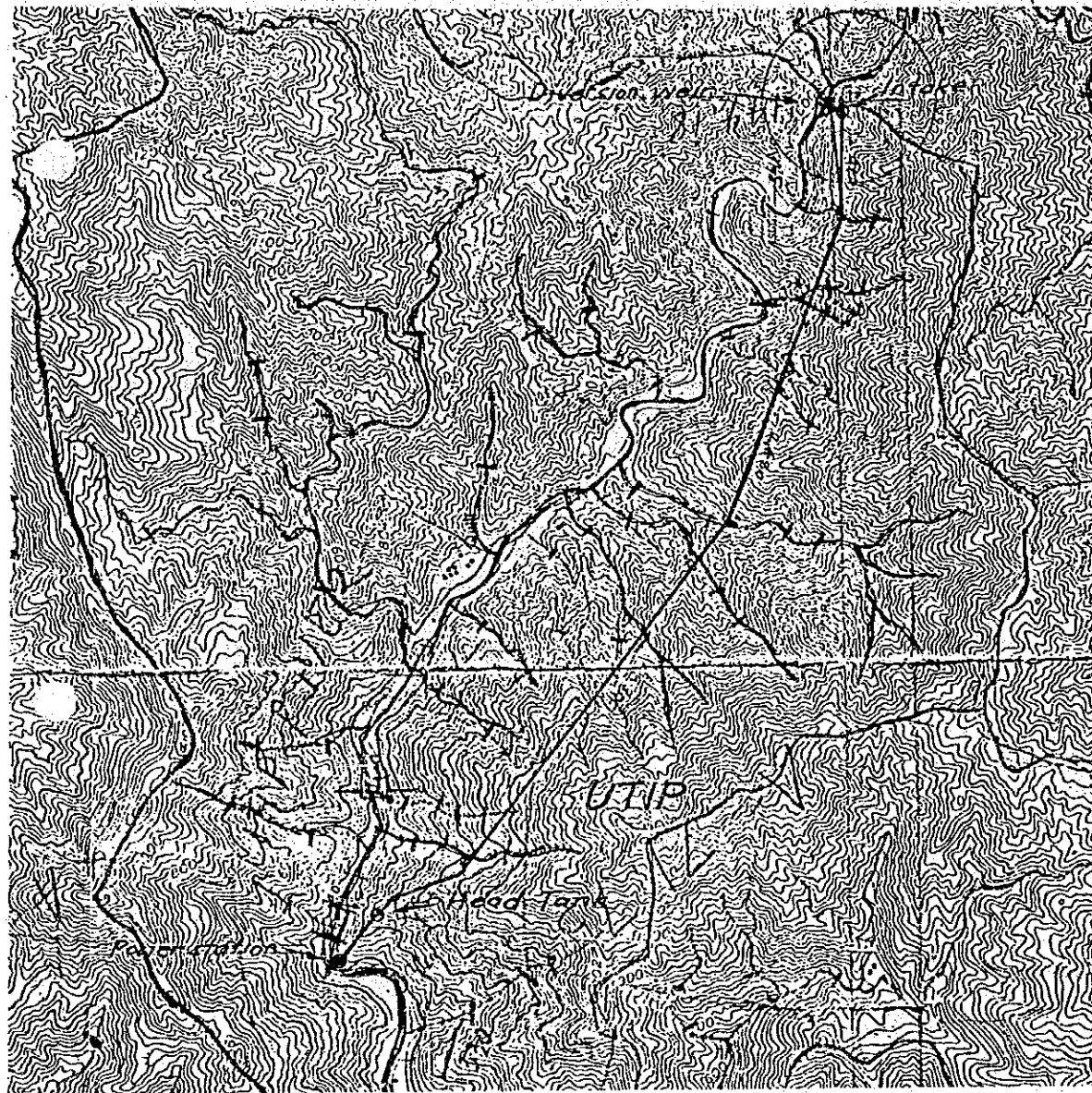
Catchment Area(km²) : 45.0
 Dam Height(m) : 5.7
 Plant Max. Discharge(m³/s) : 2.2
 Installed Capacity(MW) : 6.3
 Annual Energy Output(GWh) : 29.3

Scheme Name : IKMIN
 ID No. : 1-022-05-23-0-2
 Type of Development : RUN-OF-RIVER
 Ref. Map No. : 3170-III

Catchment Area(km²) : 192.8
 Dam Height(m) : 9.2
 Plant Max. Discharge(m³/s) : 9.4
 Installed Capacity(MW) : 10.2
 Annual Energy Output(GWh) : 47.6

NATIONAL POWER CORPORATION
STUDY ON HYDROPOWER POTENTIALS IN LUZON ISLAND
JAPAN INTERNATIONAL COOPERATION AGENCY

General Development Plan

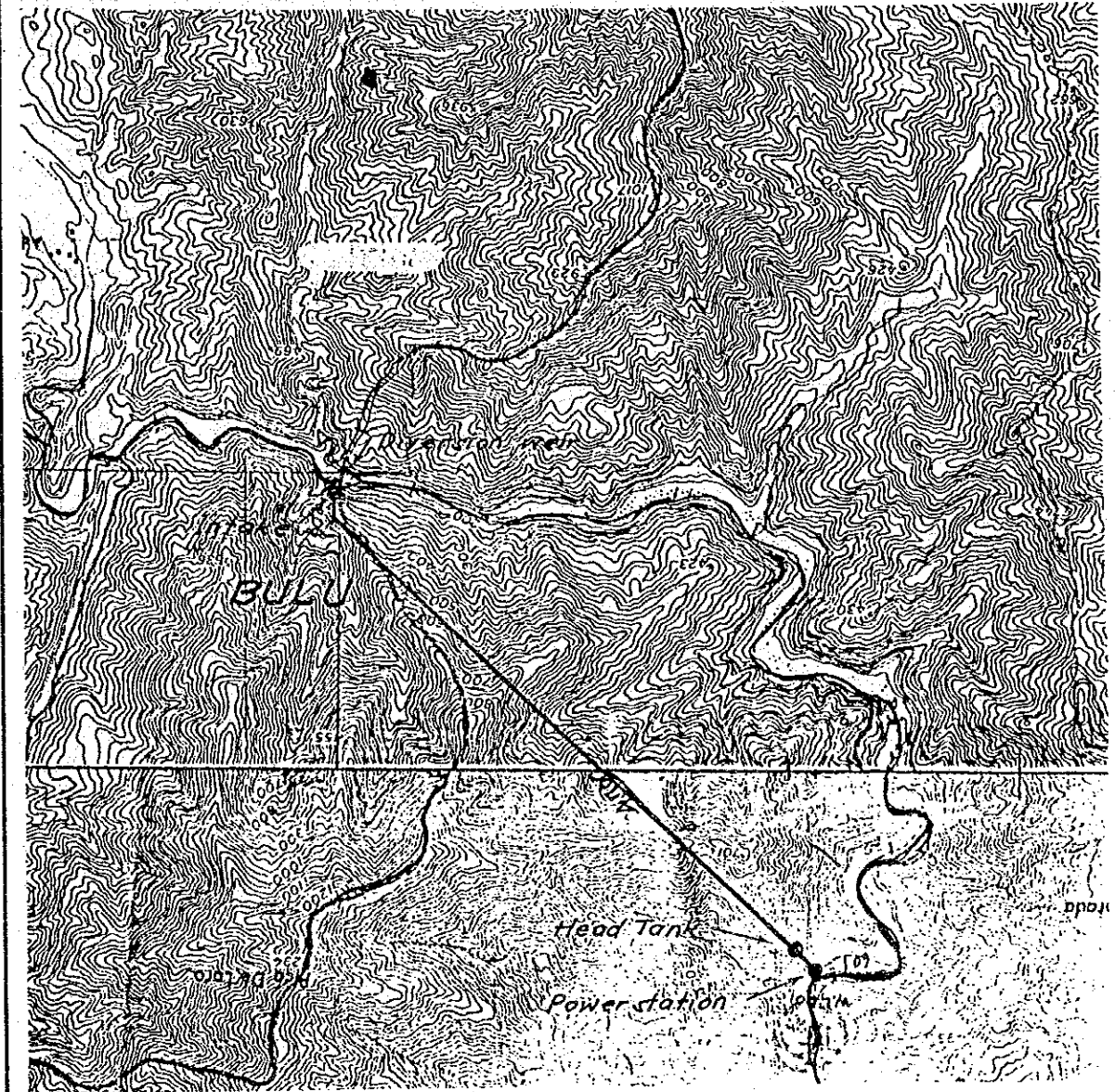


Scheme Name : UTIP
 ID No. : 1-022-06-29-0-2
 Type of Development : RUN-OF-RIVER
 Ref. Map No. : 3171-I

Catchment Area(km²) : 144.2
 Dam Height(m) : 7.5
 Plant Max. Discharge(m³/s) : 8.1
 Installed Capacity(MW) : 11.4
 Annual Energy Output(GWh) : 53.0

NATIONAL POWER CORPORATION
 STUDY ON HYDROPOWER POTENTIALS
 IN LUZON ISLAND
 JAPAN INTERNATIONAL COOPERATION AGENCY

General Development Plan

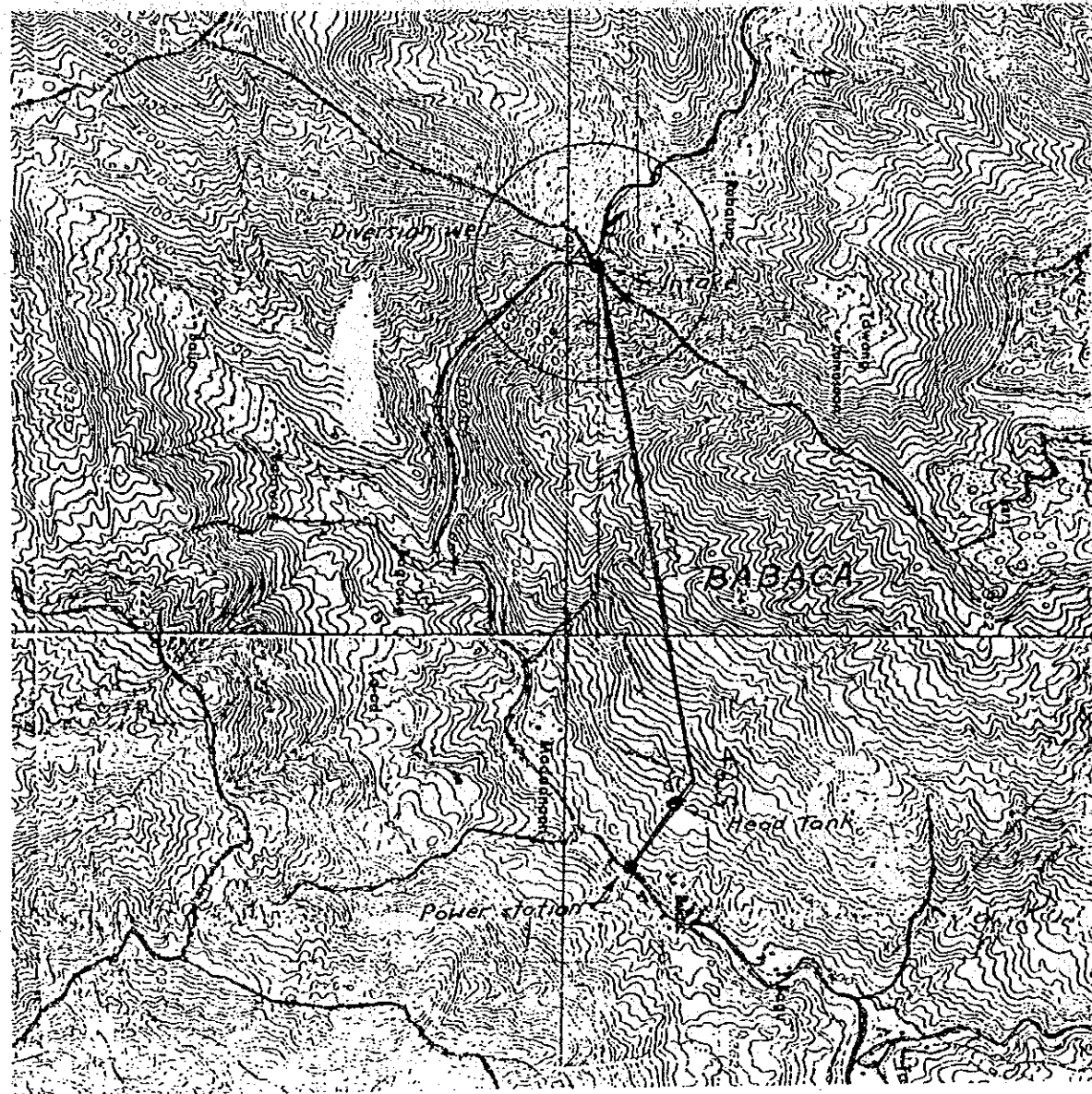


Scheme Name : BULU-2
 ID No. : 1-047-00-02-0-2
 Type of Development : RUN-OF-RIVER
 Ref. Map No. : 3175-II

Catchment Area(km²) : 129.7
 Dam Height(m) : 6.1
 Plant Max. Discharge(m³/s) : 7.8
 Installed Capacity(MW) : 7.5
 Annual Energy Output(GWh) : 35.7

NATIONAL POWER CORPORATION
 STUDY ON HYDROPOWER POTENTIALS
 IN LUZON ISLAND
 JAPAN INTERNATIONAL COOPERATION AGENCY

General Development Plan

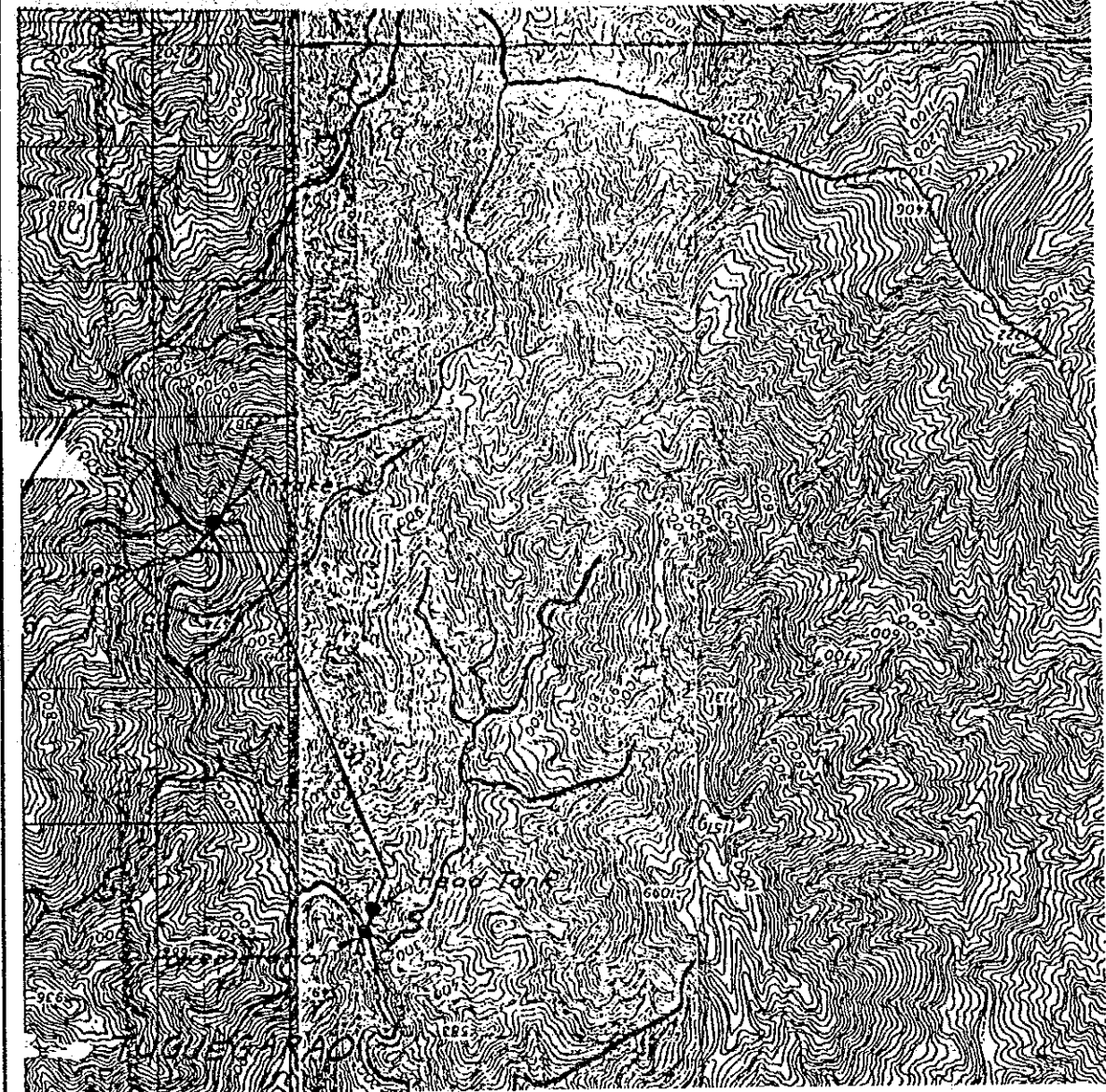


Scheme Name : BABACA
 ID No. : 2-008-05-18-0-2
 Type of Development : RUN-OF-RIVER
 Ref. Map No. : 3272-IV

Catchment Area(km²) : 134.9
 Dam Height(m) : 6.8
 Plant Max. Discharge(m³/s) : 4.6
 Installed Capacity(MW) : 6.3
 Annual Energy Output(GWh) : 32.9

NATIONAL POWER CORPORATION
STUDY ON HYDROPOWER POTENTIALS IN LUZON ISLAND
JAPAN INTERNATIONAL COOPERATION AGENCY

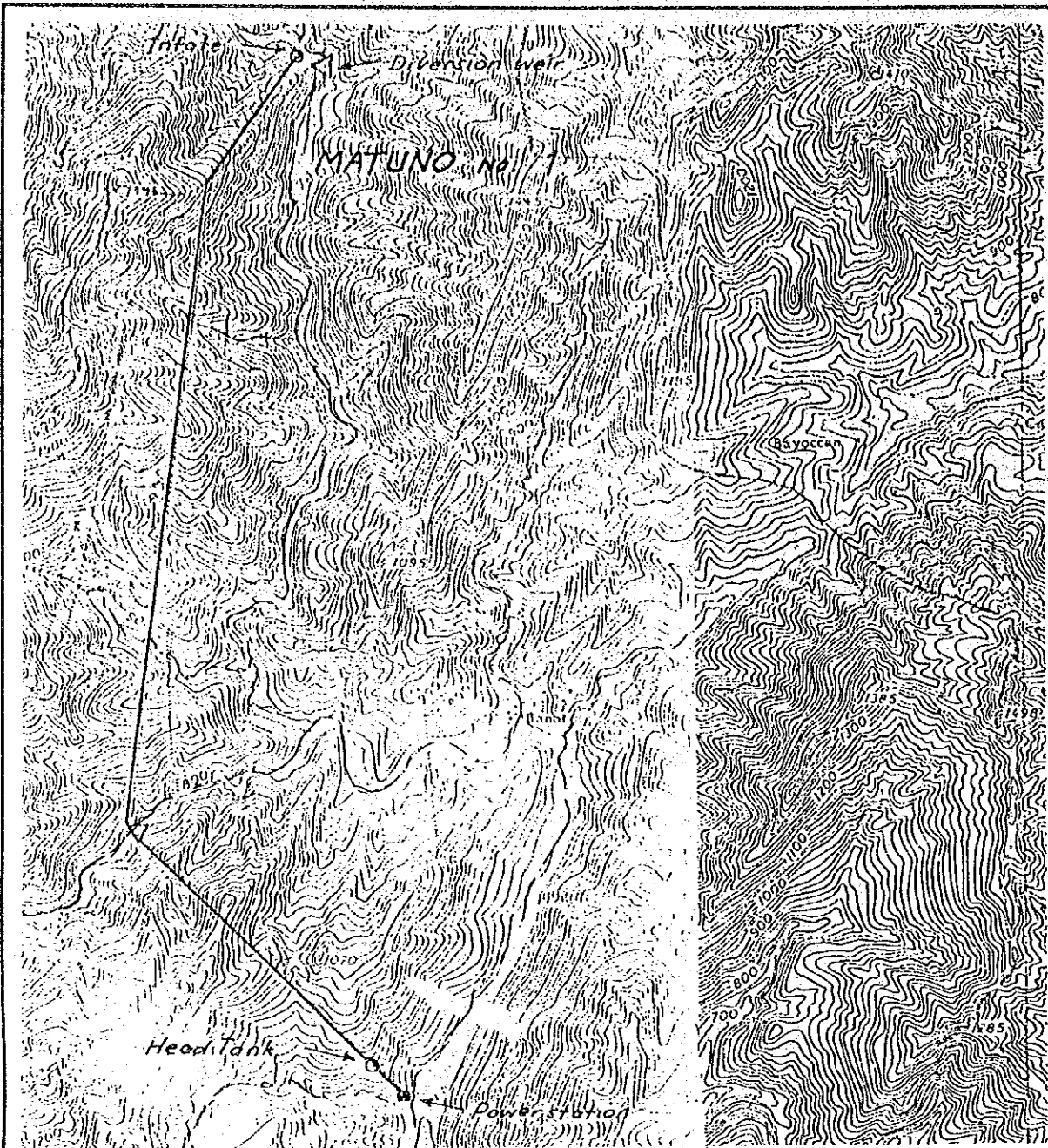
General Development Plan



Scheme Name : TUGUEGARAO
 ID No. : 2-008-08-27-0-2
 Type of Development : RUN-OF-RIVER
 Ref. Map No. : 3472-IV

Catchment Area(km²) : 95.3
 Dam Height(m) : 8.5
 Plant Max. Discharge(m³/s) : 11.4
 Installed Capacity(MW) : 9.2
 Annual Energy Output(GWh) : 46.6

NATIONAL POWER CORPORATION
STUDY ON HYDROPOWER POTENTIALS IN LUZON ISLAND
JAPAN INTERNATIONAL COOPERATION AGENCY

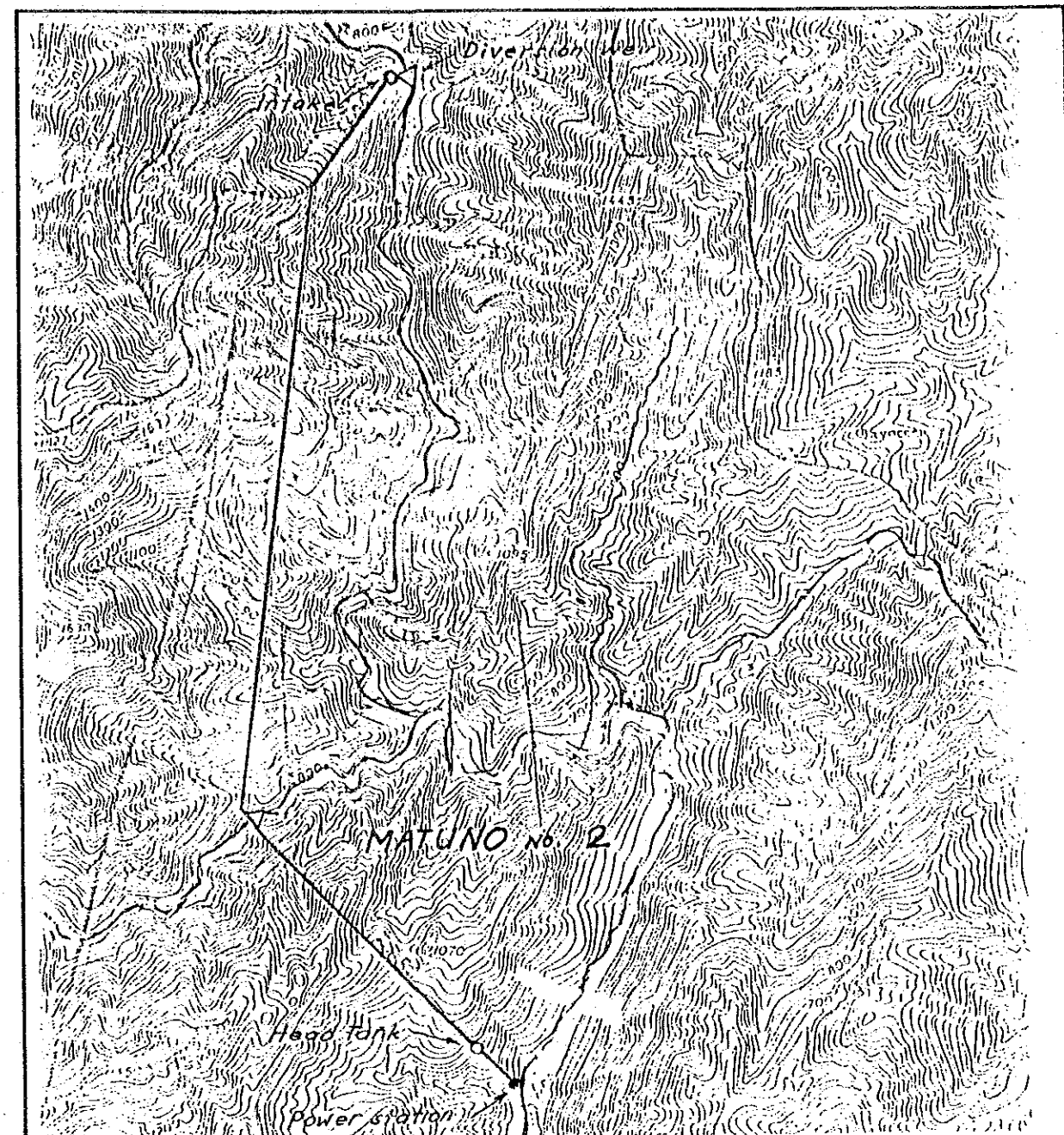


Scheme Name : MATUNO-1R
 ID No. : 2-008-22-47-0-2
 Type of Development : RUN-OF-RIVER
 Ref. Map No. : 3269-IV

 Catchment Area(km²) : 177.3
 Dam Height(m) : 6.9
 Plant Max. Discharge(m³/s) : 8.1
 Installed Capacity(MW) : 9.2
 Annual Energy Output(GWh) : 47.2

General Development Plan

NATIONAL POWER CORPORATION
 STUDY ON HYDROPOWER POTENTIALS
 IN LUZON ISLAND
 JAPAN INTERNATIONAL COOPERATION AGENCY



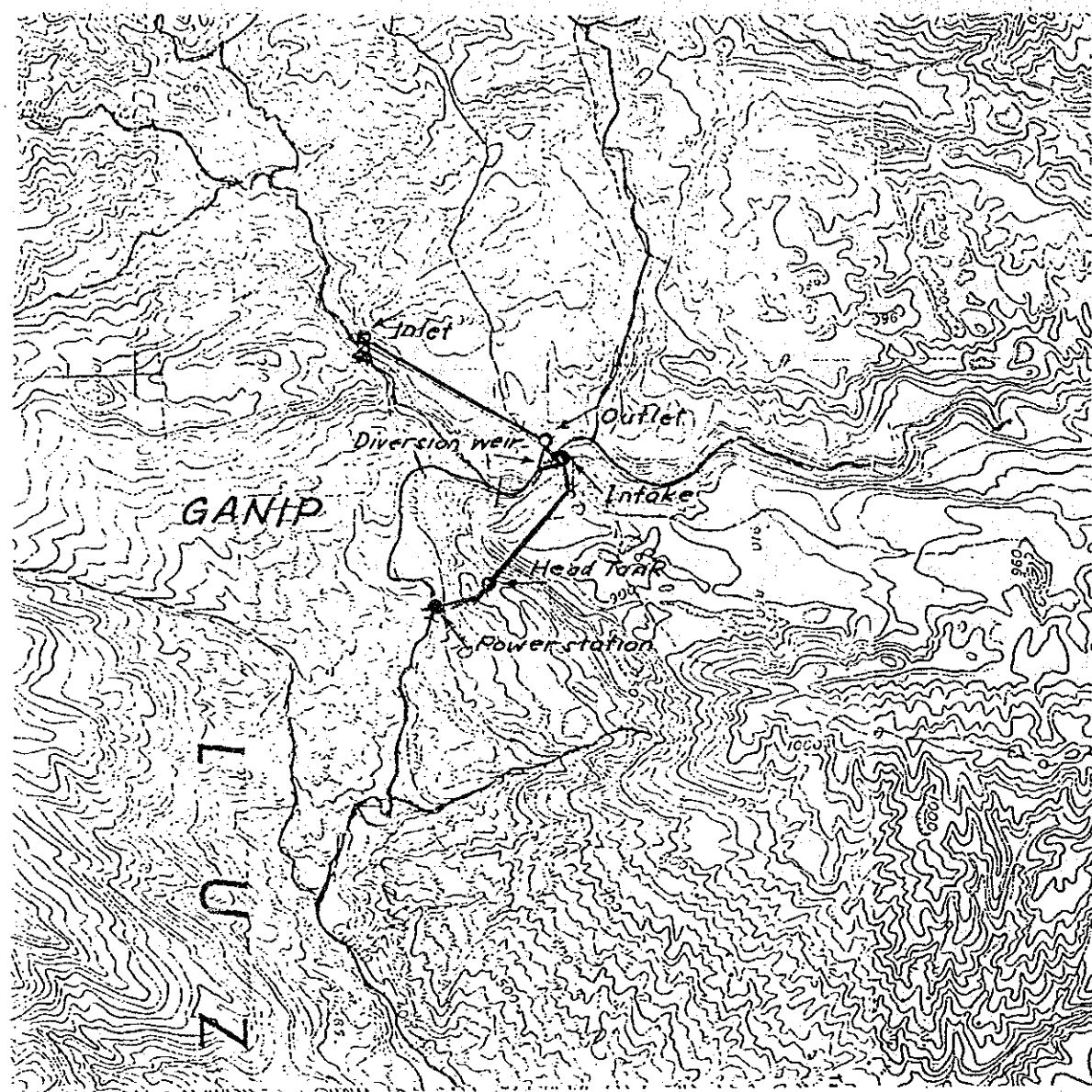
Scheme Name : MATUNO-2R
 ID No. : 2-008-22-48-0-2
 Type of Development : RUN-OF-RIVER
 Ref. Map No. : 3169-I

 Catchment Area(km²) : 85.2
 Dam Height(m) : 6.3
 Plant Max. Discharge(m³/s) : 4.0
 Installed Capacity(MW) : 8.7
 Annual Energy Output(GWh) : 44.6

General Development Plan

NATIONAL POWER CORPORATION
 STUDY ON HYDROPOWER POTENTIALS
 IN LUZON ISLAND
 JAPAN INTERNATIONAL COOPERATION AGENCY

General Development Plan

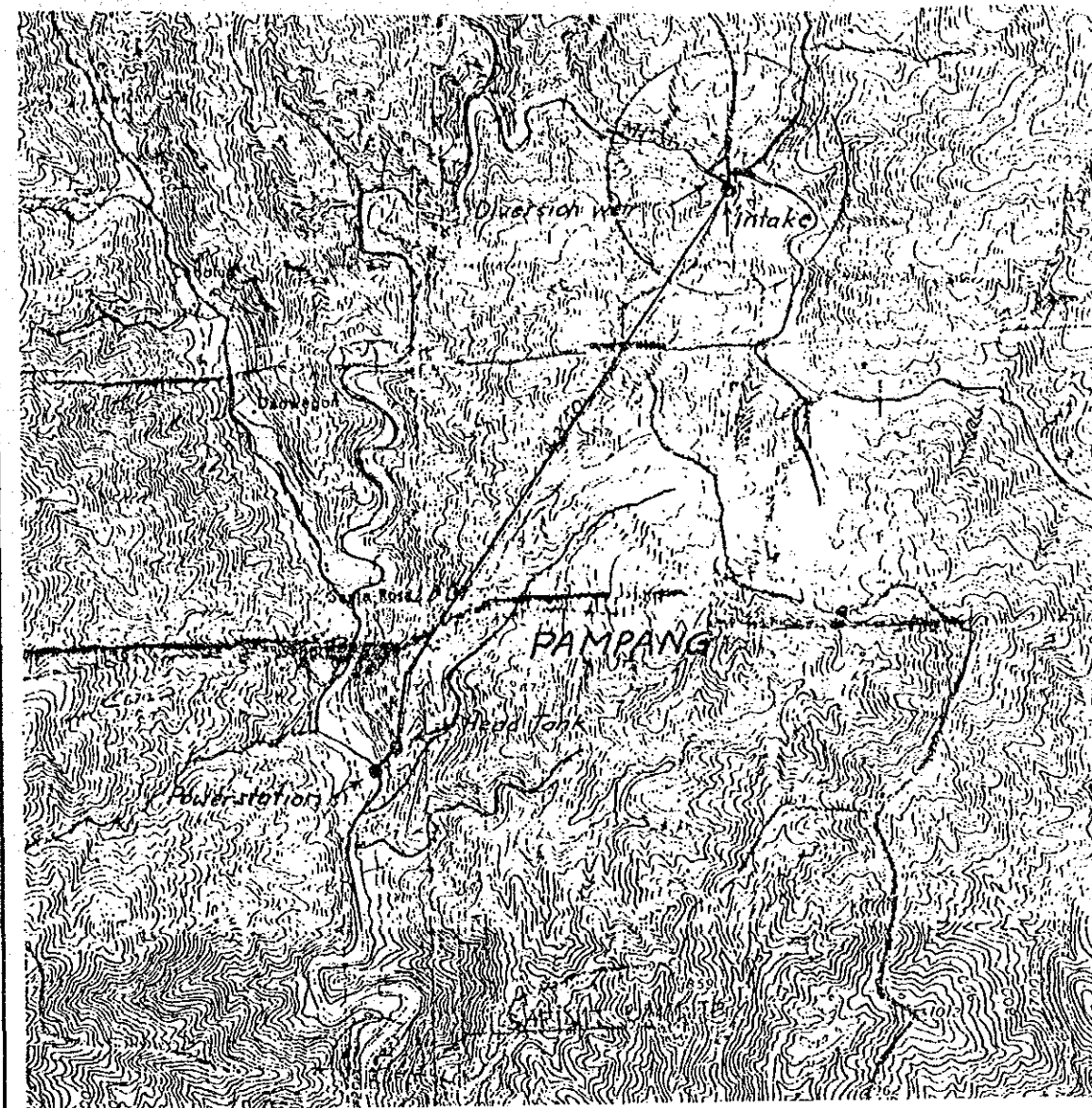


Scheme Name : GANIP
 ID No. : 2-008-28-53-0-2
 Type of Development : RUN-OF-RIVER
 Ref. Map No. : 3268-11

Catchment Area(km²) : 114.7
 Dam Height(m) : 6.4
 Plant Max. Discharge(m³/s) : 6.1
 Installed Capacity(MW) : 7.9
 Annual Energy Output(GWh) : 41.5

NATIONAL POWER CORPORATION
 STUDY ON HYDROPOWER POTENTIALS
 IN LUZON ISLAND
 JAPAN INTERNATIONAL COOPERATION AGENCY

General Development Plan



Scheme Name : PAMPANG
 ID No. : 3-077-04-10-0-2
 Type of Development : RUN-OF-RIVER
 Ref. Map No. : 3168-1

Catchment Area(km²) : 192.7
 Dam Height(m) : 6.5
 Plant Max. Discharge(m³/s) : 5.3
 Installed Capacity(MW) : 6.3
 Annual Energy Output(GWh) : 35.6

NATIONAL POWER CORPORATION
 STUDY ON HYDROPOWER POTENTIALS
 IN LUZON ISLAND
 JAPAN INTERNATIONAL COOPERATION AGENCY

JICA