

REPORT
ON
TOPOGRAPHIC MAPPING PROJECT
FOR
SATIPO AREA, DEPARTMENT OF JUNIN
THE REPUBLIC OF PERU
(Second Year Work (Aerial Photography))
(Third Year Work)

Aerial Photography
Pricking
Field Identification
Aerial Triangulation
Stereo Plotting

MARCH, 1985

JAPAN INTERNATIONAL COOPERATION AGENCY
(JICA)

S	D	F
J	R	
85-041		

RY

REPORT
ON
TOPOGRAPHIC MAPPING PROJECT
FOR
SATIPO AREA, DEPARTMENT OF JUNIN
THE REPUBLIC OF PERU
(Second Year Work (Aerial Photography))
(Third Year Work)

Aerial Photography
Pricking
Field Identification
Aerial Triangulation
Stereo Plotting

JAPAN INTERNATIONAL COOPERATION AGENCY
(JICA)

 LIBRARY

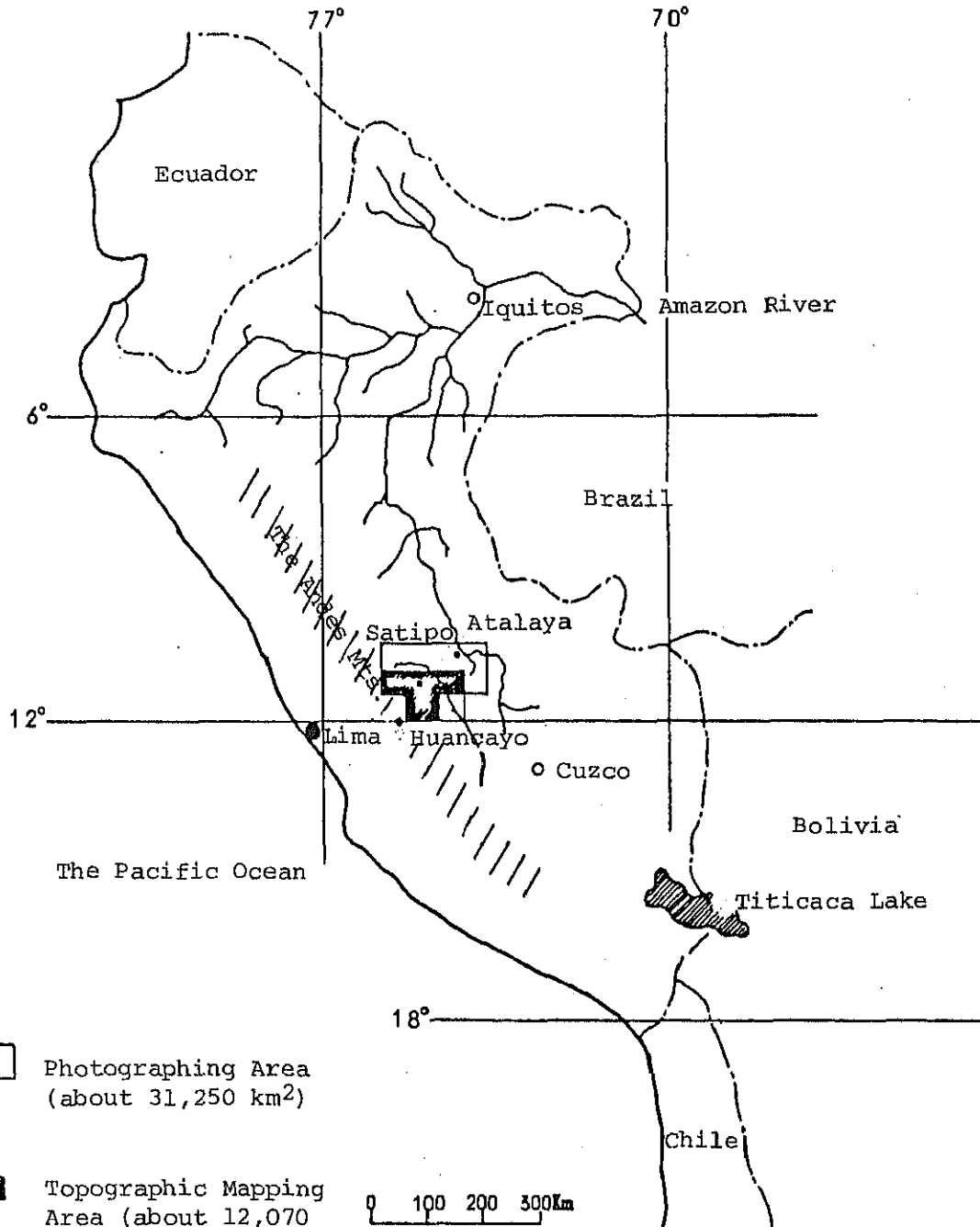
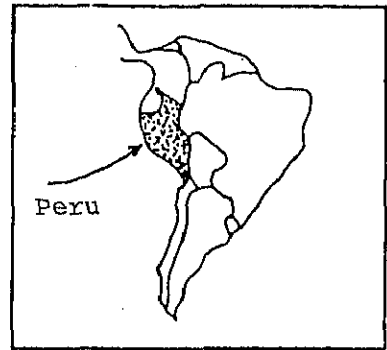


1034951[2]

国際協力事業団	
受入 月日 '85. 8. 15	709
登録No. 11837	554 54.8
	SDF

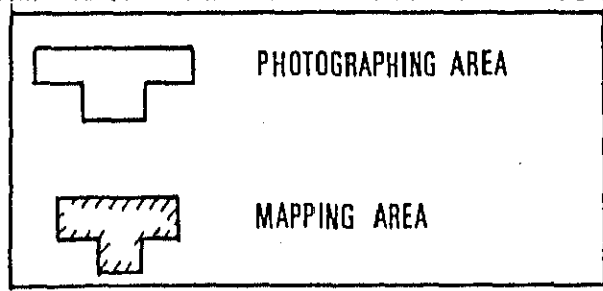
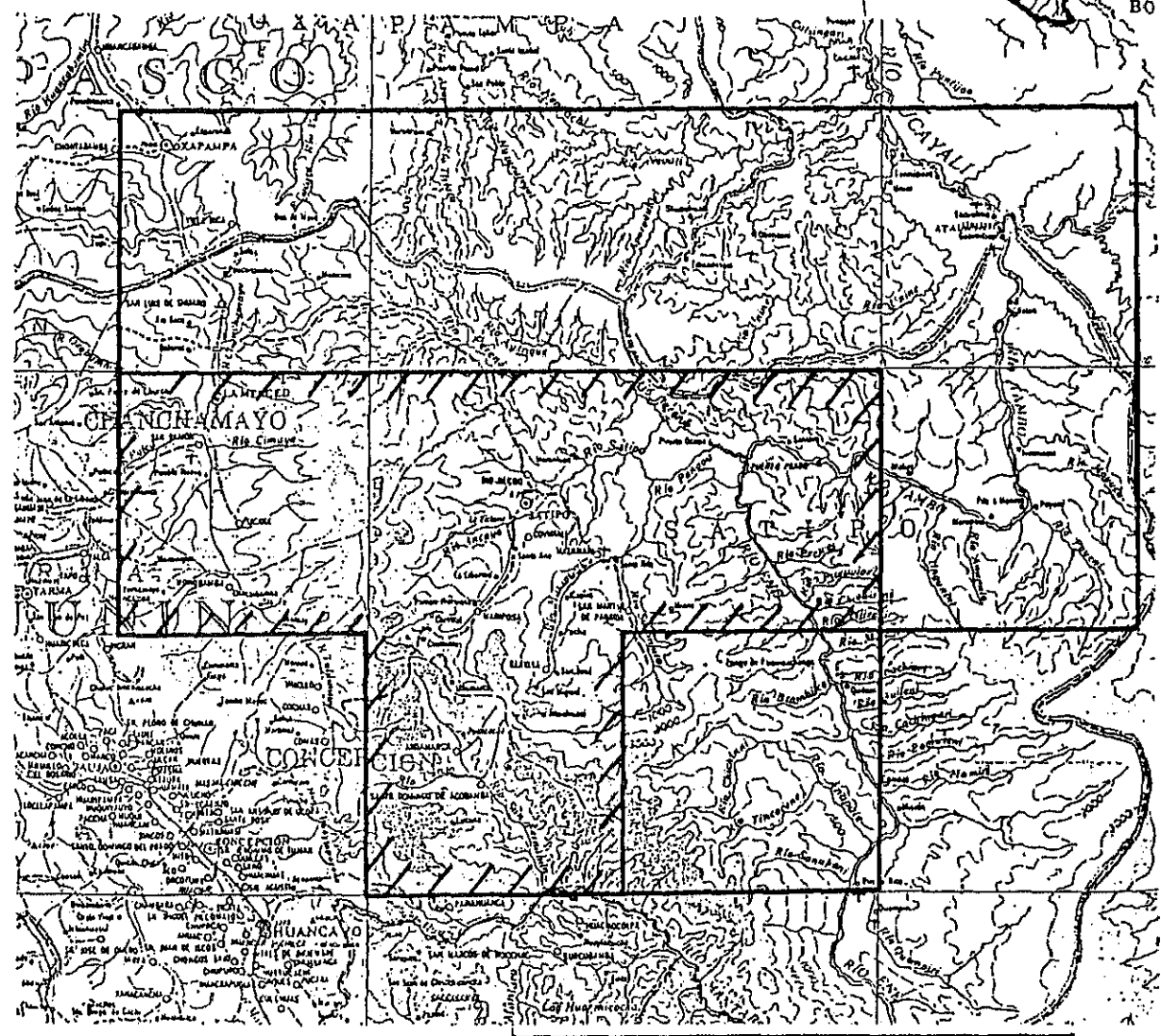
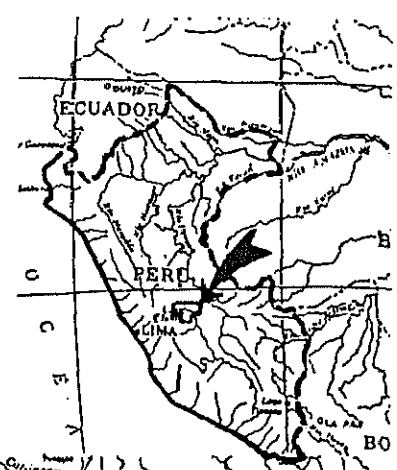
マイクロ
フィルム作成

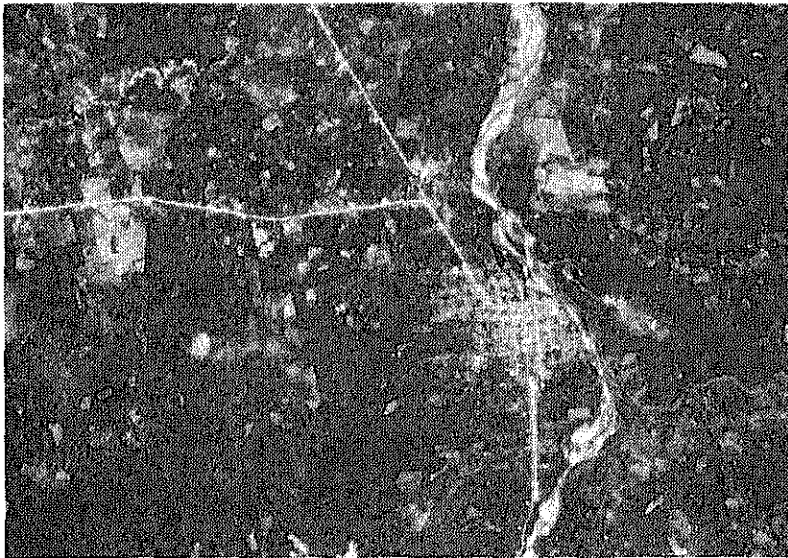
TOPOGRAPHIC MAPPING PROJECT
 OF
 SATIPO AREA, DEPARTMENT OF JUNIN,
 THE REPUBLIC OF PERU
 PROJECT LOCATION MAP



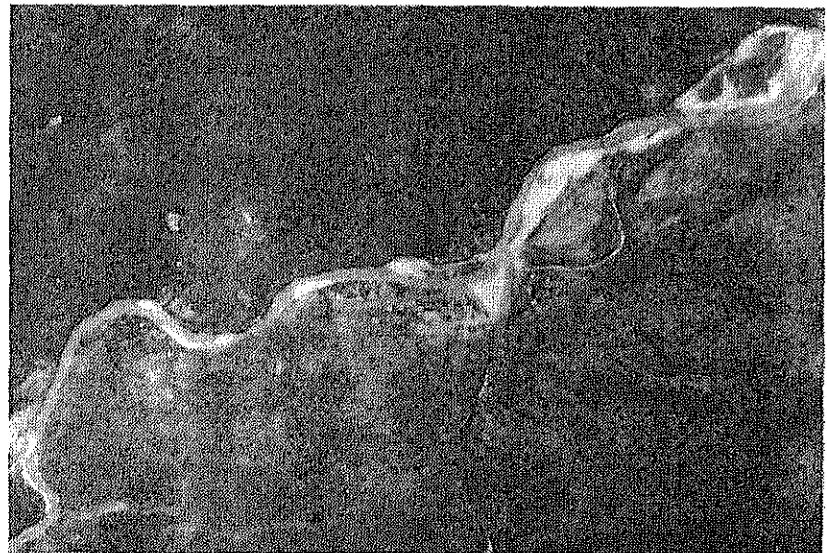
TOPOGRAPHIC MAPPING PROJECT OF SATIPO AREA

LOCATION MAP





Principal city of
this province,
Aerial photograph
of around Satipo area



A village in
jungle area,
Aerial photograph
of Puerto Ocopa

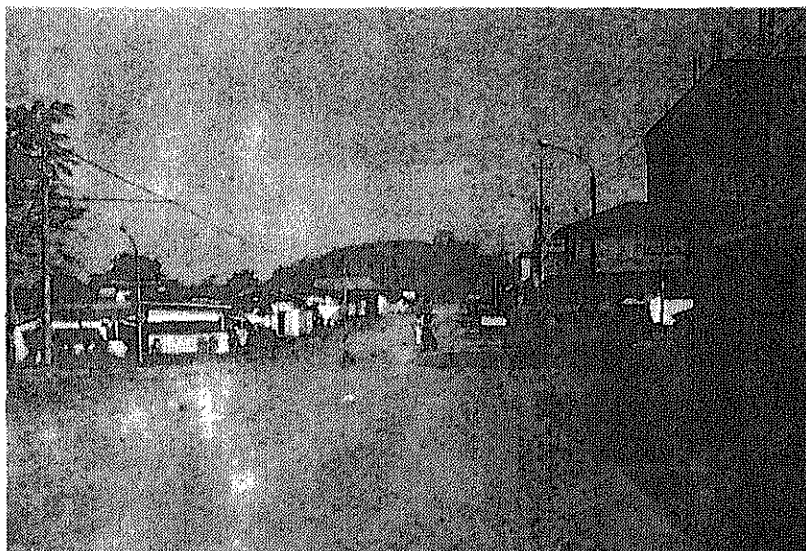


Aerial photograph of
mountainous area,
making the branch of
the Andes

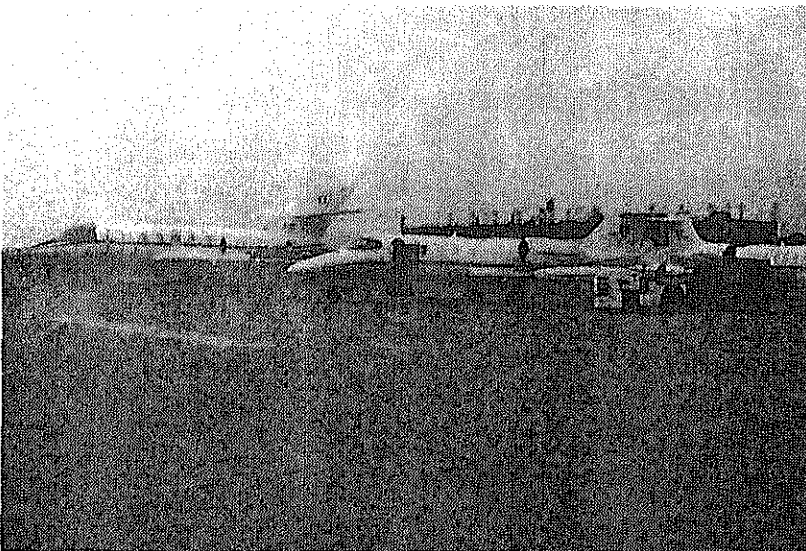
General view of
Satipo area



A street of
Sanmartin de
Pangoa



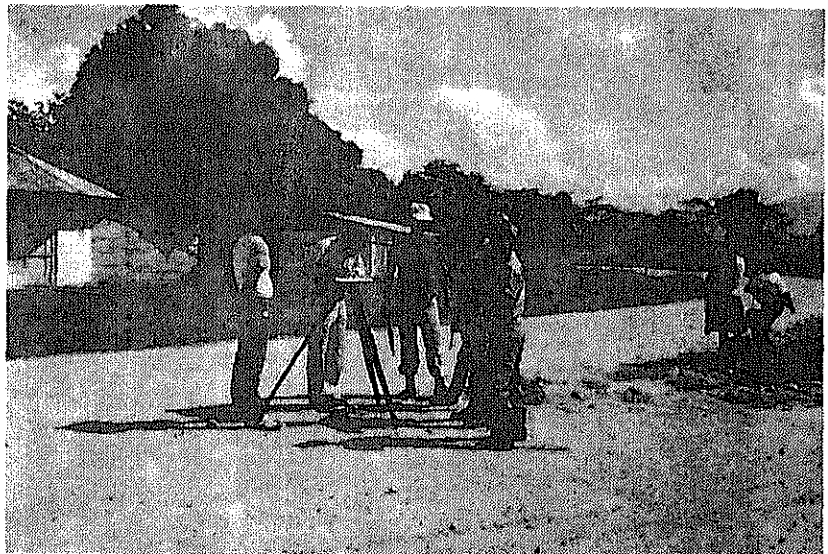
Aircraft for
aerial photography



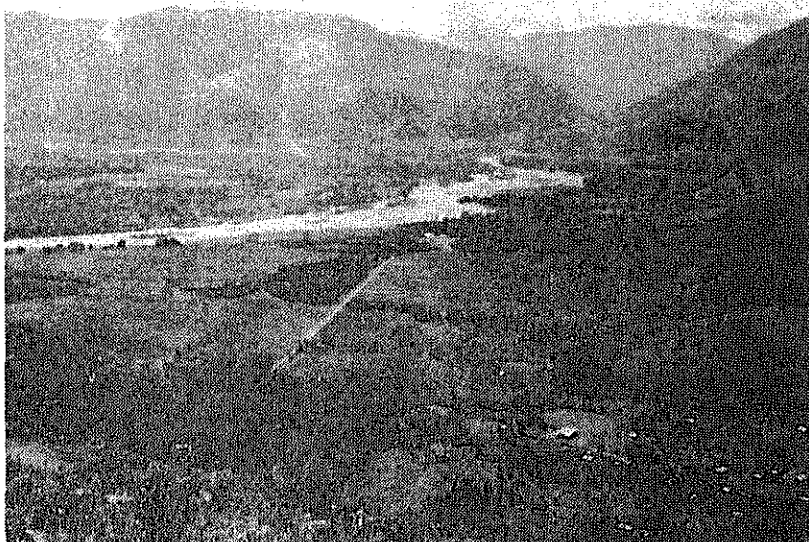
Existing bench mark



Pricking



Orchard near Satipo
area



Brunt crop land
for an agricultural
purpose



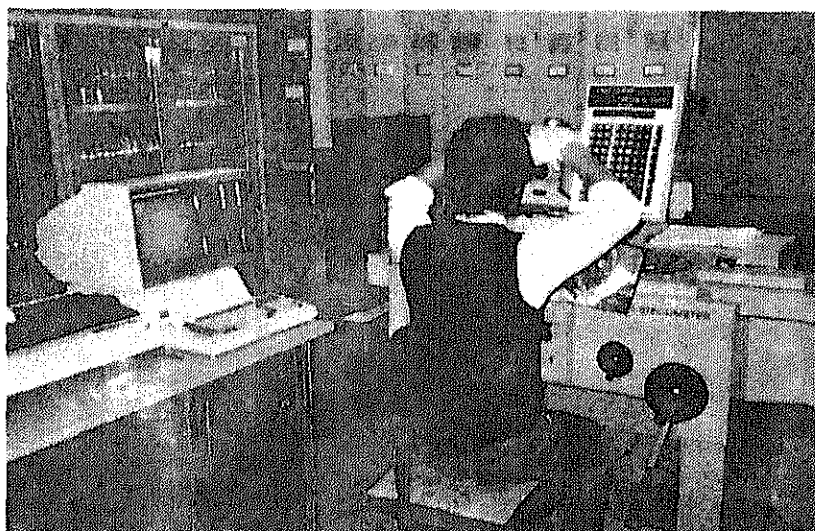
Field identifi-
cation



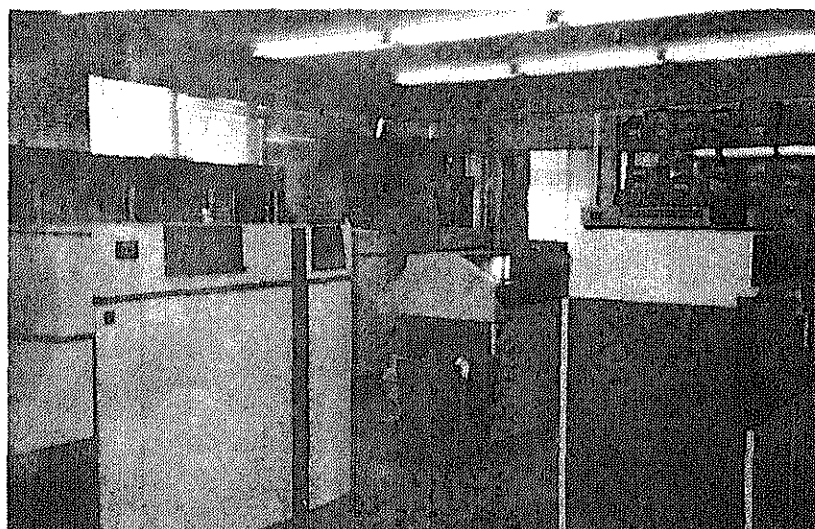
Signing of the
Minutes



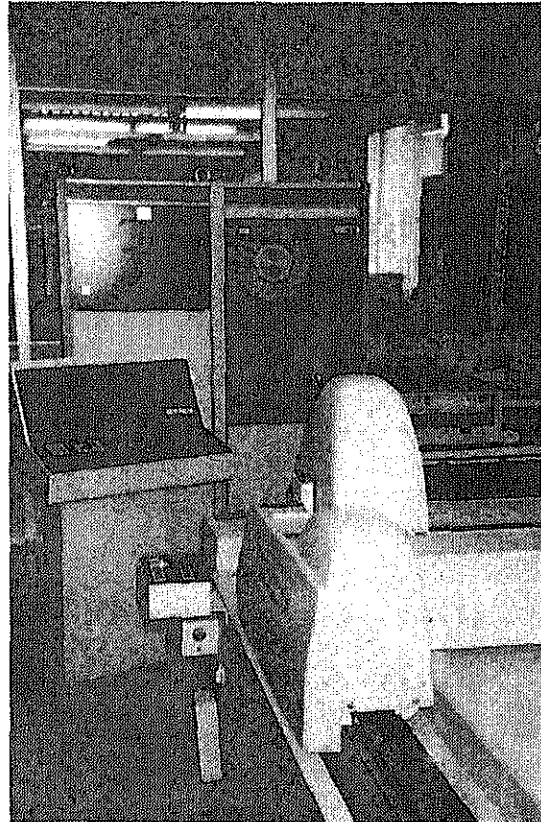
Aerial triangulation,
Observation



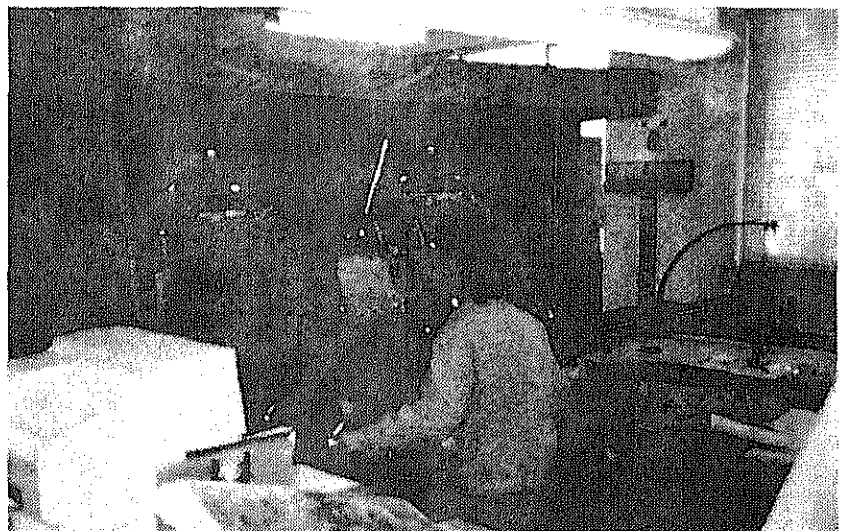
Aerial triangulation,
Computation



High-speed automatic
plotter



Stereo plotting,
Stereo plotter
A-8



CONTENTS

	(page)
1. Background	1
2. 3rd-year work	2
2-1 Outline of work	2
2-2 Project area	2
2-3 Work period	3
2-4 Survey team members	3
2-5 Work volume	4
2-6 Main equipment	5
2-7 Schedule	7
2-8 Work supervision and inspection	11
3. Field work	12
3-1 Aerial photography of the second-year work	12
3-1-1 Outline of work	12
a) Aerial photography plan	12
b) Contract of aerial photography	13
c) Aerial photography base	13
d) Organization of staff	13
e) Meteorological observation staff	14
f) Weather conditions	14

	(page)
3-1-2 Aerial photography	14
a) Photographing	14
b) Daily photographing report	16
c) Meteorological observation records	22
3-1-3 Outline of photo processing and inspection .	24
a) Photo processing	24
b) Inspection	24
c) Film annotation and preparation of photo index map	25
3-1-4 Result of aerial photography	25
3-2 Third-year work	27
Pricking and field identification	
3-2-1 Outline of work	27
a) Preparation	27
b) Establishment of the Satipo office	27
c) Communications	27
d) Issuance of ID card	27
3-2-2 Pricking	28
a) NNSS stations and traverse stations	28
b) Bench marks	28
3-2-3 Field identification ,.....	29
a) Field identification standard	29
b) Aerial photographs	29
c) Preliminary photo-interpretation	29
d) Field confirmation	30
e) Collection of necessary data	30

	(page)
4. Domestic work	30
4-1 Aerial triangulation	30
a) Outline	30
b) Main instruments	31
c) Point selection and transfer	31
d) Measurement of photo-coordinates	32
e) Computation of block-adjustment and accuracy	33
4-2 Plotting	34
a) Outline and specifications	34
b) Plotting of control points stations, etc.	36
c) Orientation	36
d) Detail plotting	36
5. Suggestions on forth-year work	41
6. Impressions	42

1. Background

Satipo area, Department of Junin, Peru abounds in mineral and forest resources. There are projects, therefore, of developing livestock farming in its high mountainous area, and of constructing an electric power plant utilizing abundant water of the Ene River and roads to run from Satipo through Mazamari up to Atalaya.

As for the topographic map of this very district indispensable for these projects, however, there is only one series of maps in a scale of 1 to 450,000 the contents of which are insufficient as a map for these development plans. Therefore, with a view to making a basic topographic map for this area, the project was established upon request from the Peruvian government to prepare a topographic map in a scale of 1 to 25,000 based on the aerial photographs with a scale of 1 to 60,000. As regards this topographic mapping project for Satipo area, following the conference made by the contact mission in January, 1982, the preliminary survey was conducted from February to April, 1982 and S/W was signed between the Japanese and Peruvian governments.

In accordance with the agreement of the S/W, aerial photography for 31,250 km² of Satipo area and 1 to 25,000 topographic mapping for 12,070 km² have been commenced since 1982. This stage of the fiscal 1985 corresponds to the third-year work.