

FA	EBC09R12		EBC09R03		EBC09R06		EBC09R07A		EBC09R11		EBC10AR03	
	IRCL		IRCL		IRCL		IRCL		IRCL		IRCL	
71	441.		0.		0.		0.		0.		0.	
72	665.	50.8	0.	---	0.	---	363.	---	0.	---	-4.	-50.0
73	750.	12.8	0.	---	0.	---	203.	-44.1	0.	---	-1.	-75.0
74	856.	14.1	0.	---	0.	---	644.	316.7	0.	---	-5.	409.0
75	823.	-3.9	-727.	---	-727.	---	820.	-3.1	0.	---	0.	20.0
76	1007.	22.6	-85.	-69.3	-392.	-57.1	207.	-65.0	0.	---	0.	-109.0
77	1140.	13.0	-1159.	1252.9	-1011.	225.0	1910.	251.9	0.	---	-147.	---
78	1369.	19.3	-2227.	93.7	-2187.	115.7	1106.	9.5	0.	---	-657.	47.0
FA	EBC10AR04		EBC10AR07A		EBC10AR11		EBC10AR12		EBC10AR14		EBC10R03	
	IRCL		IRCL		IRCL		IRCL		IRCL		IRCL	
71	-0.		12.		3.		1.		2.		-6286.	
72	-4.	-50.0	10.	-14.7	6.	100.0	2.	100.0	4.	100.0	-3976.	43.1
73	-1.	-75.0	15.	-59.0	10.	133.3	4.	133.3	0.	133.3	-12249.	36.1
74	-5.	409.0	32.	113.3	32.	128.6	13.	128.6	19.	128.6	-9466.	-22.0
75	-6.	20.0	59.	56.3	49.	59.0	19.	59.0	29.	50.0	-7392.	-21.9
76	-1.	-93.3	46.	-10.0	59.	22.9	24.	22.9	35.	22.9	-7784.	8.2
77	-465.	---	53.	29.3	64.	8.5	26.	8.5	38.	8.5	-9597.	19.1
78	-452.	40.2	59.	9.8	89.	25.0	32.	25.0	48.	25.0	-9210.	-13.6
FA	EBC10R04		EBC10R07A		EBC10R11		EBC10R14		EBC10R02		EBC10R03	
	IRCL		IRCL		IRCL		IRCL		IRCL		IRCL	
71	-6286.		6282.		154.		154.		0.		-6274.	
72	-8954.	-42.4	9218.	46.7	231.	50.0	231.	50.0	42.	---	-3889.	43.9
73	-12214.	36.8	12314.	34.1	234.	1.3	234.	1.3	26.	-38.1	-12241.	36.0
74	-9375.	-23.2	10233.	-17.2	240.	23.9	240.	23.9	70.	149.2	-9451.	-22.0
75	-7313.	-22.0	7589.	-25.0	244.	-15.9	244.	-15.9	87.	-1.4	-7389.	-21.0
76	-8077.	10.4	8226.	8.4	196.	-19.7	196.	-19.7	53.	-23.2	-7984.	8.1
77	-9195.	13.0	9731.	18.3	210.	22.4	210.	22.4	52.	-1.9	-9556.	24.7
78	-8147.	-11.4	9320.	-4.3	436.	81.7	436.	81.7	81.	55.8	-8975.	-10.9
FA	EBC10R05		EBC10R04		EBC10R07A		EBC10R07B		EBC10R10A		EBC10R10B	
	IRCL		IRCL		IRCL		IRCL		IRCL		IRCL	
71	0.		-6274.		6274.		0.		0.		0.	
72	0.	---	-8958.	42.3	9228.	46.6	0.	---	0.	---	0.	---
73	0.	---	-12215.	36.8	12379.	34.1	0.	---	0.	---	0.	---
74	0.	---	-9380.	-23.2	10265.	-17.1	0.	---	0.	---	0.	---
75	0.	---	-7319.	-22.0	7637.	-25.4	0.	---	0.	---	0.	---
76	-145.	---	-8978.	10.4	8267.	8.2	19.	---	0.	---	0.	---
77	272.	-206.3	-9449.	19.6	9787.	10.4	176.	2485.3	0.	---	0.	---
78	-7.	-102.6	-8757.	-8.9	9370.	-8.2	474.	41.6	-1.	---	0.	---
FA	EBC10R11		EBC10R12		EBC10R14		EBC10R16		EBC10R09		EBC10R08	
	IRCL		IRCL		IRCL		IRCL		IRCL		IRCL	
71	157.		1.		2.		154.		4592.		4592.	
72	237.	51.0	2.	100.0	6.	100.0	231.	50.0	5714.	24.4	5714.	24.4
73	240.	1.6	4.	133.3	8.	133.3	234.	1.3	7655.	23.5	7655.	23.5
74	322.	29.0	13.	120.6	19.	120.6	240.	23.9	-7274.	3.1	7276.	3.1
75	292.	-9.3	19.	50.0	29.	50.0	244.	-15.9	8017.	10.2	8037.	10.2
76	255.	-12.7	21.	22.9	35.	22.9	196.	-19.7	11534.	43.9	11534.	43.9
77	301.	19.2	26.	8.5	38.	8.5	210.	22.4	19413.	70.0	19413.	70.0
78	516.	49.7	32.	25.0	49.	25.0	436.	81.7	39327.	54.6	39327.	54.6
FA	EBC10R10		EBC10R10A		EBC10R10B		EBC10R12		EBC10R14		EBC10R16	
	IRCL		IRCL		IRCL		IRCL		IRCL		IRCL	
71	-31.		-1369.		159.		79.		0.		79.	
72	-50.	61.3	-1280.	-11.2	334.	119.1	187.	111.4	0.	---	187.	111.4
73	-48.	-8.0	-1555.	28.7	334.	0.0	187.	0.0	0.	---	187.	0.0
74	-18.	0.0	-2107.	35.5	358.	7.2	199.	13.8	1.	---	187.	0.0
75	-47.	2.2	-2390.	13.0	541.	52.0	241.	54.7	1.	0.0	249.	48.5
76	-42.	-10.4	-2942.	19.3	593.	9.0	321.	9.2	2.	100.0	270.	8.9
77	-43.	2.1	-4295.	50.1	8112.	138.1	731.	129.7	2.	0.0	477.	159.7
78	-45.	1.7	-8580.	97.9	2225.	57.6	1939.	55.2	2.	0.0	1684.	60.1

(2) 外生変数

FA	CG1	EGC01R02	EGC01R03	EGC01R05	EGC01R08
	IRCL	IRCL	IRCL	IRCL	IRCL
71	331.00000	0.00000	0.00000	-10.00000	0.00000
72	414.00000 21.4	12.00000 ---	0.00000 ---	17.00000 -135.4	-12.00000 ---
73	766.00000 22.9	3.00000 -75.0	0.00000 ---	32.00000 80.2	-3.00000 -75.0
74	811.00000 17.5	1.00000 -46.7	0.00000 ---	-7.00000 -121.7	-1.00000 -46.7
75	1253.70000 17.1	6.00000 502.0	0.00000 ---	-3.00000 -57.1	-6.00000 500.0
76	1519.50000 26.9	1.00000 -83.3	-0.00000 ---	-4.00000 31.3	-1.00000 -83.3
77	2319.40000 27.0	0.00000 -199.0	-7.00000 -12.5	-14.00000 259.0	0.00000 -199.0
78	2331.50000 15.5	0.00000 ---	-30.00000 328.6	-42.00000 269.0	0.00000 ---
FA	EGC01R102	EGC01R103	EGC01R112	EGC01R113	EGC01R114
	IRCL	IRCL	IRCL	IRCL	IRCL
71	-23.00000	0.00000	59.00000	15.00000	0.00000
72	-126.00000 117.8	0.00000 ---	51.00000 2.0	28.00000 -37.8	0.00000 ---
73	-13.00000 -87.7	0.00000 ---	11.00000 -15.7	37.00000 32.1	0.00000 ---
74	-19.00000 -23.1	0.00000 ---	13.00000 0.0	32.00000 -13.5	0.00000 ---
75	-7.00000 -19.0	0.00000 ---	15.00000 4.7	47.00000 16.9	0.00000 ---
76	-1.00000 -57.1	0.00000 ---	14.00000 -24.4	40.00000 -14.7	0.00000 ---
77	-5.00000 46.7	0.00000 ---	51.00000 50.0	49.00000 0.0	0.00000 ---
78	-0.00000 40.0	0.00000 ---	50.00000 -2.0	20.00000 -39.0	0.00000 ---
FA	EGC02R16	EGC02R01	EGC02R02	EGC02R05	EGC02R07A
	IRCL	IRCL	IRCL	IRCL	IRCL
71	0.00000	45210.00000	570.00000	61.00000	-10710.00000
72	2.00000 ---	77270.00000 21.5	147.00000 -71.6	100.00000 44.9	-20305.00000 9.0
73	3.00000 50.0	97103.00000 23.5	220.00000 35.8	201.00000 100.0	-24201.00000 18.7
74	7.00000 133.3	109548.00000 2.7	115.00000 -11.4	-1550.00000 -859.0	-24307.00000 -0.5
75	7.00000 0.0	15542.00000 -5.0	122.00000 -37.4	-355.00000 -27.0	-21713.00000 -7.1
76	12.00000 71.4	110204.00000 15.4	1607.00000 1210.9	-270.00000 -10.5	-22020.00000 1.4
77	20.00000 46.7	123270.00000 11.8	5566.00000 270.0	2015.00000 -771.8	-30207.00000 30.0
78	27.00000 35.0	119570.00000 -3.0	6224.00000 4.3	-552.00000 -127.4	-32025.00000 5.4
FA	EGC02R10A	EGC02R10B	EGC02R03	EGC02R11	EGC02R05
	IRCL	IRCL	IRCL	IRCL	IRCL
71	0.00000	0.00000	-59.00000	0.00000	0.00000
72	0.00000 ---	0.00000 ---	0.00000 -190.0	0.00000 ---	0.00000 ---
73	0.00000 ---	0.00000 ---	0.00000 ---	0.00000 ---	0.00000 ---
74	-505.00000	0.00000 ---	-527.00000	-2.00000	0.00000 ---
75	-505.00000 0.0	0.00000 ---	-727.00000 19.3	-3.00000 59.0	0.00000 ---
76	-414.00000 27.5	0.00000 ---	0.00000 -105.0	-2.00000 -33.3	59.00000 ---
77	-120.00000 -14.2	0.00000 ---	0.00000 ---	-2.00000 0.0	-17.00000 -190.0
78	-252.00000 -10.6	0.00000 ---	0.00000 ---	-1.00000 -50.0	-122.00000 147.0
FA	EGC04R10A	EGC04R10B	EGC04R12	EGC04R15	EGC05R14
	IRCL	IRCL	IRCL	IRCL	IRCL
71	0.00000	0.00000	0.00000	0.00000	0.00000
72	0.00000 ---	0.00000 ---	0.00000 ---	0.00000 ---	0.00000 ---
73	0.00000 ---	0.00000 ---	0.00000 ---	300.00000 ---	0.00000 ---
74	0.00000 ---	0.00000 ---	0.00000 ---	205.00000 -5.0	-114.00000 ---
75	0.00000 ---	0.00000 ---	0.00000 ---	314.00000 10.2	-135.00000 10.4
76	0.00000 ---	0.00000 ---	0.00000 ---	304.00000 -3.2	-111.00000 4.4
77	0.00000 ---	0.00000 ---	0.00000 ---	307.00000 1.6	-151.00000 9.2
78	0.00000 ---	0.00000 ---	0.00000 ---	285.00000 -7.0	-203.00000 31.8
FA	EGC05R05	EGC05R10A	EGC05R10B	EGC06R05	EGC06R10A
	IRCL	IRCL	IRCL	IRCL	IRCL
71	0.00000	0.00000	0.00000	0.00000	0.00000
72	0.00000 ---	0.00000 ---	0.00000 ---	0.00000 ---	0.00000 ---
73	0.00000 ---	0.00000 ---	0.00000 ---	0.00000 ---	0.00000 ---
74	0.00000 ---	0.00000 ---	0.00000 ---	0.00000 ---	0.00000 ---
75	0.00000 ---	0.00000 ---	0.00000 ---	0.00000 ---	0.00000 ---
76	-0.00000 ---	0.00000 ---	0.00000 ---	10.00000 ---	0.00000 ---
77	-20.00000 303.3	0.00000 ---	0.00000 ---	-115.00000 -250.0	0.00000 ---
78	14.00000 -155.2	0.00000 ---	0.00000 ---	-65.00000 -56.4	0.00000 ---

FA	EBC068100		EBC068102		EBC07A001		EBC07A005		EBC07A007	
	IRCL		IRCL		IRCL		IRCL		IRCL	
71	0.00000		0.00000		-5.00000		0.00000		-599.00000	
72	0.00000	---	0.00000	---	0.00000	-100.0	0.00000	---	-630.00000	5.2
73	0.00000	---	0.00000	---	0.00000	---	0.00000	---	-842.00000	31.7
74	0.00000	---	0.00000	---	-1.00000	---	0.00000	---	-857.00000	-21.7
75	0.00000	---	0.00000	---	-7.00000	100.0	0.00000	---	-841.00000	27.6
76	0.00000	---	0.00000	---	-10.00000	100.0	-12.00000	---	-1643.00000	97.7
77	0.00000	---	0.00000	---	-15.00000	7.1	-45.00000	-50.0	-1913.00000	16.8
78	0.00000	---	0.00000	---	-12.00000	-20.0	377.00000	-919.6	-2493.00000	23.7
FA	EBC07A009		EBC07A10A		EBC07A10B		EBC07A104		EBC07B100	
	IRCL		IRCL		IRCL		IRCL		IRCL	
71	-1.00000		0.00000		0.00000		0.00000		-70.00000	
72	-1.00000	0.0	0.00000	---	0.00000	---	0.00000	---	0.00000	-100.0
73	-1.00000	0.0	0.00000	---	0.00000	---	0.00000	---	0.00000	---
74	-1.00000	0.0	0.00000	---	0.00000	---	0.00000	---	-37.00000	---
75	-1.00000	0.0	0.00000	---	0.00000	---	0.00000	---	-30.00000	2.7
76	-2.00000	100.0	0.00000	---	0.00000	---	0.00000	---	-70.00000	105.3
77	-5.00000	150.0	0.00000	---	0.00000	---	0.00000	---	-44.00000	-12.0
78	-7.00000	19.0	0.00000	---	0.00000	---	0.00000	---	-50.00000	-17.6
FA	EBC07B005		EBC07B007		EBC07B008		EBC07B10A		EBC07B10B	
	IRCL		IRCL		IRCL		IRCL		IRCL	
71	0.00000		-37.00000		-12.00000		0.00000		0.00000	
72	0.00000	---	-54.00000	30.5	-37.00000	49.7	0.00000	---	0.00000	---
73	0.00000	---	-65.00000	22.2	-20.00000	17.4	0.00000	---	0.00000	---
74	0.00000	---	-71.00000	7.4	-22.00000	10.0	0.00000	---	0.00000	---
75	0.00000	---	-65.00000	-7.0	-19.00000	-13.4	0.00000	---	0.00000	---
76	2.00000	---	-45.00000	-1.5	-19.00000	0.0	0.00000	---	0.00000	---
77	38.00000	3350.0	-50.00000	-1.2	-14.00000	-15.8	0.00000	---	0.00000	---
78	38.00000	-44.9	-47.00000	-14.9	-18.00000	12.5	0.00000	---	0.00000	---
FA	EBC07B103		EBC07B104		EBC07B10A		EBC07B10B		EBC08B02	
	IRCL		IRCL		IRCL		IRCL		IRCL	
71	124.00000		0.00000		0.00000		0.00000		255.00000	
72	42.00000	-50.0	0.00000	---	0.00000	---	0.00000	---	1319.00000	440.2
73	75.00000	21.0	0.00000	---	0.00000	---	0.00000	---	1047.00000	17.8
74	116.00000	34.7	0.00000	---	0.00000	---	0.00000	---	313.00000	-42.7
75	143.00000	23.3	0.00000	---	0.00000	---	0.00000	---	34.00000	-78.2
76	109.00000	25.9	0.00000	---	0.00000	---	0.00000	---	0.00000	-100.0
77	170.00000	-5.8	0.00000	---	0.00000	---	0.00000	---	0.00000	---
78	107.00000	-1.0	0.00000	---	0.00000	---	0.00000	---	0.00000	---
FA	EBC08B04		EBC08B05		EBC08B07		EBC08B08		EBC08B10A	
	IRCL		IRCL		IRCL		IRCL		IRCL	
71	-202.00000		0.00000		-154.00000		0.00000		0.00000	
72	-220.00000	-18.0	0.00000	---	-102.00000	-33.8	0.00000	---	0.00000	---
73	-243.00000	12.7	0.00000	---	-115.00000	12.7	0.00000	---	0.00000	---
74	-305.00000	23.0	0.00000	---	-95.00000	-17.4	0.00000	---	0.00000	---
75	-234.00000	-23.3	0.00000	---	-346.00000	264.2	0.00000	---	0.00000	---
76	-292.00000	-13.7	-114.00000	---	-133.00000	25.1	0.00000	---	0.00000	---
77	-339.00000	47.3	107.00000	-209.7	-119.00000	0.3	0.00000	---	0.00000	---
78	-337.00000	-0.3	-191.00000	-229.9	-430.00000	34.0	0.00000	---	0.00000	---
FA	EBC08B10B		EBC08B13		EBC08B10		EBC08B15		EBC08B02	
	IRCL		IRCL		IRCL		IRCL		IRCL	
71	0.00000		547.00000		0.00000		44.00000		0.00000	
72	0.00000	---	302.00000	-39.2	0.00000	---	63.00000	43.2	0.00000	---
73	0.00000	---	431.00000	12.0	0.00000	---	71.00000	12.7	0.00000	---
74	0.00000	---	440.00000	3.9	0.00000	---	55.00000	-22.5	0.00000	---
75	0.00000	---	345.00000	-23.0	0.00000	---	72.00000	30.9	0.00000	---
76	0.00000	---	339.00000	-1.7	0.00000	---	40.00000	-5.4	0.00000	---
77	0.00000	---	402.00000	12.2	0.00000	---	50.00000	-24.5	0.00000	---
78	0.00000	---	430.00000	-9.5	0.00000	---	51.00000	0.0	0.00000	---

FA	ERC07R05	ERC07R09	ERC07R10A	ERC07R10B	ERC07R12
	TRCL	TRCL	TRCL	TRCL	TRCL
71	0.00000	0.00000	0.00000	0.00000	0.00000
72	0.00000	0.00000	0.00000	0.00000	0.00000
73	0.00000	0.00000	0.00000	0.00000	0.00000
74	0.00000	0.00000	0.00000	0.00000	0.00000
75	0.00000	0.00000	0.00000	0.00000	0.00000
76	-227.00000	0.00000	0.00000	0.00000	0.00000
77	135.00000	-157.9	220.00000	0.00000	0.00000
78	40.00000	-70.8	1938.00000	709.9	0.00000

FA	ERC10R16	ERC10R22	ERC10R55	ERC10R00B	ERC10R10A
	TRCL	TRCL	TRCL	TRCL	TRCL
71	0.00000	0.00000	0.00000	0.00000	0.00000
72	0.00000	0.00000	0.00000	0.00000	0.00000
73	0.00000	0.00000	0.00000	0.00000	0.00000
74	0.00000	0.00000	0.00000	0.00000	0.00000
75	0.00000	0.00000	0.00000	0.00000	0.00000
76	0.00000	0.00000	-1.00000	17.00000	0.00000
77	0.00000	11.00000	0.00000	-105.0	476.00000
78	0.00000	1.00000	-83.6	0.00000	674.00000

FA	ERC10R10B	ERC10R02	ERC10R55	ERC10R10A	ERC10R10B
	TRCL	TRCL	TRCL	TRCL	TRCL
71	0.00000	0.00000	0.00000	0.00000	0.00000
72	0.00000	42.00000	0.00000	0.00000	0.00000
73	0.00000	24.00000	-30.1	0.00000	0.00000
74	0.00000	70.00000	107.2	0.00000	0.00000
75	0.00000	49.00000	-1.4	0.00000	0.00000
76	0.00000	53.00000	-23.2	-145.00000	0.00000
77	0.00000	11.00000	-22.6	272.00000	-207.6
78	0.00000	77.00000	-87.0	-7.00000	-102.5

FA	ERC12R00B	ERC12R10B	ERC12R02B	ERC12R10A	ERC12R10B
	TRCL	TRCL	TRCL	TRCL	TRCL
71	-101.00000	-2709.00000	0.00000	0.00000	0.00000
72	-233.00000	54.3	-3901.00000	34.1	0.00000
73	-271.00000	7.9	-5035.00000	27.1	0.00000
74	-249.00000	-1.5	-4542.00000	-9.0	0.00000
75	-194.00000	-27.1	-1282.00000	7.5	0.00000
76	-1327.00000	507.2	-6742.00000	30.1	0.00000
77	-5015.00000	275.1	-8391.00000	31.9	1507.00000
78	-11809.00000	137.0	-7211.00000	-13.2	7551.00000

FA	ERC12R07	ERC13R07	ERC11R10A	ERC11R10B	ERC11R10C
	TRCL	TRCL	TRCL	TRCL	TRCL
71	0.00000	-173.00000	0.00000	-3.00000	0.00000
72	0.00000	-159.00000	-0.1	-5.00000	61.7
73	0.00000	-193.00000	21.4	-0.00000	20.0
74	0.00000	-225.00000	18.4	-0.00000	0.0
75	0.00000	-241.00000	0.4	-0.00000	0.0
76	0.00000	-224.00000	-0.2	0.00000	13.3
77	0.00000	-229.00000	2.2	-7.00000	-12.5
78	0.00000	-349.00000	52.0	0.00000	0.0

FA	ERC14R13
	TRCL
71	0.00000
72	0.00000
73	0.00000
74	0.00000
75	0.00000
76	0.00000
77	0.00000
78	0.00000

FA	ELC16810A	ELC16810B	ELC16813	ELC05815	ELC07815
	IRCL	IRCL	IRCL	IRCL	IRCL
71	0.00000	0.00000	11.00000	0.00000	
72	0.00000	0.00000	19.00000 -53.7	0.00000	-1.66751
73	0.00000	0.00000	5.00000 -73.7	0.00000	1.23382 -174.0
74	0.00000	0.00000	11.00000 129.0	0.00000	1.27891 5.2
75	0.00000	0.00000	11.00000 309.9	0.00000	6.00369 -38.1
76	0.00000	0.00000	36.00000 -18.2	0.00000	15.47089 1829.1
77	0.00000	0.00000	36.00000 4.9	0.00000	0.17400 -191.1
78	0.00000	0.00000	36.00000 9.9	0.00000	2.62417 8111.0
FA	ELC07815	ELC10812	ELC10814	ELC11812	ELC11814
	IRCL	IRCL	IRCL	IRCL	IRCL
71					0.00000
72	34.47222	10.61187	5.32593	11.82031	0.00000
73	0.78617 -97.7	11.78578 11.1	0.11483 -97.8	0.00000 -108.0	0.00000
74	5.45524 593.9	16.84048 42.8	3.13488 2827.0	1.89314	0.00000
75	1.07854 -79.9	10.84581 -40.3	-3.18488 -2817.7	10.99229 329.6	0.00000
76	3.41209 210.7	3.32274 -46.9	-2.45649 -10.4	1.34298 -87.4	0.00000
77	7.67866 124.7	1.14387 -63.7	3.92776 -231.6	17.25816 1117.9	0.00000
78	6.98155 -10.0	3.46972 293.6	11.33524 274.4	7.65853 -55.6	0.00000
FA	ELC11814	ELC11814	ELC11815	ELC11812	PA891
	IRCL	IRCL	IRCL	IRCL	IRCL
71					12.56659
72	11.82031	0.95951	0.59359	-0.92876	11.82031 12.0
73	0.00000 -109.0	0.00000 -109.0	-0.56871 -119.2	0.69176 -145.0	16.66000 14.3
74	0.00000	-0.45168	2.12188 -149.4	0.53858 -16.8	19.00000 18.8
75	9.74884	-3.22746 614.5	0.47689 -77.8	-0.10931 -317.7	22.60000 15.3
76	1.28816 -86.8	-1.23854 -81.6	1.27937 171.8	-2.19257 85.3	25.00000 13.6
77	28.13218 1478.4	0.00000 -109.0	0.07455 -31.5	-0.69967 -22.5	25.00000 0.0
78	0.10035 -59.0	2.77885	4.81510 381.4	-6.18596 263.9	25.00000 0.0
FA	PA818PE731	PC81114	PE80213	PE811	PE811
	IRCL	IRCL	IRCL	IRCL	IRCL
71	46.39959	2.17080	325614.06000	10.69699	119.23209
72	78.50200 6.2	2.47809 12.8	395578.68000 21.5	10.69699 0.0	129.11709 0.8
73	166.80000 61.8	3.27000 32.4	489550.93000 23.5	19.56800 15.0	123.11500 2.5
74	124.78810 24.8	11.58900 254.1	561854.08000 2.7	13.00000 13.0	127.83100 4.8
75	125.55959 0.6	11.58900 0.0	676867.03000 -5.0	16.00000 23.1	132.11800 2.3
76	146.25868 18.5	12.38000 6.9	558397.02000 13.4	18.00000 12.5	135.17000 2.3
77	174.40130 19.2	12.38000 0.1	615169.09000 11.8	18.60000 0.0	138.34200 2.3
78	187.49550 7.5	12.78000 2.5	596648.68000 -3.0	18.00000 0.0	141.57200 2.3
FA	PE811	PE811	W10751	TC04819	TC05009
	IRCL	IRCL	IRCL	IRCL	IRCL
71	33.33333	49.60000	444.26000	0.12768	0.01154
72	31.61867 10.0	54.60000 10.2	720.74374 8.5	0.10749 -12.4	0.01217 5.4
73	42.00000 14.5	67.60000 24.1	924.76923 14.4	0.10172 -5.0	0.01355 31.4
74	50.33333 19.0	92.00000 37.3	853.91364 3.5	0.10244 8.7	0.01183 41.8
75	62.00000 23.2	109.60000 8.7	814.43600 -1.6	0.12700 25.9	0.04461 -61.1
76	74.68867 23.7	192.00000 2.0	915.14051 12.4	0.12497 -3.8	0.09327 29.0
77	74.68867 0.0	181.60000 8.8	944.18182 5.4	0.11521 -7.1	0.09539 17.9
78	74.68867 0.0	123.60000 10.8	1639.26230 4.7	0.11659 1.4	0.04978 17.7
FA	TC04819	TC07819	TC07820	TC08019	TC08019
	IRCL	IRCL	IRCL	IRCL	IRCL
71	0.16381	0.00316	0.03510	0.16970	0.00000
72	0.15438 -5.3	0.05138 6.5	0.05167 43.5	0.09944 -11.4	0.01781
73	0.06539 7.1	0.07482 13.8	0.03599 -29.5	0.03157 -49.3	0.06839 -52.9
74	0.17392 8.8	0.12023 25.2	0.04931 12.0	0.07552 119.2	0.03512 318.8
75	0.20934 11.3	0.13858 55.3	0.04734 17.4	0.07392 -2.1	0.03777 7.5
76	0.10615 -7.1	0.12389 -30.6	0.04796 1.3	0.12034 62.7	0.01303 65.5
77	0.20519 10.2	0.14921 13.2	0.03870 -19.3	0.12374 7.9	0.03324 155.9
78	0.19269 -8.6	0.15247 8.7	0.04892 24.1	0.15182 22.7	0.03454 3.9

FA	YC10A109	YC10B109	ZC11A10A	ZC11B05	ZC14R10
	IRCL	IRCL	IRCL	IRCL	IRCL
71	0.00864	0.33576	-0.29813	0.27827	0.14599
72	0.00849 -23.5	0.45228 31.7	-0.21141 -29.1	0.31575 13.5	0.15145 3.7
73	0.00862 28.3	0.51885 13.0	-0.22698 6.9	0.36586 -3.1	0.15155 5.5
74	0.00133 104.4	0.42467 -16.9	-0.26958 28.1	0.30879 1.0	0.19231 20.3
75	0.00239 73.3	0.35314 -18.7	-0.29931 3.3	0.27749 -19.1	0.17512 -8.9
76	0.00184 -19.1	0.37357 5.5	-0.24814 -17.0	0.24593 -4.2	0.15128 -13.4
77	0.00174 -8.3	0.32933 -14.3	-0.21859 -11.7	0.24942 1.3	0.15877 4.9
78	0.00181 3.8	0.29192 -9.2	-0.28928 22.0	0.25345 -6.0	0.13787 -13.2

5-6-2 予測値一覧(1979年~1990年)

(1) 内生変数

FA	G734		CP1		CP1734		CP231		EPC01R01		EPC01R04	
		IRCL		IRCL		IRCL		IRCL		IRCL		IRCL
78	1865.		14335.		241.		6755.		259.		186.	
79	1281.	21.2	17728.	22.0	204.	17.9	7201.	6.4	516.	111.6	516.	177.4
80	1425.	18.4	21070.	18.9	320.	12.7	7652.	6.3	710.	31.4	689.	33.3
81	1582.	11.0	24071.	18.0	359.	12.0	8117.	6.1	1023.	42.5	973.	44.4
82	1743.	11.4	29245.	17.6	400.	11.6	8566.	6.0	1439.	40.7	1489.	41.9
83	1969.	11.7	34325.	17.4	445.	11.3	9124.	6.0	1861.	29.5	1836.	30.1
84	2143.	8.8	40875.	16.8	492.	10.5	9685.	6.1	2497.	-53.4	2397.	-54.3
85	2341.	9.4	48593.	16.0	549.	9.9	10264.	6.0	3202.	49.9	3272.	51.7
86	2549.	9.6	58025.	15.7	612.	9.6	10873.	5.9	4059.	35.1	4229.	35.9
87	2821.	9.8	69232.	15.6	680.	9.5	11521.	6.0	5029.	22.0	5219.	23.9
88	3097.	9.9	81734.	15.6	757.	9.3	12213.	6.0	6179.	23.1	6449.	23.9
89	3349.	7.8	95756.	15.0	842.	8.7	12954.	6.1	7524.	19.4	7794.	19.8
90	3611.	8.1	111786.	14.5	935.	8.3	13729.	6.0	9088.	17.3	9404.	17.4
FA	EPC01E07		EPC01E11		EPC02E03		EPC02E06		EPC03E02		EPC03E03	
		IRCL		IRCL		IRCL		IRCL		IRCL		IRCL
78	-74.		165.		-92568.		37882.		3659.		-19513.	
79	-275.	261.9	233.	121.9	-95982.	3.6	33522.	2.4	7075.	115.2	-15313.	33.0
80	-382.	39.8	298.	27.9	-99982.	-5.2	33922.	1.2	9974.	26.9	-15398.	6.6
81	-637.	66.8	348.	16.8	-10192.	5.5	34322.	1.2	12442.	24.5	-15422.	0.2
82	-942.	17.9	459.	31.9	-10652.	2.9	37572.	9.5	13666.	9.0	-16713.	0.4
83	-1321.	10.2	595.	10.0	-11361.	0.7	44897.	19.5	12977.	-9.9	-16921.	1.3
84	-144.	-74.0	487.	-3.4	-14186.	-2.5	48542.	8.1	14225.	9.4	-17425.	4.1
85	-777.	124.2	497.	0.0	-14186.	1.2	48542.	0.0	17469.	22.8	-17372.	-1.4
86	-1234.	58.8	487.	0.0	-14596.	-6.4	55852.	15.1	17271.	-1.1	-20487.	19.0
87	-1724.	39.7	487.	0.0	-12396.	0.9	55852.	0.0	20948.	29.3	-20487.	-1.4
88	-2254.	39.6	487.	0.0	-13196.	0.9	55852.	0.0	24979.	10.8	-20596.	-1.5
89	-2789.	24.2	487.	0.0	-13996.	0.9	55852.	0.0	28741.	18.3	-17786.	-1.5
90	-3373.	20.5	487.	0.0	-14596.	0.6	55852.	0.0	33254.	14.9	-11456.	-1.7
FA	EPC03E04		EPC03E05		EPC03E06		EPC03E07		EPC03E08		EPC03E09	
		IRCL		IRCL		IRCL		IRCL		IRCL		IRCL
78	-619.		46.		-7783.		-3010.		-25.		31671.	
79	-650.	6.7	0.	-109.0	-8489.	3.9	-3296.	6.7	-45.	89.0	32847.	3.7
80	-810.	6.2	0.	---	-4892.	-24.7	-3524.	6.9	-45.	0.0	33242.	1.2
81	-730.	5.0	0.	---	-3710.	-39.1	-3746.	6.7	-45.	0.0	33637.	1.2
82	-780.	6.0	0.	---	-3920.	3.2	-4910.	6.8	-45.	0.0	34816.	9.5
83	-835.	7.1	0.	---	-4242.	11.3	-4245.	4.9	-45.	0.0	44969.	19.6
84	-889.	5.4	0.	---	-3779.	-11.3	-5263.	24.9	-45.	0.0	47677.	0.2
85	-925.	5.1	0.	---	-334.	-91.2	-5447.	3.9	-45.	0.0	47477.	0.0
86	-975.	5.4	0.	---	-3899.	1063.9	-5684.	4.0	-45.	0.0	54594.	15.1
87	-1030.	5.4	0.	---	16.	-160.4	-5914.	4.4	-45.	0.0	54594.	0.0
88	-1070.	5.8	0.	---	4192.	01040	-6157.	4.1	-45.	0.0	54594.	0.0
89	-1155.	6.0	0.	---	8509.	102.7	-6416.	4.2	-45.	0.0	54594.	0.0
90	-1230.	4.5	0.	---	13049.	53.7	-8169.	4.3	-45.	0.0	54594.	0.0
FA	EPC03E09		EPC03E10		EPC03E11		EPC03E12		EPC03E13			
		IRCL		IRCL		IRCL		IRCL		IRCL		
78	2612.		0.		0.		21238.		3030.		2443.	
79	2569.	-4.3	0.	---	0.	---	23110.	12.6	4170.	9.1	8468.	15.6
80	2650.	1.0	0.	---	0.	---	24231.	9.7	4569.	9.3	9398.	9.2
81	2750.	3.0	0.	---	0.	---	28071.	10.4	5159.	12.9	10247.	9.0
82	2750.	0.0	0.	---	0.	---	31765.	9.8	5637.	12.6	11163.	8.9
83	2750.	0.0	0.	---	0.	---	39286.	20.8	6415.	10.9	12154.	8.9
84	2750.	0.0	0.	---	0.	---	41340.	7.9	7665.	9.6	13192.	8.5
85	2750.	0.0	0.	---	0.	---	44509.	7.8	7736.	9.5	14298.	8.4
86	2750.	0.0	0.	---	0.	---	48924.	7.7	8456.	9.3	15402.	8.3
87	2750.	0.0	0.	---	0.	---	53701.	7.7	9239.	9.3	16553.	8.2
88	2750.	0.0	0.	---	0.	---	58431.	7.6	10092.	9.2	18117.	8.1
89	2750.	0.0	0.	---	0.	---	59493.	7.1	10814.	8.4	19543.	7.9
90	2750.	0.0	0.	---	0.	---	63977.	7.2	11658.	8.3	21057.	7.7

FA	EBC03R14		EBC03R15		EBC03R16		EBC04R02		EBC04R05		EBC04R07A	
	IRCL		IRCL		IRCL		IRCL		IRCL		IRCL	
78	8555.		973.		436.		3.		-119.		3743.	
79	1477.	10.8	1199.	22.3	435.	6.4	423.	4011.0	423.	-455.8	3959.	5.8
80	10499.	10.7	1269.	7.4	495.	6.5	871.	105.8	871.	105.8	4097.	1.2
81	11552.	10.1	1385.	8.2	528.	6.5	1369.	57.1	1369.	57.1	4054.	1.2
82	12446.	9.6	1504.	8.7	563.	6.6	1579.	15.4	1579.	15.4	4441.	9.5
83	13034.	9.2	1643.	9.1	629.	659.2	1363.	-13.7	1363.	-13.7	5312.	19.6
84	15865.	8.9	1759.	7.1	629.	0.9	1633.	19.8	1633.	19.8	5747.	8.2
85	16354.	8.6	1893.	7.6	629.	1.0	2392.	46.5	2392.	46.5	5747.	0.0
86	17709.	8.2	2041.	7.9	6342.	1.0	2339.	-2.2	2339.	-2.2	6616.	15.1
87	19118.	8.0	2211.	8.2	6389.	1.1	3217.	37.6	3217.	37.6	6616.	9.0
88	20590.	7.7	2394.	8.4	6439.	1.1	4162.	29.4	4162.	29.4	6616.	9.0
89	22149.	7.6	2557.	8.7	6499.	1.1	5169.	24.2	5169.	24.2	6616.	9.0
90	23781.	7.4	2739.	7.1	6544.	1.2	6241.	20.7	6241.	20.7	6616.	9.0

FA	EBC04R11		EBC04R13		EBC05R02		EBC05R04		EBC05R07A		EBC05R11	
	IRCL		IRCL		IRCL		IRCL		IRCL		IRCL	
78	3928.		3644.		452.		469.		25.		731.	
79	4393.	11.4	4093.	12.0	1011.	55.1	776.	16.2	59.	97.6	826.	13.0
80	4878.	11.3	4578.	12.1	1134.	12.2	864.	11.4	51.	1.2	915.	10.7
81	5423.	11.2	5123.	11.9	1269.	11.9	959.	11.0	51.	1.2	1010.	10.4
82	4921.	11.0	5721.	11.7	1417.	11.7	1057.	10.3	56.	9.5	1113.	10.2
83	4674.	10.9	4374.	11.5	1549.	10.7	1159.	9.6	67.	19.4	1226.	10.1
84	7379.	10.4	7079.	11.1	1729.	9.6	1265.	9.1	72.	8.2	1337.	9.1
85	8138.	10.3	7838.	10.7	1834.	9.6	1381.	9.4	72.	0.0	1458.	8.9
86	8955.	10.0	8455.	10.4	2051.	8.9	1501.	8.5	83.	15.1	1595.	8.8
87	9833.	9.8	9333.	10.1	2245.	9.4	1648.	9.2	83.	0.0	1723.	8.7
88	10778.	9.6	10478.	9.9	2455.	9.3	1799.	9.1	83.	0.0	1873.	8.7
89	11785.	9.3	11485.	9.4	2669.	8.7	1939.	8.3	83.	0.0	2022.	8.6
90	12858.	9.1	12558.	9.3	2903.	8.8	2099.	8.2	83.	0.0	2181.	7.9

FA	EBC05R13		EBC05R15		EBC06R02		EBC06R04		EBC06R07A		EBC06R11	
	IRCL		IRCL		IRCL		IRCL		IRCL		IRCL	
78	477.		54.		698.		813.		6136.		8475.	
79	761.	12.3	65.	21.2	2749.	230.7	2169.	265.2	6454.	5.2	9474.	11.2
80	842.	10.8	72.	10.4	3594.	31.2	3694.	31.2	6532.	1.2	10428.	10.7
81	930.	10.1	80.	11.0	4573.	25.1	4873.	25.1	6610.	1.2	11433.	10.1
82	1024.	10.1	89.	11.4	5347.	9.7	5347.	9.7	7240.	9.5	12589.	9.6
83	1124.	10.0	109.	11.7	5699.	-4.9	5699.	-4.9	8659.	19.6	13747.	9.2
84	1228.	9.1	169.	8.8	5699.	10.1	5699.	10.1	9368.	8.2	14968.	8.9
85	1338.	8.9	119.	9.4	6079.	22.8	6079.	22.8	9368.	0.0	16247.	8.5
86	1455.	8.7	139.	9.6	6797.	-1.2	6797.	-1.2	10784.	15.1	17583.	8.2
87	1583.	8.6	143.	9.8	8195.	29.4	8195.	29.4	10784.	0.0	18922.	8.0
88	1716.	8.6	157.	9.9	8463.	17.9	8463.	17.9	10784.	0.0	20450.	7.7
89	1853.	8.0	169.	7.8	11219.	14.0	11219.	14.0	10784.	0.0	21994.	7.6
90	1998.	7.9	165.	8.1	12828.	14.4	12828.	14.4	10784.	0.0	23615.	7.4

FA	EBC06R14		EBC07R02		EBC07R04		EBC07R07A		EBC07R11		EBC07R12	
	IRCL		IRCL		IRCL		IRCL		IRCL		IRCL	
78	8425.		2024.		2489.		4893.		4334.		1291.	
79	9424.	11.2	3339.	45.0	3324.	39.5	4025.	-5.3	5374.	24.0	1549.	19.3
80	10428.	10.7	3688.	16.5	3873.	16.5	4189.	1.2	5828.	8.4	1764.	10.8
81	11483.	10.1	4587.	18.0	4574.	10.1	4736.	1.2	6423.	10.2	1959.	12.2
82	12589.	9.6	4952.	7.9	4937.	7.9	5187.	9.5	7058.	10.0	2319.	14.0
83	13747.	9.2	4744.	-3.0	4747.	-3.0	4244.	19.6	7713.	9.2	2610.	12.0
84	14949.	8.9	5659.	6.2	5844.	6.2	6712.	8.2	8323.	7.9	2993.	10.9
85	16247.	8.5	5118.	17.0	5893.	17.0	6712.	0.0	8977.	7.9	3210.	10.6
86	17583.	8.2	5810.	-1.7	5893.	-1.7	7728.	15.1	9477.	7.8	3537.	10.2
87	18982.	8.0	6864.	14.9	6789.	17.0	7728.	0.0	10432.	7.8	3816.	10.0
88	20459.	7.7	7865.	15.4	7859.	15.6	7728.	0.0	11254.	7.8	4272.	9.8
89	21994.	7.6	8113.	13.3	8092.	13.3	7728.	0.0	12039.	7.0	4447.	8.8
90	23615.	7.4	10039.	12.5	10015.	12.6	7728.	0.0	12893.	7.0	5249.	8.4



FA	EBC07A13		EBC07A15		EBC07B02		EBC07B05		EBC07B07A		EBC07B11	
	IRCL		IRCL		IRCL		IRCL		IRCL		IRCL	
78	2687.		579.		0.		38.		1538.		1101.	
79	3135.	16.7	782.	21.2	51.		-9.	-123.1	1497.	-2.7	1419.	1.3
80	3148.	6.8	775.	18.1	825.	144.8	69.	-784.6	1515.	1.2	1507.	6.1
81	3584.	6.5	869.	11.8	281.	108.1	174.	224.4	1533.	1.2	1660.	18.2
82	3788.	6.3	959.	11.4	288.	19.5	223.	14.0	1679.	9.5	1834.	19.5
83	4024.	6.2	1071.	11.7	133.	-53.8	63.	-74.8	2069.	19.6	2003.	9.2
84	4255.	5.7	1165.	8.8	133.	-0.1	83.	-0.2	2473.	8.2	2167.	9.2
85	4493.	5.6	1274.	9.4	315.	137.4	245.	289.4	2473.	0.9	2349.	9.4
86	4743.	5.6	1397.	9.8	185.	-41.2	115.	-53.0	2592.	15.1	2548.	9.5
87	5089.	5.6	1533.	9.8	484.	119.4	336.	191.1	2592.	0.9	2769.	9.7
88	5293.	5.7	1685.	9.9	653.	69.6	583.	73.2	2542.	0.0	3114.	9.9
89	5575.	5.3	1816.	7.8	990.	37.8	819.	42.3	2542.	0.8	3243.	8.2
90	5878.	5.3	1983.	8.1	1170.	38.8	1199.	32.6	2507.	0.8	3533.	8.1

FA	EBC07B12		EBC07B15		EBC07B02		EBC07B01		EBC07B15		EBC07B16	
	IRCL		IRCL		IRCL		IRCL		IRCL		IRCL	
78	1189.		54.		2024.		-48.		415.		2439.	
79	1174.	-8.5	45.	21.2	3398.	87.5	-75.	10.3	0.	-189.8	3355.	35.9
80	1254.	6.8	72.	18.4	4014.	18.4	-89.	6.7	0.		3934.	19.7
81	1489.	11.4	89.	11.8	4850.	20.8	-89.	0.8	0.		4770.	21.3
82	1568.	11.8	87.	11.4	5248.	8.8	-88.	0.8	0.		5169.	8.2
83	1729.	10.1	109.	11.7	4897.	-6.5	-85.	6.3	0.		4812.	-6.7
84	1878.	9.8	107.	8.8	5192.	6.8	-85.	0.8	0.		5187.	6.1
85	2050.	9.2	119.	9.4	6233.	28.1	-85.	8.8	0.		6148.	20.4
86	2239.	9.2	139.	9.4	6803.	-3.7	-85.	8.8	0.		6918.	-3.7
87	2444.	9.3	143.	9.8	7218.	28.1	-85.	0.8	0.		7125.	28.1
88	2679.	9.5	157.	9.8	8518.	18.1	-85.	8.8	0.		8433.	18.4
89	2913.	8.8	167.	7.8	9842.	15.2	-85.	0.8	0.		9227.	15.3
90	3174.	8.8	183.	8.1	11209.	14.1	-85.	0.8	0.		11135.	14.3

FA	EBC07B07		EBC07B08		EBC07B09A		EBC07B10		EBC07B12		EBC07B13	
	IRCL		IRCL		IRCL		IRCL		IRCL		IRCL	
78	-2452.		-25.		4121.		5737.		2471.		2697.	
79	-2514.	5.9	-45.	88.8	4122.	-1.7	6795.	18.4	2713.	9.8	3113.	23.4
80	-2747.	5.9	-45.	0.8	4195.	1.2	7335.	7.9	2168.	9.1	3528.	6.4
81	-2911.	5.9	-45.	0.8	4249.	1.2	8183.	19.2	3358.	14.8	3746.	6.1
82	-3083.	5.9	-45.	0.8	4867.	9.5	8519.	10.1	3883.	14.3	3768.	6.8
83	-3265.	5.9	-45.	0.8	6213.	19.6	9715.	9.2	4348.	31.8	4284.	5.9
84	-3458.	5.9	-45.	0.8	8885.	8.2	10119.	8.8	4281.	18.2	4435.	5.5
85	-3692.	5.9	-45.	0.8	8885.	0.8	11324.	8.8	5248.	18.8	4673.	5.4
86	-3877.	5.9	-45.	0.8	10230.	15.1	12225.	7.9	5775.	9.8	4923.	5.4
87	-4189.	5.9	-45.	0.8	10230.	0.8	13282.	8.8	6334.	9.7	5189.	5.4
88	-4352.	5.9	-45.	0.8	10230.	0.8	14266.	8.1	6951.	9.7	5473.	5.5
89	-4611.	5.9	-45.	0.8	10230.	0.8	15397.	7.3	7582.	8.8	5755.	5.2
90	-4884.	5.9	-45.	0.8	10230.	0.8	16416.	7.3	8219.	8.7	6051.	5.1

FA	EBC07B14		EBC07B15		EBC08B03		EBC08B04		EBC08B07A		EBC08B11	
	IRCL		IRCL		IRCL		IRCL		IRCL		IRCL	
78	0.		579.		-411.		-483.		4882.		1851.	
79	0.		747.	32.5	-1415.	241.3	-1755.	191.8	4332.	-9.7	1937.	4.6
80	0.		847.	18.4	-1249.	-11.7	-1589.	-9.4	4444.	1.2	2459.	7.8
81	0.		948.	11.8	-1074.	-14.8	-1414.	-11.8	4497.	1.2	2233.	7.3
82	0.		1048.	11.4	-1254.	-16.7	-1519.	12.7	4926.	9.5	2397.	7.4
83	0.		1178.	11.7	-2024.	61.6	-2384.	48.5	5692.	19.6	2575.	7.4
84	0.		1274.	8.8	-1475.	-27.2	-1815.	-23.3	6374.	8.2	2751.	7.8
85	0.		1393.	9.4	-3284.	-13.8	-1624.	-18.5	6374.	8.8	2945.	6.9
86	0.		1527.	9.8	-2014.	59.2	-2384.	46.8	7339.	15.1	3159.	6.9
87	0.		1674.	9.8	-1824.	-18.8	-2444.	-9.2	7339.	8.8	3370.	7.8
88	0.		1842.	9.9	-1588.	-13.8	-1928.	-18.9	7339.	8.8	3697.	7.8
89	0.		1985.	7.8	-1348.	-15.1	-1418.	-12.4	7339.	8.8	3866.	6.6
90	0.		2141.	8.1	-1616.	-18.9	-1431.	-15.1	7339.	8.8	4180.	6.6

FA	EBC0801Z		EBC08003		EBC08006		EBC08009A		EBC08011		EBC08013	
	IRCL		IRCL		IRCL		IRCL		IRCL		IRCL	
78	1369.		-2227.		-2107.		988.		0.		-657.	
79	1429.	5.1	-2879.	19.1	-2879.	12.5	898.	-18.8	0.	---	-475.	-27.7
80	1569.	9.8	-2909.	9.4	-2909.	9.4	909.	1.2	0.	---	-618.	29.6
81	1719.	9.5	-2929.	9.4	-2929.	9.4	920.	1.2	0.	---	-793.	11.5
82	1879.	9.3	-3689.	3.0	-3689.	3.0	1608.	9.5	0.	---	-677.	-1.0
83	2053.	9.3	-85.	-97.2	415.	-133.8	1285.	19.6	3620.	---	-696.	-9.1
84	2228.	9.5	-184.	115.9	316.	-23.8	1384.	8.2	3620.	0.0	-668.	-1.1
85	2414.	9.4	-184.	0.0	316.	0.0	1384.	0.0	3620.	0.0	-673.	-2.2
86	2614.	8.3	-381.	197.4	119.	-62.4	1581.	15.1	3620.	0.0	-657.	-0.5
87	2828.	8.2	-381.	0.0	119.	0.0	1581.	0.0	3620.	0.0	-652.	-2.6
88	3049.	8.2	-381.	9.9	119.	9.9	1581.	0.0	3620.	0.0	-632.	-2.1
89	3279.	7.6	-381.	0.0	119.	0.0	1581.	0.0	3620.	0.0	-612.	-3.2
90	3542.	7.5	-381.	0.0	119.	0.0	1581.	0.0	3620.	0.0	-590.	-3.5

FA	EBC10A06		EBC10A09A		EBC10A11		EBC10A12		EBC10A14		EBC10B03	
	IRCL		IRCL		IRCL		IRCL		IRCL		IRCL	
78	-652.		58.		89.		32.		49.		-8218.	
79	-671.	-27.8	69.	3.1	89.	11.1	35.	9.9	51.	12.8	-19525.	28.1
80	-610.	-29.6	61.	1.2	169.	12.4	39.	9.8	62.	14.5	-19625.	1.0
81	-619.	14.6	61.	1.2	112.	11.8	42.	9.8	70.	13.1	-19724.	0.9
82	-693.	-1.0	67.	9.5	125.	11.3	47.	9.9	78.	12.1	-11755.	9.6
83	-692.	-0.1	69.	19.6	139.	11.0	51.	10.1	87.	11.5	-14117.	29.1
84	-684.	-1.1	67.	8.2	153.	10.5	56.	9.5	92.	11.1	-15278.	8.2
85	-667.	-2.2	67.	0.0	168.	10.0	62.	9.5	107.	10.4	-15237.	-0.3
86	-615.	-9.5	100.	15.1	185.	9.8	67.	9.6	117.	9.9	-17592.	15.5
87	-618.	-2.7	169.	0.0	282.	9.6	74.	9.7	128.	9.5	-12545.	-0.3
88	-629.	-3.0	169.	0.0	222.	9.5	81.	9.8	148.	9.3	-12475.	-0.3
89	-618.	-3.2	169.	9.9	242.	9.2	67.	9.3	153.	9.2	-12444.	-0.3
90	-586.	-3.6	169.	9.9	264.	8.9	77.	9.3	167.	8.7	-12319.	-0.3

FA	EBC10B06		EBC10B09A		EBC10B11		EBC10B16		EBC10B2		EBC10C03	
	IRCL		IRCL		IRCL		IRCL		IRCL		IRCL	
78	-8167.		9329.		436.		436.		81.		-8875.	
79	-10448.	28.2	10313.	17.4	435.	6.6	465.	6.6	81.	0.0	-11869.	23.9
80	-10548.	1.0	11814.	1.2	495.	6.5	455.	6.5	81.	0.0	-12440.	2.2
81	-10447.	0.9	11175.	1.2	528.	6.5	528.	6.5	81.	0.0	-11428.	1.7
82	-11678.	9.7	12241.	9.5	563.	6.6	543.	6.6	81.	0.0	-12452.	9.9
83	-11319.	20.2	14349.	19.4	619.	6.7	609.	6.7	81.	0.0	-14813.	19.0
84	-15201.	8.3	15839.	8.2	638.	6.3	638.	6.3	81.	0.0	-15764.	7.8
85	-15168.	-0.3	15839.	0.0	679.	6.3	679.	6.3	81.	0.0	-15910.	-0.3
86	-17515.	15.5	18237.	15.1	722.	6.1	722.	6.1	81.	0.0	-18241.	14.8
87	-17468.	-0.3	18237.	0.0	769.	6.5	769.	6.5	81.	0.0	-18197.	-0.4
88	-17418.	-0.3	18237.	0.0	819.	6.5	819.	6.5	81.	0.0	-18127.	-0.4
89	-17347.	-0.3	18237.	0.0	870.	6.2	870.	6.2	81.	0.0	-18056.	-0.4
90	-17313.	-0.3	18237.	0.0	924.	6.2	924.	6.2	81.	0.0	-17981.	-0.4

FA	EBC10B05		EBC10B06		EBC10B07A		EBC10B08		EBC10B18A		EBC10B19B	
	IRCL		IRCL		IRCL		IRCL		IRCL		IRCL	
78	-7.		-8299.		9370.		874.		-1.		0.	
79	0.	-109.4	-16919.	24.1	10972.	17.0	569.	-25.8	0.	-109.0	0.	---
80	0.	---	-18159.	2.2	11181.	1.2	650.	10.0	0.	---	0.	---
81	0.	---	-11347.	1.7	11236.	1.2	758.	15.4	0.	---	0.	---
82	0.	---	-12371.	9.0	12388.	9.5	758.	0.0	0.	---	0.	---
83	0.	---	-14732.	19.1	14721.	19.6	758.	0.0	0.	---	0.	---
84	0.	---	-15815.	7.8	15924.	8.2	758.	0.0	0.	---	0.	---
85	0.	---	-15828.	-0.4	15924.	0.0	758.	0.0	0.	---	0.	---
86	0.	---	-18189.	11.9	18337.	15.1	758.	0.0	0.	---	0.	---
87	0.	---	-18116.	-0.4	18337.	0.0	758.	0.0	0.	---	0.	---
88	0.	---	-18443.	-0.4	18337.	0.0	758.	-0.0	0.	---	0.	---
89	0.	---	-19325.	-9.4	18337.	0.0	758.	0.0	0.	---	0.	---
90	0.	---	-17918.	-9.4	18337.	0.0	758.	0.0	0.	---	0.	---

FA	EBC10R11		EBC10R12		EBC10R14		EBC10R16		EBC11AR01		EBC11AR06	
	IRCL		IRCL		IRCL		IRCL		IRCL		IRCL	
78	516.		32.		49.		436.		30327.		30327.	
79	551.	7.3	35.	9.9	51.	12.0	465.	6.8	21819.	-3.4	27859.	-1.4
80	595.	7.5	39.	9.8	62.	14.5	495.	6.5	33966.	13.6	33966.	13.6
81	619.	7.4	42.	9.8	70.	13.1	528.	6.5	34446.	1.4	34446.	1.4
82	687.	7.4	47.	9.9	78.	12.1	583.	6.8	41431.	29.3	41431.	29.3
83	739.	7.5	51.	10.1	87.	11.5	689.	6.7	50775.	22.6	50775.	22.6
84	791.	7.1	56.	9.5	97.	11.1	838.	6.3	60976.	18.3	60976.	18.3
85	817.	7.1	62.	9.5	107.	10.4	879.	6.3	60513.	9.7	60513.	9.7
86	907.	7.1	67.	9.6	117.	9.9	722.	6.4	60995.	0.0	60995.	0.0
87	971.	7.1	71.	9.7	128.	9.5	769.	6.5	61529.	0.9	61529.	0.9
88	1041.	7.2	81.	9.8	140.	9.3	819.	6.5	62123.	1.0	62123.	1.0
89	1112.	6.8	89.	9.3	153.	9.2	876.	6.2	62748.	1.0	62748.	1.0
90	1187.	6.8	97.	9.3	167.	8.7	924.	6.2	63415.	1.1	63415.	1.1

FA	EBC11AR08		EBC11AR10		EBC11AR11		EBC11AR12		EBC11AR14		EBC11AR16	
	IRCL		IRCL		IRCL		IRCL		IRCL		IRCL	
78	-45.		-6589.		2225.		1139.		2.		1684.	
79	-54.	29.3	-1185.	47.2	2486.	9.9	1252.	9.9	2.	6.6	1192.	9.9
80	-54.	0.2	-5895.	13.6	2485.	9.8	1375.	9.8	2.	4.1	1367.	9.8
81	-54.	0.3	-5167.	1.4	2189.	9.8	8510.	9.8	2.	6.1	1437.	9.8
82	-55.	0.3	-8215.	20.3	3242.	9.9	1469.	9.9	3.	6.0	1589.	9.9
83	-55.	0.3	-7616.	22.6	3588.	10.1	1827.	10.1	3.	6.0	1731.	10.1
84	-55.	0.3	-9611.	10.3	3197.	9.5	2489.	9.5	3.	6.1	1984.	9.5
85	-55.	0.3	-9977.	0.7	4278.	9.5	2198.	9.5	3.	6.0	2495.	9.5
86	-55.	0.3	-9149.	0.0	4882.	9.6	2480.	9.6	3.	5.9	2284.	9.6
87	-55.	0.3	-9229.	0.9	5142.	9.7	2833.	9.7	3.	6.0	2506.	9.7
88	-56.	0.4	-9318.	1.0	5686.	9.8	2811.	9.8	4.	6.0	2751.	9.8
89	-56.	0.4	-9411.	1.0	6179.	9.3	3159.	9.3	4.	6.1	3007.	9.3
90	-56.	0.4	-9512.	1.1	6744.	9.3	3453.	9.3	4.	6.0	3286.	9.3

FA	EBC11CR03		EBC11CR04		EBC11CR08		EBC11CR11		EBC11CR14		EBC11CR16	
	IRCL		IRCL		IRCL		IRCL		IRCL		IRCL	
78	-7519.		-7519.		28.		14.		14.		30327.	
79	-11146.	48.2	-11146.	48.2	9.	-51.3	2.	-84.8	2.	-84.8	21899.	-3.4
80	-13691.	24.6	-13691.	24.6	9.	1.5	2.	6.3	2.	6.3	33966.	13.6
81	-13921.	0.2	-13921.	0.2	9.	1.5	2.	6.1	2.	6.1	34446.	1.4
82	-19041.	36.5	-19041.	36.5	10.	1.5	3.	6.0	3.	6.0	41431.	29.3
83	-25856.	36.1	-25856.	36.1	10.	1.4	3.	6.0	3.	6.0	50775.	22.6
84	-32668.	26.3	-32668.	26.3	10.	1.7	3.	6.1	3.	6.1	60976.	18.3
85	-32668.	0.0	-32668.	0.0	10.	1.7	3.	6.0	3.	6.0	60513.	9.7
86	-32668.	0.0	-32668.	0.0	10.	1.8	3.	5.9	3.	5.9	60995.	0.0
87	-32668.	0.0	-32668.	0.0	10.	1.9	3.	6.0	3.	6.0	61529.	0.9
88	-32668.	0.0	-32668.	0.0	11.	2.0	4.	6.0	4.	6.0	62123.	1.0
89	-32668.	0.0	-32668.	0.0	11.	2.1	4.	6.1	4.	6.1	62748.	1.0
90	-32668.	0.0	-32668.	0.0	11.	2.1	4.	6.0	4.	6.0	63415.	1.1

FA	EBC11CR03		EBC11CR06		EBC11CR08		EBC11CR10		EBC11CR14	
	IRCL		IRCL		IRCL		IRCL		IRCL	
78	-7519.		22888.		29.		-1335.		6599.	
79	-11146.	48.2	18753.	-17.8	-45.	-325.8	-4929.	-7.3	-1155.	-152.8
80	-13691.	24.6	24975.	7.0	-45.	0.9	-4492.	11.7	-5495.	13.6
81	-13921.	0.2	29525.	2.2	-45.	0.0	-4686.	2.5	-5167.	1.4
82	-19041.	36.5	22439.	9.3	-45.	0.0	-5171.	12.3	-6215.	29.3
83	-25856.	36.1	24919.	11.1	-45.	0.9	-5932.	14.7	-7616.	22.6
84	-32668.	26.3	27419.	10.0	-45.	0.0	-6589.	12.8	-9611.	10.3
85	-32668.	0.0	27847.	1.6	-45.	0.0	-6589.	0.0	-9977.	0.7
86	-32668.	0.0	28329.	1.7	-45.	0.0	-6889.	0.0	-9149.	0.0
87	-32668.	0.0	28883.	1.9	-45.	0.0	-6889.	0.0	-9229.	0.9
88	-32668.	0.0	29457.	2.1	-45.	0.0	-6889.	0.0	-9318.	1.0
89	-32668.	0.0	30074.	2.1	-45.	0.0	-6889.	0.0	-9411.	1.0
90	-32668.	0.0	30749.	2.2	-45.	0.0	-6889.	0.0	-9512.	1.1

FA	EDC11R10	EDC11R11	EDC11R12	EDC11R14	EDC11R16	EDC12R01
	IRCL	IRCL	IRCL	IRCL	IRCL	IRCL
78	-7721.	2139.	1139.	14.	1084.	0.
79	-7755. 0.4	2110. 9.4	1252. 9.9	4. -23.3	1192. 9.9	0. ---
80	-7755. 0.0	2689. 9.0	1375. 9.0	5. 6.3	1389. 9.8	0. ---
81	-7755. 0.0	2952. 9.0	1510. 9.8	5. 6.1	1437. 9.8	0. ---
82	-7755. 0.0	3216. 9.9	1669. 9.9	5. 6.0	1589. 9.9	0. ---
83	-7755. 0.0	3571. 10.1	1827. 10.1	5. 6.0	1739. 10.1	0. ---
84	-7755. 0.0	3889. 9.5	2000. 9.5	6. 6.1	1901. 9.5	0. ---
85	-7755. 0.0	4201. 9.5	2190. 9.5	6. 6.0	2055. 9.5	0. ---
86	-7755. 0.0	4693. 9.6	2400. 9.6	6. 5.9	2281. 9.6	0. ---
87	-7755. 0.0	5145. 9.7	2633. 9.7	7. 6.0	2501. 9.7	0. ---
88	-7755. 0.0	5619. 9.8	2891. 9.8	7. 6.0	2751. 9.8	0. ---
89	-7755. 0.0	6174. 9.3	3159. 9.3	8. 6.1	3007. 9.3	0. ---
90	-7755. 0.0	6740. 9.3	3453. 9.3	8. 6.0	3286. 9.3	0. ---

FA	EDC12R06	EDC12R10	EDC13R01	EDC13R06	EDC13R10	EDC14R06
	IRCL	IRCL	IRCL	IRCL	IRCL	IRCL
78	0.	0.	1241.	1241.	-893.	4407.
79	0. ---	0. ---	1421. 14.5	1421. 14.5	-1022. 14.5	3970. -9.9
80	0. ---	0. ---	1817. 27.9	1817. 27.9	-1307. 27.9	4415. 11.2
81	0. ---	0. ---	1867. 2.8	1867. 2.8	-1344. 2.8	4921. 11.5
82	0. ---	0. ---	1888. 1.0	1888. 1.0	-1357. 1.0	5191. 10.5
83	0. ---	0. ---	1980. 5.0	1980. 5.0	-1421. 5.0	6091. 11.0
84	0. ---	0. ---	3919. 18.0	3919. 18.0	-2820. 18.0	6755. 10.1
85	0. ---	0. ---	3937. 0.5	3937. 0.5	-2833. 0.5	7310. 9.6
86	0. ---	0. ---	3955. 0.5	3955. 0.5	-2844. 0.5	8027. 9.2
87	0. ---	0. ---	3973. 0.5	3973. 0.5	-2859. 0.4	8752. 9.0
88	0. ---	0. ---	3971. 0.5	3971. 0.5	-2872. 0.5	9531. 8.9
89	0. ---	0. ---	4912. 0.5	4912. 0.5	-2897. 0.5	10340. 8.5
90	0. ---	0. ---	4939. 0.5	4939. 0.5	-2909. 0.5	11192. 8.2

FA	EDC14R07	EDC14R10	EDC14R11	EDC14R12	EDC14R14	EDC14R15
	IRCL	IRCL	IRCL	IRCL	IRCL	IRCL
78	1847.	-154.	923.	574.	302.	47.
79	1891. 8.6	-179. 16.0	1812. 9.7	661. 15.6	292. -3.5	57. 21.2
80	1825. 11.2	-199. 11.2	1926. 11.2	747. 12.5	318. 8.4	65. 10.1
81	1876. 11.5	-221. 11.5	1255. 11.5	843. 12.9	342. 8.2	70. 11.0
82	1847. 11.5	-247. 11.5	1439. 11.5	952. 12.9	370. 8.1	78. 11.4
83	1827. 11.0	-274. 11.0	1553. 11.0	1018. 12.9	400. 8.1	87. 11.7
84	2812. 10.1	-302. 10.1	1710. 10.1	1189. 10.9	433. 8.2	95. 8.8
85	2205. 9.6	-331. 9.6	1874. 9.6	1393. 10.2	468. 8.0	103. 9.4
86	2489. 9.2	-361. 9.2	2047. 9.2	1429. 9.7	505. 8.0	113. 9.6
87	2826. 9.0	-394. 9.0	2232. 9.0	1562. 9.3	545. 8.0	124. 9.8
88	2659. 8.9	-429. 8.9	2430. 8.9	1704. 9.1	589. 8.1	137. 9.9
89	3102. 8.5	-465. 8.5	2637. 8.5	1851. 8.6	630. 8.2	147. 7.8
90	3359. 8.2	-504. 8.2	2854. 8.2	2006. 8.3	687. 8.0	159. 8.1

FA	EDC15R01	EDC15R02	EDC15R03	EDC15R04	EDC15R05	EDC15R06
	IRCL	IRCL	IRCL	IRCL	IRCL	IRCL
78	151481.	9893.	-111829.	-467.	-520.	49129.
79	155868. 2.4	14699. 42.7	-122391. 9.6	-650. 6.7	0. -100.0	46124. -6.1
80	155189. 0.0	18220. 15.0	-129221. -1.0	-690. 6.2	0. ---	50199. 9.3
81	161336. 4.0	18666. 15.1	-125275. 4.2	-739. 5.8	0. ---	53977. 7.1
82	174758. 8.3	19819. 6.6	-134396. 7.3	-780. 6.8	0. ---	59469. 10.1
83	188419. 8.7	25465. 27.9	-142170. 5.8	-835. 7.1	0. ---	69350. 16.6
84	197843. 4.1	26873. 4.8	-147227. 3.6	-888. 5.4	0. ---	76930. 10.9
85	199352. 1.1	29910. 12.2	-148180. 6.6	-925. 5.1	0. ---	84261. 5.6
86	281710. 0.9	29749. -0.7	-144379. -2.2	-975. 5.4	0. ---	85975. 5.8
87	203551. 0.9	33394. 12.4	-145491. 0.4	-1010. 5.4	0. ---	94923. 5.8
88	205493. 1.0	37327. 11.0	-145180. 0.3	-1040. 5.8	0. ---	94241. 5.8
89	207474. 1.0	40389. 10.9	-144178. 0.3	-1155. 6.0	0. ---	101232. 5.7
90	209313. 0.9	45902. 10.4	-144749. 0.2	-1230. 6.5	0. ---	107547. 5.7

FA	EBC17R08		EBC17R09A		EBC17R09B		EBC17R10A		EBC17R10D		EBC17R11	
	IRCL		IRCL		IRCL		IRCL		IRCL		IRCL	
78	-4.		-351.		-1724.		-8880.		-7875.		83997.	
79	-98.	2158.0	-423.	19.4	-1520.	-11.8	-4745.	-46.1	-7934.	0.7	47899.	6.1
80	-70.	0.0	-428.	1.2	-1842.	21.2	-5355.	12.9	-7854.	0.3	72874.	7.4
81	-70.	0.0	-433.	1.2	-1856.	0.0	-5427.	1.3	-7976.	0.3	78504.	7.7
82	-70.	0.0	-471.	9.5	-2421.	30.4	-6475.	19.3	-8002.	0.3	84781.	7.9
83	-70.	0.0	-547.	19.6	-3182.	31.4	-7876.	21.6	-8828.	0.3	94531.	12.1
84	-70.	0.0	-613.	0.2	-3939.	23.0	-9271.	17.7	-8957.	0.3	102031.	7.5
85	-70.	0.0	-613.	0.0	-3937.	0.0	-9337.	0.7	-8996.	0.1	102670.	7.5
86	-70.	0.0	-701.	15.1	-3939.	0.0	-9407.	0.0	-8116.	0.1	117899.	7.5
87	-70.	0.0	-711.	0.0	-3939.	0.0	-9407.	0.0	-8102.	0.1	126782.	7.5
88	-70.	0.0	-711.	0.0	-3939.	0.0	-9571.	0.9	-8184.	0.1	134375.	7.6
89	-70.	0.0	-711.	0.0	-3939.	0.0	-9471.	1.0	-8220.	0.0	143551.	7.5
19	-70.	0.0	-711.	0.0	-3939.	0.0	-7772.	1.0	-8259.	0.5	157435.	7.5

FA	EBC17R12		EBC17R13		EBC17R14		EBC17R15		EBC17R16		EXP1	
	IRCL		IRCL		IRCL		IRCL		IRCL		IRCL	
78	11882.		7568.		42041.		1828.		1547.		4535.	
79	18532.	-18.4	2697.	15.8	45727.	0.8	1247.	22.2	1487.	9.0	8111.	28.8
80	18531.	0.0	9475.	9.0	49744.	0.7	1343.	7.7	1834.	0.7	9390.	15.7
81	18829.	2.7	10314.	8.8	53920.	0.5	1455.	0.3	1995.	0.8	10869.	15.7
82	11330.	4.7	11221.	0.0	58377.	0.3	1583.	0.8	2172.	0.9	12557.	15.6
83	11854.	1.4	12212.	0.0	63187.	0.2	1739.	7.2	5987.	175.7	14514.	15.6
84	12491.	5.1	13232.	0.1	69282.	0.1	1854.	7.2	4192.	3.4	16732.	15.3
85	13221.	5.8	14339.	0.4	73760.	0.0	1977.	7.7	6413.	3.6	19288.	15.3
86	14855.	4.3	15522.	0.3	79509.	7.9	2157.	0.0	6657.	3.0	22231.	15.3
87	15810.	4.8	16793.	0.2	85726.	7.8	2335.	4.3	4924.	1.9	25622.	15.3
88	16897.	7.2	18157.	0.1	92348.	7.0	2531.	0.5	7220.	4.3	29473.	15.0
89	17254.	7.2	19593.	7.9	99493.	7.7	2741.	4.8	7527.	4.2	33949.	15.0
19	18512.	7.3	21097.	7.7	107119.	7.7	2897.	7.1	7860.	4.4	39014.	15.0

FA	EXP231		GAP1		GAP231		ENP1		GAP234		BIP231	
	IRCL		IRCL		IRCL		IRCL		IRCL		IRCL	
78	1619.		21789.		9392.		24882.		8704.		155.	
79	1824.	12.7	29335.	31.4	10815.	6.4	28224.	31.8	9411.	4.1	165.	7.5
80	1940.	6.4	34843.	10.8	14569.	6.5	33223.	10.8	10035.	6.2	174.	4.7
81	2643.	6.3	41281.	18.3	18368.	6.5	37443.	10.3	10854.	6.3	189.	7.9
82	2491.	6.2	48423.	10.4	12119.	6.4	46775.	10.0	11341.	6.3	203.	0.0
83	2324.	6.2	57329.	17.9	12933.	6.7	55139.	17.9	12023.	6.5	217.	6.9
84	2469.	6.1	67849.	17.0	13759.	6.3	64495.	17.4	12889.	6.1	231.	6.2
85	2417.	6.0	78119.	14.5	14523.	6.3	75141.	14.5	13595.	6.1	245.	6.3
86	2273.	6.0	88976.	11.3	15554.	6.1	87419.	14.3	14135.	6.2	261.	6.3
87	2937.	5.9	105655.	11.3	16561.	6.5	101623.	14.3	15339.	6.3	278.	6.4
88	3189.	5.9	122775.	11.2	17443.	6.5	110807.	14.2	16314.	6.4	294.	6.5
89	3290.	5.8	141880.	15.5	18734.	6.2	134391.	15.5	17298.	6.0	313.	6.0
19	3480.	5.8	163335.	15.2	19877.	6.2	157894.	15.2	18344.	6.0	332.	6.0

FA	IAP1		IAP231		IIF1		IIF231		M18		M1731	
	IRCL		IRCL		IRCL		IRCL		IRCL		IRCL	
78	4035.		2310.		4122.		2272.		18651.		7839.	
79	5571.	39.1	2759.	20.7	5883.	31.2	2499.	10.0	21574.	15.7	8282.	5.7
80	4824.	22.5	3495.	10.4	7141.	23.1	2749.	10.0	24546.	13.9	8783.	6.0
81	8310.	22.2	3412.	10.2	8797.	22.0	3417.	9.8	27489.	12.7	9348.	6.0
82	10180.	22.1	3752.	10.0	10770.	22.5	3311.	9.7	31603.	12.0	9870.	6.0
83	12421.	22.0	4121.	9.9	13185.	22.3	3432.	9.7	34559.	11.5	10479.	6.1
84	14719.	19.1	4481.	9.0	15789.	19.7	3441.	0.6	38191.	11.1	11127.	6.2
85	17410.	19.0	4881.	0.0	18827.	19.3	4281.	0.6	42329.	10.2	11784.	5.9
86	20340.	18.9	5317.	0.7	22425.	19.1	4150.	0.5	46477.	9.8	12185.	5.9
87	24189.	18.8	5741.	0.4	26687.	19.0	5141.	0.5	50192.	9.5	13235.	6.0
88	28580.	18.8	6255.	0.3	31741.	19.0	5477.	0.5	54652.	9.3	14142.	6.1
89	34344.	18.2	6759.	7.9	37402.	18.7	5880.	7.7	60749.	9.2	14912.	6.2
19	39884.	16.1	7276.	7.0	43133.	16.4	6354.	7.7	65815.	8.6	15791.	5.9

FA	EDC15R07	EDC15R08	EDC15R09A	EDC15R09D	EDC15R10A	EDC15R10D
	IRCL	IRCL	IRCL	IRCL	IRCL	IRCL
78	-3289.	-4.	-354.	-1721.	-8809.	-7875.
79	-3881.	2150.0	-423.	-1520.	-4745.	-7334.
80	-4318.	0.0	-428.	-1842.	-5355.	-7954.
81	-4789.	0.0	-433.	-1854.	-5427.	-7976.
82	-5199.	0.0	-474.	-2421.	-6475.	-8992.
83	-5598.	0.0	-547.	-3182.	-7876.	-8929.
84	-7514.	0.0	-413.	-3939.	-9271.	-8957.
85	-7977.	0.0	-413.	-3939.	-9337.	-8926.
86	-8165.	0.0	-704.	-3939.	-9497.	-8114.
87	-8985.	0.0	-746.	-3939.	-9459.	-8147.
88	-9543.	0.0	-766.	-3939.	-9578.	-8184.
89	-10125.	0.0	-766.	-3939.	-1071.	-8220.
90	-10735.	0.0	-766.	-3939.	-9772.	-8259.

FA	EDC15R11	EDC15R12	EDC15R13	EDC15R14	EDC15R15	EDC15R16
	IRCL	IRCL	IRCL	IRCL	IRCL	IRCL
78	24585.	5591.	7472.	8873.	1020.	1547.
79	27412.	6241.	8661.	9773.	1242.	1697.
80	30343.	6917.	9439.	10810.	1313.	1834.
81	33426.	7719.	10278.	11899.	1455.	1955.
82	36800.	8620.	11185.	13019.	1589.	2122.
83	40326.	9793.	12174.	14239.	1739.	2297.
84	44144.	10701.	13184.	15581.	1854.	2492.
85	51222.	11483.	14392.	16927.	1997.	2613.
86	55239.	12739.	15186.	18212.	2157.	2659.
87	59545.	13984.	16757.	19462.	2335.	2924.
88	64201.	15140.	18121.	21187.	2533.	2729.
89	69331.	16419.	19547.	22795.	2761.	2927.
90	74166.	17779.	21041.	24479.	2897.	2850.

FA	EDC16R01	EDC16R05	EDC16R11	EDC16R12	EDC16R14	EDC16R01
	IRCL	IRCL	IRCL	IRCL	IRCL	IRCL
78	39492.	39492.	39492.	4288.	33148.	192874.
79	49278.	49278.	49278.	4288.	35954.	195341.
80	42551.	42551.	42551.	3620.	38974.	197652.
81	45978.	45978.	45978.	3921.	42021.	204414.
82	47894.	47894.	47894.	2582.	43357.	222651.
83	51027.	51027.	51027.	2043.	48728.	237446.
84	54565.	54565.	54565.	1719.	52758.	252148.
85	58419.	58419.	58419.	1539.	56973.	254430.
86	62650.	62650.	62650.	1317.	61297.	264359.
87	67217.	67217.	67217.	1124.	64897.	270768.
88	72174.	72174.	72174.	957.	71141.	277647.
89	77589.	77589.	77589.	844.	74899.	285954.
90	83419.	83419.	83419.	743.	82649.	292762.

FA	EDC17R02	EDC17R03	EDC17R14	EDC17R05	EDC17R04	EDC17R07
	IRCL	IRCL	IRCL	IRCL	IRCL	IRCL
78	9803.	-111629.	-489.	-528.	88421.	-3269.
79	14899.	-122391.	-659.	0.	84492.	-3581.
80	16226.	-129221.	-498.	0.	92949.	-4398.
81	18166.	-125275.	-730.	0.	99975.	-4769.
82	19819.	-130394.	-789.	0.	107364.	-5199.
83	25445.	-142171.	-835.	0.	120385.	-5489.
84	24673.	-147227.	-883.	0.	131515.	-7314.
85	29916.	-148180.	-925.	0.	139712.	-7977.
86	29719.	-144979.	-975.	0.	148425.	-8445.
87	33394.	-145494.	-1030.	0.	158140.	-8935.
88	37327.	-145988.	-1078.	0.	168416.	-9543.
89	41309.	-144478.	-1155.	0.	179312.	-10125.
90	45702.	-144749.	-1239.	0.	190786.	-10735.

FA	PCOB		PCPB		PECPB		PEPPB		PEKPB		PIKPB	
	IRCL		IRCL		IRCL		IRCL		IRCL		IRCL	
78	219.		215.		289.		232.		235.		174.	
79	253.	15.5	245.	14.4	445.	58.7	293.	26.3	297.	27.4	199.	14.4
80	284.	12.3	275.	11.8	484.	8.8	327.	11.5	334.	11.8	220.	19.8
81	317.	11.7	304.	11.3	526.	8.8	362.	11.8	372.	11.3	244.	10.9
82	353.	11.3	340.	10.9	573.	8.8	401.	10.7	412.	11.0	271.	11.8
83	392.	11.0	376.	10.7	624.	8.9	443.	10.5	457.	10.7	301.	11.1
84	432.	10.3	414.	10.0	678.	8.7	489.	10.0	508.	10.2	330.	9.3
85	474.	9.7	453.	9.5	737.	8.7	534.	9.6	553.	9.8	360.	9.4
86	519.	9.5	495.	9.3	802.	8.8	584.	9.3	606.	9.4	394.	9.4
87	567.	9.3	549.	9.1	872.	8.8	639.	9.2	662.	9.4	432.	9.5
88	620.	9.2	599.	9.0	948.	8.7	701.	9.1	724.	9.3	473.	9.5
89	673.	8.6	637.	8.4	1031.	8.7	757.	8.8	789.	8.9	519.	7.7
90	729.	8.2	699.	8.1	1121.	8.8	821.	8.5	856.	8.6	568.	7.7

FA	PEKPB		TBA		WF1731	
	IRCL		IRCL		IRCL	
78	195.		3581680.		222.	
79	232.	11.4	3525814.	17.5	261.	17.5
80	261.	12.2	4185841.	11.4	294.	12.4
81	292.	11.9	4741257.	15.5	330.	12.0
82	324.	11.7	5437802.	14.7	368.	11.4
83	363.	11.5	6199165.	14.0	419.	11.1
84	409.	10.2	7020378.	13.2	453.	11.1
85	439.	9.9	7984878.	12.6	497.	9.9
86	482.	9.7	8958709.	12.0	544.	9.7
87	529.	9.7	9888829.	11.6	599.	9.5
88	589.	9.6	10933484.	11.2	654.	9.4
89	628.	8.3	12158591.	10.7	719.	8.4
90	679.	8.1	13411598.	10.3	767.	8.3

(2) 外生変数

FA	CGI	EB01R02	EB01R03	EB01R05	EB01R08
	ZREL	ZREL	ZREL	ZREL	ZREL
70	2331.50000	0.00000	-30.00000	-12.00000	0.00000
71	3269.10000 49.0	0.00000 ---	-30.00000 0.0	0.00000 -100.0	0.00000 ---
80	4047.40000 21.0	0.00000 ---	-30.00000 0.0	0.00000 ---	0.00000 ---
81	5010.00000 21.0	0.00000 ---	-30.00000 0.0	0.00000 ---	0.00000 ---
82	6223.41140 21.0	0.00000 ---	-30.00000 0.0	0.00000 ---	0.00000 ---
83	7717.03113 21.0	0.00000 ---	-30.00000 0.0	0.00000 ---	0.00000 ---
84	9269.43618 20.0	0.00000 ---	-30.00000 0.0	0.00000 ---	0.00000 ---
85	11112.52337 20.0	0.00000 ---	-30.00000 0.0	0.00000 ---	0.00000 ---
86	13335.02007 20.0	0.00000 ---	-30.00000 0.0	0.00000 ---	0.00000 ---
87	16102.03347 20.0	0.00000 ---	-30.00000 0.0	0.00000 ---	0.00000 ---
88	19202.44942 20.0	0.00000 ---	-30.00000 0.0	0.00000 ---	0.00000 ---
89	22416.05530 17.0	0.00000 ---	-30.00000 0.0	0.00000 ---	0.00000 ---
90	26216.72970 17.0	0.00000 ---	-30.00000 0.0	0.00000 ---	0.00000 ---

FA	EB01R10A	EB01R10B	EB01R12	EB01R13	EB01R14
	ZREL	ZREL	ZREL	ZREL	ZREL
70	-0.00000	0.00000	50.00000	20.00000	0.00000
71	-0.00000 0.0	0.00000 ---	150.00000 200.0	53.00000 89.3	0.00000 ---
80	-0.00000 0.0	0.00000 ---	227.00000 51.3	41.00000 -22.6	0.00000 ---
81	-0.00000 0.0	0.00000 ---	207.00000 26.4	11.00000 -24.4	0.00000 ---
82	-0.00000 0.0	0.00000 ---	197.00000 11.8	27.00000 -29.0	0.00000 ---
83	-0.00000 0.0	0.00000 ---	153.00000 11.3	22.00000 0.0	0.00000 ---
84	-0.00000 0.0	0.00000 ---	153.00000 0.0	4.00000 -81.8	0.00000 ---
85	-0.00000 0.0	0.00000 ---	153.00000 0.0	4.00000 0.0	0.00000 ---
86	-0.00000 0.0	0.00000 ---	153.00000 0.0	4.00000 0.0	0.00000 ---
87	-0.00000 0.0	0.00000 ---	153.00000 0.0	4.00000 0.0	0.00000 ---
88	-0.00000 0.0	0.00000 ---	153.00000 0.0	4.00000 0.0	0.00000 ---
89	-0.00000 0.0	0.00000 ---	153.00000 0.0	4.00000 0.0	0.00000 ---
90	-0.00000 0.0	0.00000 ---	153.00000 0.0	4.00000 0.0	0.00000 ---

FA	EB02R01	EB02R02	EB02R05	EB02R07A
	ZREL	ZREL	ZREL	ZREL
70	27.00000	119570.00000	6224.00000	-552.00000
71	30.00000 11.1	123200.00000 3.0	6224.00000 0.0	0.00000 -100.0
80	30.00000 0.0	118400.00000 -3.7	6224.00000 0.0	0.00000 ---
81	30.00000 0.0	124000.00000 1.6	6224.00000 0.0	0.00000 ---
82	30.00000 0.0	130000.00000 4.0	6224.00000 0.0	0.00000 ---
83	30.00000 0.0	131000.00000 1.4	12440.00000 100.0	0.00000 ---
84	30.00000 0.0	133000.00000 0.9	12440.00000 0.0	0.00000 ---
85	30.00000 0.0	134200.00000 0.9	12440.00000 0.0	0.00000 ---
86	30.00000 0.0	135000.00000 0.6	12440.00000 0.0	0.00000 ---
87	30.00000 0.0	135000.00000 0.6	12440.00000 0.0	0.00000 ---
88	30.00000 0.0	136100.00000 0.6	12440.00000 0.0	0.00000 ---
89	30.00000 0.0	137400.00000 0.6	12440.00000 0.0	0.00000 ---
90	30.00000 0.0	138000.00000 0.4	12440.00000 0.0	0.00000 ---

FA	EB02R10A	EB02R10B	EB04R03	EB04R04	EB04R05
	ZREL	ZREL	ZREL	ZREL	ZREL
70	-252.00000	0.00000	0.00000	-1.00000	-122.00000
71	-252.00000 0.0	0.00000 ---	0.00000 ---	0.00000 -100.0	0.00000 -100.0
80	-252.00000 0.0	0.00000 ---	0.00000 ---	0.00000 ---	0.00000 ---
81	-252.00000 0.0	0.00000 ---	0.00000 ---	0.00000 ---	0.00000 ---
82	-252.00000 0.0	0.00000 ---	0.00000 ---	0.00000 ---	0.00000 ---
83	-252.00000 0.0	0.00000 ---	0.00000 ---	0.00000 ---	0.00000 ---
84	-252.00000 0.0	0.00000 ---	0.00000 ---	0.00000 ---	0.00000 ---
85	-252.00000 0.0	0.00000 ---	0.00000 ---	0.00000 ---	0.00000 ---
86	-252.00000 0.0	0.00000 ---	0.00000 ---	0.00000 ---	0.00000 ---
87	-252.00000 0.0	0.00000 ---	0.00000 ---	0.00000 ---	0.00000 ---
88	-252.00000 0.0	0.00000 ---	0.00000 ---	0.00000 ---	0.00000 ---
89	-252.00000 0.0	0.00000 ---	0.00000 ---	0.00000 ---	0.00000 ---
90	-252.00000 0.0	0.00000 ---	0.00000 ---	0.00000 ---	0.00000 ---



FA	EBC04R10A	EBC04R10B	EBC04R12	EBC04R15	EBC04R04
	IRCL	IRCL	IRCL	IRCL	IRCL
78	0.00000	0.00000	0.00000	285.00000	-203.00000
79	0.00000	0.00000	0.00000	300.00000	-235.00000
80	0.00000	0.00000	0.00000	300.00000	-270.00000
81	0.00000	0.00000	0.00000	300.00000	-310.00000
82	0.00000	0.00000	0.00000	300.00000	-340.00000
83	0.00000	0.00000	0.00000	300.00000	-410.00000
84	0.00000	0.00000	0.00000	300.00000	-455.00000
85	0.00000	0.00000	0.00000	350.00000	-500.00000
86	0.00000	0.00000	0.00000	350.00000	-550.00000
87	0.00000	0.00000	0.00000	300.00000	-605.00000
88	0.00000	0.00000	0.00000	300.00000	-655.00000
89	0.00000	0.00000	0.00000	300.00000	-730.00000
90	0.00000	0.00000	0.00000	330.00000	-805.00000

FA	EBC05R05	EBC05R10A	EBC05R10B	EBC05R05	EBC05R10A
	IRCL	IRCL	IRCL	IRCL	IRCL
78	10.00000	0.00000	0.00000	-85.00000	0.00000
79	0.00000	0.00000	0.00000	0.00000	0.00000
80	0.00000	0.00000	0.00000	0.00000	0.00000
81	0.00000	0.00000	0.00000	0.00000	0.00000
82	0.00000	0.00000	0.00000	0.00000	0.00000
83	0.00000	0.00000	0.00000	0.00000	0.00000
84	0.00000	0.00000	0.00000	0.00000	0.00000
85	0.00000	0.00000	0.00000	0.00000	0.00000
86	0.00000	0.00000	0.00000	0.00000	0.00000
87	0.00000	0.00000	0.00000	0.00000	0.00000
88	0.00000	0.00000	0.00000	0.00000	0.00000
89	0.00000	0.00000	0.00000	0.00000	0.00000
90	0.00000	0.00000	0.00000	0.00000	0.00000

FA	EBC06R10B	EBC06R12	EBC07AR01	EBC07AR05	EBC07AR07
	IRCL	IRCL	IRCL	IRCL	IRCL
78	0.00000	0.00000	-32.00000	377.00000	-2103.00000
79	0.00000	0.00000	-15.00000	0.00000	-2347.10000
80	0.00000	0.00000	-15.00000	0.00000	-2700.01000
81	0.00000	0.00000	-15.00000	0.00000	-2847.01145
82	0.00000	0.00000	-15.00000	0.00000	-3033.72213
83	0.00000	0.00000	-15.00000	0.00000	-3215.75486
84	0.00000	0.00000	-15.00000	0.00000	-3400.70143
85	0.00000	0.00000	-15.00000	0.00000	-3613.22351
86	0.00000	0.00000	-15.00000	0.00000	-3839.01692
87	0.00000	0.00000	-15.00000	0.00000	-4057.11794
88	0.00000	0.00000	-15.00000	0.00000	-4303.10781
89	0.00000	0.00000	-15.00000	0.00000	-4541.61114
90	0.00000	0.00000	-15.00000	0.00000	-4835.30012

FA	EBC07AR08	EBC07AR10A	EBC07AR10B	EBC07AR14	EBC07BR04
	IRCL	IRCL	IRCL	IRCL	IRCL
78	-7.00000	0.00000	0.00000	0.00000	-54.00000
79	-25.00000	0.00000	0.00000	0.00000	-40.00000
80	-25.00000	0.00000	0.00000	0.00000	-45.00000
81	-25.00000	0.00000	0.00000	0.00000	-65.00000
82	-25.00000	0.00000	0.00000	0.00000	-65.00000
83	-25.00000	0.00000	0.00000	0.00000	-70.00000
84	-25.00000	0.00000	0.00000	0.00000	-70.00000
85	-25.00000	0.00000	0.00000	0.00000	-70.00000
86	-25.00000	0.00000	0.00000	0.00000	-70.00000
87	-25.00000	0.00000	0.00000	0.00000	-70.00000
88	-25.00000	0.00000	0.00000	0.00000	-70.00000
89	-25.00000	0.00000	0.00000	0.00000	-70.00000
90	-25.00000	0.00000	0.00000	0.00000	-70.00000

FA	ERC07R05	ERC07R07	ERC07R09	ERC07R10A	ERC07R10F
	IRCL	IRCL	IRCL	IRCL	IRCL
78	30.00000	-17.00000	-10.00000	0.00000	0.00000
79	0.00000	-17.00000	-20.00000	0.00000	0.00000
80	0.00000	-17.00000	-20.00000	0.00000	0.00000
81	0.00000	-17.00000	-20.00000	0.00000	0.00000
82	0.00000	-17.00000	-20.00000	0.00000	0.00000
83	0.00000	-17.00000	-20.00000	0.00000	0.00000
84	0.00000	-17.00000	-20.00000	0.00000	0.00000
85	0.00000	-17.00000	-20.00000	0.00000	0.00000
86	0.00000	-17.00000	-20.00000	0.00000	0.00000
87	0.00000	-17.00000	-20.00000	0.00000	0.00000
88	0.00000	-17.00000	-20.00000	0.00000	0.00000
89	0.00000	-17.00000	-20.00000	0.00000	0.00000
90	0.00000	-17.00000	-20.00000	0.00000	0.00000

FA	ERC07R13	ERC07R14	ERC07R16A	ERC07R18B	ERC08R22
	IRCL	IRCL	IRCL	IRCL	IRCL
78	147.00000	0.00000	0.00000	0.00000	0.00000
79	150.00000	0.00000	0.00000	0.00000	0.00000
80	150.00000	0.00000	0.00000	0.00000	0.00000
81	150.00000	0.00000	0.00000	0.00000	0.00000
82	150.00000	0.00000	0.00000	0.00000	0.00000
83	150.00000	0.00000	0.00000	0.00000	0.00000
84	150.00000	0.00000	0.00000	0.00000	0.00000
85	150.00000	0.00000	0.00000	0.00000	0.00000
86	150.00000	0.00000	0.00000	0.00000	0.00000
87	150.00000	0.00000	0.00000	0.00000	0.00000
88	150.00000	0.00000	0.00000	0.00000	0.00000
89	150.00000	0.00000	0.00000	0.00000	0.00000
90	150.00000	0.00000	0.00000	0.00000	0.00000

FA	ERC08R01	ERC08R05	ERC08R07	ERC08R09	ERC08R10A
	IRCL	IRCL	IRCL	IRCL	IRCL
78	-337.00000	-191.00000	-130.00000	0.00000	0.00000
79	-340.00000	0.00000	-200.00000	0.00000	0.00000
80	-340.00000	0.00000	-275.00000	0.00000	0.00000
81	-340.00000	0.00000	-650.00000	0.00000	0.00000
82	-340.00000	0.00000	-735.00000	0.00000	0.00000
83	-340.00000	0.00000	-850.00000	0.00000	0.00000
84	-340.00000	0.00000	-1000.00000	0.00000	0.00000
85	-340.00000	0.00000	-1000.00000	0.00000	0.00000
86	-340.00000	0.00000	-1000.00000	0.00000	0.00000
87	-340.00000	0.00000	-1000.00000	0.00000	0.00000
88	-340.00000	0.00000	-1000.00000	0.00000	0.00000
89	-340.00000	0.00000	-1000.00000	0.00000	0.00000
90	-340.00000	0.00000	-1000.00000	0.00000	0.00000

FA	ERC08R10B	ERC08R13	ERC08R14	ERC08R15	ERC07R02
	IRCL	IRCL	IRCL	IRCL	IRCL
78	0.00000	436.00000	0.00000	50.00000	0.00000
79	0.00000	450.00000	0.00000	57.24300	0.00000
80	0.00000	450.00000	0.00000	69.47110	0.00000
81	0.00000	450.00000	0.00000	81.71100	0.00000
82	0.00000	450.00000	0.00000	94.00000	0.00000
83	0.00000	450.00000	0.00000	106.30000	0.00000
84	0.00000	450.00000	0.00000	118.60000	0.00000
85	0.00000	450.00000	0.00000	130.90000	0.00000
86	0.00000	450.00000	0.00000	143.20000	0.00000
87	0.00000	450.00000	0.00000	155.50000	0.00000
88	0.00000	450.00000	0.00000	167.80000	0.00000
89	0.00000	450.00000	0.00000	180.10000	0.00000
90	0.00000	450.00000	0.00000	192.40000	0.00000

FA	EC09R05	EC09R09	EC09R10	EC09R10B	EC09R12
	IRCL	IRCL	IRCL	IRCL	IRCL
78	40.00000	1930.00000	0.00000	0.00000	0.00000
79	0.00000 -100.0	2000.00000 3.2	0.00000	0.00000	0.00000
80	0.00000	2000.00000 0.0	0.00000	0.00000	0.00000
81	0.00000	2000.00000 0.0	0.00000	0.00000	0.00000
82	0.00000	2000.00000 0.0	0.00000	0.00000	0.00000
83	0.00000	2000.00000 0.0	0.00000	0.00000	0.00000
84	0.00000	2000.00000 0.0	0.00000	0.00000	0.00000
85	0.00000	2000.00000 0.0	0.00000	0.00000	0.00000
86	0.00000	2000.00000 0.0	0.00000	0.00000	0.00000
87	0.00000	2000.00000 0.0	0.00000	0.00000	0.00000
88	0.00000	2000.00000 0.0	0.00000	0.00000	0.00000
89	0.00000	2000.00000 0.0	0.00000	0.00000	0.00000
90	0.00000	2000.00000 0.0	0.00000	0.00000	0.00000

FA	EC10R16	EC10R02	EC10R05	EC10R10B	EC10R10A
	IRCL	IRCL	IRCL	IRCL	IRCL
78	0.00000	4.00000	0.00000	474.00000	0.00000
79	0.00000	4.00000 0.0	0.00000	504.00000 -25.0	0.00000
80	0.00000	4.00000 0.0	0.00000	450.00000 30.0	0.00000
81	0.00000	4.00000 0.0	0.00000	750.00000 15.4	0.00000
82	0.00000	4.00000 0.0	0.00000	750.00000 0.0	0.00000
83	3620.00000	4.00000 0.0	0.00000	750.00000 0.0	0.00000
84	3620.00000 0.0	4.00000 0.0	0.00000	750.00000 0.0	0.00000
85	3620.00000 0.0	4.00000 0.0	0.00000	750.00000 0.0	0.00000
86	3620.00000 0.0	4.00000 0.0	0.00000	750.00000 0.0	0.00000
87	3620.00000 0.0	4.00000 0.0	0.00000	750.00000 0.0	0.00000
88	3620.00000 0.0	4.00000 0.0	0.00000	750.00000 0.0	0.00000
89	3620.00000 0.0	4.00000 0.0	0.00000	750.00000 0.0	0.00000
90	3620.00000 0.0	4.00000 0.0	0.00000	750.00000 0.0	0.00000

FA	EC10R10B	EC10R02	EC10R05	EC10R10A	EC10R10B
	IRCL	IRCL	IRCL	IRCL	IRCL
78	0.00000	77.00000	-7.00000	0.00000	0.00000
79	0.00000	77.00000 0.0	0.00000 -100.0	0.00000	0.00000
80	0.00000	77.00000 0.0	0.00000	0.00000	0.00000
81	0.00000	77.00000 0.0	0.00000	0.00000	0.00000
82	0.00000	77.00000 0.0	0.00000	0.00000	0.00000
83	0.00000	77.00000 0.0	0.00000	0.00000	0.00000
84	0.00000	77.00000 0.0	0.00000	0.00000	0.00000
85	0.00000	77.00000 0.0	0.00000	0.00000	0.00000
86	0.00000	77.00000 0.0	0.00000	0.00000	0.00000
87	0.00000	77.00000 0.0	0.00000	0.00000	0.00000
88	0.00000	77.00000 0.0	0.00000	0.00000	0.00000
89	0.00000	77.00000 0.0	0.00000	0.00000	0.00000
90	0.00000	77.00000 0.0	0.00000	0.00000	0.00000

FA	EC11R02B	EC11R10B	EC11R02B
	IRCL	IRCL	IRCL
78	-11000.00000	-7714.00000	7553.00000
79	-15200.00000 27.9	-7714.00000 0.0	11100.00000 40.0
80	-18017.00000 20.2	-7714.00000 0.0	13725.00000 24.0
81	-18541.00000 0.0	-7714.00000 0.0	13755.00000 0.2
82	-24200.00000 39.4	-7714.00000 0.0	15025.00000 24.4
83	-31022.00000 31.5	-7714.00000 0.0	25070.00000 36.0
84	-37307.00000 23.0	-7714.00000 0.0	32700.00000 26.3
85	-37307.00000 0.0	-7714.00000 0.0	32700.00000 0.0
86	-37307.00000 0.0	-7714.00000 0.0	32700.00000 0.0
87	-37307.00000 0.0	-7714.00000 0.0	32700.00000 0.0
88	-37307.00000 0.0	-7714.00000 0.0	32700.00000 0.0
89	-37307.00000 0.0	-7714.00000 0.0	32700.00000 0.0
90	-37307.00000 0.0	-7714.00000 0.0	32700.00000 0.0

FA	EDC11811A	EDC11811B	EDC11811C	EDC11811D	EDC11811E	EDC11811F
	IRCL	IRCL	IRCL	IRCL	IRCL	IRCL
78	0.00000	-34.00000	0.00000	-7.00000	0.00000	---
79	0.00000	-34.00000	0.0	-7.00000	0.0	0.00000
80	0.00000	-34.00000	0.0	-7.00000	0.0	0.00000
81	0.00000	-34.00000	0.0	-7.00000	0.0	0.00000
82	0.00000	-34.00000	0.0	-7.00000	0.0	0.00000
83	0.00000	-34.00000	0.0	-7.00000	0.0	0.00000
84	0.00000	-34.00000	0.0	-7.00000	0.0	0.00000
85	0.00000	-34.00000	0.0	-7.00000	0.0	0.00000
86	0.00000	-34.00000	0.0	-7.00000	0.0	0.00000
87	0.00000	-34.00000	0.0	-7.00000	0.0	0.00000
88	0.00000	-34.00000	0.0	-7.00000	0.0	0.00000
89	0.00000	-34.00000	0.0	-7.00000	0.0	0.00000
90	0.00000	-34.00000	0.0	-7.00000	0.0	0.00000

FA	EDC12807	EDC13807	EDC14813	EDC16816	EDC18810B
	IRCL	IRCL	IRCL	IRCL	IRCL
78	0.00000	-340.00000	0.00000	0.00000	0.00000
79	0.00000	-340.00000	14.5	0.00000	0.00000
80	0.00000	-549.40000	27.9	0.00000	0.00000
81	0.00000	-523.40000	2.8	0.00000	0.00000
82	0.00000	-520.00000	1.0	0.00000	0.00000
83	0.00000	-555.10000	5.4	0.00000	0.00000
84	0.00000	-1099.00000	12.0	0.00000	0.00000
85	0.00000	-2164.00000	0.5	0.00000	0.00000
86	0.00000	-1139.00000	0.5	0.00000	0.00000
87	0.00000	-1114.00000	0.5	0.00000	0.00000
88	0.00000	-1119.00000	0.4	0.00000	0.00000
89	0.00000	-1125.00000	0.5	0.00000	0.00000
90	0.00000	-1139.00000	0.4	0.00000	0.00000

FA	ELC16813	ELC65815	ELC97815	ELC97815	ELC10812
	IRCL	IRCL	IRCL	IRCL	IRCL
78	34.00000	0.00000	2.62417	4.98195	3.41998
79	34.00000	0.0	1.00000	1.00000	1.50000
80	34.00000	0.0	1.00000	1.00000	1.50000
81	34.00000	0.0	1.00000	1.00000	1.50000
82	34.00000	0.0	1.00000	1.00000	1.50000
83	34.00000	0.0	1.00000	1.00000	1.50000
84	34.00000	0.0	1.00000	1.00000	1.50000
85	34.00000	0.0	1.00000	1.00000	1.50000
86	34.00000	0.0	1.00000	1.00000	1.50000
87	34.00000	0.0	1.00000	1.00000	1.50000
88	34.00000	0.0	1.00000	1.00000	1.50000
89	34.00000	0.0	1.00000	1.00000	1.50000
90	34.00000	0.0	1.00000	1.00000	1.50000

FA	ELC10816	ELC11812	ELC11812	ELC11812
	IRCL	IRCL	IRCL	IRCL
78	11.33524	7.45053	0.00000	---
79	1.00000	1.50000	1.00000	---
80	1.00000	1.50000	1.00000	0.0
81	1.00000	1.50000	1.00000	0.0
82	1.00000	1.50000	1.00000	0.0
83	1.00000	1.50000	1.00000	0.0
84	1.00000	1.50000	1.00000	0.0
85	1.00000	1.50000	1.00000	0.0
86	1.00000	1.50000	1.00000	0.0
87	1.00000	1.50000	1.00000	0.0
88	1.00000	1.50000	1.00000	0.0
89	1.00000	1.50000	1.00000	0.0
90	1.00000	1.50000	1.00000	0.0

FA	ELC11A16	ELC11C11A	ELC11A15	ELC16A12	FA08
	IRCL	IRCL	IRCL	IRCL	IRCL
78	0.34435	2.77895	4.04510	-6.18585	25.00000
79	1.50000 -82.0	1.00000 -64.0	1.00000 -75.3	-1.50000 -75.0	27.00000 8.0
80	1.50000 0.0	1.00000 0.0	1.00000 0.0	-1.50000 0.0	29.16000 0.0
81	1.50000 0.0	1.00000 0.0	1.00000 0.0	-1.50000 0.0	31.49289 0.0
82	1.50000 0.0	1.00000 0.0	1.00000 0.0	-1.50000 0.0	34.01222 0.0
83	1.50000 0.0	1.00000 0.0	1.00000 0.0	-1.50000 0.0	34.73320 0.0
84	1.50000 0.0	1.00000 0.0	1.00000 0.0	-1.50000 0.0	39.47188 0.0
85	1.50000 0.0	1.00000 0.0	1.00000 0.0	-1.50000 0.0	42.84561 0.0
86	1.50000 0.0	1.00000 0.0	1.00000 0.0	-1.50000 0.0	45.27326 0.0
87	1.50000 0.0	1.00000 0.0	1.00000 0.0	-1.50000 0.0	49.97512 0.0
88	1.50000 0.0	1.00000 0.0	1.00000 0.0	-1.50000 0.0	53.97312 0.0
89	1.50000 0.0	1.00000 0.0	1.00000 0.0	-1.50000 0.0	58.29077 0.0
90	1.50000 0.0	1.00000 0.0	1.00000 0.0	-1.50000 0.0	62.95425 0.0

FA	FA5K6P231	PC0018A	PET0078	PK008	PC08
	IRCL	IRCL	IRCL	IRCL	IRCL
78	187.41550	12.70000	59440.00000	18.00000	141.57100
79	196.87020 5.0	25.41000 100.0	614000.00000 3.2	19.44000 0.0	141.69374 2.2
80	206.71970 5.0	27.91000 10.0	593000.00000 -3.7	20.93520 0.0	147.07709 2.2
81	217.04940 5.0	30.73100 10.0	420000.00000 4.6	22.47402 0.0	151.13029 2.7
82	227.98195 5.0	33.03740 10.0	450000.00000 4.0	24.40880 0.0	154.45516 2.2
83	239.29745 5.0	37.10814 10.0	431000.00000 1.4	26.41731 0.0	157.05317 2.2
84	249.84993 4.0	40.98695 10.0	665000.00000 0.9	28.54376 0.0	161.32510 2.2
85	258.02369 4.0	44.99265 10.0	671000.00000 0.9	30.84084 0.0	164.07511 2.2
86	269.17464 4.0	49.49241 10.0	675000.00000 0.6	31.31674 0.0	168.50237 2.2
87	279.94370 4.0	54.44214 10.0	679000.00000 0.6	35.90208 0.0	172.20142 2.2
88	288.34201 3.0	59.09107 10.0	693000.00000 0.6	39.04065 0.0	175.99803 2.2
89	296.19227 3.0	65.00106 10.0	687000.00000 0.6	41.94950 0.0	179.84970 2.2
90	305.19204 3.0	72.41916 10.0	690000.00000 0.4	45.32746 0.0	183.02712 2.2

FA	PF0018	PF0258	PF0754	TC04109	TC05009
	IRCL	IRCL	IRCL	IRCL	IRCL
78	76.00000	123.00000	1609.26230	0.11100	0.00000
79	82.00000 0.0	137.76000 12.0	1659.72541 5.0	0.11500 1.0	0.01150 12.1
80	89.42100 0.0	156.29320 12.0	1662.71140 5.0	0.11900 0.0	0.01150 0.0
81	96.57702 0.0	172.00000 12.0	1660.14026 5.0	0.11900 0.0	0.00150 0.0
82	104.30415 0.0	193.51200 12.0	1624.70413 5.0	0.11900 0.0	0.01150 0.0
83	112.61047 0.0	216.74000 12.0	1600.10200 5.0	0.11900 0.0	0.01150 0.0
84	121.01036 0.0	239.44100 10.0	1552.50000 5.0	0.11900 0.0	0.01150 0.0
85	131.39319 0.0	262.20900 10.0	1420.13340 5.0	0.11900 0.0	0.01150 0.0
86	141.90465 0.0	289.51024 10.0	1491.14207 5.0	0.11900 0.0	0.01150 0.0
87	153.25702 0.0	317.37007 10.0	1565.69700 5.0	0.11900 0.0	0.01150 0.0
88	165.51250 0.0	349.10700 10.0	1643.90193 5.0	0.11900 0.0	0.01150 0.0
89	178.75019 0.0	377.03564 0.0	1726.10163 5.0	0.11900 0.0	0.01150 0.0
90	193.05971 0.0	407.19849 0.0	1812.49000 5.0	0.11900 0.0	0.01150 0.0

FA	TC04109	TC07109	TC07109	TC08109	TC09109
	IRCL	IRCL	IRCL	IRCL	IRCL
78	0.13100	0.13247	0.04000	0.13100	0.03454
79	0.13400 1.3	0.13700 -0.0	0.04500 -6.3	0.13200 -13.1	0.02700 -21.0
80	0.13400 0.0	0.13700 0.0	0.04500 0.0	0.13200 0.0	0.02700 0.0
81	0.13400 0.0	0.13700 0.0	0.04500 0.0	0.13200 0.0	0.02700 0.0
82	0.13400 0.0	0.13700 0.0	0.04500 0.0	0.13200 0.0	0.02700 0.0
83	0.13400 0.0	0.13700 0.0	0.04500 0.0	0.13200 0.0	0.02700 0.0
84	0.13400 0.0	0.13700 0.0	0.04500 0.0	0.13200 0.0	0.02700 0.0
85	0.13400 0.0	0.13700 0.0	0.04500 0.0	0.13200 0.0	0.02700 0.0
86	0.13400 0.0	0.13700 0.0	0.04500 0.0	0.13200 0.0	0.02700 0.0
87	0.13400 0.0	0.13700 0.0	0.04500 0.0	0.13200 0.0	0.02700 0.0
88	0.13400 0.0	0.13700 0.0	0.04500 0.0	0.13200 0.0	0.02700 0.0
89	0.13400 0.0	0.13700 0.0	0.04500 0.0	0.13200 0.0	0.02700 0.0
90	0.13400 0.0	0.13700 0.0	0.04500 0.0	0.13200 0.0	0.02700 0.0

FA	YC14AR57		YC10PR59		ZC14AR10A		ZC14AR08		ZC14AR10	
		IRCL		IRCL		IRCL		IRCL		IRCL
78	0.00100		0.29100		-0.20000		0.25300		0.13700	
79	0.00100	-0.6	0.32000	12.7	-0.15000	-46.5	0.30000	18.4	0.15000	0.0
80	0.00100	0.0	0.32000	0.0	-0.15000	0.0	0.30000	0.0	0.15000	0.0
81	0.00100	0.0	0.32000	0.0	-0.15000	0.0	0.30000	0.0	0.15000	0.0
82	0.00100	0.0	0.32000	0.0	-0.15000	0.0	0.30000	0.0	0.15000	0.0
83	0.00100	0.0	0.32000	0.0	-0.15000	0.0	0.30000	0.0	0.15000	0.0
84	0.00100	0.0	0.32000	0.0	-0.15000	0.0	0.30000	0.0	0.15000	0.0
85	0.00100	0.0	0.32000	0.0	-0.15000	0.0	0.30000	0.0	0.15000	0.0
86	0.00100	0.0	0.32000	0.0	-0.15000	0.0	0.30000	0.0	0.15000	0.0
87	0.00100	0.0	0.32000	0.0	-0.15000	0.0	0.30000	0.0	0.15000	0.0
88	0.00100	0.0	0.32000	0.0	-0.15000	0.0	0.30000	0.0	0.15000	0.0
89	0.00100	0.0	0.32000	0.0	-0.15000	0.0	0.30000	0.0	0.15000	0.0
90	0.00100	0.0	0.32000	0.0	-0.15000	0.0	0.30000	0.0	0.15000	0.0

1. The first part of the document discusses the importance of maintaining accurate records of all transactions. It emphasizes that every entry should be supported by a valid receipt or invoice. This ensures transparency and allows for easy auditing of the accounts.

2. The second section covers the process of reconciling bank statements with the company's internal records. It provides a step-by-step guide on how to identify discrepancies and investigate their causes. Regular reconciliation is crucial for catching errors early and maintaining the integrity of the financial data.

3. The third part of the document addresses the issue of budgeting and cost control. It explains how to set realistic budgets for different departments and projects, and how to monitor actual spending against these budgets. This helps in identifying areas where costs are running high and taking corrective action.

4. The final section discusses the importance of timely reporting and communication. It outlines the frequency and format of financial reports, and stresses the need for clear communication between management and stakeholders. This ensures that everyone is informed about the company's financial health and can make informed decisions.

5. The document also includes a detailed explanation of the accounting cycle, from identifying transactions to closing the books. It provides examples of journal entries for various business transactions, such as sales, purchases, and payroll. This helps in understanding the flow of financial information and how it is recorded in the general ledger.

6. Additionally, it covers the basics of depreciation and amortization, explaining how these methods are used to allocate the cost of long-term assets over their useful lives. This is important for accurately reflecting the value of assets on the balance sheet and for calculating depreciation expense on the income statement.

7. The document also touches upon the importance of internal controls and risk management. It discusses how to design and implement controls to prevent fraud and errors, and how to assess and mitigate financial risks. This is essential for protecting the company's assets and ensuring the reliability of its financial reporting.

8. Finally, the document concludes with a summary of the key points and a call to action for the reader to implement the best practices discussed. It emphasizes that consistent adherence to these principles is key to achieving financial success and long-term sustainability for the organization.

9. The document also includes a section on the importance of staying up-to-date with changes in accounting standards and regulations. It provides resources for finding the latest information and offers advice on how to adapt to these changes. This is particularly important in a rapidly changing business environment where regulations can evolve quickly.

10. Furthermore, it discusses the role of technology in modern accounting. It highlights the benefits of using accounting software for automating routine tasks, improving accuracy, and providing real-time access to financial data. It also mentions the importance of data security and backup procedures when using digital systems.

11. The document also covers the basics of financial ratios and how to use them to analyze the company's performance. It explains the significance of ratios such as the current ratio, debt-to-equity ratio, and profit margin, and provides formulas for calculating them. This helps in identifying trends and areas for improvement.

12. Finally, it includes a section on the importance of ethical behavior in accounting. It discusses the role of accountants as trusted advisors and the need to adhere to a high standard of ethical conduct. This includes being honest, objective, and transparent in all financial reporting and transactions.

13. The document also provides a list of common accounting abbreviations and terms, along with their full names and definitions. This is useful for quick reference and for ensuring consistency in terminology throughout the document.

14. Additionally, it includes a glossary of key financial concepts and a list of recommended reading materials for further study. This helps in expanding the reader's knowledge and understanding of the subject matter.

15. The document also features a section on the importance of continuous learning and professional development in the accounting field. It discusses the benefits of pursuing certifications and staying current with industry trends, and provides resources for finding relevant courses and programs.

16. Finally, the document concludes with a final summary and a call to action for the reader to take the next steps in their accounting journey. It emphasizes that with dedication and a commitment to excellence, anyone can succeed in the field of accounting.









Vertical text on the left margin, possibly bleed-through from the reverse side of the page. The text is extremely faint and illegible.

Main body of the page containing several columns of text. The text is very faint and illegible, appearing as a light gray pattern against the white background. It seems to be a list or a series of entries, but the specific details cannot be discerned.

Vertical text on the right margin, possibly bleed-through from the reverse side of the page. The text is extremely faint and illegible.

(2) 予 測 (1980年, 1983年, 1988年, 1990年)

FAC 80 )	I																				
	ERC01	ERC02	ERC03	ERC04	ERC05	ERC06	ERC07	ERC08	ERC09	ERC10	ERC11	ERC12	ERC13	ERC14	ERC15	ERC16	ERC17	ERC18	ERC19	ERC20	
801	710.	110880.																			
802	0.	4224.	9276.	871.	4134.	3676.	4114.	3658.	125.	0.	0.	0.	0.	0.	0.	0.	0.	0.	0.	0.	
803	-30.	-10982.	-15318.	0.	0.	0.	0.	0.	0.	-1247.	-2767.	-11248.	-411.	-10425.	-13873.						
804			-619.	0.	-270.	0.	-89.	-15.	-45.	-119.											
805	0.	0.	0.	0.	0.	0.	0.	0.	0.	0.	0.	0.	0.	0.	0.	0.	0.	0.	0.	0.	
806	0.	0.	0.	0.	0.	0.	0.	0.	0.	0.	0.	0.	0.	0.	0.	0.	0.	0.	0.	0.	
807	0.	0.	0.	0.	0.	0.	0.	0.	0.	0.	0.	0.	0.	0.	0.	0.	0.	0.	0.	0.	
808	0.	0.	0.	0.	0.	0.	0.	0.	0.	0.	0.	0.	0.	0.	0.	0.	0.	0.	0.	0.	
809	0.	0.	0.	0.	0.	0.	0.	0.	0.	0.	0.	0.	0.	0.	0.	0.	0.	0.	0.	0.	
810	0.	0.	0.	0.	0.	0.	0.	0.	0.	0.	0.	0.	0.	0.	0.	0.	0.	0.	0.	0.	
811	0.	0.	0.	0.	0.	0.	0.	0.	0.	0.	0.	0.	0.	0.	0.	0.	0.	0.	0.	0.	
812	0.	0.	0.	0.	0.	0.	0.	0.	0.	0.	0.	0.	0.	0.	0.	0.	0.	0.	0.	0.	
813	0.	0.	0.	0.	0.	0.	0.	0.	0.	0.	0.	0.	0.	0.	0.	0.	0.	0.	0.	0.	
814	0.	0.	0.	0.	0.	0.	0.	0.	0.	0.	0.	0.	0.	0.	0.	0.	0.	0.	0.	0.	
815	0.	0.	0.	0.	0.	0.	0.	0.	0.	0.	0.	0.	0.	0.	0.	0.	0.	0.	0.	0.	
816	0.	0.	0.	0.	0.	0.	0.	0.	0.	0.	0.	0.	0.	0.	0.	0.	0.	0.	0.	0.	

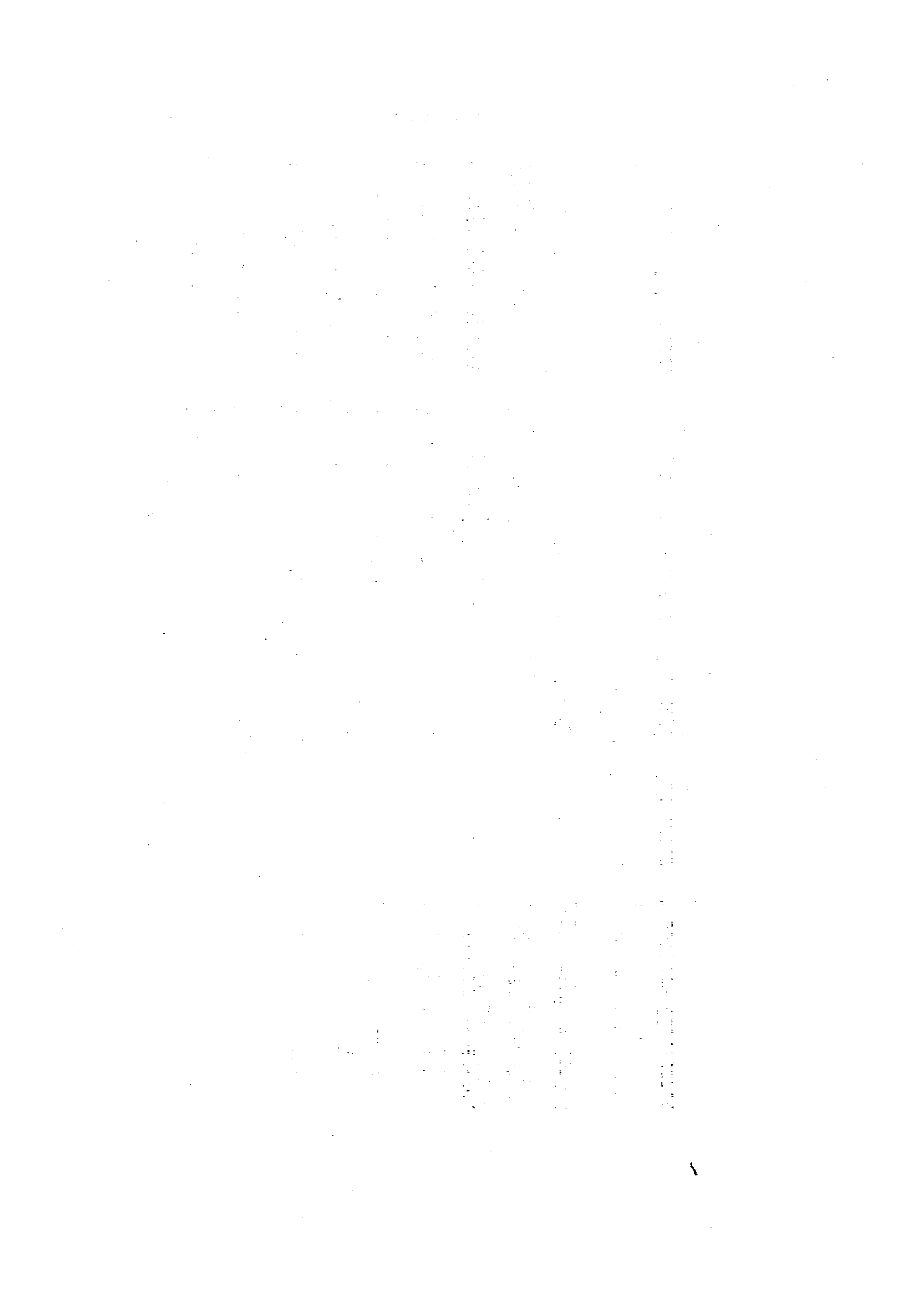
FAC 81 )	I																				
	ERC01	ERC02	ERC03	ERC04	ERC05	ERC06	ERC07	ERC08	ERC09	ERC10	ERC11	ERC12	ERC13	ERC14	ERC15	ERC16	ERC17	ERC18	ERC19	ERC20	
801	1010.	131070.																			
802	0.	4244.	9277.	1363.	5567.	5089.	4377.	4764.	133.	0.	569.	81.	4.	22.	50775.	50775.					
803	-30.	-10941.	-15324.	0.	0.	0.	0.	0.	0.	-2924.	-65.	-14113.	-474.	-14117.	-25854.						
804			-835.	0.	-410.	0.	-85.	-15.	-70.	-341.											
805	0.	0.	0.	0.	0.	0.	0.	0.	0.	0.	0.	0.	0.	0.	0.	0.	0.	0.	0.	0.	
806	0.	0.	0.	0.	0.	0.	0.	0.	0.	0.	0.	0.	0.	0.	0.	0.	0.	0.	0.	0.	
807	0.	0.	0.	0.	0.	0.	0.	0.	0.	0.	0.	0.	0.	0.	0.	0.	0.	0.	0.	0.	
808	0.	0.	0.	0.	0.	0.	0.	0.	0.	0.	0.	0.	0.	0.	0.	0.	0.	0.	0.	0.	
809	0.	0.	0.	0.	0.	0.	0.	0.	0.	0.	0.	0.	0.	0.	0.	0.	0.	0.	0.	0.	
810	0.	0.	0.	0.	0.	0.	0.	0.	0.	0.	0.	0.	0.	0.	0.	0.	0.	0.	0.	0.	
811	0.	0.	0.	0.	0.	0.	0.	0.	0.	0.	0.	0.	0.	0.	0.	0.	0.	0.	0.	0.	
812	0.	0.	0.	0.	0.	0.	0.	0.	0.	0.	0.	0.	0.	0.	0.	0.	0.	0.	0.	0.	
813	0.	0.	0.	0.	0.	0.	0.	0.	0.	0.	0.	0.	0.	0.	0.	0.	0.	0.	0.	0.	
814	0.	0.	0.	0.	0.	0.	0.	0.	0.	0.	0.	0.	0.	0.	0.	0.	0.	0.	0.	0.	
815	0.	0.	0.	0.	0.	0.	0.	0.	0.	0.	0.	0.	0.	0.	0.	0.	0.	0.	0.	0.	
816	0.	0.	0.	0.	0.	0.	0.	0.	0.	0.	0.	0.	0.	0.	0.	0.	0.	0.	0.	0.	

FAC 82 )	I																				
	ERC01	ERC02	ERC03	ERC04	ERC05	ERC06	ERC07	ERC08	ERC09	ERC10	ERC11	ERC12	ERC13	ERC14	ERC15	ERC16	ERC17	ERC18	ERC19	ERC20	
801	3810.	128100.																			
802	0.	4244.	9274.	4241.	2933.	12928.	11208.	16033.	1179.	0.	565.	81.	4.	22.	63415.	63415.					
803	-30.	-10974.	-15354.	0.	0.	0.	0.	0.	0.	-1614.	-301.	-17781.	-510.	-17781.	-32415.						
804			-1233.	0.	-445.	0.	-85.	-15.	-70.	-341.											
805	0.	0.	0.	0.	0.	0.	0.	0.	0.	0.	0.	0.	0.	0.	0.	0.	0.	0.	0.	0.	
806	0.	0.	0.	0.	0.	0.	0.	0.	0.	0.	0.	0.	0.	0.	0.	0.	0.	0.	0.	0.	
807	0.	0.	0.	0.	0.	0.	0.	0.	0.	0.	0.	0.	0.	0.	0.	0.	0.	0.	0.	0.	
808	0.	0.	0.	0.	0.	0.	0.	0.	0.	0.	0.	0.	0.	0.	0.	0.	0.	0.	0.	0.	
809	0.	0.	0.	0.	0.	0.	0.	0.	0.	0.	0.	0.	0.	0.	0.	0.	0.	0.	0.	0.	
810	0.	0.	0.	0.	0.	0.	0.	0.	0.	0.	0.	0.	0.	0.	0.	0.	0.	0.	0.	0.	
811	0.	0.	0.	0.	0.	0.	0.	0.	0.	0.	0.	0.	0.	0.	0.	0.	0.	0.	0.	0.	
812	0.	0.	0.	0.	0.	0.	0.	0.	0.	0.	0.	0.	0.	0.	0.	0.	0.	0.	0.	0.	
813	0.	0.	0.	0.	0.	0.	0.	0.	0.	0.	0.	0.	0.	0.	0.	0.	0.	0.	0.	0.	
814	0.	0.	0.	0.	0.	0.	0.	0.	0.	0.	0.	0.	0.	0.	0.	0.	0.	0.	0.	0.	
815	0.	0.	0.	0.	0.	0.	0.	0.	0.	0.	0.	0.	0.	0.	0.	0.	0.	0.	0.	0.	
816	0.	0.	0.	0.	0.	0.	0.	0.	0.	0.	0.	0.	0.	0.	0.	0.	0.	0.	0.	0.	

FAC 83 )	I																				
	ERC01	ERC02	ERC03	ERC04	ERC05	ERC06	ERC07	ERC08	ERC09	ERC10	ERC11	ERC12	ERC13	ERC14	ERC15	ERC16	ERC17	ERC18	ERC19	ERC20	
801	2270.	134100.																			
802	0.	4244.	9279.	4192.	2455.	9493.	8510.	2155.	453.	0.	560.	81.	4.	22.	62423.	62423.					
803	-30.	-10974.	-15354.	0.	0.	0.	0.	0.	0.	-1548.	-301.	-18127.	-432.	-17435.	-32415.						
804			-1119.	0.	-465.	0.	-85.	-15.	-70.	-341.											
805	0.	0.	0.	0.	0.	0.	0.	0.	0.	0.	0.	0.	0.	0.	0.	0.	0.	0.	0.	0.	
806	0.	0.	0.	0.	0.	0.	0.	0.	0.	0.	0.	0.	0.	0.	0.	0.	0.	0.	0.	0.	
807	0.	0.	0.	0.	0.	0.	0.	0.	0.	0.	0.	0.	0.	0.	0.	0.	0.	0.	0.	0.	
808	0.	0.	0.	0.	0.	0.	0.	0.	0.	0.	0.	0.	0.	0.	0.	0.	0.	0.	0.	0.	
809	0.	0.	0.	0.	0.	0.	0.	0.	0.	0.	0.	0.	0.	0.	0.	0.	0.	0.	0.	0.	
810	0.	0.	0.	0.	0.	0.	0.	0.	0.	0.	0.	0.	0.	0.	0.	0.	0.	0.	0.	0.	
811	0.	0.	0.	0.	0.	0.	0.	0.	0.	0.	0.	0.	0.	0.	0.	0.	0.	0.	0.	0.	
812	0.	0.	0.	0.	0.	0.	0.	0.	0.	0.	0.	0.	0.	0.	0.	0.	0.	0.	0.	0.	
813	0.	0.	0.	0.	0.	0.	0.	0.	0.	0.	0.	0.	0.	0.	0.	0.	0.	0.	0.	0.	
814	0.	0.	0.	0.	0.	0.	0.	0.	0.	0.	0.	0.	0.	0.	0.	0.	0.	0.	0.	0.	
815	0.	0.	0.	0.	0.	0.	0.	0.	0.	0.	0.	0.	0.	0.	0.	0.	0.	0.	0.	0.	
816	0.	0.	0.	0.	0.	0.	0.	0.	0.	0.	0.	0.	0.	0.	0.	0.	0.	0.	0.	0.	



## 6-7 エネルギー需要予測の今後の改善点

本プロジェクトにおいて、我々が構築したインドネシア中長期エネルギー需給予測モデルは、あくまでも基本的な骨組みのようなものであり、残された課題も多い。以下では、マクロ経済モデルとエネルギー需給モデルの2つに分類して課題を挙げていくことにする。

### 6-7-1 マクロ経済モデル

マクロ経済モデルにおける問題点は、まず第1にデータのバラエティが少ないことである。具体的には、所得勘定の項目が国民所得のみであり、それを説明変数としてたくさんの方程式で使用しているが、本来ならば、賃金・個人可処分所得・法人所得などに分類されるべき性質のものであり、今後に残された課題である。また、できれば、失業率・稼働率・労働生産性・金利なども、モデルの中に採り入れたい変数である。第2に、データのサンプル期間が1971～1978年の8年間と短期間であるという点である。8年間のデータから推計した構造方程式で1990年までの予測を行うということには各種の問題があり、予測結果の信頼性にも疑問点が出てくる。したがって、1970年以前のマクロ経済データの整備・充実ができるだけ速やかに行われることが望ましい。第3に、マクロ経済とエネルギー需給を結び付ける変数の拡充ということが挙げられる。具体的には、本モデルでは自動車保有台数の数字は、データアベイラビリティの制約から、合計の数字だけしか使用できなかったが、将来はこれを、車種別には、乗用車・バス・トラックなどに、エネルギー源別には、ガソリン車・軽油車などに分類することが必要である。また、航空輸送量・船舶輸送量・鉄道輸送量・家庭用発電機保有台数などの変数を採り入れることも検討すべきである。

### 6-7-2 エネルギー需給モデル

エネルギー需給モデルにおける問題点は、第1に、マクロ経済モデルの場合と同様に、1970年以前のデータの整備・充実である。第2は、我々は本モデルでは、時間の制約などから、簡約エネルギー・バランス表を作成し、それを使用した。将来はエネルギー源別、エネルギー供給・消費部門別に、より細かく分類された、オリジナルのエネルギー・バランス表を使用してモデルを拡大する必要があるという点である。第3は、最終消費部門のエネルギー消費の推計式の中に、本モデルでは、あまり有意な結果が得られなかったということから、価格要因を説明変数としてほとんど使用しなかったが、今後、何らかの方法を考えて、価格効果を採り入れていくことが必要である。第4は、同じく最終消費部門エネルギー消費の推計式で、有意な結果が得られなかったものについて、便宜的に弾性値（GDP弾性値・政府消費支出弾性値など）をかなり説明変数として使用しているが、弾性値を説明変数として使用することには、いろい

るな問題があり、他の適当な説明変数で置き換えていくとが必要である。

以上、述べてきたように、本プロジェクトで構築したインドネシア中長期エネルギー需給予測モデルは、時間的制約、データの有効性（Data Availability）の制約などがら、いろいろな課題を抱えており、我々としては、将来このモデルを基礎として、モデルの拡大・充実のための精力的な活動が行われることを、関係各位に期待するものである。

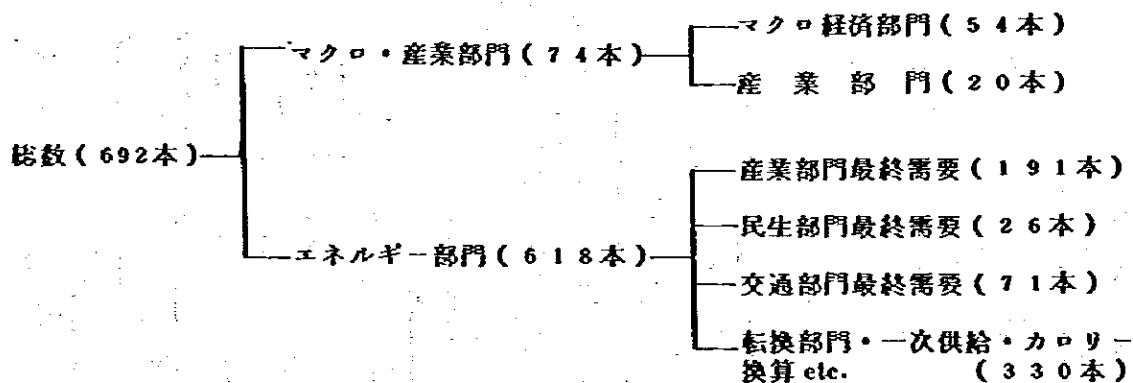
付. 日本の中長期エネルギー需給予測モデルの概要 (参考資料)

A-1 モデルの主な特徴

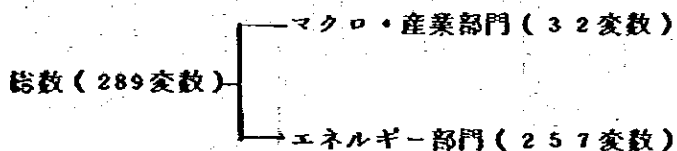
- ① マクロ経済モデルとリンクしてシミュレーションできること。
- ② エネルギー需給のデータを、(財)日本エネルギー経済研究所が作成したエネルギー・バランス表からとっていること。予測結果がエネルギー・バランス表形成でアウトプットされること。
- ③ 一次エネルギーの生産、一次エネルギー源から二次エネルギー源への転換というエネルギー経済固有のプロセスを各エネルギー生産・転換部門の技術的特性(生産効率・所内率・ロス率 etc.)を考慮してモデルにとり込んでいること。
- ④ 国内一次エネルギー供給可能量(原子力・水力 etc.)を政策変数扱いとしていること。

A-2 モデルの規模

① 方程式数(内生変数)



② 外生変数

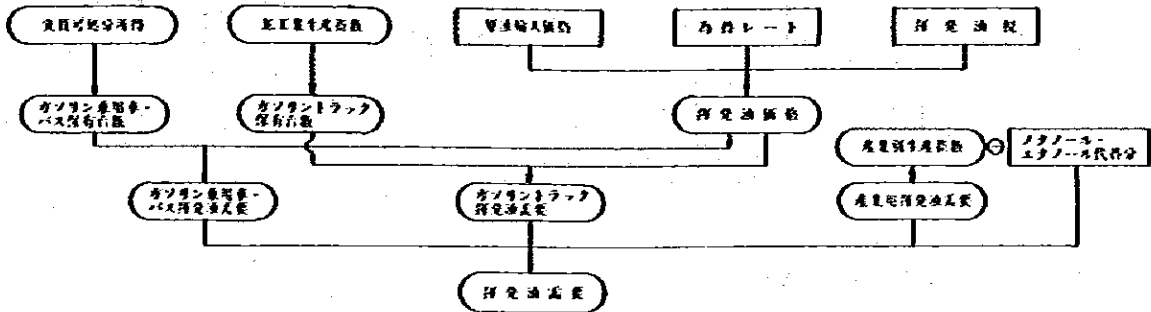




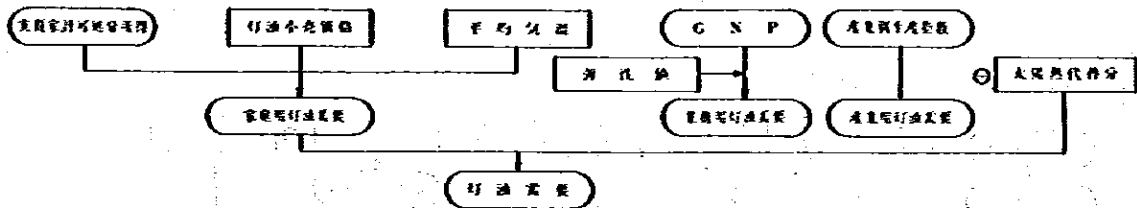


A-6 主要エネルギー源別需要予測モデルの概要

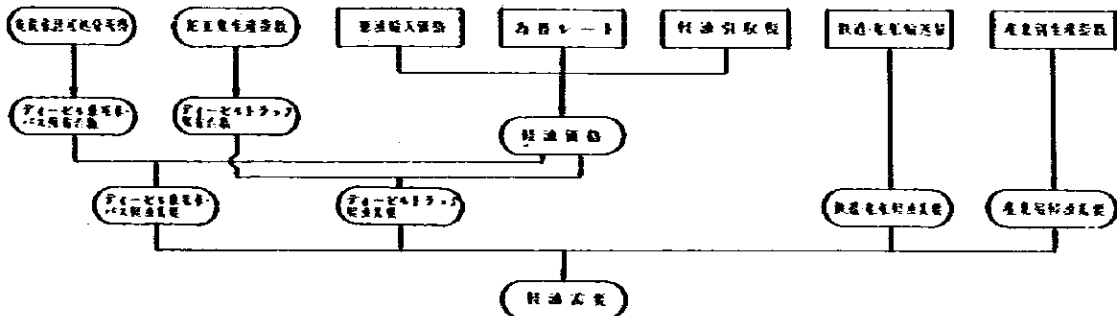
① 揮発油需要モデルの概要



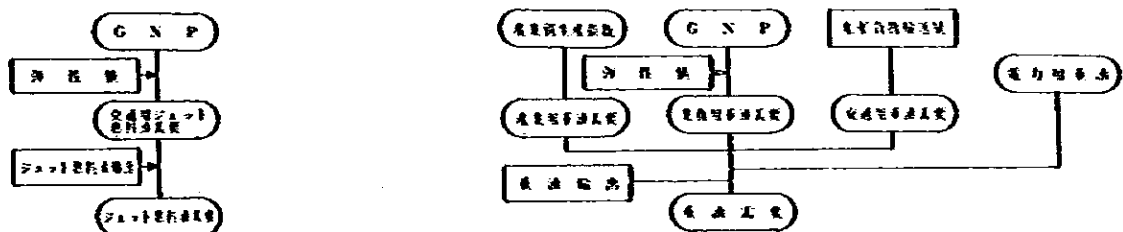
② 灯油需要モデルの概要



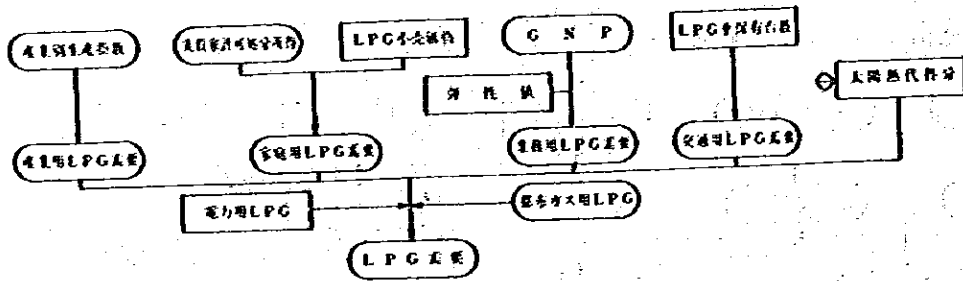
③ 軽油需要モデルの概要



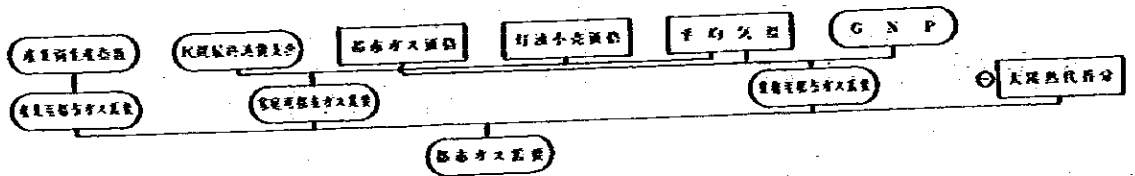
④ ジェット燃料油・重油需要モデルの概要



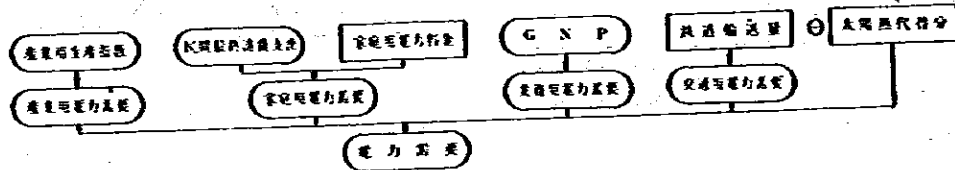
⑤ LPG需要モデルの概要

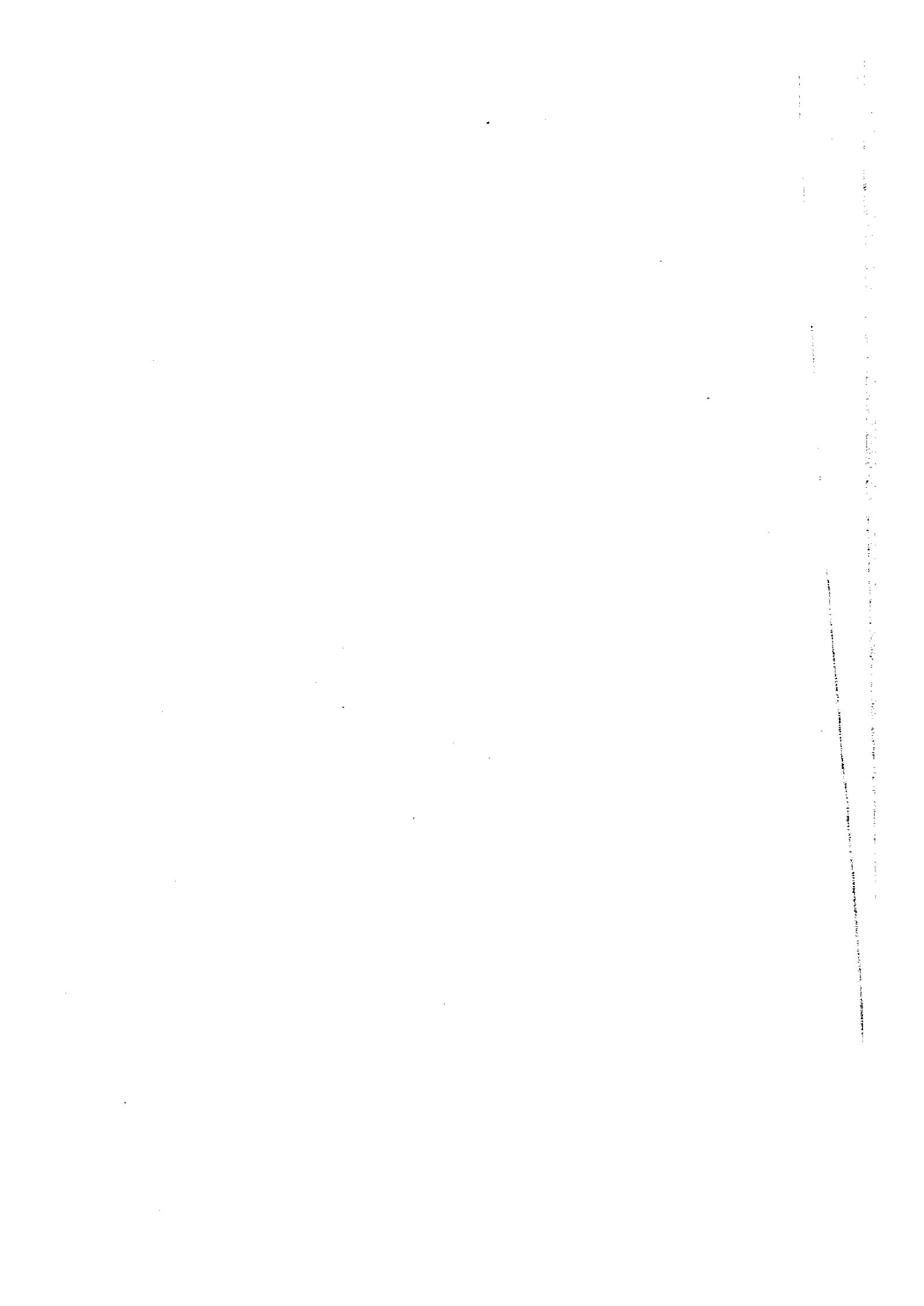


⑥ 都市ガス需要モデルの概要



⑦ 電力需要モデルの概要









JICA