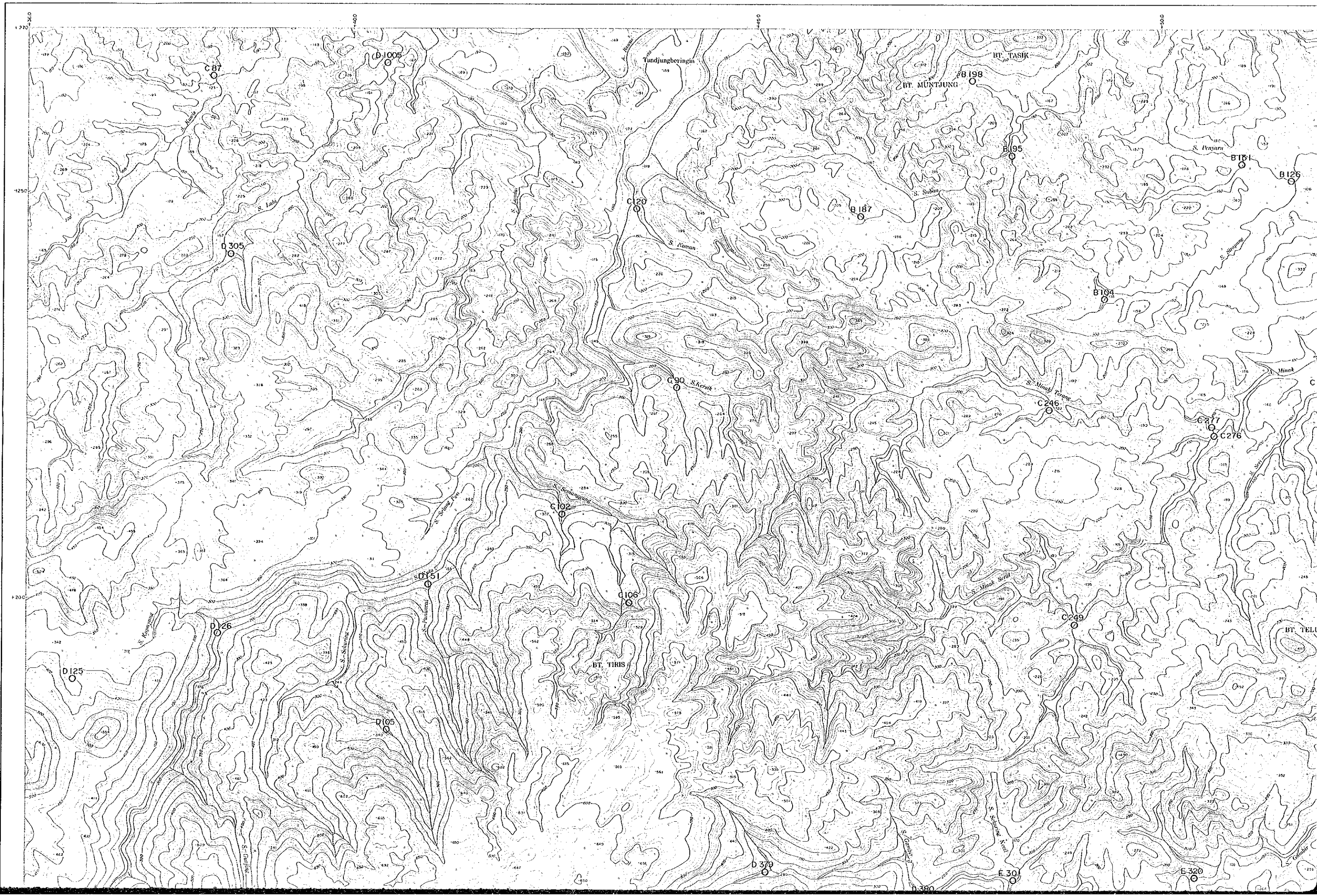
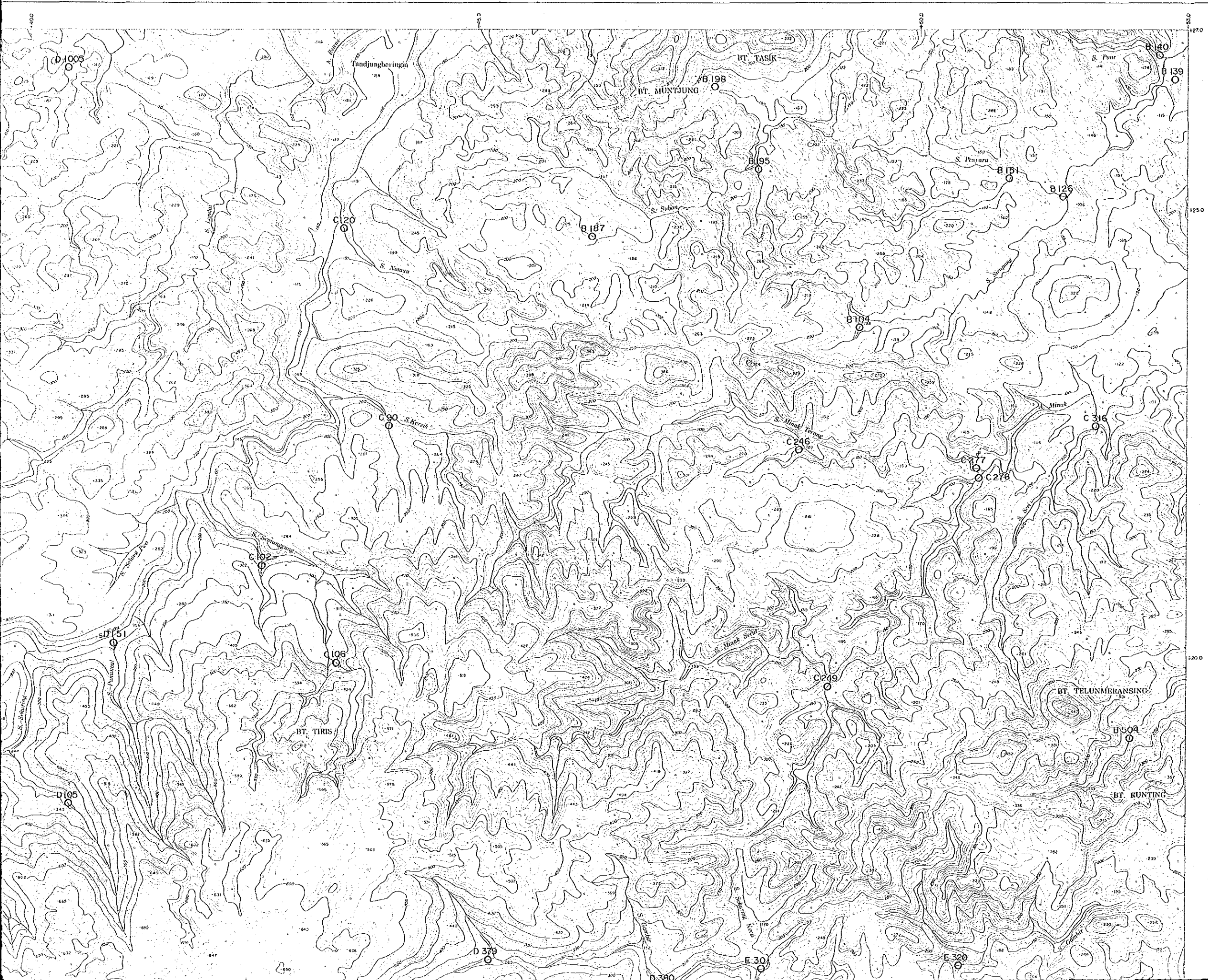


# TAUDJUNGBERINGIN No.5



# TAUDJUNGBERINGIN No.5

16218  
国産資料作成者



PL. VII-5

REPORT ON THE MINERAL EXPLORATION OF  
SOUTHERN SUMATERA AREA, THE REPUBLIC OF INDONESIA  
PHASE II

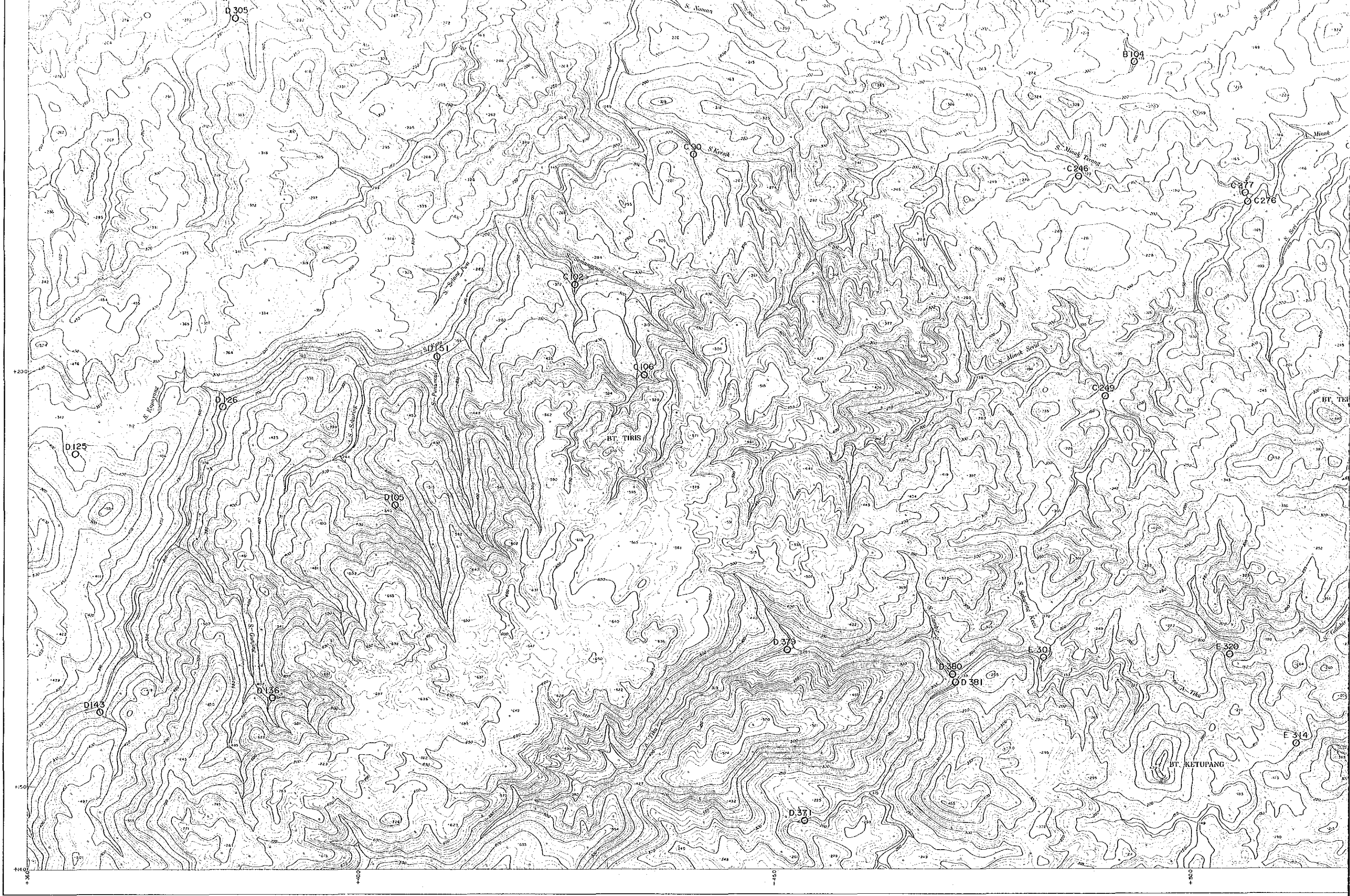
SAMPLE LOCATION MAPS OF ICP ANALYSIS (VIII-5)

FEBRUARY · 1987

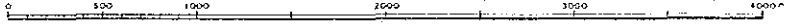
JAPAN INTERNATIONAL COOPERATION AGENCY  
METAL MINING AGENCY OF JAPAN

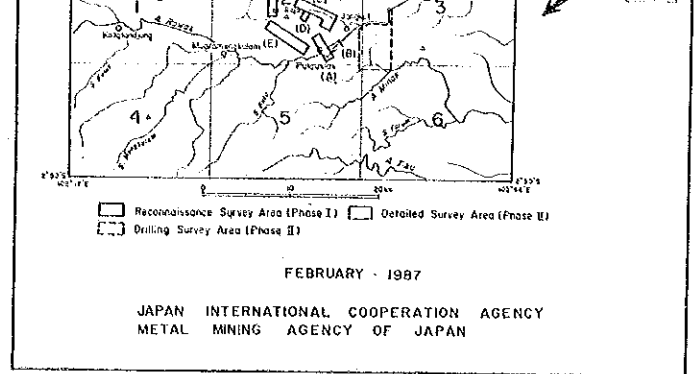
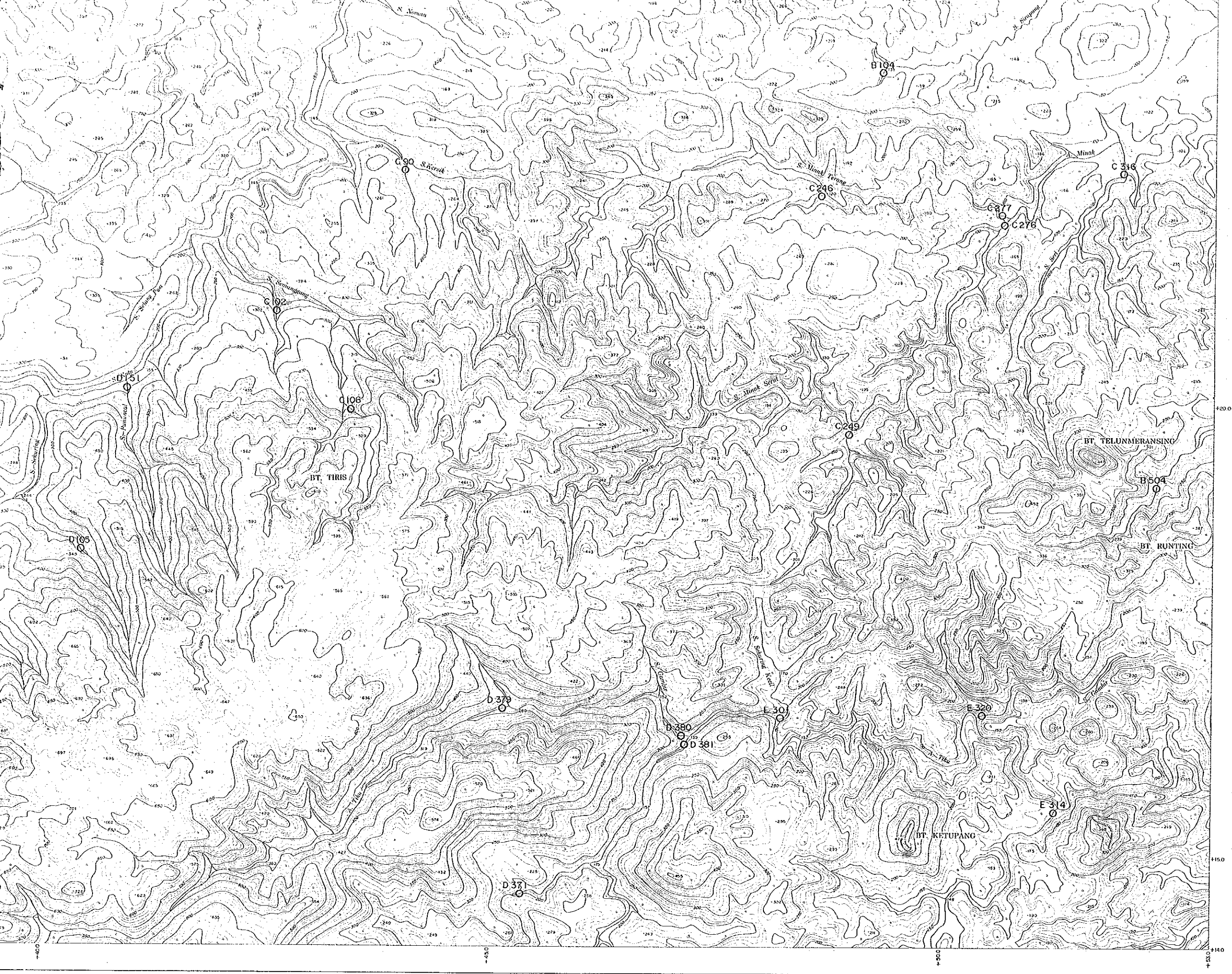
**LEGEND**  
○ No. Sampling points of Stream sediments  
(I.C.P. Assay)



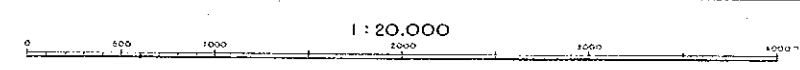


1 : 20,000





LEGEND  
 O No. Sampling points of Stream sediments  
 (I.C.P. Assay)







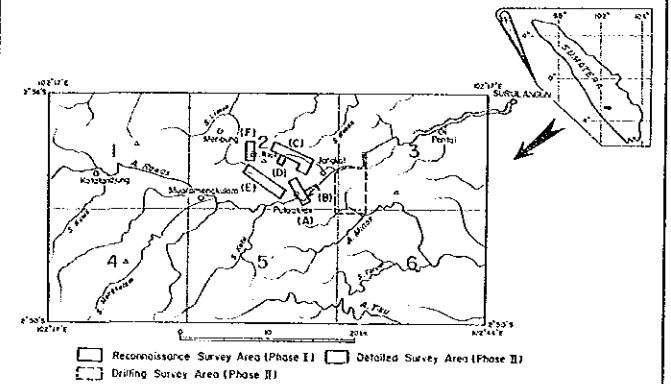
# A. MINAK No.6

16213

PL. 13-6

REPORT ON THE MINERAL EXPLORATION OF  
SOUTHERN SUMATRA AREA, THE REPUBLIC OF INDONESIA  
PHASE II

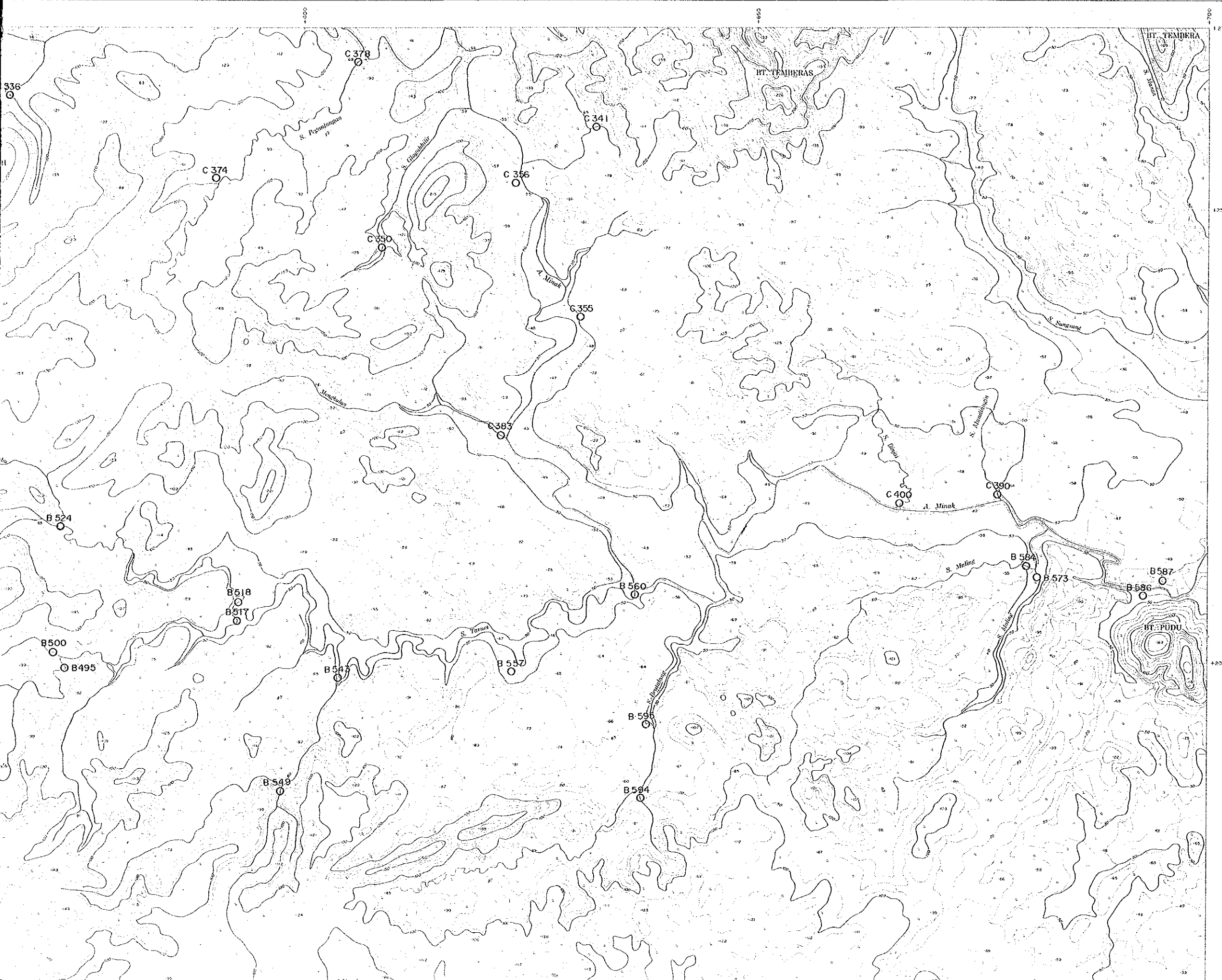
SAMPLE LOCATION MAPS OF ICP ANALYSIS (VIII-6)

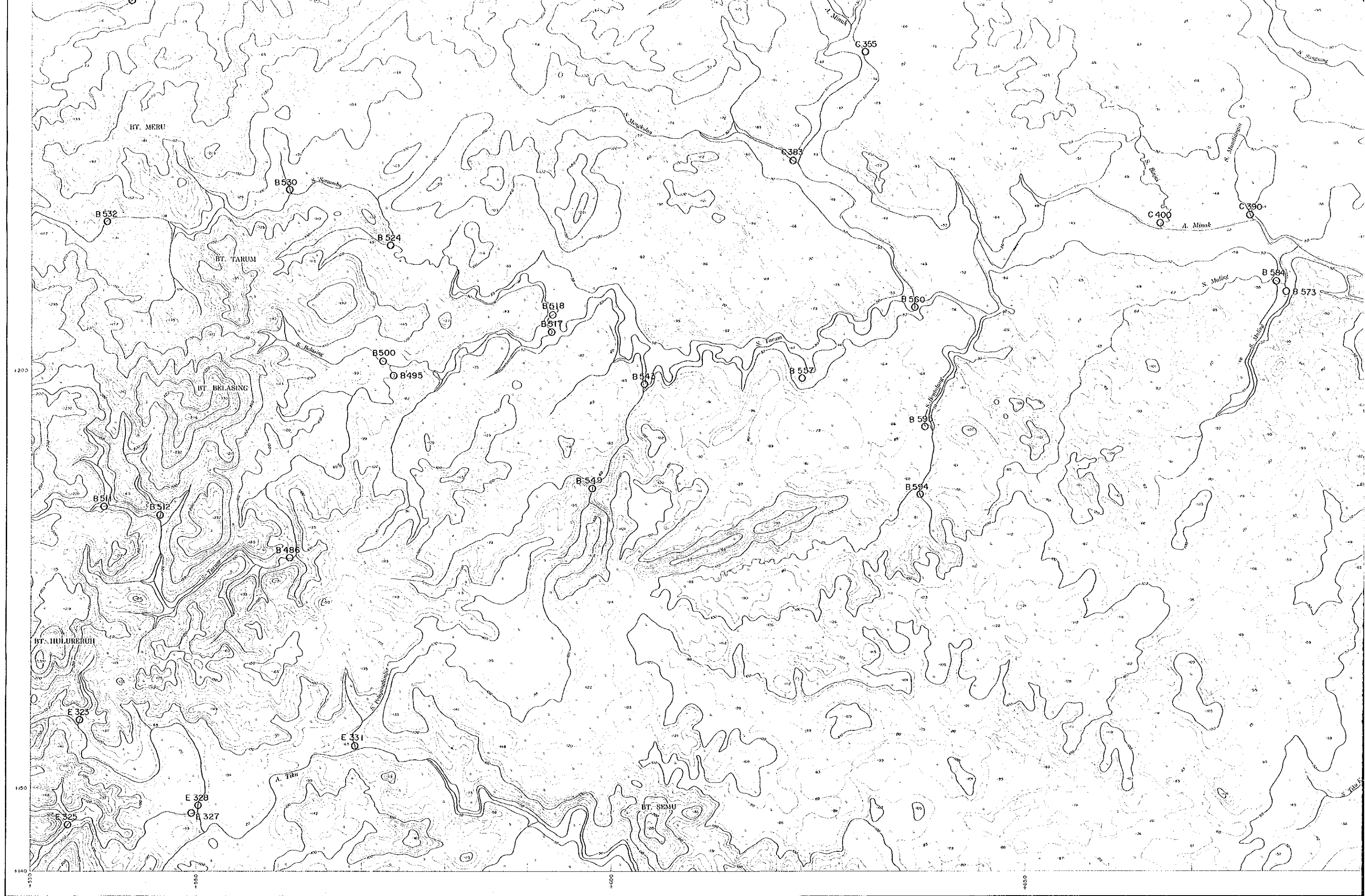


FEBRUARY - 1987

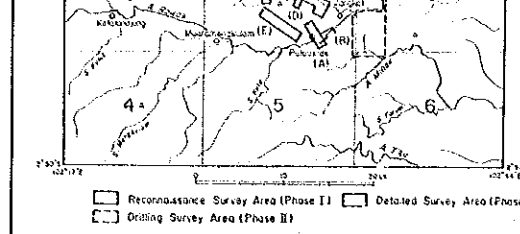
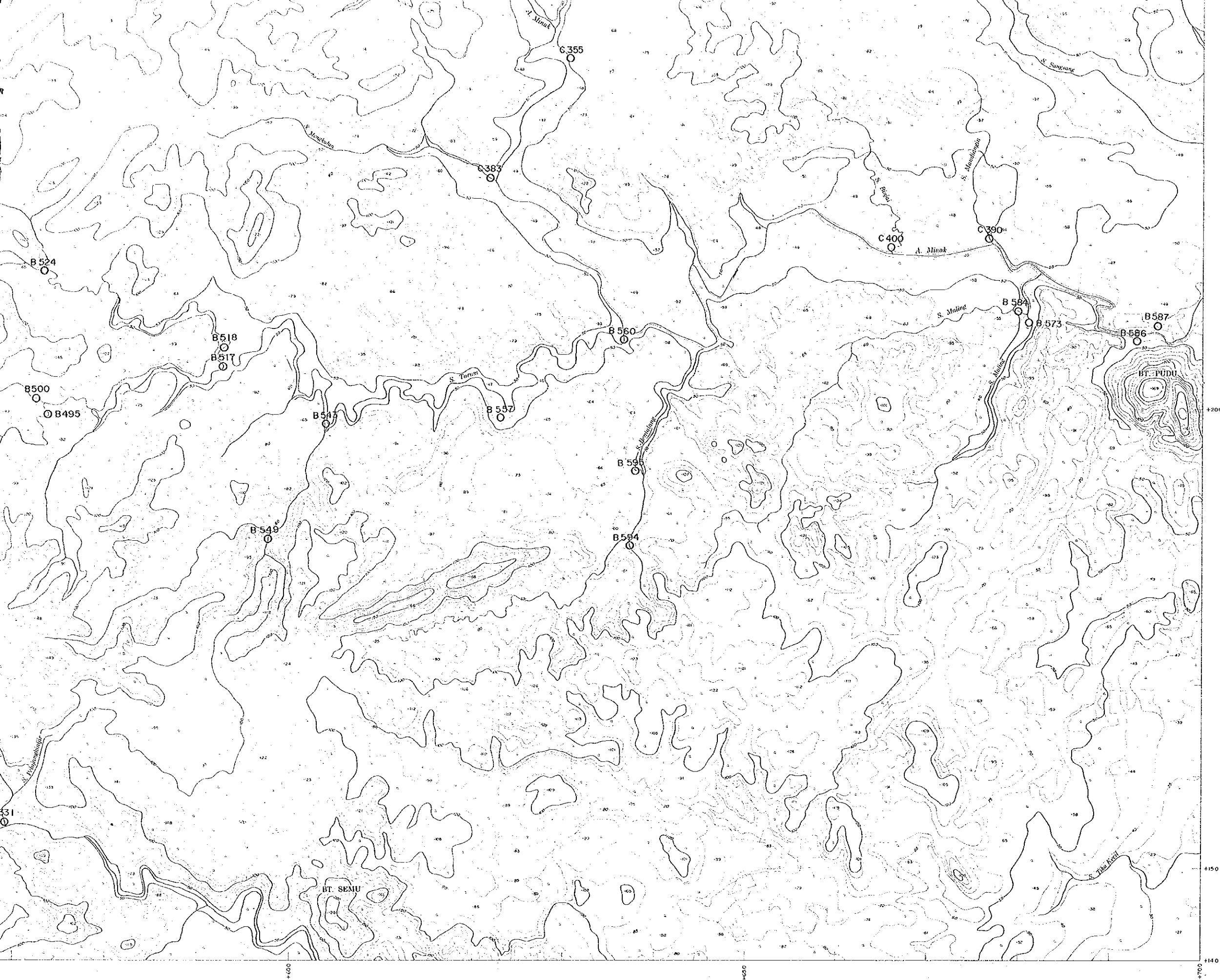
JAPAN INTERNATIONAL COOPERATION AGENCY  
METAL MINING AGENCY OF JAPAN

LEGEND  
O No. Sampling points of Stream sediments  
(I.C.P. Assay)





1 : 20.000



FEBRUARY - 1987

JAPAN INTERNATIONAL COOPERATION AGENCY  
METAL MINING AGENCY OF JAPAN

**LEGEND**  
 O No. Sampling points of Stream sediments  
 (I.C.P. Assay)

