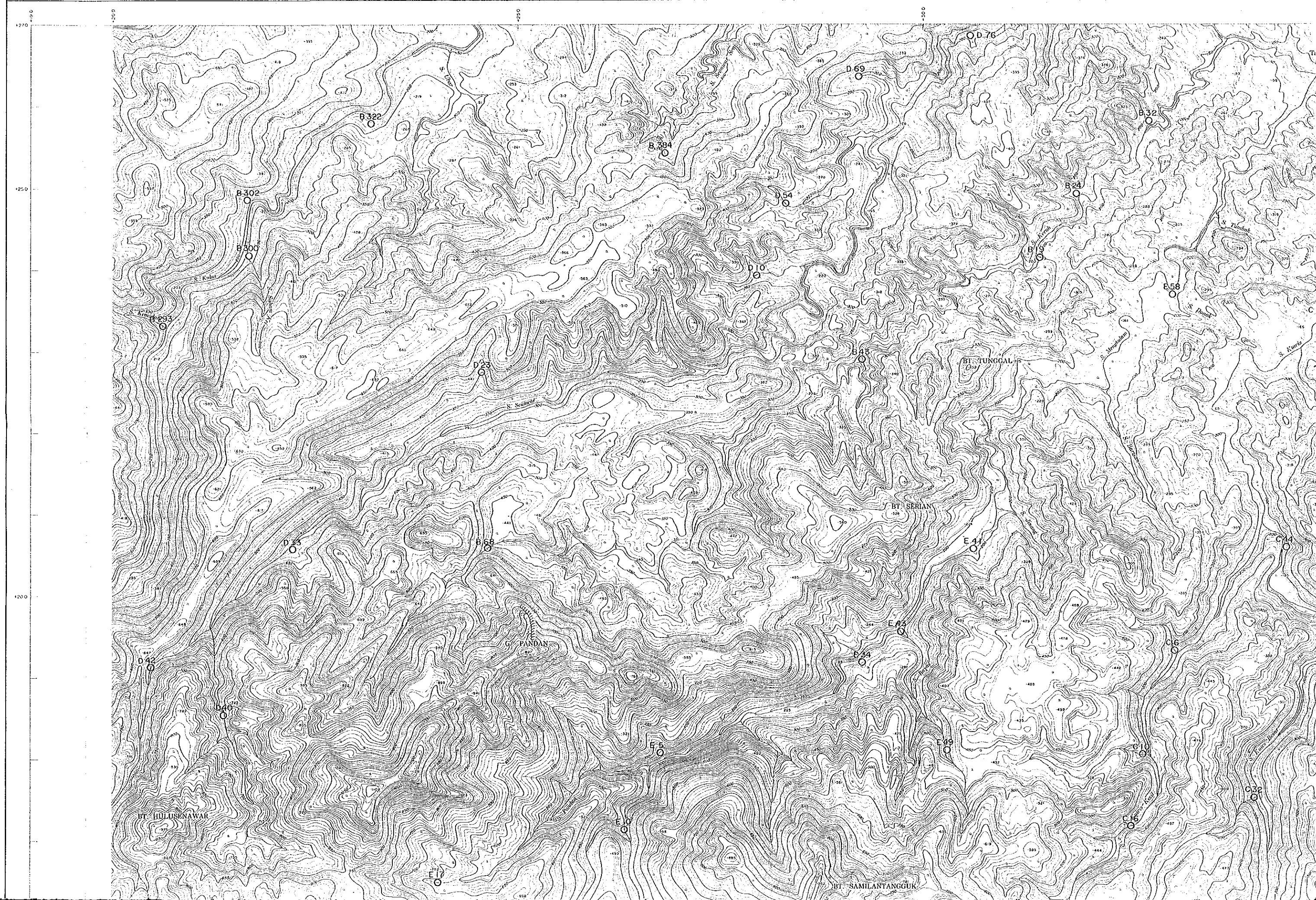




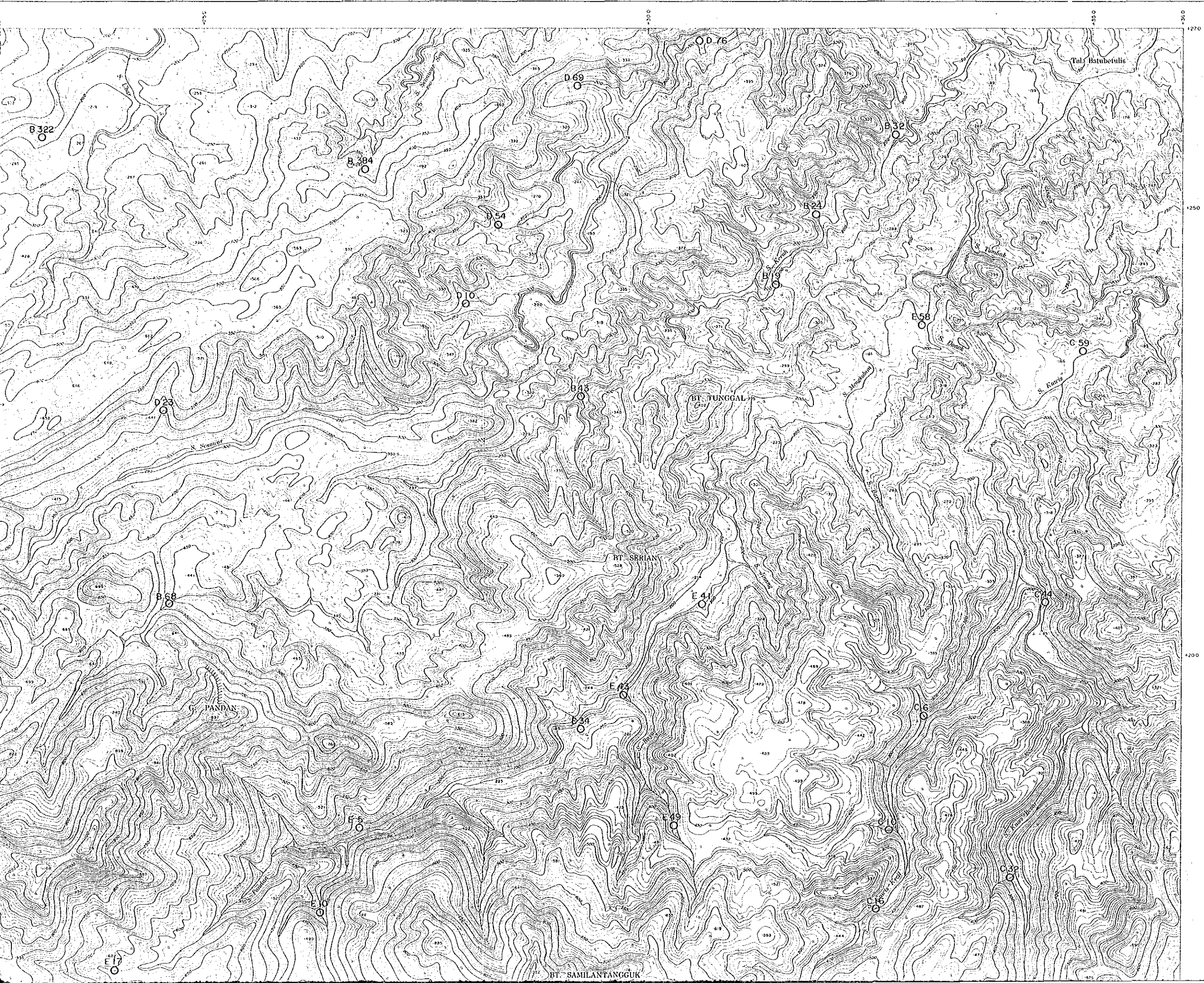
1 : 20,000

G. PANDAN No.4



G. PANDAN No.4

16218
 1:50,000



PL. W-4

REPORT ON THE MINERAL EXPLORATION OF
 SOUTHERN SUMATERA AREA, THE REPUBLIC OF INDONESIA
 PHASE II

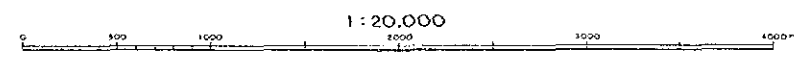
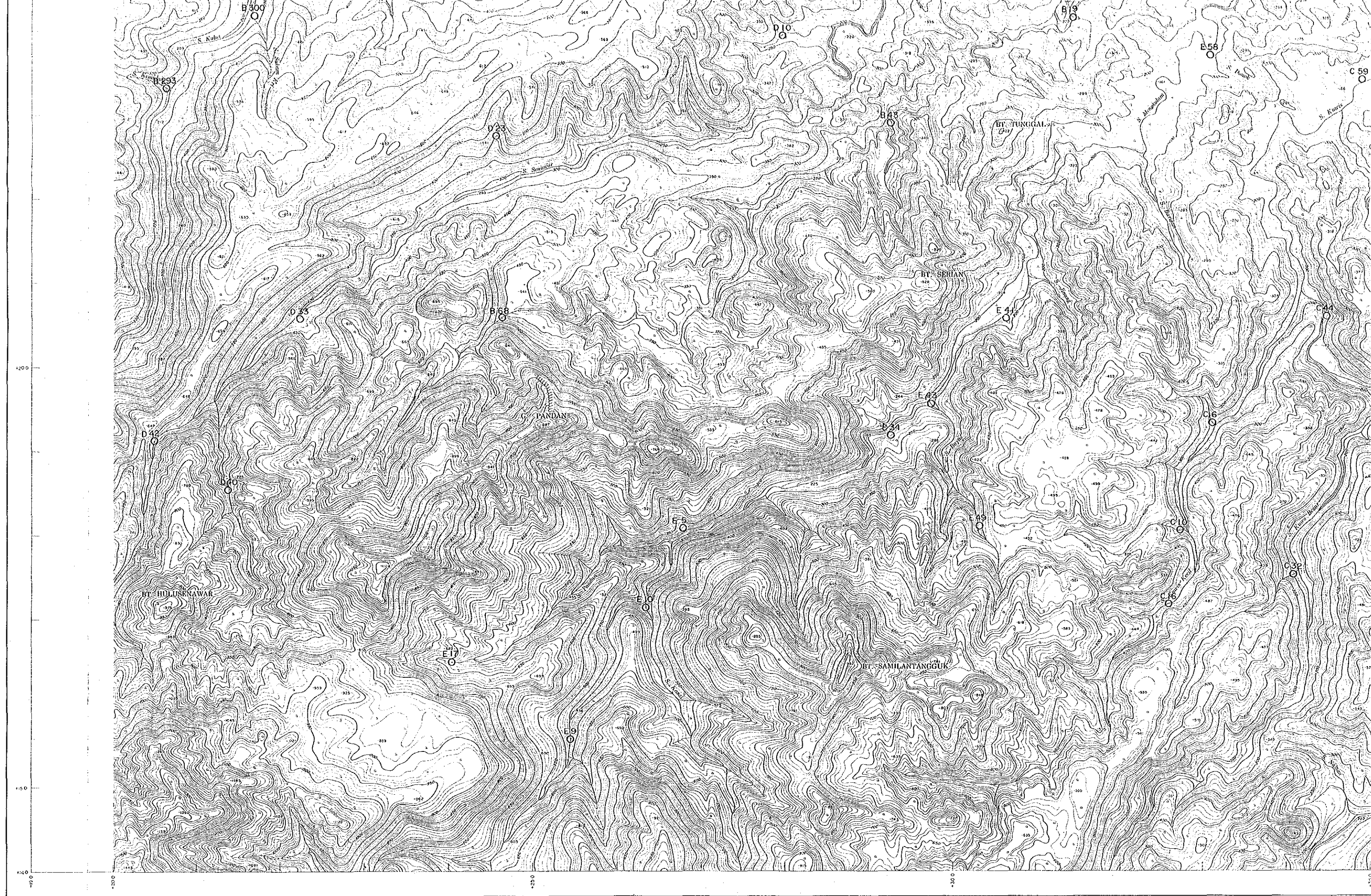
SAMPLE LOCATION MAPS OF ICP ANALYSIS (VIII-4)

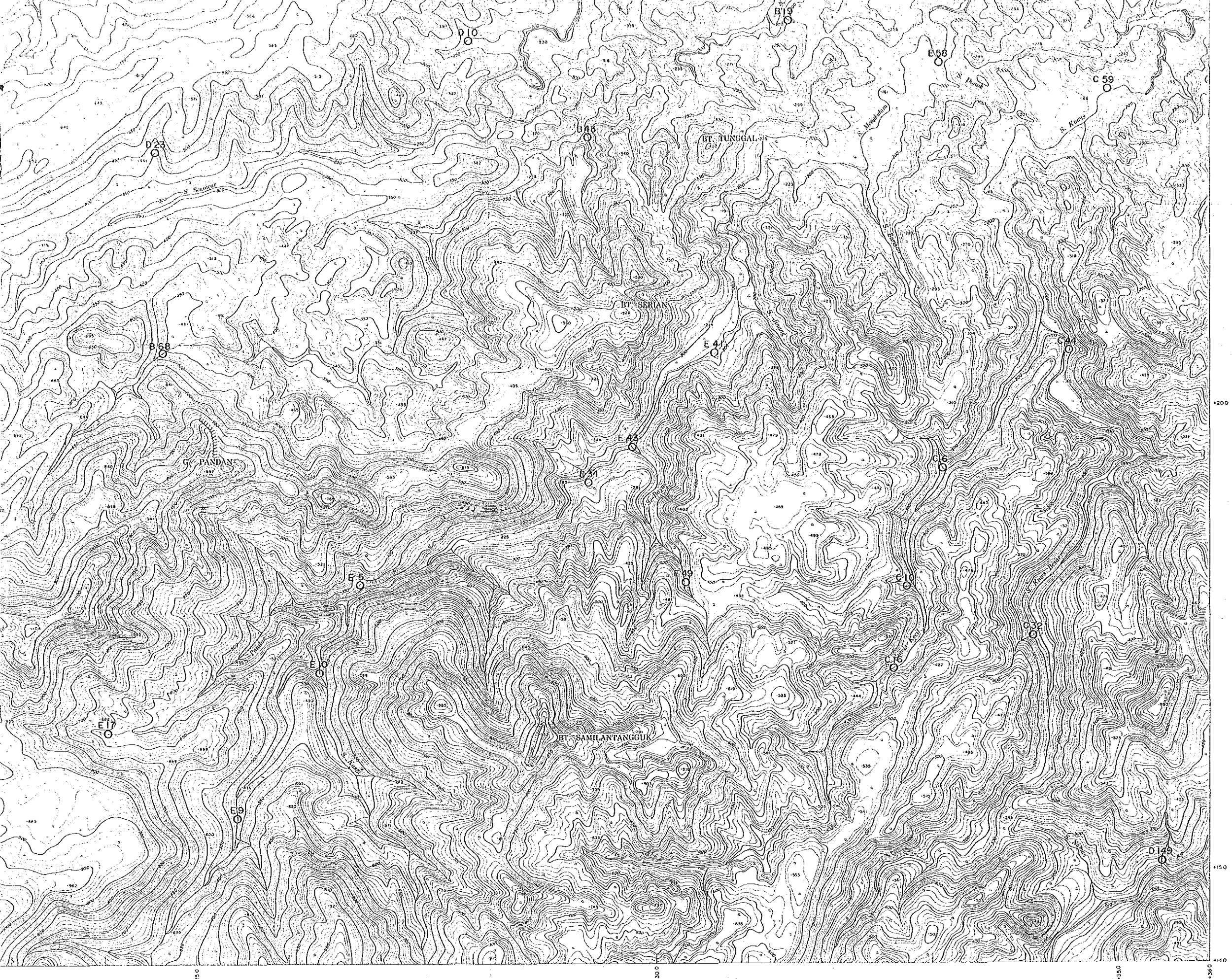
Reconnaissance Survey Area (Phase I) Detailed Survey Area (Phase II)
 Drilling Survey Area (Phase II)

FEBRUARY - 1987

JAPAN INTERNATIONAL COOPERATION AGENCY
 METAL MINING AGENCY OF JAPAN

LEGEND
 O No. Sampling points of Stream sediments
 (I.C.P. Assay)





FEBRUARY · 1987
 JAPAN INTERNATIONAL COOPERATION AGENCY
 METAL MINING AGENCY OF JAPAN

LEGEND
 ○ No. Sampling points of Stream sediments
 (I.C.P. Assay)

