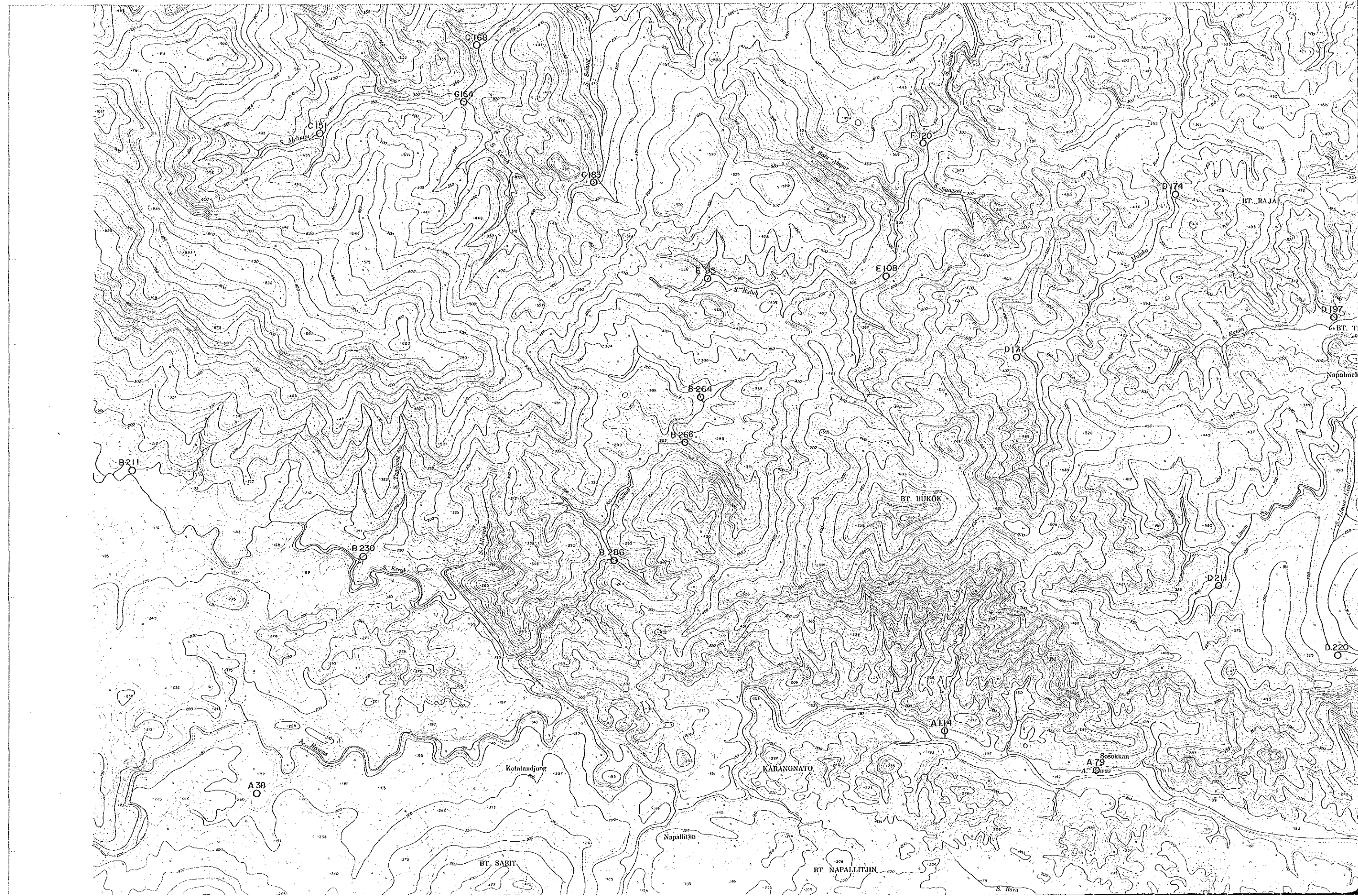
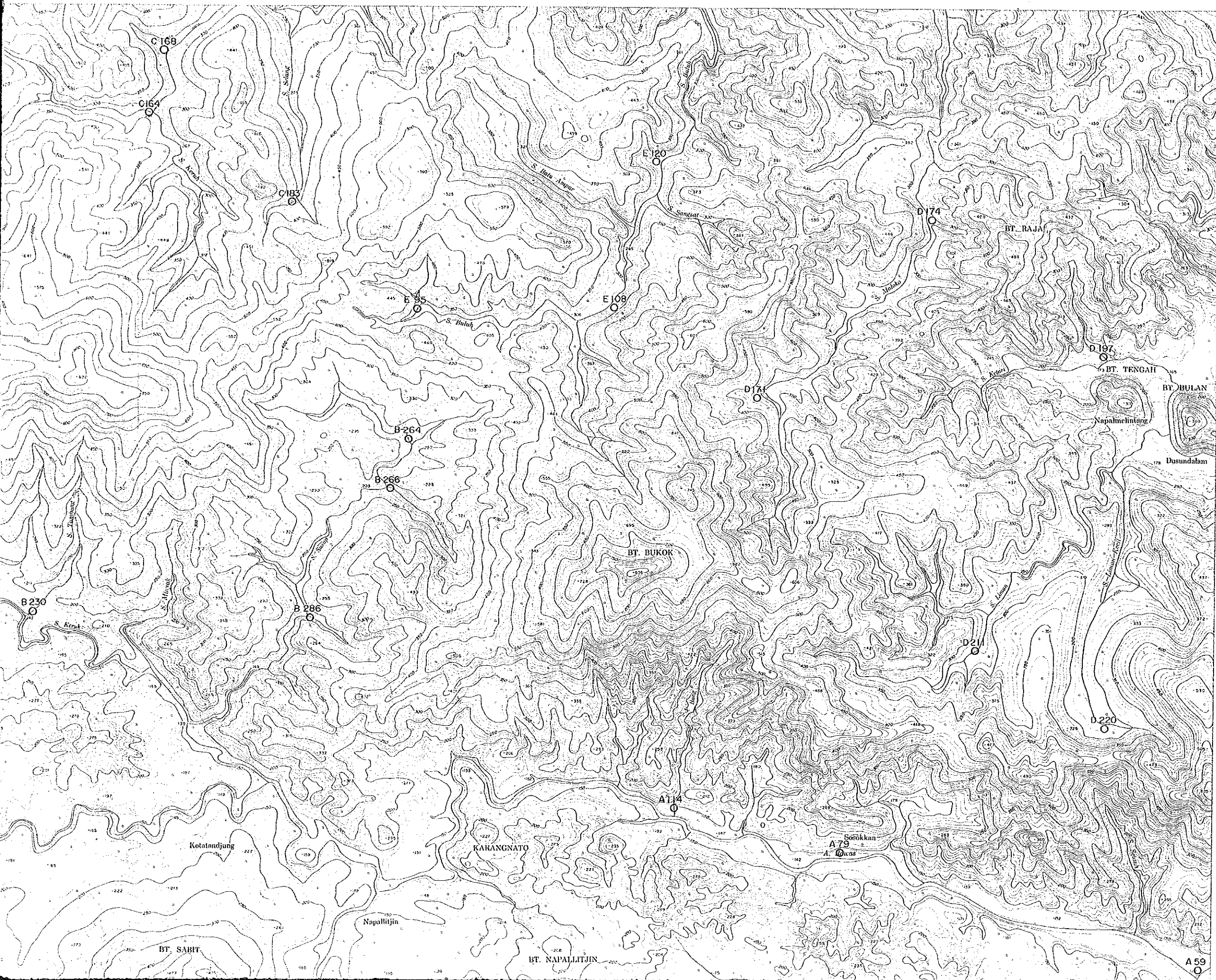


NAPA LLITJIN No.1



NAPA LLITJIN No. 1

16218



PL. VII-1

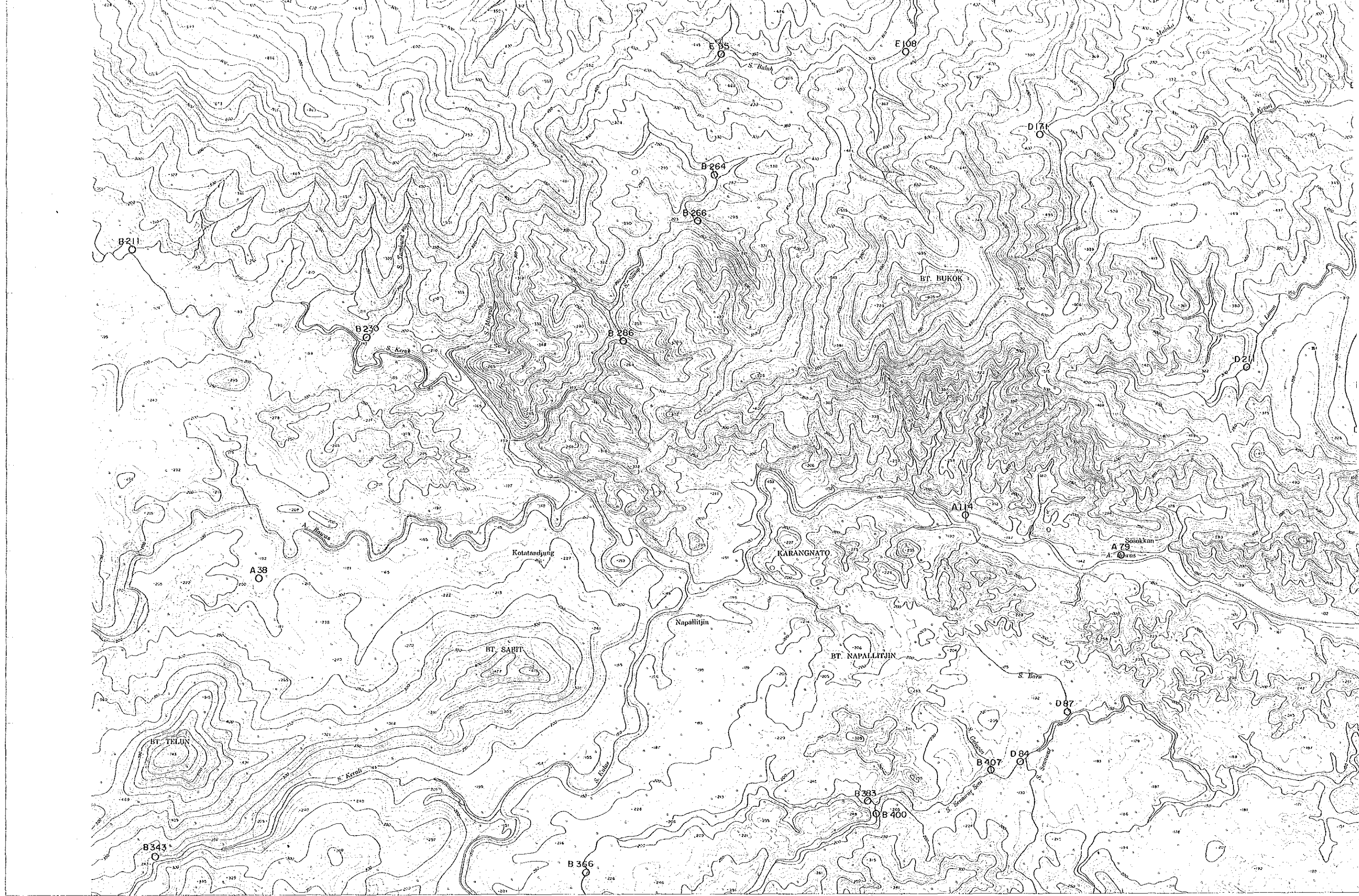
REPORT ON THE MINERAL EXPLORATION OF
SOUTHERN SUMATERA AREA, THE REPUBLIC OF INDONESIA
PHASE II

SAMPLE LOCATION MAPS OF ICP ANALYSIS (VIII-1)

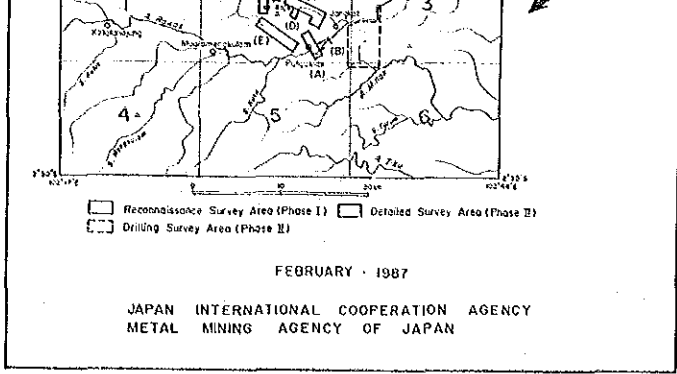
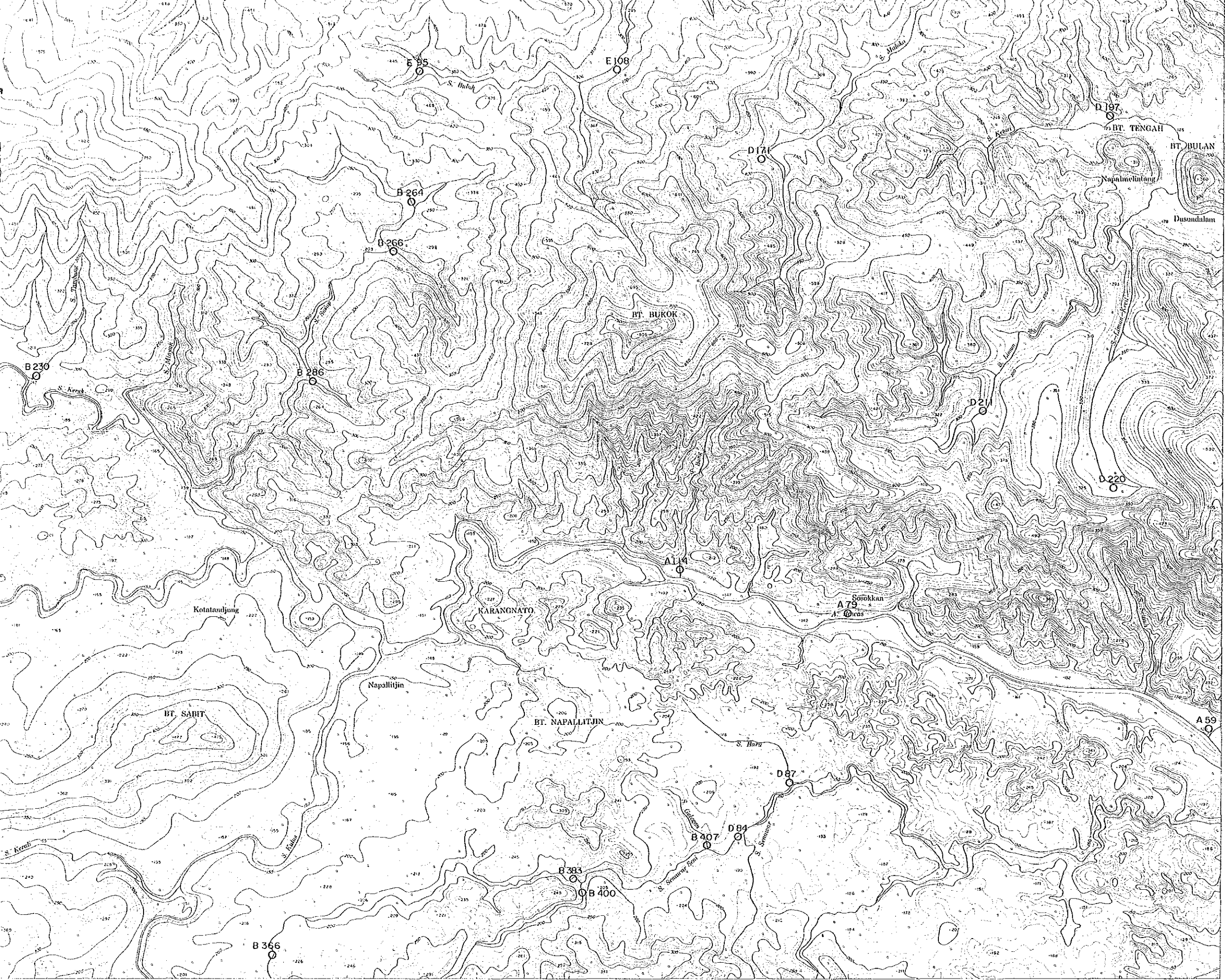
FEBRUARY - 1987

JAPAN INTERNATIONAL COOPERATION AGENCY
METAL MINING AGENCY OF JAPAN

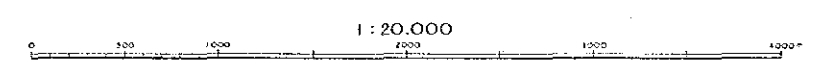
LEGEND
O No. Sampling points of Stream sediments
(I.C.P. Assay)



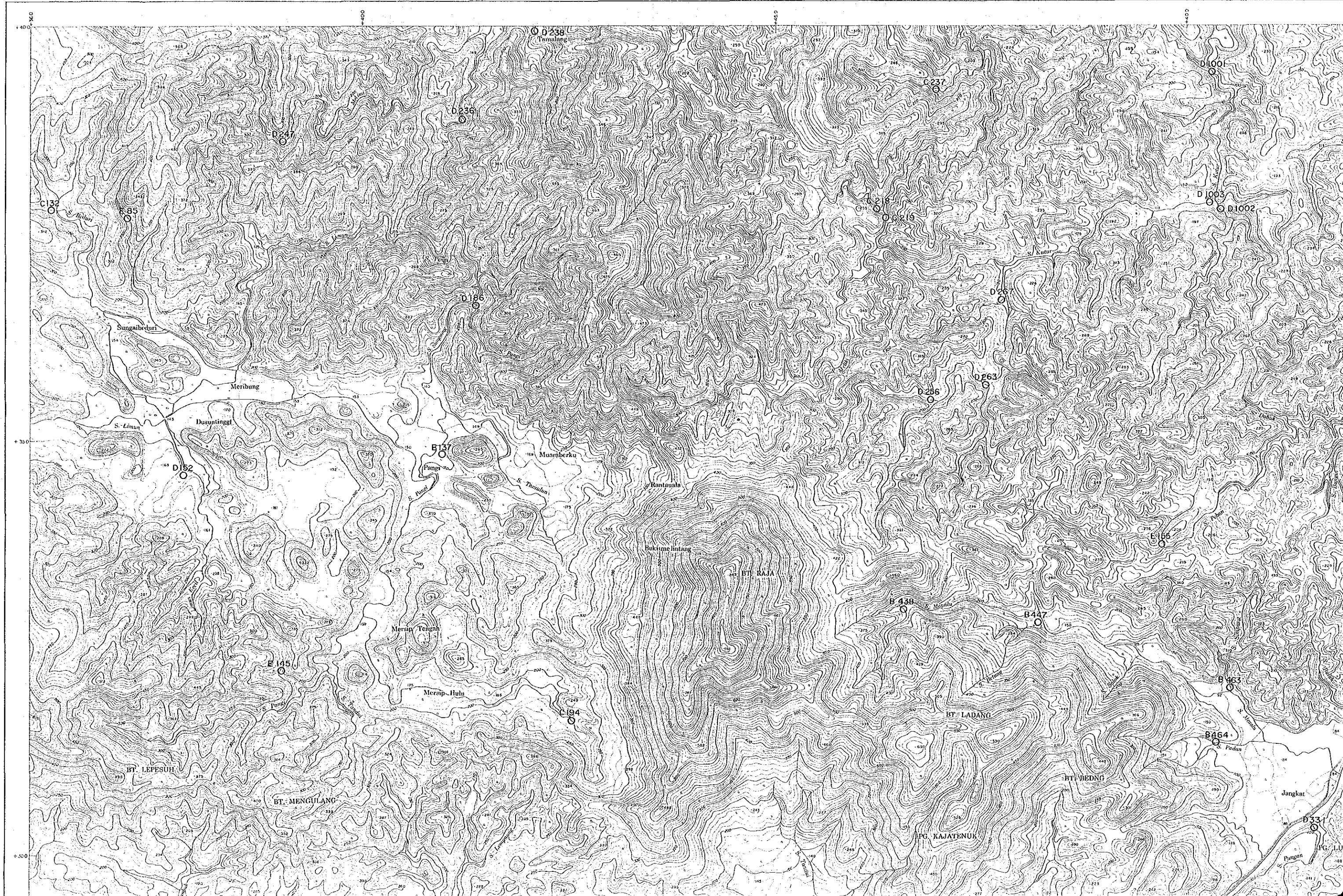
0 500 1000 1500 2000
I : 20,000



LEGEND
 O No. Sampling points of Stream sediments
 (I. C. P. Assay)

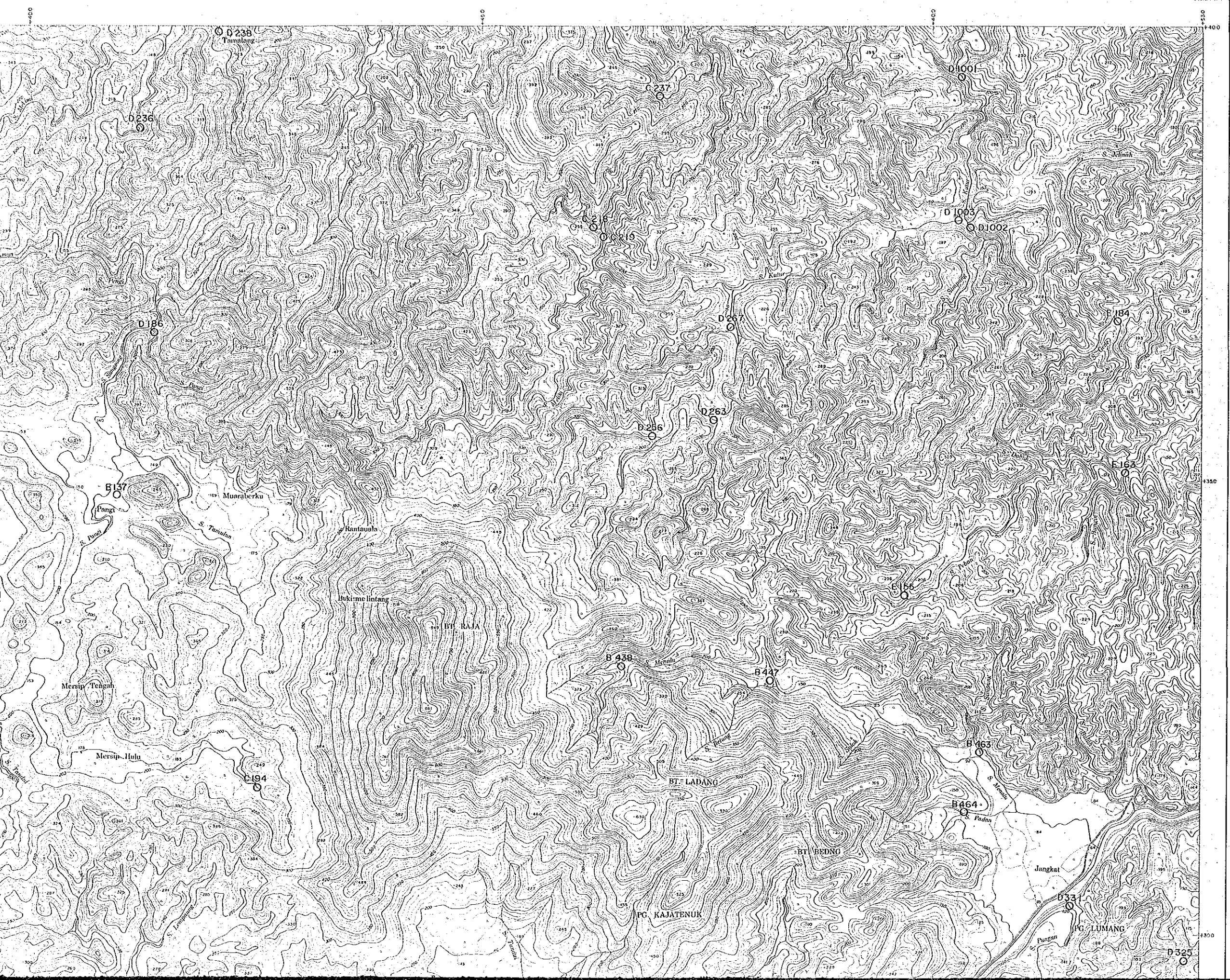


PULAUKIDAK No.2



PULAUKIDAK No.2

16218



PL. W-2

REPORT ON THE MINERAL EXPLORATION OF
SOUTHERN SUMATERA AREA, THE REPUBLIC OF INDONESIA
PHASE II

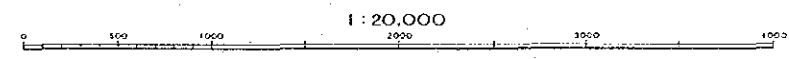
SAMPLE LOCATION MAPS OF ICP ANALYSIS (VIII-2)

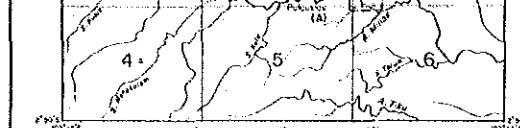
Reconnaissance Survey Area (Phase I)
 Detailed Survey Area (Phase II)
 Drilling Survey Area (Phase II)

FEBRUARY - 1987

JAPAN INTERNATIONAL COOPERATION AGENCY
METAL MINING AGENCY OF JAPAN

LEGEND
O No. Sampling points of Stream sediments
(I.C.P. Assay)



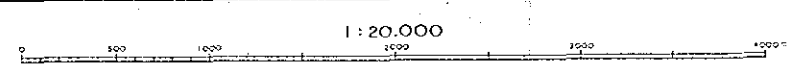


Reconnaissance Survey Area (Phase I) Detailed Survey Area (Phase II)
 Drilling Survey Area (Phase II)

FEBRUARY - 1987
 JAPAN INTERNATIONAL COOPERATION AGENCY
 METAL MINING AGENCY OF JAPAN



LEGEND
 O No. Sampling points of Stream sediments
 (I.C.P. Assay)



1 : 20,000