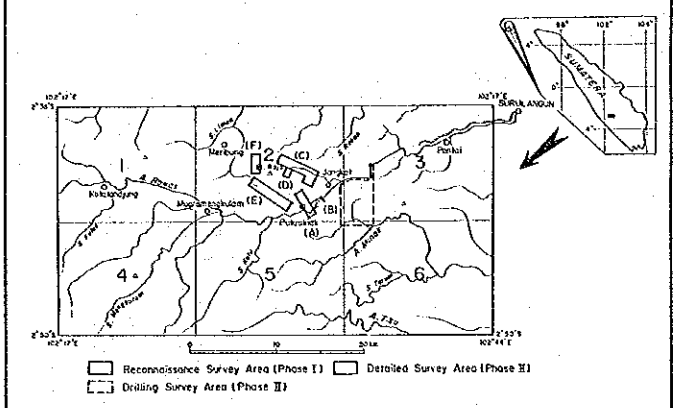


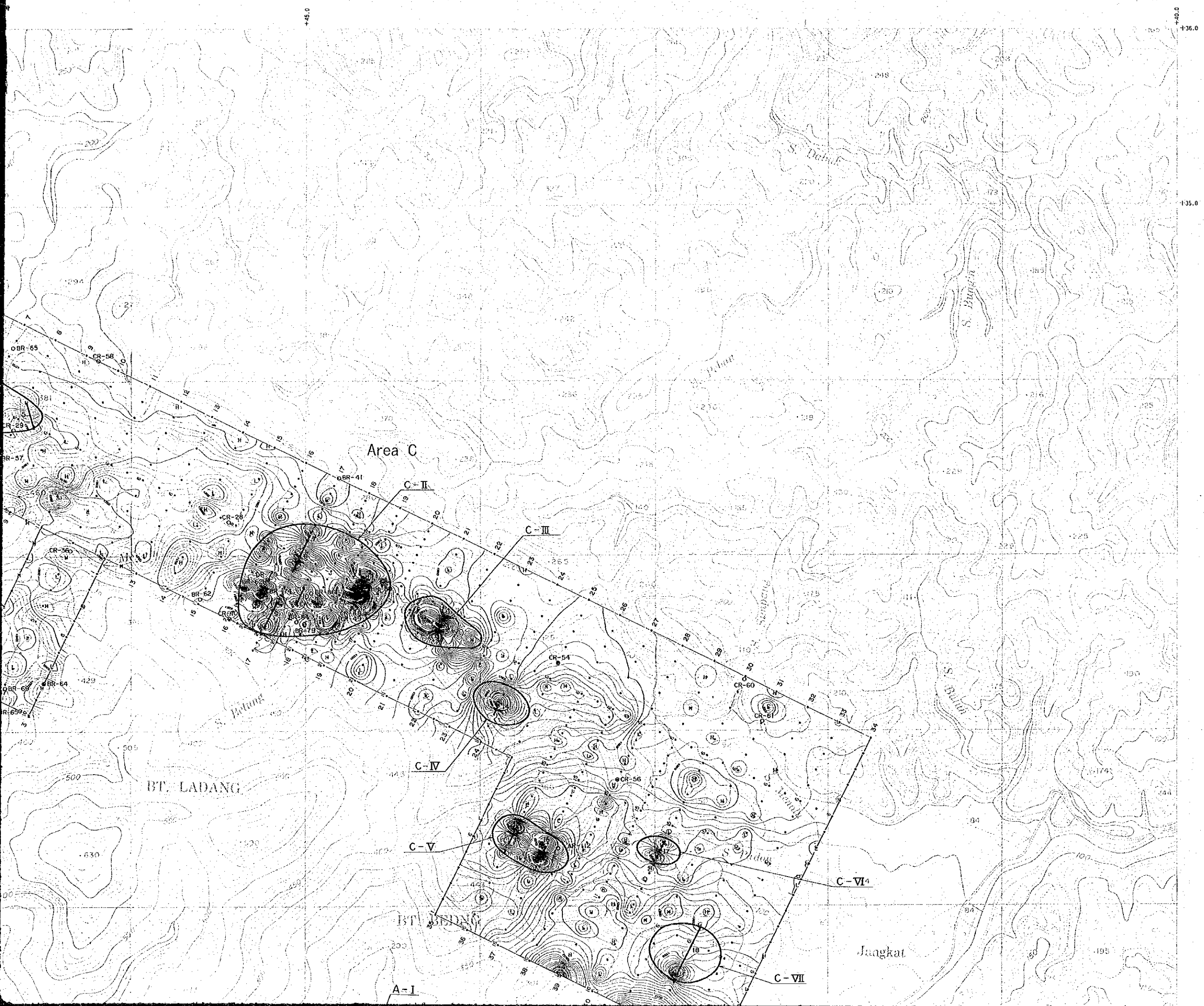
REPORT ON THE MINERAL EXPLORATION OF  
SOUTHERN SUMATERA AREA, THE REPUBLIC OF INDONESIA  
PHASE II

LOCATION MAP OF MAGNETIC ANOMALIES  
AND ROCK/ORE SAMPLES

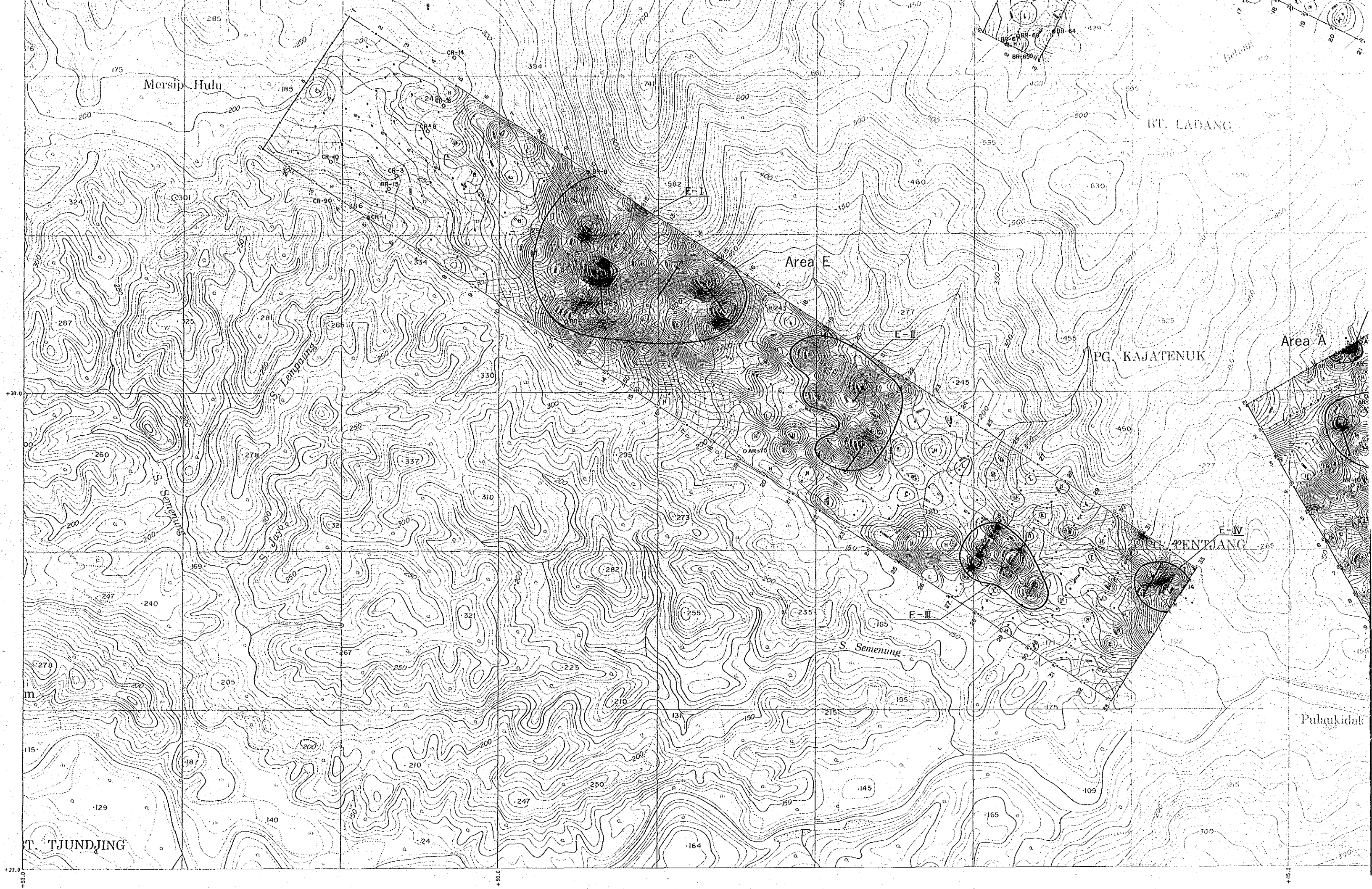


FEBRUARY 1967

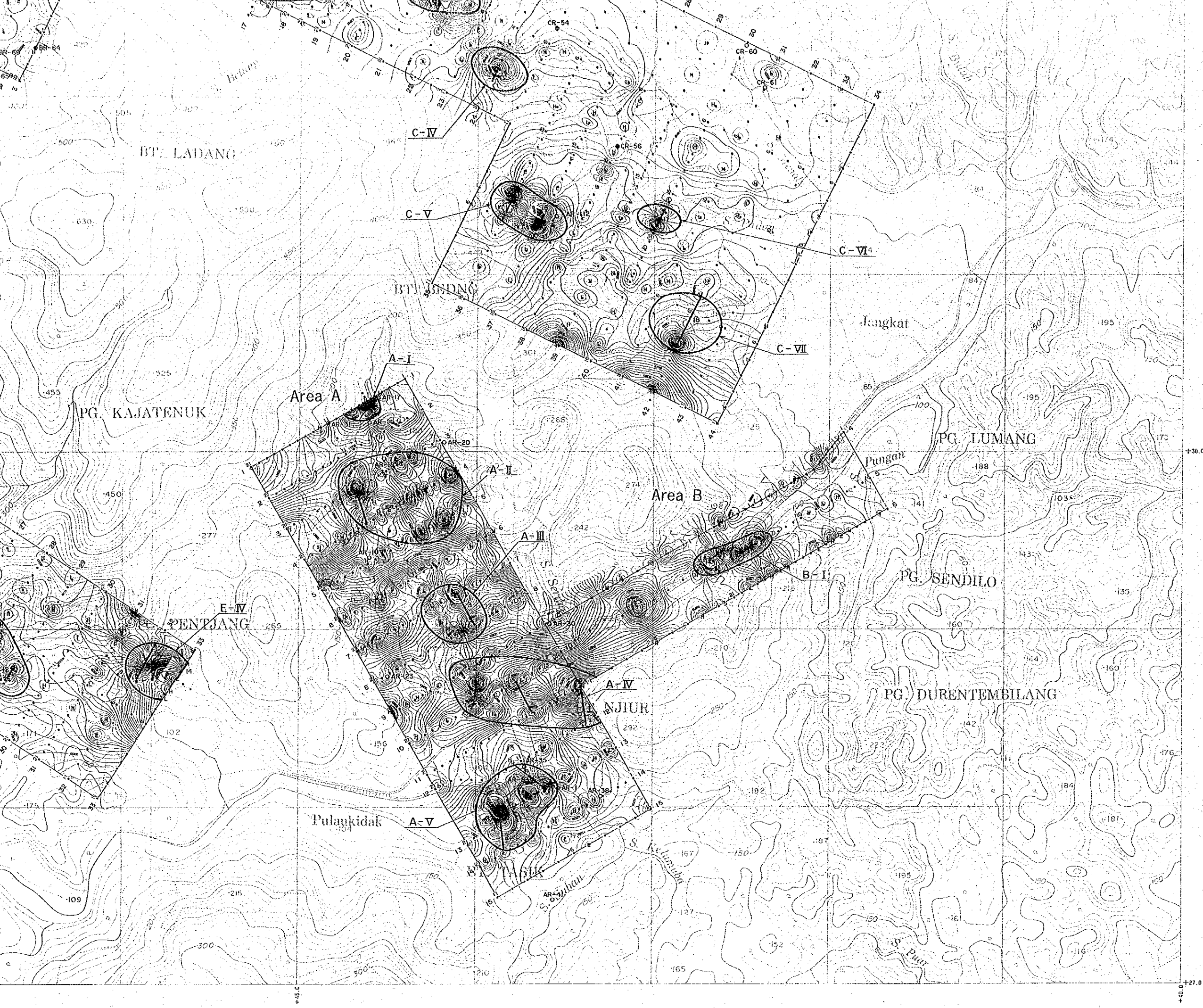
JAPAN INTERNATIONAL COOPERATION AGENCY  
METAL MINING AGENCY OF JAPAN



- LEGEND**
- Contours — 100nT  
— 20nT
  - Low enclosure L
  - High enclosure H
  - Total Magnetic Intensity 43,400nT
  - Inclination -25°
  - Declination 0°
  - Line Spacing 200m
  - Station Spacing 50m, 100m
  - C-V Magnetic Anomalous Area
  - Location of Magnetic Anomaly
  - BR-80 Location of Rock Sample



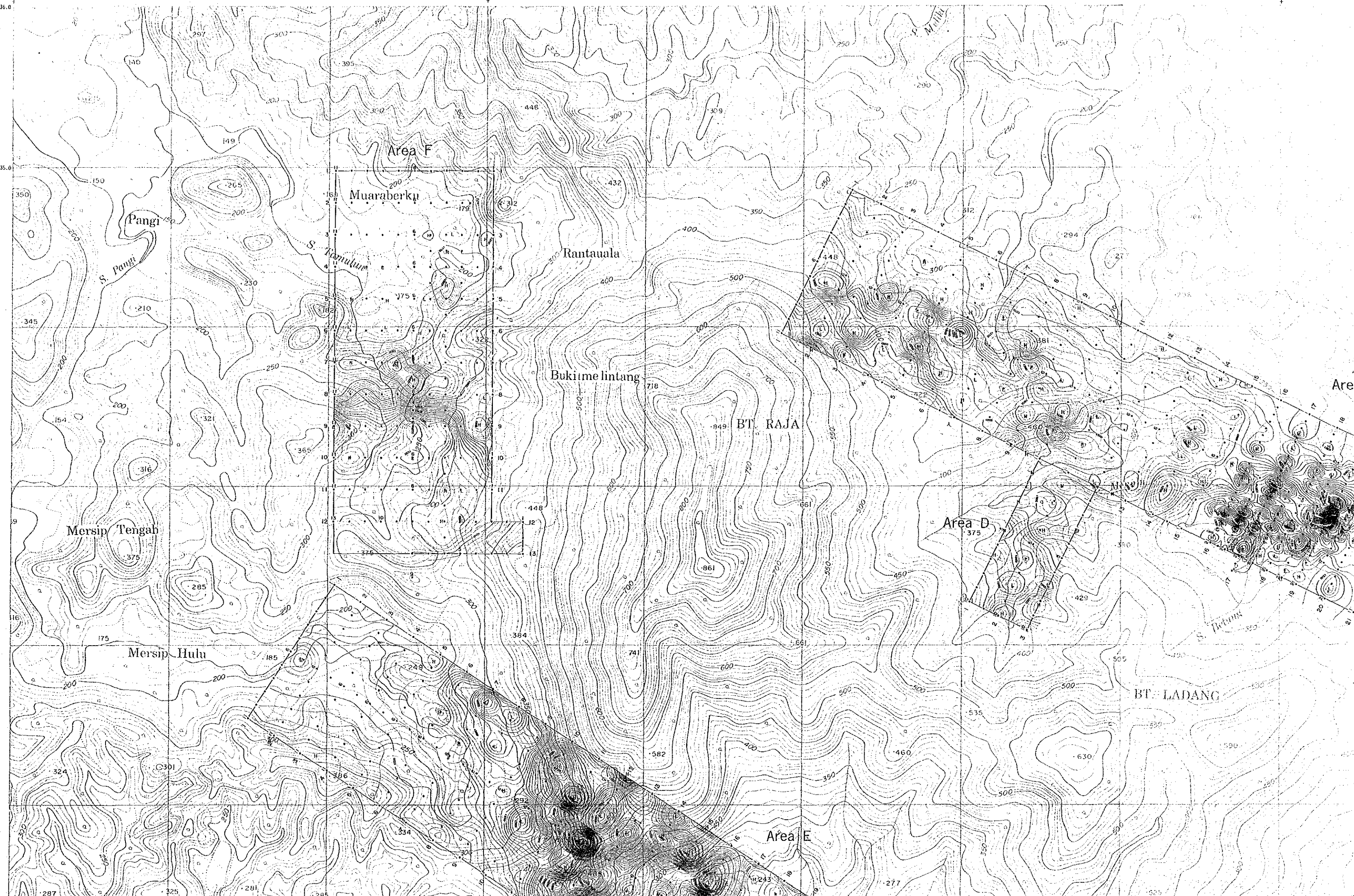
Scale 1:10,000



136.0

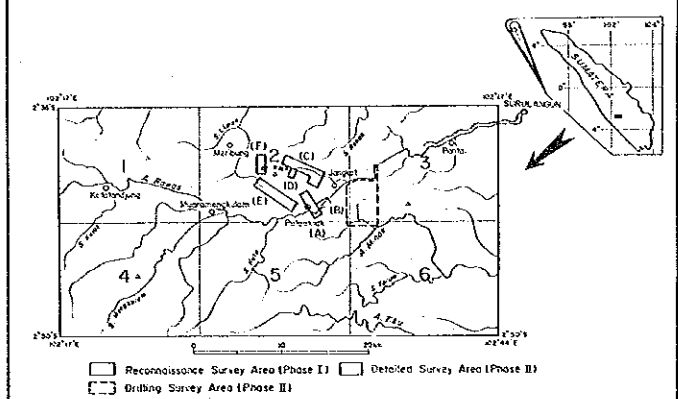
135.0

145.0



REPORT ON THE MINERAL EXPLORATION OF  
SOUTHERN SUMATERA AREA, THE REPUBLIC OF INDONESIA  
PHASE II

TOTAL MAGNETIC INTENSITY MAP

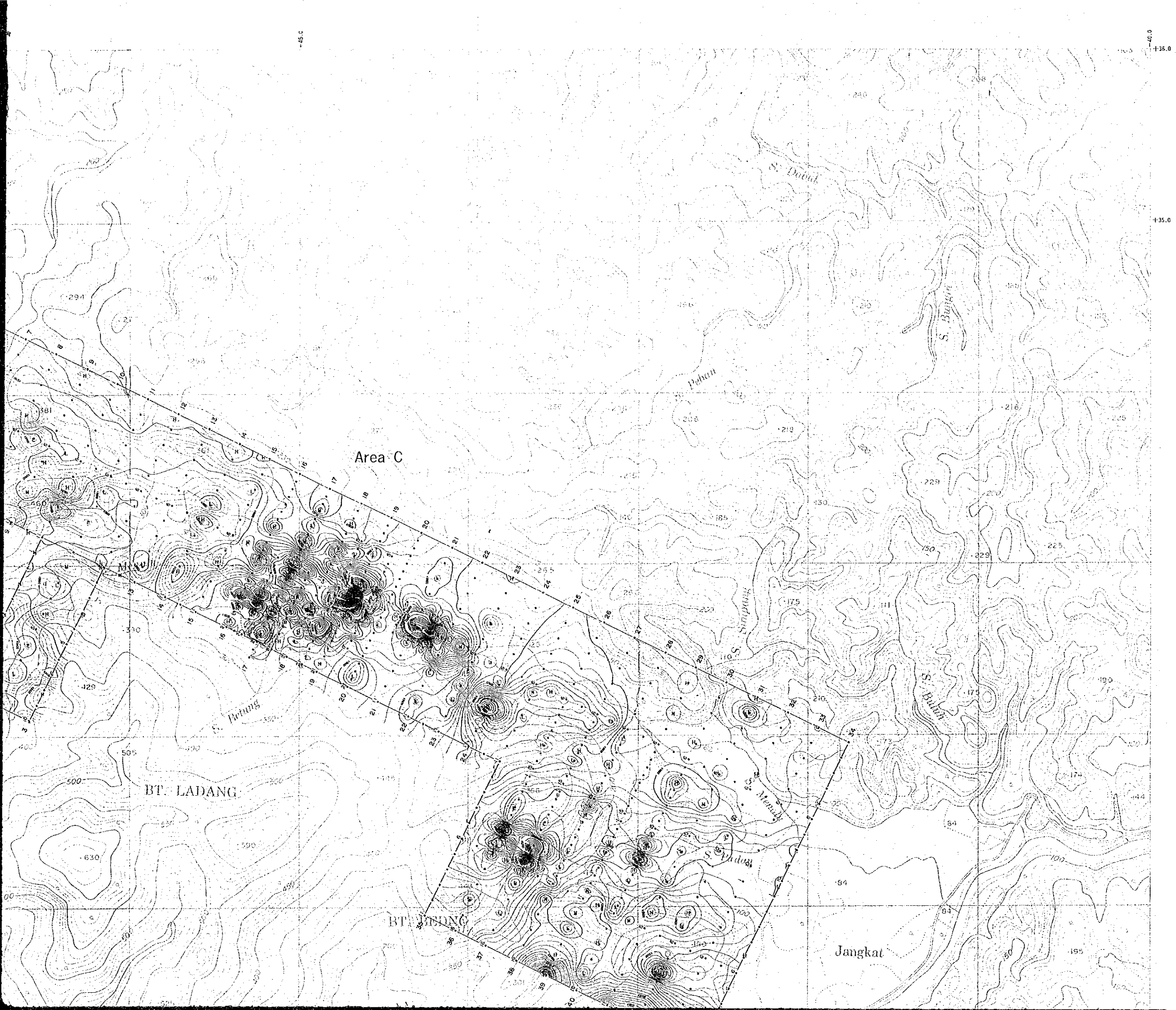


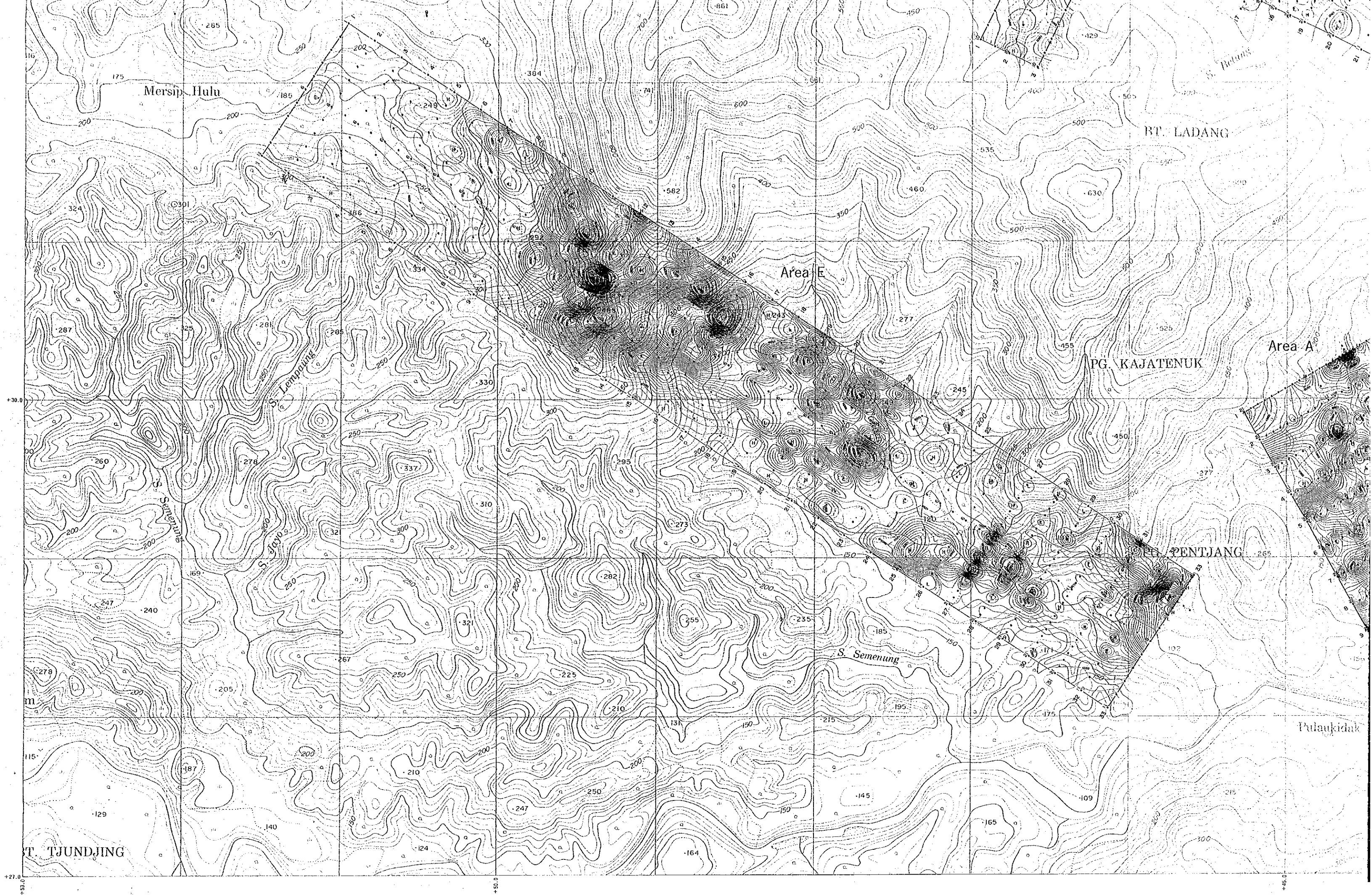
FEBRUARY - 1987

JAPAN INTERNATIONAL COOPERATION AGENCY  
METAL MINING AGENCY OF JAPAN

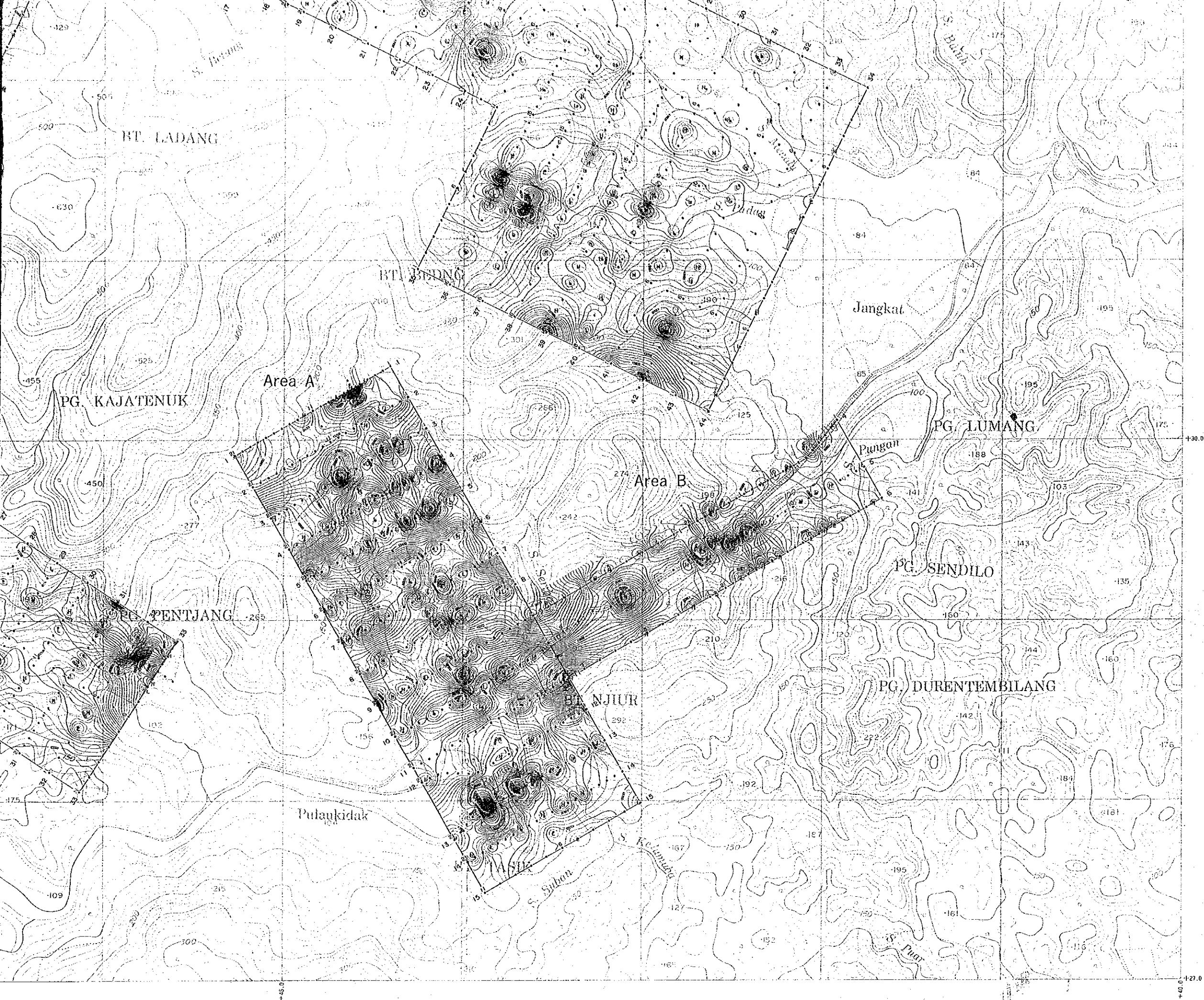
LEGEND

Contours	—	100nT
	- - -	20nT
Low enclosure	L	
High enclosure	H	
Total Magnetic Intensity		43,400 nT
Inclination		-25°
Declination		0°
Line Spacing		200m
Station Spacing		50 m, 100m





Scale 1:10,000



RT. LADANG

RT. JONGG

Jangkat

PG. KAJATENUK

Area A

PG. LUMANG

Area B

PG. SENDILO

PG. PENTJANG

RT. NJIUR

PG. DURENTEMBILANG

Pulaukidak

1:10,000