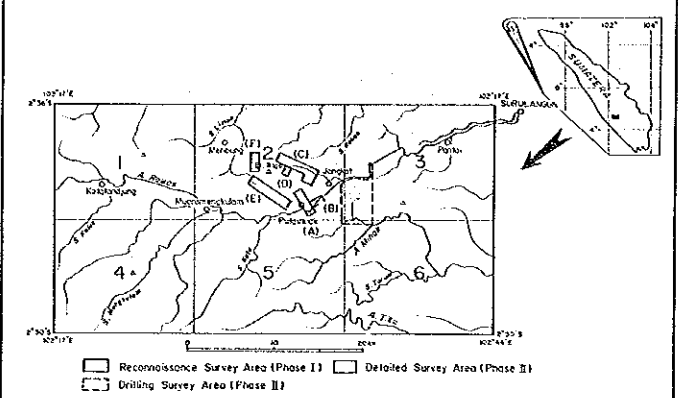




REPORT ON THE MINERAL EXPLORATION OF  
SOUTHERN SUMATERA AREA, THE REPUBLIC OF INDONESIA  
PHASE II  
GEOCHEMICAL ANOMALOUS AREAS IN BT. RAJA  
DETAILED SURVEY AREA (V-6)



Legend:  
 [ ] Reconnaissance Survey Area (Phase I)  
 [ ] Detailed Survey Area (Phase II)  
 [ ] Drilling Survey Area (Phase III)

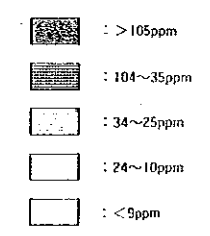
FEBRUARY · 1987

JAPAN INTERNATIONAL COOPERATION AGENCY  
METAL MINING AGENCY OF JAPAN

LEGEND

Sampling point of soil

Anomaly of Co



Statistic Values of Geochemical Analysis

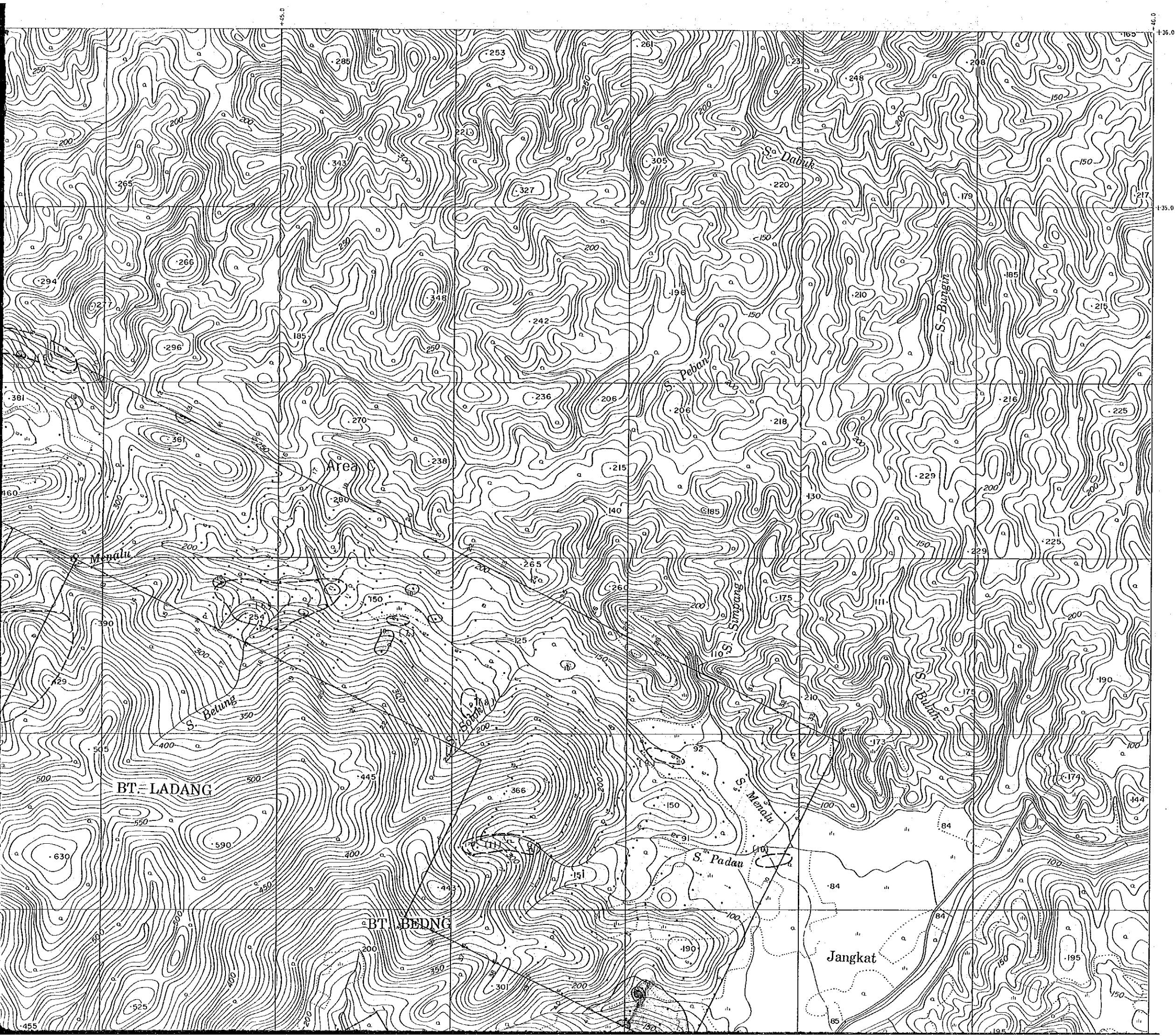
$M + \sigma$  : 13.32

$M + 2\sigma$  : 37.91

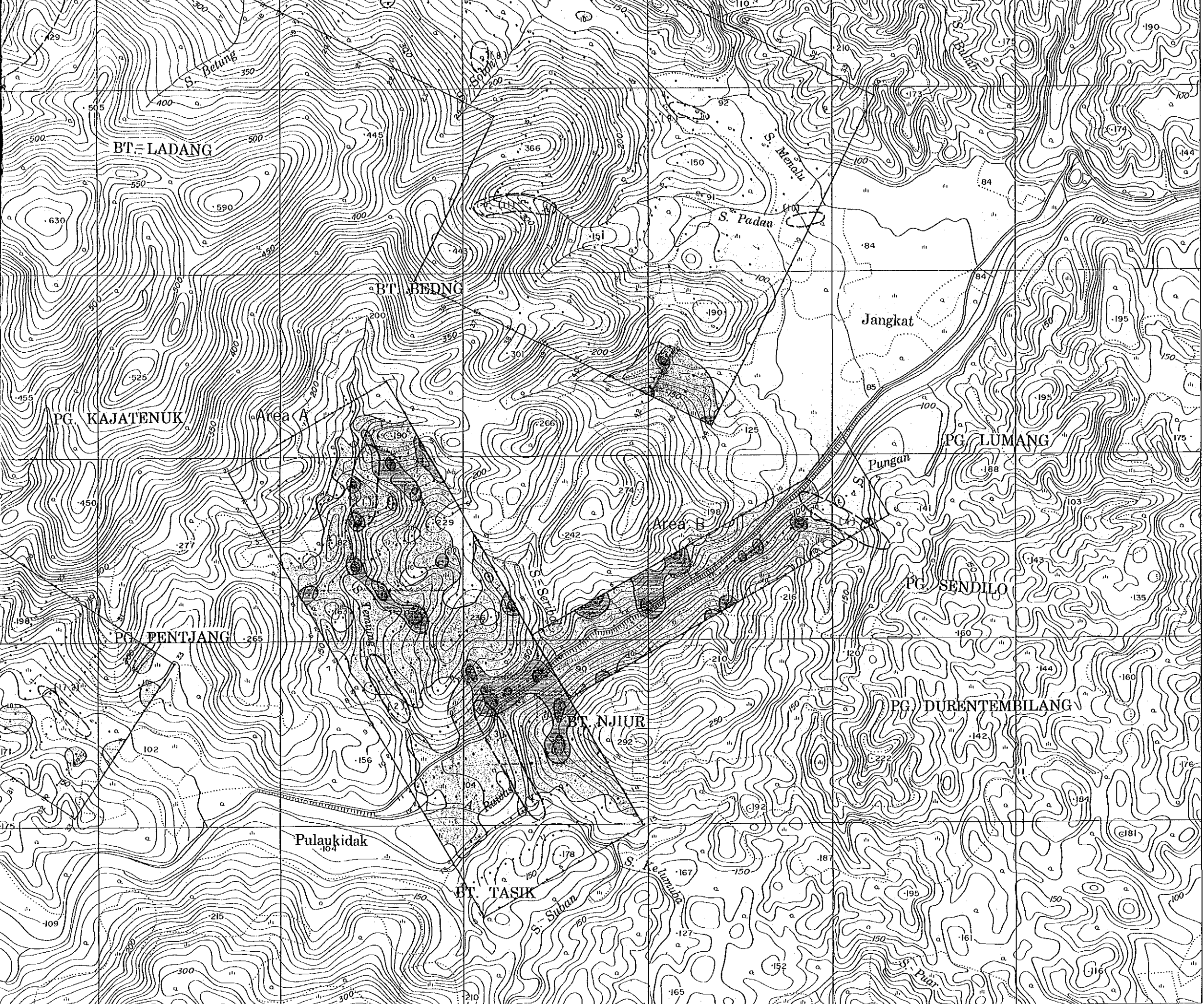
$M + 3\sigma$  : 107.86

Threshold value : 35ppm

(No) Mineral indication areas by geological survey







Statistic Values of Geochemical Analysis

$M + \sigma$  : 13.32

$M + 2\sigma$  : 37.91

$M + 3\sigma$  : 107.86

Threshold value : 35ppm

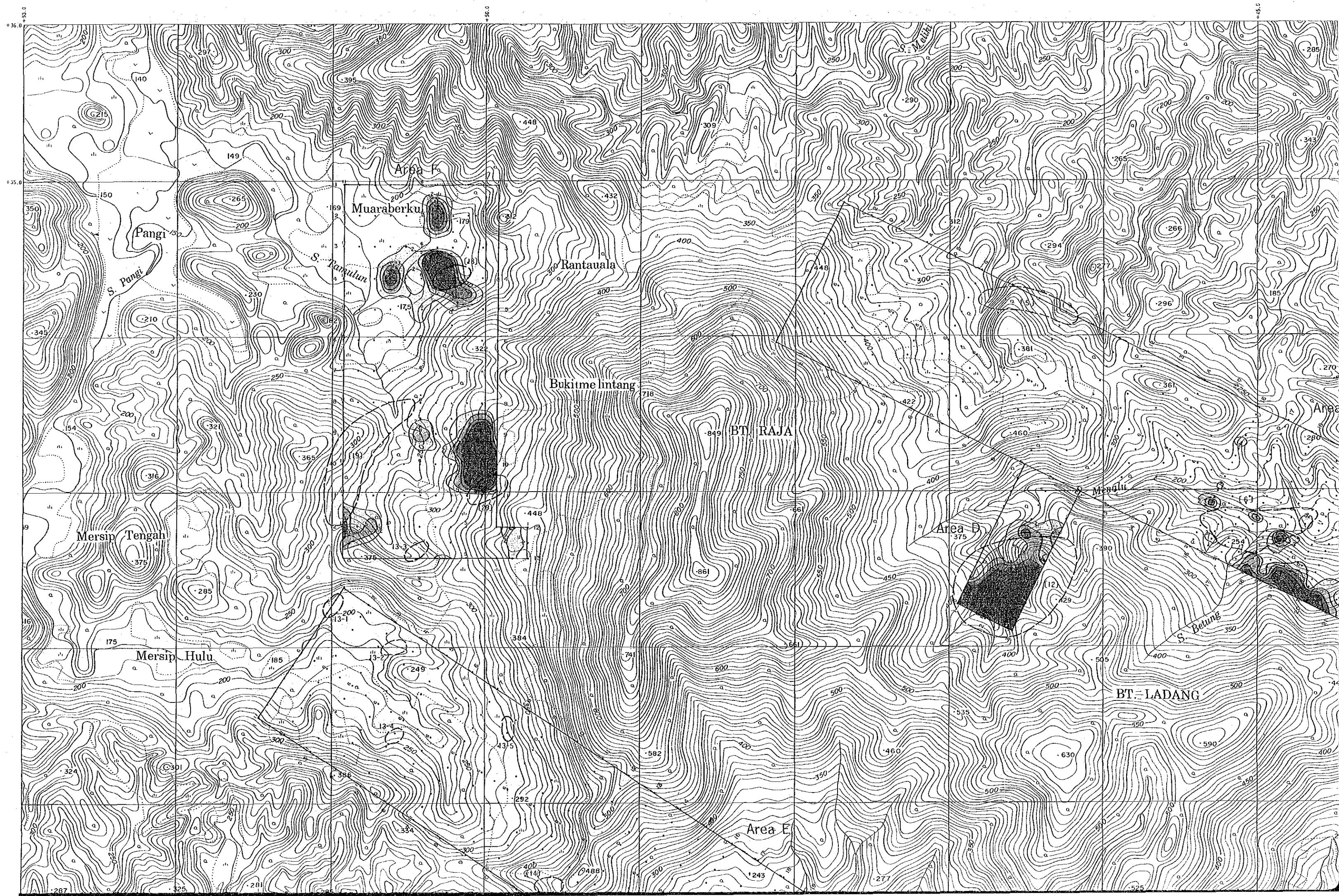
○ (No) Mineral indication areas by geological survey

1:10,000

+45.0

+27.0

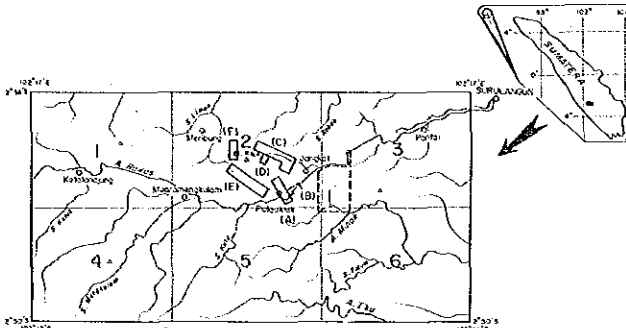
+30.0



PL. V-7

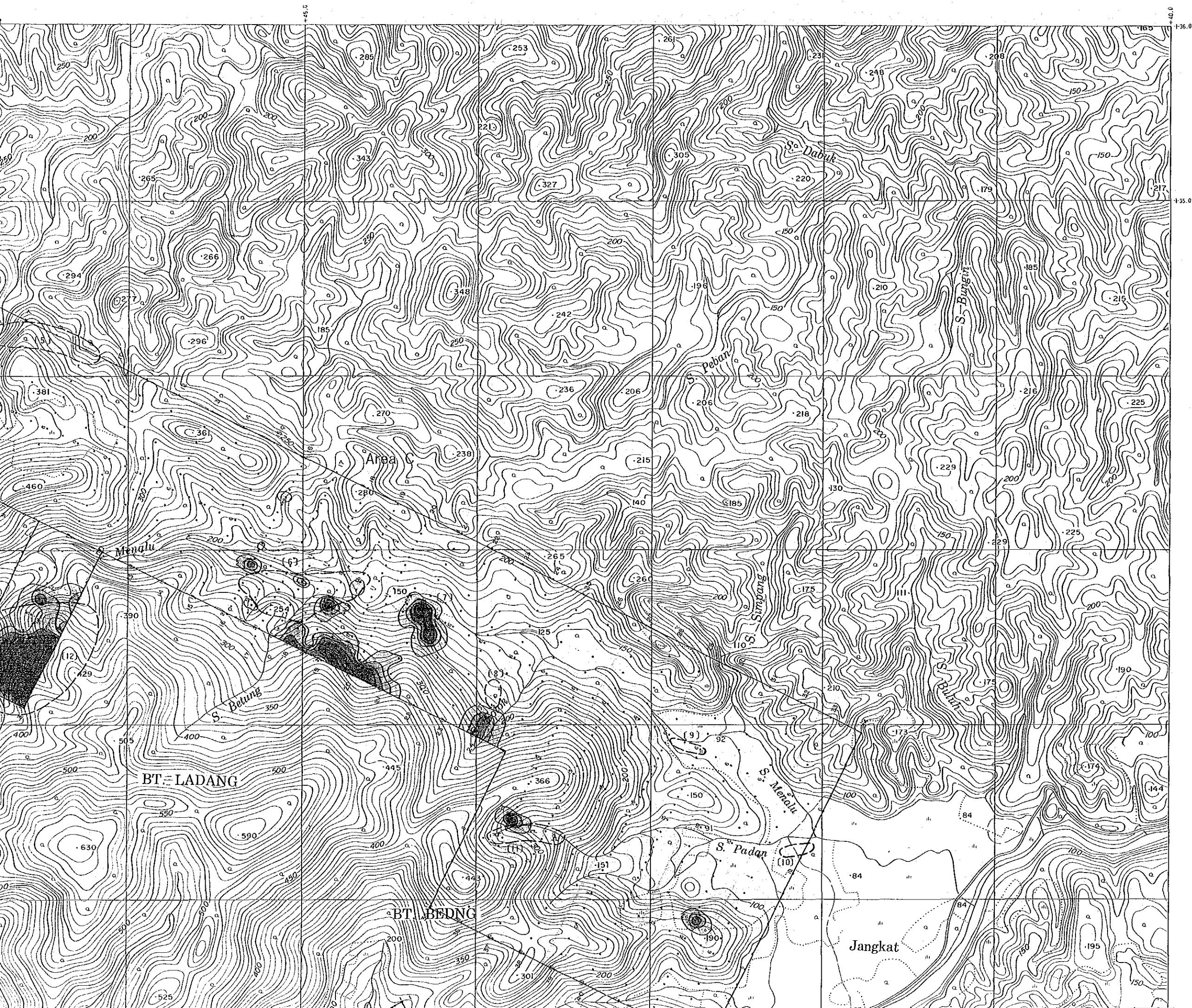
REPORT ON THE MINERAL EXPLORATION OF  
SOUTHERN SUMATRA AREA, THE REPUBLIC OF INDONESIA  
PHASE II

GEOCHEMICAL ANOMALOUS AREAS IN BT. RAJA  
DETAILED SURVEY AREA (V-7)



FEBRUARY - 1987






JAPAN INTERNATIONAL COOPERATION AGENCY  
METAL MINING AGENCY OF JAPAN



LEGEND

Sampling point of soil

Anomaly of Mo

-  : > 5.0ppm
-  : 4.90~4.00ppm
-  : 3.90~3.00ppm
-  : 2.90~2.00ppm
-  : < 1.90ppm


Statistic Values of Geochemical Analysis

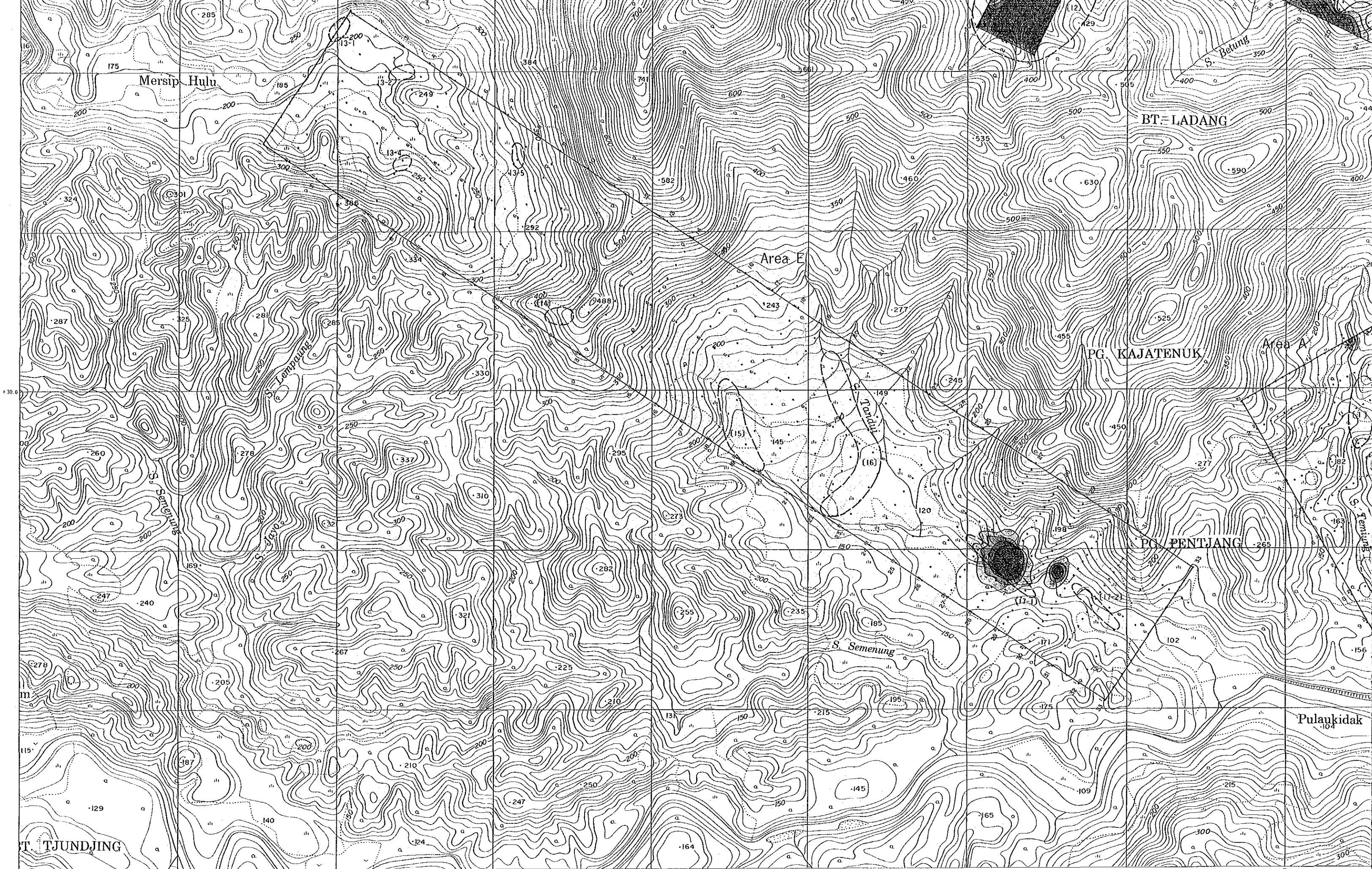
$M + 1\sigma$  : 1.790

$M + 2\sigma$  : 2.768

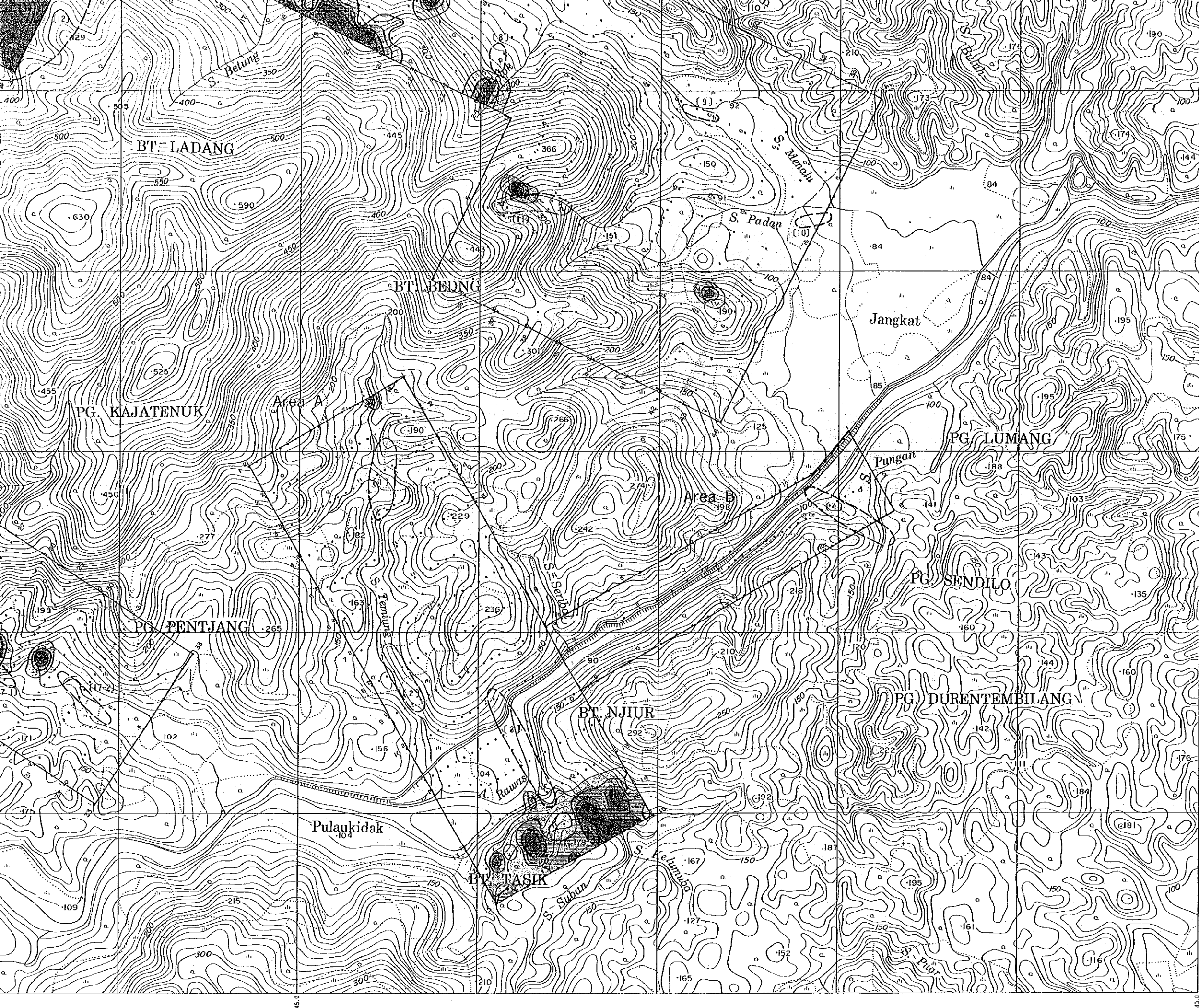
$M + 3\sigma$  : 4.281

Threshold value : 2.00ppm

 (No) Mineral indication areas by geological survey



Scale 1:10,000



Statistic Values of Geochemical Analysis

$M + \sigma$  : 1.790  
 $M + 2\sigma$  : 2.768  
 $M + 3\sigma$  : 4.281

Threshold value : 2.00ppm

(No) Mineral indication areas by geological survey

Scale 1:10,000

+45.0

+40.0