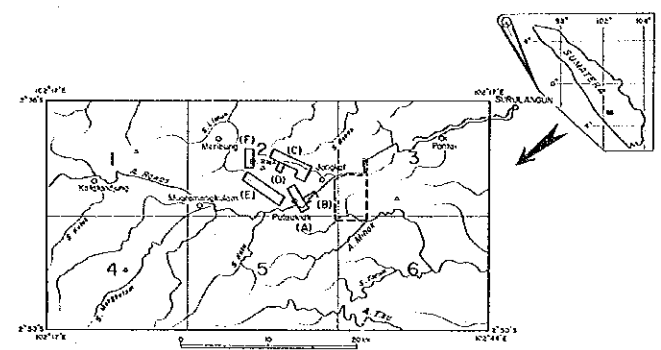




REPORT ON THE MINERAL EXPLORATION OF  
SOUTHERN SUMATERA AREA, THE REPUBLIC OF INDONESIA  
PHASE II

GEOCHEMICAL ANOMALOUS AREAS IN BT. RAJA  
DETAILED SURVEY AREA (V-4)



Reconnaissance Survey Area (Phase I) □ Detailed Survey Area (Phase II) □  
Drilling Survey Area (Phase III) □

FEBRUARY, 1987

JAPAN INTERNATIONAL COOPERATION AGENCY  
METAL MINING AGENCY OF JAPAN

LEGEND

Sampling point of soil

Anomaly of Pb

- : > 50ppm
- : 49~45ppm
- : 44~25ppm
- : 24~15ppm
- : < 14ppm

Statistic Values of Geochemical Analysis

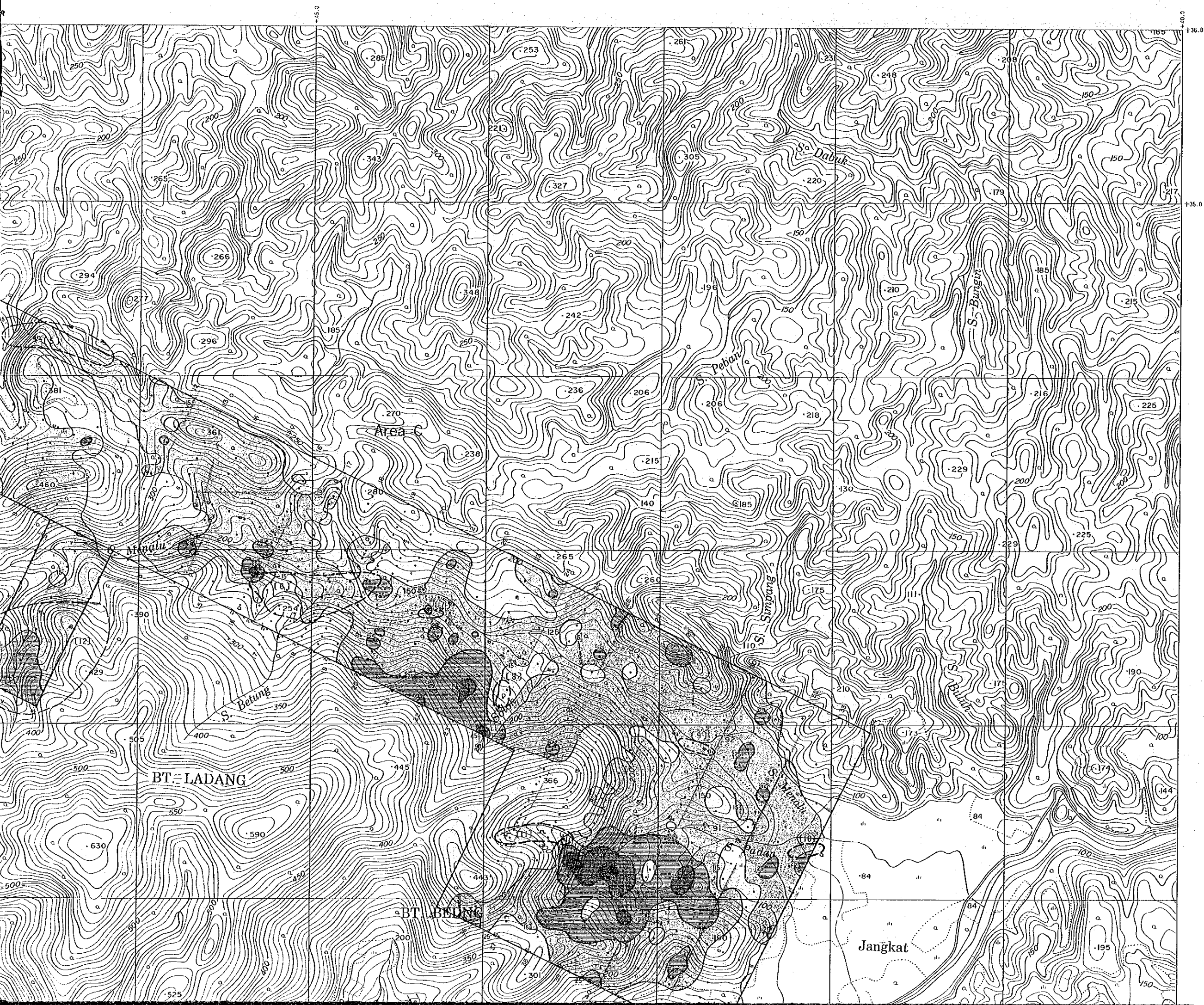
$M + \sigma$  : 26.85

$M + 2\sigma$  : 51.47

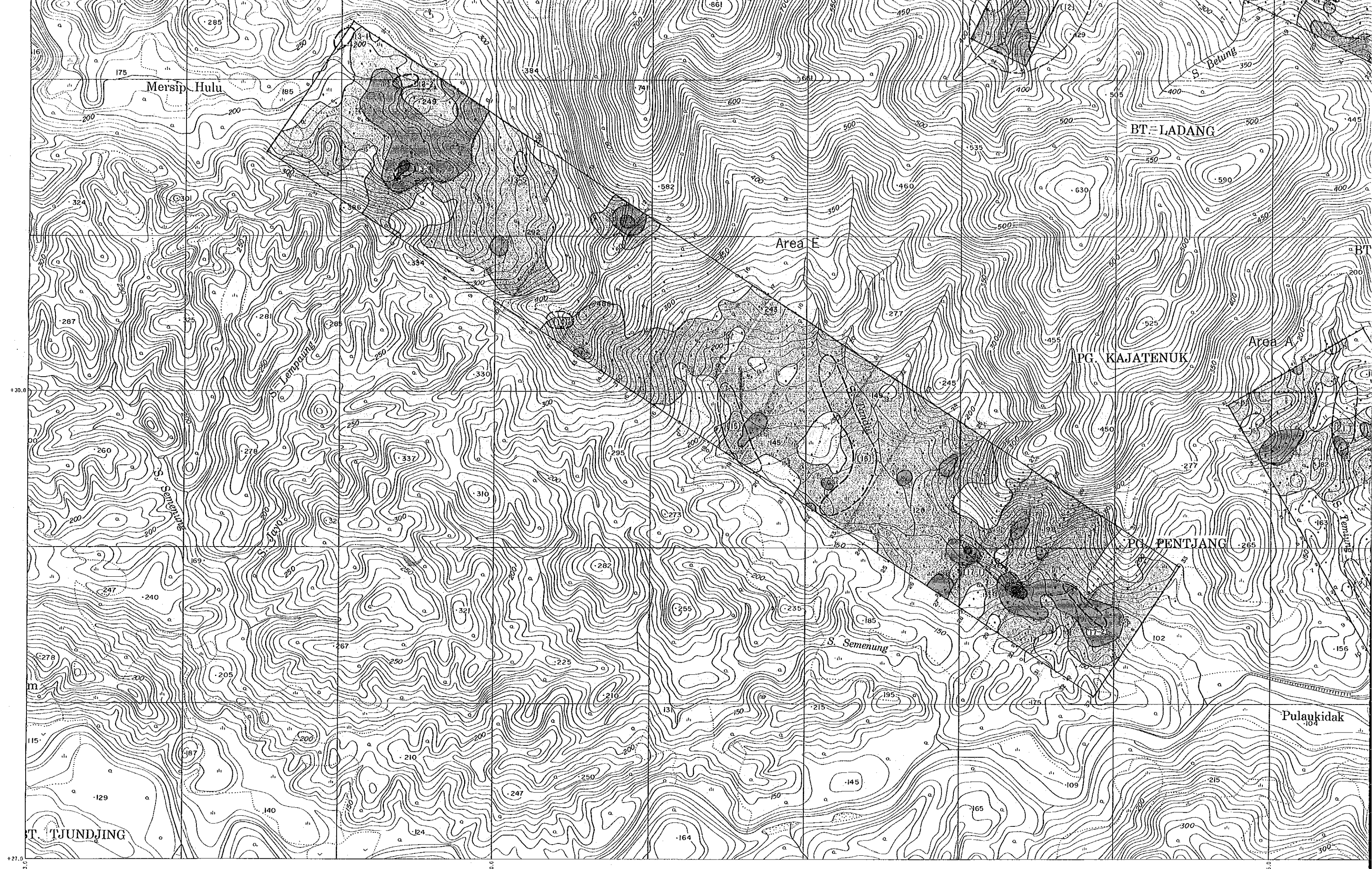
$M + 3\sigma$  : 98.69

Threshold value : 45ppm

(No) Mineral-indication areas by geological survey

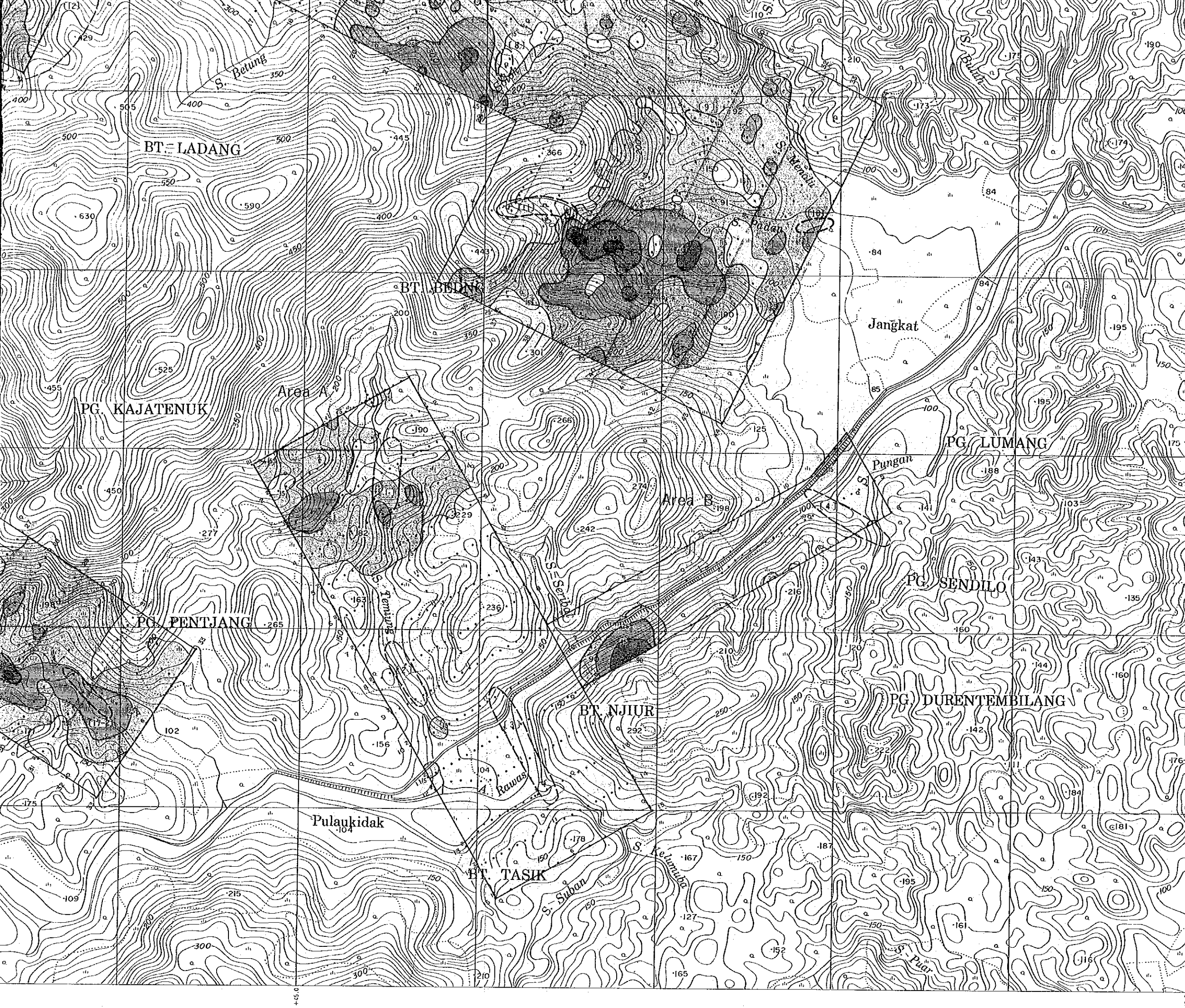






Scale 1:10,000





Statistic Values of Geochemical Analysis

$M + \sigma$  : 26.85

$M + 2\sigma$  : 51.47

$M + 3\sigma$  : 98.69

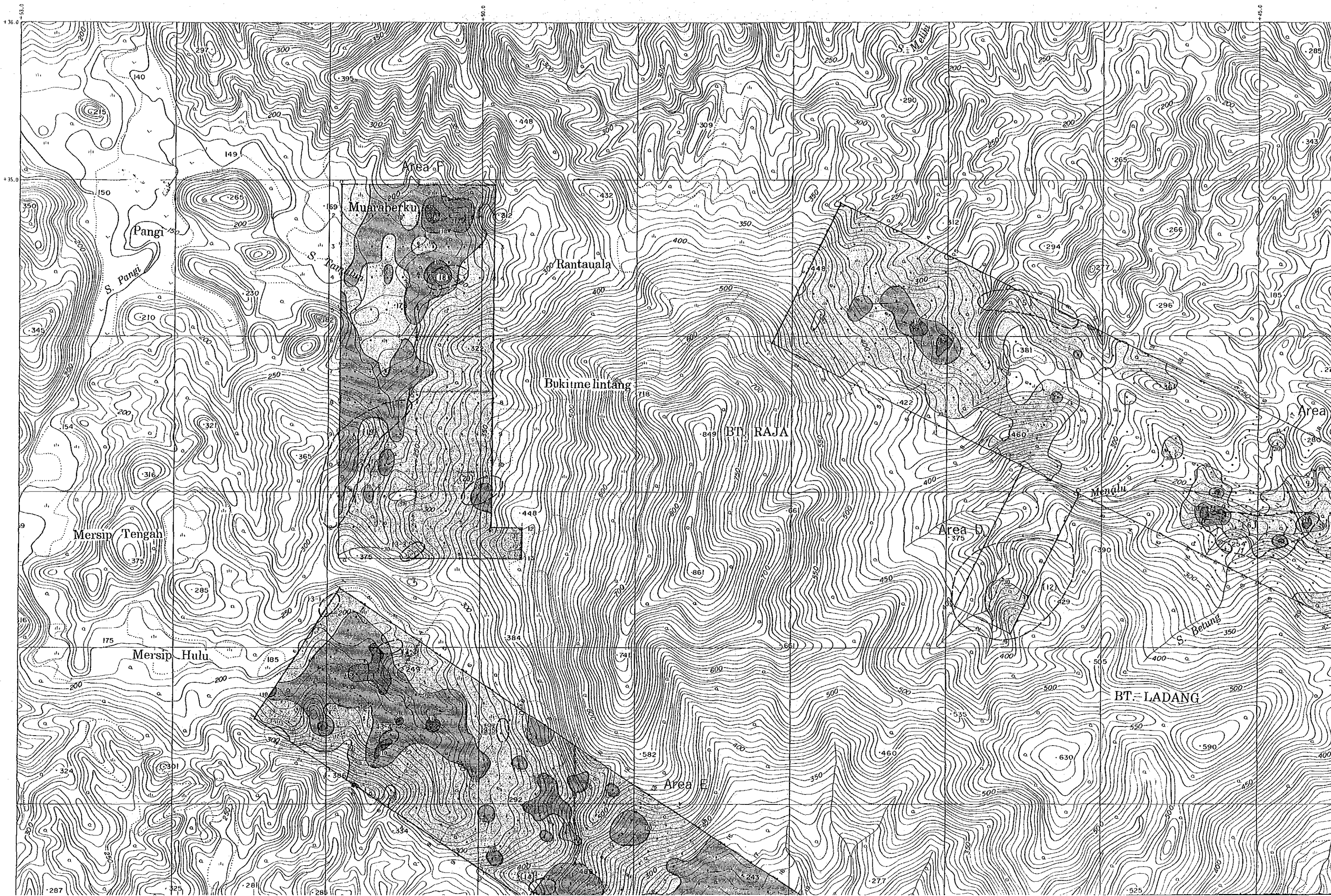
Threshold value : 45ppm

○ (No) Mineral indication areas by geological survey

Scale 1:10,000

+27.0

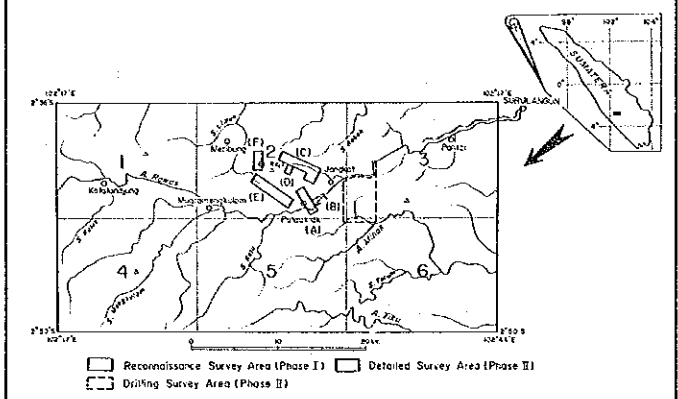






REPORT ON THE MINERAL EXPLORATION OF  
SOUTHERN SUMATERA AREA, THE REPUBLIC OF INDONESIA  
PHASE II

GEOCHEMICAL ANOMALOUS AREAS IN BT. RAJA  
DETAILED SURVEY AREA (V-5)



Reconnaissance Survey Area (Phase I) Detailed Survey Area (Phase II)  
Drilling Survey Area (Phase II)

FEBRUARY · 1987

JAPAN INTERNATIONAL COOPERATION AGENCY  
METAL MINING AGENCY OF JAPAN

LEGEND

Sampling point of soil

Anomaly of Zn

- : >200ppm
- : 199~110ppm
- : 109~70ppm
- : 69~30ppm
- : <29ppm

Statistic Values of Geochemical Analysis

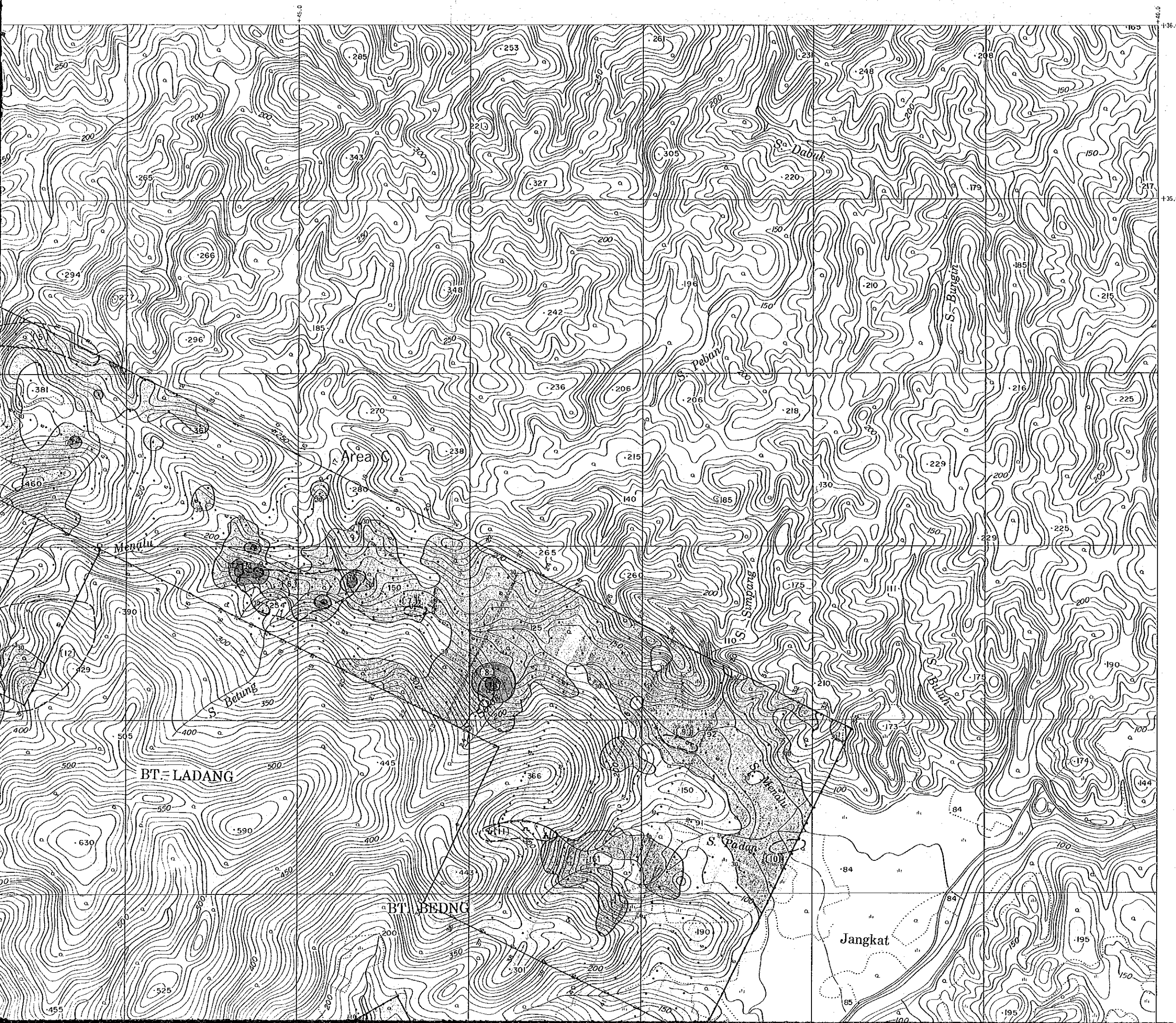
$M + \sigma$  : 70.87

$M + 2\sigma$  : 122.99

$M + 3\sigma$  : 213.41

Threshold value : 110ppm

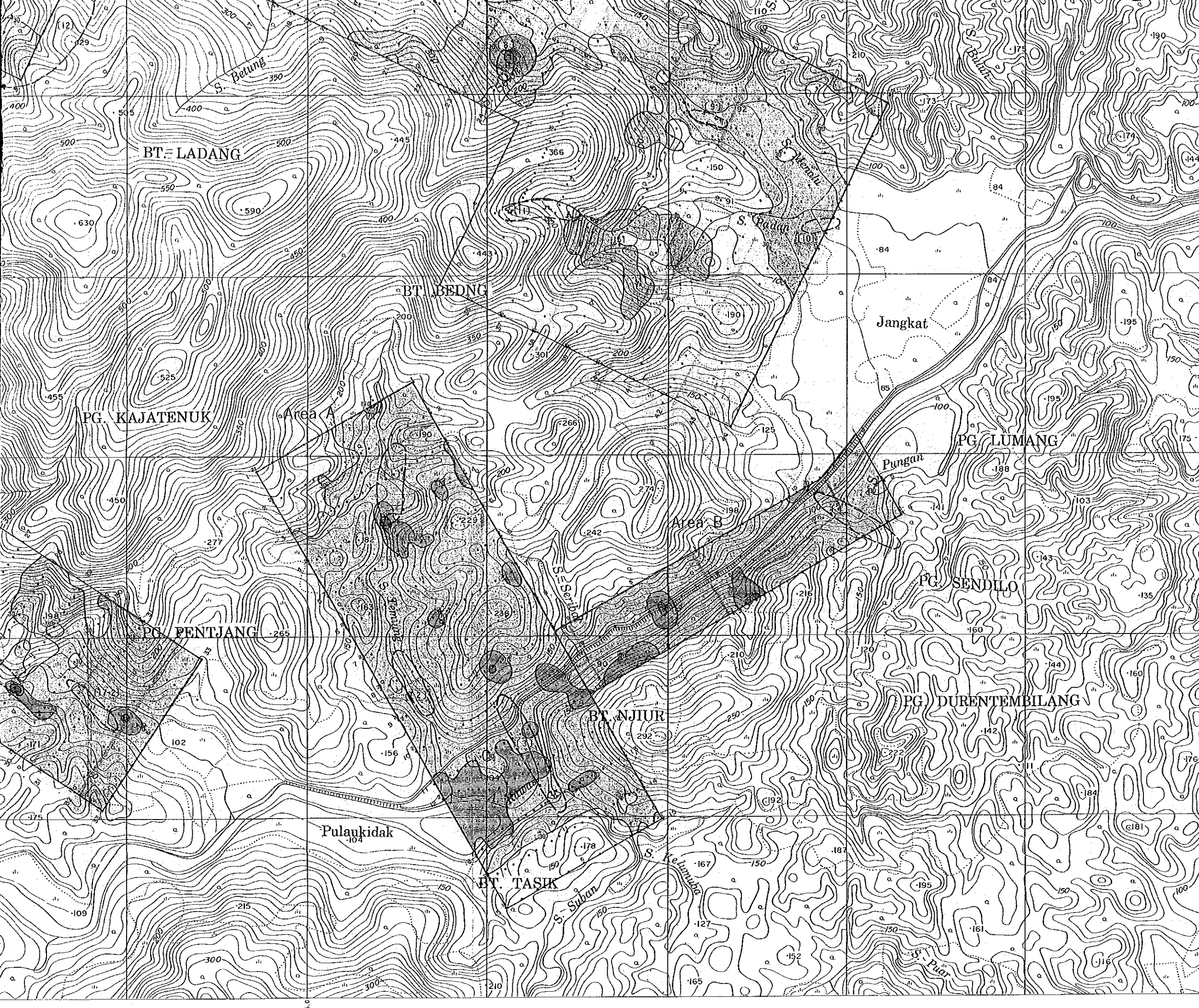
(No) Mineral indication areas by geological survey











□ : <29ppm

Statistic Values of Geochemical Analysis

M + 1σ : 70.87

M + 2σ : 122.93

M + 3σ : 213.41

Threshold value : 110ppm

○ (No) Mineral indication areas by geological survey

Scale 1:10,000