

Muaraberku

Rantauala

Bukitintang

BT. RAJA

Pangi

Mersip Tengah

Mersip Hulu

BT. LADANG

Area A

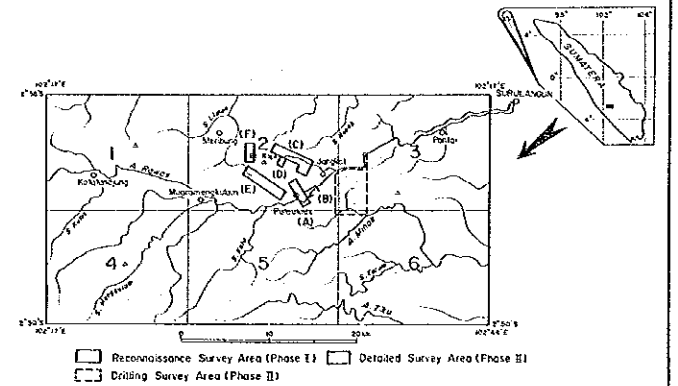
Area B

Area E

Area

REPORT ON THE MINERAL EXPLORATION OF
SOUTHERN SUMATERA AREA, THE REPUBLIC OF INDONESIA
PHASE II

GEOCHEMICAL ANOMALOUS AREAS IN BT. RAJA
DETAILED SURVEY AREA (V-2)



Reconnaissance Survey Area (Phase I) Detailed Survey Area (Phase II)
Drilling Survey Area (Phase III)

FEBRUARY, 1987

JAPAN INTERNATIONAL COOPERATION AGENCY
METAL MINING AGENCY OF JAPAN

LEGEND

Sampling point of soil

Anomaly of Ag

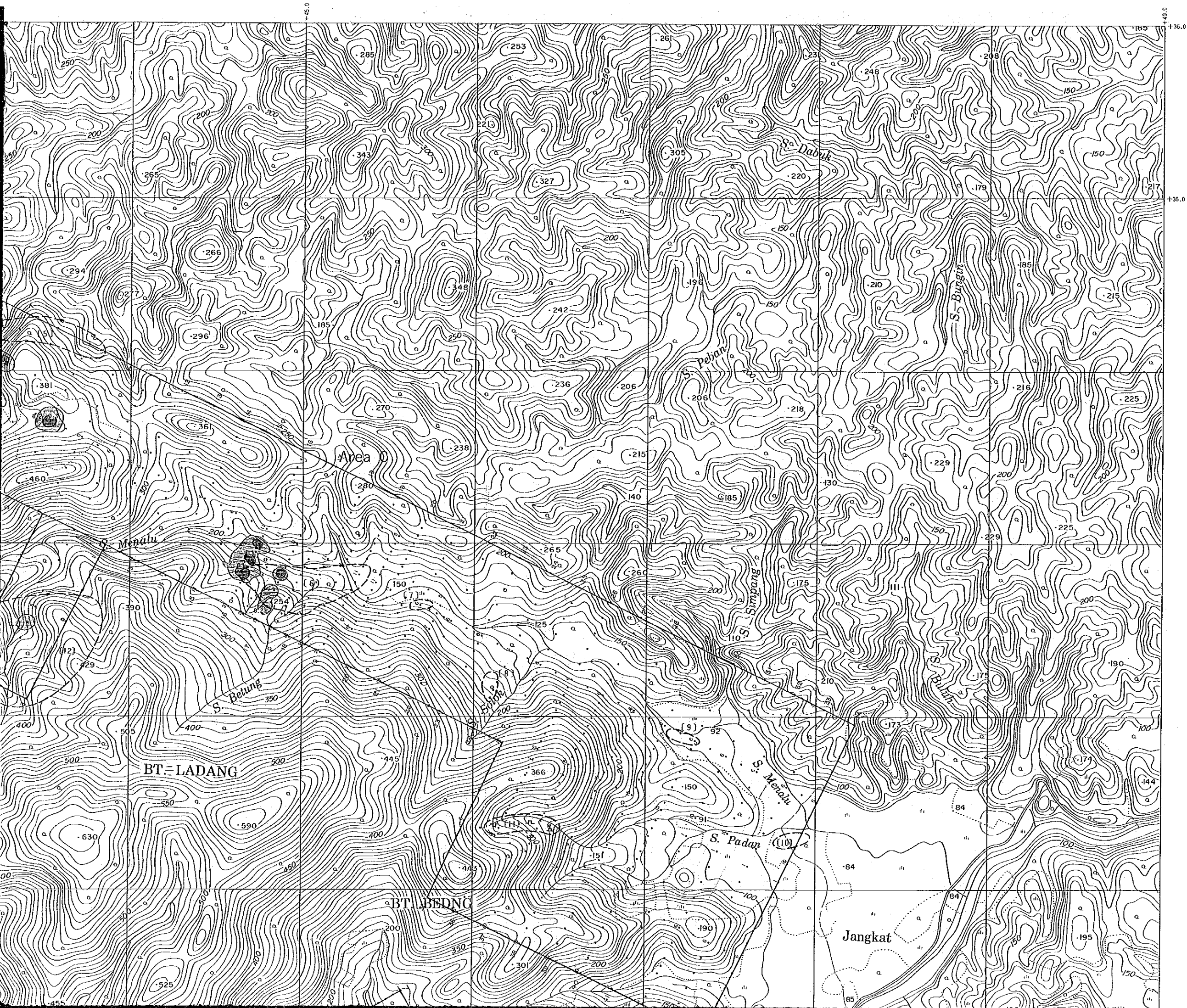
- : >0.50ppm
- : 0.49~0.30ppm
- : 0.29~0.20ppm
- : <0.19ppm

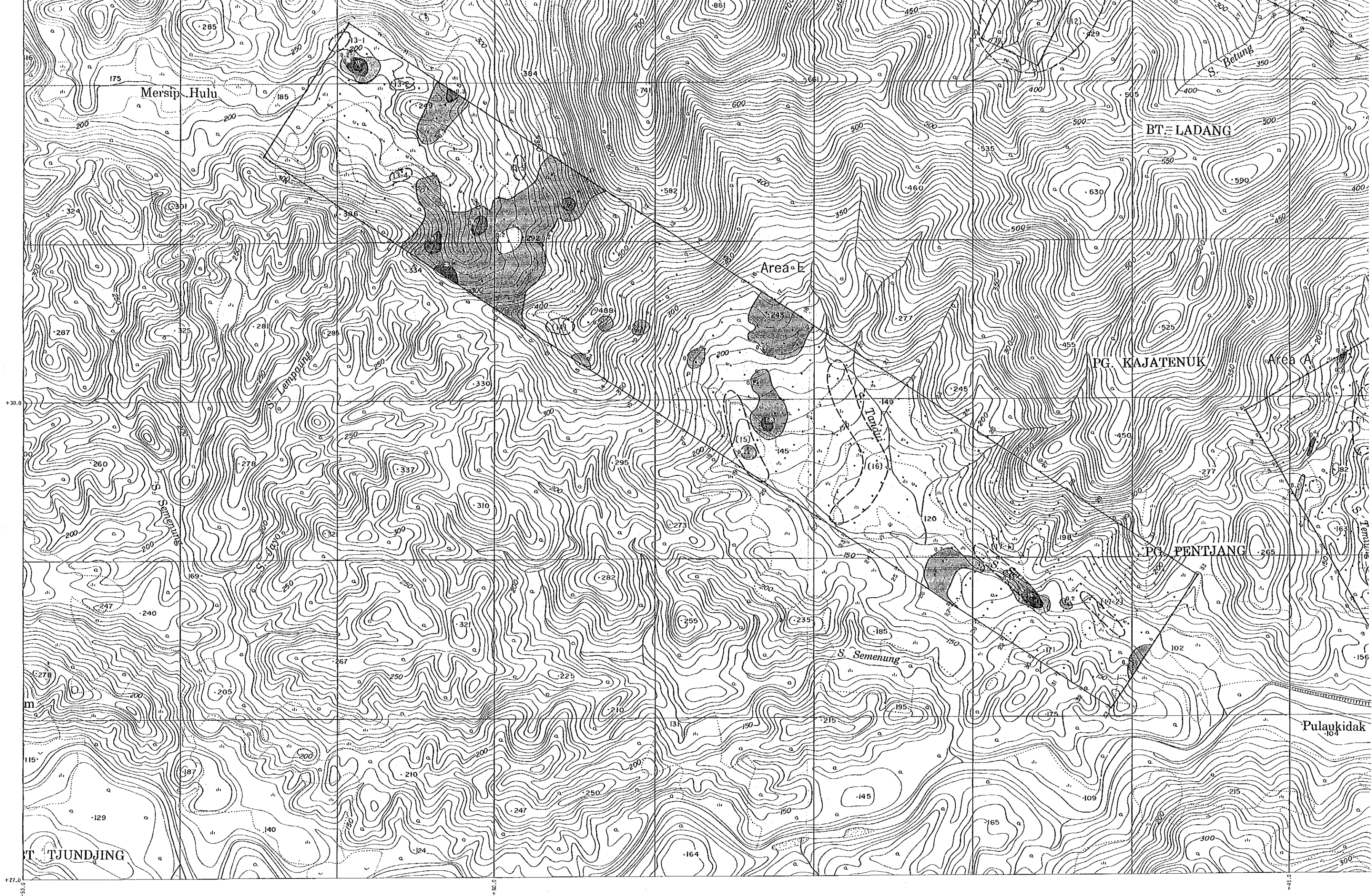
Statistic Values of Geochemical Analysis

- $M + \sigma$: 0.165
- $M + 2\sigma$: 0.233
- $M + 3\sigma$: 0.330

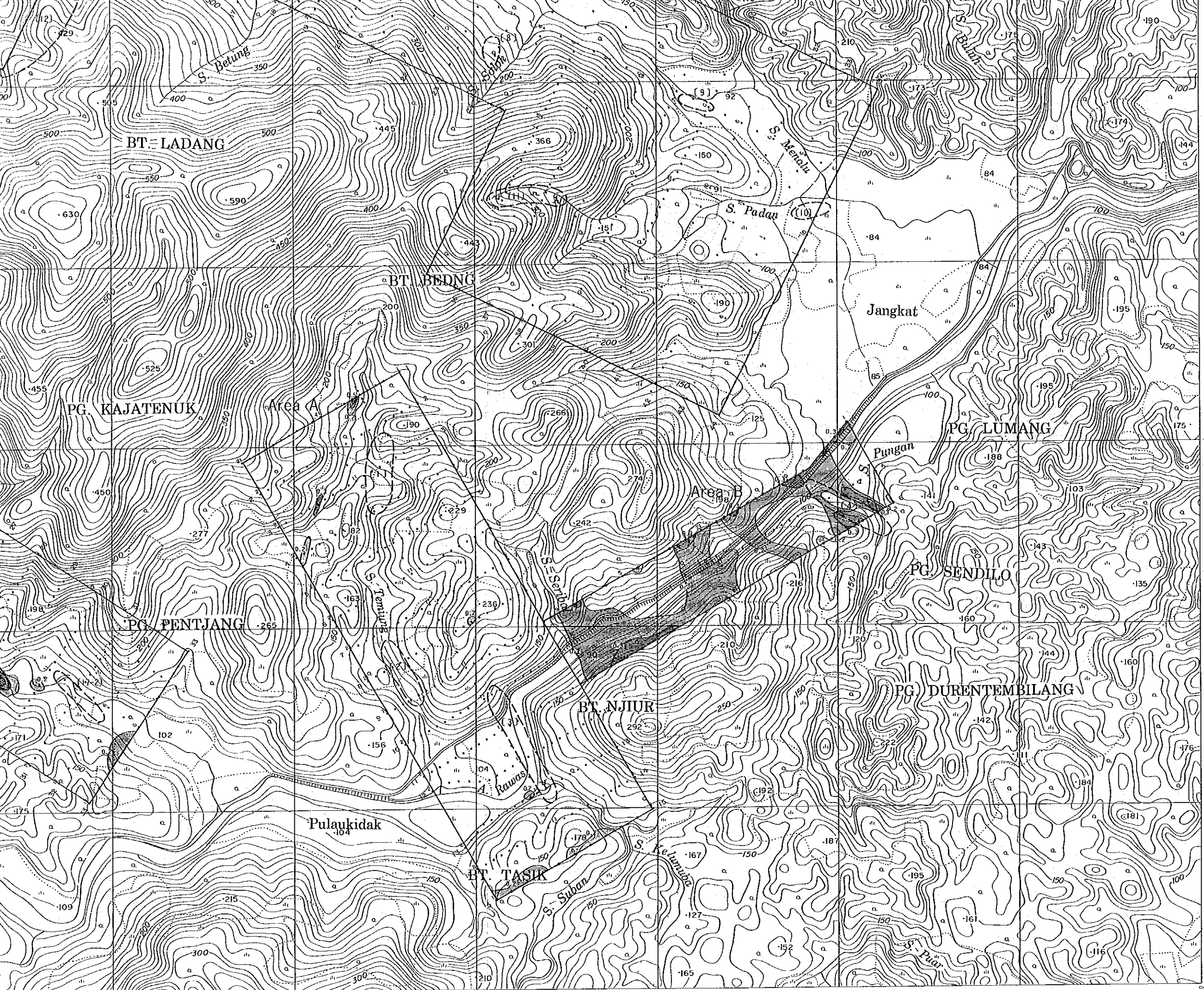
Threshold value : 0.20ppm

(No) Mineral indication areas by geological survey





Scale 1:10,000



Statistic Values of Geochemical Analysis

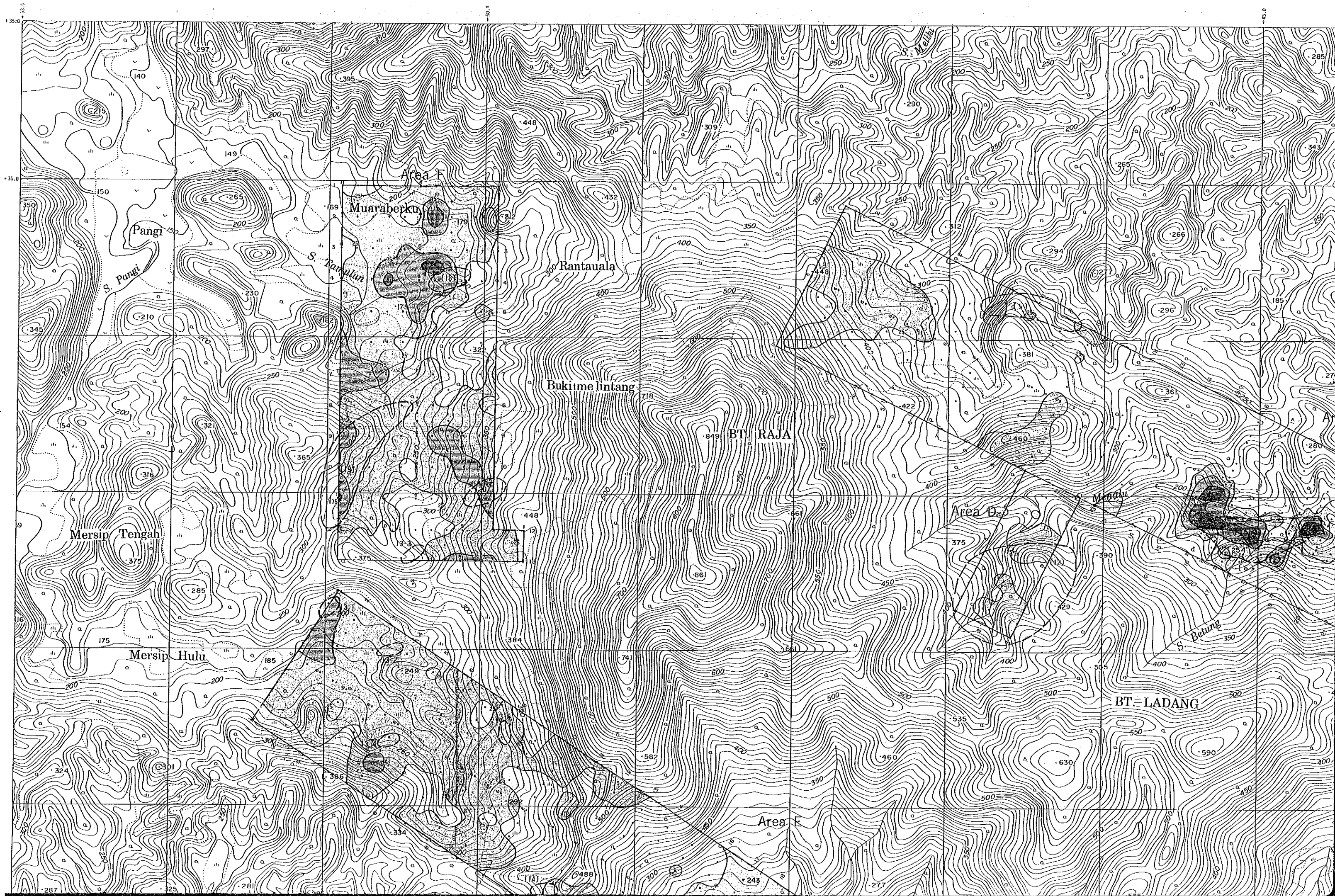
$M + \sigma$: 0.165

$M + 2\sigma$: 0.233

$M + 3\sigma$: 0.330

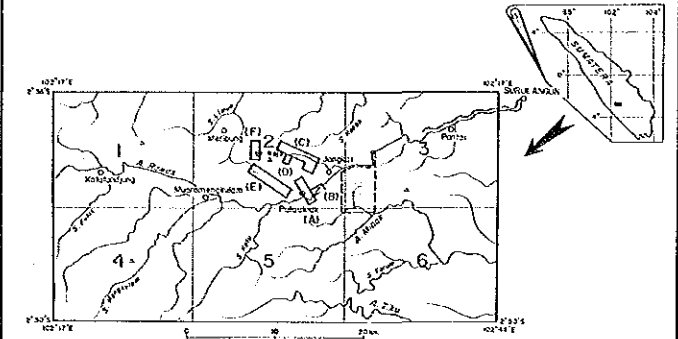
Threshold value : 0.20ppm

(No) Mineral indication areas by geological survey



REPORT ON THE MINERAL EXPLORATION OF
 SOUTHERN SUMATRA AREA, THE REPUBLIC OF INDONESIA
 PHASE II

GEOCHEMICAL ANOMALOUS AREAS IN BT. RAJA
 DETAILED SURVEY AREA (V-3)



FEBRUARY · 1987

JAPAN INTERNATIONAL COOPERATION AGENCY
 METAL MINING AGENCY OF JAPAN

LEGEND

Sampling point of soil

Anomaly of Cu

- : >250ppm
- : 249~175ppm
- : 174~75ppm
- : 74~25ppm
- : <24ppm

Statistic Values of Geochemical Analysis

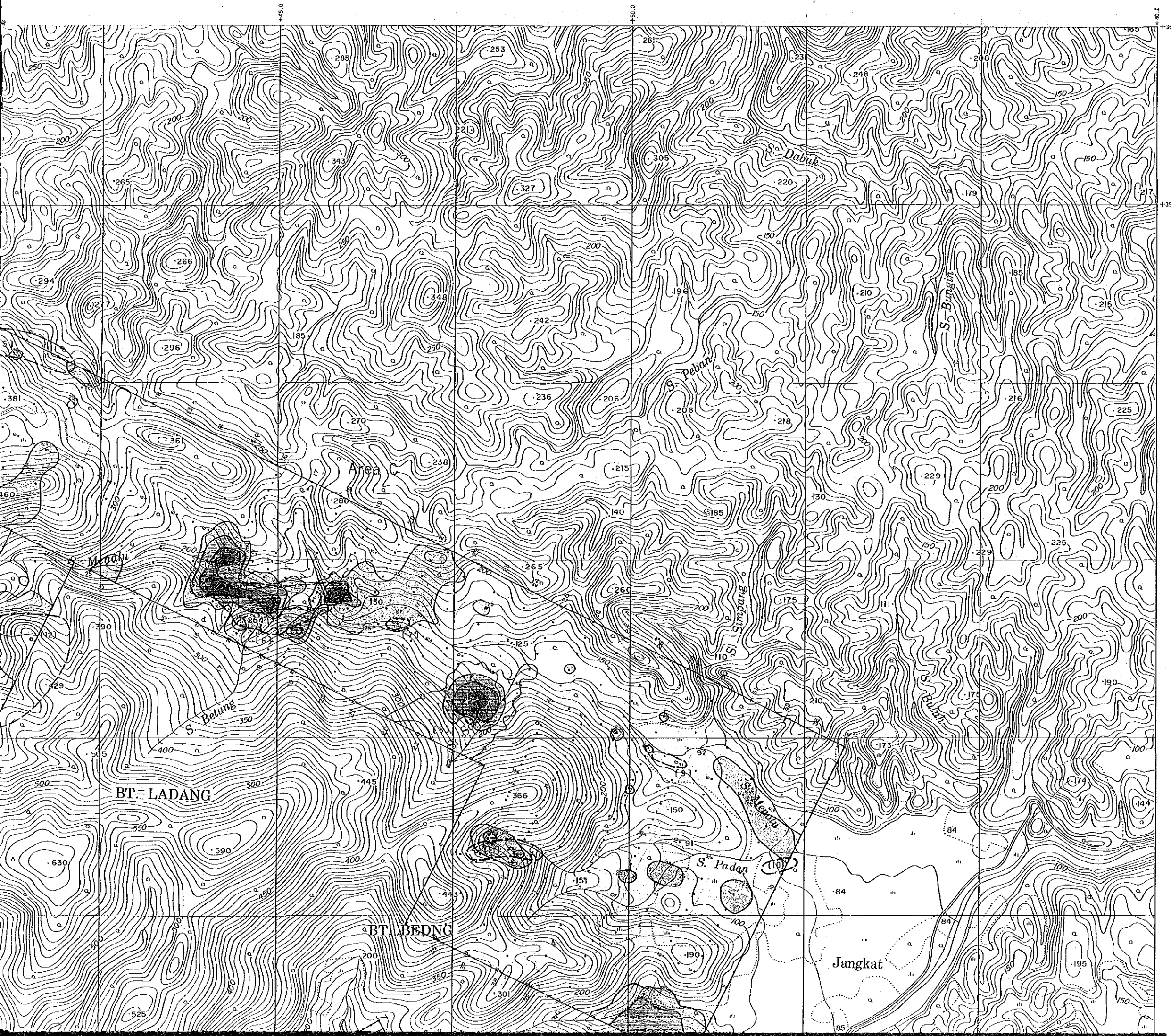
$M + \sigma$: 66.36

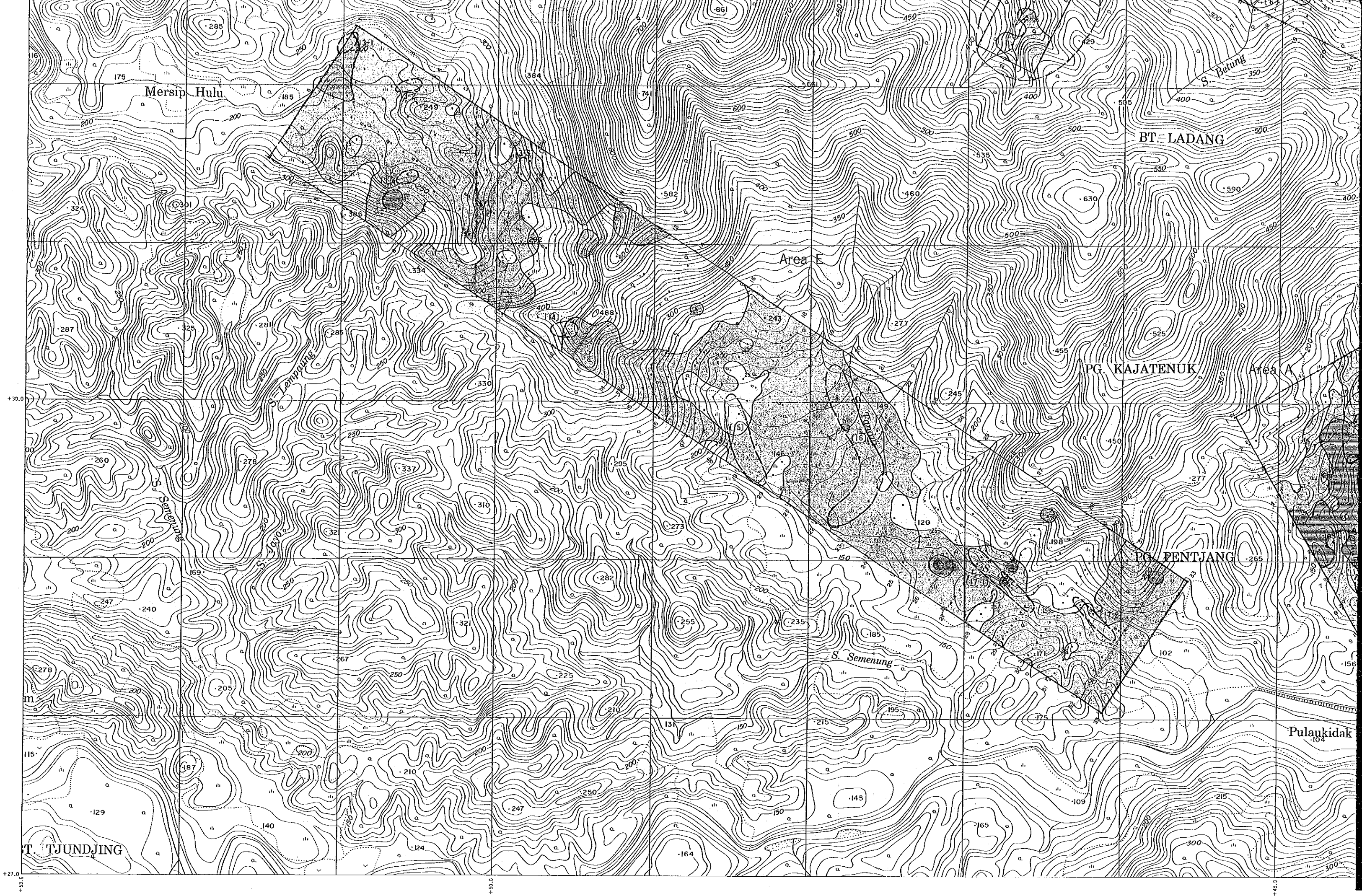
$M + 2\sigma$: 195.73

$M + 3\sigma$: 583.22

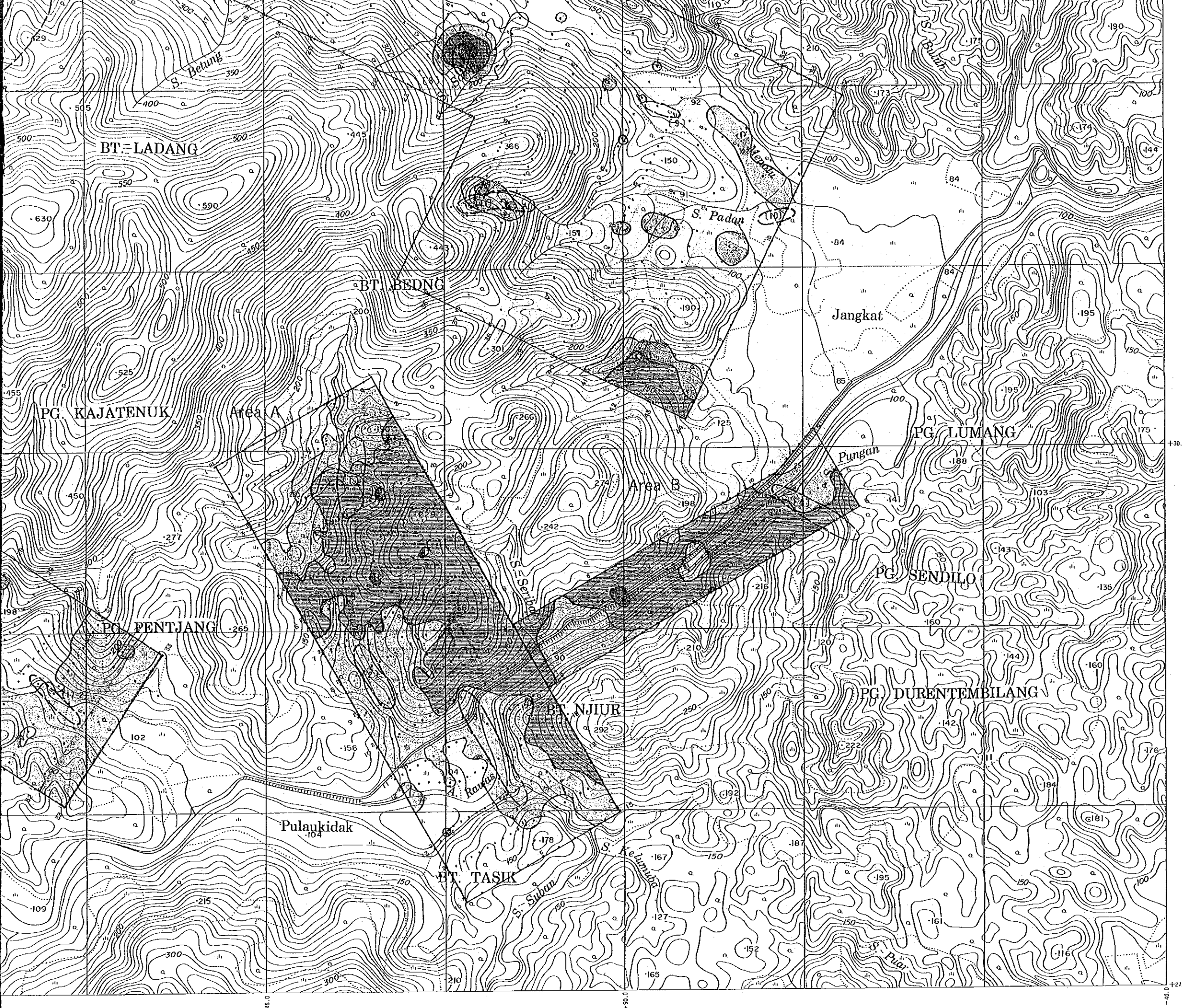
Threshold value : 150 ppm

(No) Mineral indication areas by geological survey





Scale 1:10,000



Statistic Values of Geochemical Analysis

$M + \sigma$: 66.36

$M + 2\sigma$: 196.73

$M + 3\sigma$: 583.22

Threshold value : 150 ppm

(No) Mineral indication areas by geological survey

10,000

+45.0

+50.0

+40.0

+30.0

+27.0