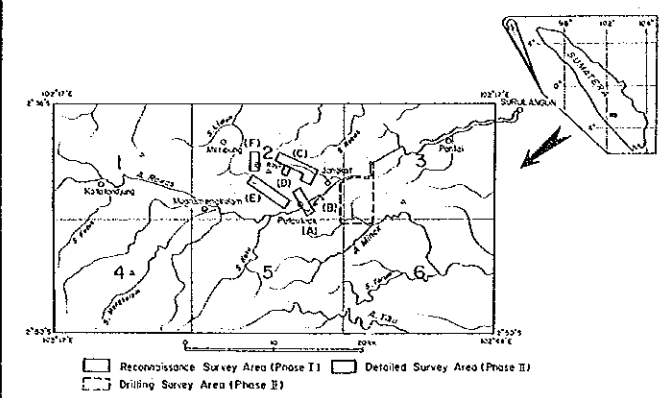


REPORT ON THE MINERAL EXPLORATION OF
SOUTHERN SUMATERA AREA, THE REPUBLIC OF INDONESIA
PHASE II
GEOCHEMICAL ANOMALOUS AREAS IN BT. RAJA
DETAILED SURVEY AREA (V-1)



Reconnaissance Survey Area (Phase I) Detailed Survey Area (Phase II)
Drilling Survey Area (Phase III)

FEBRUARY 1987

JAPAN INTERNATIONAL COOPERATION AGENCY
METAL MINING AGENCY OF JAPAN

LEGEND

Sampling point of soil

Anomaly of Au

- : >99ppb
- : 98~27ppb
- : 26~9ppb
- : 8~3ppb
- : <2ppb

Statistic Values of Geochemical Analysis

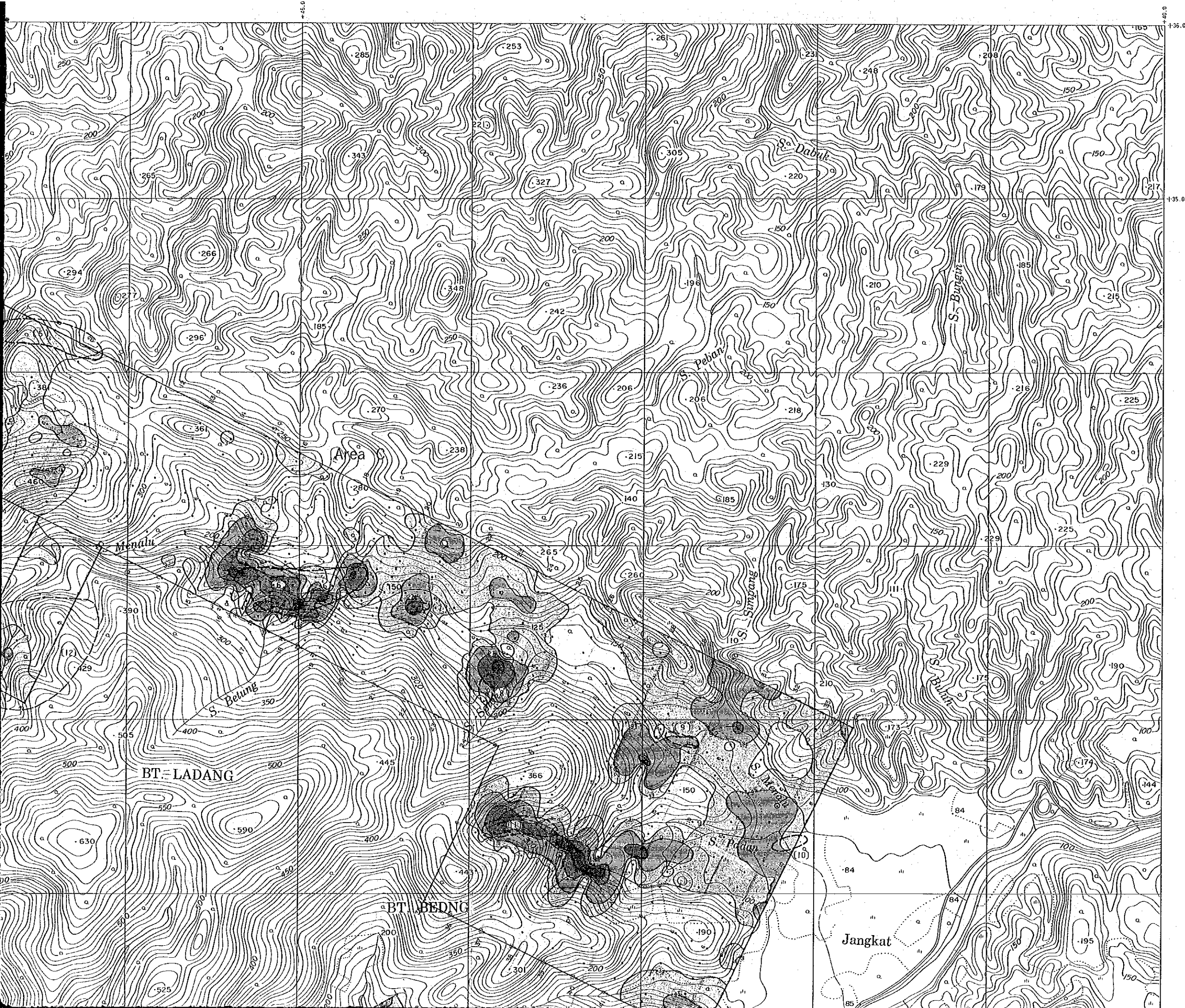
$M + \sigma$: 7.44

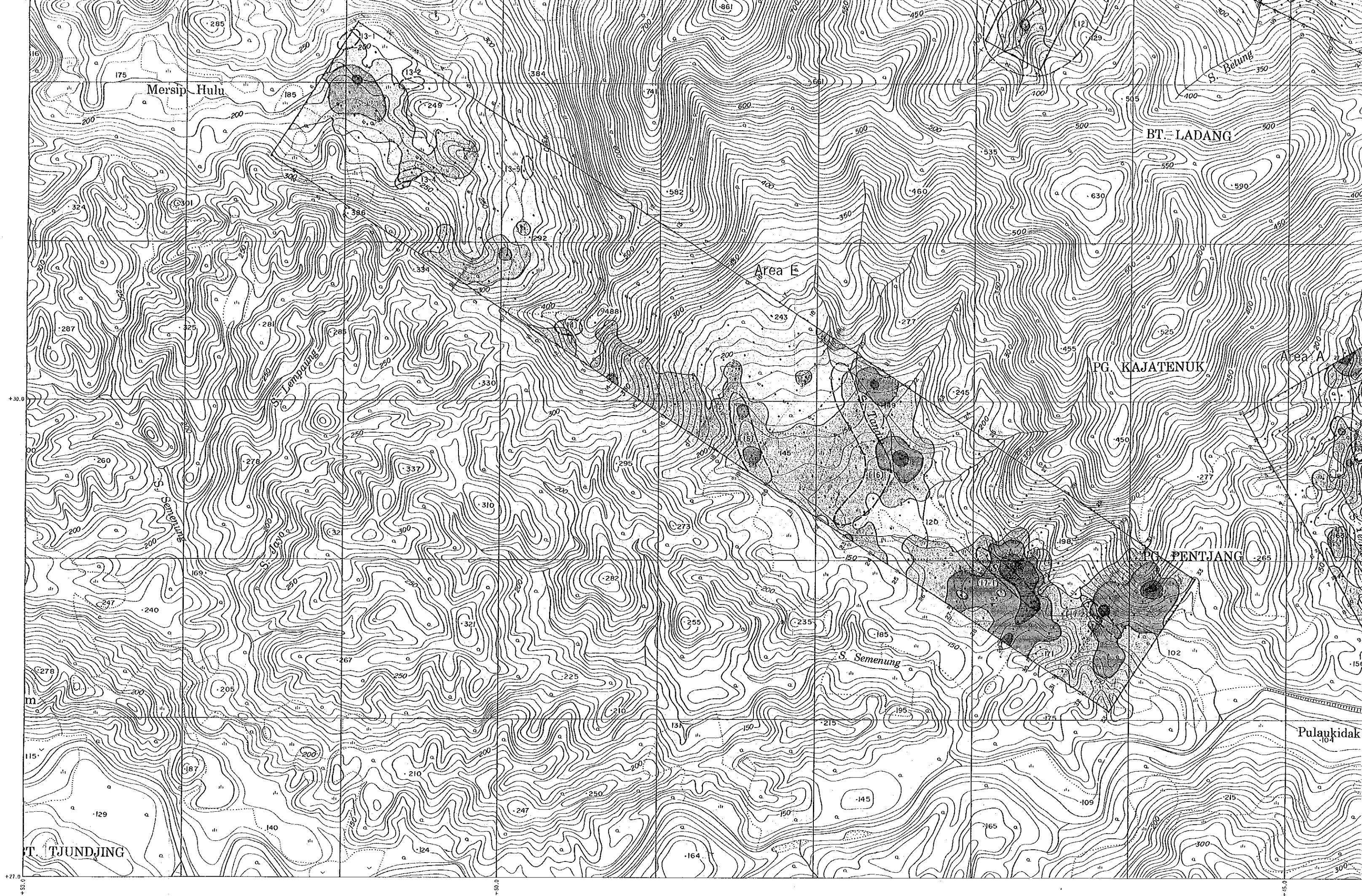
$M + 2\sigma$: 27.21

$M + 3\sigma$: 99.54

Threshold value : 27 ppb

(No) Mineral indication areas by geological survey





+30.0

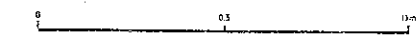
m

+27.0

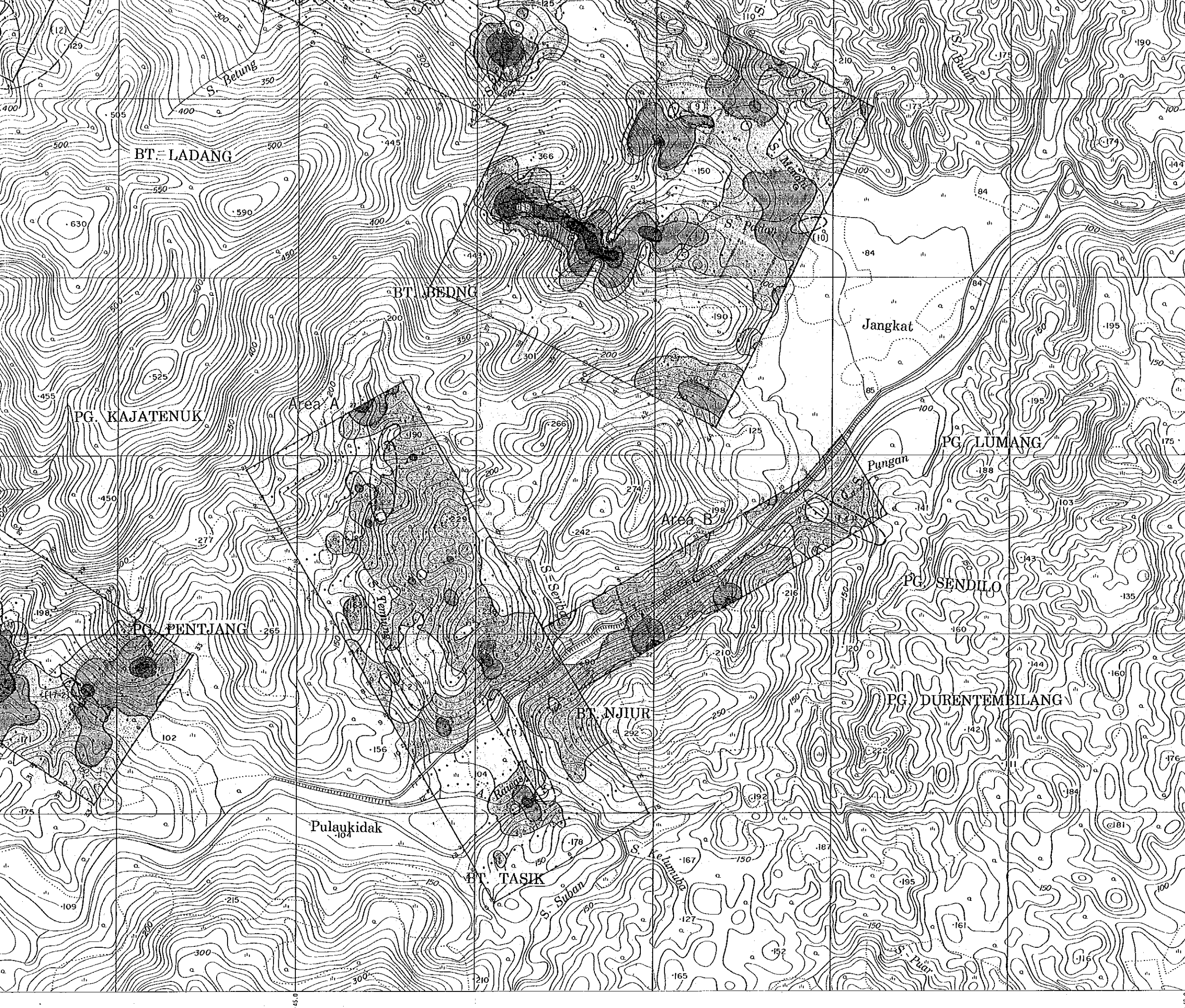
+53.0

+50.0

+45.0



Scale 1:10,000



Statistic Values of Geochemical Analysis

$M + \sigma$: 7.44

$M + 2\sigma$: 27.21

$M + 3\sigma$: 99.54

Threshold value : 27 ppb

○ (No) Mineral indication areas by geological survey

Scale 1:10,000

+45.0

+40.0

+30.0

+27.0