

PL. III

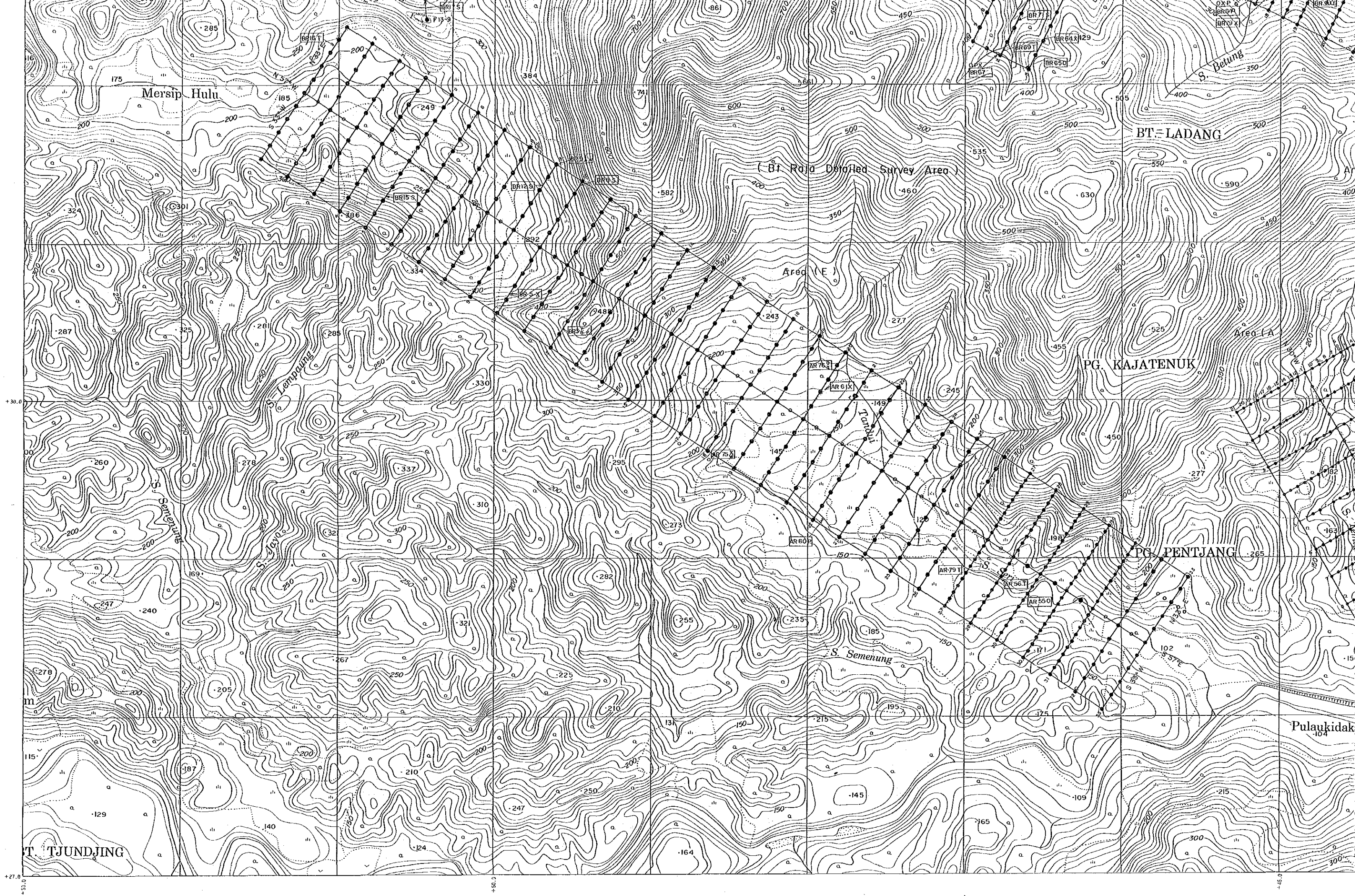
REPORT ON THE MINERAL EXPLORATION OF
SOUTHERN SUMATRA AREA, THE REPUBLIC OF INDONESIA
PHASE II

LOCATION MAP OF GEOCHEMICAL SAMPLES
AND GROUND MAGNETIC SURVEY LINES
IN BT. RAJA DETAILED SURVEY AREA

FEBRUARY · 1987

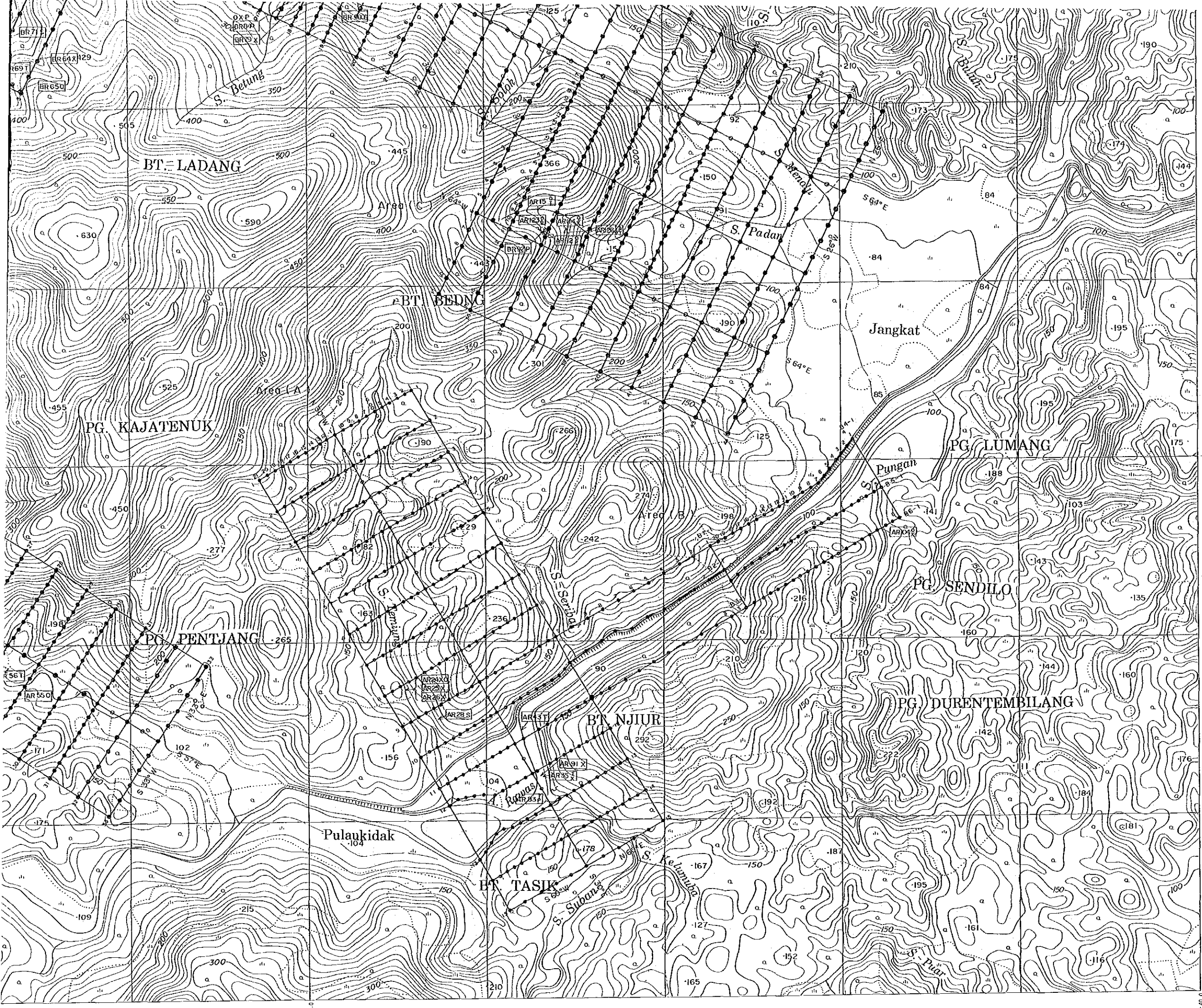
JAPAN INTERNATIONAL COOPERATION AGENCY
METAL MINING AGENCY OF JAPAN

- LEGEND
- Soil samples and Ground magnetic survey points
 - Ground magnetic survey points
 - Rock samples
 - ⊔ Old adit
 - ▨ Survey line
- Laboratory Examination
- T : Thin section
 - O : Chemical Assay of Ore mineral
 - P : Polished Ore specimen
 - X : X-ray Diffractive Analysis
 - W : Whole Rock Analysis
 - A : Age Determination (K-Ar)



Scale 1:10,000

A Age Determination (K-Ar)
 W Whole Rock Analysis



Scale 1:10,000

+40