

PL. I

REPORT ON THE MINERAL EXPLORATION OF
SOUTHERN SUMATRA AREA, THE REPUBLIC OF INDONESIA
PHASE II

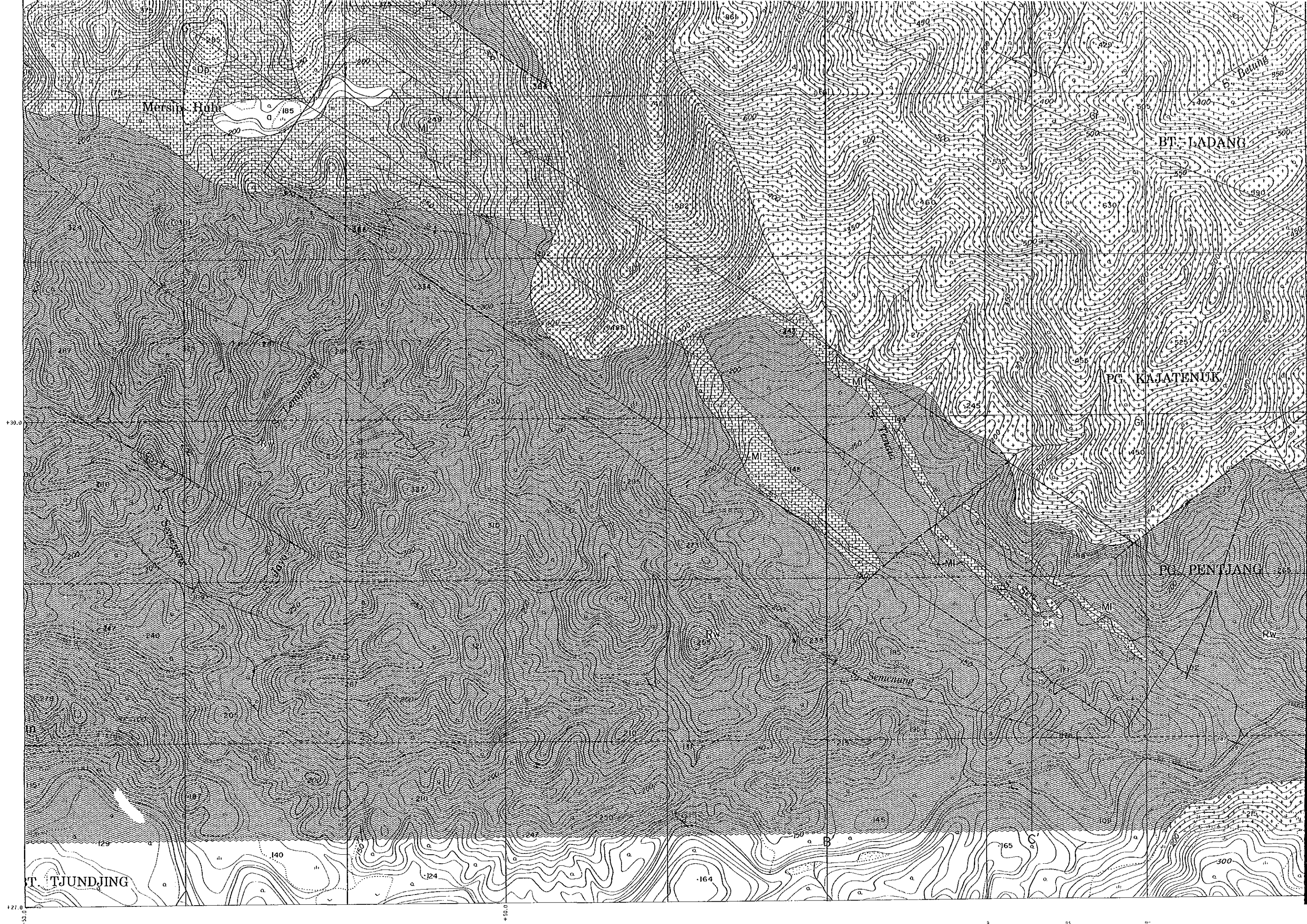
GEOLOGICAL MAP OF BT. RAJA
DETAILED SURVEY AREA

FEBRUARY · 1987

JAPAN INTERNATIONAL COOPERATION AGENCY
METAL MINING AGENCY OF JAPAN

LEGEND

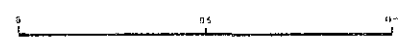
- | | | | |
|-------------------------|-------------|------|---|
| Quaternary | Alluvium | a | a Gravel, Sand, silt |
| Cretaceous
~Jurassic | S. Rawos F. | Mb | Limestone |
| | | Ra | State-phyllite, sandstone, acidic tuff, andesite lava, andesitic tuff |
| Intrusive rocks | | Dp | Diorite porphyry |
| | | Gr | Granitic rock |
| | | Di | Diorite |
| | | 30° | Strike and dip |
| | | ∩ | Anticlinal axis and synclinal axis |
| | | —/— | Fault |
| | | □ | Detailed Survey area |
| | | ┌┐ | Old adit |
| | | A—A' | Profile Line |



+32.0

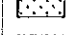
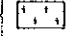

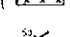

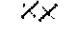

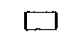
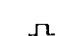
+30.0

+30.0



Scale 1:10,000

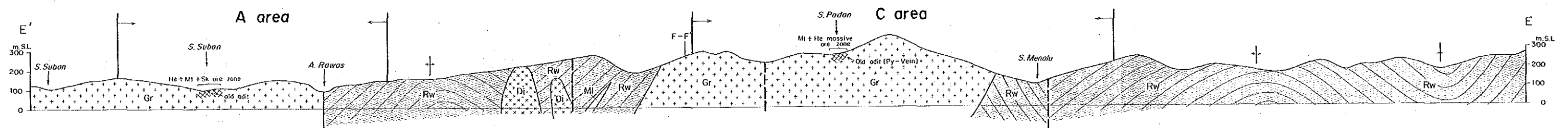
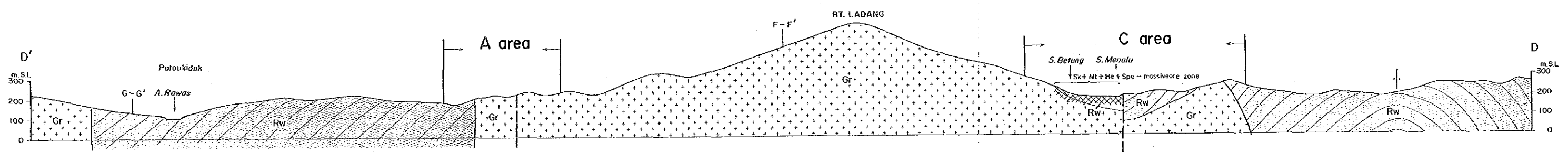
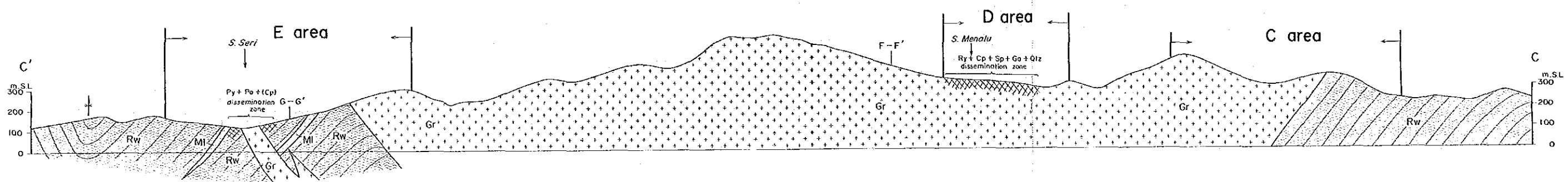
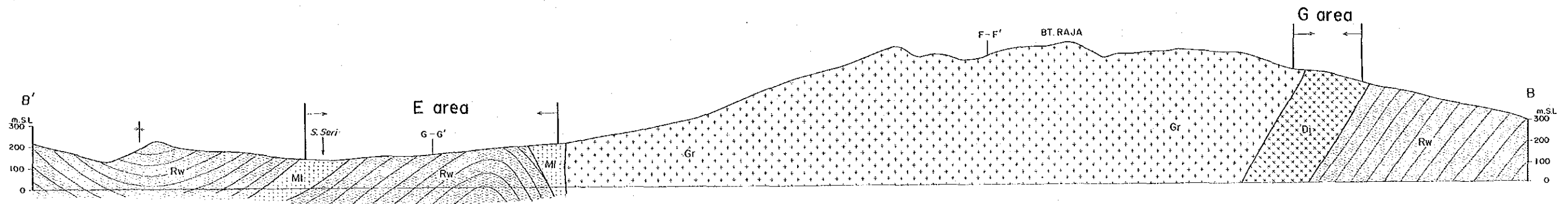
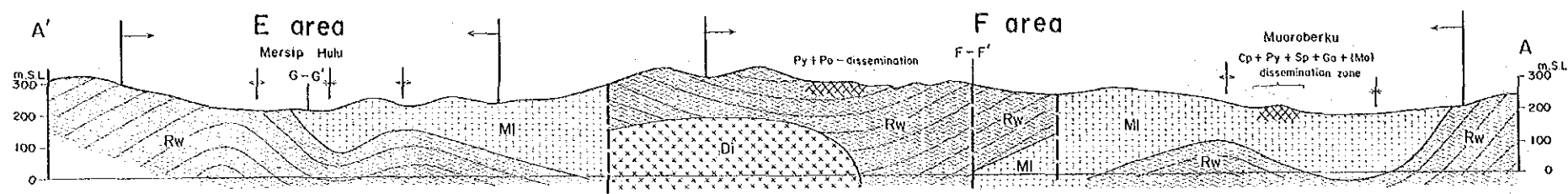


-  Dp Diorite porphyry
- Intrusive rocks**
-  Gr Granite rock
-  Di Diorite
-  Strike and dip
-  Anticlinal axis and syndinal axis
-  Fault
-  Detailed Survey area
-  Old road
-  Profile Line

+30.0

+27.0

+40.0



BT. RAJA

B-B'

S. Menalu

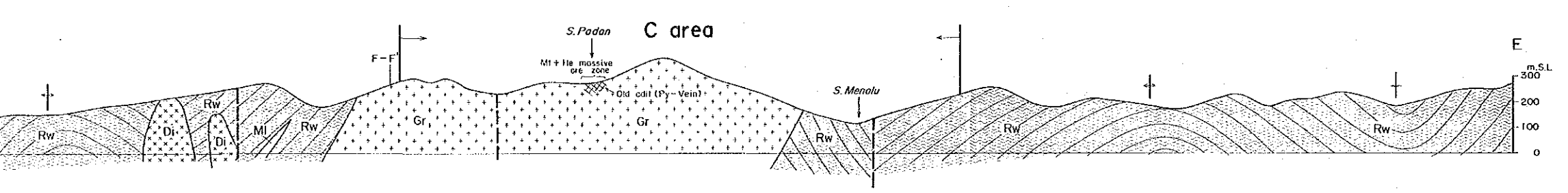
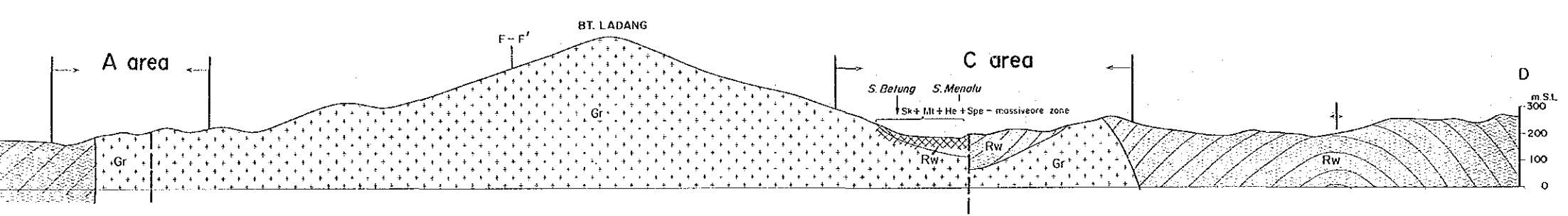
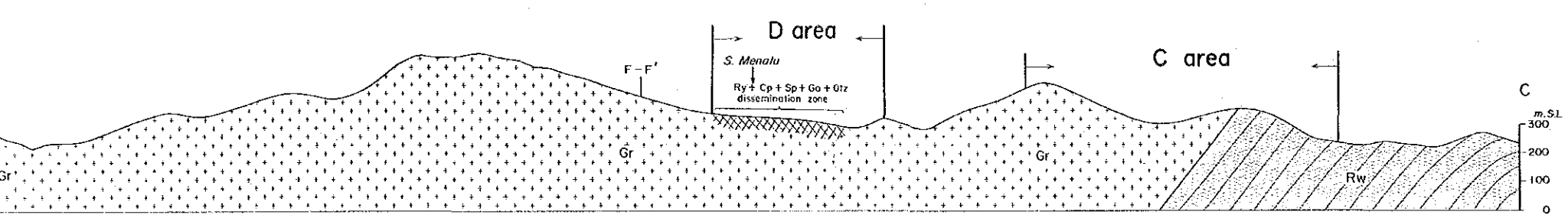
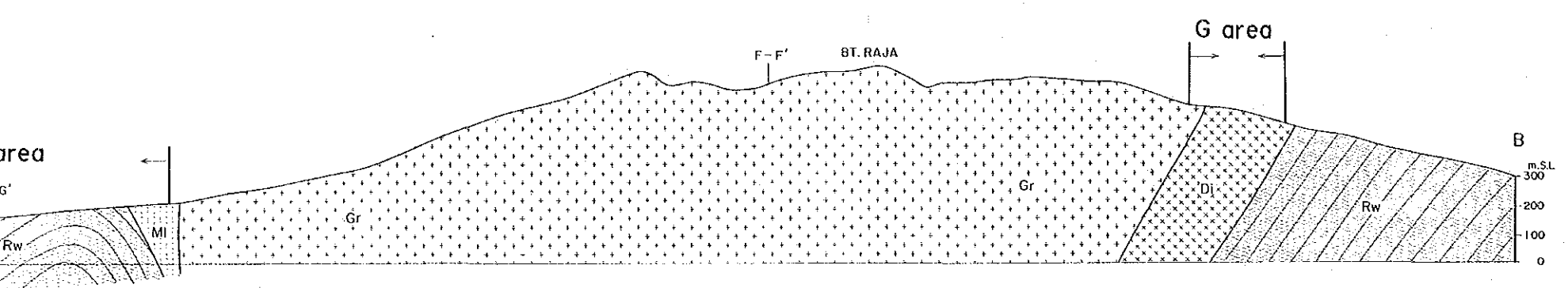
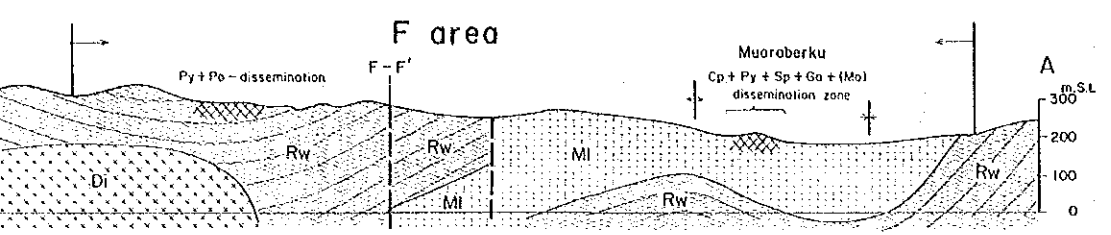
BT. LADANG

REPORT ON THE MINERAL EXPLORATION OF
SOUTHERN SUMATERA AREA, THE REPUBLIC OF INDONESIA
PHASE I

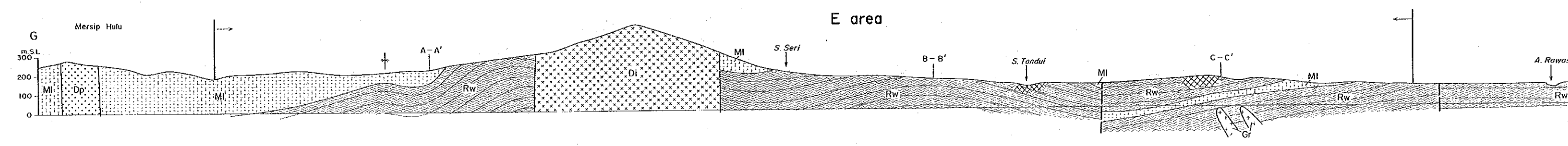
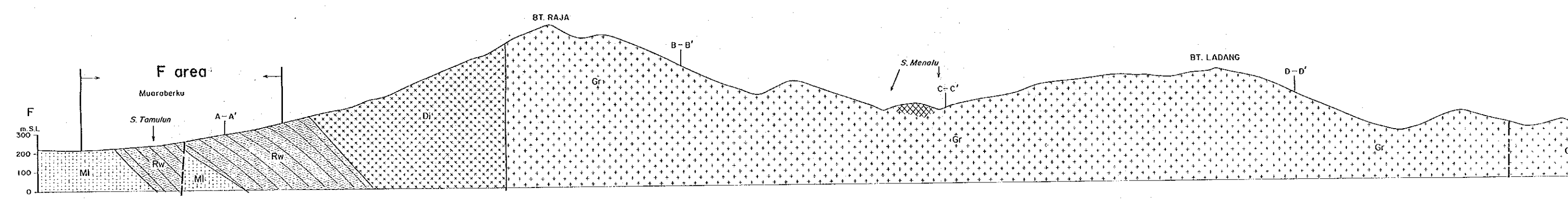
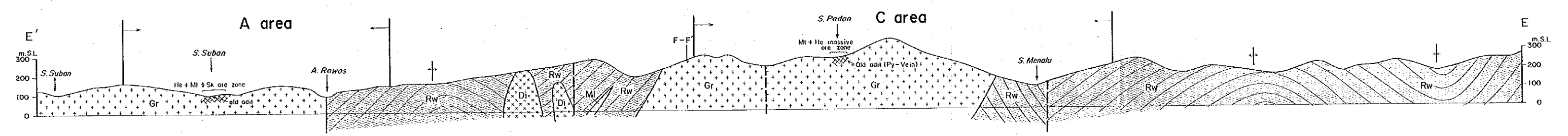
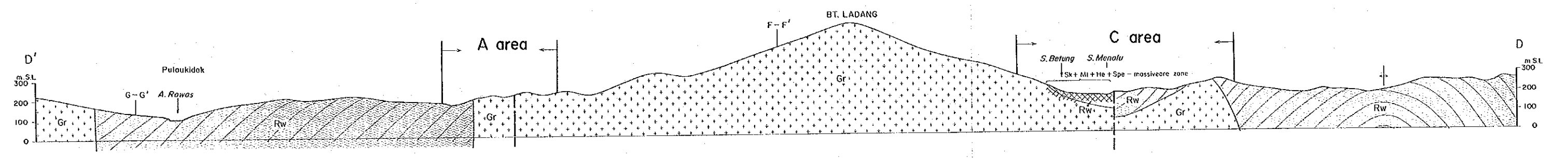
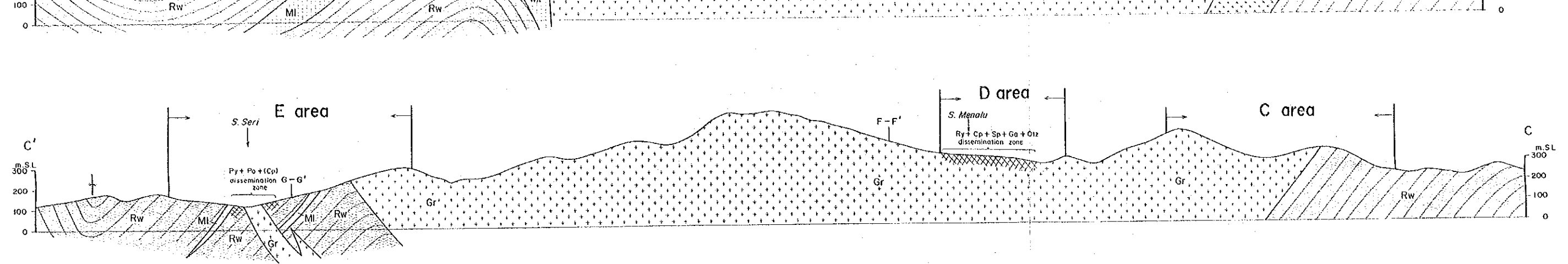
GEOLOGICAL PROFILE OF BT. RAJA
DETAILED SURVEY AREA

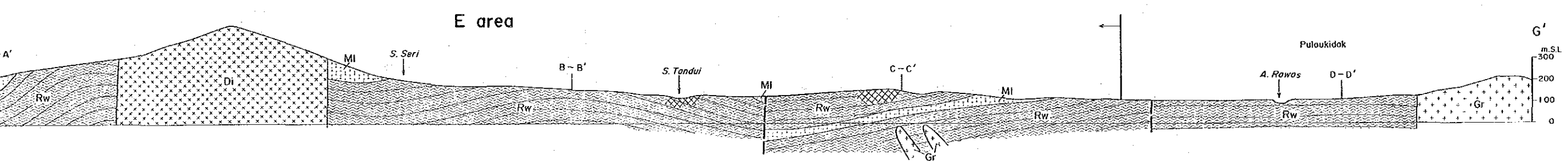
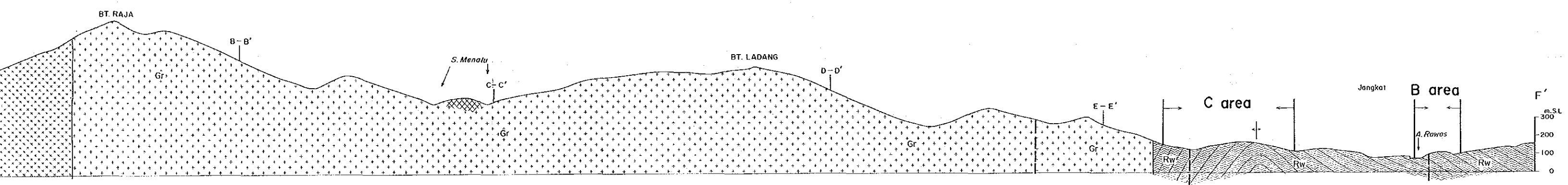
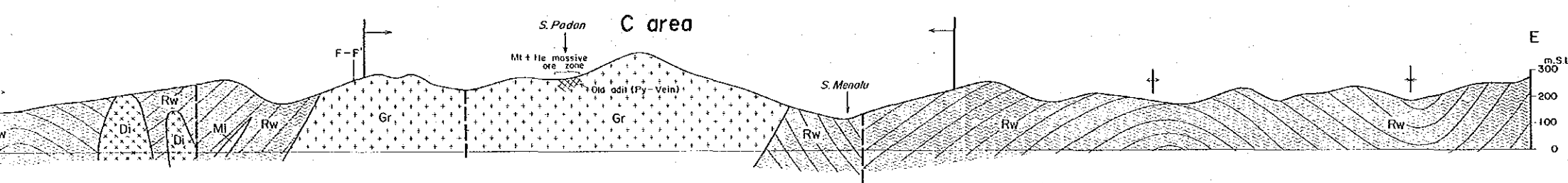
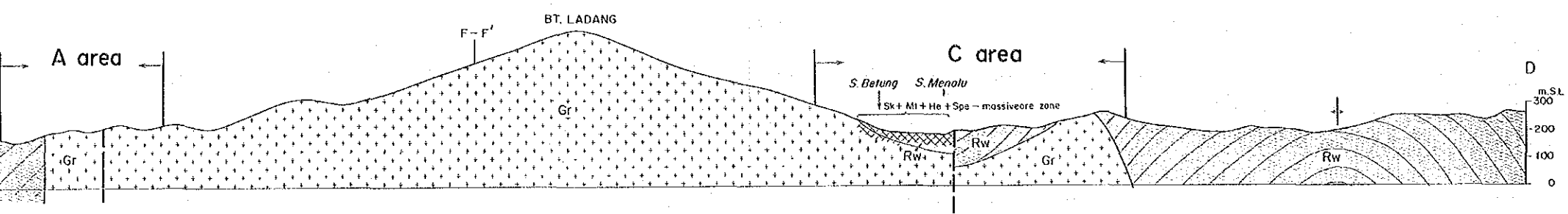
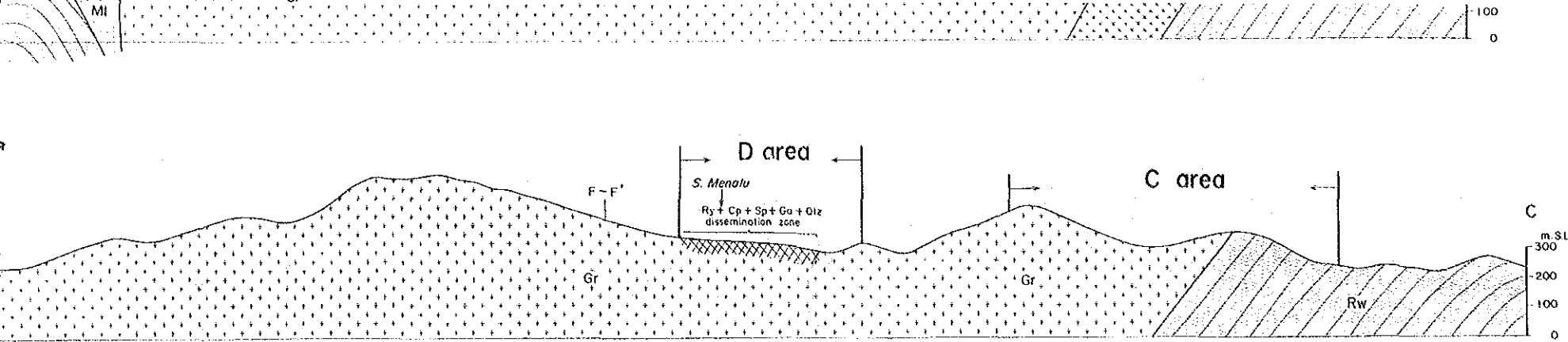
FEBRUARY 1987

JAPAN INTERNATIONAL COOPERATION AGENCY
METAL MINING AGENCY OF JAPAN



- | | | |
|------------------------------------|---------------------|--|
| Cretaceous
~
Jurassic | S. Rawas F. | MI Limestone |
| | | Rw Slate-phyllite, sandstone, acidic tuff, andesite lava, andesitic tuff |
| Intrusive rocks | Dp Diorite porphyry | |
| | Gr Granitic rock | |
| | Di Diorite | |
| A Detailed survey area | | |
| Anticlinal axis and synclinal axis | | |
| Fault | | |
| Mineral indication | | |





FEBRUARY - 1987
 JAPAN INTERNATIONAL COOPERATION AGENCY
 METAL MINING AGENCY OF JAPAN

- | | | |
|-------------------------|--|--|
| Cretaceous
~Jurassic | S. Rawas F. | MI Limestone |
| | | Rw Slate~phyllite, sandstone, acidic tuff, andesite lava, andesitic tuff |
| Intrusive rocks | Dp Diorite porphyry | |
| | Gr Granitic rock | |
| | Di Diorite | |
| | A Detailed survey area | |
| | Anticlinical axis and syndincinal axis | |
| | Fault | |
| | Mineral Indication ation | |