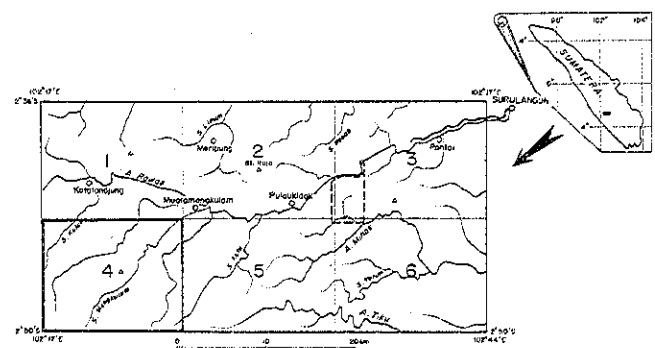


REPORT ON THE MINERAL EXPLORATION OF  
SOUTHERN SUMATERA AREA, THE REPUBLIC OF INDONESIA  
PHASE I

15742  
国土地院

LOCATION MAP OF MINERAL INDICATIONS IN  
THE RECONNAISSANCE SURVEY AREA



Reconnaissance Survey Area Detailed Survey Area

FEBRUARY 1986

JAPAN INTERNATIONAL COOPERATION AGENCY  
METAL MINING AGENCY OF JAPAN

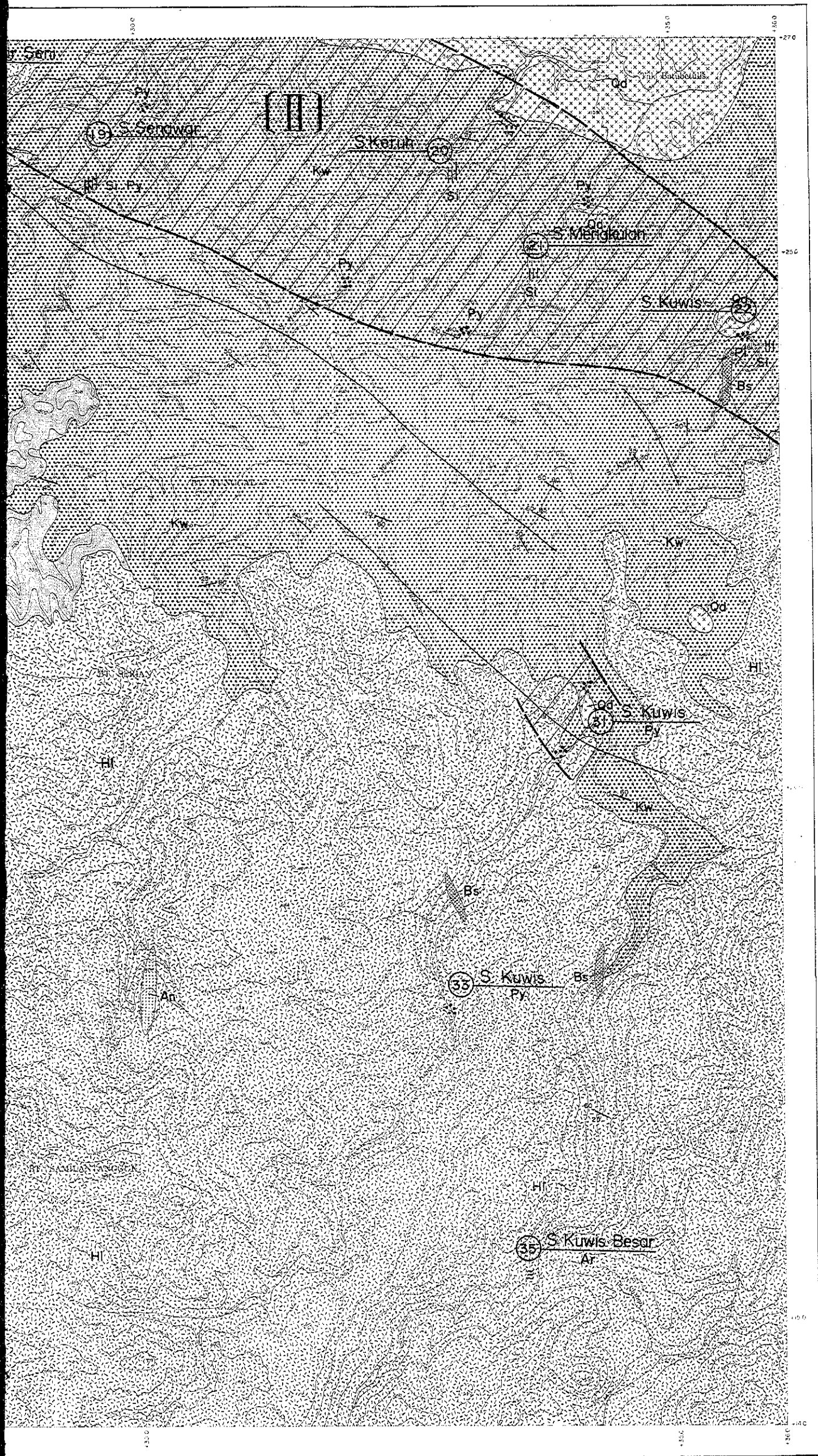
Scale 1:20,000

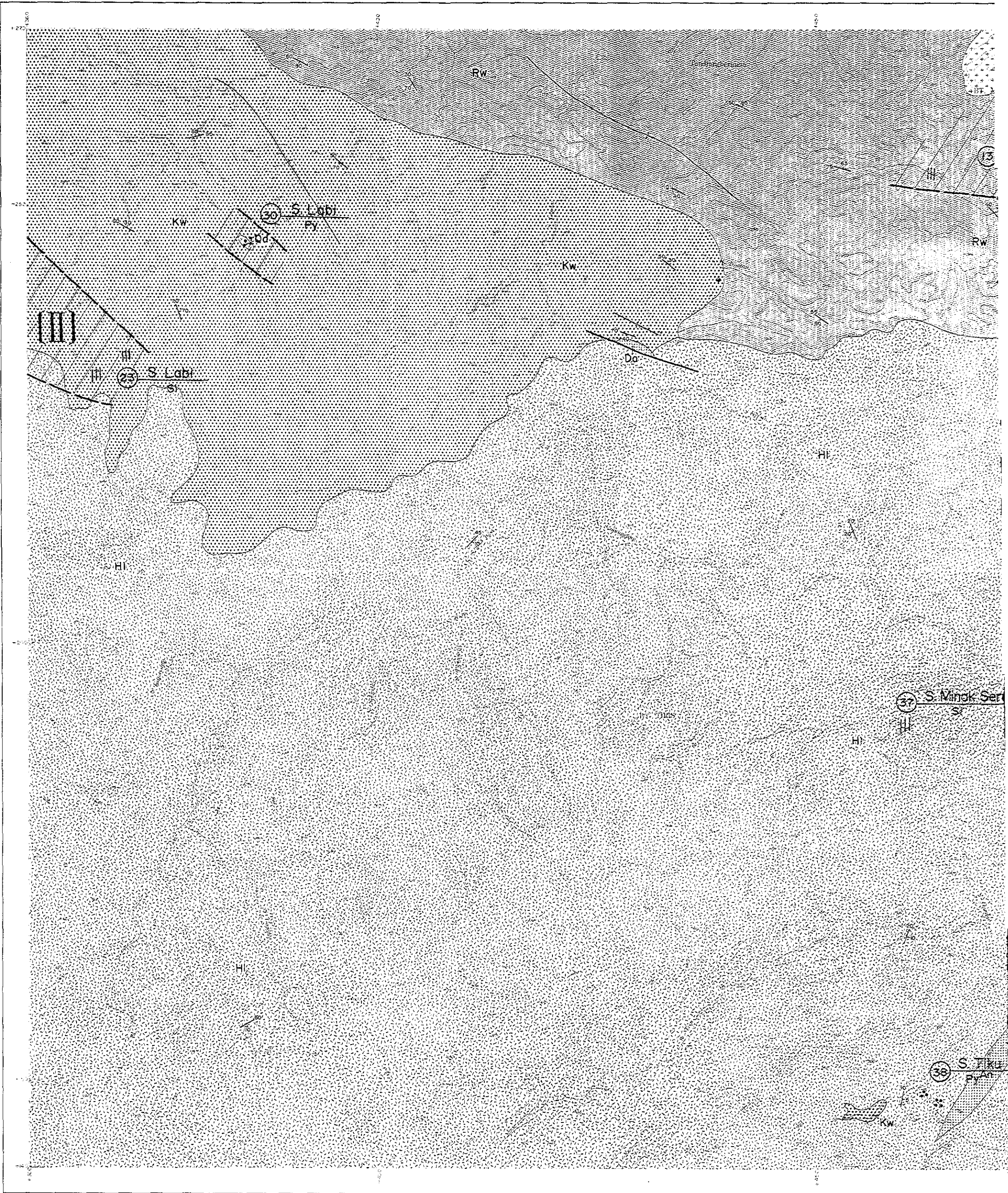


LEGEND

Quaternary	Alluvium	a	a	Gravel, Sand, silt
	Surulangun F.	Sr	Sr	Pumice tuff
Tertiary	S. Minsk F.	Mk	Mk	Sandstone-siltstone, mudstone, conglomerate, coarse tuff, limestone
	Hulusimpang F.	Hi	Hi	Dacite lava, andesite lava, pyroclastics
	Napallicin F.	Np	Np	Sandstone, mudstone, pyroclastics, lignite
Cretaceous	S. Kuwis F.	Kw	Kw	Sandstone, shale, slate, pyroclastics, Basalt lava, andesite lava, limestone
	S. Rawas F.	Rw	Rw	Slate-phyllite, sandstone, acidic tuff, andesite lava, andesitic tuff
Cretaceous - Jurassic		MI	MI	Limestone
		Rw	Rw	Slate-phyllite, sandstone, acidic tuff, andesite lava, andesitic tuff
Intrusive rocks		Da	Da	Dacite
		An	An	Andesite
		Bs	Bs	Basalt, dolerite
		Dd	Dd	Quartz diorite porphyry
		Qm	Qm	Quartz monzonite
		Gd	Gd	Granitic rock
		Qd	Qd	Quartz diorite
			Strike and dip	
			Anticlinal axis and synclinal axis	
			Fault	
			Detailed survey area	

///	Skarnization	Py	Pyritization, Pyrite
...	Dissemination	Ar	Argillization
	Silicification	Si	Silicification
	Argillization	Sk	Skarnization
	Network	Cp	Chalcopyrite
	Vein	Ga	Galena
○	Float	Zn	Sphalerite
		Mo	Molybdenite
		Mg	Magnetite
		ML	Malachite
		Sp	Specularite
		hm	Hematite

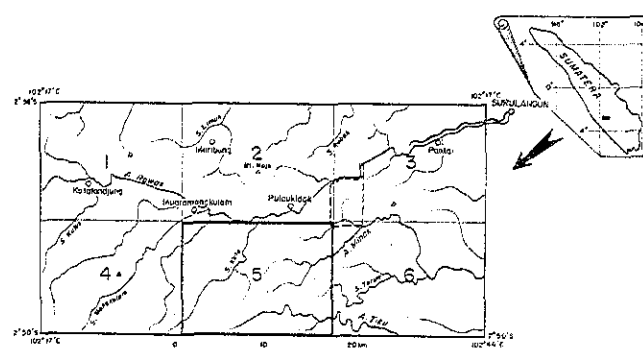




REPORT ON THE MINERAL EXPLORATION OF  
SOUTHERN SUMATERA AREA, THE REPUBLIC OF INDONESIA  
PHASE I

15142  
国書資料室蔵書

LOCATION MAP OF MINERAL INDICATIONS IN  
THE RECONNAISSANCE SURVEY AREA

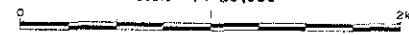


Reconnaissance Survey Area Detailed Survey Area

FEBRUARY 1985

JAPAN INTERNATIONAL COOPERATION AGENCY  
METAL MINING AGENCY OF JAPAN

Scale 1:20,000

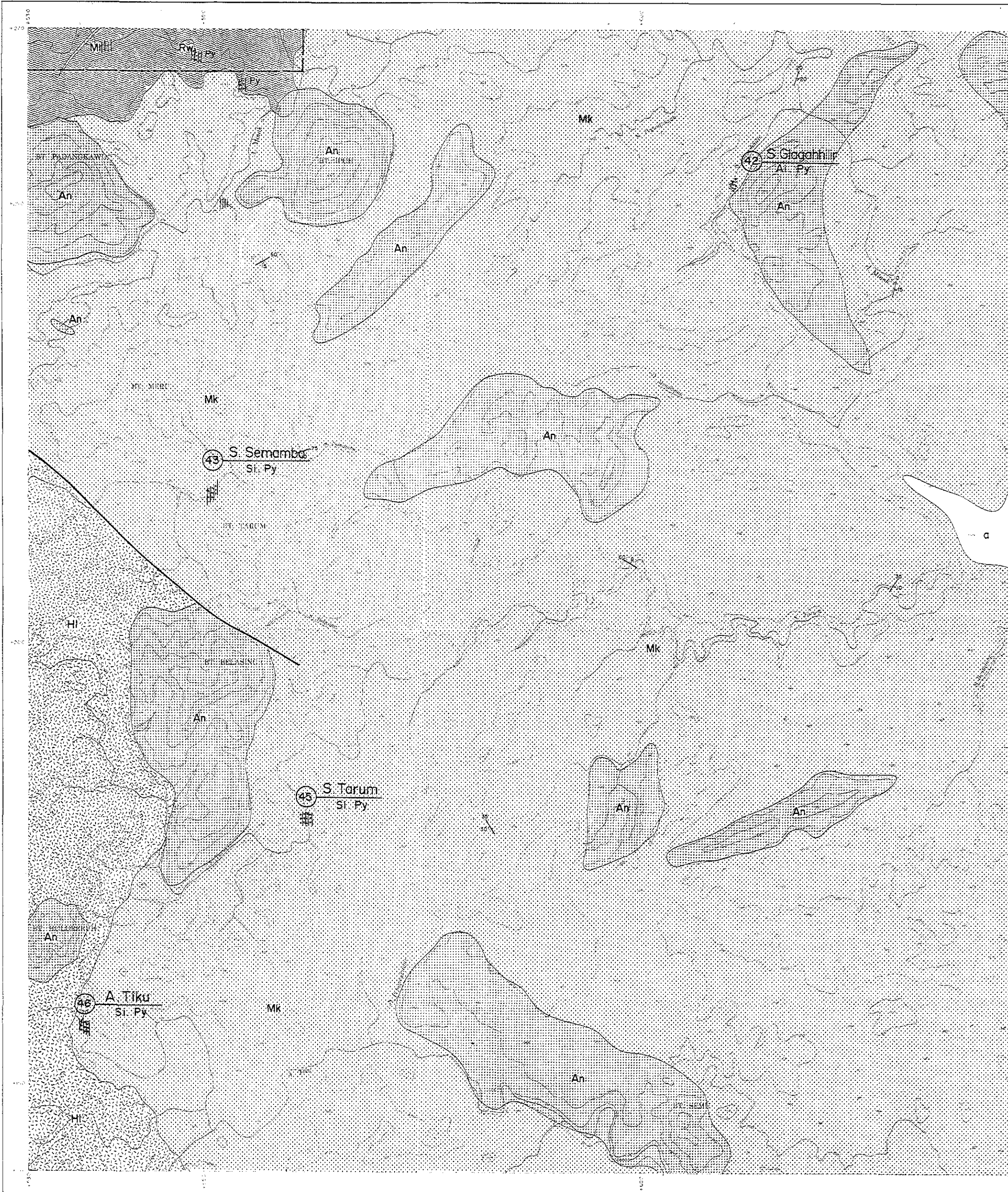


LEGEND

Quaternary	Alluvium	a	a	Gravel, sand, silt
	Surulangun F.	Sr	Sr	Pumice-tuff
Tertiary	S. Minak F.	Mk	Mk	Sandstone-siltstone, mudstone, conglomerate, coarse tuff, limestone
	Hulusimpang F.	Hl	Hl	Dacite lava, andesite lava, pyroclastics
	Napallicin F.	Np	Np	Sandstone, mudstone, pyroclastics, lignite
Cretaceous	S. Kuvis F.	Kw	Kw	Sandstone, shale, slate, pyroclastics Basalt lava, andesite lava, limestone
	S. Rawas F.	MI	MI	Limestone
Cretaceous - Jurassic		Rw	Rw	Slate-phyllite, sandstone, acidic tuff, andesite lava, andesitic tuff
		Da	Da	Dacite
Intrusive rocks		An	An	Andesite
		Bs	Bs	Basalt, dolerite
		Dp	Dp	Quartz diorite porphyry
		Qm	Qm	Quartz monzonite
		Gd	Gd	Granitic rock
	Qd	Qd	Quartz diorite	
				Strike and dip
				Anticlinal axis and synclinal axis
				Fault
				Detailed survey area

///	Skarnization	Py	Pyritization, pyrite
•••	Dissemination	Ar	Argillization
	Silicification	Si	Silicification
~	Argillization	Sk	Skarnization
⊗	Network	Cp	Chalcopyrite
—	Vein	Ga	Galena
⊙	Floor	Zn	Sphalerite
		Mo	Molybdenite
		Mg	Magnetite
		ML	Malachite
		Sp	Specularite
		Hm	Hematite

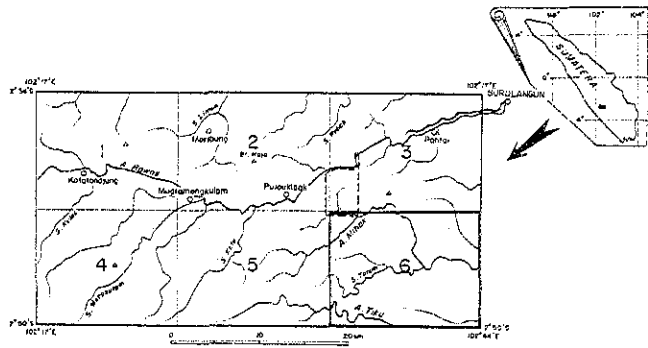




REPORT ON THE MINERAL EXPLORATION OF  
SOUTHERN SUMATRA AREA, THE REPUBLIC OF INDONESIA  
PHASE I

国際協力事業団  
15142  
国際資源調査会

LOCATION MAP OF MINERAL INDICATIONS IN  
THE RECONNAISSANCE SURVEY AREA



Reconnaissance Survey Area Detailed Survey Area

FEBRUARY - 1986

JAPAN INTERNATIONAL COOPERATION AGENCY  
METAL MINING AGENCY OF JAPAN

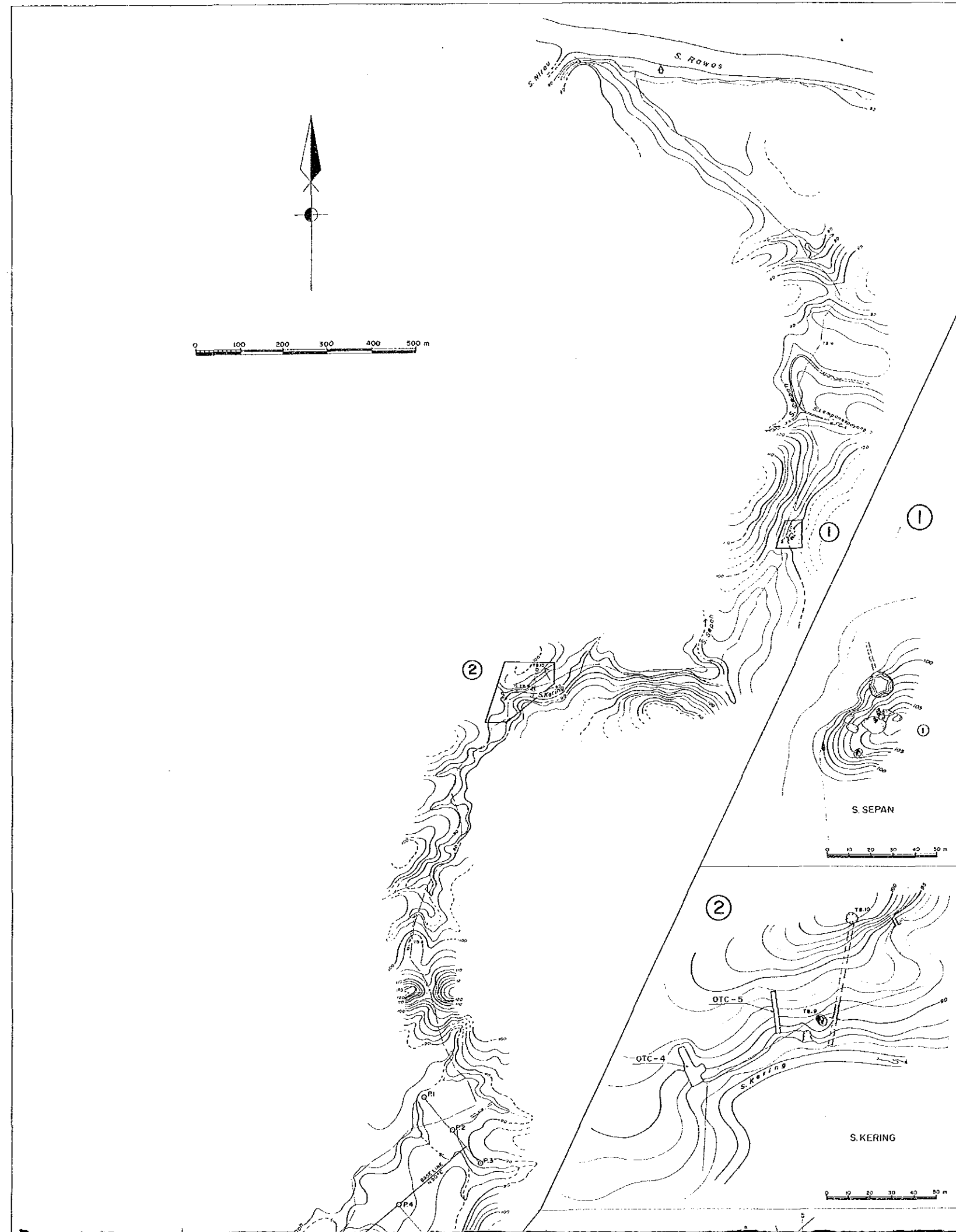
Scale 1 : 20,000



LEGEND

Quaternary	Alluvium	a	a	Gravel, Sand, silt
	Surulangun F.	Sr	Sr	Pumice tuff
Tertiary	S. Minak F.	Mk	Mk	Sandstone-siltstone, mudstone, conglomerate, coarse tuff, limestone
	Hulusimpang F.	Hl	Hl	Dacite lava, andesite lava, pyroclastics
	Napalicin F.	Np	Np	Sandstone, mudstone, pyroclastics, lignite
Cretaceous	S. Kuwis F.	Kw	Kw	Sandstone, shale, slate, pyroclastics Basalt lava, andesite lava, limestone
	S. Rawas F.	Ml	Ml	Limestone
Cretaceous - Jurassic	S. Rawas F.	Rw	Rw	Slate-phyllite, sandstone, acidic tuff, andesite lava, andesitic tuff
		Da	Da	Dacite
Intrusive rocks		An	An	Andesite
		Bs	Bs	Basalt, dolerite
		Dp	Dp	Quartz diorite porphyry
		Qm	Qm	Quartz monzonite
		Gd	Gd	Granitic rock
		Qd	Qd	Quartz diorite
	Strike and dip			Strike and dip
	Antidinal axis and synclinal axis			Antidinal axis and synclinal axis
	Fault			Fault
	Detailed survey area			Detailed survey area
Skarnization		Py	Py	Pyritization, pyrite
Dissemination		Ar	Ar	Argillization
Silicification		St	St	Silicification
Argillization		Sk	Sk	Skarnization
Network		Cp	Cp	Chalcopyrite
Vein		Go	Go	Galenite
Flot		Zn	Zn	Sphalerite
		Mo	Mo	Molybdenite
		Mg	Mg	Magnetite
		Ml	Ml	Malachite
		Sp	Sp	Specularite
		Hm	Hm	Hematite





PL. X

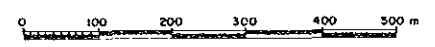
REPORT ON THE MINERAL EXPLORATION OF  
SOUTHERN SUMATRA AREA, THE REPUBLIC OF INDONESIA  
PHASE I

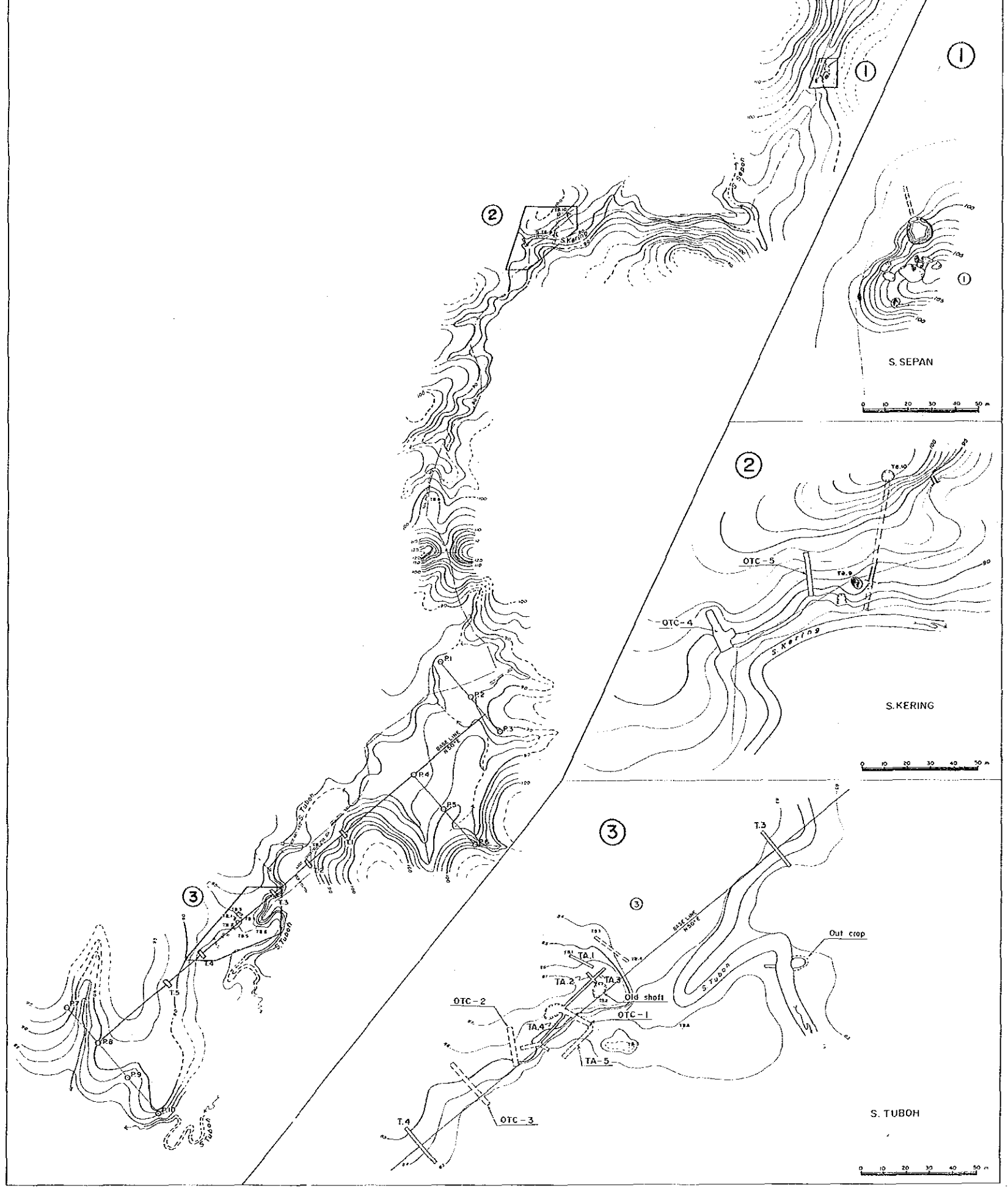
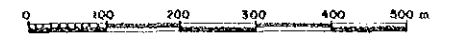
15142  
 国書資料室蔵書

LOCATION MAP OF MINERAL INDICATIONS IN  
THE DETAILED SURVEY AREA

FEBRUARY - 1986

JAPAN INTERNATIONAL COOPERATION AGENCY  
METAL MINING AGENCY OF JAPAN



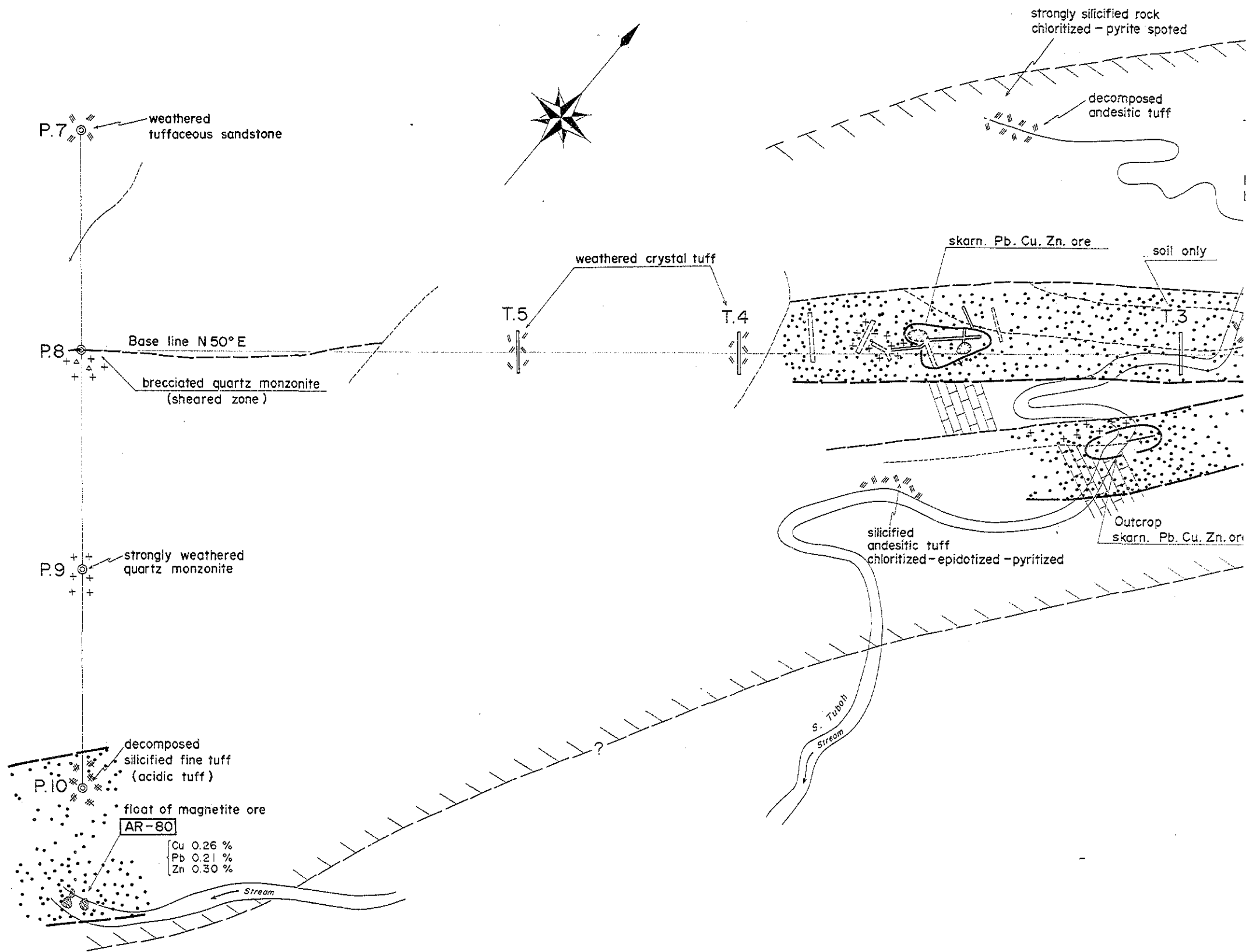


S. SEPAN

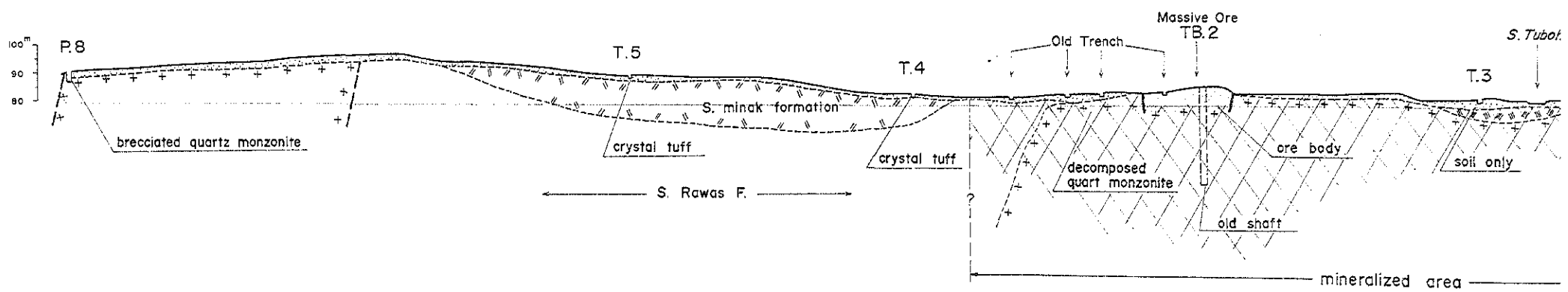
S. KERING

S. TUBOH

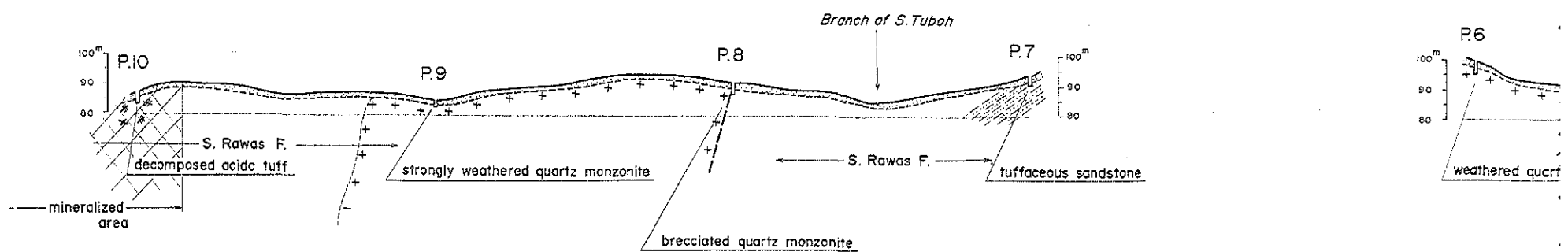


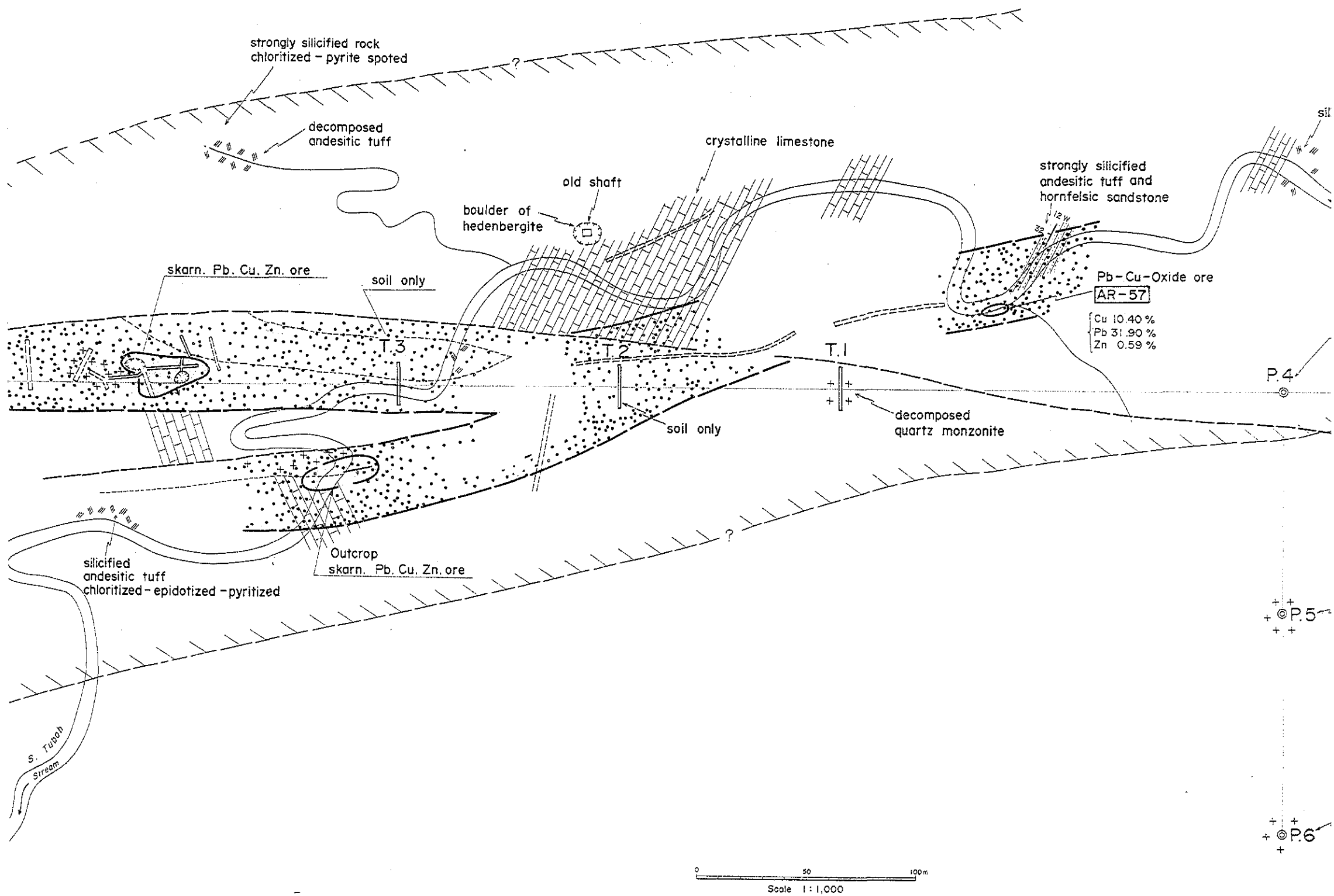


SECTION OF BASE LINE P.8, T.5, T.4, T.3

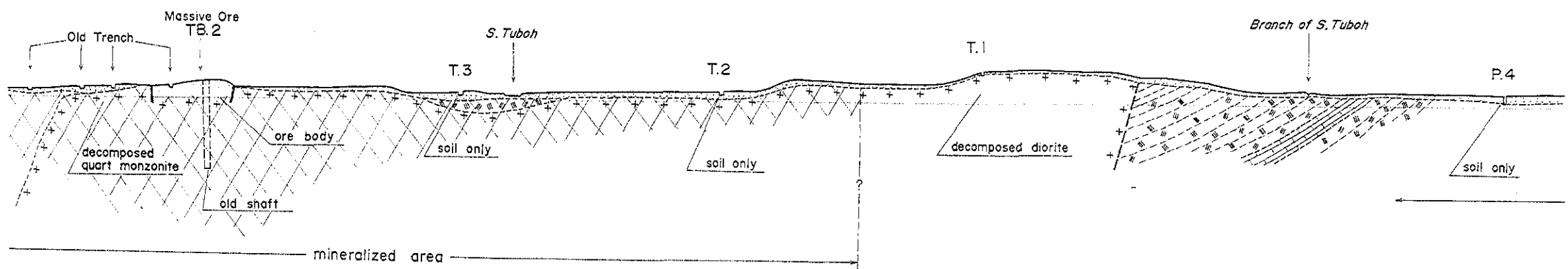


SECTION P.10, P.9, P.8, P.7



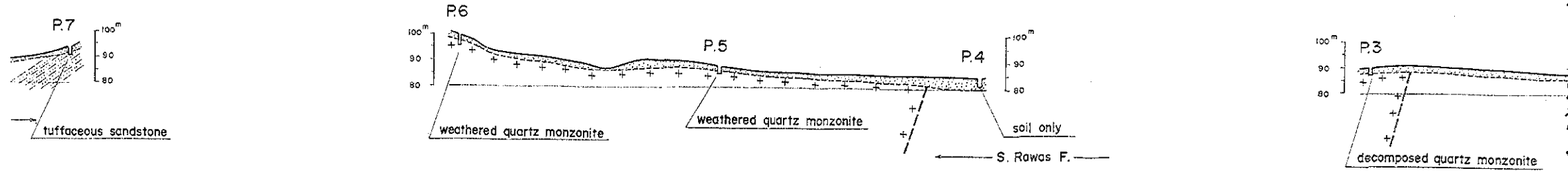


SECTION OF BASE LINE P.8,T.5,T.4,T.3,T.2,T.1,P.4



SECTION P.6,P.5,P.4

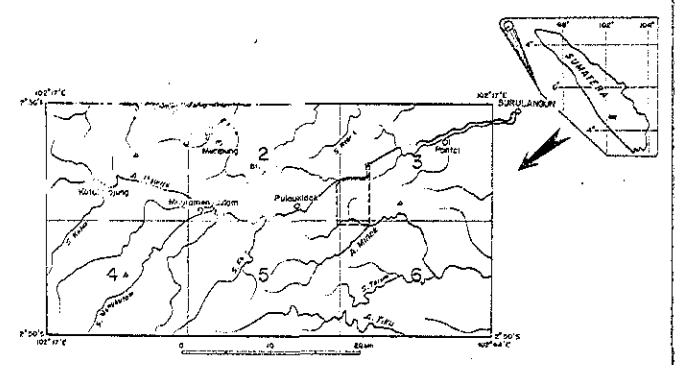
SECTION



REPORT ON THE MINERAL EXPLORATION OF SOUTHERN SUMATERA AREA, THE REPUBLIC OF INDONESIA PHASE I

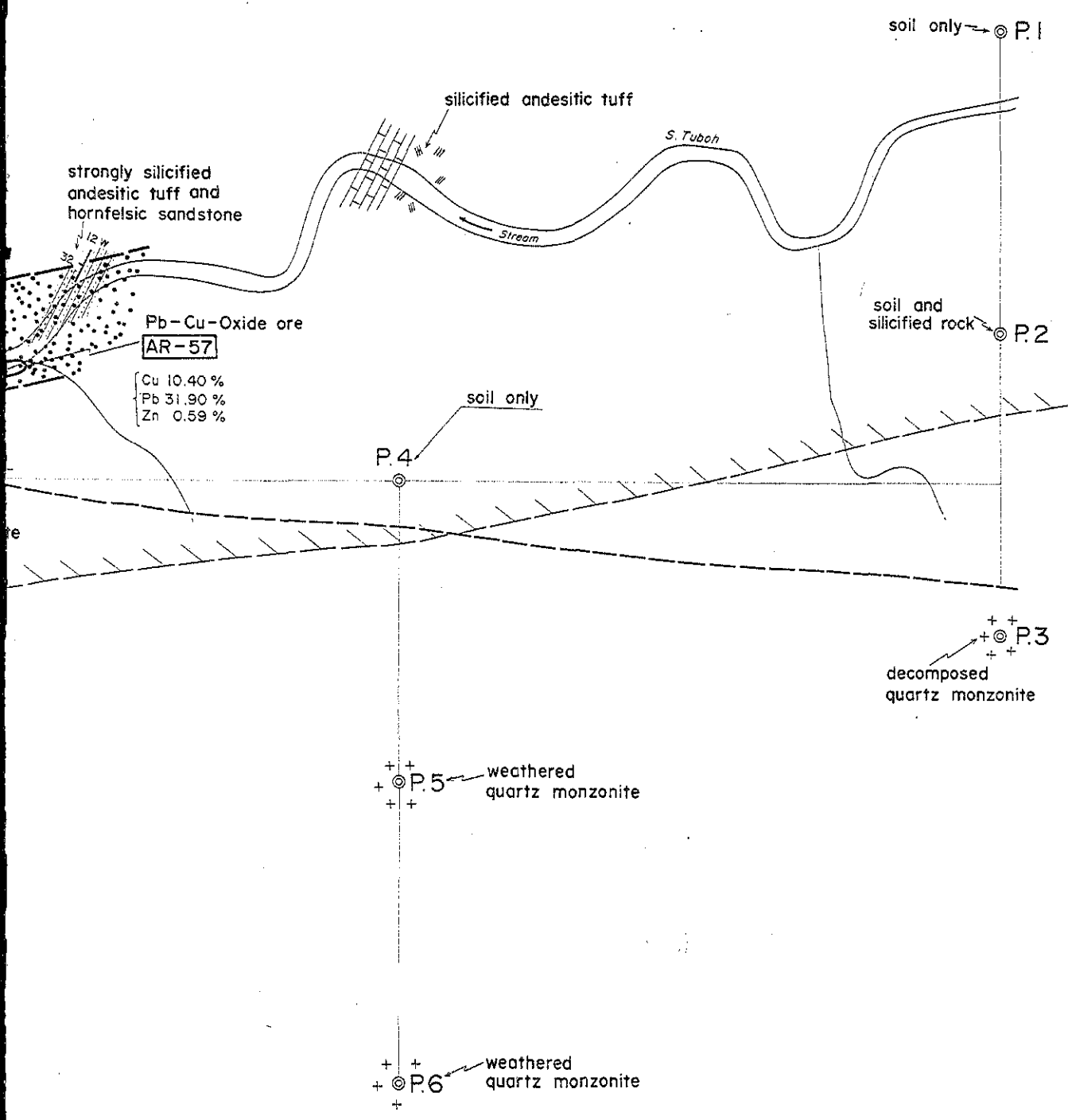
15142

OCCURRENCE OF THE ORE AT THE S. TUBOH MINERAL INDICATION



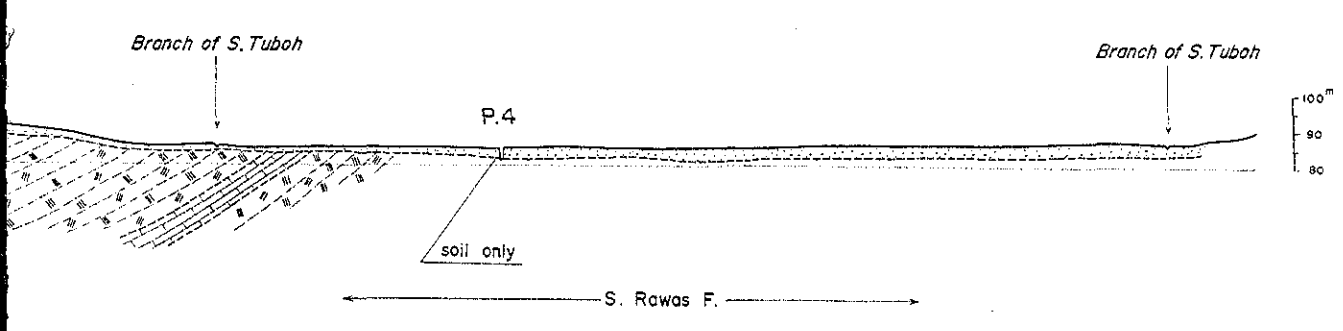
FEBRUARY 1986

JAPAN INTERNATIONAL COOPERATION AGENCY METAL MINING AGENCY OF JAPAN



LEGEND

- S. Mink formation: Crystal tuff, Andesitic tuff, Acidic tuff
S. Rawas formation: Sandstone, Limestone
Intrusiv rock: Quartz monzonite
Fault
New pit, New trench, Old trench, Old shaft, Ore body, Mineralized area, Altered zone



SECTION P.3, P.2, P.1

