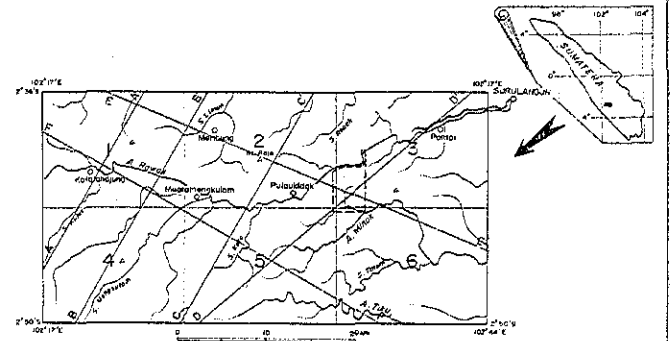


REPORT ON THE MINERAL EXPLORATION OF  
SOUTHERN SUMATERA AREA, THE REPUBLIC OF INDONESIA  
PHASE I

15342  
国書資料室蔵

GEOLOGIC PROFILE OF THE RECONNAISSANCE  
SURVEY AREA



Reconnaissance Survey Area Detailed Survey Area

FEBRUARY 1986

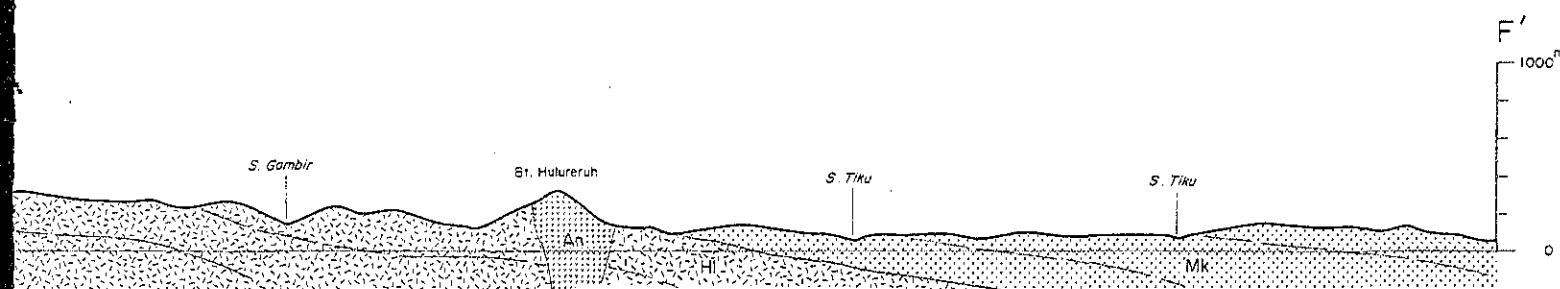
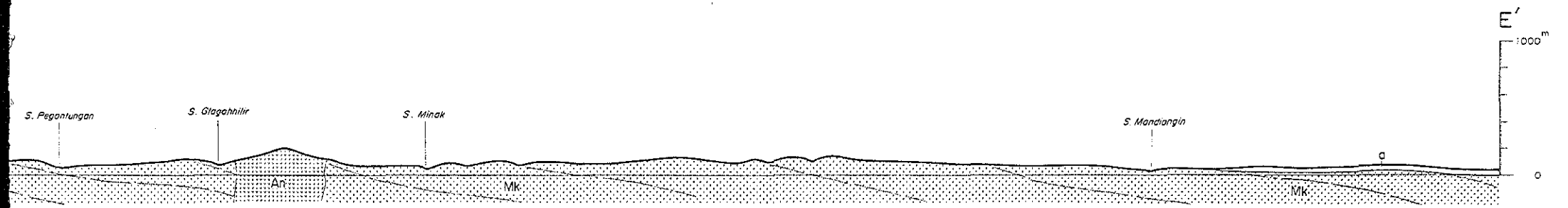
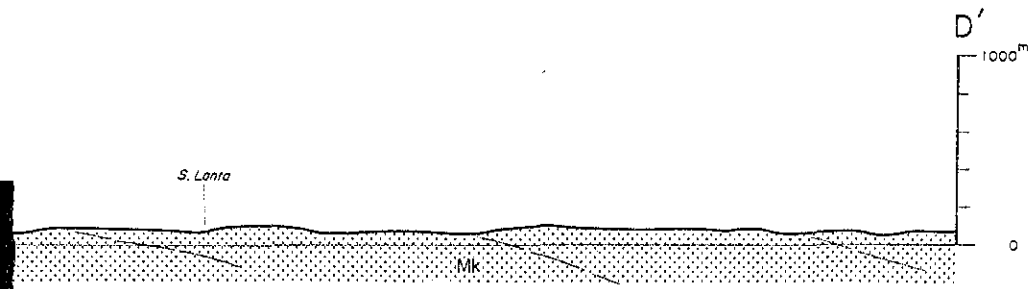
JAPAN INTERNATIONAL COOPERATION AGENCY  
METAL MINING AGENCY OF JAPAN

Scale 1 : 20,000



LEGEND

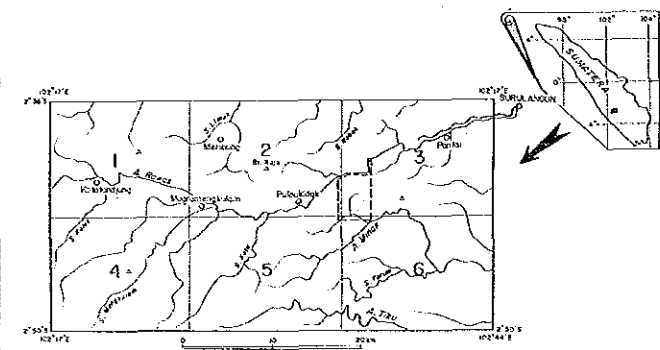
Quaternary	Alluvium	a	Gravel, Sand, silt
	Surulangun F.	Sr	Pumice tuff
Tertiary	S. Minak F.	Mk	Sandstone-siltstone, mudstone, conglomerate, coarse tuff, limestone
	Hulusimpang F.	Hl	Dacite lava, andesite lava, pyroclastics
	Napallian F.	Np	Sandstone, mudstone, pyroclastics, lignite
Cretaceous		Nb	Basalt lava, hyaloclastite
	S. Kuwit F.	Kw	Sandstone, shale, slate, pyroclastics Basalt lava, andesite lava, limestone
Cretaceous -Jurassic		Ml	Limestone
	S. Rowas F.	Rw	Slate-phyllite, sandstone, acidic tuff, andesite lava, andesitic tuff
Intrusive rocks		Da	Dacite
		An	Andesite
		Bs	Basalt, dolerite
		Dp	Quartz diorite porphyry
		Qm	Quartz monzonite
		Gd	Granitic rock
		Qd	Quartz diorite
	/	Strike and dip	
	X	Anticlinax axis and synclinal axis	
	/	Fault	
	□	Detailed survey area	



REPORT ON THE MINERAL EXPLORATION OF  
SOUTHERN SUMATERA AREA, THE REPUBLIC OF INDONESIA  
PHASE I

国産協力探査団  
1514  
国産資料室蔵

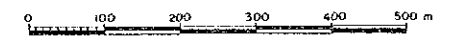
GEOLOGIC MAP OF THE DETAILED SURVEY AREA



□ Reconnaissance Survey Area □ Detailed Survey Area

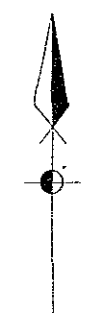
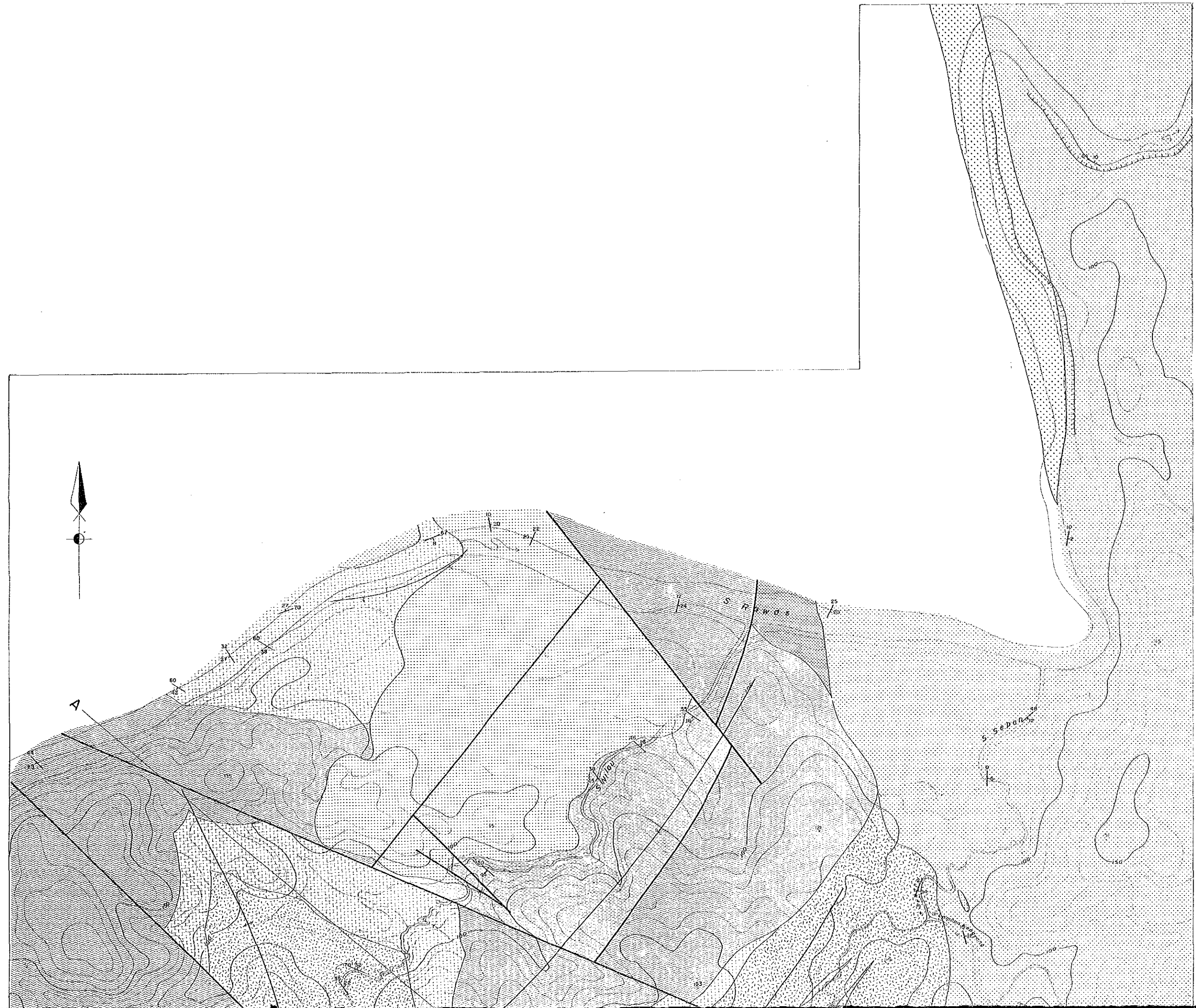
FEBRUARY - 1986


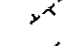
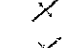
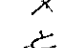
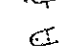

JAPAN INTERNATIONAL COOPERATION AGENCY  
METAL MINING AGENCY OF JAPAN



LEGEND

- S. Minak F. Conglomerate, siltstone, sandstone, lignite beds.
- S. Kucis F. Shale
- Sandstone, slate
- S. Rakas F. Limestone
- Sericitic phyllite, andesitic tuff, andesite lava
- Andesite
- Porphyritic andesite
- Dolerite
- Intrusive rocks Quartz diorite porphyry
- Porphyritic quartz monzonite
- Quartz monzonite
- Ore mineral indication
- Pit
- Trench
- Old shaft
- Strike and dip
- cleavage
- Fault (younger)
- Fault (older)
- Anticlinax axis
- Synclinal axis
- Dome structure
- Basin structure



-  Fault (younger)
-  Fault (older)
-  Anticlinal axis
-  Synclinal axis
-  Dome structure
-  Basin structure



B

C

9-

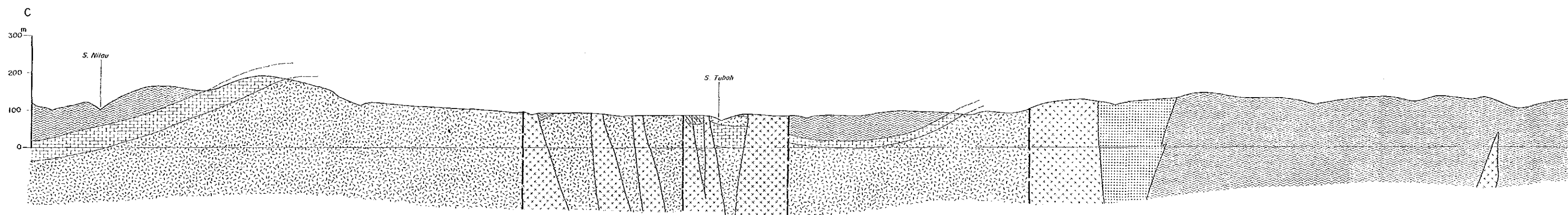
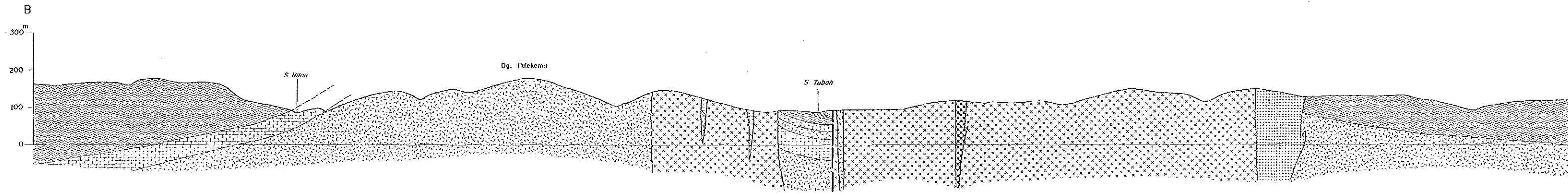
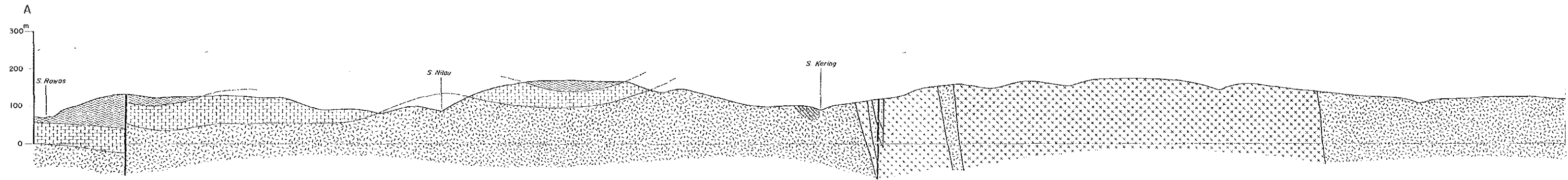


A.

B.

C.

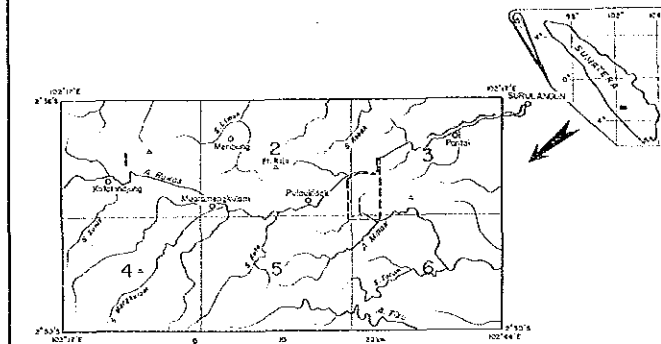




REPORT ON THE MINERAL EXPLORATION OF  
SOUTHERN SUMATERA AREA, THE REPUBLIC OF INDONESIA  
PHASE I

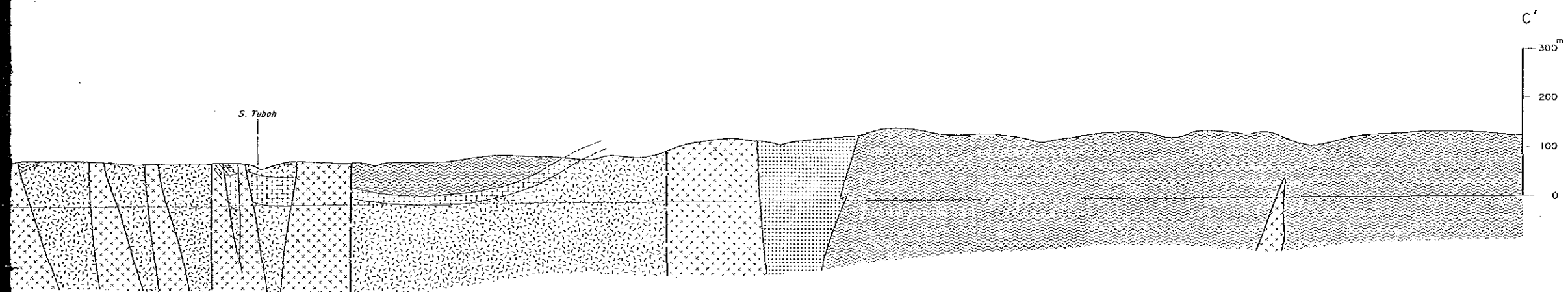
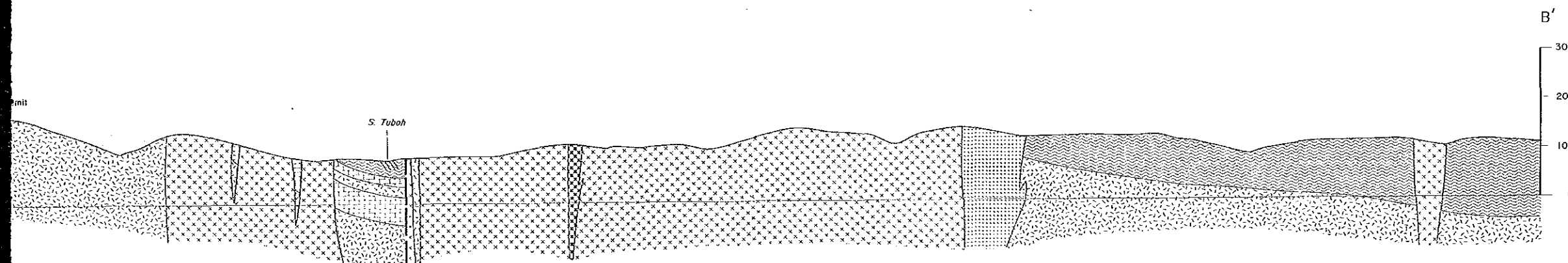
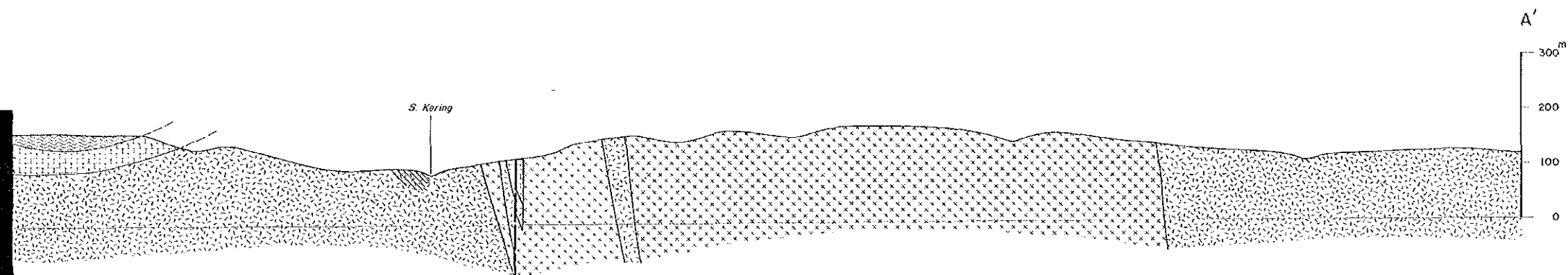
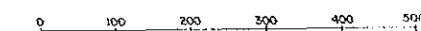
国際協力事業団  
15142  
国産資料室編

GEOLOGIC PROFILE OF THE DETAILED SURVEY  
AREA



FEBRUARY - 1986

JAPAN INTERNATIONAL COOPERATION AGENCY  
METAL MINING AGENCY OF JAPAN



LEGEND

- S. Minak F. Conglomerate, siltstone, sandstone, lignite beds.
- S. Kisalis F. Shale
- S. Rawaas F. Sandstone, slate
- Limustone
- Sericitic phyllite, andestic tuff, andestic lava
- Andesite
- Porphyritic andesite
- Dolerite
- Intrusive rocks Quartz diorite porphyry
- Porphyritic quartz monzonite
- Quartz monzonite
- Ore mineral indication
- Fault (younger)
- Fault (older)