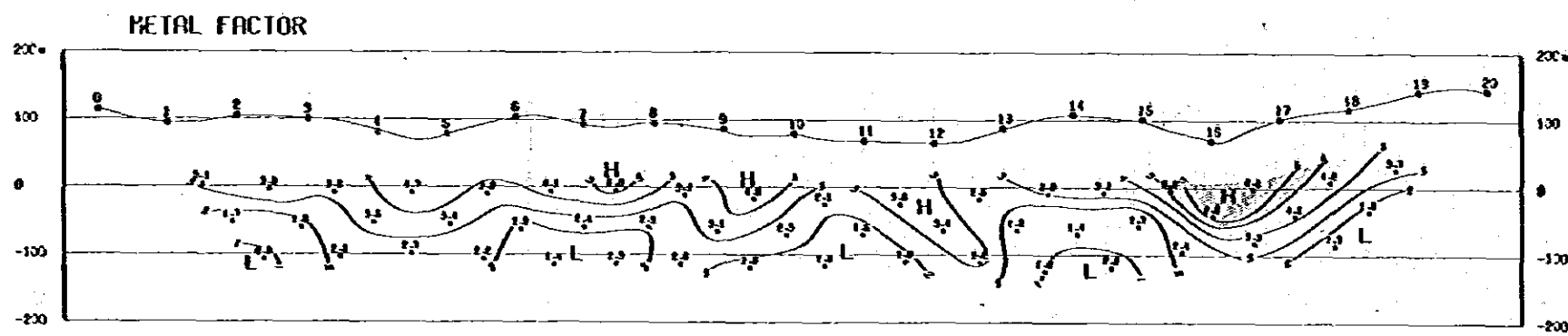
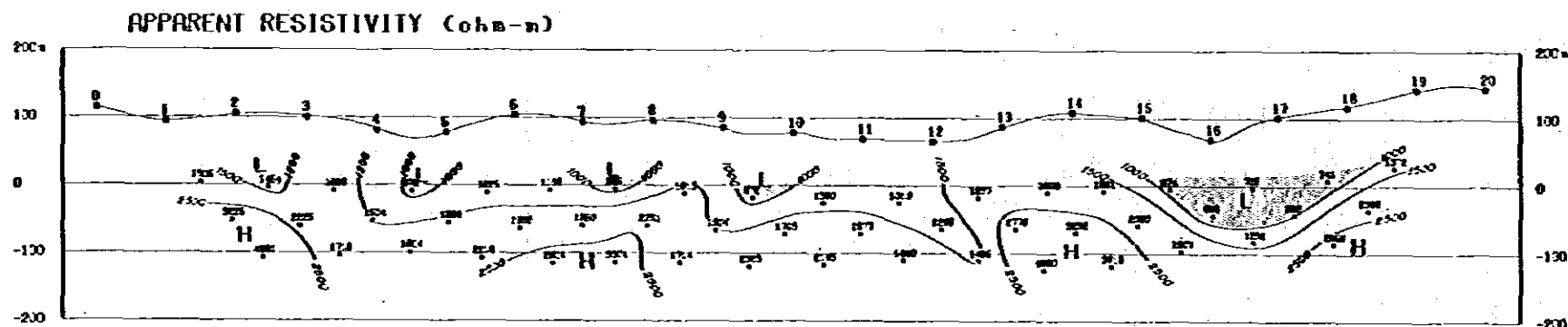
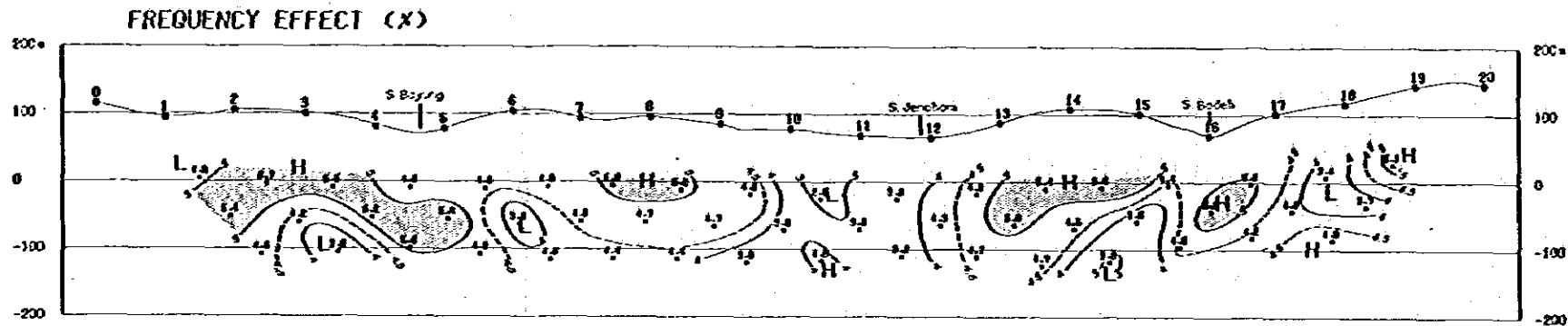


LINE H



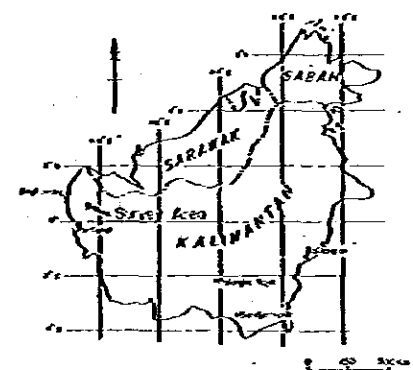
LEGEND

- FE**
- > 6 %
 - > 5 %
- AR**
- < 500 ohm-m
 - < 1000 ohm-m
- MF**
- > 8
 - > 5

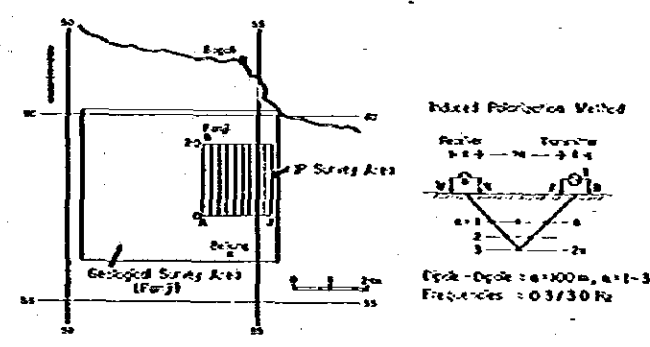
METAL MINING AGENCY OF JAPAN DIRECTORATE OF MINERAL RESOURCES
 JAPAN INTERNATIONAL COOPERATION AGENCY DIRECTORATE GENERAL OF MINES AND ENERGY
 MINISTRY OF MINES AND ENERGY

METALLIC MINERAL EXPLORATION SURVEY IN WEST KALIMANTAN INDONESIA (GEOPHYSICAL SURVEY) IP PSEUDO-SECTIONS LINE H

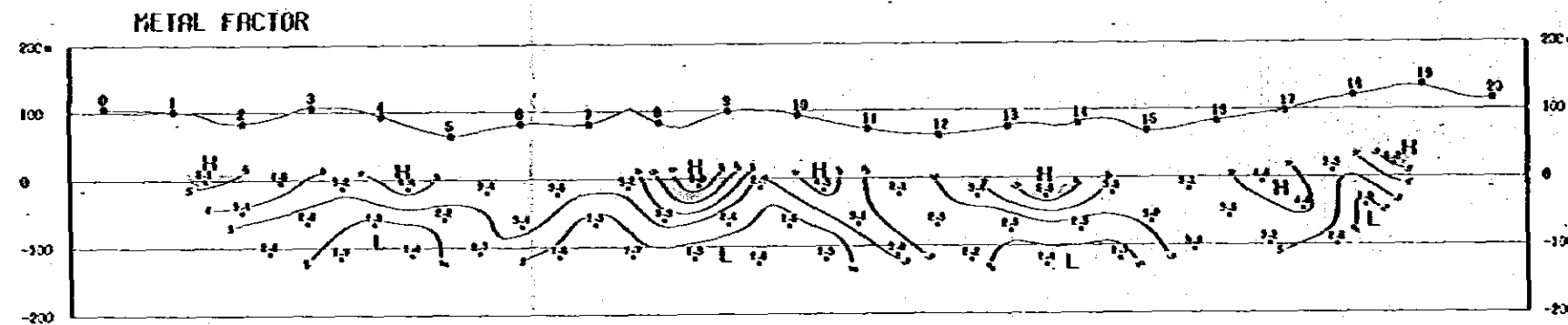
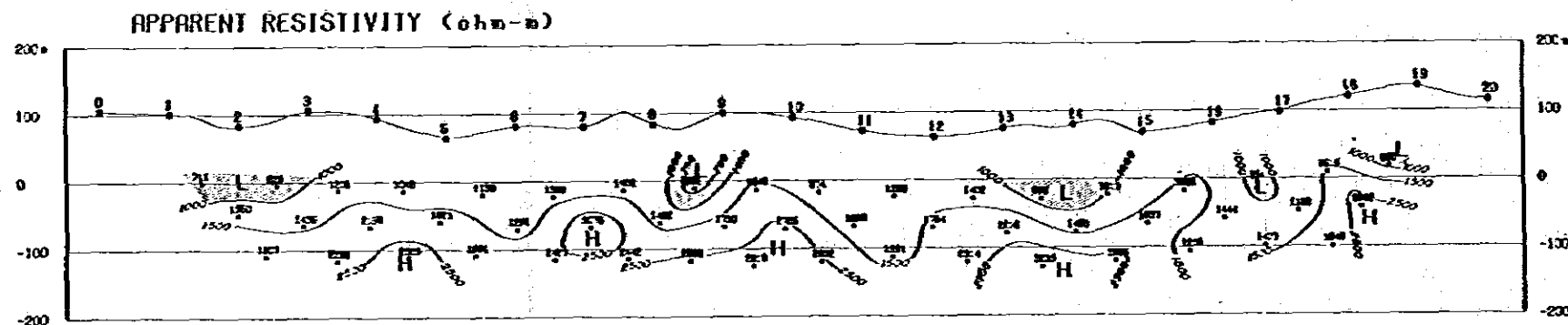
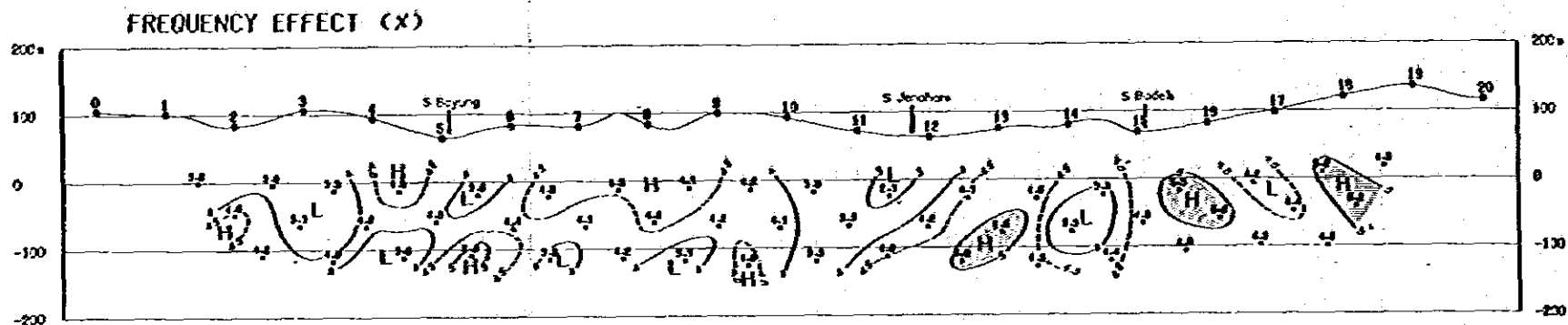
Scale 1:5,000



January 1952



LINE I



LEGEND

FE

- > 6 %
- > 5 %

AR

- < 500 ohm-m
- < 1000 ohm-m

MF

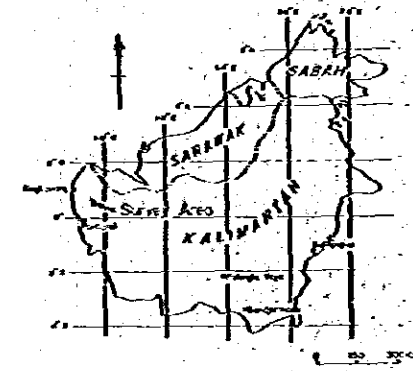
- > 8
- > 5

METAL MINING AGENCY OF JAPAN
JAPAN INTERNATIONAL
COOPERATION AGENCY

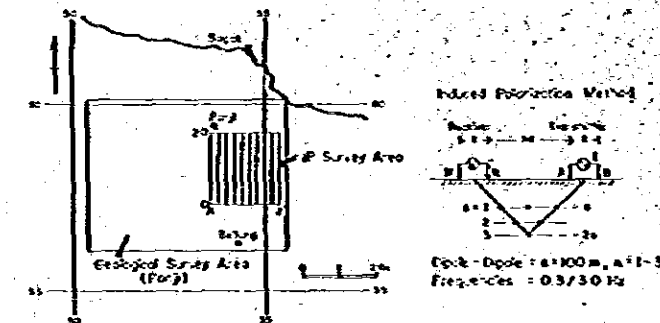
DIRECTORATE OF MINERAL
RESOURCES
DIRECTORATE GENERAL
OF M.A.R.S.
MINISTRY OF MINES
AND ENERGY

METALLIC MINERAL EXPLORATION SURVEY
IN
WEST KALIMANTAN INDONESIA
(GEOPHYSICAL SURVEY)
IP PSEUDO-SECTIONS
LINE I

Scale 1:5,000

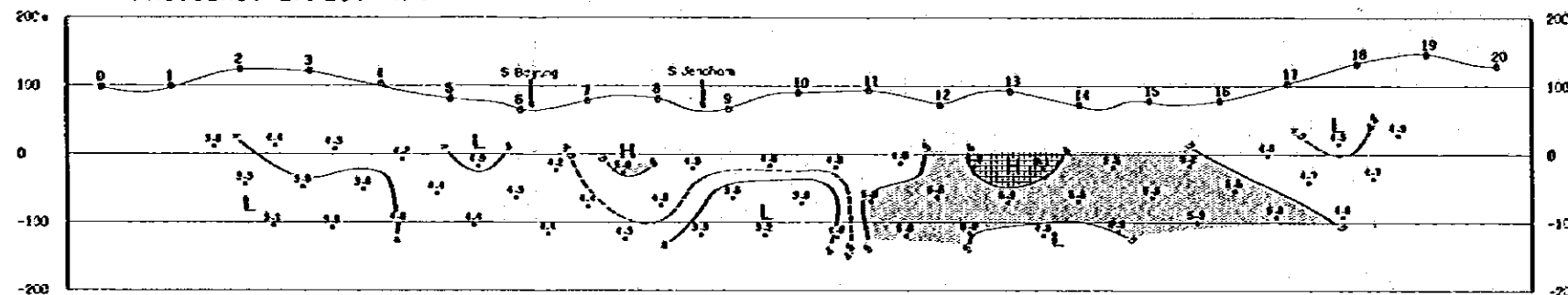


January 1962

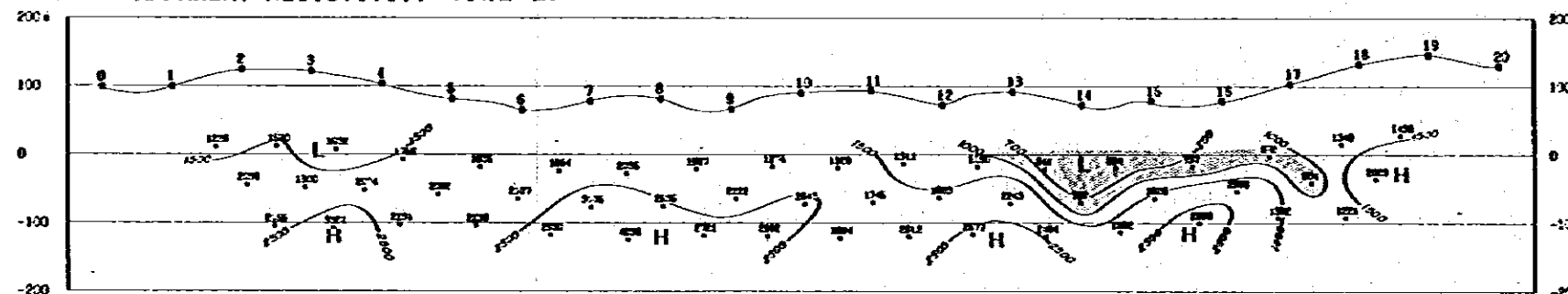


LINE J

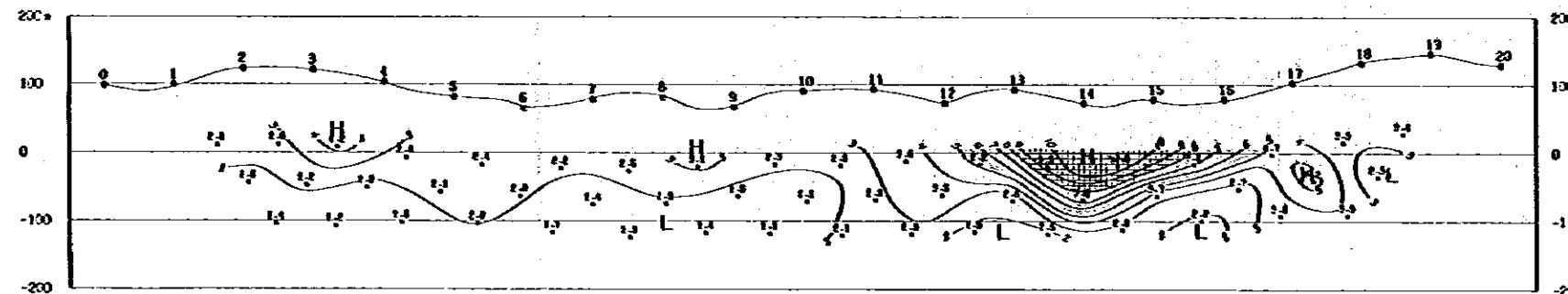
FREQUENCY EFFECT (X)



APPARENT RESISTIVITY (ohm-m)

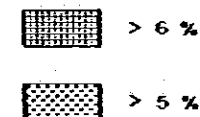


METAL FACTOR

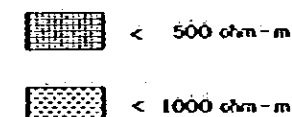


LEGEND

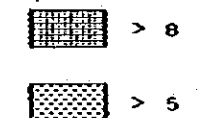
FE



AR



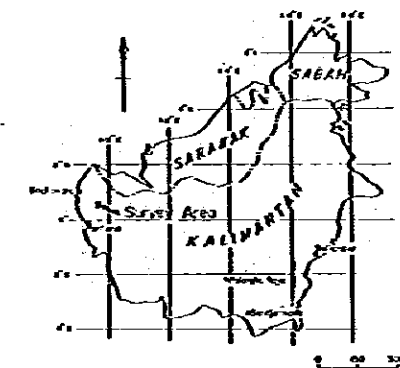
MF



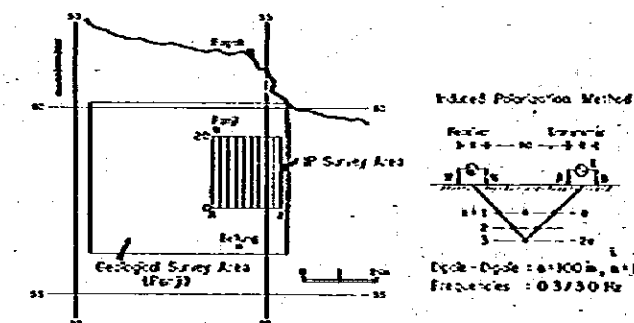
METAL MINING AGENCY OF JAPAN DIRECTORATE OF MINERAL RESOURCES
 JAPAN INTERNATIONAL COOPERATION AGENCY DIRECTORATE GENERAL OF M.I.E.S.
 MINISTRY OF MINES AND ENERGY

METALLIC MINERAL EXPLORATION SURVEY
 IN
 WEST KALIMANTAN INDONESIA
 (GEOPHYSICAL SURVEY)
 IP PSEUDO-SECTIONS
 LINE J

Scale 1:5,000



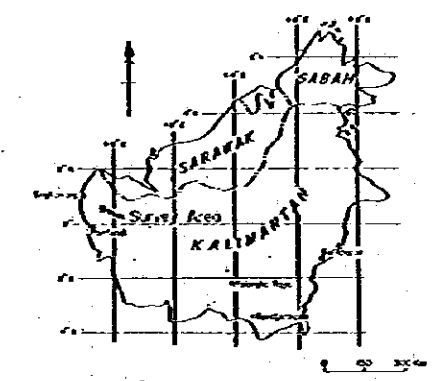
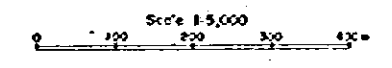
January - 1982



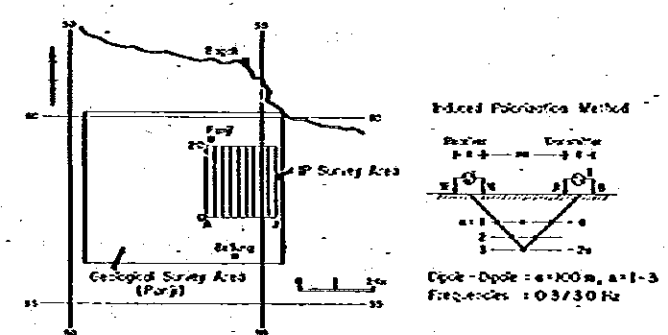
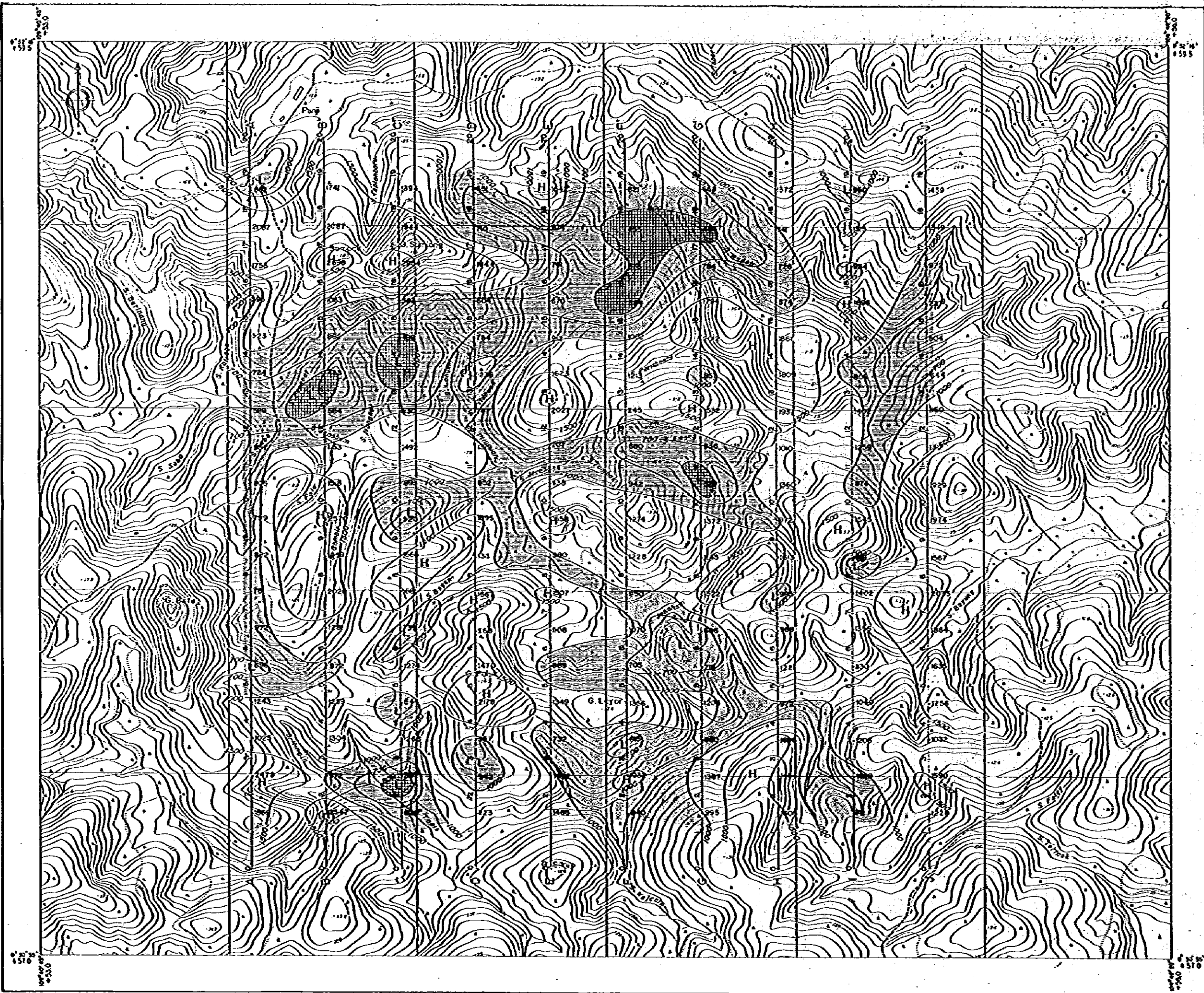
METAL MINING AGENCY OF JAPAN
 JAPAN INTERNATIONAL COOPERATION AGENCY
 DIRECTORATE OF MINERAL RESOURCES
 DIRECTORATE GENERAL OF MINES
 MINISTRY OF MINES AND ENERGY

METALLIC MINERAL EXPLORATION SURVEY
 IN
 WEST KALIMANTAN INDONESIA
 (GEOPHYSICAL SURVEY)

IP PLAN MAP
 APPARENT RESISTIVITY $\rho_a = 1$



January - 1962



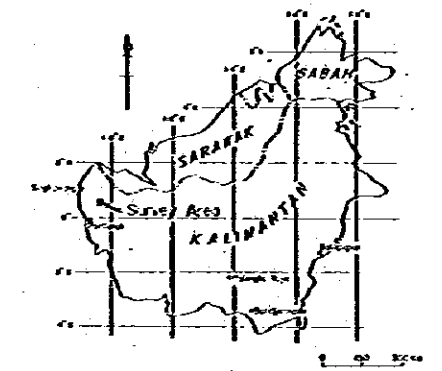
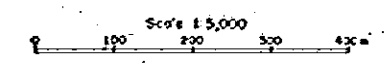
LEGEND

- AR
- < 500 ohm-m
- < 1000 ohm-m

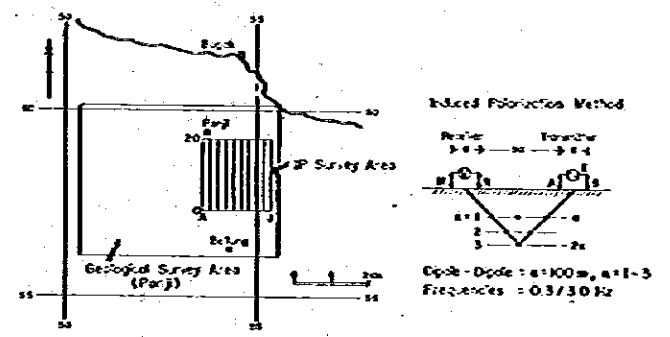
METAL MINING AGENCY OF JAPAN DIRECTORATE OF MINERAL RESOURCES
 JAPAN INTERNATIONAL DIRECTORATE GENERAL OF MINES
 COOPERATION AGENCY MINISTRY OF MINES AND ENERGY

METALLIC MINERAL EXPLORATION SURVEY
 IN
 WEST KALIMANTAN INDONESIA
 (GEOPHYSICAL SURVEY)

IP PLAN MAP
 APPARENT RESISTIVITY $n=3$

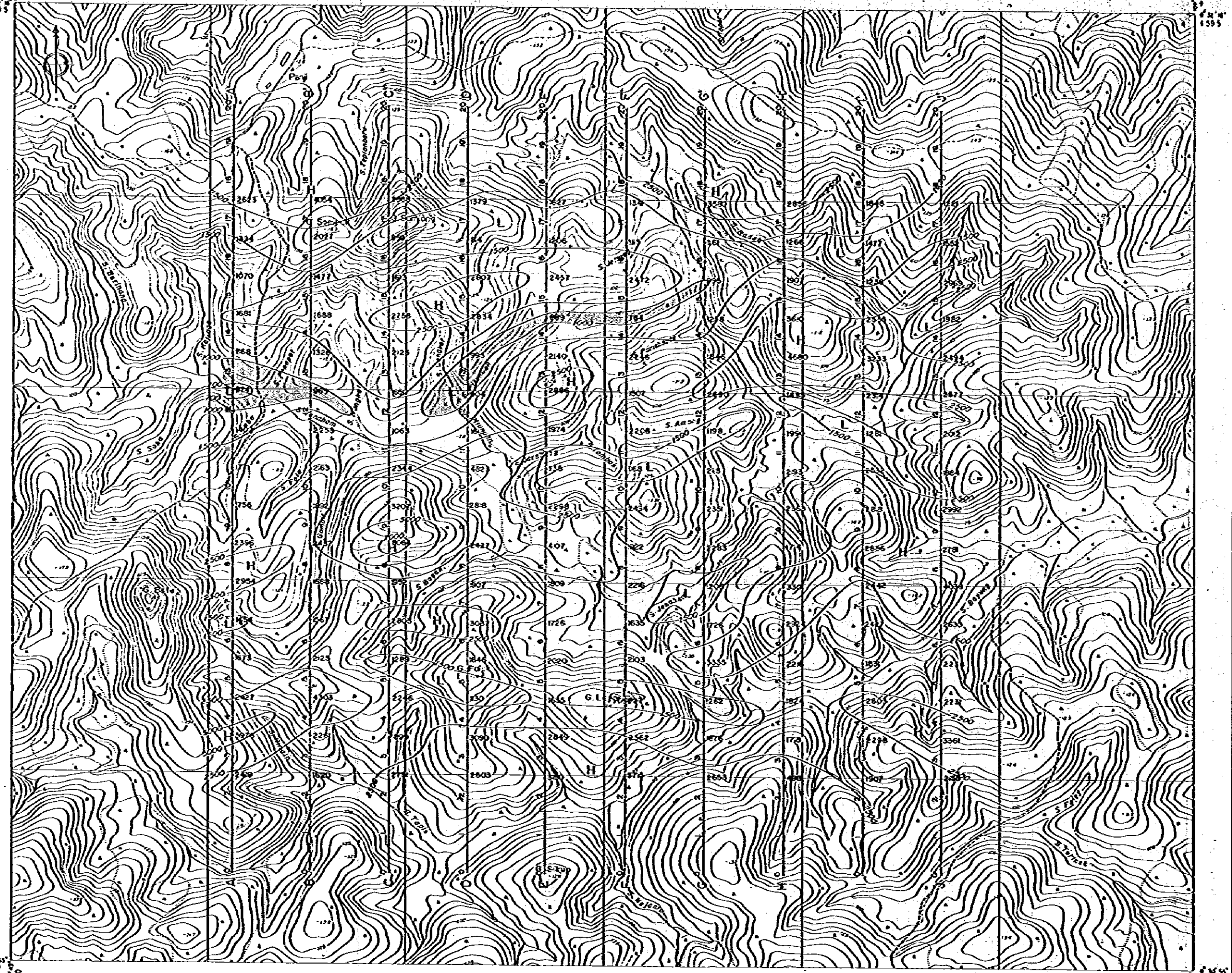


January - 1962



LEGEND

- AR
- < 500 ohm-m
 - < 1000 ohm-m



137° 35' E

137° 50' E

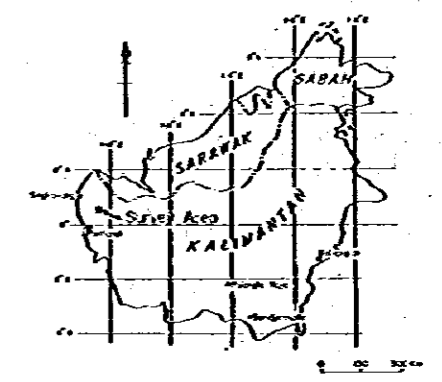
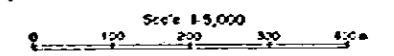
137° 35' E

137° 50' E

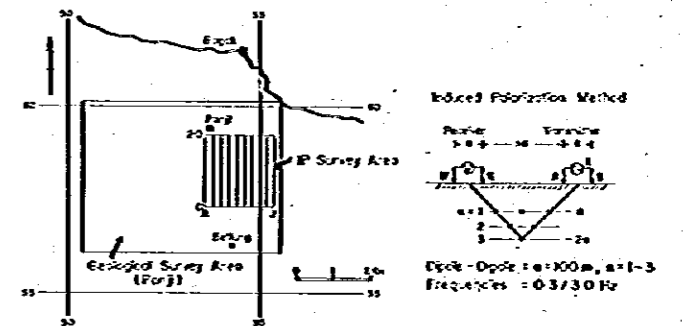
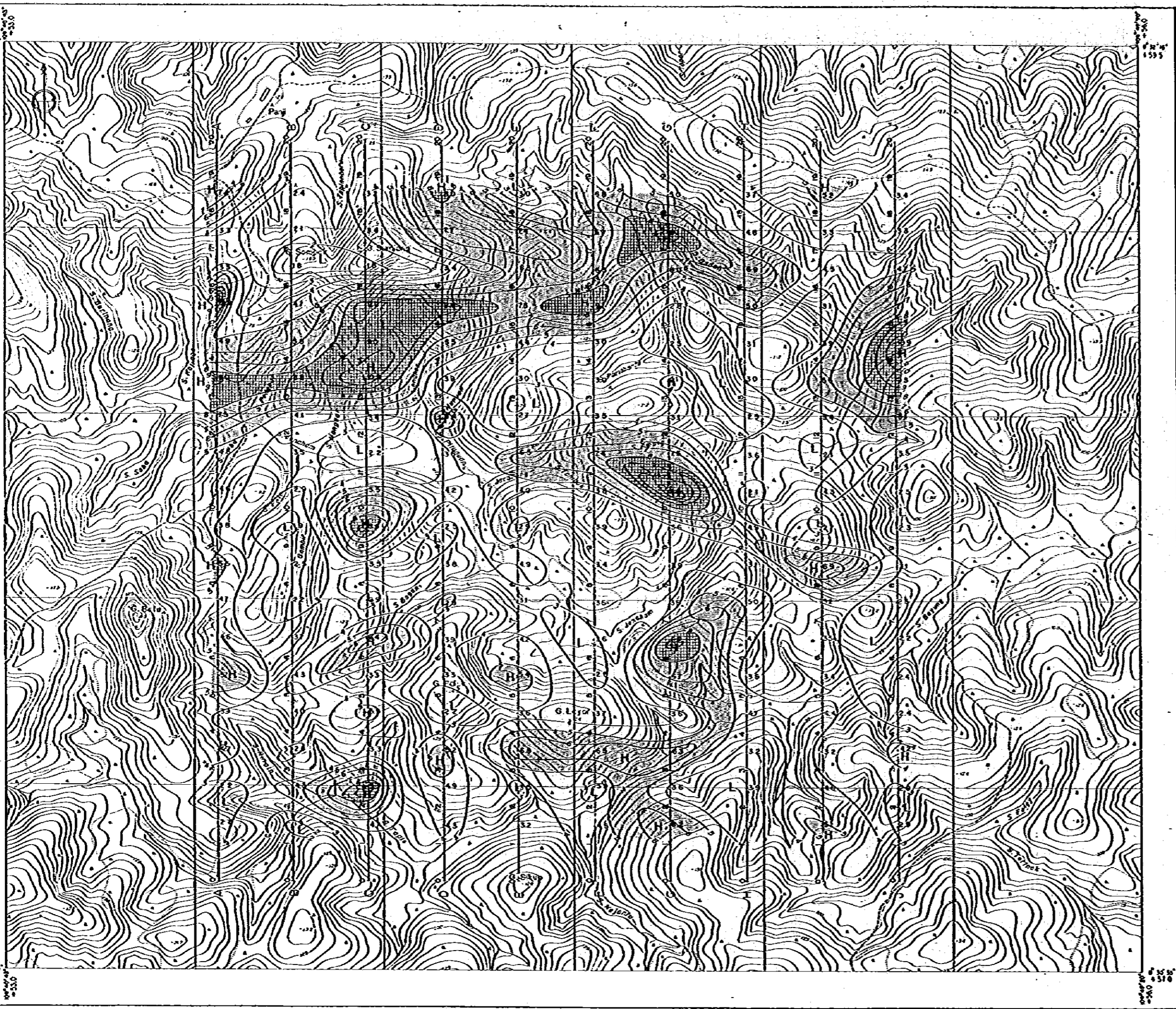
METAL MINING AGENCY OF JAPAN
 JAPAN INTERNATIONAL COOPERATION AGENCY
 DIRECTORATE OF MINERAL RESOURCES
 DIRECTORATE GENERAL OF M.N.E.S
 MINISTRY OF MINES AND ENERGY

METALLIC MINERAL EXPLORATION SURVEY
 IN
 WEST KALIMANTAN (INDONESIA)
 (GEOPHYSICAL SURVEY)

IP PLAN MAP
 METAL FACTOR $n = 1$



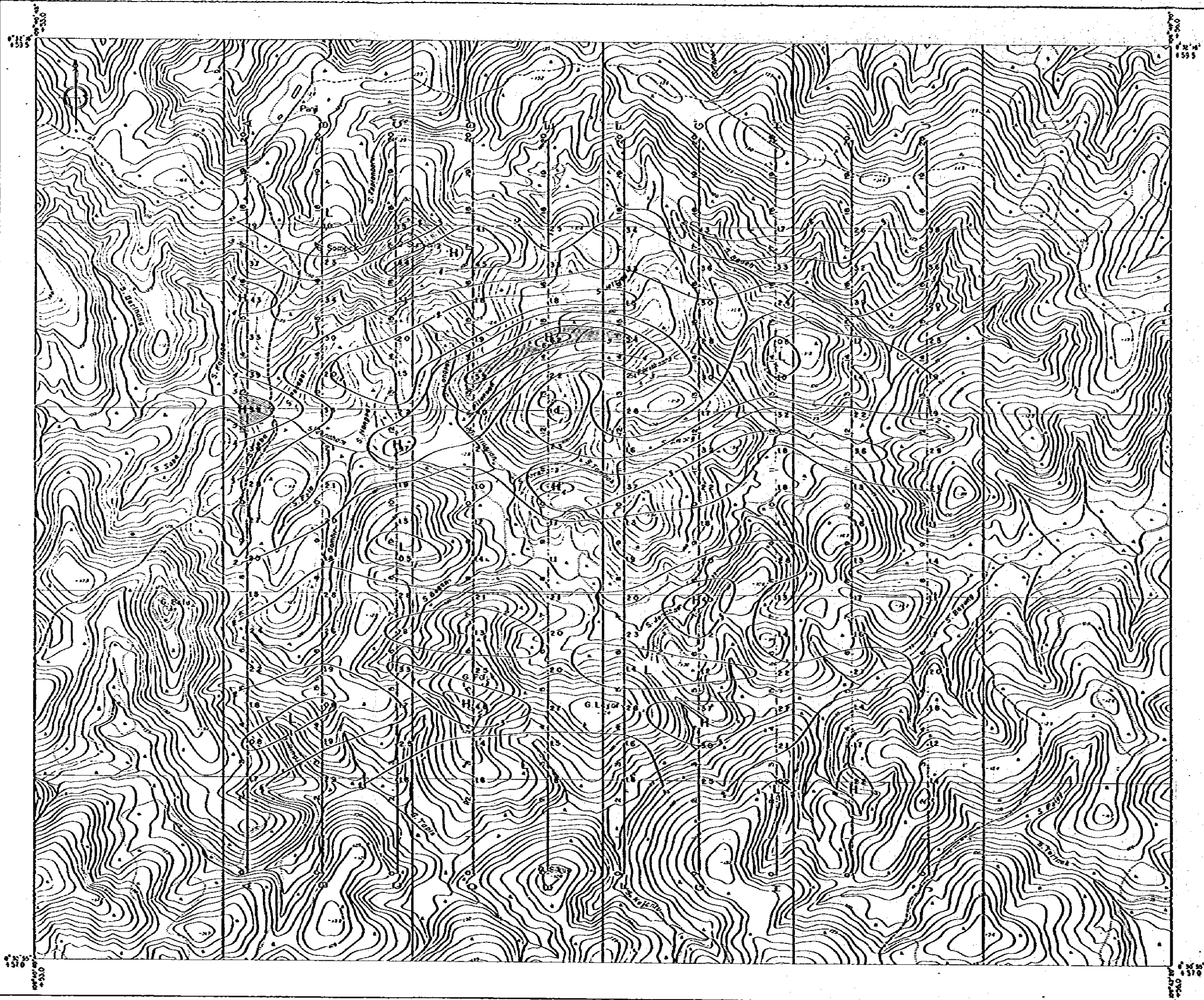
January - 1962



LEGEND

- MF
- > 8
 - > 5

PANJI



PL-4-17

METAL MINING AGENCY OF JAPAN
JAPAN INTERNATIONAL COOPERATION AGENCY

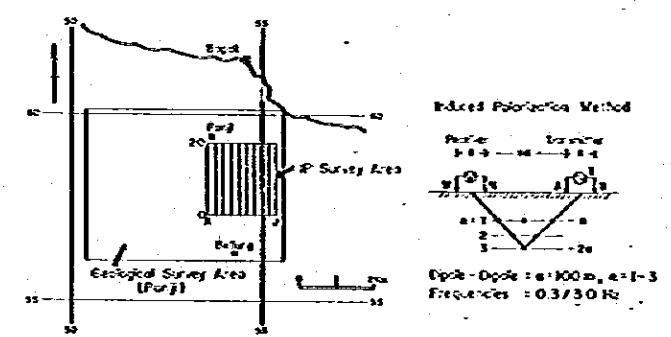
DIRECTORATE OF MINERAL RESOURCES
DIRECTORATE GENERAL OF MINES
MINISTRY OF MINES AND ENERGY

METALLIC MINERAL EXPLORATION SURVEY
IN
WEST KALIMANTAN INDONESIA
(GEOPHYSICAL SURVEY)

IP PLAN MAP
METAL FACTOR $n=3$

Scale 1:5,000

January 1982



LEGEND

MF	> 8
MF	> 5

