

2

REPUBLIC OF INDONESIA  
REPORT ON GEOLOGICAL SURVEY  
OF  
WEST KALIMANTAN

PHASE III

JANUARY 1982

METAL MINING AGENCY OF JAPAN  
JAPAN INTERNATIONAL COOPERATION AGENCY

REPUBLIC OF INDONESIA  
REPORT ON GEOLOGICAL SURVEY  
OF WEST KALIMANTAN

PHASE III  
JAN. 1982

MMAJ  
JICA

108  
66.1  
MPN

MPN
<del>CR(2)</del>
88-89



国際協力事業団	
受入 月日 84. 9. 19	108:
登録No. 09727	6617 MPNI

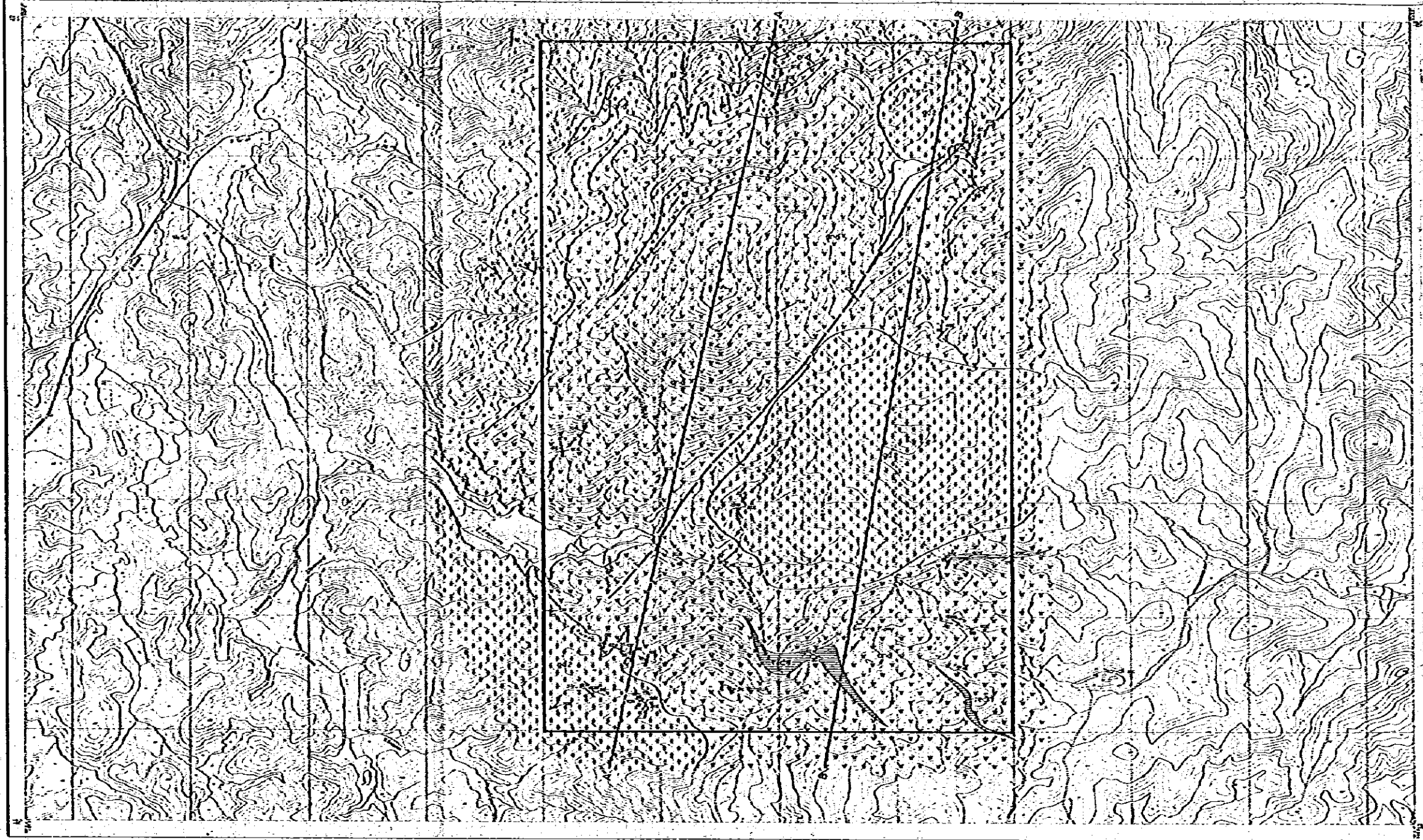
JICA LIBRARY



1034436143



G. SELAKEAN

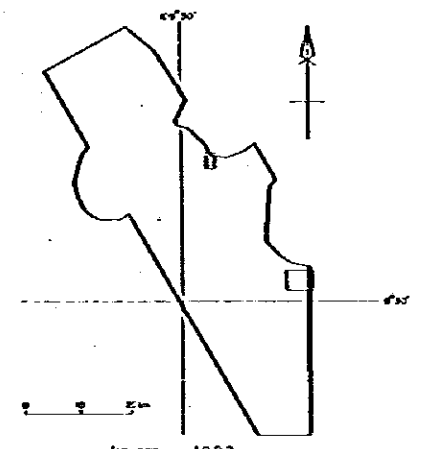
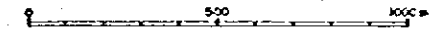


METAL MINING AGENCY OF JAPAN  
 JAPAN INTERNATIONAL  
 COOPERATION AGENCY

DIRECTORATE OF MINERAL  
 RESOURCES  
 DIRECTORATE GENERAL  
 OF MINES  
 MINISTRY OF MINES  
 AND ENERGY  
 REPUBLIC OF INDONESIA

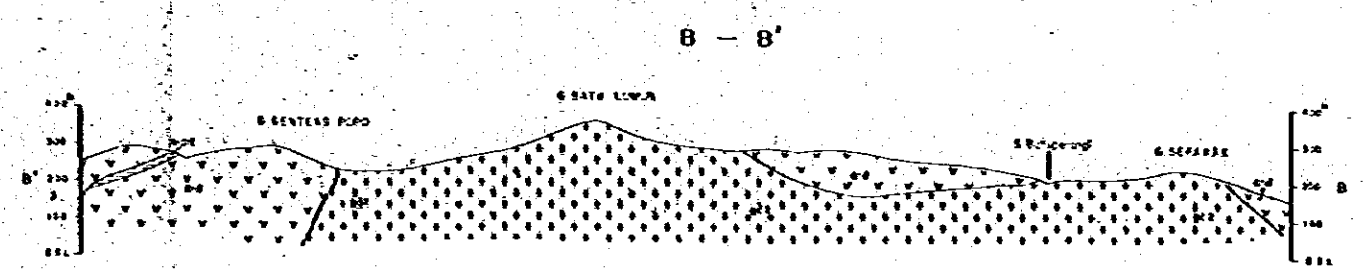
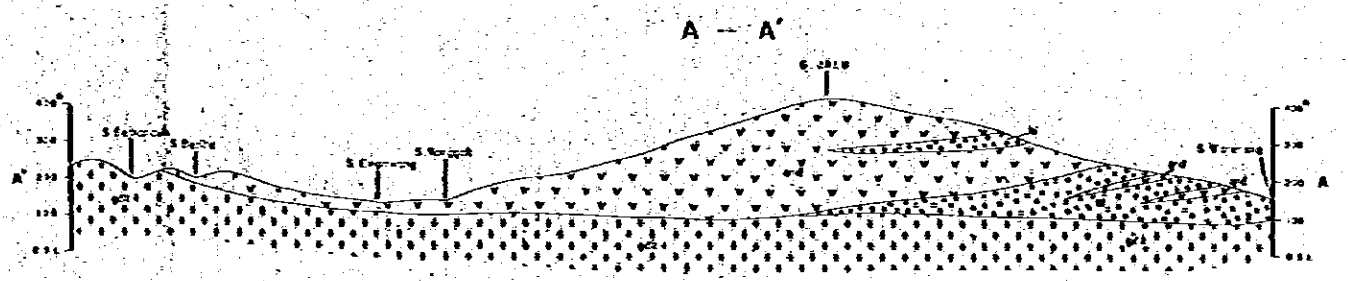
METALLIC MINERAL EXPLORATION SURVEY  
 IN  
 WEST KALIMANTAN INDONESIA  
 GEOLOGICAL MAP AND GEOLOGICAL PROFILE  
 OF DETAILED SURVEY AREA  
 (SELAKEAN AREA)

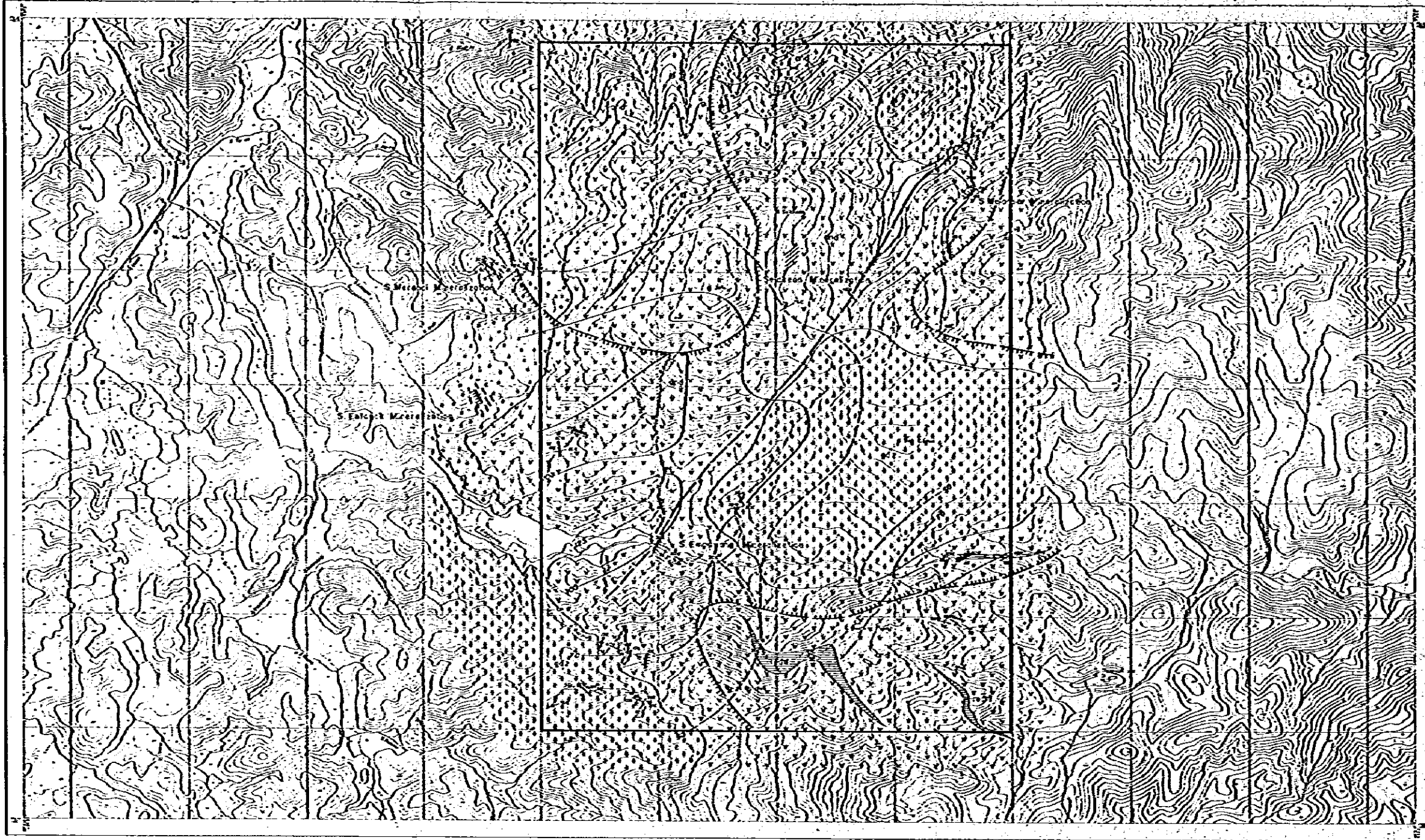
Scale 1:10,000



LEGEND

- Volcanic and Sedimentary rocks
- Quaternary
  - Gravel and Sand
- Jurassic-Cretaceous
  - Rhyolite Granite
- Jerk function
- Andesite red MFI
- Pyroclastic rock (andesitic MFI - top MFI partly dacitic MFI)
- Andesite (partly andesitic MFI)
- Strike and dip of bedding
- Joint
- Lineament interpreted in profiles
- A-A' Profile line





PL 5-2

METAL MINING AGENCY OF JAPAN  
 JAPAN INTERNATIONAL  
 COOPERATION AGENCY

DIRECTORATE OF MINERAL  
 RESOURCES  
 DIRECTORATE GENERAL  
 OF M.A.E.S.  
 MINISTRY OF MINES  
 AND ENERGY  
 REPUBLIC OF INDONESIA

**METALLIC MINERAL EXPLORATION SURVEY**  
 IN  
**WEST KALIMANTAN INDONESIA**  
**MAP OF RELATIONS BETWEEN**  
**GEOLOGICAL STRUCTURE AND MINERALIZATION**  
**(SELAKEAN AREA)**  
 Scale 1:10,000

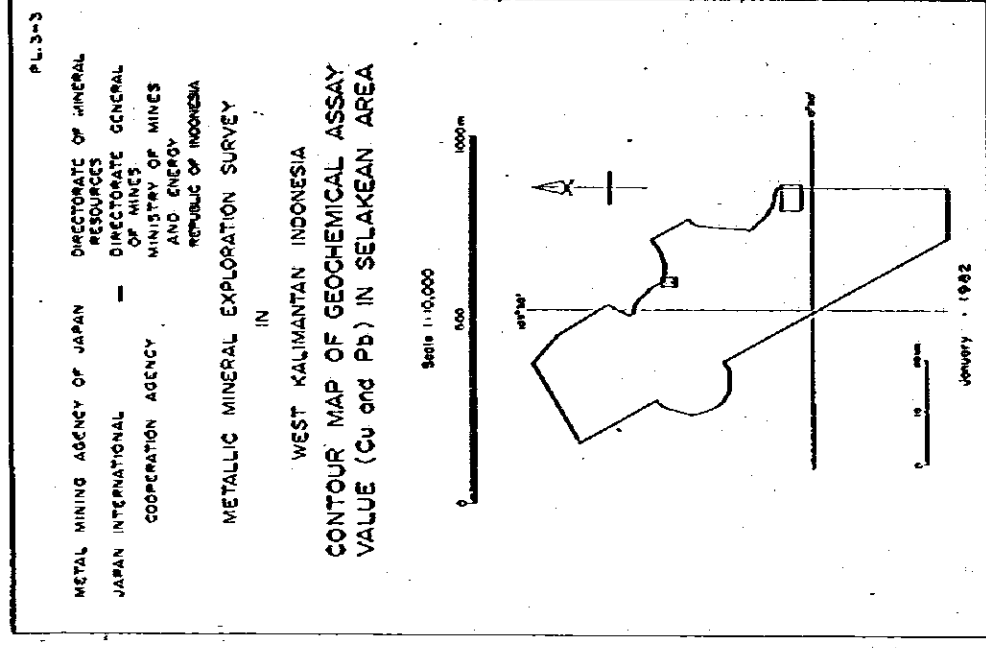
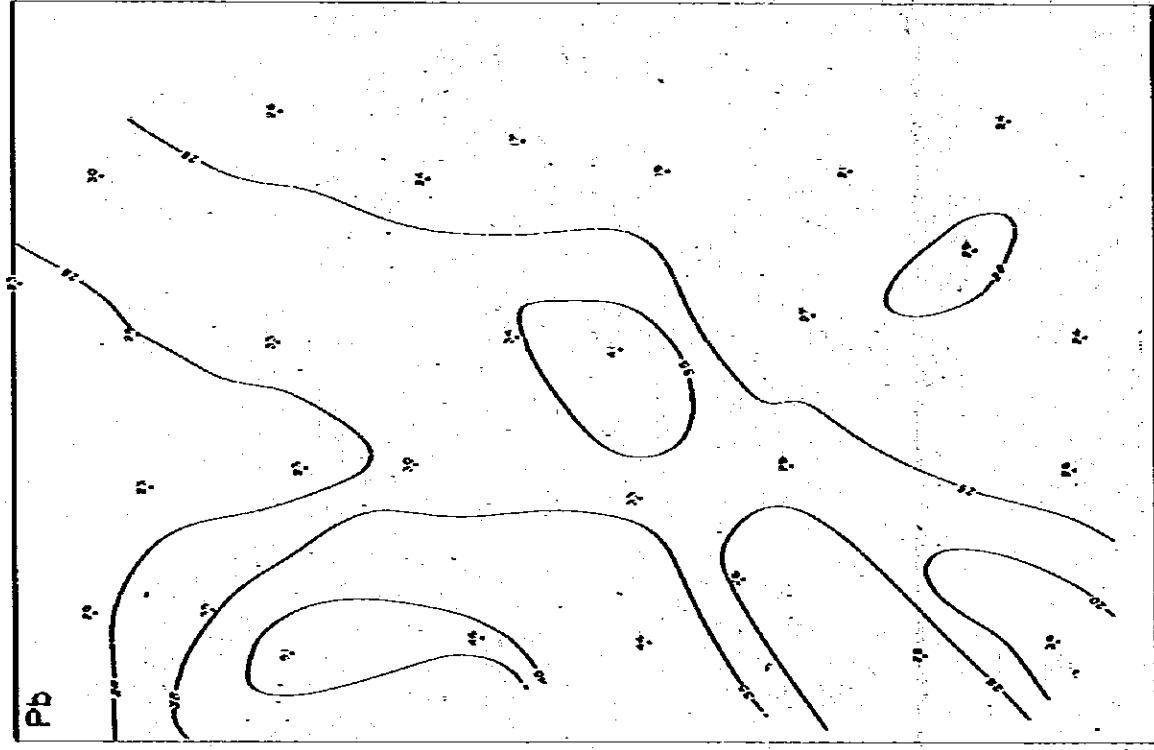
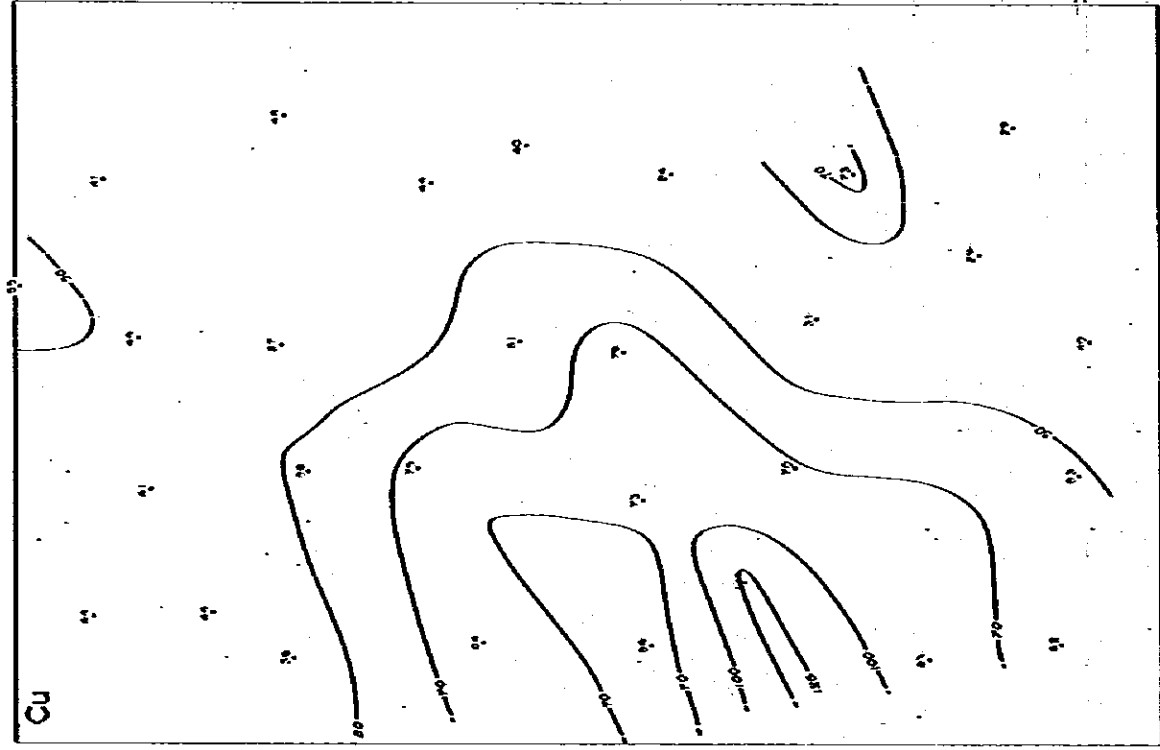
January - 1962

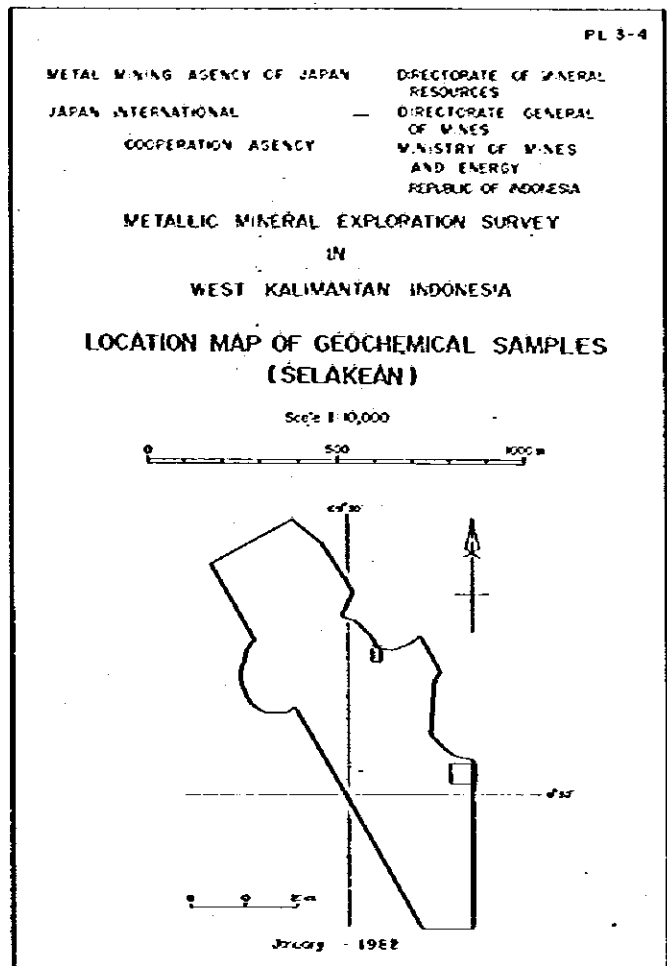
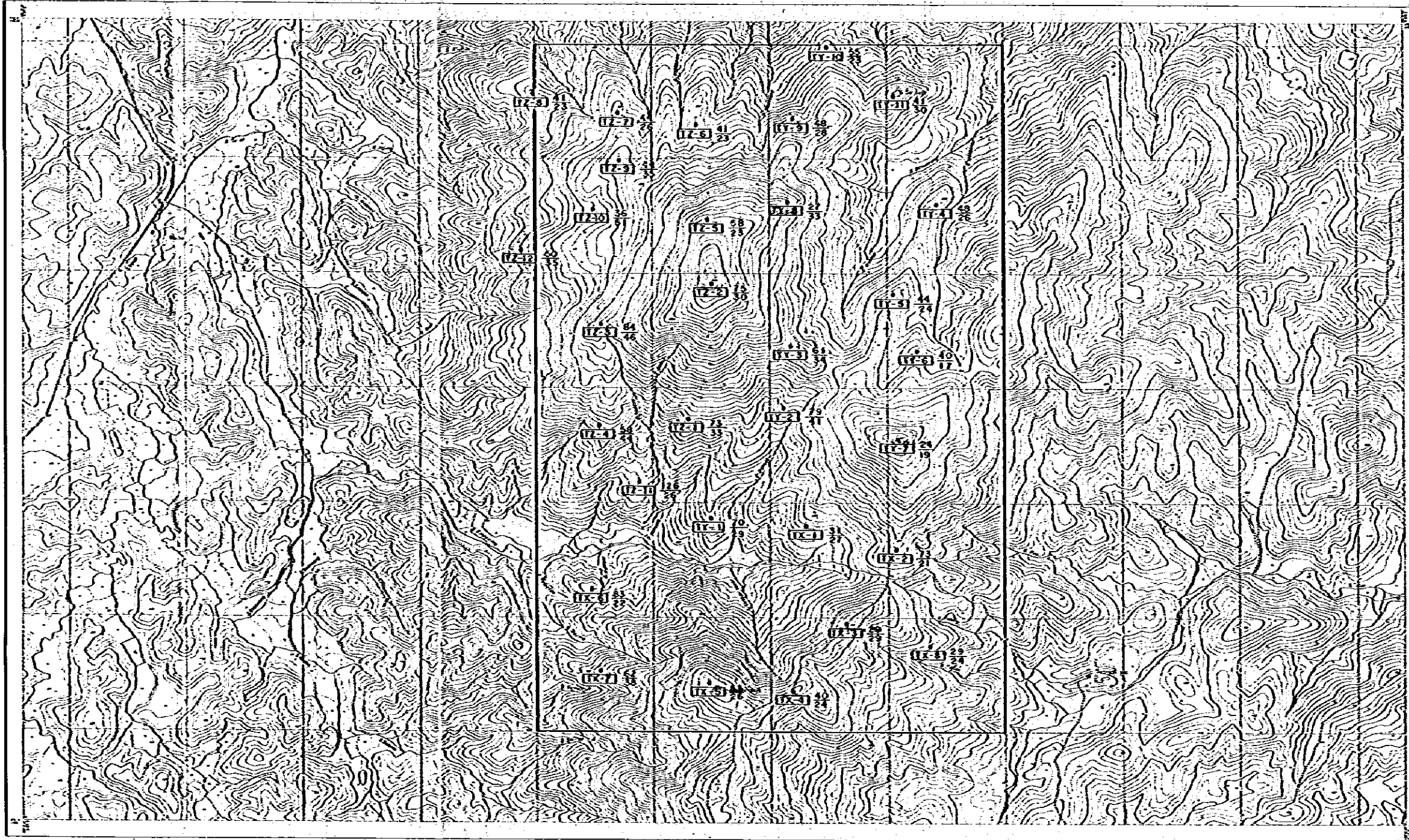
**LEGEND**

- |                                                    |                                                    |                                     |
|----------------------------------------------------|----------------------------------------------------|-------------------------------------|
| Volcanic and Se-Secondary rocks                    | Igneous rocks                                      | Strike and dip of strata            |
| Dimentary                                          |                                                    | Fault                               |
| □ Gneiss and Silt                                  |                                                    | Unconformity (stepped in depth)     |
| Archaic - Cretaceous                               | □ Pyro Granulites                                  | Pyro dissemination zone             |
| Red Formations                                     | □ Arkh. mt. Mt                                     | Welded surface on mt. area          |
| Ark. mt. mt                                        | □ Arkh. mt. (Arkh. mt. - Arkh. mt. 5075 arch. mt.) | Fracture in place with sulphide ore |
| □ Arkh. mt. (Arkh. mt. - Arkh. mt. 5075 arch. mt.) | □ Arkh. mt. (Arkh. mt. - Arkh. mt. 5075 arch. mt.) | Argill. alteration and clay mt.     |
| □ Arkh. mt. (Arkh. mt. - Arkh. mt. 5075 arch. mt.) |                                                    | Center line of protected area (G)   |

Mineralization	SiO <sub>2</sub> %	Al <sub>2</sub> O <sub>3</sub> %	Ag %	Cu %	Pb %	Zn %	As %	Sample No.
S. Eng. mt.	64	15	0.00	0.00	0.00	0.00	0.00	31-2
S. Eng. mt.	64	15	0.00	0.00	0.00	0.00	0.00	31-2
S. Eng. mt.	64	15	0.00	0.00	0.00	0.00	0.00	31-2

\* Sample for chip of 50 g. rock  
\* assay result from survey data (1960)



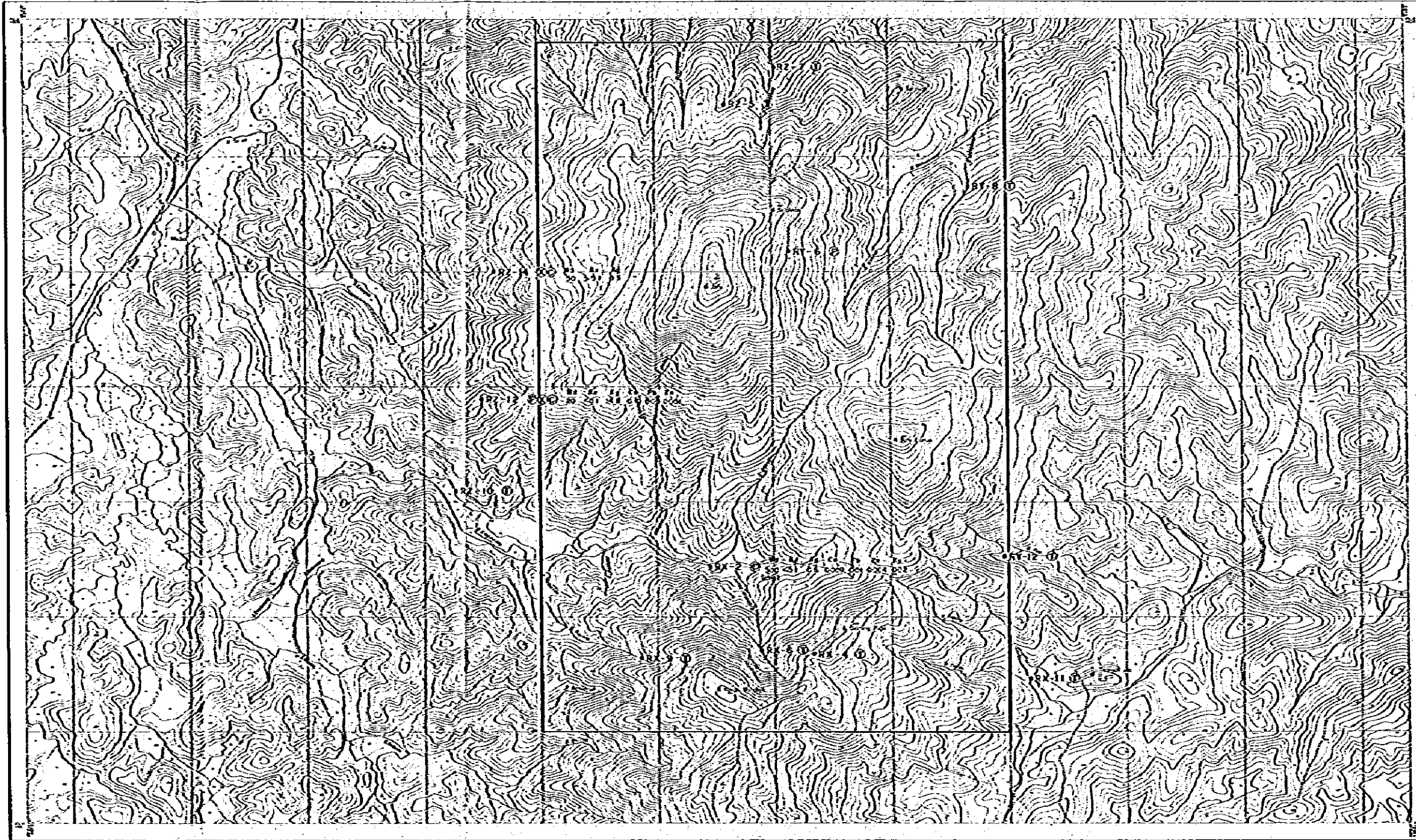


**LEGEND**

• (T-1) Location of Soil Sampling

$\frac{20}{30}$  Assay Result of  $\frac{20}{30}$

G. SELAKEAN

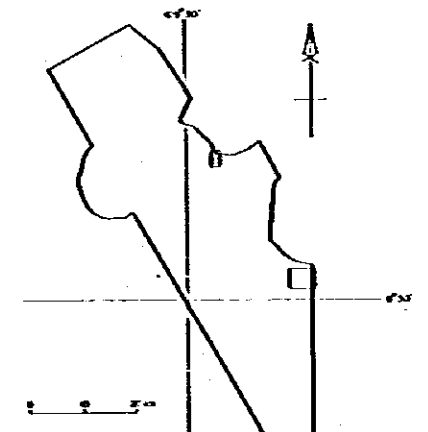
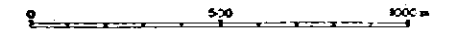


PL 3-5

METAL MINING AGENCY OF JAPAN      DIRECTORATE OF MINERAL RESOURCES  
 JAPAN INTERNATIONAL COOPERATION AGENCY      DIRECTORATE GENERAL OF M.I.A.  
 M.I.A.      MINISTRY OF MINES AND ENERGY  
 REPUBLIC OF INDONESIA

METALLIC MINERAL EXPLORATION SURVEY  
 IN  
 WEST KALIMANTAN INDONESIA  
 LOCATION MAP OF  
 ROCKS AND ORE SAMPLES TESTED  
 (SELAKEAN)

Scale 1:10,000



January - 1982

LEGEND

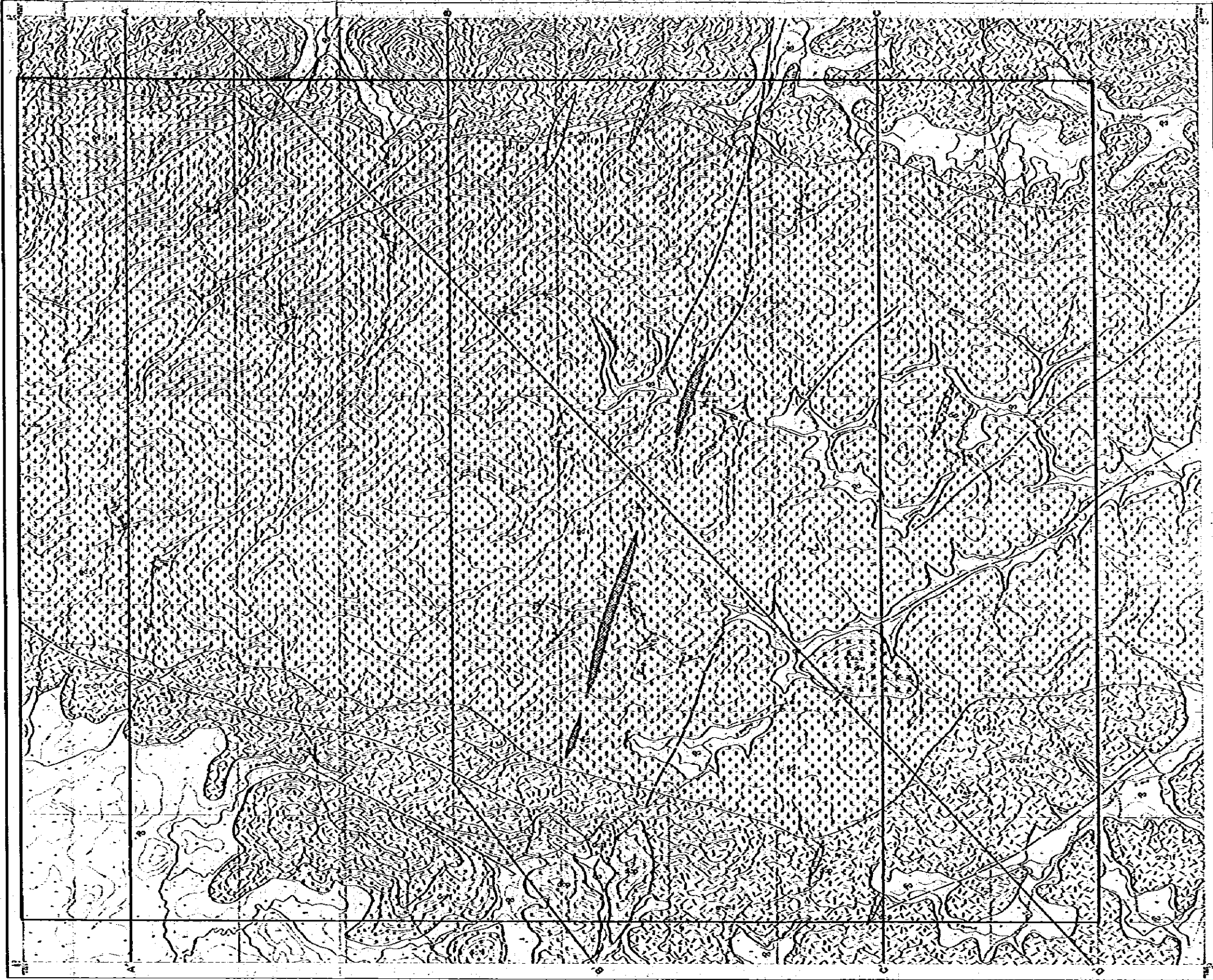
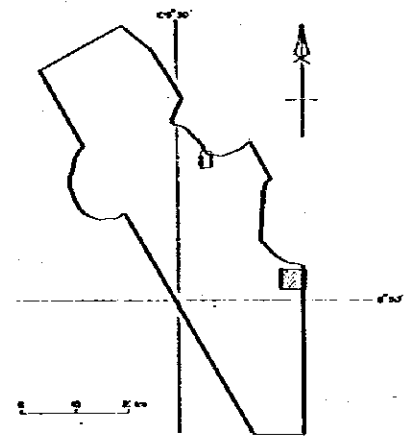
- [RT-24] Location of rock or ore sample tested
- ① Data sector
- ② Panned specimen
- ③ Chemical analysis for ore mineral
- ④ X-ray analysis

Result of chemical analysis  
 Wt% Fe<sup>2+</sup> Fe<sup>3+</sup> Cu<sup>2+</sup> Pb<sup>2+</sup> Zn<sup>2+</sup> As<sup>3+</sup>



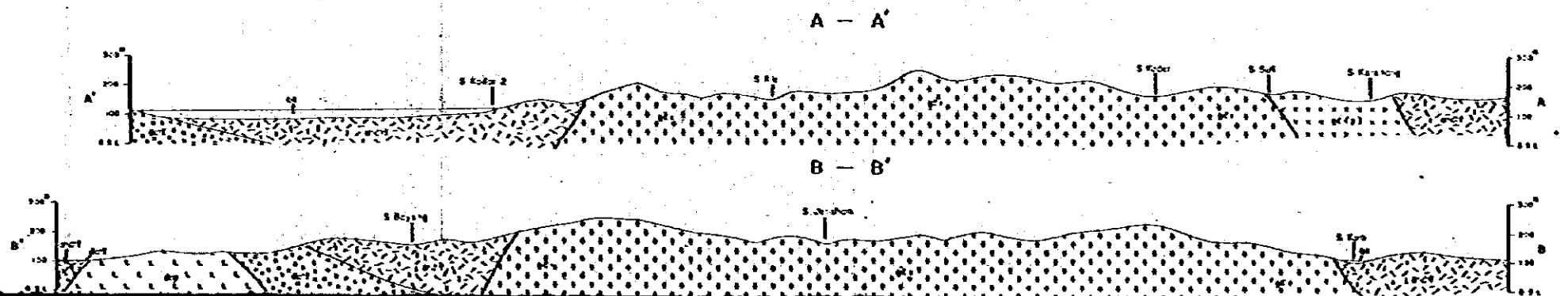
METAL MINING AGENCY OF JAPAN · DIRECTORATE OF MINERAL RESOURCES  
 JAPAN INTERNATIONAL COOPERATION AGENCY · DIRECTORATE GENERAL OF MINES AND ENERGY  
 REPUBLIC OF INDONESIA

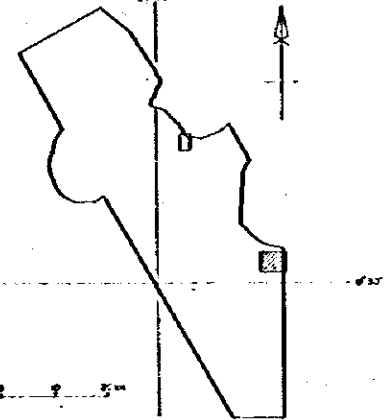
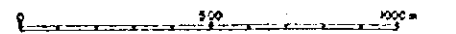
METALLIC MINERAL EXPLORATION SURVEY  
 IN  
 WEST KALIMANTAN INDONESIA  
 GEOLOGICAL MAP AND GEOLOGICAL PROFILE  
 OF DETAILED SURVEY AREA  
 (PANJI AREA)  
 Scale 1:10,000



**LEGEND**

<b>Volcanic and Sedimentary rocks</b>	<b>Igneous Rocks</b>
Quaternary	Diabase porphyry
Quaternary Gravel, Sand	Diorite
<b>Tertiary</b>	Quartz diorite
	Granodiorite (Porphyritic)
<b>Cretaceous</b>	Granodiorite (Gabbroic)
Jurassic	
Belanga Formation (andesitic tuff)	
Belanga Formation (basaltic tuff)	
Strike and dip of bedding	
Joint	
Lineament inferred by optical interpretation	
A—A' Profile line	

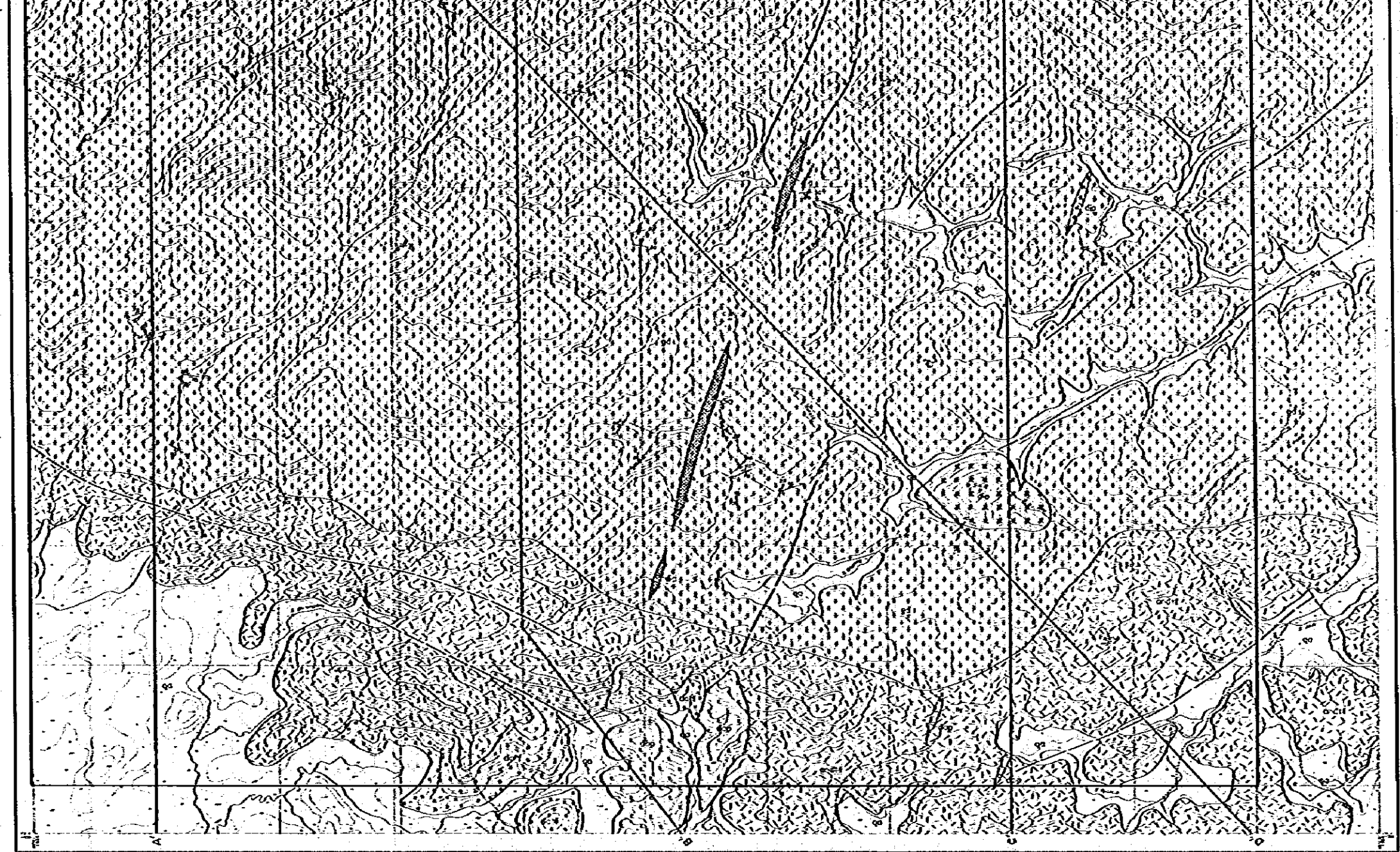




January 1952

### LEGEND

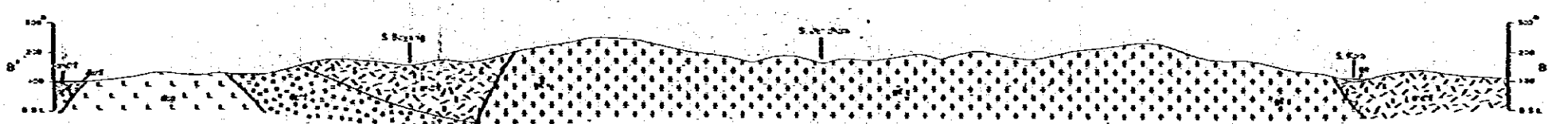
Volcanic and Sedimentary rocks		Igneous Rocks	
Quaternary		Quaternary	
	Gravel, Sand		Dacite porphyry
Tertiary			Diorite
			Quartz diorite
Cretaceous			Granite (Porphyry)
Jurassic			Granite (Sedimentary)
	Belongo Formation (Andesitic tuff)		
	Belongo Formation (Basaltic tuff)		
	Strike and dip of bedding		
	Joint		
	Lineament inferred by oblique interpretation		
	A-A' Profile line		



### A - A'



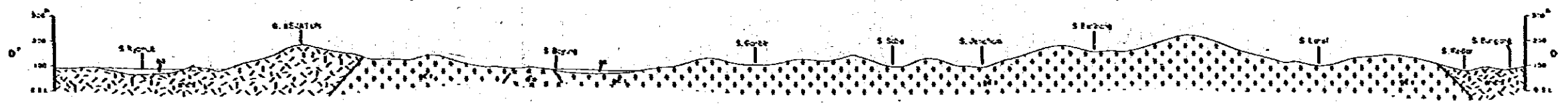
### B - B'



### C - C'

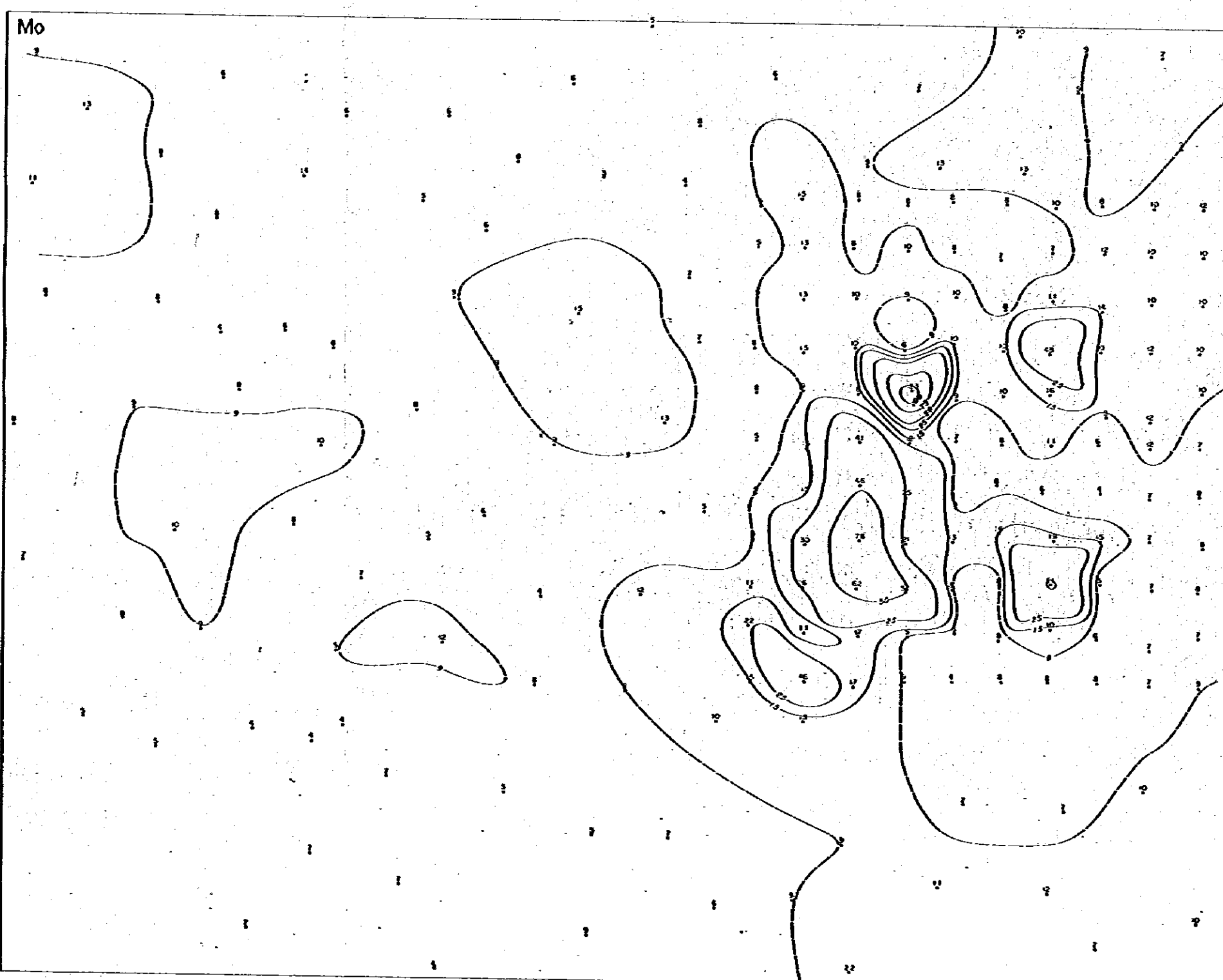
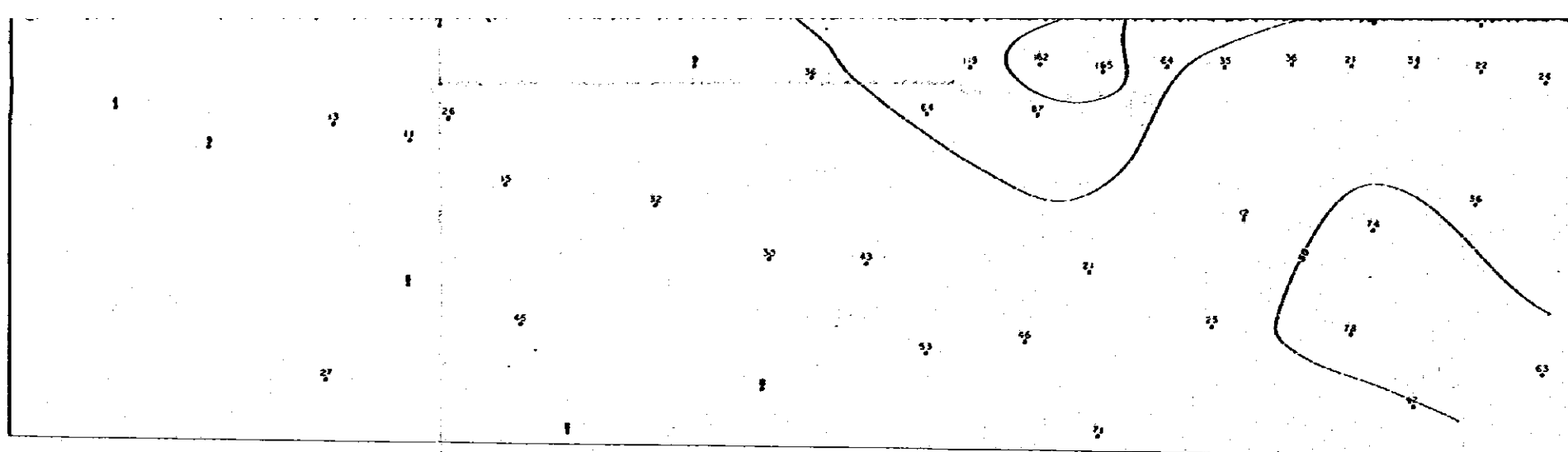


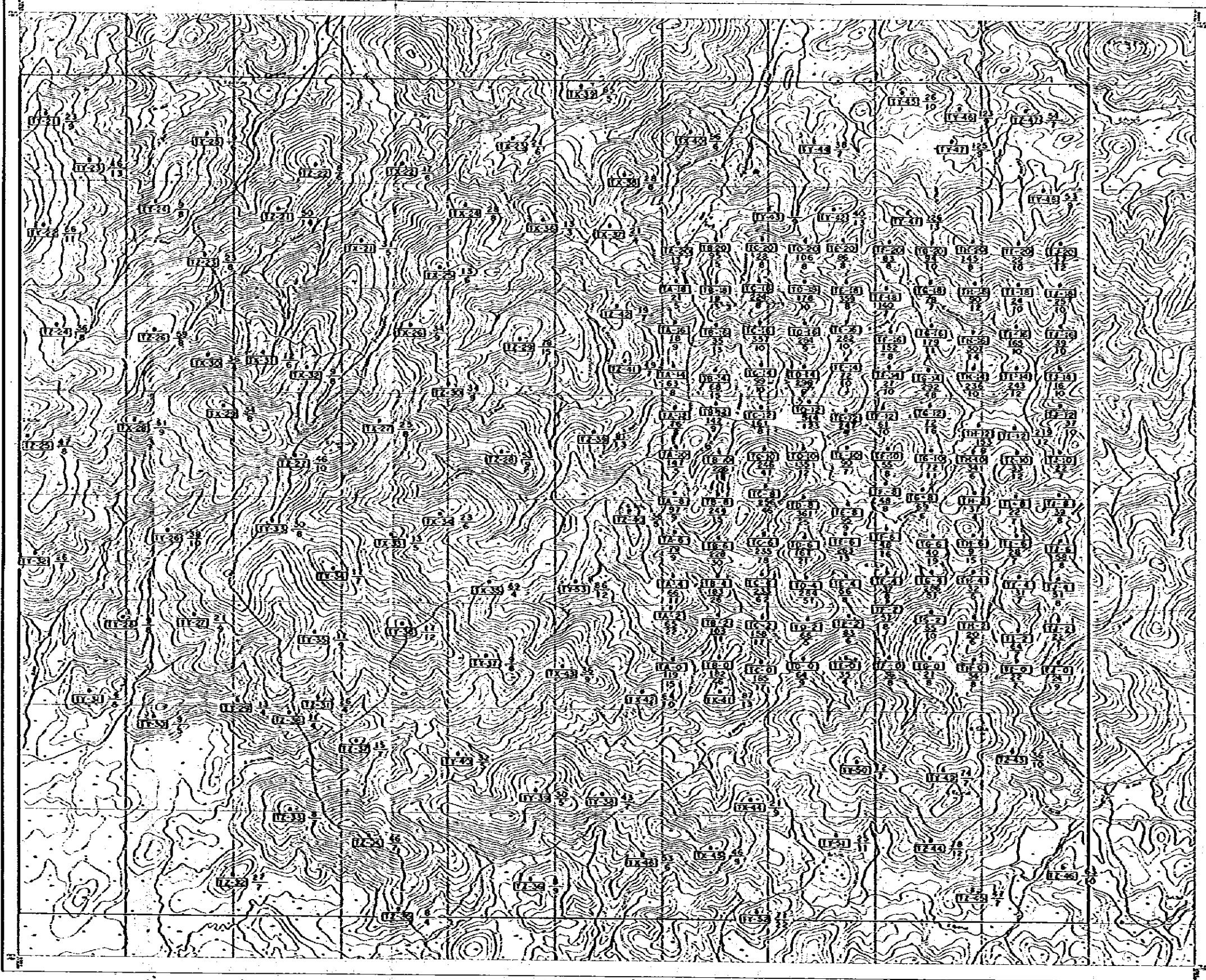
### D - D'





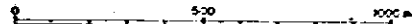


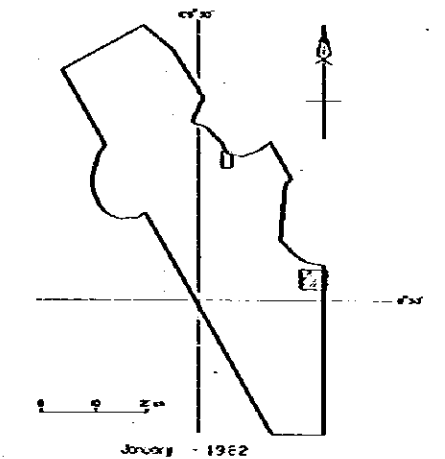




METAL MINING AGENCY OF JAPAN DIRECTORATE OF MINERAL RESOURCES  
 JAPAN INTERNATIONAL COOPERATION AGENCY DIRECTORATE GENERAL OF MINES  
 M. MINISTRY OF MINES AND ENERGY  
 REPUBLIC OF INDONESIA

METALLIC MINERAL EXPLORATION SURVEY  
 IN  
 WEST KALIMANTAN INDONESIA  
 LOCATION MAP OF GEOCHEMICAL SAMPLES  
 (PANJI AREA)

Scale 1:10,000  


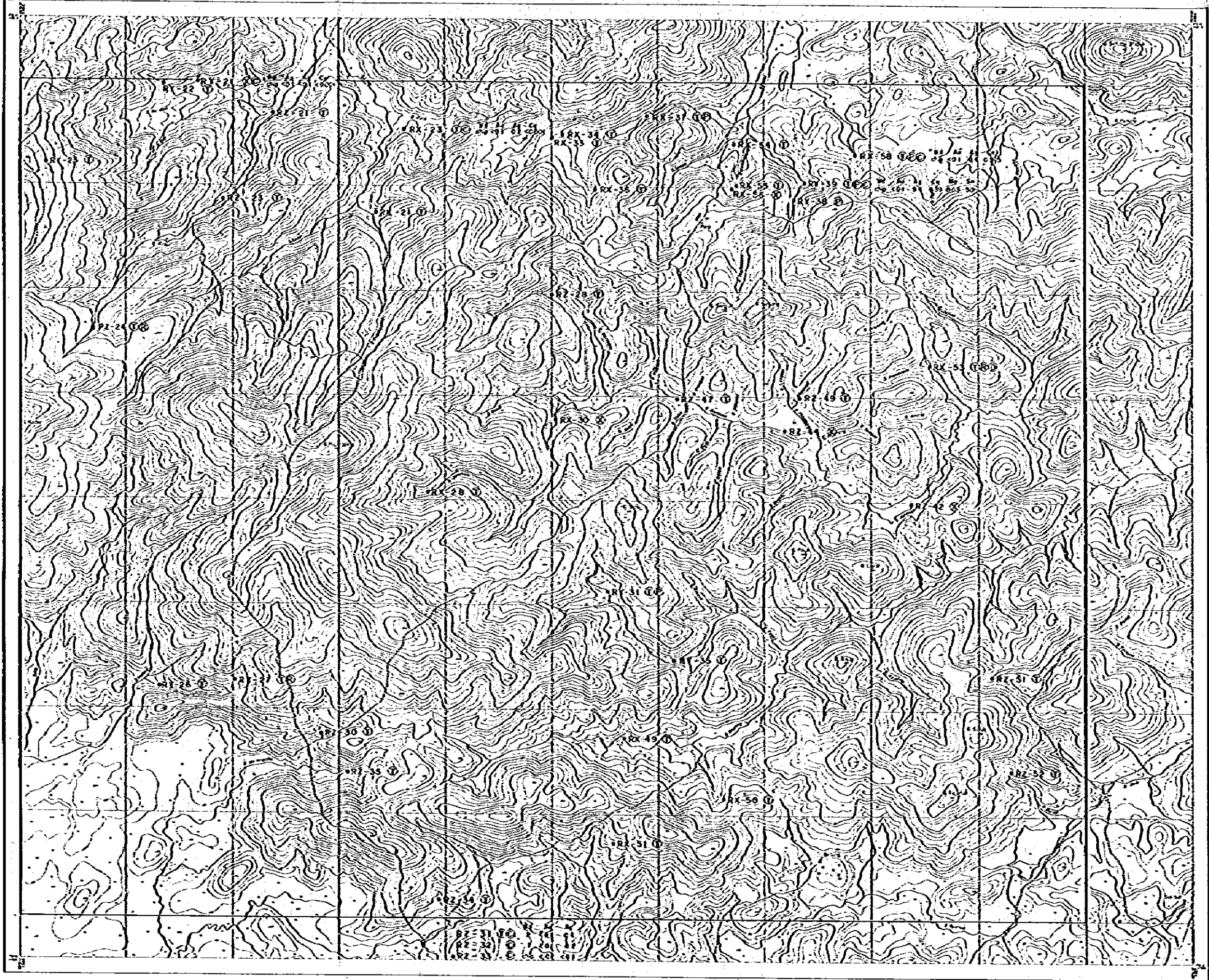


January - 1962

LEGEND

- (T-0) Location of Soil Sampling
- $\frac{3}{50}$  Assay Result of  $\frac{Mg}{Cu}$

PANJI

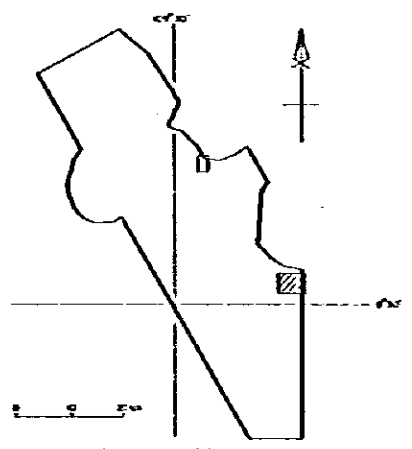
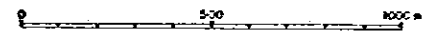


PL 3-10

METAL MINING AGENCY OF JAPAN DIRECTORATE OF MINERAL RESOURCES  
 JAPAN INTERNATIONAL COOPERATION AGENCY — DIRECTORATE GENERAL OF MINES AND ENERGY  
 REPUBLIC OF INDONESIA

METALLIC MINERAL EXPLORATION SURVEY  
 IN  
 WEST KALIMANTAN INDONESIA  
 LOCATION MAP OF  
 ROCKS AND ORE SAMPLES TESTED  
 (PANJI AREA)

Scale 1:10,000



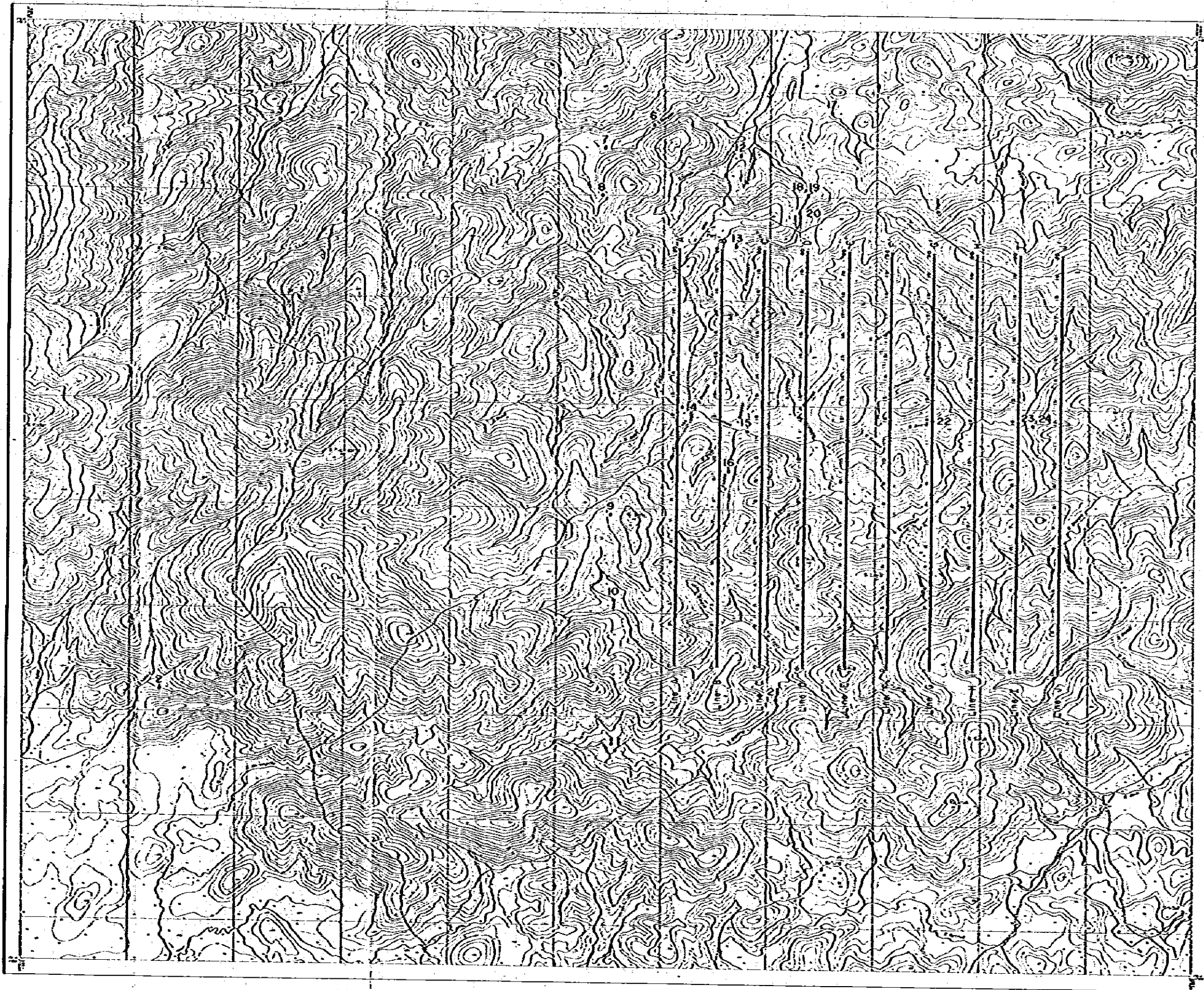
January - 1982

LEGEND

- (RZ-21) Location of rock or ore samples tested
- ① Thin section
- ② Polished specimen
- ③ Chemical analysis for rock
- ④ Chemical analysis for ore mineral
- ⑤ X-ray analysis
- ⑥ Röntgen photo diffraction method

Result of chemical analysis  
 Wt% Al<sub>2</sub>O<sub>3</sub> Fe<sub>2</sub>O<sub>3</sub> CaO ZnO MgO SiO<sub>2</sub>

PANJI

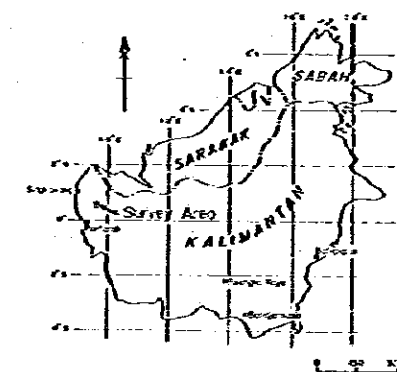
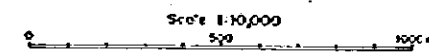


PL 4-1

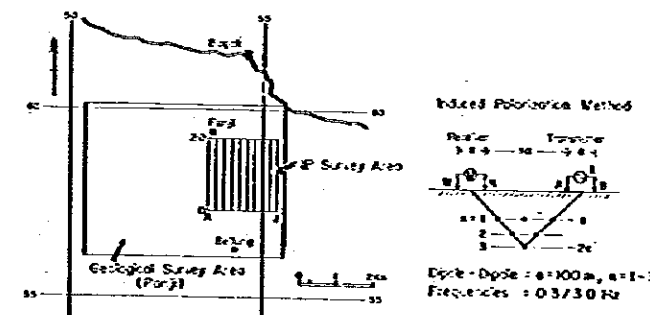
METAL MAPPING AGENCY OF JAPAN      DIRECTORATE OF MINERAL RESOURCES  
 JAPAN INTERNATIONAL COOPERATION AGENCY      DIRECTORATE GENERAL OF MINES AND ENERGY  
 MINISTRY OF MINES AND ENERGY

METALLIC MINERAL EXPLORATION SURVEY  
 IN  
 WEST KALIMANTAN INDONESIA  
 (GEOPHYSICAL SURVEY)

IP LINES AND LOCATIONS  
 OF ROCK SAMPLES



January - 1982

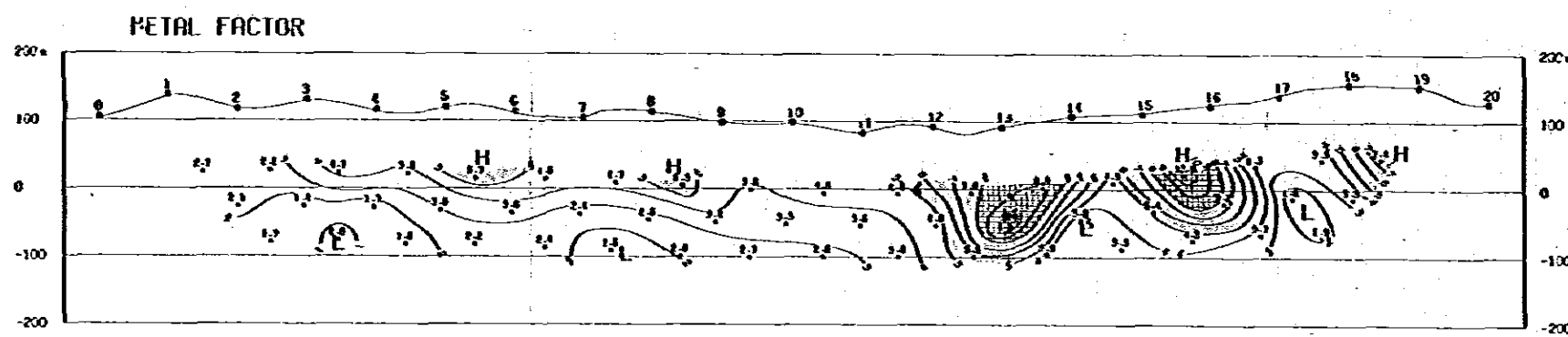
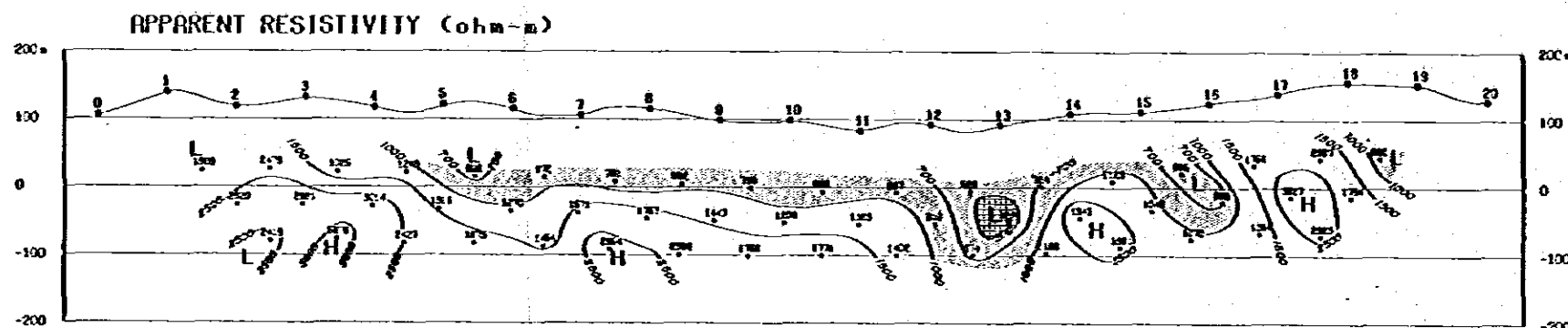
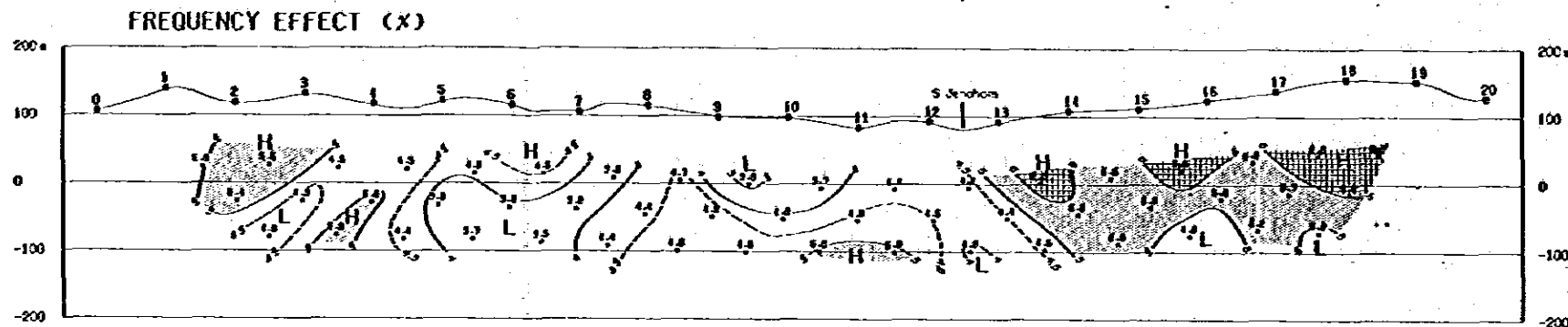


LEGEND

- IP line and stations
- location and no. of rock sample

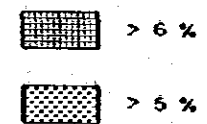


# LINE A

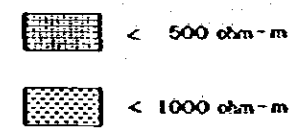


## LEGEND

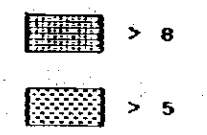
**FE**



**AR**



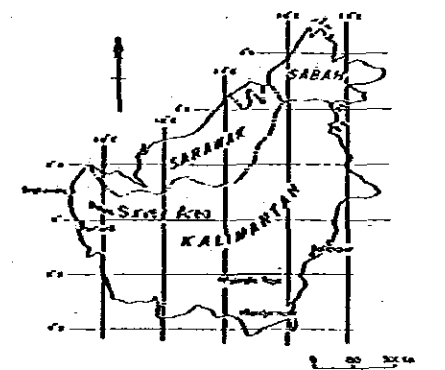
**MF**



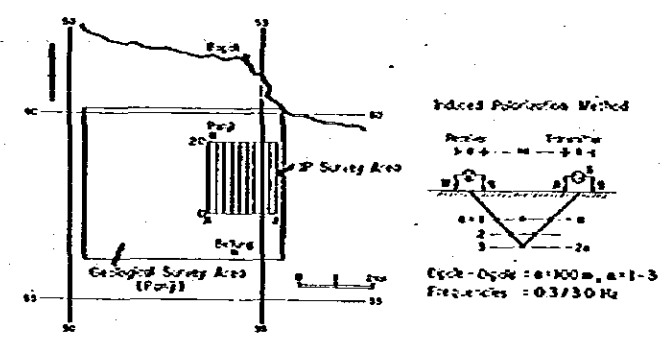
METAL MINING AGENCY OF JAPAN      DIRECTORATE OF MINERAL RESOURCES  
 JAPAN INTERNATIONAL COOPERATION AGENCY      DIRECTORATE GENERAL OF M.I.E.S. MINISTRY OF MINES AND ENERGY

**METALLIC MINERAL EXPLORATION SURVEY  
 IN  
 WEST KALIMANTAN INDONESIA  
 (GEOPHYSICAL SURVEY)  
 IP PSEUDO-SECTIONS  
 LINE A**

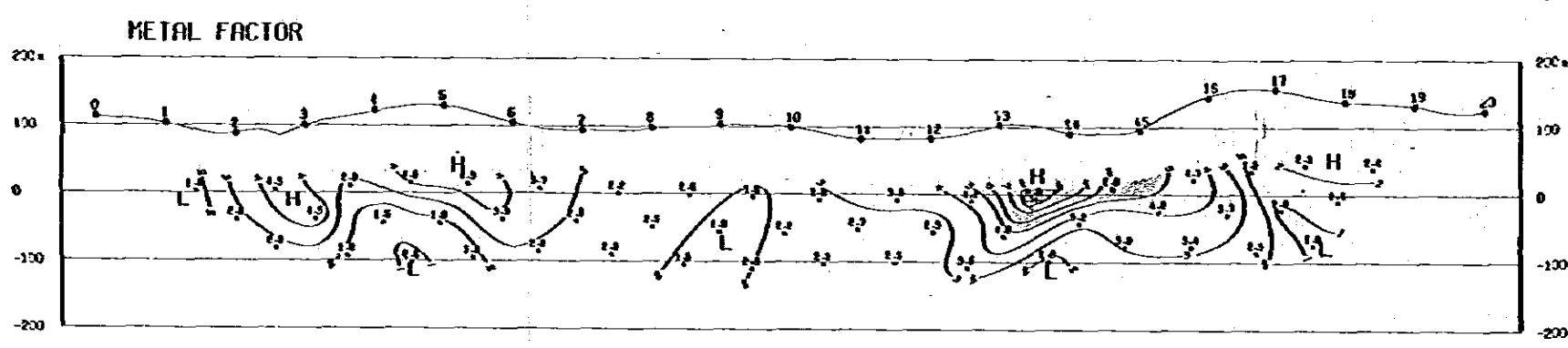
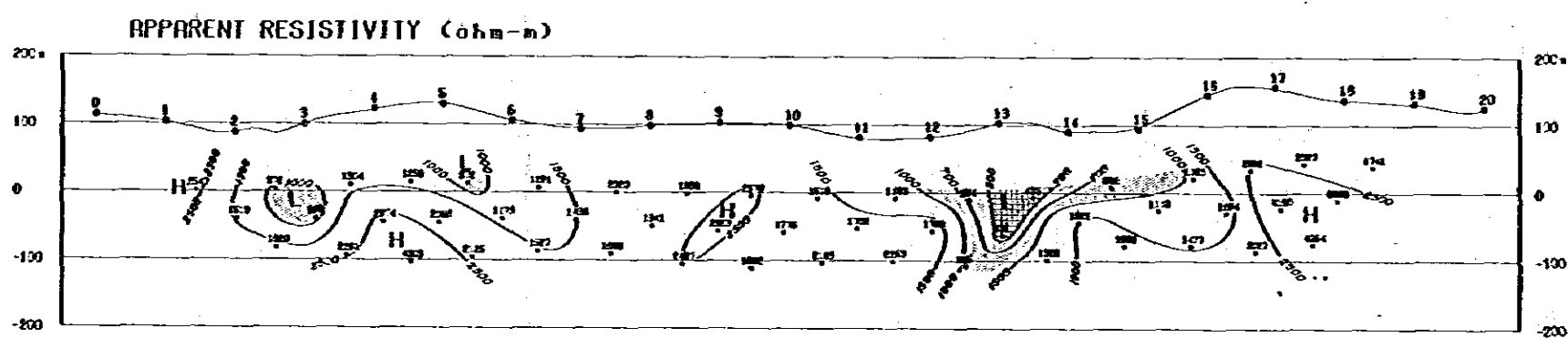
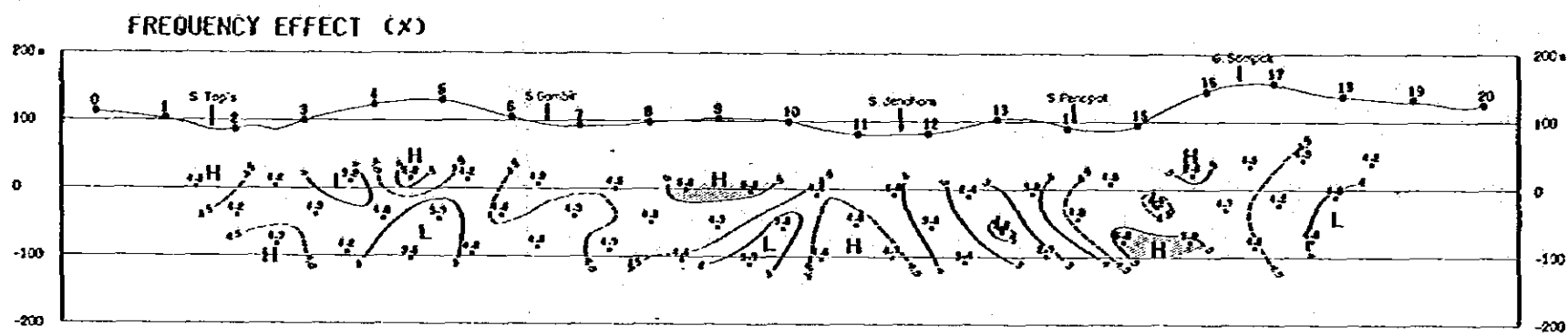
Scale 1:5,000  
 0 100 200 300 400



January 1962



## LINE B



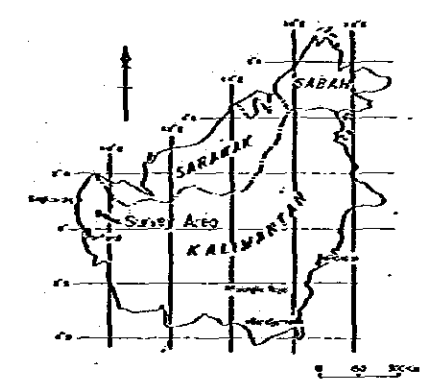
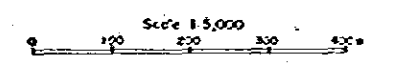
### LEGEND

- FE**
- > 6 %
- > 5 %
  
- AR**
- < 500 ohm-m
- < 1000 ohm-m
  
- MF**
- > 6
- > 5

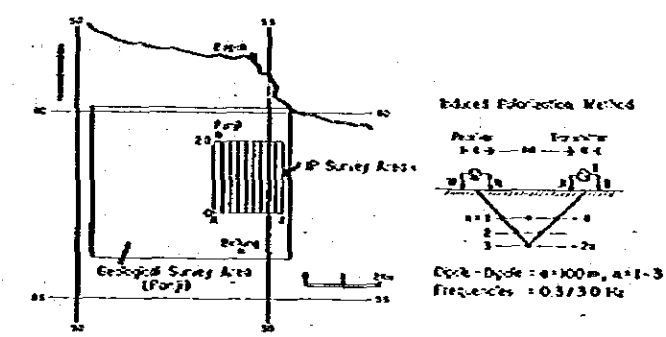
PL 4-3

METAL MINING AGENCY OF JAPAN      DIRECTORATE OF MINERAL RESOURCES  
 JAPAN INTERNATIONAL                  DIRECTORATE GENERAL OF M.A.E.S.  
 COOPERATION AGENCY                  MINISTRY OF MINES AND ENERGY

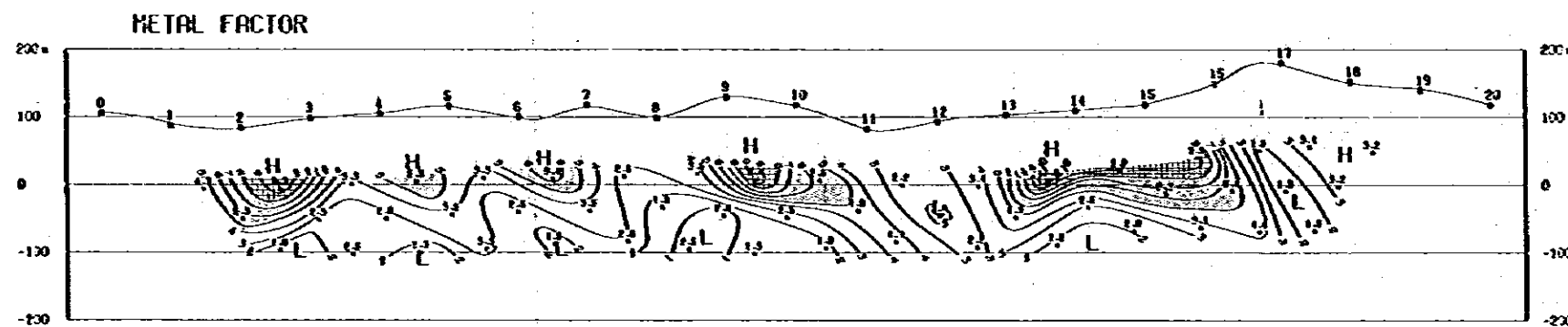
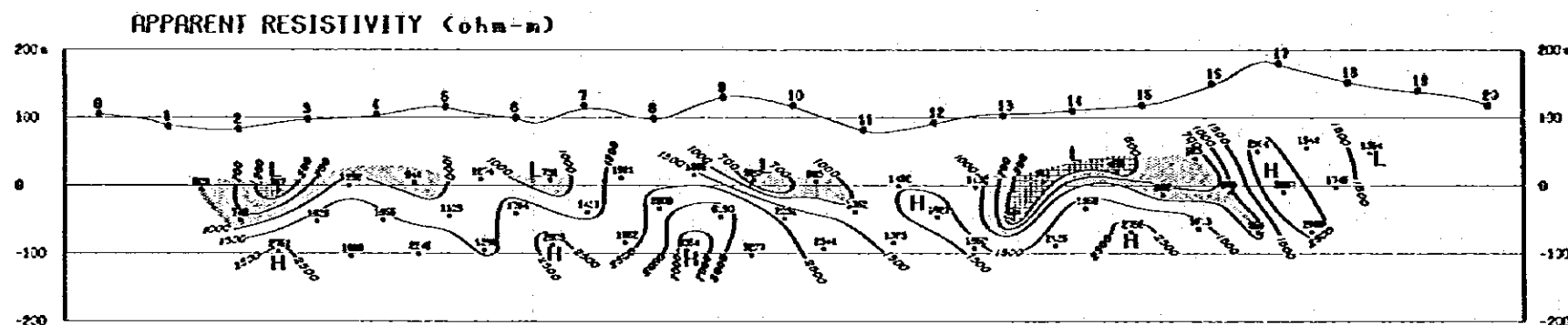
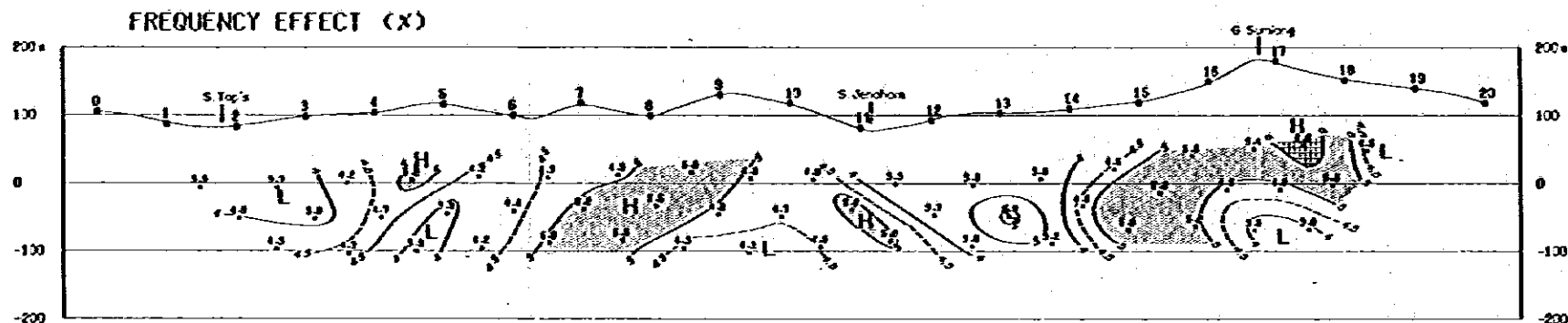
**METALLIC MINERAL EXPLORATION SURVEY  
 IN  
 WEST KALIMANTAN INDONESIA  
 (GEOPHYSICAL SURVEY)  
 IP PSEUDO-SECTIONS  
 LINE B**



January - 1982



# LINE C



## LEGEND

FE

> 6 %

> 5 %

AR

< 500 ohm-m

< 1000 ohm-m

MF

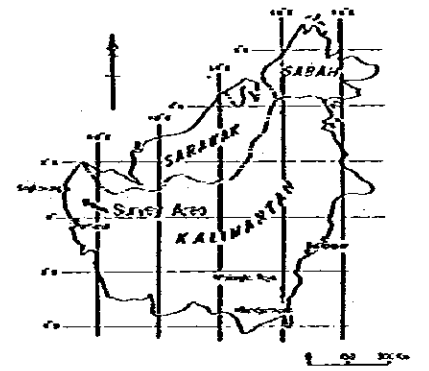
> 8

> 5

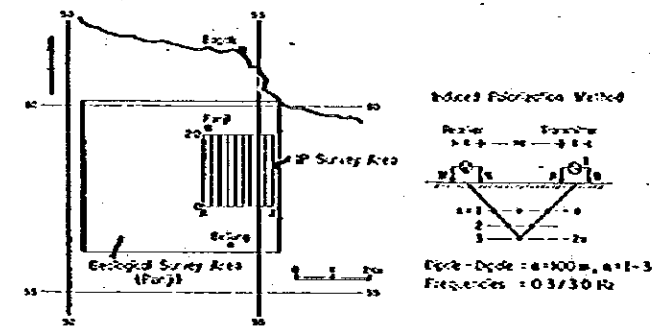
PL 4-4  
 METAL MINING AGENCY OF JAPAN DIRECTORATE OF MINERAL RESOURCES  
 JAPAN INTERNATIONAL COOPERATION AGENCY DIRECTORATE GENERAL OF M.A.E.S. MINISTRY OF MINES AND ENERGY

## METALLIC MINERAL EXPLORATION SURVEY IN WEST KALIMANTAN INDONESIA (GEOPHYSICAL SURVEY) IP PSEUDO-SECTIONS LINE C

Scale 1:5,000

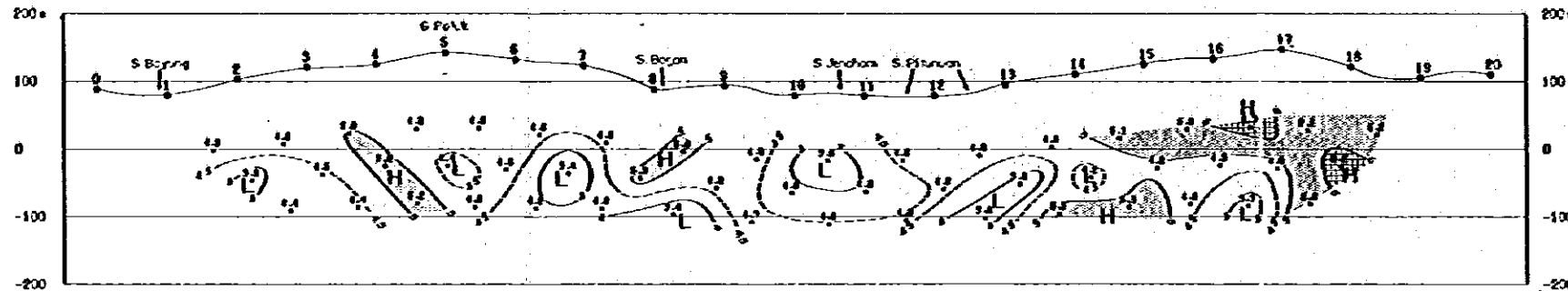


January 1962

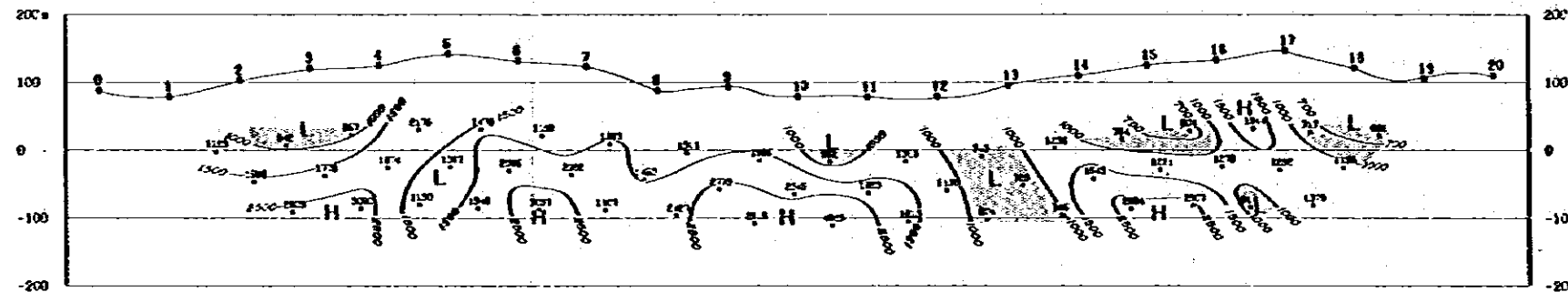


# LINE D

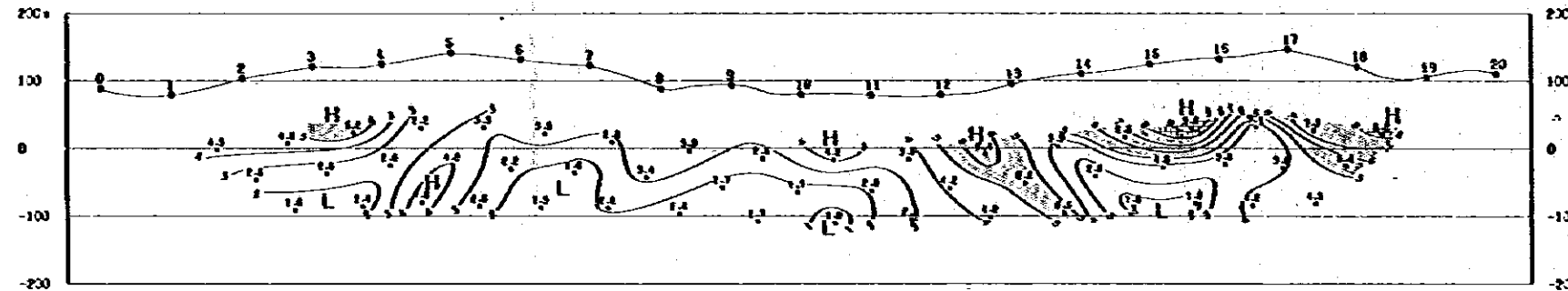
## FREQUENCY EFFECT (X)



## APPARENT RESISTIVITY (ohm-m)

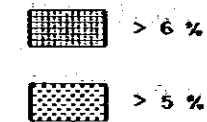


## METAL FACTOR

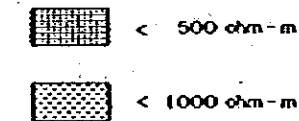


## LEGEND

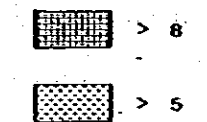
### FE



### AR



### MF



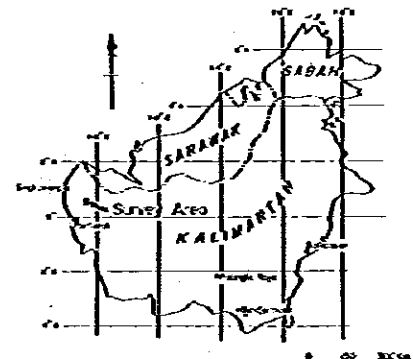
METAL MINING AGENCY OF JAPAN  
 JAPAN INTERNATIONAL COOPERATION AGENCY

DIRECTORATE OF MINERAL RESOURCES  
 DIRECTORATE GENERAL OF M.A.E.S.  
 MINISTRY OF MINES AND ENERGY

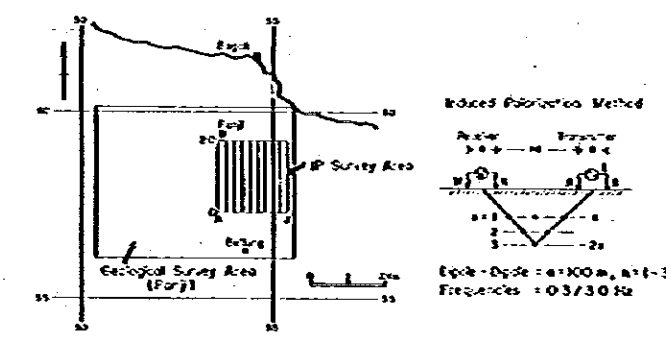
PL.1-5

## METALLIC MINERAL EXPLORATION SURVEY IN WEST KALIMANTAN INDONESIA (GEOPHYSICAL SURVEY) IP PSEUDO-SECTIONS LINE D

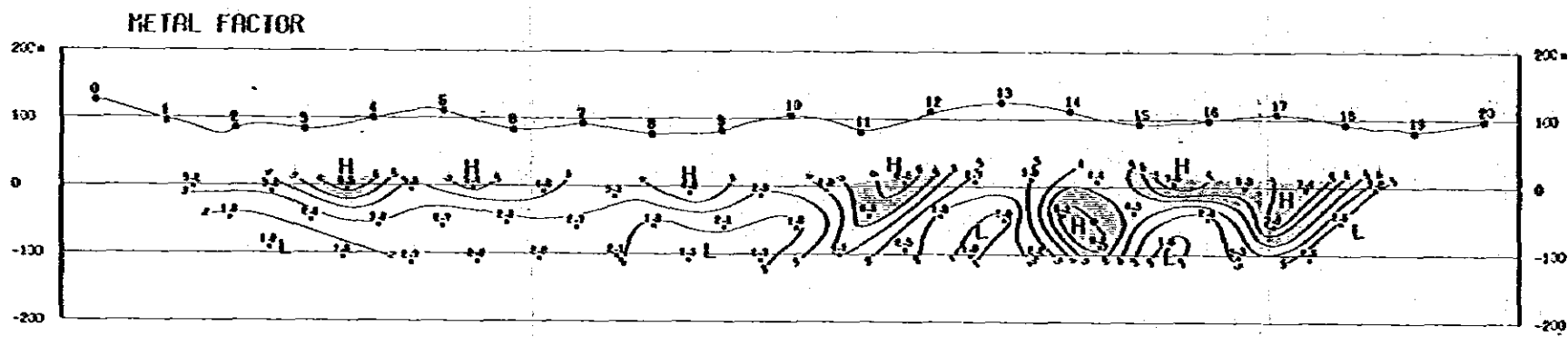
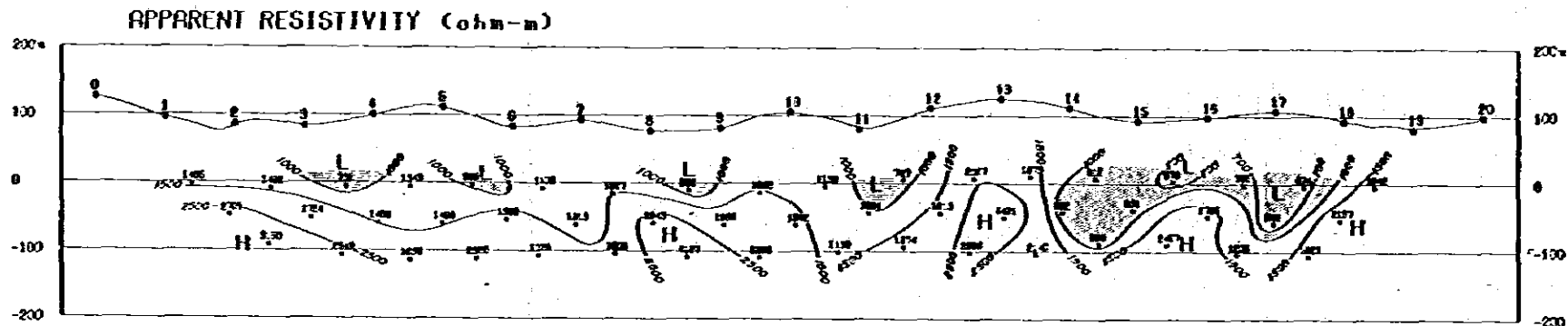
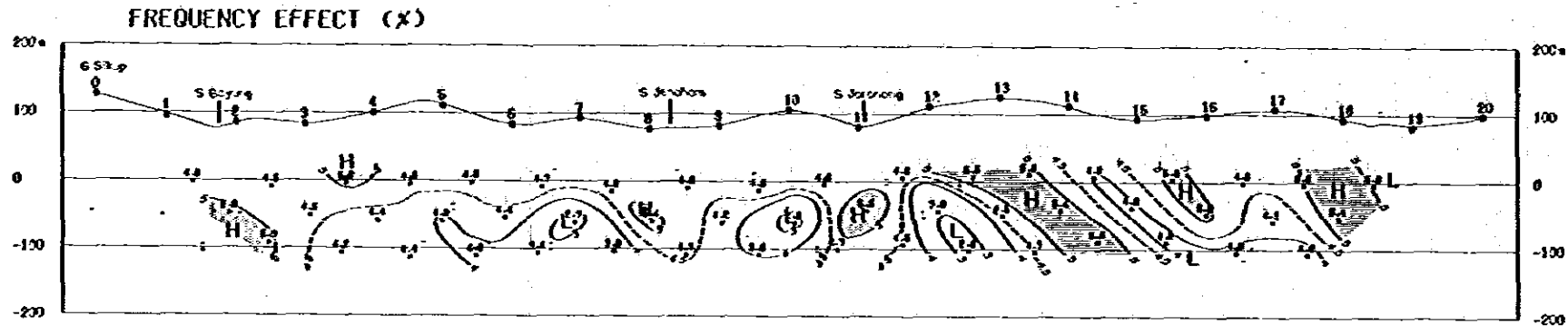
Scale 1:5,000



January 1982



# LINE E



## LEGEND

- FE**
- > 6 %
  - > 5 %
- AR**
- < 500 ohm-m
  - < 1000 ohm-m
- MF**
- > 8
  - > 5

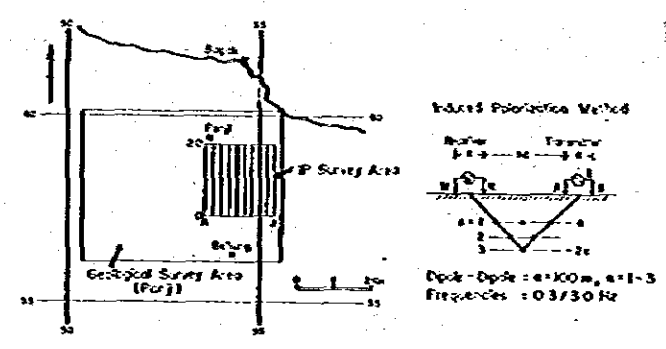
PL 4-6

METAL MINING AGENCY OF JAPAN     DIRECTORATE OF MINERAL RESOURCES  
 JAPAN INTERNATIONAL COOPERATION AGENCY     DIRECTORATE GENERAL OF MINES AND ENERGY

**METALLIC MINERAL EXPLORATION SURVEY  
 IN  
 WEST KALIMANTAN INDONESIA  
 (GEOPHYSICAL SURVEY)  
 IP PSEUDO-SECTIONS  
 LINE E**

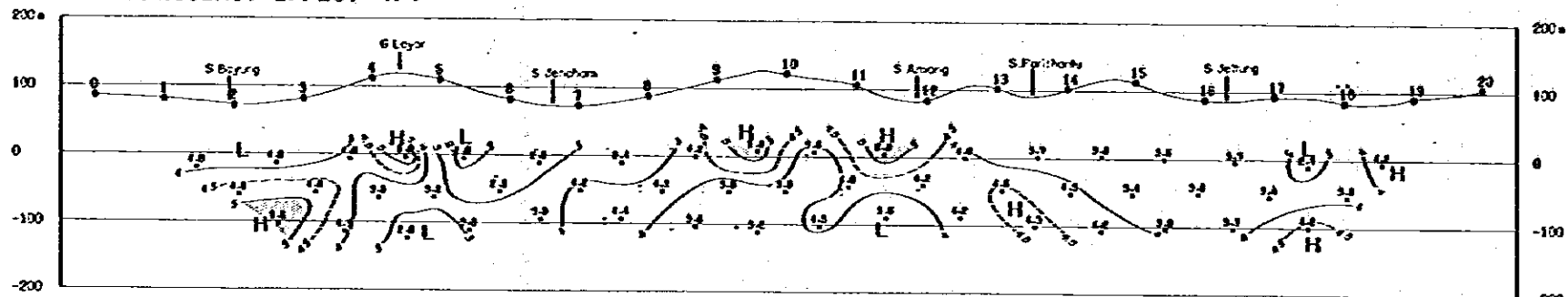
Scale 1:5,000

January 1962

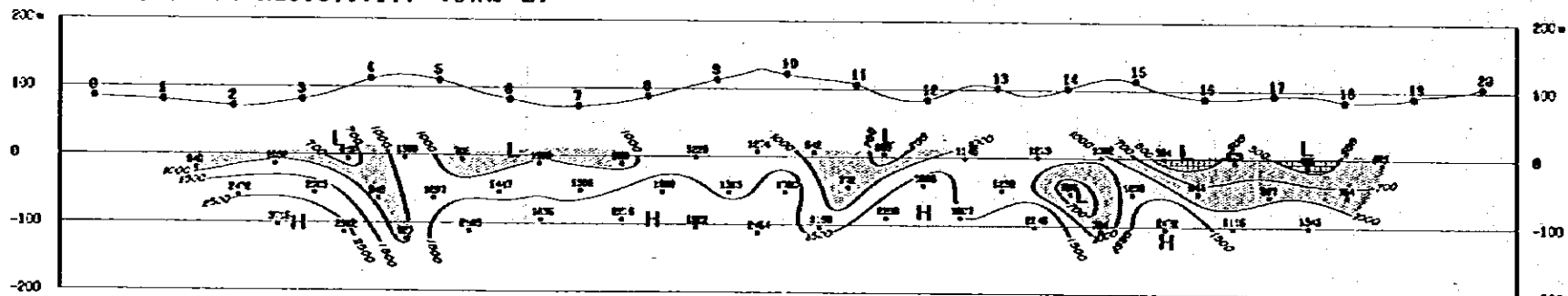


# LINE F

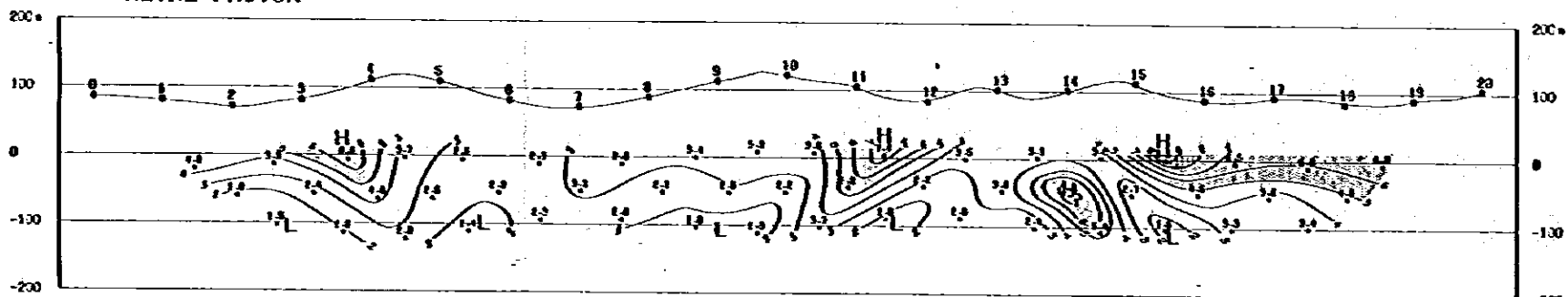
## FREQUENCY EFFECT (x)



## APPARENT RESISTIVITY (ohm-m)



## METAL FACTOR



## LEGEND

### FE

- > 6 %
- > 5 %

### AR

- < 500 ohm-m
- < 1000 ohm-m

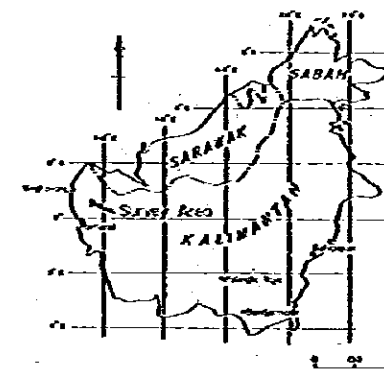
### MF

- > 8
- > 5

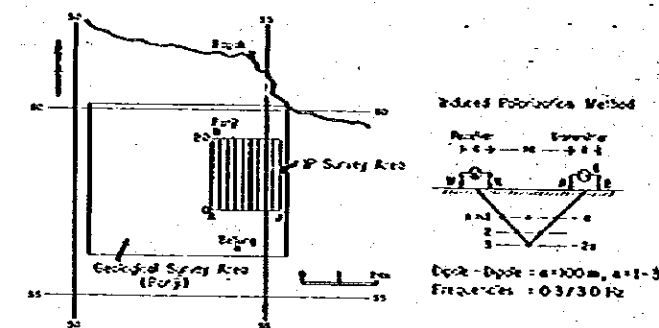
METAL MINING AGENCY OF JAPAN      DIRECTORATE OF MINERAL RESOURCES  
 JAPAN INTERNATIONAL COOPERATION AGENCY      DIRECTORATE GENERAL OF M.I.E.S.  
 MINISTRY OF MINES AND ENERGY

METALLIC MINERAL EXPLORATION SURVEY  
 IN  
 WEST KALIMANTAN INDONESIA  
 (GEOPHYSICAL SURVEY)  
 IP PSEUDO-SECTIONS  
 LINE F

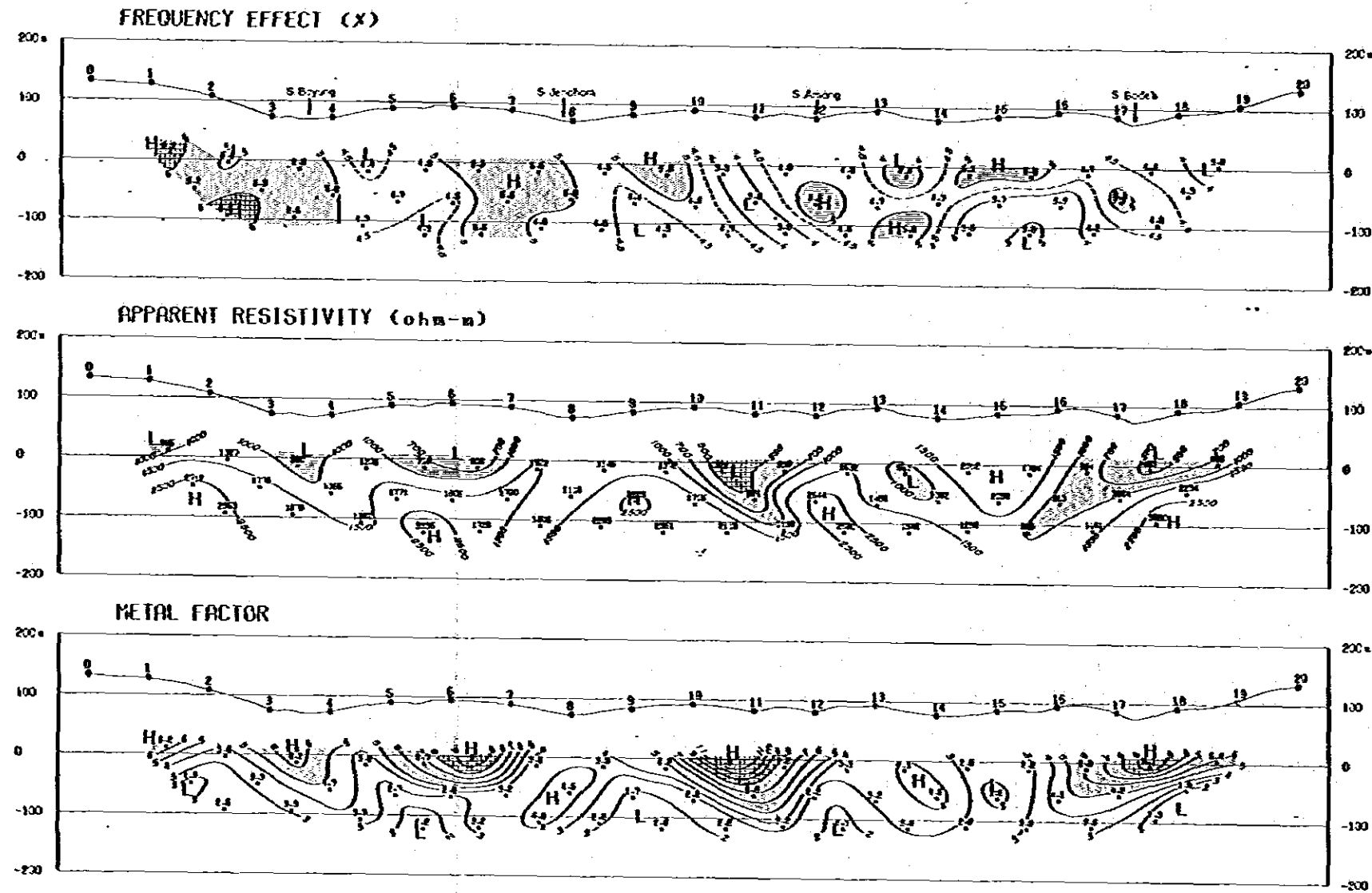
Scale 1:5,000



January 1962

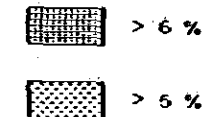


# LINE G

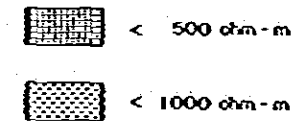


## LEGEND

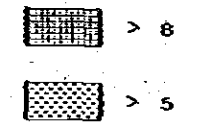
FE



AR



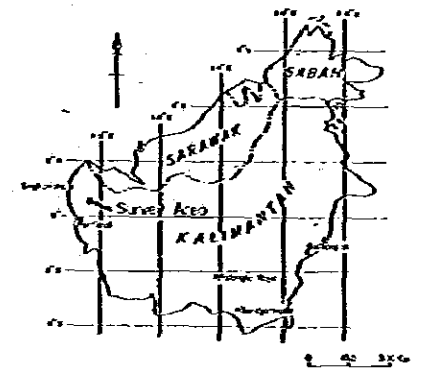
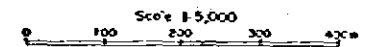
MF



METAL MINING AGENCY OF JAPAN  
JAPAN INTERNATIONAL  
COOPERATION AGENCY

DIRECTORATE OF MINERAL  
RESOURCES  
DIRECTORATE GENERAL  
OF MINES  
MINISTRY OF MINES  
AND ENERGY

METALLIC MINERAL EXPLORATION SURVEY  
IN  
WEST KALIMANTAN INDONESIA  
(GEOPHYSICAL SURVEY)  
IP PSEUDO-SECTIONS  
LINE G



January 1982

