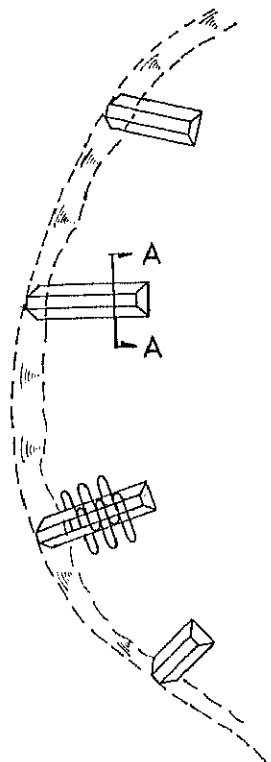
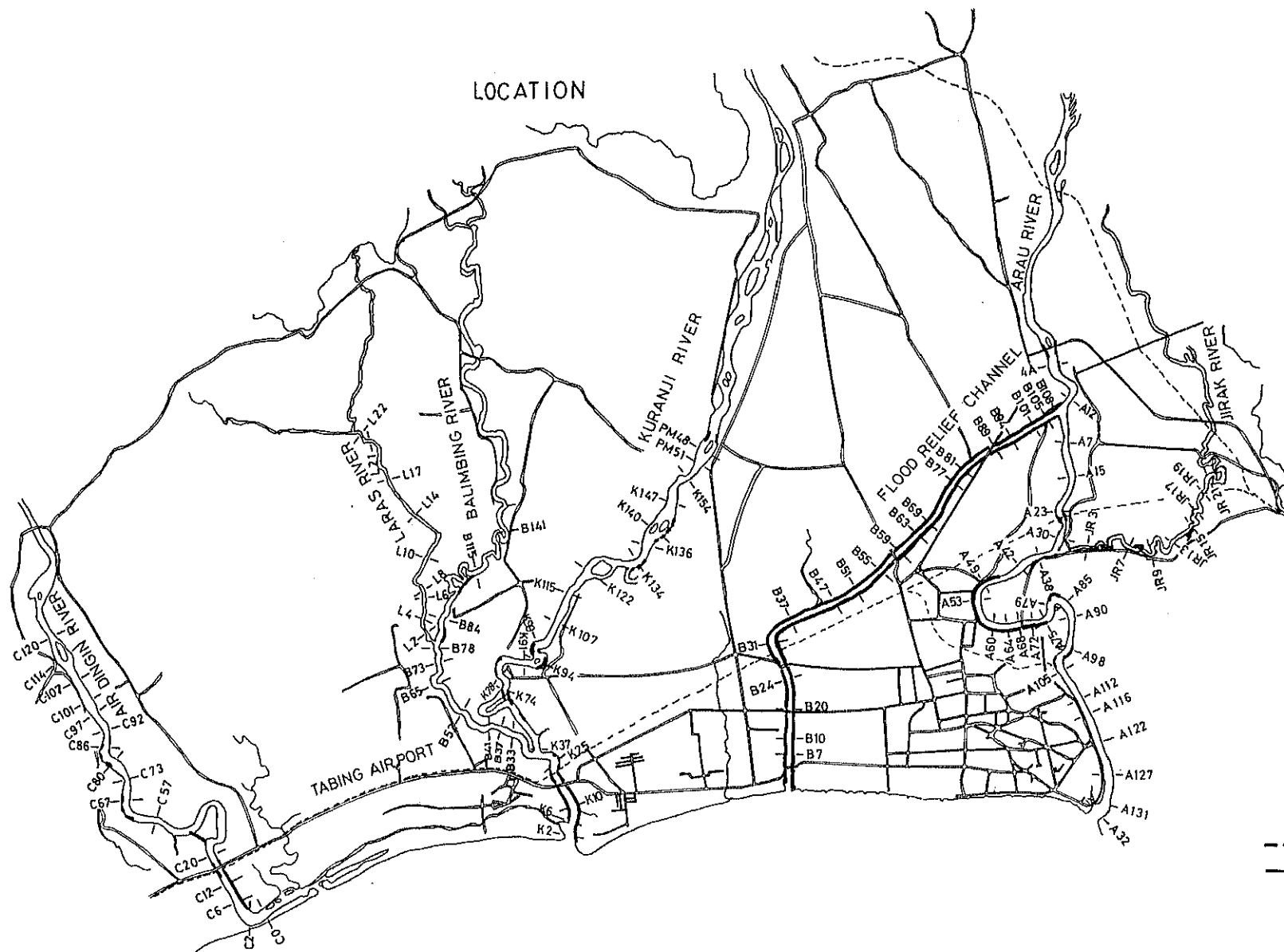


Groyne

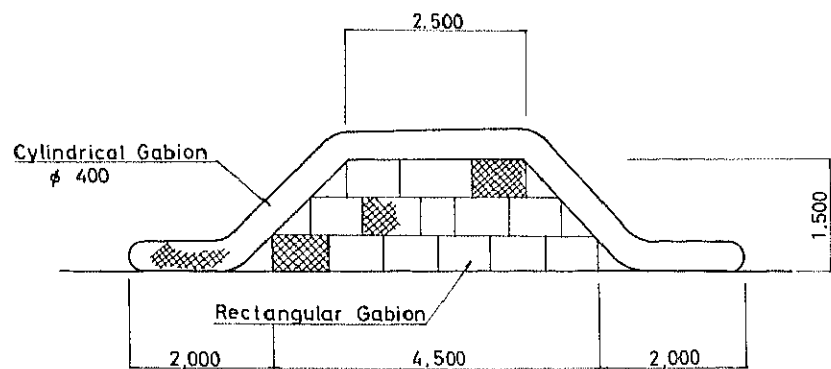


LOCATION

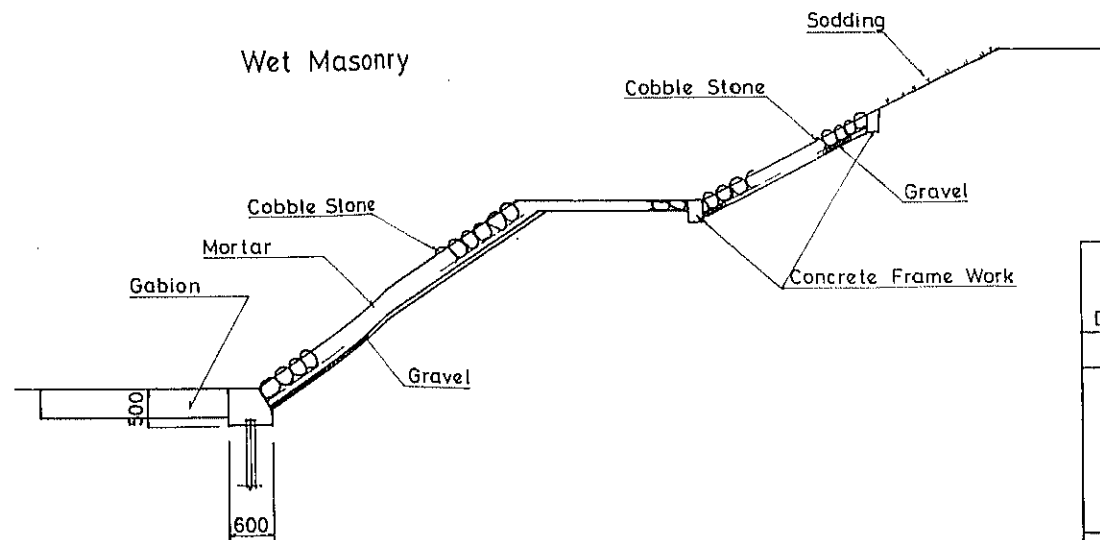


**LEGEND**  
 - - - - - Groyne  
 ———— Wet Masonry

A-A



Dry Masonry



REPUBLIC OF INDONESIA  
 MINISTRY OF PUBLIC WORKS  
 DIRECTORATE GENERAL OF WATER RESOURCES DEVELOPMENT

PADANG AREA RIVER IMPROVEMENT PROJECT

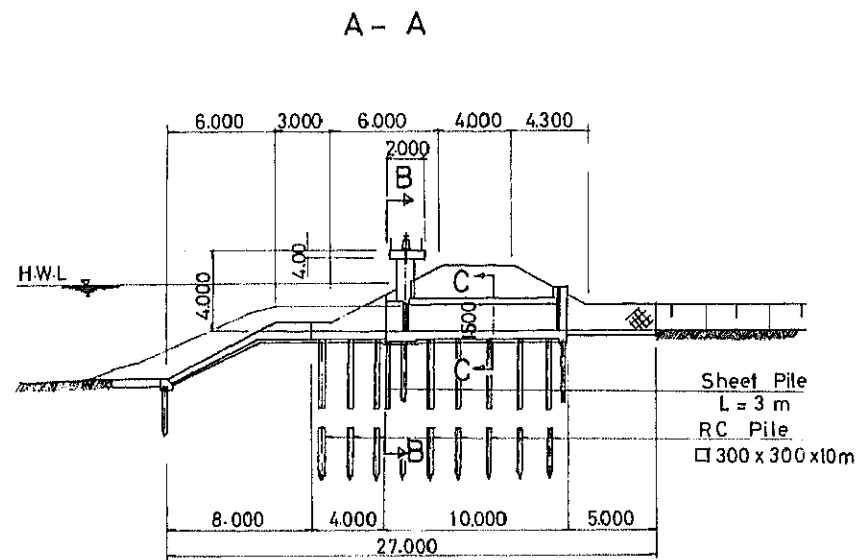
TITLE OF DRAWING

**BANK PROTECTION**

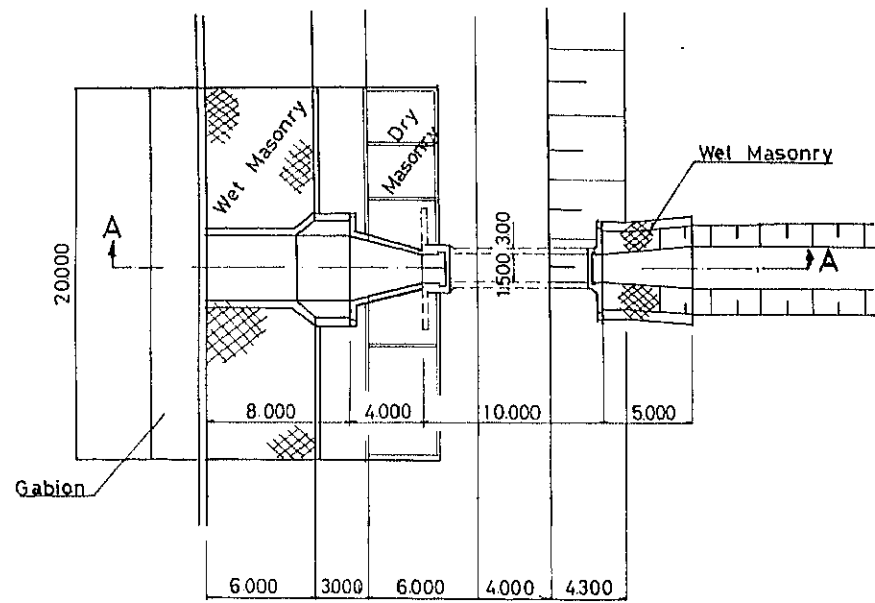
JAPAN INTERNATIONAL COOPERATION AGENCY  
 TOKYO, JAPAN

DW.G. NO  
**I-35**

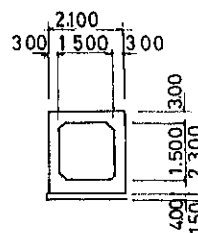
DRAINAGE CULVERT ( 1.5 m x 1.5 m )



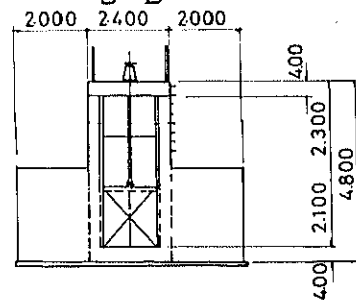
PLAN



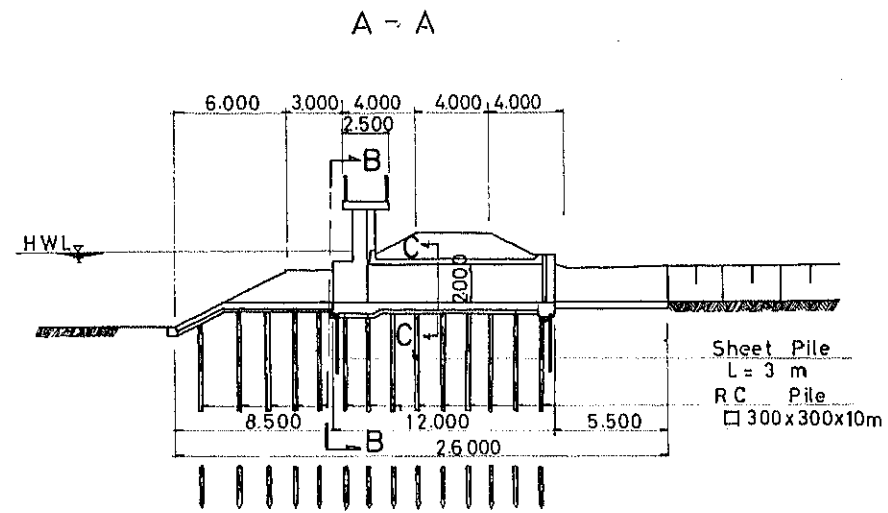
C-C



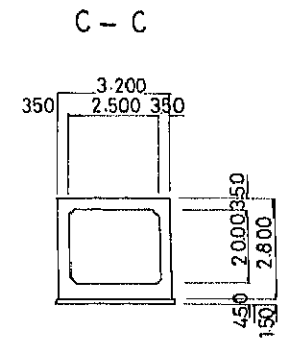
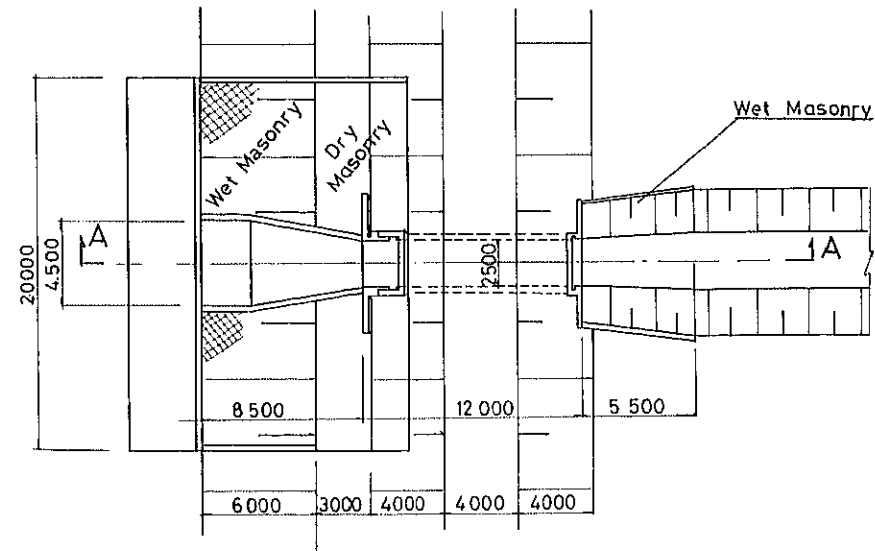
B-B



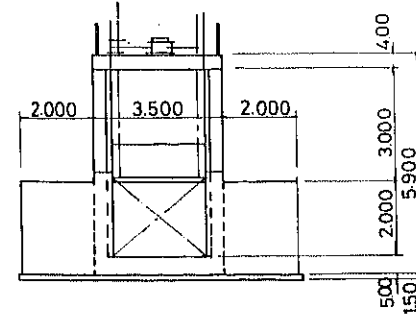
DRAINAGE CULVERT ( 2.0 m x 2.5 m )



PLAN



B-B



REPUBLIC OF INDONESIA  
 MINISTRY OF PUBLIC WORKS  
 DIRECTORATE GENERAL OF WATER RESOURCES DEVELOPMENT  
 PADANG AREA RIVER IMPROVEMENT PROJECT

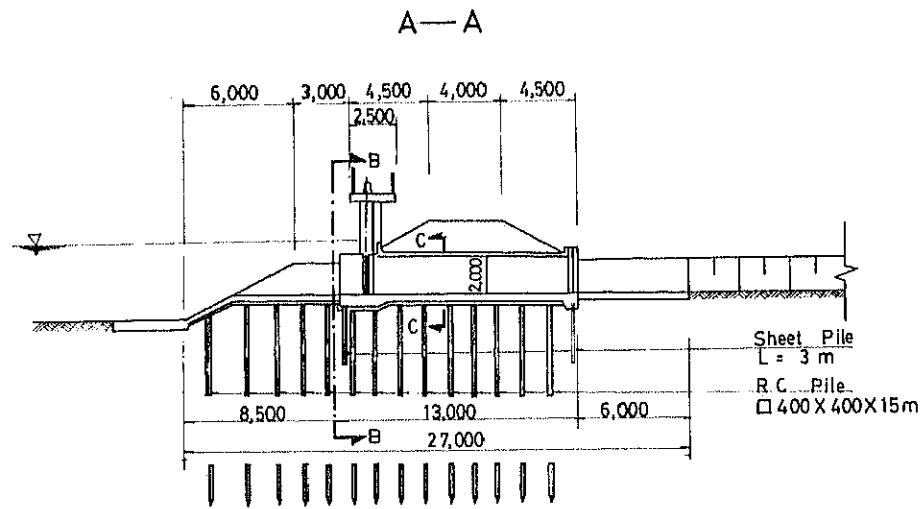
TITLE OF DRAWING

**DRAINAGE CULVERT**  
 1.5m x 1.5 m ; 20m x 2.5 m

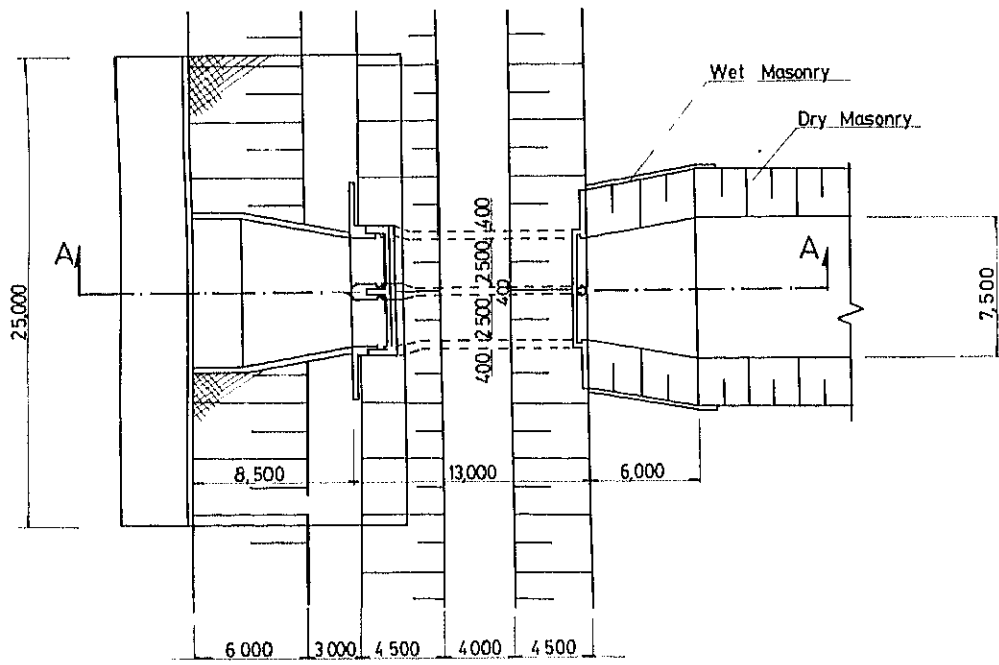
JAPAN INTERNATIONAL COOPERATION AGENCY  
 TOKYO JAPAN

D.W.G. NO  
**I-36**

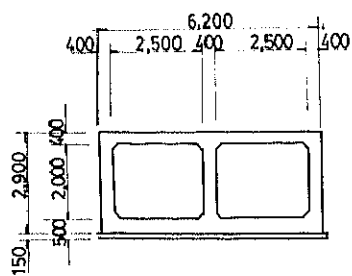
DRAINAGE CULVERT (2.0m x 2.5m x 2)



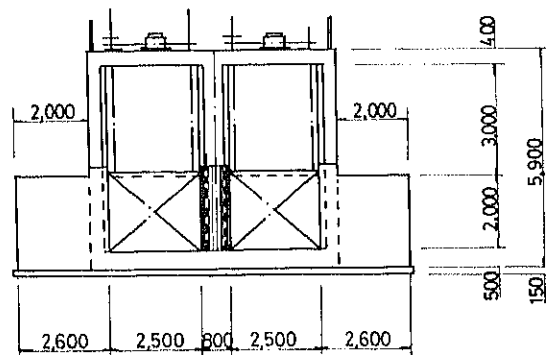
PLAN



C-C

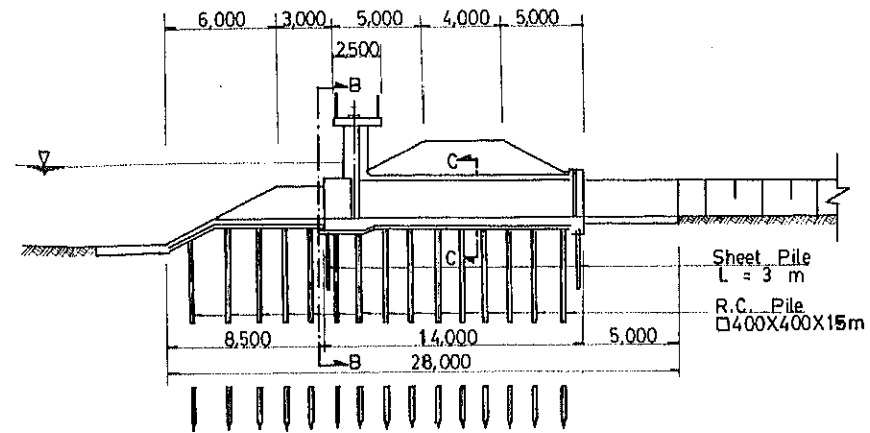


B-B

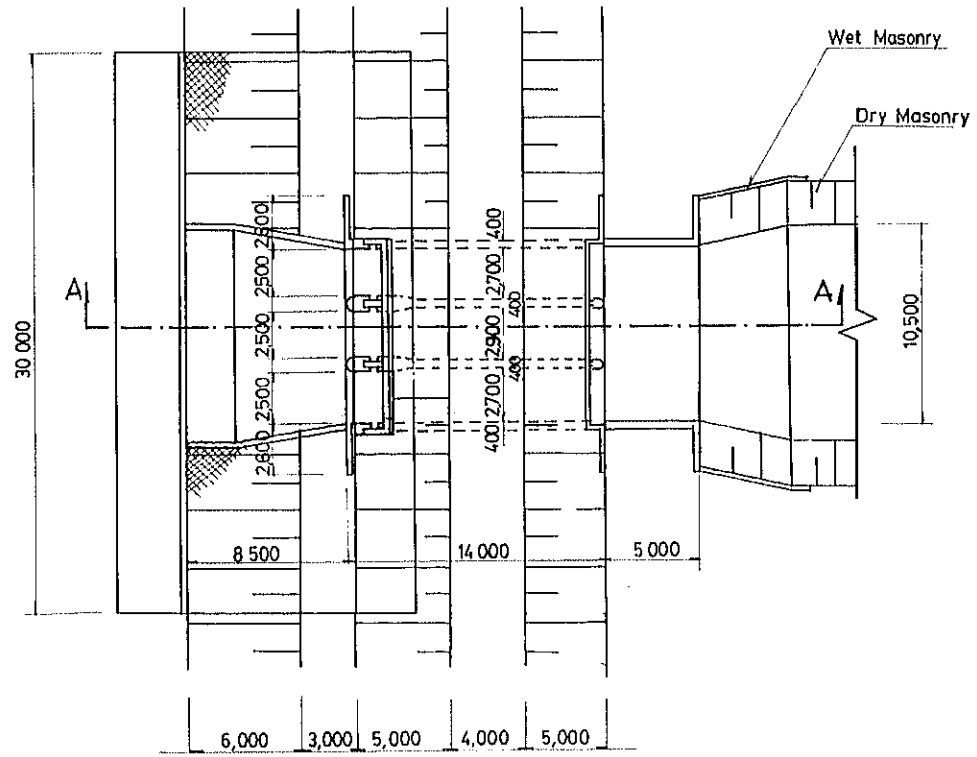


DRAINAGE CULVERT (2.0m x 2.5m x 3)

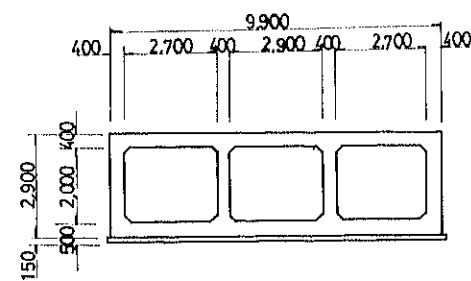
A-A



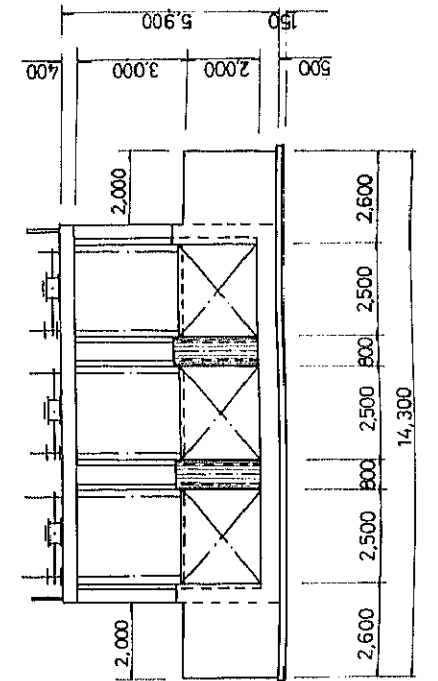
PLAN



C-C

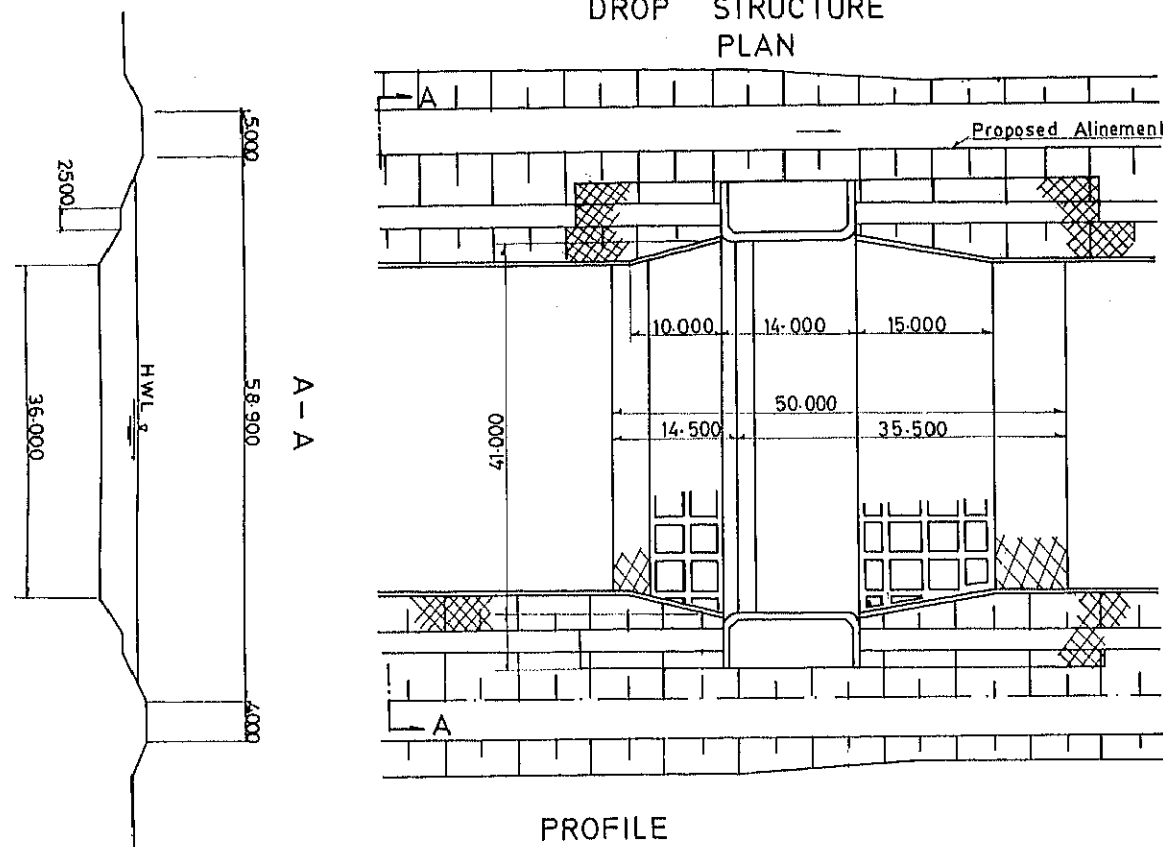


B-B

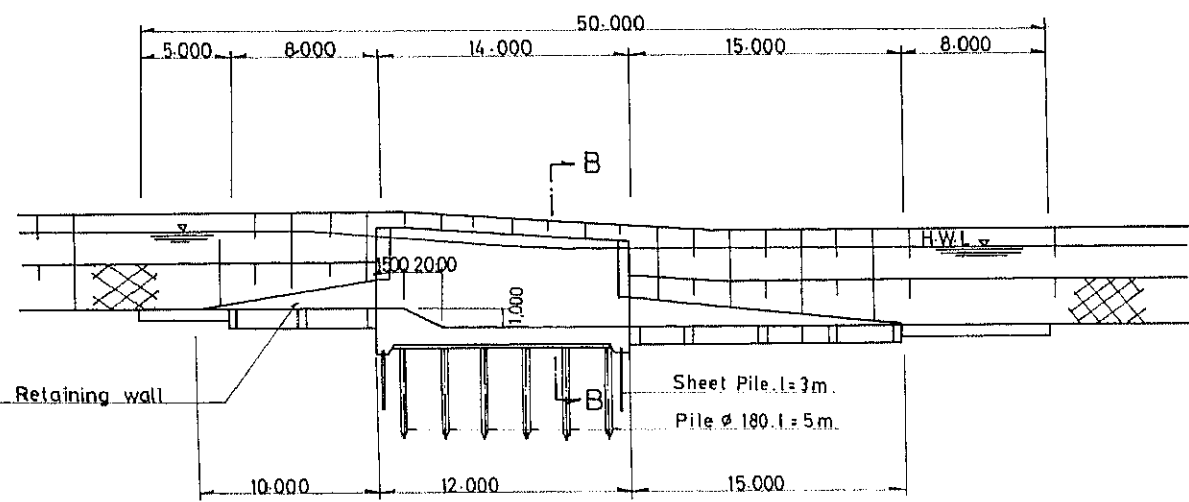


REPUBLIC OF INDONESIA MINISTRY OF PUBLIC WORKS DIRECTORATE GENERAL OF WATER RESOURCES DEVELOPMENT PADANG AREA RIVER IMPROVEMENT PROJECT	
TITLE OF DRAWING <b>DRAINAGE CULVERT</b> <b>2.0m X 2.5m X 2 ; 2.0m X 2.5m X 3</b>	
JAPAN INTERNATIONAL COOPERATION AGENCY TOKYO, JAPAN	DW.G. NO <b>1-37</b>

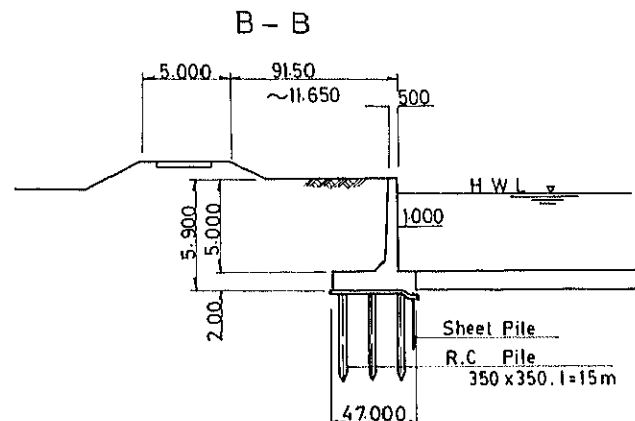
DROP STRUCTURE PLAN



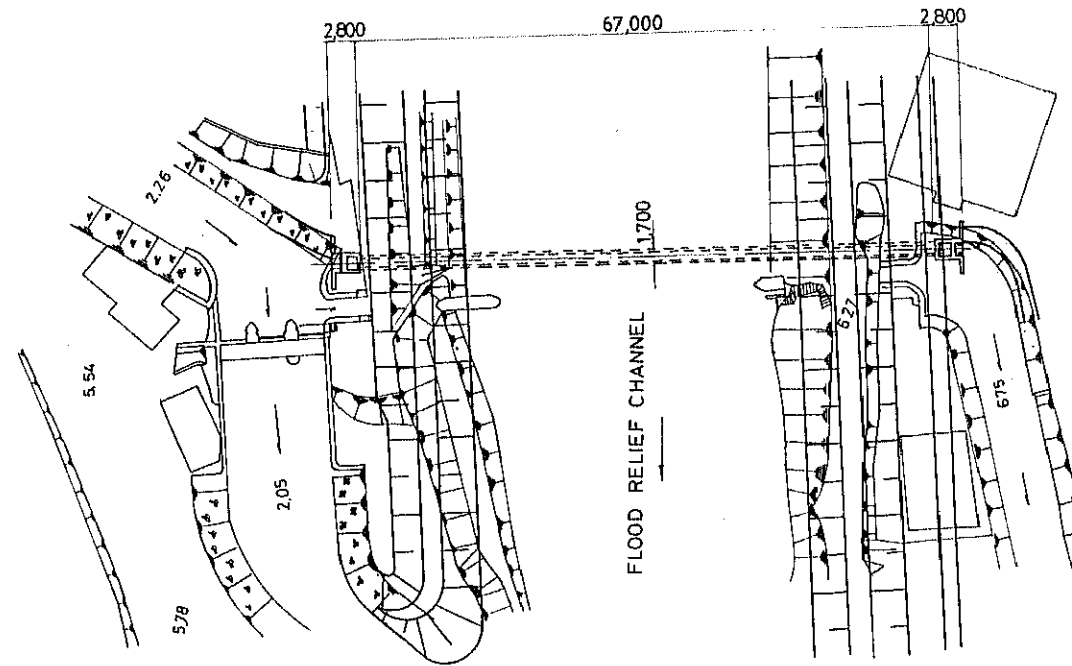
PROFILE



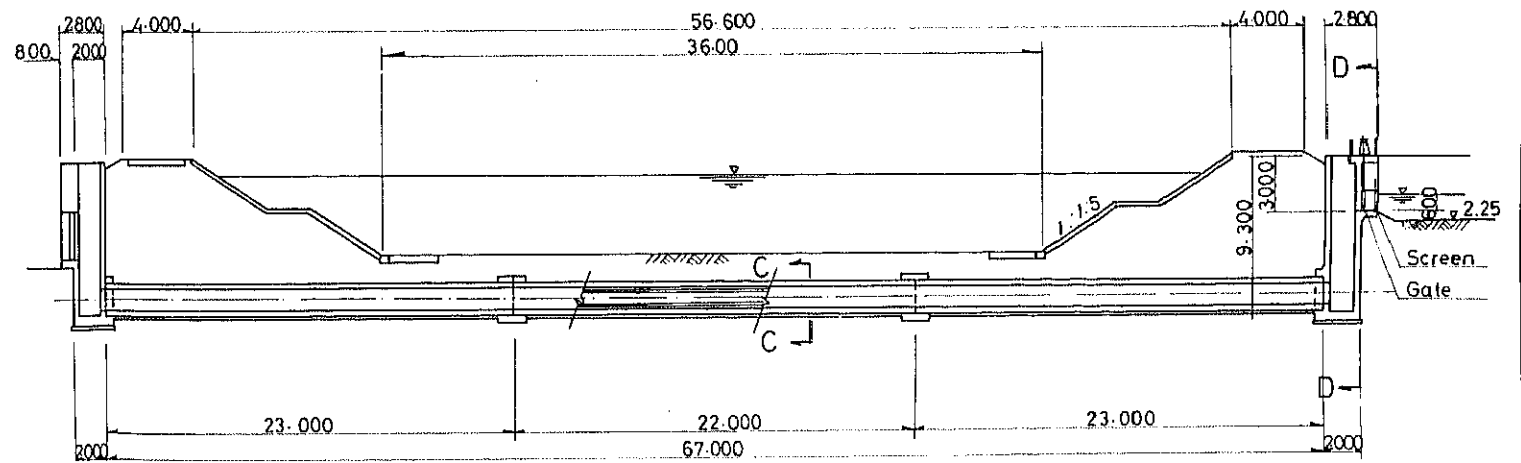
B - B



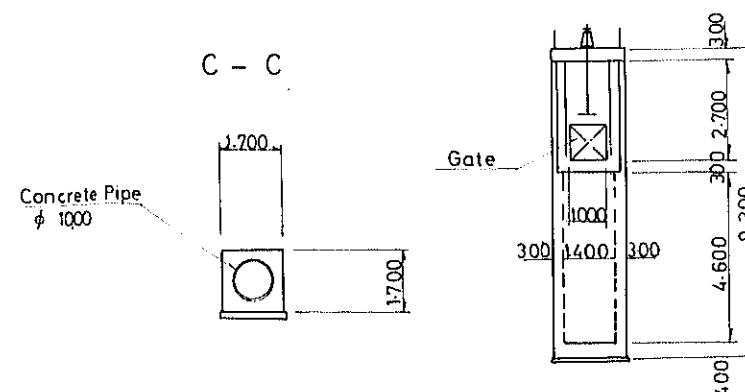
LOCATION



PROFILE



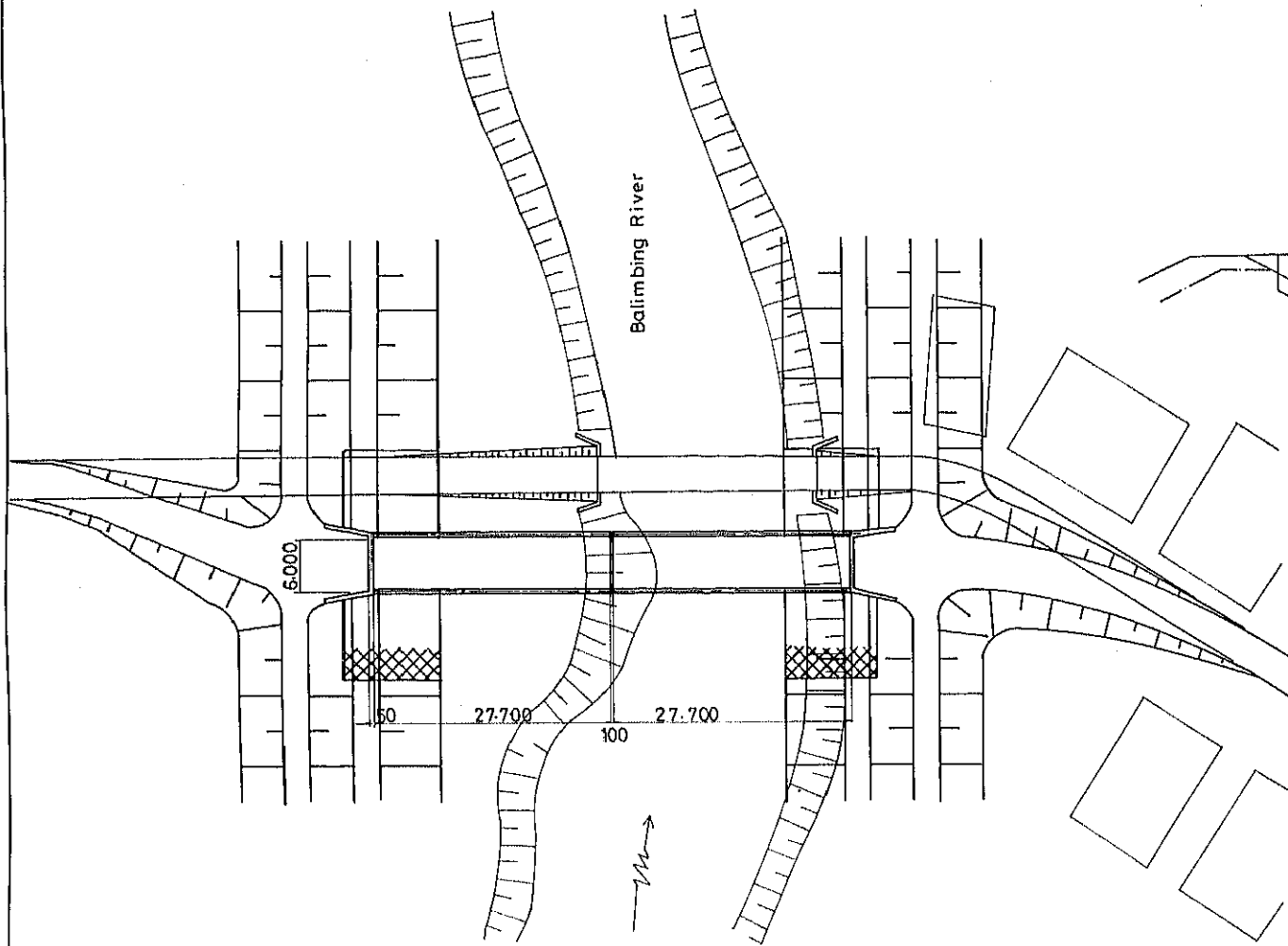
D - D



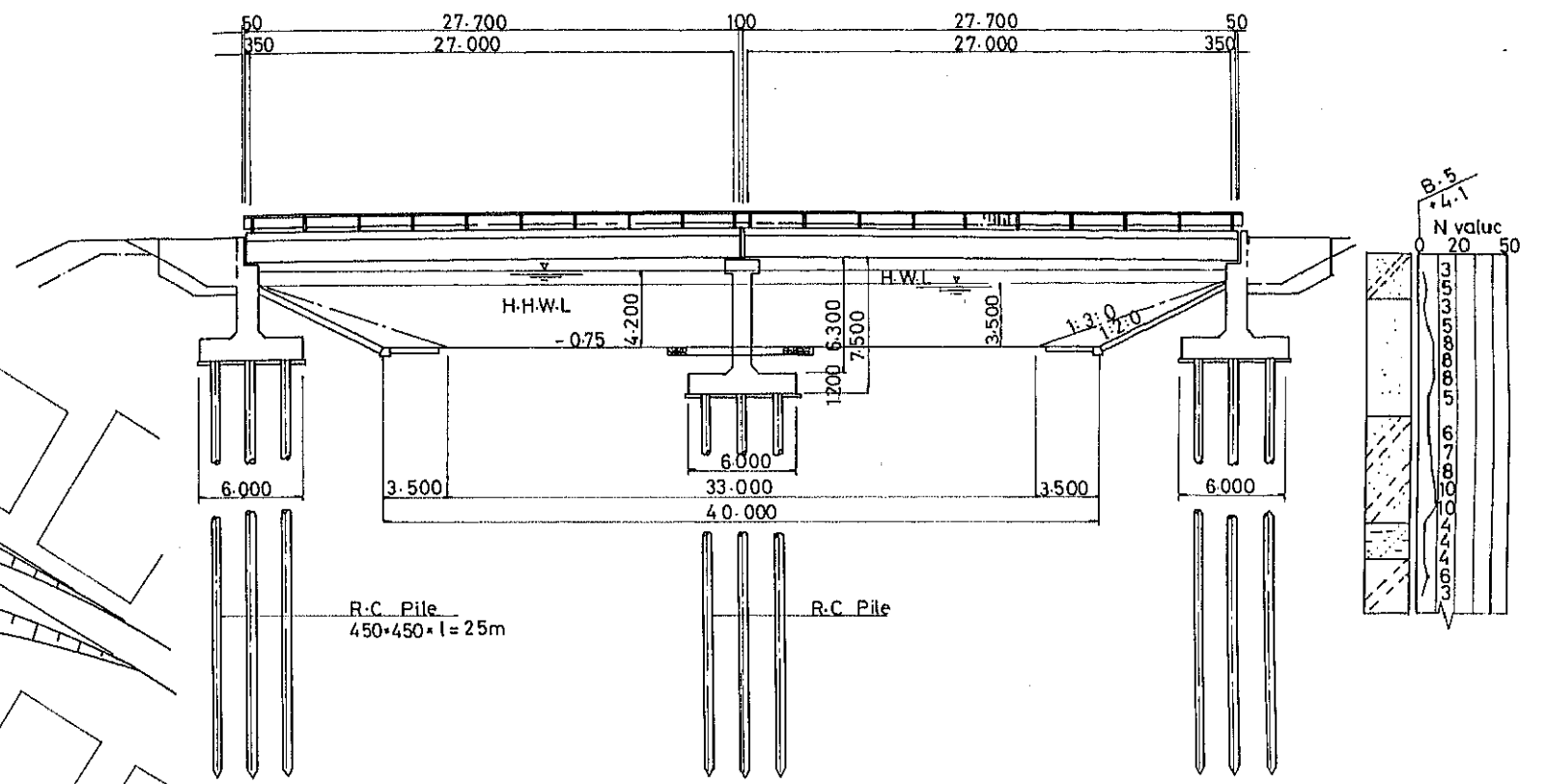
REPUBLIC OF INDONESIA MINISTRY OF PUBLIC WORKS DIRECTORATE GENERAL OF WATER RESOURCES DEVELOPMENT PADANG AREA RIVER IMPROVEMENT PROJECT	
TITLE OF DRAWING <b>DROP STRUCTURE AND SYPHON</b>	
JAPAN INTERNATIONAL COOPERATION AGENCY TOKYO JAPAN	DW.G. NO <b>1-38</b>



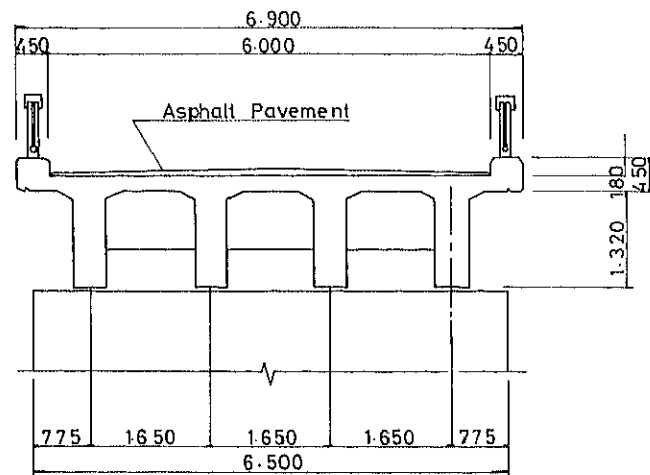
LOCATION



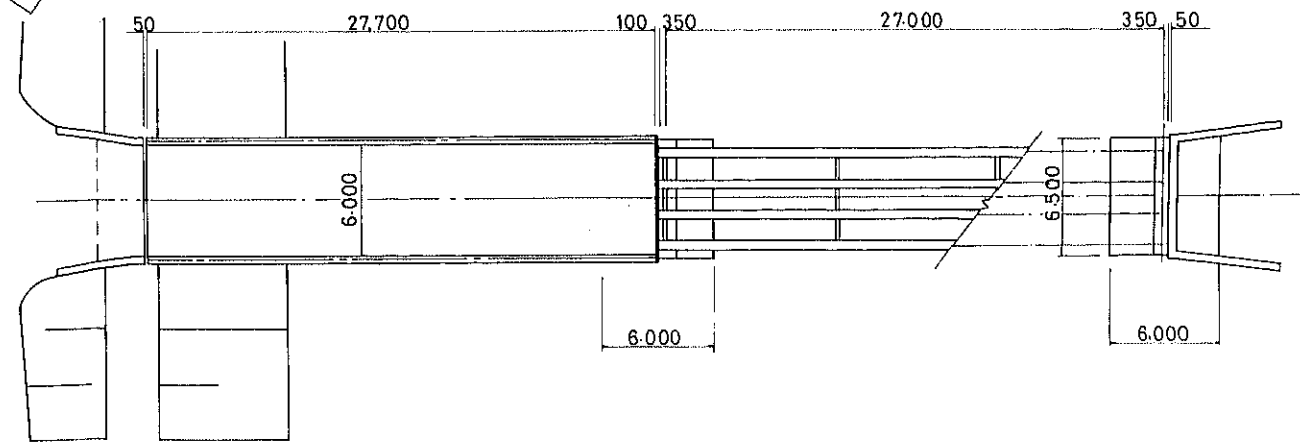
ELEVATION



SECTION



PLAN



REPUBLIC OF INDONESIA  
 MINISTRY OF PUBLIC WORKS  
 DIRECTORATE GENERAL OF WATER RESOURCES DEVELOPMENT  
 PADANG AREA RIVER IMPROVEMENT PROJECT

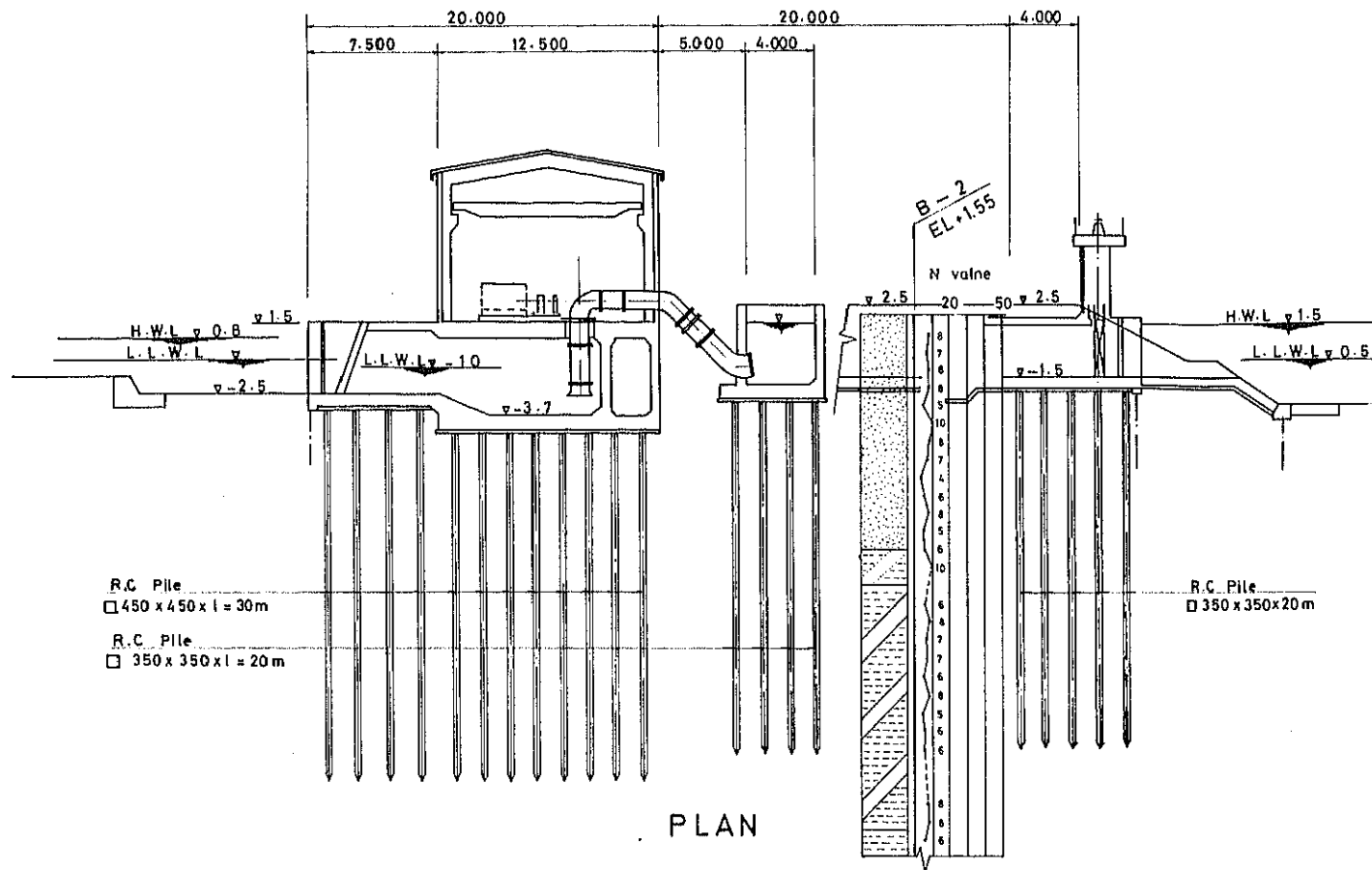
TITLE OF DRAWING  
**PROPOSED BRIDGE TYPE B**  
**Tunggal Hitam Bridge**

JAPAN INTERNATIONAL COOPERATION AGENCY  
 TOKYO, JAPAN

DWG. NO  
**1-40**



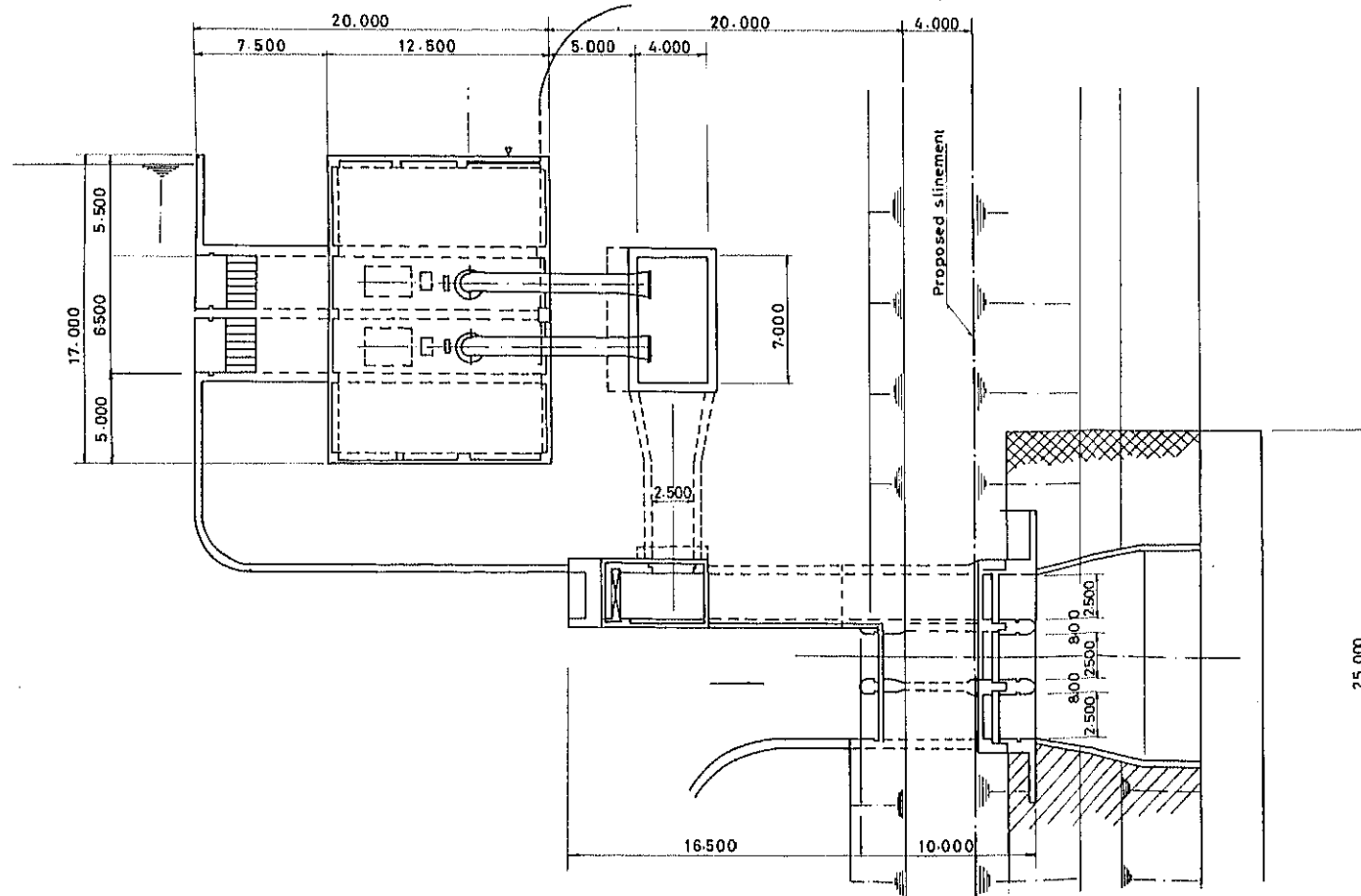
PROFILE



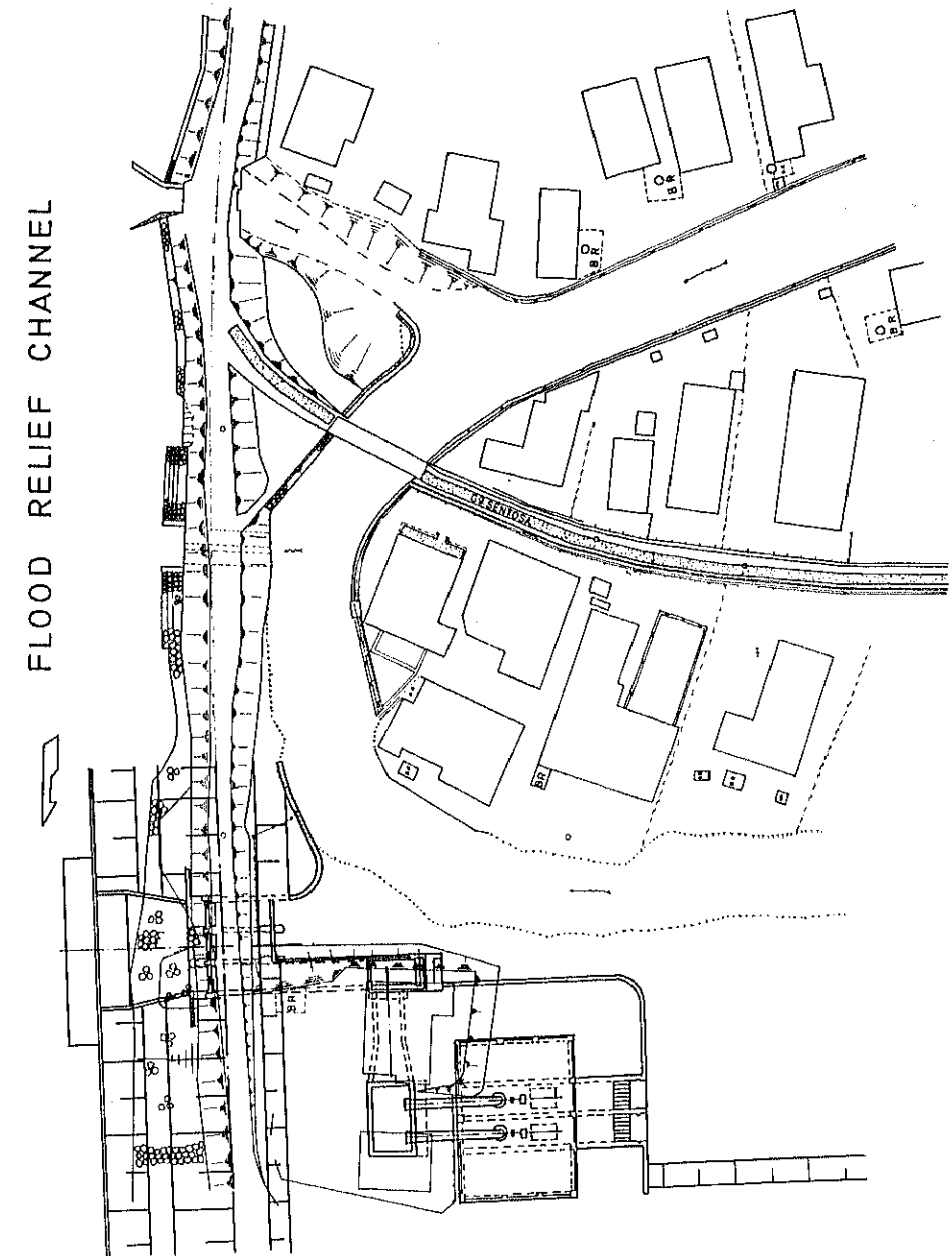
R.C. Pile  
□ 450 x 450 x l = 30m  
R.C. Pile  
□ 350 x 350 x l = 20m

R.C. Pile  
□ 350 x 350 x 20m

PLAN



LOCATION



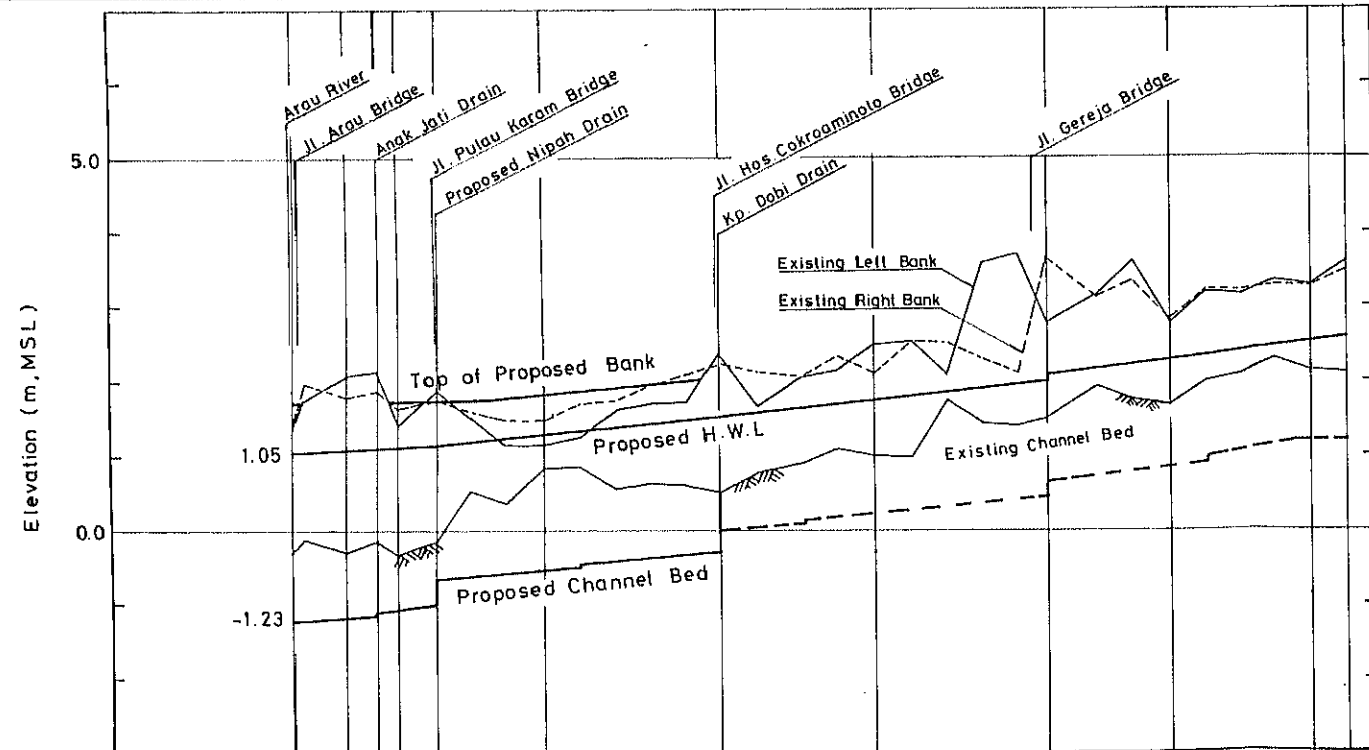
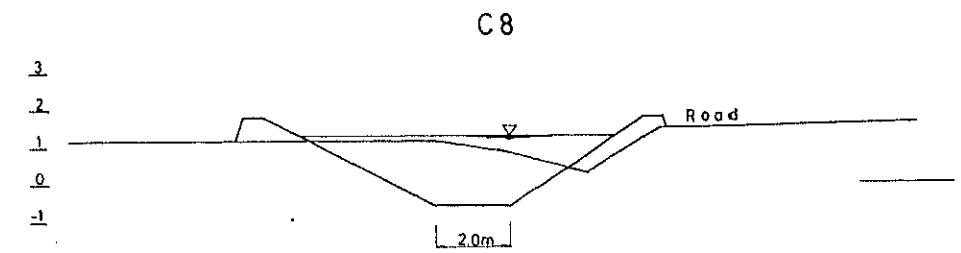
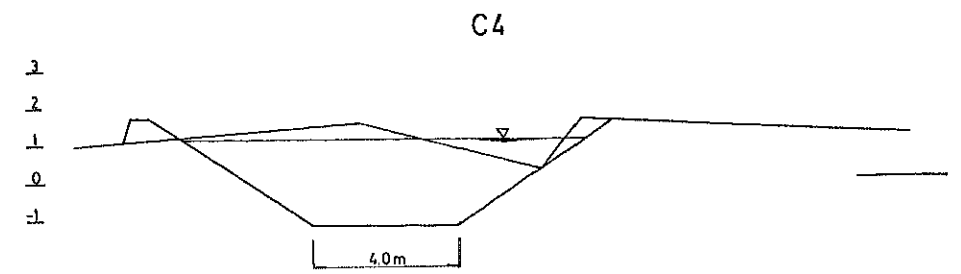
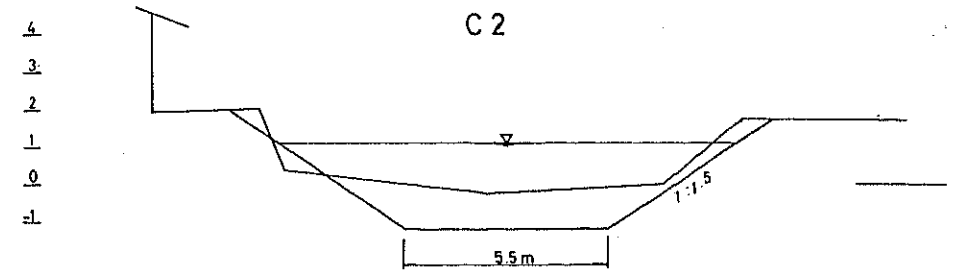
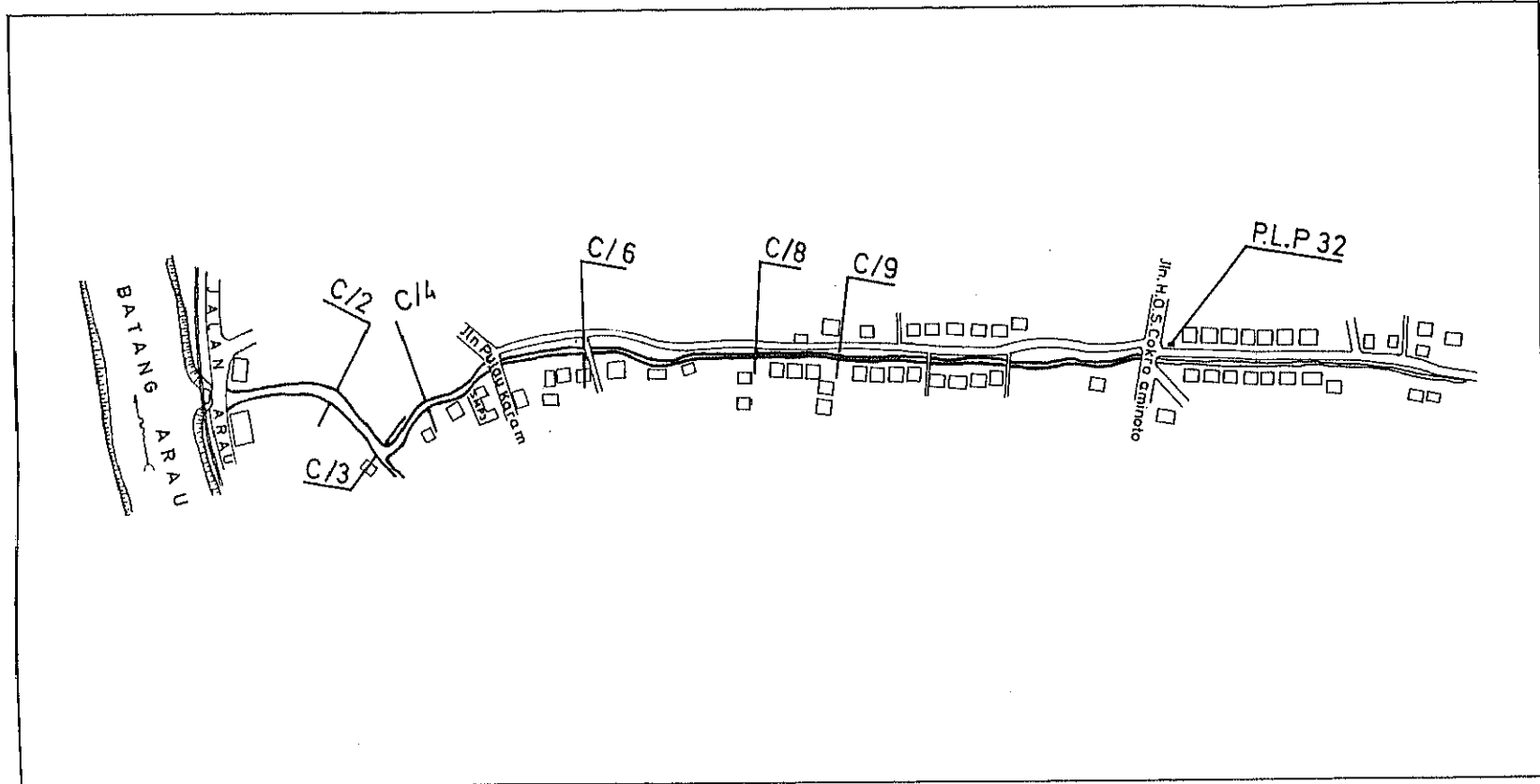
REPUBLIC OF INDONESIA  
MINISTRY OF PUBLIC WORKS  
DIRECTORATE GENERAL OF WATER RESOURCES DEVELOPMENT  
PADANG AREA RIVER IMPROVEMENT PROJECT

TITLE OF DRAWING  
**PROPOSED UJUNG GURUN PUMP  
STATION Flood Relief Channel**

JAPAN INTERNATIONAL COOPERATION AGENCY  
TOKYO, JAPAN

DWG. NO  
**II-2**





Proposed H.W.L (m)	1.05		1.135		1.55	
Proposed Channel Bed(m)	-1.23		-1.00 -0.65		-0.30	
Distance (m)	0	73	115	146	198	345
Section No.	C 0	C 2	C 3	C 4	C 5	C 8
						PLP32
						C 17
						PLP33
						C 25
						C 29
						C 30

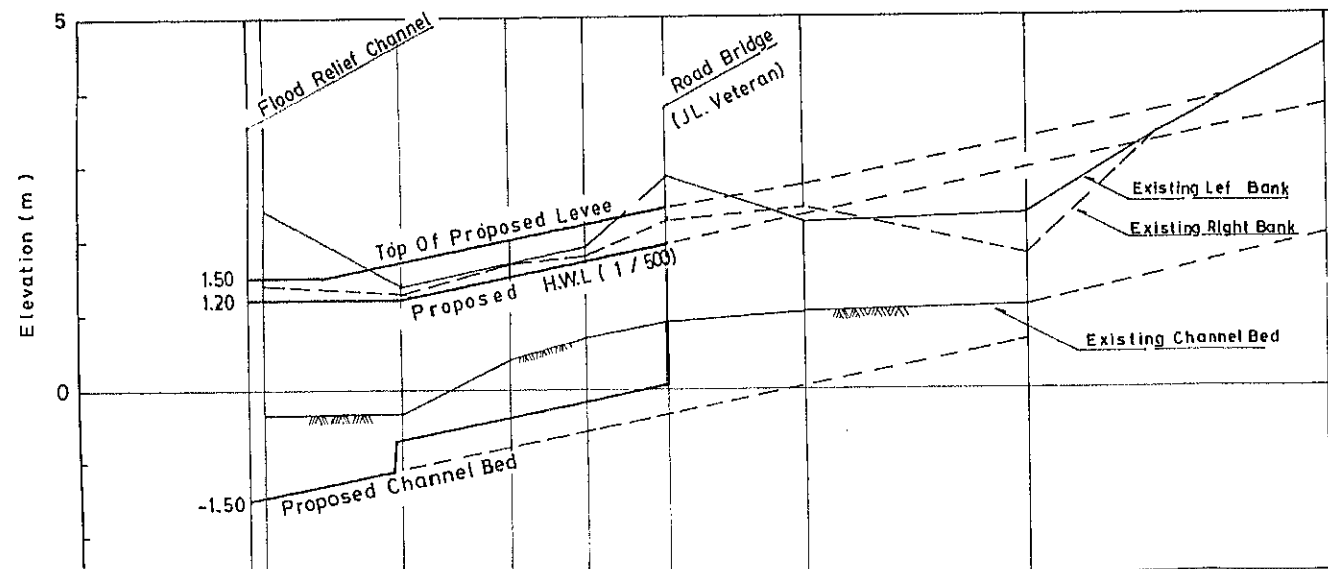
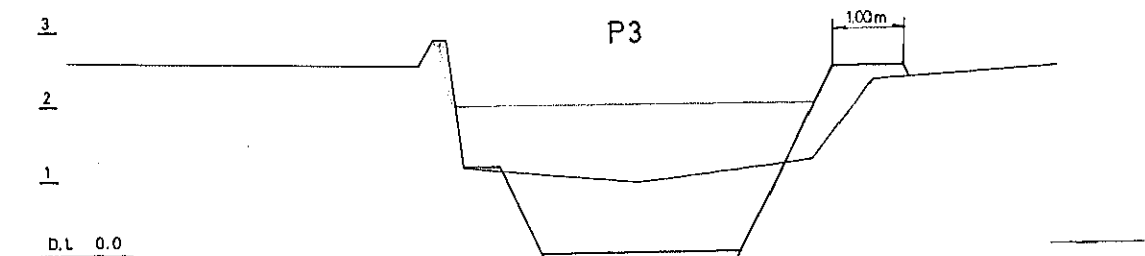
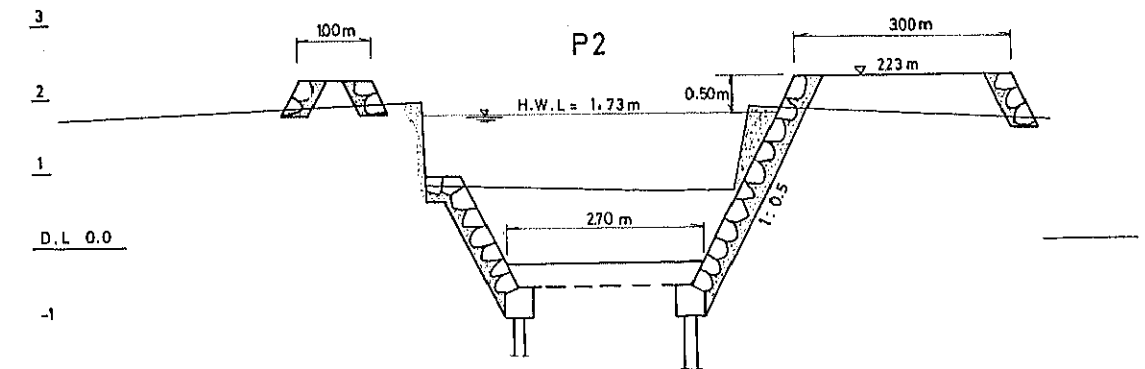
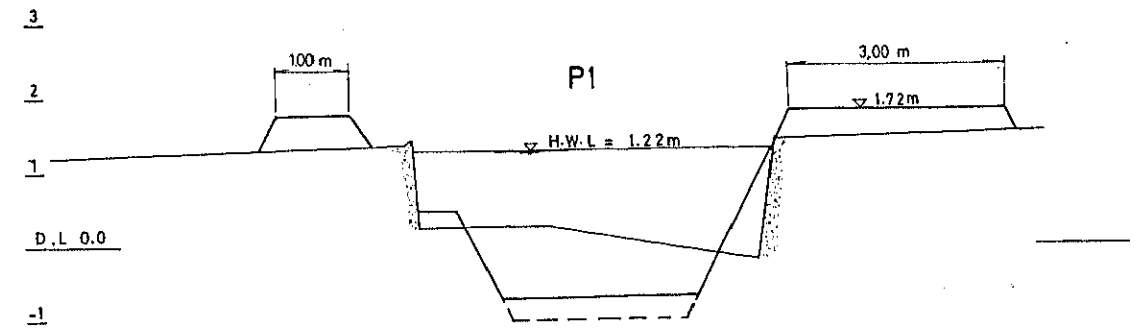
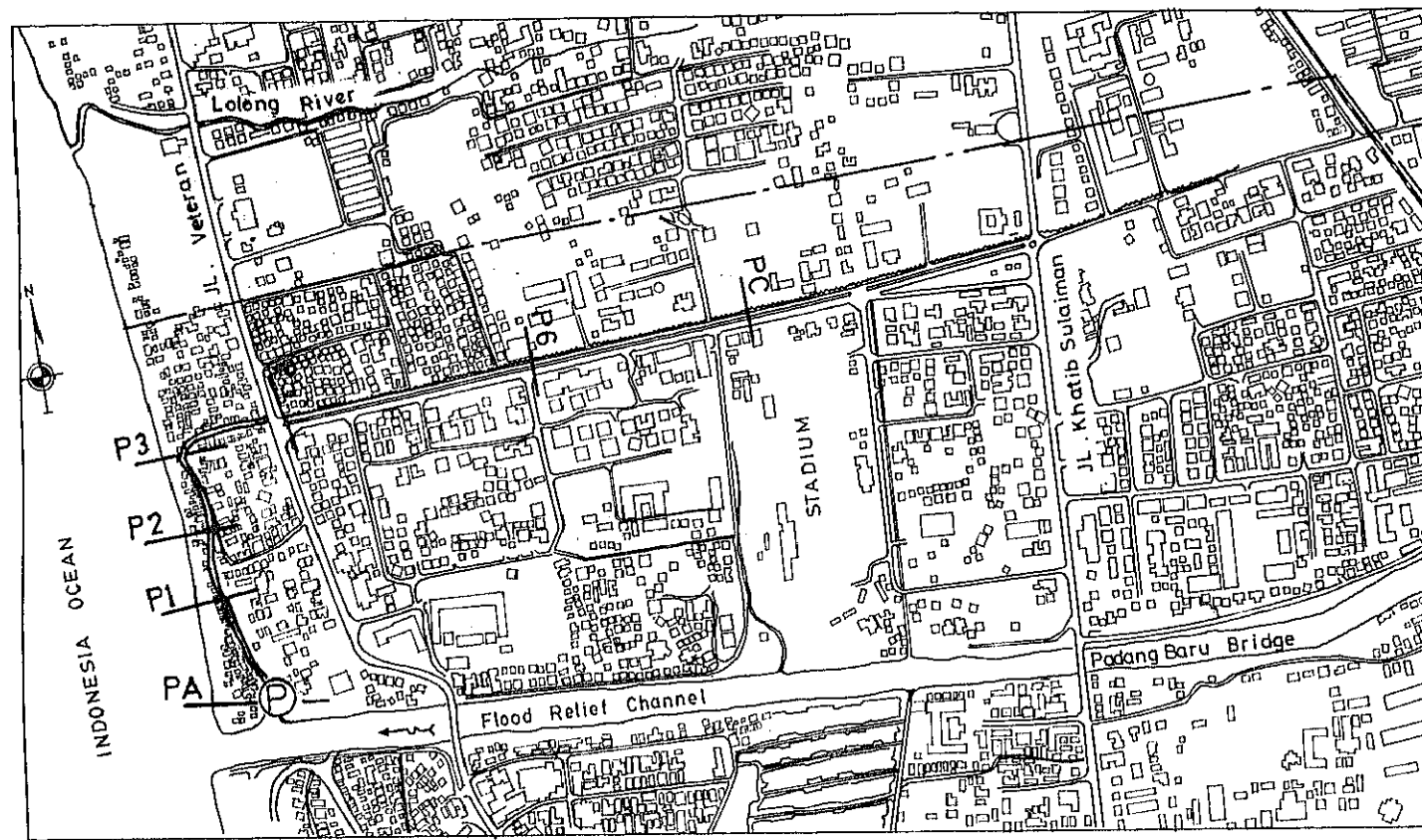
LEGEND  
 — : EXISTING  
 - - - : COMPREHENSIVE PLAN  
 — : URGENT PLAN

REPUBLIC OF INDONESIA  
 MINISTRY OF PUBLIC WORKS  
 DIRECTORATE GENERAL OF WATER RESOURCES DEVELOPMENT  
 PADANG AREA RIVER IMPROVEMENT PROJECT

TITLE OF DRAWING  
**PLAN, PROFILE OF  
 OLO - NIPAH AREA**

JAPAN INTERNATIONAL COOPERATION AGENCY  
 TOKYO, JAPAN

D.W.G. NO  
**11-3**



Proposed H.W.L (m)	1.20 1.20	1.20 1.22	1.52	1.73	1.96		
Proposed Channel Bed (m)	-1.50 -1.26	-1.10 -0.68	0.38	0.17	0.06		
Distance (m)	-20 0	180 192	341	445	560	753	1060
Section No	PO PA	P1	P2	P3	P5	P6	PC

LEGEND  
 — : EXISTING  
 - - - : COMPREHENSIVE PLAN  
 — : URGENT PLAN

REPUBLIC OF INDONESIA  
 MINISTRY OF PUBLIC WORKS  
 DIRECTORATE GENERAL OF WATER RESOURCES DEVELOPMENT  
 PADANG AREA RIVER IMPROVEMENT PROJECT

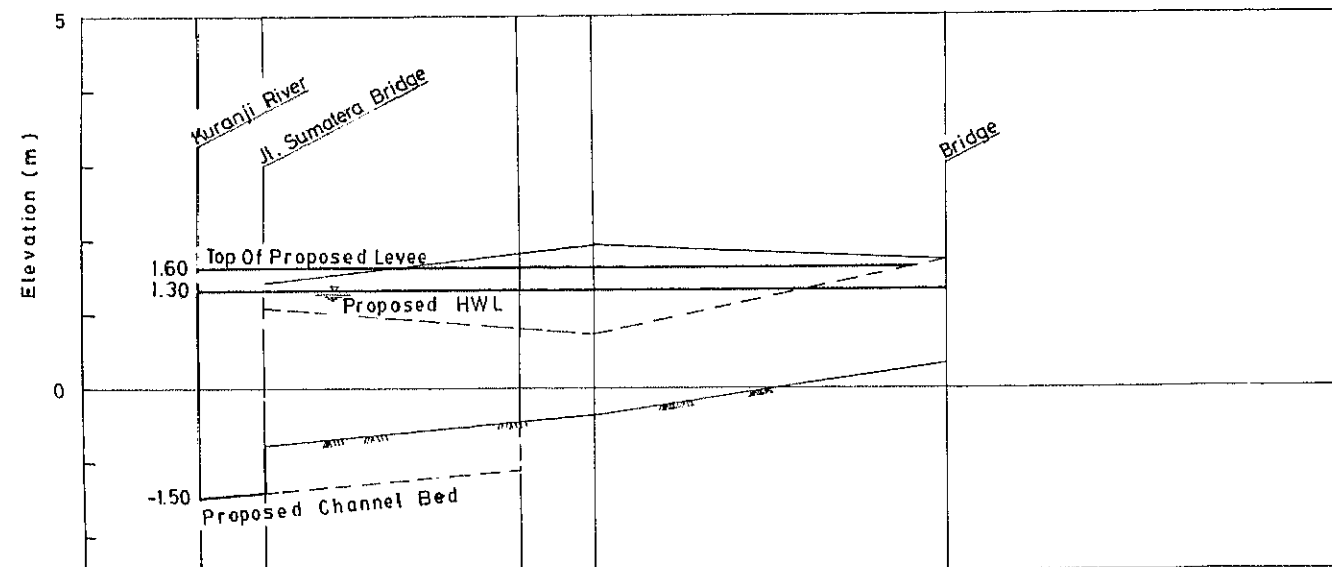
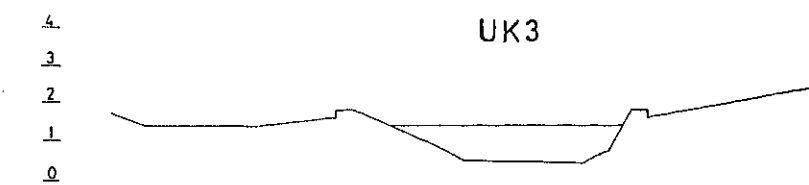
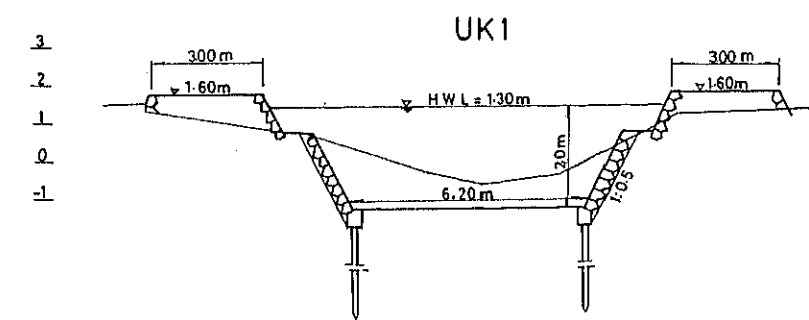
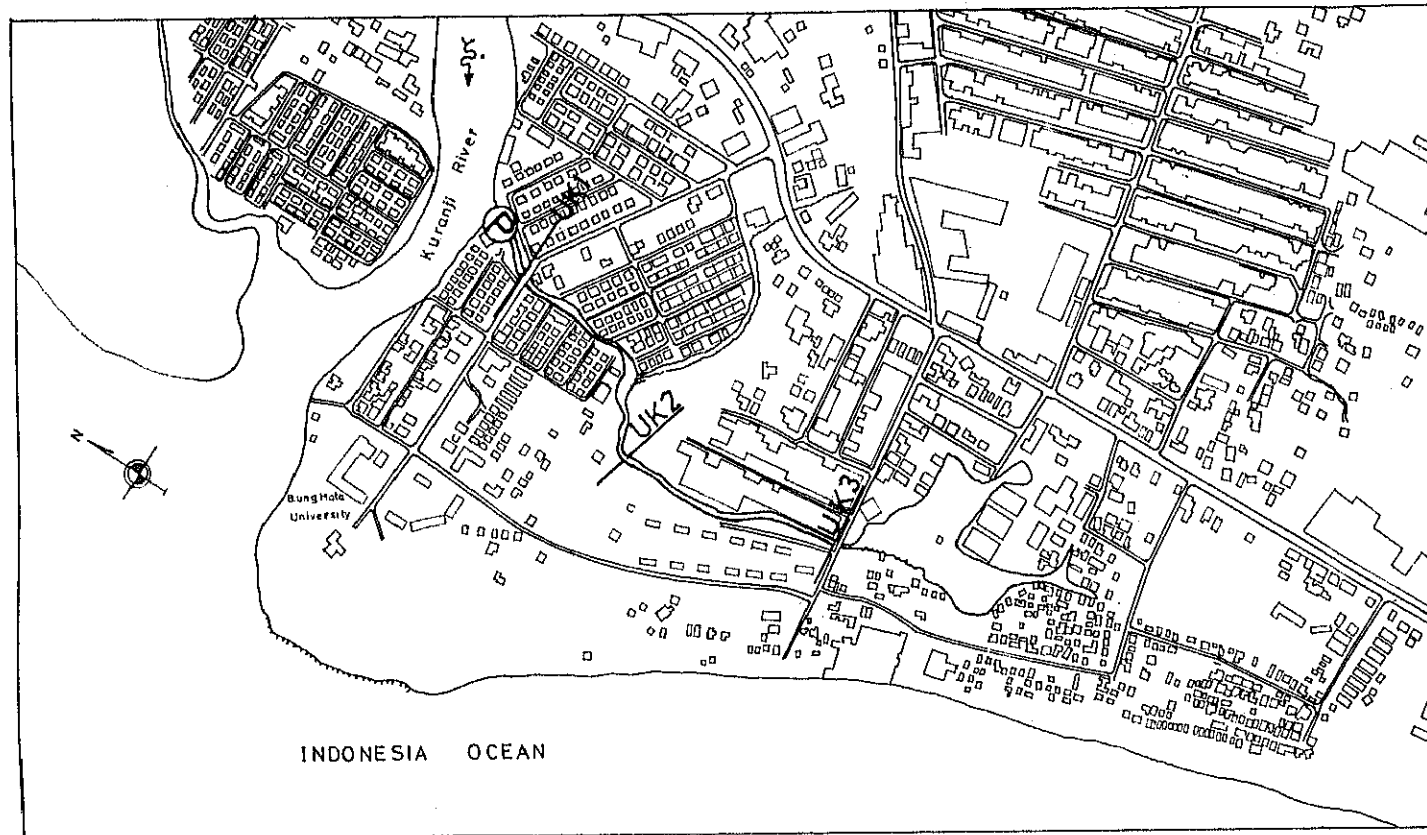
TITLE OF DRAWING

PLAN, PROFILE OF PURUS AREA

JAPAN INTERNATIONAL COOPERATION AGENCY  
 TOKYO, JAPAN

D.W.G. NO  
 II-4





proposed H-W-L (m)	1.30	1.30	1.30	1.30	1.30
proposed Channel Bed (m)	-1.50	-1.43			
Distance (m)	-90	0	350	450	94.0
Section No	UK0	UK1	UK2		UK3

LEGEND  
 — : EXISTING  
 - - - : COMPREHENSIVE PLAN  
 . . . : URGENT PLAN

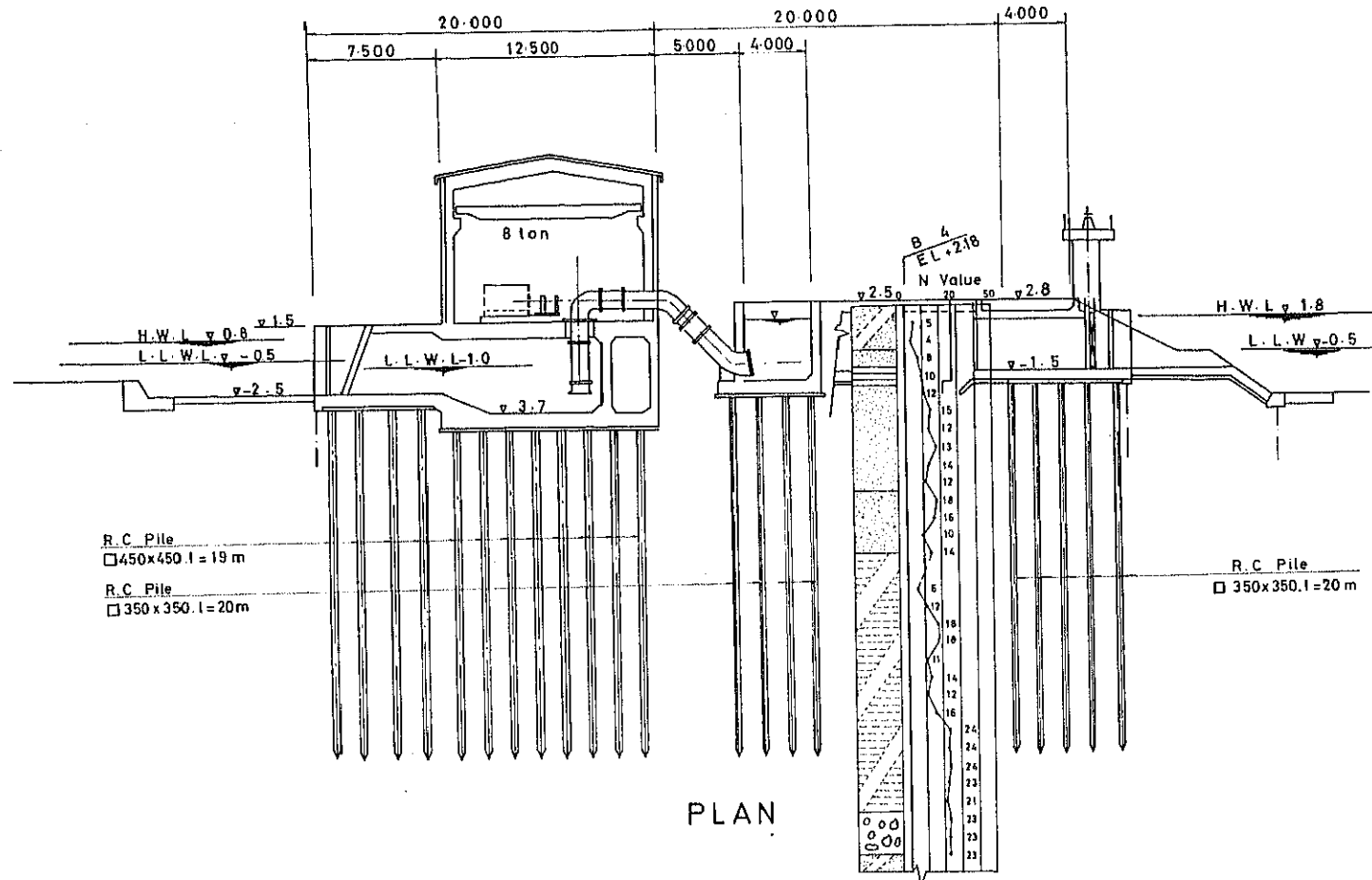
REPUBLIC OF INDONESIA  
 MINISTRY OF PUBLIC WORKS  
 DIRECTORATE GENERAL OF WATER RESOURCES DEVELOPMENT  
 PADANG AREA RIVER IMPROVEMENT PROJECT

TITLE OF DRAWING  
**PLAN, PROFILE OF ULAK KARANG AREA**

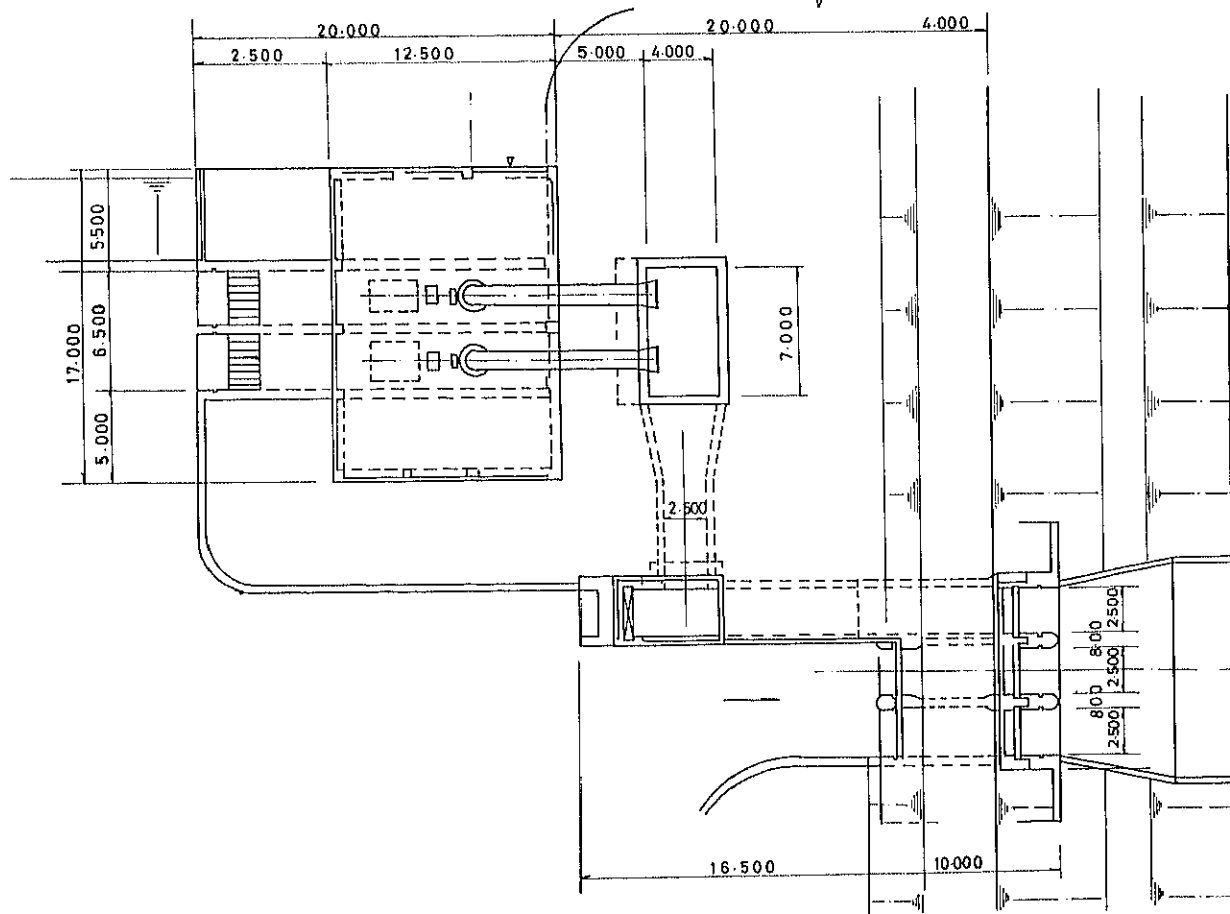
JAPAN INTERNATIONAL COOPERATION AGENCY  
 TOKYO, JAPAN

DWG. NO  
 II - 6

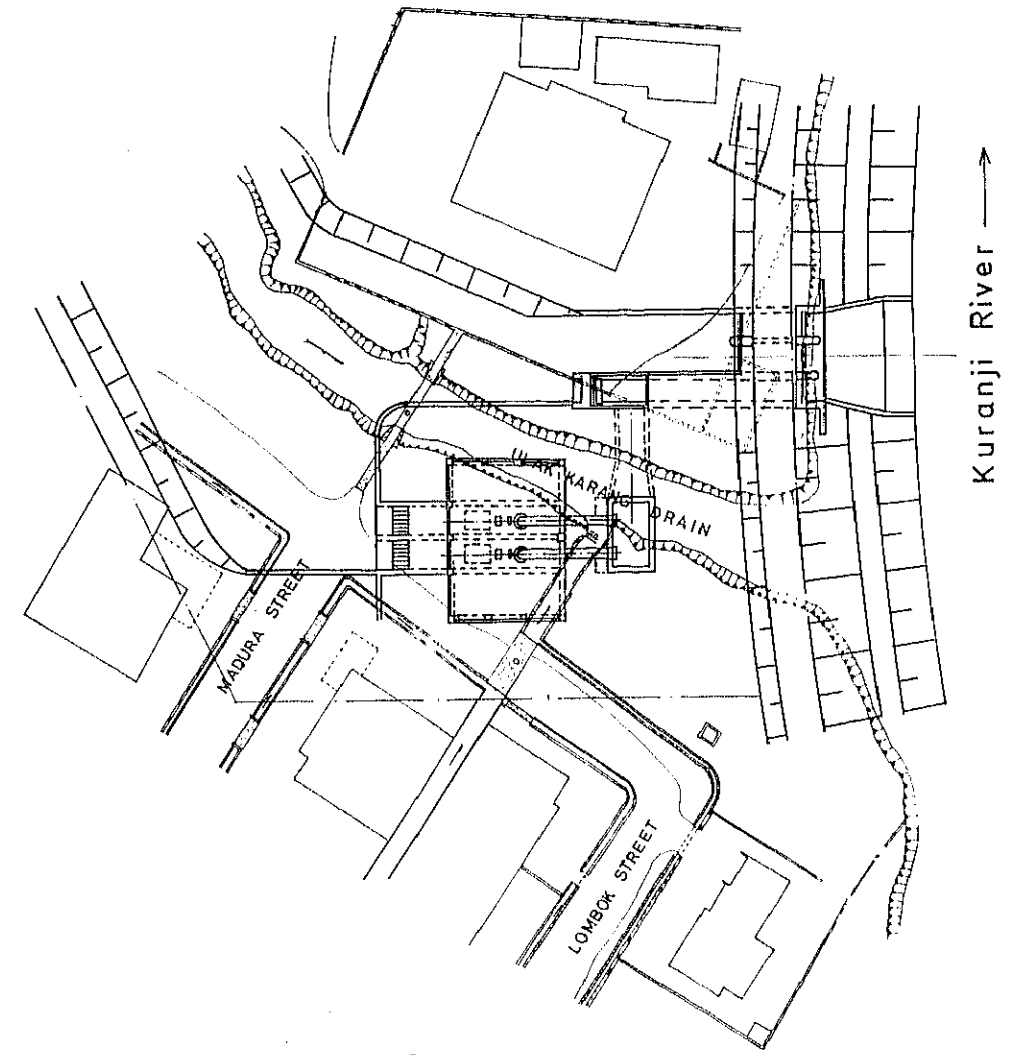
PROFILE



PLAN



LOCATION



Kuranji River  $\downarrow$

REPUBLIC OF INDONESIA MINISTRY OF PUBLIC WORKS DIRECTORATE GENERAL OF WATER RESOURCES DEVELOPMENT PADANG AREA RIVER IMPROVEMENT PROJECT	
TITLE OF DRAWING <b>PROPOSED ULAK KARANG PUMP                  STATION Kuranji River</b>	
JAPAN INTERNATIONAL COOPERATION AGENCY TOKYO, JAPAN	DWG. NO II-7





JICA