

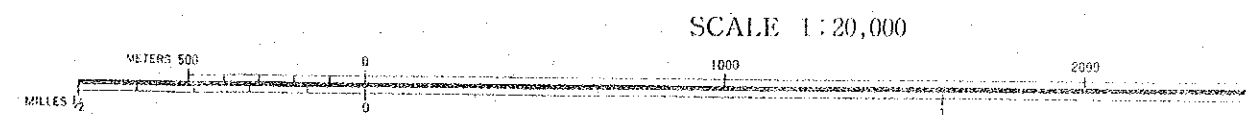


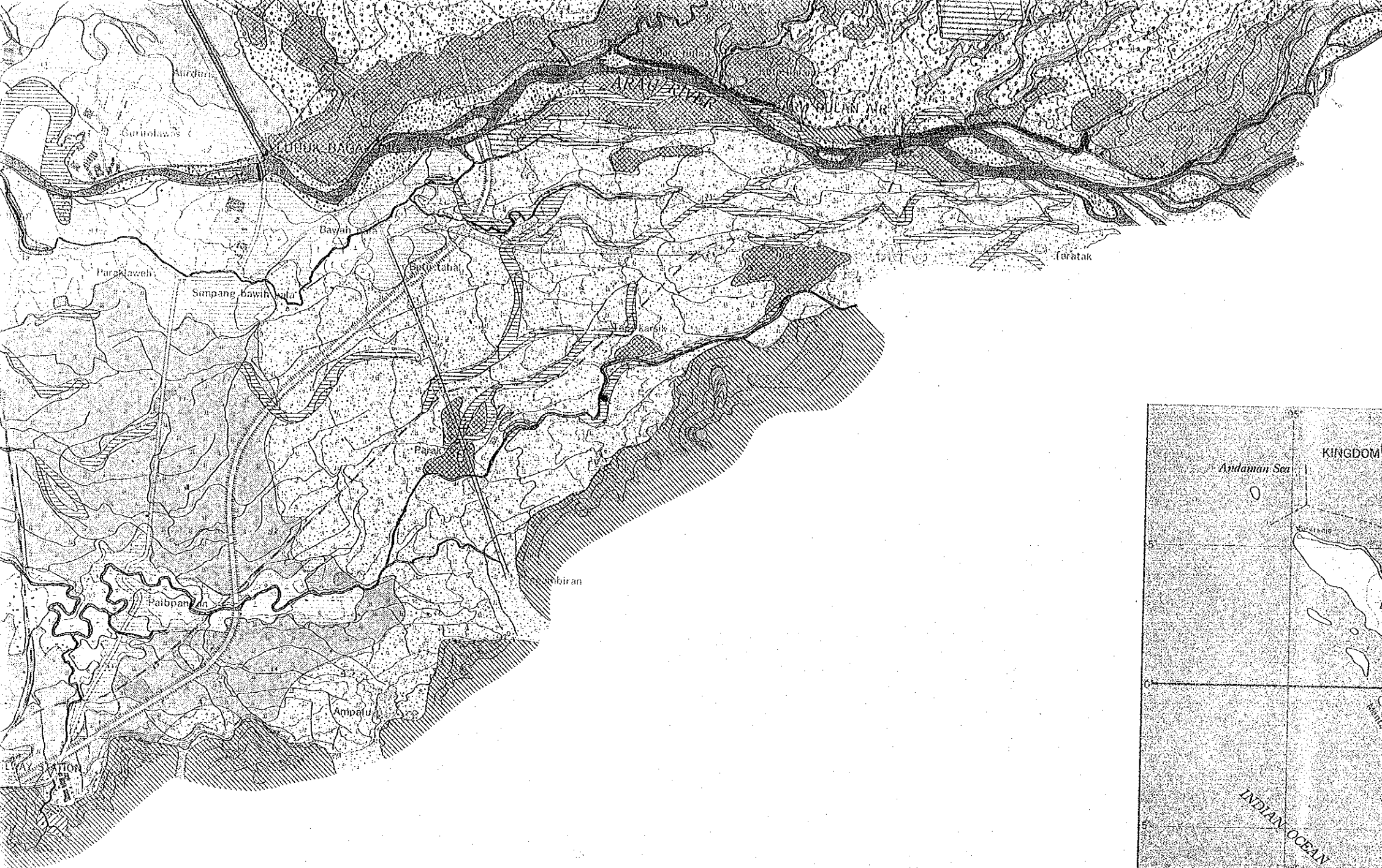
EXPLANATORY NOTES

- a. NATIONAL ROAD (> 2m)
- b. PROVINCIAL ROAD
- BY-PASS
- ROAD (< 2m)
- RAILWAY
- a. RIVER
b. BRIDGE
- a. SWAMP
b. SANDY SOIL

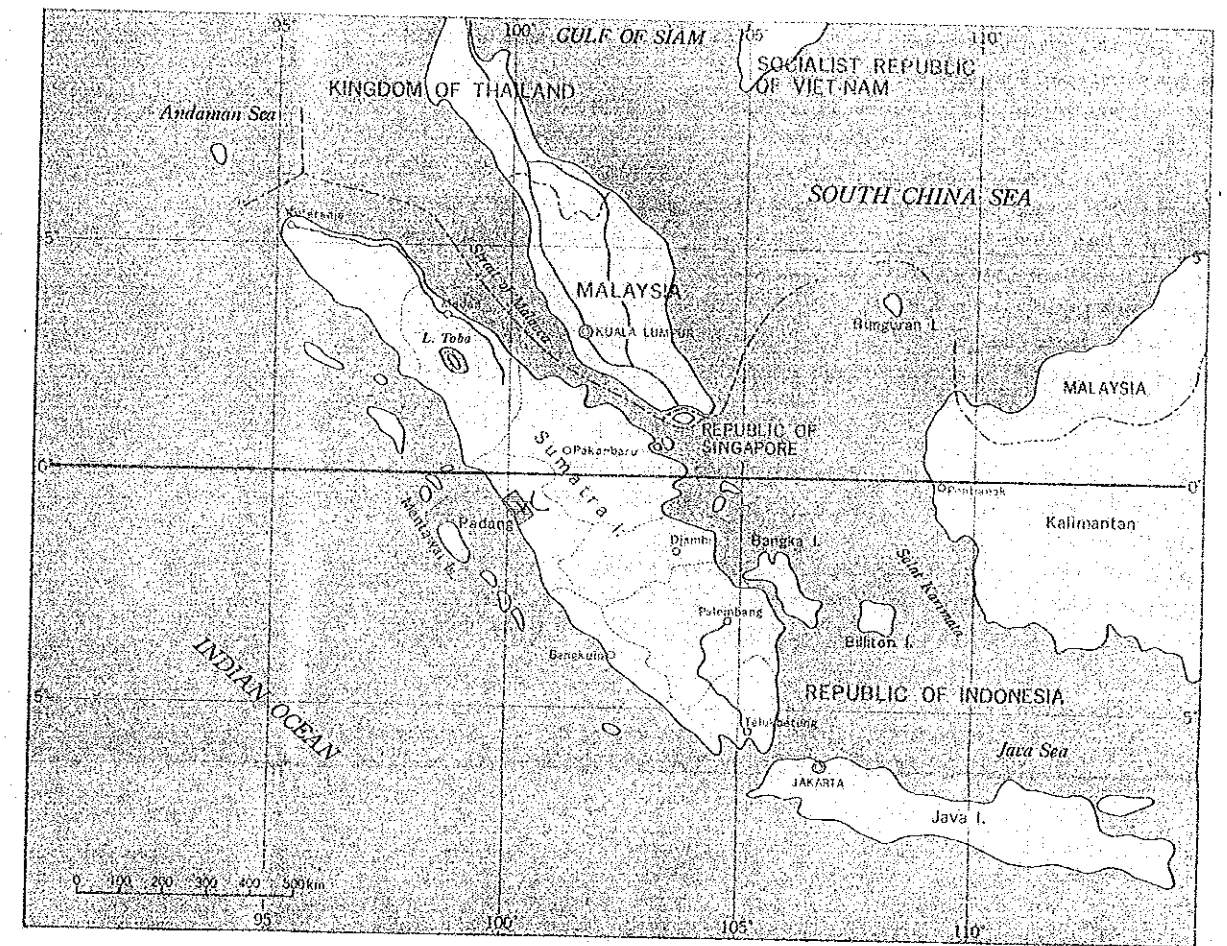
- a. ARTIFICIALLY DISSECTED AREA
b. ARTIFICIALLY FILLED UP FIELD
- a. CLIFE (> 2m)
b. PIT
- CITY AND RESIDENTIAL SECTION
- VILLAGE
- a. MOSQUE
b. COMPANY, OFFICE
c. SMALL BUILDING
- PADDY FIELD

- CONTOUR LINE
- a. GRASS LAND b. COCONUT PALM
c. COPPICE d. CLOVES
- a. UPLAND CROPS FIELD
b. MANGROVE c. NIPA PALM
- a. CONTROL POINT b. PASS POINT MODEL
c. SPOT ELEVATION
- a. GRAVES OF ISLAM
b. GRAVES OF CHINESE

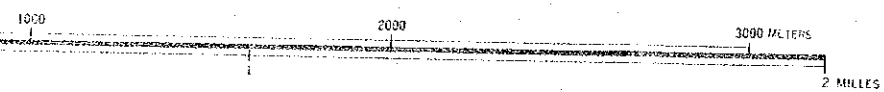




LOCATION MAP



SCALE 1 : 20,000



BASE MAP COMPILED BY THE TOPOGRAPHIC MAP (SCALE 1 : 50,000) WHICH IS MEASURED 1974 - 1975

ISSUED BY JAPAN INTERNATIONAL COOPERATION AGENCY, TOKYO, JAPAN, 1983.

PRINTED BY KOKUDO CHIZU Co., LTD, TOKYO CO.

JICA

1