

QUESTIONNAIRE

Dec., 1984

Japanese Preliminary Survey Team on the Development

Project of Semarang Port

The Republic of Indonesia

Japan International Cooperation Agency

I. GENERAL

1. We would like to have your opinions on principal policies and development plans concerned with the development project of Semarang Port as well as the informations on them, especially on the followings;

- (1) Gateway Port Policy
- (2) Integrated Sea Transport Study
- (3) Fourth National Development Plan
- (4) Cement Factory Project

Please provide us above mentioned reports.

2. We would like to have your ideas on the development policy of Semarang Port.

II. INFORMATION AND DATA ON SEMARANG PORT

Data and information on items listed up on separate forms will be required for the study on the development project of Semarang Port. Therefore, it is necessary for the preliminary study team to get outlines of the main items and to confirm availability of these data during a stay in Indonesia.

Please fill in the forms and submit us them during our stay as well as documents or materials on the items marked with (*). New information or data which have become available since 1978 are especially welcomed.

III. OTHERS

1. Please submit to us the charts of the organizations concerned with the development and management of Semarang Port. The informations on the responsibility of each organization would be much welcomed.
2. Please indicate, if possible at this time, who will be counterparts of the Indonesian side for the Japanese full scale study team.
3. Please show us, if any, the reports relative to the study on the development project of Semarang Port.

I. SOCIAL / ECONOMIC DATA

No.	ITEM OF NECESSARY DATA	AVAILABILITY		TITLE OF DOCUMENTS OR MAPS	AUTHORS OR SOURCE	PAPER PAGE	LANGUAGE
		AVAILABLE or NOT	PLACE OF AVAILABLE DATA				
	Latest five years annual report/year book/statistics on national and regional economy and economic indicators :						
1.	(a) GNP	Yes	Regional Development Planning Board I	Kedaman Dati II pada tiap2 pucut pengembangan biding PURB (1980)	Min. of Development Planning Board		Indonesian
2.	(b) Consumption	Yes	-ditto-	Brochure / Reports	-ditto-		Indonesian
3.	(c) Population	Yes	-ditto-	Keputusan (1984/8)-1988/89	-ditto-		Indonesian
4.	(d) Outputs of agriculture	Yes	-ditto-	Kedaman Keberapa Komodifikasi Fertenta di Statistik Industri (1981)	Statistik Office		Indonesian
5.	(e) Mining products	Yes	Statistic Office Jateng	Brochures / Reports / Maps	-ditto-		Indonesian
6.	(f) Manufacturing products	Yes	-ditto-	Brochures / Reports / Maps	Regional Development Planning Board		Indonesian
7.	(g) Transportation activities ;	Yes	Regional Development Planning Board I	Brochures / Reports / Maps	Trade Office		Indonesian
8.	+ Commodity flow	Yes	Trade Office Jateng	Brochures / Reports / Maps	Regional Development Planning Board I		Indonesian
9.	+ Modal split of passenger and cargo traffic	Yes	Regional Development Planning Board I	Brochures / Reports / Maps	Roads Dev. Office		Indonesian
10.	(h) Others	Yes	Roads Dev. Office	Brochures / Reports / Maps			Indonesian
	Materials of latest national/regional economic development plans/programs :						
	(a) Development programs of transportation facilities;	Yes	Roads Dev. Office	Brochures / Reports / Maps			Indonesian
11.	+ Road	Yes	Roads Dev. Office	Brochures / Reports / Maps	Roads Dev. Office		Indonesian
12.	+ Railway	Yes	Railway State Inst.	Brochures / Reports / Maps	Railway State Institution		Indonesian
13.	+ Port	Yes	Port Authority	Brochures / Reports / Maps	Port Authority		Indonesian
14.	+ Others	Yes	Air Communication	Brochures / Reports / Maps	Air Communication		Indonesian
15.	(5) Long term forecast of economic indicators	Yes	Regional Development Planning Board	Brochures / Reports / Maps	Regional Development Planning Board		Indonesian

REMARK : Items marked with (*) requires documents or maps to be collected during the study visits in INDONESIA.

II. Data of Semarang Port (Port Facilities)

No.	ITEM OF NECESSARY DATA	AVAILABILITY		TITLE OF DOCUMENTS OR MAPS	AUTHORS OR SOURCE	PAPER PAGE	LANGUAGE
		AVAILABLE OR NOT	PLACE OF AVAILABLE DATA				
16.	Maps: Layout of existing port facilities	Yes	Perumpel III Smg	Maps	Perumpel III Smg		Indonesian
17.	Port plan (past, present and future)	Yes	-ditto-	Brochures/Reports	-ditto-		English
<u>Natural condition:</u>							
18.	(1) Meteorology	Yes	Meteorology & Geophysic Station	Prochures/Reports/Maps	Meteorology & Geophysic Station		Indonesian
19.	1) Climate (general)	Yes	-ditto-	Prochures/Reports/Maps	-ditto-		Indonesian
20.	2) Wind statistics	Yes	-ditto-	Brochures/Reports/Maps	-ditto-		-ditto-
21.	3) Recods of strong winds	Yes	-ditto-	Prochures/Reports/Maps	-ditto-		-ditto-
21.	4) Statistics of meteorological conditions such as rain fall, fog, and atmospheric temperature	Yes	-ditto-	Maps	-ditto-		-ditto-
22.	5) Wheather maps of anomalous weather condition	Yes	-ditto-				
<u>(2) Sea/ Ocean</u>							
23.	1) Wave statistics	Yes	Perumpel III Smg	Prochures/Reports/Maps	Perumpel III Smg		-ditto-
24.	2) Record of high waves	Yes	-ditto-	Prochures/Reports/Maps	-ditto-		-ditto-
25.	3) Tidal level	Yes	-ditto-	Maps	-ditto-		-ditto-
26.	4) Records of anomalous tidal level such as storm tide	Yes	-ditto-	Brochures/Reports/Maps	-ditto-		-ditto-
27.	5) Tidal current	Yes	-ditto-	Prochures/Reports/Maps	-ditto-		-ditto-
28.	6) Littoral drift	Yes	-ditto-	Prochures/Reports/Maps	-ditto-		-ditto-
29.	7) Records of large tsunami	Yes	-ditto-				
<u>(3) Geography</u>							
*30.	1) Topographical map	Yes	-ditto-	Maps	-ditto-		English
31.	2) Aerial photograph	Yes	-ditto-	Photographs	-ditto-		
*32.	3) Marine chart	Yes	-ditto-	Prochures/Reports/Maps	-ditto-		Indonesian
33.	4) Bench mark	Yes	-ditto-	Prochures/Reports/Maps	-ditto-		Indonesian
*34.	5) Depth of sea bottom	Yes	-ditto-	Maps	-ditto-		-ditto-

REMARK: Items marked with (*) requires documents or maps to be collected during the study team's stay in INDONESIA.

II. Data of Semarang Port (Port facilities) : continued

3/7

No.	ITEM OF NECESSARY DATA	AVAILABILITY		TITLE OF DOCUMENTS OR MAPS	AUTHORS OR SOURCE	PAPER PAGE	LANGUAGE
		AVAILABLE or NOT	PLACE OF AVAILABLE DATA				
35.	(4) Geotechnical condition						
36.	1) Geological map	Yes	Perumpul III Sng	Maps	Perumpul III Sng		English
37.	2) Boring Log	Yes	-ditto-	Brochures/reports/maps	-ditto-		Indonesian
38.	3) Soil characteristics	Yes	-ditto-	Brochures/Reports/Maps	-ditto-		-ditto-
	4) Earthquakes	No					
39.	Latest data of port facilities :						
40.	(1) Depth, width and length of channels and basins	Yes	-ditto-	Brochures/reports/maps	-ditto-		English
41.	(2) Depth, length and construction year of each berth	Yes	-ditto-	Brochures/Rep.rts/Maps	-ditto-		Eng, I d.
42.	(3) Area and structures of transit sheds, ware-house, and open storage areas	Yes	-ditto-	Brochures/Reports/Maps	-ditto-		Indonesian
43.	(4) Type, capacity and manufacturing year of cargo handling equipment	Yes	-ditto-	Brochures/Reports/Maps	-ditto-		Eng, Ind.
44.	(5) Type, capacity and some other information of port facilities not mentioned above	Yes	-ditto-	Brochures/Reports/Maps	-ditto-		Eng, Ind.
*44.	Detail data on existing port facilities to have a possibility to be rehabilitated	Yes	-ditto-	Brochures/Reports/Maps	-ditto-		Eng, Ind.

REMARK: Items marked with (*) requires documents or maps to be collected during the study teams stay in INDONESIA.

III. Data of Semarang Port - Port activities

4/7

No.	ITEM OF NECESSARY DATA	AVAILABILITY		TITLE OF DOCUMENTS OR MAPS	AUTHORS OR SOURCE	PAPER PAGE	LANGUAGE
		AVAILABLE OR NOT	PLACE OF AVAILABLE DATA				
45.	Activities in the hinterland : (1) Area (present and future)	Yes	Regional "cv. Rahn-Board Jateng & Reg. Investment Coord. Board	Revolitanda IV (1984/1985-1988/1989)	Regional Development Planning Board & "eg. Investment Coord. Board		Indonesian
46.	(2) Economic indicators concerned with above area	Yes	Board	Proyekel			INDONESIAN
47.	Cargo traffic (annual data for recent five years)	Yes	Perumpul III SMS	Brochures/Reports/Maps	Perumpul III SMS		-ditto-
48.	(1) cargo traffic by export/import, by main routes and by commodity	Yes	-ditto-	Brochures/Reports/Maps	-ditto-		-ditto-
49.	(2) Cargo traffic by inward/outward (domestic) and by commodity	Yes	-ditto-	Brochures/Reports/Maps	-ditto-		-ditto-
50.	(3) Cargo traffic by commodity and by berth	Yes	-ditto-	Brochures/Reports/Maps	-ditto-		-ditto-
51.	(4) Cargo traffic between the port and its hinterland by mode and by commodity	Yes	-ditto-	Brochures/Reports/Maps	-ditto-		-ditto-
52.	(5) Containerized cargo traffic by export and import and by commodity	Yes	I.N.S.A. (Indonesian National Shipowners Association)	Brochures/Reports/Maps	-ditto-		-ditto-
53.	Number of ship arrivals (for recent five years) by ship tonnage, by ship type, and by berth	Yes	Perumpul III	Brochures/Reports/Maps	-ditto-		-ditto-

REMARK : Items marked with (*) requires documents or maps to be collected during the study teams stay in INDONESIA.

IV. Data of Semarang Port - Surrounding conditions

5/7

No.	ITEM OF NECESSARY DATA	AVAILABILITY		TITLE OF DOCUMENTS OR MAPS	AUTHORS OR SOURCE	PAPER PAGE	LANGUAGE
		AVAILABLE OR NOT	PLACE OF AVAILABLE DATA				
53.	(1) City plan or land use plan in the vicinity of Semarang Port	Yes	Regional Dev. Planning Board Jateng	Master Plan Kudus, BLAKAWAK	Regional Development Planning Board		Indonesian
54.	(2) Fishery activities and fishery right at Semarang Port and its vicinity	Yes	Fishery Office	Brochures/Reports/maps	Fishery Office		Indonesian
55.	(3) Coastal leisure facilities and number of tourist in the vicinity of Semarang Port	Yes	Tourist Office	Brochures/Reports/Maps	Tourist Office		Indonesian
56.	(4) Environmental factors to be considered	Yes	Regional Development Planning Board	Replitada IV (1983/85-1988/89)	Regional Development Planning Board		Indonesian
57.	(5) Data on port administration and port operation :	Yes	Perumpul III	Brochures/Reports/Maps	Perumpul III		Indonesian
58.	1) Organization, function and number of personnel in each section at Semarang Port	Yes	-ditto-	brochures/reports/maps	-ditto-		-ditto-
59.	2) Annual budget (income and expenditure) for recent five years including subsidy from the government if any	Yes	-ditto-	Reports	-ditto-		-ditto-
60.	3) Government offices and relevant enterprises	Yes	-ditto-	Brochures	-ditto-		-ditto-
61.	4) Procedure for port usage	Yes	-ditto-	Brochures	-ditto-		-ditto-
	5) Map of port district, port boundary and port area	Yes	-ditto-	Maps	-ditto-		-ditto-

REMARK :: Items marked with (*) requires documents or maps to be collected during the study team's stay in INDONESIA.

V. Data of Semarang Port - Roads and railways connected with Semarang Port

6/7

No.	ITEM OF NECESSARY DATA	AVAILABILITY		TITLE OF DOCUMENTS OR MAPS	AUTHORS OR SOURCE	PAPER PAGE	LANGUAGE
		AVAILABLE OR NOT	PLACE OF AVAILABLE DATA				
62.	<u>Road</u> (1) Map of existing road connected with and around Semarang Port (2) Latest data of road facilities 1) Width, length, permissible weight, rate of pavement and construction year of each route 2) Required time for carrying freight by each route	Yes	Roads Dev. Office	Maps	Roads Development Office		Indonesian
		Yes	-ditto-	Brochures/reports/maps	-ditto-		-ditto-
		Yes	-ditto-	Brochures/reports/maps	-ditto-		-ditto-
64.	2) Required time for carrying freight by each route	Yes	-ditto-	rochures/Reports/maps	-ditto-		-ditto-
65.	<u>Railway</u> (1) Map of existing railways connected with and around Semarang Port (2) Latest data of Railway facilities 1) Capacity and construction year of each route 2) Required time for carrying freight by each route	Yes	Railway State Dept.	Maps	Railway State Enterprise		-ditto-
		Yes	-ditto-	Brochures/reports/maps	-ditto-		-ditto-
		Yes	-ditto-	Brochures/reports/maps	-ditto-		-ditto-
		Yes	-ditto-	Brochures/reports/maps	-ditto-		-ditto-

REMARK: Items marked with (*) requires documents or maps to be collected during the study teams stay in INDONESIA.

VI. Data of other ports relevant to Semarang Port

No.	ITEM OF NECESSARY DATA	AVAILABILITY		TITLE OF DOCUMENTS OR MAPS	AUTHORS OR SOURCE	PAPER PAGE	LANGUAGE
		AVAILABLE OR NOT	PLACE OF AVAILABLE DATA				
68.	(1) Cargo traffic by export/import and outward/inward, by main routes and by commodity of ports relevant to Semarang Port	Yes	Trade Office Jateng	Brochures/reports/maps	Trade Office Jateng		Indonesian
69.	(2) Maps and data on existing facilities of relevant ports	Yes	Perumpul III Smg	Brochures/reports/maps	Perumpul III Smg		-ditto-
70.	(3) Expected cargo flows of cement to be shipped in future at Semarang Port	Yes	Perumpul III Smg	Brochures/rep.rts/maps	-ditto-		-ditto-
71.	(4) Expected cargo flows of coal to be handled at Semarang Port	Yes	-ditto-	Brochures/reports/maps	-ditto-		-ditto-

REMARK : Items marked with (*) requires documents or maps to be collected during the study team's stay in INDONESIA.

3. 収集資料一覧

事前調査団が収集した資料について、資料の名称、形態、収集先または発行機関、言語を以下にまとめる。なお、資料は、

インドネシア国の港湾一般に関する資料

PERUM IIIに関する資料

スマラン港に関する資料

コールターミナル等関連プロジェクトに関する資料

鉄道、道路に関する資料

国、地域の開発一般に関する資料

統計資料一般

に分類してある。

収集資料一覧

Semarang Area

番号	資料の名称	収集先名称又は発行機関
1	Kotamedya Dati II Semarang 1/20,000	Semarang
2	Ganbar. Reniana Pekerjaan Perencanaan Rembelokan Muara Kali Banjir Kanal Timur Kota Madya Semarang Jawa Tenga	"

Railway

1	PERUSAHAAN JAWATAN KERETA API BUKU VI LAPORAN PEMBANGUNAN * Railway Semi Government Company, Book VI, DEVELOPMENT PLAN	EKSPLORASI TENGAH SEMARANG * Central Area Exploration Semarang
2	Peta tanah di empl. Smg., Kmj., Smt., Sri pelabuhan * 港湾区域付近の鉄道図(1:2500)	DJAWATAN KERETA API, DJALAN DAN BANGUHAN * 鉄道局
3	Prospect Cement Transportation in 1985	
4	PETA JARINGAN JALAN KERETA-API, EKSPLORASI-TENGAH, REHB. JALAN KA TH 1969/1970s/d 1984/1985 * Railway Lines Map, Central Exploration Area, Railway Rehabilitation in 1969 until 1985	
5	ORGANISASI DAN TATA KERJA, PERUSAHAAN JAWATAN KERETA API, TINGKAT PUSAT, BANDUNG 1582 * Organization Chart of Railway Company	

番号	資料の名称	収集先名称又は発行機関
6	<p>PROYEK PEMBINAAN, SURUAI TEKNIS, DISAIN DAN SUPERVISI TAHUN 1983/1984, STUDI SURVAI TEKNIS DISAIN SEPUR-SEPUR PELABUHAN SEMARANG TAHAP II, LAPORAN KEMAJUAN, MARET, 1984</p> <p>* Up-grading Project, Technical Survey, DESIGN and SUPERVISION, 1983/1984, Technical Survey Study Design Railway Lines on Semarang Port, PHASE II, Progress Report, March 1984</p>	<p>P.T. TRIWEGER architects & consulting engineers, JL. ADITIAWARMAN 28A P.O. Box 120/KBT TEL. 712008 JAKARTA SELATAN INDONESIA also 0.3 Railway Office at Bandon</p>

Road

1	<p>PROP. JAWA TENGAH</p> <p>* Central Java の道路図</p>	<p>DINAS PEKERJAAN UMUM PROPINST DAERAH TINGKAT I JAWA TENGAH SUB DINAS BTNA MARGA</p> <p>* Public Works of Central Java, Sub- division of Road</p>
2	<p>PETA KELAS JALAN</p> <p>* Central Jova の道路区分図</p>	
3	<p>PETA PERHITUNGAN LALU LINTAS PROPINSI, JAWA TENGAH, MENURUT JADWAL TAHUN 1983/1984, DALAM SATUAN MOBIL PENUMPANG, (RATA-RATA SELAMA 24 JAM)</p> <p>* Passenger Car の 24 時間ごとの交通量 (1983/1984)</p>	
4	<p>PETA PERIHITUNGAN LALU LINTAS DARI JENIS KENIARAAN MOBIL PENUMPANG [M], BIS[G], & TRUCK[T], TAHUN 1983/1984 DPU. PROP. DATI.I JATENG (RATA 2 SELAMA 24 JAM)</p> <p>* 24 時間ごとの交通量調査 Passenger car [M], バス[B], トラック[T], (1983/1984)</p>	

1	<p>RENCANA PENGUNAN LIMA TAHUN KEEMPAT DAERAH 1984/1985 - 1988/1989 PROPINSI DAERAH TINGKATI JAWA TENGAH I JAWA TENGAH (REPELITA III of First Degree Regional Government CENTRAL JAWA)</p>	Regional Government of Central Jawa
2	<p>—— " —— II</p>	"
3	<p>—— " —— III</p>	"

番号	資料の名称	収集先名称又は発行機関
4	RENGANA PEMBANGNAN LIMA TAHUN KE EMPAT. DEPARTEMEN PERHUBUNGANI 1984/85-1988/89 (Ministry Communications REPELITA IV)	Ministry (communication)
5	第4次開発5ヶ年計画(開発の方向と主目標)	2
6	第4次経済開発5ヶ年計画(運輸部門)	外務省
7	PELITA IV in Sea Comm. Sector	?
8	" General	?
9	NASKAH REPELITA IV (1984/85-1988/89) SUB SEKTOR PERHUBUNGAN LAUT (CONSEPT OF PEPELITA IV: SEA COMMUNICATION SUB SECTOR)	DGSC
10	POKOK POKOK URAIAN KETUA BAPPEDA TK I JAWA TENGAH RANCAN AN REPELITA IV DAERAH	
11	新聞記事	
12	Policies and prospects for sustained development under challenging conditions REPELITA IV (A SUMMARY)	BAPPENAS

1	DAFTAR PROYEK-PROYEK PEMBANGNAN NASIONAL/ APBN TAHUN 1984/1985 DI. JAWA TENGAH (List of National Development Project in in 1984/85 in Central Jawa)	BAPPEDA
2	DAFTAR PROYEK-PROYEK PEMBANGUNAN NASIONAL/ APBN PROPINSI DATERAH TINGKAT I JAWA TENGAH TAHUN 83/84 (List of projects National Development by Government Budget in Central Jawa)	"
3	----- " ----- 1983/1984	"
4	----- " ----- "	"

番号	資料の名称	収集先名称又は発行機関
5	KERANGKA ALUAN PROFIL PROYEK: USAHA TERPADU PENGEMBANGAN UDANG, WINDU DI JAWA TENGAH, (Term of reference project profile: Integrated efforts of shrimp development in Central Jawa)	BAPPEDA
6	Laporan Perkembangan Penanaman Modal di Jawa Tengah Periodic Januari S/D Triwulan III 1984 (1 Januari S/D 30 September 1984) (Report of Investment Growing in Central Jawa from January until 30th Sept. 1984)	"
7		"
8	PROYESKI PENANAMAN MODAL DI JAWA TENGAH DALAM REPELITA IV (Prediction of investment in Central Jawa on REPELITA IV)	"
8-1	JUMLAH INVESTASI PROFIL-PROFIL PROYEK YANG DIPROMOSIKAN (Investation summary of projects which promoted)	
9	EVALUASI KEGIATAN PENANAMAN MODAL DI JAWA TENGAH SELAMA PELITA IV (Evaluation of Investation Activity in Central Jawa during PELITA III)	
10	Laporan Perkembangan Penanaman Moda di Jawa Tengah Selana Tahun (1 Januar s/d 31 December) (Report of Investation Growth in Central Jawa during 1983)	
11	KEADAAN BEBERAPA KOMODITI PERTANIAN TERTENTU PARA TIAP-TIAP PUSAT PENGEMBANGAN ANALISA DATA 1980 (Condition of Several Agricultural Commodities between Development Centers from Analizing Date 1980)	

番号	資料の名称	収集先名称又は発行機関
12	KEADAAN DATI II PADA TIAP-TIAP PUSAT PENGEMBANGAN BERDASARKAN PRODUKSI DOMESTIK REGIONAL BRUTO (PDRB) 1980 (Condition of Residence in Every Development Centre based on Regional Domestic Production 1980)	BAPPENDA

1	National Income of Indonesia 1975-1980	
2	----- " ----- 1979-1983	
3	Statistical Yearbook of Indonesia	
4	Cargo Loading and Unloading at Ports in Indonesia (1982)	
5	Jawa Tengah Dalam Angka 1983	
6	Jawa Tengah Mempangun Central Jawa Develops.	
7	Buku Sakti Jawa Tengah 1984	
8	The Development of Industrial Zones. to Support Capital Investment in Central Jawa	
9	A Guide for Investors	
10	Jawa Tengah Dalam PETA 1981	

Central on Ports

1	Port Development Policy in Indonesia	DGSC
2	Organization of Sea Com.	"
3	Budgets and Cargo Volume	"
4	Port of Semarang	Surabaya Port
5	Penlana Pengembangan Pelabuhan Tanjung Revalc (Surabaya)	

番号	資料の名称	収集先名称又は発行機関
6	Tanjung Dniok (Data)	
7	" Map	

ISTS

1	Integrated Sea Transport Study (Final Report) Adjustment of Seaborne Cargo Movements in Relation to the Export Drive Volume 1 Main Report June 1982	DGSC Netherlands Maritime Institute
2	----- " ----- Volume 2 Annexes June 1982	"
3	Integrated Sea Transportation Study Final Report Volume 1 Summary and Conclusions August 1982	"
4	Integrated Sea Transport Study Adjustment of Seaborne Cargo Movements in Relation to the Export Drive Extrapolation to 1990	"

MSDP

1	Maritime Sector Development Program in Indonesia June 1983	DGSC
2	Maritime Sector Development Program in Indonesia May 1983	"
3	Position Paper I on Action Program Maritime Loan III June 26, 1982	"
4	Findings and Recommendations ILS-Team for MSDP Project I Implementation ILS-System-Phase I Nov. 1983	"

番号	資料の名称	収集先名称又は発行機関
5	Maritime Sector Development Program Route Calculations ILS-Project-Phase I 1 Sep. 1984 Volume 1 Main Report October 1982	DGSC
6	Sistim Standi Angkatan Lant Terpadu	47 Surabaya Port

PERUM III

1	Organization Chart of Semenary Branch of PERUM III	スマラン港
2	The Ministry of Communication Decision Number: KM 194/OT001/PHB-83 ON The Organization and Administration of the Public Company Sea Port III * PERUM III の機構図	
3	Decree of the Minister of Communication Number: KM200/OT001/PHB-83 ON The Organization and Performance of the Branch of the Public Sea Port III * PERUM III の地方支局の機構図	
4	Elucidation on Government Regulation Number 11 of 1983 on Harbour Development * 港湾開発に関する規則の抜粋	
5	The Republic of Indonesia Government Regulation No. 16 of 1983 ON Public Company Sea Port III (PERUSAHAAN UMUM PELABUHAN III) * PERUM III に関する規則	

番号	資料の名称	収集先名称又は発行機関
7	Government Regulation of Republic of Indonesia No. 11, No. 14, No. 15, No. 16, No. 17, No. 18 (1983)	
8	Government Regulation 一建～四建及び Drefgeing PERUMの組織に関する規則	
9	港資料	
10	Budget 資料	

Semarang Port

1	Rencana Indok Pengembangan Relabuhan (Grand Plan of Semarang Port) 1/10,000	Semarang Port
2	Semarang TGL 14-3-1980 An Gubernur Kepla Dacrah TKI Jawa Tenga Kepala Direktorat Agraria (Land use)	"
3	DAFTAR ISI (目次のみ)	"
4	SITUASI PELAZUHAN SEMARANG Des. 1982 (1/2,000)	"
5	Semarang Port at a glance April 1984 Rehabilitation and Development of Semarang Port Project	"
6	Evaluation Activities of Semarang Port Year 1983/1984	
7	Laporan Tahunan 1983/1984 PELABUHAN SEMARANG (表紙のみ資料)	DGSC
8	Pelabuhan Lant Semarang Menunjang Pengembangan Daerah Jawa Tengah	DGSC Port of Semarang

番号	資料の名称	収集先名称又は発行機関
9	Keputusan Bersana Meteridalam Negeridan Menteri Perrubungan (Boundary of Semarang Port)	

Project-ongoing

1	Final Report Semarang Port Project (Urgent Improvement Program) March 1981	Semarang Port
2	Soil Investigation E/S (抜粋)	"
3	Survey in Construction	

Local Terminal

1	Renca Terminal Batubara Dipelabuhan Semarang Mei 1984	Administrator Polabuhan Semarang
2	Coal Transportation 関連 3 省庁会議資料一式	DGSC
3	Geographical Map of the Magelang and Semarang Quadrangles, Java	"
4	Batubara Info-Brosur 3-1983	Directoral General Daya Mineral
5	Others Maverals in インドネシア語	

Cement

1	PROSPECK EXPOR SEMEN	
2	P.T. SEMEN PURWADAI	

4. 面会者リスト

(1) 在ジャカルタ日本大使館

中村公使

宿利一等書記官

(2) JICA ジャカルタ事務所

山村所長

西尾所員

(3) JICA 派遣専門家 (DGSC)

渡辺専門家

田端専門家

(4) OECF ジャカルタ駐在員事務所

篠塚首席駐在員

木山駐在員

インドネシア国関係者

1. Mr. HABIBIE : DIRECTOR GENERAL OF SEA COMMUNICATION
2. Mr. ACHMAD : SECRETARY GENERAL OF SEA COMMUNICATION
3. M. SUNYOTO : DIRECTOR PORT & DREDGING.
4. S.T.TURSONO (Ir) : CHIEF SUB DIT II.
5. Mr. MONINGKA : PORT AND DREDGING
6. SYAFRUDIN (BE) : SEMARANG PORT
7. E. BATUBARA (Ir) : HEAD OF PORT FACIELITIES
8. SOENARNO (Ir) : HEAD OF PLANNING DIVISION
9. SUDJANADI (Drs) : PLANNING DIVISION
10. Mrs. OLGA SUYONO (SH) : LEGAL DIVISION
11. SUYARSO (Ir) : PLANNING DIVISION
12. SUWANDI (Ir) : PORT & DREDGING
13. SARWANTO (Ir) : PORT & DREDGING
14. BAGIONO (BE) : PORT & DREDGING
15. SYAMSIR (BE) : PORT & DREDGING
16. RINTO MULYONO : BRANCH MANAGER OF PORT OF T.P.
17. AHMADI EMKA : HEAD AND DATA INFORMATION CENTRAL OFFICE.
(PERUM II)
18. WIDYANA : HEAD OF SERVICE DIVISION.

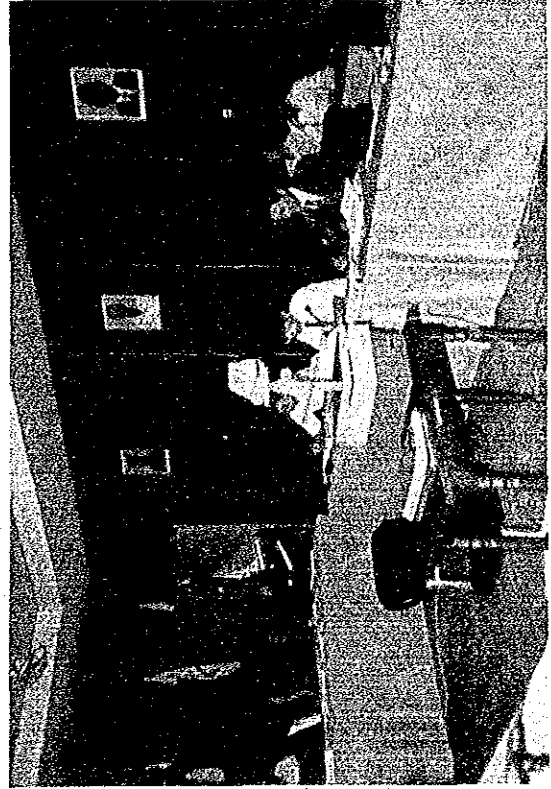
5 現地写真



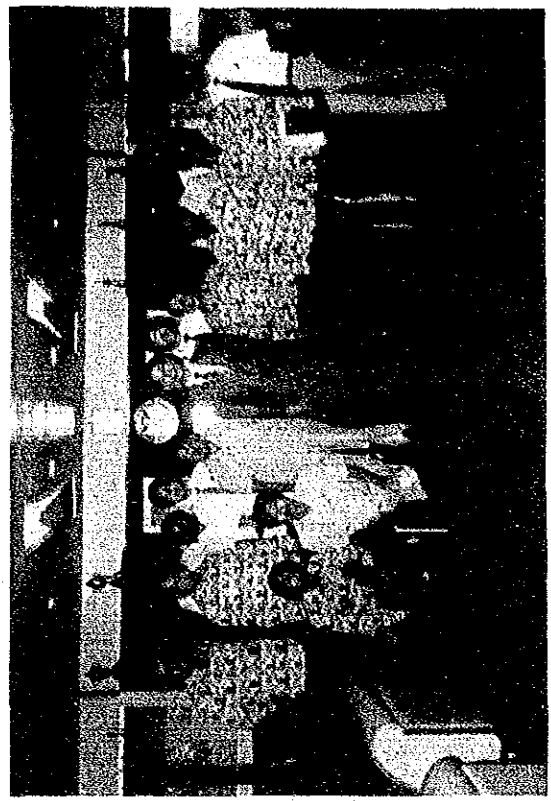
S/Wのサインの交換



DGSCスタッフと局長との打ち合せ



スマラソンでの会議



ステークホルダー関係者

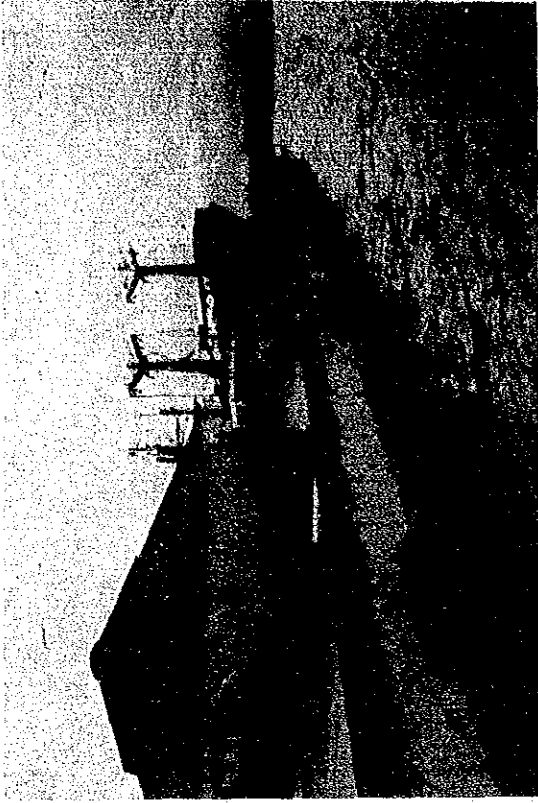
くスマラン港



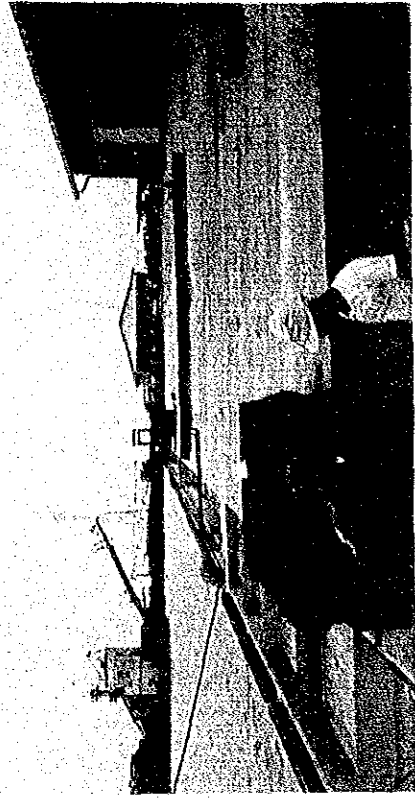
Inner Harbour (リハビリテーション地区)



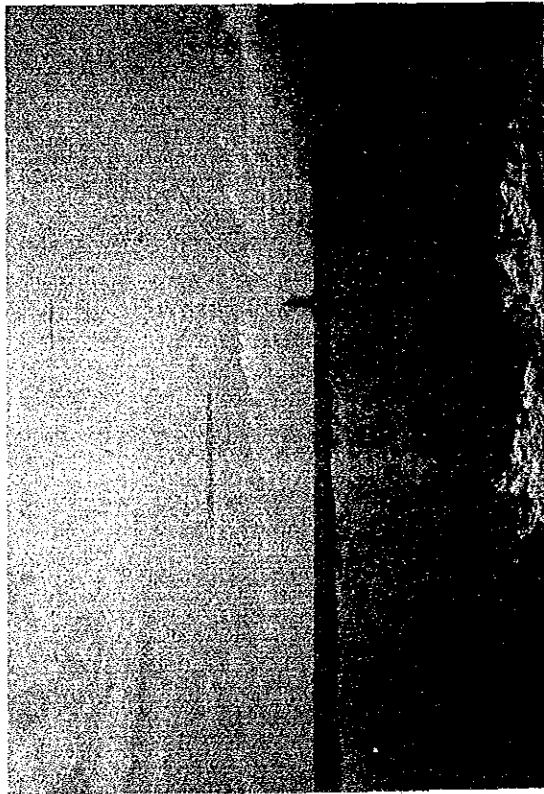
長期計画の直背後



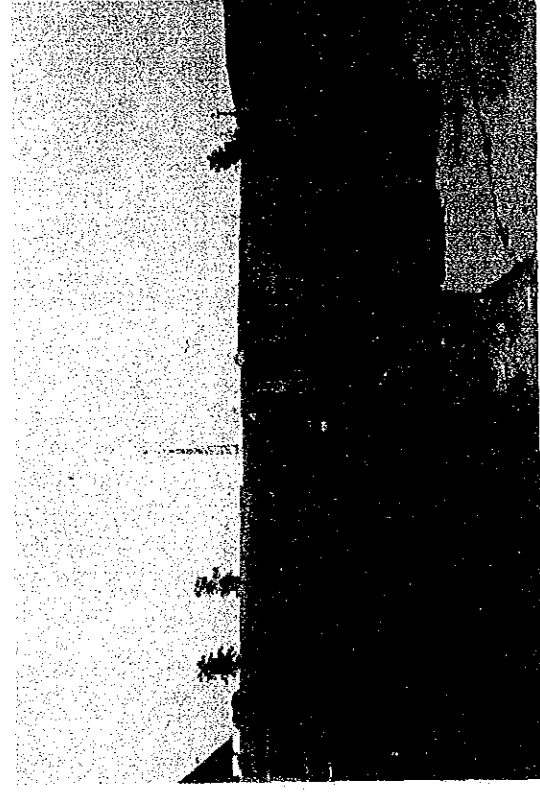
19 m 岸



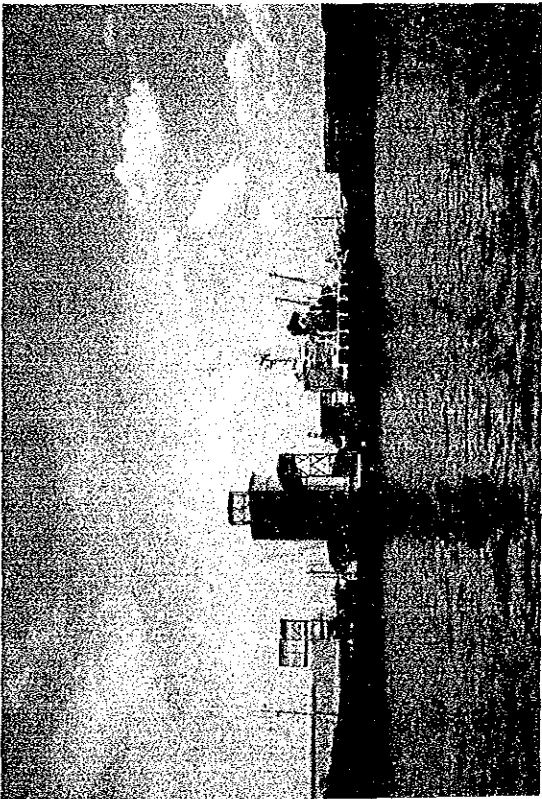
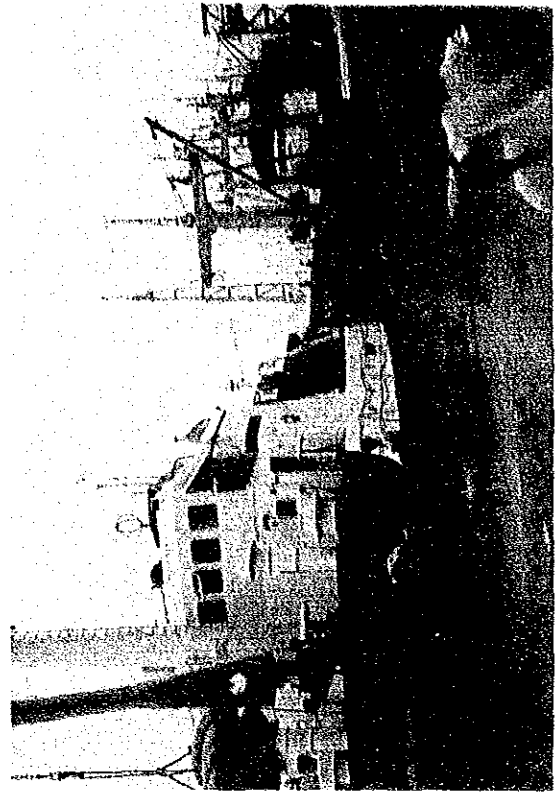
19 m 岸へき (工事中)



西防波堤 (越波がみられる)



Inner harbour



〈タンジュン・プリオク港〉

〈スラバヤ港〉

JICA