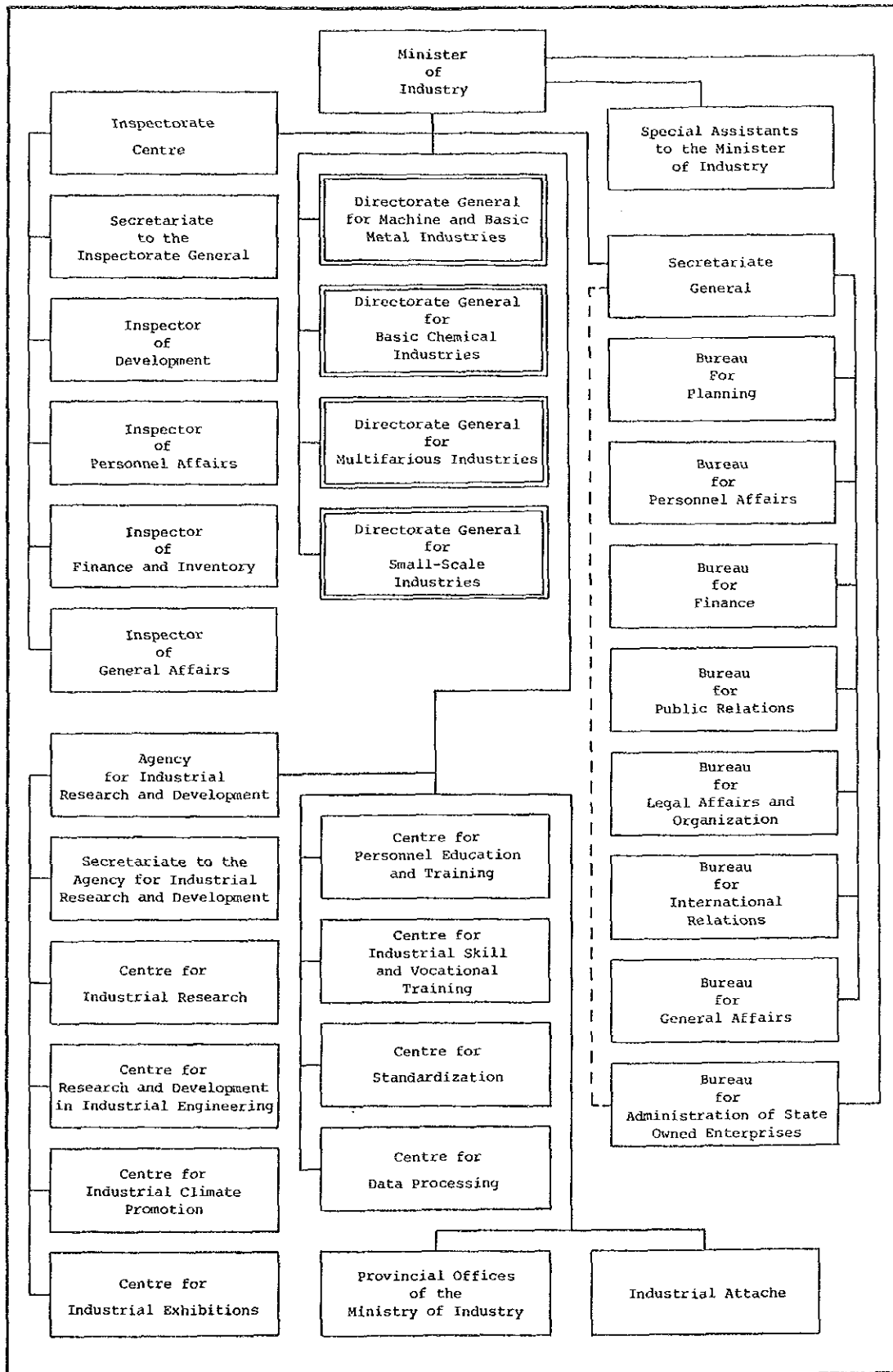


**ANNEX V BACK DATA FOR DELETETION PROGRAM**



Figure ANX V-1

ORGANIZATION CHART OF THE MINISTRY OF INDUSTRY



Note: See next page for sub-organization chart of the each Directorate General (D.G.).

Figure ANX V-2

ORGANIZATION CHART OF EACH DIRECTORATE GENERAL

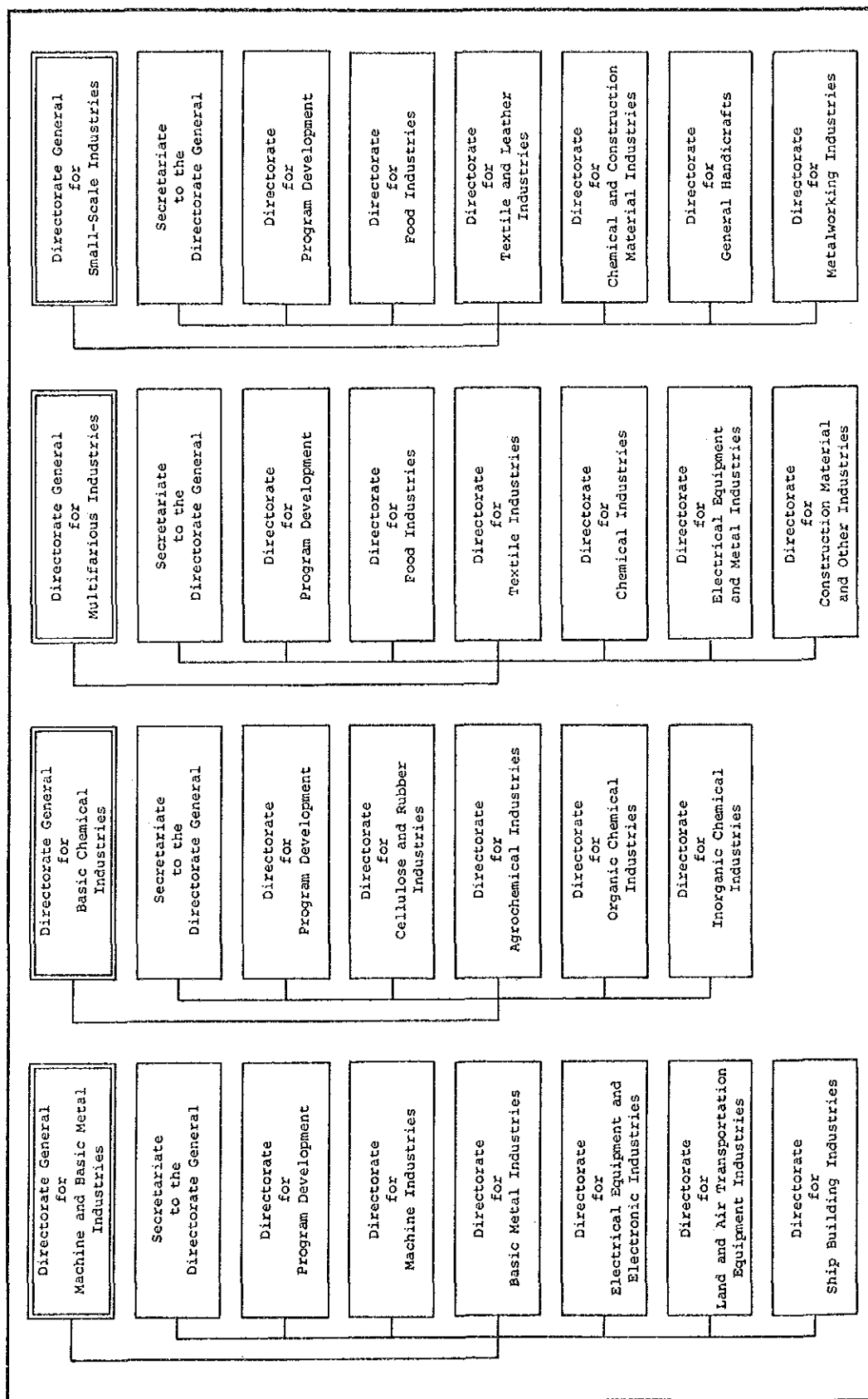


Table ANX V-1

## LIST OF COMPANIES APPOINTED TO PRODUCE MACHINE TOOLS

No.	Names of Companies	Kinds of Machines	Maximum Specifications (mm, Ton)	Totals of Annual Production (Units)
1	PT (Persero) IMPI	Lathes	Centre distance 1500 Centre height 200	400
2	PT PIMSF	1. Drill combination fries machine. 2. Stationary drilling machine 3. Plate rolling machine 4. Plate folding machine 5. Shearing machine 6. Punching machine 7. Press folding machine 8. Column drilling machine	Table size 240 x 600 Bit diameter 32 Bit diameter 13 Plate size 2500 x 3 Plate size 2500 x 2 Plate size 1270 x 2 Pressure 3 Plate thickness 3 Pressure Bit diameter $\phi$ 30	500 2,100 500 400 400 200 100 200
3	PT SARANA IDEA UTAMA	1. Lathes 2. Shearing machine 3. Plate rolling machine 4. Plate folding machine 5. Pipe bending machine	Centre distance 1500 Centre height 180 Plate size 1270 x 2 Plate size 2500 x 3 Plate size 2500 x 2 Pipe size diameter 50	300 400 400 400 400
4	PT SUMBER BAHAGIA	1. Lathes 2. Stationary drilling machine 3. Forging machine 4. Punching machine	Centre distance 1500 centre height 180 Bit diameter 13 Pressure 30 Pressure 3 Plate thickness 3	300 600 100 300
5	PT CIPTA KARYA	Stationary drilling machine	Bit diameter 13	400
6	PT MEDAN GERAK JAYA	1. Forging machine 2. Shearing machine 3. Stationary drilling machine 4. Press folding machine 5. Knee type freis machine	Pressure 250 Plate size 250 x 5 Bit diameter 13 Pressure 80 Size 250 x 1200	150 150 500 150 100
7	PT BINTANG MAS INDUSTRI	1. Forging machine 2. Lathes	Pressure 250 Centre distance 150 Centre height 180	1,000 300
8	PT OYAHA	1. Sawing machine 2. Surface grinding machine 3. Column drilling machine	Material diameter 180 Table size 220 x 500 Bit diameter $\phi$ 30	750 50 75
9	PT TOOLS INDONESIA	1. Lathes 2. Shearing machine 3. Stationary drilling machine 4. Plate folding machine 5. Plate rolling machine 6. Knee type Freis machine 7. Surface grinding machine	Centre distance 150 Centre height 180 Plate size 1270 x 2 Bit diameter 13 Plate size 2500 x 2 Plate size 2500 x 3 Table size 250 x 1200 Table size 220 x 500	300 300 1,200 200 200 200 200
10	PT KARYA PRIMA	1. Sawing machine 2. Stationary drilling machine 3. Forging machine	Material diameter 180 Bit diameter 13 pressure 150	100 200 100
11	PT (Persero) PINDAD	1. Lathes 2. Knee type Freis machine 3. Column drilling machine 4. Forging machine	Centre distance 1500 Centre height 180 Table size 2500 x 120 Bit diameter 30 Pressure 150	320 250 100 200

Source: Decree of the minister of industry No. 1/M/SK/1/1985 dated Jan. 4 1985

DELETION PROGRAM FOR MACHINE TOOLS (1)  
(LATHE)

---

Center distance: less than 1600 mm, Center height: Max 180 mm

(1985) 1/

Leg Cover: Cabinet leg, Rear leg, Front leg, Chip pan, Sheet cover,  
Aluminium cover

(1986) 1/

Reverser rod, Driver: Lead screw, Bed, Racks, Feed rod, Rear support  
Swivelling tool slide assy: Tool post slide, Tool holder  
Others: Electro motor, Lever assy

(1987)

Transmission system: Speed gear, shafts, Reverser gears  
Apron assy: Case, Saddle, Cross spindle  
Headstock assy: Case gear  
Tailstock assy: Case, Shaft, Racksgear  
Others: Cooling system, Brake system, Copying attachment, Bearing, Bolt  
& nut, Screw, Spring, Coolant pump assy, Electric/electronic com-  
ponents

(Components importable until 1987)

Chuck assy, Main spindle for headstock assy

---

Note: 1/ The schedule is divided into first and second half of the year in  
the decree.

Source: The decree of the Minister of industry No. 28/M/SK/1/1985 dated  
January 21, 1985.

DELETION PROGRAM FOR MACHINE TOOL (2)  
(KNEE TYPE PRESS MACHINE)

---

Table size: 1,200 mm x 250 mm

(1985) 1/

Column assy : Base, Cover  
Main drive : Pulley  
Feed drive : Case  
Knee : Frame  
Table : Table, Chiptray, Coolant tank  
Other : Panel box

(1986) 1/

Main spindle : Supporting arm  
Main drive : Electro motor  
Feed drive : Extendable shaft  
Knee : Guide slide  
Cross : Saddle, Guide slide

(1987)

Main spindle : Gear assy  
Main drive : Gear assy  
Feed drive : Gear assy, Work gear assy  
Others : Hydraulic component, Cooling system, Electric/electronic  
component, Bearing

(Components importable until 1987)

Spindle for main spindle, Coolant pump assy

---

Note: 1/ Same as Table A-5.2.

Source: Same as Table A-5.2

DELETION PROGRAM FOR MACHINE TOOL (3)  
(SURFACE GRINDING MACHINE/COLUMN TYPE BORING MACHINE)

---

SURFACE GRINDING MACHINES (Table size : 220 mm x 500 mm)

(1985) 1/  
Table, Leg, Sliding head, Coolant tank, Panel box

(1986) 1/  
Electro motor, Column, Bearing

(1987)  
Hydraulic component, Cooling system, Electric/electronic component

(Components importable until 1987)  
Spindle, Coolant pump assy

COLUMN TYPE BORING MACHINE

(1985) 1/  
Handle, Hand wheel, Lever, Bush, Pin, Cover, Pulley

(1986) 1/  
Base, Table, Column, Electro motor

(1987)  
Bearing, Electric/electronic component

(Components importable until 1987)  
Spindle, Coolant pump assy

---

Note: 1/ Same as Table A-5.2.

Source: Same as Table A-5.2



MACHINE TOOLS' COMPONENT THAT CAN BE IMPORTED  
(OTHER THAN LATHES, KNEE TYPE FREIS MACHINES, SURFACE GRINDING MACHINES AND COLUMN TYPE BORING MACHINE)

NO	Item	Specification	The Following Components Can Be Imported As Long As They Are Not Yet Locally Made.
1	Sawing machines	Size of objects: 180 mm	Electric component
2	Table type boring machines	Diameter of bits: 13 mm	Complete hydraulic components (Cooling pumps, Electric components, Bearings)
3	Plate folding machines	Width of plates: 2500 mm Thickness of plates: 2.5 mm	Hydraulic components Electric components
4	Pipe bending machines	Diameter of pipes: 25 mm	Hydraulic components Electric components
5	Forging machines	Work pressure: 250 ton	Complete hydraulic components, Electric components
6	Shearing machines	Width of plates: 1200 mm Thickness of plates: 2 mm	Complete hydraulic components, Bearing
7	Rolling machines	Length of plates: 2500 mm Thickness of plates: 2.5 mm	Electric components, Bearing
8	Punching machines	Pressure: 3 ton Thickness of plates: 3 mm	Electric components
9	Drill combination freis machines	Table size: 240 mm x 600 mm Diameter of bits: 32 mm	Electric components, Spindles, Bearings
10	Press brake machines	-	Electric components Hydraulic components

Source: Attachment to the decree of the Minister of industry No. 28/M/SK/1/1985 dated January 21, 1985

DELETION PROGRAM FOR AGRICULTURE MACHINERY (I)  
(HAND-OPERATED TRACTOR)

---

(Since Sept. 1, 1983)

Frame and body: Hitch attachment (O), Front frame (I), Fender (I), Belt cover and accessories (I), Connecting pipe (I), Handle frame (I), Guide-speed change (I), Steering handle (I), Handle Cover (I), Front weight (O)

Engine: Engine assy (O)

Wheel and brake system: Wheel complete (O), Tire (O), Brake assy (O)

Implement: Leveller (O), Cage wheel (O), Floating wheel (O), Iron wheel (O), Ridger (O), Harrowing wheel (O), Trial skid (O), Single flow (I)

Rotary: Rotary frame (I), Rotary cover (I), Rotary blade(I)

(Since Sept. 1, 1984)

Transmission: Pulley(O) - Shaft, main change, tension  
Lever (O) - Stand control, Main change, Steering clutch,  
Dual shift, Main clutch

Rotary: Rotary transmission assy (I)

(Since Sept. 1, 1985)

Transmission: Transmission assy (I)

---

Note: (I) = In-House  
(O) = Out-House

Source: Decree of the minister of industry No. 199/M/SK/6/1983  
dated June 9, 1983

DELETION PROGRAM FOR AGRICULTURE MACHINERY(2)  
(MINI TRACTOR)

(Since Jan. 1, 1984)

Frame & body: Seat(O), Step(I), Hitch attachment(O), Towing attachment  
(O), Support frame(I), Front weight(O), Brackets(I)

Engine: Muffler(O), Fuel line(O), Battery(O)

Wheel & brake system: Tire(O), Wheel rim(O)

Hydraulic system and power lift: Hydraulic tank(O)

Electric wiring harness: Wire harness(O)

Implement: Lever(O), Bottom plow(O), Harrowing wheel(O), Ridger(O),  
Disk plow(O), Floating strake(O)

Rotary: Rotary frame(I), Rotary cover(I), Rotary blade (I)

(Since Jan. 1, 1985)

Frame & body: Bonnet (I), Side/back cover (I), Grill (I), Fender (I)

Engine: Engine assy(O), Radiator assy(O), Air clearner (O) Fuel filter  
(O), Fuel tank (O), Hose(O)

Wheel & Brake system: Wheel rim(O), Brake cover(O), Pressure piping(O),  
Break rod(O)

Hydraulic system & power Lift: Power lift(O)\*

(Since Jan. 1, 1986)

Transmission & Rear drive axle: Transmission(I)\*, Final drive axle(I)\*,  
Final drive axle(I)\*, Power take off(I)\*  
Front axle(O)\*, Track rod(O)\*, Steering  
box(O)\*, Steering wheel(O)\*, Wheel  
hub(O)\*, Knuckle & link arm(O)\*

Wheel & Brake system: Brake shoes(O), Brake drum(O)

Hydraulic system & power lift: Piping(I), Control valve assy(I)\*, Hydraulic pump  
assy(I)\*

(Since Jan. 1, 1987)

Transmission and rear drive axle;

Machining shall be made to the following components as Out-House  
manufacturing;

-Transmission assy, Rear drive axle assy, Final drive assy, Power  
take off assy.

Note: (I) = In-House

(O) = Out-House

\* = Assembling shall be the responsibility of the factory.

Source: Same as Table A-5.6

DELETION PROGRAM FOR CONSTRUCTION EQUIPMENT(1)  
(CRAWLER BULDOZER)

---

(1984)	
Upper structure	: Counter weight(O)
Attachment	: Blade block(I)
Frame for attachment	: Draw bar (O)
Guards & Covers	: Gards(O), Bonnet & side cover(engine enc)(O), Sweeper(O)
Protective structure	: Rops/Fops(O)
Others	: Battery(O)
(1985)	
Upper structure	: Under cover & floor plate(O)
Attachment	: Ripper(fram & teeth)(O), Towing winch(O)
Frame for attachment	: C frame(I), Frunnion(O), Arm & brace(O)
Tank	: Fuel tank(O)
Guards & covers	: Fenders(O)
Protective structure	: Operators seat(O), Dash board(O)
Handle & linkage	: Handle/Lever(O), Linkage(O)
Truck shoe	: Swamp truck shoe(O)
Hydraulic system	: Hoses(O), piping(Small)(O)
Others	: Radiator & guards(O), Cable wiring(O), Fan & pulley(O), Muffler(O), Exhaust pipe(O)
(1986)	
Frame (under structure)	: Equalizer bar (O)
Upper structure	: Frame for operator seat (O)
Frame for attachment	: Stay & yoke (O)
Truck frame	: Cover (I)
Idler	: Front idler (I), Idler support & guide (I), Idler rod /shaft (I), Pins & bushing (O)
Truck adjuster	: Yoke (O), Pilot & cover (O), Shaft (O), Piston (O)
Truck roller	: Carrier roller (O), Truck roller (O), Support (O)
Hydraulic system	: Cylinders (O), Piping (large) (O)
Others	: Filter & strainer (O), Air cleaner (O)
(1987)	
Attachment	: Cutting edge, bracket & end bit for blade(O)
Truck frame	: Frame(I), Truck roller guard(I)
Truck adjuster	: Recoil spring(O)
Sprocket	: Sprocket
Truck shoe	: Truck shoe(O)
Truck link	: Truck link(O)
Others	: Control valve(O), Hydraulic tank & valve(O), Engine(O)
(1988)	
Frame(Under structure)	: Main frame(I)
Power train	: P.T.O.(O), Transmission(O), Torque flow/ converter/clutch(O), Gears(Steering/drive, final drive)(O)
Hydraulic system	: Hydraulic pump(O)

---

Note: (I) = In-House  
(O) = Out-House

The schedule is divided into first and second half of the year  
in the decree.

Source: Decree of the minister of industry NO. 138/M/SK/4/1984  
dated April 23, 1984

## PRODUCTION CAPACITY OF THREE LICENSED COMPANIES

Construction Equipment	Company	PT. Komatsu Indonesia	PT. Natra Raya	PT. Triguna Utama Machinery
Crawler bulldozer (100-320HP)		555 Unit	410 Unit	-
Hydraulic excavator (90-108HP)		75 Unit	-	350 Unit
Motor grader		90 Unit	165 Unit	-
Wheel loader (100-980HP)		75 Unit	160 Unit	-

Source: Informasi potensi Industri, periode OKTOBER 1984; MOI

DELETION PROGRAM FOR ELECTRICAL EQUIPMENT (1)  
(POWER GENERATOR UPTO 5 KVA)

---

(Since Apr. 1, 1984)

Rotor : Enamel wire (O), Armatur clampe (I), Washer (O)  
Stator : Enamel wire (O), Protection cover (I), Grommet (O), Bolt & nut (O),  
Washer (O), Lebel (O)

(Since Apr. 1, 1985)

Rotor : Shaft & shaft key (O), Fan (O), Bearing flange (O)  
Stator : Rangka/yoke (O), End bracket (O), Bearing cover (I), Brush (O),  
Rocker arm (O), Cotton/tetoron tape including for Rotor (O)

(Since Apr. 1, 1986)

Rotor : Rotor core (O), Slip ring (O), Commutator (O), Snap ring (O),  
Press board (O)  
Stator : Stator core (O), Brush holder (O)

---

Note: (I) = In-House  
(O) = Out-House

Source: Decree of the minister of industry No. 475/M/SK/9/1983

DELETION PROGRAM FOR ELECTRICAL EQUIPMENT (2)  
(ONE PHASE-CLASS 2KWH METER)

---

(Since July 1, 1984)

Rotor and registor: Rotor element, Sekrup Penguat untuk bantalan lincir atas, Sekrup penguat untuk bantalan lincir bawah, Light load adjusting plate, Peratatan penyetelan tak-tor daya

Meter box: Meter back box, Meter front box, Tutup terminal, Gesket, Jendela kaca, Sekrup dengan lobang segel, Papan nama, Diagram pengawatan, Cover fixing insert, Back plate, Riveting bracket, Retaining ring, Speed-nut/stopper-ring

Bagian block terminal: Block terminal, Terminal pengetesan, Batang hubung singkat, Terminal holder, Terminal plate, Sekrup dan washer untuk semua terminal

Lain-lain: Sekrup dan washer lainnya, Baut & mar

(Since July 1, 1985)

Rotor and registor: Sepatu maknit, Piringan rotor, Rangka elemen penggarak, Alat pen catat enersi listrik

(Since July 1, 1986)

Rotor and registor: Poros rotor, Pasak ulir (worm)

---

Source: Decree of the minister of Industry No. 140/M/SK/4/1984

DELETION PROGRAM FOR COMMERCIAL CAR

---

Category I: 3/4 - 1 ton  
II: 2 - 2 1/2 ton  
III: 3 1/2 - 5 ton  
IV: Multi-purpose case car (Jeep)  
V: Simple commercial car (KBNB)

(Since Jan. 1, 1978)

Decoration (I, II, III), Bus body (I, II, III)

(Since Jan. 1, 1979)

Oil/air filter (I, II, III), Plug (I, II, III)

(Since Jan. 1, 1980)

Tire, Paint, Battery, Shock absorber, Leaf spring, Safety glass, Radiator, Muffler, Tail pipe, Seat, Seat frame,

(Since Jan. 1, 1984)

Wheel rim, Rear body, Fuel tank, Cabin, Chassis and Frame,

(Since Apr. 1, 1984)

Rubber on body and chassis, Radiator hose, Air cleaner hose, Air filter hose, Bonnet cable, Throttle/acceleration cable, Hand throttle cable, Clutch cable, Head lining/Roof insulator, Door trim, Sun Visor, Mat floor, Label/Sticker/Name plate, Orna, Wiring harness, Mud gard, Grip assist, Brake tube (I, II, IV, V), Fuel tube (I, II, IV, V), Pull handle (I, II, IV, V), Bezel/cover door (I, II, IV, V)

(Since Jul. 1, 1984)

Brake drum, Axle/Propeller shaft (I, V)

(Since Sept. 1, 1984)

Grille of metal (I, V), Press parts (Brackets, Clips clamps, Reinforced and others) (I, II, V), Chassis parts ( -do- ) (I, II, IV), Lenses of rear combination lamps (I, V)

(Since Jan. 1, 1985)

Engine (Gasoline/Diesel), Axle/Propeller shaft (II, III, IV)

(Since Jul. 1, 1985)

Brake system

(Since Jan. 1, 1986)

Transmission, Steering system, Clutch system

---

Source: No. 307/M/SK/8/1976, No. 168/M/SK/9/1979,  
No. 38/DJ-LD/Ed/1/1980, No. 1269/DJ-LD/X1/1983  
No. 371/M/SK/9/1983, No. 1195/DJ-LD/X/1983



NEW INVESTMENT FOR SECONDARY DELETION PROGRAM  
(COMMERCIAL CAR)

Item	
Engine (Gasoline/diesel)	P.T. Toyota Engine Indonesia (Toyota)
	P.T. Colt Engine Mfg (Mitsubishi)
	P.T. Daihatsu Engine Mfg Indonesia (Daihatsu)
	P.T. Suzuki Engine Industry (Suzuki)
	P.T. Mesin Isuzu Indonesia (Isuzu)
	P.T. Hino Indonesia Mfg (Hino)
	P.T. Star Motor (Mercedes Benz)
Transmission	P.T. Wahana Eka Paramitra (Toyota Technical assist)
Axle/propeller shaft	P.T. Inti Ganda Perdana (Mitsubishi Technical assist)
	P.T. Spicer Indonesia (Spicer)
Steering system	Every Company : Arrangements in House Manufacturing
Clutch system	P.T. Darma Salana Purdana (Aishin Technical Assist)
	n.a. (Daikin Technical Assist)
Brake system	P.T. Tri Dharma Wisesa (Akebono Technical Assist)

DELETION PROGRAM FOR MOTOR CYCLE AND SCOOTER  
(BODY AND ELECTRIC COMPONENTS)

[illegible]

Source: No. 651/M/SK/11/1981  
No. 127/DJAI/SK/VIII/1982

DELETION PROGRAM FOR MOTOR CYCLE AND SCOOTER ENGINE  
( IN-HOUSE )

Components	1984	1985	1986	1987
Crank Case Cover	A	M	M+DC	M+DC
Crank Case	A	M	M+DC	M+DC
Cylinder Head	A	M	M+DC	M+DC
Cylinder Block	A	M	M+DC	M+DC
Piston	A	M	M+DC	M+DC
Piston Pin	A	A	M	M+F
Crank Shaft	A	A	M	M+F
Connecting Rod	A	A	M	M+F
Main Gears	A	A	M	M+F
Gear Shaft	A	A	M	M+F
Main Shaft	A	A	M	M+F
Counter Shaft	A	A	M	M+F
Sprocket	A	A	M	M+F
Kick Starter Complete	A	A	M	M+F
Crank Pin	A	A	M	M+F
Covers	A	M	M+DC	M+DC
Counter gears	A	A	M	M+F
Cylinder Sleeve	A	A	M	M+FC
Cam Shaft	A	A	M	M+F
Valves Assy	A	A	M	M+F
Fly Wheel	A	M	M+DC	M+DC

Note: A : Assembling  
M : Machining  
DC: Die Casting  
FC: Ferro Casting  
F : Forging

Source: No. 505/M/SK/12/1983

DELETION PROGRAM FOR MOTOR CYCLE AND SCOOTER ENGINE  
(OUT-HOUSE)

Components	1984	1985	1986	1987
Spark Plug	X	X	X	X
Drive Chain			X	X
Rubber Parts		X	X	X
Plastic Parts		X	X	X
Clutch				X
Piston Ring		X	X	X
Fuel Cock		X	X	X
Bolt & Nut (Standard)			X	X
Bolt & Nut (Hi-Tension)			X	X
Gasket			X	X
Generator Assy				X
Magneto coil				X
Lever and Switch			X	X
Cam Chain			X	X
Oil Filter		X	X	X
Cam Chain Tension			X	X
Screw, Pin, Washer		X	X	X
Contact Breaker			X	X
Spark Advancer			X	X
Oil Pump				X
Electric Starter				X

Note: X: Phase of use of components.

Source: No. 505/M/SK/12/1983

THE NEW INVESTMENT FOR SECONDARY DELETION PROGRAM  
MOTOR CYCLE AND SCOOTER

Item	
Engine (Gasoline)	P.T. Suzuki Engine Industry (Suzuki)
	P.T. Honda Astra Engine Mfg (Honda)
	P.T. Yamaha Harapan Motor Sakti (Yamaha)
	P.T. Dan Motors Vespa Indonesia (Vespa)

DELETION PROGRAM FOR ELECTRICAL EQUIPMENT (1)  
(DIESEL MOTOR, 26KW TO 375KW)

(Since Oct. 1, 1983)

Filter group: Oil filter (O), Fuel filter (O), Air filter (O), Bracket (O)

Engine mounting: Engine mounting assy (O)

Piping group: Cooling water pipe (O), Fuel pressure pipe (I),  
Lubrication pipe (I), Exhaust Pipe connection (O),  
Protective pipe (I)

Components standard: Clamp (O), V-belt (O)

Miscellaneous: Accu (O), Muffler (O), Handling slug ( )

(Since Oct. 1, 1984)

Crank case: Oil fan (O), Dip Rod (O), Oil filter plug (O)

Crank shaft: Fly wheel (I)

Piston assy: Piston ring (O), Piston (O), Piston pin (I)

Connecting rod: Connecting rod (I)

Cylinder head: Support of rocker arm (I), Rocker arm ( ),  
Push rod (I)

Intake & exhaust pipe: Intake & exhaust pipe (I)

Electric equipment/panel engine: Electric equipment/engine panel assy (O)

Pully group: Crank shaft pully (I), Centrifugal pump pully (I),  
Tension pully (I), Fan drive pully (I), Alternator pully (I)

Components standard: Gasket (O)

Miscellaneous: Tools (O), Turning device (O), Plastic parts (O)

(Since Oct. 1, 1985)

Crank case: Cylinder liner (I), Counter balance (I),

Front cover (I), Fly wheel housing (I)

Crank shaft: Counter weight (I), Cam shaft assy (I)

Cover group: Cover (I)

Cylinder head: Cylinder head (I), Cylinder head cover (I)

Indirect cooling: Indirect cooling assy (O)

Cooling system: Circulation cooling assy (O), Airduction assy (O)

Dynamo/alternator: Dynamo/alternator assy (O), Support assy (I)

Starter: Electric starter (O)

(Since Oct. 1, 1986)

Crank case: Crank case assy (I)

Crank shaft: Crank shaft (I)

Gear group: Crank shaft gear (I), Cam shaft gear (I), ring gear (I)

Centrifugal: Centrifugal pump assy (O)

Fan drive: Fan drive assy(O)

Blower: Blower assy (O)

(Since Oct. 1, 1987)

Oil gear pump: Oil gear pump complete (O)

Oil cooler: Oil cooler complete (O)

- Notes: 1. In house work (I) is only machining, whereas Blanks is from outside.
2. Blanks from foundry/forging for the forging components can still be imported as long as said blanks have not been able domestically manufactured.
3. The exchanged components which can still be imported are :  
Special Screw & Nut; Stud; Valve; Roller/Ball Bearing;  
Bushing/Bearing Bush; Speed Adjusting Control Device; Injection  
Pump Assy and Turbo Charger ; etc.
4. By not closing the possibility for the manufacturing companies to manufacture said components earliner than the stipulated schedule.
5. (I) = In-House work.  
(O) = Out-House work.

Source: Decree of the minister of industry No. 202/M/SK/6/1983 dated June 9, 1983

DELETION PROGRAM FOR INDUSTRIAL BOILER  
(MORE THAN 5 TON/H)

---

(Since July 1, 1985)

Import: Valves, Pipe fitting, Pump (Fuel, Feed water), Burner assy, End plate, Soot remover, Gage and control device, Not yet manufactured Raw materials (Steel plate, Pipe)

Local: Frame and support, Boiler drum, Tube shell/ Tube bundle, Fireproofing material, Control panel, Common component (bolt, nut, rebet, others), Fan/Blower, Electric boiler, Insulation work, Construction work/welding, Assembling, Installation)

(Since July 1, 1986)

Valves, Pipe fitting and pumps (Full & feed water) shall be transferred to local manufacturing.

(Since July 1, 1987)

End plate and Burner assy shall be transferred to local manufacturing.

---

Source: Decree of the minister of industry No. 73/M/SK/2/1985 dated February 23, 1985

JICA