

4.7 設備計画

概要

本公園予定区域は前述した様に、住宅地開発を前提とした都市設備が整備されており、その能力は、公園開発の場合、問題ない。詳細については公園内各施設規模の十分な検討を待たねばならないが、ここでは、日本側担当区域である110ha地区についての概略の方針を検討する。

雨水排水

ボゴタ市下水道局（E A A B）の基準による、公園予定区域における5年確率の降雨強度と、平均流出係数0.33（土地利用別流出係数の平均）を用い算定した結果、110ha地区における雨水流出量は約7.4 M³/secであり、既存排水網の流下能力は200 M³/secと想定されるので、十分な容量と思われる。又、公園中央に計画される湖が、40年確率の降雨にも対応できる調整能力を持っており、ボゴタ市の各所でみられる、目つまり等による排水網の流下能力の実質的低下を考慮に入れても、十分対応できる。以上のことから、排水系統は次の様な方針で計画する。

- 1) 公園道路沿の雨水は、道路沿に設けられた、Open Canalによって直接集水し、既存の下流排水管へ放流する。
- 2) 公園中央部の雨水は、園路沿の排水溝を通して湖に導かれた後、湖より既存の下流排水管へ放流される。
- 3) 湖からの放流については、既存の流域計画を変えない様、2ヶ所からそれぞれほぼ同じ量が放流できる様な越流せき構造とし、それぞれの既存下流排水管へ放流される。

給水

公園施設用生活水、施設周辺修景植栽への散水、湖の補給水の必要量を合計しても、110haにおける最大必要給水量は、約1,300 M³/日程度であり既存給水施設からの想定供給量18,000 M³/日に比較し、大きく下回っているため、供給上の問題は少ない。

給水網は、施設が分散しているので、公園内ネットワークを結ばず各々の施設は、周辺道路の既存給水管より直接取水する。

生活污水

公園周辺に布設されている既設下流管の能力が十分であるので、4系統に分け、接続する。途中経路については、分流式であるが、最終放流路においては、雨水排水と合流することになるので、公園内における一次処理が検討される必要がある。

照明

市民の利用にあたり、不安のない明るさを維持すると共に、公園の持つ機能、構成に応じて適切な照明方法の展開と、夜間特有の静かな雰囲気や美しい景観をつくることにより、夜間利用の積極化を計る。但し本公園は規模が大きく、全域の夜間利用は、問題が多くむしろモールを中心とした限定された場所を効果的に照明する。

1) 広場照明

アーバンモールの中で、特に中心となる広場については、夜間の催し物も可能にするため、約20mのハイポール照明により、50～100 Luxの照明を確保する。

2) モール街路照明

アーバンモールの街路は、意匠的に考慮された高さ6m程度HF250Wマーキュリーランプ2灯を、30m間隔で配置し、平均5～7 Luxの照度を確保する。

3) 保安灯

園内は、夜間利用を考えないが、保安上、湖の周辺を中心として、平均照度0.5 Lux以上を確保できる様、HF250Wマーキュリーランプ1灯の保安灯を、70～80m間隔で設置する。

その他、特別の催し物に対応した照明については、その使用頻度と給電能力に対する経済性を考慮し、照明設備は常設とせず、その必要な時期毎に、催し物に応じた機器を持ち込むものとし、そのための必要電源を設置する。

電力

公園内施設、及び照明を含めた電力需要は、将来需要500kwを含め、約2500kwと想定される。電力供給については、周辺250ha地区との調整及びボゴタ市全体供給計画との調整が必要であるが、基本方針としては、公園周囲にある既設配電線から各々適所において分岐、高圧受電の後、各負荷に給電するものとする。

通信

電話については、公園景観上、地下埋設によるネットワークが望ましい。

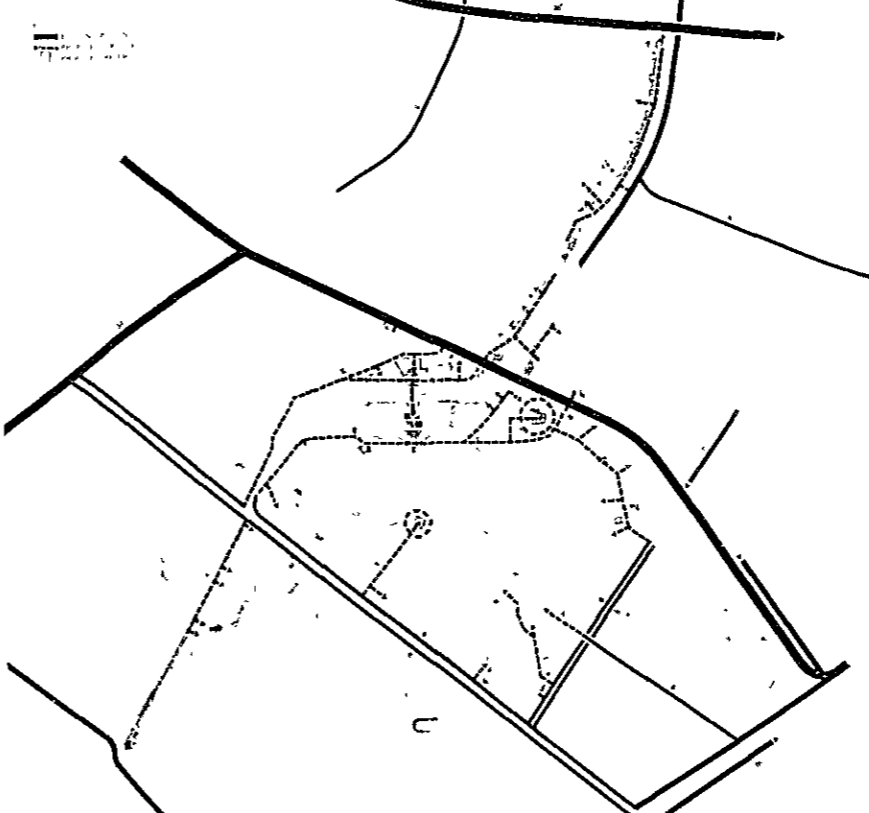
放送設備については、運営計画の詳細検討を待たねばならないが、基本的には、各ゾーン毎に、Circuitを組み、トーンゾイルスピーカーによる分散配置を考える。

Utilities Network Plan

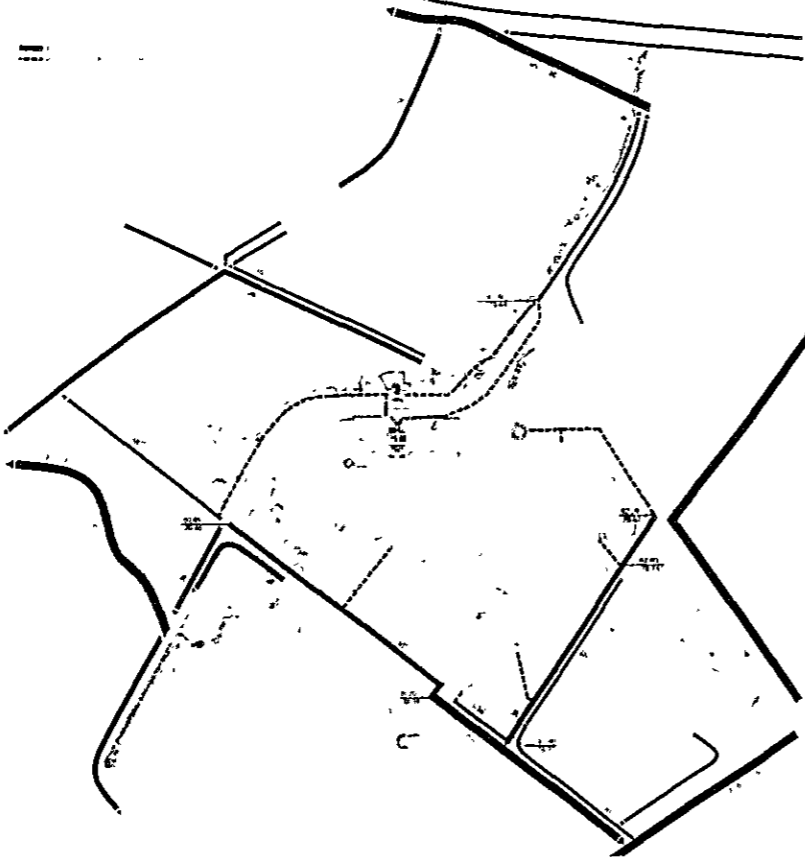
Storm Water Drainage Network Plan



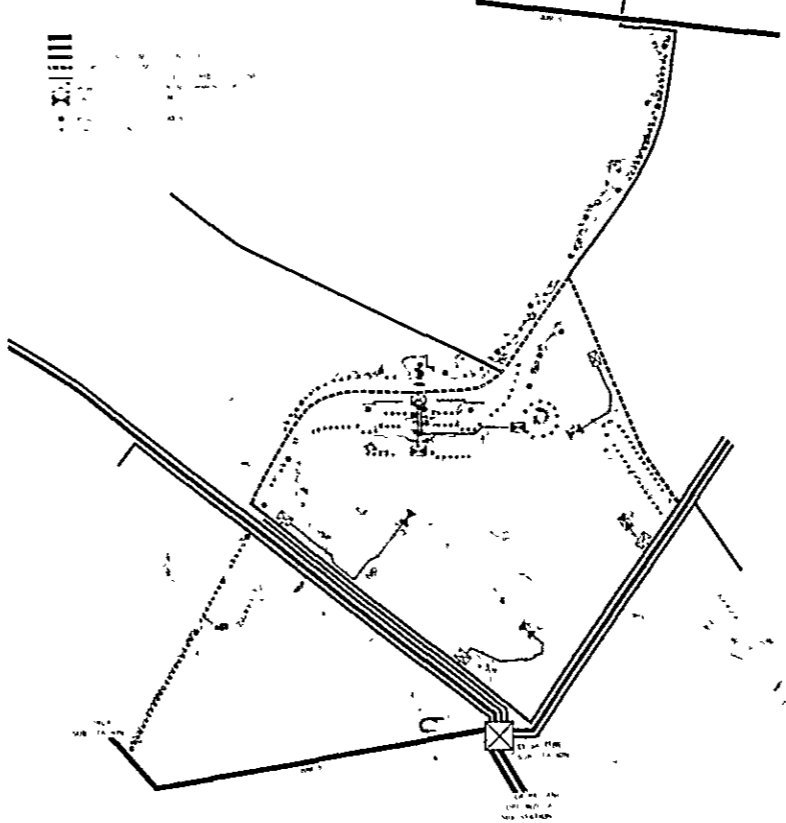
Water Supply Network Plan



Sanitary Sewer Network Plan



Electricity Supply and Lighting Plan



第V章 詳細計画

日本側担当区域である110haに置かれる主要施設について、より詳細な検討が行なわれた。

アーバンモール

公園の中心を貫くCalle 63に沿って東端より西端まで約3.4kmに渡って、記念公園のテーマを表現し、多様な文化教育娯楽活動を促進し、公園利用者を魅きつける修景施設の点在するモールを計画する。

1) 6つのテーマ

シモンボリバールの記念性に対応した6つのテーマを設定し、それぞれのテーマにより300～1,000mのリボンに分割し多様な活動の活性化を促進すると共に、修景施設計画、植栽計画の指針とする。

テーマ	リボン	内容
文化	Cultural Ribbon	伝統文化と現代文化の融合
歴史	Chronological Ribbon	独立までのコロンビアの歴史
現代	Actual Ribbon	現代の社会、経済
自由	Liberty Ribbon	独立から現代まで
未来	Youth Ribbon	未来の世代の教育、啓蒙
自然	Natural Ribbon	コロンビアの自然の認識

2) 空間構成のモジュール

歩きながら楽しむという目的に対応して、動景観分析と歩行者の行動特性に着目し、以下の様な空間構成のモジュールを設定した

- 50～80mを一体的な空間を構成する最小単位とし、各単位毎に小プラザを設けサービス施設を配置する。
- 200～300m毎に、活動の集積点となるテーマプラザを置く。それぞれのプラザは、独立した雰

囲気を持つことができ、Landscapingの変換点ともなる。

- 500～1,000mを1つのテーマを持ったリボンの最大距離とする。

3) 修景方針

モール内は、110ha地区に計画される壮大な自然景観に対し、人為的に計画された象徴性の高い修景景観を基調とし、以下の修景要素を導入する。

- 水路→幾何学的パターンによる水路網を基調とし、各所に配置される噴水、滝等を照明と組み合わせることによって、夜間においても利用者に方向性を与える目標物又はガイドとして機能させる。
- 舗装→コロンビアの持つ伝統的なグラフィックパターンを基調にし、カラー舗装や芝生、花壇との混合によって多様な舗装パターンを創る。
- 植栽→モール内植栽は、軸線の強調やアイストリミングや、構造物と組み合わせた立体的配植により、特色のある景観を創る。
- 彫刻→各リボンのテーマにちなんだ彫刻、レリーフ等を積極的に導入する。
- 照明→夜間における利用を促進し、様々な催し物の場を演出するため、各広場には50～100Luxの照度を保証する照明器具が設置される。

4) 催し物広場

モール内のプラザは各リボンのテーマに沿って個々の名前を持ち、それにちなんだ催し物を企画する等市民の活発な利用を促進する。

国民祭典広場

シモンボリバール公園の中心に置かれるこの国民祭典広場は、公園の中心施設となるばかりでなく、コロンビア全国民全てにとっての一体感の象徴となるものである。

1) 活動

本広場は以下の様な大規模な活動に利用される。

- 国家的及び国際的な行事
独立記念式典、大統領就任式典、シモンボリバール生誕記念祭、ラテンアメリカ諸国会議閉会式、その他各種記念日に対応したパレード等
- スポンサー関連行事
青年体育大会パレード、自転車競技発着点等
- 文化行事
各種コンテスト、博覧会、カーニバル、コンサート、展覧会等
- その他 政治集会

2) 規模

現在、ボゴタ市における大規模な集会に対応した施設とその容量としては、ボリバール広場(1ha, 3万人)、闘牛場(1ha, 3万人)、国立競技場(1ha, 5万人)等がある。それ等の施設の利用状況及び可視距離の限界という制約条件と、コロンビア最大の広場としての意義を考慮し、適正利用人口3～4万人最大時5～6万人に対応した規模を想定する

3) 空間構成

多様な規模と内容を持つ、利用活動を満足し得る様、以下の様な空間構成の基本方針を設定した。

- 方位

Calle 63に平行して南北に長軸をとる。これ

は朝夕の太陽の影響を最小限にすると共に、道路を通ってくるパレードを無理なく導入する。

● 軸線とアイストップ

長軸上の南側に、造成と一体となった歴史博物館を置くと共に、北側にもCalle63をはさんでモニュメントを置き、アイストップとする。長軸に直交させ、東西の軸を設定し、この軸上にVIP用の観覧席、ステージを置く。この軸をさらにのぼしCalle63を越えた小プラザとつなぐことにより、道路によって分断された公園エリアをつなぎ、利用者の流動を促す。

● 多角的活動の核

大群集に対応した大規模な空間の保持と、平常時におけるヒューマンスケールの必要性を適合させるため、南北、東西の軸上に3つの性格の異なった広場を設けそれぞれ独立した利用を可能にする。

● 観客席

利用活動の内容、性格に応じて使い分けができる様、中央の広場をはさんで東西軸の両側にステージとなる場を設ける。観客席は広場西側の斜面状の芝生が、大群集の利用に柔軟に対応する。

4) サービス施設

Ceremonyの開催時は、短時間に大量の利用者が集中するので設備計画については、集中率を高くとり、処理能力を越えないよう、十分な配慮が必要であるが、上物については、経済性を考慮し仮設施設によって対処する。

コロンビア歴史博物館

1) 目的

シモンボリバルが活躍した大コロンビア建国時代を中心に、それ以前と現代までのコロンビアがたどってきた道を、わかりやすい様々な展示手法を用い、国民一般への教育、啓蒙を計る。

2) 設計方針

国民祭典広場の軸線上に配置されるので、アイストップとして、モニュメンタルな造形が求められるが公園景観との調和から、建築が表に現れない様ハルコニーに植栽を配すると共に、全体的な形態は円すい形とし周辺造成と一体になったものとする。

博物館内は、3層ないし4層とし、それぞれ時代区別に応じた展示を行なう。屋上は、公園内で最も高い場所となるため、展望台として解放する。

3) 面積表

敷地面積	10.000 M ²
建築面積	2.000 M ²
建築床面積	3.000 M ²
所要室	
展示スペース	1.000 M ²
倉庫	500 M ²
研究室	200 M ²
事務室	250 M ²
廊下・ホール	830 M ²
機械室	120 M ²
工作業室	100 M ²

宗教美術館

1) 目的

1969年の国際カトリック会議開催の折、ローマ法皇の訪問を記念して建造された教会(Templete)を、本公園建設を機会に、日常的な利用を促進すると共に、公園利用の目的に調和する様、宗教美術館を増設することにより、周辺整備を行なう。

2) 設計方針

象徴的意味を持つ教会堂を、公園景観と調和させながら、その建築形態をきわたらせる様、美術館は半地下とし、円形の教会をとりまく様に設置する。美術館内部はコントロールされた自然光と人工光源の組み合わせによって宗教的雰囲気高めらる。

3) 面積表

敷地面積	10.000 M ²
建築面積	1.500 M ²
建築床面積	1.500 M ²
所要室	
展示スペース	750 M ²
倉庫	150 M ²
研究室	100 M ²
事務室	100 M ²
廊下・ホール	250 M ²
機械室	75 M ²
作業室	50 M ²

Citizen Plaza: Plaza de la comunidad

To provide a place for communication by and with youth, workers, women and those who make up society and to contribute to improvement of the life of the people of the city. The Citizen Plaza is intended for flexible use for a broad range of activities. In addition to providing a place for the citizens to freely meet, it will be necessary to plan and carry out a program of activities to insure that the plaza is fully used for the benefit of the people.

- Service facility: Drinking fountain
- Lighting: Plaza 100 lux
- Others: Benches, dust boxes, pergola
- Event program: Youth Month events, Blood Donation Campaign, Women's Month events, Used goods exchange, May Day gathering, Little Handness Movement Month, Handicapped Persons Month, Beauty Pageant Movement, Citizens' Charity Balls, Traffic Safety Month, Community Chest campaign events, Christmas celebrations

Industries Plaza: Plaza de las Industrias

For publicizing and promoting Colombia's industries through various events to facilitate communication among industrialists and businessmen and to stimulate a competitive spirit on behalf of further development and growth through constant provision is made for a flexible-use plaza.

To obtain the maximum benefit from use of the space, it will be necessary to solicit and obtain the cooperation of various organizations in connection with planning and implementation of a program for the plaza.

- Service facility: Circulation bus stop, drinking fountains, fresh water supply
- Lighting and others: Plaza 100 lux, Benches, dust boxes, pergola
- Event program: Coffee Festival (tasting sale), Pottery market, Leather products trade show, Dairy products trade show, Fruit market, Glass products show, Apparel contest, Emerald Queen contest

Public Administration Plaza: Plaza de la Municipalidad

To provide a place for the government of Bogotá to come in close contact with the citizens, so as to guarantee their better understanding of the laws and activities of the government, and to facilitate the citizens' participation in the civil administration processes, a plaza is to be provided.

Permanent information board is to be provided so that citizens may thereby become more familiar with the government's welfare, education, cultural, social, urban improvement and other programs.

- Lighting: Plaza 100 lux
- Others: Information display boards, benches, dust boxes, pergola
- Event program: Bogota Founding Day ceremonies, Teachers' Information Day, Weights and Measures Day, Social Welfare Day, Postal Service Day (combined with release of stamp or stamp), Food Improvement and Food Safety Day, Water Day

Technology Plaza: Plaza de la Tecnología

As the entrance to the Transport Museum and Scientific Technology Museum and as a Festival Plaza to be used, in conjunction with these museums, activities in the plaza will include the technology of the future, in such a manner as to arouse the interest in young Colombians.

- Symbol: Future Technology Monument
- Service facilities: Drinking fountains, toilets, telephones, kiosks, museum entrance, circulation bus stop
- Lighting: Symbol and plaza 50 lux
- Others: Benches, dust boxes
- Event program: Investor Contest (for Neoliberal Patent Day), Raincoat Day (introducing new raincoat designs, introducing a new locomotive, etc.), Aerospace Day (airplane exhibition), Space Technology Exhibition, Research Development Technology Exhibition, Pioneers Day, Weather Monitoring Exhibition

ABC Park: Camino de Abecedario

In addition planting flowers and trees so as to spell out the alphabet from A to Z in the area of the Main Fountain and side of the statue and in the corners of square and various primary objects are to be set out so that while strolling mothers can teach the names of them, and their spellings to the children in a playful atmosphere.

- A pleasant looking brook is to be provided with cascades so that children can learn water safety by blowing leaf boats there
- Symbol: Alphabet monument, number monument
- Lighting: Symbol elsewhere, 25 lux
- Others: Main Fountain (with color pavement), Sub Fountain, garden (with flowers, trees, sculptures), splash-way, lucky pool (for leaf boats), Alphabet Tree Plaza, Numbers Tiny Plaza
- Events: Boat races, Sailing boat quizzes

Mothers and Child Plaza: Plaza de la Madre y el Niño

As a place to commemorate the birth and growth of children, a place is provided for mother and child to learn various things through play and other activities.

It is desirable that a program be developed and implemented so that the plaza can help mothers to raise their children.

- Symbol: Mother and child monument
- Service facilities: Kiosks, drinking fountains, toilets, telephone booths
- Lighting: Symbol and plaza 100 lux
- Others: Plaza: Commemorating Birth Plum Garden, Flower Plaza, Fishpond, Animal Plaza, Insect Tree, Benches, Canopies, Dust Boxes
- Event program: Toy Hospital Day, Colchich Festival, Toys of the world exhibit, Insect garden, Play Day, Ice Cream Day, Mothers' hand made Puppet Day, Charity Events, Annives of Colombia Festival, Puppet shows, Insect Festival, Tree climbing contest

Youth Joy Plaza: Plaza de la Juventud

The plaza is to be a place for lovers, workers, and for youth to gather, there is to be a garden with flowers all year round and a large fountain in the center. Stepped terraces on the sides will be identified with the names of poets from all the world and all ages so that people may use these names to identify places to meet. The plaza is also to serve as an entrance to various activity from a north-easterly direction on foot.

- Main facility: Fountain garden
- Symbol: Lovers monument (trials of Maria Teresa)
- Service facilities: Kiosks, toilets, drinking fountains
- Lighting: Symbol fountain plaza 50 lux
- Others: Fountain terrace, pergolas, dust boxes

Path of Thought: Sendero de los Filósofos

Together with plantings on both sides of the Main Fountain, natural-sounding brook and paths will be arranged in a manner conducive to thinking. Alcoves with benches will be provided for relaxation.

- Main facility: Athletic equipment made of wood, rope and netting, miniature football courts
- Symbol: Sports monument, health monument
- Service facilities: Drinking fountains
- Lighting: Symbol and mini football 100 lux, road 20 lux
- Others: Main Pedestrian (with colored pavement and traditional graphic pattern), lawn and around athletic equipment, small plaza, benches, dust boxes
- Events: Physical skills contest, Athletic equipment race, Children's tree climbing race

Athletic Plaza: Camino de los Atletas

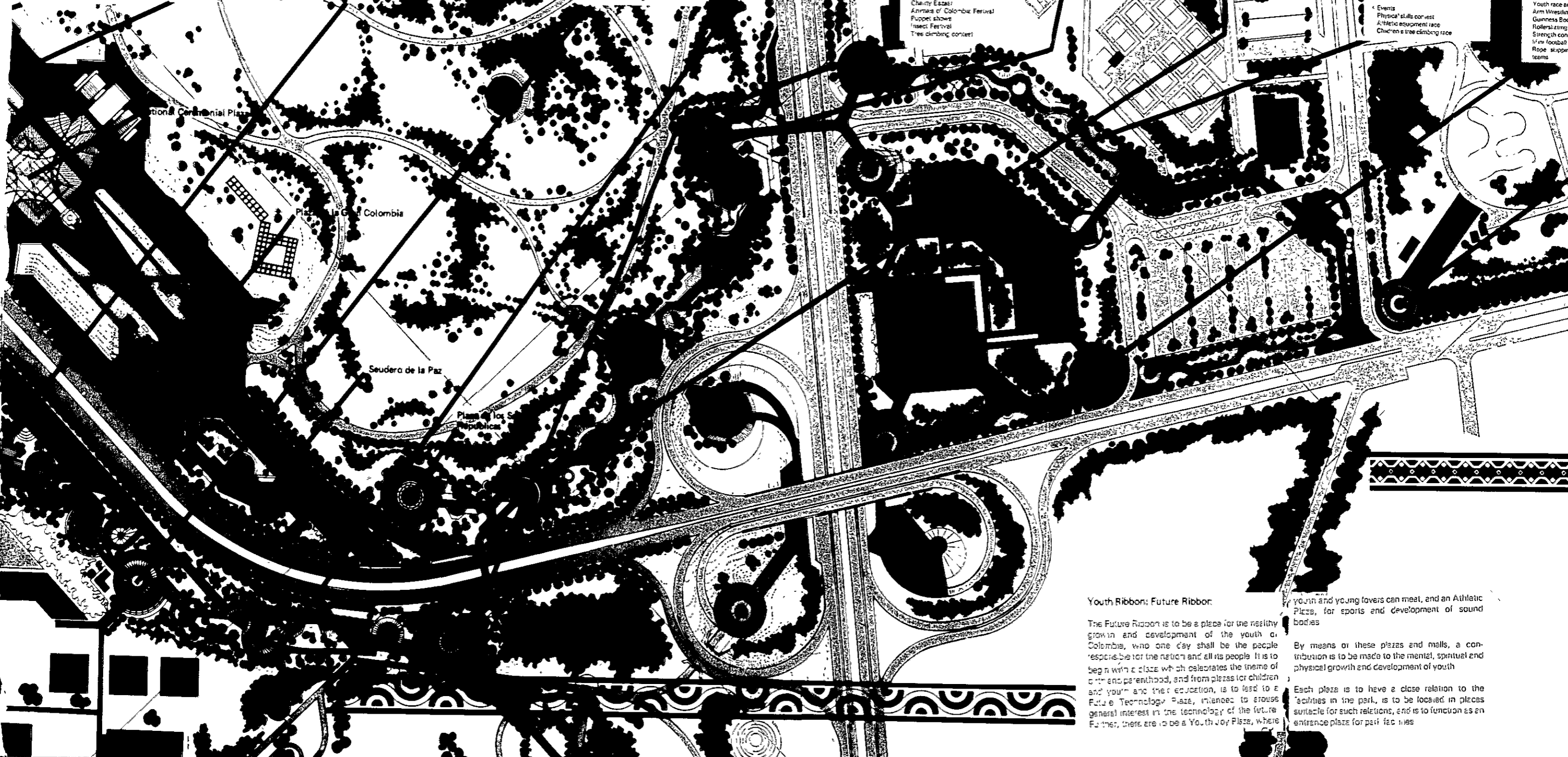
Along the distance of about 400m from the gymnasium to the Jardín Botánico, wooden athletic play equipment, football area, etc. will be located in such a manner that anyone can use them for play and exercise. Further, small plazas are to be arranged at the intersection of Av. 63 and Av. 62 at the gymnasium entrance and at the Youth Ribbon end in front of the Jardín Botánico, where there will be places to rest and chat.

- Symbol: Sports monument, health monument
- Service facilities: Drinking fountains
- Lighting: Symbol and mini football 100 lux, road 20 lux
- Others: Main Pedestrian (with colored pavement and traditional graphic pattern), lawn and around athletic equipment, small plaza, benches, dust boxes
- Events: Physical skills contest, Athletic equipment race, Children's tree climbing race

Athletic Plaza: Deportes

As the entrance to and as the Main Path, the Athletic multipurpose sports activities.

- These activities are part of a program by youth and ordinarily accomplish the purpose intended: promotion of recreation
- Symbol: Sports monument
- Service facilities: Kiosks, drinking telephone booths
- Lighting: Symbol and plaza
- Others: Large plaza with pavement with calligraphic signatures of heroes, benches
- Event program: Bogota Citizens' Day, Bogota Bicycle Race, Youth race around Arm Wrestling champion, Guinness Book record, Roller skating race, Strength contests, Lawn football class, Rope skipping contests



Youth Ribbon: Future Ribbon

The Future Ribbon is to be a place for the healthy growth and development of the youth of Colombia, who one day shall be the people responsible for the nation and all its people. It is to begin with a plaza which celebrates the theme of birth and parenthood, and from plazas for children and youth and the education, is to lead to a Future Technology Plaza, intended to arouse general interest in the technology of the future. Further, there are to be a Youth Joy Plaza, where

young and young lovers can meet, and an Athletic Plaza, for sports and development of sound bodies.

By means of these plazas and malls, a contribution is to be made to the mental, spiritual and physical growth and development of youth.

Each plaza is to have a close relation to the activities in the park, is to be located in places suitable for such relations, and is to function as an entrance plaza for particular uses.

Technology Plaza Plaza de la Tecnología

As the entrance to the Transport Museum and Scientific Technology Museum and as a Festival Plaza to be used in connection with these museums activities this plaza will introduce the technology of the future in such a manner as to arouse the interest of young Colombians

- Symbol
Future Technology Monument
- Service facilities
Drinking fountains toilets telephone booths museum entrances circulation bus stop
- Lighting
Symbol and plaza 50 lux
- Others
Benches dust boxes
- Event program
Invention Contest (on National Patent Day)
Railroad Day (introducing new railroad systems exhibiting steam locomotives etc.)
Aeronautics Day (airplane exhibition)
Space Technology Exhibition
Resources Development Technology Exhibition
Petrochemistry Exhibition
Weather Monitoring Exhibition

ABC Path Camino de Abecedario

In addition planting flowers and trees so as to spell out the alphabet from A to Z in the area of the Main Pedestrian and side paths statues etc. in the forms of animals and various ordinary objects are to be set out so that while strolling mothers can teach the names of them and their spellings to the children in a playful atmosphere

- A pleasant looking brook is to be provided with channels so that children can learn water safety by floating leaf boats there
- Symbol
Alphabet monument numbers monument
- Lighting
Symbol elsewhere 20 lux
- Others
Main Pedestrian (with color pavement)
Sub Pedestrian gardens (with flowers trees sculpture) splash-away kiddie pool (for leaf boats), Alphabet Tiny Plaza Numbers Tiny Plaza
- Events
Boat races
Spelling bees quizzes

Mothers and Child Plaza Plaza de la Madre y el Niño

As a place to commemorate birth and growth of children a plaza is provided for mother and children to learn various things through play and other activities

It is desirable that a program be developed and implemented so that the plaza can help mothers to raise their children

- Symbol
Mother and child monument
- Service facilities
Kiosks drinking fountains toilets telephone booths
- Lighting
Symbol and plaza 100 lux
- Others
Plaza Commemorating Birth, Plum Garden Puppet Plaza Fishpond Animal Plaza Insect Tree Benches Canopies Dust Boxes
- Event program
Toy Hospital Day
Goldfish Festival
Toys of the world exhibit
Kindergarten Play Day
Ice Cream Day
Mothers Handmade Puppet Day
Charity Bazaar
Animals of Colombia Festival
Puppet shows
Insect Festival
Tree climbing contest

Youth Joy Plaza Plaza de la Juventud

This plaza is to be a place for lovers rendezvous and for youth to gather there is to be a garden with flowers all year round, and a large fountain in the center Stepped terraces on the sides will be identified with the names of poets from all the world and all ages, so that people may use those names to identify places to meet The plaza is also to serve as an entrance to visitors arriving from a northeasterly direction on foot

- Main facility
Fountain garden
- Symbol
Lovers monument (statue of Maria Teresa)
- Service facilities
Kiosks, toilets, drinking fountains
- Lighting
Symbol fountain plaza 50 lux
- Others
Poets Terrace pergolas, dust boxes

Path of Thought Sendero de los Filósofos

Together with plantings on both sides of the Main Pedestrian, natural appearing brook and paths will be arranged in a manner conducive to thinking Alcoves with benches will be a provided for relaxation

- Main facility
Athletic equipment made of wood rope and netting miniature football courts
- Symbol
Sports monument health monument
- Service facilities
Drinking fountains
- Lighting
Symbol and mini football 100 lux road 20 lux
- Others
Main Pedestrian (with colored pavement and traditional graphic pattern), lawn area (ground athletic equipment), small plaza, benches dust boxes
- Events
Physical skills contest
Athletic equipment race
Children's tree climbing race

Athletic Road: Camino de los Atletas

Along the distance of about 400m from the gymnasium to the Jardín Botánico wooden athletic play equipment football area etc. will be located in such a manner that anyone can use them for play and exercise Further small plazas are to be arranged at the intersection of Av. 63 and Av. 68, at the gymnasium entrance and at the Youth Ribbon end in front of the Jardín Botánico where there will be places to rest and chat

- Main facility
Athletic equipment made of wood rope and netting miniature football courts
- Symbol
Sports monument health monument
- Service facilities
Drinking fountains
- Lighting
Symbol and mini football 100 lux road 20 lux
- Others
Main Pedestrian (with colored pavement and traditional graphic pattern), lawn area (ground athletic equipment), small plaza, benches dust boxes
- Events
Physical skills contest
Athletic equipment race
Children's tree climbing race

Athletic Plaza Plaza de los Deportes

As the entrance to the Sports Complex, and as the Main Plaza of the Athletic Road the Athletic Plaza will be a multipurpose space for various athletic activities

These activities should include many as part of a program in which participation by youth and ordinary citizens may be easily accomplished and the plaza is therefore intended to contribute to the promotion of recreation through sports

- Symbol
Sports monument
- Service facilities
Kiosks drinking fountains toilets telephone booths circulation bus stop
- Lighting
Symbol and plaza 100 lux
- Others
Large plaza with a hard surface (block pavement with cast blocks in which are signatures of the nation's sports heroes) benches pergolas dust boxes
- Event program
Bogotá Citizens Marathon
Bogotá Bicycle Race
Youth race around the park
Arm Wrestling championship meet
Guinness Book record attempts
Roller skating race
Strength contests (lug of war etc.)
Mini-football classes for children
Rope skipping contest by father-son teams

Flowering Plaza Plaza de los Flores

Besides being the Main Entrance Plaza for the Jardín Botánico the Flowering Plaza will be a beautiful place symbolizing Colombia which exports large quantities of cut flowers to many countries It will also be a focal point for a campaign to beautify Bogotá with flowering plants Events here will utilize the Natural Ribbon and be large in scale

- Symbol
Spirit of the flowers monument
- Service facilities
Toilets telephone booths drinking fountains
- Lighting
Gardens 10 lux
- Others
Benches dust boxes
- Event program
Ornamental plant contest
Potted plant sale
Beauty Bogotá movement activities (e.g. free distribution of seeds)
Rose contest
Carnation show
Chrysanthemum show
Plant doctor clinic
Lectures on plants and flowers

Giant Tree Plaza Plaza de los Arbores

As a subsidiary entrance to the Jardín Botánico and as an entrance plaza for Alameda and Simon Bolivar Great Memorial Park a plaza made in such a manner as to heighten the sense of arrival is needed From this viewpoint as well as its being the plaza of the Natural Ribbon a symbolic giant tree is to characterize this plaza

- Symbol
Giant tree
- Service facilities
Toilets telephone booths
- Lighting
Giant tree plaza 10 lux
- Others
Benches dust boxes
- Event program
Flower and plant sale
Plant Bogotá publicity (seedlings distribution)
Plant doctor clinic
Horticulture instruction
Decoration of the Christmas tree (Giant Tree)
Sale of Christmas trees
Christmas carols

Natural Ribbon (Prologue of urban Ribbon)

The Natural Ribbon like the Cultural Ribbon is intended to serve as a gateway with a sense of arrival for approach to the Urban Ribbon and Simon Bolivar Great Memorial Park It is important to provide symbolic scenery in this area

At the same time the Ribbon will have a flower and green plaza introducing a rich quality of Colombia and Andes plants and flowers

Its plazas will identify an approach to park facility and give various rich streetscapes

Youth Ribbon: Future Ribbon

The Future Ribbon is to be a place for the healthy growth and development of the youth of Colombia, who one day shall be the people responsible for the nation and all its people It is to begin with a plaza which celebrates the theme of birth and parenthood, and from plazas for children and youth and their education, is to lead to a Future Technology Plaza, intended to arouse general interest in the technology of the future Further, there are to be a Youth Joy Plaza, where

youth and young lovers can meet, and an Athletic Plaza, for sports and development of sound bodies

By means of these plazas and malls, a contribution is to be made to the mental, spiritual and physical growth and development of youth

Each plaza is to have a close relation to the facilities in the park, is to be located in places suitable for such relations, and is to function as an entrance plaza for park facilities

alameda



Cultural Ribbon Paseo de la Cultura

Among the highly symbolic urban ribbons this urban ribbon is to be particularly symbolic, with enhancement of the sense of arrival at the memorial park and the entrance of the Alameda. Furthermore, this ribbon is near the commercial axis, and in order to activate it as the area with the highest sound the clock character, it will be necessary to have programming of cultural artistic and other outdoor performances, including high time performances. Through such activities and performances, it will be possible to protect traditional culture and encourage artistic activities.

Further, it will be possible to activate the areas along the sub-pedestrians as outdoor galleries where painting, sculpturing and other creative and recreational activities can take place.

In addition to stimulating and encouraging activities of the citizens in these cultural and artistic pursuits, it will be important for this Paseo to be used for the staging of events in the plazas for the pleasure of the people.

Memorial Plaza. Plaza de la Conmemoración

In order to enhance the sensation of having arrived at the Simon Bolivar Great Memorial Park a wall about 20m wide and 10m tall is to be constructed on both sides at the intersection of Avenida Ciudad de Quito and Avenida 63. It is to be embellished with a large relief by a Colombian sculptor and is to have the figure of a Grand Memorial Wall. On the east side of the east face of the wall, a ge cascade is to be provided and it is to be the point of origin of the canal which is to pass through the Cinta Urnos. Canals may be more realistic, in visual terms, for it to be composed of ten or four water circuits.

Serenade Plaza. Plaza de Serenatas

In addition to using this plaza, which is to be composed of a main stage and a stepped terrace as a venue for folk songs, serenades and other musical activities by and for the people of the city, it is to be used to prevent performances of folksongs from all regions of the country and thereby to contribute to their preservation as well as broader appreciation.

All times such as weekends, permission will be granted for outdoor stalls to be set up for the further enjoyment of the people.

Further to the east of the cascade an amphitheatre is to be provided for use on such occasions as New Year's ceremonies or presentations of plays, operas and other performances, as well as a place for people to meet, relax and talk while being able to enjoy a view of the cascade and Canal Ribbon.

- facilities: theatre, cascade
- facilities: walls
- facilities: drinking fountains, toilets, station office (with lighting and control room), telephone booths, information display board
- lighting: to be provided for the relief and terrace about 200 lux to be provided
- facilities: pergolas

- Main facilities: Main stage (at water's edge), stepped terrace
- Symbol facilities: Monument to music
- Service facilities: Kiosks, toilets, circulation bus stop, drinking fountains, telephone booths, information display board, entrance to Parque El Lago

Gallery Ribbon-1. Caminodelas Bellas Artes

In addition to creating a symbolic space about 300m long and 50m wide as the entrance area, five sequential view are to be formed through the composition of the canal, these small plazas, pond and flowers, shrubbery etc. On both sides of the Main Pedestrian, along small Pedestrians spaces may be used outdoor galleries for display of paintings, sculpture, photographs and the like, in addition to which the ribbon will be activated by regular fairs having cultural themes (see below).

- Main facilities: Poetry Plaza, Painting Plaza, Photography Plaza
- Symbol facilities: Poetry monument, painting monument, photography monument
- Lighting: Small plaza 20 lux, elsewhere 10 lux

- Others: Benches and dust boxes at the pond and small plaza, Canal Color paved Main Pedestrian (Traditional Pattern) Sub-Pedestrians

- Event program: Amateur photographers, painters, sculptors, illustrators exhibitions, Poetry reading nights, Postcard concourse, Book fair, Poster show, Flower poem concourse, Paper cutout concourse, Love poem concourse, poet of the month concourse, Stamp fair, Poetry concourse, book fair

Gallery Ribbon-2. Camino de las Esculturas

Seven distinctive landscapes are to be created in the 350m long 40m wide area from the Serenade Plaza to the Dancing Plaza. The ribbon will be landscaped so as to be usable for permanent sculpture exhibitions and for concerts. In particular, this ribbon is to provide a place for the display and promotion of the prosperity of modern sculpture.

- Main facilities: Permanent sculpture exhibition
- Lighting: Small plazas 20 lux, other areas 10 lux

- Others: Benches, dust boxes, canal and small ponds, color paved Main Pedestrian (Traditional Pattern) Sub-Pedestrians

- Event Program: College graduates show, Bogota Citizens Sculpture Exhibition, Contemporary Sculpture exhibition, New Sculptors Show, Schoolchildren's Sculpture Exhibition, Grand Colombia Sculpture Exhibition (Andes Sculpture Show), Abstract Art Show

Dancing Plaza. Plaza de la Danza

In addition to providing a place for communication and enjoyment by the citizens of Bogota through folk dances, social dancing and other related activities, this plaza will contribute to the preservation of traditional dances of the nation by providing a place where they may be performed for the benefit of large audiences.

For these activities to take place, it will be necessary to enlist the cooperation of professional and amateur groups and various individuals so that reviews, newly created dance compositions etc. may be presented in addition to weekends and other occasions, programs should be held whereby visitors may dance and participate in contests.

- Main facilities: Dancing stage, dancing terrace, ponds

- Symbol facilities: Monument to dance
- Service facilities: Administration facilities, toilets, telephone booths, circulation bus stop, information display board
- Lighting: 100 lux at dance areas
- Others: Pergolas, benches, dust boxes
- Event program: Dance Day, Dancing teams presentation, Distinct dance contest, Bogota Citizens Dance Contest, Famous dancer performance, Traditional Dance Preservation Programs, Bogota Citizens Costume Ball, Children's folk dance lessons, Inter-collegiate dance concourse

Chronological Ribbon

The Chronological Ribbon is a large mall, about 800m long from the Latin America Anthropology Museum to the Agua Plaza.

This ribbon will display the culture and civilization of Latin America and Colombia, featuring a historical panorama of Colombia's colonial period, war for liberation, liberation and establishment of Gran Colombia, showing to visitors the cultural achievement of antiquity, the meaning of liberation and independence and the flow of history.

- Symbol facilities: Monument to dance
- Service facilities: Administration facilities, toilets, telephone booths, circulation bus stop, information display board
- Lighting: 100 lux at dance areas
- Others: Pergolas, benches, dust boxes
- Event program: Dance Day, Dancing teams presentation, Distinct dance contest, Bogota Citizens Dance Contest, Famous dancer performance, Traditional Dance Preservation Programs, Bogota Citizens Costume Ball, Children's folk dance lessons, Inter-collegiate dance concourse

The colored pavement of the Main Pedestrian will incorporate a chronological table of the nation's history, and in large small plazas in the areas to either side of the Main Pedestrian, displays of symbolic and historical objects, artifacts etc. will be combined with landscaping in a sequence of historical cavalcade.

Ancient ceremonies will be presented in revival, memorial ceremonies in honor of historical events, and special programs for schoolchildren could be among the attractions.

Ancient Plaza: Plaza de los Aborígenes

A plaza is to be provided symbolizing Colombia's antiquity, and serving as both the Entrance Plaza for the Latin American Anthropology Museum and the first plaza of the Chronological Ribbon.

In the center of the plaza, a replica of the Grand Written Stone, a symbol of ancient Colombia, is to be set up. In the parts of the plaza surrounding it, ceremonies of the Chibuch, Caribe and other tribes will be performed, and Bachue and other legends plays will be presented for children. The plaza thus will be a center for a variety of events.

- Symbol: Grand Written Stone, pond
- Service facilities: Drinking fountains, toilets, telephone booths, information display board
- Lighting: 50 lux
- Others: Pergola, benches, dust boxes
- Event program: Revival of ceremonies of Familia Chibcha, Revival of ceremonies of Familia Caribe, Revival of ceremonies of Familia Arawac, Revival of ceremonies of Familia Agutiniana, Children's plays from the Bachue legends, Children's plays from the Bachue legends, Reconstructed archaeological sites

Ancient Picture Scroll: Sendero de la Cultura Prehispanica

This scroll, about 300m long and 30-50m wide, is to feature six distinctive spaces created by landscaping on both sides of the Main Pedestrians.

Urban patterns symbolizing of Andean civilization, the six epochs and huge stone structures and other symbols and miniatures are to be used.

Further, the Main Pedestrian in addition to having colored pavement featuring traditional Caribe graphics patterns, will have colored representation of the nation's chronology featuring events from each period of history.

- Symbol: Big stone forms, statues
- Lighting: Symbol facilities and garden 20 lux, other areas, 10 lux
- Others: Antiocha garden, Maya garden, Mosca garden, Inca garden, canal and small ponds, color paved Main Pedestrian (Traditional pattern), benches, dust boxes, information display boards
- Event program: Inca Brothers Festival (Azteca Day, Maya Day, Motica Day, Inca Day)

Spanish Plaza. Plaza de la Hispanidad

A Spanish Garden is to be made, it will have in it the Columbus Plaza, Mestizaje Plaza and a Spanish Village. It is thought that this will be where events such as those commemorating the discovery of the New World by Columbus to the age of colonization and those related to social phenomena are staged.

- Main facilities: Spanish Building including cafe, kiosk, toilets, telephone booths, rest house
- Symbol: Mestizaje monument, Statue of Cnollo
- Service facilities: Drinking fountain, circulation bus stop

- Others: Columbus Plaza, Mestizaje Plaza, Spanish Village, Cnollo Plaza, pergola, benches, dust boxes, information boards
- Lighting: Symbols and plaza 50 lux
- Event program: Columbus Day gathering, Colonial era plays, Spanish dances, Mestizaje festival, Cnollo festival

Independence Picture Scroll Sendero de la Independencia

This scroll extends a distance of about 300m from the Spanish Plaza to the Gran Colombia Plaza and is about 40m wide.

Here a panorama is unfurled depicting the period from colonization to liberation and unification as Gran Colombia.

In addition to recording major events of history, the Main Pedestrian will have to either side statues of heroes and heroines of the struggle for independence.

Further, in addition to having plazas to commemorate the victories at Cartagena and Boyaca, there will be a large plaza to forever honor all of the unknown patriots who gave their lives for their country, thus making this a picture scroll of Colombia's independence.

- Symbol: Patriots Monument, Unknown Freedom Fighters Monuments
- Service facilities: Kiosk, toilets, telephone booths
- Lighting: Plaza and small plaza 20 lux, symbols and other areas 10 lux
- Others: Pergolas, benches, dust boxes, Main Pedestrian (with historical chronology and traditional pavement pattern), Sub-Pedestrians
- Event program: Children's Parade of War Heroes, Cartagena Independence Festival, Boyaca Victory Festival, Nuevo Gurenada Festival

Republic Plaza. Plaza de las Republicas

As the end of the Chronological Ribbon, a monument is to be of an expanse of law pattern emanating from the plazas of the Andean country's plaza, relaxed provided and the name of each nation shall be central part, subordi form of grass areas in various events, such celebrations, which deepening ties among nations and for other.

A monument is to be of an expanse of law pattern emanating from the plazas of the Andean country's plaza, relaxed provided and the name of each nation shall be central part, subordi form of grass areas in various events, such celebrations, which deepening ties among nations and for other.

- Symbol: Monumenta de Gran Colombia
- Service facilities: Kiosk, toilets, telephone booths
- Lighting: Symbols and plazas
- Others: Benches, dust boxes, Venecia, Colombia and Peru, Squan, national trees and f
- Event program: Andes Children's Parade, Folk song and dances, Independence Day

Plaza de los Precursor

Plaza de los Comercios



Dancing Plaza: Plaza de la Danza

In addition to providing a place for communication and enjoyment by the citizens of Bogotá through folk dances, social dancing and other related activities, this plaza will contribute to the preservation of traditional dances of the region by providing a place where they may be performed for the benefit of large audiences.

For these activities to take place it will be necessary to enlist the cooperation of professional and amateur groups and various individuals so that new and newly created dance compositions may be presented. In addition, on special occasions, programs should be held whereby visitors may dance and participate in contests.

- Main facilities:
 - Dancing stage, 40 long terrace, ponds

- Symbol facilities: Monument to dance
- Service facilities: Administration facilities, toilets, telephone booth, circular bus stop, information display board
- Lighting: 100 lux at dance areas
- Others: Pergolas, benches, dust boxes
- Event program:
 - Dance Day
 - Dancing teams presentation
 - Dance contests
 - Elegant Citizens Dance Contest
 - Famous Dances performance
 - Traditional Dance Preservation Program
 - Elegant Citizens Costume Ball
 - Children's folk dance lessons
 - Inter-collegiate dance concert

Chronological Ribbon

The Chronological Ribbon is a large mall, about 800m long, from the Latin American Anthropology Museum to the Acque Plaza.

This ribbon will display the culture and civilization of Latin America and Colombia's colonial period, war for liberation, liberation and establishment of Gran Colombia showing to visitors the cultural achievement of antiquity, the meaning of liberation and independence, and the flow of history.

The chronological ribbon will incorporate a chronological table of the nation's history, and in large small places in the axis to either side of the Main Pedestrian, displays of symbolic and historical objects, artifacts and will be combined with landscaping in a sequence of historical events.

Ancient ceremonies will be presented in relief memorial ceremonies in honor of historic events, and special programs for school children will be among the attractions.

Sculpture Ribbon: Camino de las Esculturas

Decorative landscapes are to be laid in the 35m long 40m wide area of the Sculpture Plaza to the Dancing Plaza. This ribbon will be landscaped to be usable for permanent sculpture exhibitions and to provide a place for the promotion of the property of sculpture.

- Facilities:
 - Permanent sculpture exhibition

Lighting: All plazas, 20 lux, other areas 10 lux

Others: Over bridges, canal and small fountains, color paved Main Pedestrian, Pedestrian, Sub-Pedestrian

- Event program:
 - Large graduate show
 - Artists Sculpture Exhibition
 - Temporary Sculpture Exhibition
 - Sculpture Show
 - International Sculpture Exhibition
 - Colombian Sculpture Exhibition
 - Art Sculpture Show
 - Street Art Show

Ancient Plaza: Plaza de los Aborígenes

A plaza is to be provided, mimicking Colombia's antiquity, and serving as both the Entrance Plaza for the Latin American Anthropology Museum and the first plaza of the Chronological Ribbon.

In the center of the plaza a replica of the Quilichao Stone, a symbol of ancient Colombia, is to be set up. In the parts of the plaza surrounding it, ceremonies of the Chacabá, Carib and other tribes will be performed, and Bache and other legends plays will be presented to children. The plaza that will be a center for a variety of events.

- Symbol:
 - Grand Women Stone, pond
- Service facilities: Drinking fountain, toilets, telephone booth, information display board
- Lighting: 50 lux
- Others: Pergolas, benches, dust boxes
- Event program:
 - Revival of ceremonies of Falsa Chibcha
 - Revival of ceremonies of Falsa Carib
 - Revival of ceremonies of Falsa Aruana
 - Revival of ceremonies of Falsa Achiagua
 - Children's plays from the Bache legends
 - Children's plays from the Bache legends
 - Reconstructed archeological site

Ancient Picture Scroll: Sendero de la Cultura Prehispánica

This scroll, about 300m long and 30-50m wide, is to feature six distinctive spaces, created by landscaping on both sides of the Main Pedestrian.

Urban patterns symbolizing of social children, their epochs and huge stone structures and other symbols and materials are to be used.

Further, the Main Pedestrian, in addition to having concrete pavement, will have traditional Carib graphics patterns will have colorful representation of the nation's chronology, featuring events from each period of history.

- Symbol:
 - Egyptian forms, statues
- Lighting:
 - Symbol, columns and garden, 20 lux
 - Other areas, 10 lux
- Others:
 - Actual garden: Maya garden, Motica garden, Inca garden, canal and small ponds, color paved Main Pedestrian (traditional pavement) benches, dust boxes, information display board
- Event program:
 - Inca: Bache Festival (Achiagua Day, Maya Day, Motica Day, Inca Day)

Spanish Plaza: Plaza de la Hispanidad

A Spanish Garden is to be made. It will have in it the Columbus Plaza, Melchor Plaza, and a Spanish Village. It is thought that this will be where events such as those commemorating the discovery of the New World by Columbus to the age of colonization and those related to social phenomena are staged.

- Main facility:
 - Spanish Building (including cafe, toilet, telephone booth, rest house)

- Symbol:
 - Monument (Statue of Oroño)

- Service facilities:
 - Drinking fountain, circular bus stop

- Others:
 - Colombus Plaza, Melchor Plaza, Spanish Village, Café Plaza, pergola, benches, dust boxes, information board

- Lighting:
 - Symbol and plaza, 50 lux

- Event program:
 - Colombus Day gathering
 - Colombus Day plans
 - Spanish dances
 - Mealtime Festival
 - Colombus Festival

Independence Picture Scroll: Sendero de la Independencia

The scroll extends a distance of about 300m from the Spanish Plaza to the Gran Colombia Plaza and is about 40m wide.

Here a panorama is unfolded depicting the period from colonization to liberation and unification as Colombia.

In addition to recording major events of history, the Main Pedestrian will feature to either side statues of the dead and heroes of this struggle for independence.

Further, in addition to having places to commemorate the histories of Cartagena and Boyacá, there will be a large place to forever honor all of the unknown heroes who gave their lives to their country, thus making this a plaza to all of Colombia's independence.

- Symbol:
 - Heroes Monument
 - Unknown Freedom Fighters Monument

- Lighting:
 - Plaza and small plaza 20 lux
 - Other areas 10 lux

- Others:
 - Pergolas, benches, dust boxes, Main Pedestrian (with historical chronology and traditional pavement cement), Sub-Pedestrian

- Events:
 - Children's Parade of War Heroes
 - Cartagena Independence Festival
 - Boyacá Victory Festival
 - Mealtime Festival
 - Nuevo Granada Festival

Republic Plaza: Plaza del Republicas

At the end of the Chronological Ribbon, the Gran Colombia Plaza is provided to honor Simon Bolivar and the heroes of the fight for independence and to symbolize the friendship of the Andean nations.

A monument is to be set up in the middle of an expanse of lawn, and in a circle pattern emanating from it, there is to be the plaza of the Andean nations. In each country's plaza, resting spaces will be provided and the national flag and flower of each nation shall be indicated. In the central part, subordinate spaces in the form of a circle are to be provided. In these local events, such as National Day celebrations, which can contribute to deepening ties among the Andean nations and for other purposes.

- Symbol:
 - Monument to Gran Colombia

- Service facilities:
 - Toilet, toilets, drinking fountain, telephone booth

- Lighting:
 - Symbol and plaza, 100 lux

- Others:
 - Benches, dust boxes, pergola, Venezuela, Colombia, Brazil, Ecuador, and Peru Souvenir Gardens, with national tree and flowers

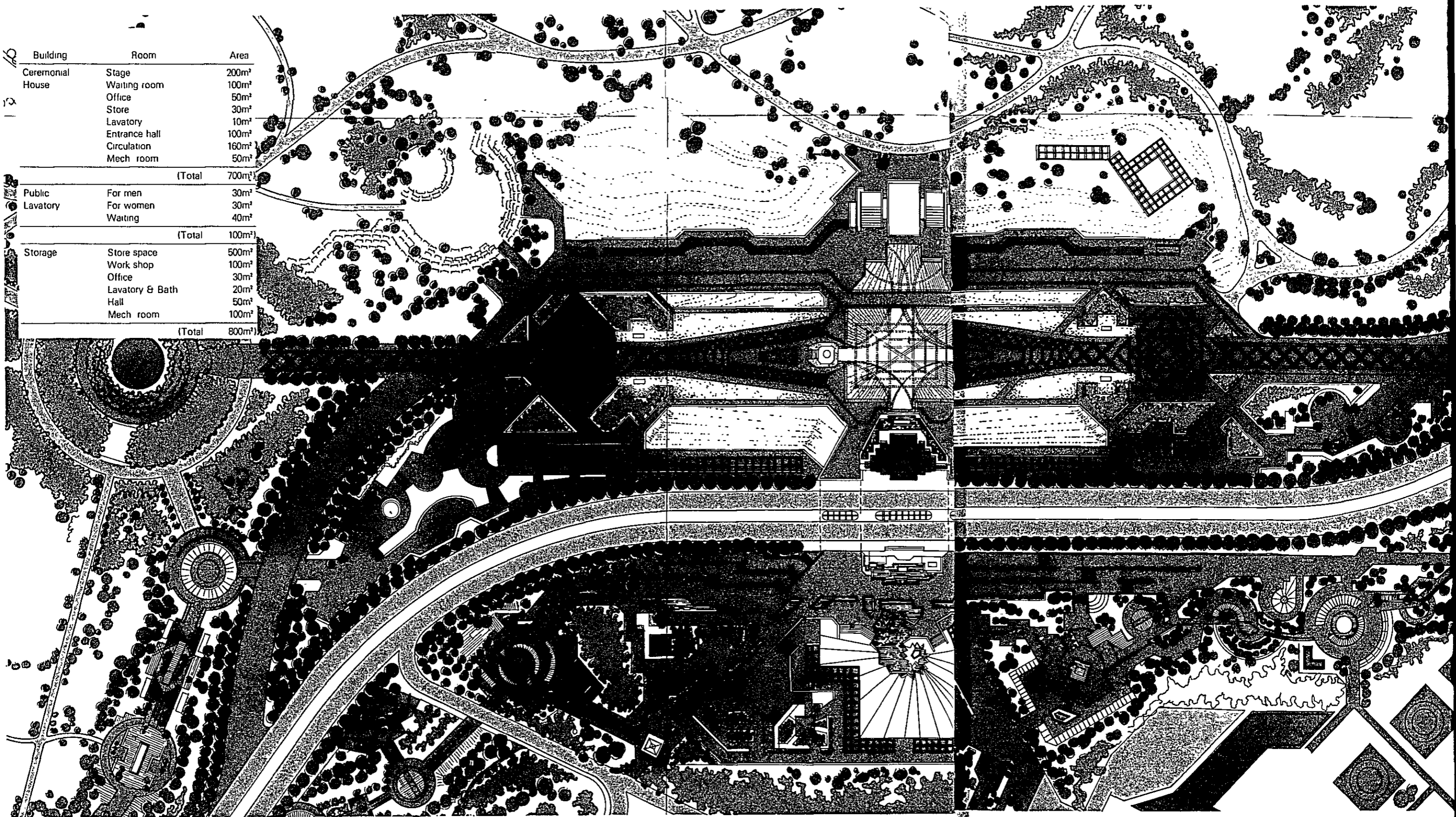
- Event program:
 - Andean Children's Party
 - Folk song and dances of the Andean nations
 - Independence Day celebrations

Actual Ribbon

This is to serve as a venue for publicizing the social, economic and political development of the Colombian nation, and to provide a place for public expression of thoughts, attitudes and beliefs, and thus is to have a strong element of communication. It will be a high-level space because of the high density of visitors who will come here due to the way that pedestrian flows will bring many people here.



Building	Room	Area
Ceremonial House	Stage	200m ²
	Waiting room	100m ²
	Office	50m ²
	Store	30m ²
	Lavatory	10m ²
	Entrance hall	100m ²
	Circulation	160m ²
	Mech room	50m ²
(Total)		700m ²
Public Lavatory	For men	30m ²
	For women	30m ²
	Waiting	40m ²
(Total)		100m ²
Storage	Store space	500m ²
	Work shop	100m ²
	Office	30m ²
	Lavatory & Bath	20m ²
	Hall	50m ²
	Mech room	100m ²
(Total)		800m ²



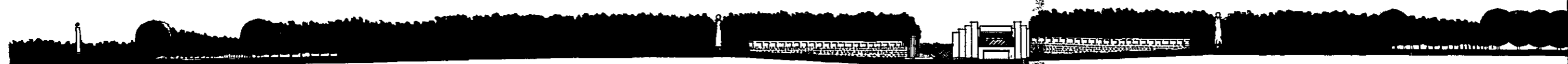
Plaza de la
Tecnología

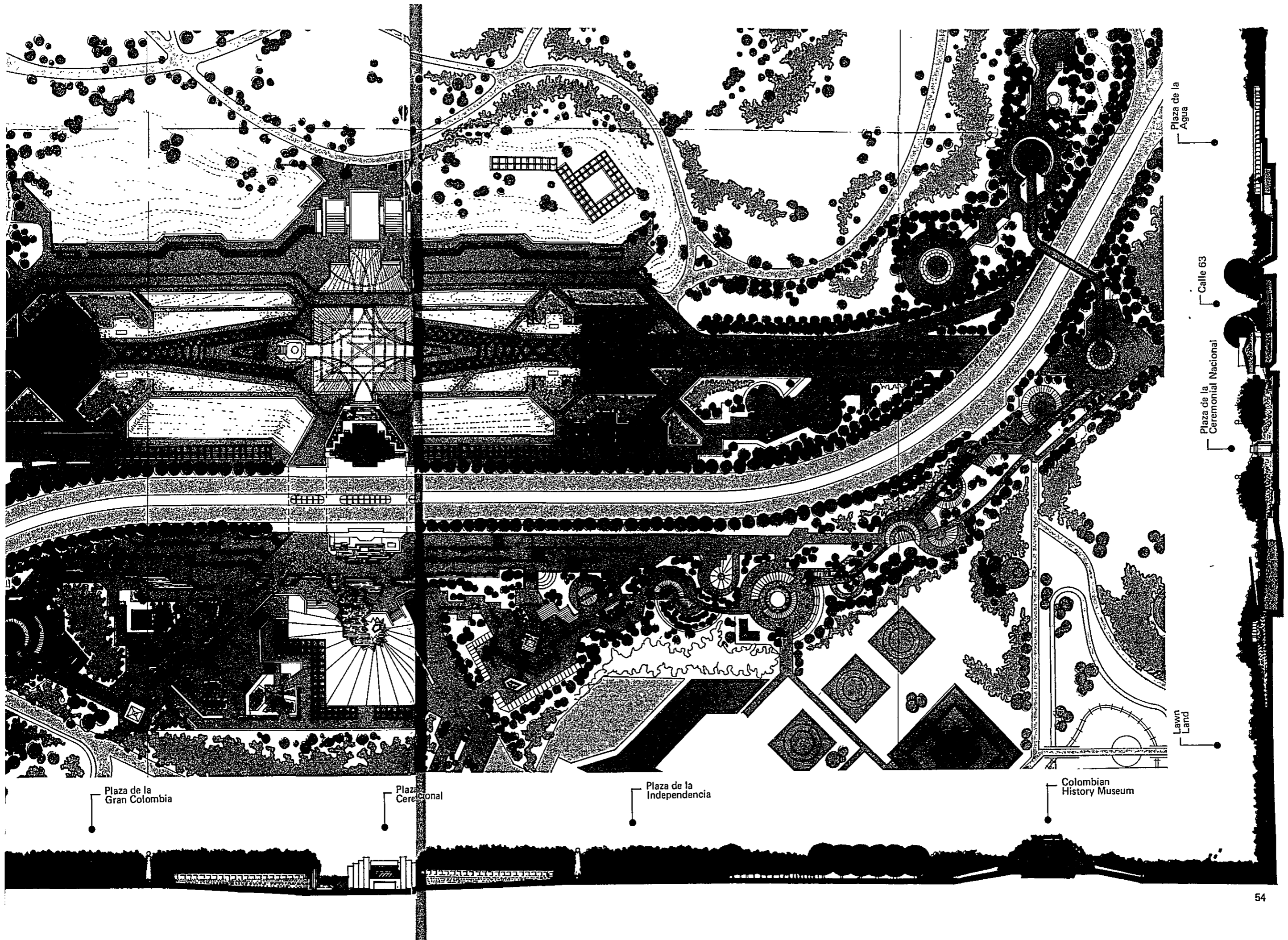
Calle 63

Plaza de la
Gran Colombia

Plaz
Cercional

Plaza de la
Independencia





Plaza de la Gran Colombia

Plaza Cerecional

Plaza de la Independencia

Colombian History Museum

Lawn Land

Plaza de la Ceremonial Nacional

Plaza de la Agua

Calle 63

Fig. — 39 Commemorative Symbol Zone



6.1 実施計画概要

10年実施計画

シモンボリバール公園開発整備事業は、10年間で完成させるものとし、1981年を事業着手、1990年を事業完了目標年度とする。

建設プログラムは以下の3期に分け実施される。

- Phase I 1981年～1982年（2年間）
- Phase II 1983年～1986年（4年間）
- Phase III 1987年～1990年（4年間）

Phase I (1981-1982)

多面的準備活動として、実行組織の確立、導入施設のフェージビリティ検討と施設内容の設定、詳細設計、苗圃の整備、周辺道路の改変等を行なう。又、緊急事業として、1983年に予定されるシモンボリバール生誕200年祭に対応した、国民祭典広場の整備を開始する。

Phase II (1983-1986)

本格的公園整備を行なう期間であり、1986年に予定されるFootball world Cupに目標を合わせ、シモンボリバール公園の特徴を市民に強く印象づけるコアとなる施設、及び主要な公園基盤施設の整備を行なう

Phase III (1987-1990)

公園施設の拡充、修景的植栽の充実、便益施設の増強等により、公園環境を当初のプランに基づいて完璧に実体化する期間であり、Phase I、IIで蓄積された運営及び管理計画のknow-howに基づき、多様なプログラムによる公園利用の促進を計る時期でもある。

新たな社会的要請に対応して、公園施設内容の見直し、利用プログラムの拡充による施設需要の再検討等を行ない、新たな整備計画の立案と実施が求められる。

事業対象エリア

開発整備事業の対象となる面積は下表の通りである。

ゾーン	開発面積	新規開発	既存改善
Grand Mall Zone	43 0 ha	43 0	—
Commemorative Symbol Zone (110 ha地区)	94 2	94 2	—
Static Recreation Zone (El Lago)	16 1	3 1	13 0
Cultural Zone (Mi Tierra)	21 6	21 6	—
Amusement Zone (El Salitre)	40 1	—	40 1
Sports Recreation Zone	44 4	19 1	25 3
Botanical Garden	16 9	—	16 9
Urban Center	24 7	24 7	—
合計	301 0	205 7	95 3

計画利用者数

利用者数予測分析に基づき開発目標年度までの毎年の利用需要を設定する。(単位：1000人)

ゾーン	年度	1980	81	82	83	84	85	86	87	88	89	1990
Commemorative Symbol Zone	Static Rec. Zone	5,435.3	5,652.9	5,879.3	6,114.6	6,328.3	6,549.7	6,779.9	7,116.4	7,261.8	7,476.9	7,698.2
	Static Rec. Zone	990.9	1,030.6	1,071.8	1,114.7	1,153.7	1,194.1	1,236.0	1,279.2	1,323.9	1,363.1	1,403.4
Cultural Zone		2,019.7	2,100.5	2,184.7	2,272.1	2,351.5	2,433.8	2,519.3	2,607.2	2,698.4	2,778.3	2,860.6
Amusement Zone		7,634.0	7,939.6	8,257.6	8,588.0	8,888.3	9,199.2	9,522.5	9,854.7	10,199.4	10,501.4	10,812.3
Sports Rec. Zone		6,370.9	6,625.9	6,891.3	7,167.1	7,417.6	7,677.1	7,946.9	8,244.2	8,511.8	8,763.9	9,023.3
Botanical Garden		184.3	191.6	199.4	207.2	214.7	222.0	229.9	237.9	246.2	253.5	261.0
Urban Center		10,285.1	10,696.8	11,125.2	11,570.4	11,974.9	12,393.8	12,829.6	13,277.1	13,741.4	14,148.3	14,567.1
合計		32,920.2	34,237.9	35,609.3	37,034.3	38,329.0	39,669.7	41,064.1	42,496.7	43,983.0	45,585.4	46,626.1

参考一既存公園改善方針

以下はコロンビア側チームによって設定された既存公園の改善方針である。

1) 改善と拡充

El Lago及びEl Salitreの遊園地地区は、現在の機能をより一層充実に得る様、サービス施設の充実、植栽密度の向上を図る。

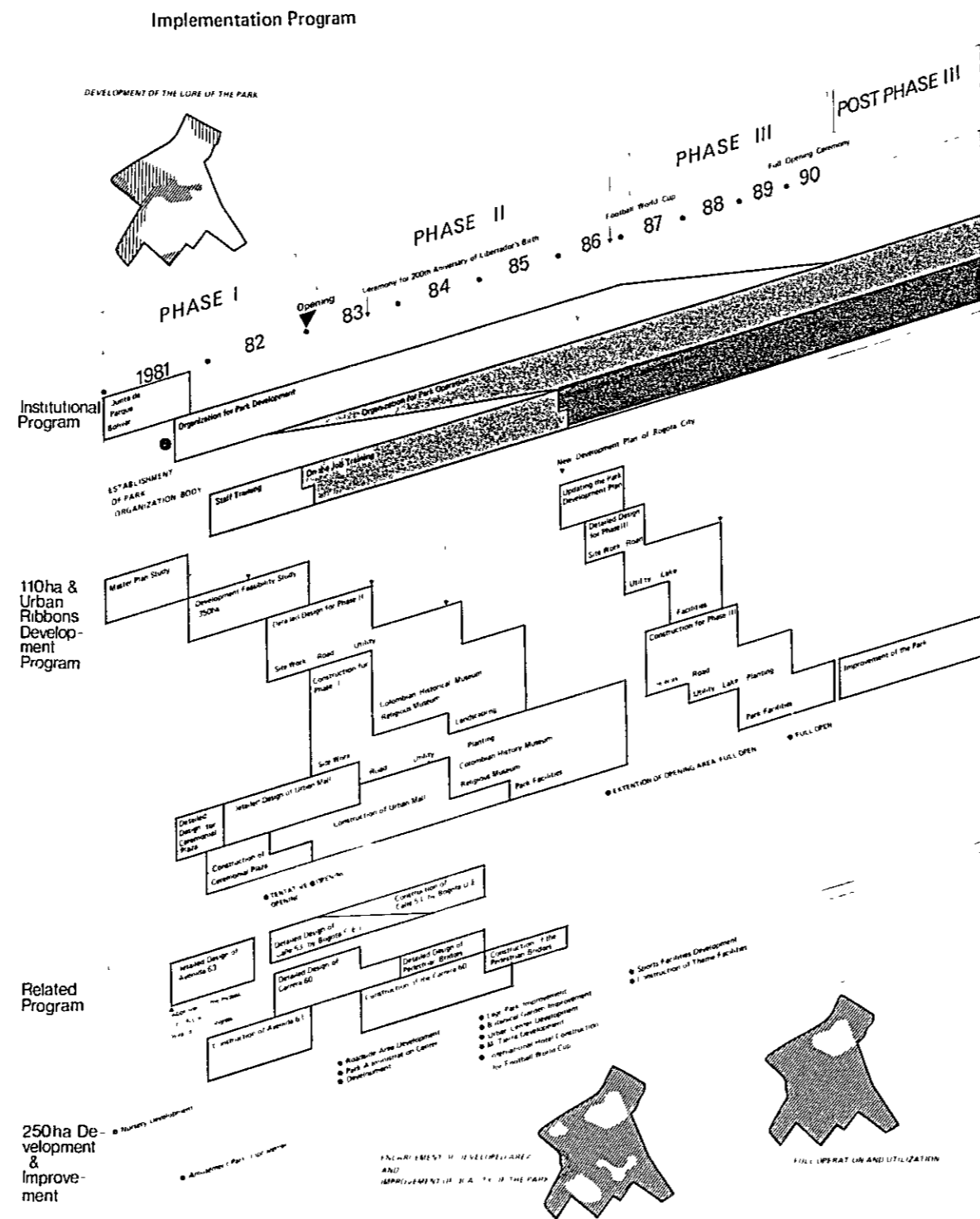
2) 拡張

既存スポーツ地区は、隣接するボゴタ市所有地19haを取り込み、新しいスポーツ施設の拡充及びEl Salitreの改変に伴なう既存スポーツ施設の移設を行なう。

3) 改変

El Salitreは、既存の多面的な性格を整理し公園全体との調和をとれる様、新規施設及び園地の開発を行なう。すなわち、Urban Mall沿いの博物館地区、中央部の交通公園及び児童用分区分園(子供の国)及び拡充された遊園地がCarrera 68沿いに開発される。

Implementation Program



6.2 実施組織

開発組織のあり方

本公園は、多様な開発方式、開発内容、開発主体を内包しており、これらを統括し、一貫した方針で、公園開発を進め運営していく独立した組織の確立が重要である。

この組織は、公園の開発段階に合わせ、準備、建設、運営のそれぞれの機能を順次増強させながら、組織形態を変容させていくことが求められる。

公園開発委員会

本公園開発を推進するための意志決定を審議する機構として公園開発委員会が設置される。

本委員会は、公園開発に関係する政府諸機関、ボゴタ市諸機関及びその他の公共及び民間団体によって構成され、公園の開発及び運営に関する、方針、予算分担、諸機関間の業務調整等について審議する。本委員会における決定事項は、次に述べるシモンボリバル公園公団によって実施に移される。

公園公団

本公園開発を推進する執行組織として公園公団（Park Development Organization）を設立する。本組織は、公園の建設、運営を一貫して管理する母体となり、その実行に関する権限を有するものである。公園公団は、公園開発委員会の指導及び評価の基に、一貫した方針を持って事業の実現を計るものである。

既存公園に係わる諸運営組織は発展的に解消され、本公園公団に吸収統合されることが望ましい。

開発段階の組織構成

開発段階においては以下の様な機能が求められる。

- 1) 調査計画、企画設計
- 2) 工事契約、管理

この段階においては、多岐に渡る開発内容と主体を調整し、公園開発を確実に推進していくため行政的執行力と財政的裏付けによる強力な組織であることが望まれる。

組織の構成は以下の通りである。

- ライン→財務、計画、建設の3部門
- スタッフ→総務、広報の2部門

特にこの段階においては、運営に先立つ、一般への広報活動、公園職員の教育訓練が忘れられてはならない。

運営段階の組織構成

運営管理段階においては、以下の様な機能が求められる。

- 1) 広報、宣伝その他のプロモーション活動
- 2) 公園運営の執行
- 3) 公園施設の維持管理・保守点検
- 4) 公園利用者の安全確保
- 5) 公園利用に関する全ての事務処理

この段階は、公園建設の完成地区から順次開園されることに伴って拡張されていく。従って、開発組織から運営組織への無理のない組織変更が求められる。

組織の構成は以下の通りである。

- ライン→総務、運営、営繕、警備

本公園はゾーン毎に異なった特性を持つことから、運営部門及び警備部門はゾーン毎の部課を持つことが望ましい。一方営繕部門に関しては、植

栽、ユーティリティ等専門分野が異なるので、全公園地区について分野別の部課を構成することが効率的である。

- スタッフ→調査計画、広報

公園運営の開始に伴ない、利用者に対する催物情報の伝達や運営計画の基礎となる利用者の動向の調査分析が重要な機能となる。

人材計画

本公園建設に関わる事業が全て完成した後、全公園の運営に要する人材は以下の通りである。

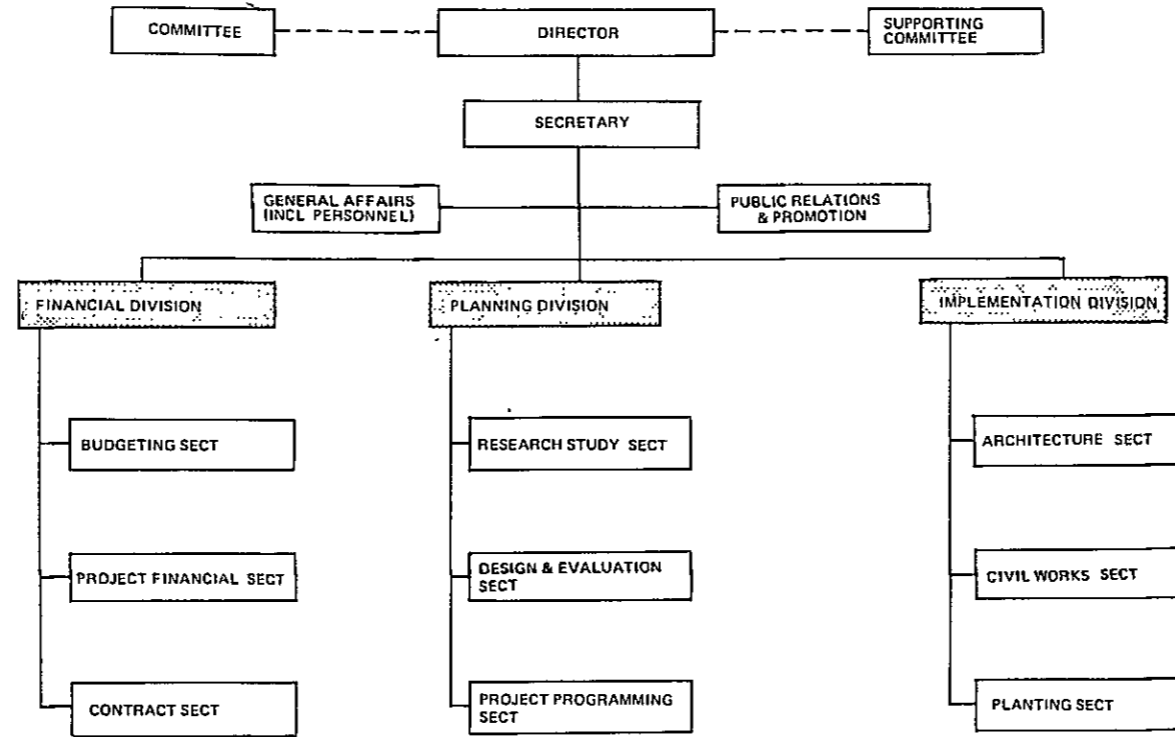
- 特別職（園長及び特別職員） 20人
 - 上級職（上級管理職員） 30人
 - 中級職（中級事務及び技術者） 150人
 - 下級職（下級職員及び作業員） 300人
- 合計 500人

上記の職員に加え、以下の様な人材の協力が見込まれる。

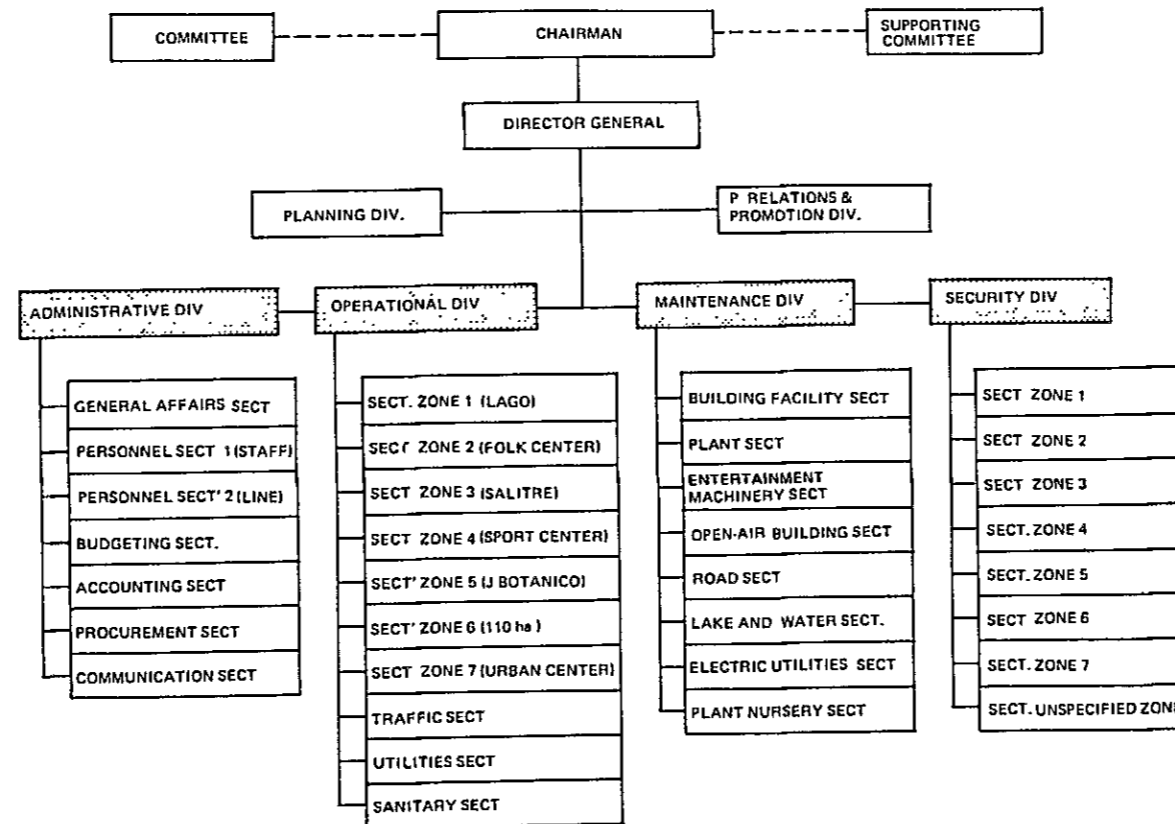
- 1) 特別なイベントに対応した臨時職員
- 2) 公園警護に関する特に訓練された公園警察官
- 3) 利用者の誘導、手助けや清掃等を行なうボランティア
- 4) 各テーマ施設の運営職員

職員の雇用にあたっては、公園経営からして、Permanent Staff を最少限に抑え、臨時職員の利用を促進すると共に、Permanent Staff については、十分な研修及びOn the job trainingのプログラムが提供されることが望まれる。

開發段階 組織構成



運営段階 組織構成



6.3 運営計画

運営方針

既存都市公園の実態調査及び公園運営に関する担当者との協議に基づき、シモンポリバール公園に対する基本的運営方針が以下の通り提案された。

- 市民の自由で自発的なレクリエーション活動を最大限に促進するプログラムが立てられること。
- 多様な社会階層が参加し得る様々な文化教育娯楽活動を企画実現する柔軟な運営体制を持つこと。
- 都市災害時において市民の緊急避難所となり得る様な、オープンスペース、サービス施設、放送設備を持ち、緊急時の即応体制を整えること。
- 本公園の精神の象徴であり、将来へ向けて残すべき自然環境の保全、維持管理を総合的に強化すること。

公園運営基本計画

1) 運営時間

公園全域について午前8時より午後6時までとする。但し下記の施設及びゾーンについて運営時間を延長する。

- テーマ施設・スポーツ施設 午後8～9時
- 遊戯施設 Mi Tierra 午後10～11時
- Urban Mall, Urban Center 無制限

その他、土日曜及び祝祭日、特別な催物開催時等には、開園時間を延長する。

2) 利用料金

公園区域の利用は、基本的に無料である。但し下記の施設について利用料金を徴集するが、この料金は、既存公園と同程度のものとする。

- 駐車場 10～12ペソ/時間

- テーマ施設 10ペソ/回
- 園内交通手段 5ペソ
- 貸自転車 30ペソ/時間
- ボート 20ペソ/時間
- 遊戯施設 施設毎に異なるが 5～30ペソ/回

上記施設については、月1回、又は祝祭日等に無料解放の機会を設け、低所得層の利用を促進することも求められよう。

3) 民間委託事業

レストラン、キオスク、一部テーマ施設等の民間へ委託経営させる施設については、公園公団が、出店計画を検討の上許可するものとし、その運営について適切な指導を行なう。

4) 利用者サービス

公園公団は、以下の様な施設を設置し、必要な職員を配置して利用者の便宜を計る。

- 公園案内所 催物案内、迷子案内、身障者に対するサービス、その他
- 救護所 急病、けが人の応急処置、看護
- 託児所 幼児の一時預り
- 警備員詰所 安全管理、事故の防止

上記の他、高校生を中心としたボランティアによる利用者サービスが期待できるが、教育的効果を上げる様計画されることが必要である。

5) 安全管理

公園の安全管理については、以下の様な機能が考慮されること。

- 公園利用を安全かつ快適に行なえること、す

なわち、事故や犯罪を未然に防ぐこと。

- 自然災害、火事、暴動等の緊急事態に対応できること。

上記の機能を果たすため、以下の3要素を総合的に組み合わせた、新しい安全管理システムが提案される。

- 安全管理施設—ゲート、フェンス、防護柵等
- 安全管理要員—公園警察官、案内員等
- 通信連絡手段—園内放送設備、トランシーバー、有線テレビネットワーク等

これ等の施設—人員—機械は 公園景観に調和させ目立たない様に配置されること。

6) 公園環境の維持

公園環境を構成する植栽・水面・施設・設備等が、その目的を十分機能させる様、長期短期それぞれの維持管理計画を立て、それに基づいて効果的な環境維持が行なわれること。

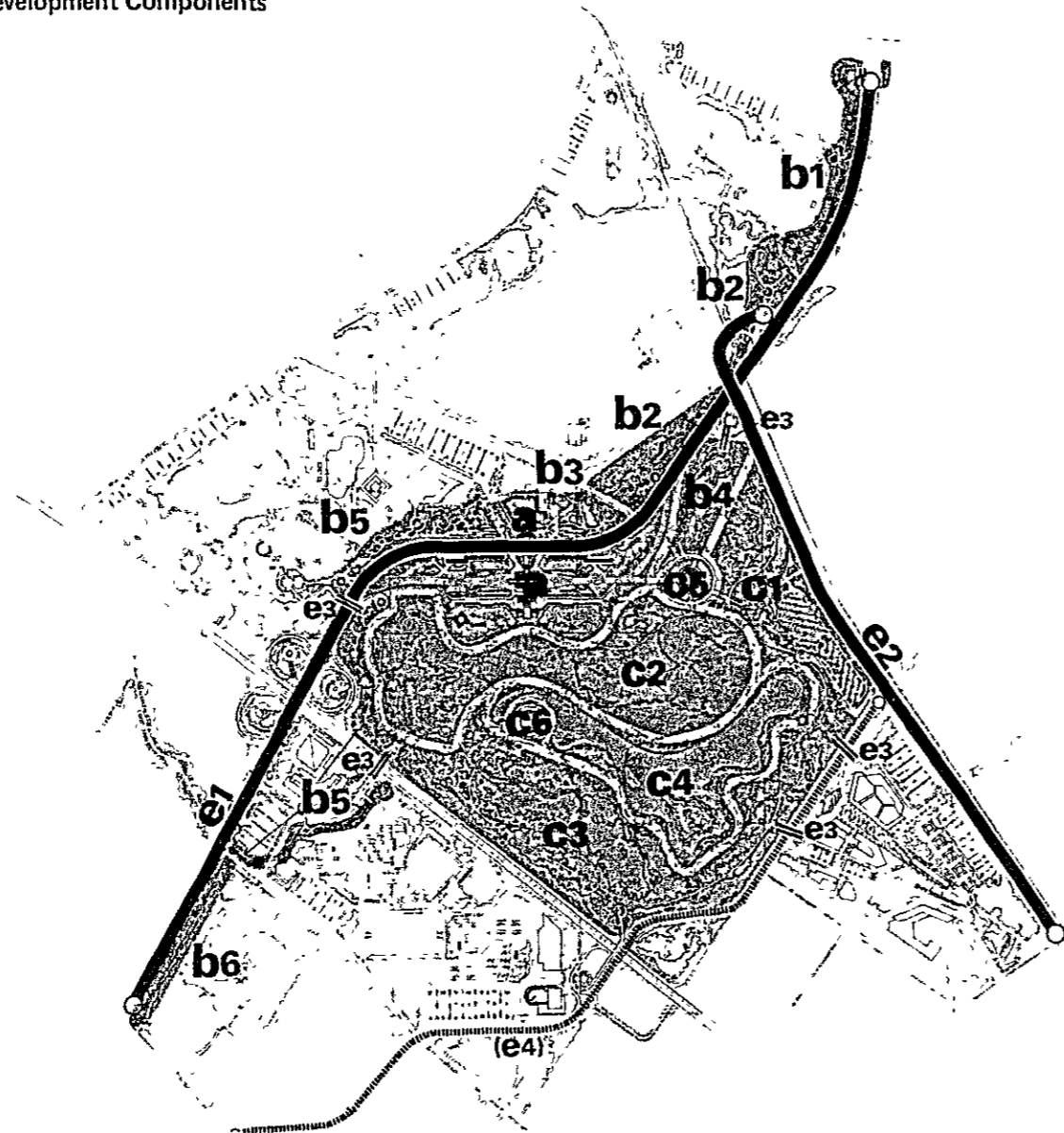
- 長期維持管理計画（5～10年）
利用者に対する各種調査を定期的に行ない、各営造物が必要に適合しているかどうかチェックを行ない、耐用年限に達したのから、更新又は補修する。

- 中期維持管理計画（1～2年）
植栽及び雨水の影響の大きい湖、毎年の記念式典に対応した広場等、年間のサイクルを基本とする営造物について、年間計画を立て、維持管理、補修を行なう。

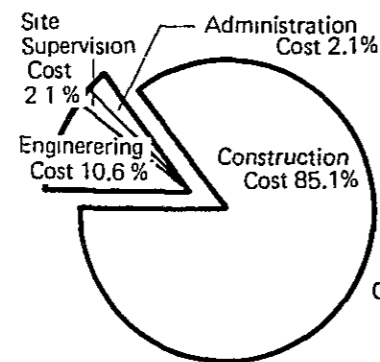
- 短期維持管理計画（週、月）
特に利用者の多い地区について、週単位、日単位で巡視を行ない、破損ヶ所を補修すると共に公園全域について清掃、点検等の日常業務の計画を立て、効率的な維持管理を行なう。

6.4 事業費概算

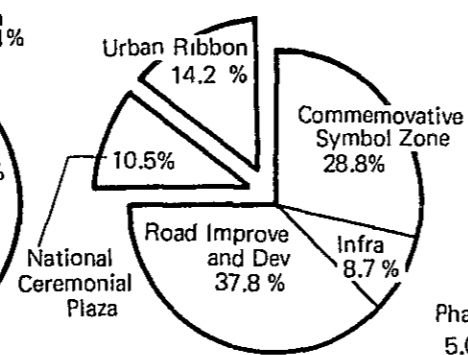
Development Components



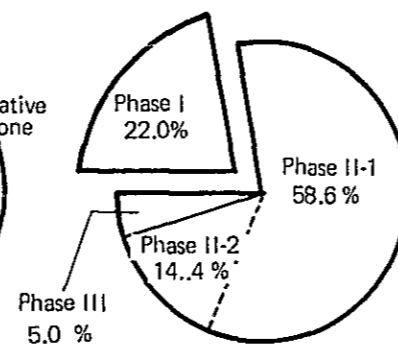
Project Cost by Item



Project Cost by work



Project Cost by Phase



概要

PROJECT COST IN GENERAL

Construction Costs	\$2,564,788,000
Engineering Supervision and Administration Cost	448,837,900
Total	\$3,013,625,900

PROJECT COST BY WORK

National Ceremonial Plaza Dev	\$ 315,088,000
Urban Ribbon Dev	428,846,800
Commemorative Symbol Zone Dev	870,436,475
Infrastructure Dev	261,489,200
Road Improve and Dev	1,137,765,425
Total	\$3,013,625,900

PROJECT COST BY PHASE

Phase I	\$ 664,442,625
Phase II	2,199,007,700
Phase II-1	1,765,279,715
Phase II-2	433,727,985
Phase III	150,175,575
Total	\$3,013,625,900

前提

公園開発事業費の概算見積りは、以下の様な前提の下に行なわれた。

- 1) 建設費は、1981年7月現在の単価による。
- 2) 全ての単価は、材料費、工事費、人件費、及び諸経費を含む。従って、ここで言う建設費は、契約工事額（Contract Cost）である。
- 3) 調査設計費等は以下の通り設定された。

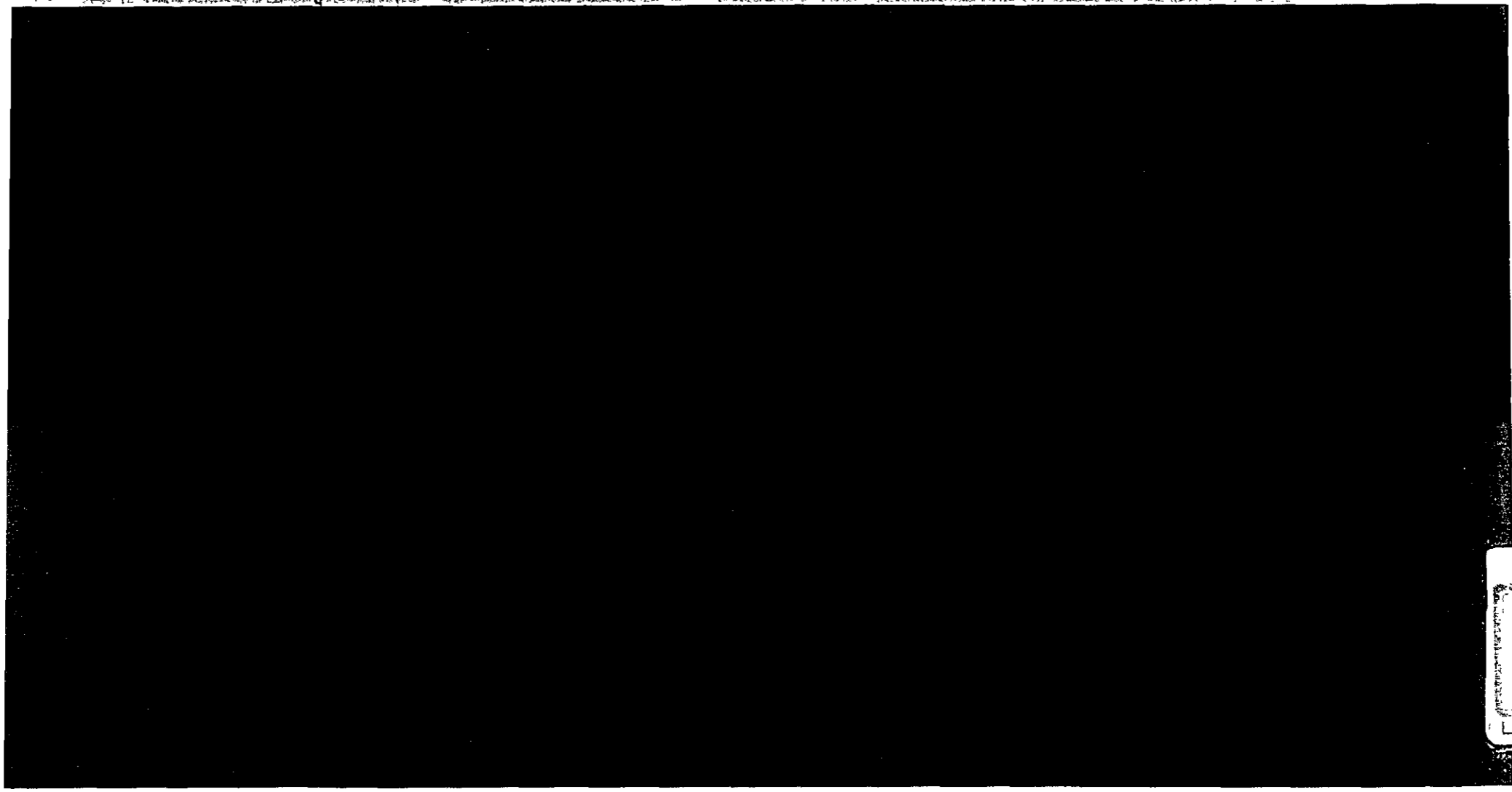
調査費、設計費等	建設費の	12.5%
工事監理費	"	2.5%
事業管理諸経費	"	2.5%
間接費計	建設費の	17.5%

- 4) Contingency は含んでいない。

Whole Project Catalog

Development Project	Development Area (ha)	Development Year									Development Cost (Colombian Pesos)			Development Cost by Phase (Colombian Pesos)				
		Phase I		Phase II			Phase III				Total	Construction	Engineering	Phase I	Phase II 1	Phase II 2	Phase III	
		81	82	83	84	85	86	87	88	89	90							
A National Ceremonial Plaza																		
Development	17.0	■	■									315,088,000	268,160,000	46,928,000	315,088,000	—	—	—
B Urban Ribbon Development																		
B-1 Cultural Ribbon	3.5				■	■						73,079,125	62,195,000	10,884,125	—	73,079,125	—	—
B-2 Chronological Ribbon	5.9					■	■					102,026,425	86,831,000	15,195,425	—	102,026,425	—	—
B-3 Actual Ribbon	1.8				■	■						46,098,775	39,233,000	6,865,775	—	46,098,775	—	—
B-4 Liberty Ribbon	2.0				■	■						30,749,750	26,170,000	4,579,750	—	30,749,750	—	—
B-5 Youth Ribbon	11.5					■	■					158,229,025	134,663,000	23,566,025	—	158,229,025	—	—
B-6 Natural Ribbon	1.3					■	■					18,663,700	15,884,000	2,779,700	—	18,663,700	—	—
C Commemorative Symbol Zone																		
Development	94.2											870,436,475	740,797,000	129,639,475	—	371,181,325	349,079,575	150,175,575
C-1 Main Gate Area	13.3					■	■					149,243,800	127,016,000	22,227,800	—	149,243,800	—	—
C-2 Lawn Land	28.1	□	■	■	■	■						129,705,900	110,388,000	19,317,900	—	—	129,705,900	—
C-3 Wood Land	36.1				■	■	■					219,373,675	186,701,000	32,672,675	—	—	219,373,675	—
C-4 Lake and Lakeside	13.2	□	□	□	□	□	■	■	■			150,175,575	127,809,000	22,366,575	—	—	—	150,175,575
C-5 Colombian History Museum	2.0					■	■					160,873,950	136,914,000	23,959,950	—	160,873,950	—	—
C-6 Religious Museum	1.5					■	■					61,063,575	51,969,000	9,094,575	—	61,063,575	—	—
D Infrastructure Development																		
Development	(137.2)											261,489,200	222,544,000	38,945,200	76,330,450	100,510,340	84,648,410	—
D-1 Earth Work		■	■	■	■	■	■					32,254,925	27,451,000	4,803,925	9,730,175	3,904,290	18,620,460	—
D-2 Storm Water Drainage Work			■	■	■	■	■					52,851,500	44,980,000	7,871,500	19,521,550	14,020,000	19,309,950	—
D-3 Fresh Water Supply Work			■	■	■	■	■					15,611,050	13,286,000	2,325,050	5,651,750	6,158,175	3,801,125	—
D-4 Sanitary Sewerage Work			■	■	■	■	■					19,240,625	16,375,000	2,865,625	14,000,125	2,494,525	2,745,975	—
D-5 Electrical Work			■	■	■	■	■					108,417,250	92,270,000	16,147,250	11,167,200	66,351,075	30,898,975	—
D-6 Telecommunication Work			■			■	■					33,113,850	28,182,000	4,931,850	16,259,650	7,582,275	9,271,925	—
E Road Improvement and Development																		
Development												1,137,765,425	968,311,000	169,454,425	273,024,175	864,741,250	—	—
E-1 Improvement of Calle 63	11.9	■	■	■								499,211,675	424,861,000	74,350,675	273,024,175	226,187,500	—	—
E-2 Modification of Carrera 60	3.5				■	■	■					476,991,250	405,950,000	71,041,250	—	476,991,250	—	—
E-3 Pedestrian Bridge (5 bridges)					■	■	■					161,562,500	137,500,000	24,062,500	—	161,562,500	—	—
Grand Total	152.6											3,013,625,900	2,564,788,000	448,837,900	664,442,625	1,765,279,715	433,727,985	150,175,575

JICA



1