

PANGASINAN

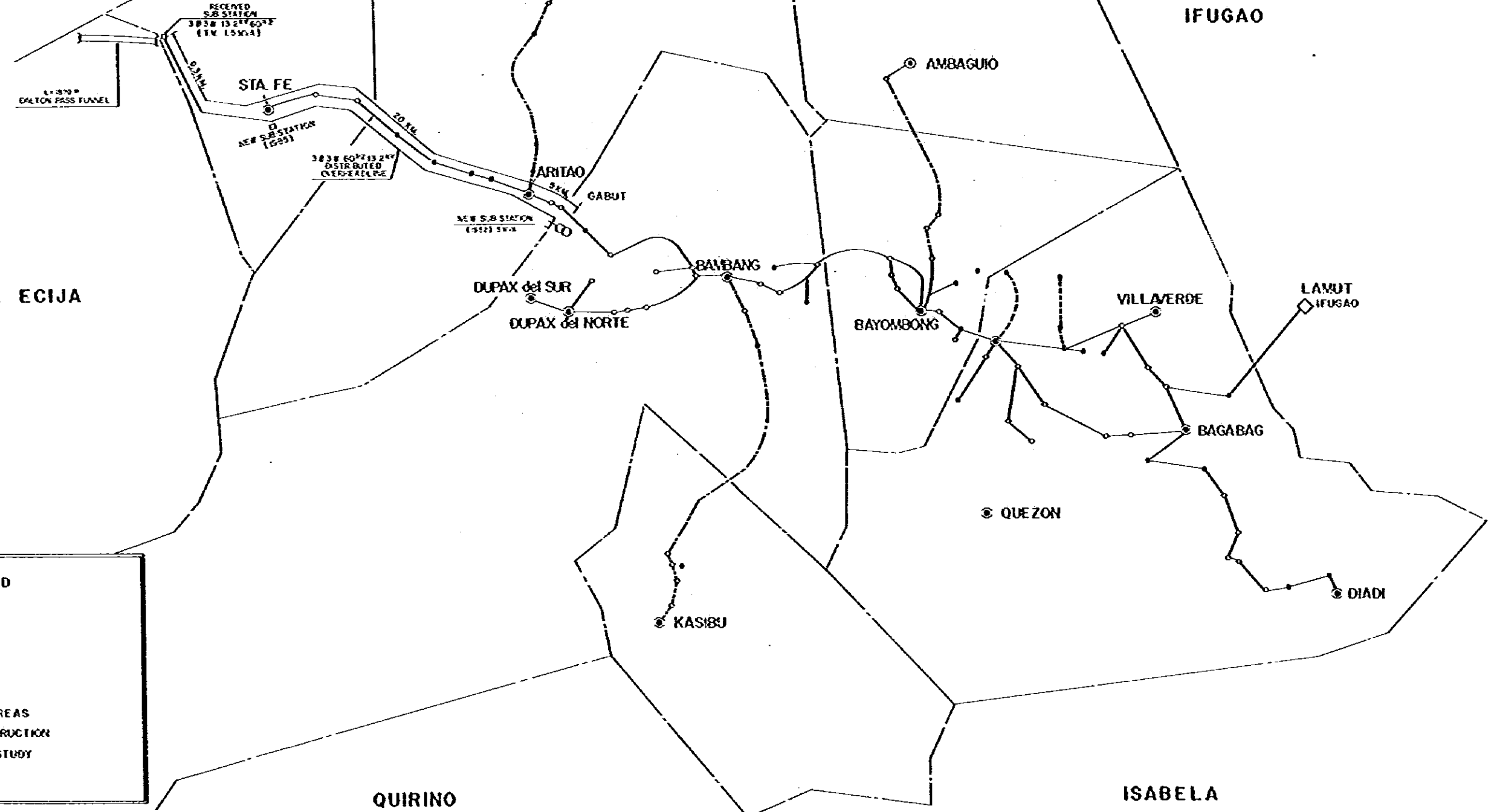
BENGUET

IFUGAO

NUEVA ECIJA

QUIRINO

ISABELA



LEGEND

- ⊙ MUNICIPALITY
- BARRIO
- SITIO
- ENERGIZED AREAS
- - - UNDER CONSTRUCTION
- · - · - FEASIBILITY STUDY

JAPAN INTERNATIONAL COOPERATION AGENCY

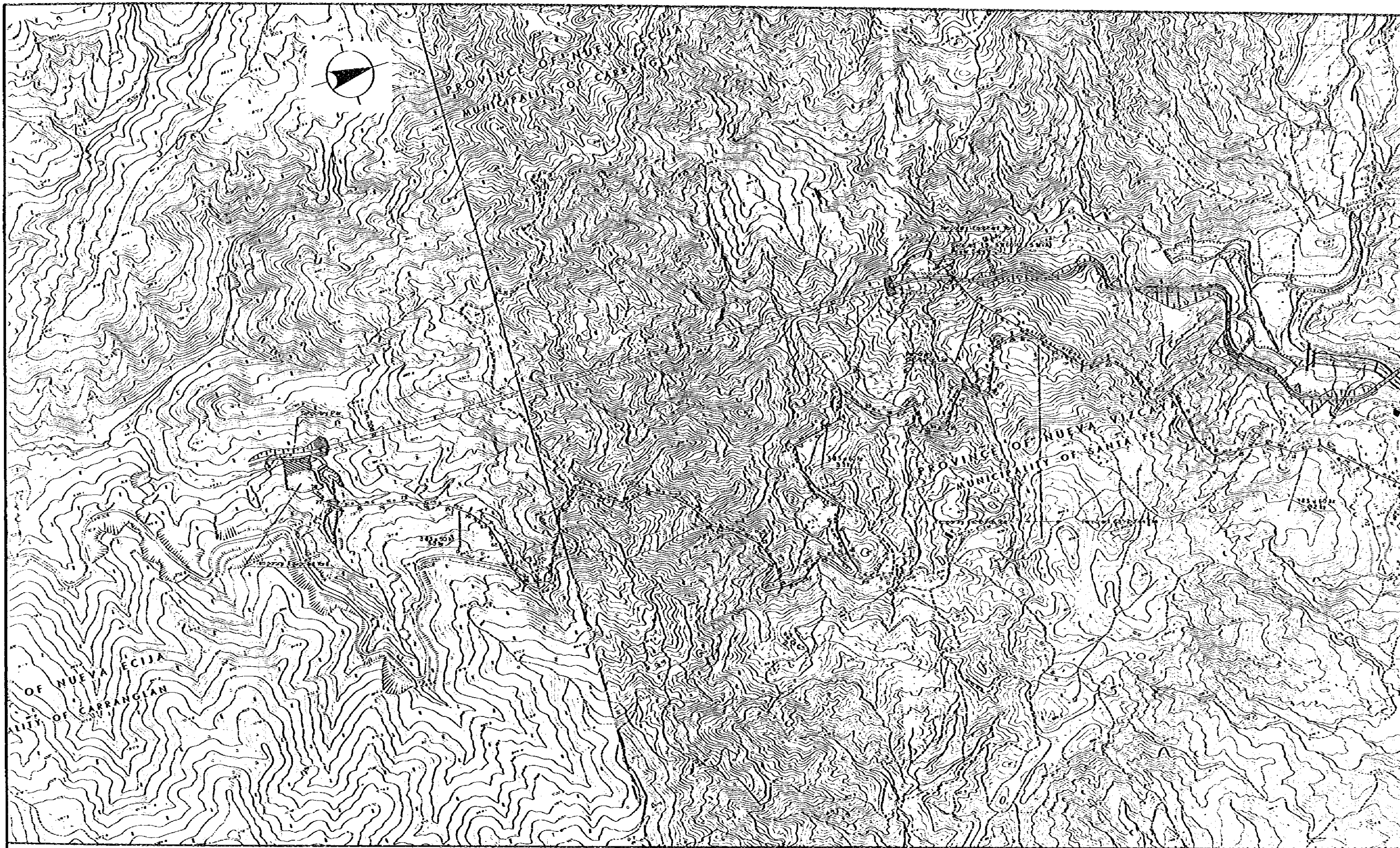
DALTON PASS TUNNEL PROJECT
FEASIBILITY STUDY

SECTION A - NEW ALIGNMENT ROUTE
DISTRIBUTION MAP
FOR MOST LIKELY ROUTE

DATE: MAR '82

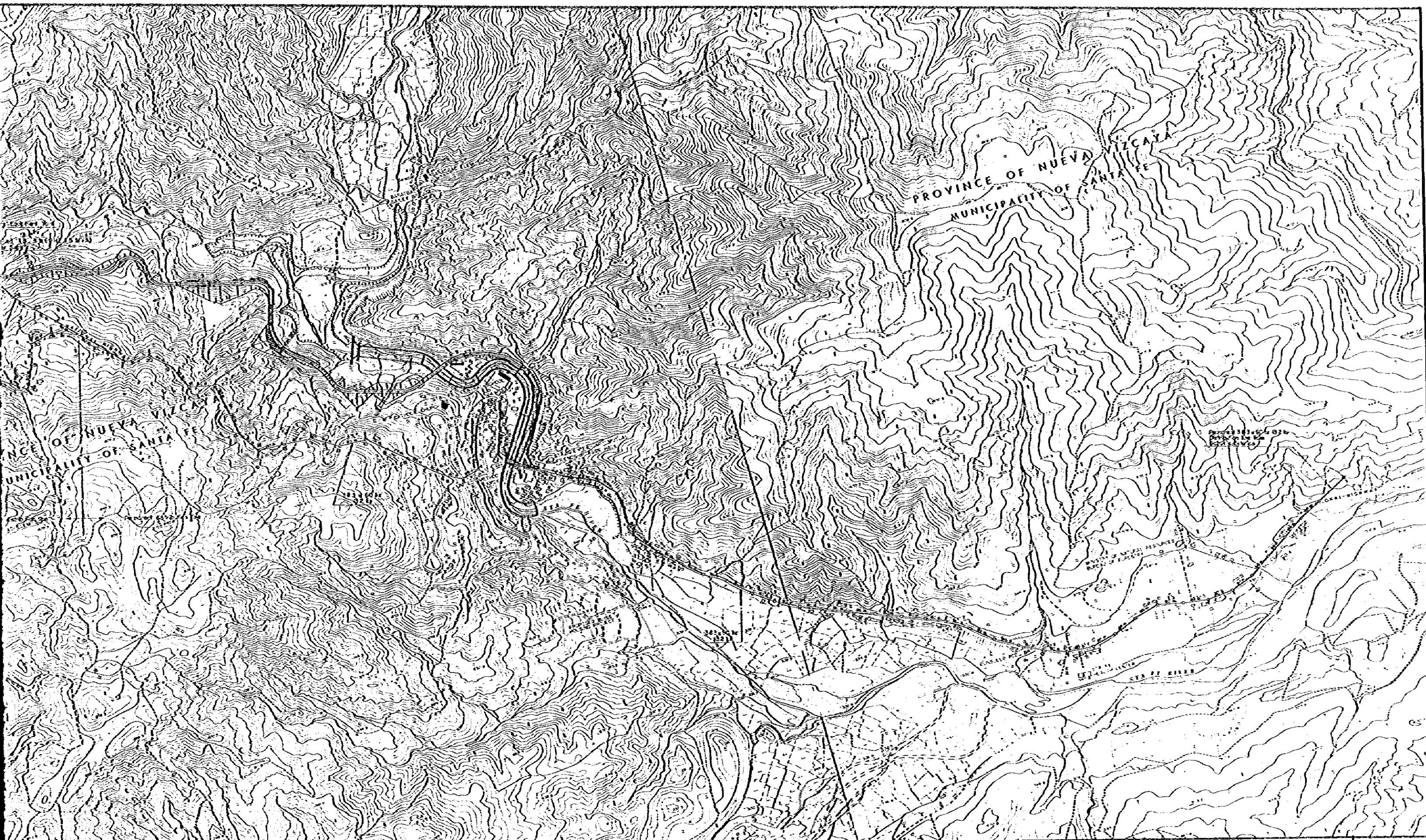
DRAWING NO.

FS-30



JAPAN INTERNATIONAL COOPERATION AGENCY

DALTON PASS TUNNEL PROJECT
FEASIBILITY STUDY



DALTON PASS TUNNEL PROJECT
FEASIBILITY STUDY

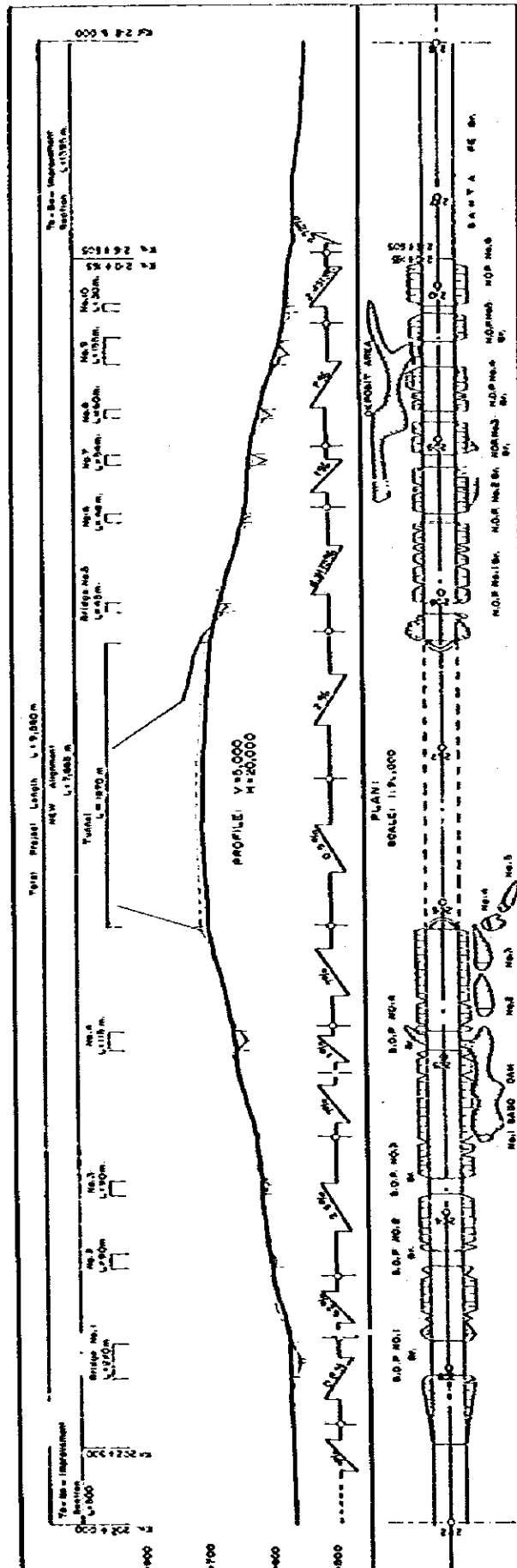
SECTION A - NEW ALIGNMENT ROUTE
LOCATION OF DISTRIBUTION LINE OF TUNNEL
FOR MOST LIKELY ROUTE

SCALE 1:5000

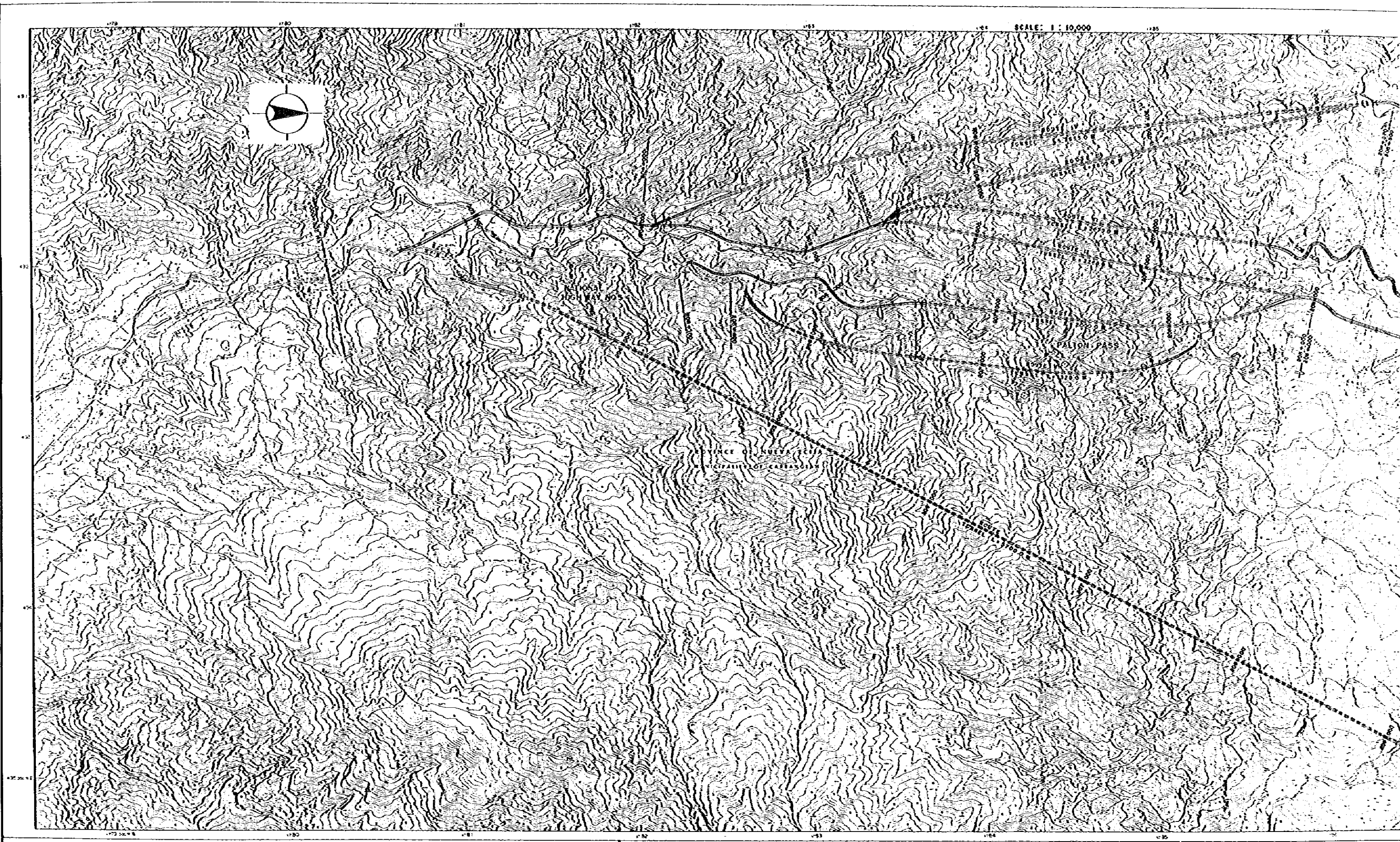
DATE: MAR '82

DRAWING NO.
FS-31

CONSTRUCTION SCHEDULE



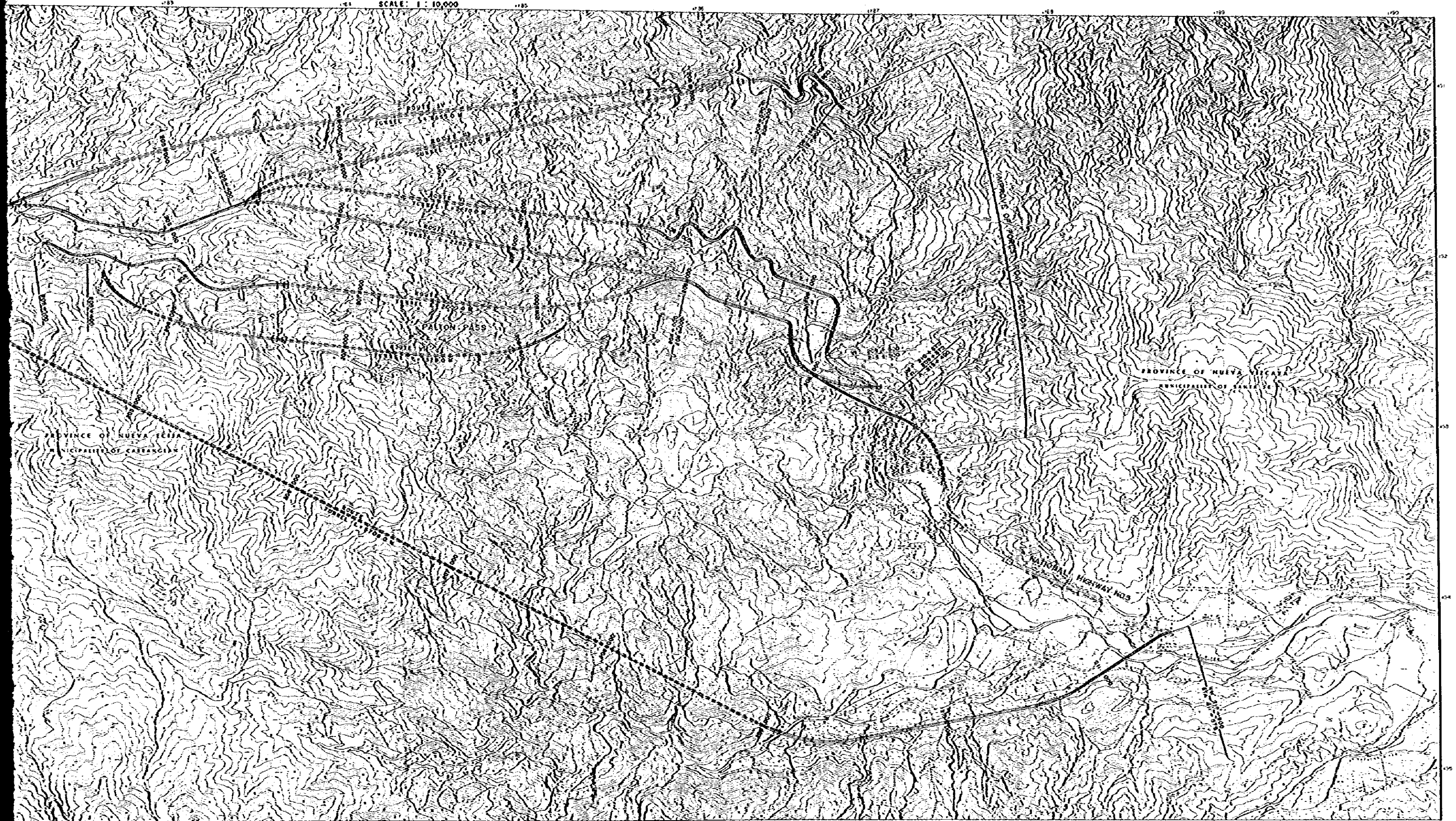
ITEMS	QUANTITIES	CONSTRUCTION SCHEDULE				
		FIRST YEAR	SECOND YEAR	THIRD YEAR	FOURTH YEAR	FIFTH YEAR
SABO AND CHANNEL WORK	V=4900m ³ L=800m	[Gantt bar spanning Year 1 to Year 2]				
BRIDGE WORK	SANTA FE	[Gantt bar spanning Year 1 to Year 2]				
	NDP NO 6	[Gantt bar spanning Year 1 to Year 2]				
	NDP NO 5	[Gantt bar spanning Year 1 to Year 2]				
	NDP NO 4	[Gantt bar spanning Year 1 to Year 2]				
	NDP NO 3	[Gantt bar spanning Year 1 to Year 2]				
NDP NO 2	[Gantt bar spanning Year 1 to Year 2]					
EARTH WORK	155590m ³	[Gantt bar spanning Year 1 to Year 2]				
CONCRETE PAVEMENT	5430m ³	[Gantt bar spanning Year 1 to Year 2]				
OTHERS		[Gantt bar spanning Year 1 to Year 2]				
TEMPORARY APPROACH	L=2000m	[Gantt bar spanning Year 1 to Year 2]				
TUNNEL WORK	L=935m	[Gantt bar spanning Year 1 to Year 2]				
NDP NO 2 BRIDGE	A: ABUTMENT V=78m ³	[Gantt bar spanning Year 1 to Year 2]				
NDP NO 1 BRIDGE	RCC L=45m (@ 15)	[Gantt bar spanning Year 1 to Year 2]				
EARTH WORK	152250m ³	[Gantt bar spanning Year 1 to Year 2]				
CONCRETE PAVEMENT	660m ³	[Gantt bar spanning Year 1 to Year 2]				
OTHERS		[Gantt bar spanning Year 1 to Year 2]				
SABO AND CHANNEL WORK	V=2400m ³	[Gantt bar spanning Year 1 to Year 2]				
TUNNEL WORK	L=335m	[Gantt bar spanning Year 1 to Year 2]				
BRIDGE WORK	SDP NO 4	[Gantt bar spanning Year 1 to Year 2]				
	SDP NO 3	[Gantt bar spanning Year 1 to Year 2]				
	SDP NO 2	[Gantt bar spanning Year 1 to Year 2]				
EARTH WORK	V=7870m ³	[Gantt bar spanning Year 1 to Year 2]				
CONCRETE PAVEMENT	V=2340m ³	[Gantt bar spanning Year 1 to Year 2]				
TEMPORARY APPROACH	L=400m	[Gantt bar spanning Year 1 to Year 2]				
OTHER		[Gantt bar spanning Year 1 to Year 2]				
BRIDGE WORK	S.D.P. NO 2	[Gantt bar spanning Year 1 to Year 2]				
	S.P.P. NO 1	[Gantt bar spanning Year 1 to Year 2]				
EARTH WORK	V=36717m ³	[Gantt bar spanning Year 1 to Year 2]				
CONCRETE PAVEMENT	V=2215m ³	[Gantt bar spanning Year 1 to Year 2]				
OTHER		[Gantt bar spanning Year 1 to Year 2]				



JAPAN INTERNATIONAL COOPERATION AGENCY

DALTON PASS TUNNEL PROJECT
FEASIBILITY STUDY

SCALE: 1 : 10,000



DALTON PASS TUNNEL PROJECT
FEASIBILITY STUDY

SECTION A - NEW ALIGNMENT ROUTE
LOCATION OF ALTERNATIVE ROUTES
I TO VII

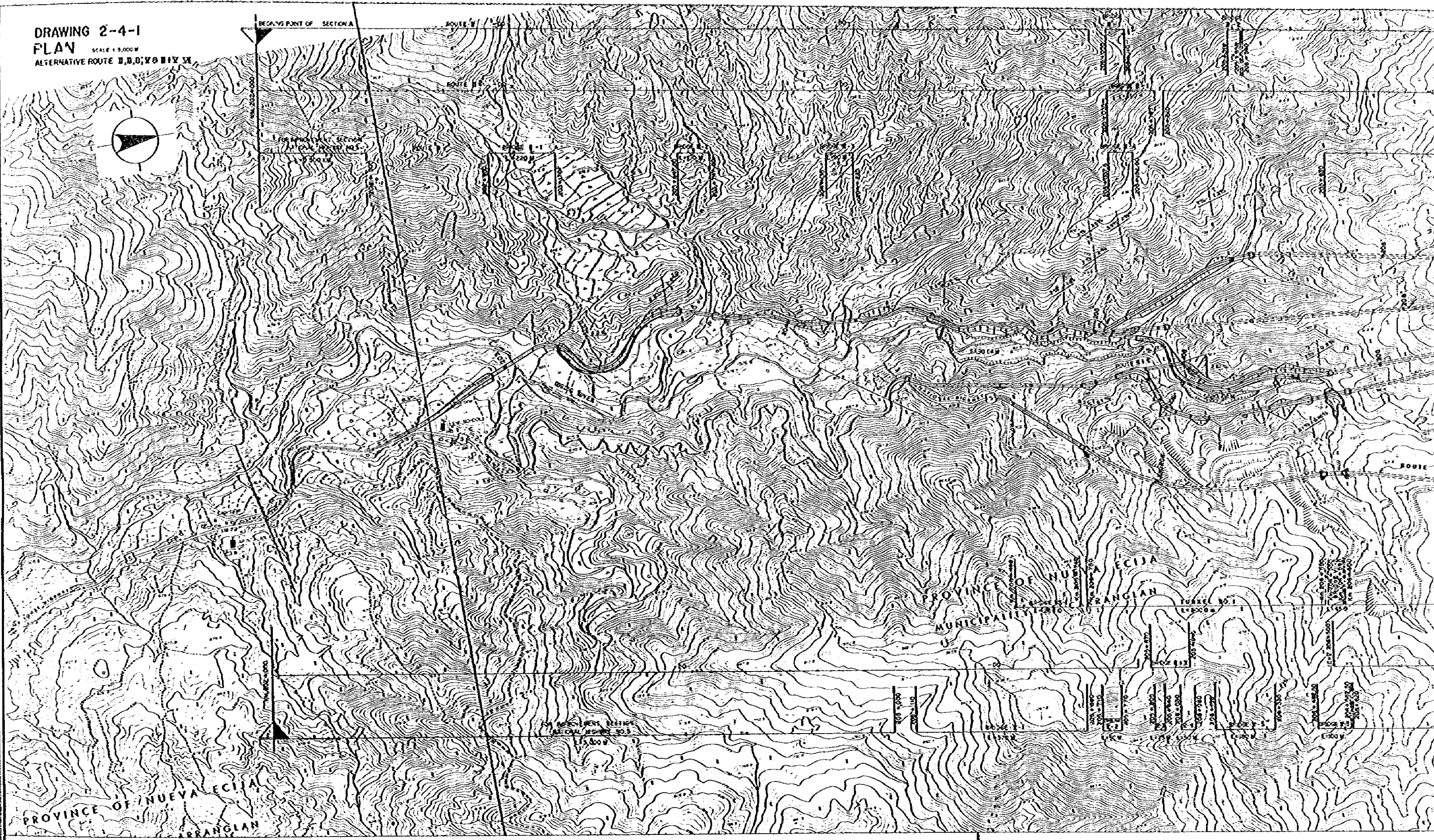
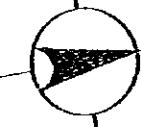
SCALE: 1:10,000

DATE: MAR '82

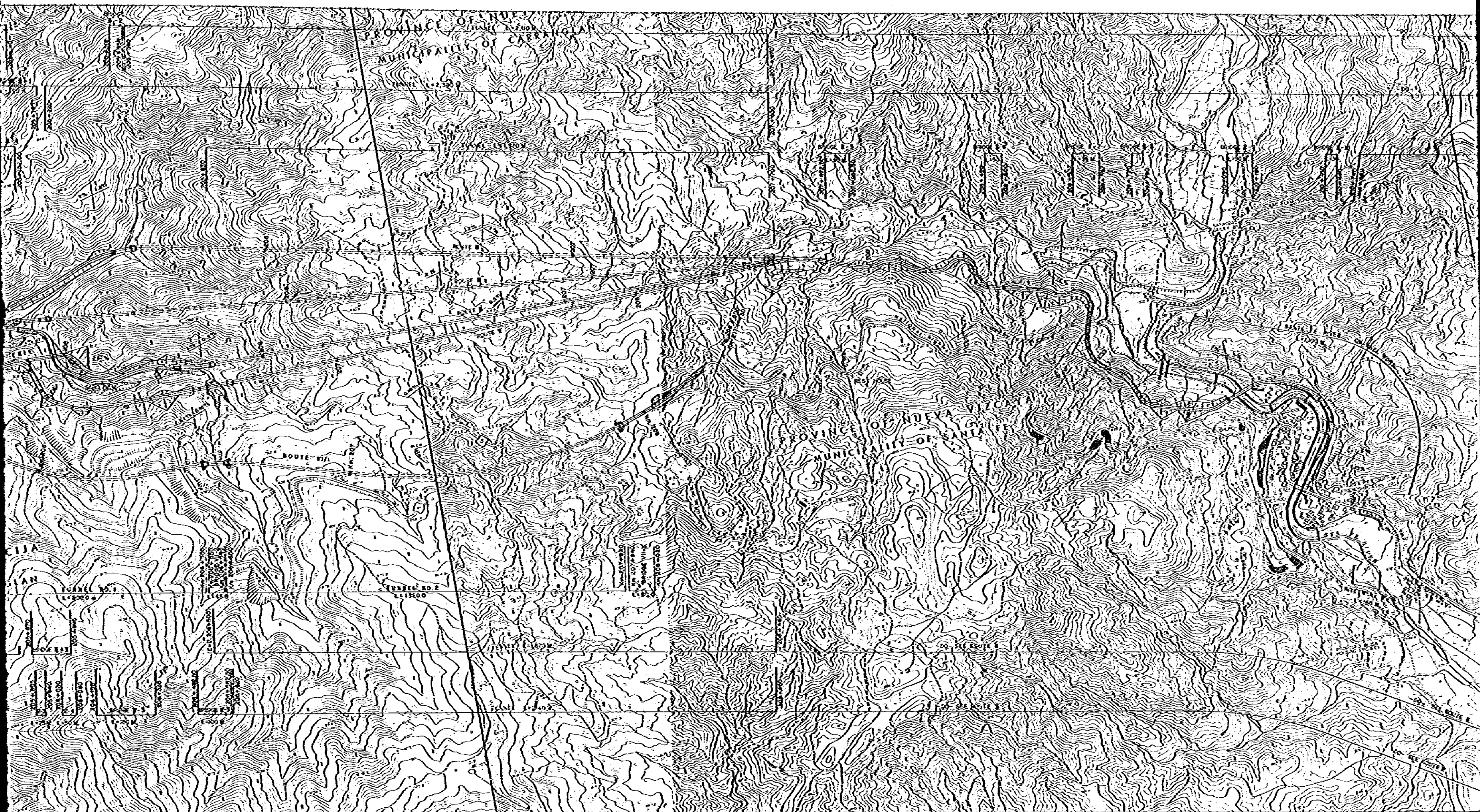
DRAWING NO.

FS-33

DRAWING 2-4-1
PLAN SCALE 1:5,000
ALTERNATIVE ROUTE D, B, D, X & B I X

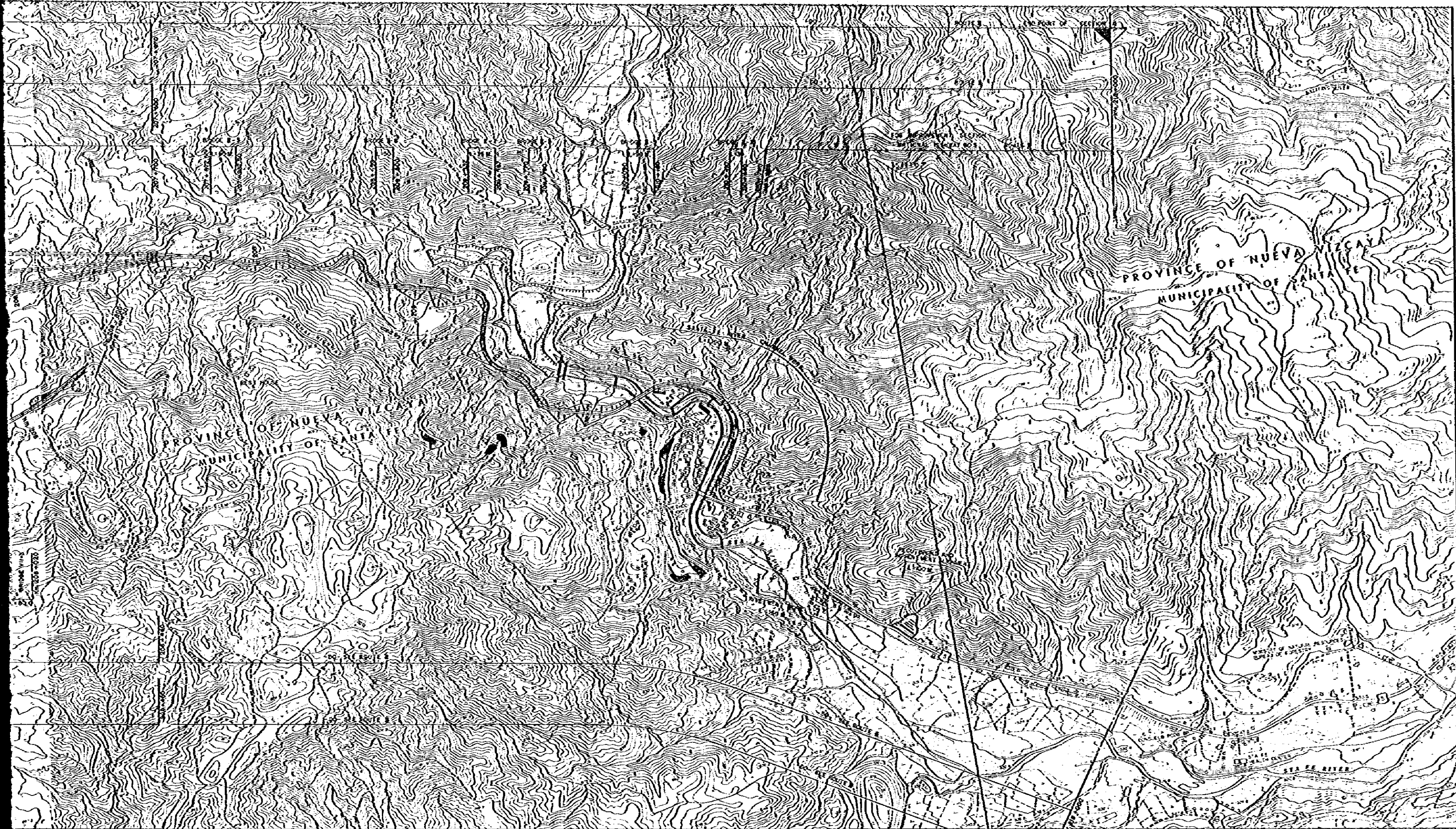


JAPAN INTERNATIONAL COOPERATION AGENCY



DALTON PASS TUNNEL PROJECT
FEASIBILITY STUDY

SECTION A - NEW ALIGNMENT ROUTE
PLAN FOR ALTERNATIVE ROUTE
II, II', II', V II + V & VII

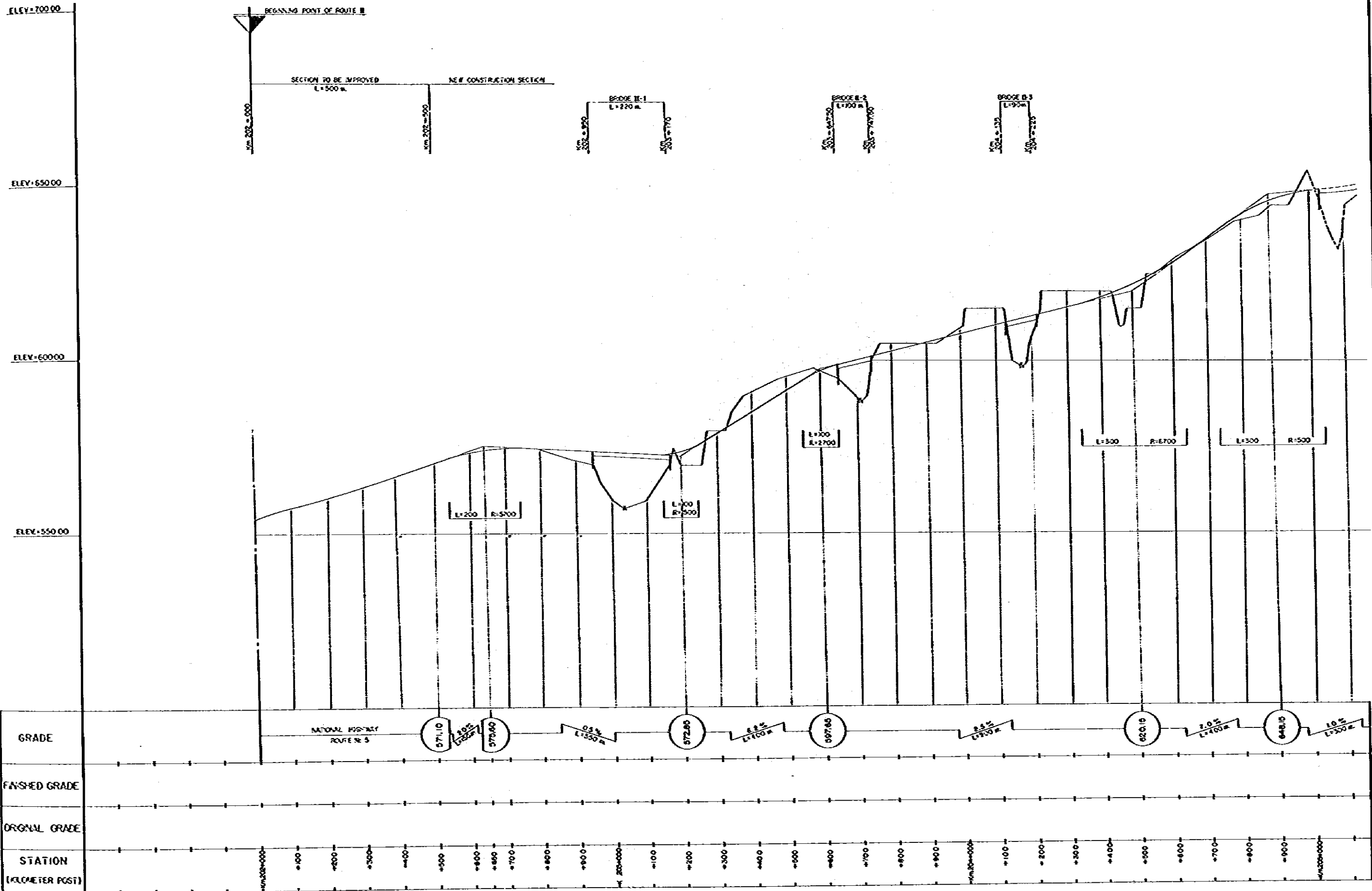


SECTION A - NEW ALIGNMENT ROUTE
PLAN FOR ALTERNATIVE ROUTE
II, II', II'', V II + V & VII

DRAWING NO.

FS-34

DATE: MAR '82

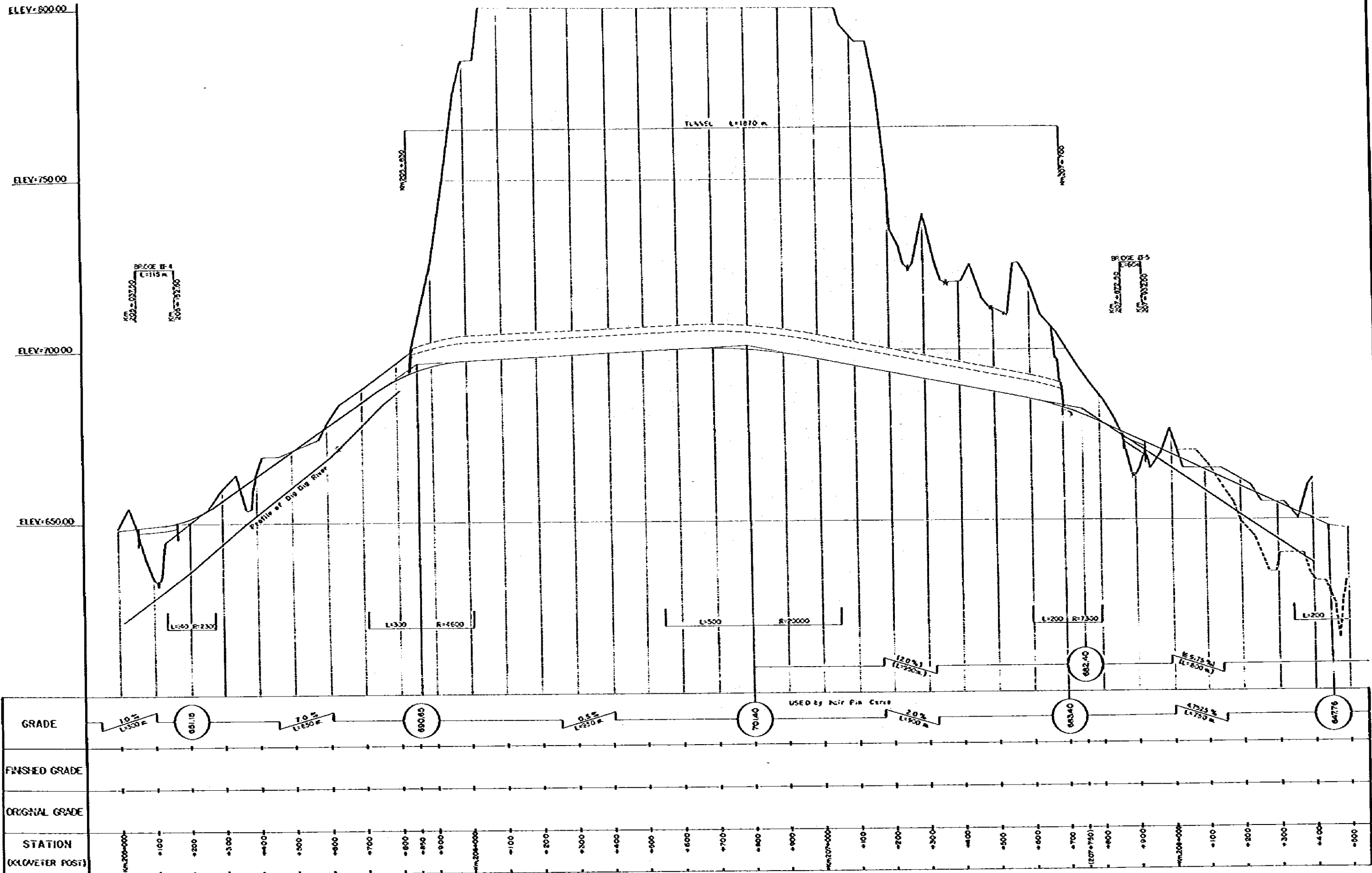


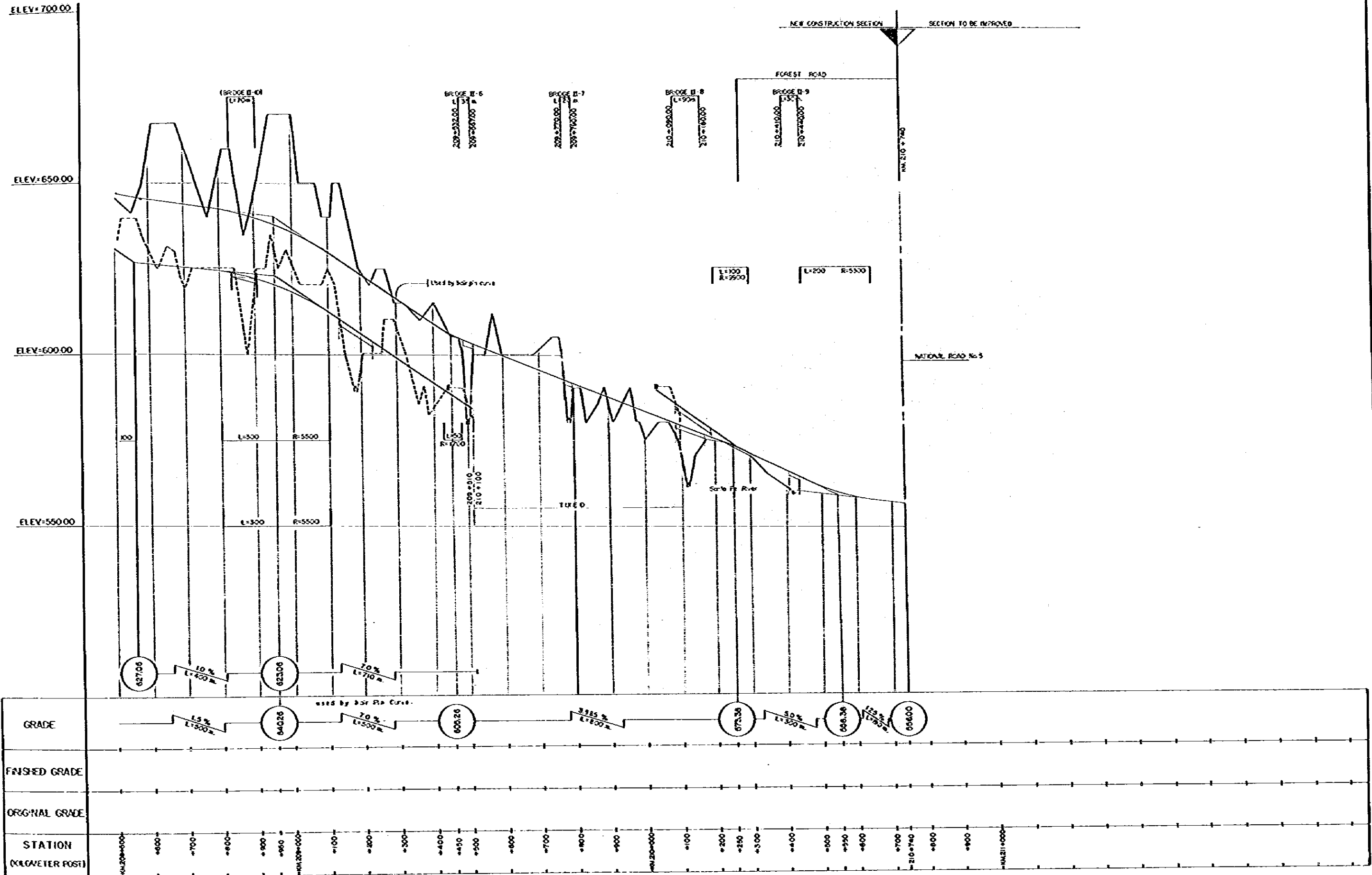
JAPAN INTERNATIONAL COOPERATION AGENCY

DALTON PASS TUNNEL PROJECT
FEASIBILITY STUDY

SECTION A - NEW ALIGNMENT ROUTE
PROFILE FOR ALTERNATIVE ROUTE II(1)
KM 202+00000 TO KM 205+00000
DATE: MAR '82

DRAWING NO.
FS-35





JAPAN INTERNATIONAL COOPERATION AGENCY

DALTON PASS TUNNEL PROJECT
FEASIBILITY STUDY

SECTION A - NEW ALIGNMENT ROUTE
PROFILE FOR ALTERNATIVE ROUTE II(3)

KM 208+50000 TO KM 211+00000

DATE MAR '82

DRAWING NO.

FS-37

