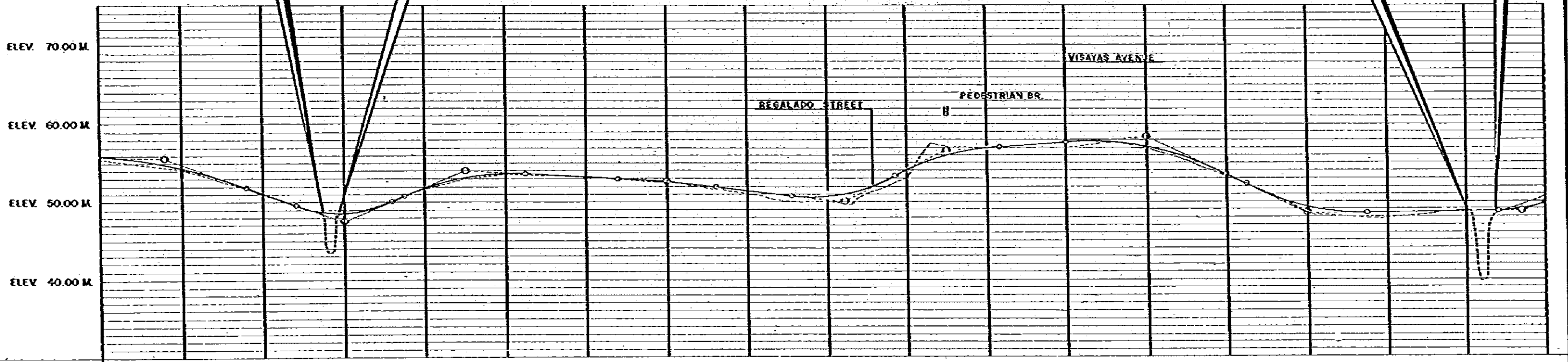
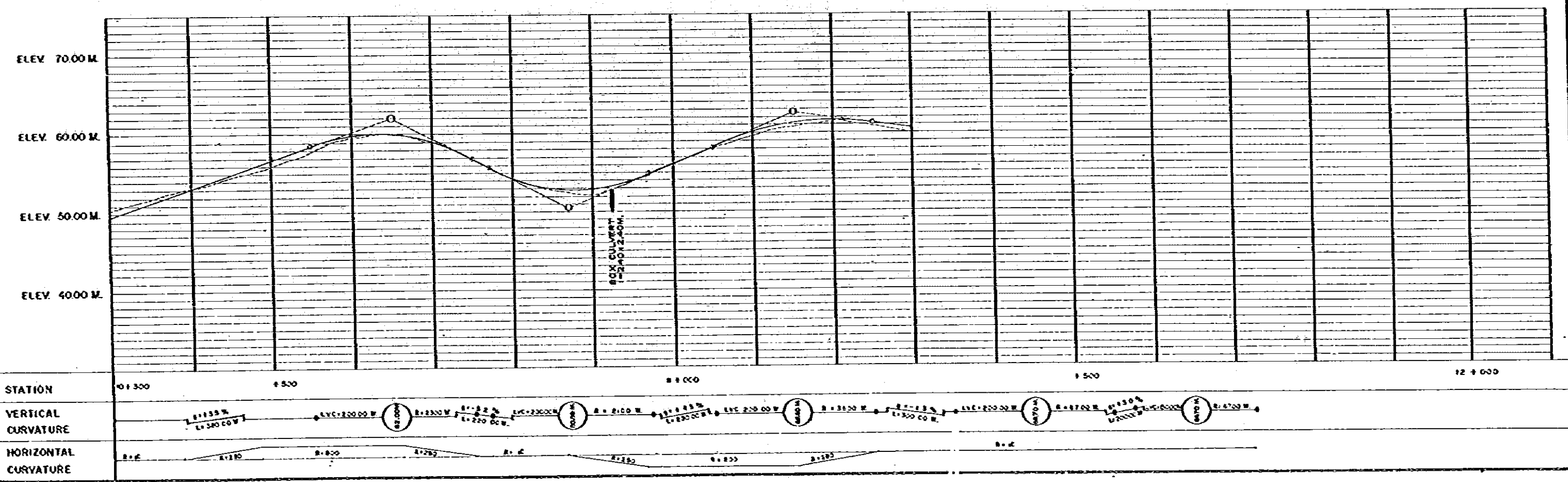
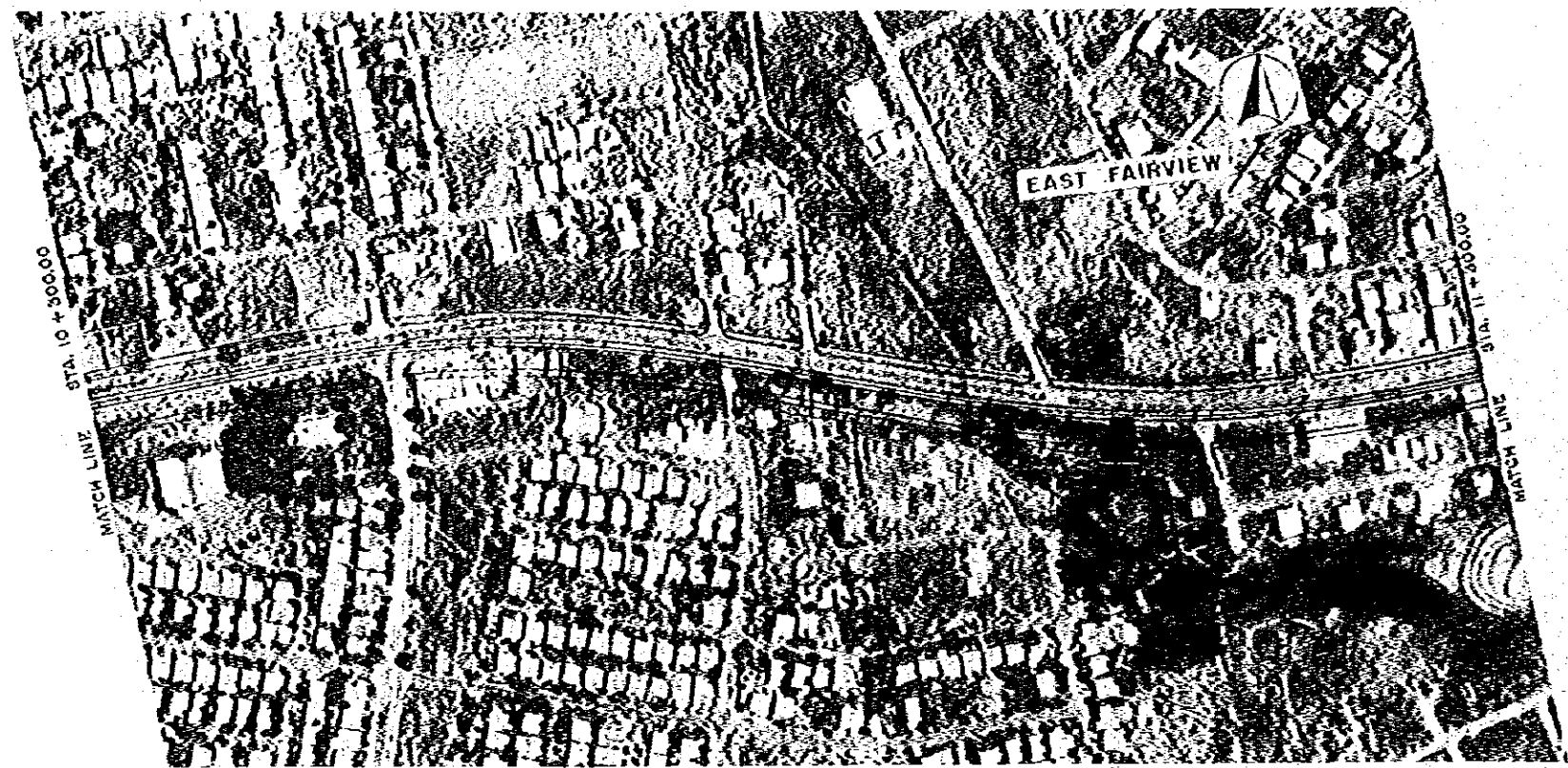


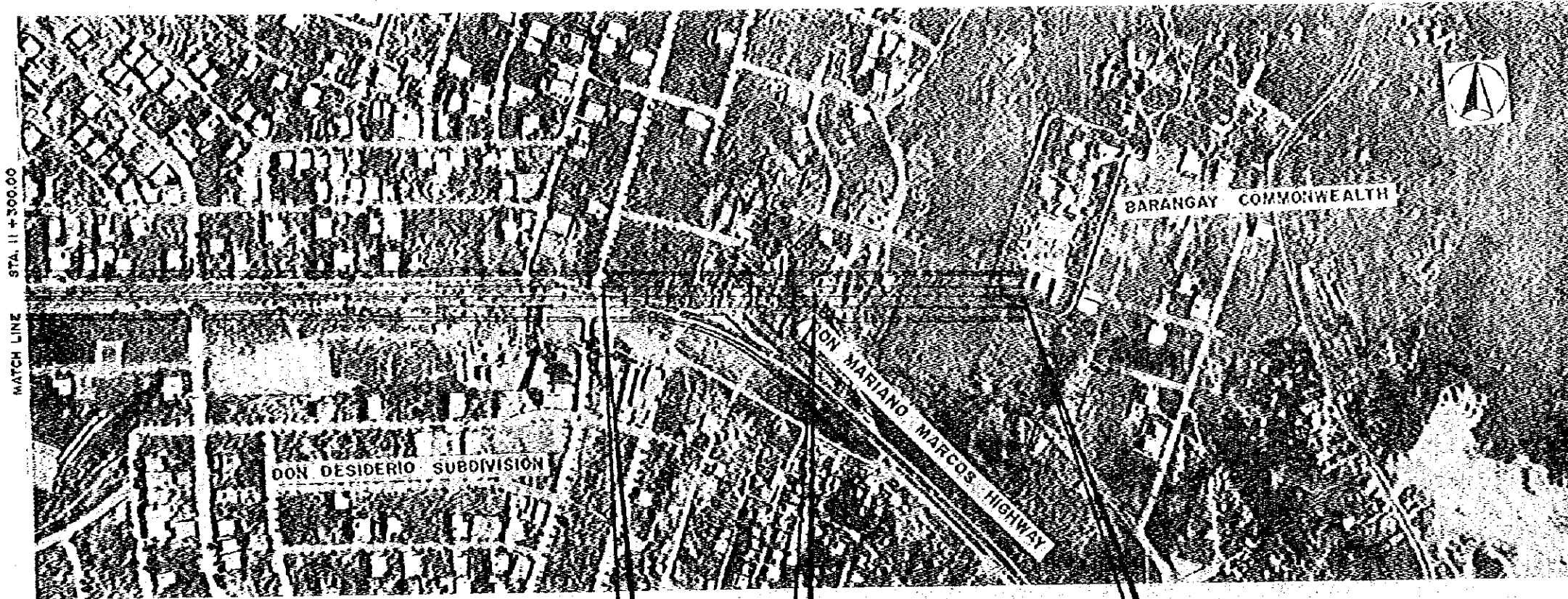
EXISTING BRIDGE NO. 1

EXISTING BRIDGE NO. 2



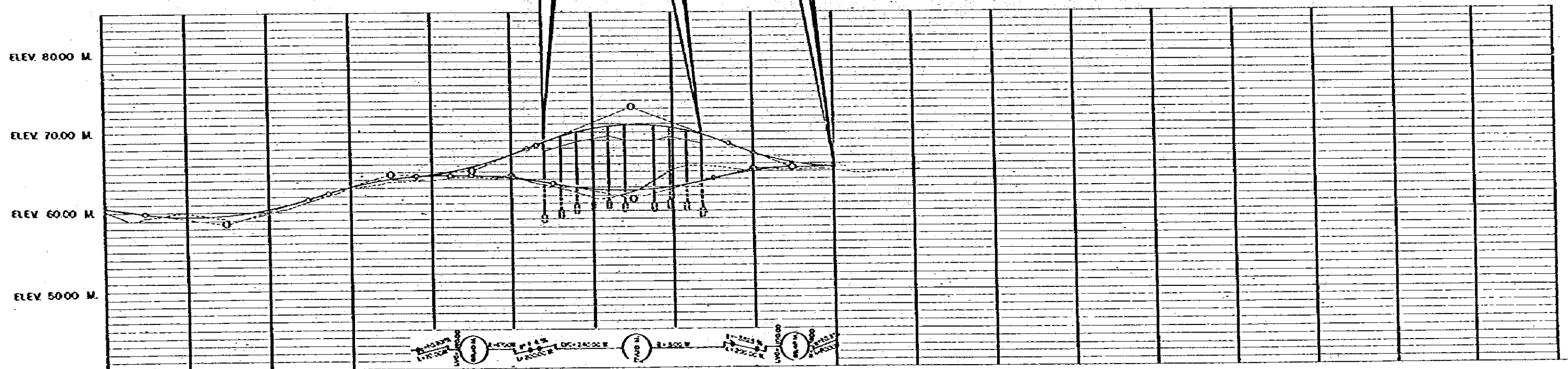
| | | | | | | | | | | | | | | | | | | | | |
|----------------------|---|-------|-------|-------|-------|-------|-------|-------|-------|-------|-------|-------|-------|-------|-------|--------|--------|--------|--------|--|
| STATION | 8+500 | 8+600 | 8+700 | 8+800 | 8+900 | 9+000 | 9+100 | 9+200 | 9+300 | 9+400 | 9+500 | 9+600 | 9+700 | 9+800 | 9+900 | 10+000 | 10+100 | 10+200 | 10+300 | |
| VERTICAL CURVATURE | <p>Vertical curve data including grades (e.g., -0.30%, -0.25%, -0.20%, -0.15%, -0.10%, -0.05%, 0.00%, 0.05%, 0.10%, 0.15%, 0.20%, 0.25%, 0.30%) and lengths (e.g., 120.00 M).</p> | | | | | | | | | | | | | | | | | | | |
| HORIZONTAL CURVATURE | <p>Horizontal curve data including radii (e.g., R=200, R=250, R=300, R=350, R=400, R=450, R=500, R=550, R=600, R=650, R=700, R=750, R=800, R=850, R=900, R=950, R=1000, R=1050, R=1100, R=1150, R=1200).</p> | | | | | | | | | | | | | | | | | | | |





NAME: BRIDGE NO. 4
TYPE: P.C. COMPOSITE
LENGTH: 197.920 M.

END OF CONSTRUCTION

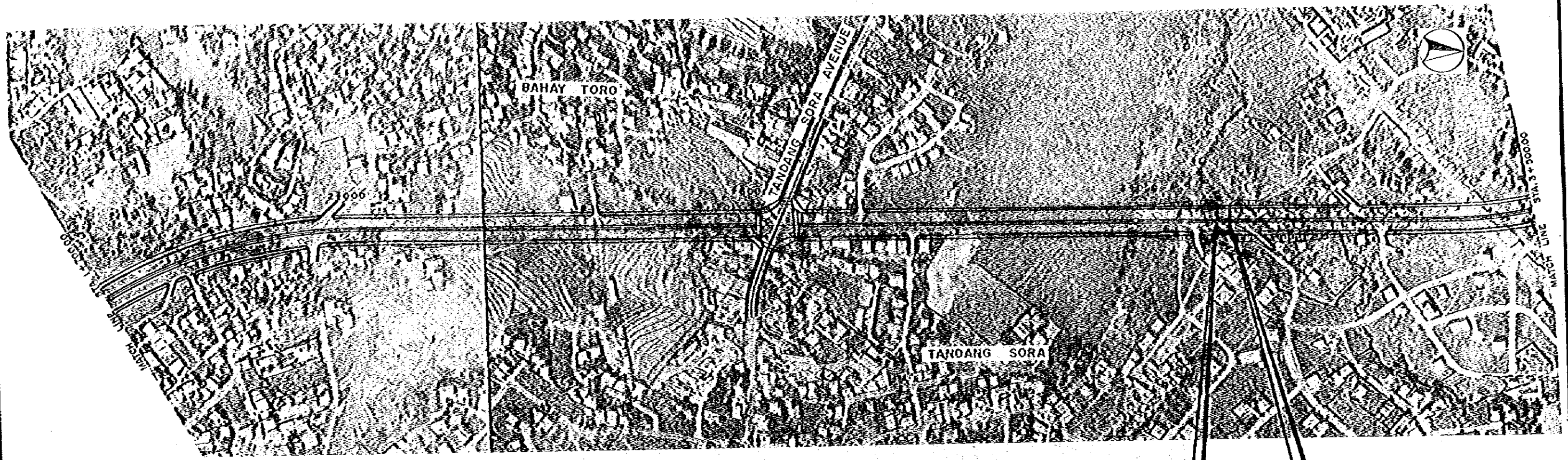


| | | | | |
|----------------------|--------|-------|--------|--------|
| STATION | 11+300 | + 500 | 12+000 | 12+200 |
| VERTICAL CURVATURE | | | | |
| HORIZONTAL CURVATURE | | | | |

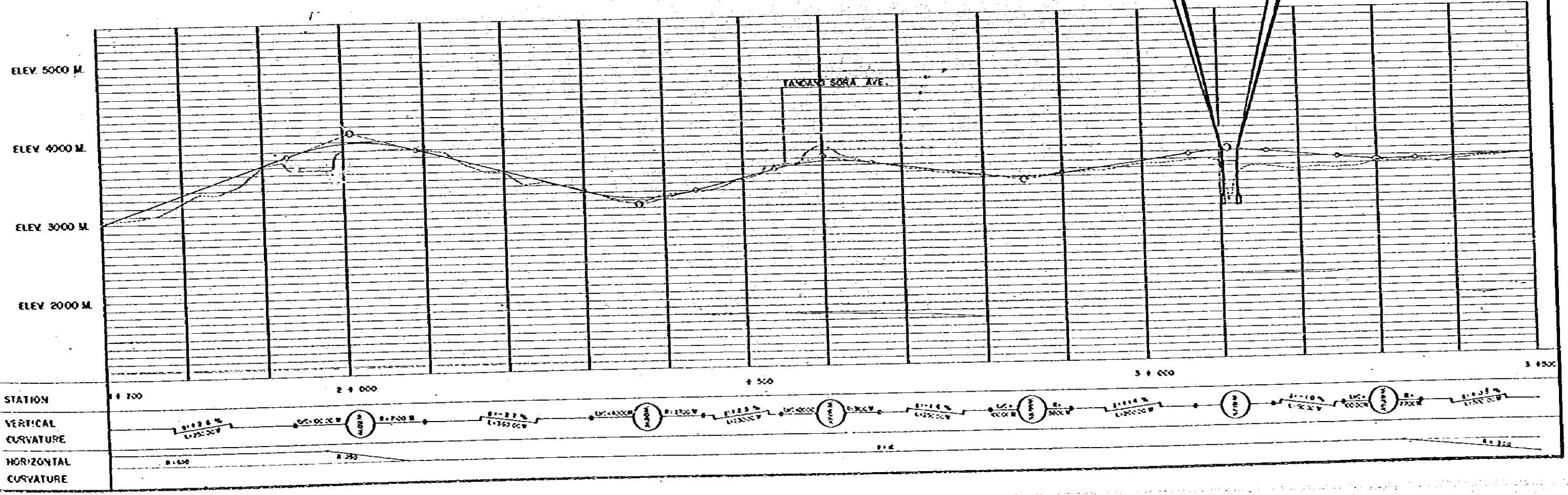
SCALE
HOR. 1:5000 M.
VERT. 1:500 M.

PLAN AND PROFILE
MINDANAO AVENUE
STA. 1+700.00 - STA. 3+800.00

23/66

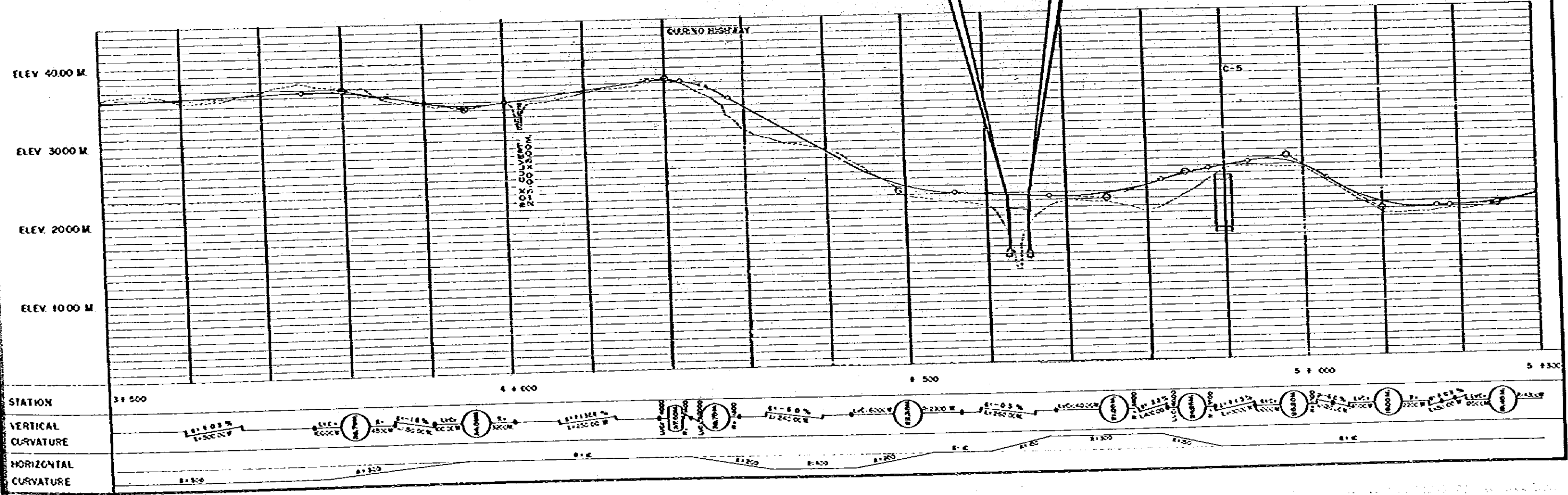


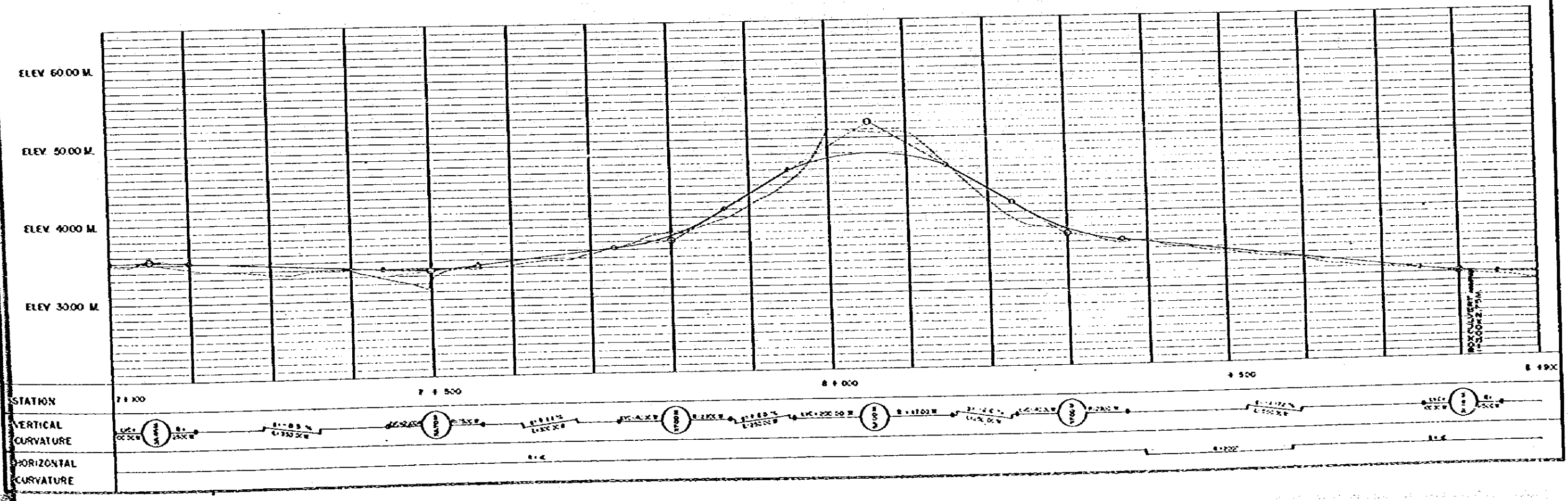
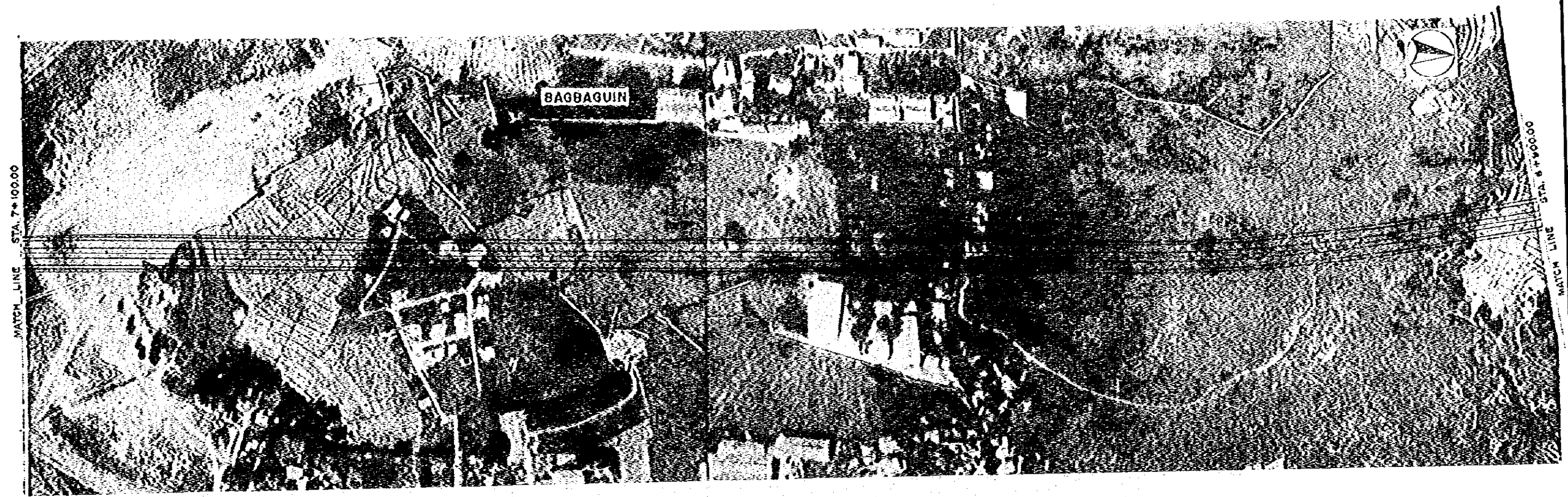
NAME: BRIDGE NO. 3
TYPE: P.C. COMPOSITE
LENGTH: 17.66 M.





NAME: BRIDGE NO. 4
 TYPE: P.C. COMPOSITE
 LENGTH: 26.670 M.

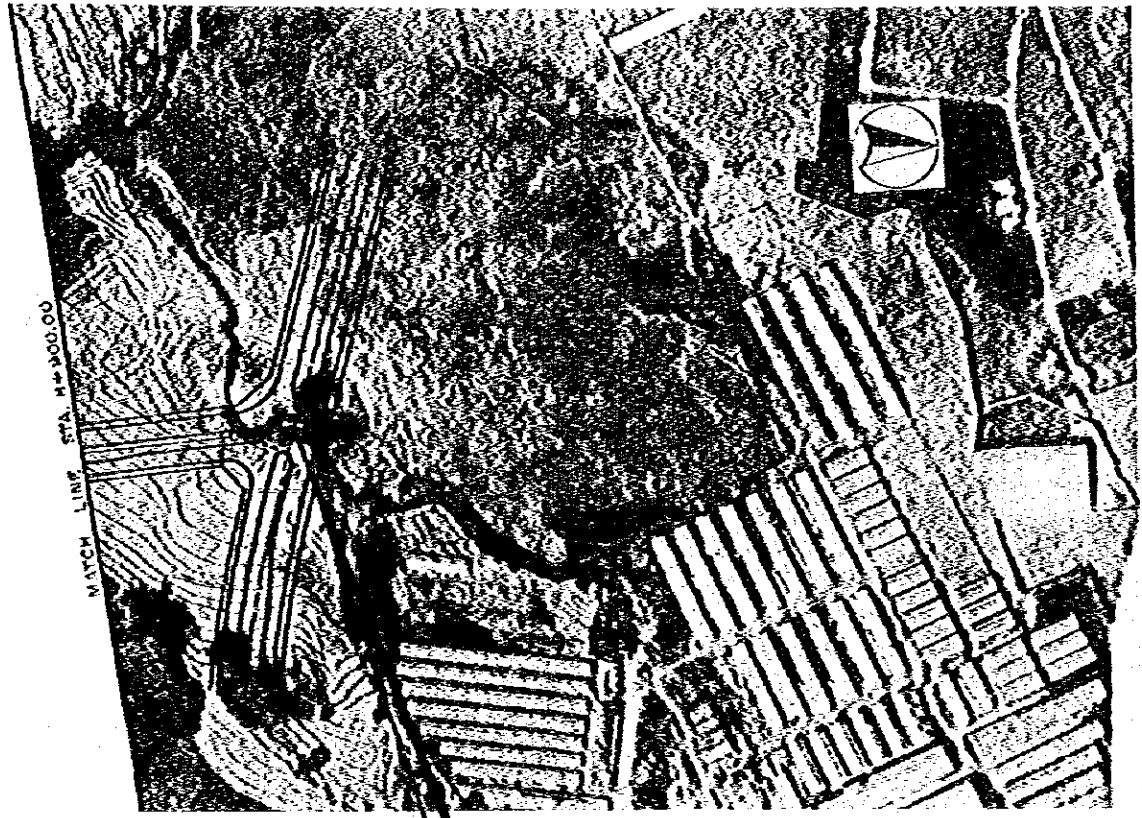




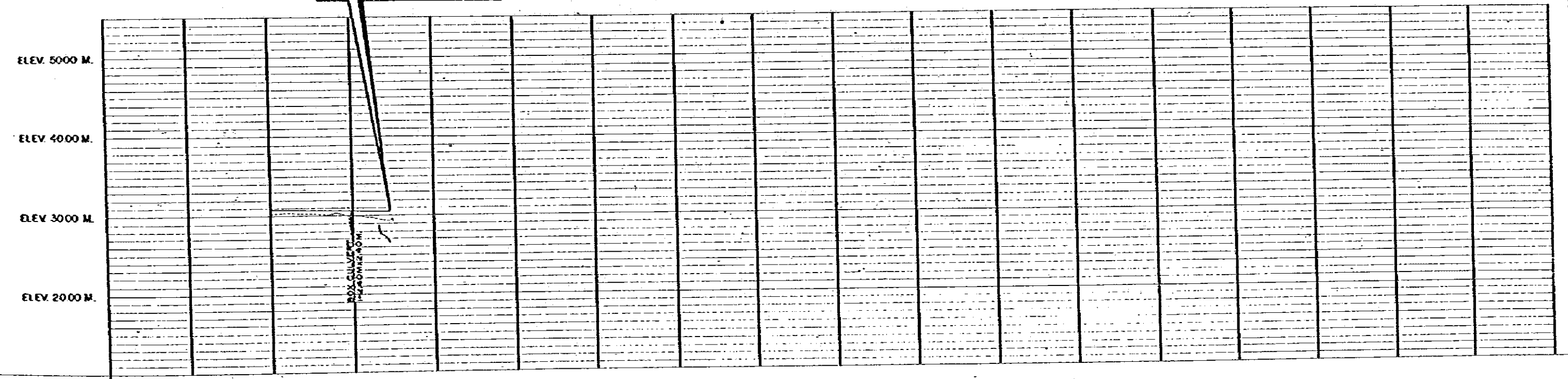
SCALE
HOR. 1:5000 M
VERT. 1:500 M

PLAN AND PROFILE
MINDANAO AVENUE
STA. 8 + 900.00 - STA. 9 + 045.00

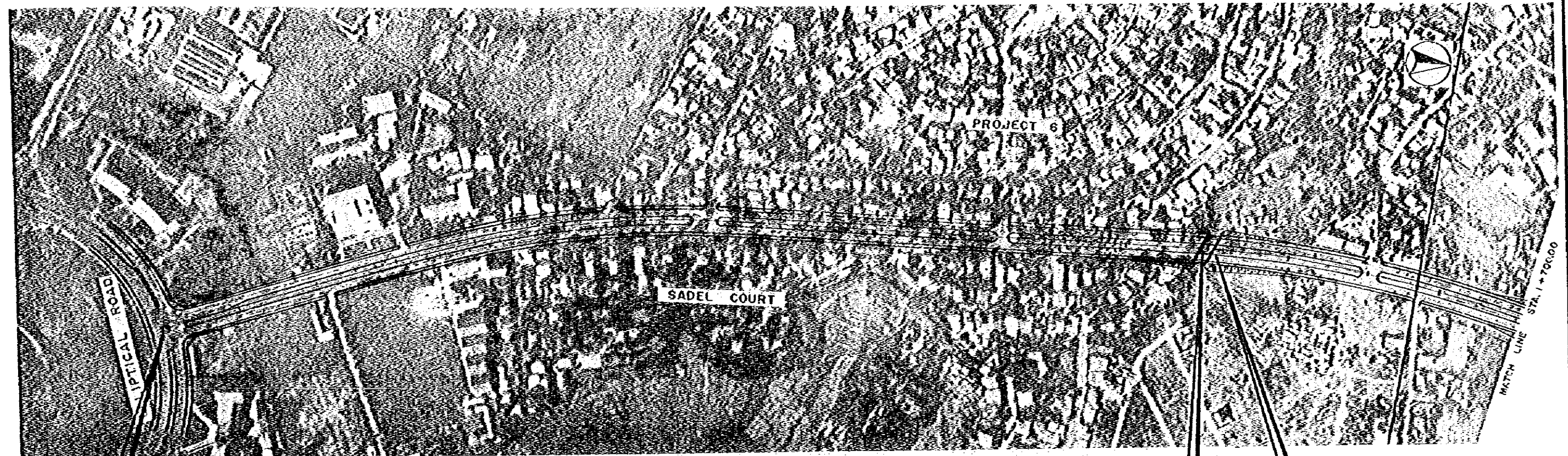
27'66



END OF CONSTRUCTION

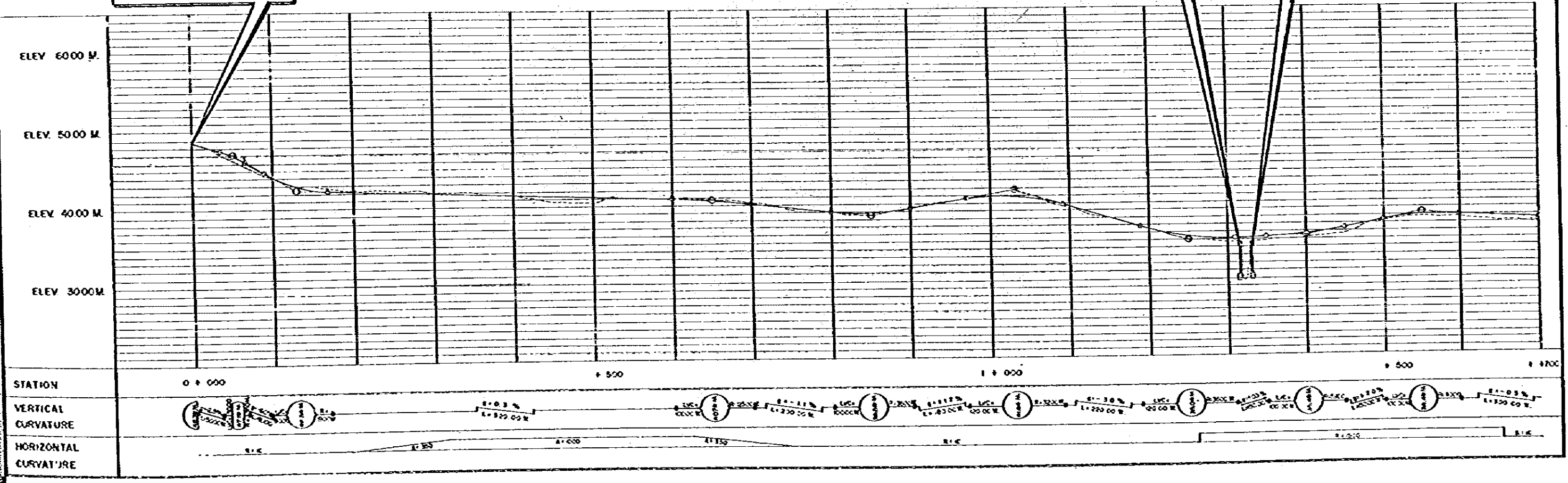


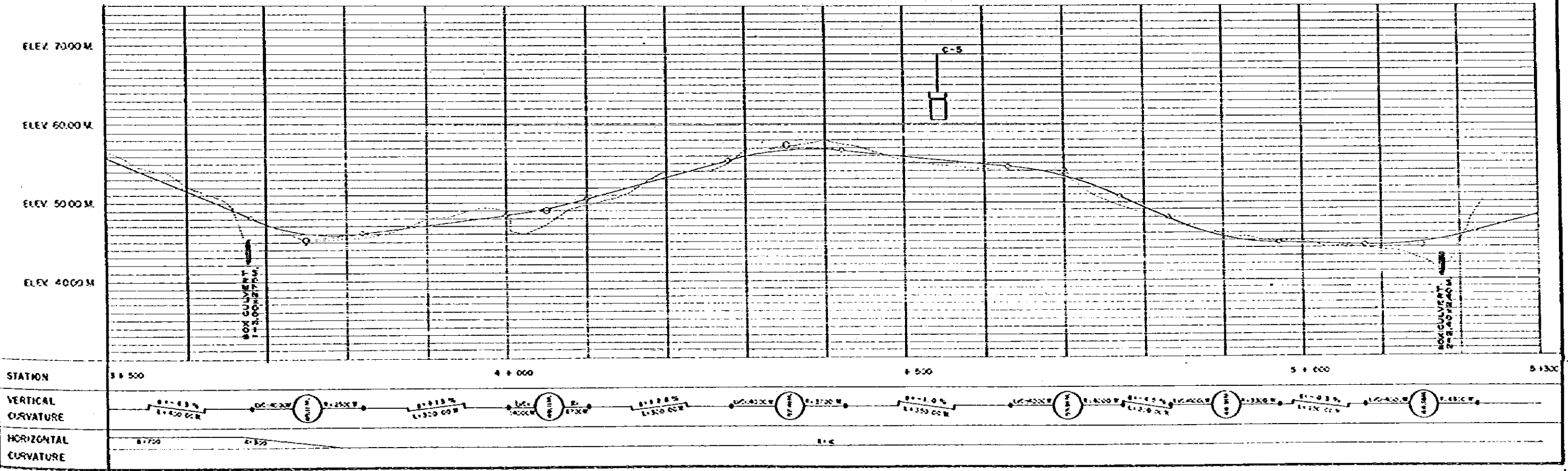
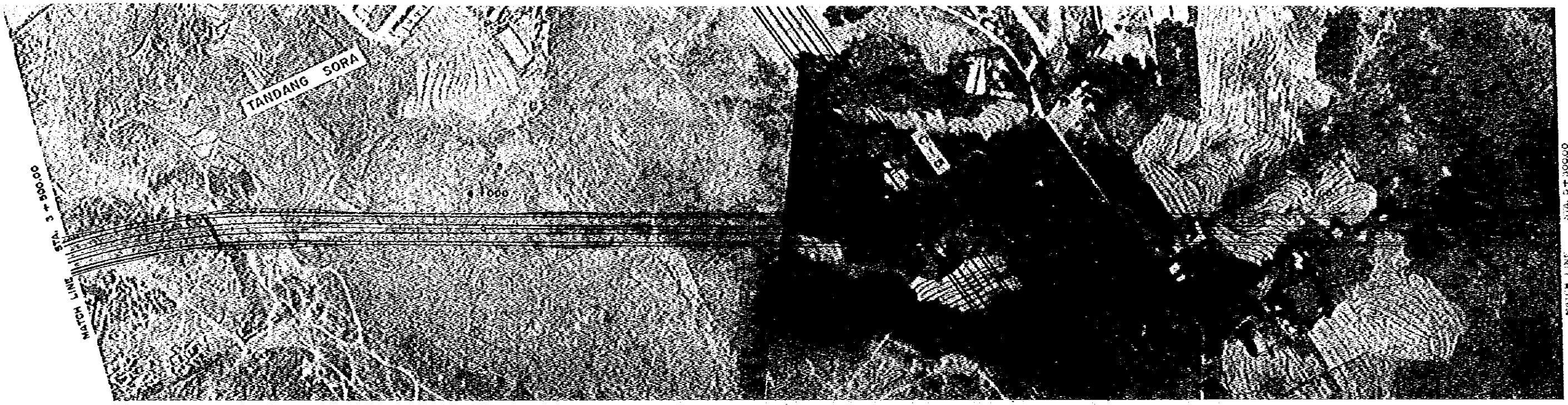
| | |
|----------------------|--------------------------------------|
| STATION | 8 + 900 9 + 000 9 + 045.00 |
| VERTICAL CURVATURE | |
| HORIZONTAL CURVATURE | |

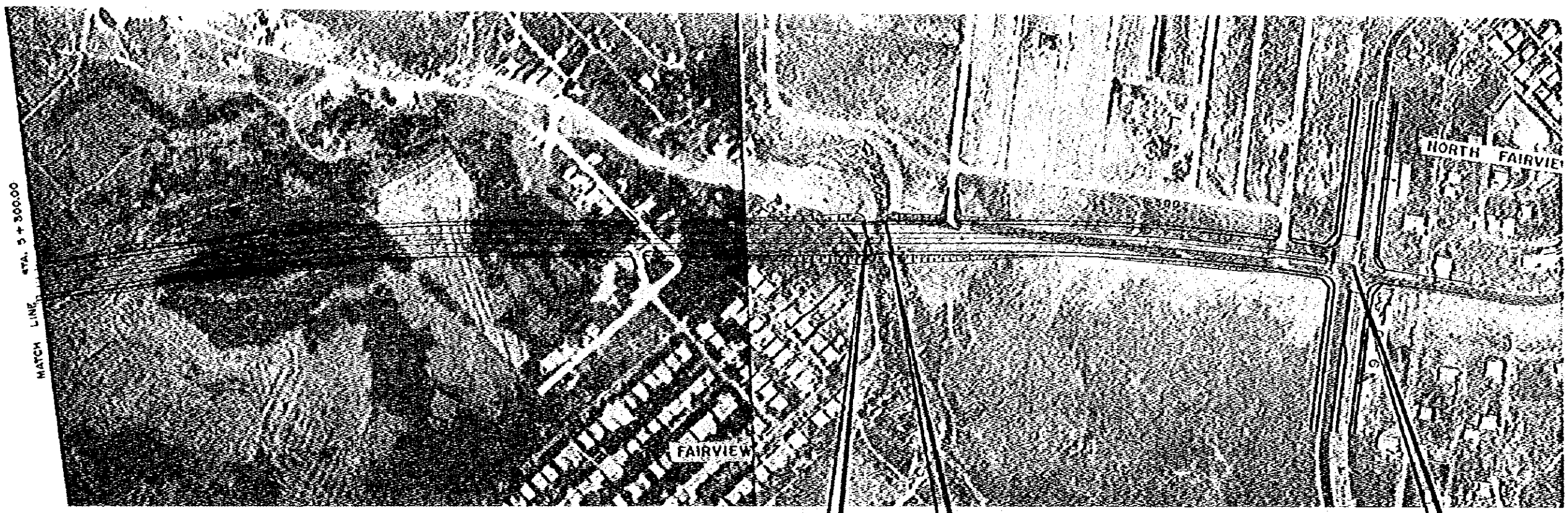


BEGINNING OF CONSTRUCTION

NAME: BRIDGE NO. 1
 TYPE: P.C. COMPOSITE
 LENGTH: 15.722 M.







NAME: BRIDGE NO. 3
 TYPE: P.C. COMPOSITE
 LENGTH: 15.722 M.

END OF CONSTRUCTION

