

フィリピン共和国

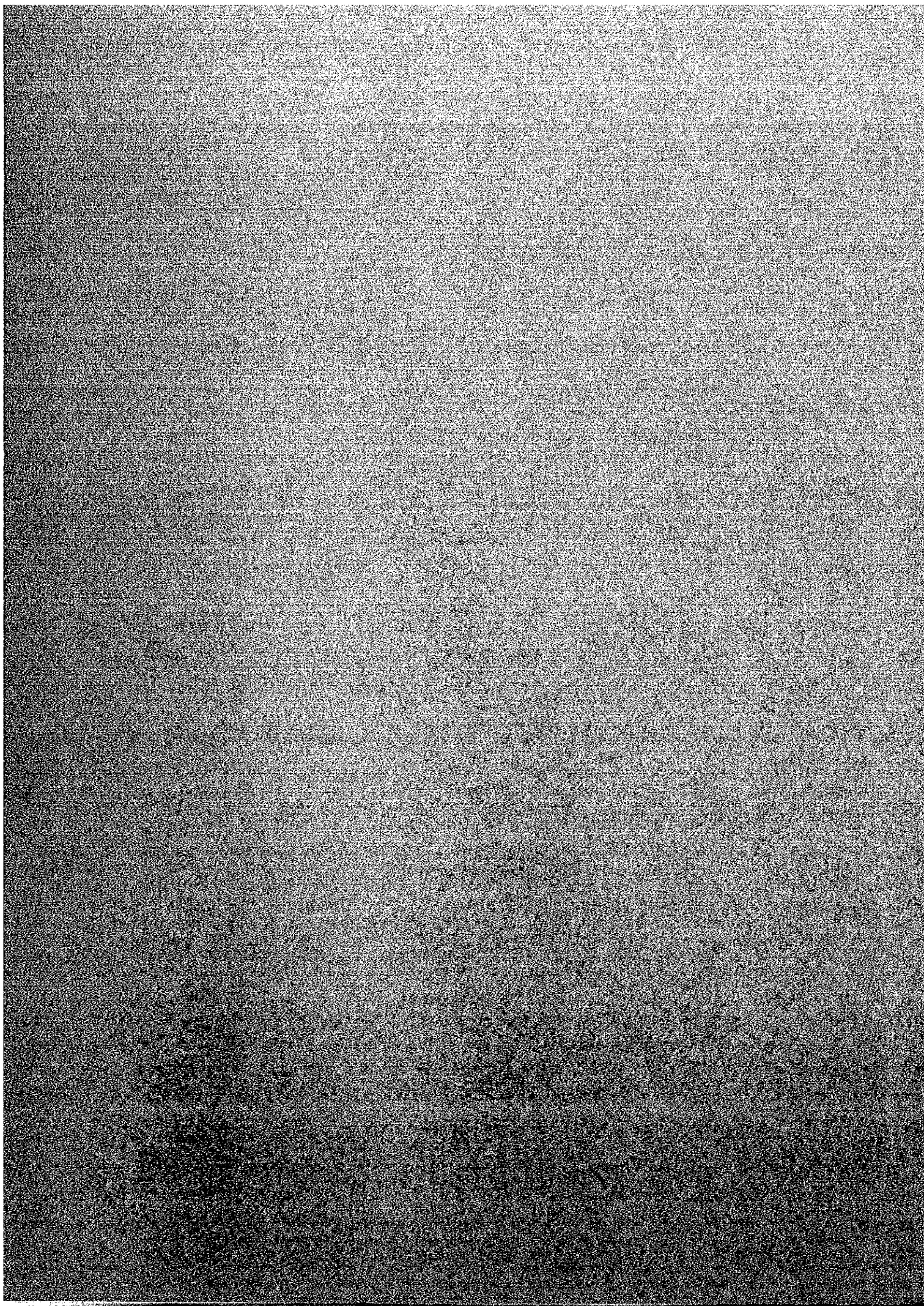
マニラ首都圏南部地区幹線道路網

計画調査報告書

資料編

昭和57年 3月

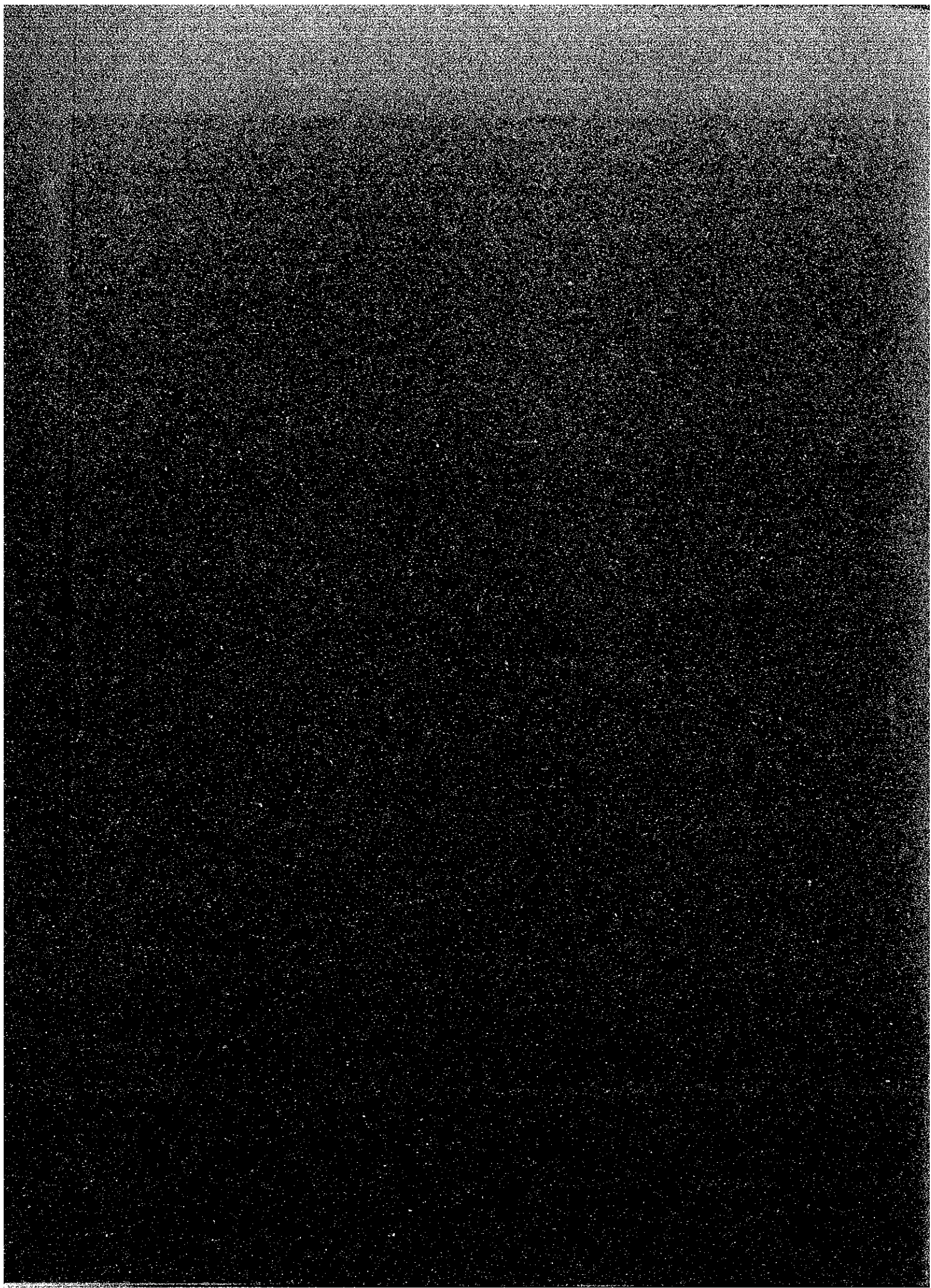
国際協力事業団



JICA LIBRARY



1031506[7]



フィリピン共和国

マニラ首都圏南部地区幹線道路網

計画調査報告書

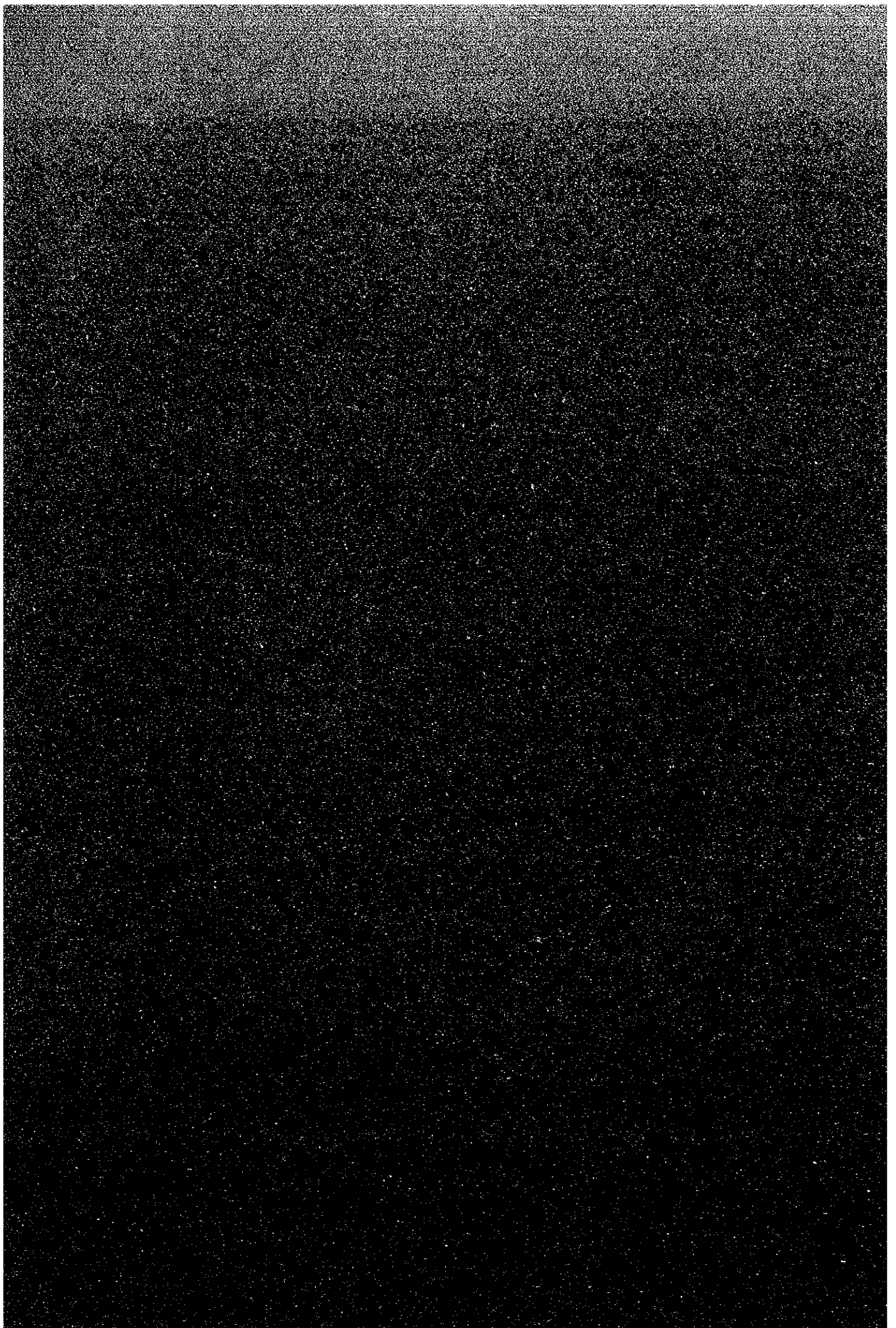
資料編

昭和57年3月

国際協力事業団

國際協力事業団		
受入 月日	'84. 8. 24	118
登録No.	13954	614 SDF

CONTENTS FOR APPENDIXES



CONTENTS FOR APPENDIXES

<u>Table/Fig.</u>	<u>Title</u>	<u>Page</u>
<u>APPENDIXES FOR CHAPTER 2</u>		
APP. TABLE 2.1-1	MAJOR ECONOMIC PERFORMANCES IN PHILIPPINES	A2-1, A2-2
APP. TABLE 2.2-1	POPULATION STATISTICS	A2-3
APP. TABLE 2.2-2	POPULATION FORECASTS	A2-4
<u>APPENDIXES FOR CHAPTER 3</u>		
APP. TABLE 3.2-1	POPULATION BY MUNICIPALITY IN THE DIZ	A3-1
APP. TABLE 3.2-2	ALTERNATIVE PHASES OF DEVELOPMENT IN THE DIZ	A3-2
APP. NOTE 3.1	CHARACTERISTICS OF THE CONCEPTUAL DEVELOPMENT PATTERNS	A3-3
APP. NOTE 3.2	CHARACTERISTICS OF BLOCKS A THROUGH G IN RESPECT TO THE DEVELOPMENT PATTERNS	A3-4 thru A3-8
APP. FIG. 3.3-1	PROVISIONAL LAND USE PLAN FOR RECLAMATION OF MANILA-CAVITE	A3-8
APP. FIG. 3.4-2	POPULATION DENSITY AND DISTANCE FROM MANILA	A3-9
APP. FIG. 3.4-3	STAGES OF POPULATION GROWTH BY MUNICIPALITY ALONG THE LOGISTIC CURVE	A3-10
APP. FIG. 3.4-4	DISTRIBUTION OF POPULATION DENSITY BY ZONE: 1980, 1990 AND 2000	A3-11
APP. NOTE 3.3	EMPLOYMENT OPPORTUNITIES	A3-12 thru
APP. FIG. 3.5-1	GREATER METRO AREA	A3-16
APP. TABLE 3.5-1	THE RATIO OF EMPLOYMENT OVER POPULATION ..	A3-13
APP. TABLE 3.5-2	POPULATION AND EMPLOYMENT IN GREATER METRO AREA	A3-13
APP. TABLE 3.5-3	CLASSIFIED EMPLOYED PERSONS BY WORKPLACE IN THE STUDY AREA	A3-14
APP. TABLE 3.5-4	ESTIMATE OF EMPLOYMENT BY ZONE 1980	A3-17
APP. TABLE 3.5-5	ESTIMATE OF EMPLOYMENT BY ZONE 1990	A3-18
APP. TABLE 3.5-6	ESTIMATE OF EMPLOYMENT BY ZONE 2000	A3-19
<u>APPENDIXES FOR CHAPTER 4</u>		
APP. TABLE 4.1-1	INVENTORY DATA OF EXISTING ROADS	A4-1
APP. FIG. 4.1-1	TYPICAL CROSS SECTION OF EXISTING ROAD	A4-2

<u>Table/Fig.</u>	<u>Title</u>	<u>Page</u>
APP. TABLE 4.2-1	REGISTERED VEHICLES, PHILIPPINES	A4-3
APP. TABLE 4.2-2	REGISTERED VEHICLES, REGIONS VI AND VI-A...	A4-3
APP. TABLE 4.2-3A	TRAFFIC VOLUME (AADT) ON MAJOR ROADS	A4-4
APP. TABLE 4.2-3B	TRAFFIC COMPOSITION BY VEHICLE TYPE	A4-5
APP. TABLE 4.2-4	TRAFFIC VOLUME (16 HR.) FROM THE SURVEY IN 1981	A4-6
APP. TABLE 4.2-5	DAILY TRAFFIC FACTOR	A4-7
APP. FIG. 4.2-1	TRAFFIC VOLUME (16 HR.) AT PARANAQUE INTERSECTION BY THE SURVEY IN 1981	A4-8
APP. FIG. 4.2-2	TRAFFIC VOLUME (16 HR.) AT ZAPOTE INTERSECTION BY THE SURVEY IN 1981	A4-9
APP. TABLE 4.2-6	ANNUAL AND MONTHLY CHANGES OF TRAFFIC ON THREE STATIONS ADJACENT TO THE PROJECT ROADS: ADT	A4-10
APP. TABLE 4.2-7	ANNUAL AND MONTHLY CHANGES OF TRAFFIC ON TWO CONTROL STATIONS IN MMA	A4-11
APP. TABLE 4.2-8	AVERAGE NUMBER OF PASSENGER PER VEHICLE ...	A4-12
APP. TABLE 4.2-9	TRIP-PURPOSE DISTRIBUTION	A4-13
APP. NOTE 4.1	TRIPS AND POPULATION	A4-14, A4-15
APP. FIG. 4.2-3	TRIPS AND POPULATION	A4-16
APP. FIG. 4.2-4	TRIPS AND EMPLOYMENT	A4-17
APP. TABLE 4.2-10	REGRESSION ANALYSIS: PARAMETERS AND CORRELATION COEFFICIENT	A4-18
APP. NOTE 4.2	TRIP LENGTH DISTRIBUTION	A4-19
APP. FIG. 4.2-5	TRIP LENGTH DISTRIBUTION	A4-20
APP. NOTE 4.3	TRAFFIC VOLUME AND ROAD CAPACITY IN 1981 ..	A4-21
APP. TABLE 4.2-11	ESTIMATED TRAFFIC CAPACITY OF THE EXISTING ROADS	A4-22
APP. FIG. 4.2-6	PEAK HOUR TRAFFIC VOLUME (Veh/hr) BY THE SURVEY IN 1981	A4-23
APP. TABLE 4.3-1	ZONE TABLE	A4-24 thru A4-27
APP. TABLE 4.3-2	OD INTERVIEW FIELD FORM - (A)	A4-28
APP. TABLE 4.3-3	OD INTERVIEW FIELD FORM - (B)	A4-28
APP. TABLE 4.3-4	SAMPLING RATE OF OD INTERVIEW	A4-29
APP. TABLE 4.3-5	WEEKLY VARIATION OF TRAFFIC	A4-30
APP. TABLE 4.3-6	ROADSIDE OD INTERVIEWING: FACTORS OF EXPANSION TO DAILY TRAFFIC (12 HOURS TO 24 HOURS)	A4-31, A4-32
APP. TABLE 4.3-7	SOURCES OF OD DATA AND ZONE PAIRS	A4-33
APP. TABLE 4.3-8	SOUTH EXPRESSWAY: CHANGES OF TRAFFIC, APRIL AND MAY 1978-81	A4-34

<u>Table/Fig.</u>	<u>Title</u>	<u>Page</u>
APP. TABLE 4.3-9	SOUTH EXPRESSWAY, NICHOLS PLAZA, CHANGES OF TRAFFIC BY MONTH, 1979	A4-34
APP. TABLE 4.3-10	VEHICLE COUNT-LUZON SOUTH EXPRESSWAY APRIL 19-25, 1981	A4-35
APP. FIG. 4.3-1	GRAVITY MODEL PARAMETERS	A4-36
 <u>APPENDIXES FOR CHAPTER 5</u>		
APP. TABLE 5.2-1	GROSS NATIONAL PRODUCT, NATIONAL INCOME AND GROSS DOMESTIC PRODUCT BY INDUSTRIAL ORIGIN, CY 1967-1979	A5-1
APP. TABLE 5.2-2	POPULATION OF THE PHILIPPINES	A5-1
APP. TABLE 5.2-3	POPULATION, GDP, GDP PER CAPITA AND RATIO OF INCREASE, 1970-1979	A5-2
APP. TABLE 5.2-4	RESUME OF MMETROPLAN: DEMOGRAPHY AND TRAFFIC	A5-3
APP. TABLE 5.3-1	ESTIMATE OF POPULATION BY ZONE	A5-4
APP. TABLE 5.3-2	ESTIMATED EMPLOYMENT BY ZONE 1980, 1990 AND 2000	A5-5
APP. TABLE 5.3-3	TRIP GENERATION MODEL FORMULAS	A5-6
 <u>APPENDIXES FOR CHAPTER 6</u>		
APP. TABLE 6.3-1	ROADS AND Q-V CURVES	A6-1
APP. TABLE 6.3-2	CAPACITY ANALYSIS FOR TRAFFIC SIMULATION ..	A6-2
APP. FIG. 6.3-1	VELOCITY-QUANTITY CURVE	A6-3
APP. TABLE 6.3-3	AVERAGE TRAFFIC VOLUME BY ROUTE: 1987, 1991, 1995	A6-4
APP. TABLE 6.3-4	AVERAGE TRAFFIC VOLUME BY VEHICLE TYPE: 1987 AND 1995	A6-5
 <u>APPENDIXES FOR CHAPTER 7</u>		
APP. NOTE 7.2	ALTERNATIVE ROUTES	A7-1, thru A7-4
APP. FIG. 7.2-1	PLAN OF ALTERNATIVE ROUTES	A7-2
APP. TABLE 7.3-1	ALTERNATIVE ROUTE STUDY: ROUTE "B".....	A7-5
APP. TABLE 7.3-2	ALTERNATIVE ROUTE STUDY: ROUTE "C" - NORTHERN PART	A7-6
APP. TABLE 7.3-3	ALTERNATIVE ROUTE STUDY: ROUTE "C" - SOUTHERN PART	A7-7
 <u>APPENDIXES FOR CHAPTER 8</u>		
APP. NOTE 8-2	GEOLOGIC FORMATION OF THE ROADS AND EARTHWORK MATERIALS	A8-1 thru A8-3

<u>Table/Fig.</u>	<u>Title</u>	<u>Page</u>
APP. FIG. 8.2-1	GENERAL GEOLOGIC MAP	A8-4
APP. FIG. 8.2-2	SURFACE SOIL MAP	A8-5
APP. FIG. 8.2-3	BOREHOLE LOCATION MAP OF SOIL EXPLORATION	A8-6
APP. FIG. 8.2-4	SOIL PROFILE OF A-ROUTE	A8-7
APP. FIG. 8.2-5	SOIL PROFILE OF B-ROUTE	A8-8
APP. FIG. 8.2-6	SOIL PROFILE OF C-ROUTE	A8-9
APP. FIG. 8.2-7	GEOLOGIC PROFILE OF CONE PENETRATIONS.....	A8-10
APP. FIG. 8.2-8	SIEVE ANALYSIS AND PLASTICITY CHART OF SUB-SURFACE	A8-11
APP. FIG. 8.2-9	MATERIALS MAP NEAR THE PROJECT ROADS	A8-12
APP. TABLE 8.2-1	BORING LOGS OF PROJECT ROADS	A8-13
APP. TABLE 8.2-2	RESULTS OF COMPACITON AND C.B.R. TESTS	A8-14
APP. TABLE 8.2-3	MATERIAL SOURCES NEAR THE PROJECT ROADS ...	A8-15 thru A8-21
APP. FIG. 8.5-1	CAPACITY ANALYSIS OF INTERSECTION (SUCAT)	A8-22
APP. FIG. 8.5-2	SCHEMATIC PLAN OF SUCAT INTERCHANGE	A8-23
APP. FIG. 8.5-3	CAPACITY ANALYSIS OF INTERSECTION (A-ROUTE/IMELDA AVE. EXT.)	A8-24
APP. FIG. 8.5-4	SCHEMATIC LAN OF A-ROUTE/IMELDA AVE. EXT	A8-25
APP. FIG. 8.5-5	CAPACITY ANALYSIS OF INTERSECTION (A-ROUTE/QUIRINO AVE.)	A8-26
APP. FIG. 8.5-6	SCHEMATIC PLAN OF A-ROUTE/QUIRINO AVE	A8-27
APP. FIG. 8.5-7	CAPACITY ANALYSIS OF INTERSECTION (B-ROUTE/QUIRINO AVE.)	A8-28
APP. FIG. 8.5-8	CAPACITY ANALYSIS OF INTERSECTION (BICUTAN)	A8-29
APP. FIG. 8.5-9	SCHEMATIC PLAN OF BICUTAN INTERCHANGE	A8-30
APP. FIG. 8.5-10	CAPACITY ANALYSIS OF INTERSECTION (A-ROUTE/C-ROUTE)	A8-31
APP. FIG. 8.5-11	SCHEMATIC PLAN OF A-ROUTE/C-ROUTE INTERCHANGE	A8-32
APP. FIG. 8.5-12	CAPACITY ANALYSIS OF INTERSECTION (B-ROUTE/C-ROUTE)	A8-33
APP. FIG. 8.5-13	SCHEMATIC PLAN OF B-ROUTE/C-ROUTE INTERCHANGE	A8-34
APP. FIG. 8.5-14	CAPACITY ANALYSIS OF INTERSECTION (C-ROUTE/MUNTINLUPA-ROSARIO ROAD)	A8-35
APP. FIG. 8.5-15	SCHEMATIC PLAN OF C-ROUTE/MUNTINLUPA- ROSARIO ROAD	A8-36

<u>Table/Fig.</u>	<u>Title</u>	<u>Page</u>
APP. IG. 8.5-16	CAPACITY ANALYSIS OF INTERSECTION (C-ROUTE/SOUTH LUZON EXPRESSWAY)	A8-37
APP. FIG. 8.5-17	CAPACITY ANALYSIS OF INTERSECTION (C-ROUTE/NATIONAL ROAD NO. 1)	A8-38
APP. NOTE 8.6	DESIGN OF FLEXIBLE PAVEMENT	A8-39 thru A8-42
APP. TABLE 8.7-1	INVENTORY OF EXISTING DRAINAGE STRUCTURES	A8-43
APP. FIG. 8.7-1	LOCATION OF PROPOSED STRUCTURES	A8-44
APP. TABLE 8.7-2	LIST OF PROPOSED BRIDGES	A8-45
APP. TABLE 8.7-3	LIST OF STANDARD AASHTO P.C.-I BEAM SECTIONS	A8-46
APP. TABLE 8.7-4	LIST OF PROPOSED PEDESTRIAN BRIDGES	A8-47
APP. TABLE 8.7-5	LIST OF PROPOSED BOX CULVERTS	A8-48
APP. TABLE 8.7-2	RELATIONSHIP OF COST OF RETAINING WALL-TYPE	A8-49
APP. FIG. 8.8-1	RIVERS IN PROJECT AREA	A8-50
APP. FIG. 8.8-2	MEAN TIDE VALUES OF MANILA BAY	A8-51
APP. FIG. 8.8-3	RAINFALL INTENSITY DURATION CURVES	A8-52
APP. FIG. 8.8-4	CATCHMENT AREAS FOR MAIN RIVERS	A8-53
APP. TABLE 8.7-5	LIST OF PROPOSED BOX CULVERTS	A8-48
APP. FIG. 8.7-2	RELATIONSHIP OF COST OF RETAINING WALL-TYPE	A8-49
APP. FIG. 8.8-1	RIVERS IN PROJECT AREA	A8-50
APP. FIG. 8.8-2	MEAN TIDE VALUES	A8-51
APP. FIG. 8.8-3	RAINFALL INTENSITY DURATION CURVES	A8-52
APP. FIG. 8.8-4	CATCHMENT AREAS FOR MAIN RIVERS	A8-53

APPENDIXES FOR CHAPTER 10

APP. TABLE 10.3-1	EXAMPLES OF UNIT PRICE ANALYSIS	A10-1 thru A10-16
APP. TABLE 10.5-1	ESTIMATED CONSTRUCTION COST FOR PLAN 1 BY STAGE	A10-17
APP. TABLE 10.5-2	ESTIMATED CONSTRUCTION COST FOR PLAN 2 BY STAGE	A10-18
APP. TABLE 10.5-3	ESTIMATED CONSTRUCTION COST FOR PLAN 3 BY STAGE	A10-19
APP. FIG. 10.5-1	GRADE SEPARATION SCHEDULE BY ALTERNATIVE: PLAN 1	A10-20
APP. FIG. 10.5-2	GRADE SEPARATION SCHEDULE BY ALTERNATIVE: PLAN 2	A10-21

<u>Table/Fig.</u>	<u>Title</u>	<u>Page</u>
APP. FIG. 10.5-3	GRADE SEPARATION SCHEDULE BY ALTERNATIVE: PLAN 3	A10-22
 <u>APPENDIXES FOR CHAPTER 11</u>		
APP. NOTE 11.1	BASIC ROAD TRAFFIC COST	A11-1 thru A11-9
APP. TABLE 11.2-1	PRICE OF REPRESENTATIVE VEHICLES, JUNE 1981	A11-1
APP. TABLE 11.2-2	PRICE OF FUEL AND OIL AS OF JUNE 1981 ..	A11-2
APP. TABLE 11.2-3	FUEL AND OIL CONSUMPTION	A11-3
APP. TABLE 11.2-4	PRICES AND LIFE OF TIRES, JUNE 1981	A11-3
APP. TABLE 11.2-5	REQUIREMENT FOR MAINTENANCE AND REPAIR .	A11-4
APP. TABLE 11.2-6	OPERATING CHARACTERISTICS	A11-4
APP. TABLE 11.2-7	RUNNING COST, JUNE 1981	A11-5
APP. TABLE 11.2-8	ANNUAL OPERATING HOURS	A11-6
APP. TABLE 11.2-9	CREW COST	A11-6
APP. TABLE 11.2-10	INSURANCE COST	A11-7
APP. TABLE 11.2-11	REDUCTION FACTOR	A11-8
APP. TABLE 11.2-12	FIXED COST	A11-8
APP. NOTE 11.2	d1 METHOD (APPLICATION OF BASIC TRAFFIC COSTS ON THE ROAD NETWORKS WITH AND WITHOUT THE PROJECT)	A11-10 thru A11-15
APP. NOTE 11.3	DEVELOPMENT BENEFITS (SAVINGS IN TRAFFIC COST ASSOCIATED WITH THE DEVELOPMENT OF A NEW TRAFFIC PATTERN)	A11-16 thru A11-19
APP. TABLE 11.3-1	POPULATION WITH AND WITHOUT THE PROJECT ROUTE C	A11-20
APP. TABLE 11.3-2	TRIPS TO/FROM THE ZONES IN 1981	A11-21
APP. TABLE 11.3-3	BALANCES OF THE TRIPS IN 2000 ASSOCIATED WITH THE ZONES; WITH AND WITHOUT ROUTE C	A11-21
APP. TABLE 11.3-4	NORMAL ECONOMIC SAVINGS OF THE ALTERNATIVES IN DIZ	A11-22
APP. TABLE 11.4-5	CONSTRUCTION COST OF THE ASSOCIATED ROADS WITH THE PROJECT IN DIZ	A11-23
APP. TABLE 11.5-1	PLAN 1 BENEFITS & COST STREAMS	A11-24
APP. TABLE 11.5-2	PLAN 2 BENEFITS & COST STREAMS	A11-25
APP. TABLE 11.5-3	PLAN 3 BENEFITS & COST STREAMS	A11-26

<u>Table/Fig.</u>	<u>Title</u>	<u>Page</u>
<u>APPENDIXES FOR CHAPTER 13</u>		
APP. NOTE 13.1	FUNDING AND DISBURSEMENT FOR HIGHWAYS IN NATIONAL CAPITAL REGION AND REGION IV-A	A13-1
APP. TABLE 13.3-1	BUDGETS FOR CAPITAL OUTLAYS FOR HIGHWAYS: MPWH	A13-2
APP. TABLE 13.3-2	ASSUMED CAPITAL OUTLAYS IN FUTURE FOR NCR AND REGION IV-A	A13-2
APP. TABLE 13.3-3	CASH DISBURSEMENT BY THE PROJECT AND ASSOCIATED ROADS	A13-3
<u>OTHER APPENDIXES</u>		
APP. TABLE 14-1	1981 VEHICLE TRIP OD TABLE	A14-1 thru A14-3
APP. TABLE 14-2	1990 VEHICLE TRIP OD TABLE	A14-4 thru A14-6
APP. TABLE 14-3	2000 VEHICLE TRIP OD TABLE	A14-7 thru A14-9

