

TAMA KOSI NO.6
CA (km ²) 1,900
P (MW) 113
Q (m ³ /s) 58
H (m) 244

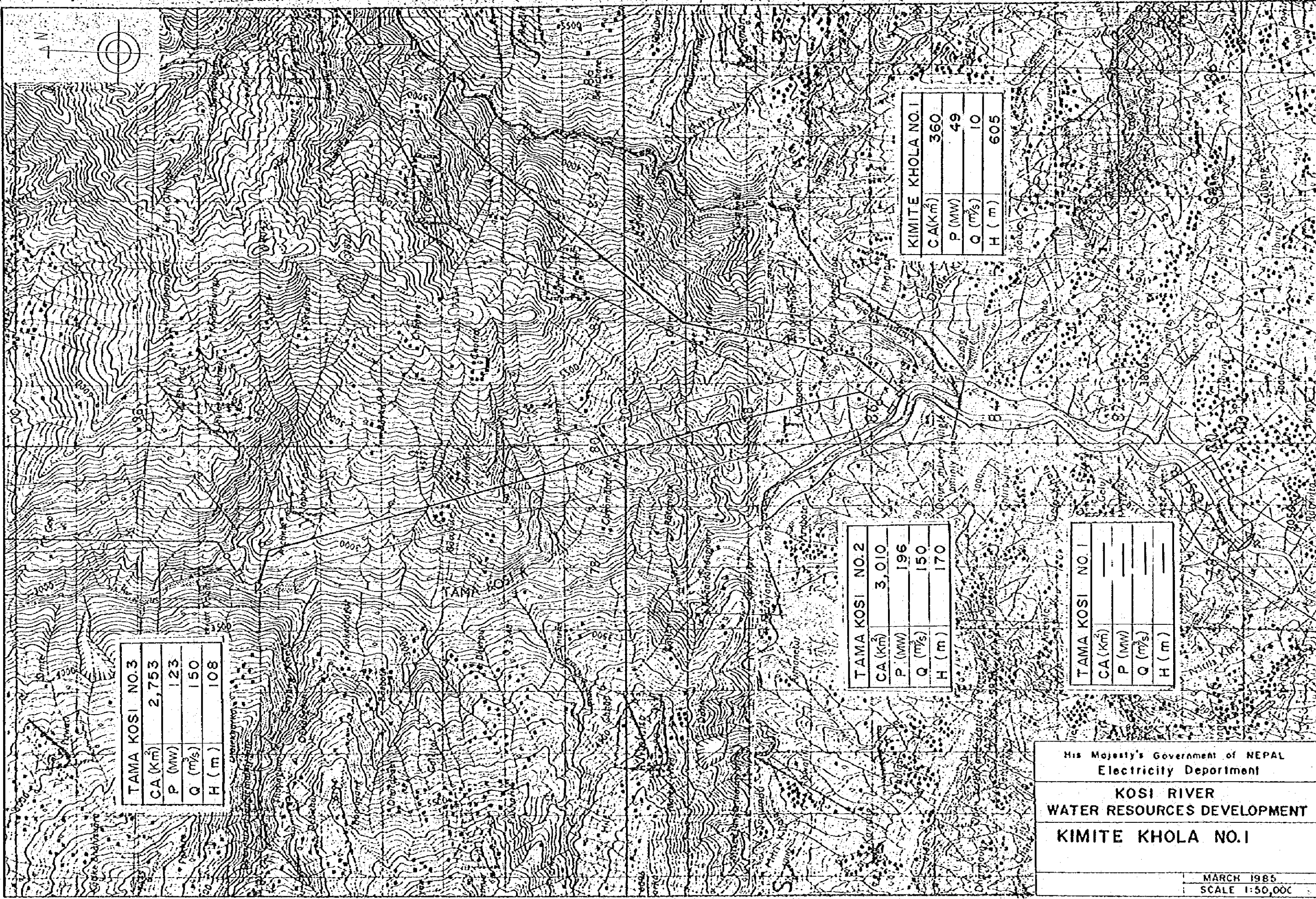
TAMA KOSI NO.5
CA (km ²) 1,950
P (MW) 102
Q (m ³ /s) 60
H (m) 213

His Majesty's Government of NEPAL
 Electricity Department

KOSI RIVER
WATER RESOURCES DEVELOPMENT

TAMA KOSI NO.5 NO.6

MARCH 1985
 SCALE 1:50,000



TAMA KOSI NO.3	
CA (km ²)	2,753
P (MW)	123
Q (m ³ /s)	150
H (m)	108

TAMA KOSI NO.2	
CA (km ²)	3,010
P (MW)	196
Q (m ³ /s)	150
H (m)	170

KIMITE KHOLA NO.1	
CA (km ²)	360
P (MW)	49
Q (m ³ /s)	10
H (m)	605

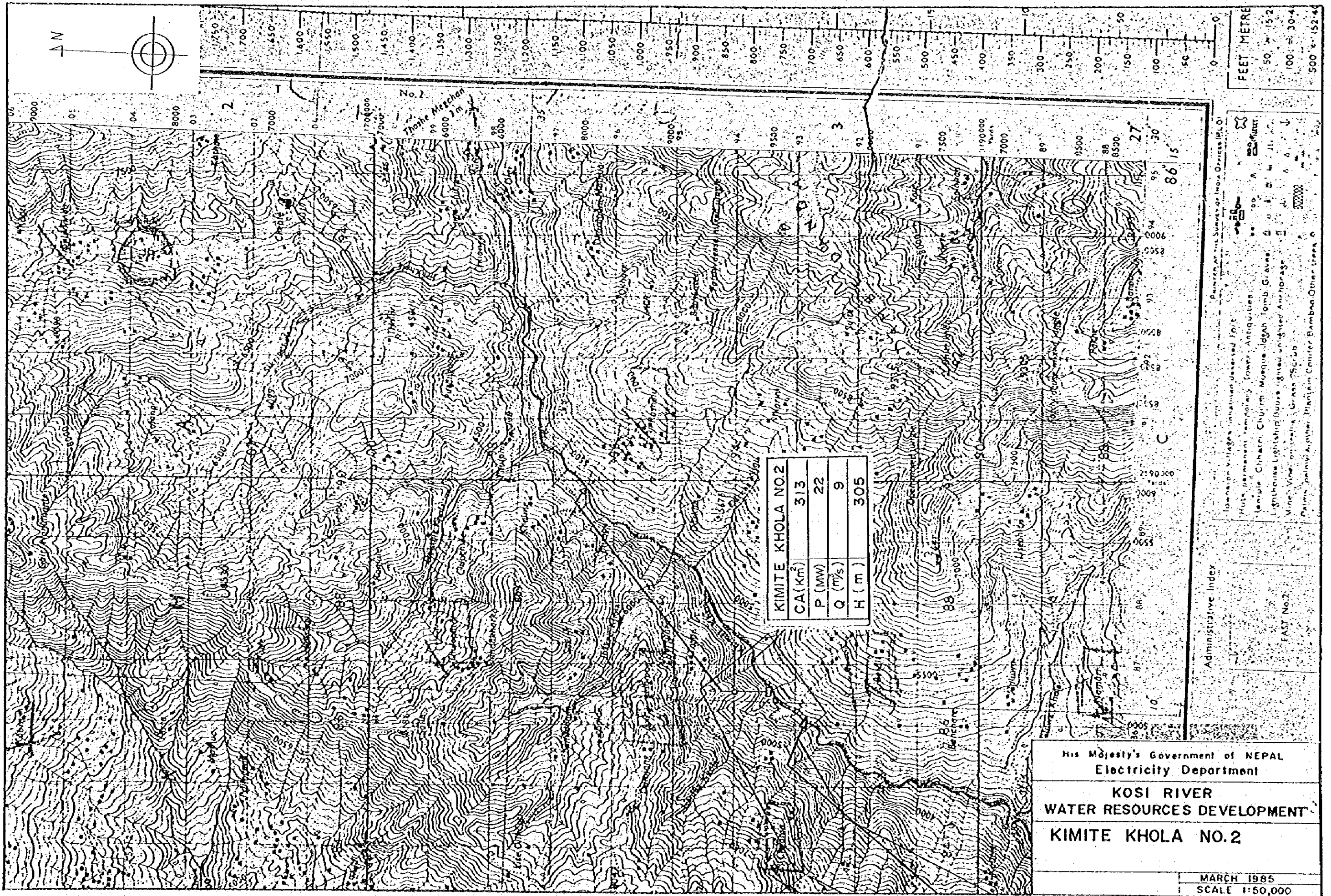
TAMA KOSI NO.1	
CA (km ²)	—
P (MW)	—
Q (m ³ /s)	—
H (m)	—

His Majesty's Government of NEPAL
 Electricity Department

KOSI RIVER
 WATER RESOURCES DEVELOPMENT

KIMITE KHOLA NO.1

MARCH 1985
 SCALE 1:50,000



KIMITE KHOLA NO.2	
CA (km ²)	313
P (MW)	22
Q (m ³ /s)	9
H (m)	305

His Majesty's Government of NEPAL
 Electricity Department
 KOSI RIVER
 WATER RESOURCES DEVELOPMENT
 KIMITE KHOLA NO.2

MARCH 1985
 SCALE 1:50,000

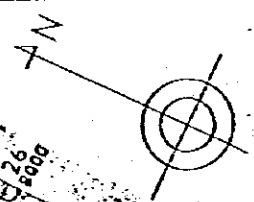
Administrative Index

Printed at the Survey of India Office, D.O.

Towns or Villages: Indicated dashed line
 Walls: permanent: solid line; temporary: dotted line
 Temples: Chhatra: Chhatra; Mosque: Mosque; Idgah: Idgah; Tomb: Tomb; Graves: Graves
 Lighted: Lighted; Unlighted: Unlighted
 Mine: Mine; Vines: Vines; Grass: Grass; Scrub: Scrub
 Palm: Palm; Other: Other; Plantain: Plantain; Conifer: Conifer; Bamboo: Bamboo; Other trees: Other trees

EAST No. 2
 86 15
 27
 30
 95
 30
 86 15

0 50 100 150 200 250 300 350 400 450 500 550
 0 500 1000 1500 2000 2500 3000 3500 4000 4500 5000 5500 6000 6500 7000 7500 8000 8500 9000 9500 10000
 0 1000 2000 3000 4000 5000 6000 7000 8000 9000 10000
 0 100 200 300 400 500 600 700 800 900 1000 1100 1200 1300 1400 1500 1600 1700 1750
 FEET METRE
 50 = 15.2
 100 = 30.4
 500 = 152.4



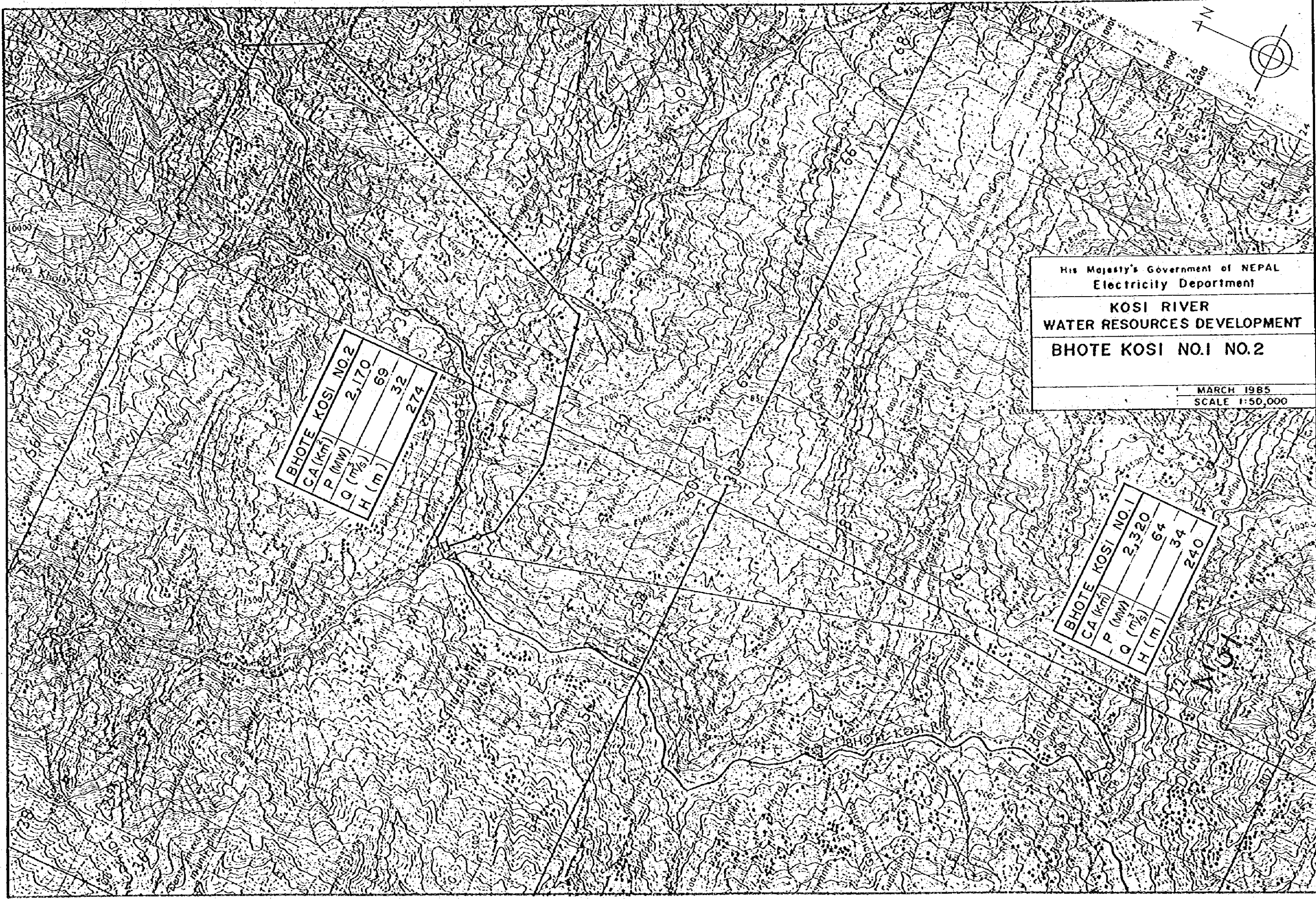
His Majesty's Government of NEPAL
Electricity Department

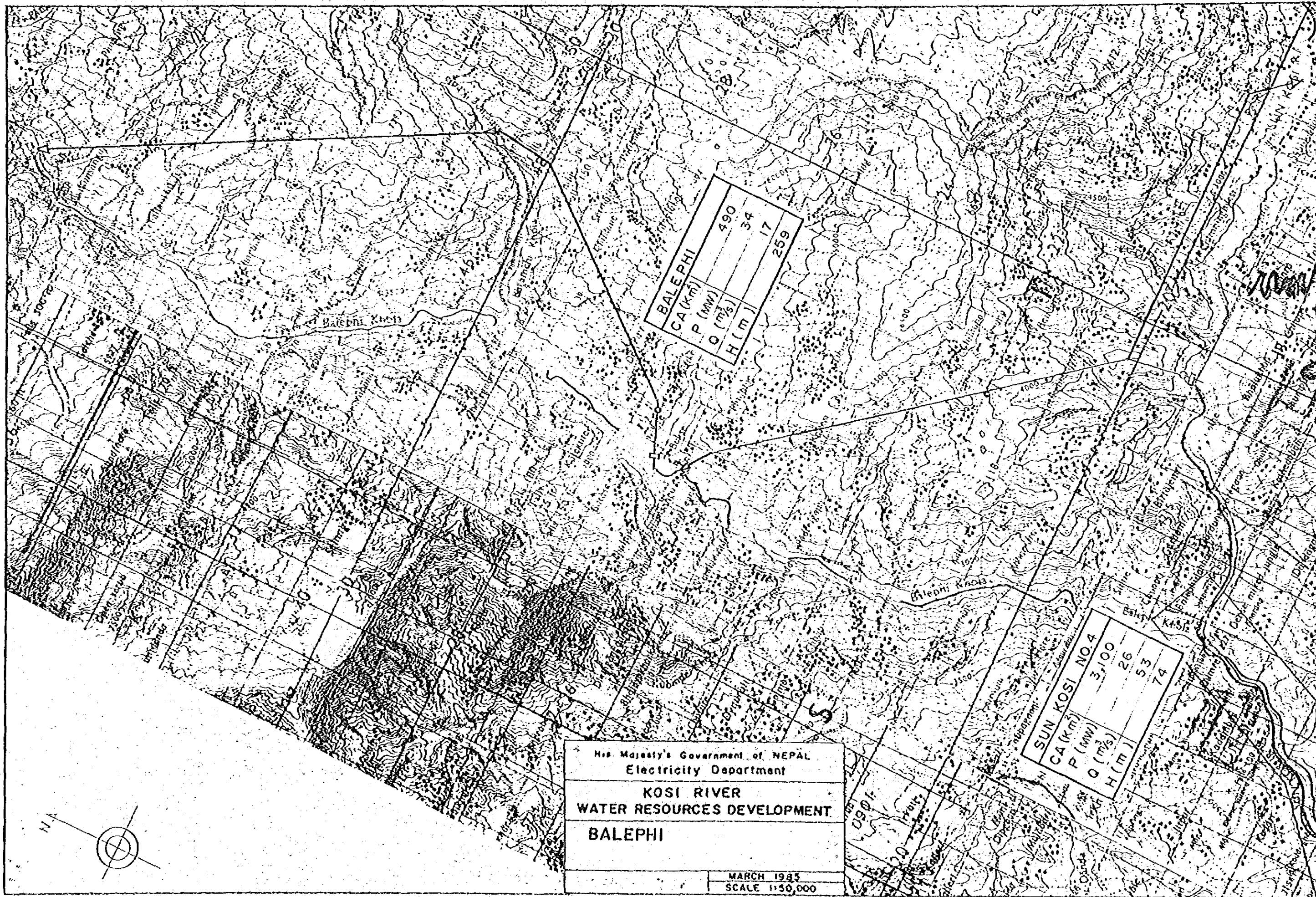
**KOSI RIVER
WATER RESOURCES DEVELOPMENT
BHOTE KOSI NO.1 NO.2**

MARCH 1985
SCALE 1:50,000

BHOTE KOSI NO.2	
CA (km ²)	2,170
P (MW)	69
Q (m ³ /s)	32
H (m)	274

BHOTE KOSI NO.1	
CA (km ²)	2,320
P (MW)	64
Q (m ³ /s)	34
H (m)	240





BALEPHI	
CA (km ²)	490
P (mm)	34
Q (m ³ /s)	17
H (m)	259

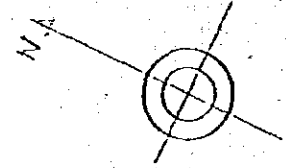
SUN KOSI NO.4	
CA (km ²)	3,100
P (mm)	26
Q (m ³ /s)	53
H (m)	74

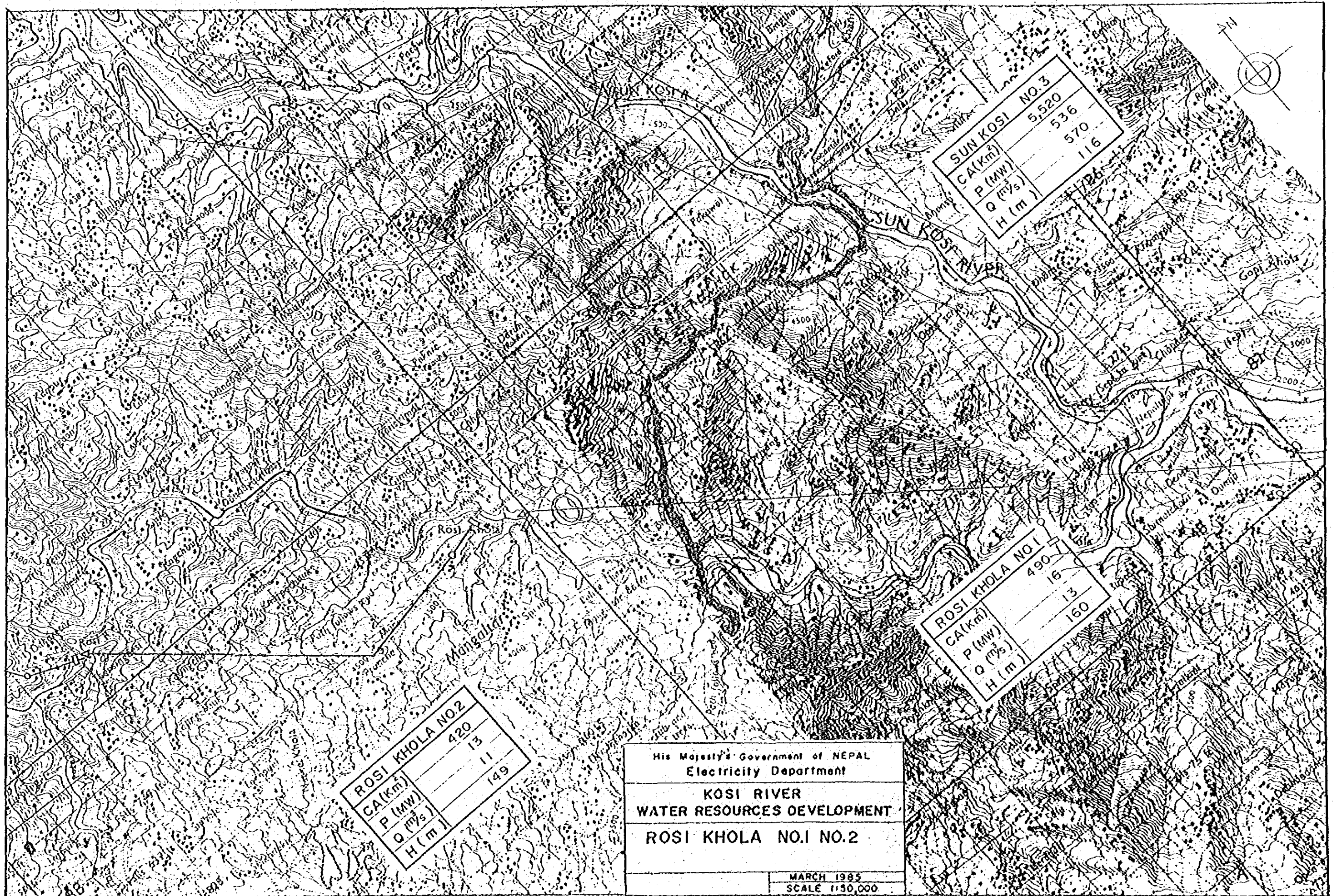
His Majesty's Government of NEPAL
 Electricity Department

**KOSI RIVER
 WATER RESOURCES DEVELOPMENT**

BALEPHI

MARCH 1985
 SCALE 1:50,000





ROSI KHOLA NO.2	
CA (km)	420
P (MW)	13
Q (m ³ /s)	11
H (m)	149

ROSI KHOLA NO.1	
CA (km)	490
P (MW)	16
Q (m ³ /s)	13
H (m)	160

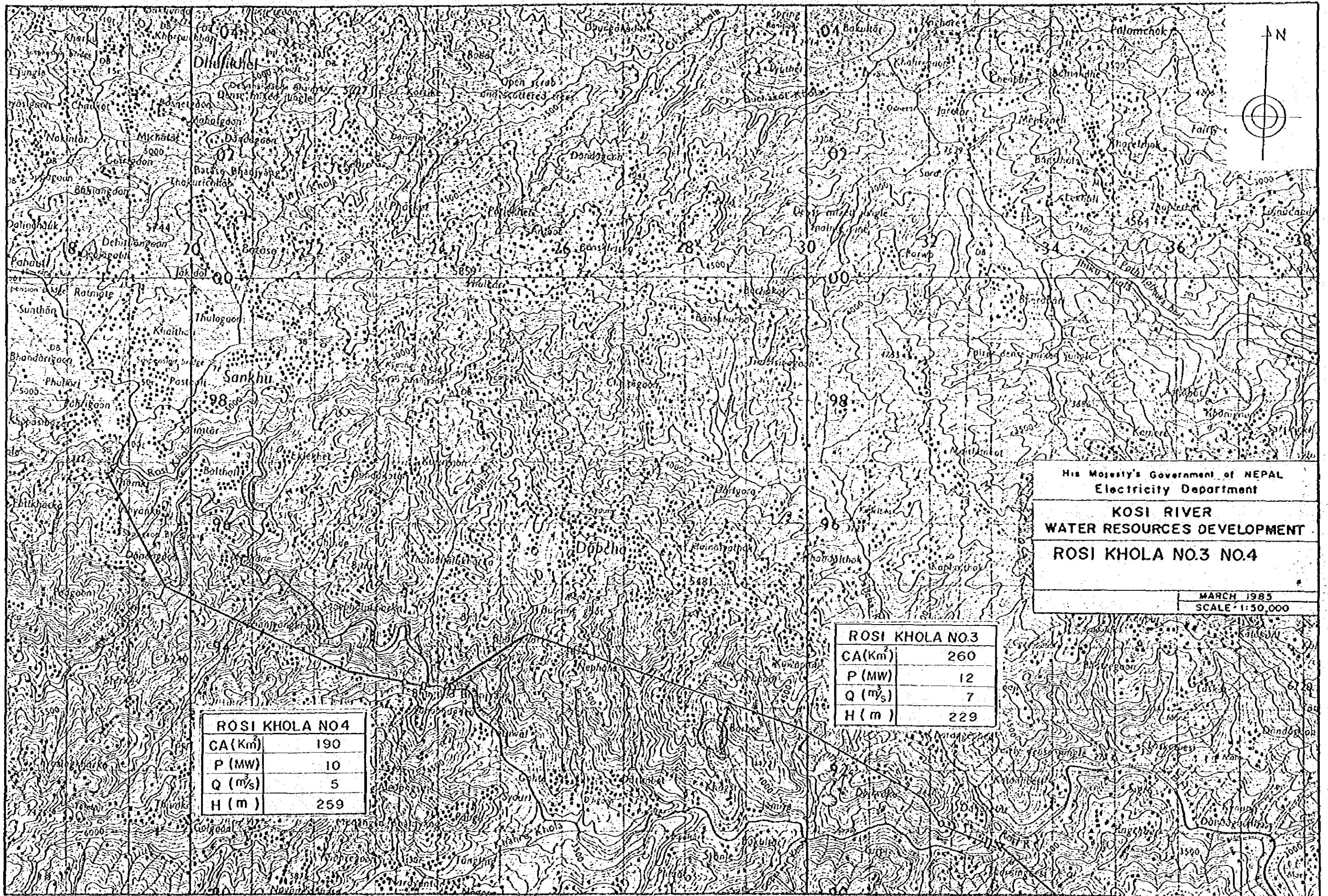
SUN KOSI NO.3	
CA (km)	5520
P (MW)	536
Q (m ³ /s)	570
H (m)	116

His Majesty's Government of NEPAL
 Electricity Department

**KOSI RIVER
 WATER RESOURCES DEVELOPMENT**

ROSI KHOLA NO.1 NO.2

MARCH 1985
 SCALE 1:50,000



His Majesty's Government of NEPAL
 Electricity Department

**KOSI RIVER
 WATER RESOURCES DEVELOPMENT**

ROSI KHOLA NO.3 NO.4

MARCH 1985
 SCALE 1:50,000

ROSI KHOLA NO.4	
CA (Km ²)	190
P (MW)	10
Q (m ³ /s)	5
H (m)	259

ROSI KHOLA NO.3	
CA (Km ²)	260
P (MW)	12
Q (m ³ /s)	7
H (m)	229



INDRAWATI NO.1	
CA (Km ²)	980
P (MW)	58
Q (m ³ /s)	110
H (m)	71

His Majesty's Government of NEPAL
Electricity Department

KOSI RIVER
WATER RESOURCES DEVELOPMENT

INDRA WATI NO.1

MARCH 1985
SCALE 1:50,000

