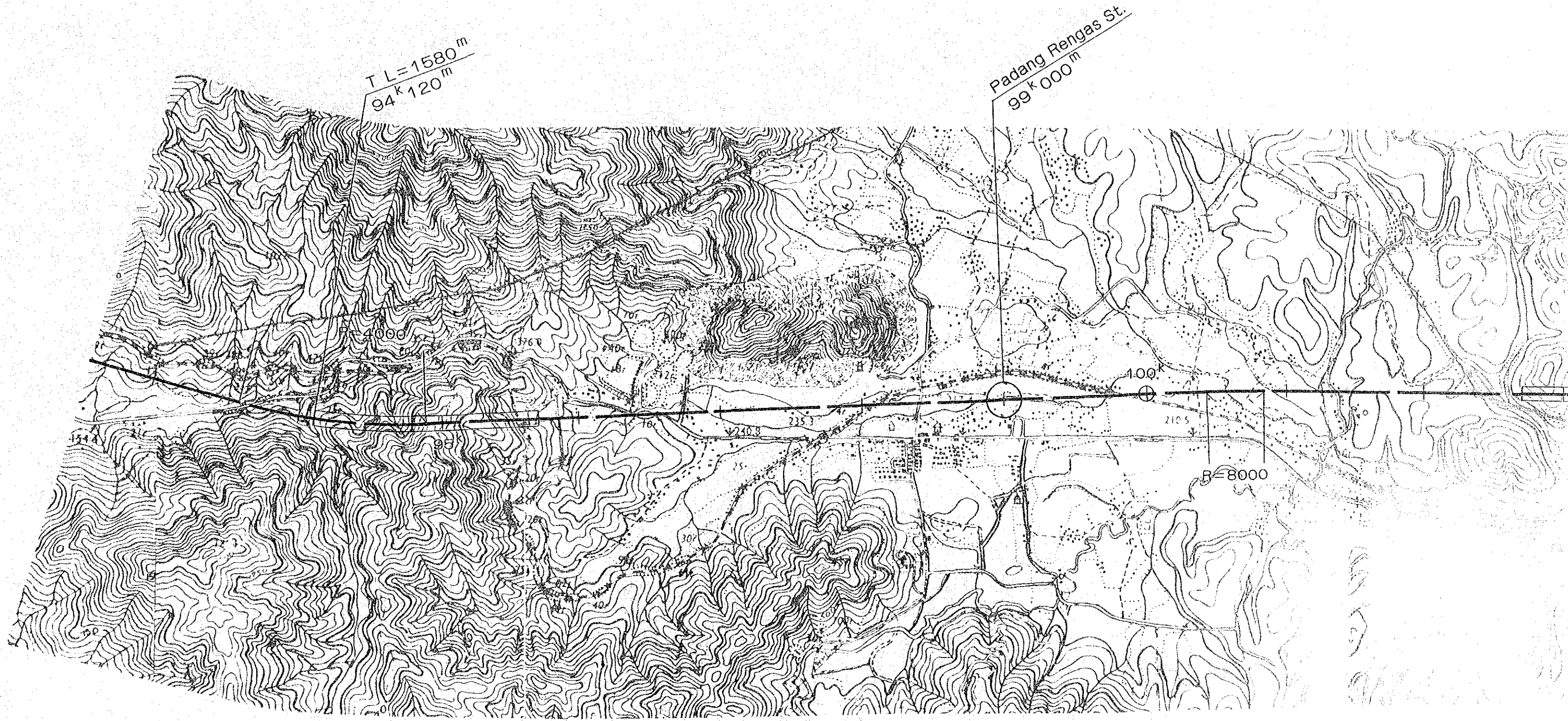


ALTERNATIVE

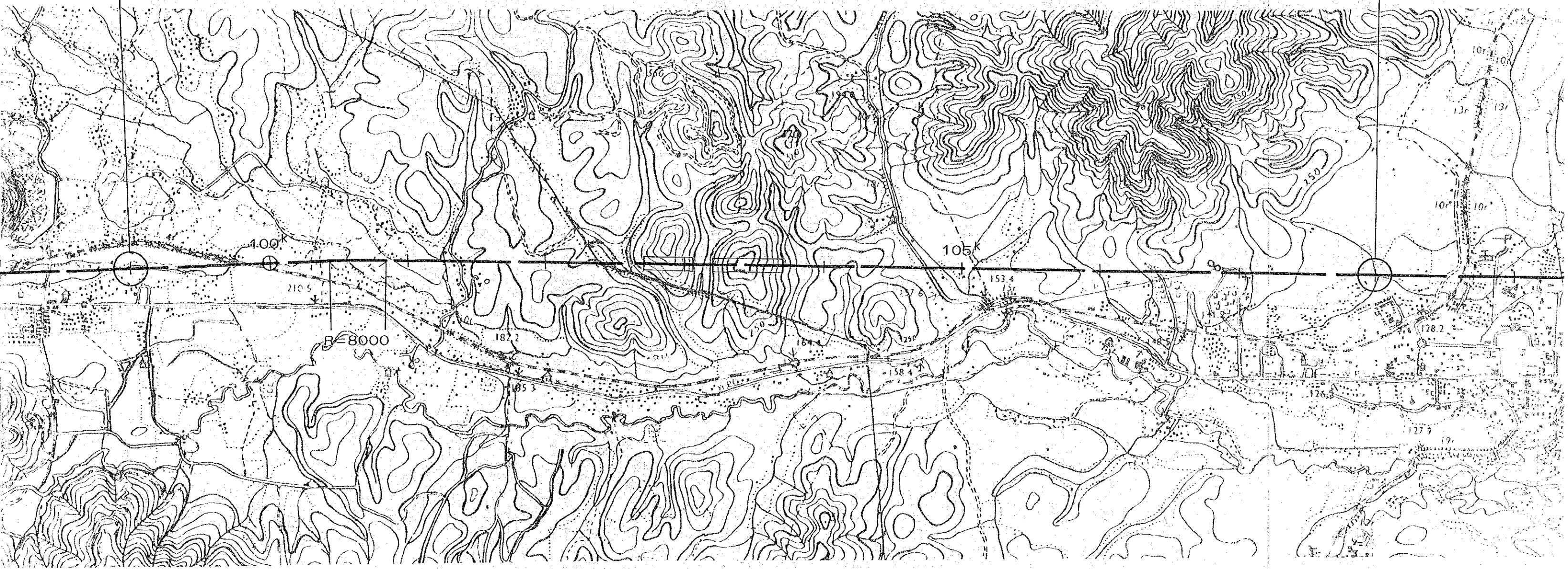
Kuala Kangsar to Ipoh

Sheet A-1~A-3

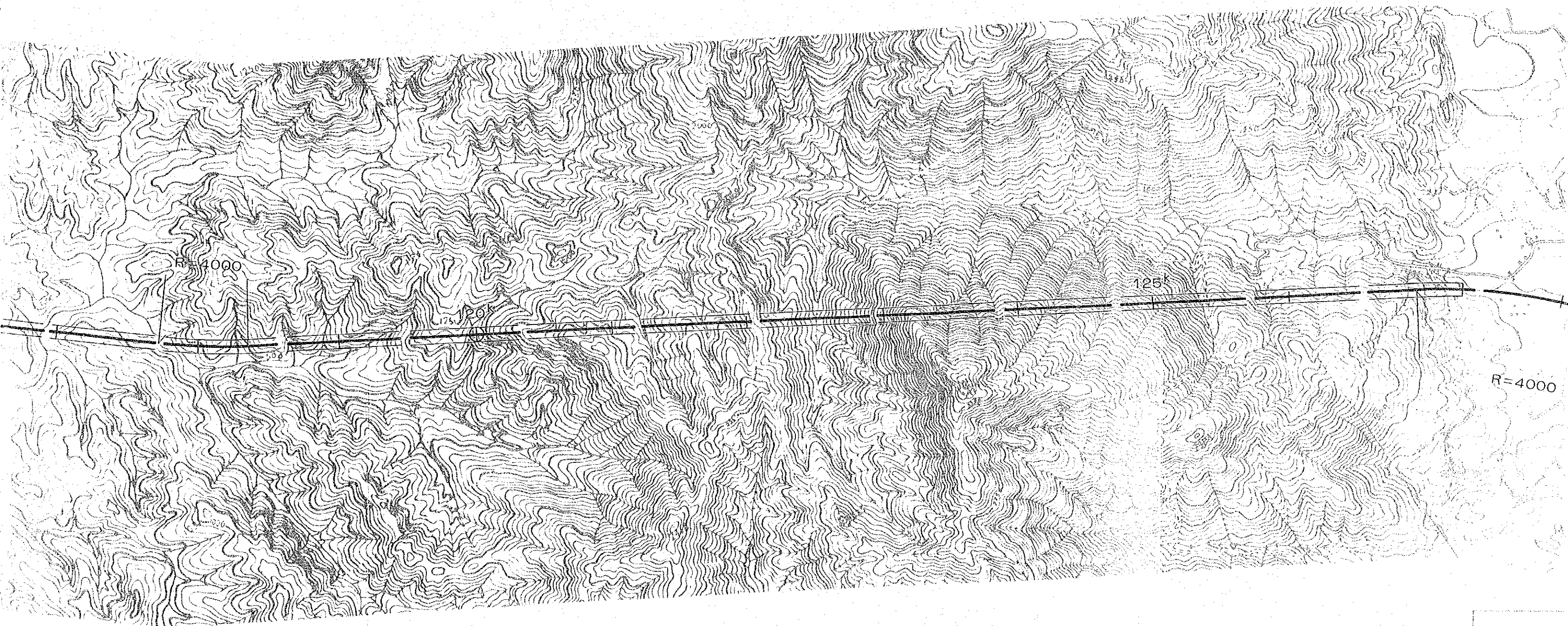


Padang Rengas St.
99'000 m

Kuala Kangsar St.
108'000 m



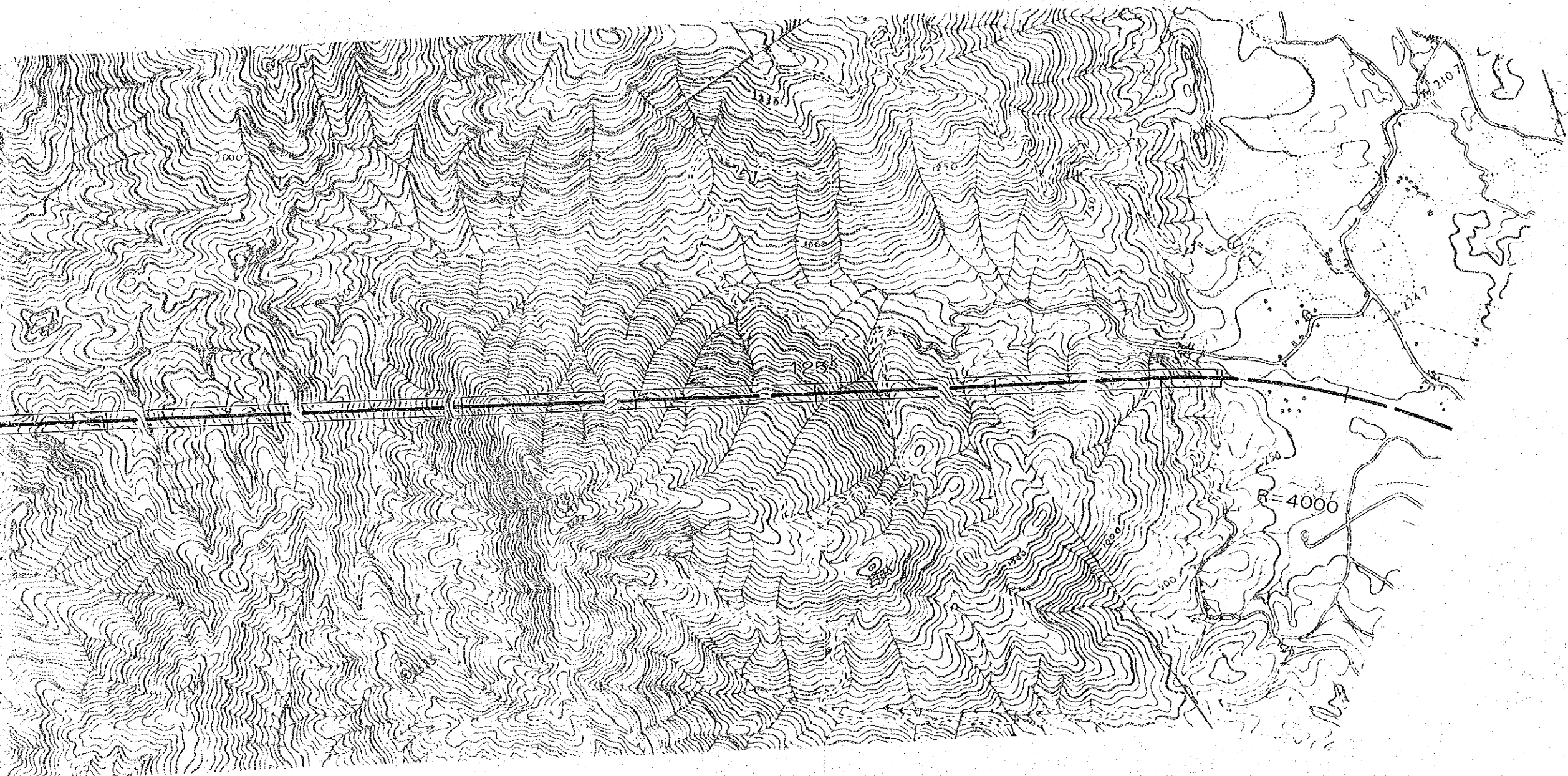




R=4000

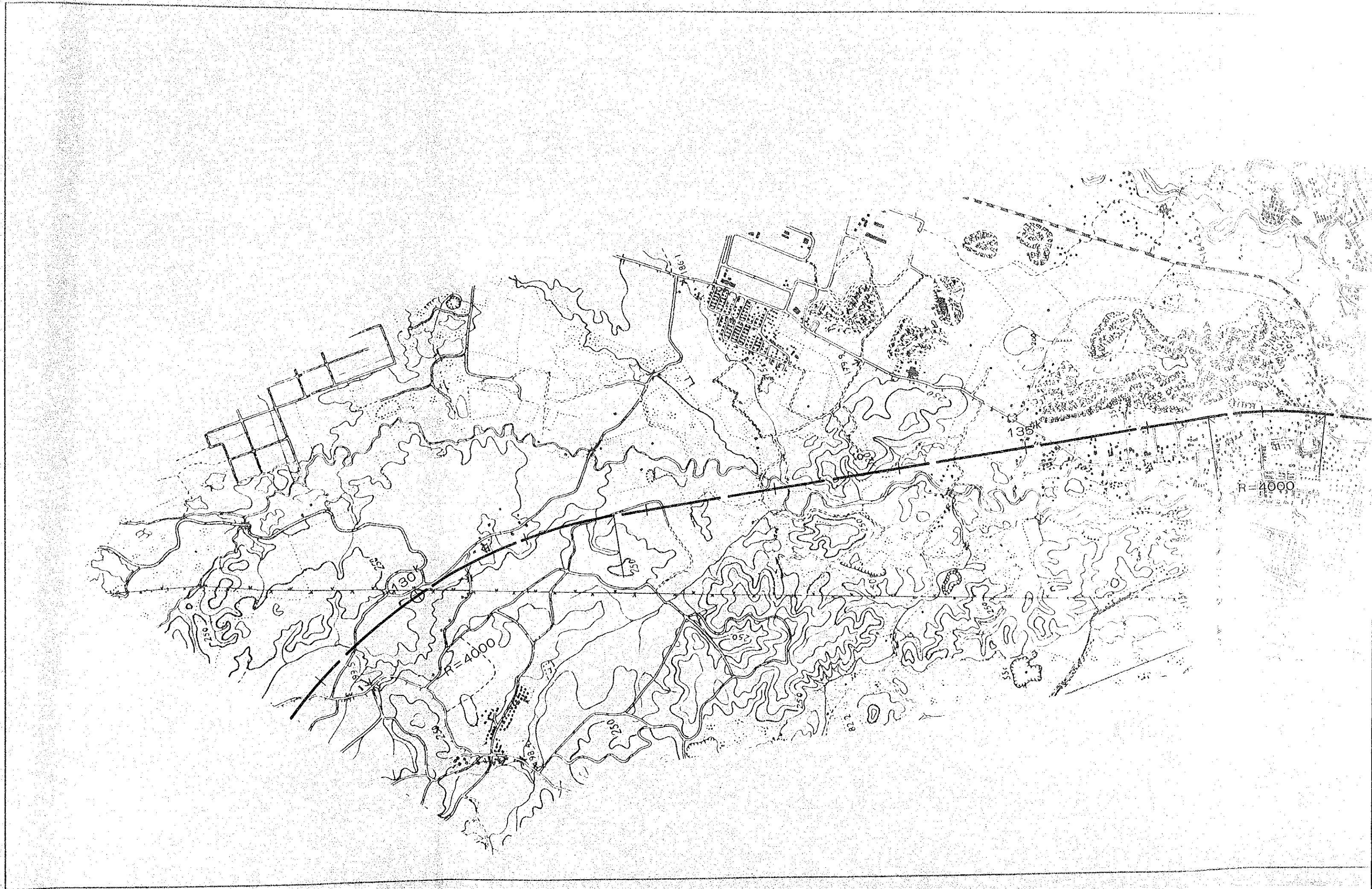
THE
AL

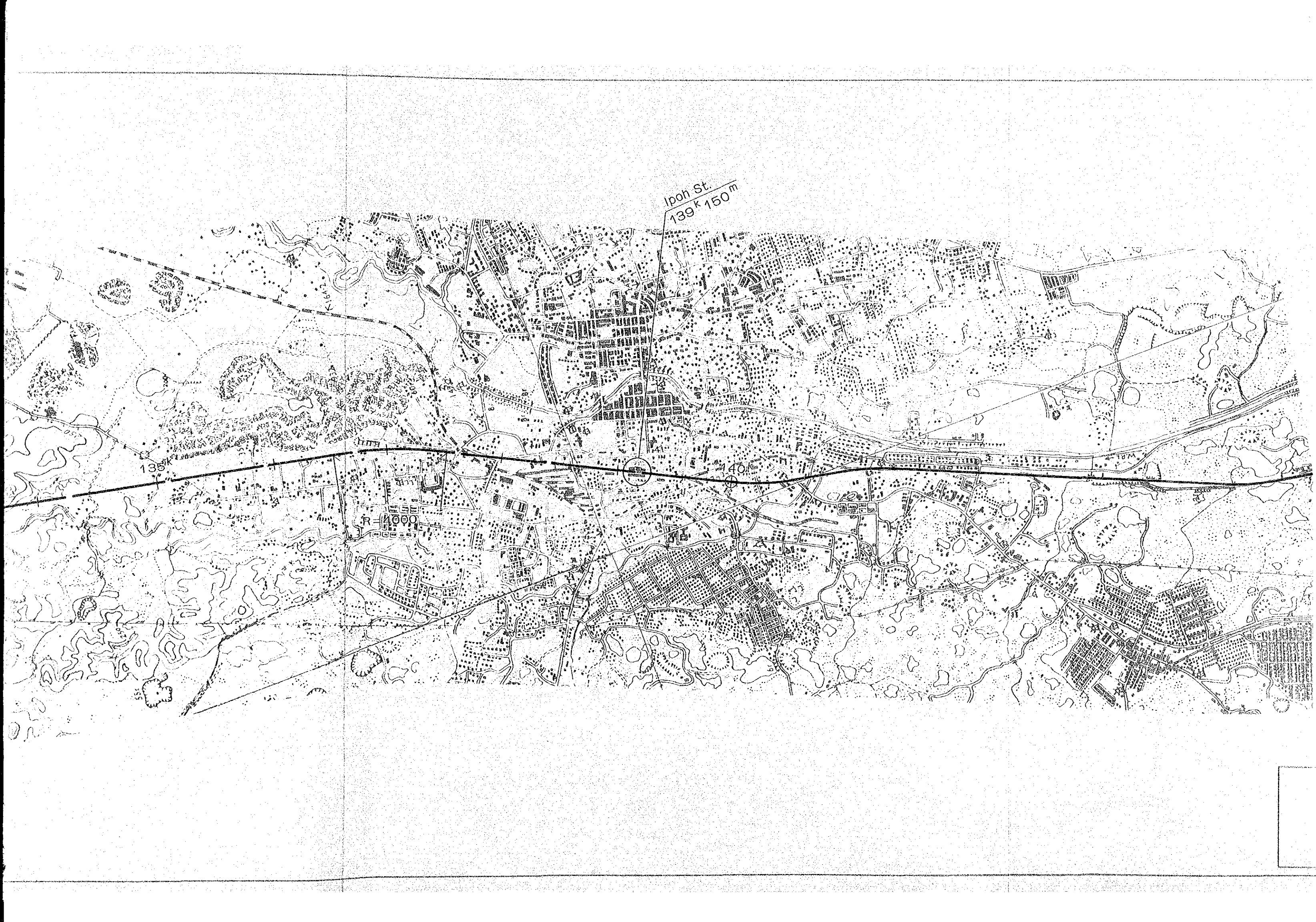
A-2

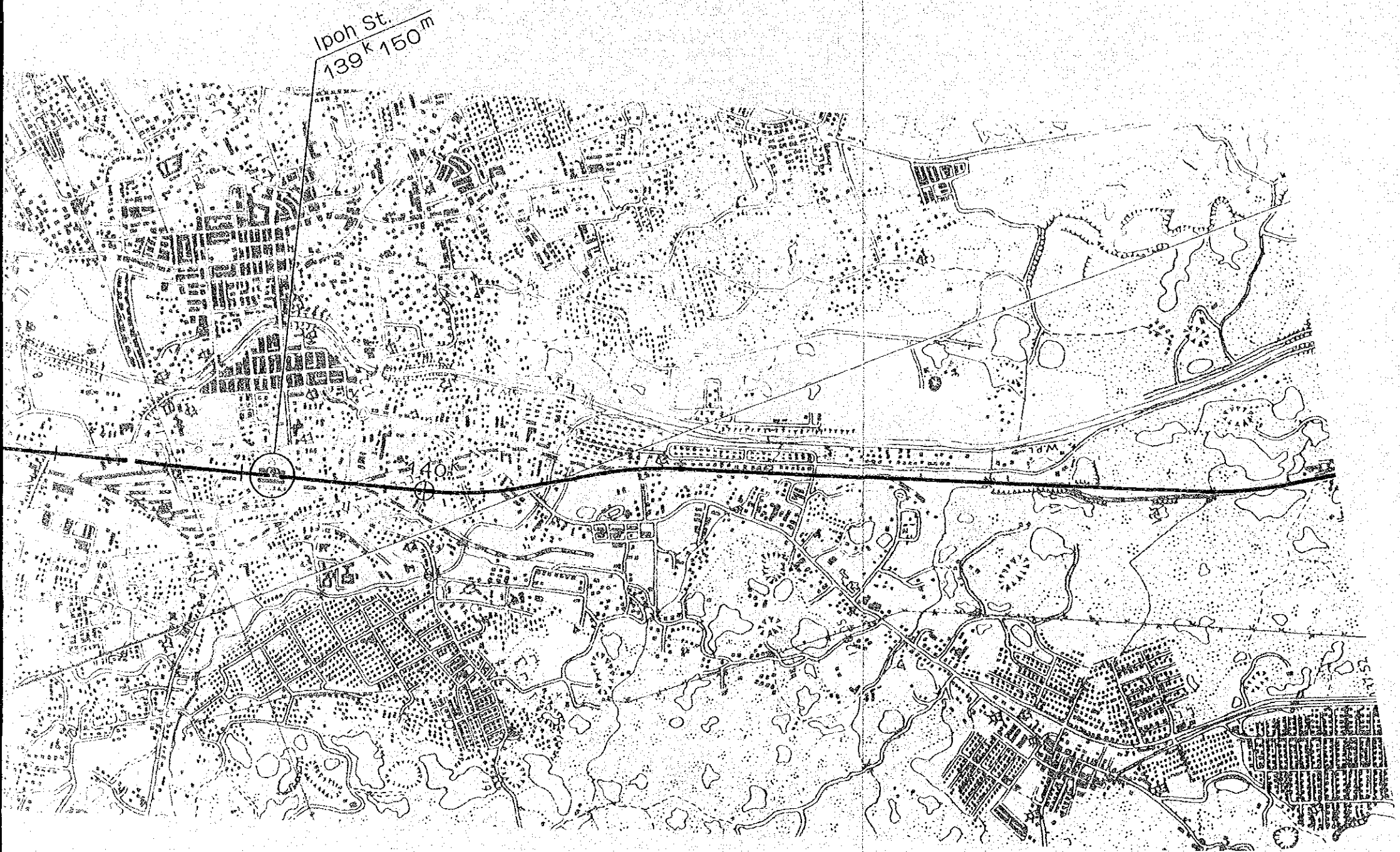


THE WEST COAST RAILWAY
ALTERNATIVE (Sheet A-2)

Scale 1 : 25,000







THE WEST COAST RAILWAY
ALTERNATIVE (Sheet A-3)
Scale 1 : 25,000

