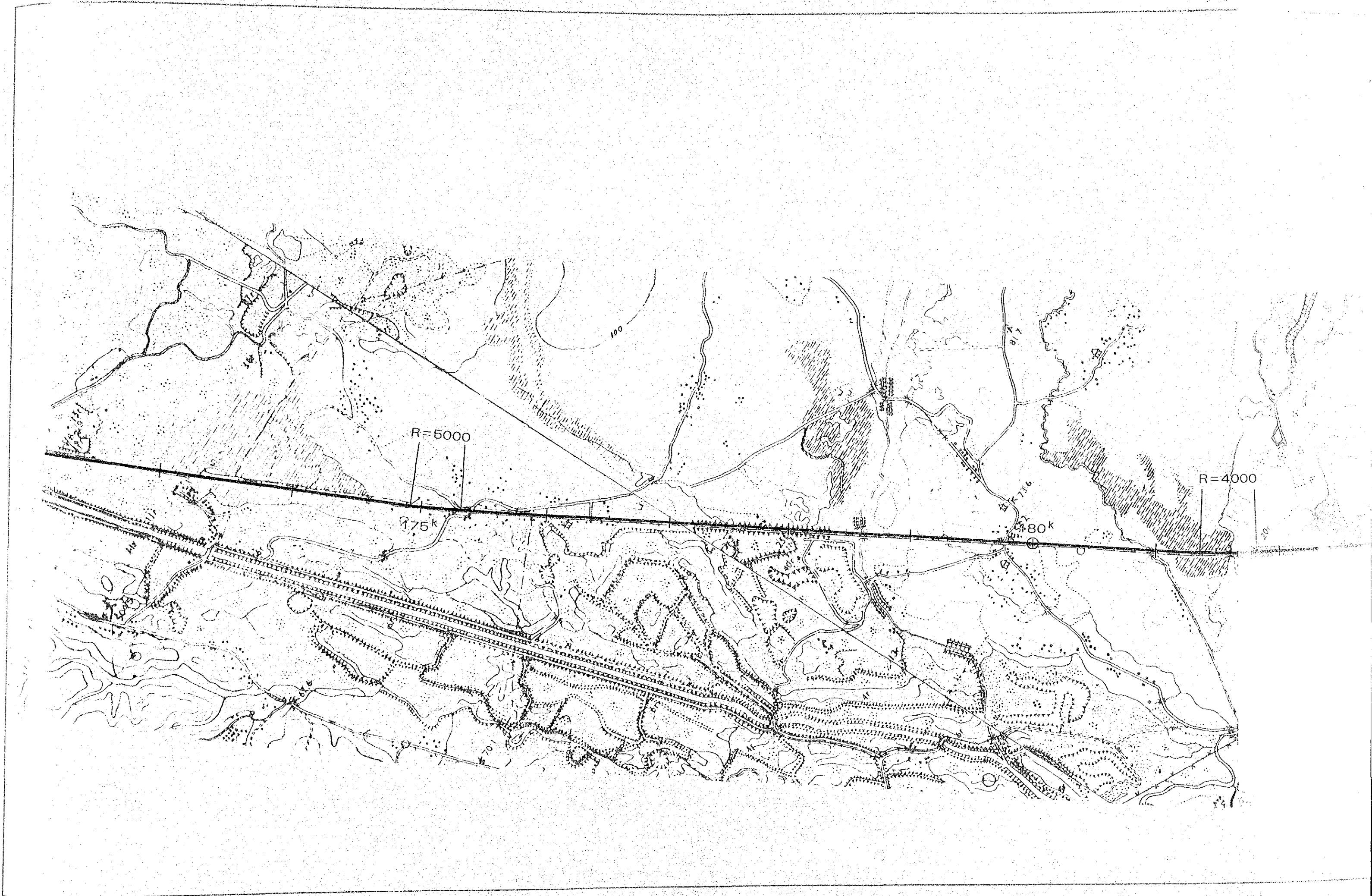
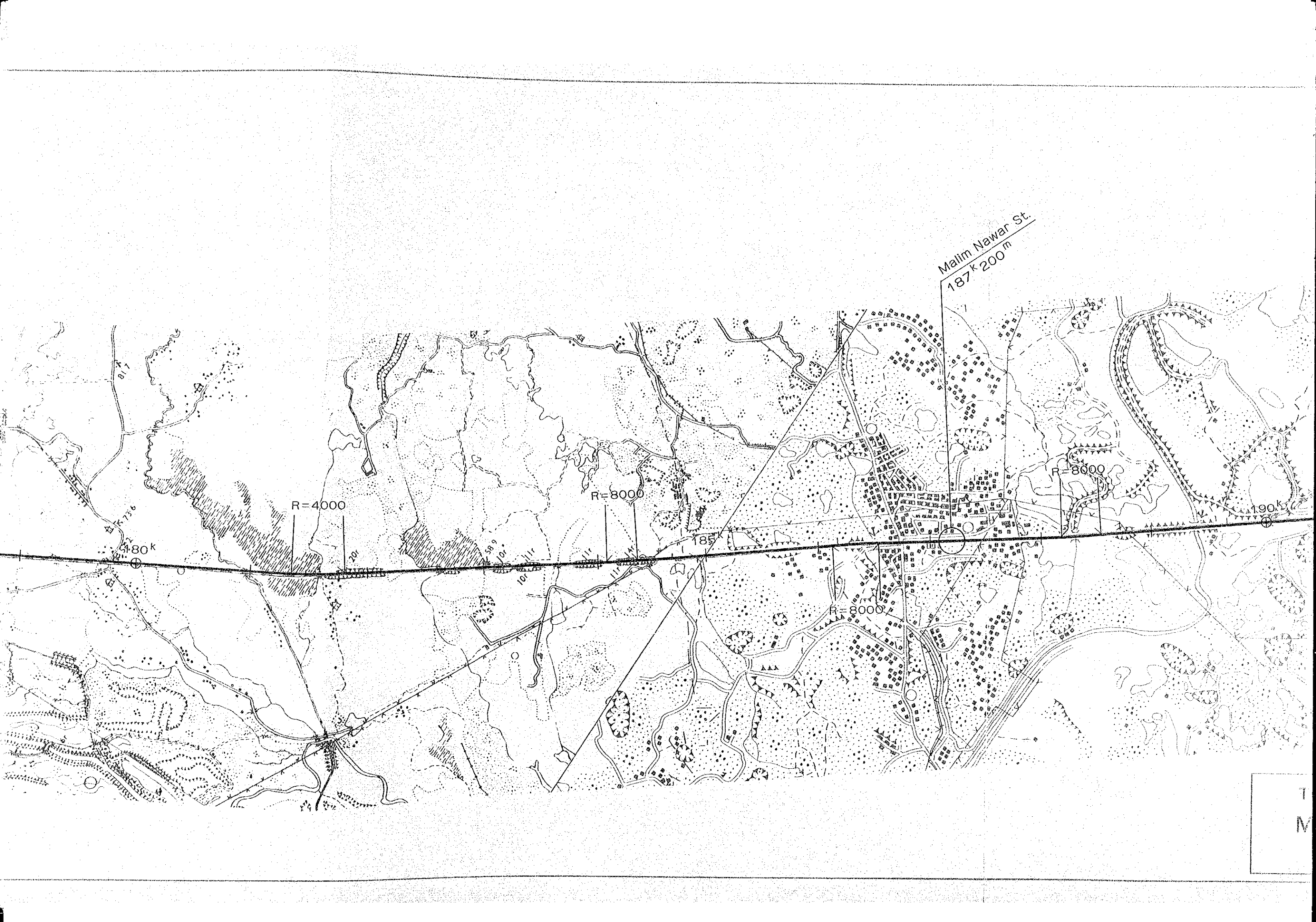


MAIN LINE

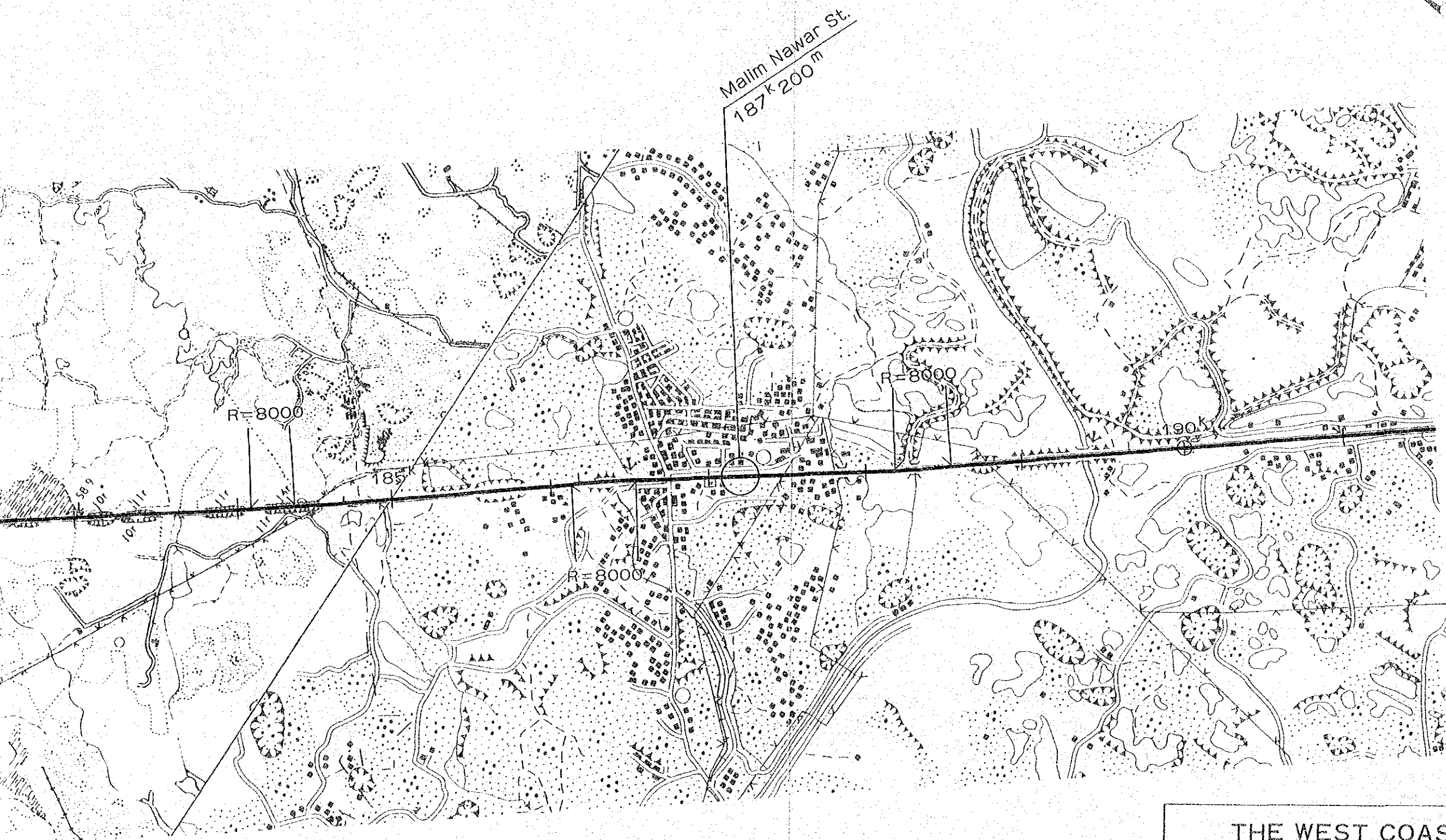
Ipoh to Kuala Lumpur

Sheet 10~18

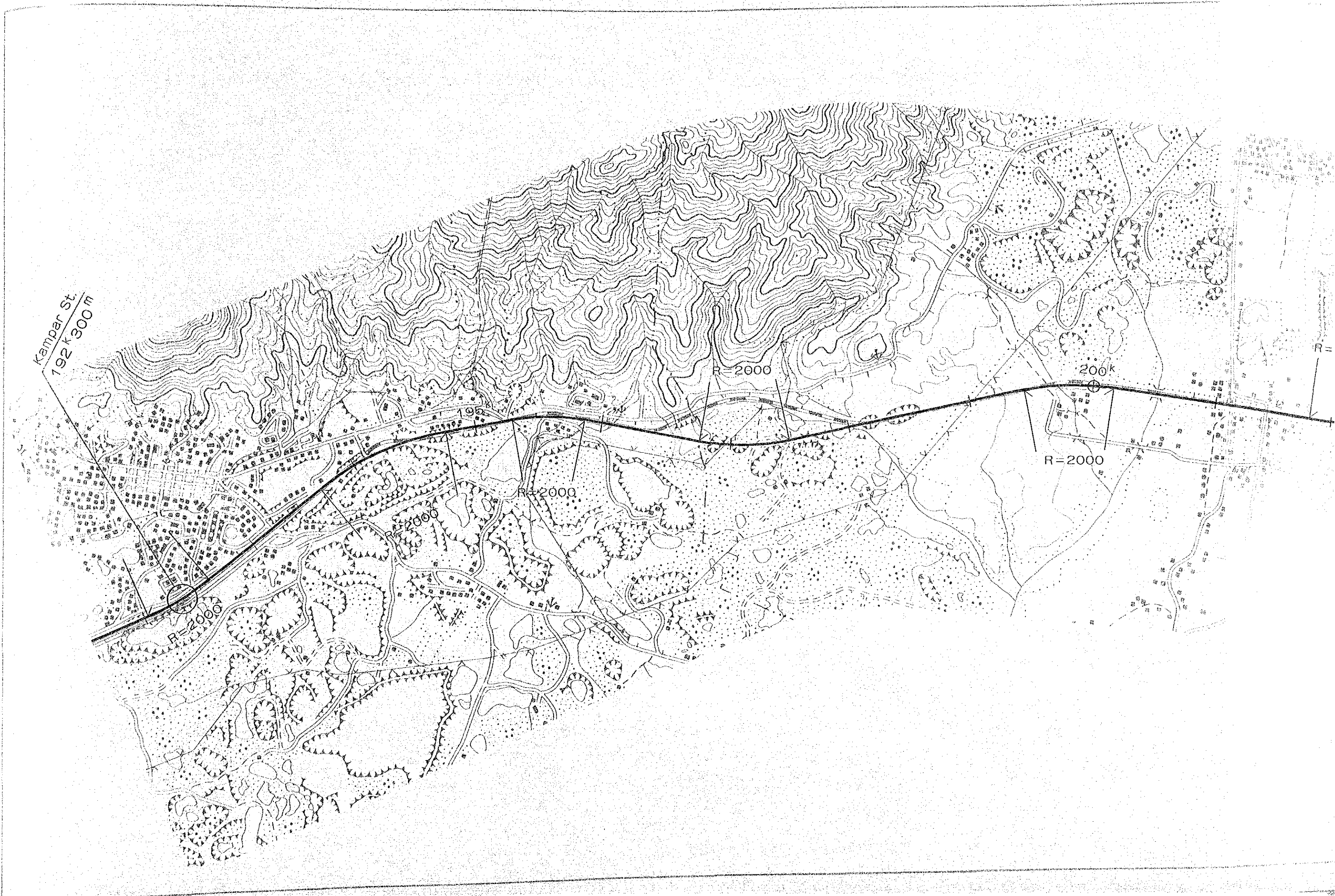




T
M



THE WEST COAST RAILWAY
MAIN LINE (Sheet 10 of 37)
Scale 1 : 25,000



Kampar St.
192 k 300 m

R=2000

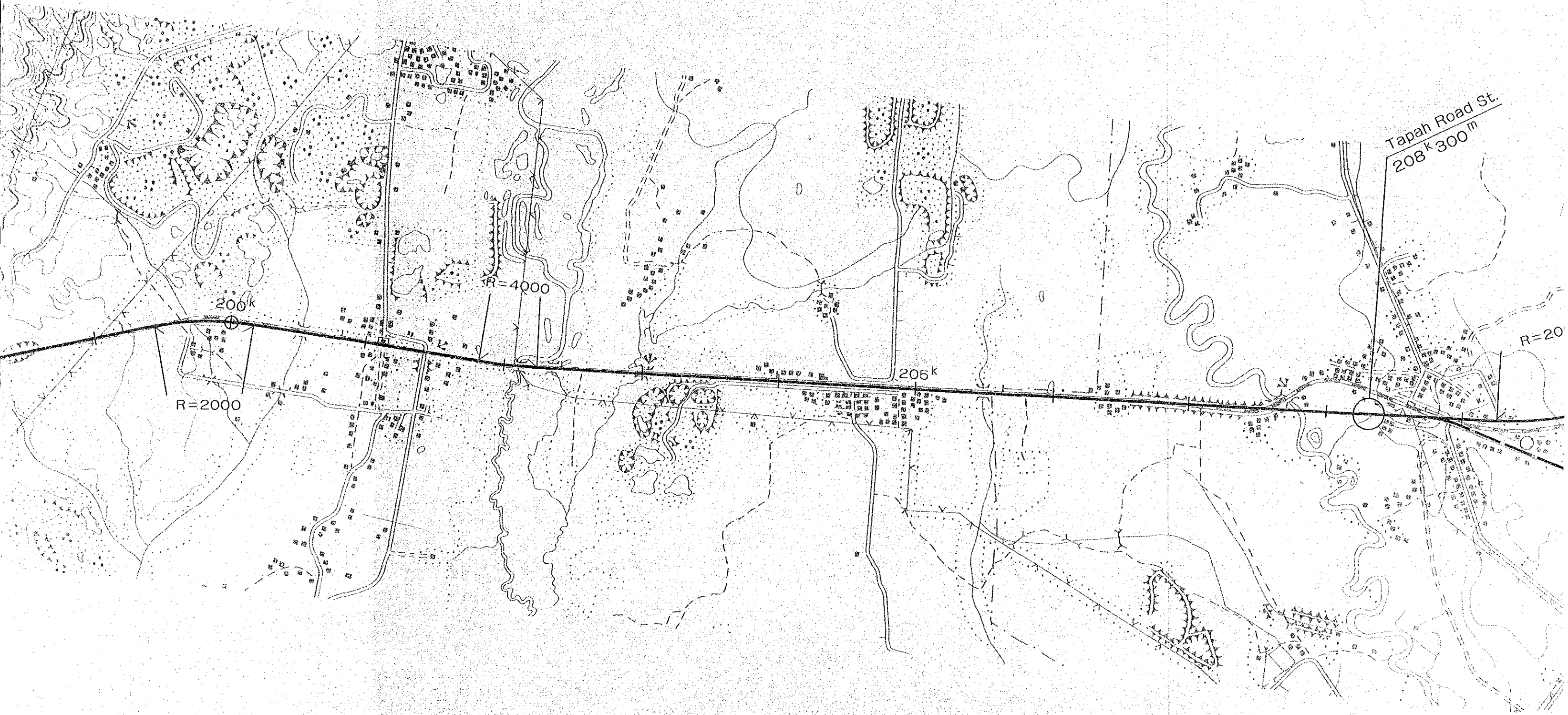
200k

R=2000

R=2000

R=2000

R=



Tapah Road St.
208k 300m

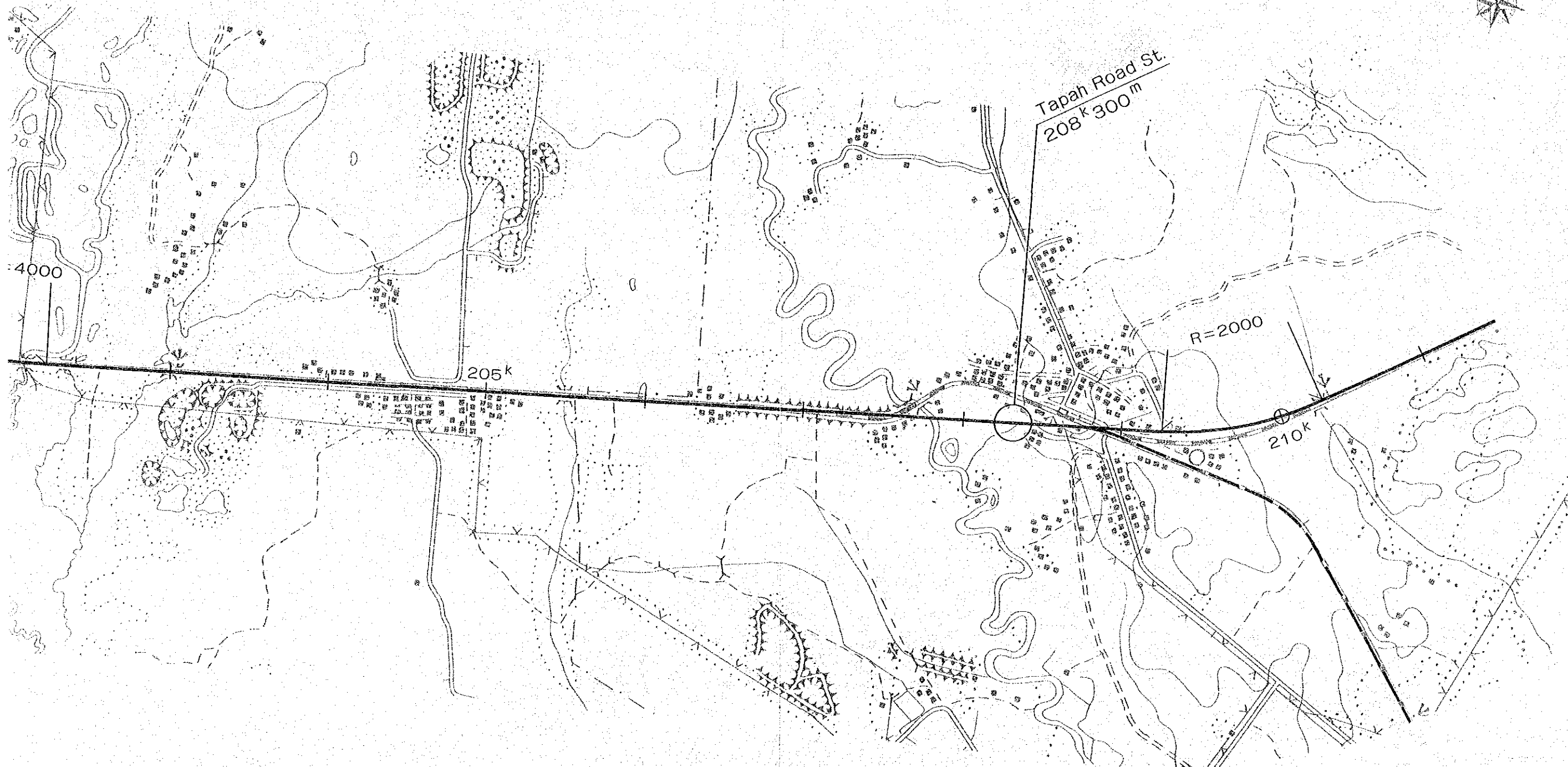
200k
R=2000

R=4000

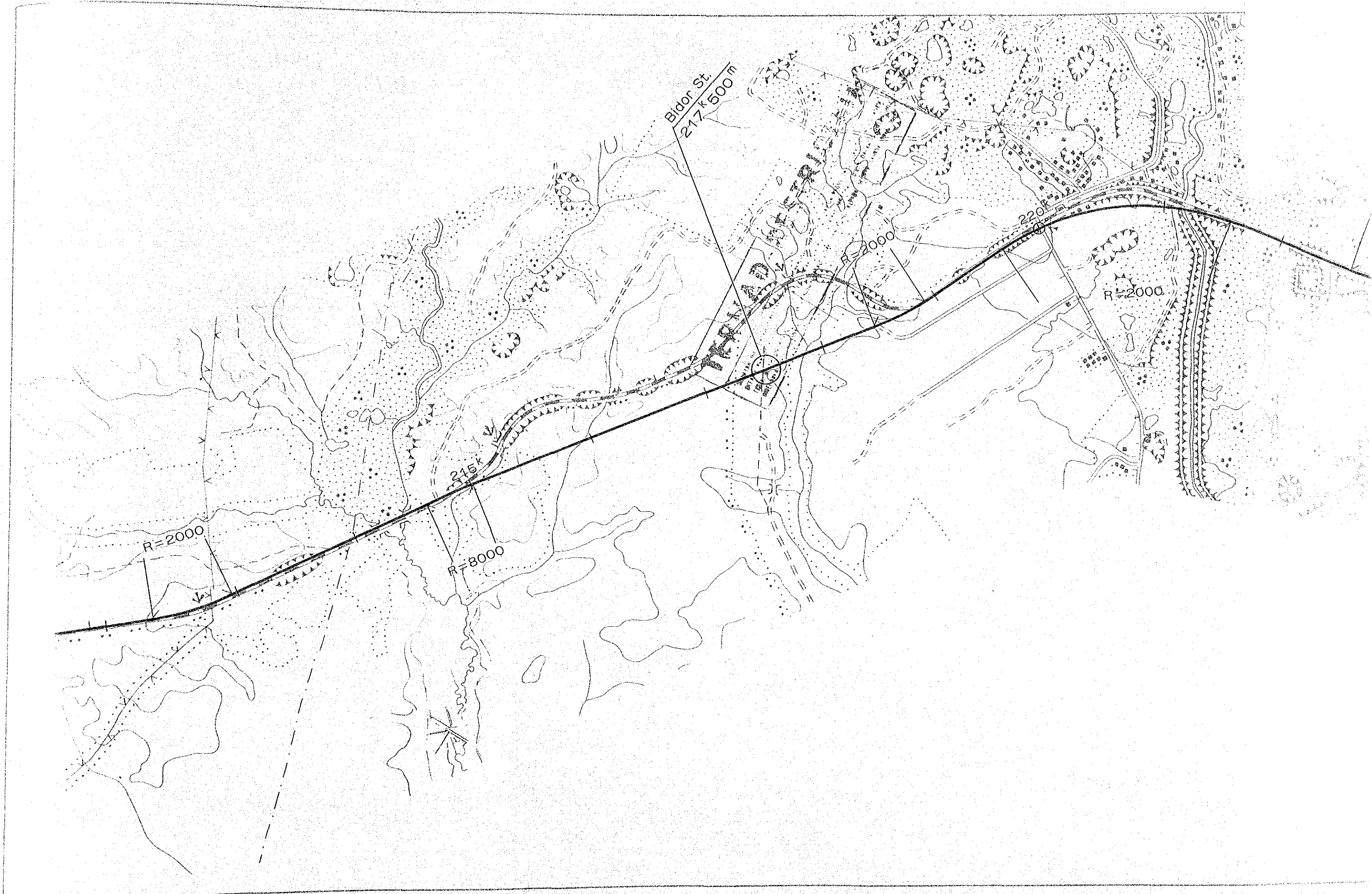
205k

R=20

TM
M



THE WEST COAST RAILWAY
MAIN LINE (Sheet 11 of 37)
Scale 1 : 25,000



Bidor St.
217 k 500 m

R=2000

R=8000

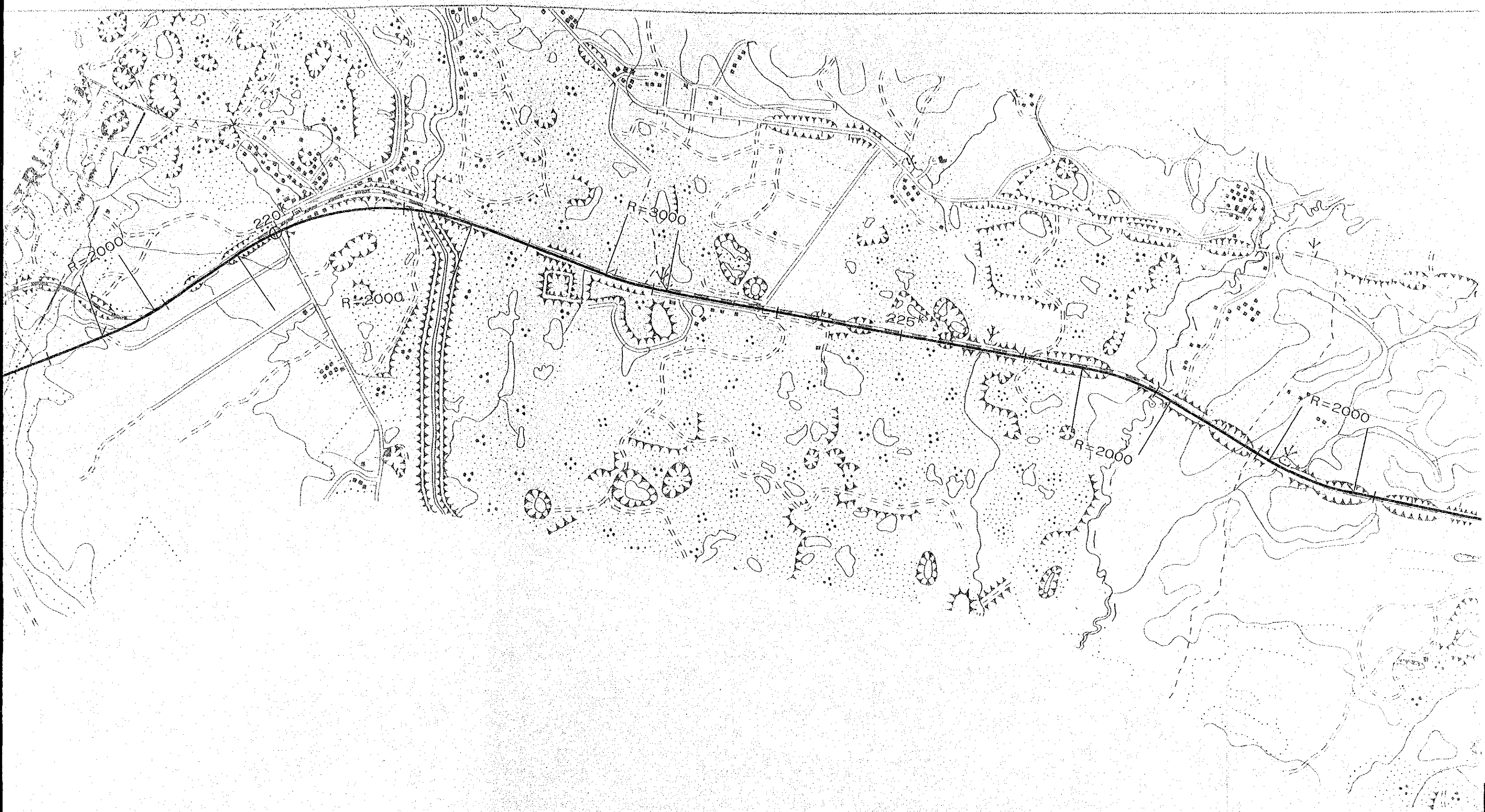
215k

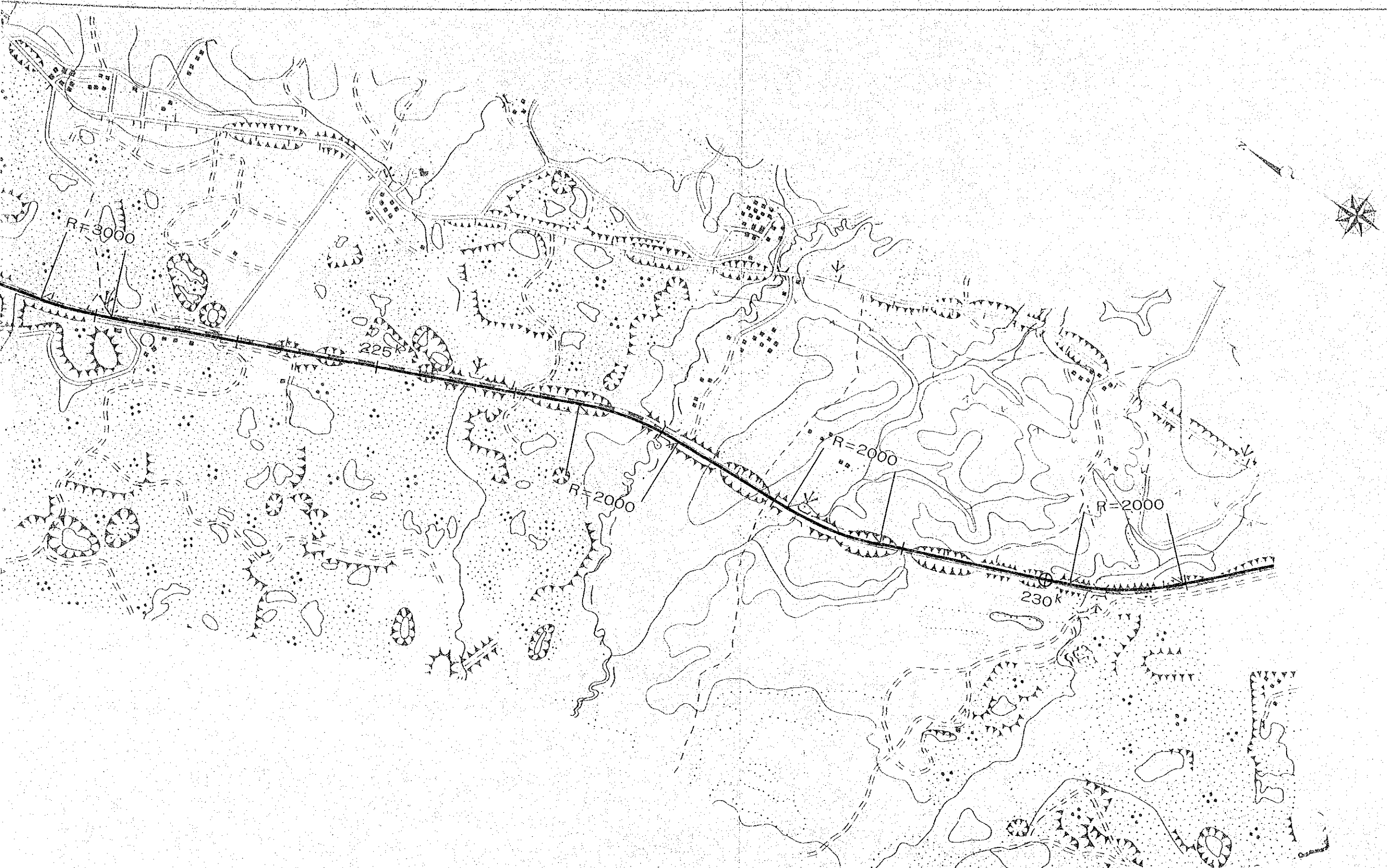
R=2000

R=2000

220

TRIPAD-STRIP

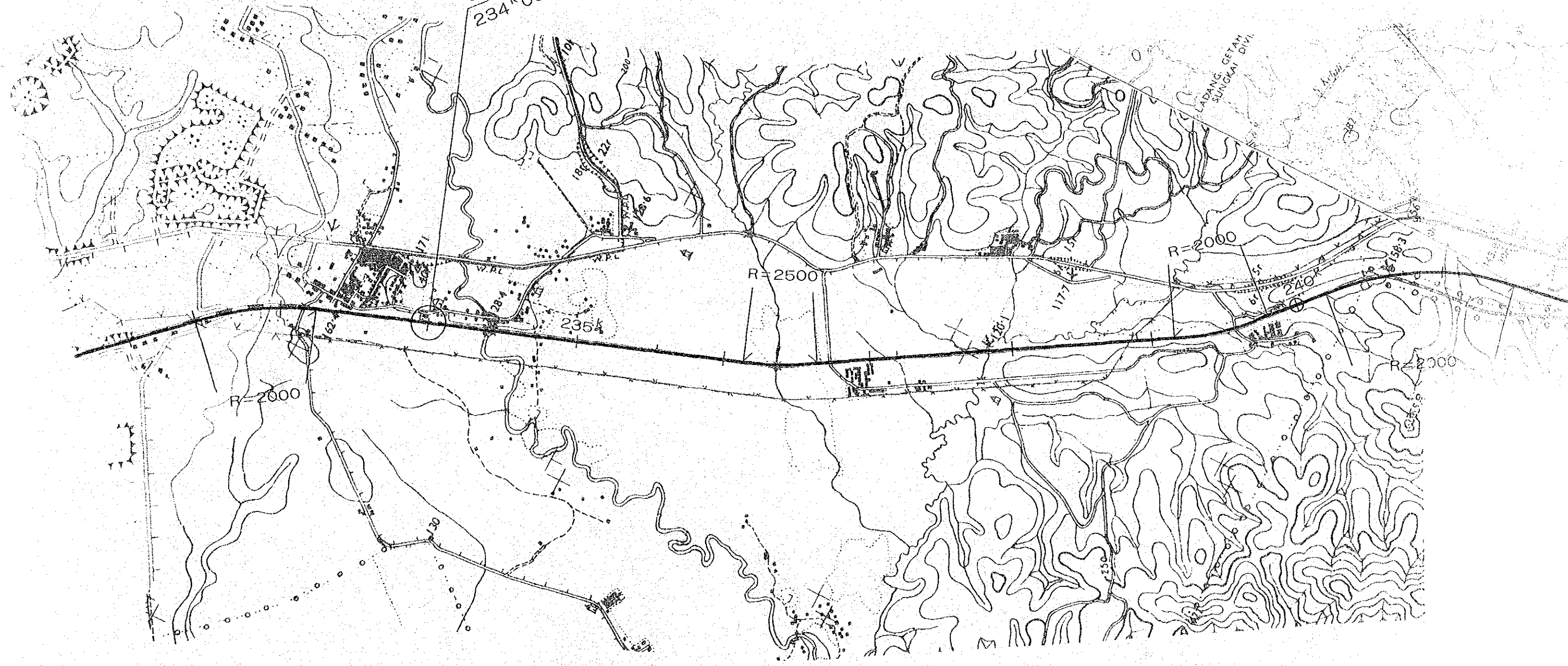




THE WEST COAST RAILWAY
MAIN LINE (Sheet 12 of 37)
Scale 1 : 25,000

Sungai St.
234'000 m

LADANG GETAH
SUNGKAI DIVI



R=2000

R=2500

R=2000

R=2000

2354

240R

158.3

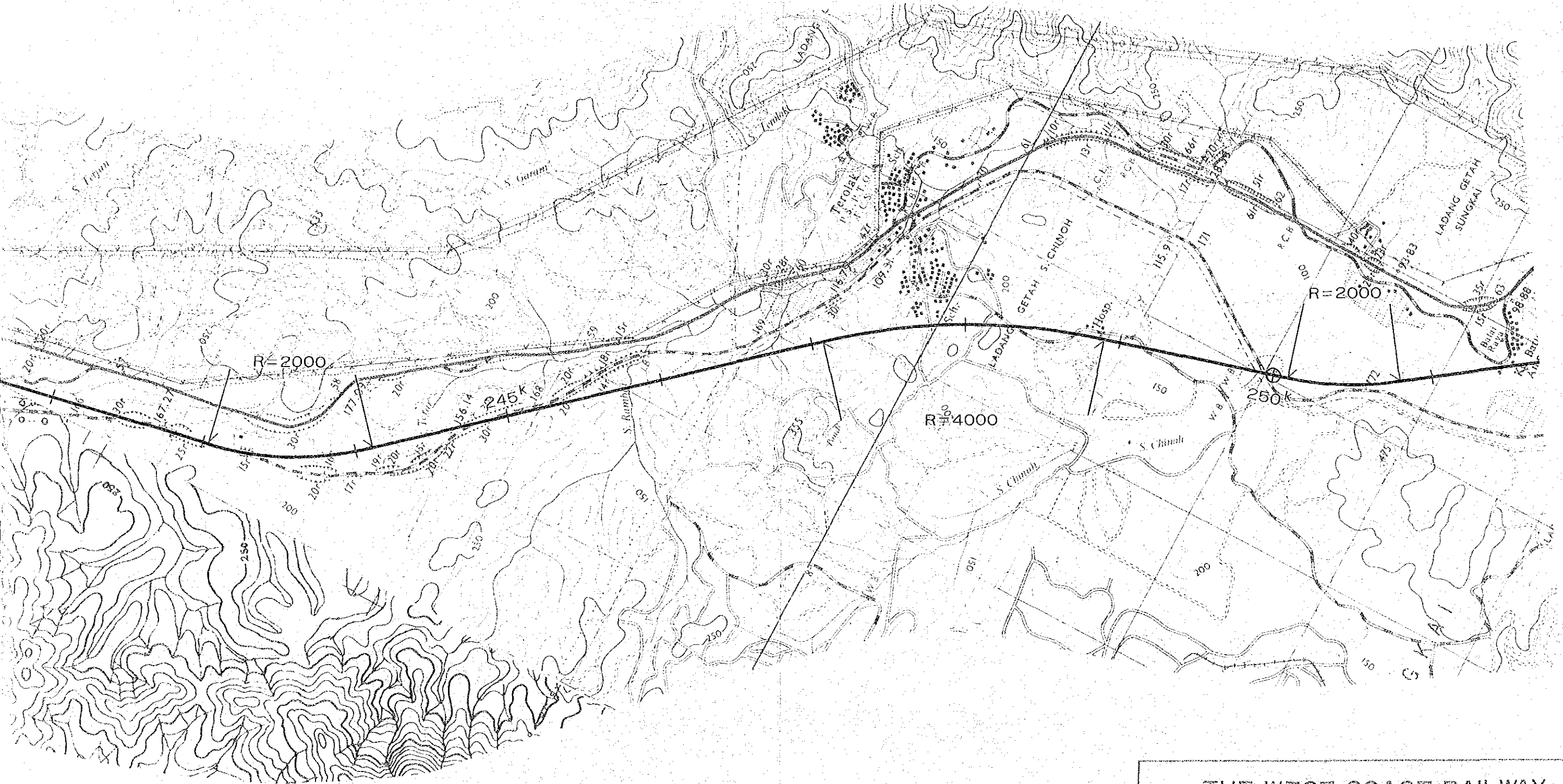
1177

1170.1

130

052

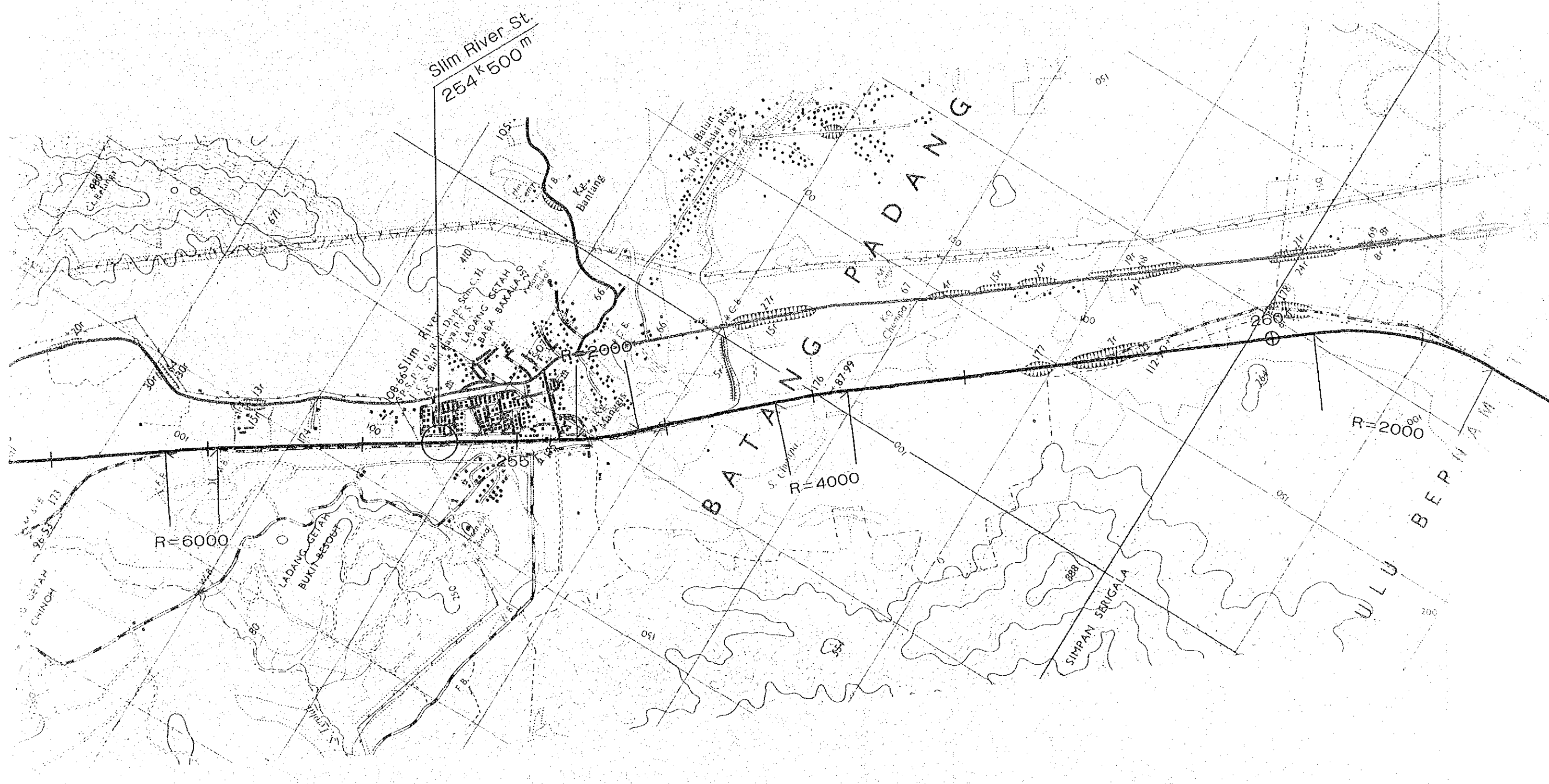


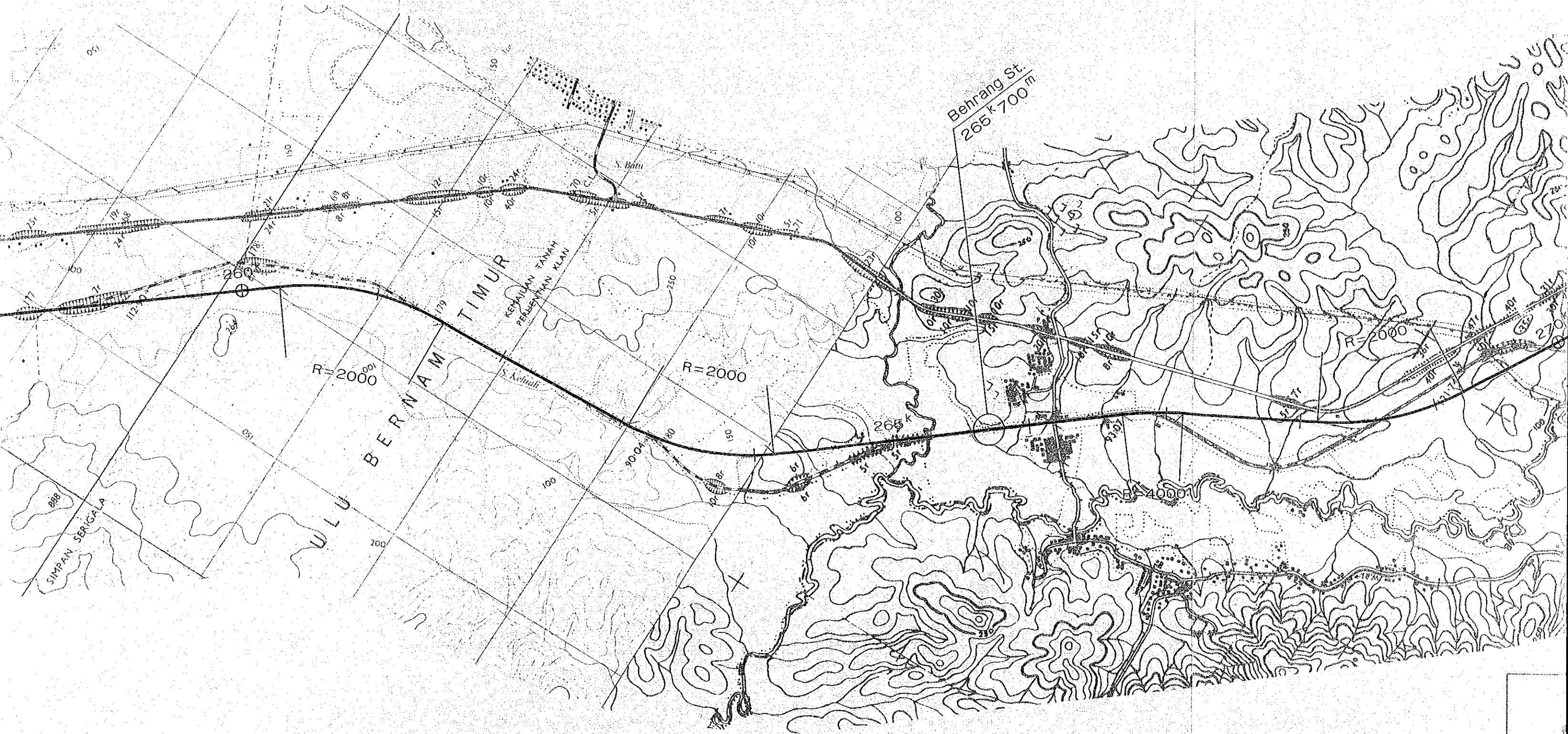


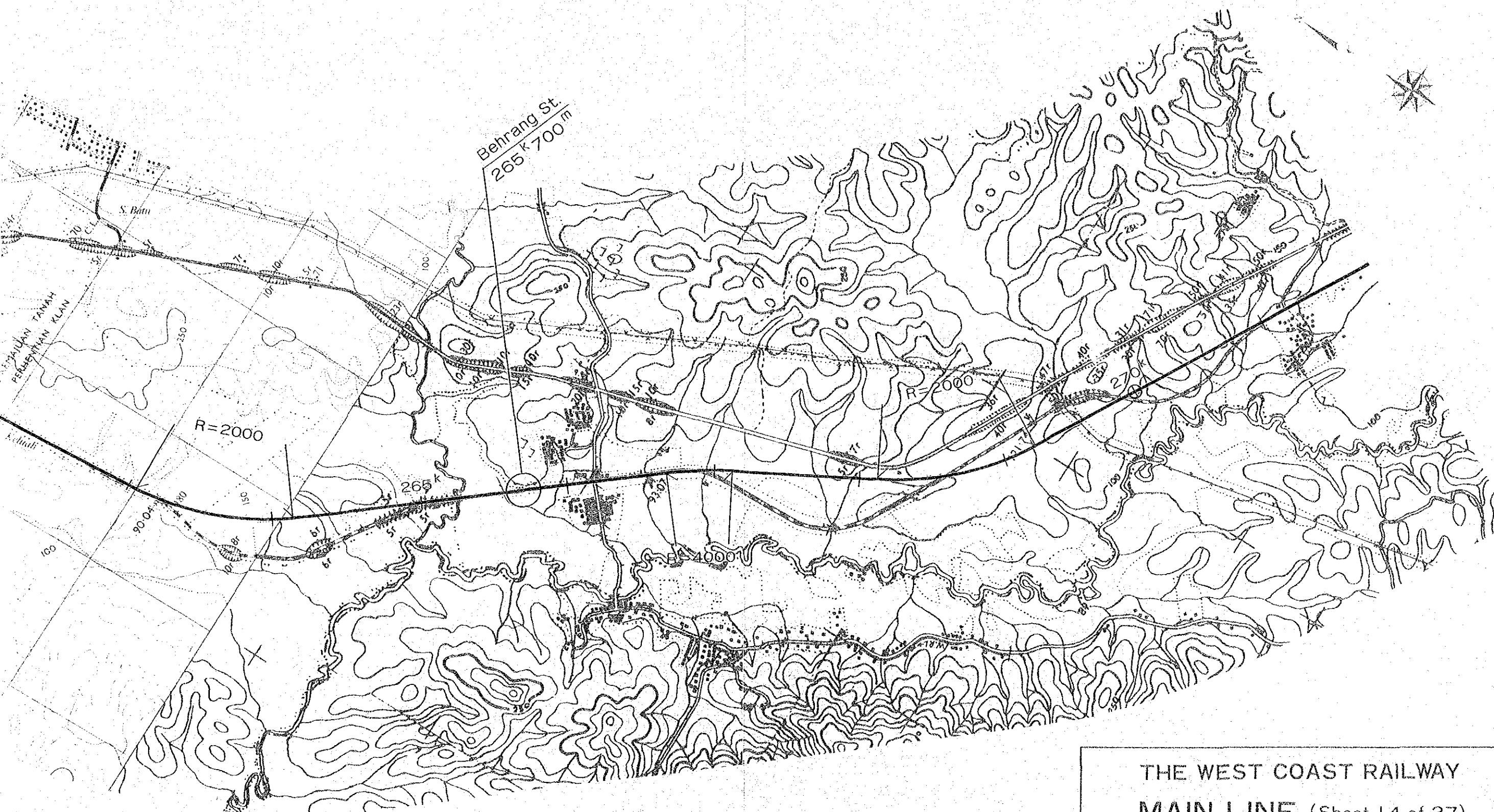
THE WEST COAST RAILWAY
MAIN LINE (Sheet 13 of 37)
Scale 1 : 25,000

Slim River St.
254 k 500 m

BATANG PADANG







THE WEST COAST RAILWAY
MAIN LINE (Sheet 14 of 37)
Scale 1 : 25,000