

(d) 旅客収入 1979年約45億円

(単位：千マレイドル)

年 度	1st CLASS		2nd CLASS		3rd CLASS		合 計	
	収 入	前年比	収 入	前年比	収 入	前年比	収 入	前年比
1974	1,993	—	10,171	—	21,170	—	33,334	—
1975	2,273	114	11,158	113	21,735	103	35,476	106
1976	2,510	110	12,205	106	25,005	115	39,720	111
1977	2,069	82	14,192	115	29,010	116	45,271	114
1978	1,825	88	15,901	112	28,115	97	45,841	101
1979 (1月~3月)	1,288	—	11,316	—	19,542	—	33,146	—
1980							44,400	

(e) 日本の国鉄との比較

	1979年度 マレーシア鉄道	1979年度 日本国有鉄道
営業キロ (Km)	1,634 Km	21,322 Km
電化キロ (Km)	0 Km	8,279 Km
軌 間 (mm)	1,000 mm	1,067 mm
旅客輸送量 (人・キロ)	1.3 億人・キロ	1.947 億人・キロ
貨物輸送量 (トン・キロ)	1.35 億トンキロ	4.23 億トンキロ
車 両 数 (両)		
蒸気機関車	0	5 両
ディーゼル #	140 両	2,125 両
電気 #	0	1,936 両
電 車	0	17,462 両
客 車	358 両	11,757 両 (うちディーゼルカー5,225 両)
貨 車	3,514 両	99,845 両
職 員 数 (人)	9,985 人	420,815 人
収 入	約 150 億円	27,000 億円 (180 倍)
支 出	約 200 億円	36,000 億円 (180 倍)

(2) 国家開発計画における鉄道整備の位置付け

日本の明治以降の近代化の過程に照らしても、一般論として、発展途上の国として、諸開発計画の前提として、まず鉄道の建設整備にアプライオリな力点を置くことは正しい。マ国として、19世紀末以来の、いわば、償却済みのインフラストラクチャとしての鉄道整備を最重要政策とすることに誤りはない。

たゞ、現マレーシア5ヶ年計画中铁道投資は僅々300億円を出ず、全5ヶ年計画中予定投資総額の0.7%にすぎないのを、マ鉄道全線の標準軌化、複線化、電化は、マ側の過小な見積りによっても10年間約1兆円とされ、これを現5ヶ年計画中にひき直せば、

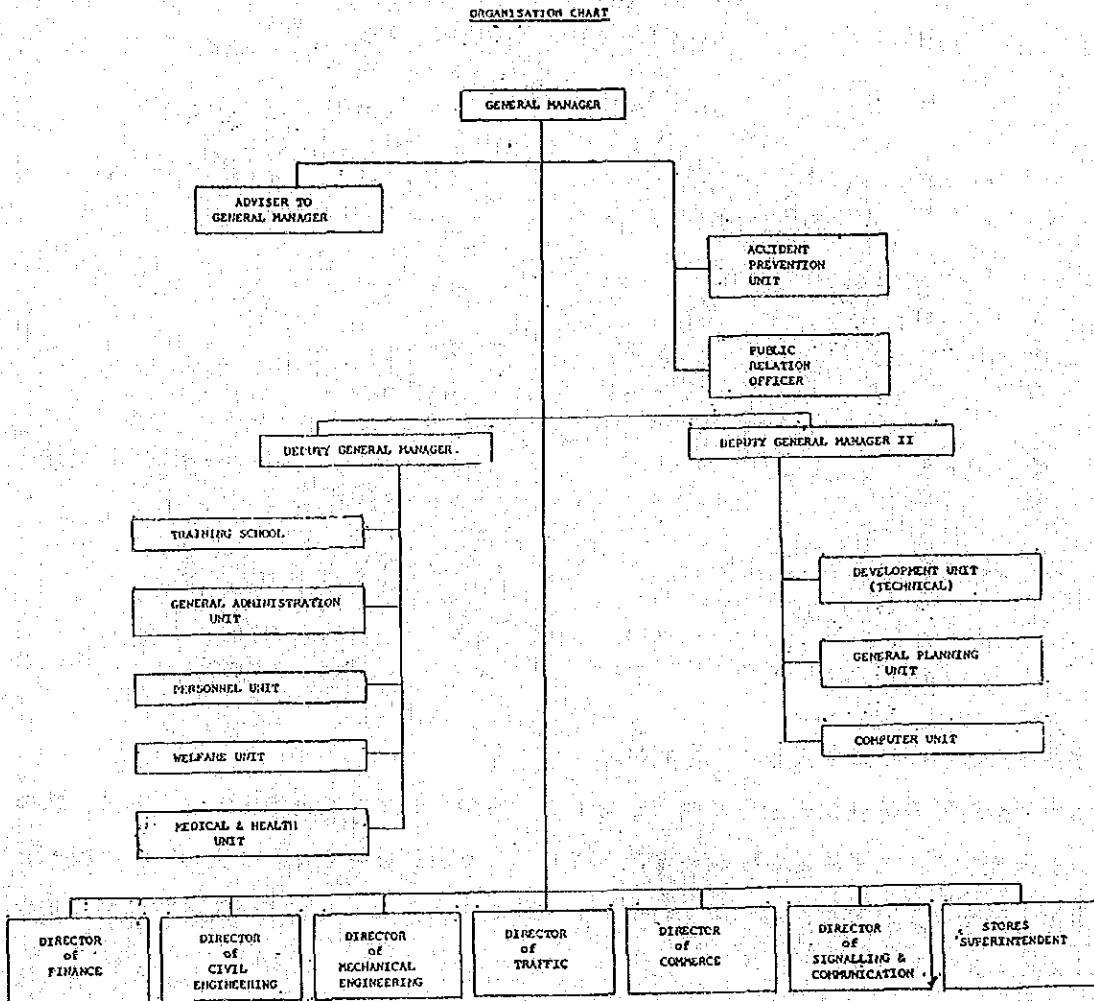
$0.7\% \times \frac{5 \text{年}}{10 \text{年}} \times \frac{1 \text{兆円}}{300 \text{億円}} \approx 12\%$ を占める巨大投資項目とすることである。

鉄道以外の開発投資への影響の考慮、運転政策の根本的変更等、幾多の全社会的計画要素の
 変革の必要性が予想される。

要は、マ国家経済フレームの中で、現実的に可能な鉄道投資額を策定し、その枠内で、一定
 計画期間中の同国総合輸送力を最大にするには、いかなる鉄道整備計画とすべきか、又、その
 点からフィードバックして、鉄道投資額はいかにあるべきかを検討すべきであり、この意味で
 日本側の主張するマスタープラン策定はその一環として、是非ともこの点を解明するに足るも
 のとする必要がある。

(3) マレーシア国鉄の概況

(i) マレーシア国鉄組織図



Malayan Railway

History

The Malayan Railway (Keretapi Tanah Melayu or KTM) had its beginnings in the latter part of the 19th century. The rapid development of the tin export industry during the period led to the construction of railway lines to facilitate the transportation of tin to the coast. Thus the first railway built was an eight-mile route in Perak linking Taiping with Port Weld which was opened to traffic in June 1885. The line was to serve the mining district of Larut.

In 1886, Selangor opened its own railway line, a 20-mile route linking Kuala Lumpur with Kelang. And in Negri Sembilan, a railway line was built in 1891, linking Seremban with Port Dickson. In 1893, a second line was built in Perak linking Tapah Road with Teluk Anson. From these beginnings were developed the various State railways which in 1901 were amalgamated to form the Federated Malay States Railways.

By 1903, the main line from Ipoh to Kuala Lumpur was completed. This was extended to Genas in 1906 and to Johor Bahru in 1909. The Singapore Government Railway which had been built in 1903 was bought and merged with the FMS Railway in 1913. With the completion of a line to Padang Besar on the Thai border in 1918, rail communication was made possible from Perlis in the north to Johor Bahru in the south. The next year saw the construction of the Causeway which, when completed in 1923, finally gave direct rail links from Singapore to Penang. The East Coast line (327 miles) was completed in 1931.

By 1940, the railway had become one of the most important forms of transportation in the country. It was then operating 250 trains a day. The Japanese Occupation of 1942-45 brought considerable damage to the railway system but it was rehabilitated under the British. Reconstruction work was delayed by the Emergency and was only completed in 1954. The following year, 26 main line diesel locomotives were ordered in the first phase of the railway's modernisation programme. Passenger services were improved with the purchase of diesel rail cars from Australia in 1958 and the construction of 12 trailers cars at Sentul Workshop. At the same time large-scale construction of wagons was also begun at Sentul.

In 1961, the Malayan Railway carried nearly 7½ million passengers and moved approximately four million tons of goods. The following year, Tan Sri Ahmad bin Perang became the first Malaysian to be appointed General Manager. However, the railway began to face competition from improved road transport in the 60s and this was a major factor for it incurring losses in this period. A development programme involving \$85 million was subsequently drawn up to transform the railway once more into an efficient and commercially viable organisation. As part of its modernisation plans, which included dieselisation, a training school was also set up in 1973. Today, the railway projects a new corporate image as it strives to provide up-to-date services to passengers and goods.

The Route

The main line along the west coast is 488 miles long. The east coast line is 327 miles long with a 13-mile branch line from Pasir Mas to Sungai Golok, connecting Malaysia with the State Railway of Thailand and providing an alternative route to Thailand from Singapore.

Management

The Malayan Railway Administration comes within the portfolio of the Transport Minister and is headed by a general manager appointed by the Yang di-Pertuan Agong on the recommendation of the Railway Service Commission. The general manager is advised by a Railway Board on which there is both official and unofficial representation on matters pertaining to policy.

Since 1901, there have been 14 general managers of the Railway. They are:

General Manager	Term
C E Spooner	1901 — 1909
P A Anthony	1910 — 1924
J Strachan	1927 — 1930
D H Elias	1933 — 1936
L M Stuart	1937 — 1941
Sir John Sanders	1946 — 1952
C G Harrison	1953 — 1958

D D Bartlett	1958 — 1959
G M Wheat	1959 — 1960
E T Williams	1960 — 1961
Tan Sri (Dato) Hj Ahmad Perang	1962 — 1967
Tuan Haji Waad bin Jamaluddin	1967 — 1971
Dato Shariff bin Hassan	1972 — 1975
Dato Ishak bin Tadin	1975 — 1981
Enik Ahmad Badri bin Mohd Basir	1981 —

Finances

The capital of the Malayan Railway which stands at \$332 million was wholly subscribed by the Government but the Railway operated on commercial lines is financially autonomous and self-accounting. The accounts are audited by the Auditor-General. The Railway has no power to borrow money and must look to the Government for funds for projects which cannot be financed from its revenue. It must pay its way as there are no subsidies from the Government.

Traffic

Passenger traffic: KTM carried 6.2 million passengers in 1979 as compared with 5.9 million in 1978. This marks a four per cent increase against the previous year and a 19.38 per cent decrease against 1960. In terms of revenue, however, there was a 150 per cent increase against 1960 and a 9.65 per cent increase against the previous year.

Goods Traffic: A total of 4.78 million tonnes of goods was carried in 1979 as against 4.1 in 1978 and 3.6 in 1960. This marks a 32.2 per cent increase against 1960 and a 15.44 per cent increase against 1978.

Sentul Workshop

Sentul Works dates from 1904 when, as a result of the linking-up of a number of constituent State and company-owned railways, it was decided to create a central workshop for the repair of locomotives and rolling stock. The total staff at present is in excess of 1,400. The works is capable of undertaking heavy repairs to locomotives as well as building coaches and wagons.

General Information

Breaking of Journey

Passengers holding tickets for distances over 200 km are allowed to break journey at any intermediate station for one day for every 200 km or part thereof in addition to the time occupied by the journey. Tickets must be endorsed by the Station Master at the alighting station immediately upon arrival of the train.

Refund of Unused Tickets

Passengers who have purchased tickets and are unable to use them can apply for refund of the cost of the tickets to the Station Master at the station where the tickets were obtained provided that the tickets were purchased by cash and application made before scheduled departure time of train for which the passengers were booked to travel.

In all other cases, tickets must be endorsed by the Station Master and the claims for refund must be submitted in writing to the District Traffic Superintendent within three months from date of purchase of the tickets. All refunds are subjected to a cancellation fee.

Lost Tickets

The Railway Administration is not bound to refund fares on tickets which have been lost or mislaid by passengers.

Tickets Availability

Tickets may be purchased on the day of travel or may be booked in advance to ensure availability. First and second class tickets may be purchased three months in advance inclusive of the day of travel at most of the large booking offices and stations. In the case of third class tickets they may be purchased 10 days in advance. Tickets for Ekspres Rakyat can also be purchased 10 days in advance inclusive of the day of travel.

Luggage Allowance

Passengers are allowed to carry personal luggage free of charge as follows: First class 60 kg; second class 35 kg; and third class 25 kg. Children paying half fare are allowed half the weight allotted for adults according to the class of tickets.

Children Fares

Children between the ages of four and 12 are charged half the adult fare and children under four years can travel free of charge.

Concession Rates

Group Travel

KTM offers concession rates for adult groups for return journeys between any stations (excluding Ekspres Rakyat) as follows:

- 1 For a group of 10 to 49 adults: 25 per cent discount from the normal rate.
- 2 For a group of 50 to 99 adults: 33 per cent discount from the normal rate.
- 3 For a group of 100 or more adults: 50 per cent discount from the normal rate.

You may apply in writing one month in advance for the concession to the District Superintendent, KTM at Butterworth, Ipoh, Kuala Lumpur, Port Klang, Gemas, Singapore and Krai. Journeys will be arranged as requested.

Students

School and University students may purchase third class return tickets. The concession is 33 per cent of the normal rate for travel between all stations. This rate is available upon production of forms endorsed by headmaster's, principals and vice-chancellors. The forms are bound in books and sold at 35 each at all KTM stations. This concession excludes Ekspres Rakyat and is available throughout the year.

Handicapped Persons

Handicapped persons may purchase tickets for all classes at 50 per cent discount for travel between all stations. An additional payment is charged for express and berth services.

Senior Citizens

Persons above 65 years are entitled to a discount of 50 per cent. An additional payment is charged for express and berth services.

Pensioners and Wives, Members of Ex-Servicemen's Association

Pensioners and their wives (limited to two wives only) and members of the ex-servicemen's association may purchase tickets at a discount rate of 33 per cent for travel between stations. Tickets are issued subject to the filling of forms available at all KTM stations. The tickets are good for all train services and are issued throughout the year. Return journeys must be made 30 days from the date of the outward journey.

Pemadam Members

Pemadam members may purchase one-way tickets for all classes at 50 per cent discount for travel between Ipoh, Batu Gajah and Kuala Lumpur stations. They are required to show authorisation letters from the Pemadam office before tickets can be issued. These tickets may be obtained throughout the year but are not valid for the Ekspres Rakyat services.

Police/Military Personnel and their families

Police/Military personnel and their families (wives and children) may purchase one-way tickets in cash for all classes at 25 per cent discount rates. Relevant forms have to be endorsed and issued by the officer-in-charge of the respective military/police unit. This discount is available for all the services offered but an extra payment is levied for the express and berth services.

Deaf/Mute/Blind Persons

All such persons are entitled to a 50 per cent discount for all classes between all stations. The tickets are issued upon production of the travel voucher from the Social Welfare Department or the Federation of the School of the Deaf. This discount is available throughout

the year, but an extra payment is charged for the express and berth services.

Haji Pilgrims and Entourage

Haji Pilgrims and their entourage (not exceeding 10 adults per pilgrim) may purchase tickets to and fro for all classes from any station to Kuala Lumpur and Butterworth at 33 per cent discount. The tickets are issued after production of a relevant confirmation letter from the Manager/Supervisor of the Lembaga Urusan dan Tabung Haji or the District Officer when purchasing the tickets. Extra payment is charged for travelling on Ekspres Rakyat and for berths. Return journeys may take four months (120 days) from the date the ticket is purchased. These tickets are only issued during the pilgrimage season.

Scouts/Girl Guides/Red Crescent Members

All members of these uniformed units are entitled to a 25 per cent discount on all tickets. A confirmation letter from the Commissioner of Scouts/Girl Guides/Red Crescent is required before tickets are issued. They are also required to be in uniform while travelling. Return journeys have to be taken 30 days after the first journey. Extra payment is levied on berths. This discount is available throughout the year.

International Express Malaysia/Thailand

From Butterworth a thrice weekly service runs to Bangkok and vice versa, at the following times:

- Butterworth departs 0750hrs Monday, Wednesday and Friday
Bangkok departs 0645hrs Tuesday, Thursday and Saturday
- Bangkok departs 1610hrs Monday, Wednesday and Saturday
Butterworth departs 1630hrs Tuesday, Thursday and Sunday

ASA Coach

A special coach (A.S.A.) conveying through first class passengers to Bangkok departs Kuala Lumpur every Sunday at 2200hrs. This coach is attached to the Night Express (North Star) which goes to Butterworth. From there it is attached to the International Express leaving Butterworth at 0750hrs every Monday. The passenger fares from the main stations in Peninsular Malaysia to Bangkok are:

	1st class	2nd class
Singapore	M\$145.90	M\$71.00
Kluang	M\$143.30	M\$65.50
Gemas	M\$122.70	M\$60.00
Tampin	M\$117.40	M\$57.50
Seremban	M\$112.10	M\$55.10
K.Lumpur	M\$103.70	M\$51.10
Kuala Kubu Roa. J	M\$ 97.30	M\$48.10
Ipoh	M\$ 81.50	M\$50.70
Butterworth	M\$ 65.10	M\$32.90
Bukit Mertajam	M\$ 63.50	M\$32.20
Alor Star	M\$ 54.00	M\$27.70

Only first and second class accommodation is available on the International Express. Passengers are required to pay an additional charge of M\$2.50 per person for single journey which is additional to the normal fares. Sleeping accommodation is available. Charges additional to the normal fares are:

1st class air-con cabin (single berth)	\$28.20
(double berth)	\$18.80
1st class non air-con	\$12.50
2nd class lower berth	\$ 9.40
2nd class upper berth	\$ 6.30
seat in air-con 1st class day coach	\$ 3.80

Diesel rail car: Butterworth—Haadyai

A fast daily service operates between Butterworth and Haadyai and the trains run to the following schedules:

Butterworth	departs	0650hrs
Bukit Mertajam	departs	0708hrs

Sungei Petani	"	0732hrs
Alor Star	arrives	0840hrs
Arau	departs	0843hrs
Padang Besar	departs	0922hrs
Arau	arrives	0950hrs
Alor Star	departs	1105hrs
Sungei Petani	departs	1444hrs
Bukit Mertajam	arrives	1522hrs
Butterworth	departs	1530hrs
Haadyai	"	1629hrs
Haadyai	"	1712hrs
Padang Besar	arrives	1741hrs
+ Thai time	arrives	1115hrs (Thai time)
Fares:	departs	1130hrs (Thai time)
Butterworth — Haadyai	arrives	1240hrs
2nd class — M\$10.90		
3rd class — M\$ 7.10		

マレーシア国鉄時刻表

BUTTERWORTH-KUALA LUMPUR BUTTERWORTH											
ER	E	EK	B	E		EK	E	ER	B	E	
19	1	23	5	3		24	2	18	6	4	
0815	0845	1355	2035	2200	b. Butterworth	t.	1325	1730	2125	0540	0715
-	0903	-	2054	2219	t. B. Mertajam	t.	-	1700	-	0510	0644
0940	1036	1517	2250	0007	t. Taiping	t.	1156	1514	1953	0322	0457
1019	1140	1555	2347	0102	t. K. Kangsar	t.	1119	1427	1914	0228	0407
1112	1243	1639	0059	0213	t. Ipoh	b.	1032	1323	1824	0110	0300
1115	1253	1641	0120	0225	b. Ipoh	t.	1030	1313	1821	0049	0247
-	1317	-	0139	0250	t. Batu Gajah	t.	-	1254	-	0027	0225
1152	1345	-	0211	0321	t. Kampar	t.	-	1227	1743	2354	0139
1207	1402	-	0230	0342	t. T. Road	t.	-	1156	1719	2325	0112
-	1521	-	0359	0505	t. T. Malim	t.	0841	1040	-	2200	2350
1435	1725	1945	0555	0700	t. Kuala Lumpur	b.	0730	0900	1500	2010	2200

KUALA LUMPUR-SINGAPORE-KUALA LUMPUR												
EK	E	ER	B	E	B		ER	K	EK	B	E	B
15	7	19	9	11	117		18	8	14	10	12	118
0730	0900	1505	2015	2200	b. Kuala Lumpur	t.	1430	1720	1955	0605	0705	
-	0939	-	2057	-	t. Kajang	t.	-	1640	-	0521	0621	
0840	1025	1618	2148	2330	t. Seremban	t.	1318	1539	1846	0419	0521	
0919	1117	1703	2246	0028	t. Tampin	t.	1233	1445	1807	0315	0422	
-	1224	-	2400	0137	t. Gemas	b.	-	1345	-	0210	0320	
-	1235	-	0015	0225	b. Gemas	t.	-	1335	-	0141	0257	1855
1026	1302	1821	0044	0303	t. Segamat	t.	1123	1259	1659	0054	0219	1817
1143	1449	1943	0259	0450	t. Kluang	t.	0950	1057	1536	2254	0024	1640
-	1601	2036	0413	0601	t. Kulal	t.	-	0957	-	2149	-	1534
1259	1633	2106	0449	0636	t. J. Bahru	t.	0828	0917	1421	2034	2234	1500
1325	1730	2135	0555	0725	t. Singapore	b.	0800	0845	1355	2000	2200	1430

TUMPAT - GEMAS - TUMPAT																
B	B	B	B	C	E	B		E	C	B	B	B	B	B	B	B
391*	409*	389	395	411	21	381		22	108	380	410*	412	394	390	392*	
				0615	1000	1325	b. Tumpat	t.	1800	0800	1145		1615			
				0639	1021	1348	t. Wakaf Bahru	t.	1726	0733	1113		1533			
				0659	1045	1408	t. Pasir Mas	t.	1705	0645	1038		1510			
				0839	1210	1547	t. Krai	b.	1550	0445	0900		1330			
				0600	0915	1220	b. Krai	t.	1534		0808		1310	1935		
				0857	1230	1510	t. Gua Musang	b.	1232		0500		0945	1640		
				0430	0940	1300	b. Gua Musang	t.	1227				0934	1626		
				0650	1206	1611	t. Kuala Lipis	b.	1015				0655	1410		
1415	0430	0710					b. Kuala Lipis	t.	0946		0626			1305	1606	
1504	0519	0759					t. Mela	b.	0903		0530			1214	1515	
							b. Mela	t.	0902					1213		
							t. Jerantut	t.	0812					1140		
							t. Kuala Krau	b.	0732					1105		
							b. Kuala Krau	t.	0722							
							t. Mentakab	t.	0633							
							t. Gemas	b.	0330							

BANGKOK-PADANG BESAR-BUTTERWORTH											
K.B	K.C	K.E	K.B	K.E		K.B	K.E	K.B	K.E	K.B	K.E
K.141	K.143	K.17				K.138	K.16	K.140			
		1610*	b. Bangkok	t.	0645*						
		1028*	t. Haadyai	b.	1247*						
1145*		1043*	b. Haadyai	t.	1120*	1232*					
1340		1230	t. Padang Besar	b.	1125	1235					
1400	1630	1500	b. Padang Besar	t.	1032	1116	1454				
1532	1825	1615	t. Alor Star	t.	0908	1000	1256				
1740	2150	1816	t. Bukit Mertajam	t.	0708	0813	1021				
1810	2240	1845	t. Butterworth	b.	0650	0755	0955				

TUMPAT-RANTAU PANJANG-TUMPAT											
C	C	C		C	C	C		C	C	C	
431	435	437		432	436	438		432	436	438	
0500	1110		b. Tumpat	t.	0850	2045					
0515	1125		t. Palekbang	b.	0838	2030					
0601	1137	1605	b. Palekbang	t.	0837	1441	2029				
0608	1144	1612	t. Wakaf Bahru	t.	0830	1434	1953				
0627	1202	1702	t. Pasir Mas	t.	0811	1400	1931				
0704	1237	1740	t. R. Panjang	b.	0740	1330	1900				

NOTA - NOTES

E = Ekspres/Express
 IE = Ekspres Antarabangsa/International Express
 ER = Ekspres Rakyat/Express Rakyat
 EK = Ekspres KTM/Express KTM
 C = Tren Campus/Mixed Train
 B = Tren Biasa/Ordinary Train
 b = Bertolak/Departure
 t = Tiba/Arrival

TAPAH ROAD-TELUK ANSON-TAPAH ROAD											
C	C	C		C	C	C		C	C	C	
191	193	195		192	194	196		192	194	196	
0610	1125	1515	b. Taph Road	t.	1022	1503	1951				
0702	1217	1609	t. T. Anson Town	t.	0926	1400	1856				
0709	1224	1616	t. T. Anson Wharf	b.	0920	1400	1850				

K.L.-PORT DICKSON-K.L.											
B	B	B		B	B	B		B	B	B	
411	413	415		412	414	416		412	414	416	
0750			b. Kuala Lumpur	t.	1920						
0822			t. Kajang	t.	1847						
0903			t. Seremban	t.	1803						
0949			t. Port Dickson	b.	1720						

PENERANGAN - INFORMATION

● EKSPRES ANTARABANGSA bertolak dari Butterworth ke Bangkok pada hari Isnin, Rabu, Jumaat DAN dari Bangkok ke Butterworth pada hari Isnin, Rabu, Sabtu sahaja/INTERNATIONAL EXPRESS departs Butterworth to Bangkok on Monday, Wednesday, Friday AND from Bangkok to Butterworth on Monday, Wednesday, Saturday only.

● Koc Mesia bertolak dari Kuala Lumpur (jam: 8.10 malam) pada hari Khamis dan tiba Haadyai pada hari Jumaat (jam: 12.20 tengah hari). Koc ini balik dari Haadyai pada hari Ahad (jam: 12.45 tengah hari) dan tiba Kuala Lumpur pada hari Isnin (jam: 5.20 pagi)/Mesia Coach departs Kuala Lumpur (time: 8.10 pm) on Thursday and arrives Haadyai on Friday (time: 12.20 pm). This coach returns from Haadyai on Sunday (time: 12.45 pm) and arrives Kuala Lumpur on Monday (time: 5.20 am).

● TAMBANG KONCESSI diadakan untuk perjalanan bagi pesara-pesara, ahli Persatuan Bekas Perajurit, orang tua melebihi umur 65 tahun, penuntut sekolah, orang cacat, ahli Tentera/Police, Bakal Haji dll./CONCESSION FARE is available for travel for pensioner, member of Ex-servicemen Association, senior citizen above 65 years, student, handicapped person, member of Armed Forces/Police, Mecca Pilgrims etc.

Bayaran Tambahan/Supplementary Charges

Bayaran tempat tidur/Berth charge (KTM/MR)

Kelas 1/1st class - \$15.00 berhawa dingin/air conditioned
 Kelas 1/1st class - \$ 7.50 biasa/ordinary
 Kelas 2/2nd class - \$ 4.00 atas/supper
 Kelas 2/2nd class - \$ 6.00 bawah/lower

(Singapore/K. Lumpur - K. Lumpur/Butterworth - K. Lumpur/Tumpat - Singapore/Tumpat)

Bayaran Tempat Tidur Ekspres Antarabangsa/International Express Berth Charge

Kelas 1/1st class - \$22.00 berhawa dingin/air conditioned
 Kelas 1/1st class - \$14.30 biasa/ordinary
 Kelas 2/2nd class - \$10.50 bawah/lower
 Kelas 2/2nd class - \$ 7.20 atas/supper

Bayaran teren ekspres/express train charges \$2.80 (Butterworth/Bangkok - Bangkok/Chiangmai)

(TERTAKLUK KEPADA PINDAAN DALAM MASA YANG SENGKAT/SUBJECT TO ALTERATION AT SHORT NOTICE)

Statistics - Peninsular Malaysia

(Source: Department of Statistics)

ESTIMATED MID-YEAR POPULATION

Year	Persons	Males	Females
1966	8,032,287	4,060,462	3,971,825
1967	8,228,478	4,152,540	4,075,938
1968	8,405,418	4,235,102	4,170,316
1969	8,583,635	4,323,901	4,259,734
1970	8,774,564	4,417,307	4,357,257
1971	9,017,920	4,538,353	4,479,567
1972	9,262,688	4,660,029	4,602,659
1973	9,502,131	4,778,790	4,723,341
1974	9,742,211	4,898,275	4,843,936
1975	9,997,252	5,024,850	4,972,402
1976	10,242,352	5,147,104	5,095,248
1977	10,510,105	5,280,667	5,229,438

DISTRIBUTION OF POPULATION BY AGE-GROUPS (1970 CENSUS)

Age-Group	Persons	Males	Females
0 - 4	1,370,428	698,718	671,710
5 - 9	1,357,800	692,375	665,425
10 - 14	1,197,886	606,849	591,037
15 - 19	976,597	484,096	492,501
20 - 24	744,936	366,394	378,542
25 - 29	549,683	273,199	276,484
30 - 34	534,171	265,091	269,080
35 - 39	420,352	204,883	215,469
40 - 44	373,721	186,606	187,115
45 - 49	310,228	152,570	157,658
50 - 54	275,817	139,890	135,927
55 - 59	223,353	117,210	106,143
60 - 64	194,868	101,519	93,349
65 and over	279,717	145,245	134,472
Total	8,809,557	4,434,645	4,374,912

AREA AND POPULATION BY STATES (1970 CENSUS)

Serial States No	State	Population *			Density per sq mile
		Sq Miles	Total	Females	
1	Johor	7,330	1,277,180	635,622	174
2	Kedah	3,639	954,947	474,304	262
3	Kelantan	5,765	684,738	345,736	119
4	Malaka	637	404,125	206,475	634
5	Negeri Sembilan	2,565	481,563	239,838	188
6	Pahang	13,886	504,945	243,159	36
7	Pulau Pinang	399	776,124	388,505	1,945

Distances in miles irrespective of road conditions

ROAD DISTANCES/MALAYSIA

From	To	Distance (miles)
Alor Star	Alor Star	117
Alor Star	Butterworth	164
Alor Star	Johor Bahru	526
Alor Star	Kangar	308
Alor Star	Kluang	481
Alor Star	Kota Bharu	680
Alor Star	Kuala Kangsar	132
Alor Star	Kuala Lumpur	299
Alor Star	Malaka	391
Alor Star	P Dickson	355
Alor Star	P Swettenham	324
Alor Star	Seremban	340
Alor Star	Singapore	543
Alor Star	Taipung	340
Butterworth	Butterworth	60
Butterworth	Johor Bahru	526
Butterworth	Kangar	308
Butterworth	Kluang	481
Butterworth	Kota Bharu	680
Butterworth	Kuala Kangsar	132
Butterworth	Kuala Lumpur	299
Butterworth	Malaka	391
Butterworth	P Dickson	355
Butterworth	P Swettenham	324
Butterworth	Seremban	340
Butterworth	Singapore	543
Butterworth	Taipung	340
Johor Bahru	Johor Bahru	149
Johor Bahru	Kangar	372
Johor Bahru	Kluang	513
Johor Bahru	Kota Bharu	712
Johor Bahru	Kuala Kangsar	175
Johor Bahru	Kuala Lumpur	429
Johor Bahru	Malaka	487
Johor Bahru	P Dickson	339
Johor Bahru	P Swettenham	353
Johor Bahru	Seremban	372
Johor Bahru	Singapore	186
Johor Bahru	Taipung	177
Kangar	Kangar	145
Kangar	Johor Bahru	558
Kangar	Kluang	247
Kangar	Kota Bharu	513
Kangar	Kuala Kangsar	203
Kangar	Kuala Lumpur	487
Kangar	Malaka	448
Kangar	P Dickson	339
Kangar	P Swettenham	353
Kangar	Seremban	372
Kangar	Singapore	186
Kangar	Taipung	177
Kluang	Kluang	203
Kluang	Johor Bahru	513
Kluang	Kangar	247
Kluang	Kota Bharu	712
Kluang	Kuala Kangsar	175
Kluang	Kuala Lumpur	429
Kluang	Malaka	487
Kluang	P Dickson	339
Kluang	P Swettenham	353
Kluang	Seremban	372
Kluang	Singapore	186
Kluang	Taipung	177
Kota Bharu	Kota Bharu	82
Kota Bharu	Johor Bahru	82
Kota Bharu	Kangar	141
Kota Bharu	Kluang	141
Kota Bharu	Kuala Kangsar	434
Kota Bharu	Kuala Lumpur	409
Kota Bharu	Malaka	448
Kota Bharu	P Dickson	425
Kota Bharu	P Swettenham	426
Kota Bharu	Seremban	434
Kota Bharu	Singapore	405
Kota Bharu	Taipung	411
Kuala Kangsar	Kuala Kangsar	164
Kuala Kangsar	Johor Bahru	175
Kuala Kangsar	Kangar	145
Kuala Kangsar	Kluang	141
Kuala Kangsar	Kota Bharu	434
Kuala Kangsar	Kuala Lumpur	409
Kuala Kangsar	Malaka	448
Kuala Kangsar	P Dickson	425
Kuala Kangsar	P Swettenham	426
Kuala Kangsar	Seremban	434
Kuala Kangsar	Singapore	405
Kuala Kangsar	Taipung	411
Kuala Lumpur	Kuala Lumpur	166
Kuala Lumpur	Johor Bahru	409
Kuala Lumpur	Kangar	487
Kuala Lumpur	Kluang	487
Kuala Lumpur	Kota Bharu	448
Kuala Lumpur	Kuala Kangsar	409
Kuala Lumpur	Kuala Lumpur	166
Kuala Lumpur	Malaka	258
Kuala Lumpur	P Dickson	425
Kuala Lumpur	P Swettenham	426
Kuala Lumpur	Seremban	434
Kuala Lumpur	Singapore	405
Kuala Lumpur	Taipung	411
Malaka	Malaka	92
Malaka	Johor Bahru	487
Malaka	Kangar	448
Malaka	Kluang	487
Malaka	Kota Bharu	448
Malaka	Kuala Kangsar	448
Malaka	Kuala Lumpur	409
Malaka	Malaka	92
Malaka	P Dickson	425
Malaka	P Swettenham	426
Malaka	Seremban	434
Malaka	Singapore	405
Malaka	Taipung	411
P Dickson	P Dickson	54
P Dickson	Johor Bahru	175
P Dickson	Kangar	203
P Dickson	Kluang	203
P Dickson	Kota Bharu	712
P Dickson	Kuala Kangsar	425
P Dickson	Kuala Lumpur	409
P Dickson	Malaka	448
P Dickson	P Dickson	54
P Dickson	P Swettenham	425
P Dickson	Seremban	434
P Dickson	Singapore	405
P Dickson	Taipung	411
P Swettenham	P Swettenham	68
P Swettenham	Johor Bahru	175
P Swettenham	Kangar	203
P Swettenham	Kluang	203
P Swettenham	Kota Bharu	712
P Swettenham	Kuala Kangsar	425
P Swettenham	Kuala Lumpur	409
P Swettenham	Malaka	448
P Swettenham	P Dickson	425
P Swettenham	P Swettenham	68
P Swettenham	Seremban	434
P Swettenham	Singapore	405
P Swettenham	Taipung	411
Seremban	Seremban	191
Seremban	Johor Bahru	191
Seremban	Kangar	203
Seremban	Kluang	203
Seremban	Kota Bharu	434
Seremban	Kuala Kangsar	434
Seremban	Kuala Lumpur	405
Seremban	Malaka	434
Seremban	P Dickson	434
Seremban	P Swettenham	434
Seremban	Seremban	191
Seremban	Singapore	405
Seremban	Taipung	411
Singapore	Singapore	206
Singapore	Johor Bahru	175
Singapore	Kangar	175
Singapore	Kluang	175
Singapore	Kota Bharu	434
Singapore	Kuala Kangsar	405
Singapore	Kuala Lumpur	405
Singapore	Malaka	434
Singapore	P Dickson	434
Singapore	P Swettenham	434
Singapore	Seremban	434
Singapore	Singapore	206
Singapore	Taipung	433
Taipung	Taipung	230
Taipung	Johor Bahru	175
Taipung	Kangar	175
Taipung	Kluang	175
Taipung	Kota Bharu	434
Taipung	Kuala Kangsar	405
Taipung	Kuala Lumpur	405
Taipung	Malaka	434
Taipung	P Dickson	434
Taipung	P Swettenham	434
Taipung	Seremban	434
Taipung	Singapore	405
Taipung	Taipung	230

AREA AND POPULATION BY STATES (1970 CENSUS) (CONT'D)

8	Perak	8,110	1,569,139	786,677	782,462	193
9	Perlis	307	121,062	60,566	60,496	394
10	Selangor	3,166	1,630,366	836,375	793,991	515
11	Trengganu	5,002	405,368	201,044	204,324	81
	Total Peninsula Malaysia	50,806	8,809,557	4,434,645	4,374,912	173

* Wayfarers and persons afloat have not been allocated to individual states

POPULATION OF IMPORTANT TOWNS (1970 CENSUS)

Serial No	State	Over 100,000		50,000 - 100,000		Total			
		Males	Females	Males	Females				
1	Johor	69,627	66,602	136,229	2	56,325	58,184	114,509	
2	Kedah	0	0	0	1	33,774	32,486	66,260	
3	Kelantan	0	0	0	1	27,682	27,442	55,124	
4	Malaka	0	0	0	1	43,505	43,655	87,160	
5	Negeri Sembilan	0	0	0	1	40,739	40,182	80,921	
6	Pahang	1	134,551	134,696	269,247	1	31,441	29,746	61,187
7	Pinang	1	123,730	124,239	247,969	1	27,626	27,019	54,645
8	Perak	0	0	0	0	46,549	46,898	93,447	
9	Perlis	2	294,789	270,628	565,417	1	25,942	27,378	53,320
10	Selangor	0	622,697	596,165	1,218,862	10	333,583	332,990	666,573
11	Trengganu	5	0	0	0	0	0	0	
	Total								

POPULATION OF IMPORTANT TOWNS (CONT'D)

Serial No	State	20,000 - 50,000		Total
		Males	Females	
1	Johor	21,911	21,361	43,272
2	Kedah	18,276	17,683	35,959
3	Kelantan	0	0	0
4	Malaka	0	0	0
5	Negeri Sembilan	0	0	0
6	Pahang	34,412	31,629	66,041
7	Pinang	25,671	26,600	52,271
8	Perak	45,740	46,758	92,498
9	Perlis	0	0	0
10	Selangor	24,714	24,580	49,294
11	Trengganu	0	0	0
	Total	170,724	168,611	339,335

LABOUR FORCE POPULATION BY INDUSTRY, AGE 10 YEARS AND ABOVE (1980 CENSUS)

Industry	Persons		Total
	Males	Females	
1 Agriculture, forestry, hunting and fishing	611,346	402,554	208,792
2 Agriculture products requiring substantial processing	747,823	450,874	296,949
3 Mining and quarrying	55,276	48,203	7,073
4 Manufacturing	251,939	178,881	73,058
5 Construction	59,862	55,624	4,238

LABOUR FORCE POPULATION BY INDUSTRY, AGE 10 YEARS AND ABOVE (1980 CENSUS) (CONT'D)

6	Electricity, gas, water and sanitary services	19,756	18,732	1,024
7	Commerce	274,604	224,993	49,611
8	Transport, storage and communications	97,969	93,852	4,117
9	Services	472,626	332,158	140,468
10	Activities not adequately described	101,317	20,416	80,901
11	Not working but looking for work/blanks	178,431	132,001	46,430
12	Total labour force	2,870,949	1,958,288	912,661
13	Not in the labour force	3,086,071	1,019,948	2,066,123
14	Not stated	96,739	44,423	52,316
15	Population under 10 years	2,726,969	1,390,409	1,336,560
16	Total Population	8,780,728	4,413,068	4,367,660

LABOUR FORCE POPULATION BY OCCUPATION, AGE 10 YEARS AND ABOVE (1970 CENSUS)

Occupation	Persons		Total
	Males	Females	
1 Professional, technical and related workers	129,436	84,874	44,562
2 Administrative and managerial workers	20,308	19,623	685
3 Clerical and related workers	133,341	99,682	33,659
4 Sales workers	236,876	194,232	42,444
5 Service workers	225,417	151,168	74,249
6 Agricultural, animal husbandry and forestry workers, fishermen and hunters	1,322,133	824,281	497,852
7 Production and related workers, transport equipment operators and labourers	542,764	448,356	94,408
8 Activities not adequately described	101,553	19,817	81,736
9 Not working but looking for work/blanks	159,321	116,255	43,066
10 Total labour force	2,870,949	1,958,288	912,661
11 Not in the labour force	3,086,071	1,019,948	2,066,123
12 Not stated	96,739	44,423	52,316
13 Population under 10 years	2,726,969	1,390,409	1,336,560
14 Total population	8,780,728	4,413,068	4,367,660

BIRTH, DEATHS AND INFANT MORTALITY RATE

	1970		1971		1972		1973		1974		1975		1976		1977	
	Birth rate (a)	Death rate (a)	Birth rate (a)	Death rate (a)	Birth rate (a)	Death rate (a)	Birth rate (a)	Death rate (a)	Birth rate (a)	Death rate (a)	Birth rate (a)	Death rate (a)	Birth rate (a)	Death rate (a)	Birth rate (a)	Death rate (a)
Infant mortality rate	7.3	7.1	6.9	6.9	6.6	6.4	6.2	6.3	6.3	6.3	6.3	6.3	6.3	6.3	6.3	6.3
(b) Per 1,000 of estimated mid-year population	40.79	38.51	37.93	38.46	35.39	33.22	30.74	31.80	31.80	31.80	31.80	31.80	31.80	31.80	31.80	31.80
(b) Per 1,000 live births																

LITERACY IN PENINSULAR MALAYSIA (1970 CENSUS)

Total population (aged 10 and over)	Malay			Chinese			Indian			Others			Total
	Male	Female	Total	Male	Female	Total	Male	Female	Total	Male	Female	Total	
3,155,597	1,555,597	1,599,999	3,155,597	2,202,168	647,694	48,300	6,053,759						

LITERACY IN PENINSULAR MALAYSIA (1970 CENSUS) (CONT'D)

	1,959,303	1,278,785	411,572	32,443	3,682,103
Literate in any one or more languages					
Literate in Bahasa Malaysia	1,949,442	308,973	144,737	11,683	2,414,835
Literate in English	339,936	480,650	194,306	25,404	1,040,296

(a) Figures by age breakdown are not available

NUMBER OF EDUCATIONAL INSTITUTIONS

Type	1971	1972	1973	1974
1 Primary Schools	4,411	4,401	4,391	4,381
2 Secondary Schools	909	925	947	984
3 Secondary Technical Schools	3	4	6	8
4 Vocational Schools	70	57	85	65
5 Muslim College	1	1	1	1
6 Tunku Abdul Rahman College	1	1	1	1
7 Ungku Omar Polytechnic	1	1	1	1
8 Kuantan Polytechnic	—	—	—	—
9 Institute of Technology, Mara	1	1	1	1
10 Teachers' Training Institutions	11	12	13	14
11 Agricultural University (formerly College of Agriculture)	1	1	1	1
12 University of Technology (formerly National Institute of Technology)	1	1	1	1
13 Universities	3	3	3	3

	1975	1976	1977	1978
1 Primary Schools	4,365	4,375	4,328	4,341
2 Secondary Schools	943	859	724	739
3 Secondary Technical Schools	8	9	9	9
4 Vocational Schools	55	136	23	23
5 Muslim College	1	*	*	*
6 Tunku Abdul Rahman College	1	1	1	1
7 Ungku Omar Polytechnic	1	1	1	1
8 Kuantan Polytechnic	—	—	—	—
9 Institute of Technology, Mara	1	1	1	1
10 Teachers' Training Institutions	14	18	19	19
11 Agricultural University (formerly College of Agriculture)	1	1	1	1
12 University of Technology (formerly National Institute of Technology)	1	1	1	1
13 Universities	3	3	3	3

* Muslim College is to be considered as a secondary school and has therefore been included under item (2).

- 1 Kuantan Polytechnic was established in 1977.
- 2 All figures for Primary and Secondary Schools are for assisted schools only.

NUMBER OF STUDENTS BY STAGES OF INSTRUCTION

Stage/Subject	1971	1972	1973	1974
1 Primary Schools	1,464,889	1,500,152	1,538,611	1,534,611
2 Secondary Schools	546,081	593,344	634,805	705,825
3 Secondary Technical Schools	1,759	2,232	2,409	3,648
4 Vocational Schools	14,030	13,006	18,272	17,621
5 Muslim College	401	391	644	597
6 Tunku Abdul Rahman College	1,124	1,423	2,182	3,276
7 Ungku Omar Polytechnic	504	794	1,040	1,202
8 Kuantan Polytechnic	—	—	—	—
9 Institute of Technology, Mara	2,685	3,517	4,482	5,963
10 Teachers' Training Institutions	2,952	3,402	4,601	5,657
11 Agricultural University (formerly College of Agriculture)	793	1,091	1,599	2,214
12 University of Technology (formerly National Institute of Technology)	1,008	1,057	1,498	1,728
13 Universities	9,789	11,266	11,939	12,255

	1975	1976	1977	1978
1 Primary Schools	1,593,804	1,608,157	1,609,335	1,637,143
2 Secondary Schools	780,454	827,576	826,090	855,373
3 Secondary Technical Schools	3,848	4,774	5,147	5,459
4 Vocational Schools	17,286	31,024	8,891	10,088
5 Muslim College	449	*	*	*
6 Tunku Abdul Rahman College	4,036	4,902	5,990	6,240
7 Ungku Omar Polytechnic	1,145	1,220	1,297	1,487
8 Kuantan Polytechnic	—	—	198	254
9 Institute of Technology, Mara	6,900	7,691	6,513	7,584
10 Teachers' Training Institutions	6,182	8,686	11,548	11,944
11 Agricultural University (formerly College of Agriculture)	2,542	3,045	3,210	3,169
12 University of Technology (formerly National Institute of Technology)	2,195	2,617	2,907	3,276
13 Universities	12,812	14,086	14,864	15,852

INCIDENCE OF INCOME TAX ACCORDING TO GRADE OF TOTAL INCOME

Assessments raised up to 31st March, 1977 for the year of assessment 1976

Income Level (Ringgit)	No. of assesses	Income assessed (Ringgit)	Tax assessed (Ringgit)
1 — 6,000	180,960	627,268,184	16,158,537
6,001 — 8,000	77,386	541,960,279	15,406,135
8,001 — 10,000	51,784	460,246,156	16,497,566
10,001 — 15,000	50,824	612,203,365	33,008,046
15,001 — 20,000	17,922	307,952,564	25,562,315
20,001 — 30,000	14,930	362,135,513	44,336,651
30,001 — 50,000	8,700	327,497,759	61,463,550

GROSS NATIONAL PRODUCT AT CURRENT MARKET PRICES—MALAYSIA

	1973	1974	1975	1976	1977	1978*
1 Government Final Consumption Expenditure	2,919	3,516	3,924	4,301	5,388	6,100
2 Private Final Consumption Expenditure	10,450	12,776	13,086	14,594	16,655	18,850
3 Increase in Stocks	86	714	- 381	- 71	168	362
4 Gross Fixed Capital Formation	4,111	5,798	5,602	6,206	7,343	8,666
5 Exports of Goods and Services	7,767	11,043	10,172	14,554	16,216	17,611
6 Less Imports of Goods and Services	6,711	10,989	10,071	11,620	13,507	15,937
7 Gross Domestic Product in Purchaser's Values	18,622	22,858	22,332	27,964	32,263	35,652
8 Net Factor Payments to the Rest of the World	- 659	- 997	- 726	- 931	- 1,189	- 1,280
9 Gross National Product (GNP) at market Prices	17,963	21,861	21,606	27,033	31,074	34,372

* Estimates by JAPG (Inter-Agency Planning Group).

PRODUCTION OF SELECTED CONSUMER GOODS

	1974		1975		1976		1977		1978	
	Unit of Quality	'000 Kgm	'000 Litre	Tonnes	Tonnes	Tonnes	Tonnes	Tonnes	Tonnes	Tonnes
Made Tea*	3,237	3,066	3,206P							
Aerated water (a)	106,645	108,768	123,019							
and cordials (a)										
Biscuits (a)	36,674	30,345	35,454							
Cigarettes (a)	10,809	10,848	11,289							
Cigars and cheroots (a)	514	474	464							
Soap (a)	36,340	30,792	37,235							

* Tea manufactured from tea dry leaf.
(a) Not full coverage. Employment cut-off was used. Only established with 20 and above full time paid employees were covered.
P. Provisional

CONSUMER PRICE INDEX

	Base year: 1967=0				
	1973	1974	1975	1976	1977
1 Food	120.3	151.7	157.4	160.5	169.3
2 Beverages and tobacco	108.6	110.7	121.2	122.8	127.3
3 Clothing and footwear	127.9	144.1	143.3	146.9	152.6
4 Gross rent, fuel and power	104.3	111.5	118.9	125.6	133.2
5 Furniture, furnishings and household equipment	128.6	150.5	157.8	161.7	167.3

Information Malaysia

CONSUMER PRICE INDEX (CONT'D)

	1978	1977	1976	1975	1974	1973
6 Medical care and health expenses	146.0	140.9	135.2	122.4	116.4	107.8
7 Transport and communication	146.3	138.1	133.4	127.1	119.7	109.4
8 Recreation, entertainment, education and cultural services	135.5	132.7	130.3	129.5	126.9	119.8
9 Miscellaneous goods and services	170.2	159.4	151.3	147.9	140.4	122.5
10 Total	162.4	154.8	147.7	144.0	137.8	117.4

IMPORTS OF MERCHANDISE BY PRINCIPAL COMMODITIES

	1978	1977	1976	1975	1974	1973
Commodities	Ringgit	Ringgit	Ringgit	Ringgit	Ringgit	Ringgit
Rice	88,032,554	91,958,351	75,167,613	75,167,613	75,167,613	75,167,613
Wheat	121,884,789	143,371,675	156,779,196	143,371,675	143,371,675	143,371,675
Wheat flour	22,446	34,395	10,171	22,446	22,446	22,446
Sugar and honey	289,398,593	244,108,173	265,249,081	265,249,081	265,249,081	265,249,081
Alcoholic beverages	35,293,718	42,644,109	41,174,408	41,174,408	41,174,408	41,174,408
Tobacco	10,539,663	13,696,633	11,900,691	10,539,663	10,539,663	10,539,663
Crude manufactures	25,897,862	27,396,008	25,969,527	25,897,862	25,897,862	25,897,862
Fertilisers	92,335,278	138,629,977	120,688,683	92,335,278	92,335,278	92,335,278
Manufactured fertilisers	952,917,413	1,462,443,909	1,224,741,079	952,917,413	952,917,413	952,917,413
Petroleum and petroleum products	41,357,196	73,412,467	65,425,767	41,357,196	41,357,196	41,357,196
Cotton fabrics	140,154,361	158,498,648	152,501,289	140,154,361	140,154,361	140,154,361
Other fabrics (textiles)	30,206,286	19,824,059	21,298,103	30,206,286	30,206,286	30,206,286
Building materials	321,320,149	441,642,239	394,941,101	321,320,149	321,320,149	321,320,149
Iron and steel and alloys of steel	167,051,131	222,774,843	217,561,707	167,051,131	167,051,131	167,051,131
Manufactured metals	125,898,153	135,540,456	131,676,745	125,898,153	125,898,153	125,898,153
Power generating machinery	41,164,734	42,036,101	45,171,554	41,164,734	41,164,734	41,164,734
Agricultural machinery and appliances	43,810,263	35,055,189	37,311,462	43,810,263	43,810,263	43,810,263
Metal working machinery	89,453,490	63,456,461	79,256,153	89,453,490	89,453,490	89,453,490
Office machines except dictating machines						

Information Malaysia

IMPORTS OF MERCHANDISE BY PRINCIPAL COMMODITIES (CONT'D)

	1971	1972	1973	1974
Electrical machinery apparatus	597,398,769	656,555,671	734,868,098	1,333,061,104*
and appliances	573,793,945	645,582,091	845,364,007	761,636,914
Road motor vehicles	22,531,564	7,333,081	-8,419,770	13,891,462
Ships and boats	31,004,177	51,297,275	43,880,023	46,246,943
Clothing				

* This item refers to Group 77 under SITC Rev. II

MOTOR VEHICLES REGISTERED

Type of Vehicles	1971	1972	1973	1974
Private motor-cycles	389,133	435,334	507,096	611,822
Private motor-cars	253,491	279,300	316,894	357,910
Buses	6,447	6,839	7,274	7,733
Taxis	7,179	7,256	7,394	7,988
Hire and drive motor-cars	198	171	168	212
Lorries and vans	60,543	64,878	72,164	81,584
Road rollers, trailers, etc.	22,174	24,778	28,961	33,031
Total Number of Vehicles	739,765	818,657	939,951	1,100,280

MOTOR VEHICLES AND ROAD ACCIDENTS (CONT'D)

	1975	1976	1977	1978
Population	10,438,137	10,713,187	11,000,241	n.a.
Vehicles on road	1,267,119	1,429,845	1,621,271	1,829,958
Vehicles involved	75,653	93,437	94,962	101,289
Road mileage	12,043	12,340	12,637	—
Total accidents	48,233	54,319	55,917	56,756
Casualties				
Fatal	2,317	2,405	2,512	2,561
Serious	3,086	—	—	—
Slight	14,843	22,290	23,524	24,651
Total	20,246	24,695	26,036	27,212
Total damage (Ringgit)	10,472,224	5,381,320	13,687,622	—

n.a. - Not available

MOTOR VEHICLES AND ROAD ACCIDENTS

	1971	1972	1973	1974
Population	9,135,102	9,873,633	10,130,672	10,434,592
Vehicles on road	739,165	818,657	939,951	1,100,280
Vehicles involved	53,547	54,944	45,916	39,056
Road mileage	10,951	11,062	11,062	11,161
Total accidents	25,633	52,151	29,286	24,581
Casualties				
Fatal	1,548	1,712	1,922	2,303
Serious	2,226	1,674	2,504	2,124
Slight	12,118	8,373	12,176	10,285
Total	15,892	11,759	16,602	14,712
Total damage (Ringgit)	1,065,952	1,492,708	2,038,783	2,017,763

ARRIVAL OF VISITORS BY AIR AND SEA INTO PENINSULAR MALAYSIA
BY PURPOSE OF VISIT

Purpose of visit	1971(a)	1972(a)	1973(a)	1974(a)	1975(a)	1976(a)	1977	1978
1 Business	81,726	213,977	200,798	144,300	102,318	102,318	105,278	
2 Holiday/ Social	557,247	2,142,905	2,168,651	2,007,883	2,081,559	2,014,770	2,023,741	
3 Transit pass	34,372	44,483	46,440	53,849	61,728	70,768	69,960	
4 Education	7,006	16,592	17,709	16,165	15,488	13,998	12,617	
5 Official (b)	6,993	16,871	15,459	12,957	10,231	10,299	10,449	
6 Others (c)	77,888	460,829	609,564	420,334	331,300	412,552	442,526	
Total	765,232	2,895,657	3,058,621	2,655,488	2,602,624	2,617,514	2,664,571	

(a) The figures include the arrival of visitors by road and rail and additional entry points as from 16th August, 1971.

(b) A new category which came into existence after the implementation of the new ENTRY-EXIT control system on 16th August, 1971.

(c) This category prior to 16th August, 1971 includes special pass holders.

OCEAN GOING SHIPS ARRIVING AT AND DEPARTING FROM THE
PRINCIPAL PORTS PENINSULAR MALAYSIA

	Unit	1974	1975	1976	1977	1978
1 Pulau Pinang						
(a) Arrived	No.	1,729	1,753	1,916	1,985	1,923
Tonnage	'000	6,634	7,072	7,601	8,097	7,989
(b) Departed	No.	1,734	1,558	1,896	1,987	1,926
Tonnage	"	6,940	7,093	7,568	8,096	8,001
2 Port Klang						
(a) Arrived	No.	2,495	2,749	2,794	2,851	2,978
Tonnage	"	11,927	13,567	14,807	16,263	17,222
(b) Departed	No.	2,499	2,733	2,796	2,859	2,963
Tonnage	"	11,956	13,469	14,821	16,315	17,181
3 Melaka						
(a) Arrived	No.	182	279	159	189	101
Tonnage	'000	393	463	320	335	199
(b) Departed	No.	182	225	162	189	97
Tonnage	"	393	448	320	340	192
4 Port Dickson						
(a) Arrived	No.	265	242	259	276	112
Tonnage	"	1,668	1,529	1,828	2,049	2,109
(b) Departed	No.	265	245	255	280	112
Tonnage	"	1,639	1,603	1,793	2,084	2,109
N R T	Net Registered Tons					

N R T Net Registered Tons

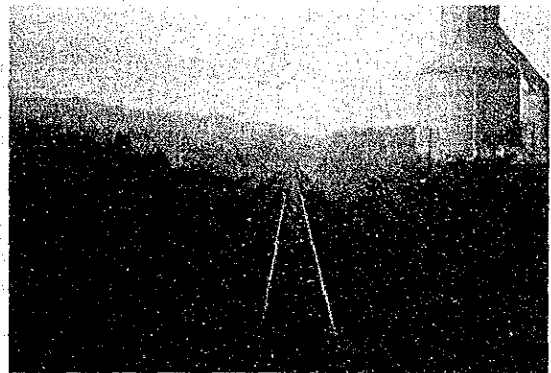
OCEAN GOING SHIPS ARRIVING AT AND DEPARTING FROM THE
PRINCIPAL PORTS OF PENINSULAR MALAYSIA (CONT'D)

	Unit	1974	1975	1976	1977	1978
5 Dungun						
(a) Arrived	'000	12	3	4	11	3
Tonnage	N R T	27	3	8	27	6
(b) Departed	No.	2	4	11	3	6
Tonnage	"	27	2	8	27	6
6 Lumut						
(a) Arrived	No.	26	8	15	15	20
Tonnage	"	94	55	88	102	118
(b) Departed	No.	25	8	15	14	21
Tonnage	"	86	55	88	100	119
7 Sungai Renggit/Pengerang						
(a) Arrived	'000	52	39	32	48	32
Tonnage	N R T	286	254	234	284	221
(b) Departed	No.	49	39	31	49	31
Tonnage	"	271	254	204	293	223
8 Johor Baru/Pasir Gudang						
(a) Arrived	No.	36	115	149	203	340
Tonnage	"	207	741	1,125	2,202	3,201
(b) Departed	No.	36	115	147	195	338
Tonnage	"	210	741	1,116	1,832	3,123
9 Kuanian						
(a) Arrived	No.	49	56	79	130	138
Tonnage	'000	137	181	263	367	542
(b) Departed	No.	49	56	79	130	134
Tonnage	'000	137	181	263	367	523
N R T	Net Registered Tons					

N R T Net Registered Tons



クアラルンプール駅及びクアラルンプール～パタワース間の急行列車



直線路速景



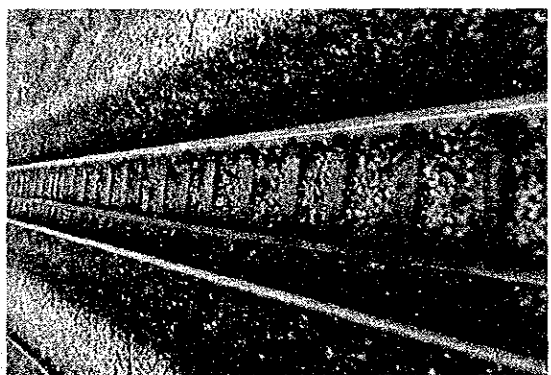
急行列車用ディーゼル機関車



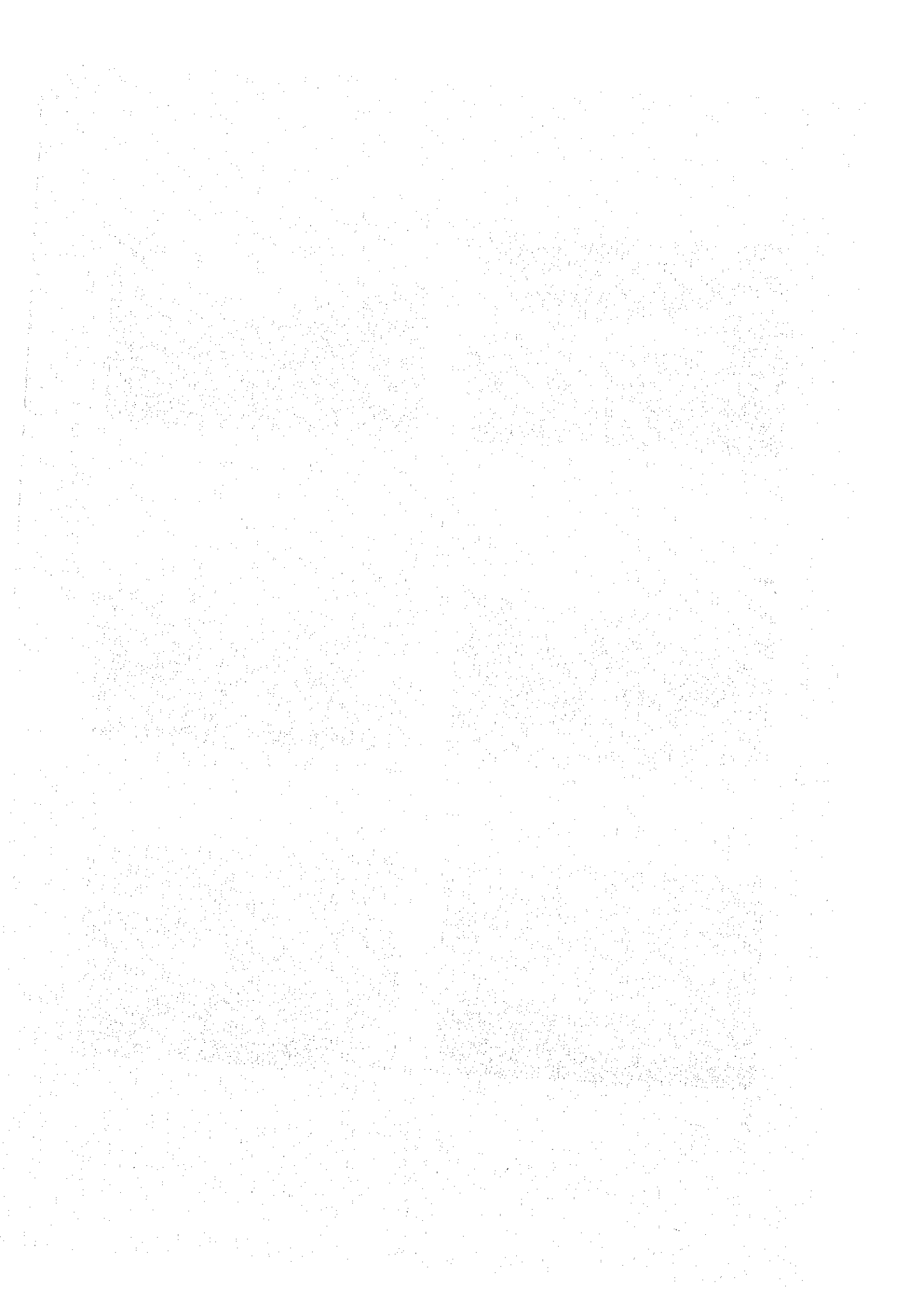
駅にて待避中の貨物列車



クアラルンプール～パタワース間の併行する国道
幹線道路
(2車線)



軌道の状況

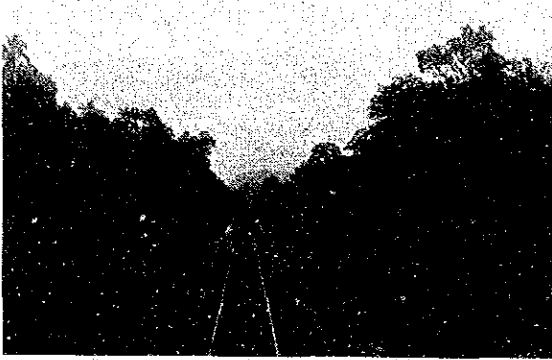




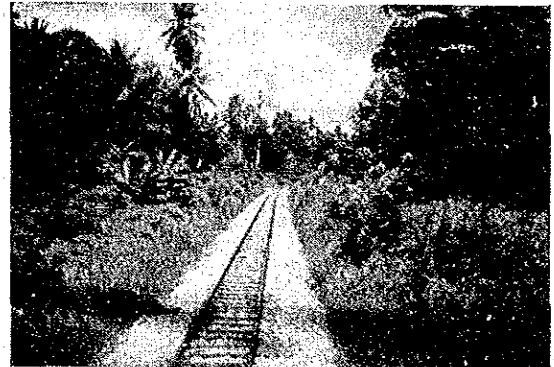
踏切



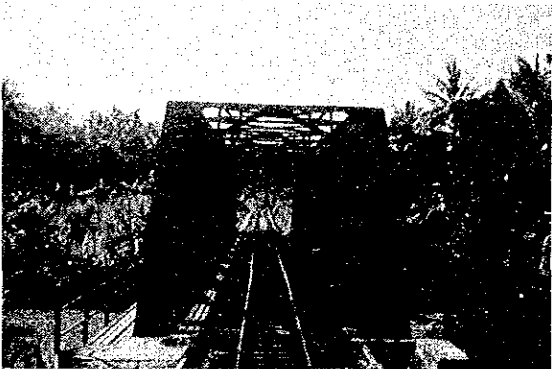
IPOH駅



下路トラス橋



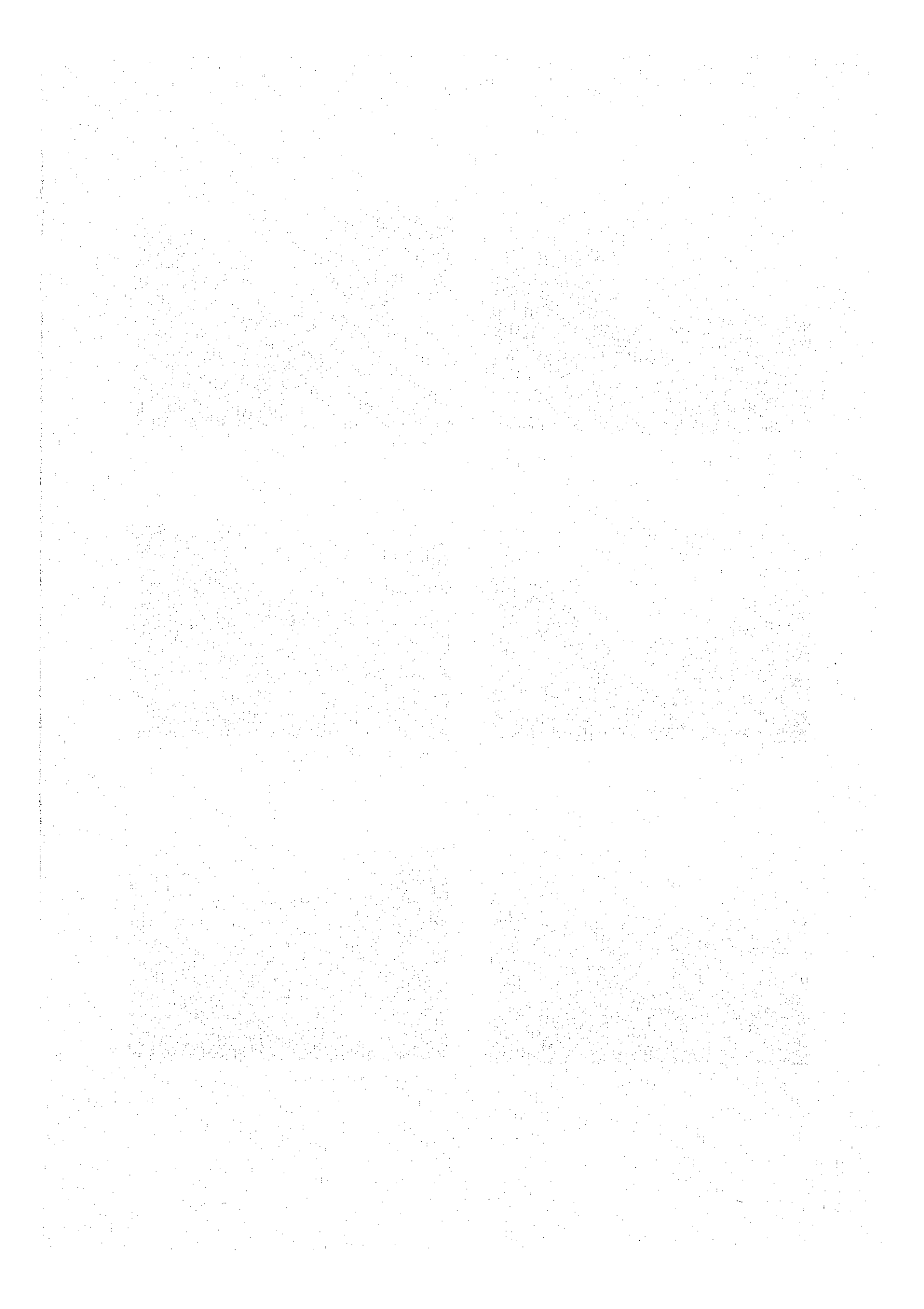
K. KANGSAR 駅～次駅間の線形

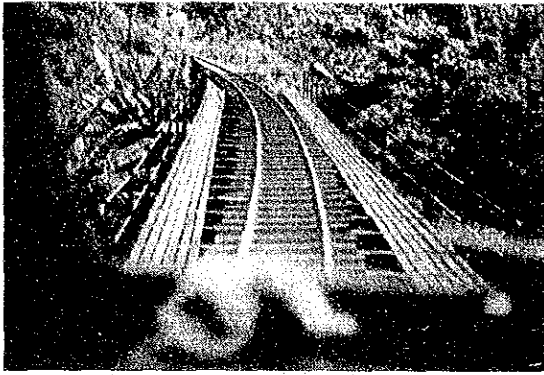


トラス橋

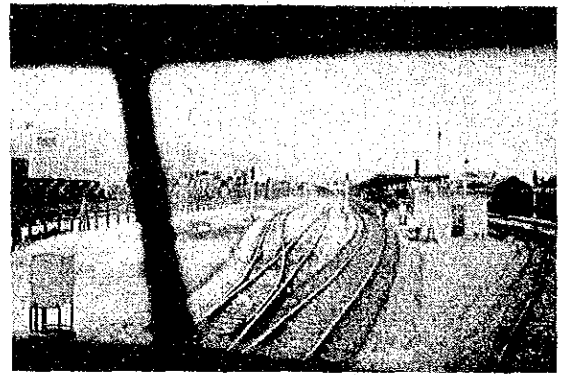


急勾配、急曲線部（難所区間）

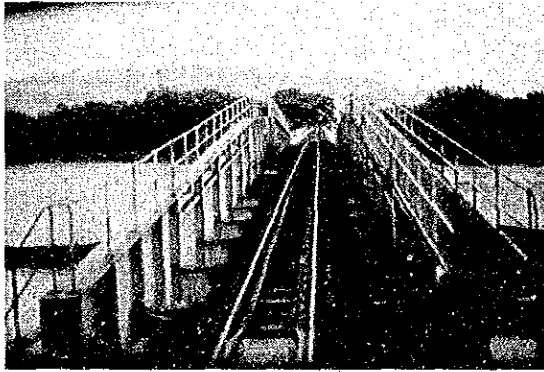




橋梁上の曲線（難所区間）



バターース駅構内



回転式橋梁（舟運のため）

収 集 資 料 リ ス ト

地 域 名	ア ジ ア マレーシア	調 査 団 等 名 称	マレーシア国鉄道整備計画 事前調査団	調 査 の 種 類	専 前 調 査	作 成 部 課	社 会 開 発 協 力 部 開 調 一 課					
番 号	資 料 の 名 称	形 態	版 型	ペ ー ジ 数	オ リ ジ ナ ル コ ピ ー の 別	部 数	取 集 先 名 称 又 は 発 行 機 関	寄 贈 (価 格) の 別	取 扱 区 分	利 用 者 所 属 氏 名	納 入 予 定 日	納 入 確 認 欄
1	YEAR BOOK OF TRANSPORT STATISTICS MALAYSIA 1980	本	A 4	132	コピ-	1部	PLANNING AND RESEARCH DIVISION, MINISTRY OF TRANSPORT, MALAYSIA	寄贈				
2	BASIC STATISTICS RELATING TO THE MALAYAN RAILWAY TO INDICATE TRENDS	冊子	-	12	コピ-	1部	MALAYAN RAILWAY	"				
3	MALAYAN RAILWAY ORIGIN AND DESTINATION (O-D) FREIGHT (TONNES) 1981	冊子	-	27	コピ-	1部	MALAYAN RAILWAY	"				
4	NUMBER OF TRAINS OPERATED	1枚紙	A 4	1	コピ-	1部	MALAYAN RAILWAY	"				
5	ROAD MAP OF MALAYSIA	地図	-	1	コピ-	1部	TOURIST DEVELOPMENT CORPORATION, MINISTRY OF TRADE & INDUSTRY, MALAYSIA	"				
6	TIME TABLE OF MALAYAN RAILWAY (KTM)	冊子	-	1	コピ-	1部	MALAYAN RAILWAY	"				
7	鐵路線形略図 (Butter Worth ~ Singapore間)	地図	-	1	コピ-	1部	MALAYAN RAILWAY	"				

Economic Planning Unit

1. Tan Sri Ishak bin Pateh Akhir Director General
2. Encik Ali Abul Hassan bin Sulaiman Director of Infrastructure Div.
3. Encik Kamaruzaman bin Shariff Director of Aid Div.
4. Encik Abdul Rahim b. Din
5. Encik Ismail b. Mohamad
6. Puan Wong Peg Har
7. Encik Kamarulzaman b. Abdul Ghani

Malayan Railway

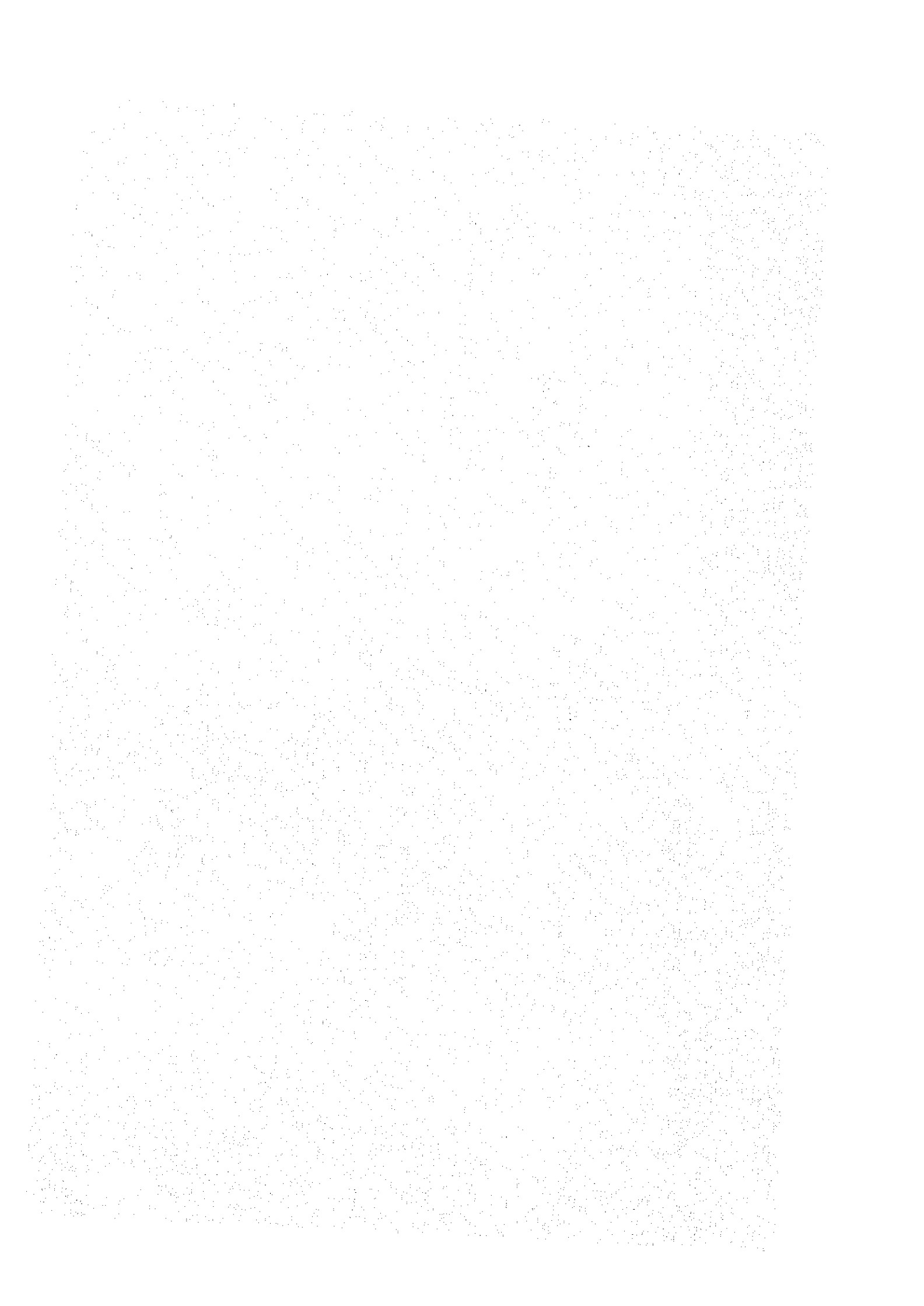
1. Encik Ahmad Badri bin Mohd Basir General Manager
2. Encik Abdul Rahim bin Jalal Deputy General Manager
3. Dr. Mohd Iwaz bin Abdul Karim Deputy General Manager (former
Deputy Director General of ICU)
4. Mr. Onn Peck Lim Director of Development Unit
5. Encik Masri bin Ahmad Director of General Planning

Ministry of Transport

1. Dato Ishak bin Tadin Secretary General
2. YB Datuk Syed Zainal Abidin
Jamalullail
3. Puan Siew Kuan Wai
4. Encik Cleopas Lim

Ministry of Foreign Affairs

1. Encik James Gan



JICA