

国際協力事業団

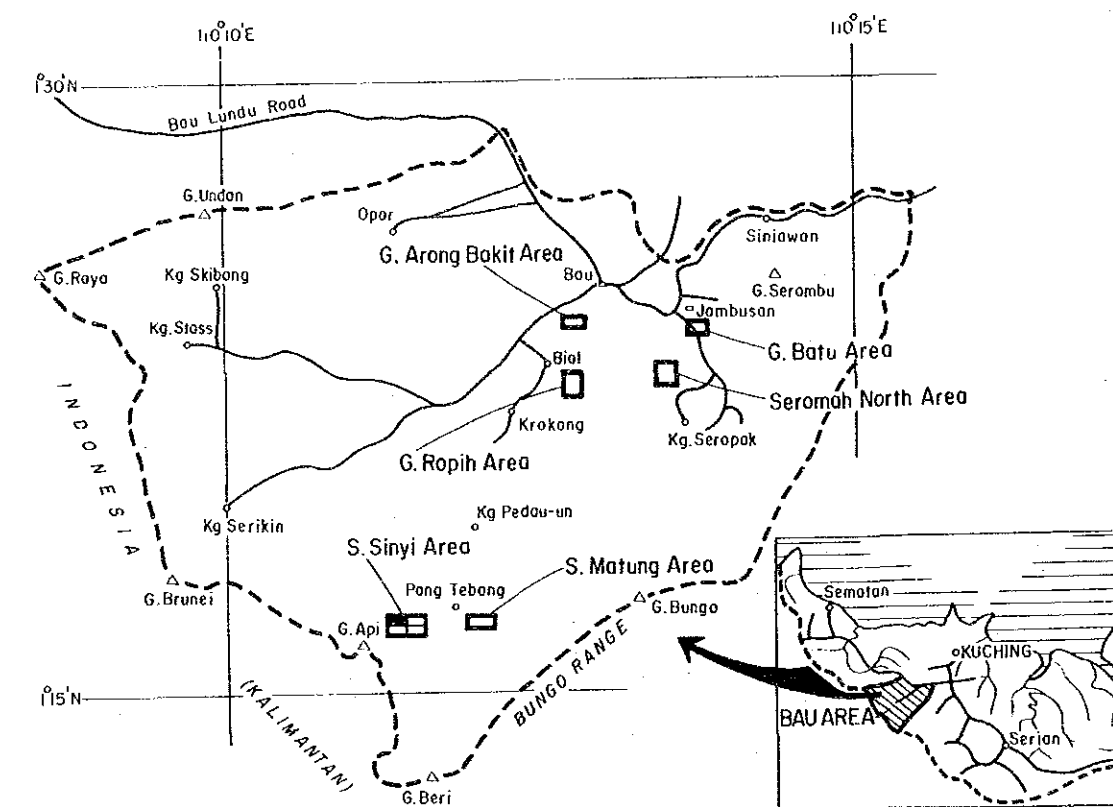
11856

圖書資料室蔵書

Map 4

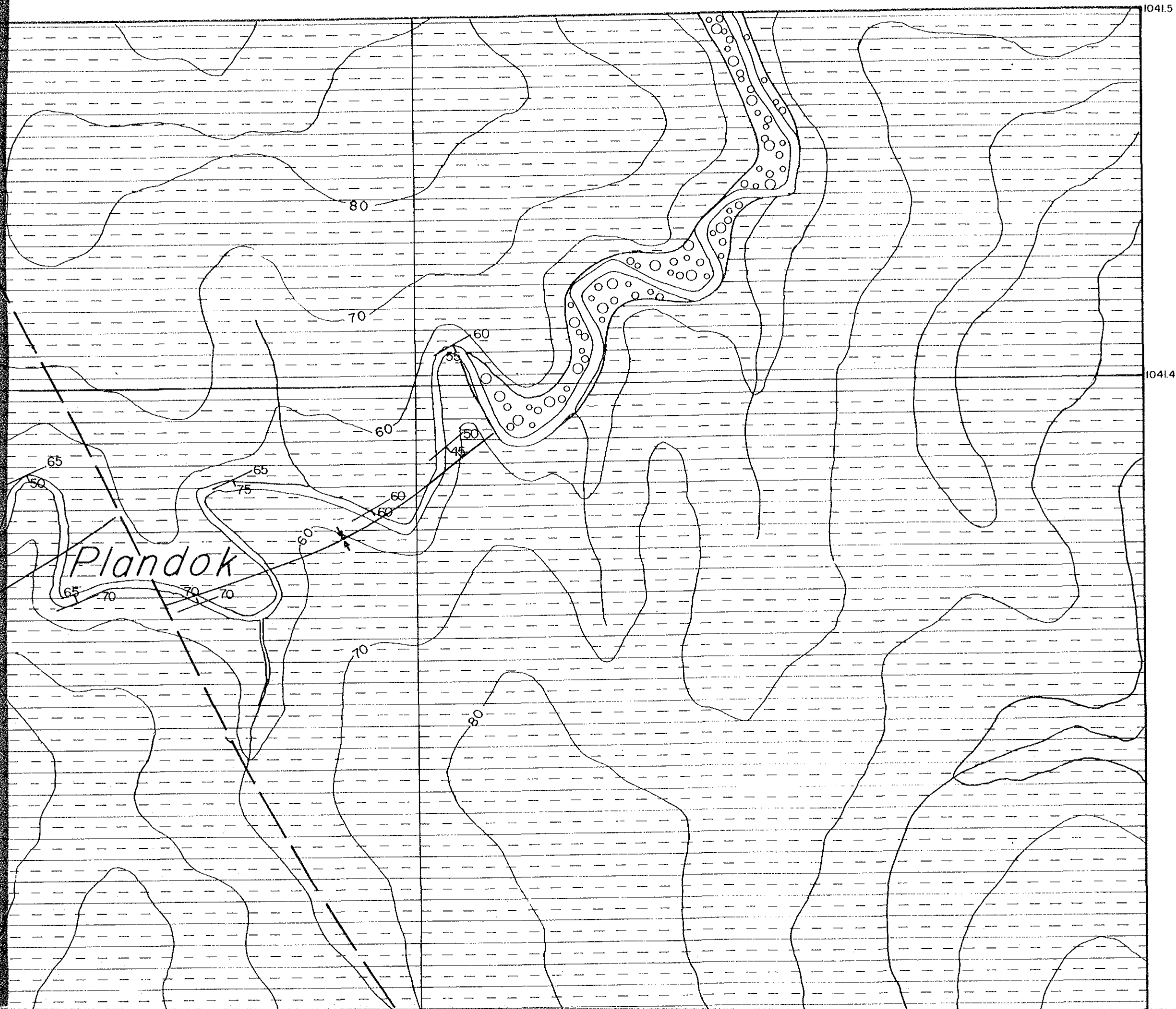
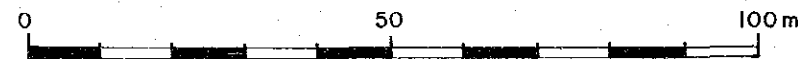
MINERAL EXPLORATION
BAU AREA
WEST SARAWAK, MALAYSIA
PHASE III

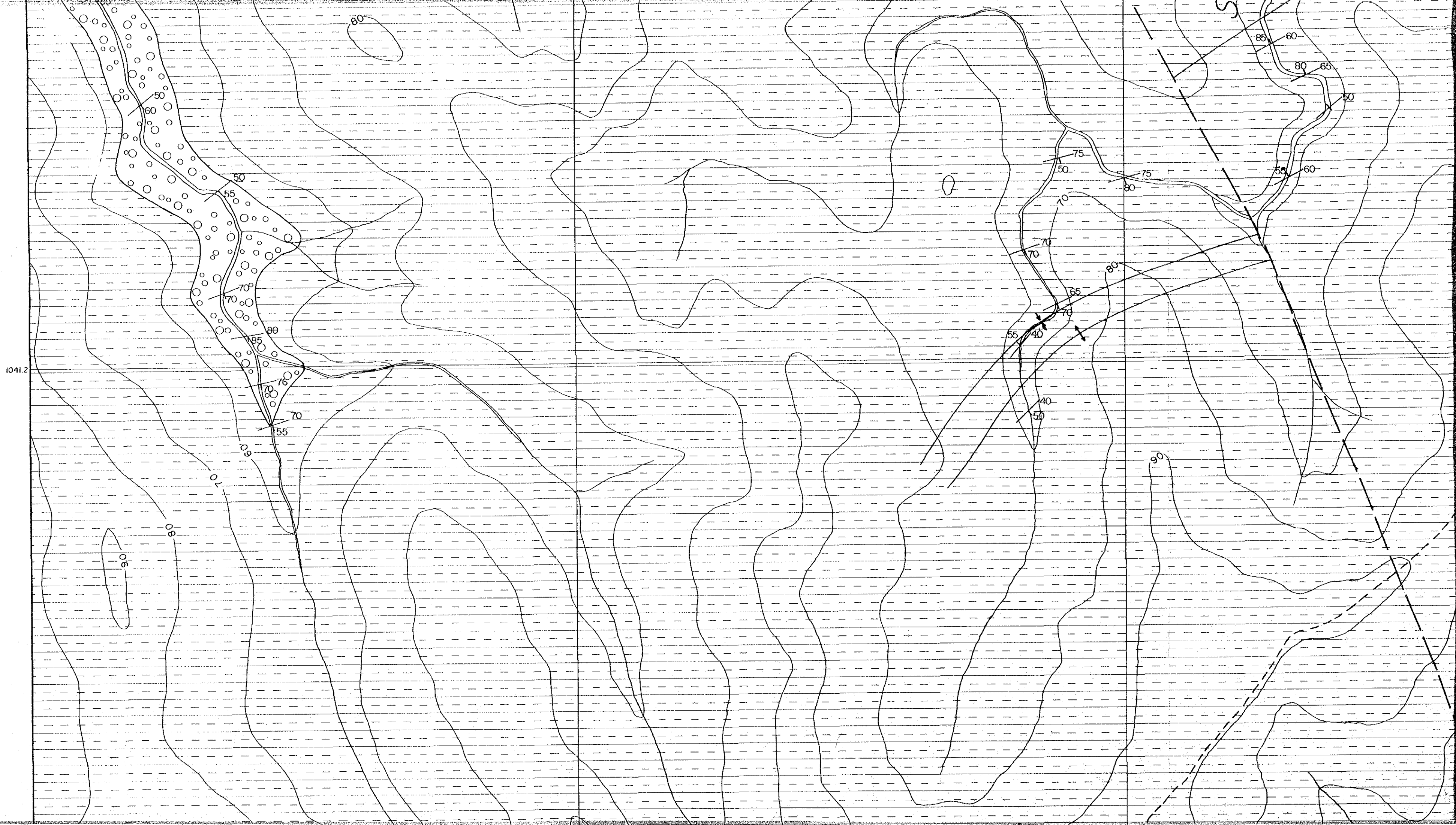
Geology of
Sungai Sinyi Area (1)

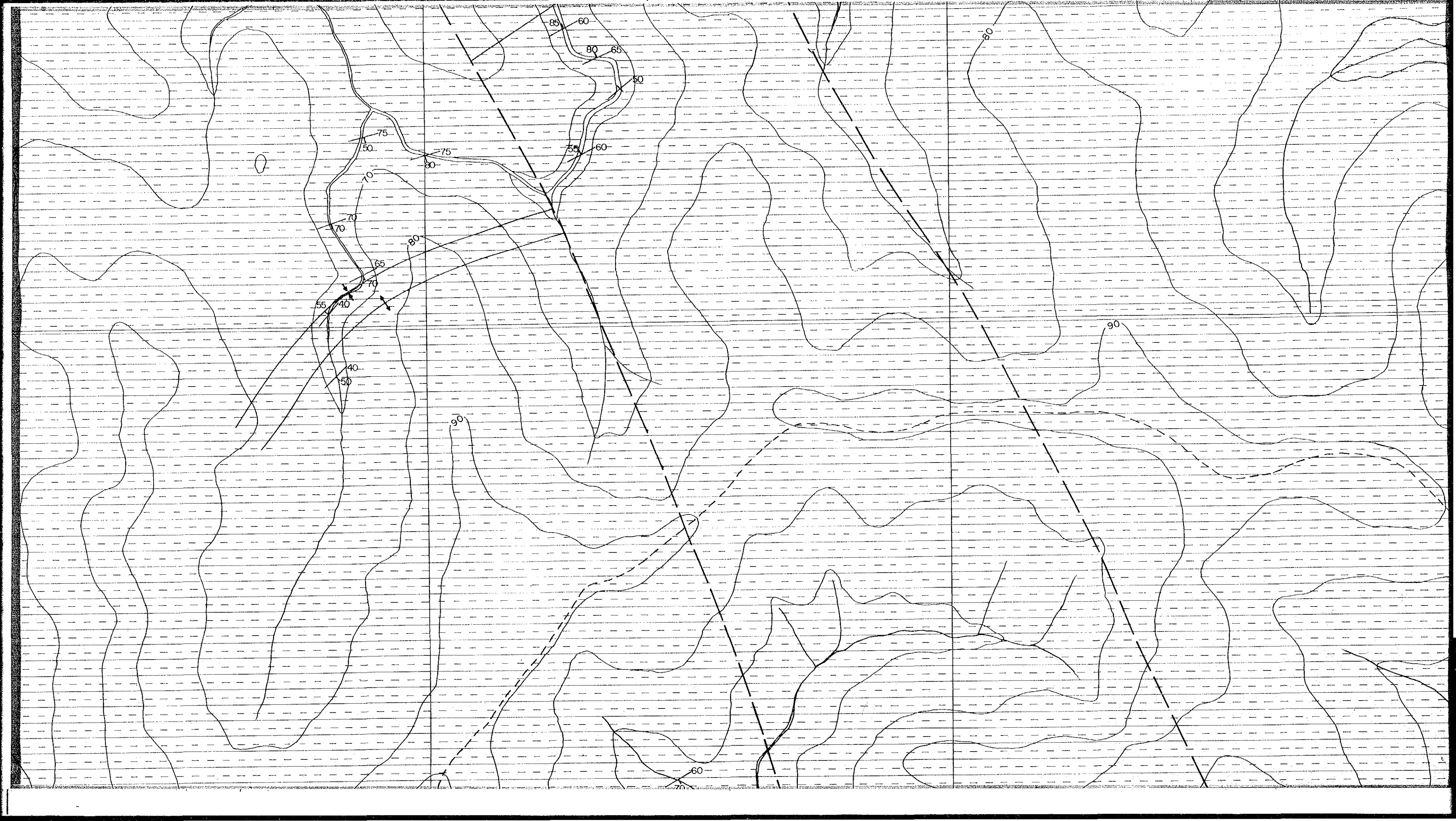


JAPAN INTERNATIONAL COOPERATION AGENCY
METAL MINING AGENCY OF JAPAN
GEOLOGICAL SURVEY OF MALAYSIA

Scale 1:1,000









0°15'N

(KUALA MANJAN)

BUNGO

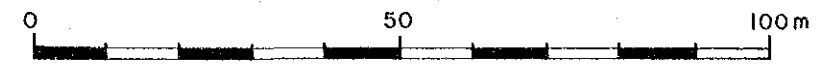
6. Beri

BAU AREA

Serian

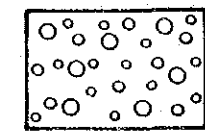
JAPAN INTERNATIONAL COOPERATION AGENCY
 METAL MINING AGENCY OF JAPAN
 GEOLOGICAL SURVEY OF MALAYSIA

Scale 1:1,000

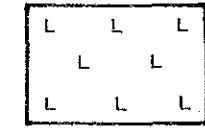


LEGEND


Quaternary

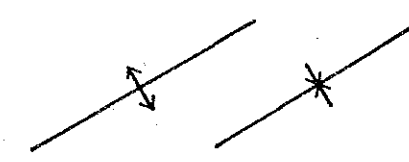
 Alluvium
gravel and sand

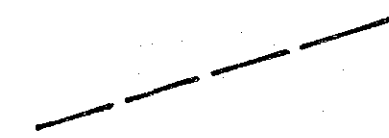
Neogene Tertiary

 Acidic Intrusive
dacite

Cretaceous Pedawan Formation

 bedded
fine-grained sandstone
siltstone and shale

 anticlinal and
synclinal axes

 fault

1041.2

90

80

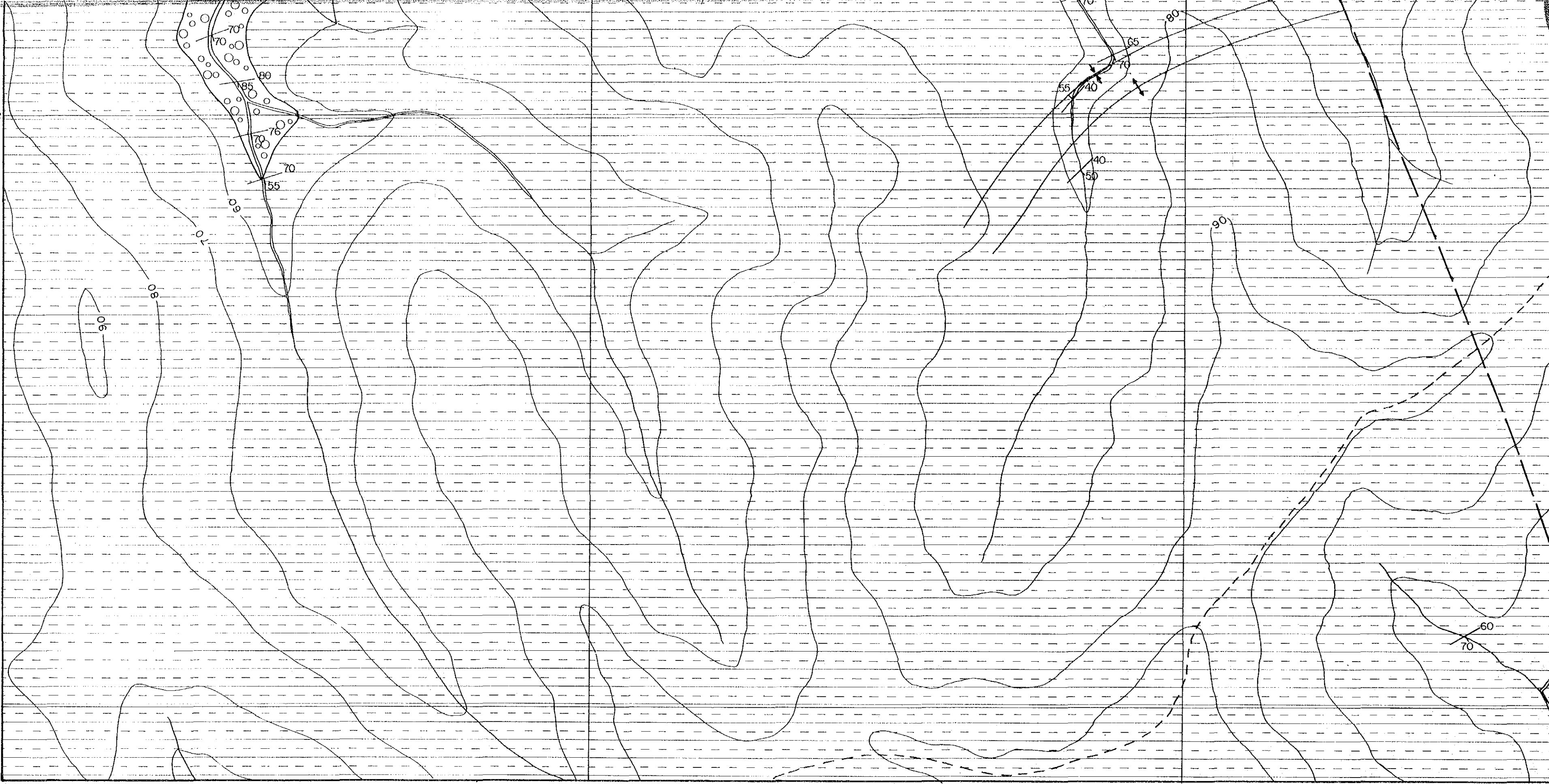
60

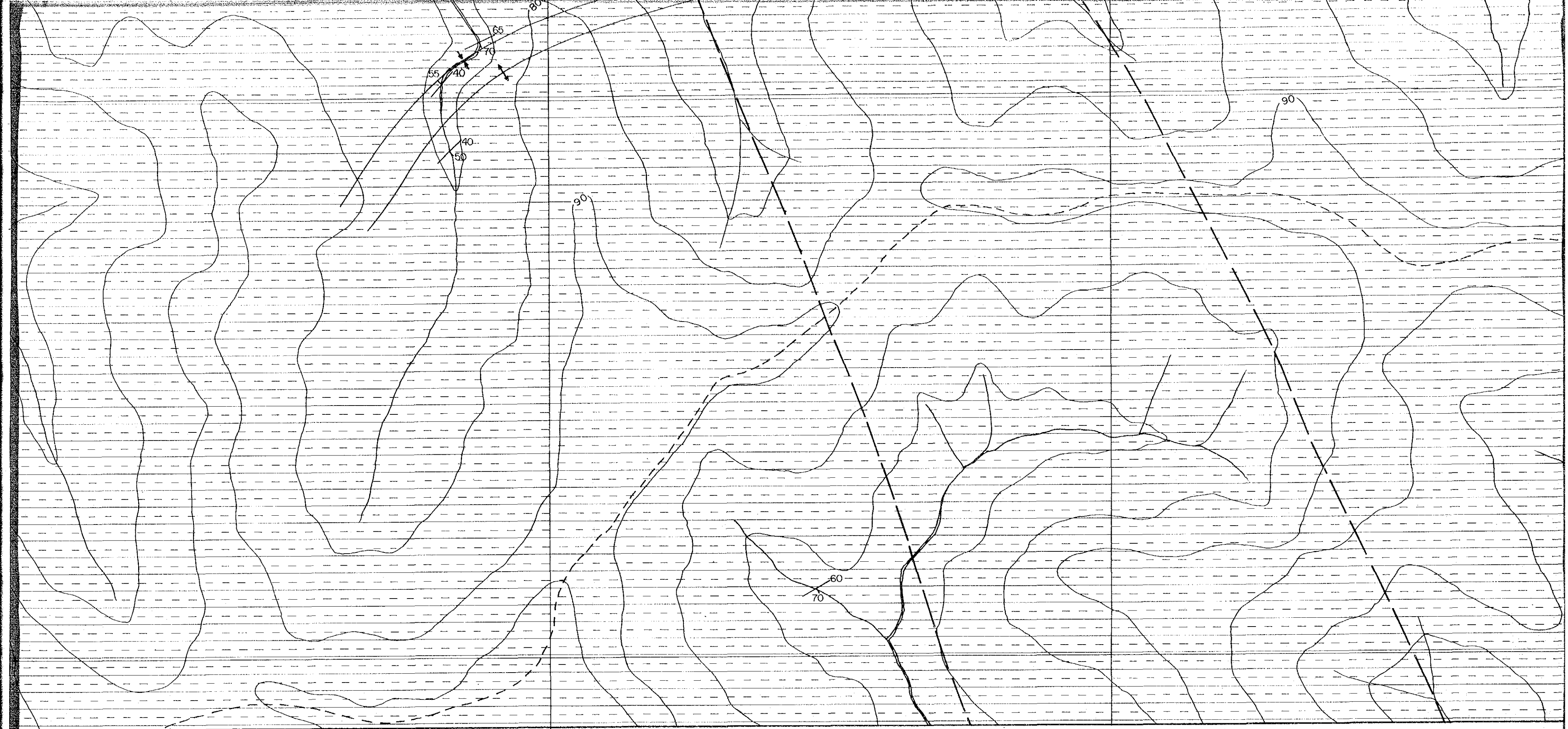
70

45

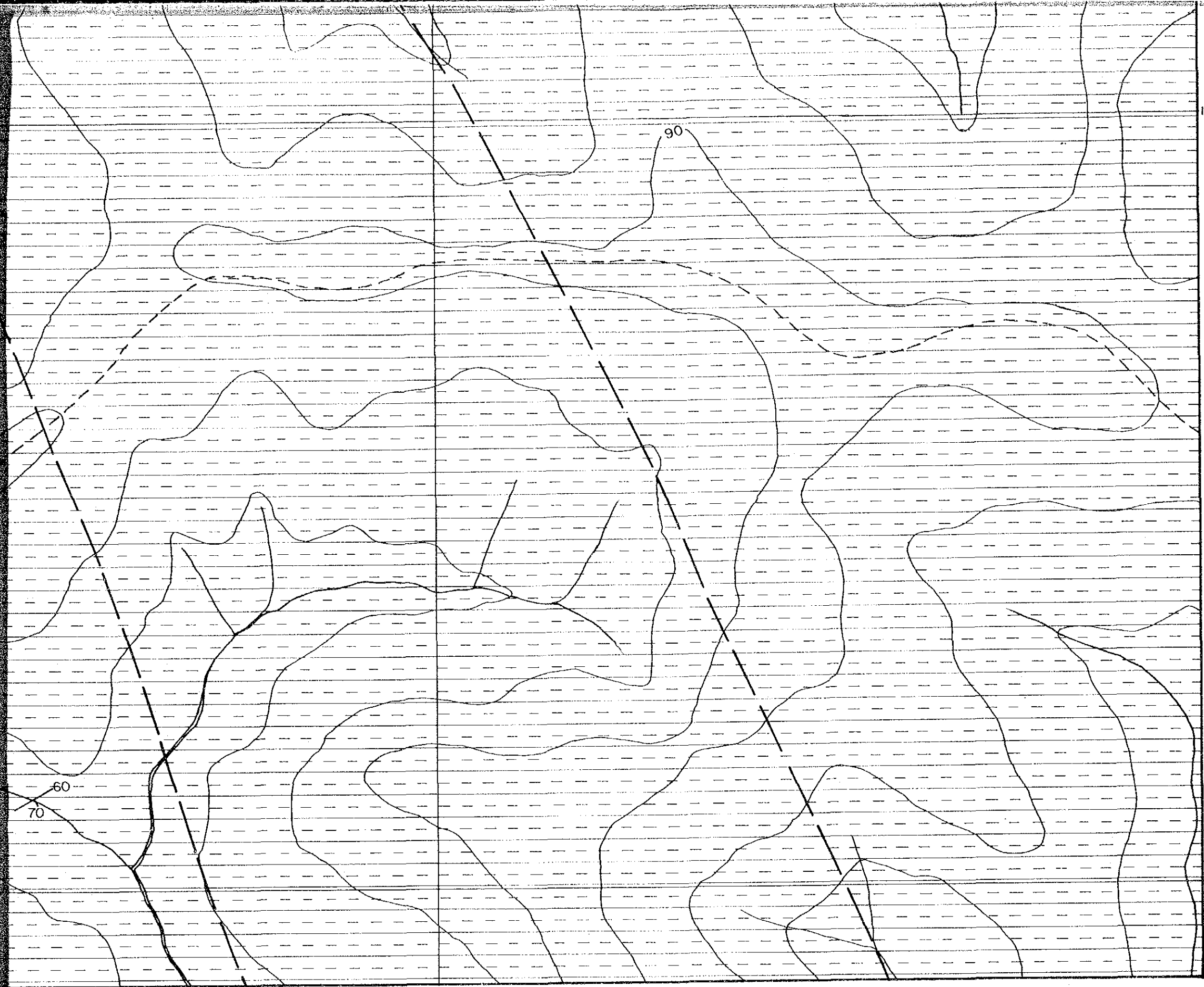
1041.2

1041.0

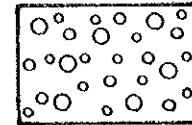


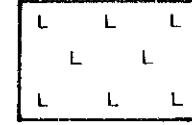


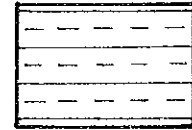
Blank white space at the bottom of the page.

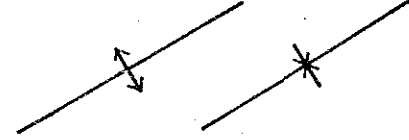


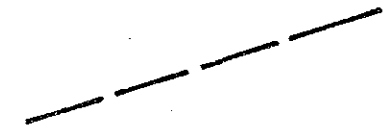
LEGEND

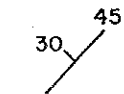
Quaternary
 Alluvium
 gravel and sand

Neogene Tertiary
 Acidic Intrusive
 dacite

Cretaceous Pedawan Formation
 bedded
 fine-grained sandstone
 siltstone and shale

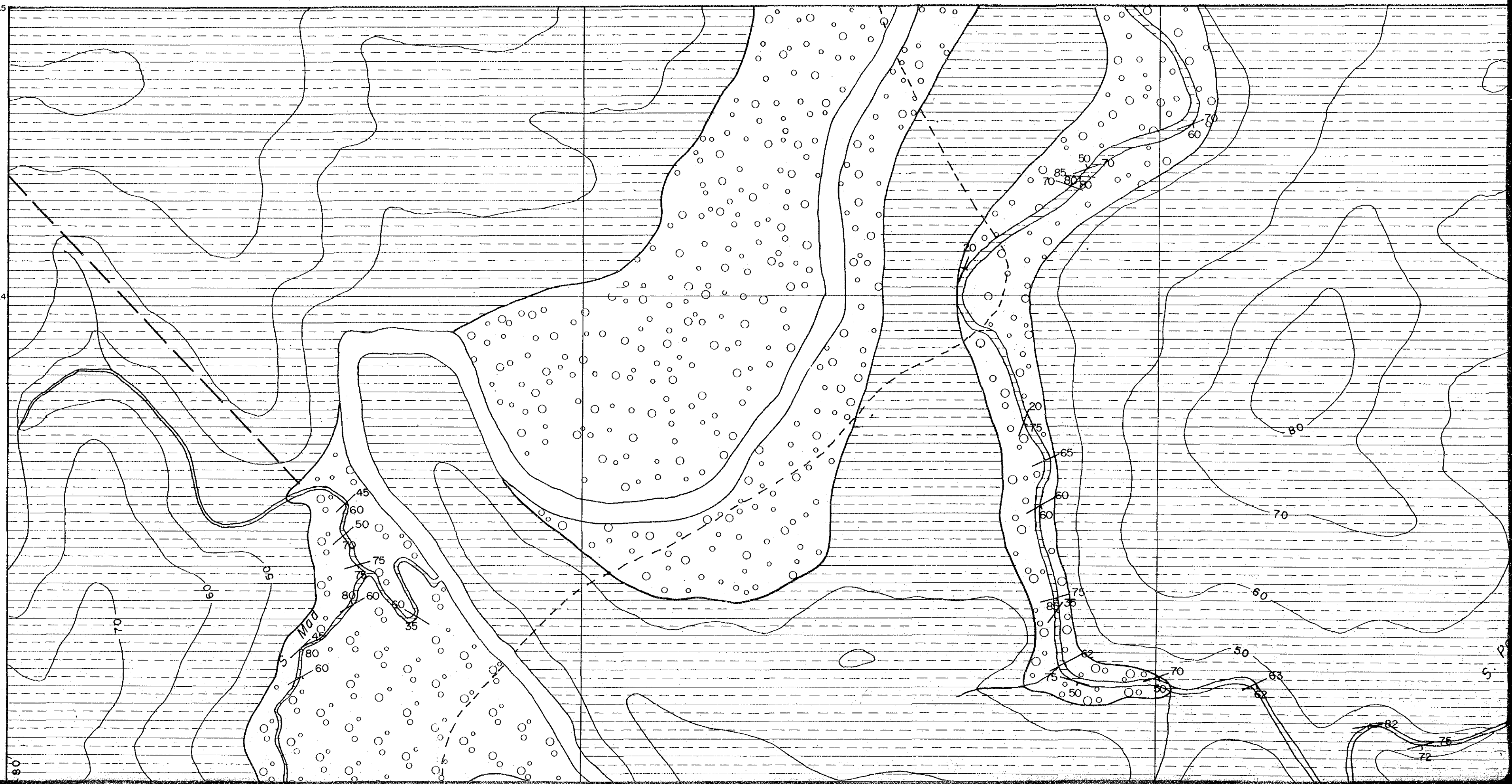
 anticlinal and
 synclinal axes

 fault

 bedding plane

1041.5

1041.4

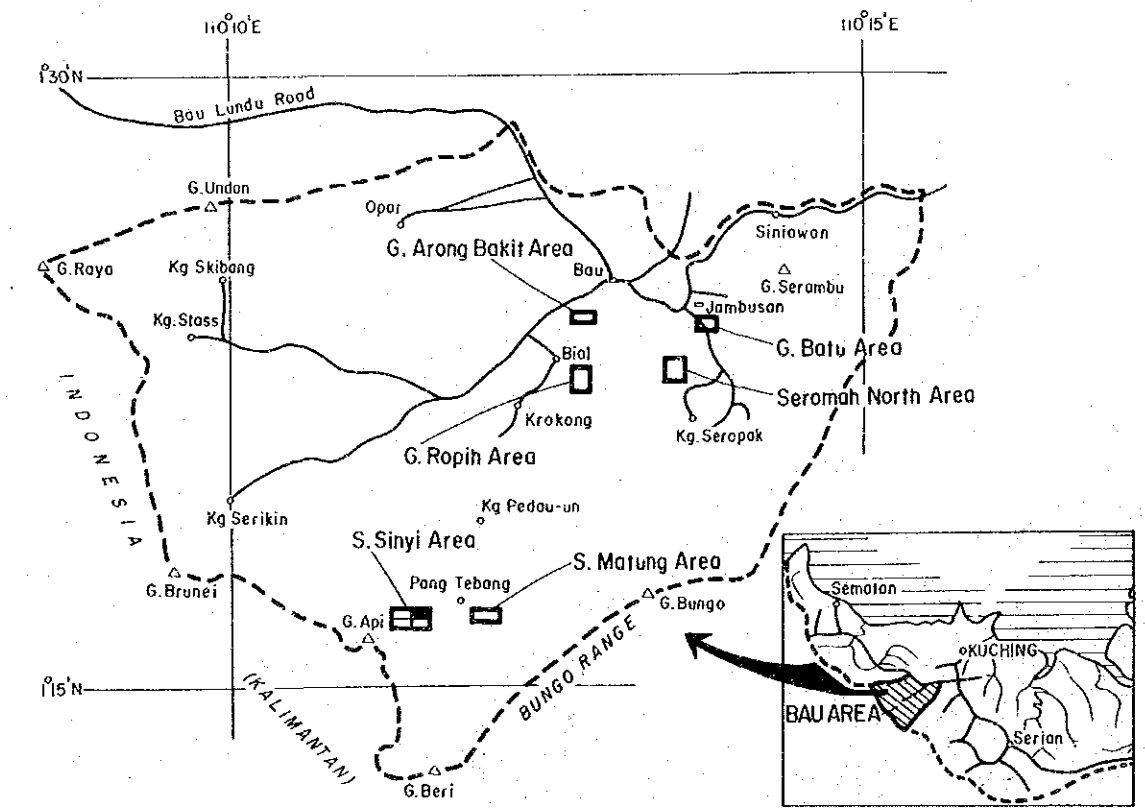




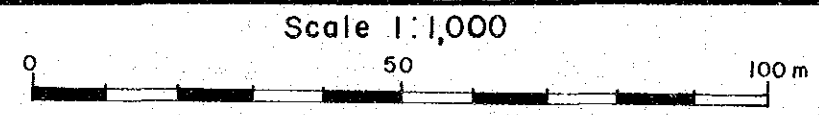
国際協力事業団
11856
図書資料室蔵書
Map 4-2



MINERAL EXPLORATION
BAU AREA
WEST SARAWAK, MALAYSIA
PHASE III
Geology of
Sungai Sinyi Area (2)

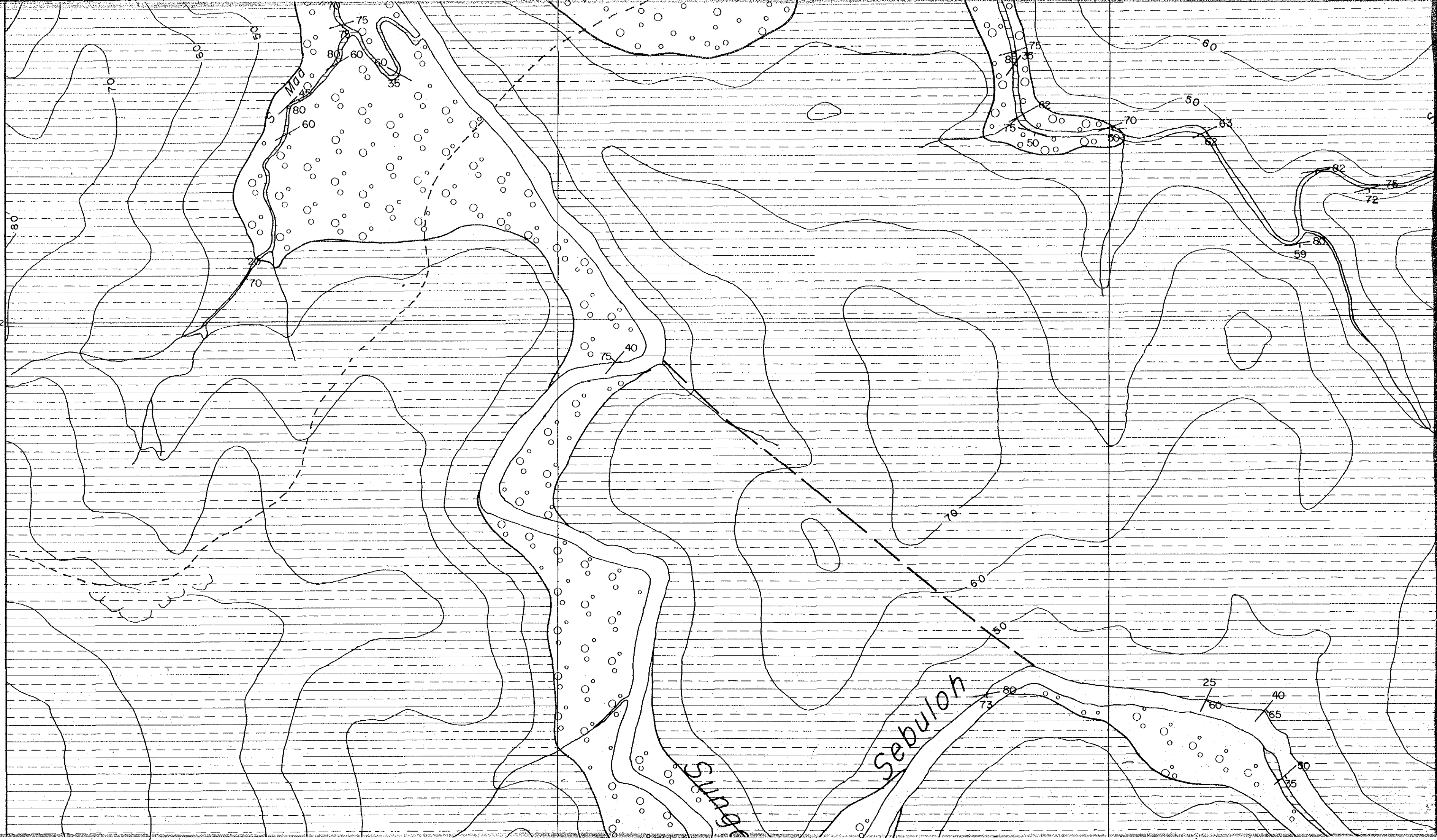


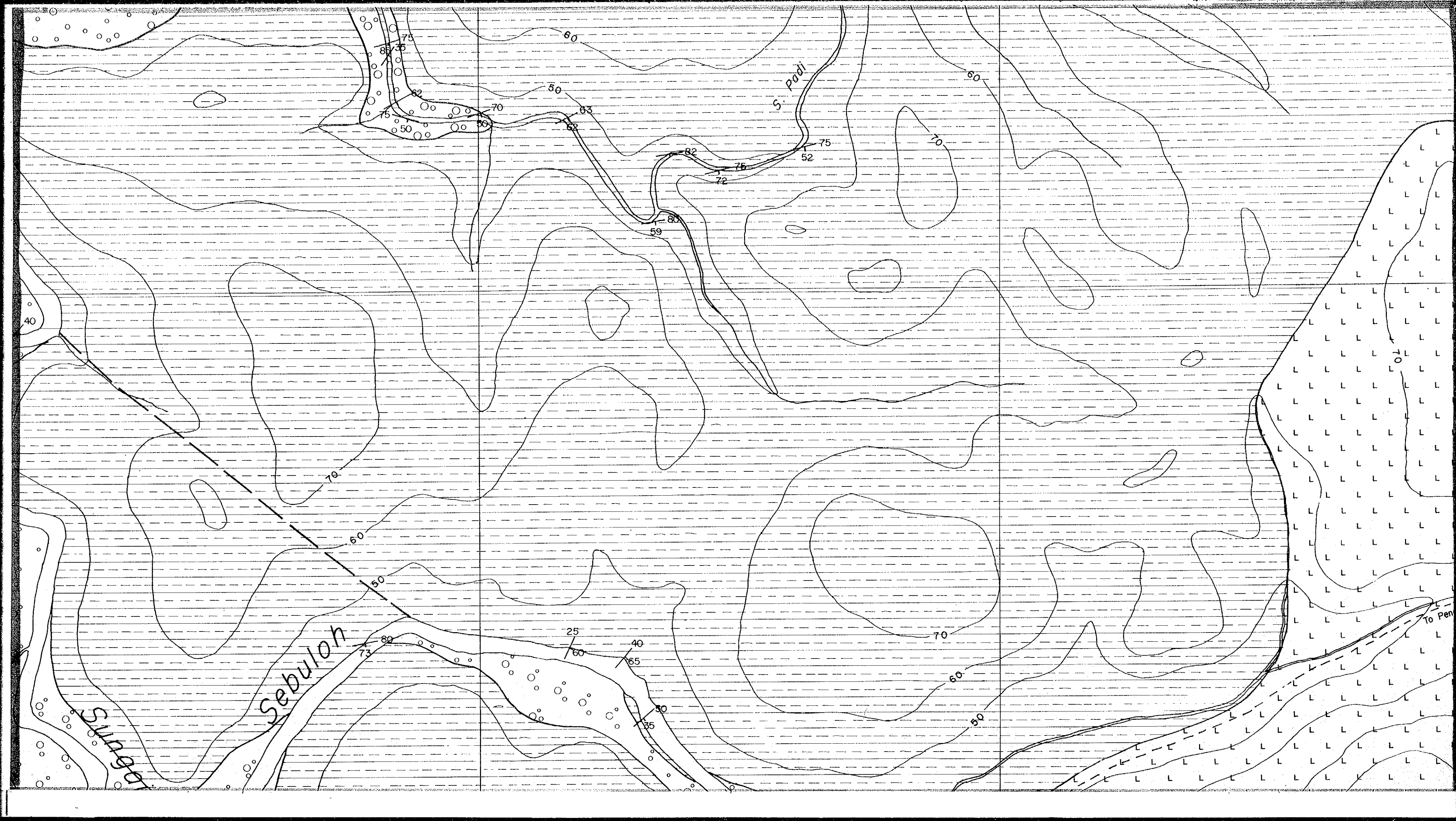
JAPAN INTERNATIONAL COOPERATION AGENCY
METAL MINING AGENCY OF JAPAN
GEOLOGICAL SURVEY OF MALAYSIA



2

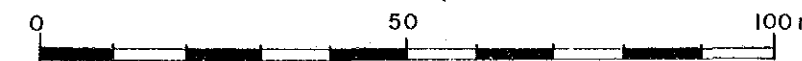
1041.2





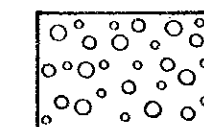
JAPAN INTERNATIONAL COOPERATION AGENCY
METAL MINING AGENCY OF JAPAN
GEOLOGICAL SURVEY OF MALAYSIA

Scale 1:1,000

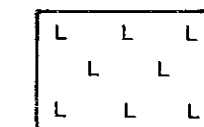


LEGEND

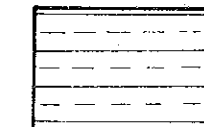
Quaternary

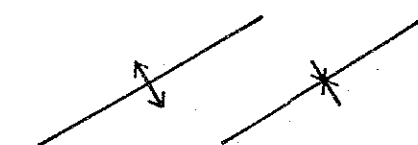
 Alluvium
gravel and sand

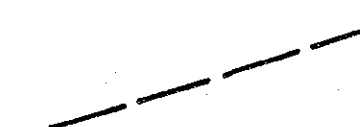
Neogene Tertiary

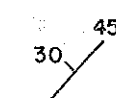
 Acidic Intrusive
dacite

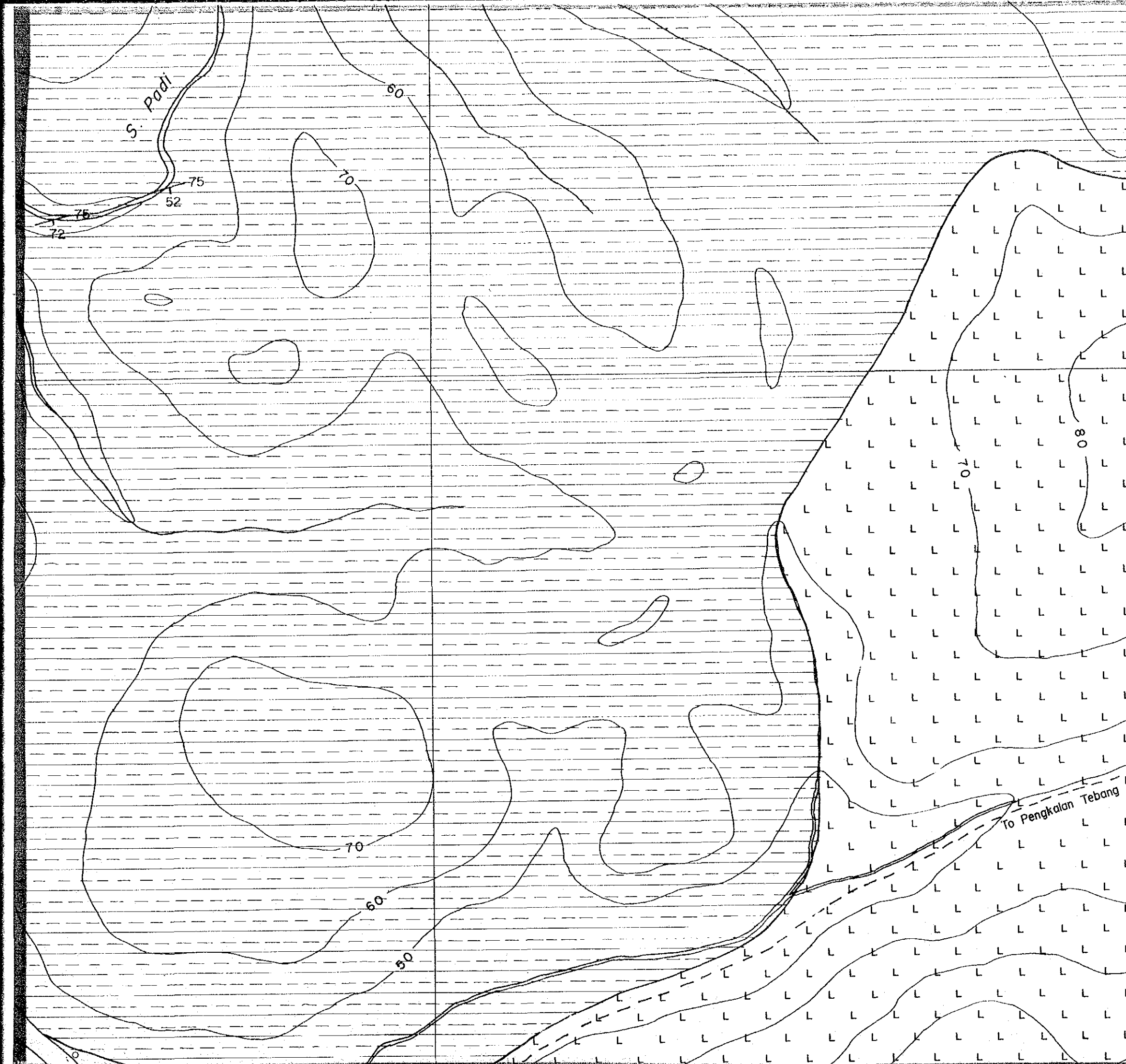
Cretaceous Pedawan Formation

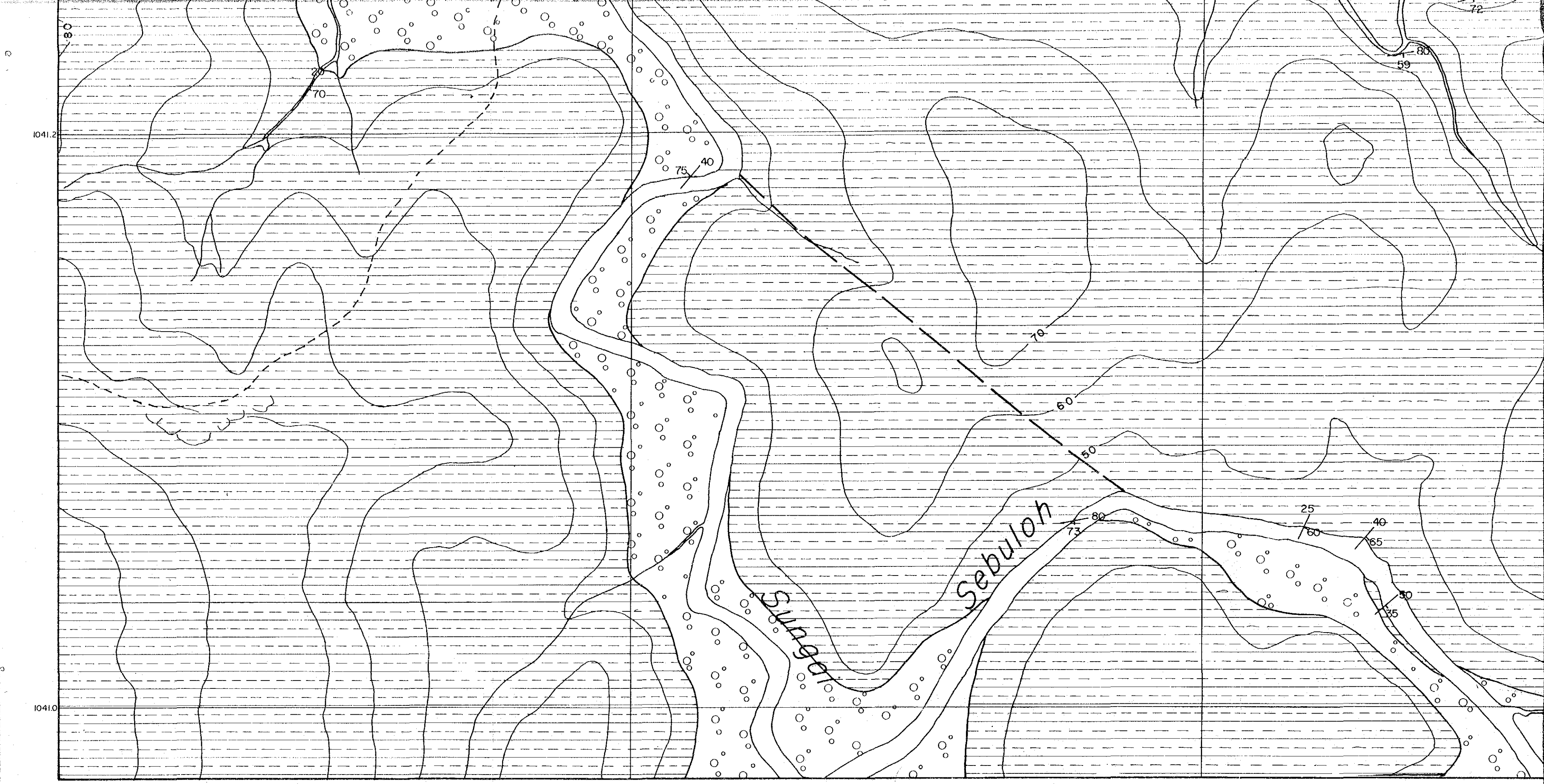
 bedded
fine-grained sandstone
siltstone and shale

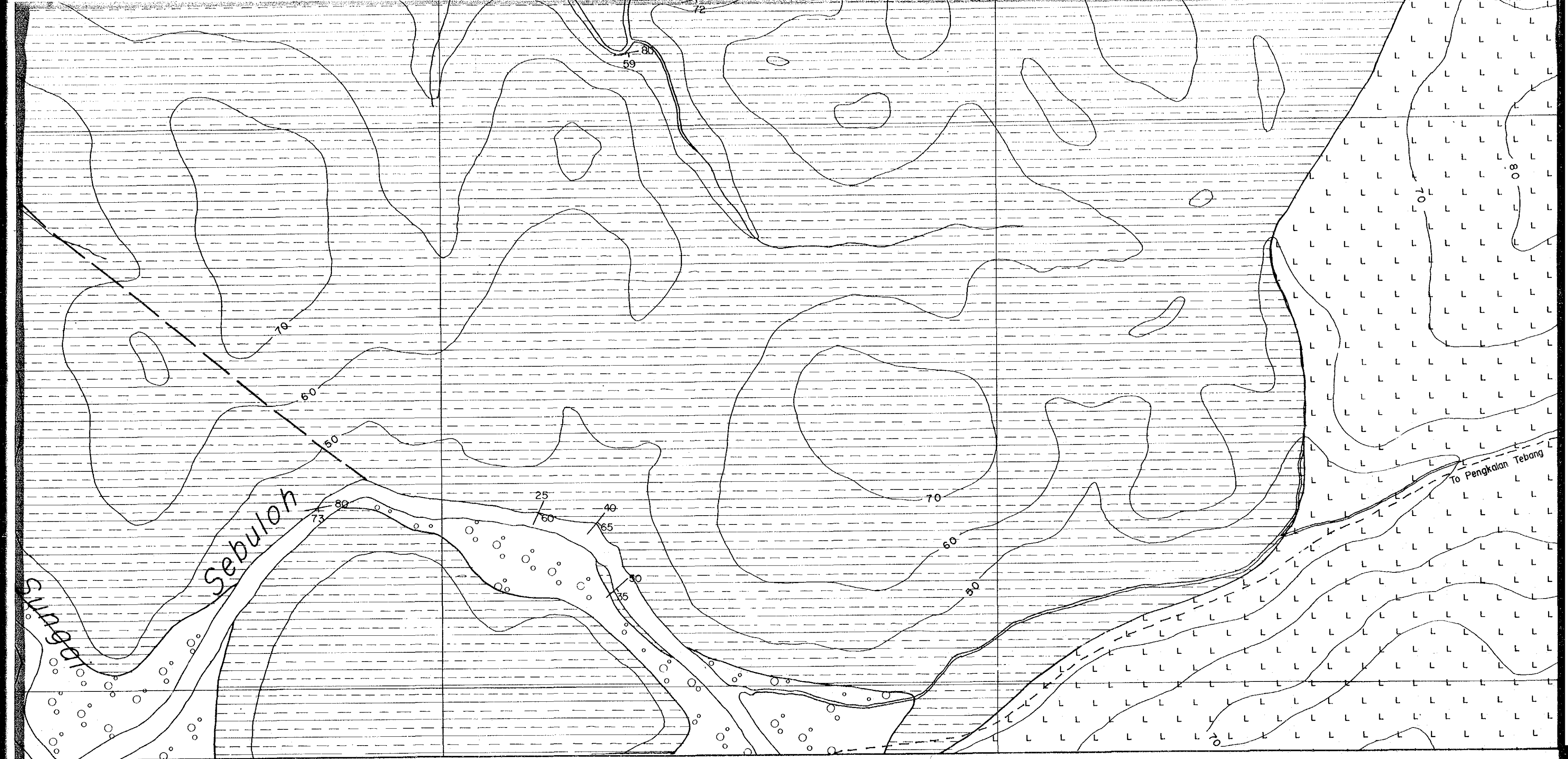
 anticlinal and
synclinal axes

 fault

 bedding plane

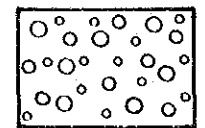


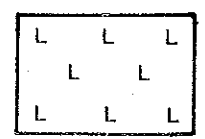


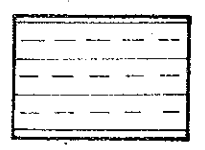





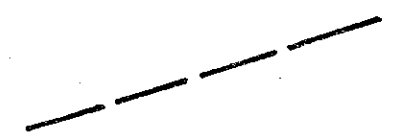
LEGEND

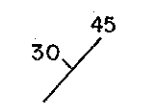
Quaternary
 Alluvium
 gravel and sand

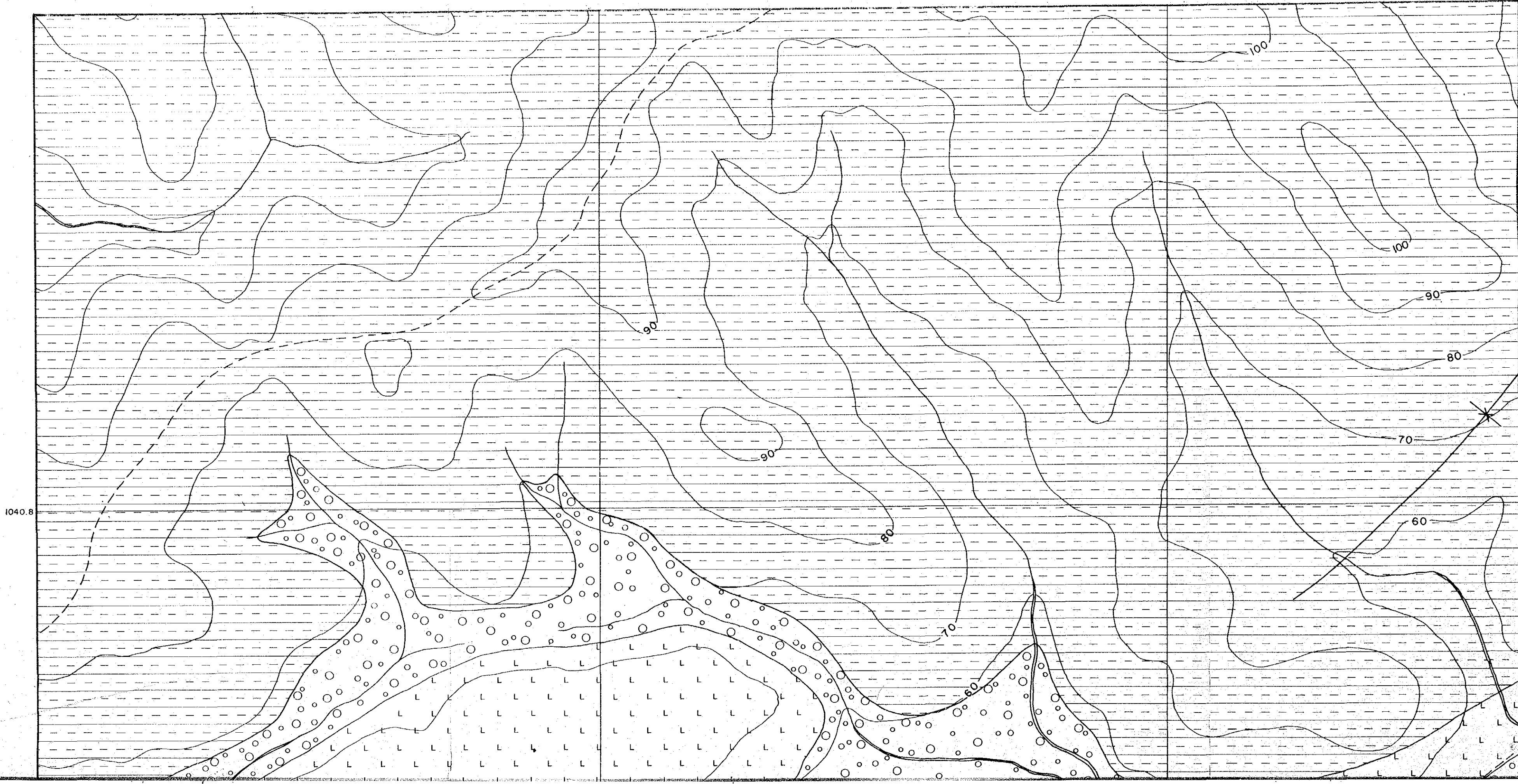
Neogene Tertiary
 Acidic Intrusive
 dacite

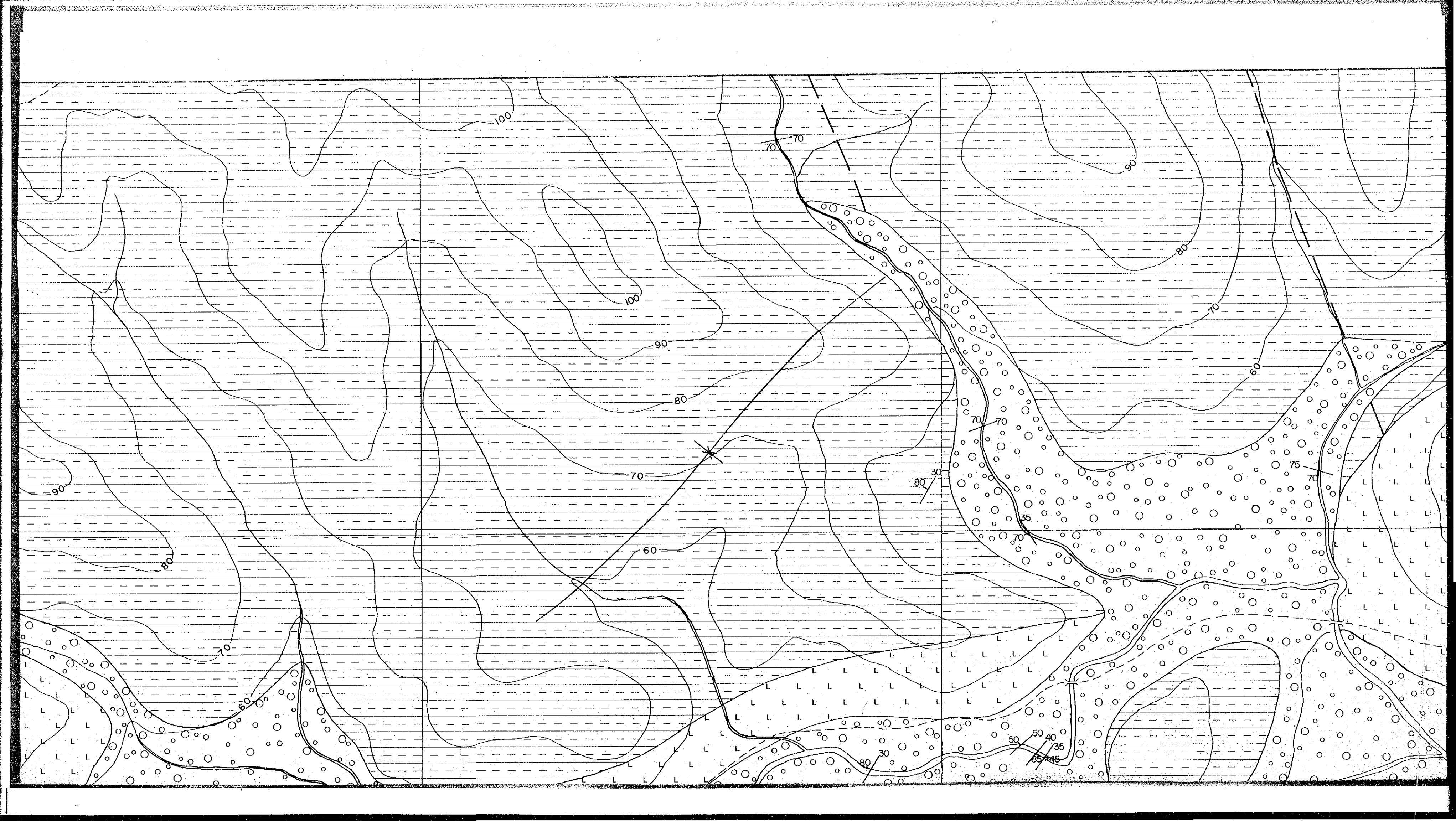
Cretaceous Pedawan Formation
 bedded
 fine-grained sandstone
 siltstone and shale

 anticlinal and
 synclinal axes

 fault

 bedding plane

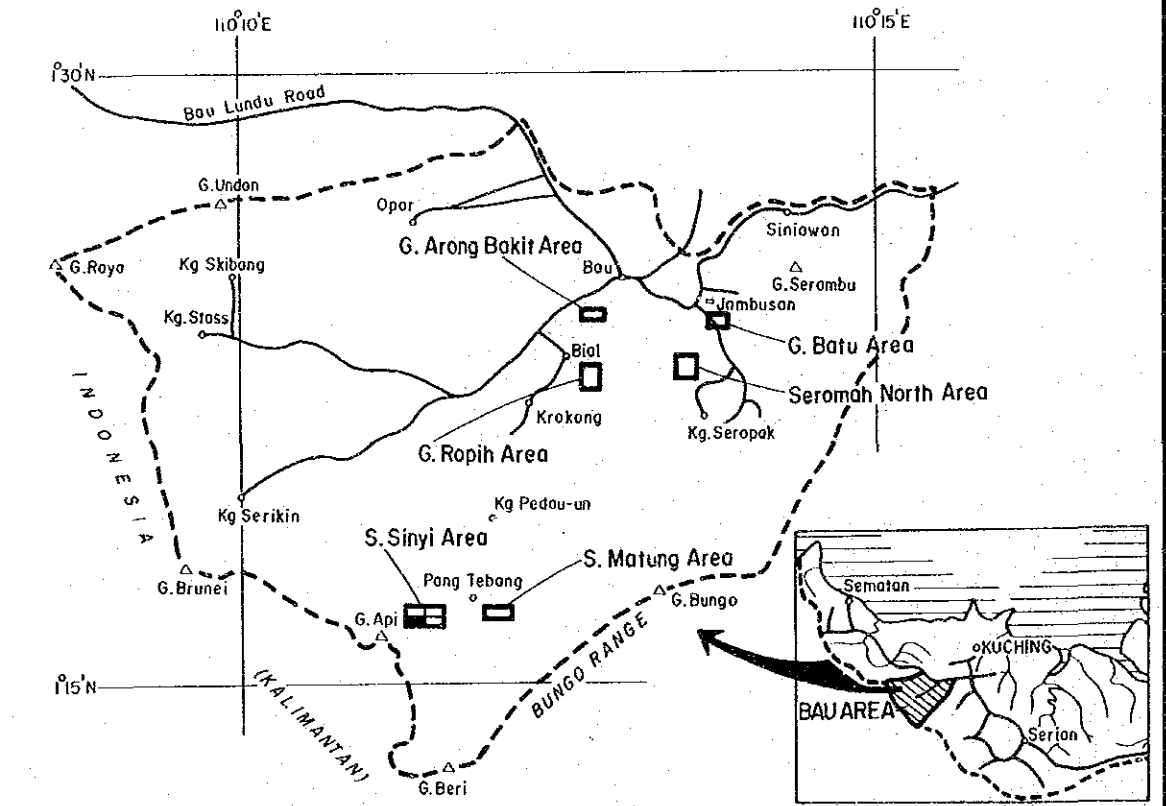




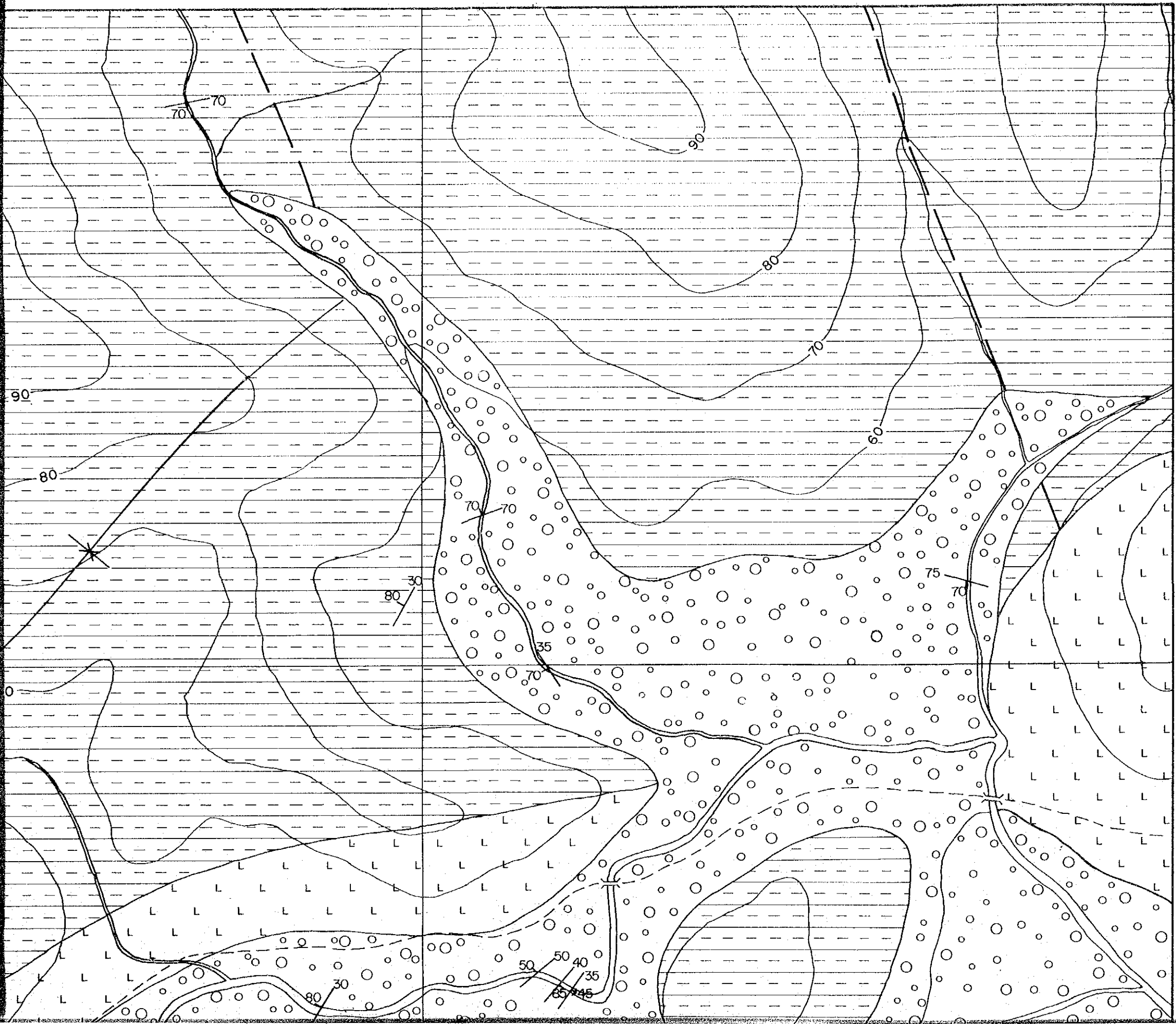
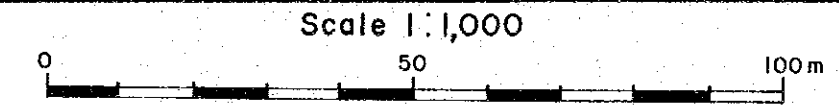
国際協力事業団
11856
圖書資料室蔵書
Map 4-3

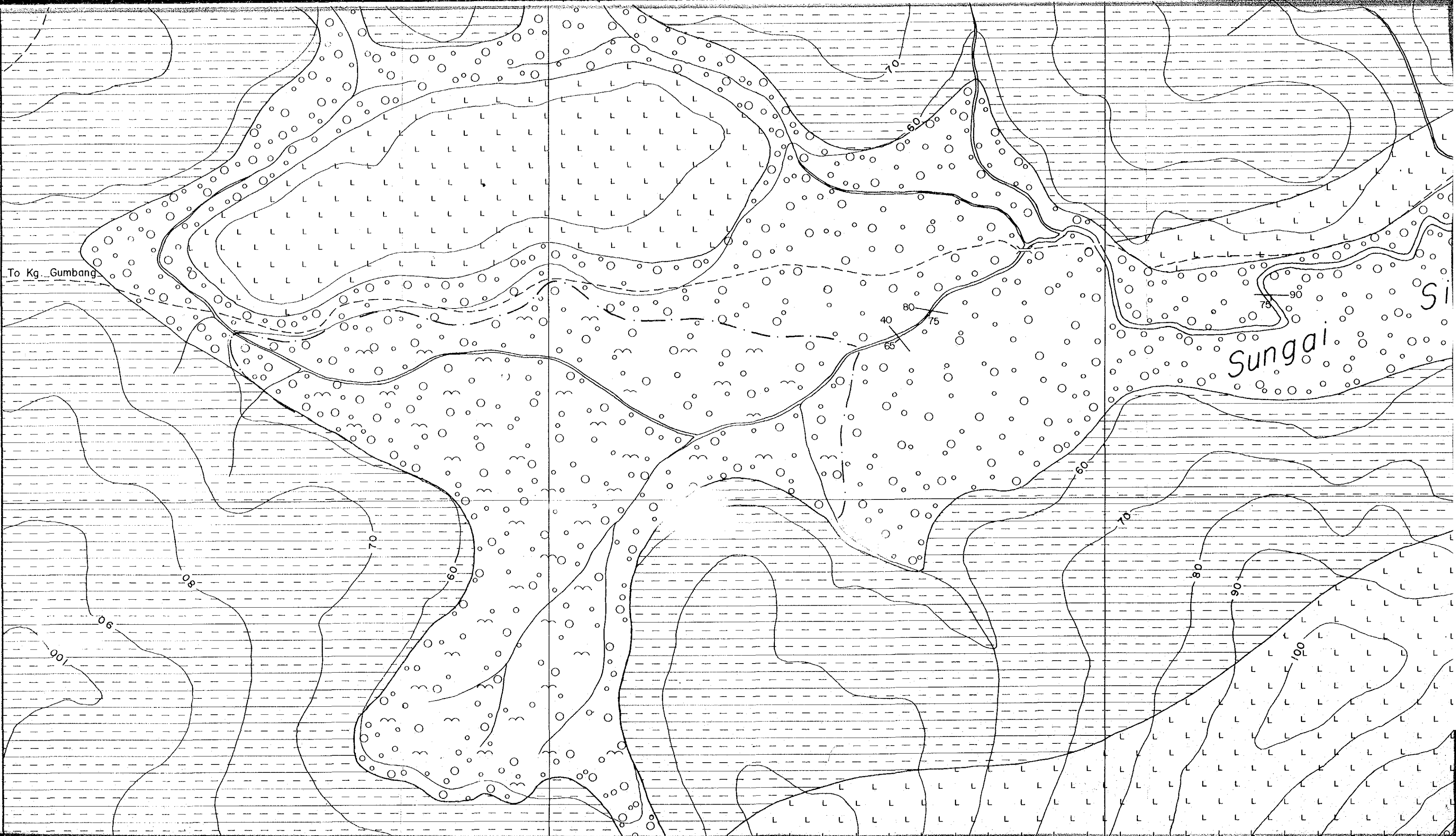
MINERAL EXPLORATION
BAU AREA
WEST SARAWAK, MALAYSIA
PHASE III

Geology of
Sungai Sinyi Area (3)



JAPAN INTERNATIONAL COOPERATION AGENCY
METAL MINING AGENCY OF JAPAN
GEOLOGICAL SURVEY OF MALAYSIA





To Kg. Gumbang

Sungai Si

1040.6

80

80

70

60

40

80

75

65

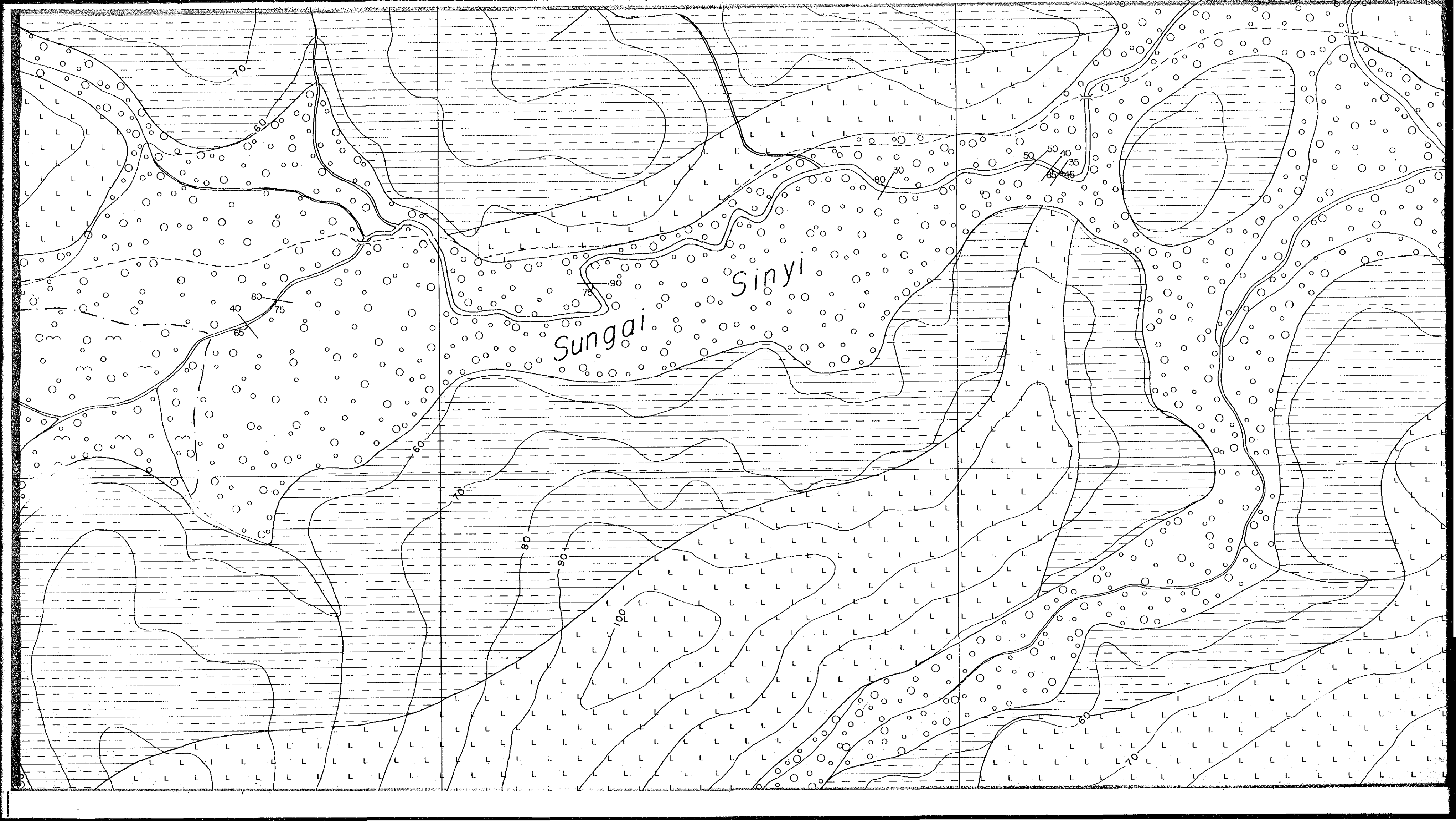
60

70

80

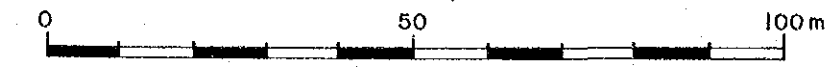
90

100

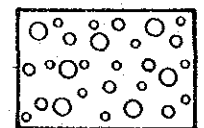


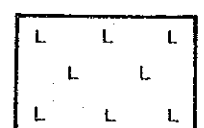
JAPAN INTERNATIONAL COOPERATION AGENCY
 METAL MINING AGENCY OF JAPAN
 GEOLOGICAL SURVEY OF MALAYSIA

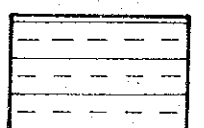
Scale 1:1,000

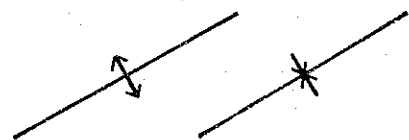


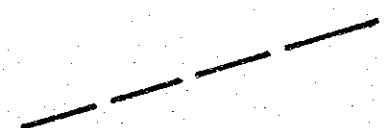
LEGEND

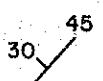
Quaternary
 Alluvium
 gravel and sand

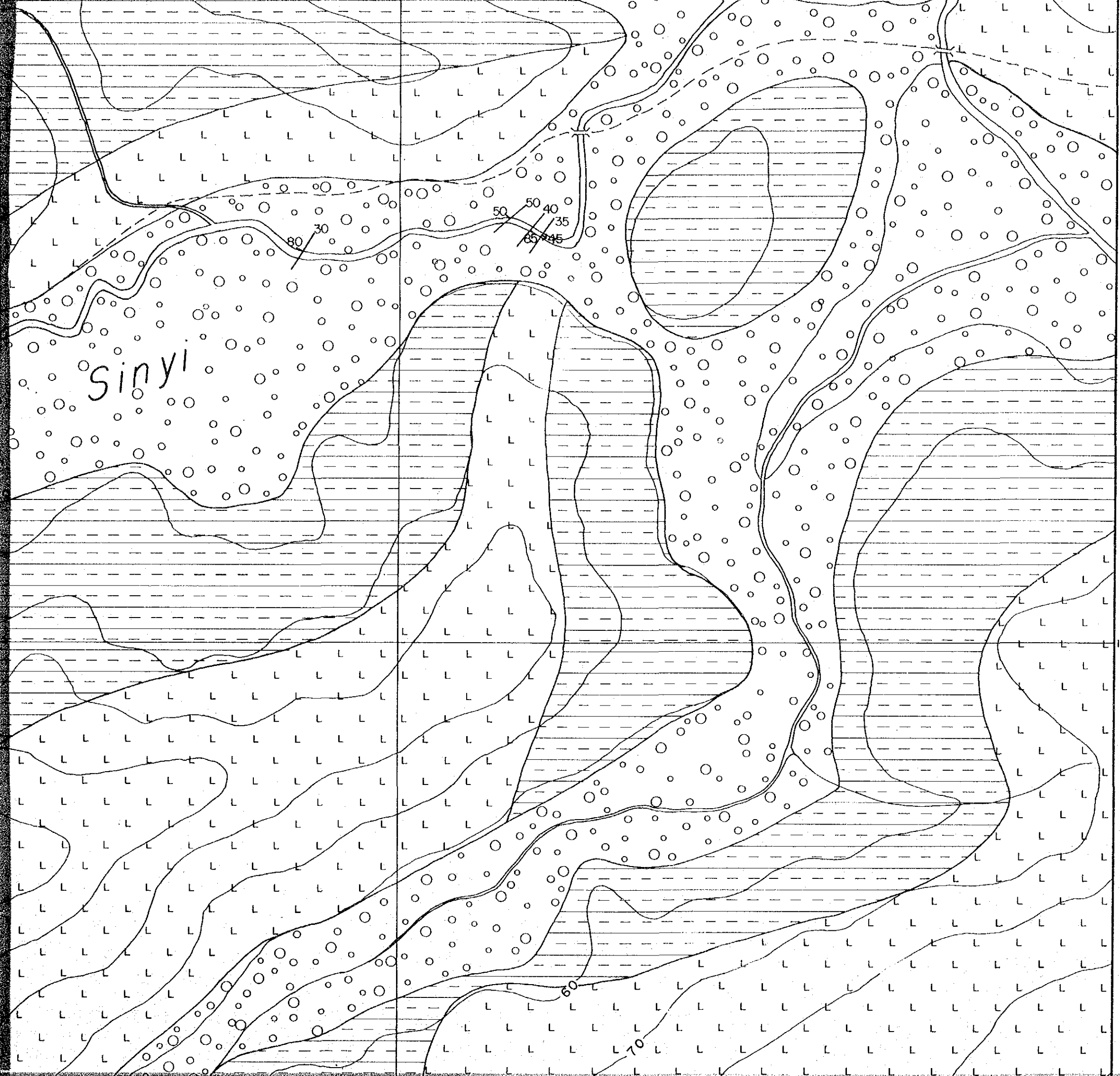
Neogene Tertiary
 Acidic Intrusive
 dacite

Cretaceous Pedawan Formation
 bedded
 fine-grained sandstone
 siltstone and shale

 anticlinal and
 synclinal axes

 fault

 bedding plane



To Kg. Gumbang

Sungai

Sin

1040.6

3096.8

3907.0

3907.2

SP3022/II/84

