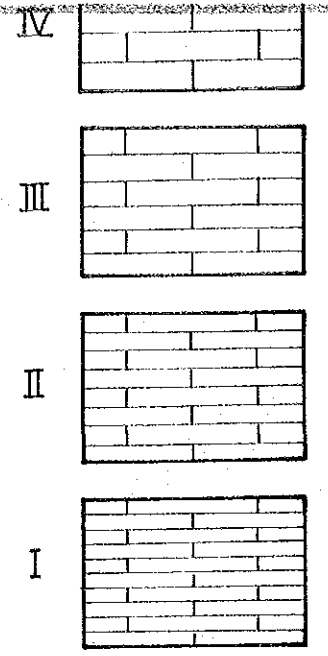


E3920.00

E3920.25

NI051.50

BAU LIMESTONE



IV Grey to brownish grey limestone.
 III Dark grey to dark brownish grey limestone.
 II Greyish black to brownish black limestone.
 I Black argillaceous limestone.



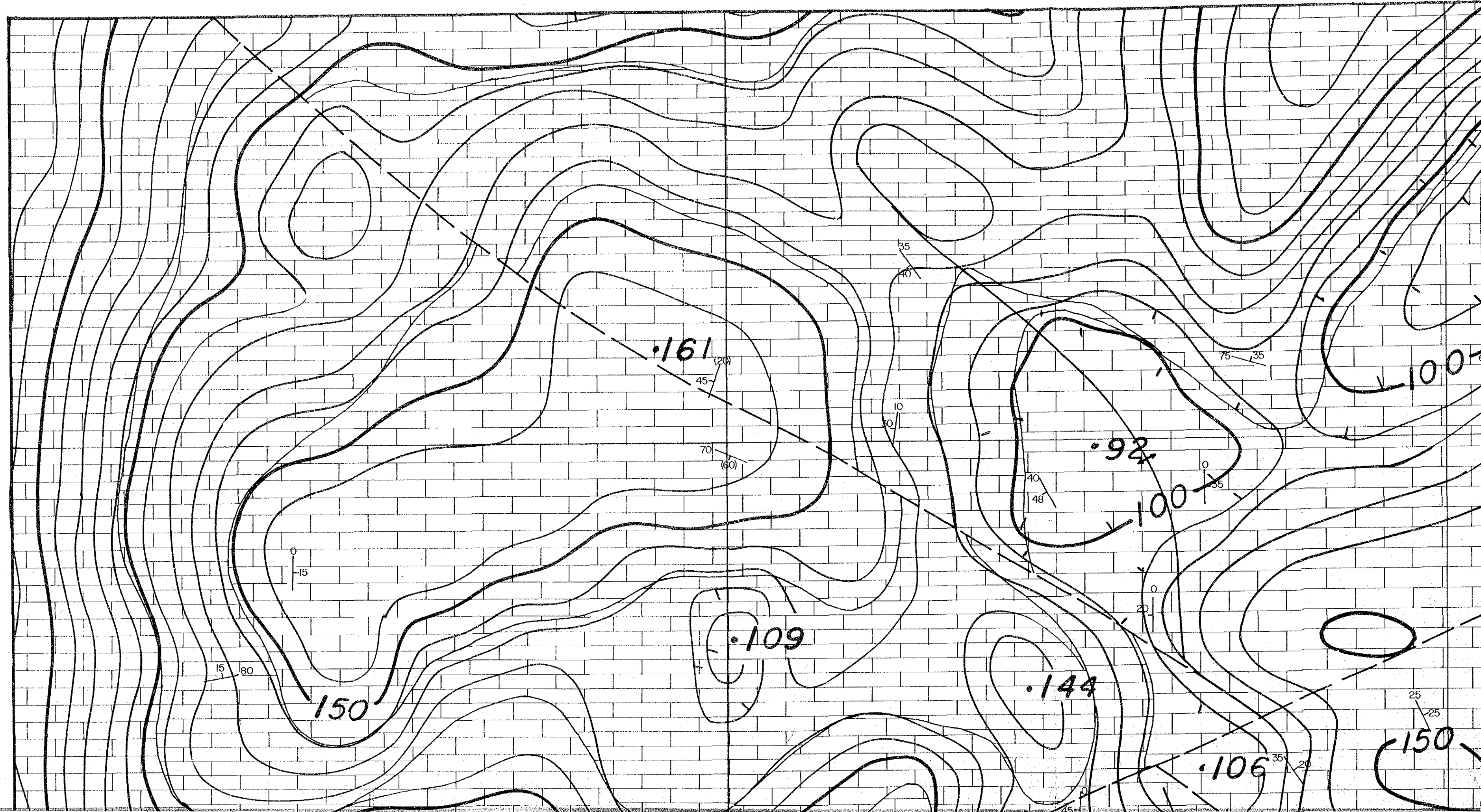
Fault

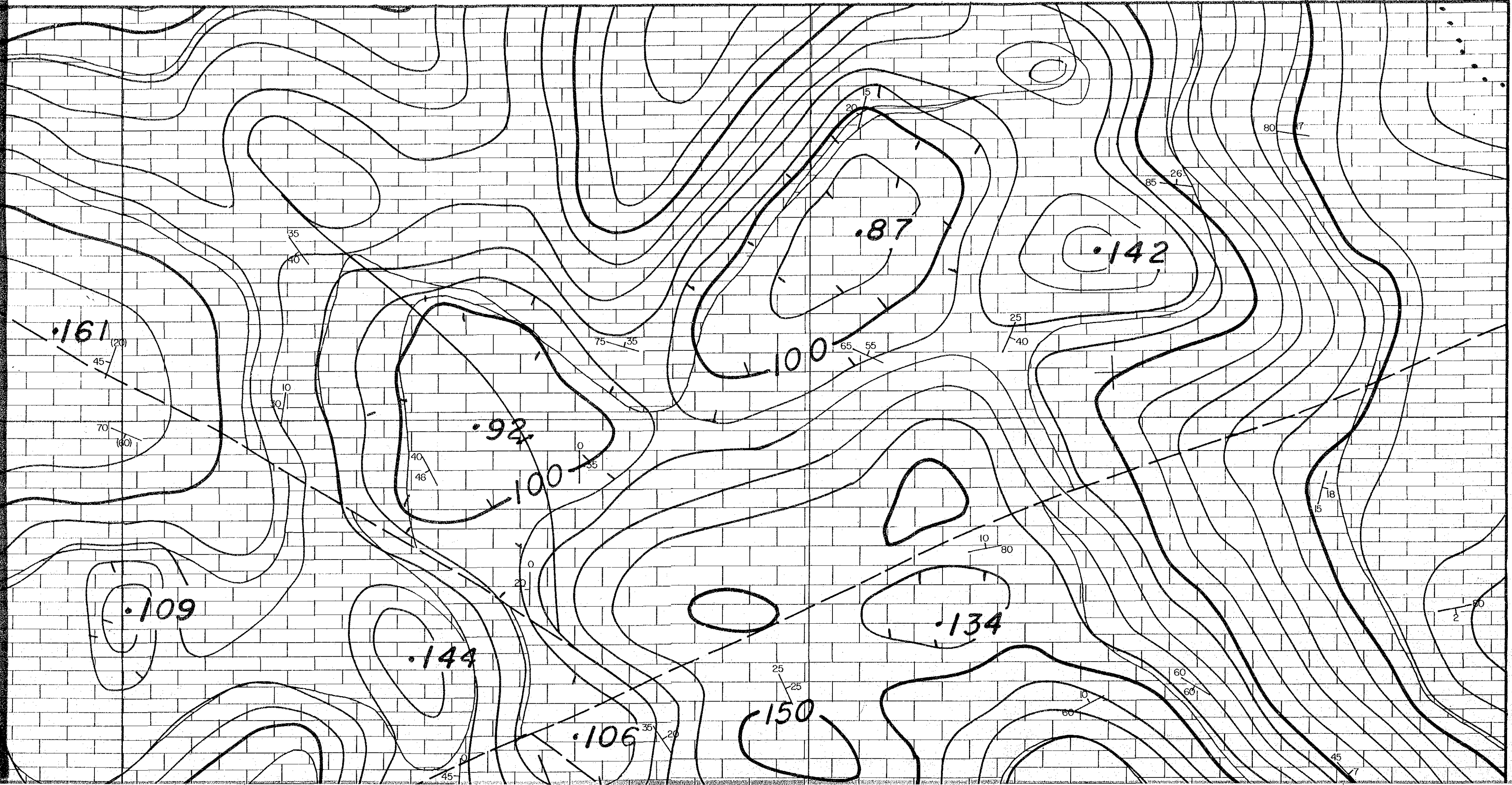


Anticlinal and synclinal axes.



GUNUNG BATU AREA (I)





国際協力事業団

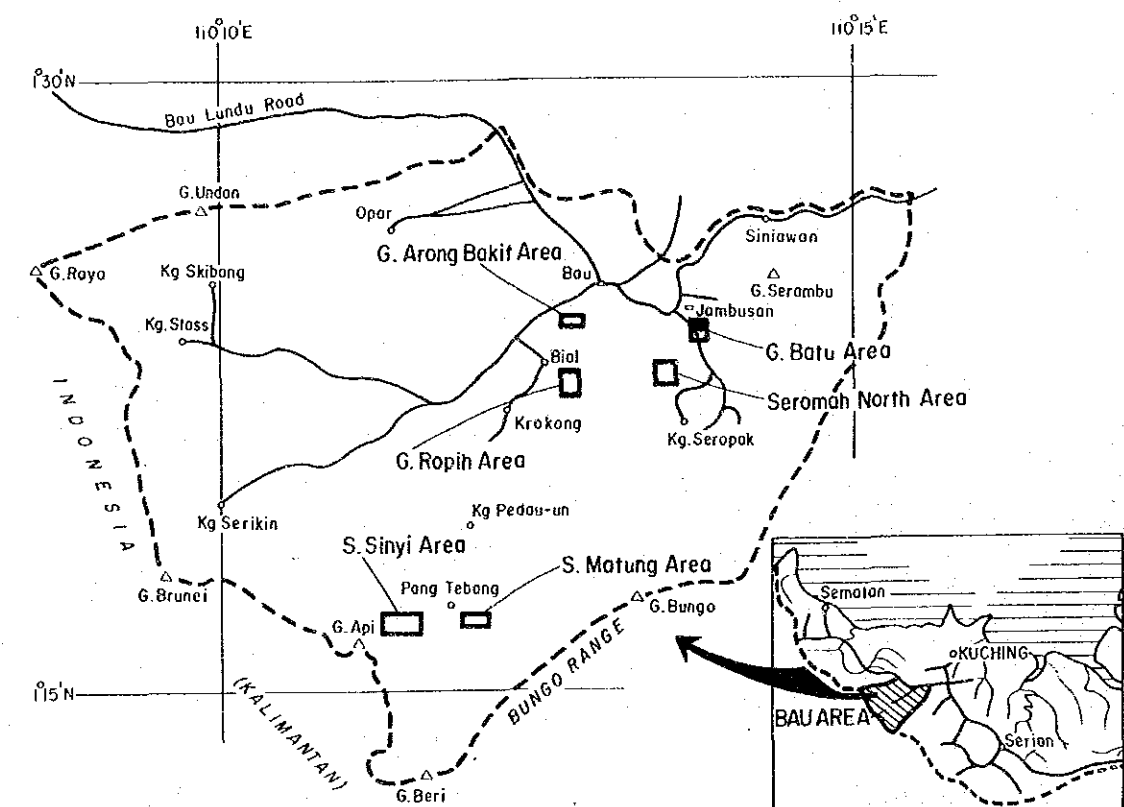
11856

図書資料室蔵書

Map 2-1

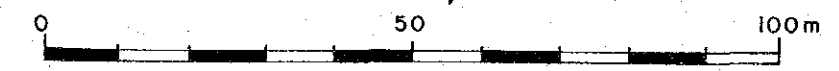
MINERAL EXPLORATION
BAU AREA
WEST SARAWAK, MALAYSIA
PHASE III

Geology of
Gunung Batu Area (1)



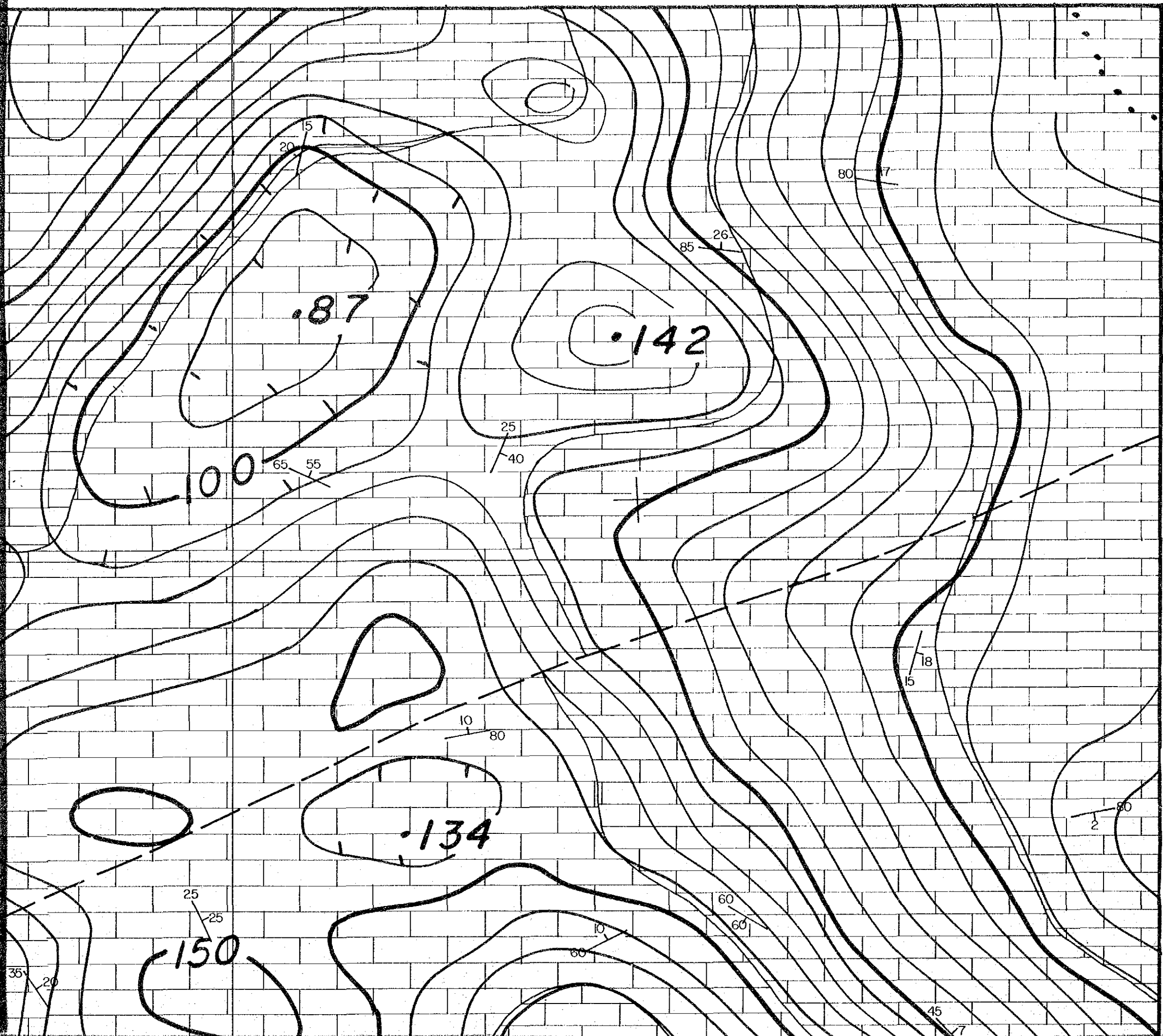
JAPAN INTERNATIONAL COOPERATION AGENCY
METAL MINING AGENCY OF JAPAN
GEOLOGICAL SURVEY OF MALAYSIA

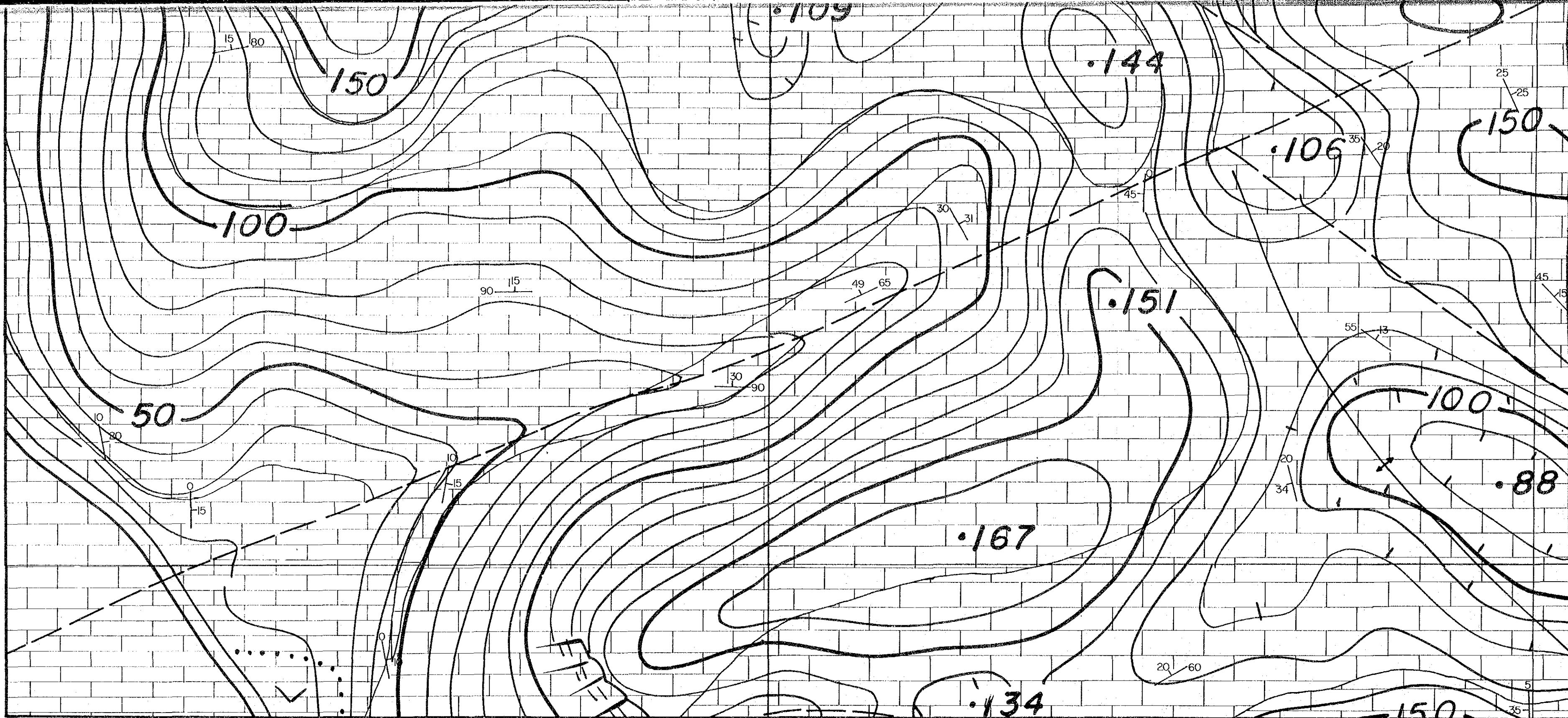
Scale 1:1,000



LEGEND

NI054.75

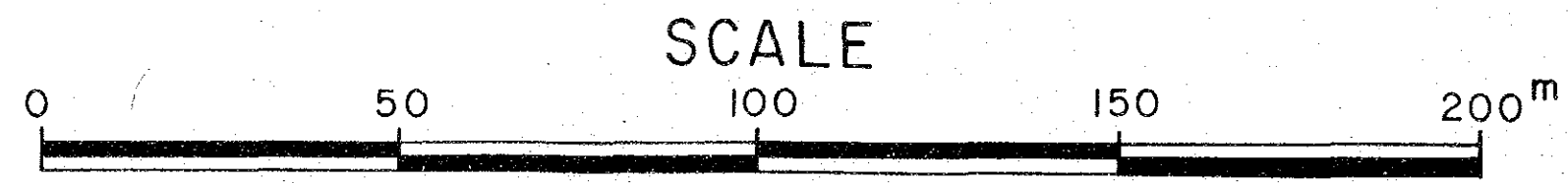


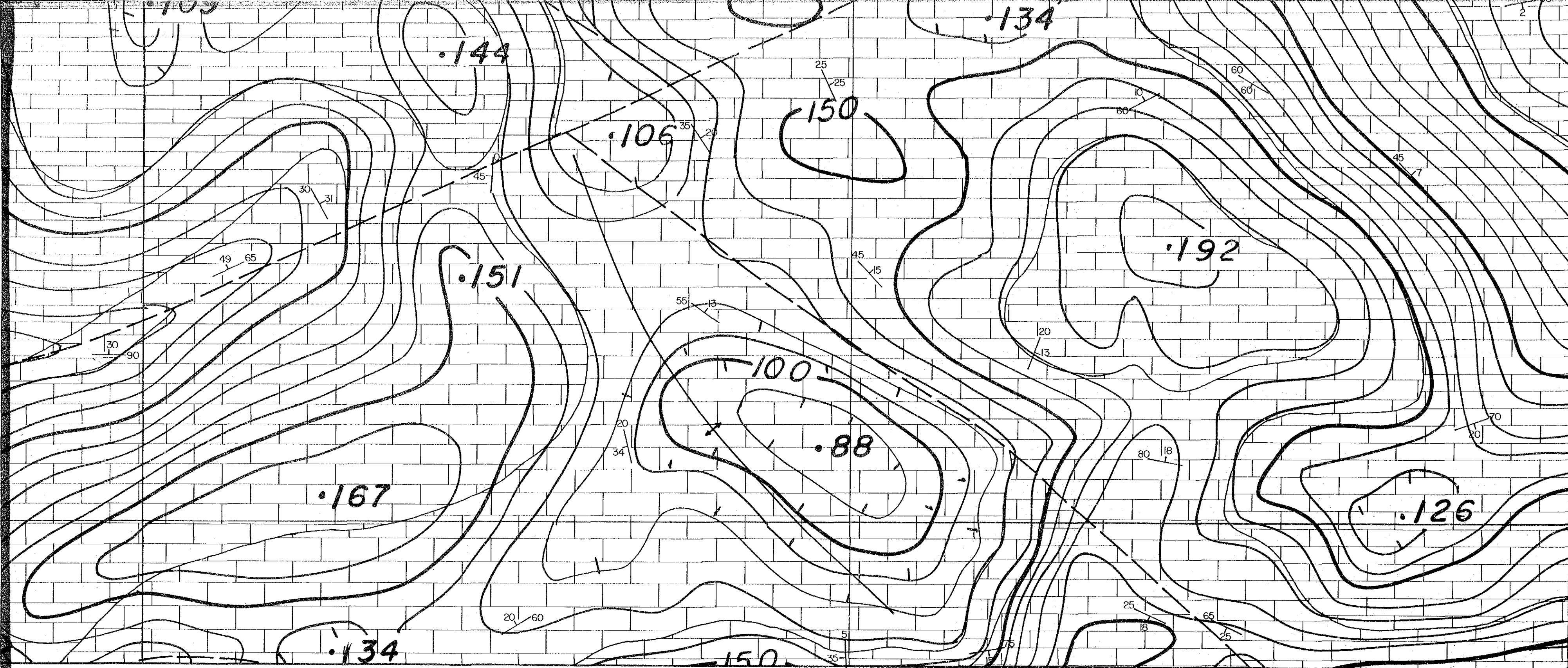


E3920.25
SP3068/12/84

E3920.50

E3920.75



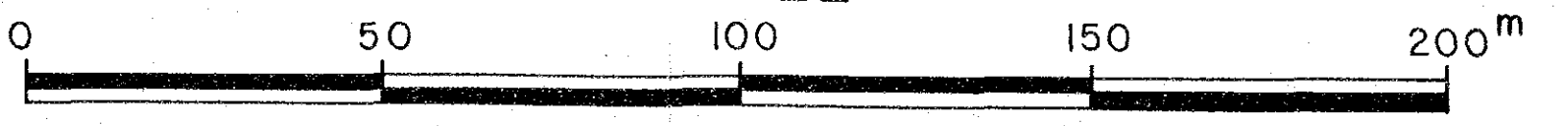


E392050

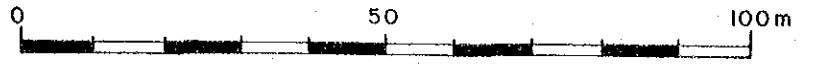
E392075

E392100

SCALE

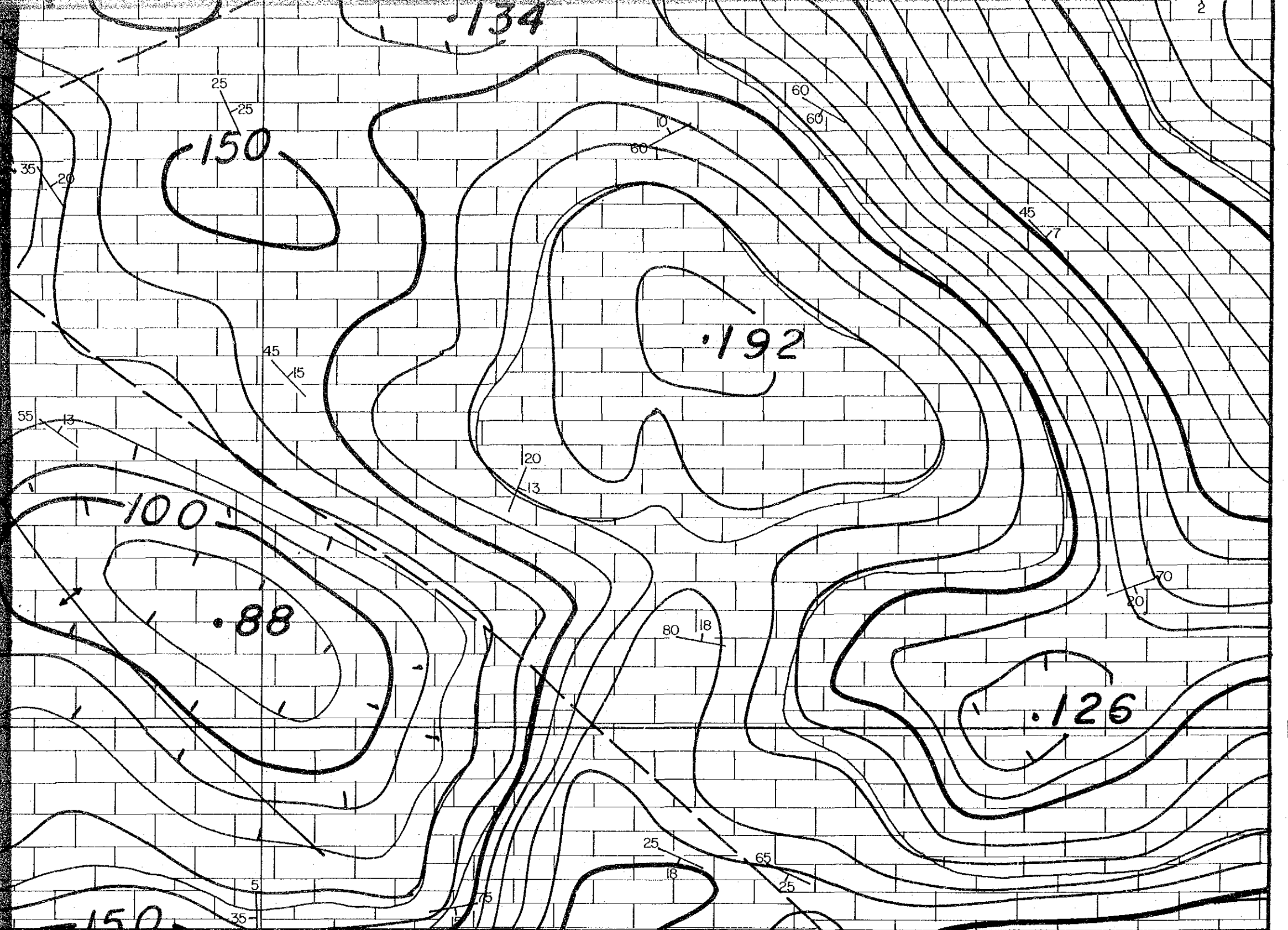


Scale 1:1,000



LEGEND

| | | | |
|---------------|-----|--|--|
| BAU LIMESTONE | VII | | Very pale grey, pure limestone. |
| | VI | | Pale grey, pure limestone. |
| | V | | Light grey limestone. |
| | IV | | Grey to brownish grey limestone. |
| | III | | Dark grey to dark brownish grey limestone. |
| | II | | Greyish black to brownish black limestone. |
| | I | | Black argillaceous limestone. |
| | | | Fault. |
| | | | Anticlinal and synclinal axes. |
| | | | |

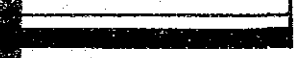


NI054.50

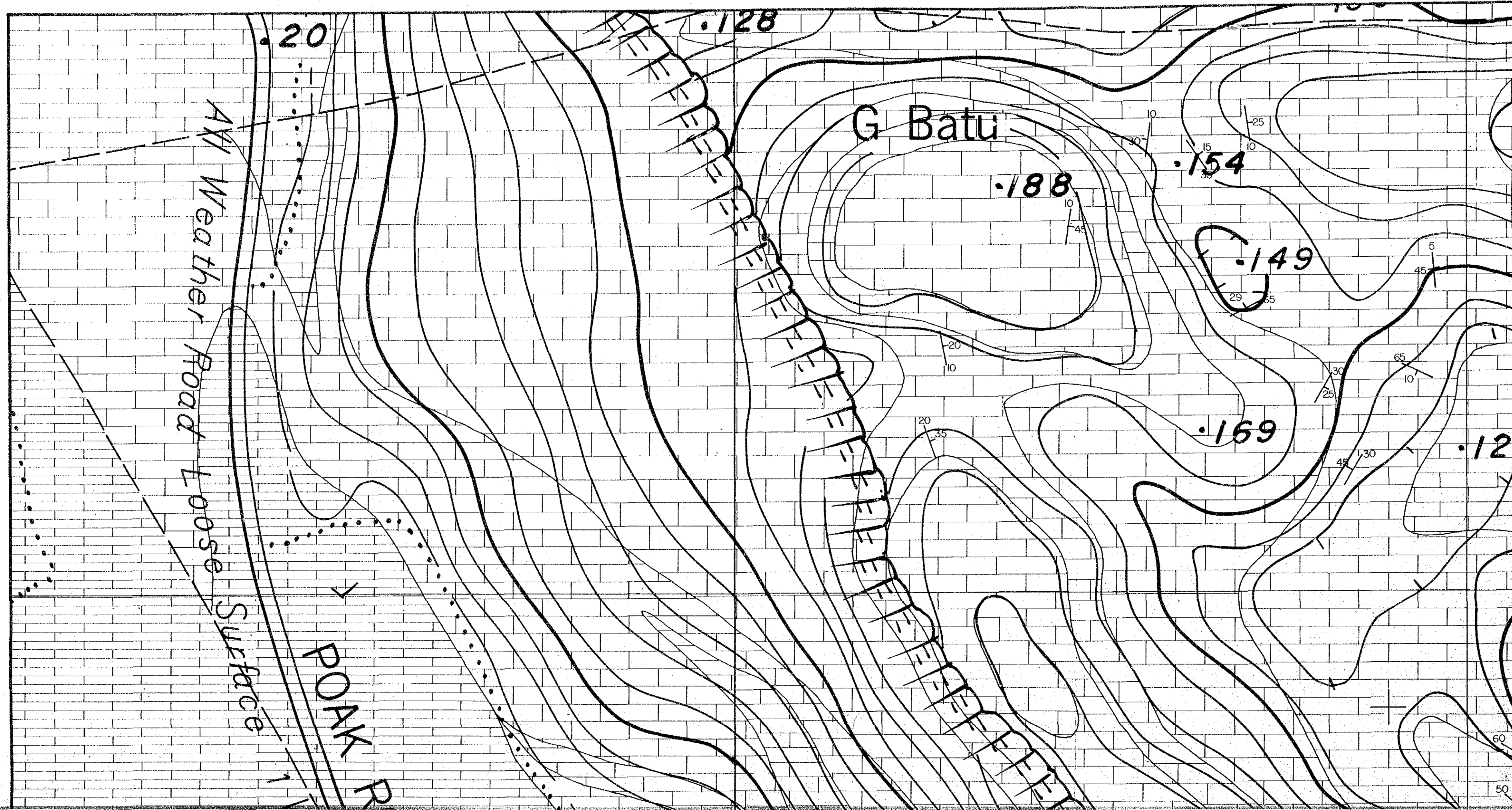
E3920.75

E3921.00

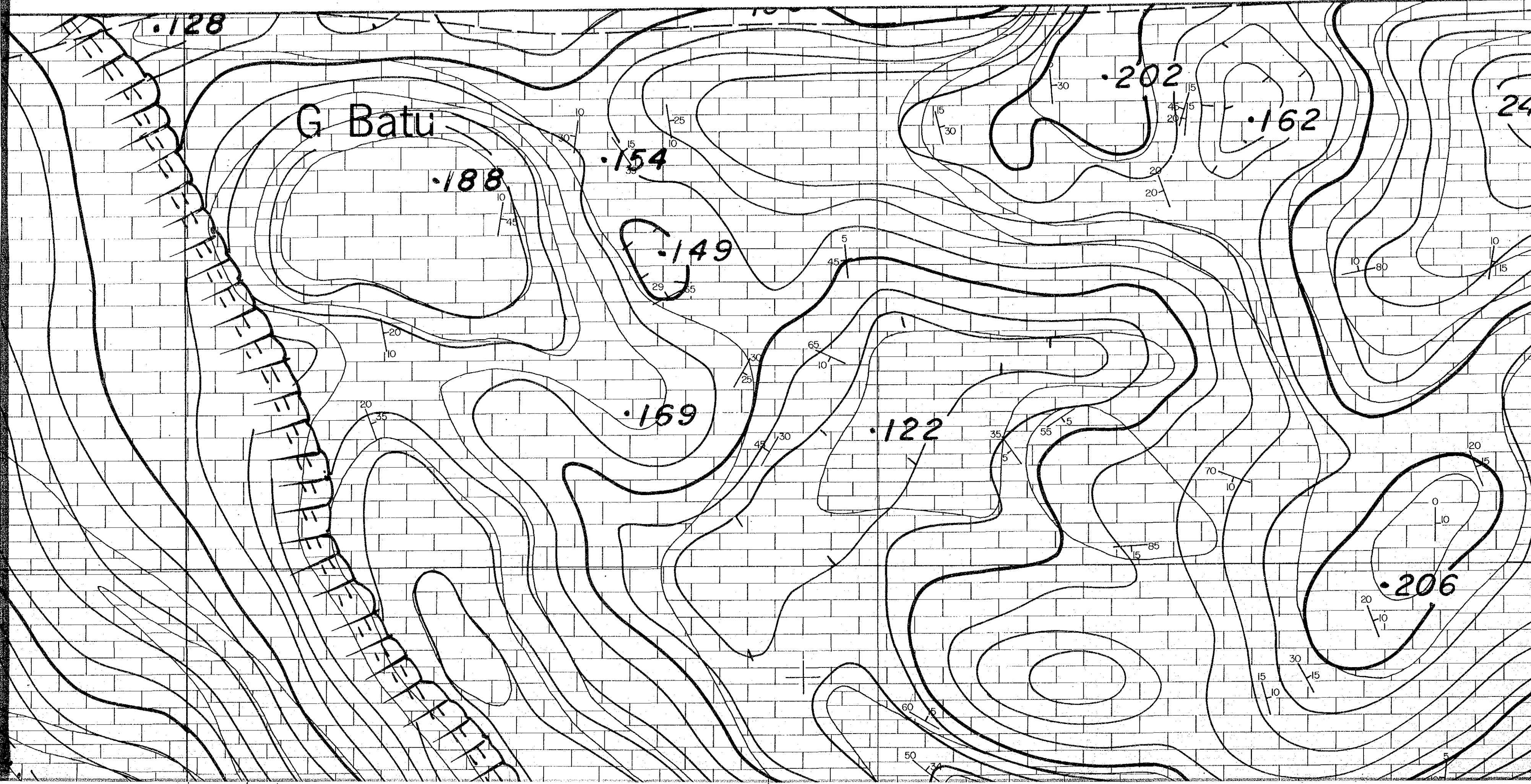
200m

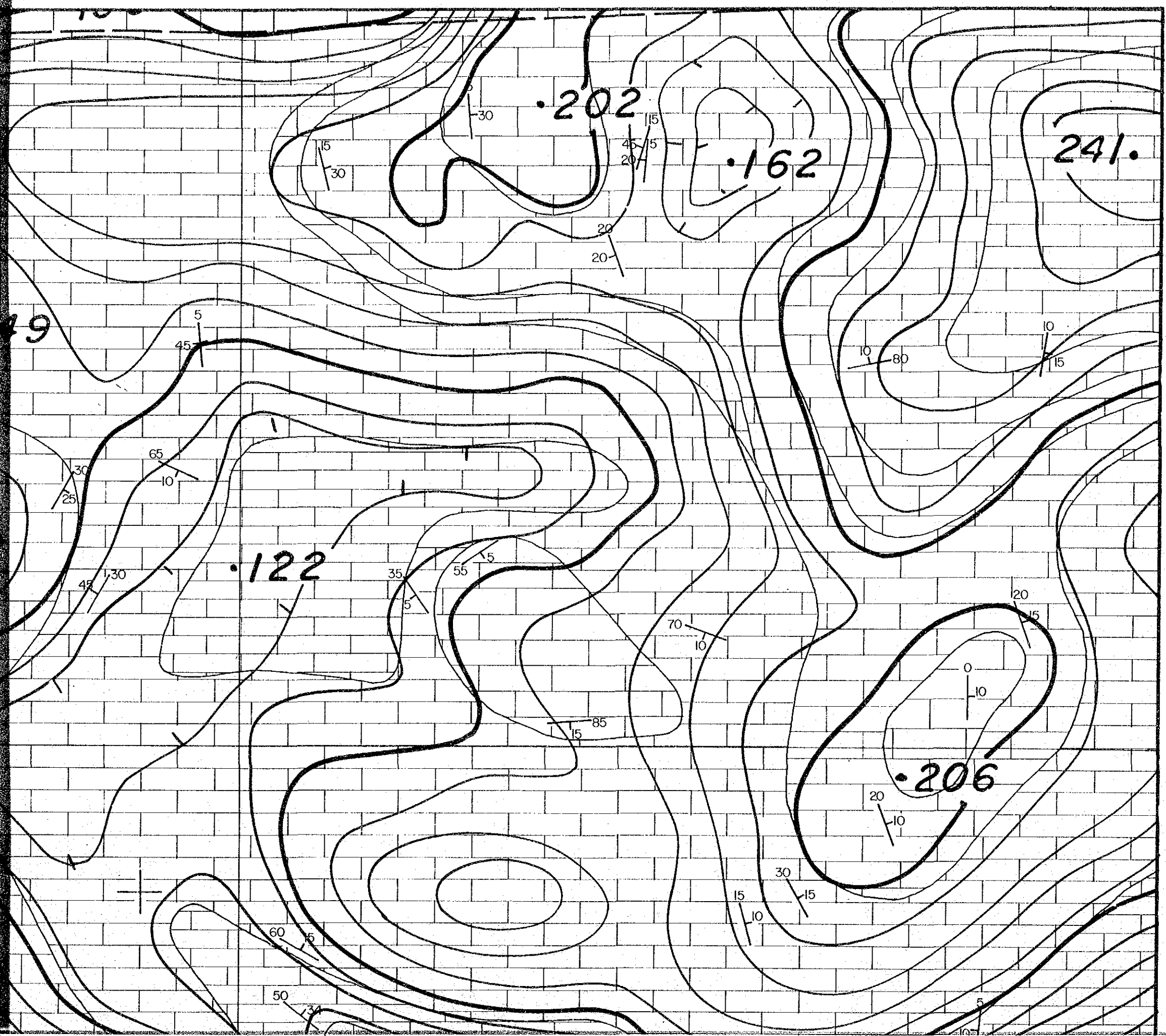


GUNUNG BATU AREA (2)

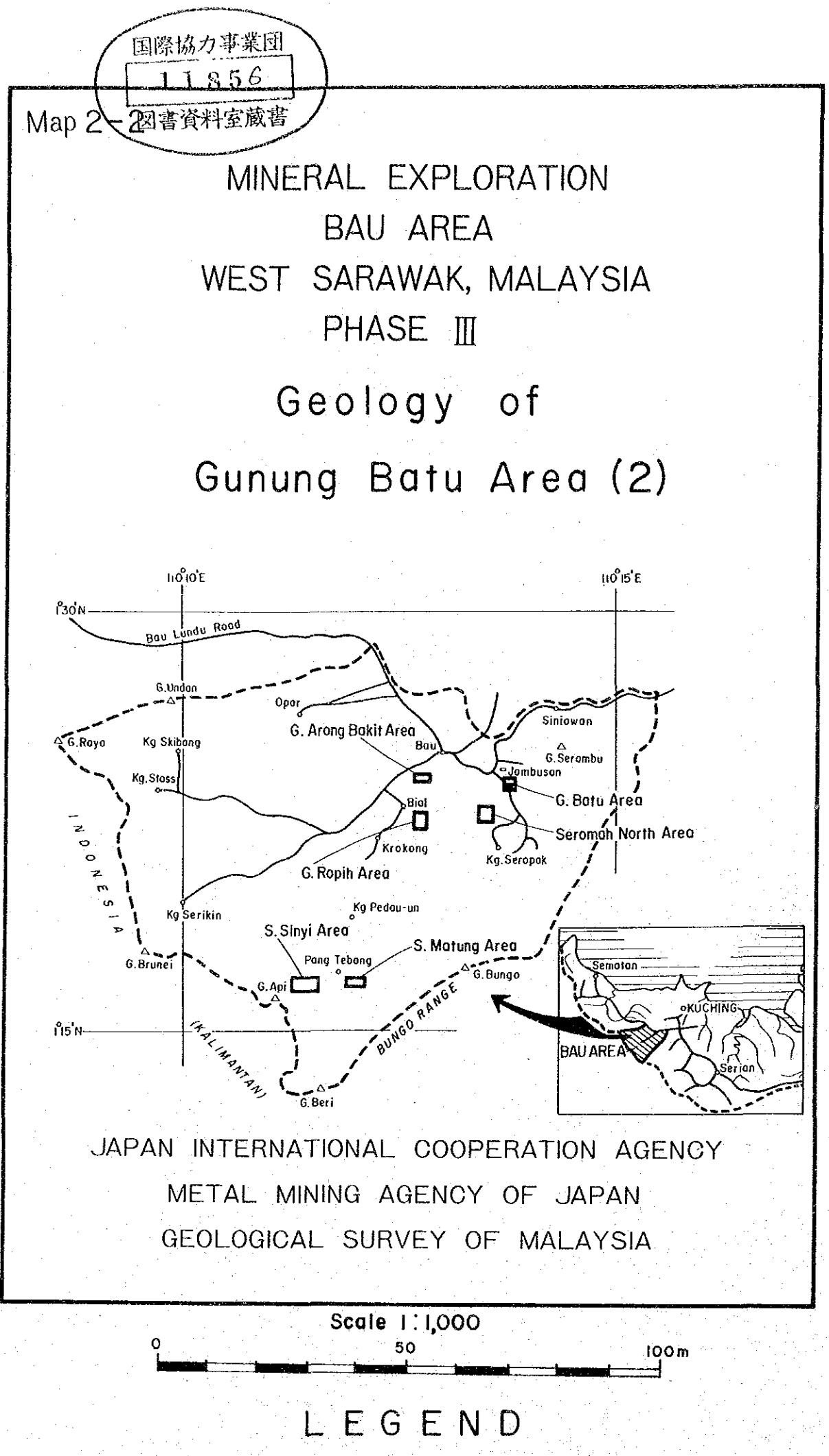


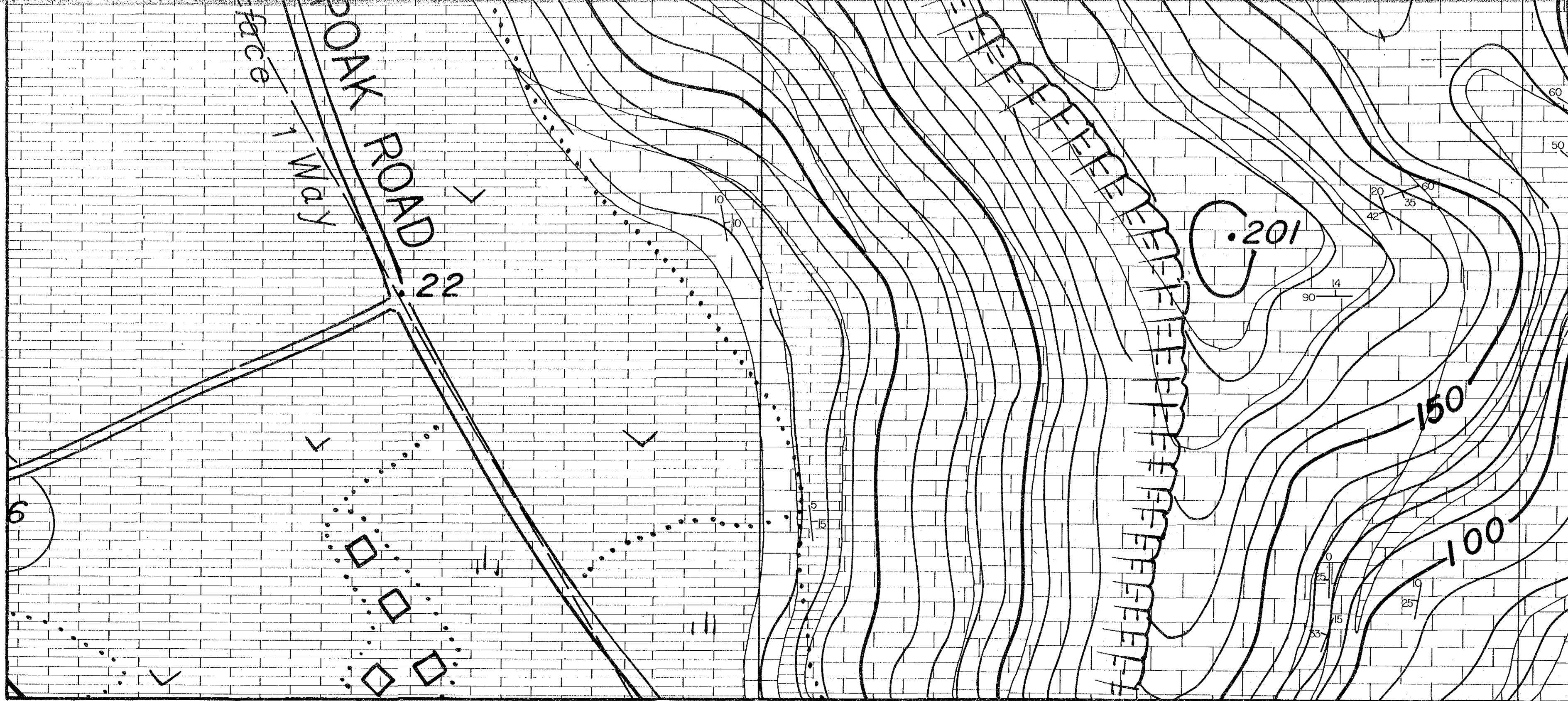
(2)





N1054.25

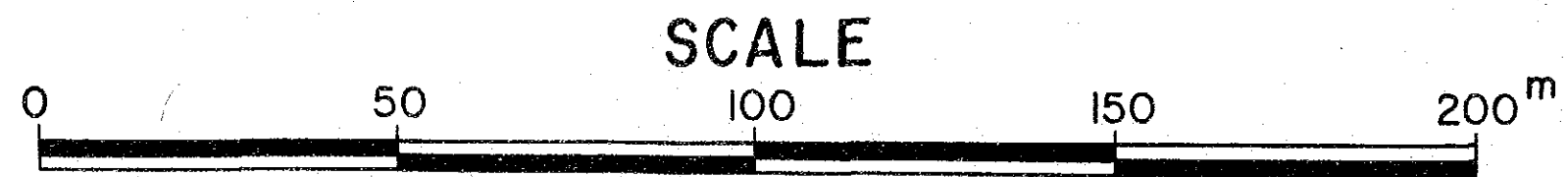


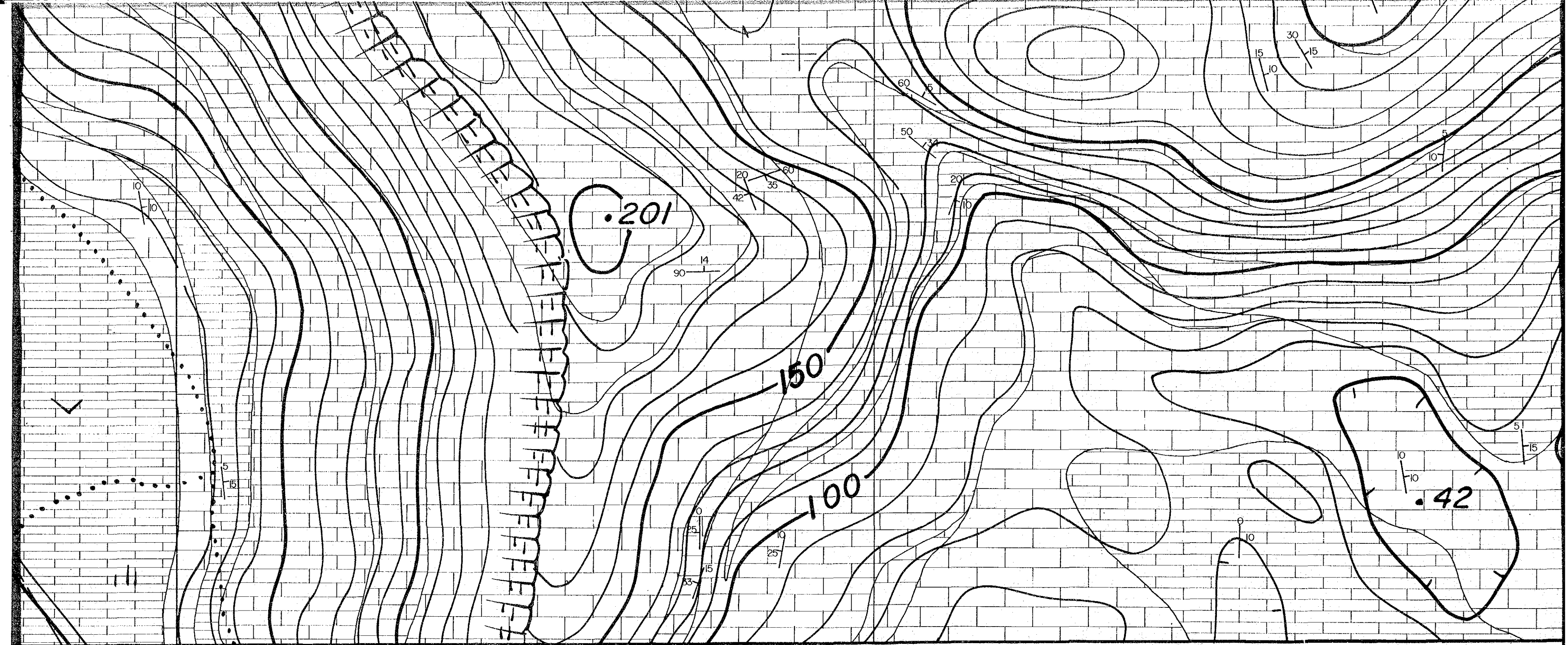


E3920.25
SP3069/12/84

E3920.50

E3920.75



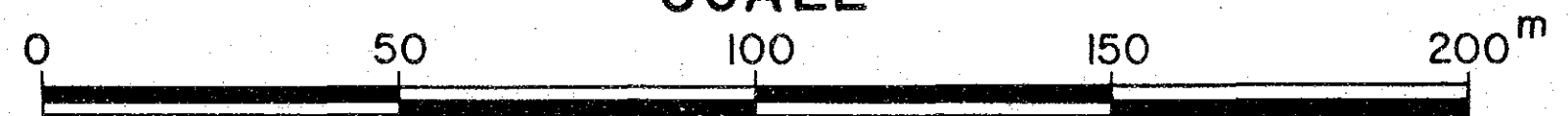


E3920.50

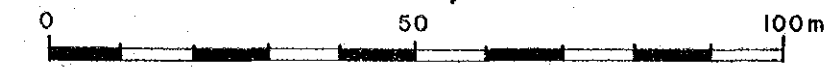
E3920.75

E39

SCALE

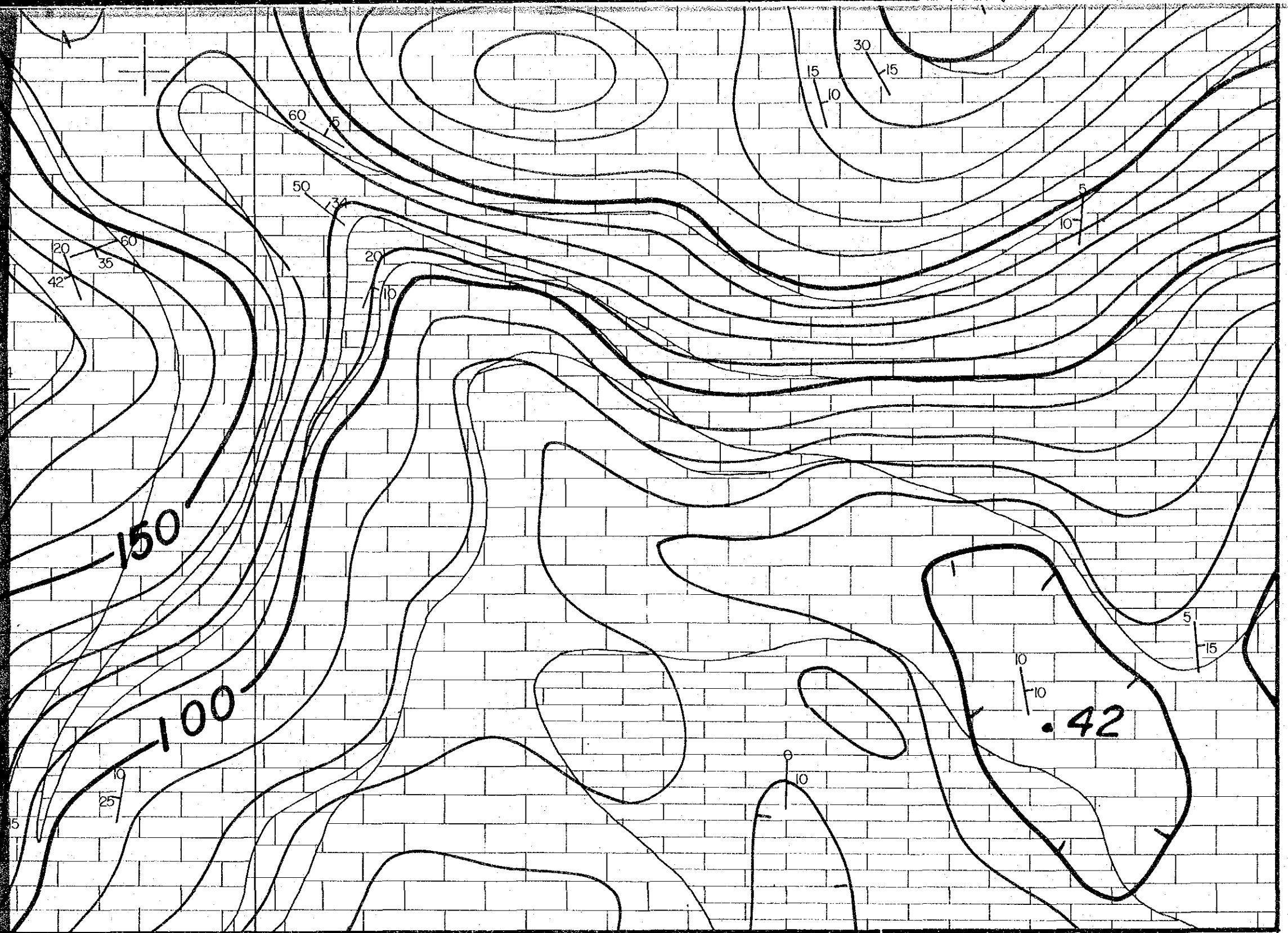


Scale 1:1,000



LEGEND

- | | | |
|-----|--|--|
| VII | | Very pale grey, pure limestone. |
| VI | | Pale grey, pure limestone. |
| V | | Light grey limestone. |
| IV | | Grey to brownish grey limestone. |
| III | | Dark grey to dark brownish grey limestone. |
| II | | Greyish black to brownish black limestone. |
| I | | Black argillaceous limestone. |
- | | | |
|--|--|--------------------------------|
| | | Fault. |
| | | Anticlinal and synclinal axes. |



N1054.00
E3921.00

E3920.75

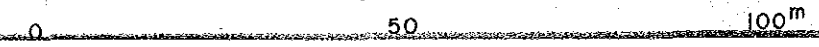
200m



GUNUNG ARONG BAKIT AREA



SCALE



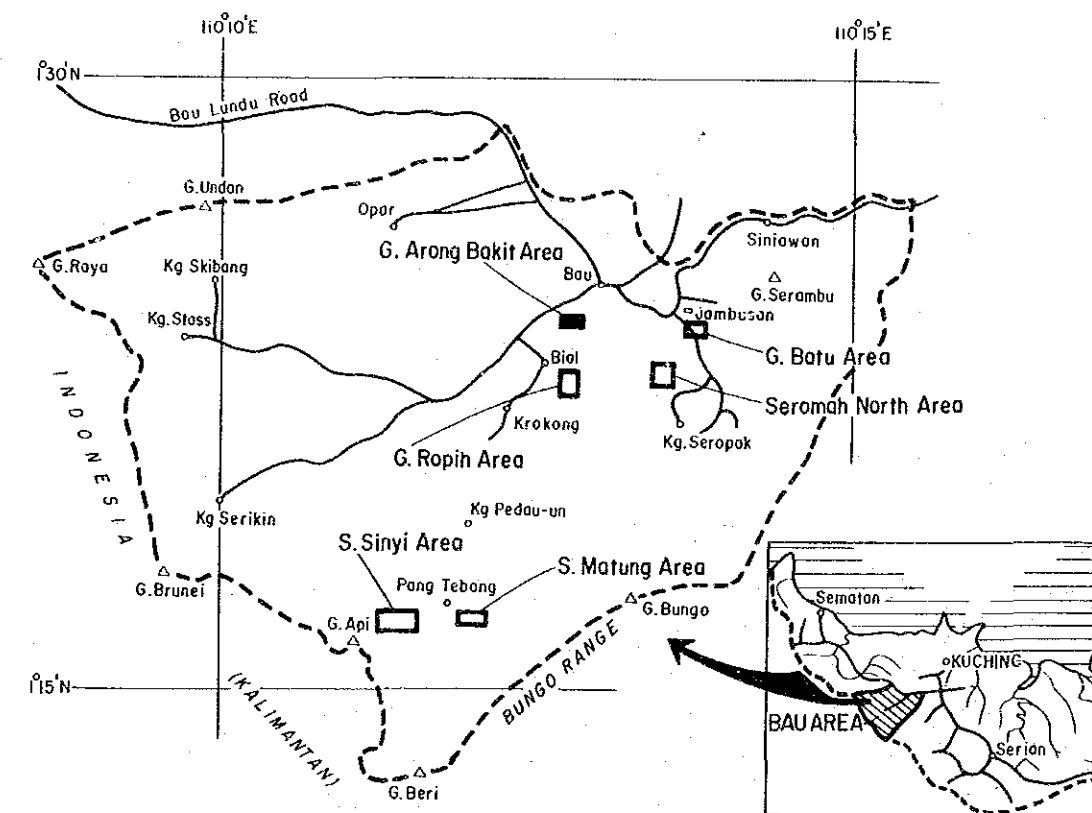
国際協力事業団

11856

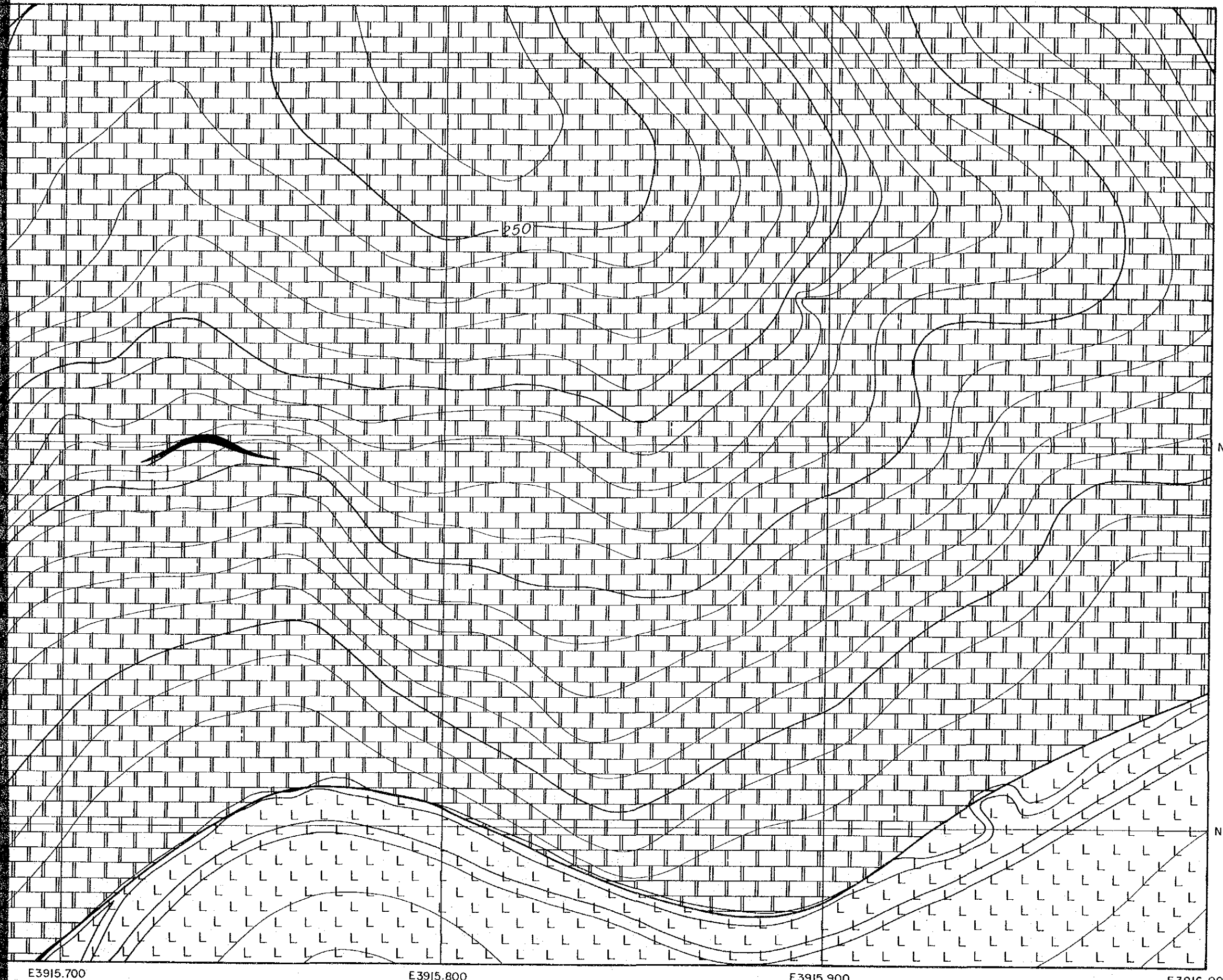
図書資料室蔵書

Map 3

MINERAL EXPLORATION
 BAU AREA
 WEST SARAWAK, MALAYSIA
 PHASE III
 Geology of
 Gunung Arong Bakit Area



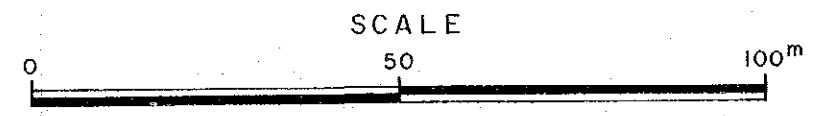
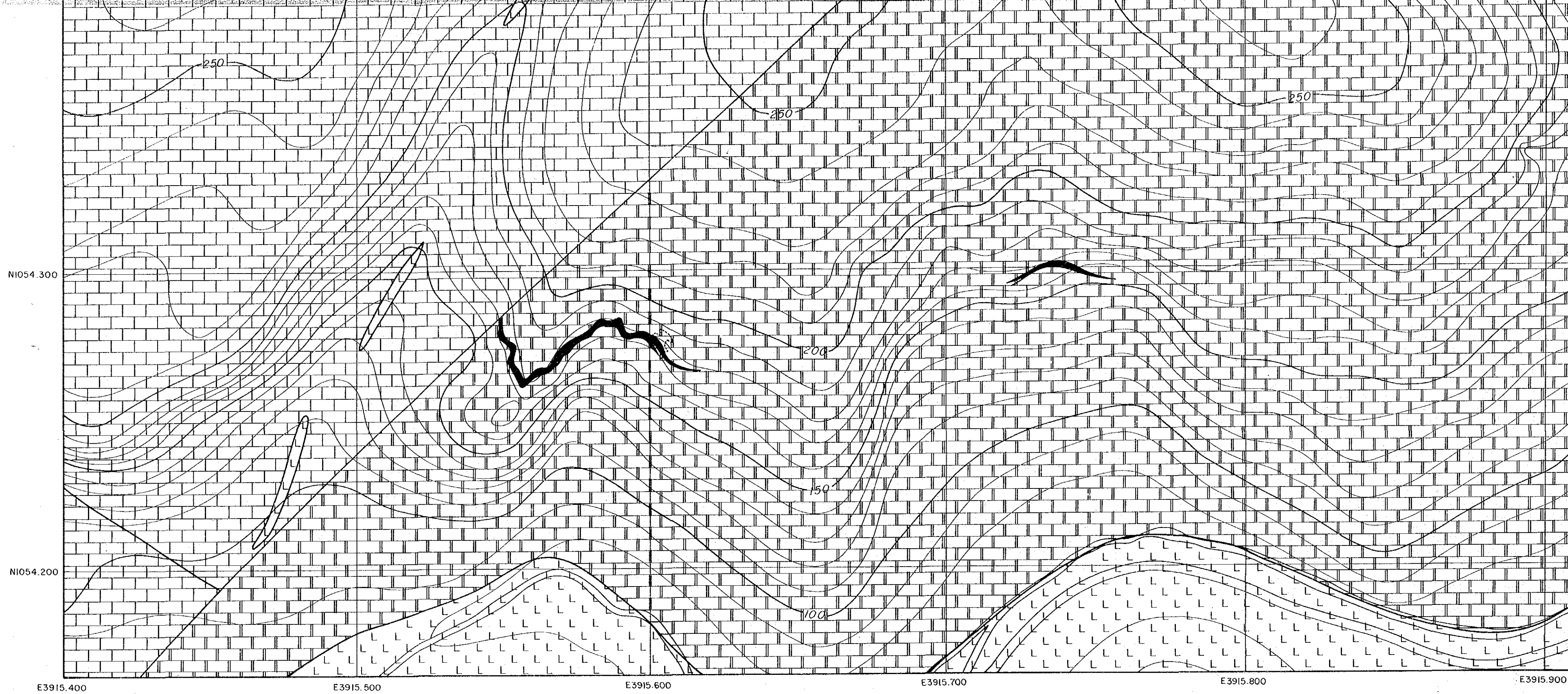
JAPAN INTERNATIONAL COOPERATION AGENCY
 METAL MINING AGENCY OF JAPAN
 GEOLOGICAL SURVEY OF MALAYSIA



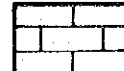

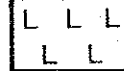


SCALE

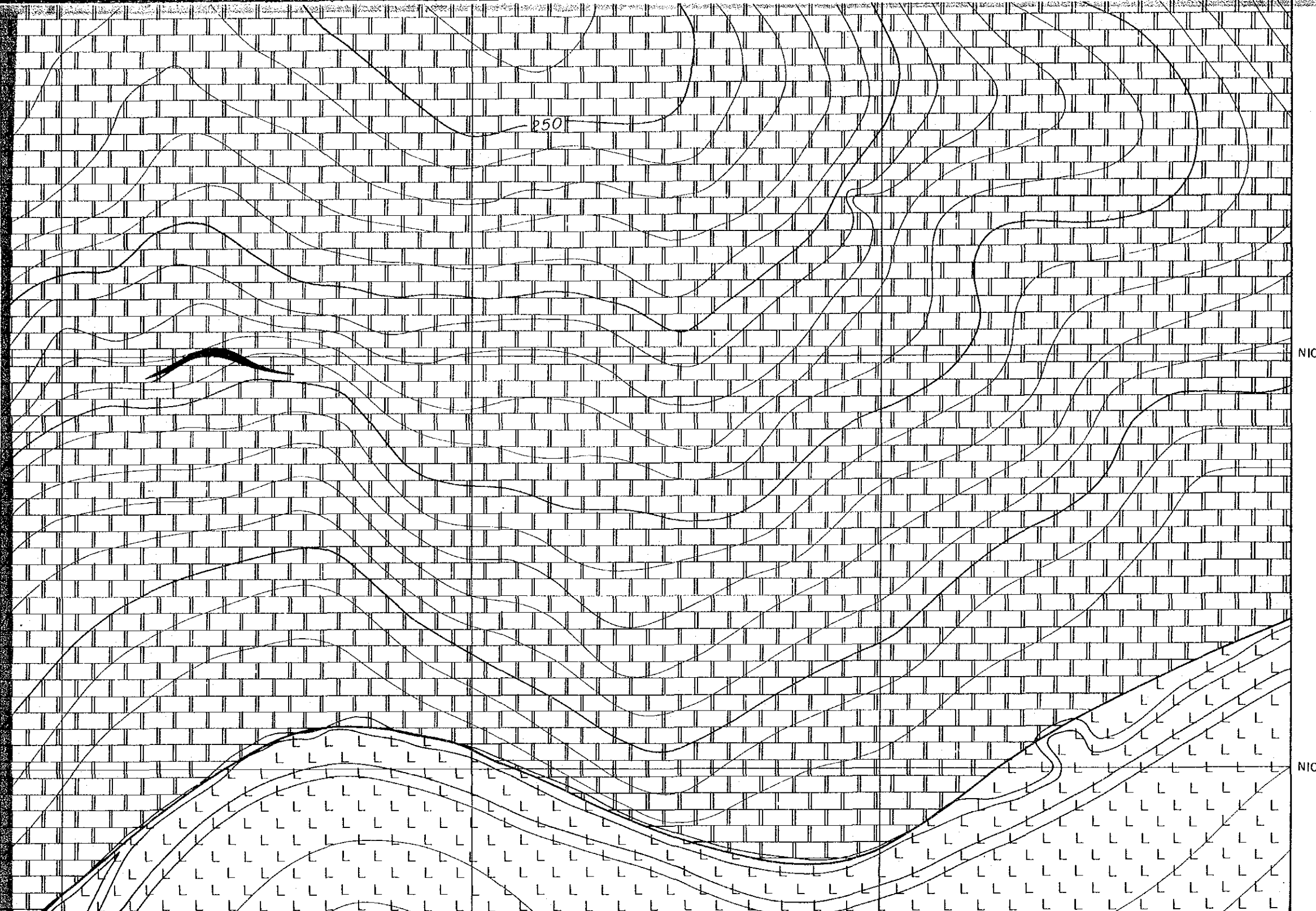
50

100m

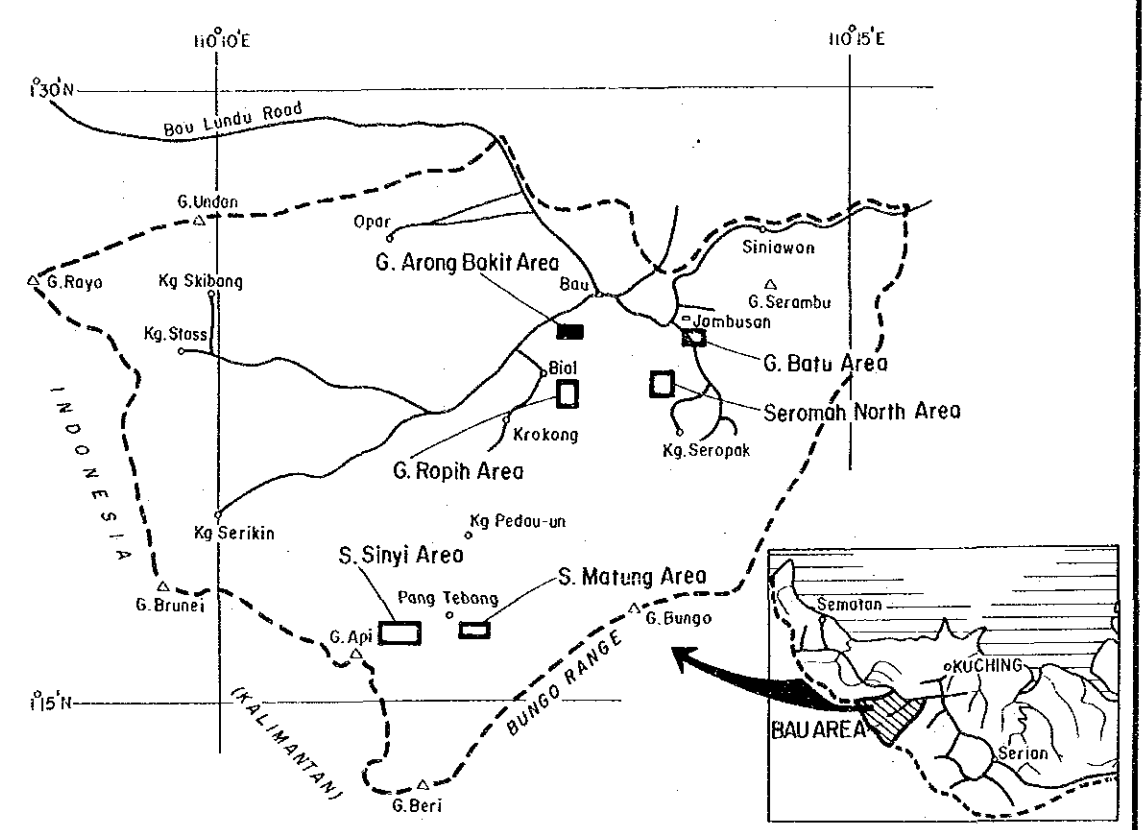


LEGEND

- | | | | |
|---|--|---|--|
| BAU LIMESTONE | | ACIDIC INTRUSIVES | |
|  Dark grey limestone |  Marble |  Quartz porphyry |  Quartz-calcic vein |
| | | |  Fault |



WEST SARAWAK, MALAYSIA
 PHASE III
 Geology of
 Gunung Arong Bakit Area



JAPAN INTERNATIONAL COOPERATION AGENCY
 METAL MINING AGENCY OF JAPAN
 GEOLOGICAL SURVEY OF MALAYSIA

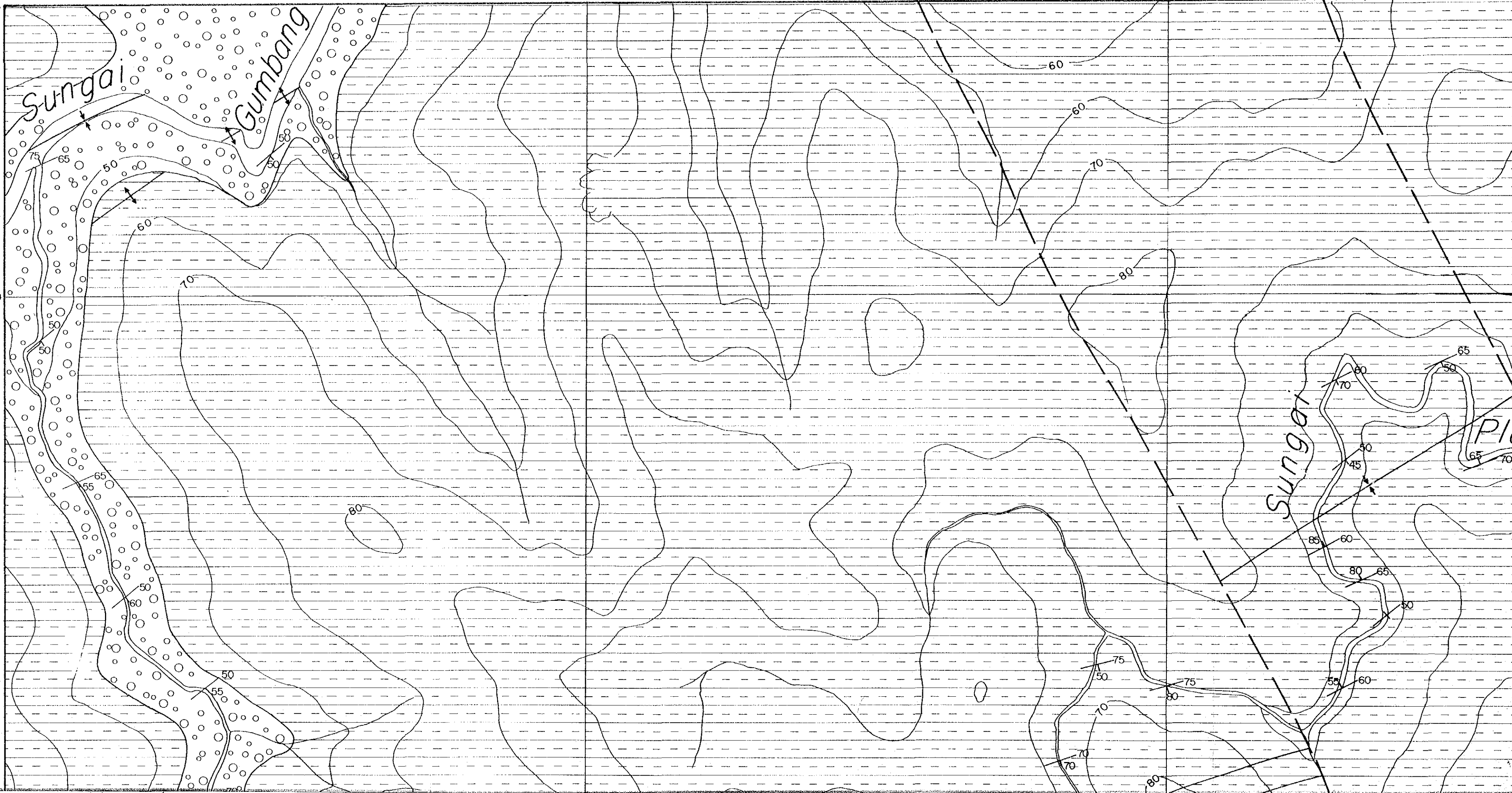


LEGEND

- Marble
- ACIDIC INTRUSIVES
 - Quartz porphyry
 - Quartz-calcilicate vein
- Fault

1041.5

1041.4



Sungai

Sungai

Gumbang

PIC

