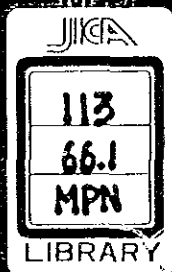


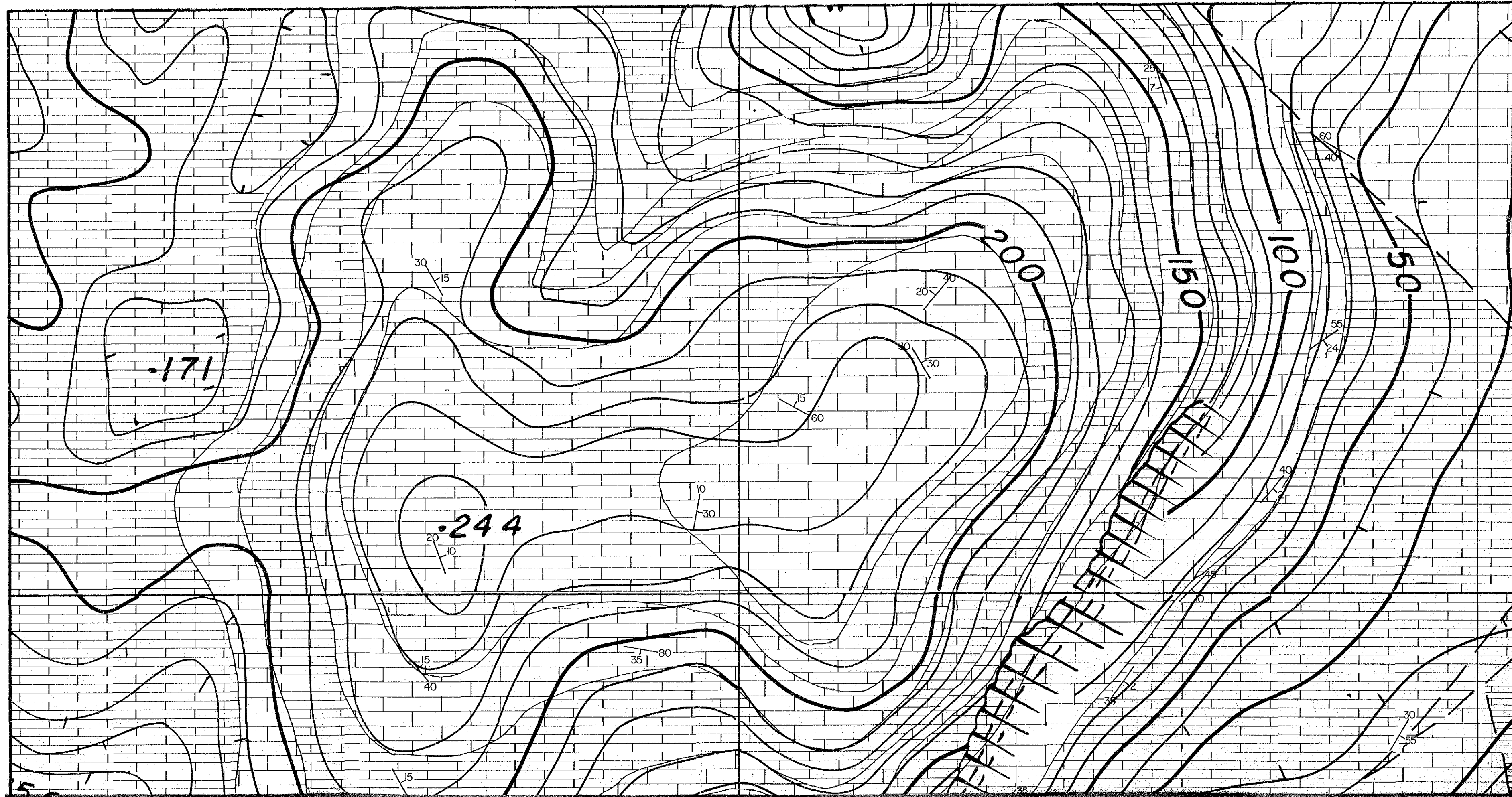
REPORT ON THE COLLABORATIVE  
MINERAL EXPLORATION OF THE  
BAU AREA WEST SARAWAK MALAYSIA

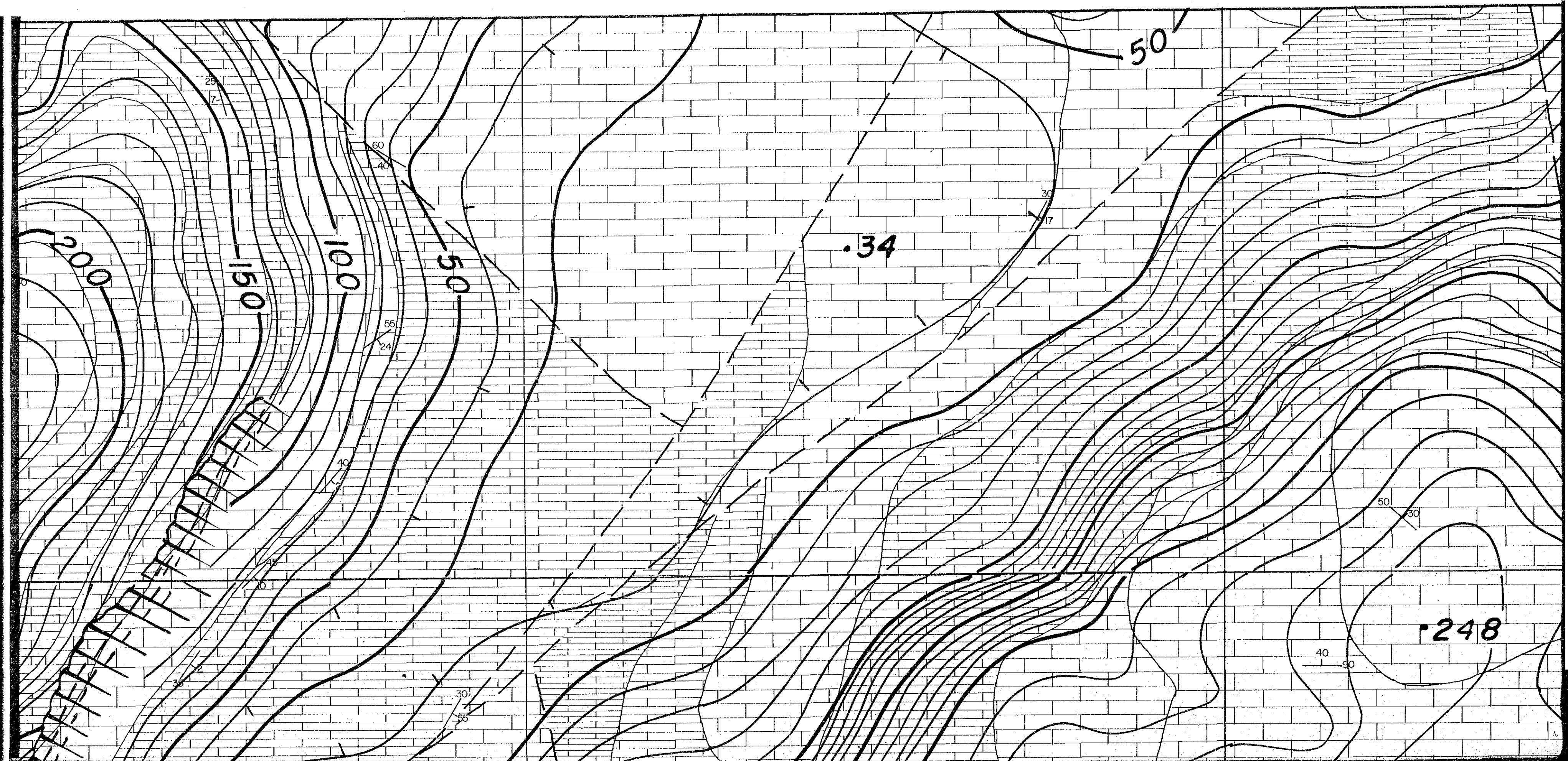
PHASE III

MARCH 1985



# SEROMAH NORTH AREA (I)

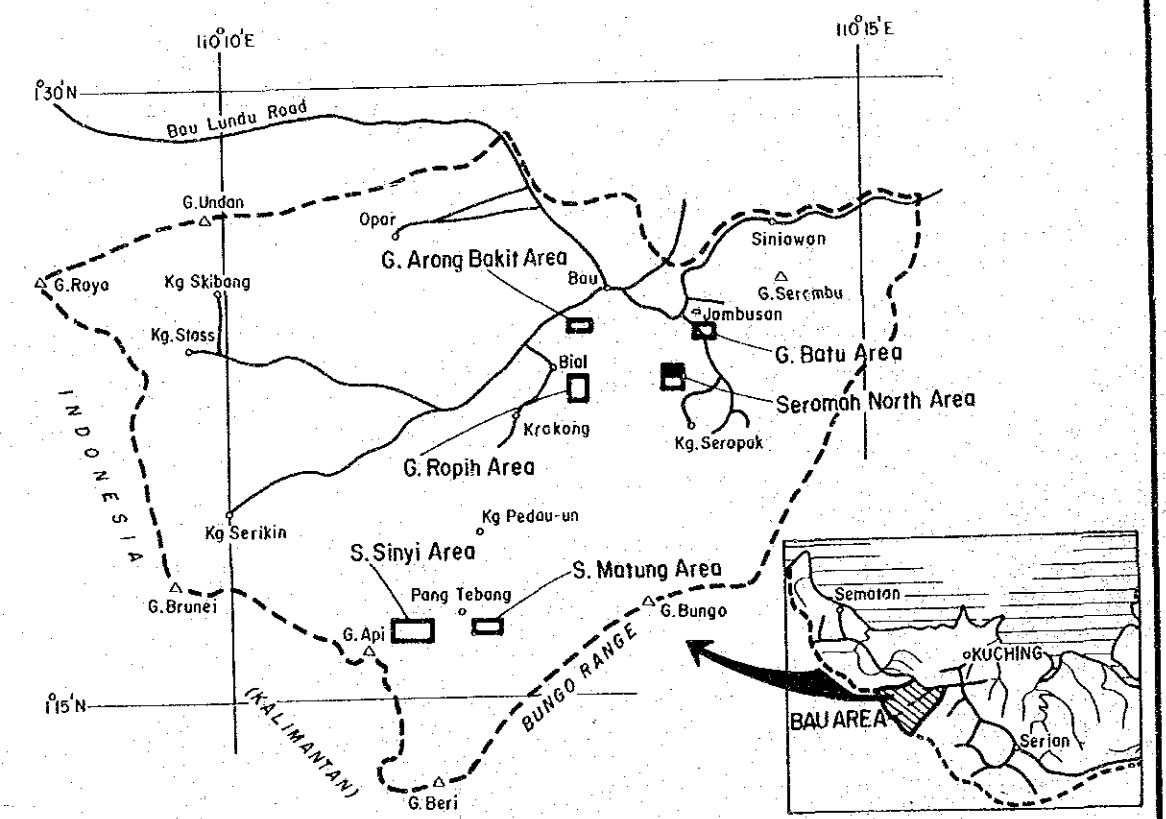




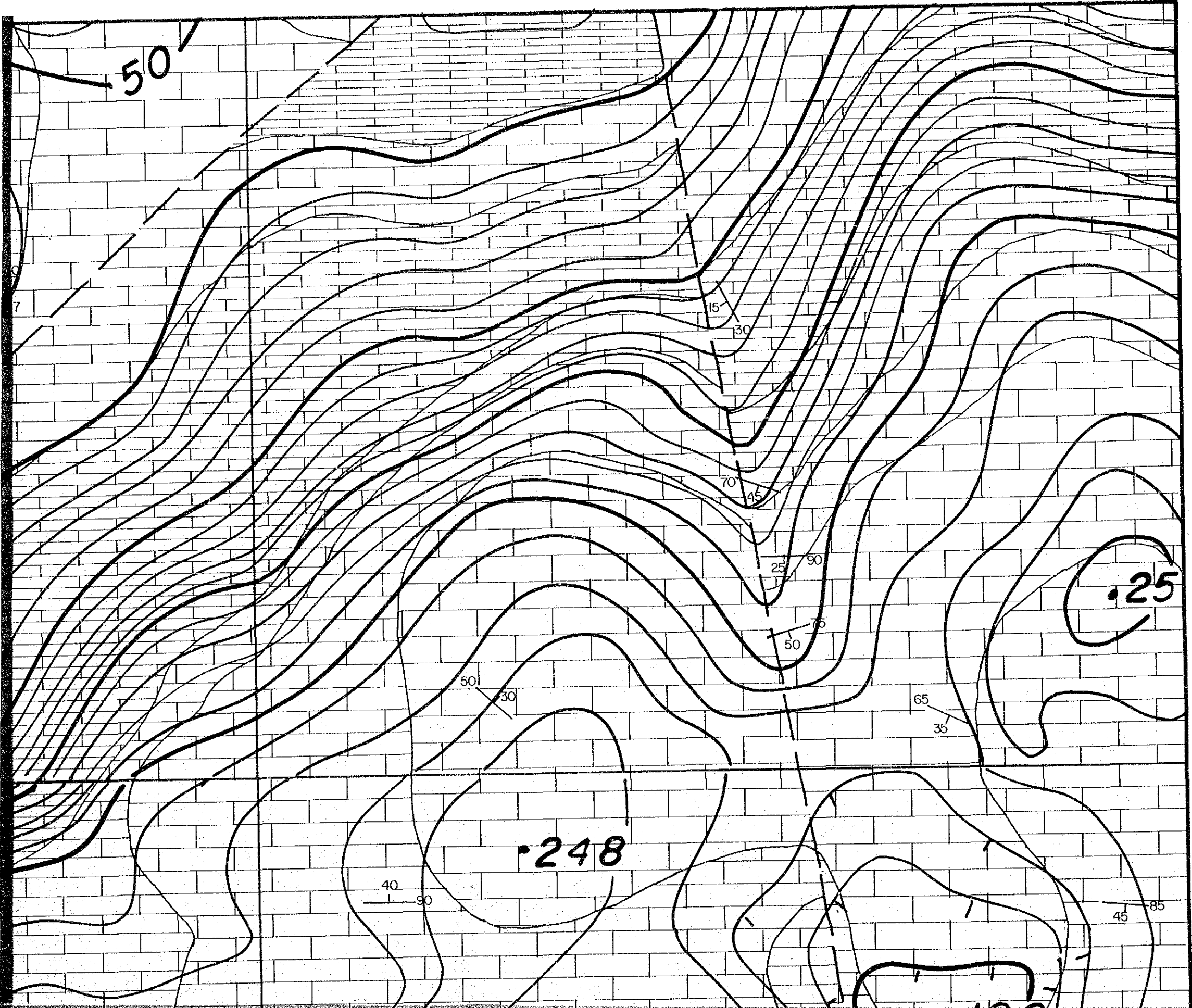
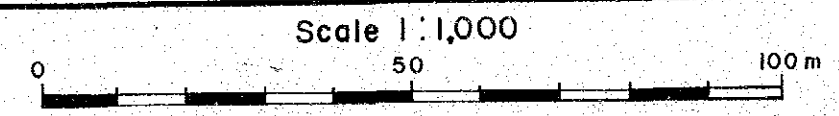
国際協力事業団  
11856  
図書資料室蔵書

Map 1-1

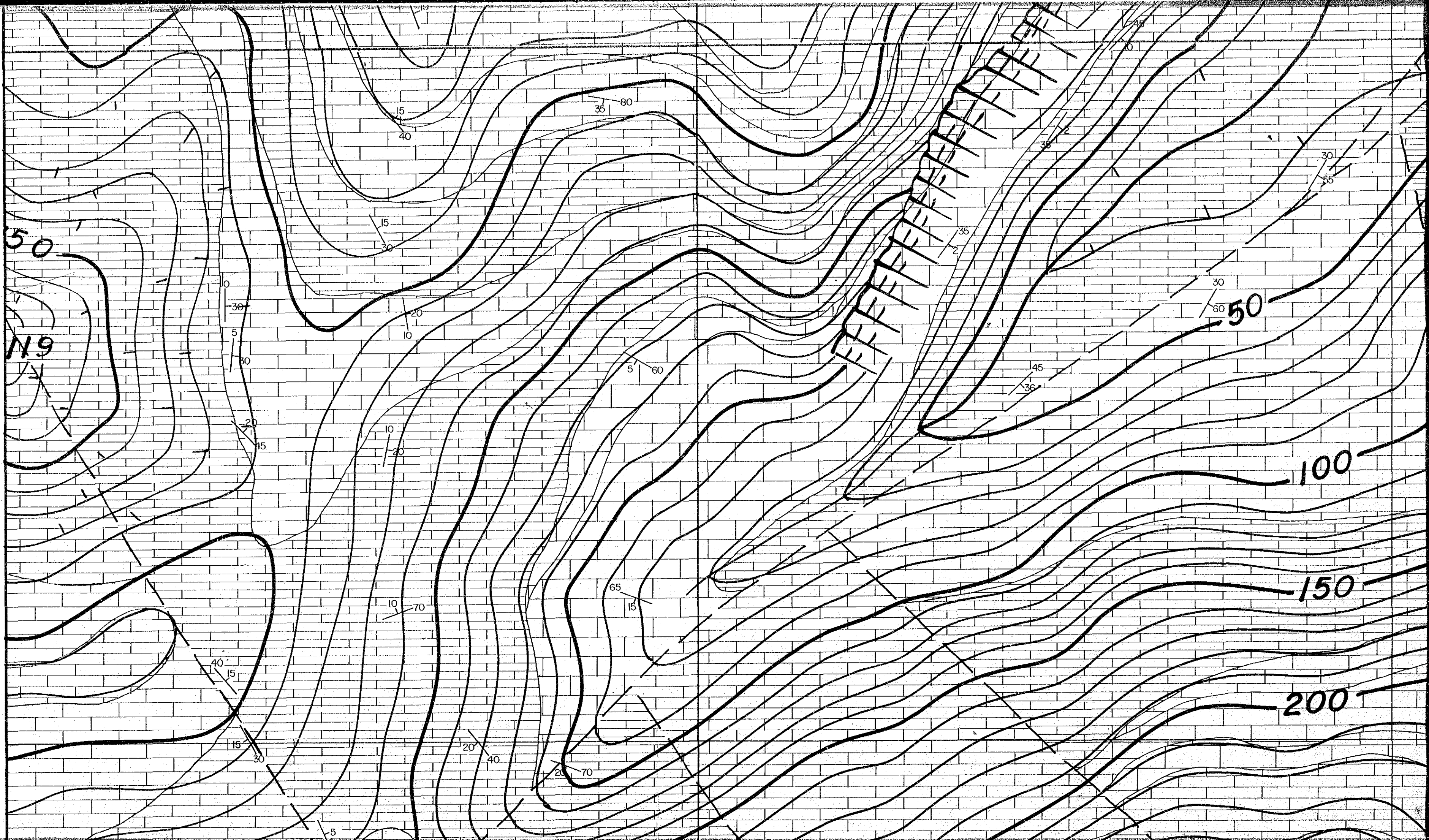
MINERAL EXPLORATION  
BAU AREA  
WEST SARAWAK, MALAYSIA  
PHASE III  
Geology of  
Seromah North Area (1)

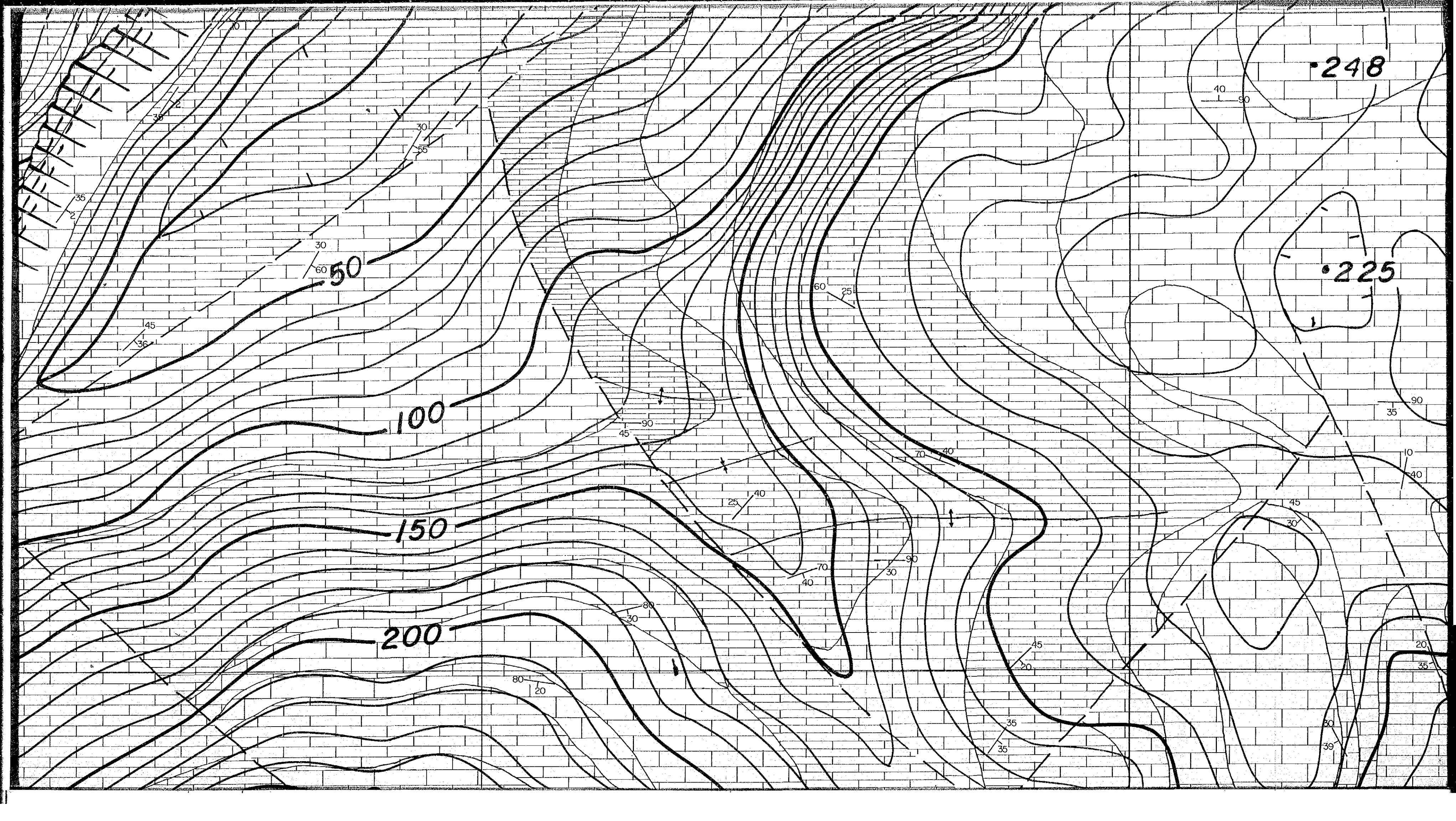


JAPAN INTERNATIONAL COOPERATION AGENCY  
METAL MINING AGENCY OF JAPAN  
GEOLOGICAL SURVEY OF MALAYSIA





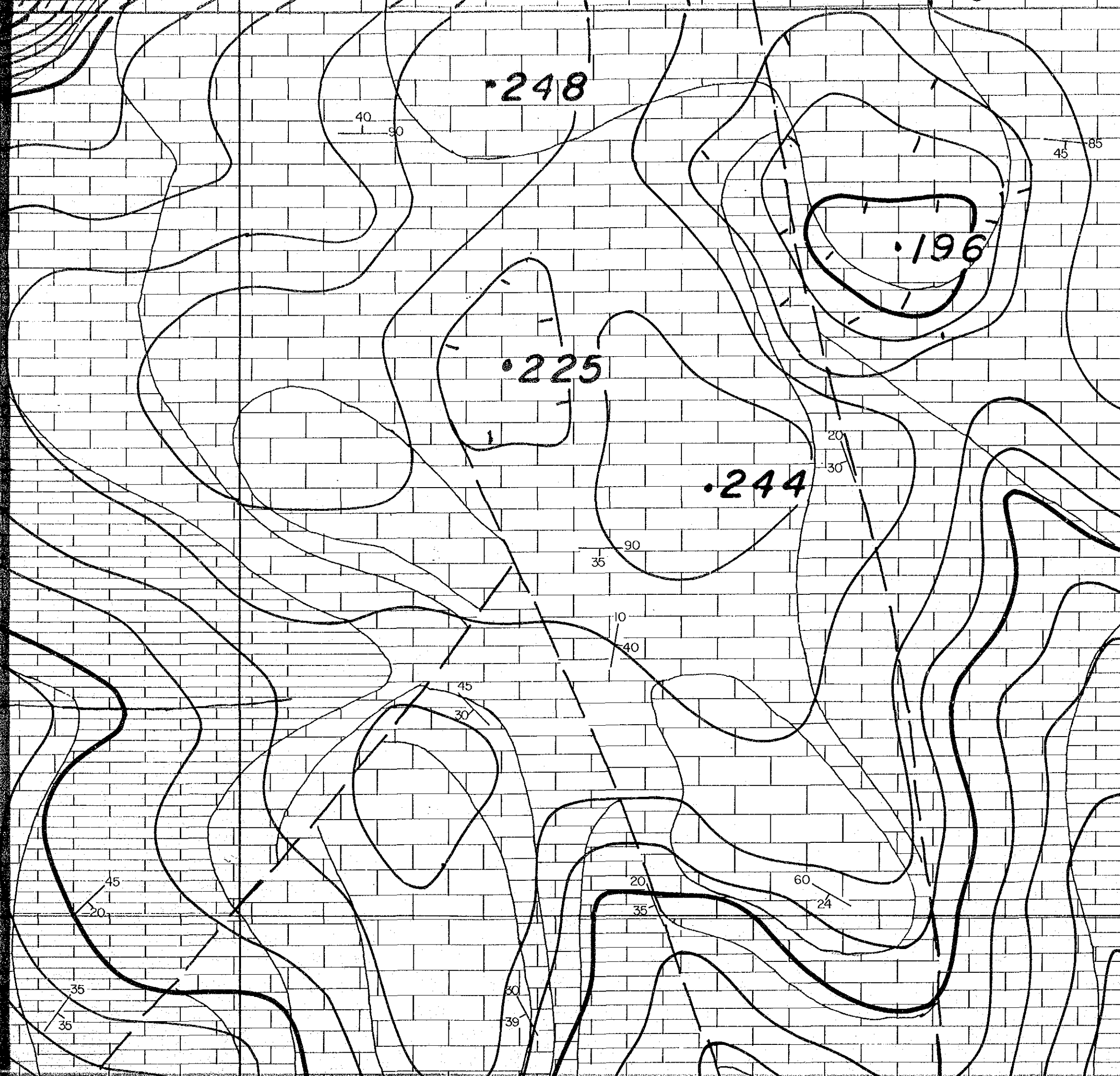
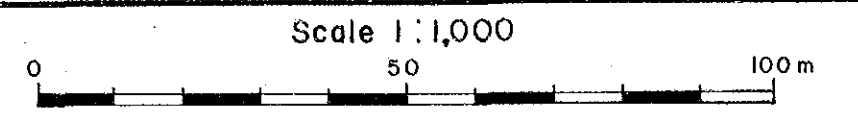






NI052.50

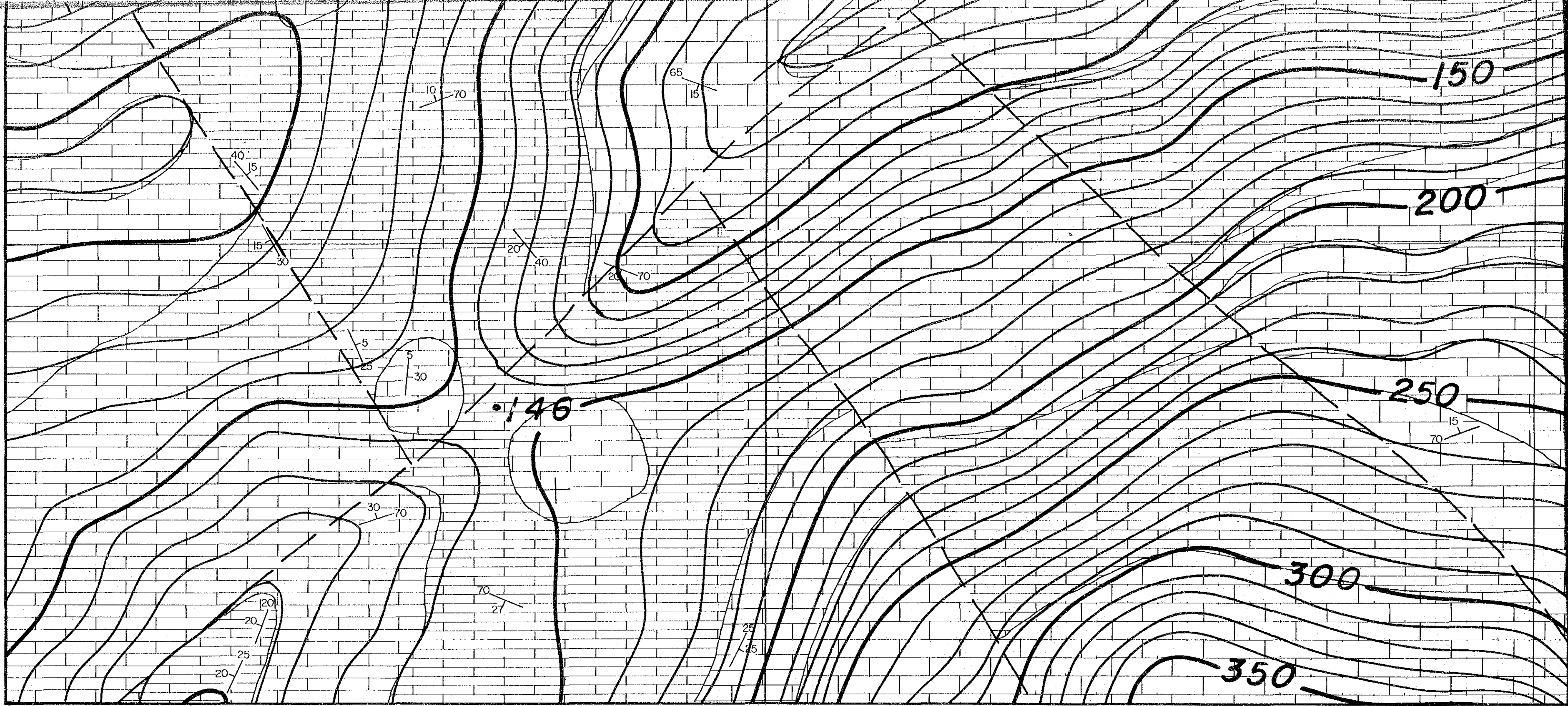
JAPAN INTERNATIONAL COOPERATION AGENCY  
METAL MINING AGENCY OF JAPAN  
GEOLOGICAL SURVEY OF MALAYSIA



NI052.25

LEGEND

- BAU LIMESTONE
- VII Very pale grey, pure limestone.
  - VI Pale grey, pure limestone.
  - V Light grey limestone.
  - IV Grey to brownish grey limestone.
  - III Dark grey to dark brownish grey limestone.
  - II Greyish black to brownish black limestone.
  - I Black argillaceous limestone.
- Fault

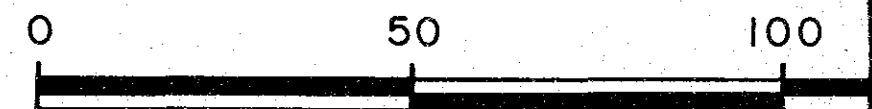


E3919.25  
SP2972 /10/84

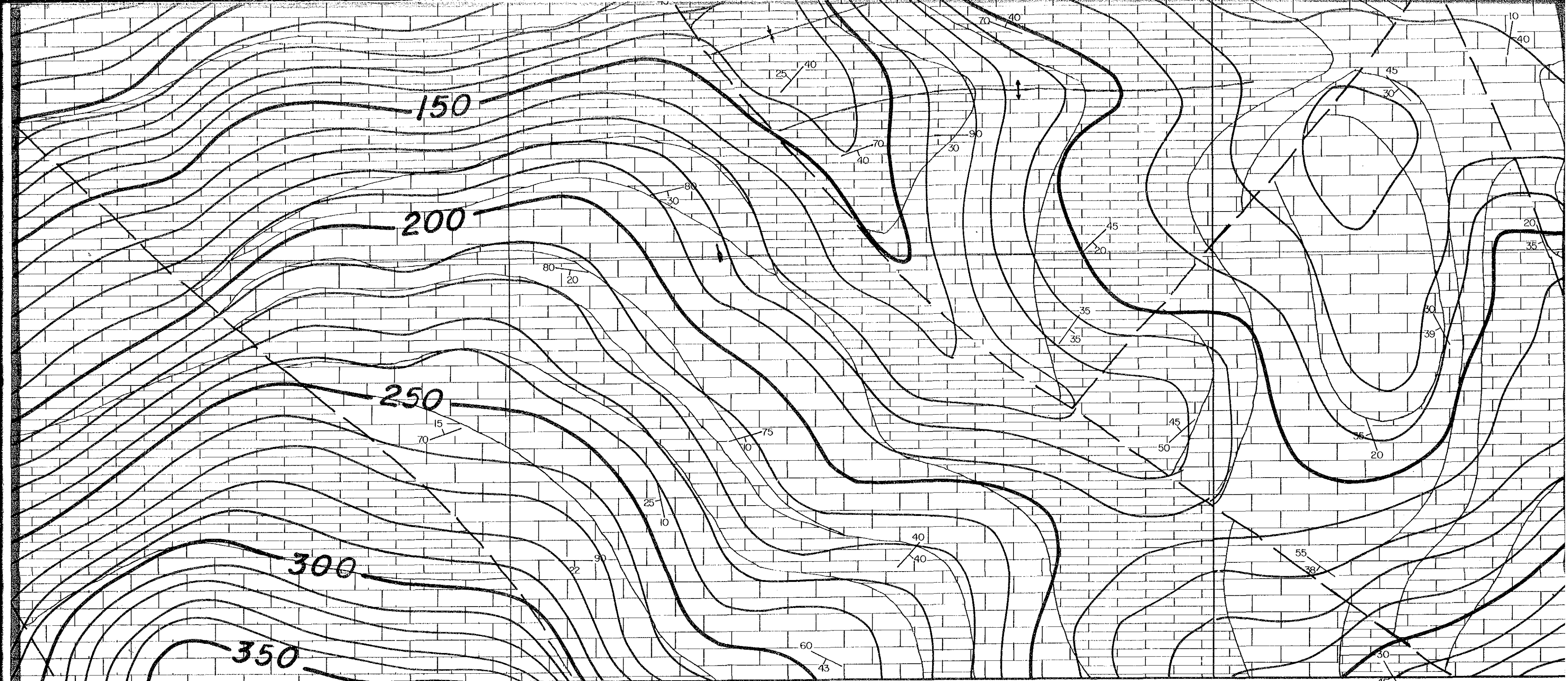
E3919.50

E3919.75

SCALE



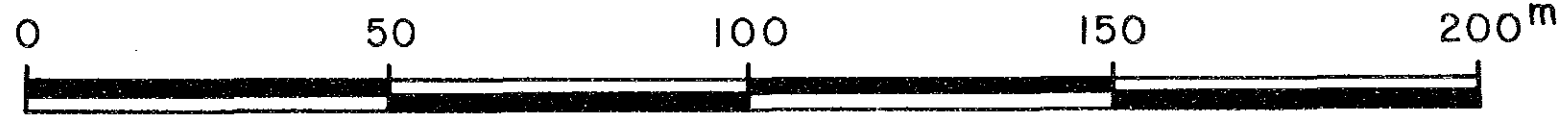


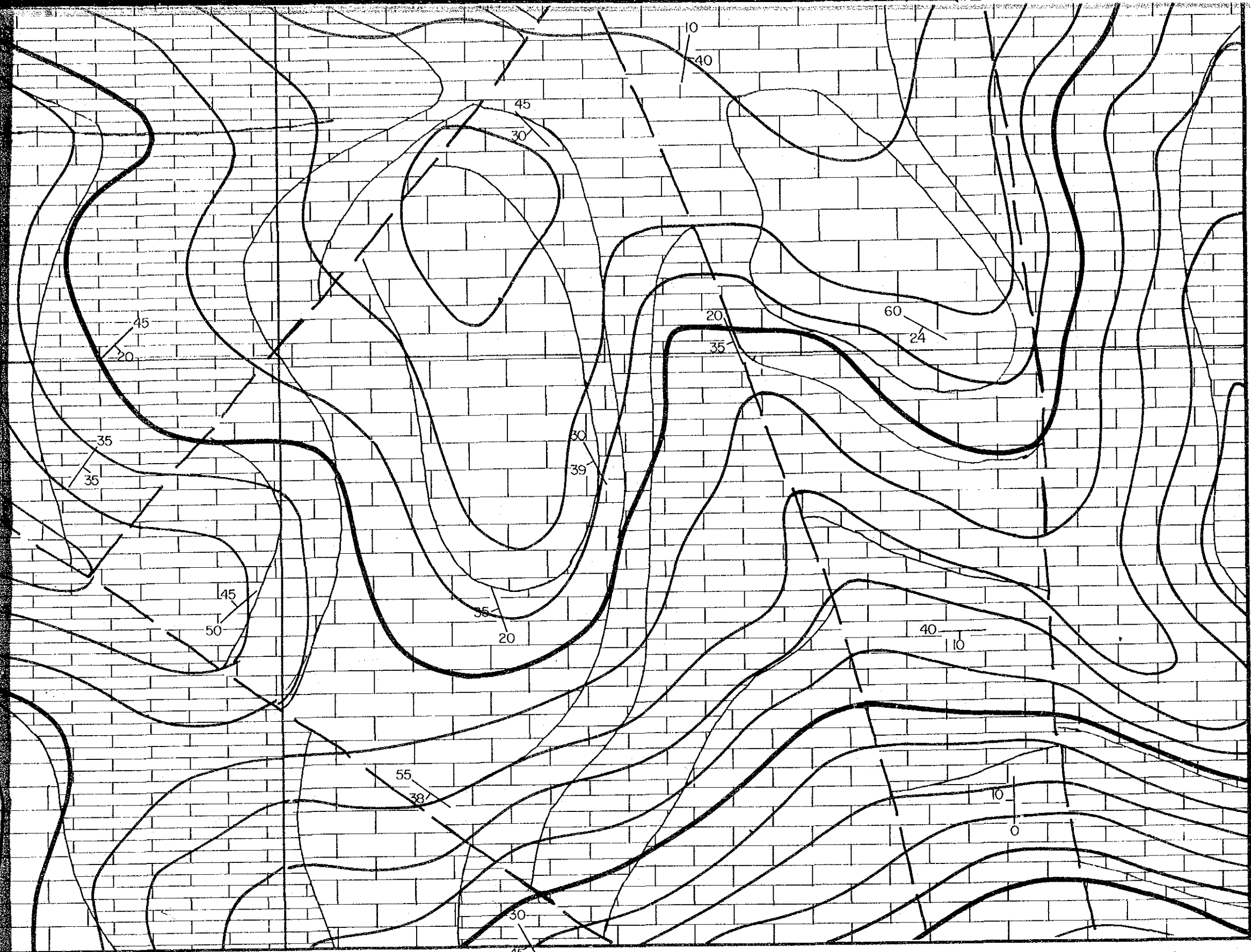


E3919.75

E3920.00

SCALE

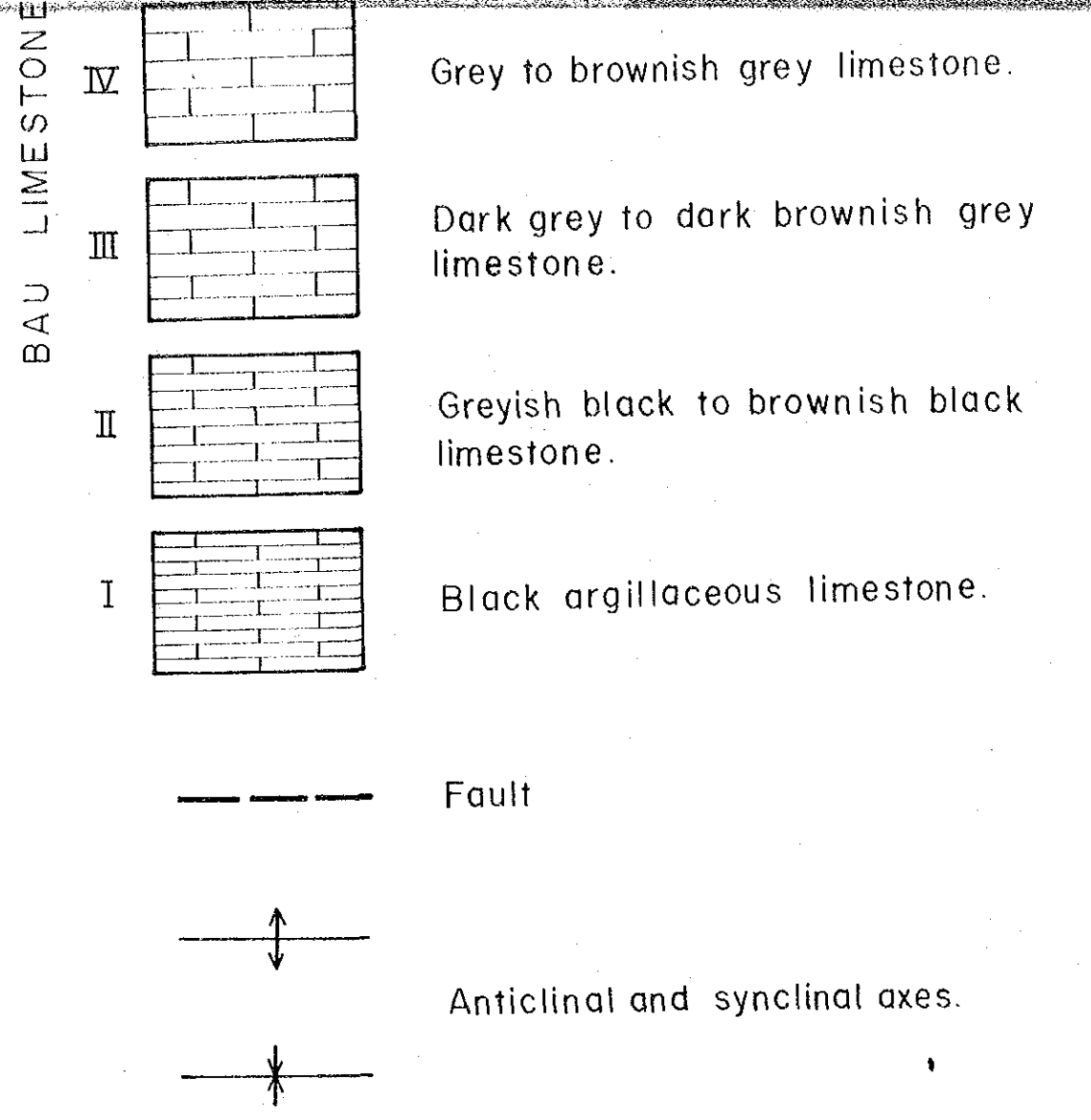




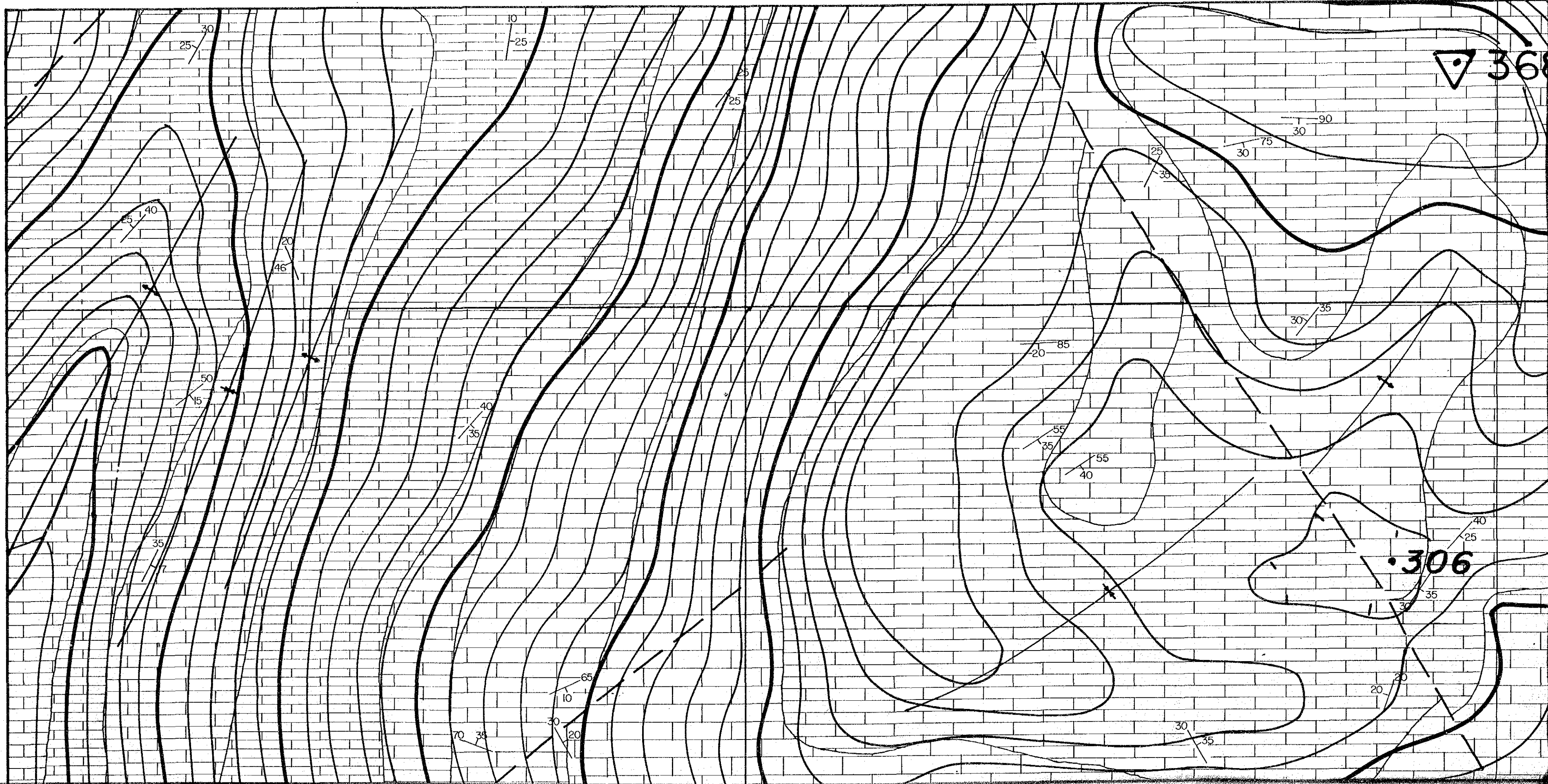
E3920.00

E3920.25

NI052.25



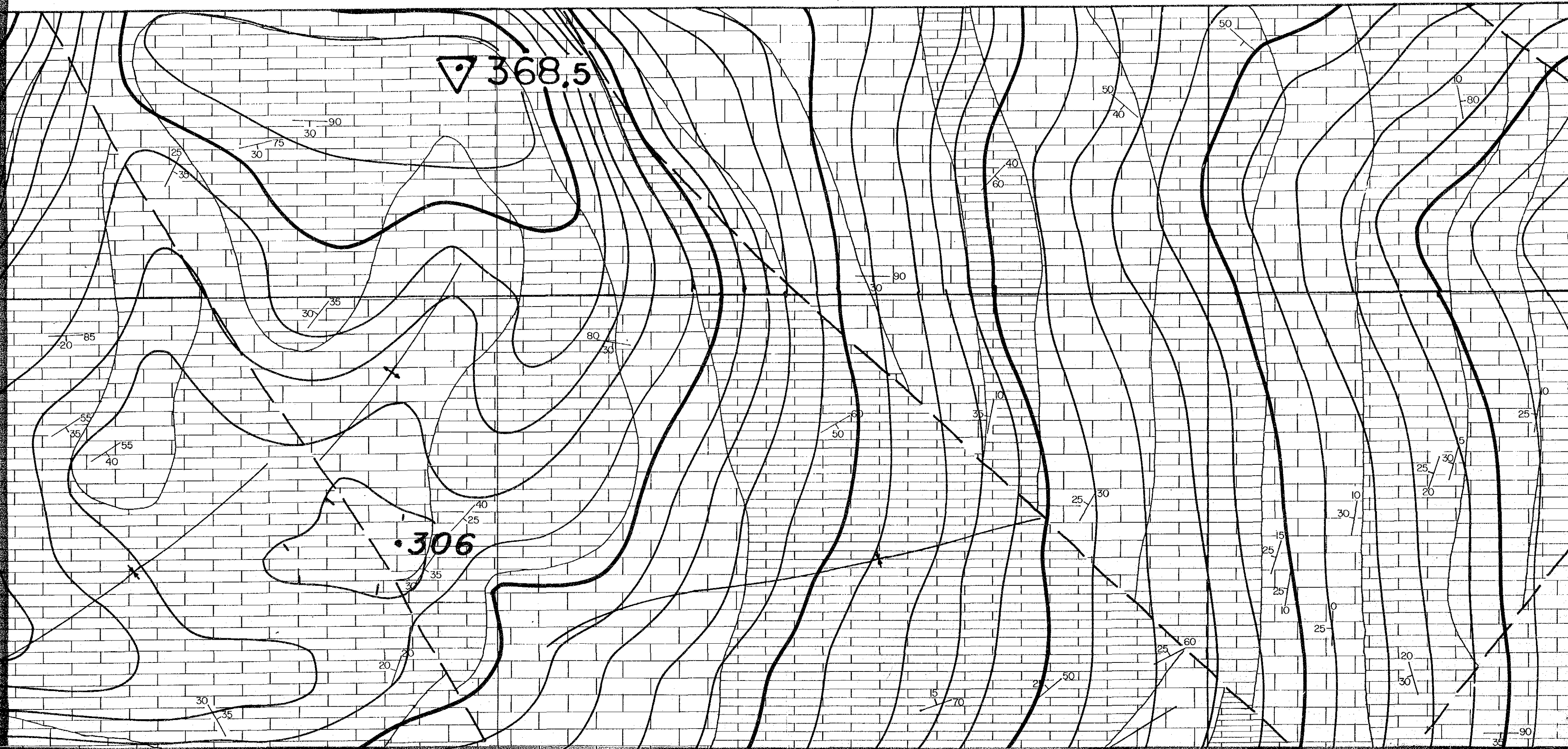
# SEROMAH NORTH AREA (2)





368.5

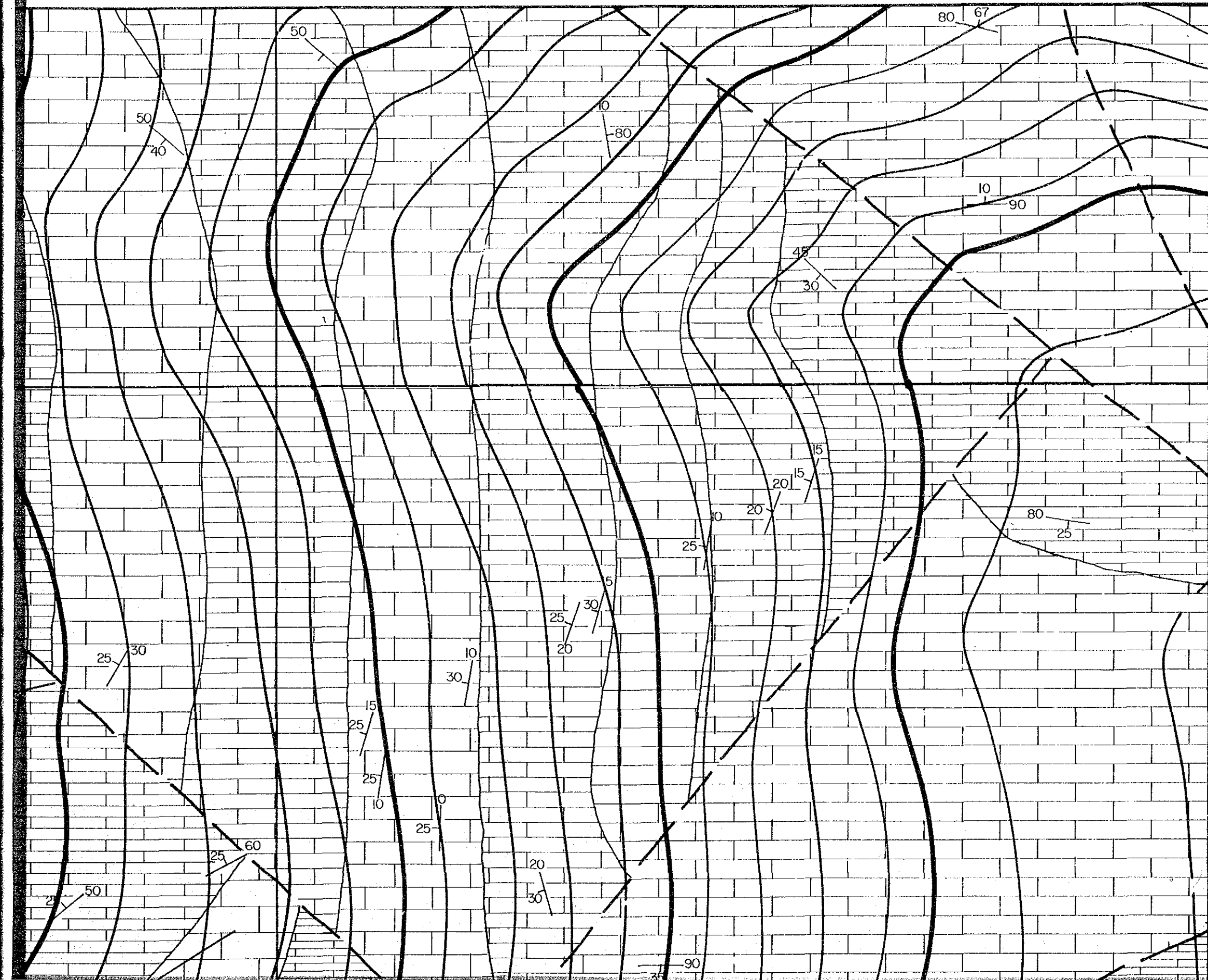
306



国際協力事業団

11856

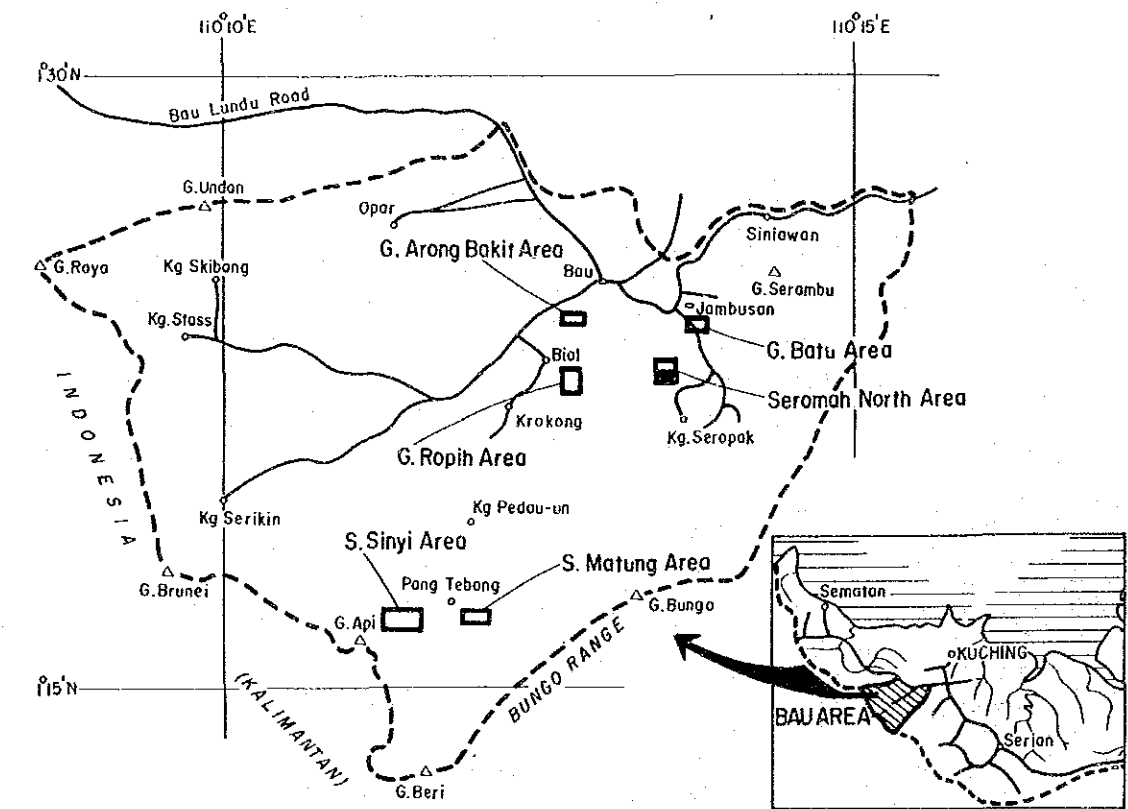
図書資料室蔵書



NI052.00

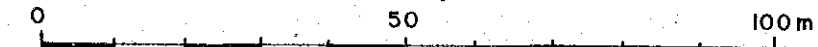
Map 1-2

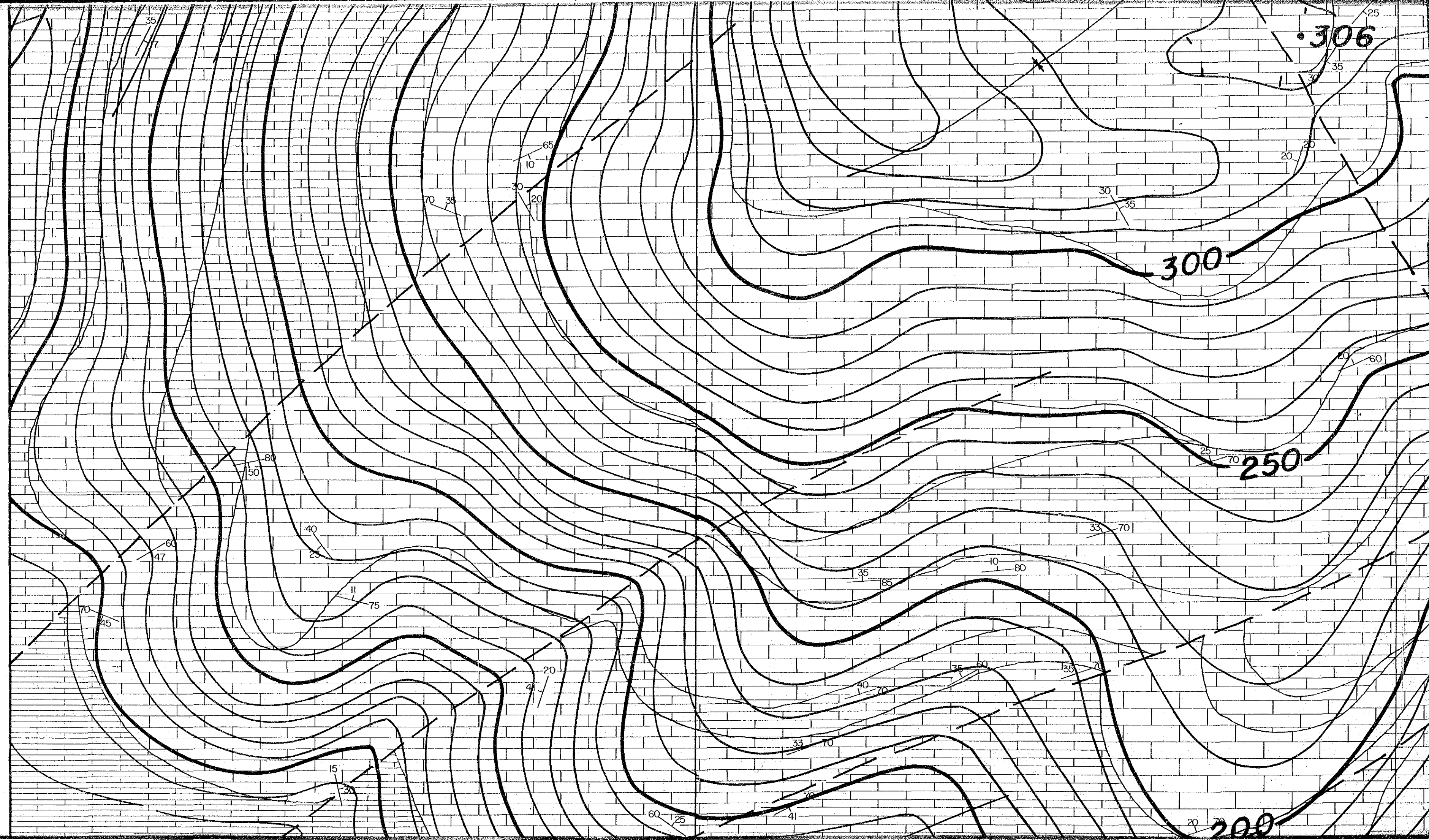
MINERAL EXPLORATION  
 BAU AREA  
 WEST SARAWAK, MALAYSIA  
 PHASE III  
 Geology of  
 Seromah North Area (2)



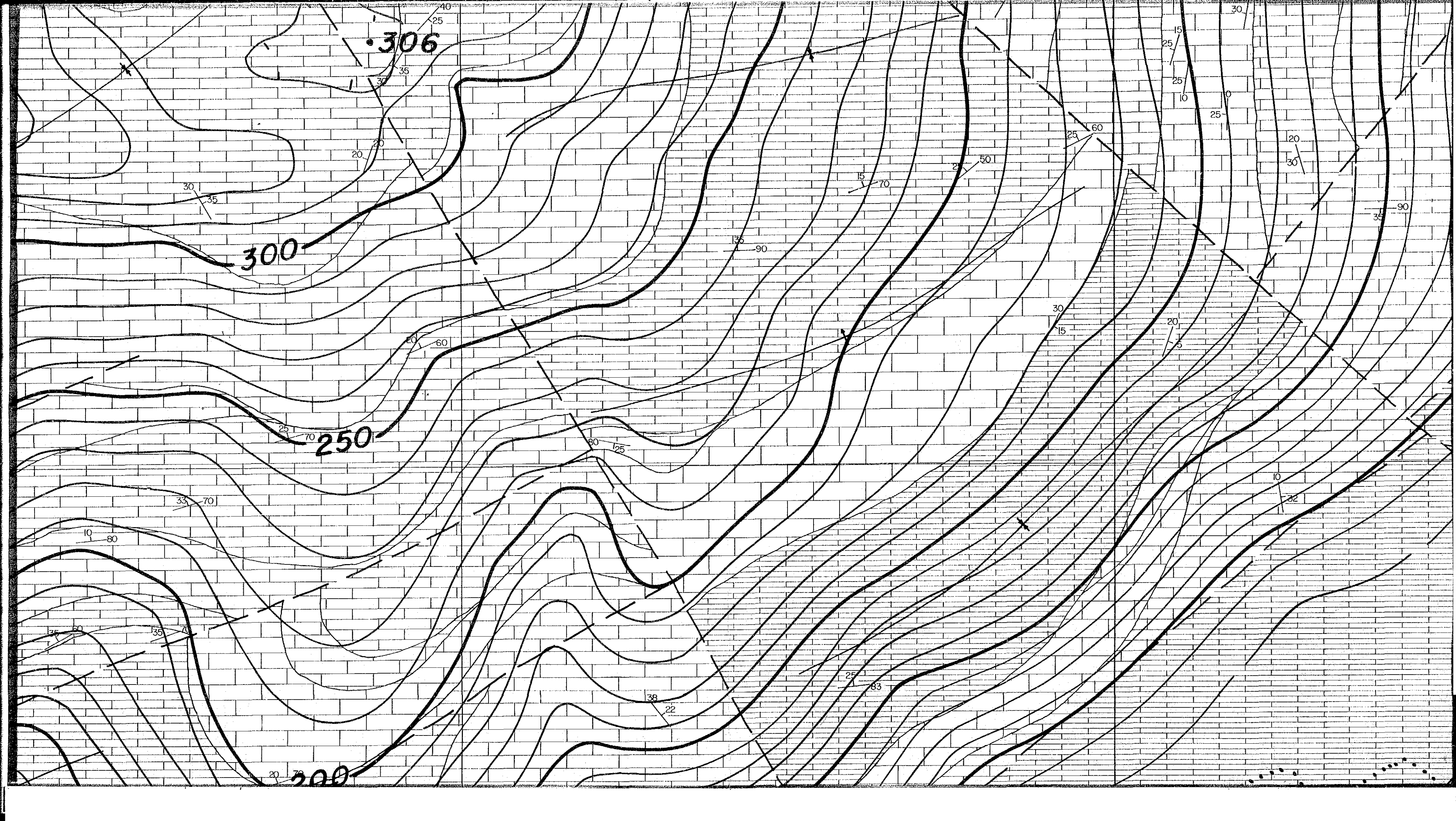
JAPAN INTERNATIONAL COOPERATION AGENCY  
 METAL MINING AGENCY OF JAPAN  
 GEOLOGICAL SURVEY OF MALAYSIA

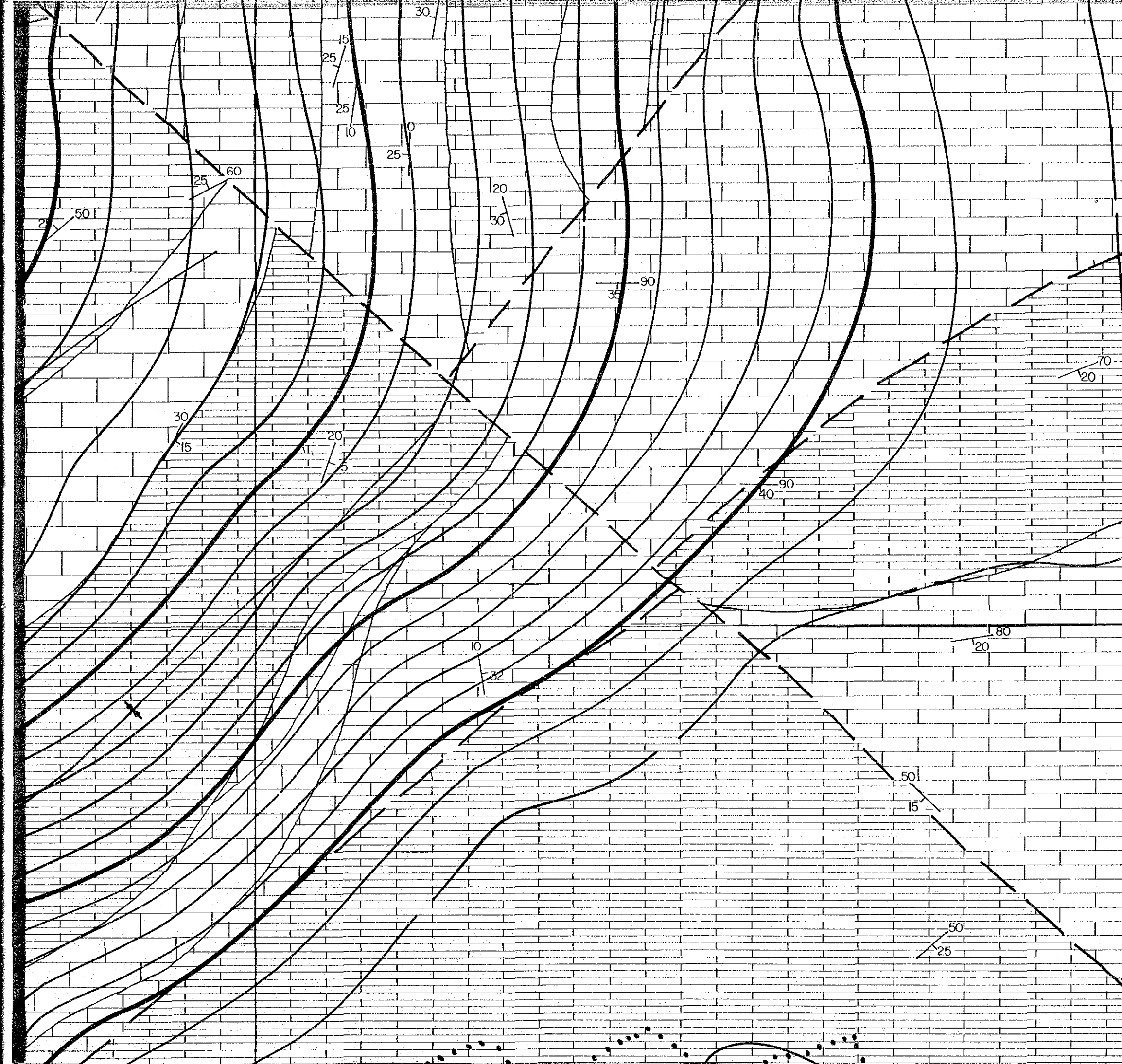
Scale 1:1,000



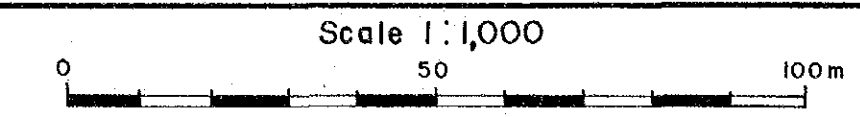






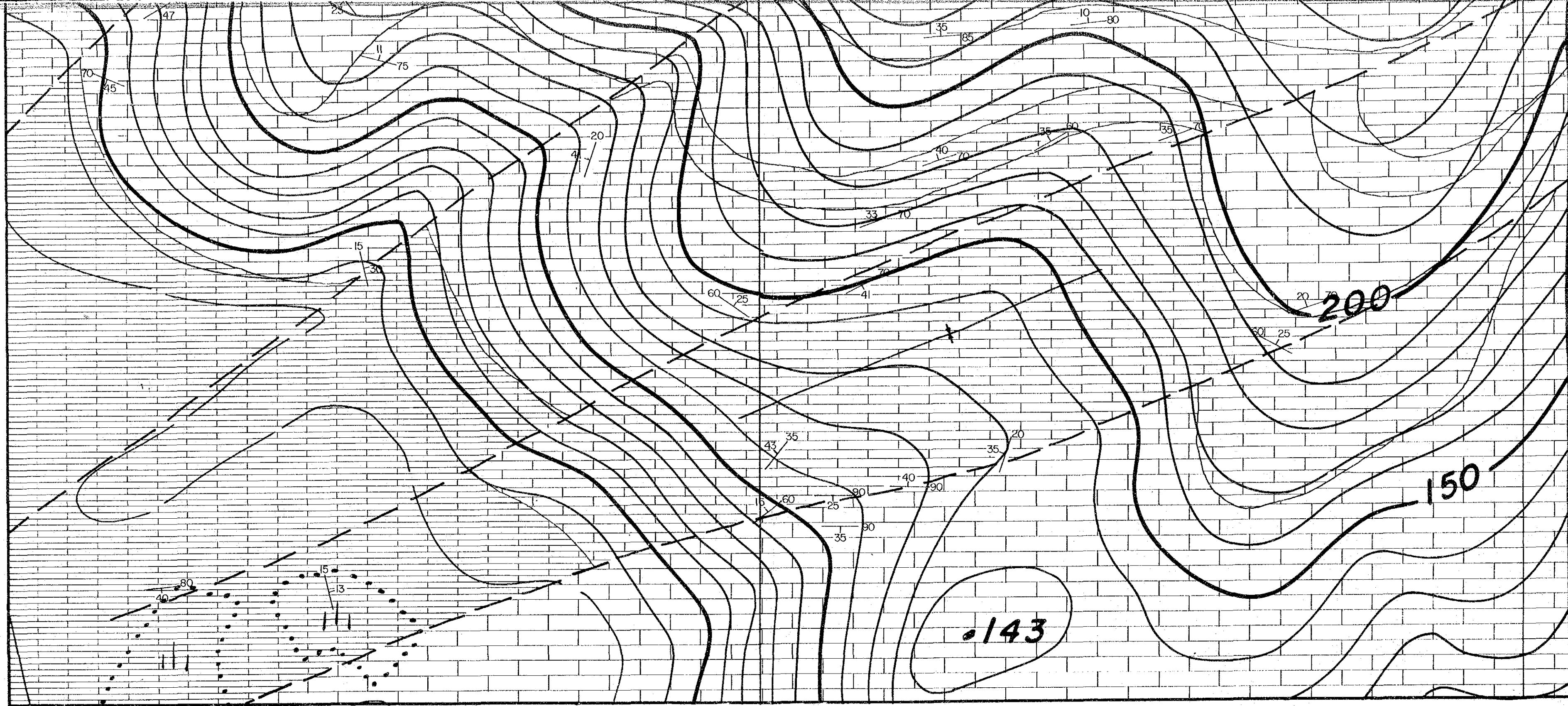


JAPAN INTERNATIONAL COOPERATION AGENCY  
 METAL MINING AGENCY OF JAPAN  
 GEOLOGICAL SURVEY OF MALAYSIA



LEGEND

- BAU LIMESTONE
- VII Very pale grey, pure limestone.
  - VI Pale grey, pure limestone.
  - V Light grey limestone.
  - IV Grey to brownish grey limestone.
  - III Dark grey to dark brownish grey limestone.
  - II Greyish black to brownish black limestone.
  - I Black argillaceous limestone.

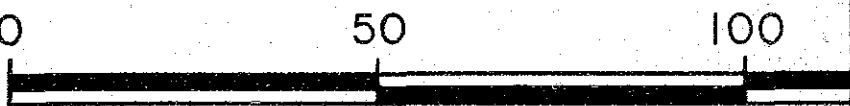


E3919.25  
SP2969/10/84

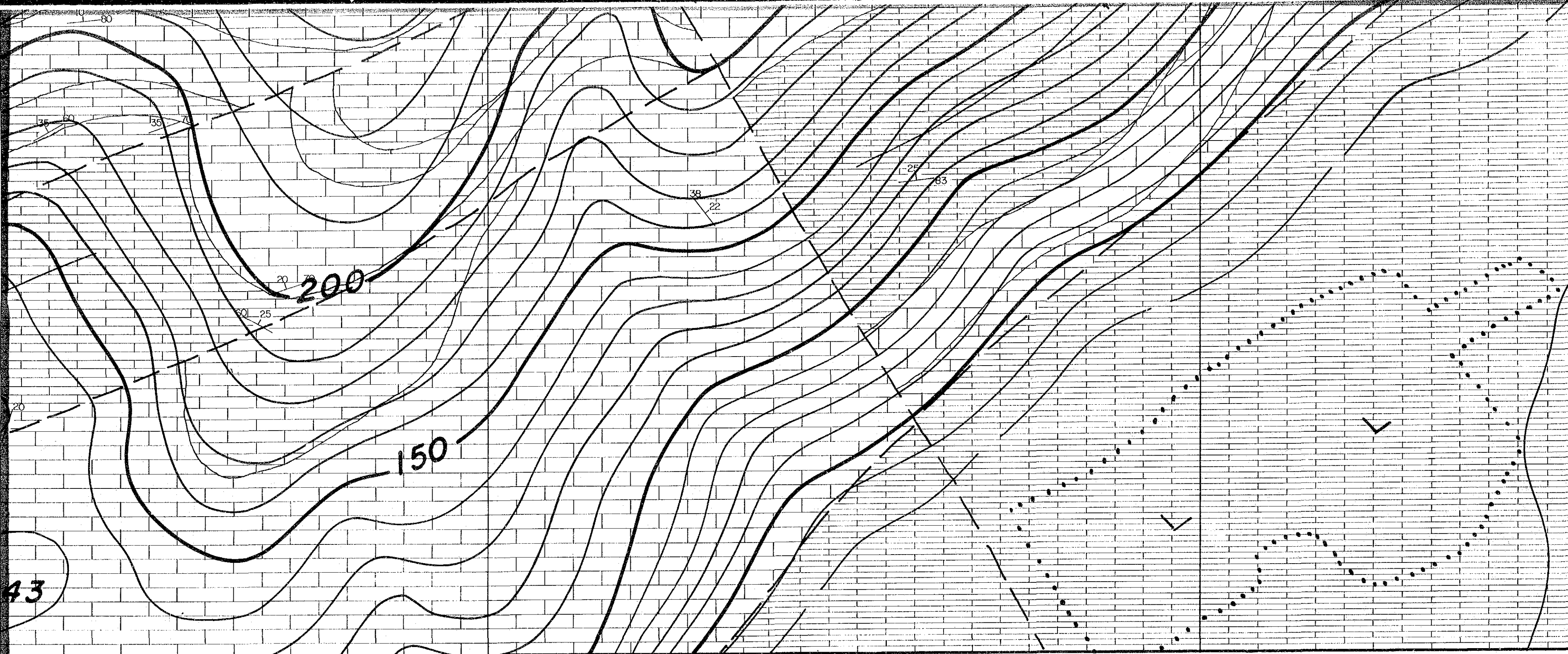
E3919.50

E3919.75

SCALE







43

E3919.75

E3920.00

SCALE

