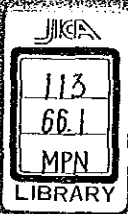


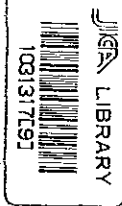
REPORT ON THE MINERAL EXPLORATION
IN SABAH, MALAYSIA

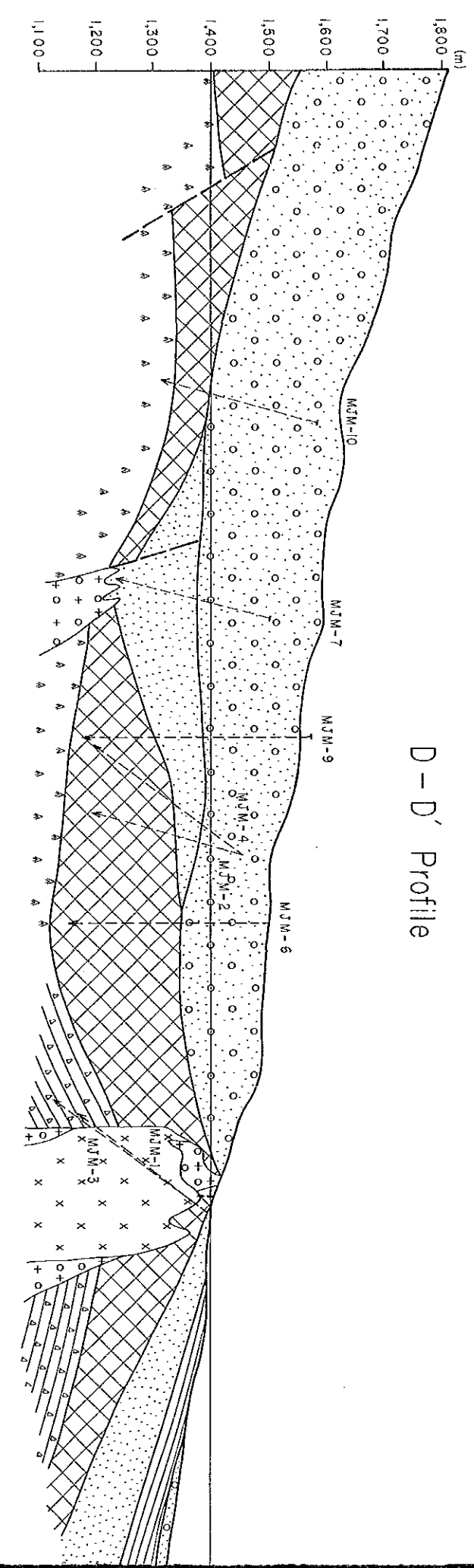
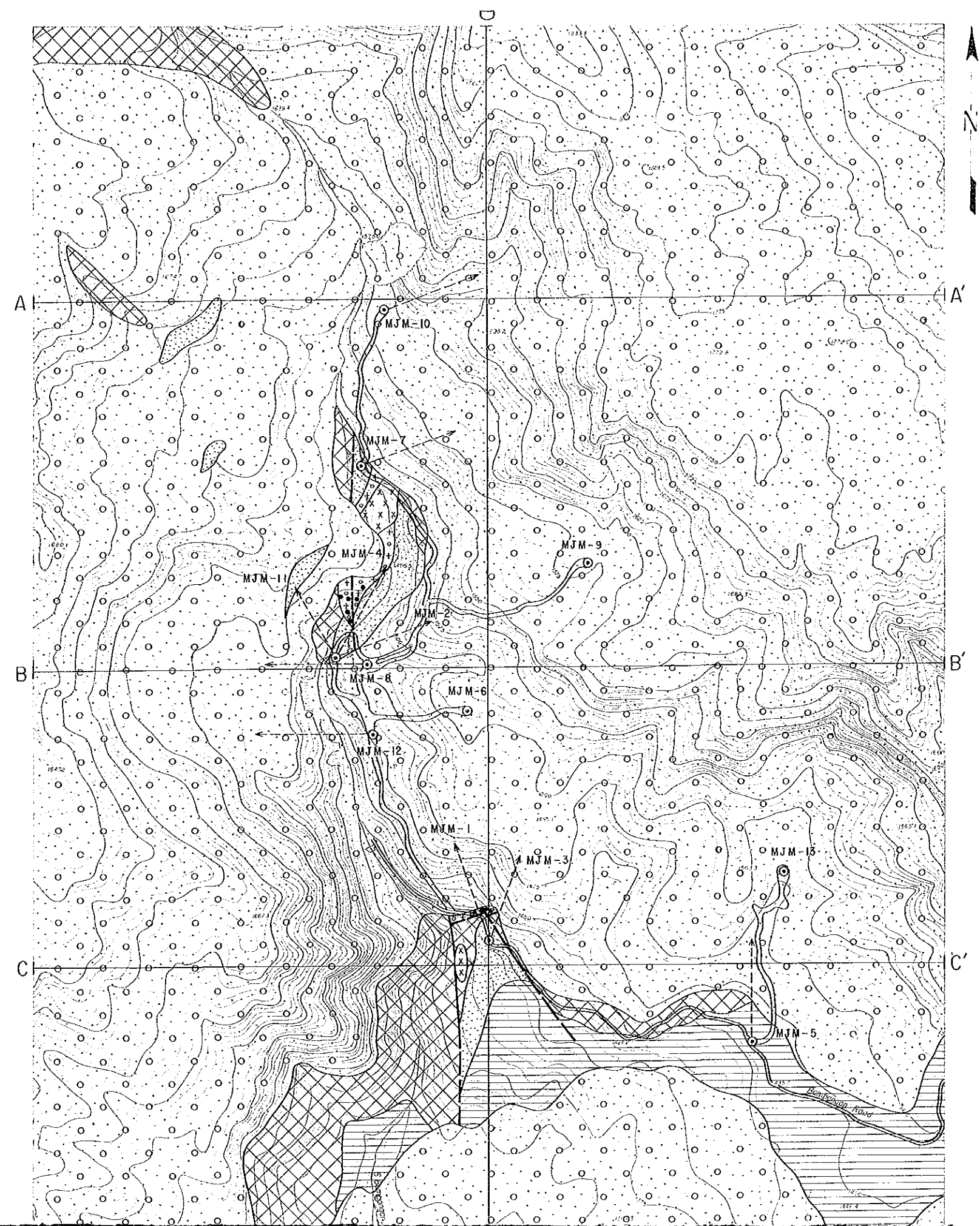
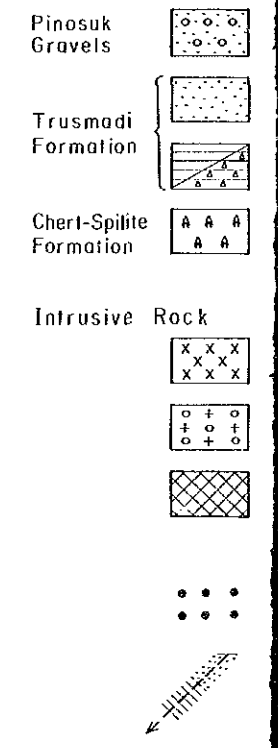
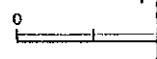
PHASE II

MARCH 1987



國際協力事業團			
貸入 年月日	87.4.22	113	
登録No.	16210	66.1	MPN



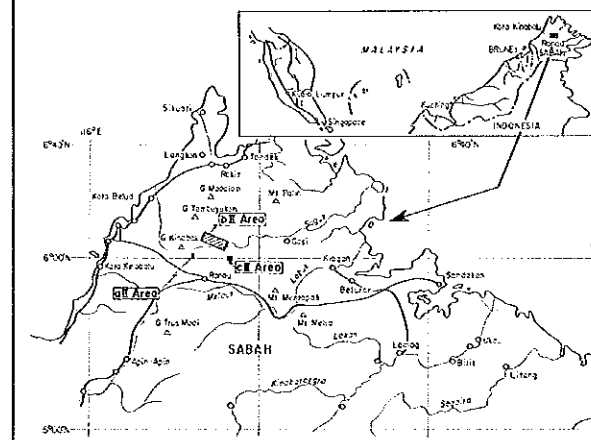


D-D' Profile

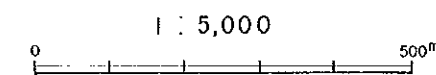
THE MINERAL EXPLORATION
IN
SABAH, MALAYSIA
PHASE II

国際協力事業
16210
調査資料集

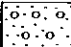

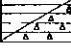
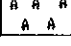
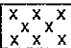
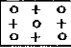



Geological Map of aII (Bambangan) Area

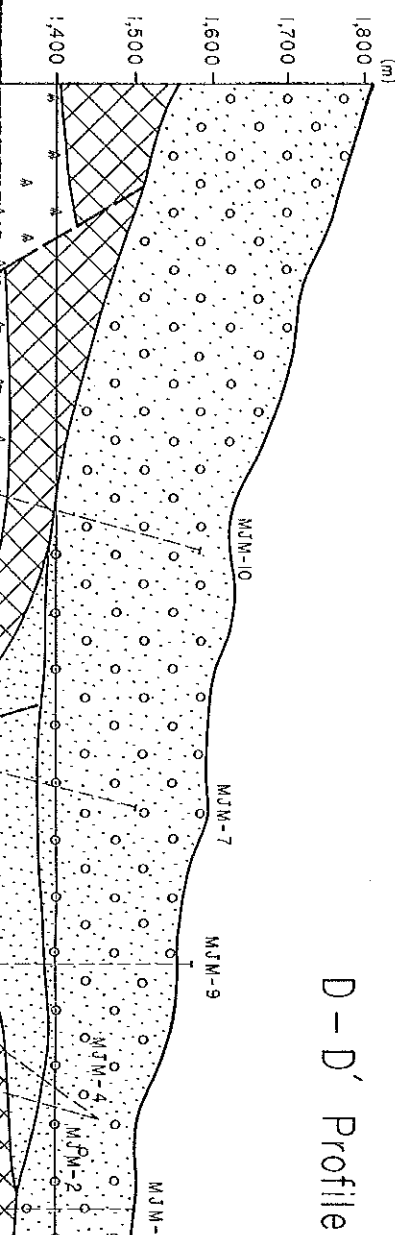


JAPAN INTERNATIONAL COOPERATION AGENCY
METAL MINING AGENCY OF JAPAN
GEOLOGICAL SURVEY OF MALAYSIA

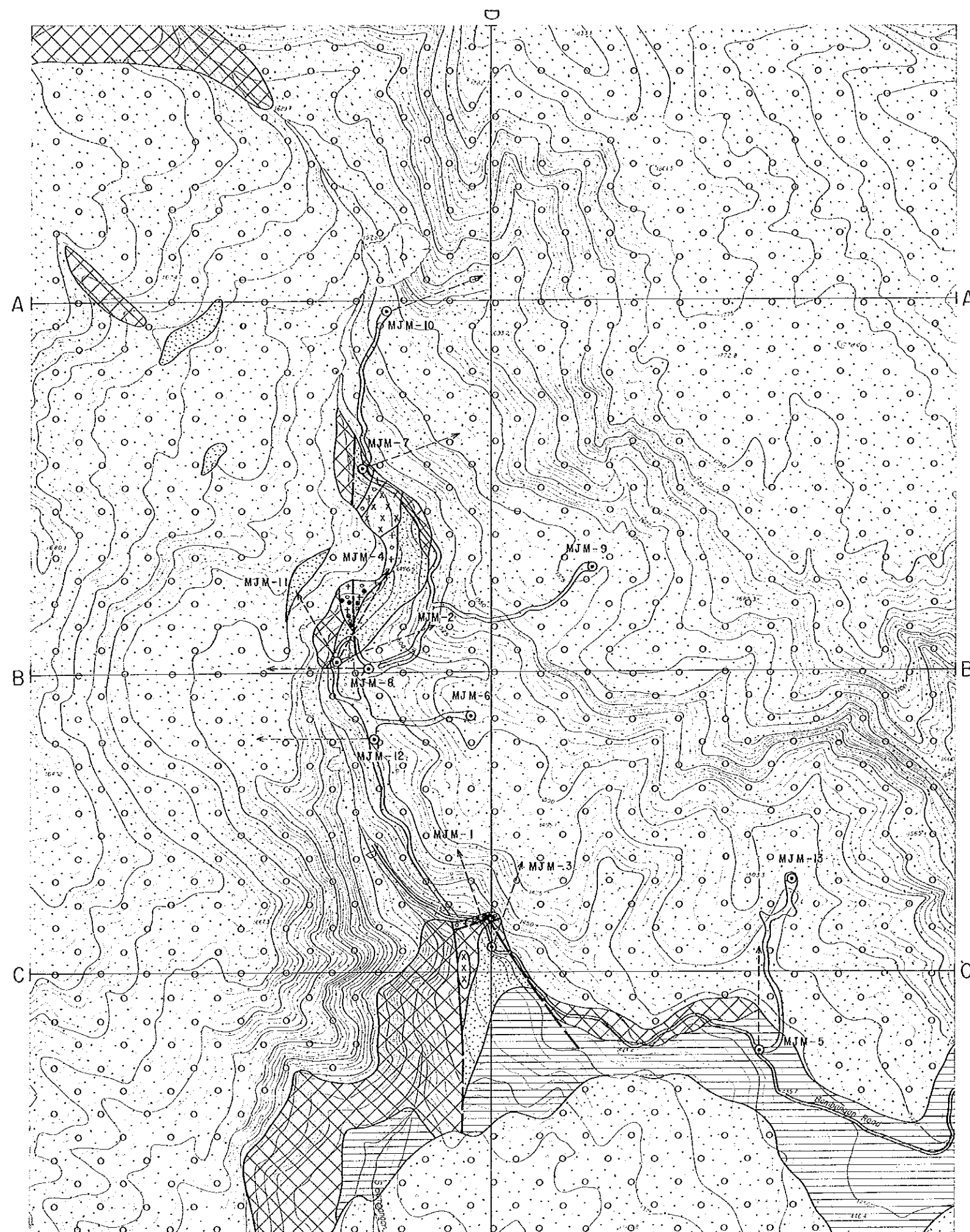


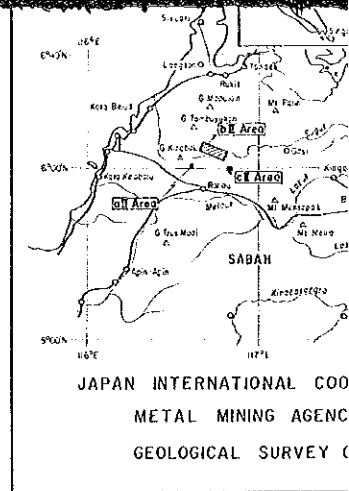
LEGEND

- Pinosuk Gravels  Gravels
- Trusmadi Formation  Sandstone (Hornfels)
-  Mudstone / Turbidite
- Chert-Spilitic Formation  Basalt Lava
- Intrusive Rock  Microdiorite
-  Adamellite porphyry
-  Peridotite
-  Mineralization
-  Drill hole with mineralization

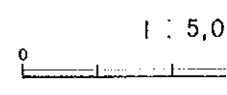


D-D' Profile



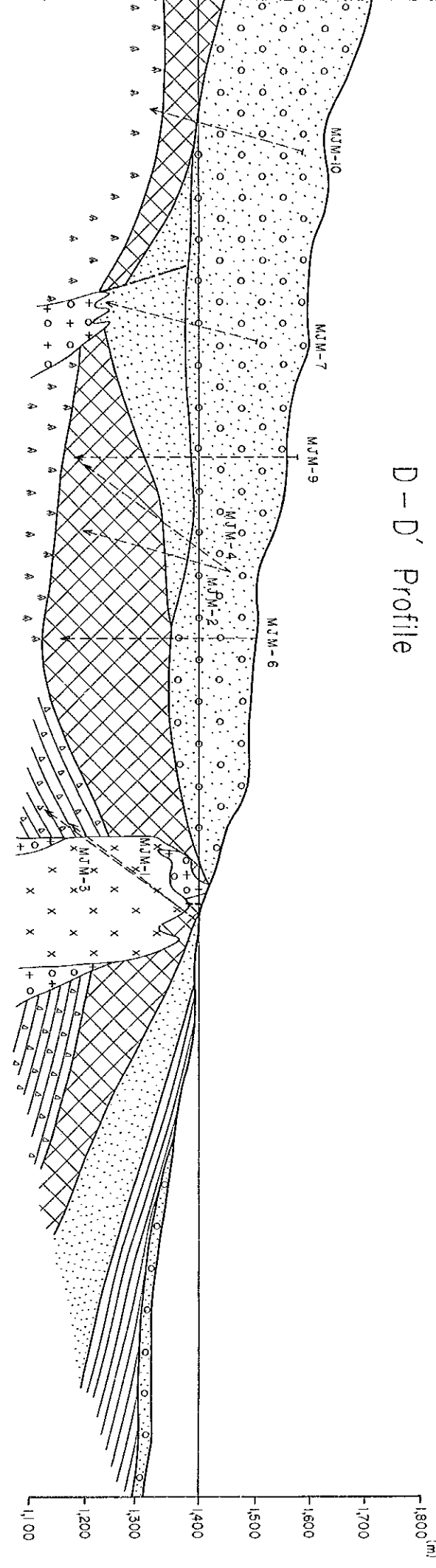
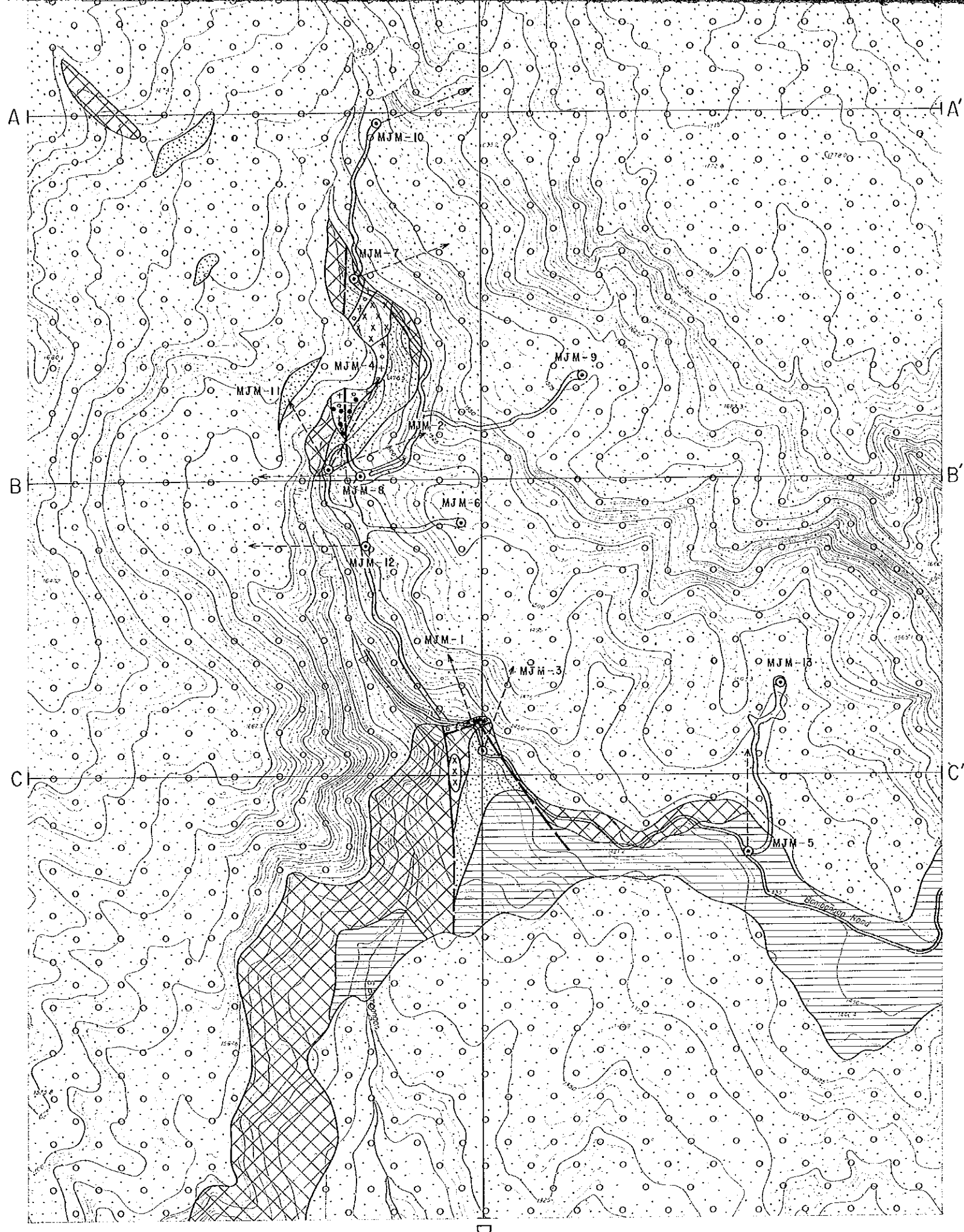


JAPAN INTERNATIONAL COOPERATION
METAL MINING AGENCY
GEOLOGICAL SURVEY OF JAPAN

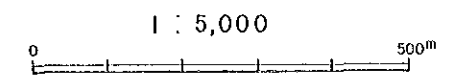
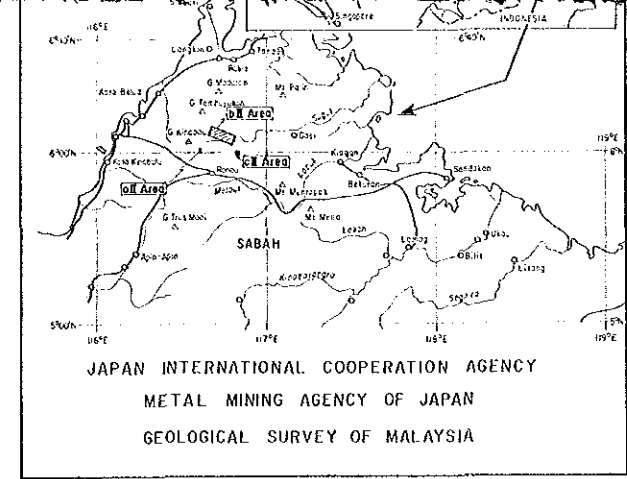


LEGEND

- Pinosuk Gravels Gravels
- Trusmi Formation Sandstone
- Trusmi Formation Mudstone
- Chert-Spille Formation Basalt
- Intrusive Rock Microgabbro
- Intrusive Rock Adakite
- Intrusive Rock Peridotite
- Mine Mine
- Drill hole Drill hole with

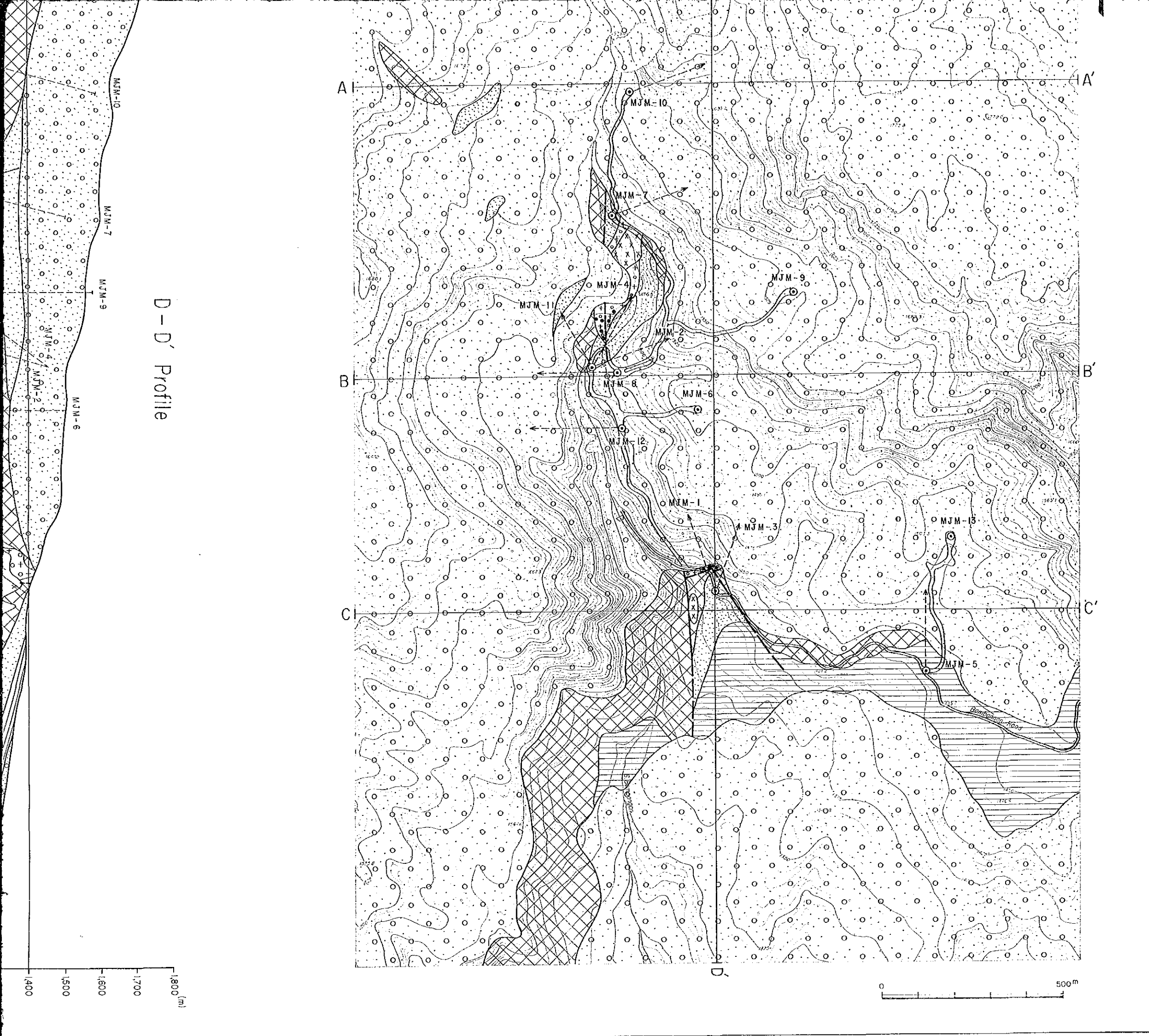


D-D' Profile



LEGEND

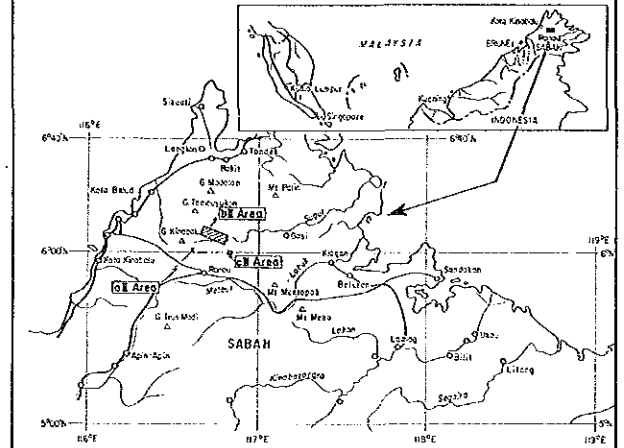
- | | | |
|--------------------------|--|--------------------------------|
| Piasuk Gravels | | Gravels |
| Trusmadi Formation | | Sandstone (Hornfels) |
| | | Mudstone / Turbidite |
| Chert-Spilitic Formation | | Basalt Lava |
| Intrusive Rock | | |
| | | Microdiorite |
| | | Adamellite porphyry |
| | | Peridotite |
| | | Mineralization |
| | | Drill hole with mineralization |



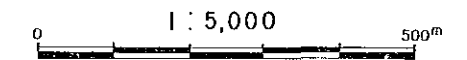
THE MINERAL EXPLORATION
IN
SABAH, MALAYSIA
PHASE I

国際協力機構
16210
国際資源調査隊

Geological Profile of aII (Bambangan) Area

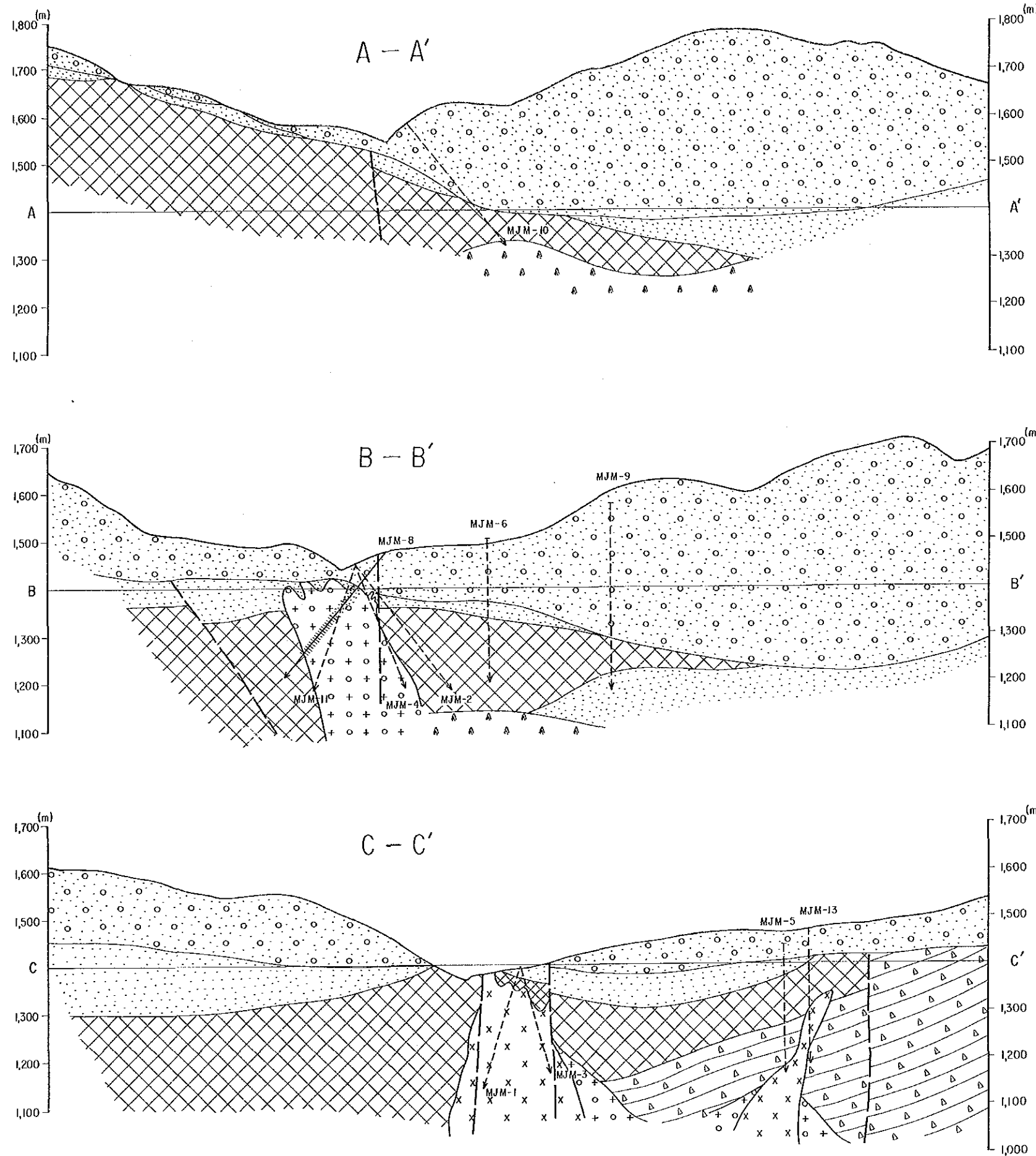


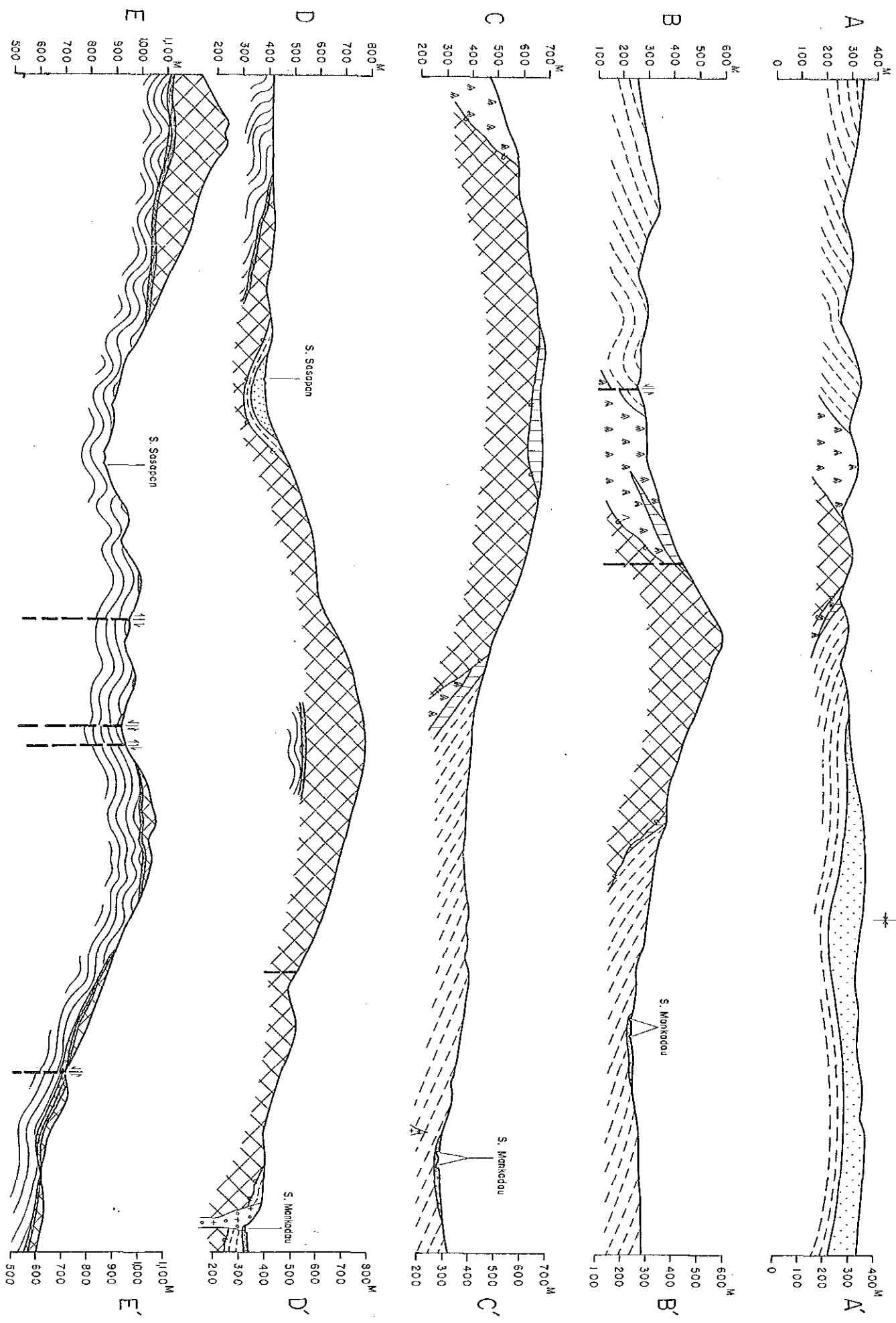
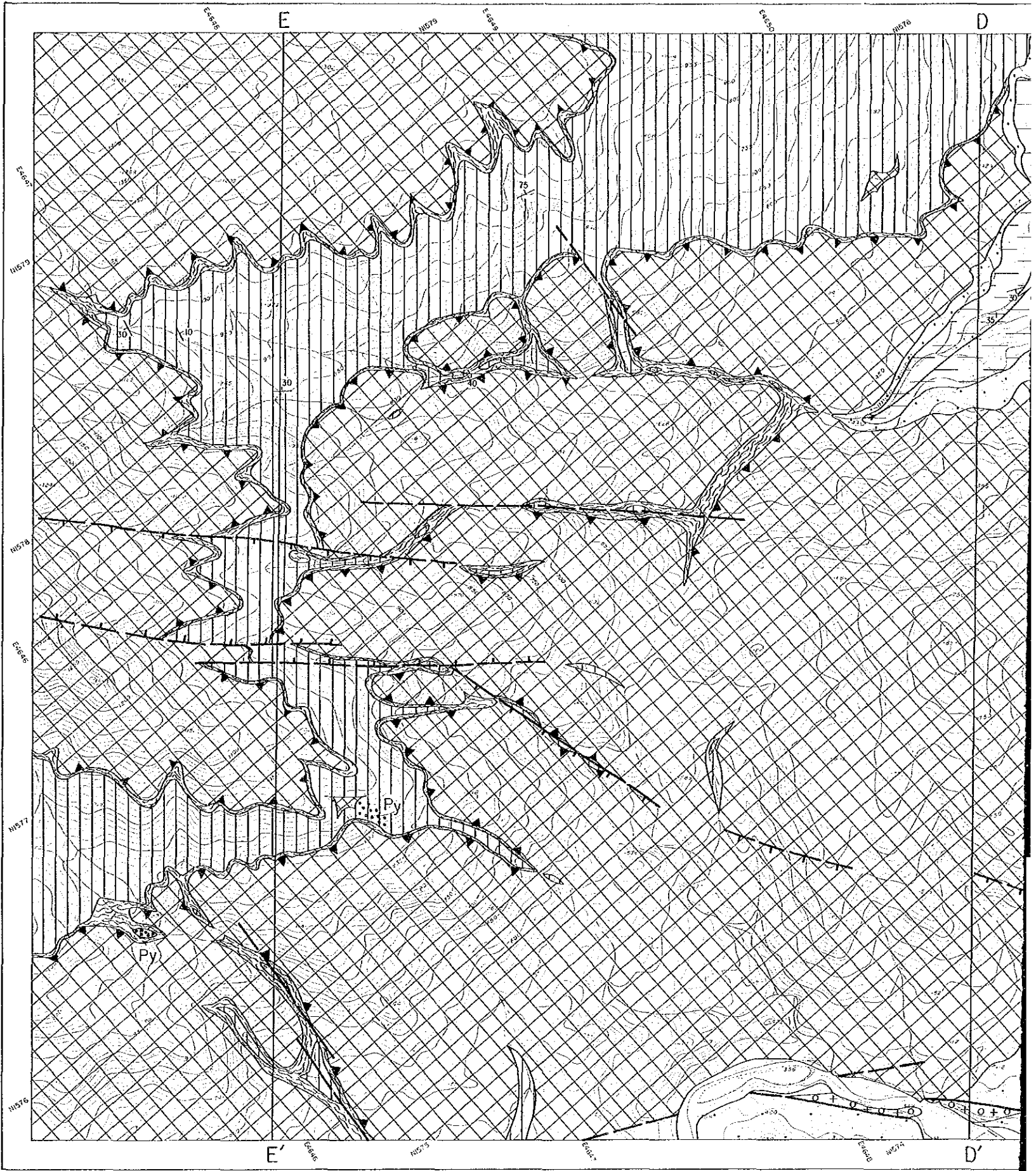
JAPAN INTERNATIONAL COOPERATION AGENCY
METAL MINING AGENCY OF JAPAN
GEOLOGICAL SURVEY OF MALAYSIA

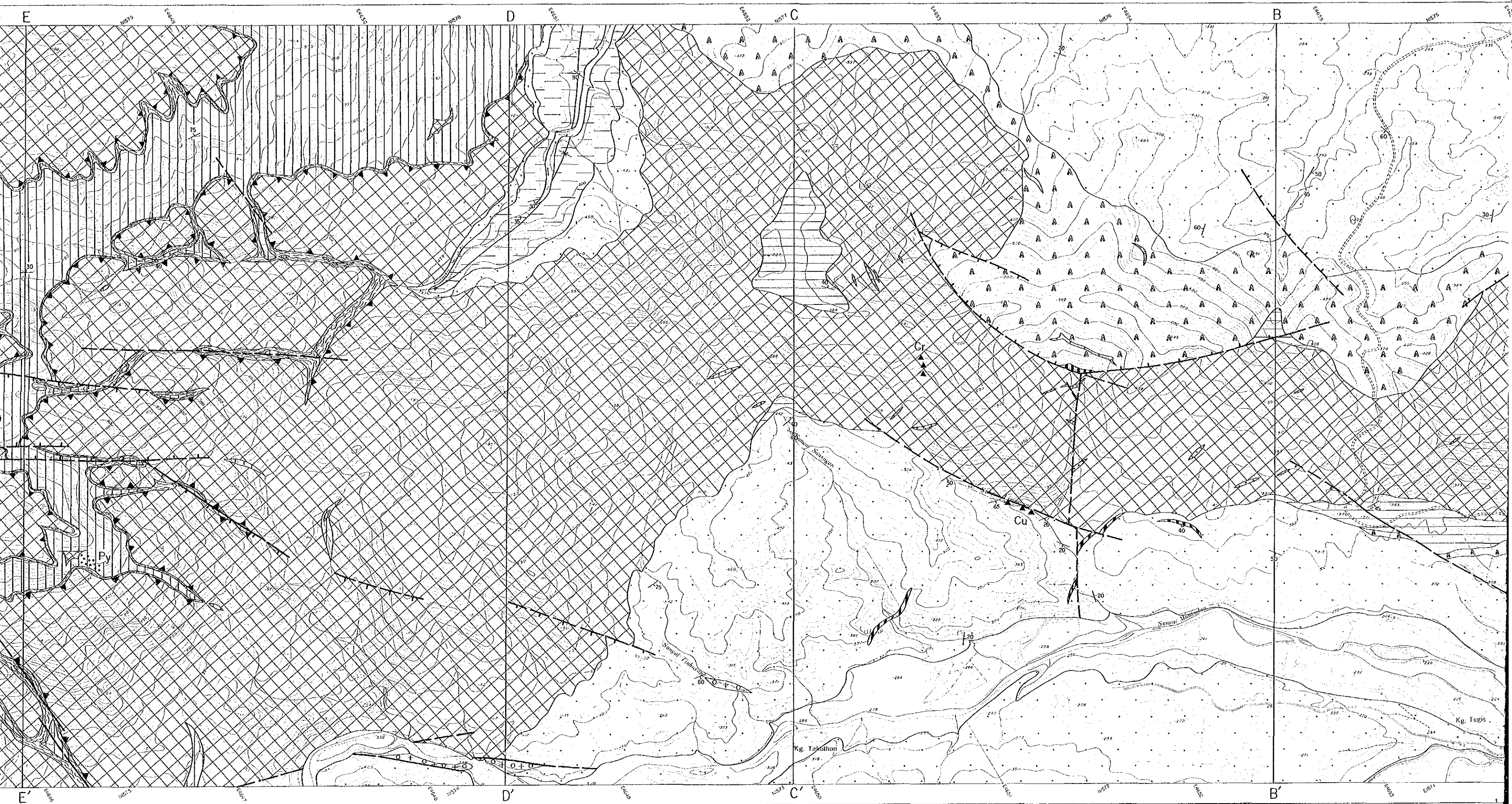


LEGEND

- | | | |
|---------------------------|--|--------------------------------|
| Pinosuk Gravels | | Gravels |
| Trusmadi Formation | | Sandstone (Hornfels) |
| | | Mudstone / Turbidite |
| Chert-Spilitite Formation | | Basalt Lava |
| Intrusive Rock | | |
| | | Microdiorite |
| | | Adamellite porphyry |
| | | Peridotite |
| | | Drill hole with mineralization |



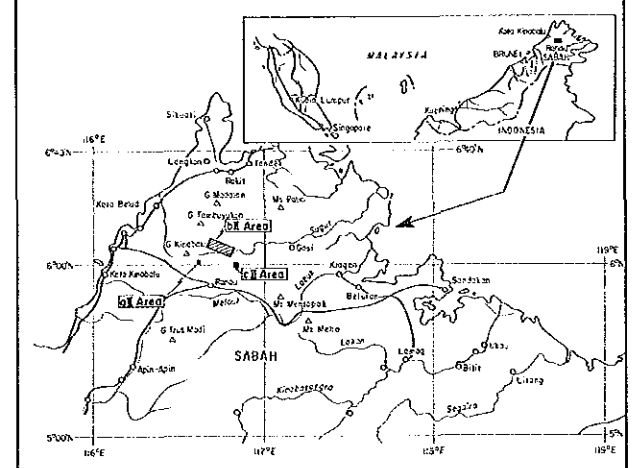




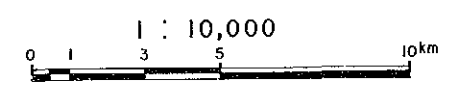
THE MINERAL EXPLORATION
IN
SABAH, MALAYSIA
PHASE II

16210
因德林力米-不月
因者其科宝成店

Geological Map of bII (Mankadau) Area

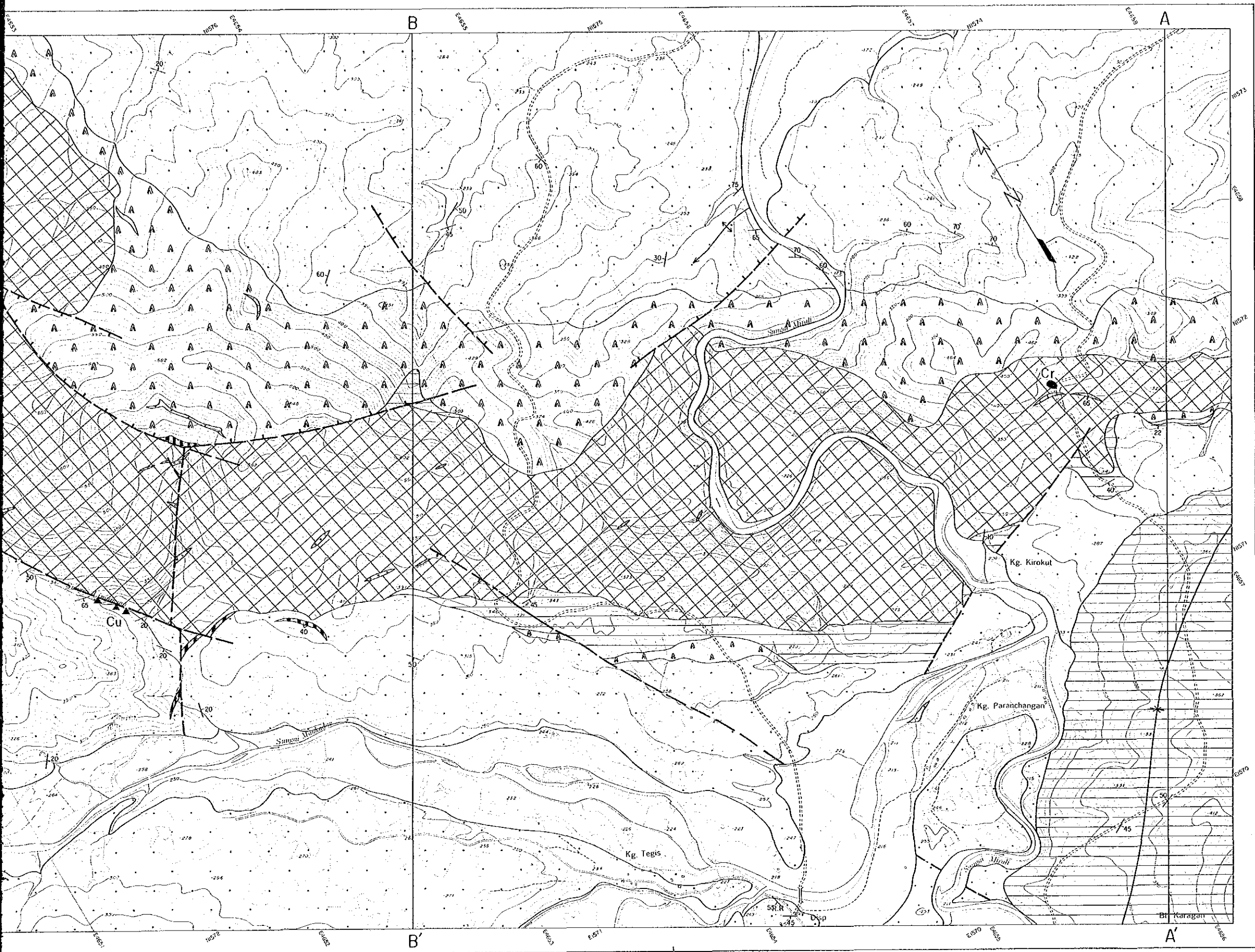


JAPAN INTERNATIONAL COOPERATION AGENCY
METAL MINING AGENCY OF JAPAN
GEOLOGICAL SURVEY OF MALAYSIA

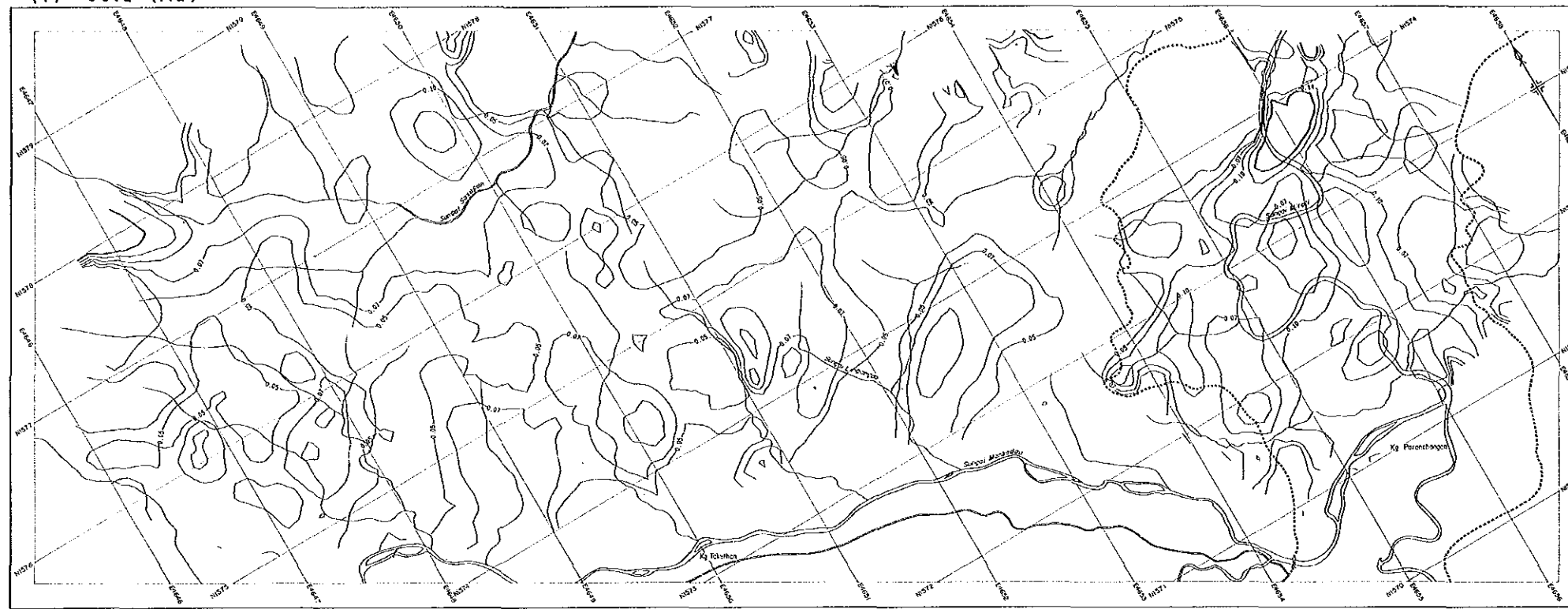


LEGEND

- Alluvial deposits
- Sandstone
- Mudstone
- Basalt
- Chert
- Hornfels
- Unknown
- Pegmatite
- Adamellite
- Peridotite
- Cr (▲) Chromite mineralization, (Floarts)
- Py Pyrite dissemination
- Cu Copper ore floats
- Thrust with mélange



(1) Gold (Au)



Contour Element	\bar{x}	$\bar{x} \pm 0.5\bar{x}$	$\bar{x} \pm 1.0\bar{x}$	$\bar{x} \pm 1.5\bar{x}$	$\bar{x} \pm 2.0\bar{x}$
Au	0.05	0.07	0.10	0.14	0.19 ^{ppm}

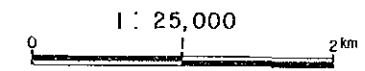
A($\bar{x} \pm 2.0\bar{x}$) contour line is drawn with thick line

THE MINERAL EXPLORATION IN SABAH, MALAYSIA PHASE II

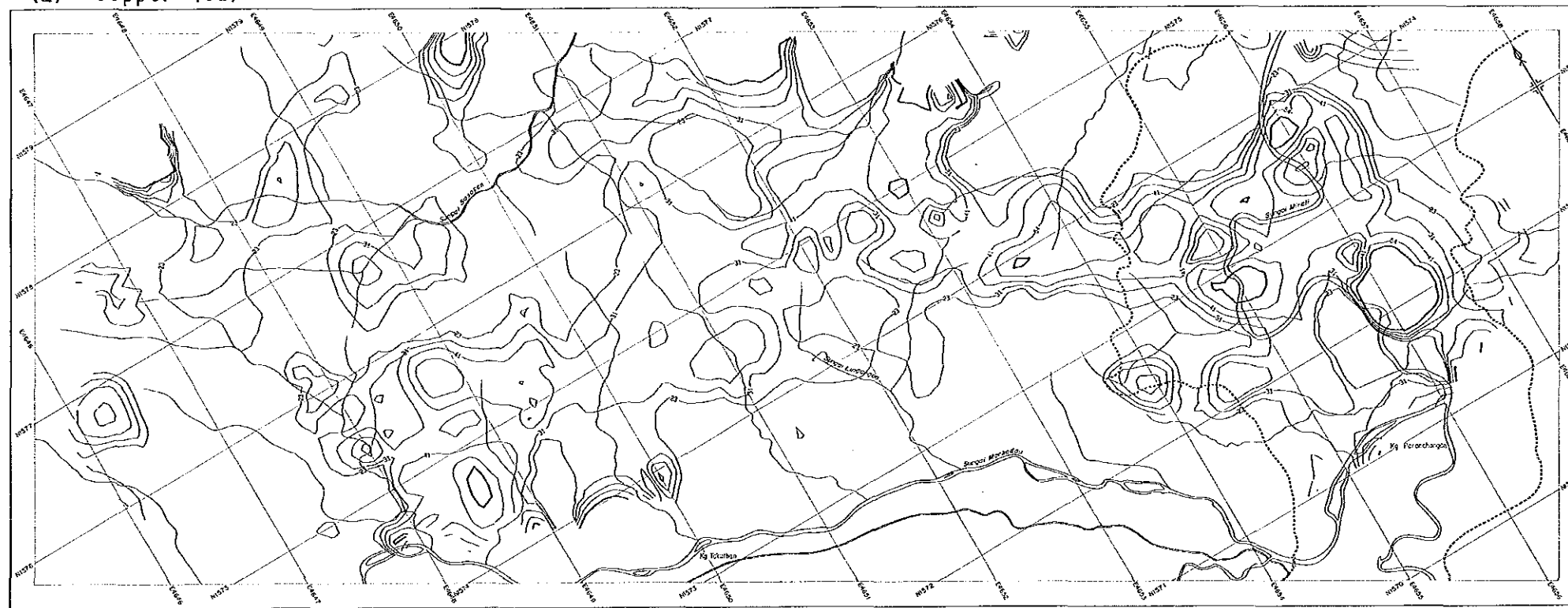
國際地質研究所
16210
國產資料室

Distribution of Each Element in Soil of bII (Mankadau) Area
(1) Gold, (2) Copper, (3) Lead

JAPAN INTERNATIONAL COOPERATION AGENCY
METAL MINING AGENCY OF JAPAN
GEOLOGICAL SURVEY OF MALAYSIA



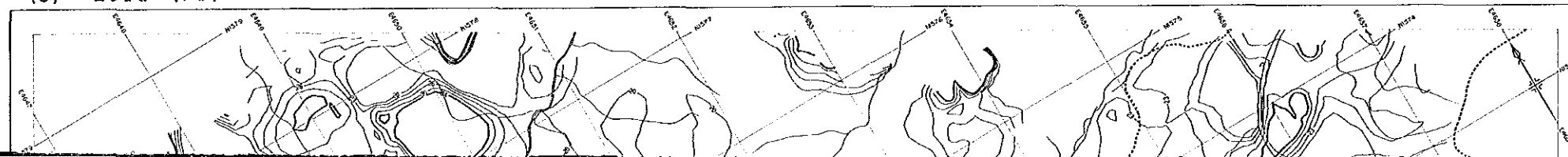
(2) Copper (Cu)

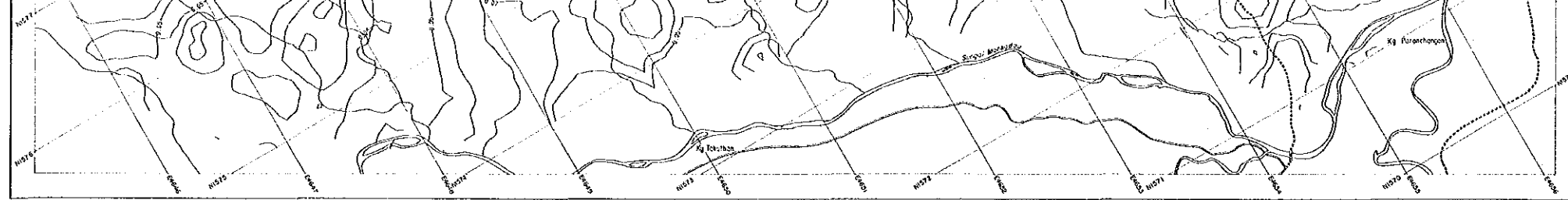


Contour Element	\bar{x}	$\bar{x} \pm 0.5\bar{x}$	$\bar{x} \pm 1.0\bar{x}$	$\bar{x} \pm 1.5\bar{x}$	$\bar{x} \pm 2.0\bar{x}$
Cu	23	31	41	54	72 ^{ppm}

A($\bar{x} \pm 2.0\bar{x}$) contour line is drawn with thick line

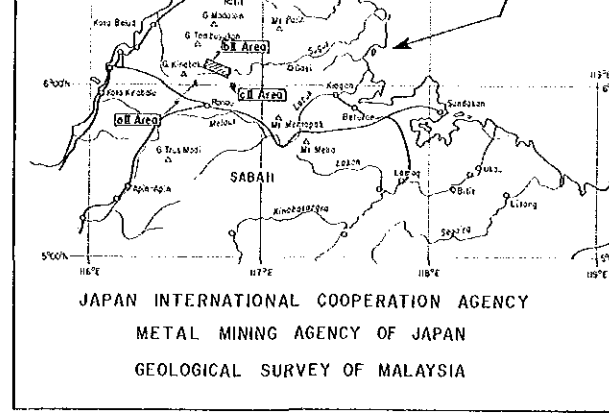
(3) Lead (Pb)





Contour Interval	\bar{x}	$\bar{x} + 0.5t$	$\bar{x} + 1.0t$	$\bar{x} + 1.5t$	$\bar{x} + 2.0t$
Au	0.05	0.07	0.10	0.14	0.19 ^{PH}

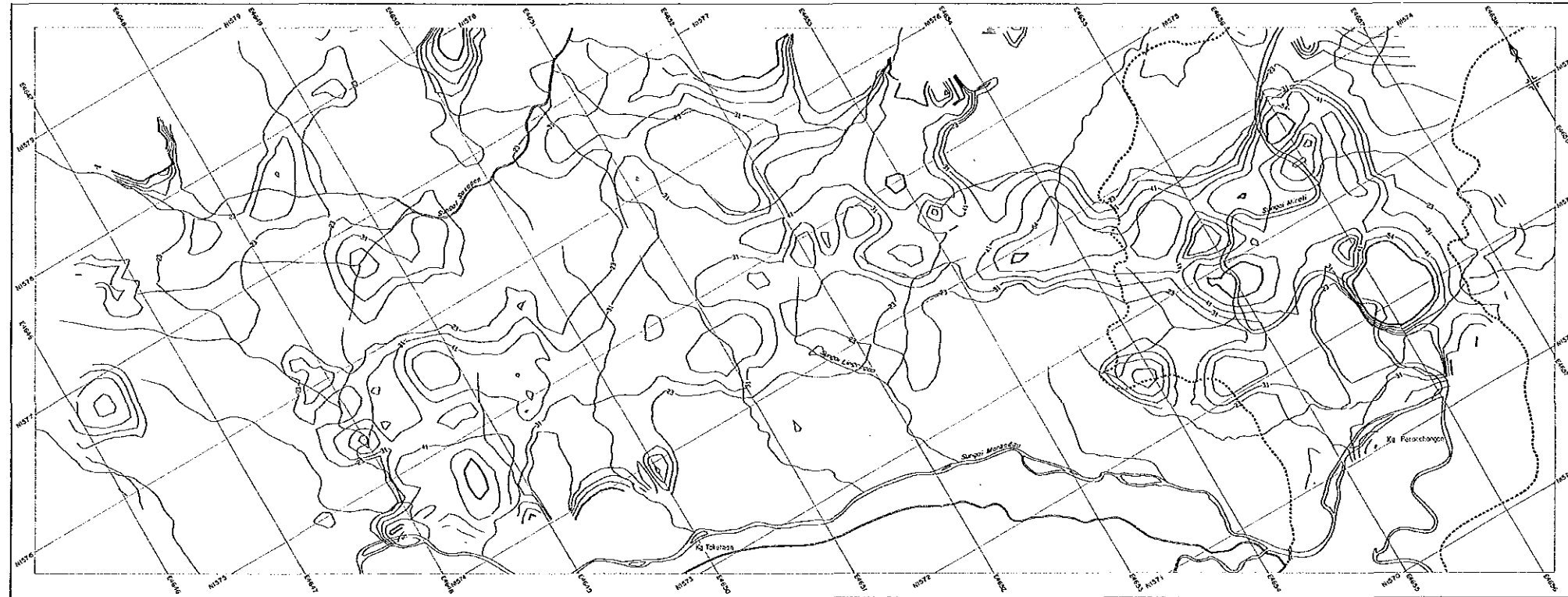
A($\bar{x} + 2.0t$) contour line is drawn with thick line



JAPAN INTERNATIONAL COOPERATION AGENCY
METAL MINING AGENCY OF JAPAN
GEOLOGICAL SURVEY OF MALAYSIA

1 : 25,000
0 2 km

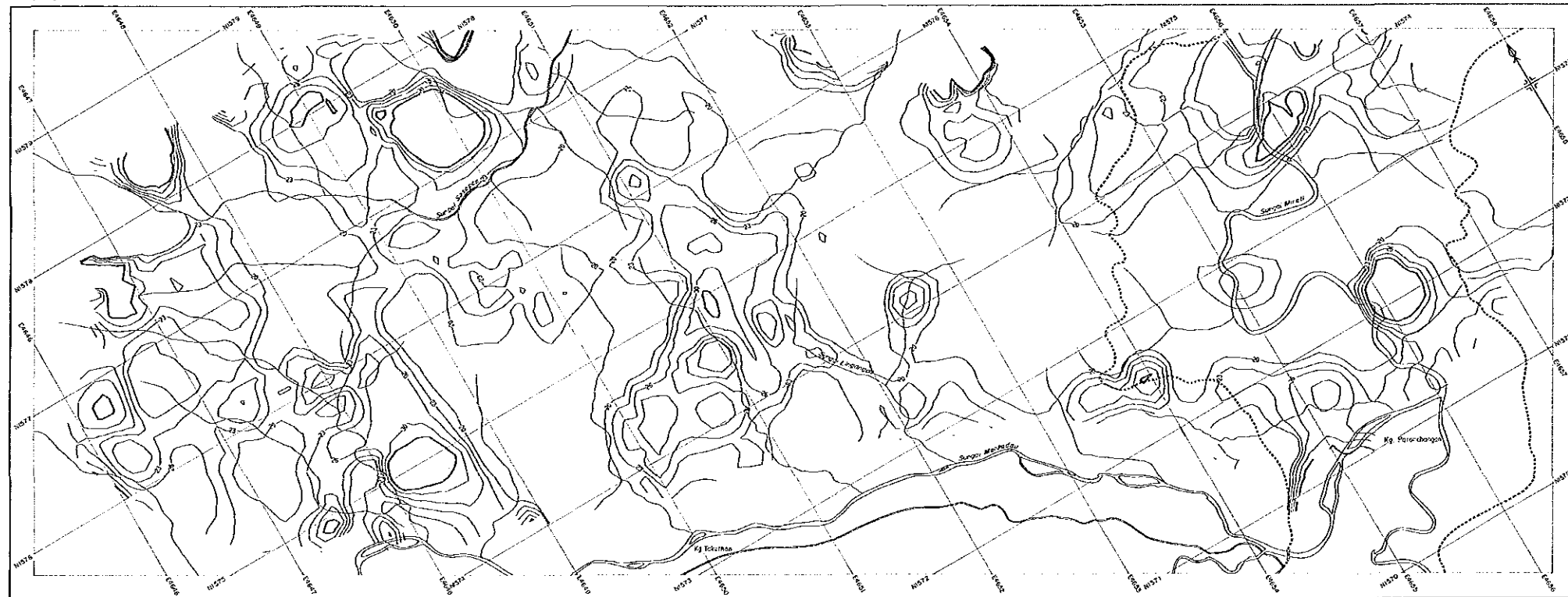
(2) Copper (Cu)



Contour Interval	\bar{x}	$\bar{x} + 0.5t$	$\bar{x} + 1.0t$	$\bar{x} + 1.5t$	$\bar{x} + 2.0t$
Cu	23	31	41	54	72 ^{PH}

A($\bar{x} + 2.0t$) contour line is drawn with thick line

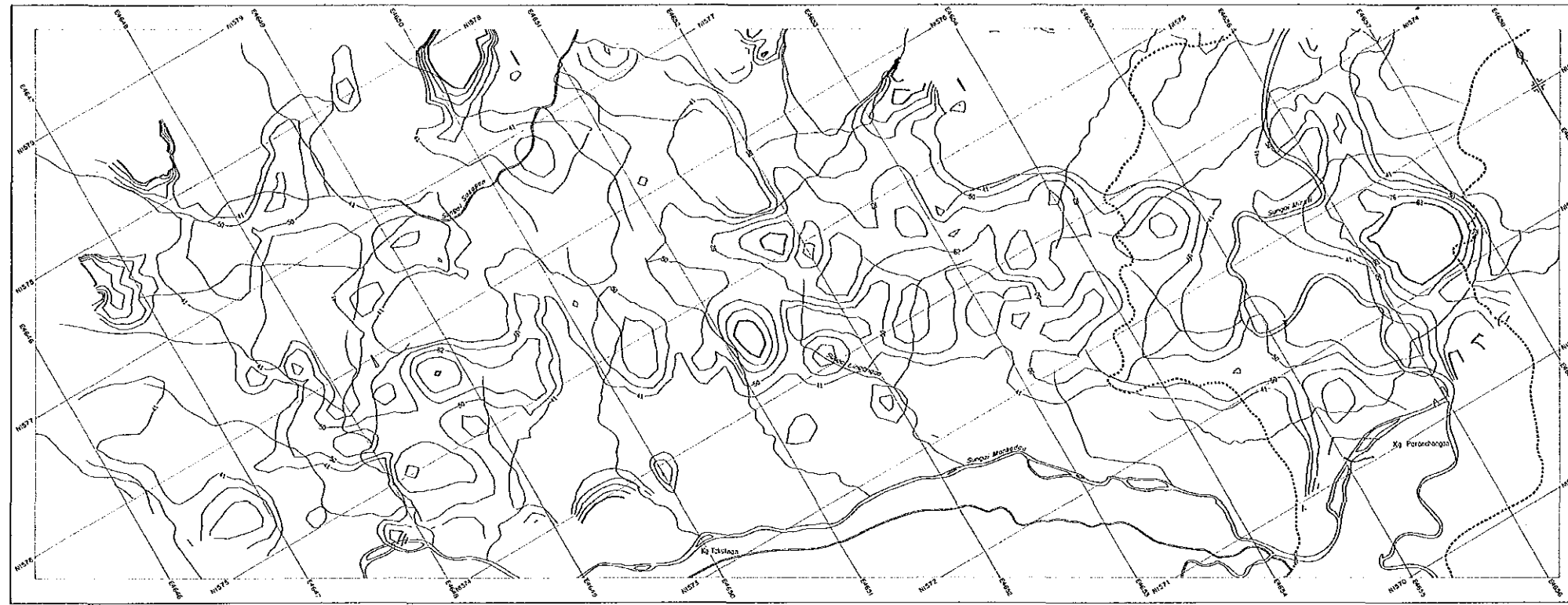
(3) Lead (Pb)



Contour Interval	\bar{x}	$\bar{x} + 0.5t$	$\bar{x} + 1.0t$	$\bar{x} + 1.5t$	$\bar{x} + 2.0t$
Pb	20	23	26	30	34 ^{PH}

A($\bar{x} + 2.0t$) contour line is drawn with thick line.

(4) Zinc (Zn)



Contour Interval	\bar{x}	$\bar{x} + 0.5\bar{x}$	$\bar{x} + 1.0\bar{x}$	$\bar{x} + 1.5\bar{x}$	$\bar{x} + 2.0\bar{x}$
Zn	41	50	62	76	93 ppm

A ($\bar{x} + 2.0\bar{x}$) contour line is drawn with thick line

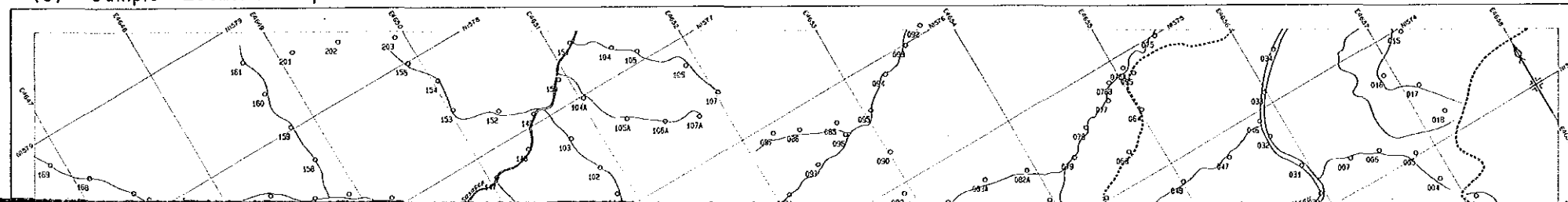
(5) Molybdenum (Mo)



Contour Interval	\bar{x}	$\bar{x} + 0.5\bar{x}$	$\bar{x} + 1.0\bar{x}$	$\bar{x} + 1.5\bar{x}$	$\bar{x} + 2.0\bar{x}$
Mo	2	3	5	6	6 ppm

A ($\bar{x} + 2.0\bar{x}$) contour line is drawn with thick line

(6) Sample Location Map

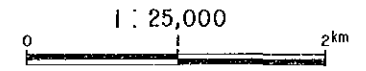


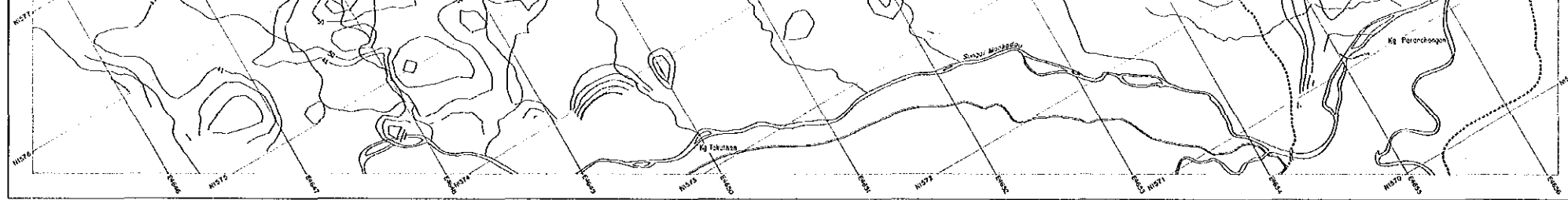
THE MINERAL EXPLORATION
IN
SABAH, MALAYSIA
PHASE II

国際協力事業団
16210
国書刊行部蔵

Distribution of Each Element in Soil of bII (Mankadau) Area
(4) Zinc, (5) Molybdenum

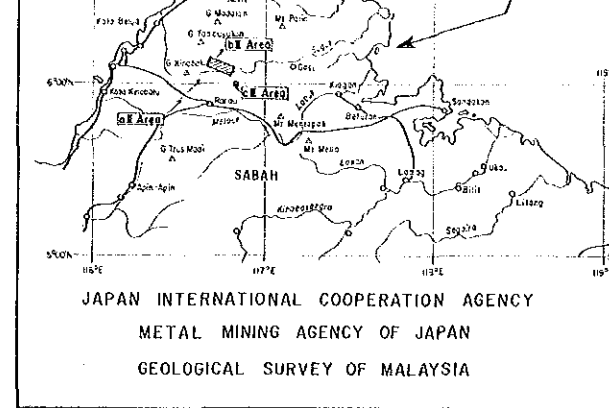
JAPAN INTERNATIONAL COOPERATION AGENCY
METAL MINING AGENCY OF JAPAN
GEOLOGICAL SURVEY OF MALAYSIA





Contour Interval	\bar{x}	$\bar{x} + 0.5I$	$\bar{x} + 1.0I$	$\bar{x} + 1.5I$	$\bar{x} + 2.0I$
Zn	41	50	62	76	93 RD

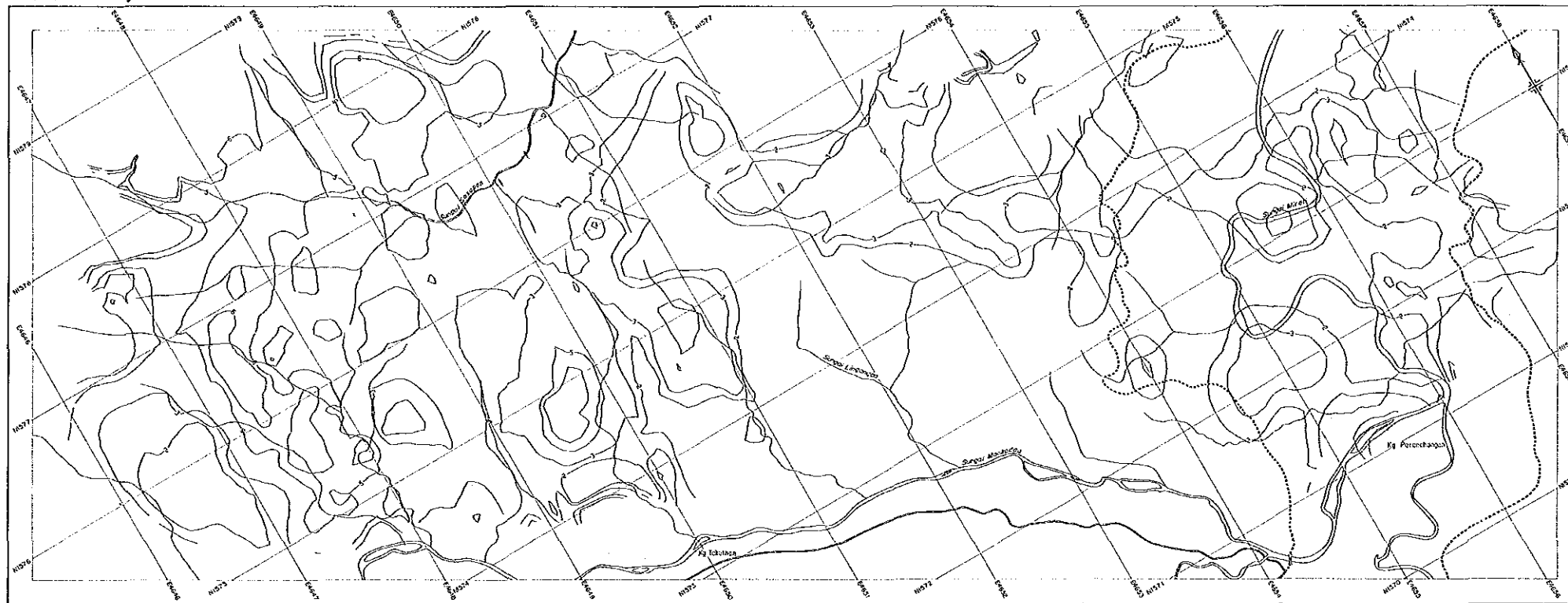
A ($\bar{x} + 2.0I$) contour line is drawn with thick line



JAPAN INTERNATIONAL COOPERATION AGENCY
 METAL MINING AGENCY OF JAPAN
 GEOLOGICAL SURVEY OF MALAYSIA

1 : 25,000
 0 1 2 km

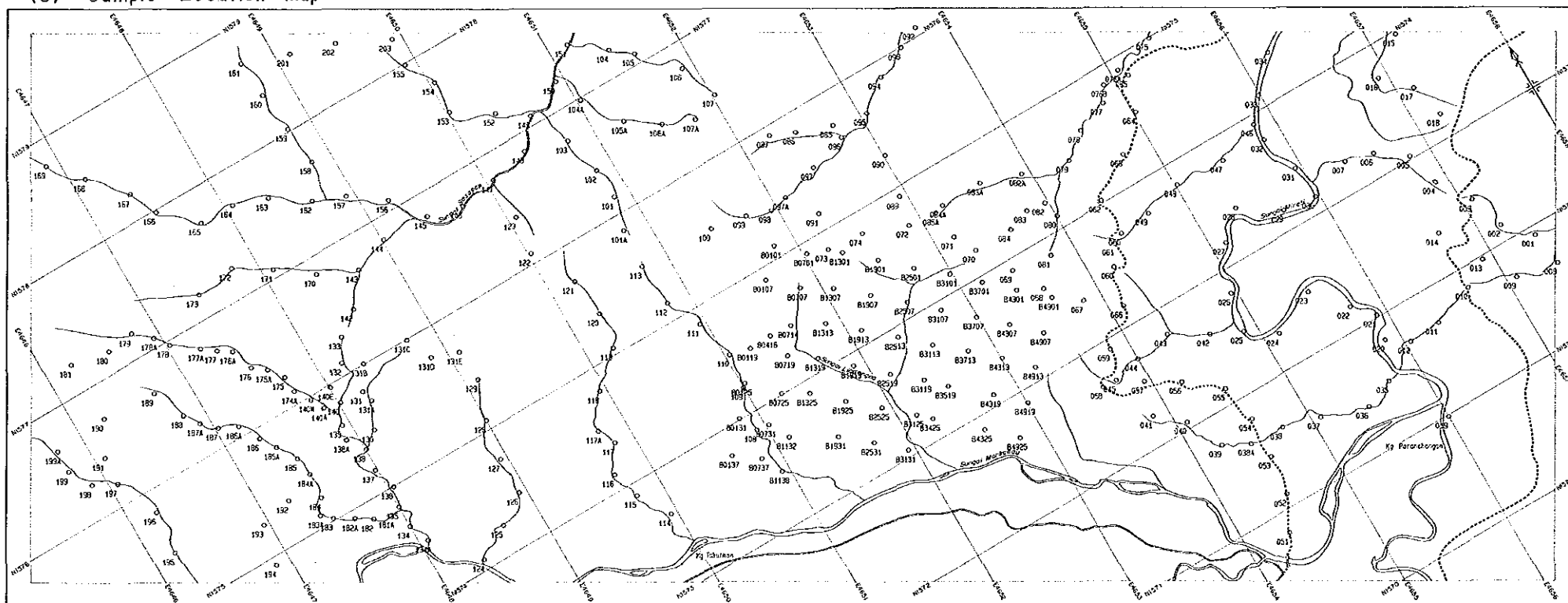
(5) Molybdenum (Mo)



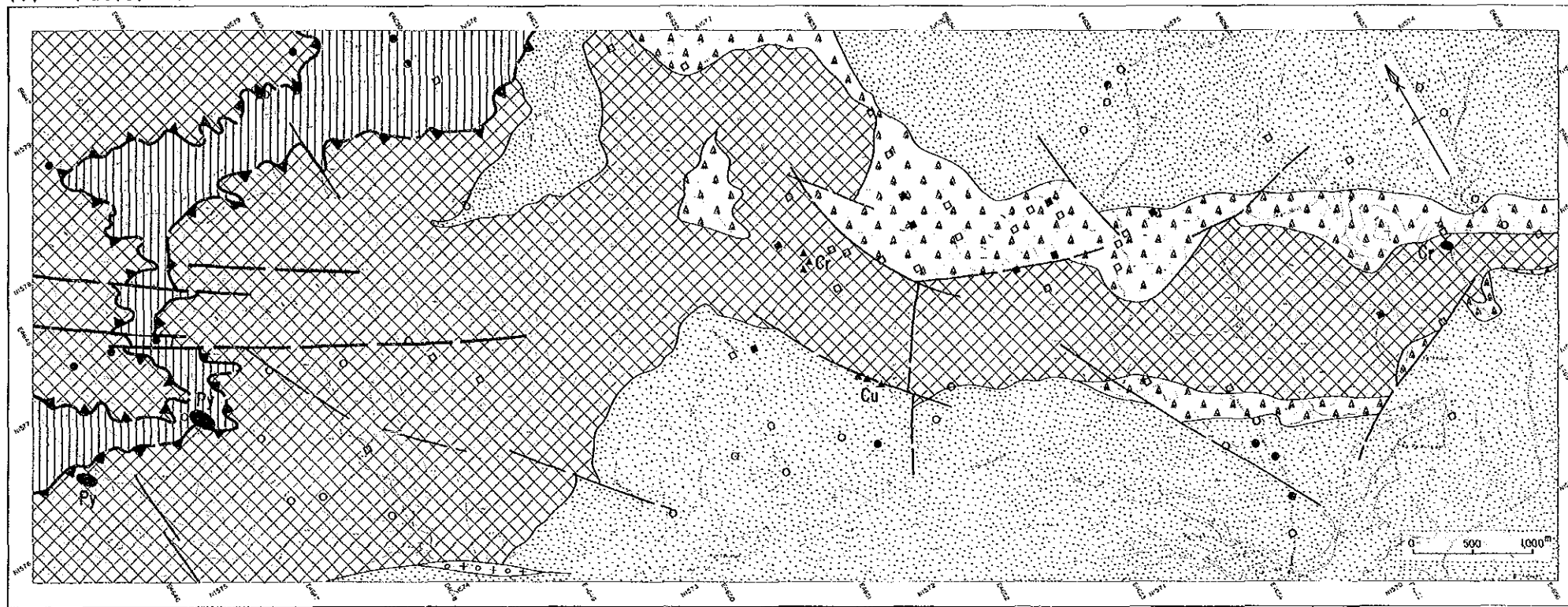
Contour Interval	\bar{x}	$\bar{x} + 0.5I$	$\bar{x} + 1.0I$	$\bar{x} + 1.5I$	$\bar{x} + 2.0I$
Mo	2	3	5	6	—

A ($\bar{x} + 2.0I$) contour line is drawn with thick line

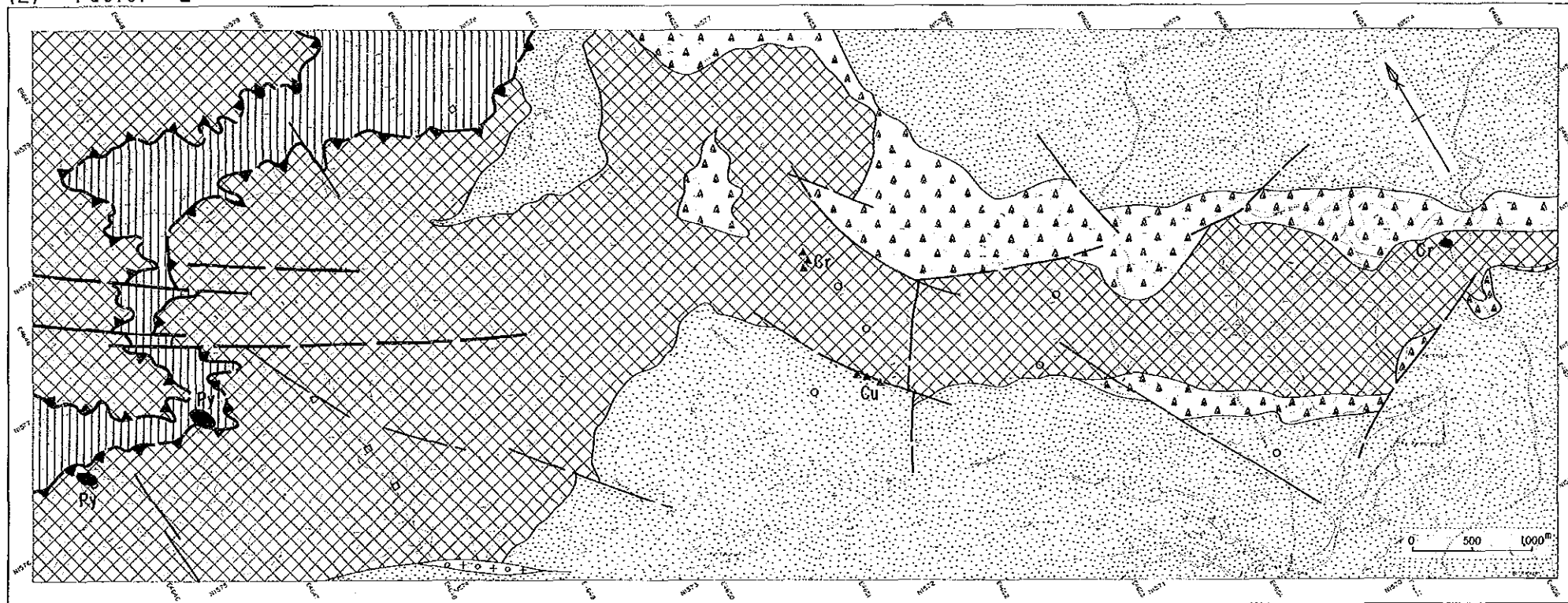
(6) Sample Location Map



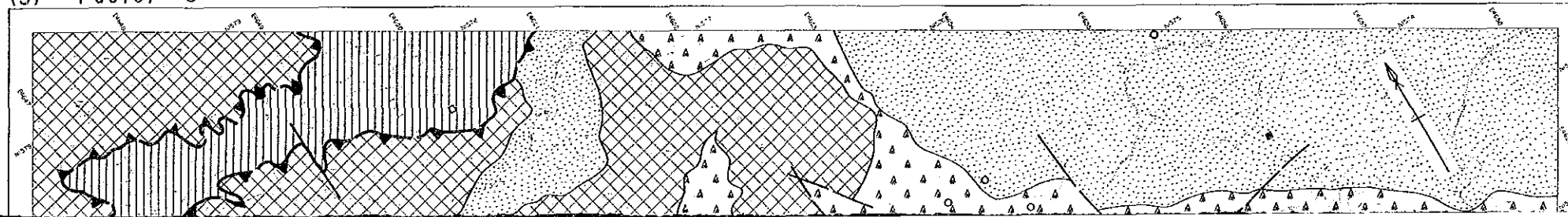
(1) Factor - 1



(2) Factor - 2



(3) Factor - 3

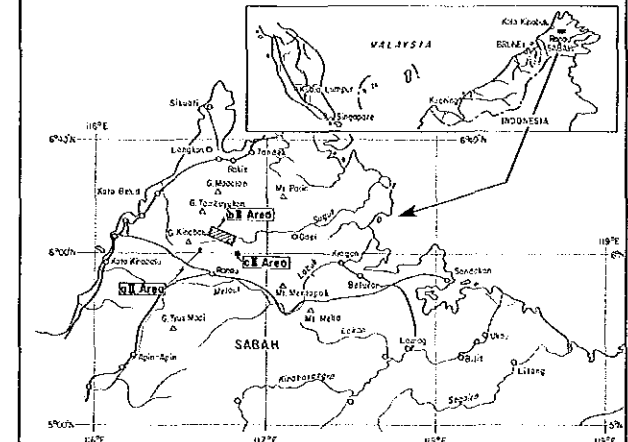


Map-5

THE MINERAL EXPLORATION
IN
SABAH, MALAYSIA
PHASE II

國際協力事業
16210
調査資料図紙

Distribution of Factor Score of bII (Mankadau) Area
(1) Factor - 1, (2) Factor - 2, (3) Factor - 3



JAPAN INTERNATIONAL COOPERATION AGENCY
METAL MINING AGENCY OF JAPAN
GEOLOGICAL SURVEY OF MALAYSIA

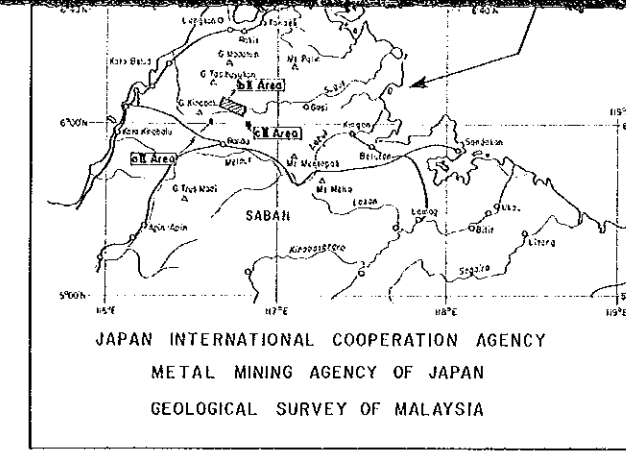
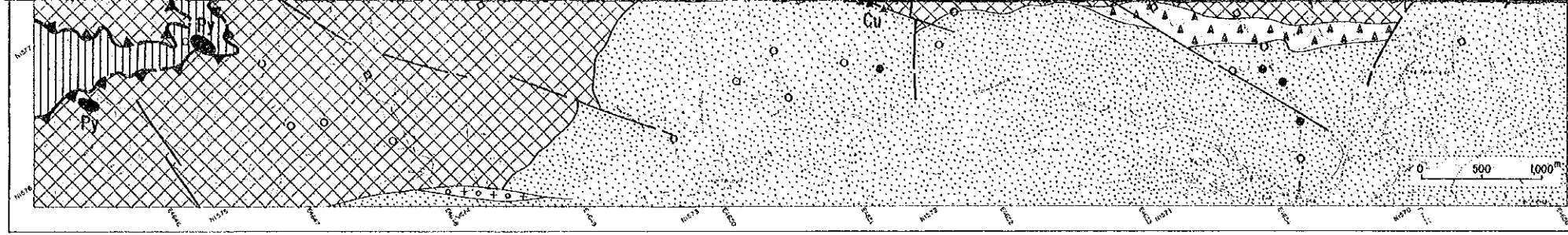
1 : 25,000
0 10 20 km

LEGEND

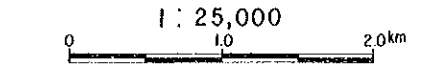
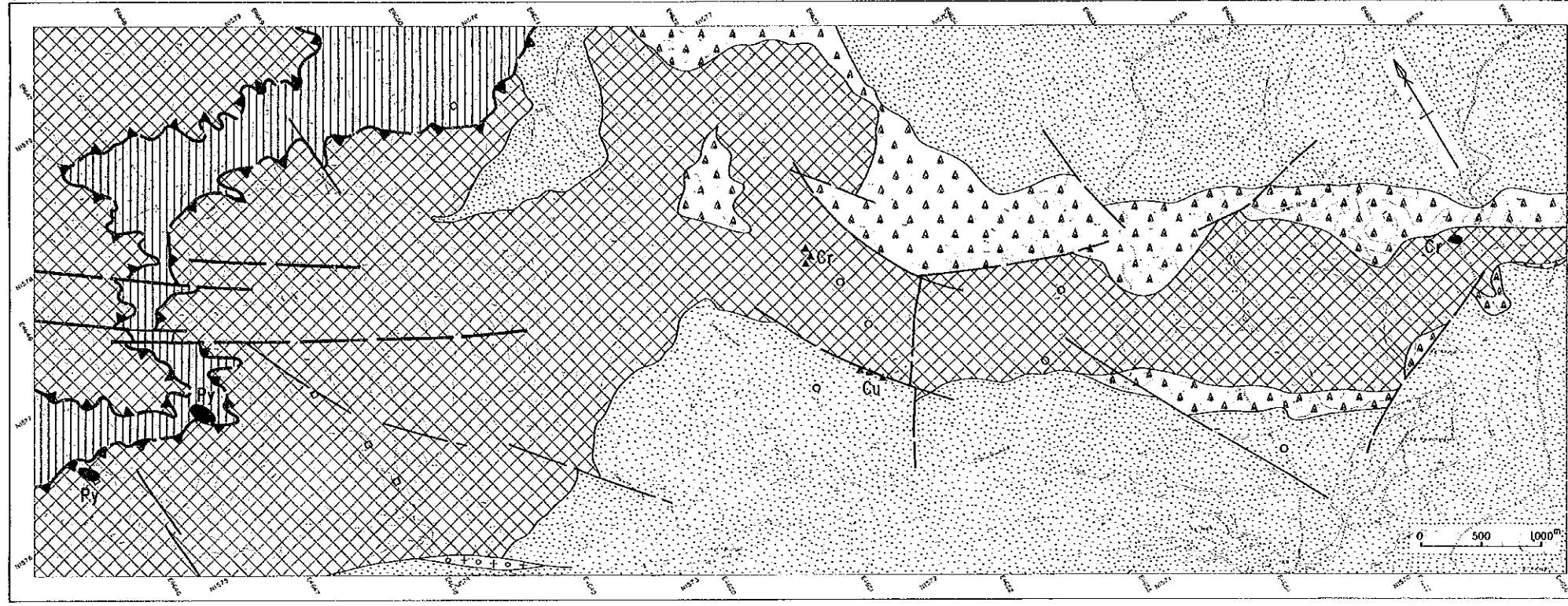
- 1.500 ≦ Factor Score
- 1.000 ≦ Factor Score < 1.500
- -1.500 < Factor Score ≦ -1.000
- Factor Score ≦ -1.500

- Chert-Spiilite Formo { Sandstone, Mudstone
- { Basalt
- (unknown) { Hornfels
- Intrusive Rock { Adamellite porphyry
- { Peridotite

- Mineralization
- Cr ●▲ Chromite mineralization (Floats)
- Py ● Pyrite dissemination
- Cu ▲▲ Copper ore floats



(2) Factor - 2



- LEGEND**
- 1.500 \leq Factor Score
 - 1.000 \leq Factor Score < 1.500
 - -1.500 < Factor Score \leq -1.000
 - Factor Score \leq -1.500

- Chert-Spilitic Formations**
- Sandstone, Mudstone
 - Basalt
 - Hornfels
- Intrusive Rock**
- Adamellite porphyry
 - Peridotite

- Mineralization**
- Chromite mineralization (Floats)
 - Pyrite dissemination
 - Copper ore floats

(3) Factor - 3

