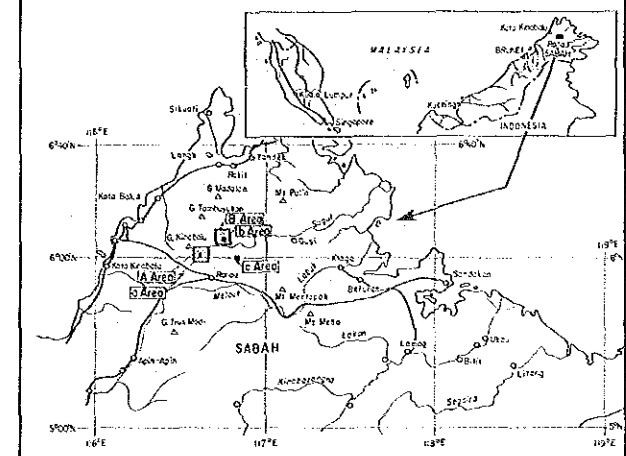


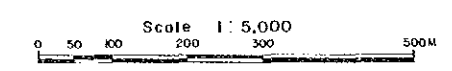
THE MINERAL EXPLORATION
IN
SABAH, MALAYSIA
PHASE I

1:5730
15730

Location Map of Tested Samples
("b" Area)



JAPAN INTERNATIONAL COOPERATION AGENCY
METAL MINING AGENCY OF JAPAN
GEOLOGICAL SURVEY OF MALAYSIA



LEGEND

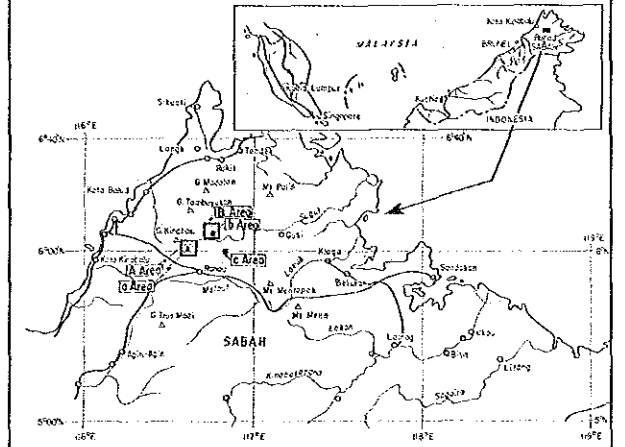
- Y-10 Sampling location and sample number
- T Thin section
- P Polished section
- X X-ray diffractive analysis
- O Chemical analysis of ore
- W Chemical analysis of whole rock



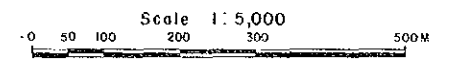
THE MINERAL EXPLORATION
IN
SABAH, MALAYSIA
PHASE I

國際協力事業團
15730
國有資源院

Location Map of Soil Samples
("b" Area)

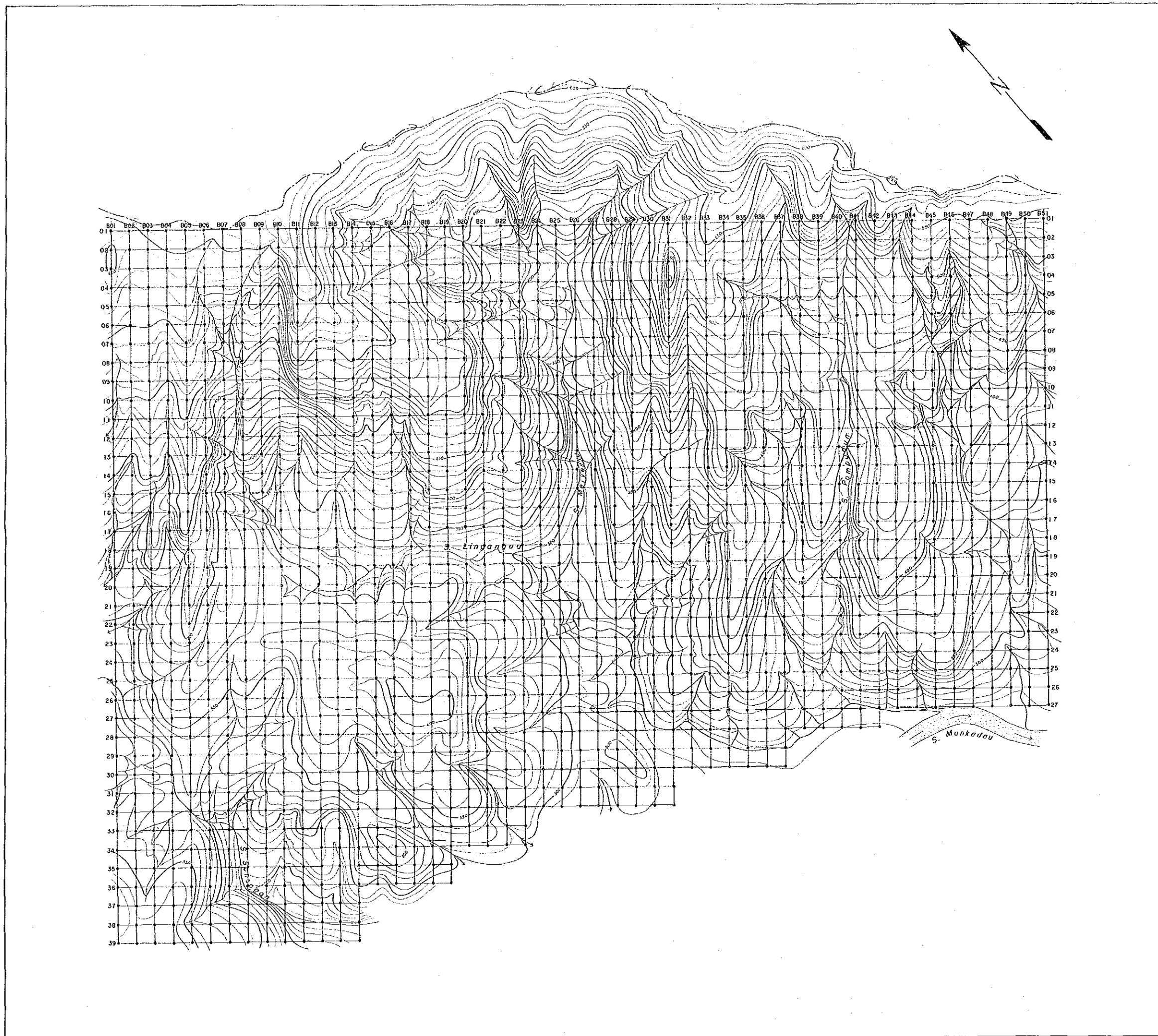
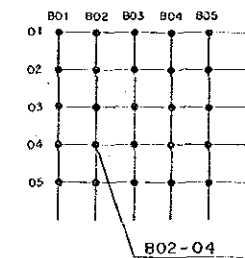


JAPAN INTERNATIONAL COOPERATION AGENCY
METAL MINING AGENCY OF JAPAN
GEOLOGICAL SURVEY OF MALAYSIA



LEGEND

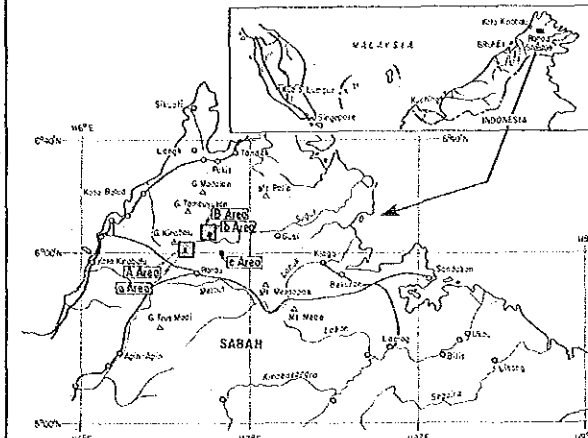
• Sample location and sample number



THE MINERAL EXPLORATION
IN
SABAH, MALAYSIA
PHASE I

15730
日本国際協力機構
日本金属矿业株式会社

Distribution of Cu in Soil Samples
("b" Area)



JAPAN INTERNATIONAL COOPERATION AGENCY
METAL MINING AGENCY OF JAPAN
GEOLOGICAL SURVEY OF MALAYSIA

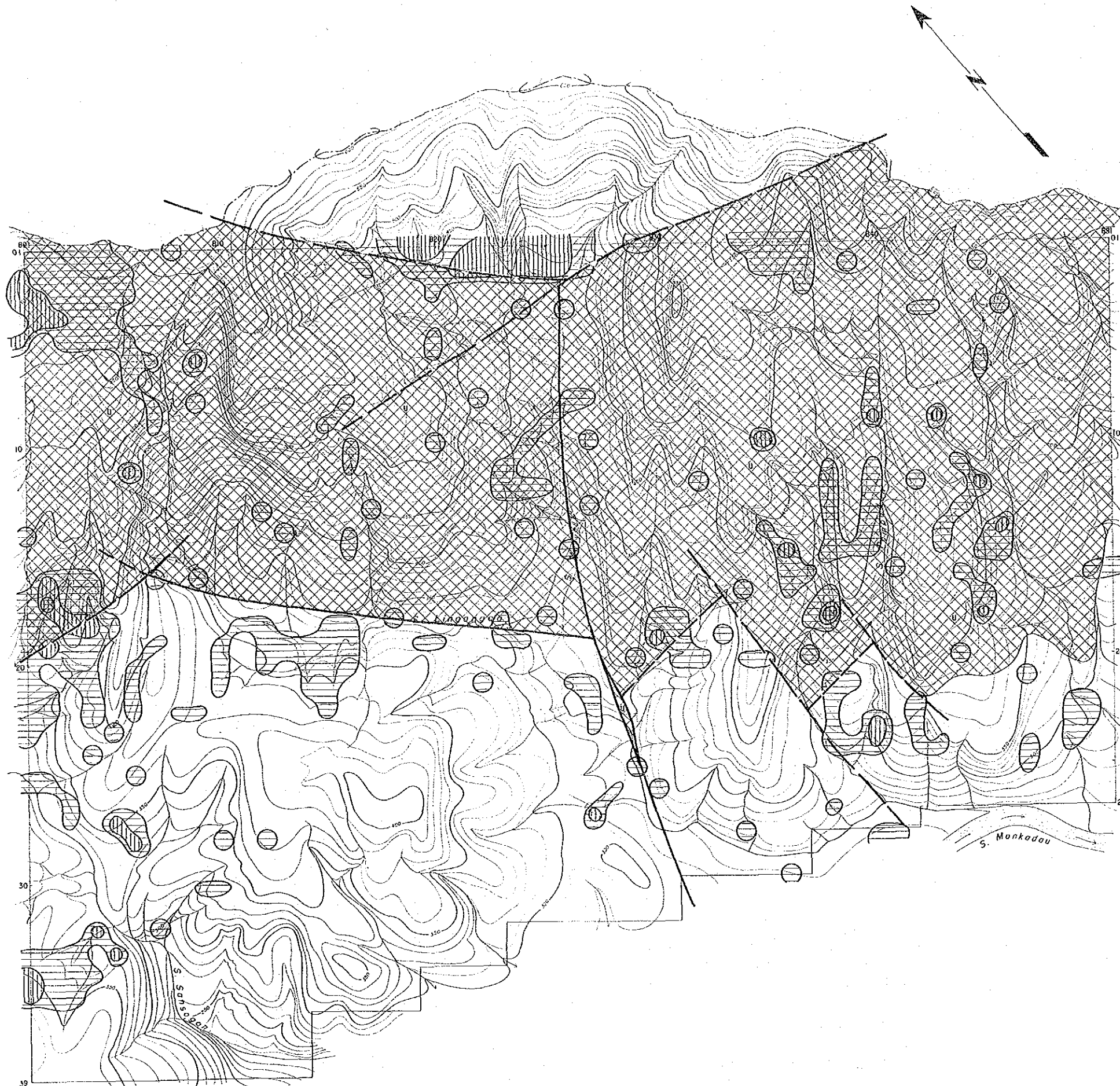
Scale 1:5,000
0 50 100 200 300 500M

LEGEND

- $\bar{x} + 3t \leq \text{Cu}$
- $\bar{x} + 2t \leq \text{Cu} < \bar{x} + 3t$
- $\bar{x} + t \leq \text{Cu} < \bar{x} + 2t$
- $\text{Cu} < \bar{x} + t$

Counter	Lithology (in logarithm)	ultrabasic rock (ppm)	sedimentary rock (ppm)
$\bar{x} + 3t$		{79.0}	{72.4}
$\bar{x} + 2t$		52.4	43.0
$\bar{x} + t$		34.8	25.6

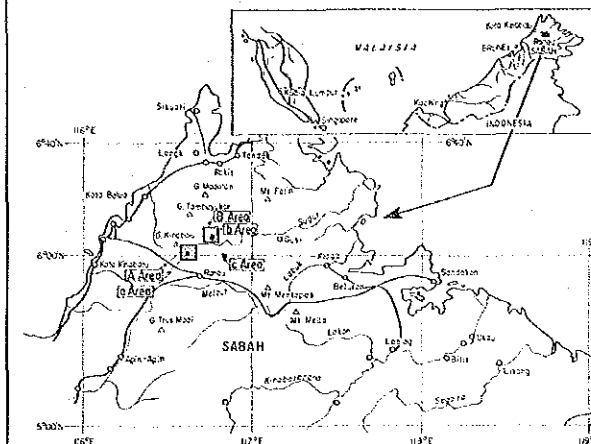
- ultrabasic rock
- sedimentary rock
- main faults



THE MINERAL EXPLORATION
IN
SABAH, MALAYSIA
PHASE I

国際協力機構
15730
国書刊行部





Distribution of Pb in Soil Samples
("b" Area)





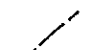
JAPAN INTERNATIONAL COOPERATION AGENCY
METAL MINING AGENCY OF JAPAN
GEOLOGICAL SURVEY OF MALAYSIA

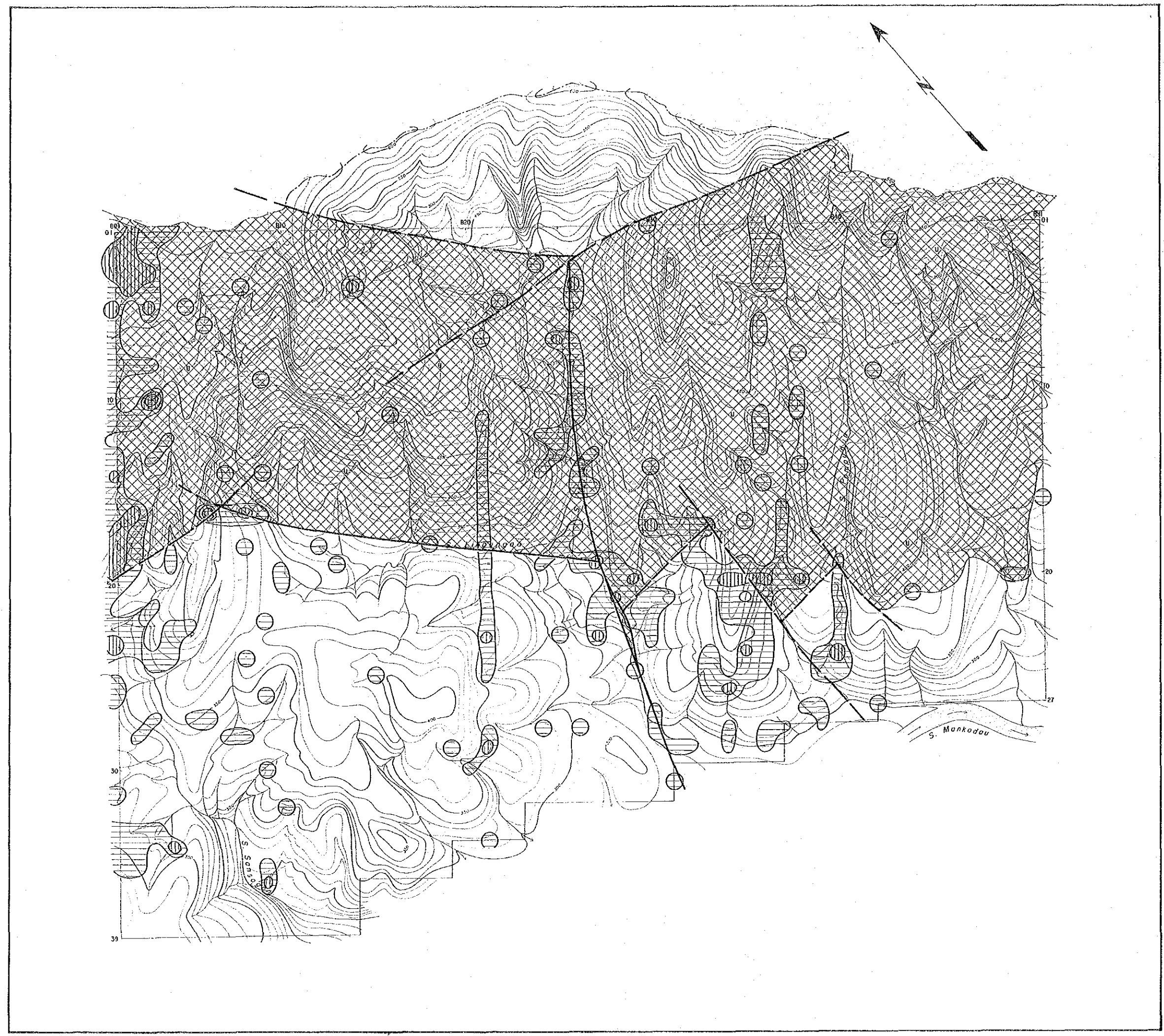
Scale 1:5,000
0 50 100 200 300 500M

LEGEND

-  $\bar{x} + 3\sigma \leq \text{Pb}$
-  $\bar{x} + 2\sigma \leq \text{Pb} < \bar{x} + 3\sigma$
-  $\bar{x} + \sigma \leq \text{Pb} < \bar{x} + 2\sigma$
-  $\text{Pb} < \bar{x} + \sigma$

Counter	Lithology (in logarithm)	ultrabasic rock (ppm)	sedimentary rock (ppm)
$\bar{x} + 3\sigma$		36.9	(43.8)
$\bar{x} + 2\sigma$		28.0	34.0
$\bar{x} + \sigma$		21.3	26.4

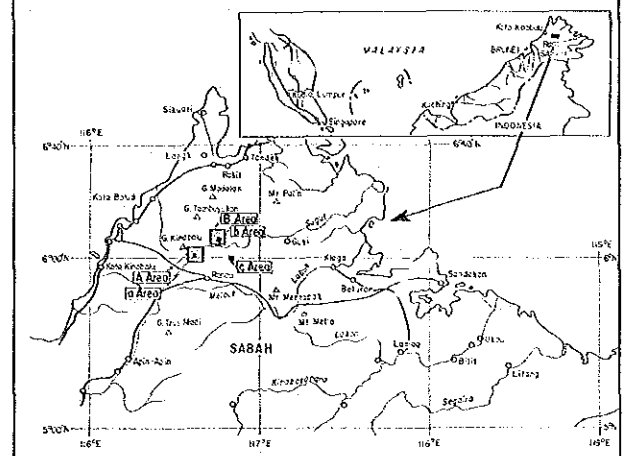
-  ultrabasic rock
-  sedimentary rock
-  main faults



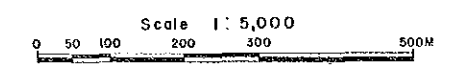
THE MINERAL EXPLORATION
IN
SABAH, MALAYSIA
PHASE I

1955.12.25
15730
1957.11.27



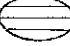

Distribution of Zn in Soil Samples
("b" Area)






JAPAN INTERNATIONAL COOPERATION AGENCY
METAL MINING AGENCY OF JAPAN
GEOLOGICAL SURVEY OF MALAYSIA

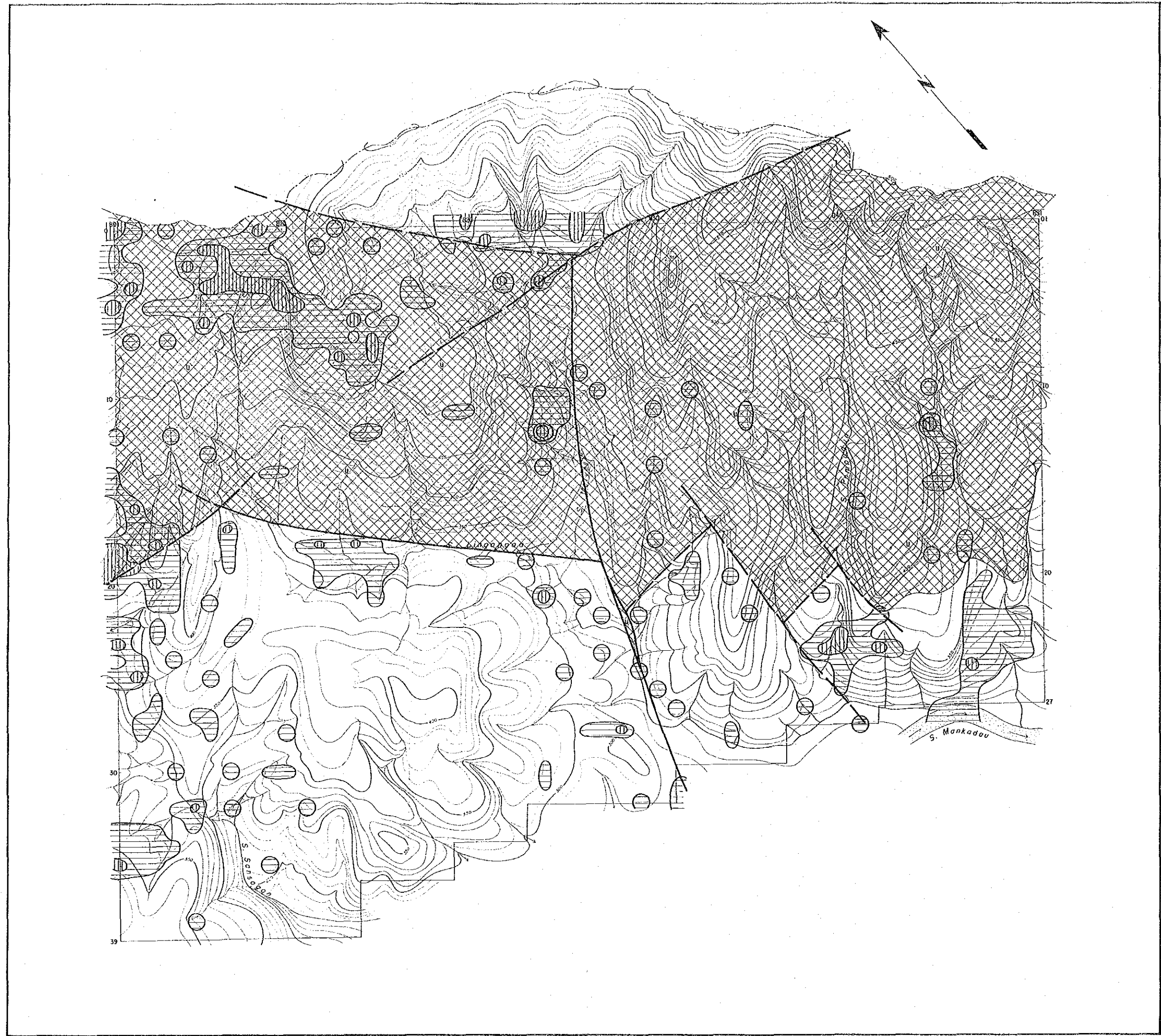


LEGEND

-  $\bar{x} + 3t \leq \text{Zn}$
-  $\bar{x} + 2t \leq \text{Zn} < \bar{x} + 3t$
-  $\bar{x} + t \leq \text{Zn} < \bar{x} + 2t$
-  $\text{Zn} < \bar{x} + t$

Counter	Lithology (in logarithm)	ultrabasic rock (ppm)	sedimentary rock (ppm)
$\bar{x} + 3t$		138.2	(106.6)
$\bar{x} + 2t$		98.2	69.7
$\bar{x} + t$		69.9	45.5

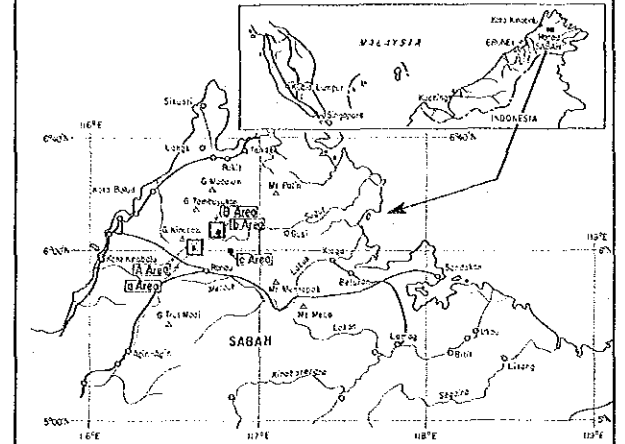
-  ultrabasic rock
-  sedimentary rock
-  main faults



THE MINERAL EXPLORATION
IN
SABAH, MALAYSIA
PHASE I

国際協力事業団
15730
図書資料室蔵書






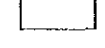

Score - Sum Map of Soil Samples
("b" Area)

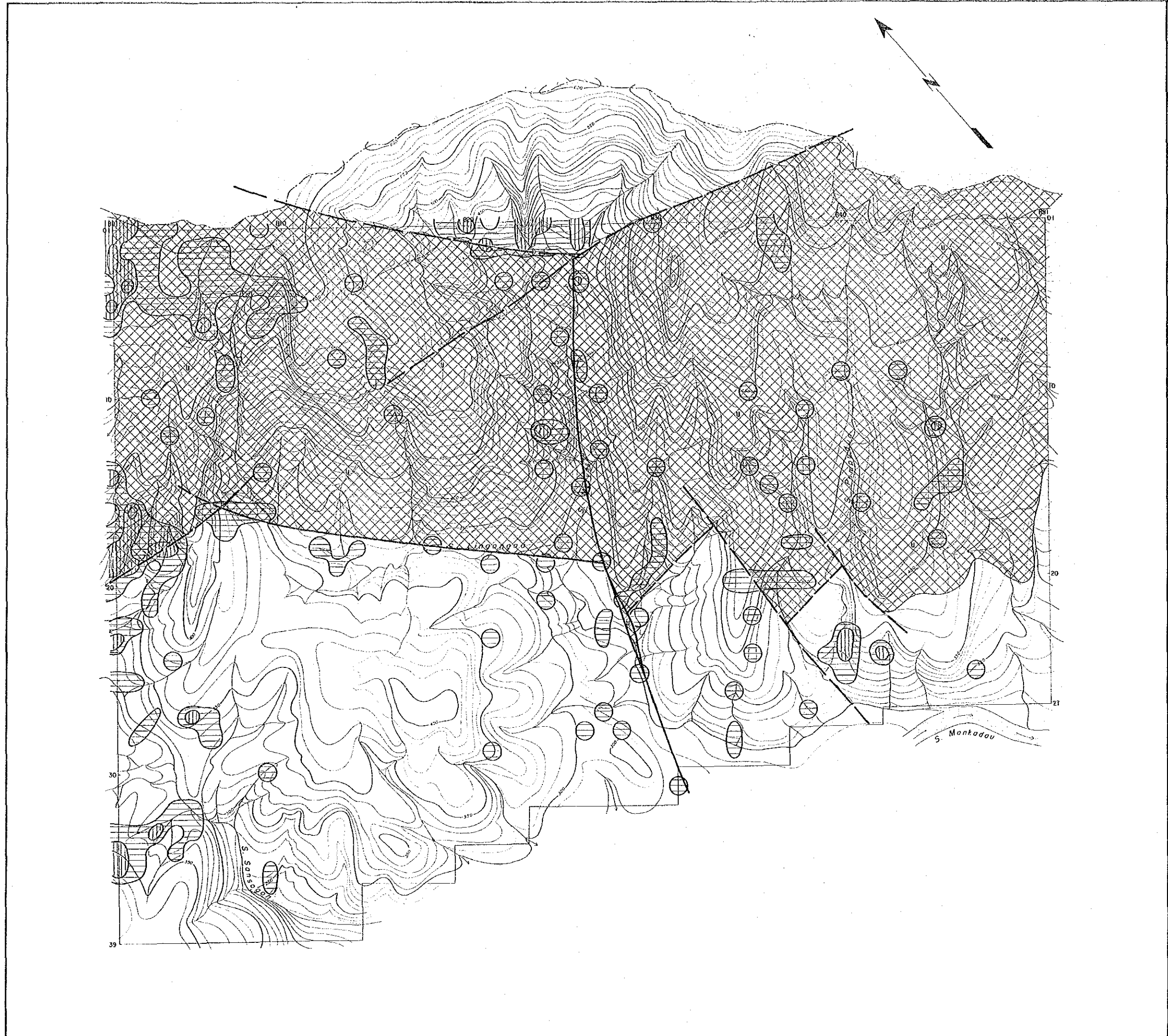


JAPAN INTERNATIONAL COOPERATION AGENCY
METAL MINING AGENCY OF JAPAN
GEOLOGICAL SURVEY OF MALAYSIA

Scale 1:5,000
0 50 100 200 300 500M

LEGEND

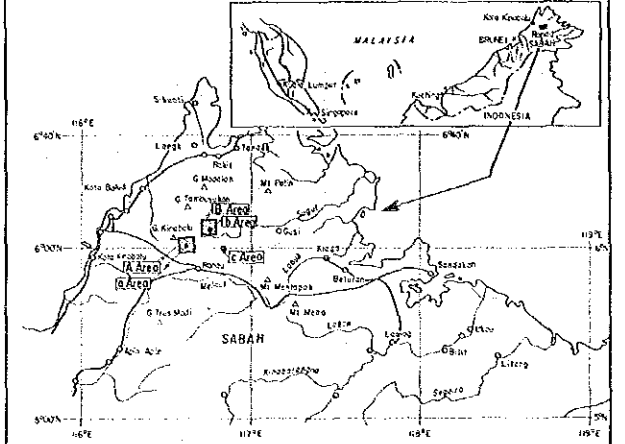
-  6 ≤ Score
-  4 ≤ Score < 6
-  2 ≤ Score < 4
-  Score < 2
-  ultrabasic rock
-  sedimentary rock
-  main faults



THE MINERAL EXPLORATION
IN
SABAH, MALAYSIA
PHASE I

15730

Geochemical Interpretation Map
("b" Area)



JAPAN INTERNATIONAL COOPERATION AGENCY
METAL MINING AGENCY OF JAPAN
GEOLOGICAL SURVEY OF MALAYSIA

Scale 1:5,000
0 50 100 200 300 500M

LEGEND

anomalous zone

Trusmi Formation

sandstone
 chert
 shale

basalt

Intrusive Rocks

pegmatite
 ultrabasic rock

Fault (certain)

Strike and dip

Geological Profile line

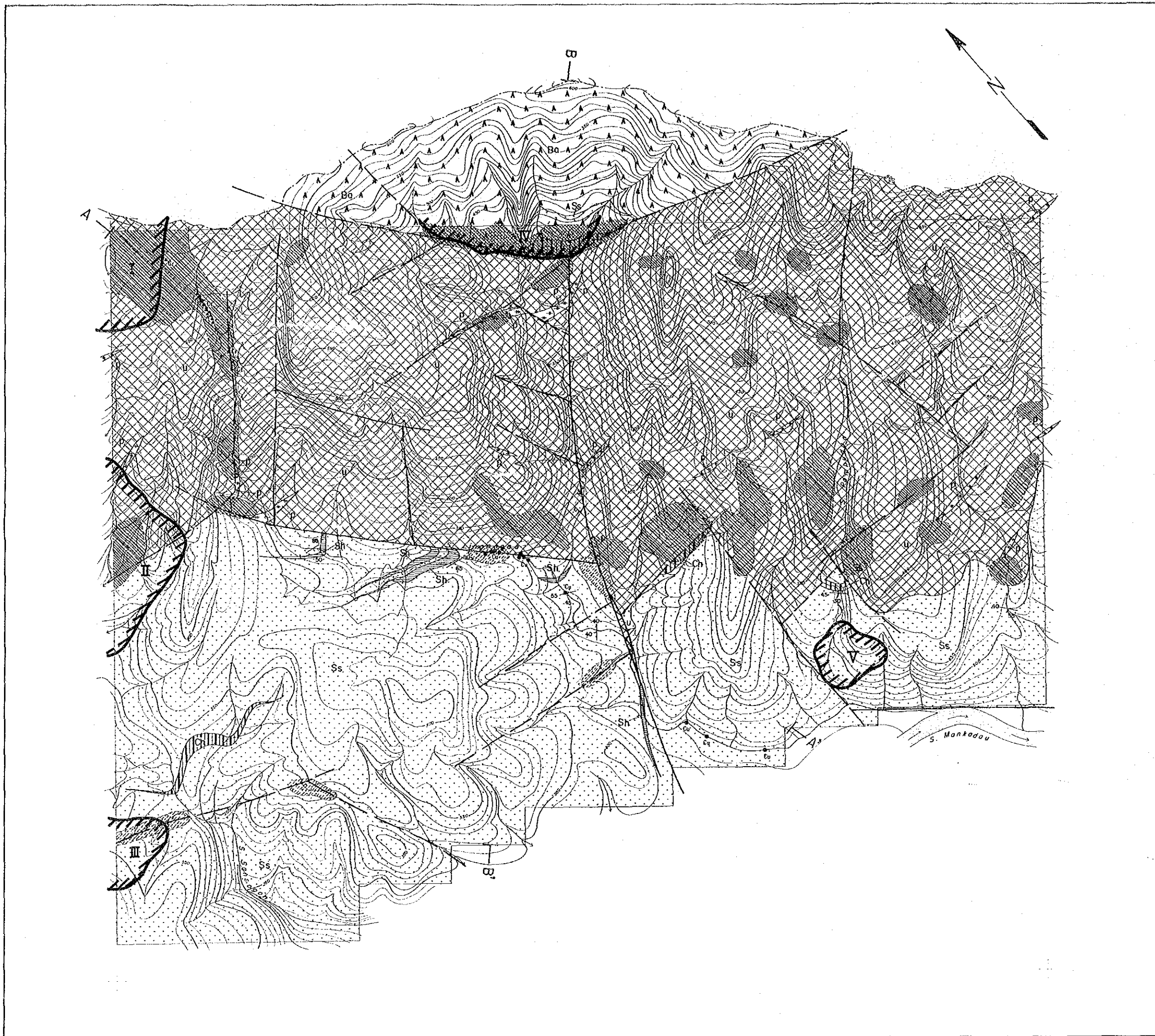
lateritic soil

argillized soil

lateritic and argillized soil

float of copper boulder

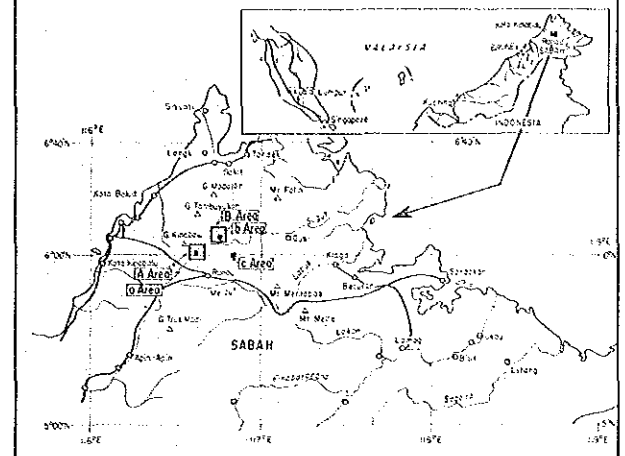
float of chlorite boulder



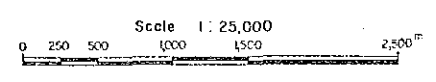
THE MINERAL EXPLORATION
IN
SABAH, MALAYSIA
PHASE I

15730
國勢図力等諸用
図書資料室蔵

Location Map of Station and Sections
(“B” Area)

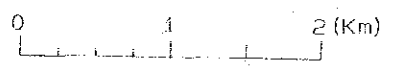
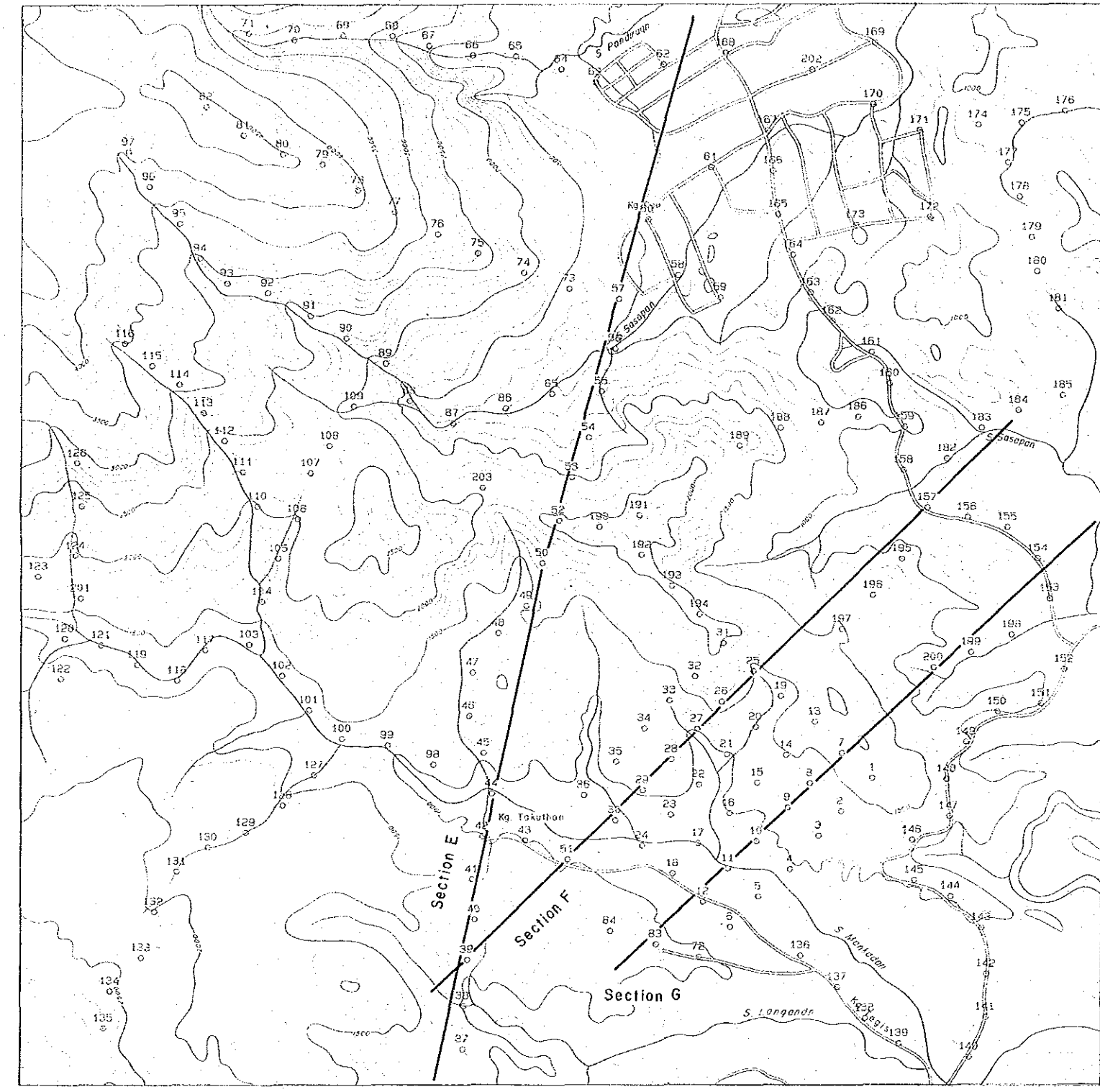
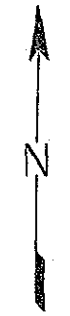


JAPAN INTERNATIONAL COOPERATION AGENCY
METAL MINING AGENCY OF JAPAN
GEOLOGICAL SURVEY OF MALAYSIA



LEGEND

- 100 Station and No.
- 100 101 Line of Section

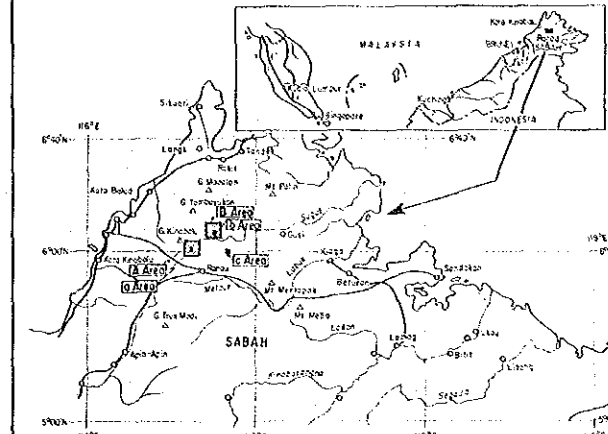


THE MINERAL EXPLORATION
IN
SABAH, MALAYSIA
PHASE I

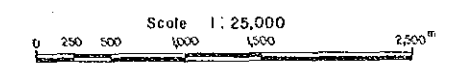
15730

Apparent Resistivity Plan Map [2048Hz]
(Unit:ohm-m)


(B" Area)

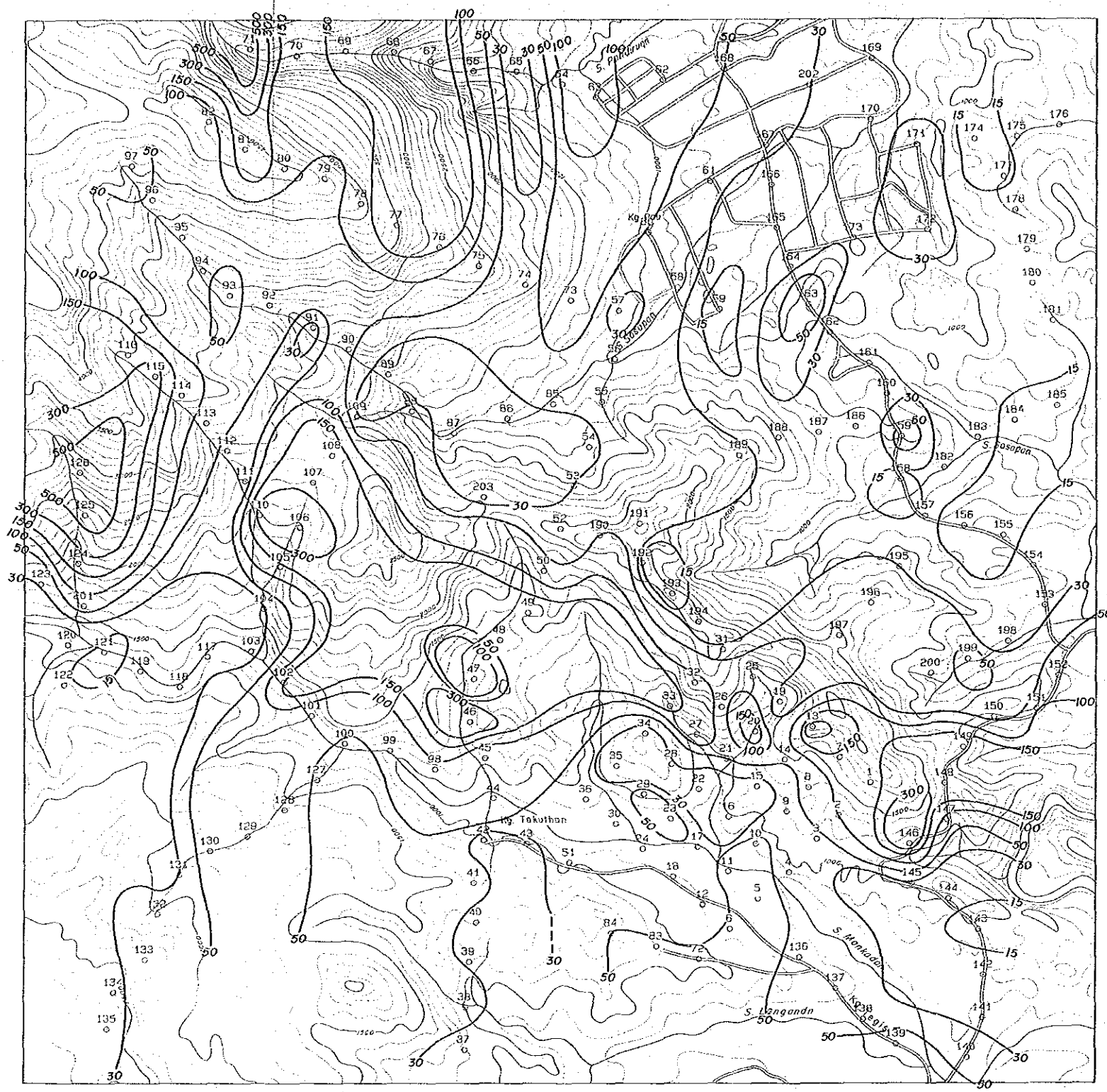


JAPAN INTERNATIONAL COOPERATION AGENCY
METAL MINING AGENCY OF JAPAN
GEOLOGICAL SURVEY OF MALAYSIA



LEGEND

- 100
○ Station and No.
-  Resistivity Contour

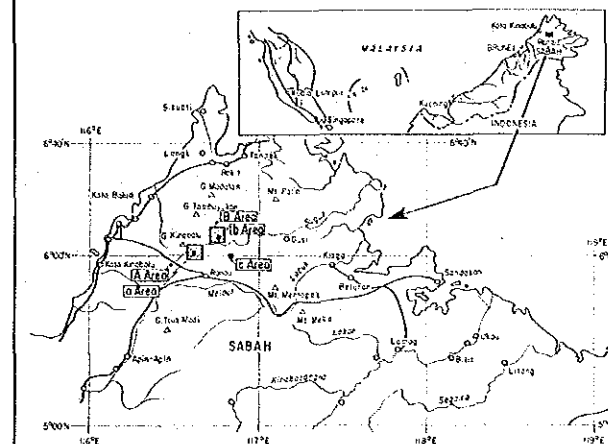


THE MINERAL EXPLORATION
IN
SABAH, MALAYSIA
PHASE I

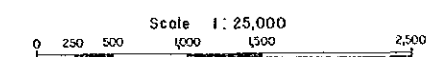
15730
圖書資料收藏者

Apparent Resistivity Plan Map [1024Hz]
(Unit:ohm-m)

(2B" Area)

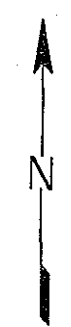
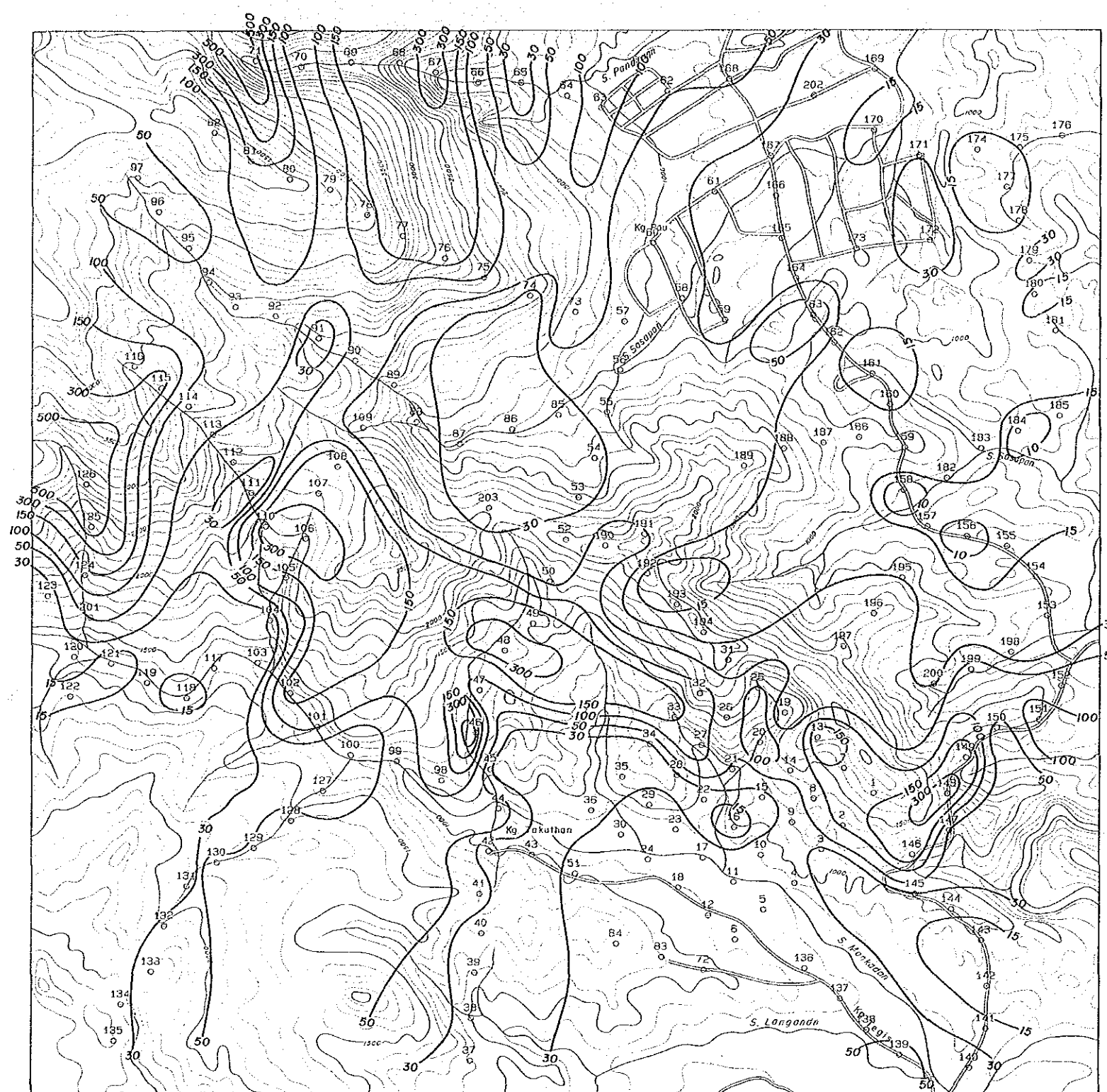


JAPAN INTERNATIONAL COOPERATION AGENCY
METAL MINING AGENCY OF JAPAN
GEOLOGICAL SURVEY OF MALAYSIA



LEGEND

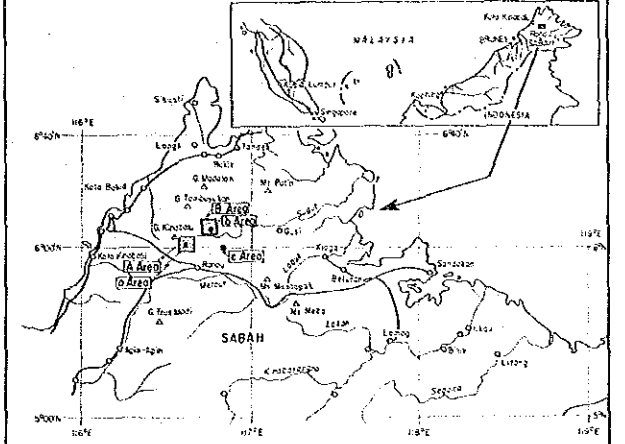
- 100
○ - Station and No.
- Resistivity Contour



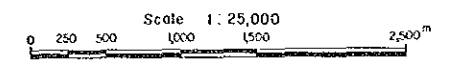
THE MINERAL EXPLORATION
IN
SABAH, MALAYSIA
PHASE 1

国际地质学杂志
15730
地质研究所

Apparent Resistivity Plan Map [512Hz]
(Unit: ohm-m)
(2B" Area)

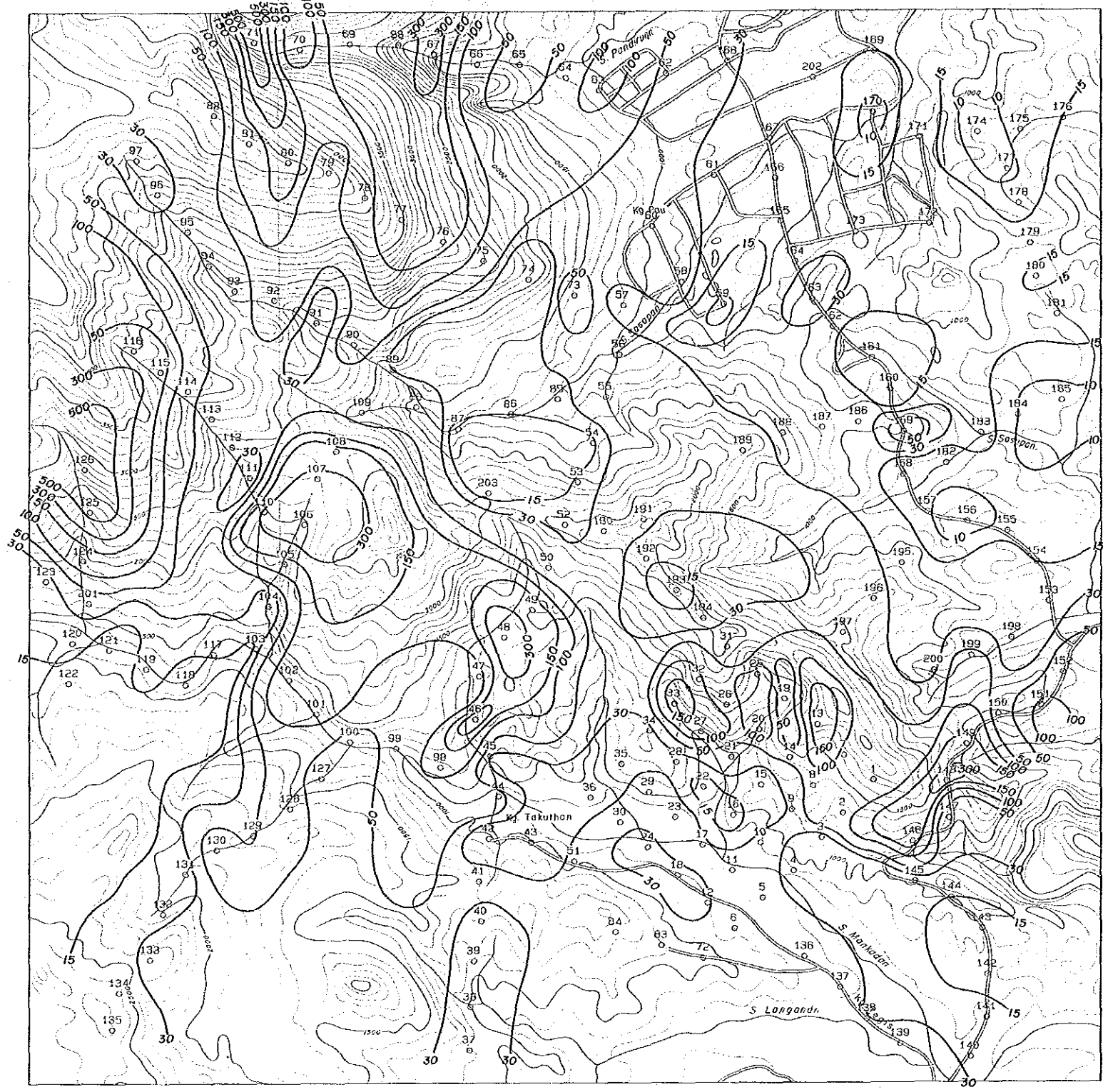
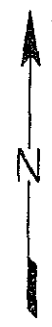


JAPAN INTERNATIONAL COOPERATION AGENCY
METAL MINING AGENCY OF JAPAN
GEOLOGICAL SURVEY OF MALAYSIA



LEGEND

- 100
○ Station and No.
- Resistivity Contour

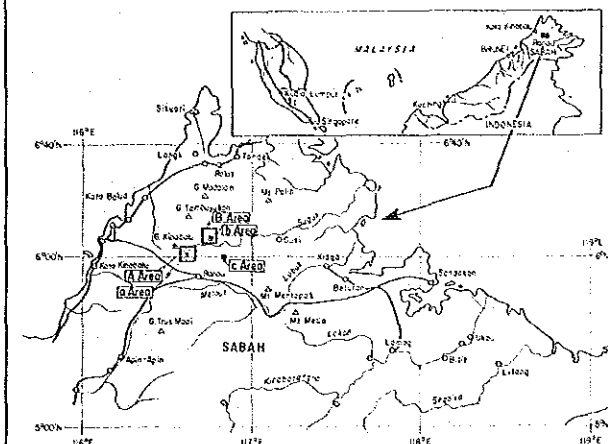


THE MINERAL EXPLORATION
IN
SABAH, MALAYSIA
PHASE I

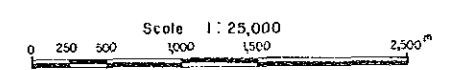
国際協力事業団
15730
調査資料図表第

Apparent Resistivity Plan Map [256Hz]
(Unit:ohm-m)

(B" Area)

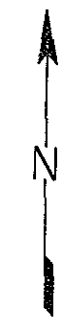
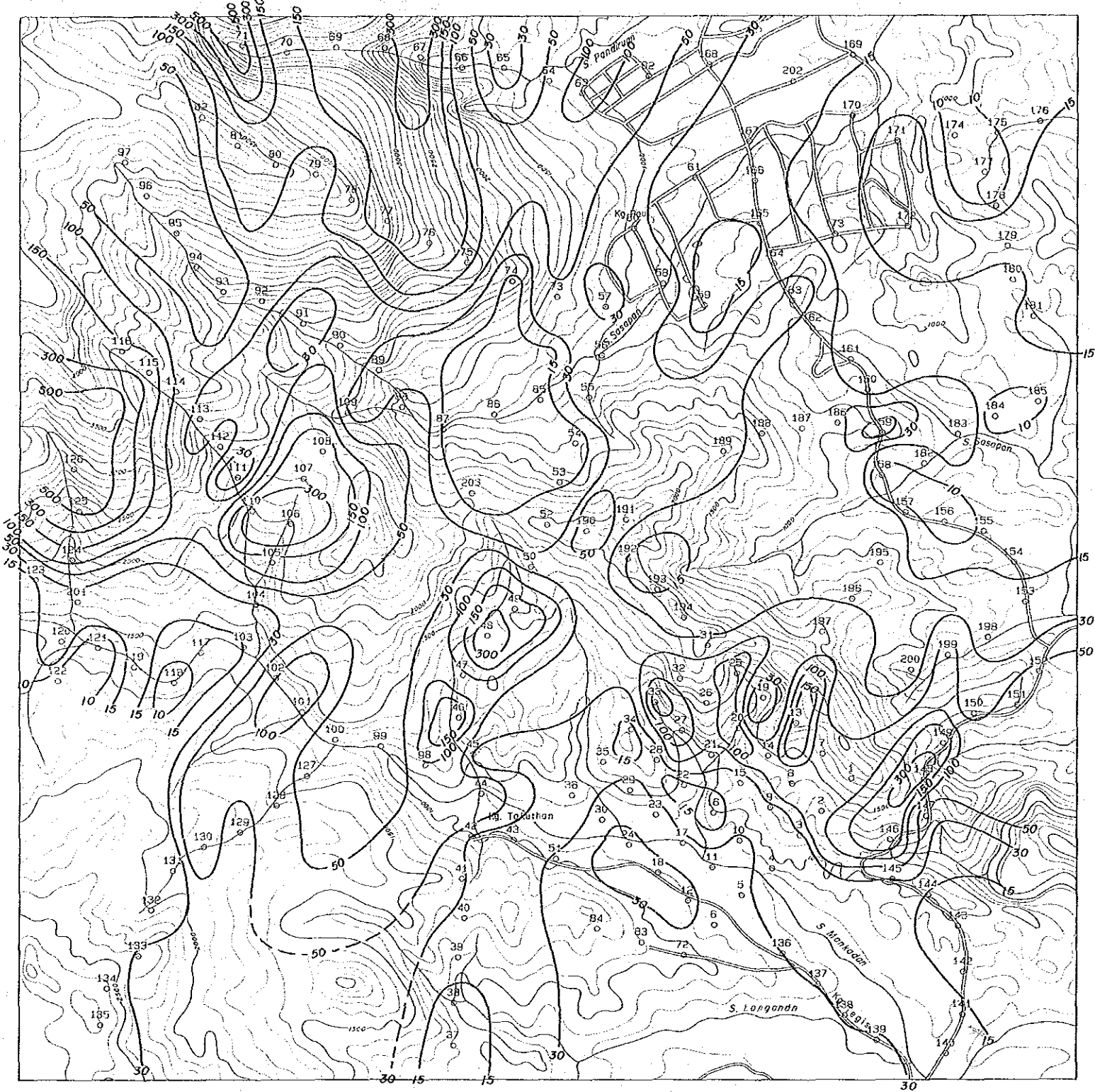


JAPAN INTERNATIONAL COOPERATION AGENCY
METAL MINING AGENCY OF JAPAN
GEOLOGICAL SURVEY OF MALAYSIA



LEGEND

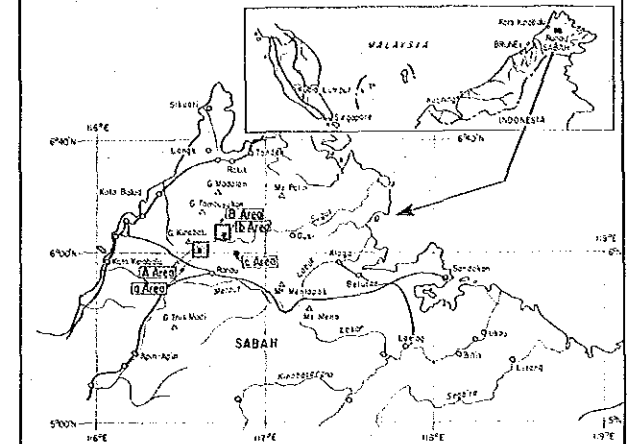
- Station and No.
- Resistivity Contour



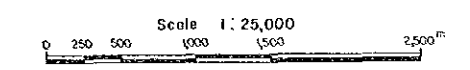
THE MINERAL EXPLORATION
IN
SABAH, MALAYSIA
PHASE I

15730
15730

Apparent Resistivity Plan Map [128Hz]
(Unit:ohm-m)
(2B" Area)

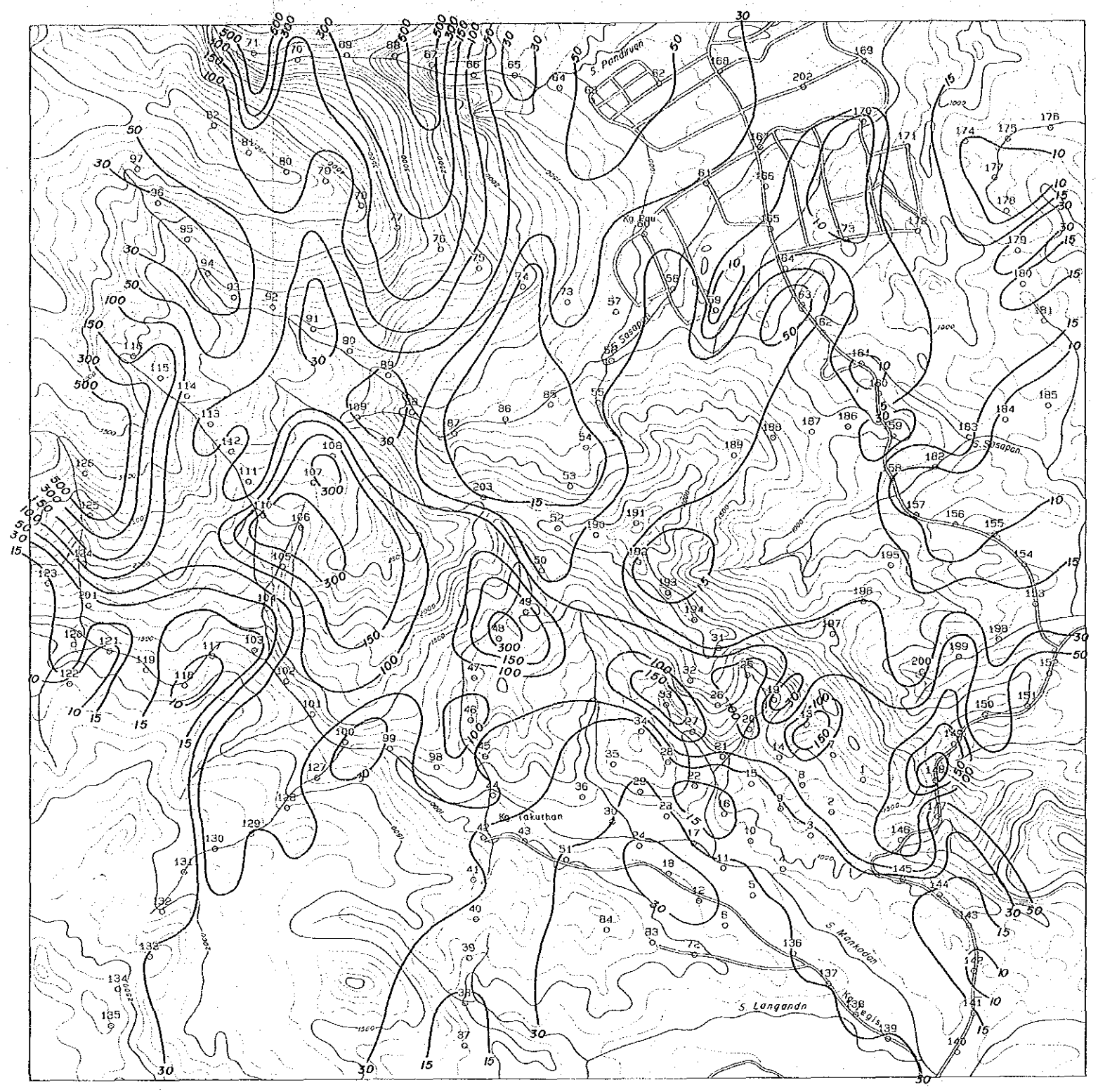
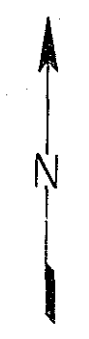


JAPAN INTERNATIONAL COOPERATION AGENCY
METAL MINING AGENCY OF JAPAN
GEOLOGICAL SURVEY OF MALAYSIA



LEGEND

- 100
○ Station end No.
- 10
20
30
Resistivity Contour

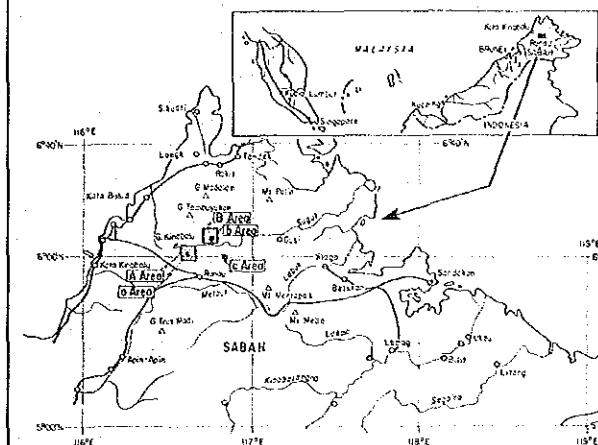


THE MINERAL EXPLORATION
IN
SABAH, MALAYSIA
PHASE I

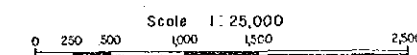
15730
15730

Apparent Resistivity Plan Map [64Hz]
(Unit: ohm-m)

(B" Area)

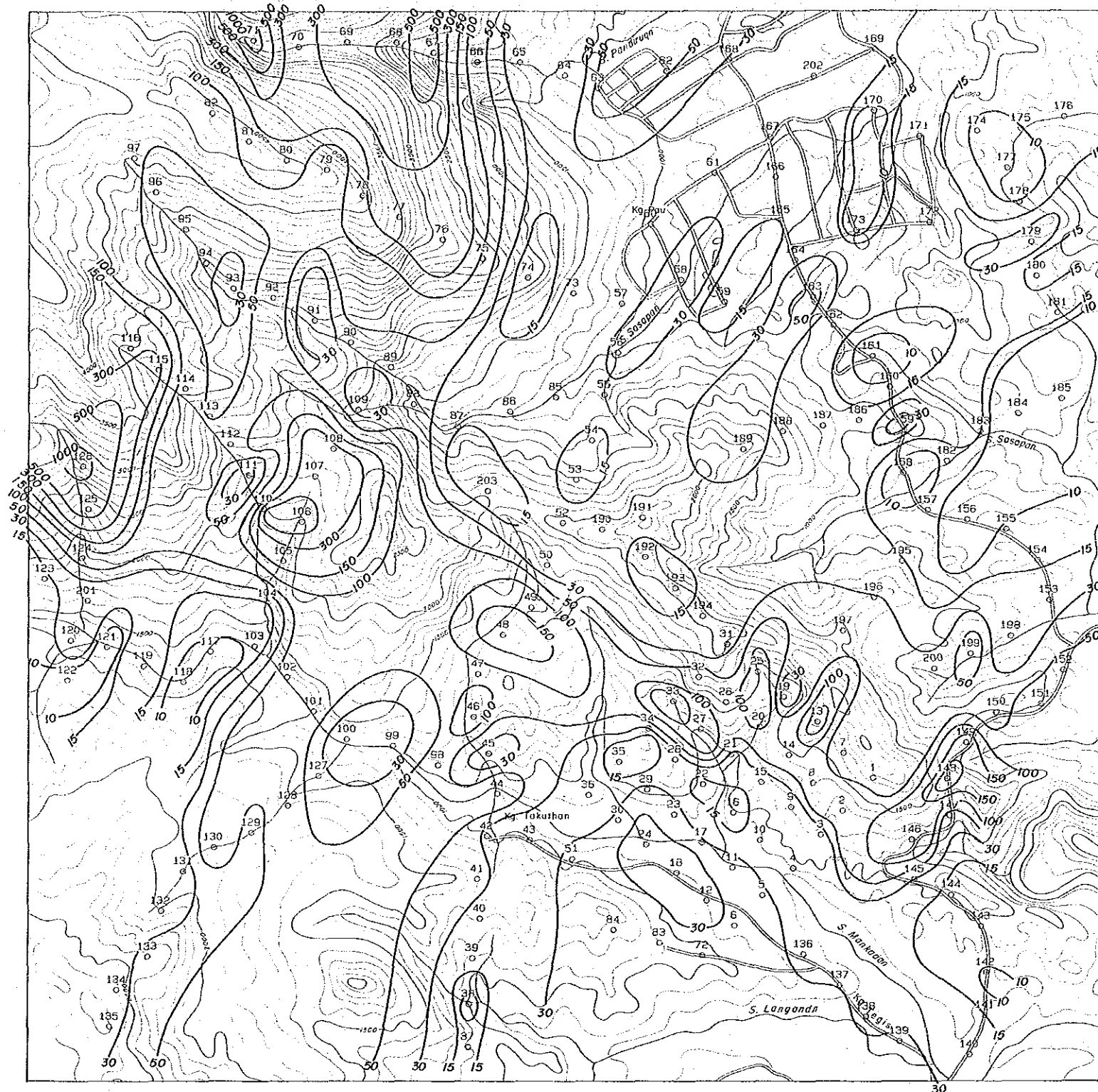


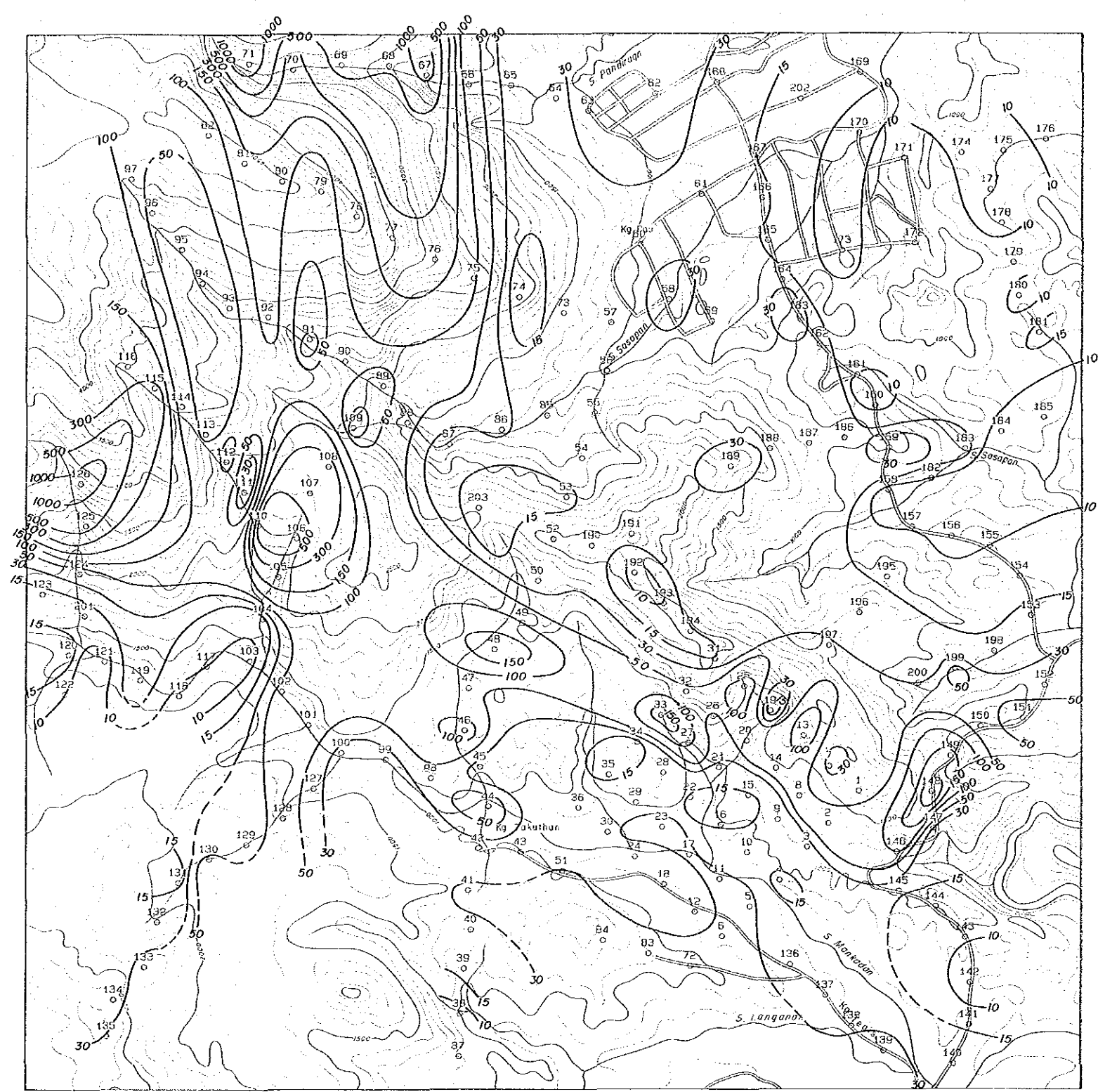
JAPAN INTERNATIONAL COOPERATION AGENCY
METAL MINING AGENCY OF JAPAN
GEOLOGICAL SURVEY OF MALAYSIA



LEGEND

- 100
○ Station and No.
- 10
20
30
40
Resistivity Contour





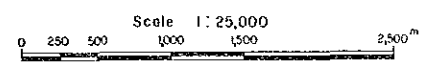
Map-50

THE MINERAL EXPLORATION
IN
SABAH, MALAYSIA
PHASE I

15730

Apparent Resistivity Plan Map [32Hz]
(Unit:ohm-m)
(1/2" Area)

JAPAN INTERNATIONAL COOPERATION AGENCY
METAL MINING AGENCY OF JAPAN
GEOLOGICAL SURVEY OF MALAYSIA



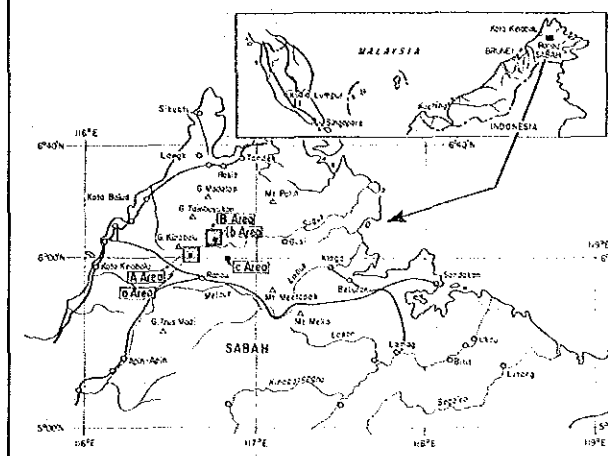
LEGEND

- 100
○ Station and No.
- Resistivity Contour

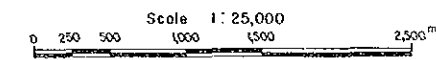
THE MINERAL EXPLORATION
IN
SABAH, MALAYSIA
PHASE I

图幅编号
15730
图式代码

Apparent Resistivity Plan Map [16Hz]
(Unit:ohm-m)
(“B” Area)

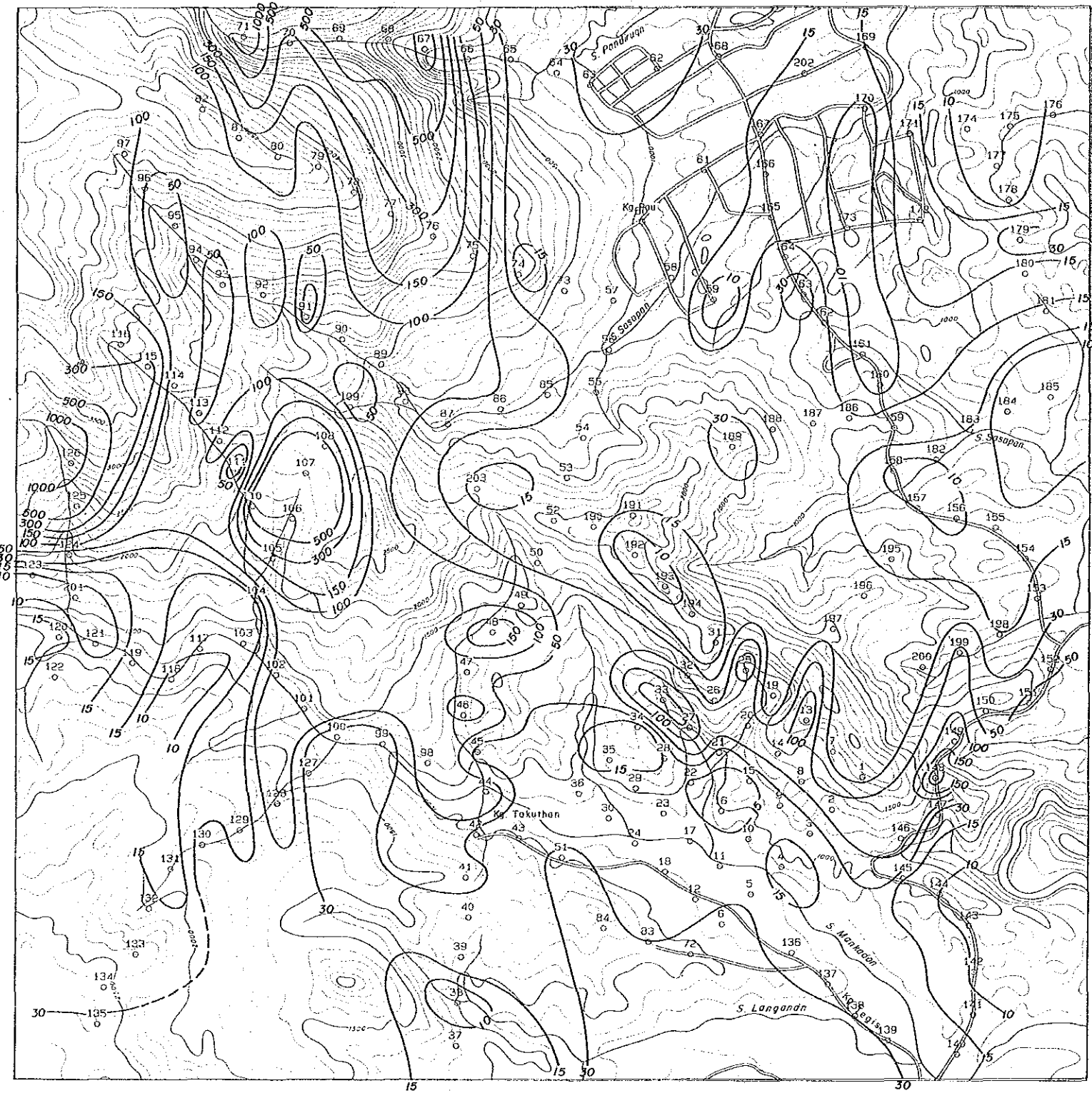


JAPAN INTERNATIONAL COOPERATION AGENCY
METAL MINING AGENCY OF JAPAN
GEOLOGICAL SURVEY OF MALAYSIA



LEGEND

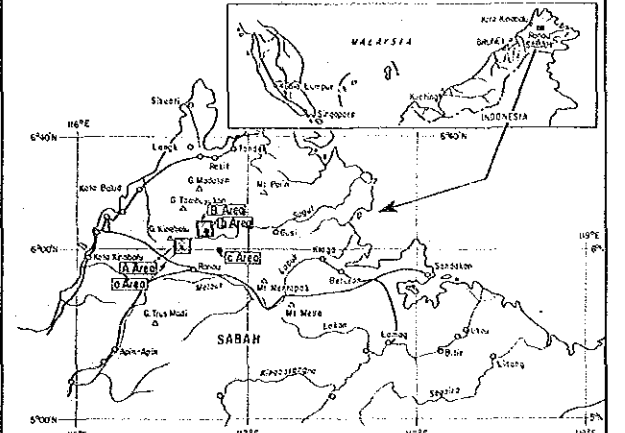
- 100
○ Station and No.
- Resistivity Contour



THE MINERAL EXPLORATION
IN
SABAH, MALAYSIA
PHASE I

国際協力機構
15730
資源探査院

Apparent Resistivity Plan Map [8Hz]
(Unit:ohm-m)
(B' Area)

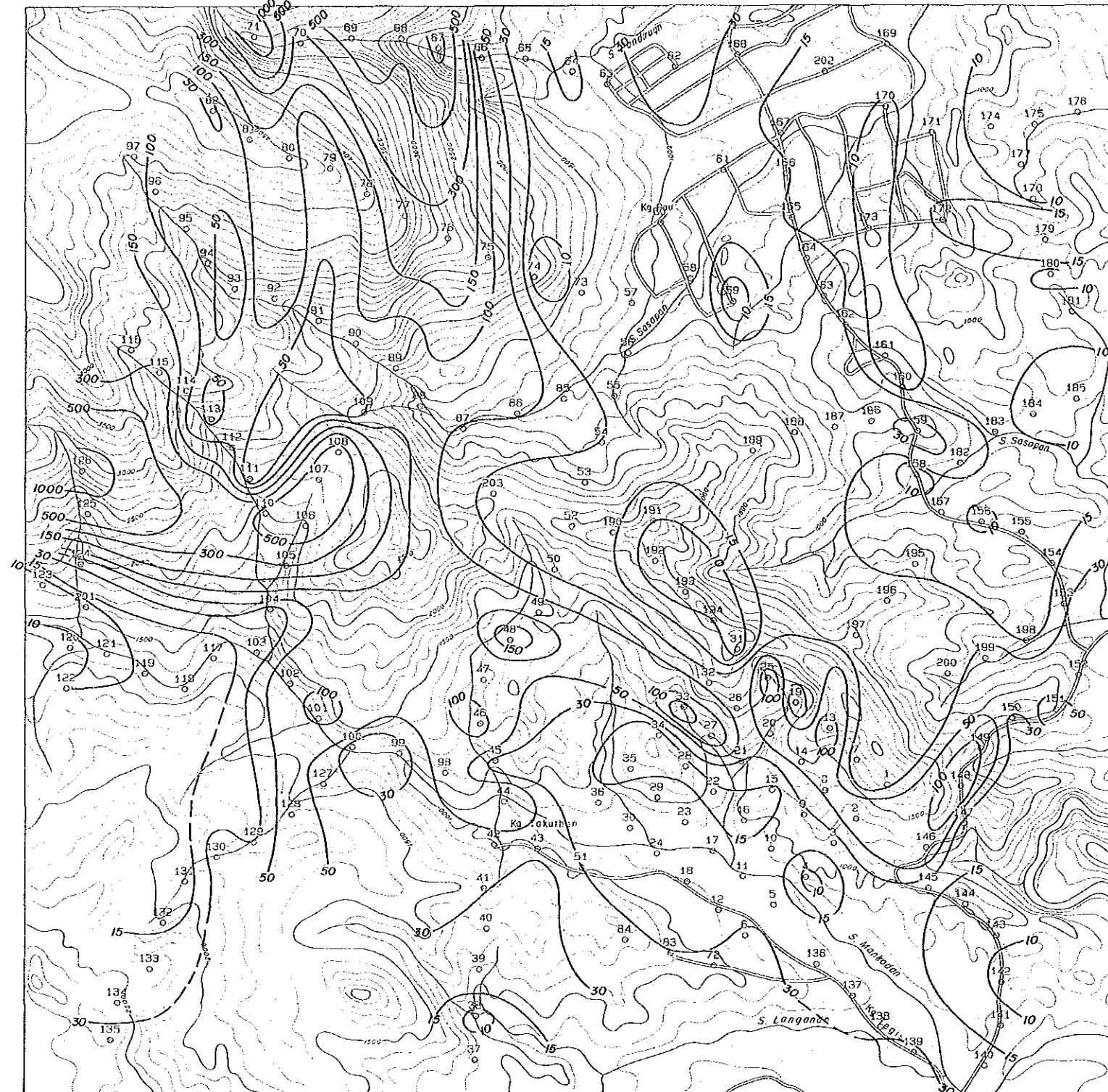


JAPAN INTERNATIONAL COOPERATION AGENCY
METAL MINING AGENCY OF JAPAN
GEOLOGICAL SURVEY OF MALAYSIA

Scale 1:25,000
0 250 500 1000 1500 2500m

LEGEND

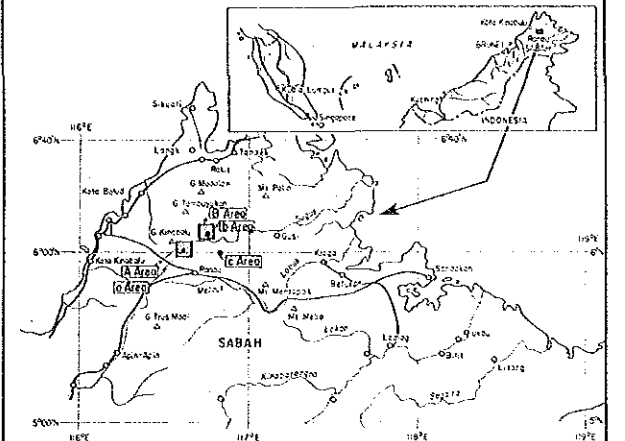
- 100
○ Station and No.
- 10
30
50
○ Resistivity Contour



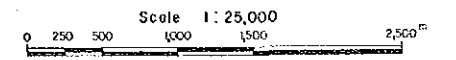
THE MINERAL EXPLORATION
IN
SABAH, MALAYSIA
PHASE I

国産鉄力米等用
15730
国産鉄力米等用

Apparent Resistivity Plan Map [4Hz]
(Unit:ohm-m)
(B" Area)

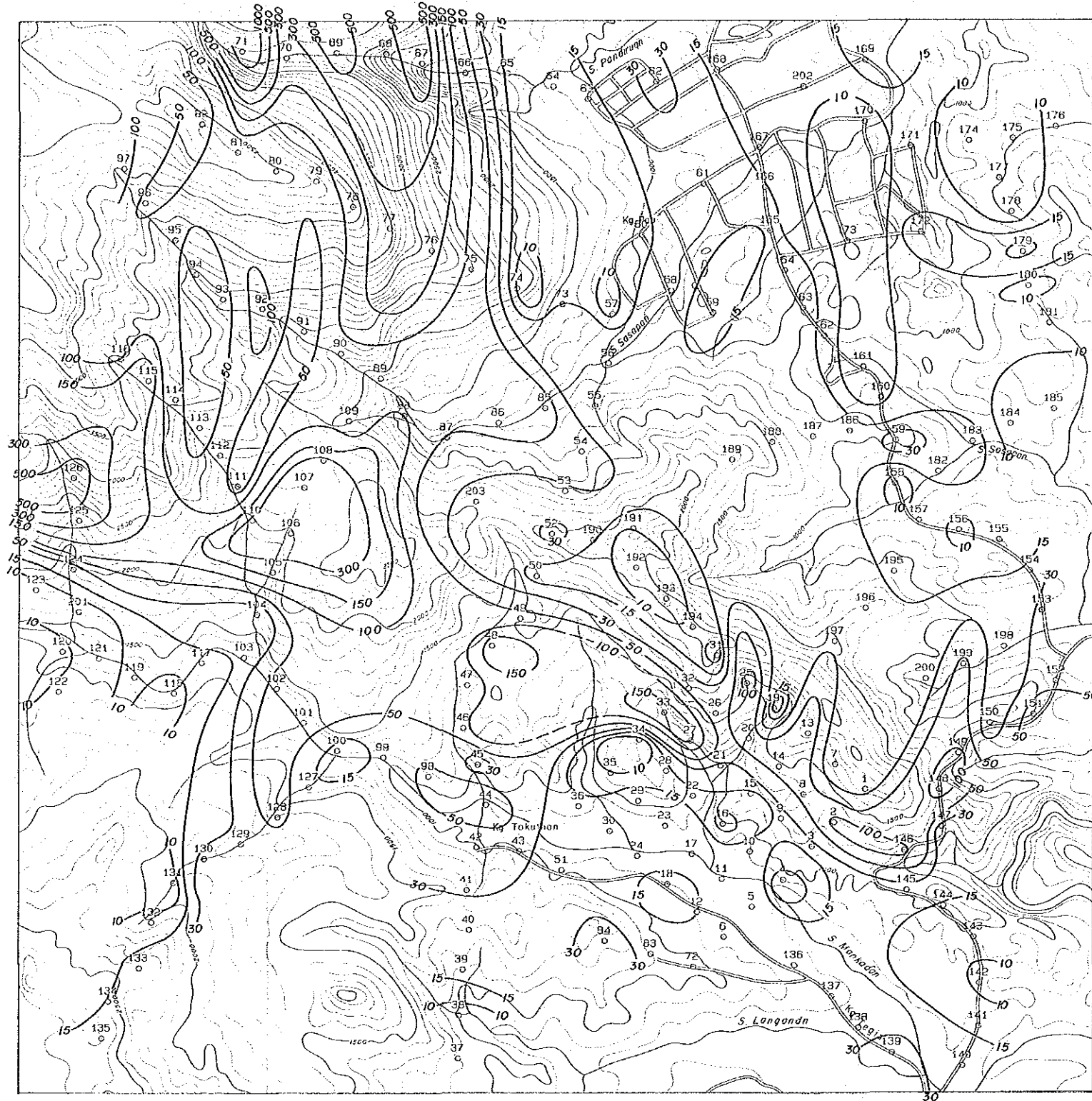
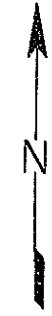


JAPAN INTERNATIONAL COOPERATION AGENCY
METAL MINING AGENCY OF JAPAN
GEOLOGICAL SURVEY OF MALAYSIA



LEGEND

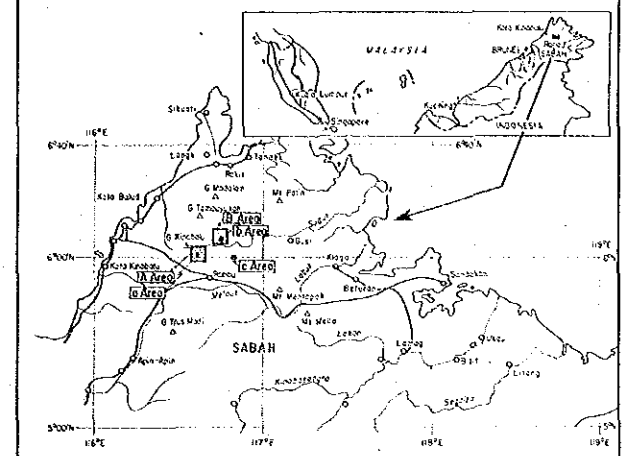
- 100
○ Station and No.
- 10
20
30
Resistivity Contour



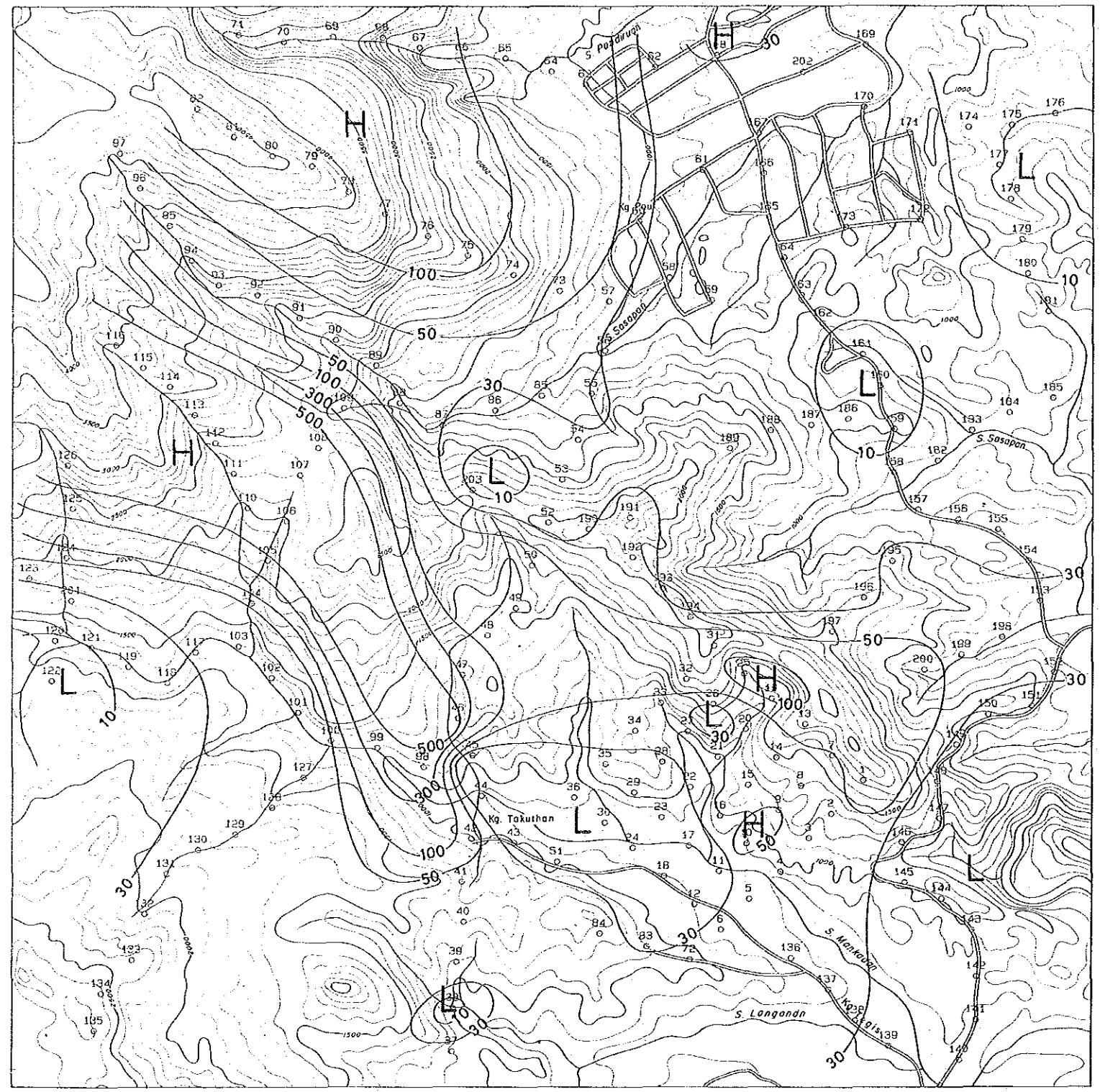
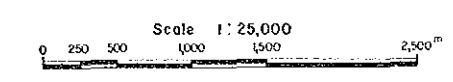
THE MINERAL EXPLORATION
IN
SABAH, MALAYSIA
PHASE I

15730

Resistivity Structural Map [50m]
(Unit:ohm-m)
(2B" Area)



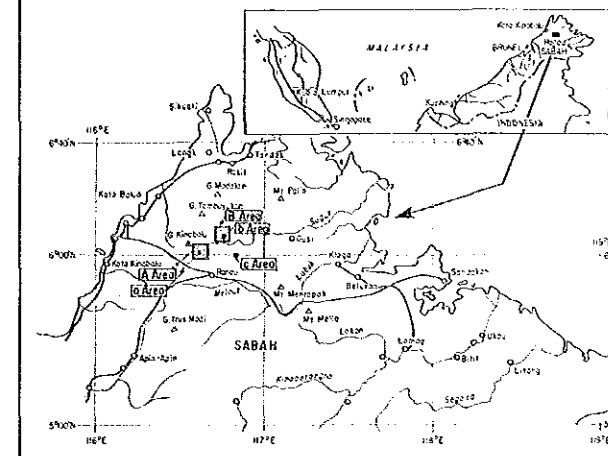
JAPAN INTERNATIONAL COOPERATION AGENCY
METAL MINING AGENCY OF JAPAN
GEOLOGICAL SURVEY OF MALAYSIA



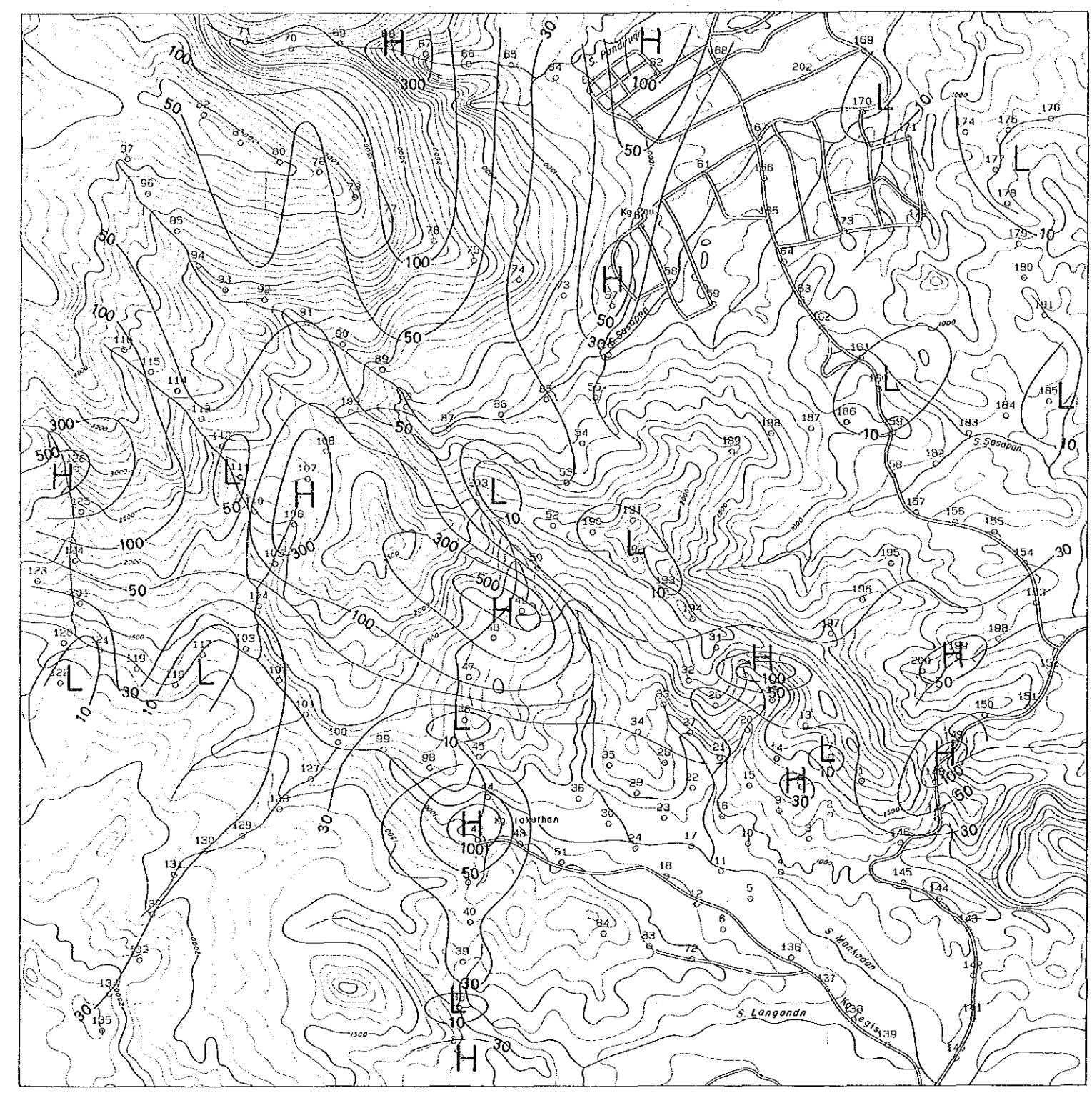
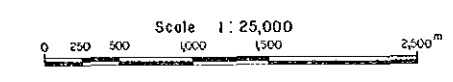
THE MINERAL EXPLORATION
IN
SABAH, MALAYSIA
PHASE I

15730

Resistivity Structural Map [150m]
(Unit:ohm-m)
(3" Area)



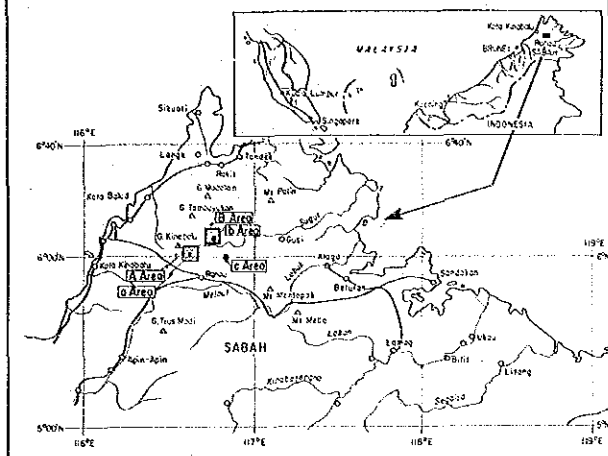
JAPAN INTERNATIONAL COOPERATION AGENCY
METAL MINING AGENCY OF JAPAN
GEOLOGICAL SURVEY OF MALAYSIA



THE MINERAL EXPLORATION
IN
SABAH, MALAYSIA
PHASE I

15730
圖書資料室

Resistivity Structural Map (200m)
(Unit:ohm-m)
(“B” Area)



JAPAN INTERNATIONAL COOPERATION AGENCY
METAL MINING AGENCY OF JAPAN
GEOLOGICAL SURVEY OF MALAYSIA

