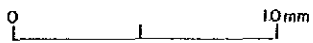




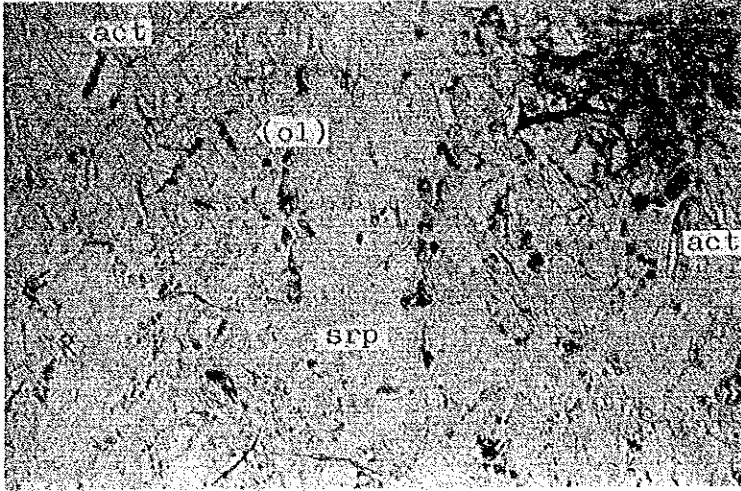
Only lower polar



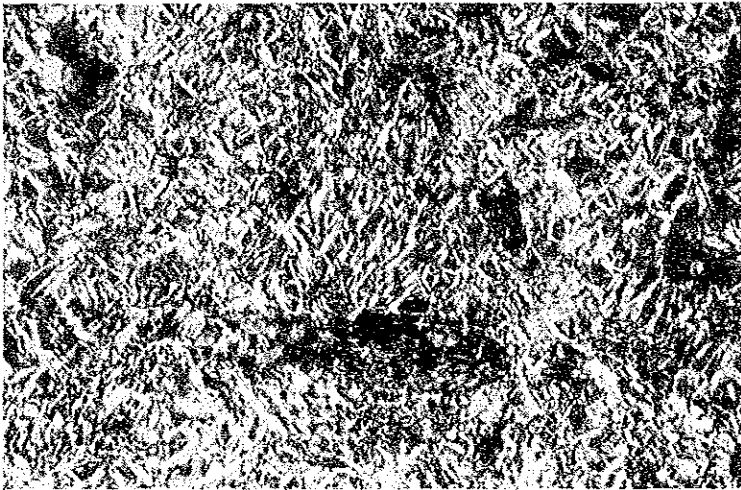
Crossed polars



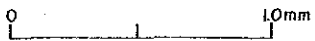
Sample No. : S-29
Location : B08-09 ("b" Area)
Rock name : harzburgite



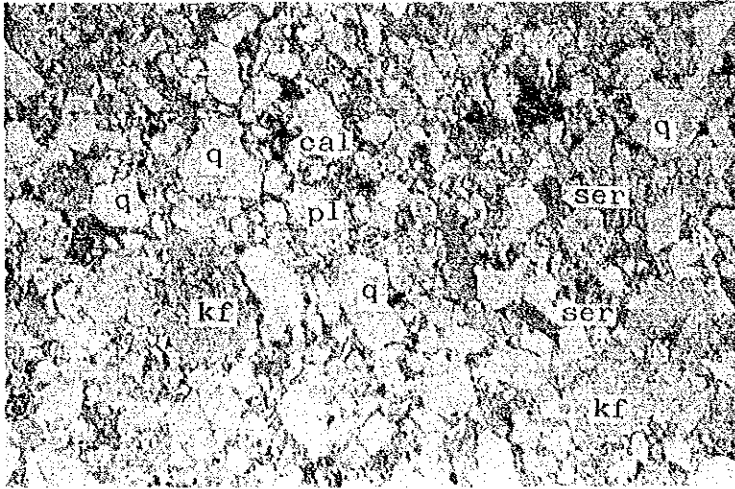
Only lower polar



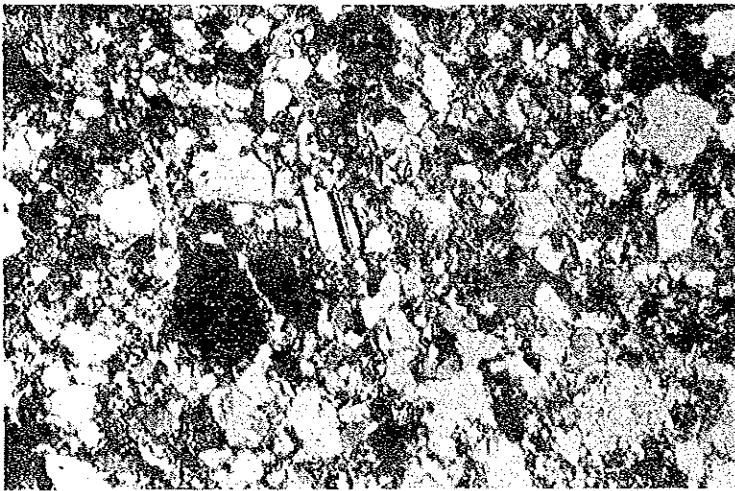
Crossed polars



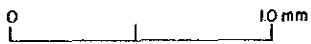
Sample No. : Y-43
Location : B37-05 ("b" Area)
Rock name : harzburgite



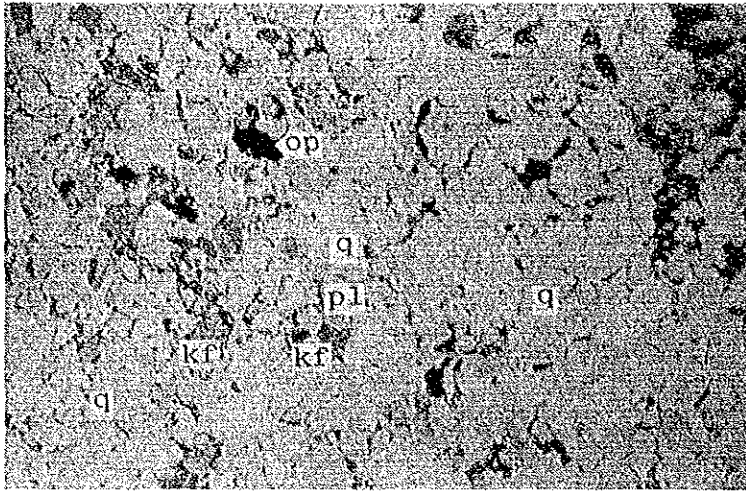
Only lower polar



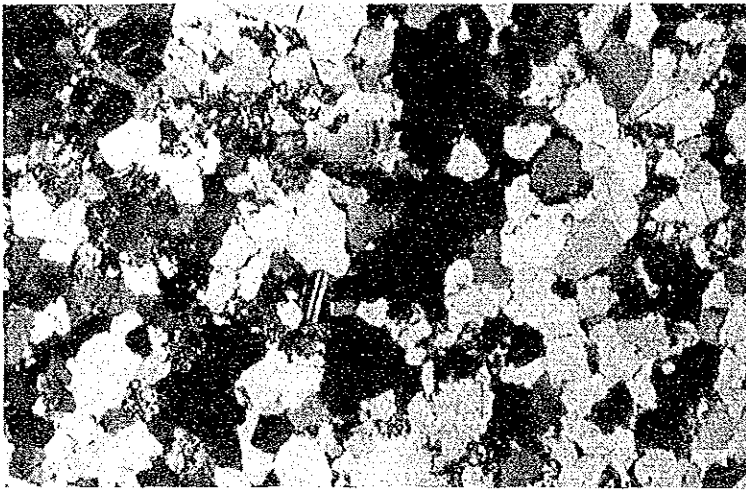
Crossed polars



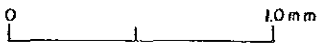
Sample No. : Y-49
Location : B26-23 ("b" Area)
Rock name : sandstone



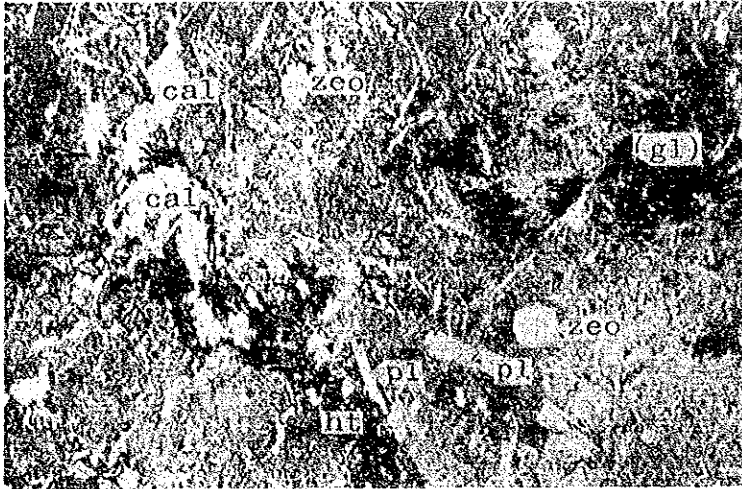
Only lower polar



Crossed polars



Sample No. : F-01
Location : B28-23 ("b" Area)
Rock name : sandstone



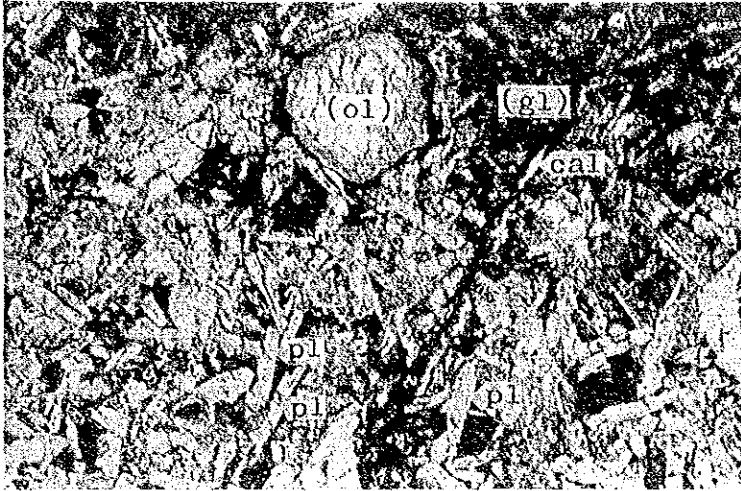
Only lower polar



Crossed polars

0 10 mm

Sample No. : Y-23
Location : 110m north of B19-01 ("b" Area)
Rock name : basalt



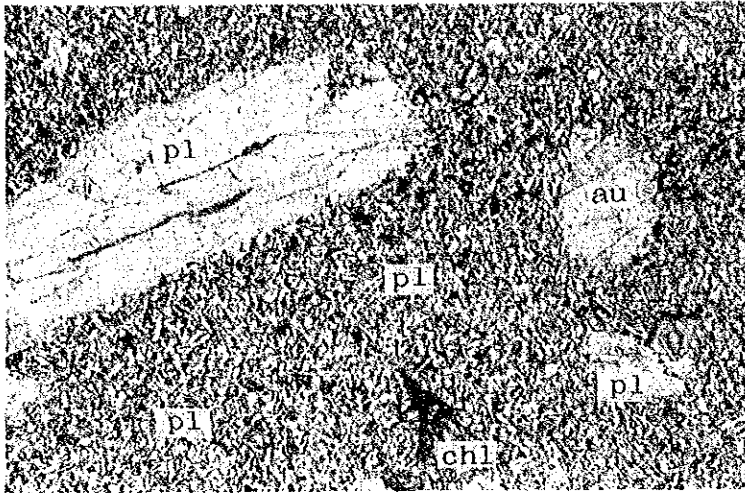
Only lower polar



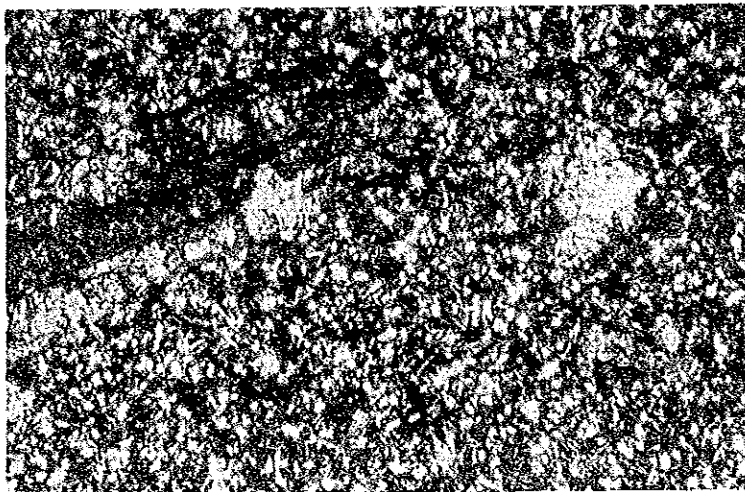
Crossed polars



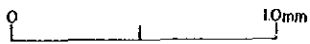
Sample No. : T-31
Location : 70m north of B36-01 ("b" Area)
Rock name : dolerite



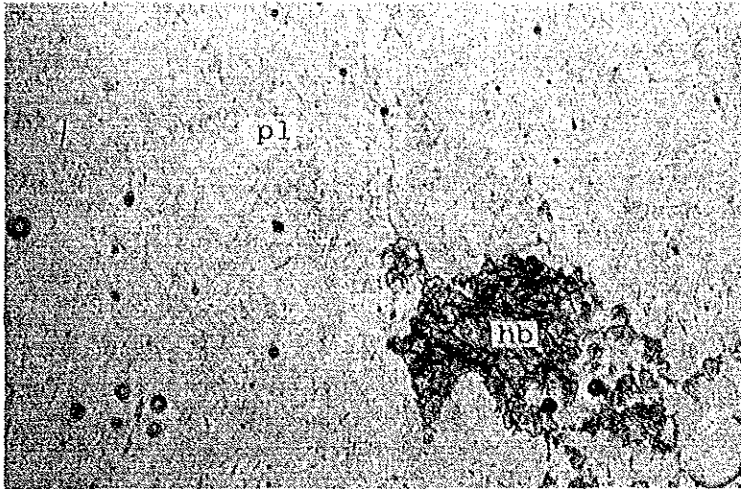
Only lower polar



Crossed polars



Sample No. : S-22
Location : B30-01 ("b" Area)
Rock name : basalt



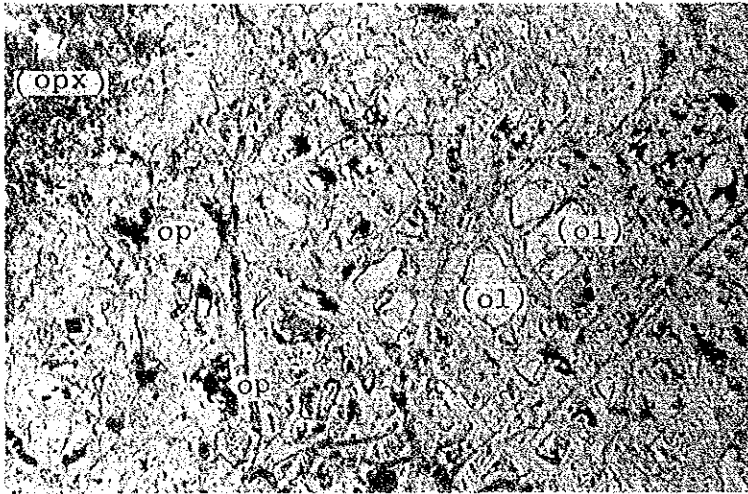
Only lower polar



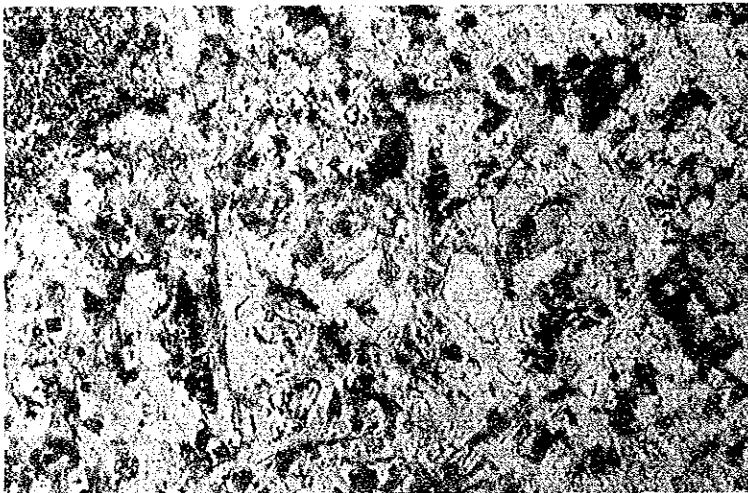
Crossed polars

0 1.0mm

Sample No. : T-20
Location : B51-01 ("b" Area)
Rock name : pegmatite



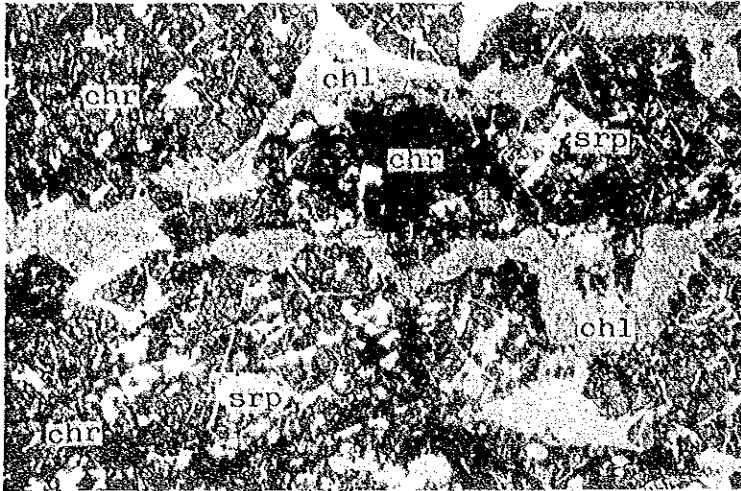
Only lower polar



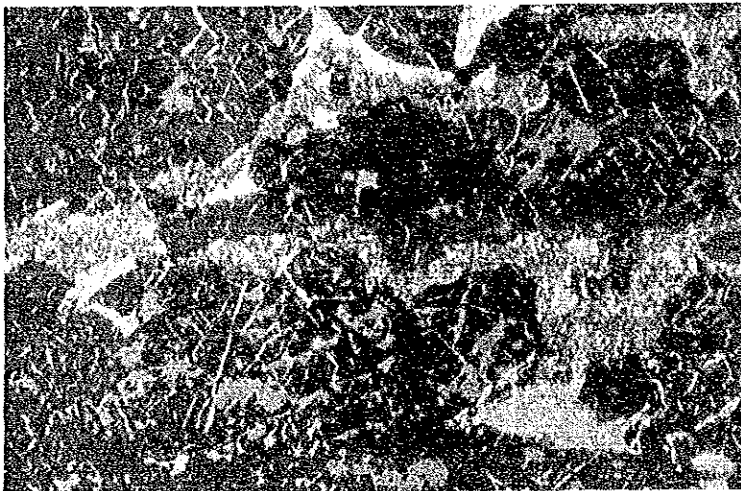
Crossed polars

0 10 mm

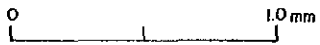
Sample No. : Y-28
Location : B29-25 ("b" Area)
Rock name : harzburgite



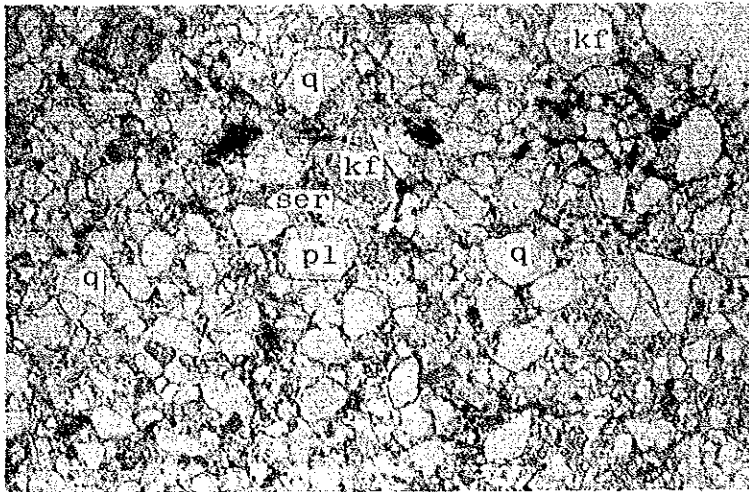
Only lower polar



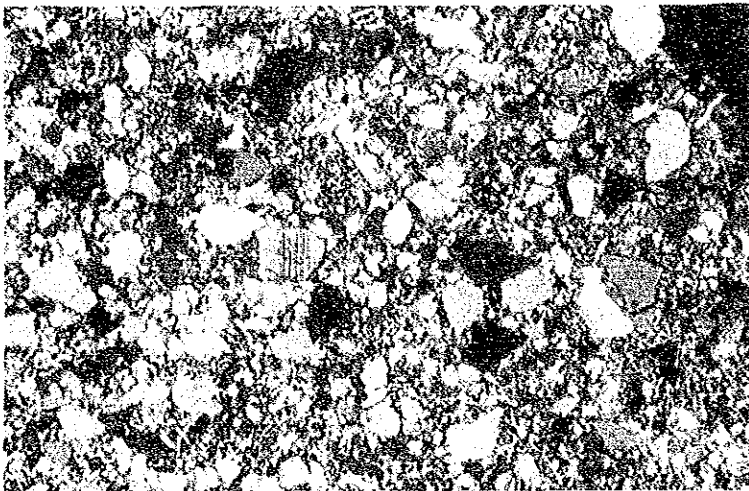
Crossed polars



Sample No. : Y-52
Location : B06-05 ("b" Area)
Rock name : chromite ore



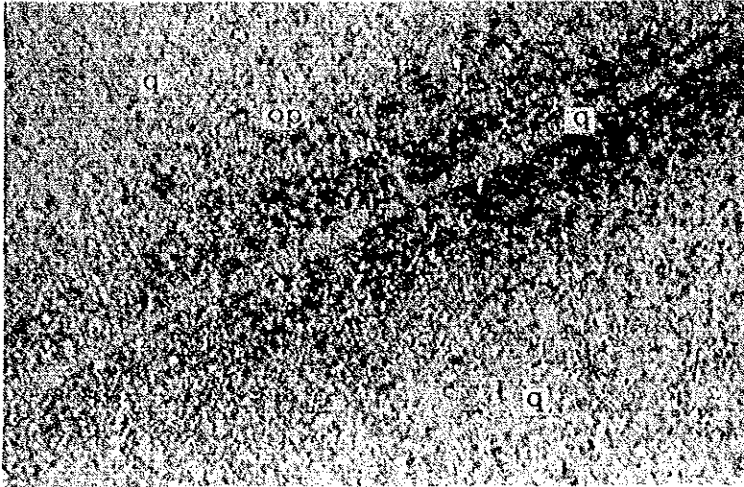
Only lower polar



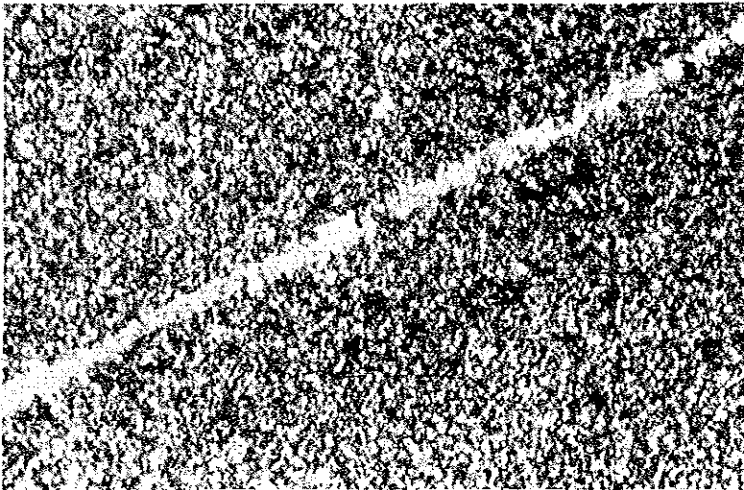
Crossed polars



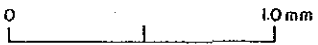
Sample No. : T-07
Location : C37-41 ("c" Area)
Rock name : sandstone



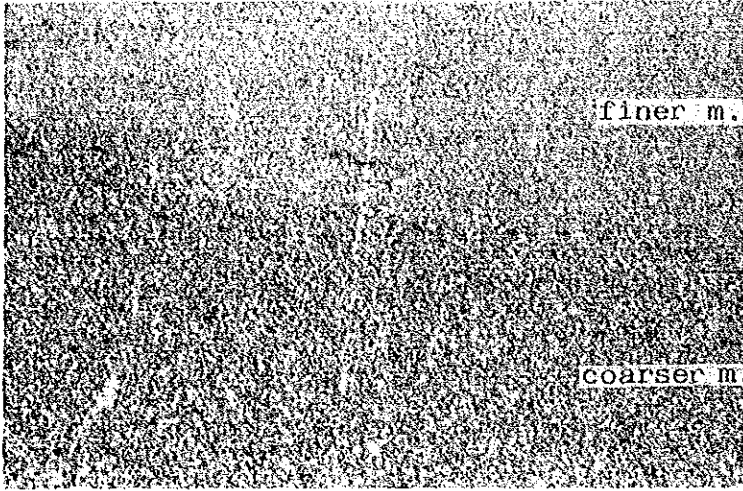
Only lower polar



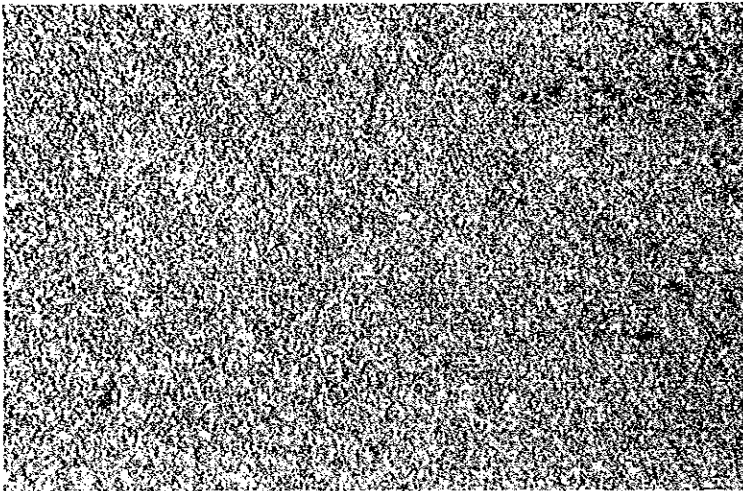
Crossed polars



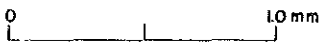
Sample No. : Y-18
Location : C39-22 ("c" Area)
Rock name : siltstone



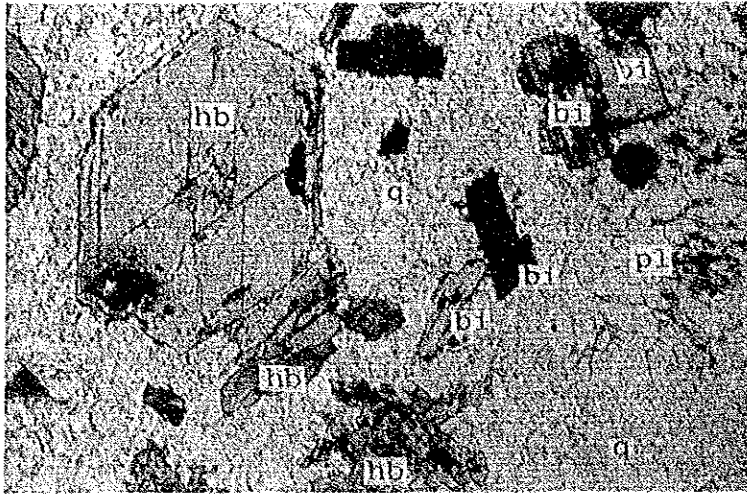
Only lower polar



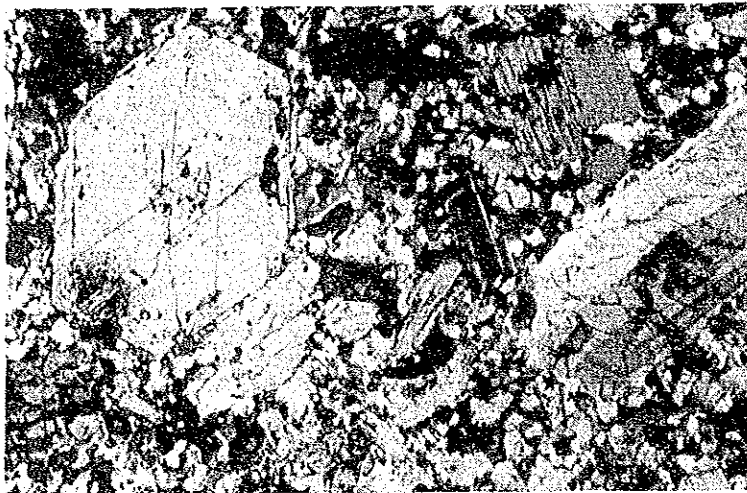
Crossed polars



Sample No. : T-08
Location : C33-41 ("c" Area)
Rock name : mudstone



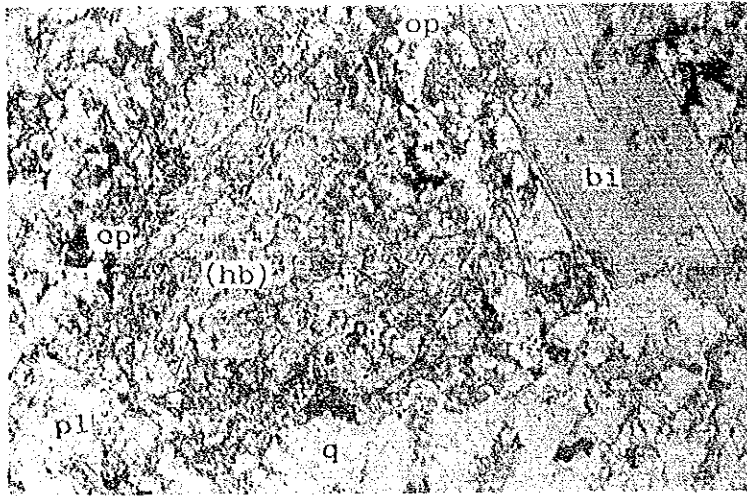
Only lower polar



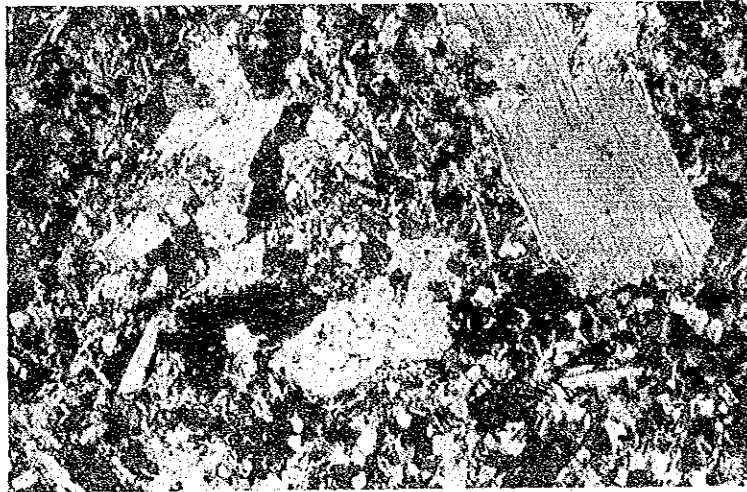
Crossed polars



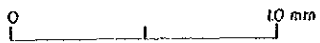
Sample No. : Y-17
Location : C40-25 ("c" Area)
Rock name : granodiorite porphyry



Only lower polar



Crossed polars

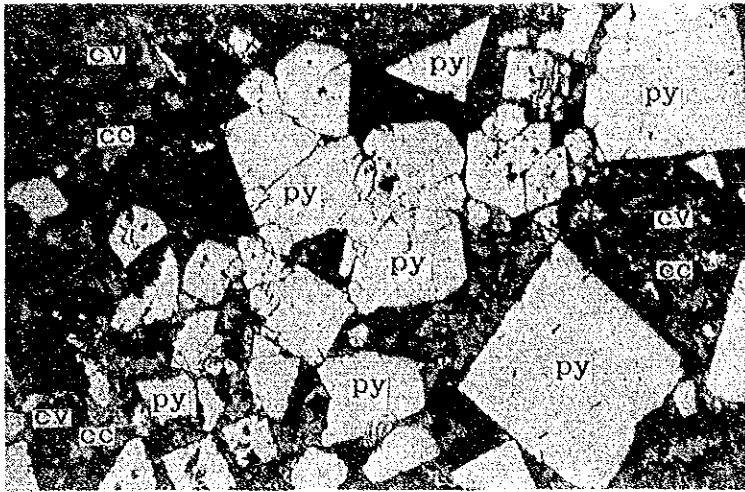


Sample No. : T-04
Location : C36-08 ("c" Area)
Rock name : granodiorite porphyry

A-2 **Microphotograph of Polished Sections**

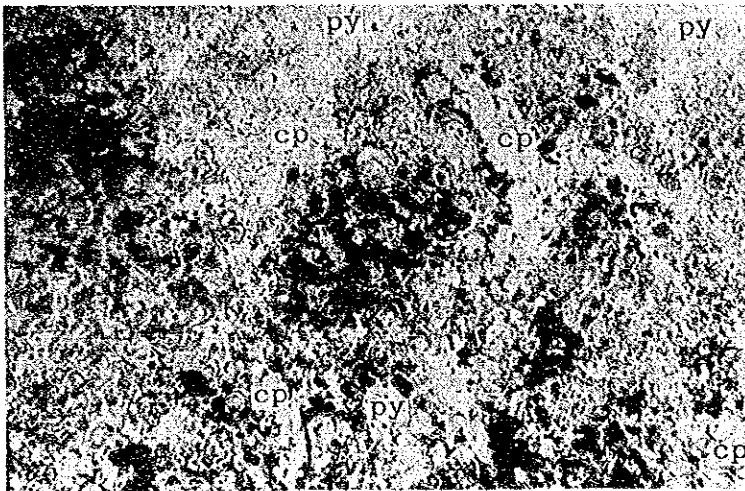
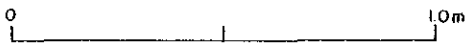
Abbreviation

py : pyrite
cp : chalcopyrite
bo : bornite
cc : chalcocite
cv : covellite
sph : sphalerite
gl : galena
chr : chromite
pyr : pyrrhotite
ars : arsenopyrite
mt : magnetite
ht : hematite
lim : limonite



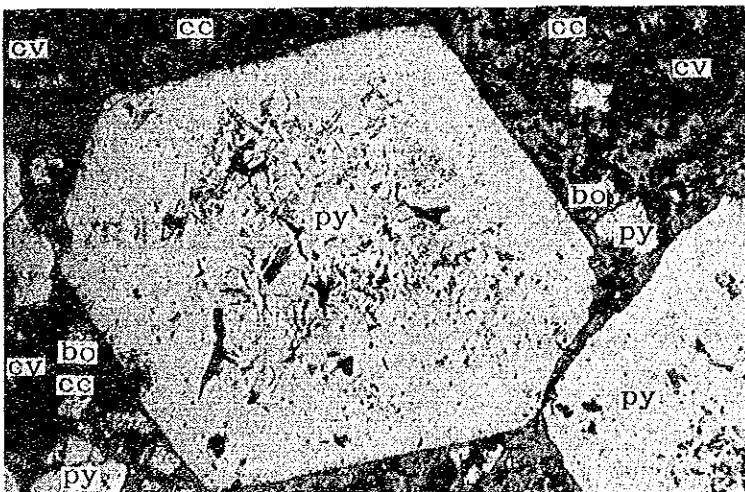
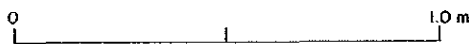
Sample No. : Y-50
 Location : B23-19 ("b" Area)
 Specimen : cupriferos secondary sulfide ore

only lower polar



Sample No. : Y-31
 Location : B23-19 ("b" Area)
 Specimen : cupriferos sulfide ore

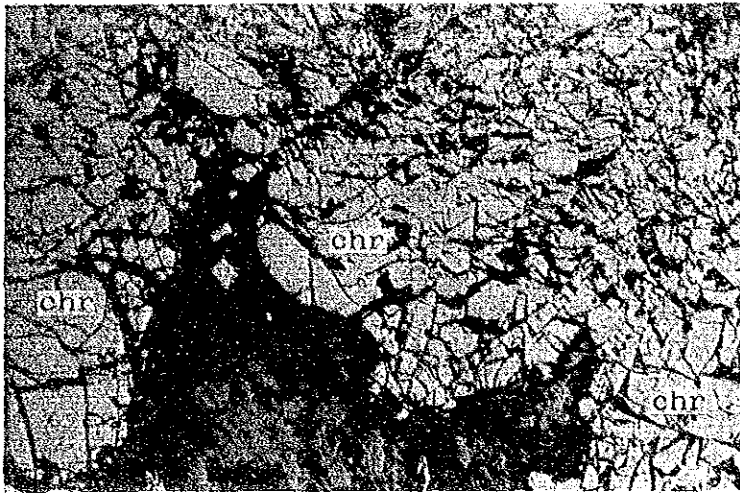
only lower polar



Sample No. : Y-51
 Location : B23-19 ("b" Area)
 Specimen : cupriferos secondary sulfide ore

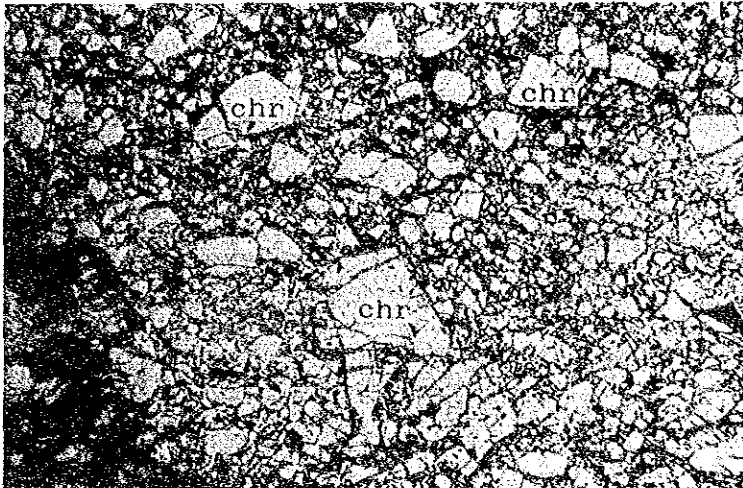
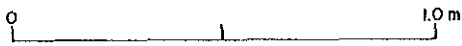
only lower polar





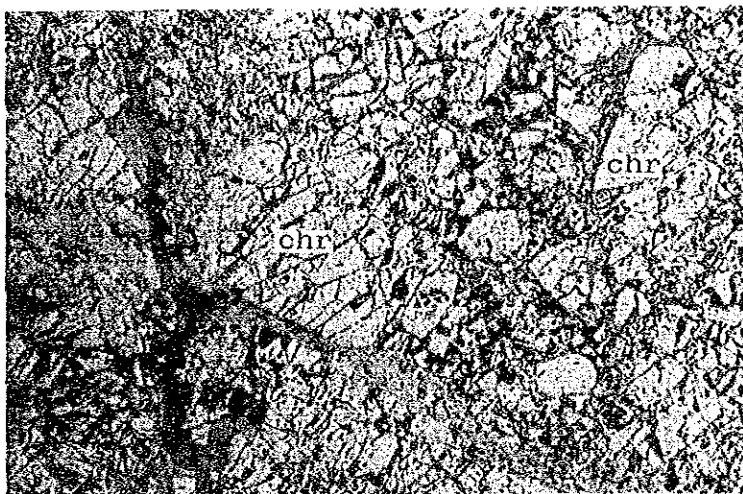
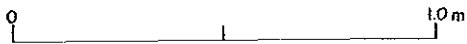
Sample No. : Y-52 (1)
Location : B06-05 ("b" Area)
Specimen : chromite ore

only lower polar



Sample No. : Y-52 (2)
Location : B06-05 ("b" Area)
Specimen : chromite ore

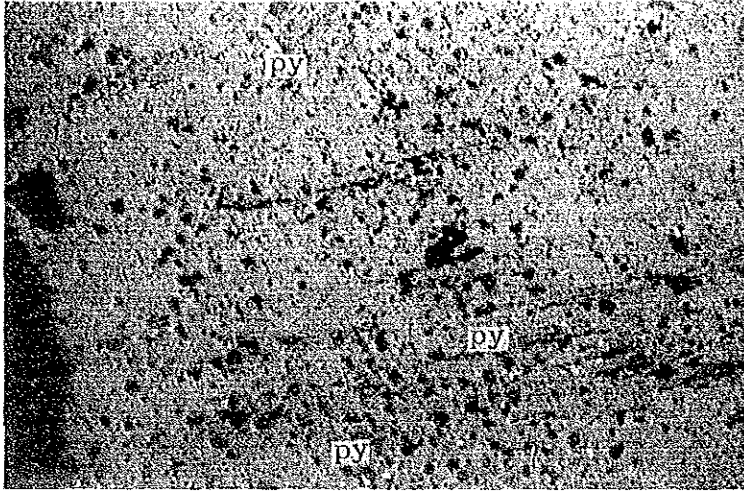
only lower polar



Sample No. : T-34
Location : B05-05 ("b" Area)
Specimen : chromite ore

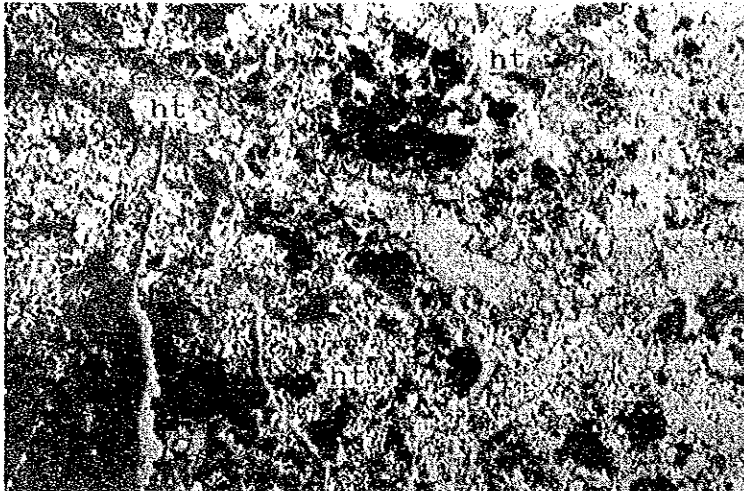
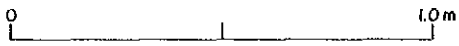
only lower polar





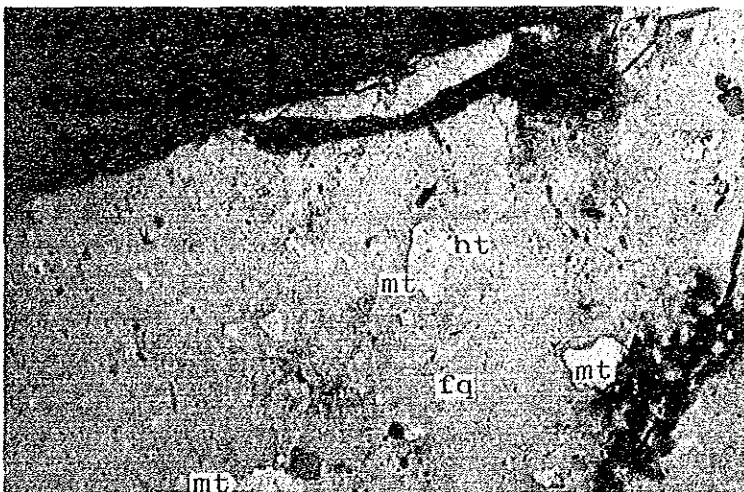
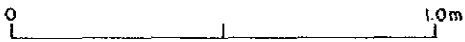
Sample No. : Y-40
Location : B40-23 ("b" Area)
Specimen : iron oxide ore

only lower polar



Sample No. : Y-27
Location : B32-28 ("b" Area)
Specimen : iron oxide ore

only lower polar



Sample No. : T-36
Location : B03-03 ("b" Area)
Specimen : iron oxide ore

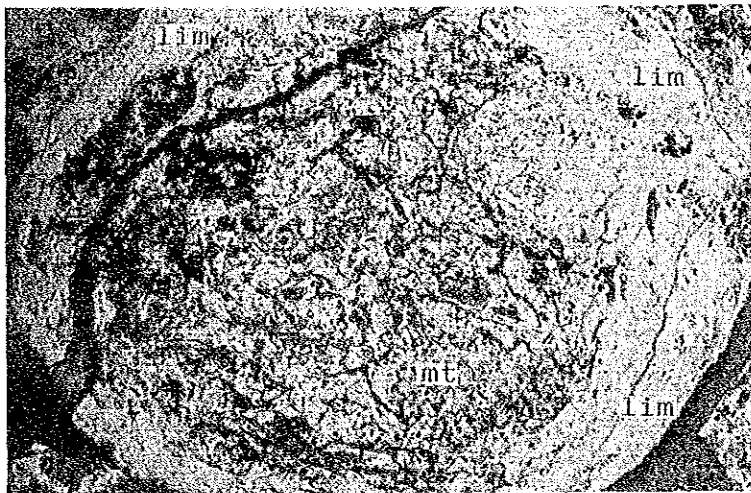
only lower polar





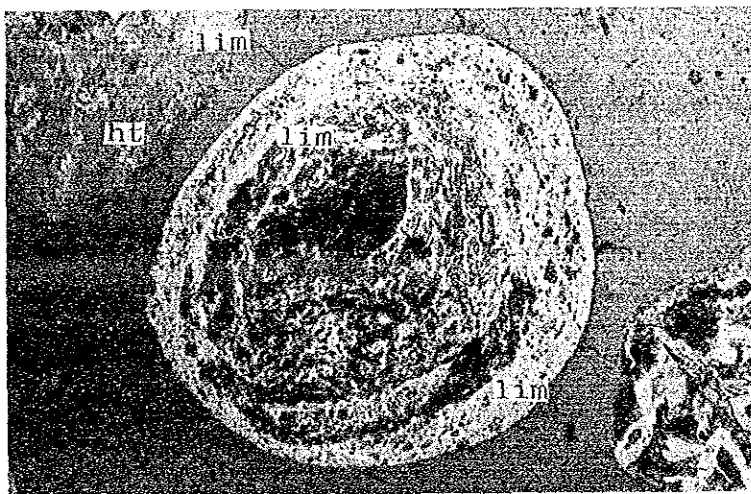
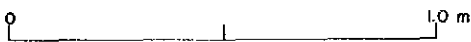
Sample No. : T-36
 Location : B03-03 ("b" Area)
 Specimen : iron oxide ore

only lower polar



Sample No. : Y-21
 Location : B32-19 ("b" Area)
 Specimen : iron oxide ore

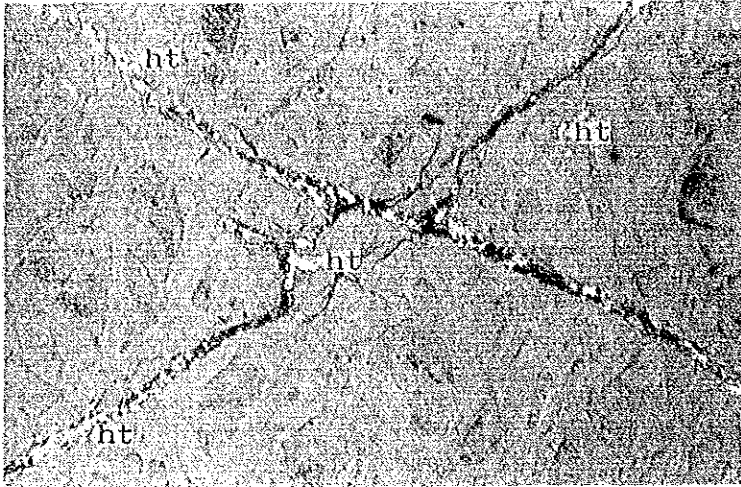
only lower polar



Sample No. : S-28
 Location : B08-10 ("b" Area)
 Specimen : iron oxide ore

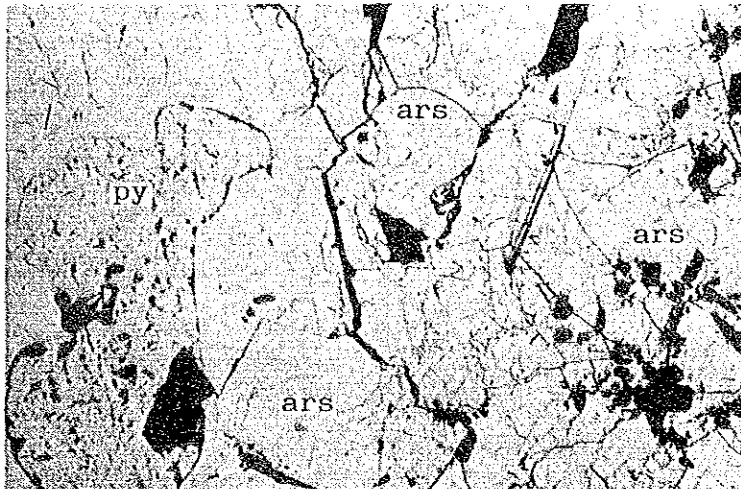
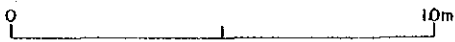
only lower polar





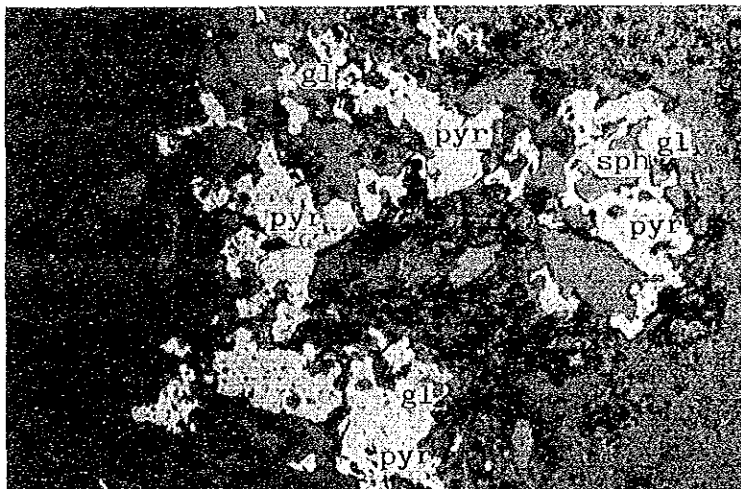
Sample No. : Y-45
 Location : B26-18 ("b" Area)
 Specimen : hematite-quartz stringer

only lower polar



Sample No. : Y-20
 Location : C23-17 ("c" Area)
 Specimen : arsenopyrite ore

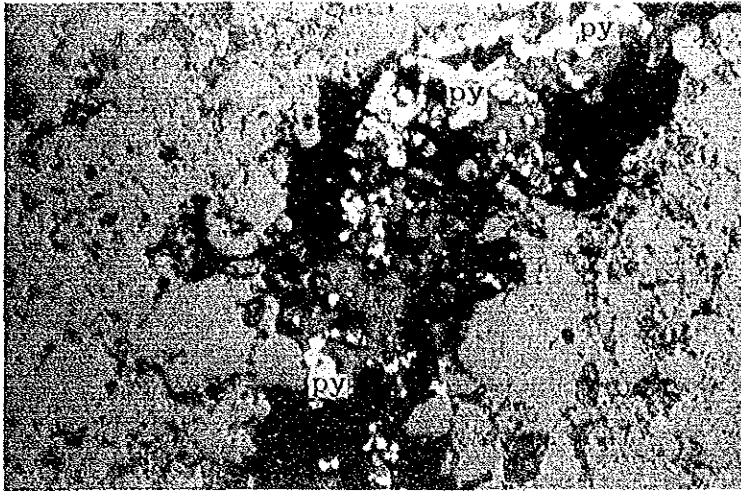
only lower polar



Sample No. : Y-14
 Location : C14-07 ("c" Area)
 Specimen : granodiorite porphyry

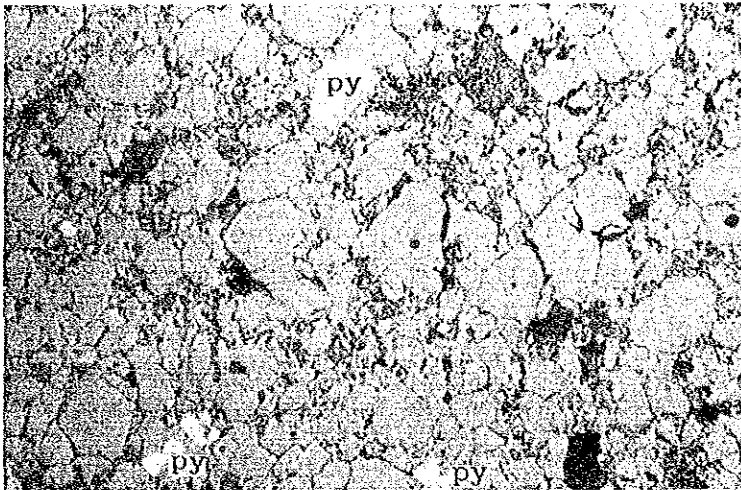
only lower polar





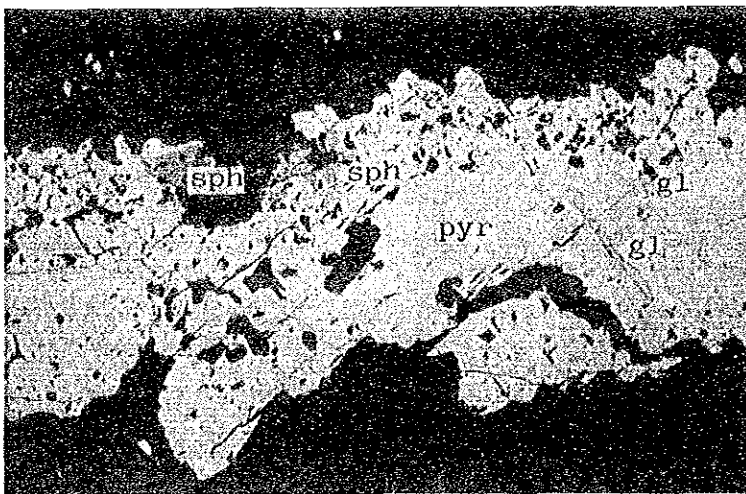
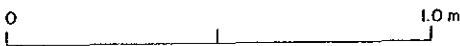
Sample No. : Y-12
 Location : C08-13 ("c" Area)
 Specimen : granodiorite porphy

only lower polar



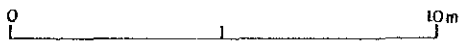
Sample No. : Y-07
 Location : C37-10 ("c" Area)
 Specimen : sandstone

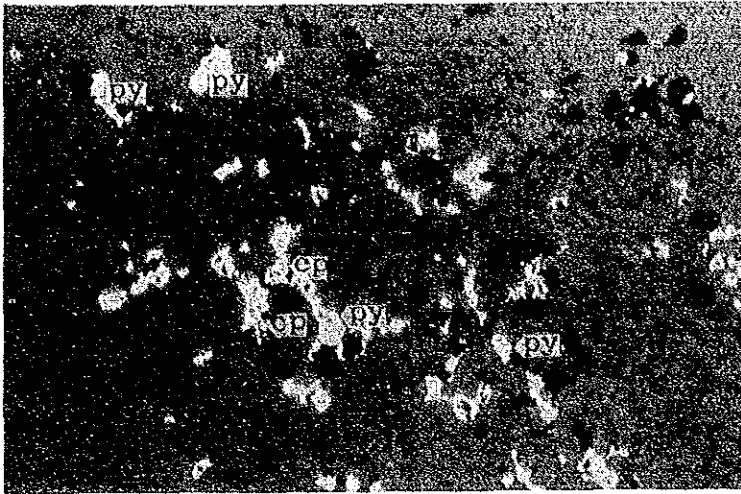
only lower polar



Sample No. : S-20
 Location : C14-09
 Specimen : pyrrhotite stringer

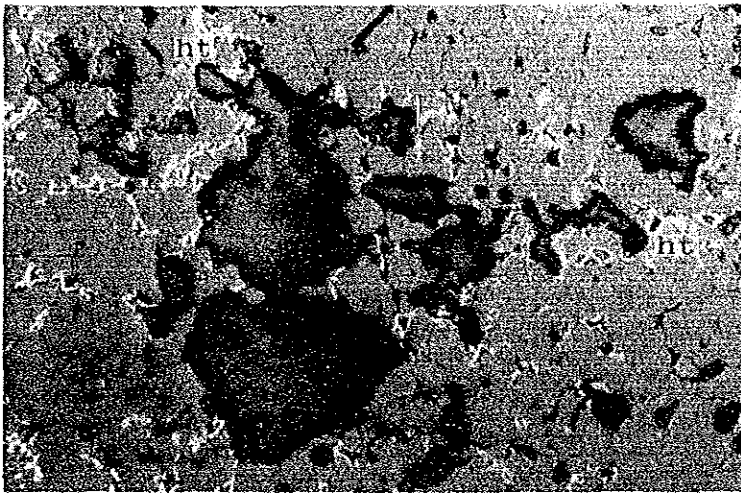
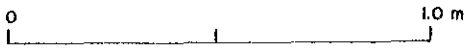
only lower polar





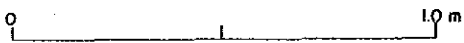
Sample No. : T-06
Location : C39-16 ("c" Area)
Specimen : sandstone

only lower polar



Sample No. : Y-09
Location : C37-13 ("c" Area)
Specimen : hematite ore

only lower polar



A-4 Result of Polished Section Examination

Serial No.	Sample No.	Location	Specimen	Ore Minerals														Remarks
				pyrite	chalcopyrite	bornite	chalcocite	covellite	sphalerite	galena	chromite	pyrrhotite	arsenopyrite	magnetite	hematite	limonite	illmenite	
1	Y-50	B23-19	cupriferous secondary sulfide ore	L		C	A	C										secondary minerals except pyrite
2	Y-31	B23-19	cupriferous sulfide ore	C	A			L										colloform
3	Y-51	B23-19	cupriferous secondary sulfide ore	L		C	A	C										secondary minerals except pyrite
4	Y-52(1)	B06-05	chromite ore							A								brecciated
5	Y-52(2)	B06-05	chromite ore							A								mylonited, magnetism
6	T-36	B03-03	iron oxide ore									L	L	C	L			
7	Y-40	B40-23	iron oxide ore	L									L					
8	Y-45	B26-18	hematite-quartz stringer										C					
9	Y-27	B32-28	iron oxide ore										C					botryoidal
10	T-34	B05-05	chromite ore							A								mylonited
11	S-28	B08-10	iron oxide ore									L	L	C				oolitic
12	Y-21	B32-19	iron oxide ore									L	L	C				oolitic
13	Y-20(1)	C23-17	arsenopyrite ore	L							A							vein-type
14	Y-14	C14-07	granodiorite porphyry	C	L				L	L	C							disseminated
15	Y-12	C08-13	granodiorite porphyry	L					L			L			L	L		margin faces of intrusives
16	Y-07	C37-10	sandstone	C	L				L									disseminated
17	S-20	C14-09	pyrrhotite stringer	L					L	L	C							vein-type
18	T-06	C39-16	sandstone	C	L													disseminated
19	Y-01	C20-08	sandstone	L	L													disseminated
20	Y-09	C37-13	hematite ore	L									C					layered

notes; A-abundant, C-common, L-little

Serial No.	Sample No.	Location	Specimen	Au(g/t)	Cu(%)	Pb(%)	Zn(%)	Mo(%)	Hg(%)
1	Y-50(1)	B23-19	massive sulfide ore	1.16	48.28	0.03	0.02	0.034	< 0.001
2	Y-50(2)	B23-19	massive sulfide ore	31.00	41.12	0.25	0.19	0.060	< 0.001
3	Y-31	B23-19	massive sulfide ore	1.85	24.61	0.08	0.14	0.012	< 0.001
4	Y-51	B23-19	massive sulfide ore	1.37	64.88	0.10	0.02	0.096	< 0.001
5	Y-52	B06-05	chromite ore	< 0.07	0.84	< 0.02	< 0.02	0.002	< 0.001
6	S-26	B07-08	chromite ore	< 0.07	0.28	< 0.02	0.02	0.001	< 0.001
7	S-30	B06-06	chromite ore	< 0.07	0.14	< 0.02	0.03	< 0.001	< 0.001
8	T-36	B03-03	iron oxide ore	< 0.07	0.18	< 0.02	0.02	< 0.001	< 0.001
9	Y-40	B40-23	iron oxide ore	< 0.07	0.20	< 0.02	< 0.02	0.001	< 0.001
10	Y-45	B26-18	hematite-quartz vein	< 0.07	0.02	< 0.02	< 0.02	< 0.001	< 0.001
11	Y-41	B39-20	chert	< 0.07	0.06	< 0.02	< 0.02	< 0.001	< 0.001
12	Y-27	B32-28	iron oxide ore	< 0.07	0.04	< 0.02	< 0.02	< 0.001	< 0.001
13	S-28	B08-10	iron oxide ore	< 0.07	< 0.02	< 0.02	0.02	0.001	< 0.001
14	T-35	B04-03	lateritic soil	< 0.07	< 0.02	< 0.02	0.02	< 0.001	< 0.001
15	Y-14	C14-07	granodiorite porphyry	< 0.07	0.06	< 0.02	0.02	< 0.001	< 0.001
16	Y-12	C08-13	granodiorite porphyry	0.21	0.06	< 0.02	< 0.02	< 0.001	< 0.001
17	Y-07	C37-10	sandstone	< 0.07	0.04	< 0.02	< 0.02	< 0.001	< 0.001
18	S-20	C14-09	pyrrhotite vein	< 0.07	0.02	< 0.02	0.02	0.001	< 0.001
19	T-06	C39-16	sandstone	< 0.07	0.10	< 0.02	< 0.02	0.001	< 0.001
20	Y-20(1)	C23-17	arsenopyrite ore	1.40	0.13	< 0.02	< 0.02	< 0.001	< 0.001
21	Y-20(2)	C23-17	arsenopyrite ore	2.13	< 0.02	< 0.02	< 0.02	< 0.001	< 0.001
22	Y-01	C20-08	sandstone	0.27	0.02	< 0.02	< 0.02	0.001	< 0.001
23	Y-09	C37-13	hematite ore	< 0.07	< 0.02	< 0.02	< 0.02	0.001	< 0.001
24	S-13	C01-02	granodiorite porphyry	< 0.07	< 0.02	< 0.02	< 0.02	0.001	< 0.001

note) (1) and (2) mean two tested samples from same specimen.
Analytical Data of As(%) and S(%) in Y-20(1) are 41.82% and 17.67% respectively.

Serial No.	Sample No.	Location	Specimen	Cr ₂ O ₃ (%)	Total Fe (%)	SiO ₂ (%)	Al ₂ O ₃ (%)	MgO (%)	Ni (ppm)	Co (ppm)
25	Y-52(1)	B06-05	chromite ore	32.66	13.11	6.13	22.87	17.19	1,809	174
26	Y-52(2)	B06-05	chromite ore	31.28	12.00	7.84	23.07	16.90	1,709	160
27	T-34	B05-05	chromite ore	29.73	11.29	10.79	19.85	15.63	1,629	156

note) (1) and (2) mean two tested samples from same specimen.

