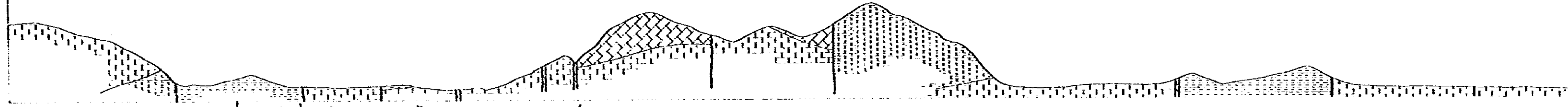
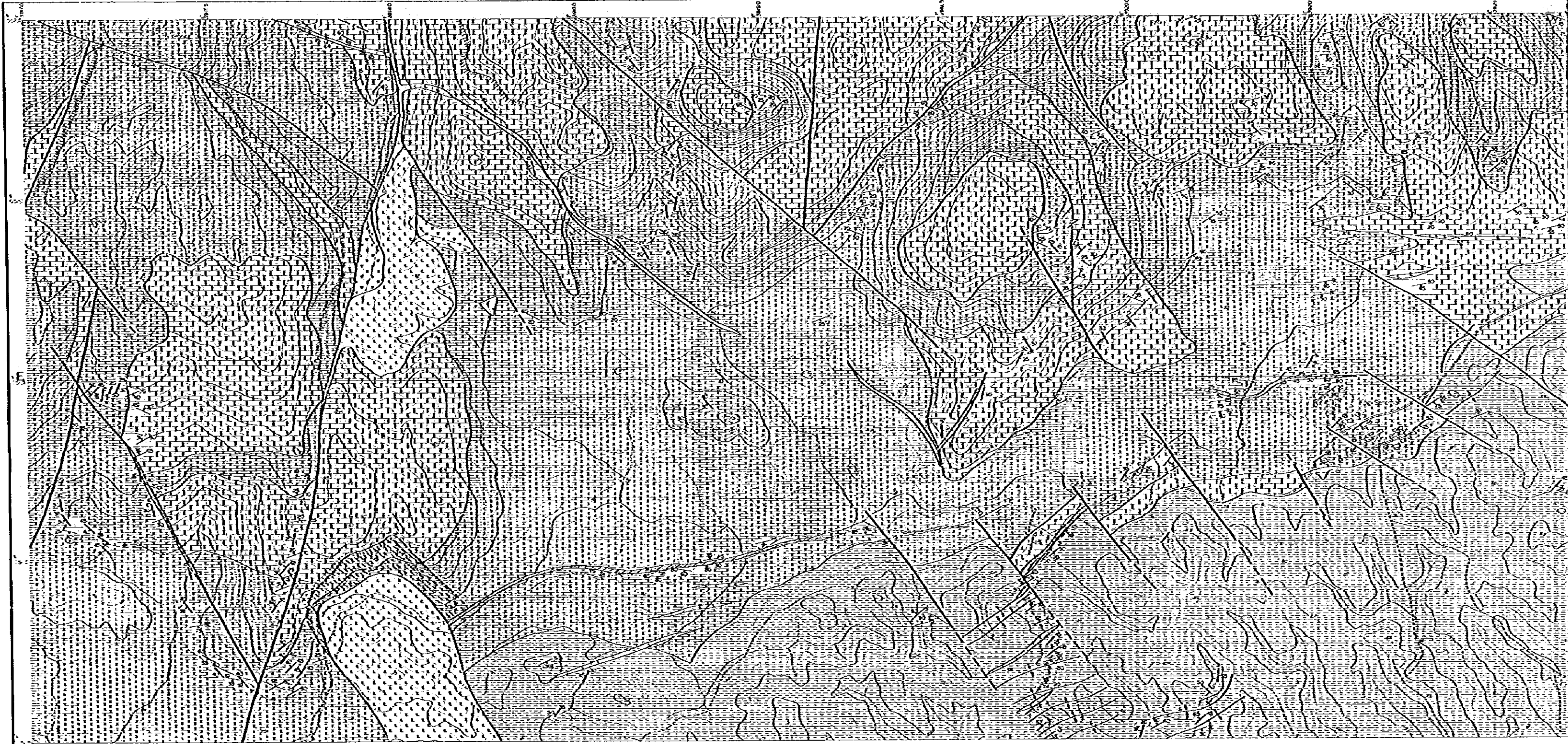
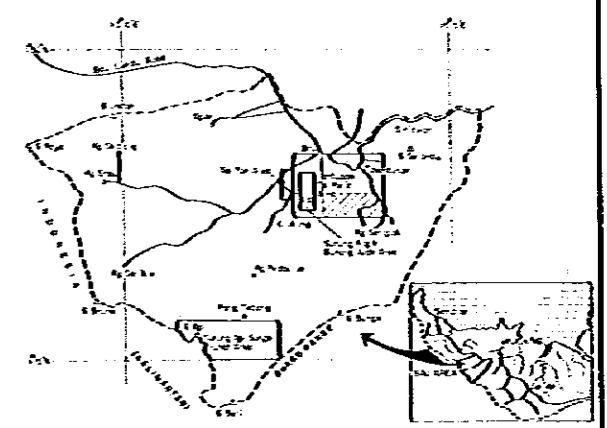


MAP I-1 GEOLOGICAL MAP OF
JAMBUSAN-TAI PARIT AREA,BAU 4-4

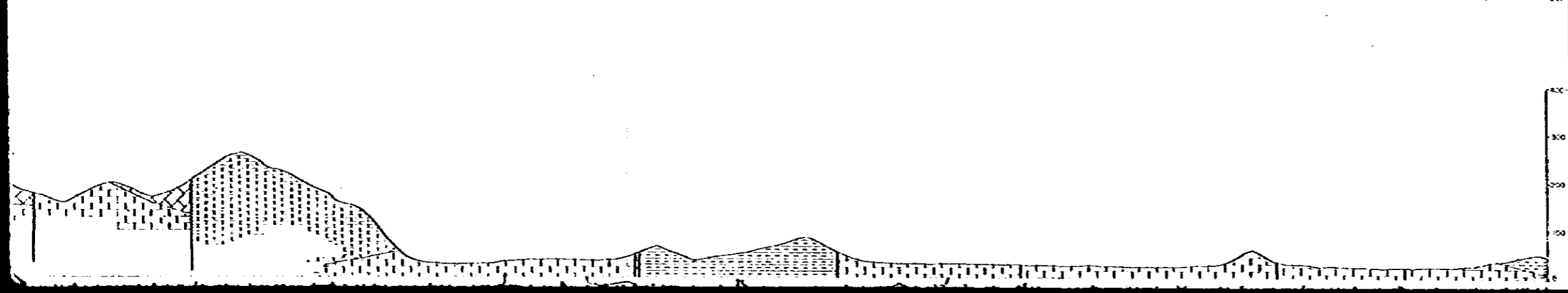
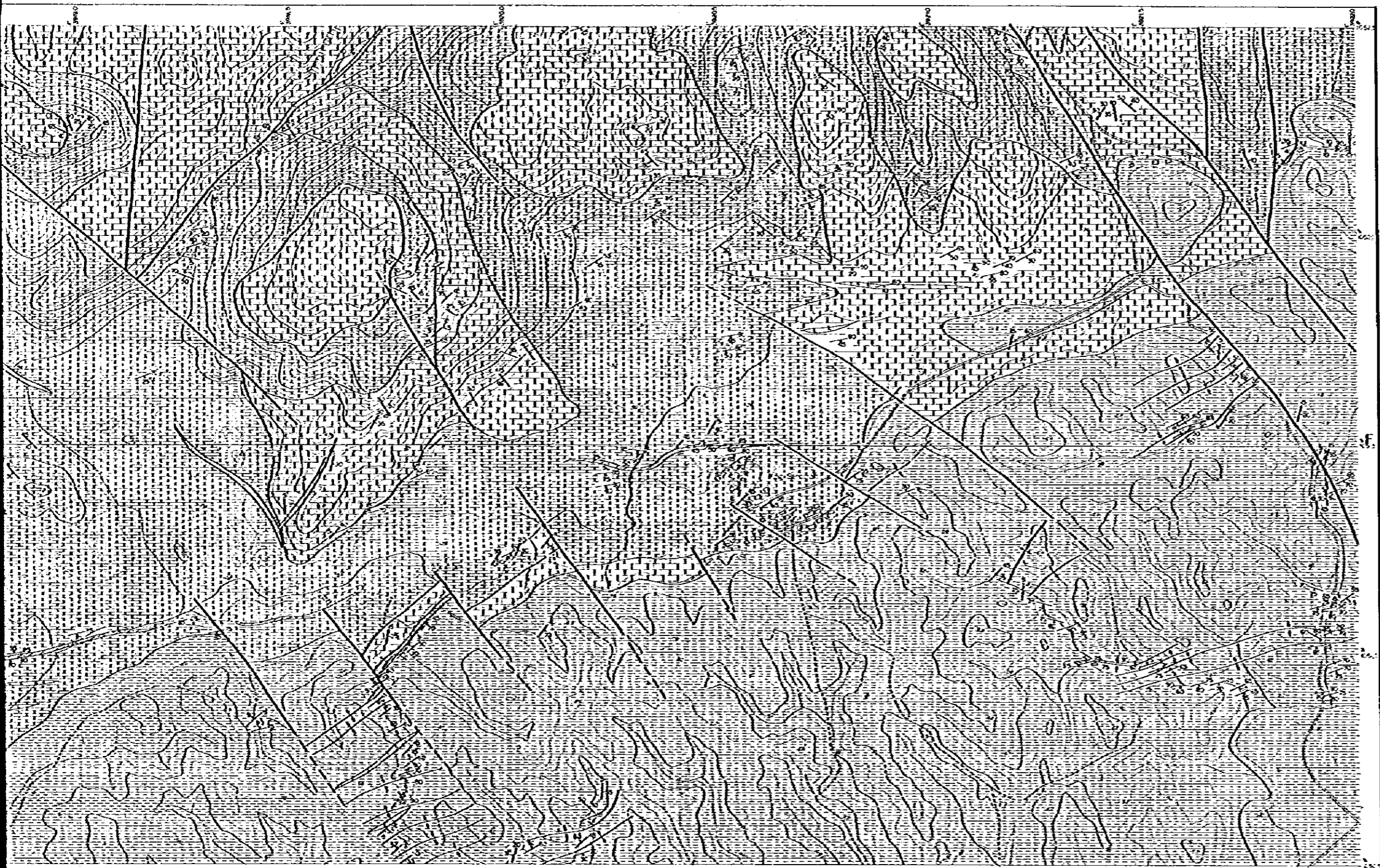


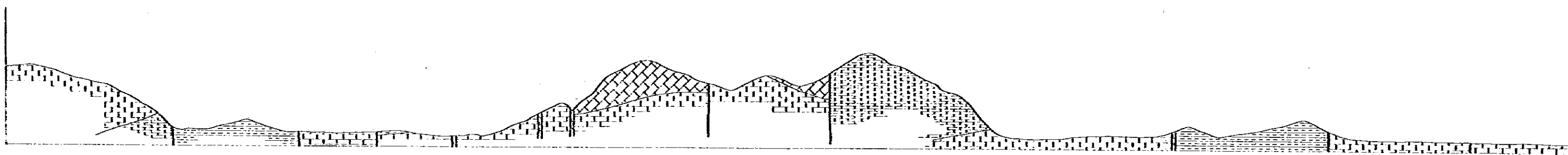
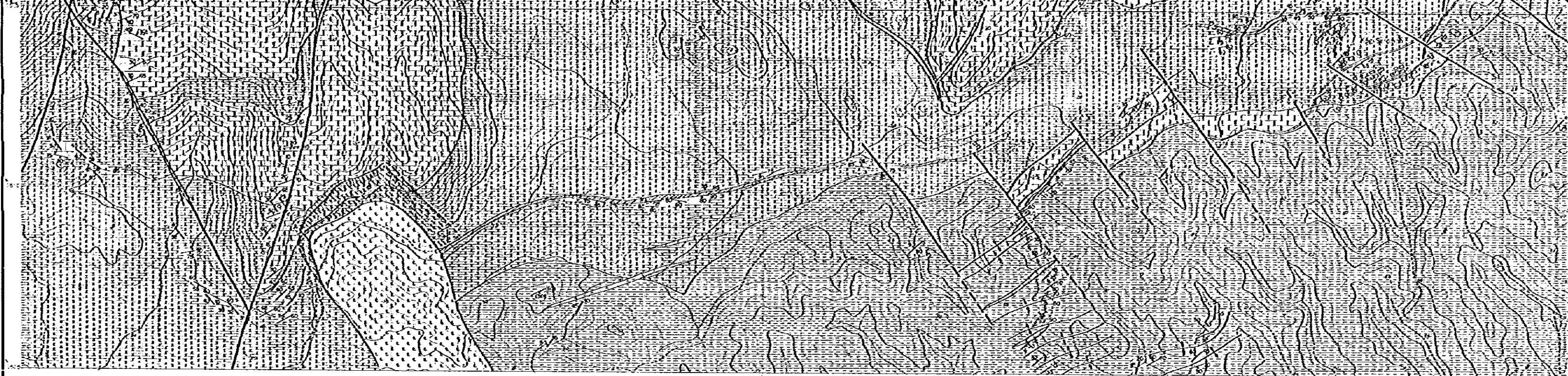
地质部地质研究所
1974年5月
地质部地质研究所
Map 1-T(4)

MINERAL EXPLORATION
BAU AREA
WEST SARAWAK, MALAYSIA
PHASE II
Geological Map of
Jombusan-Tai Parit Area (4)

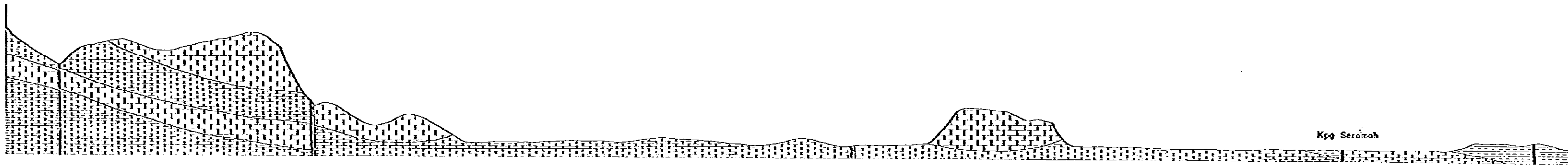


JAPAN INTERNATIONAL COOPERATION AGENCY
METAL MINING AGENCY OF JAPAN
GEOLOGICAL SURVEY OF MALAYSIA





SECTION B - C

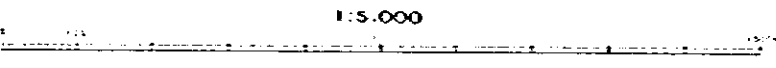


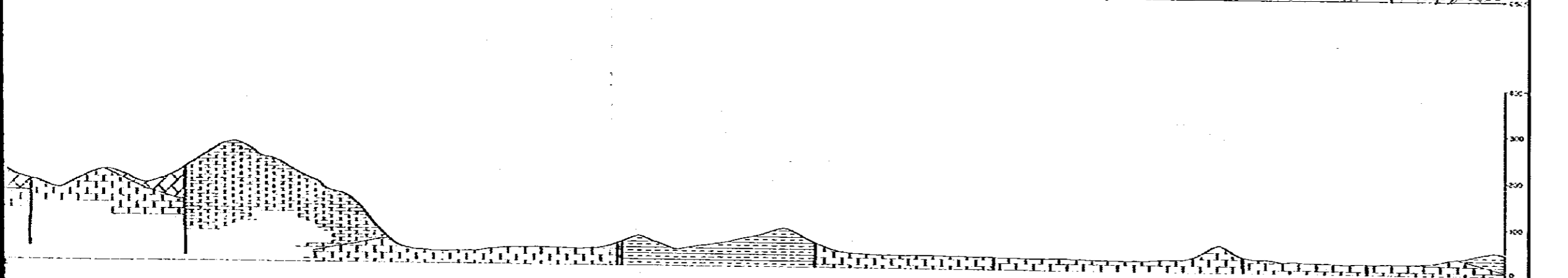
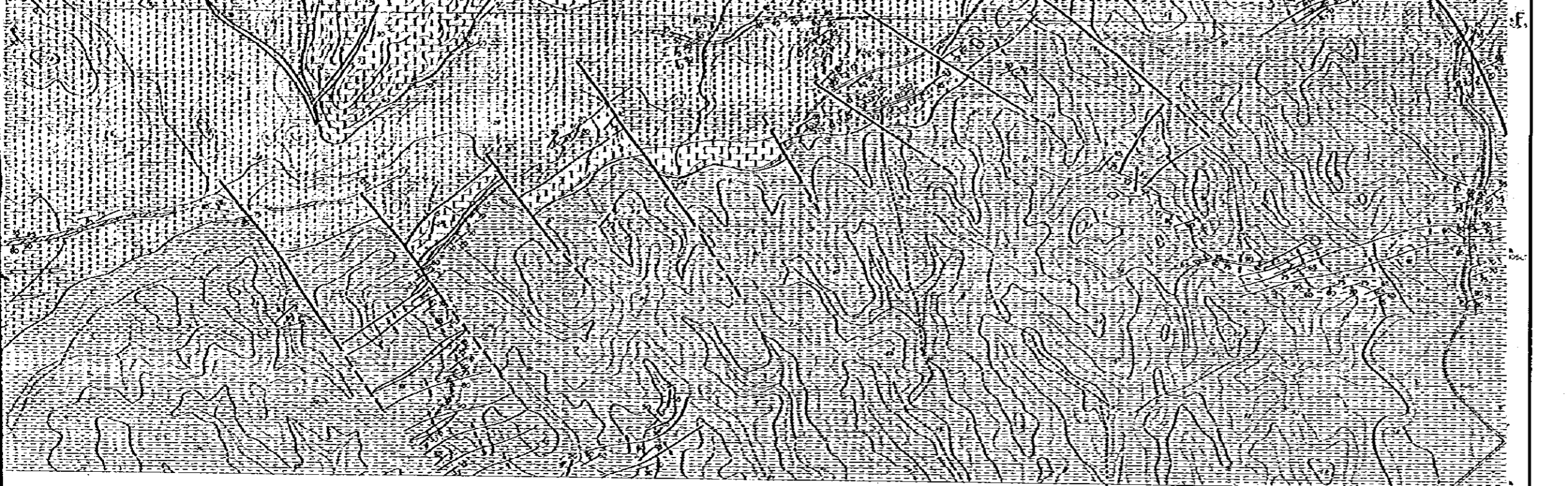
SECTION E - F

Kpg Seronoh

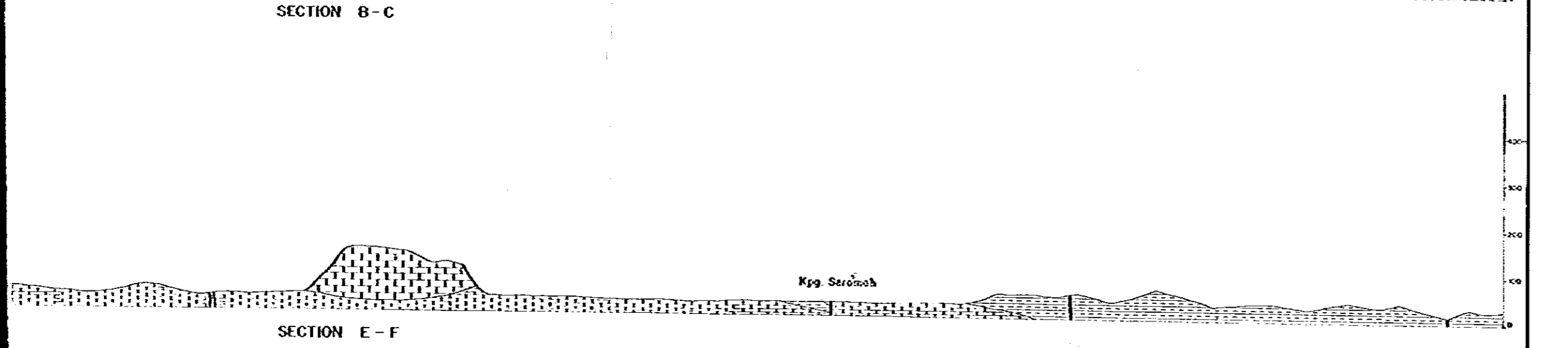
ROCK	
4-1	4-2
4-3	4-4

LOCATION





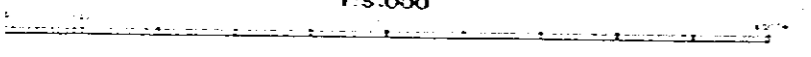
SECTION B-C



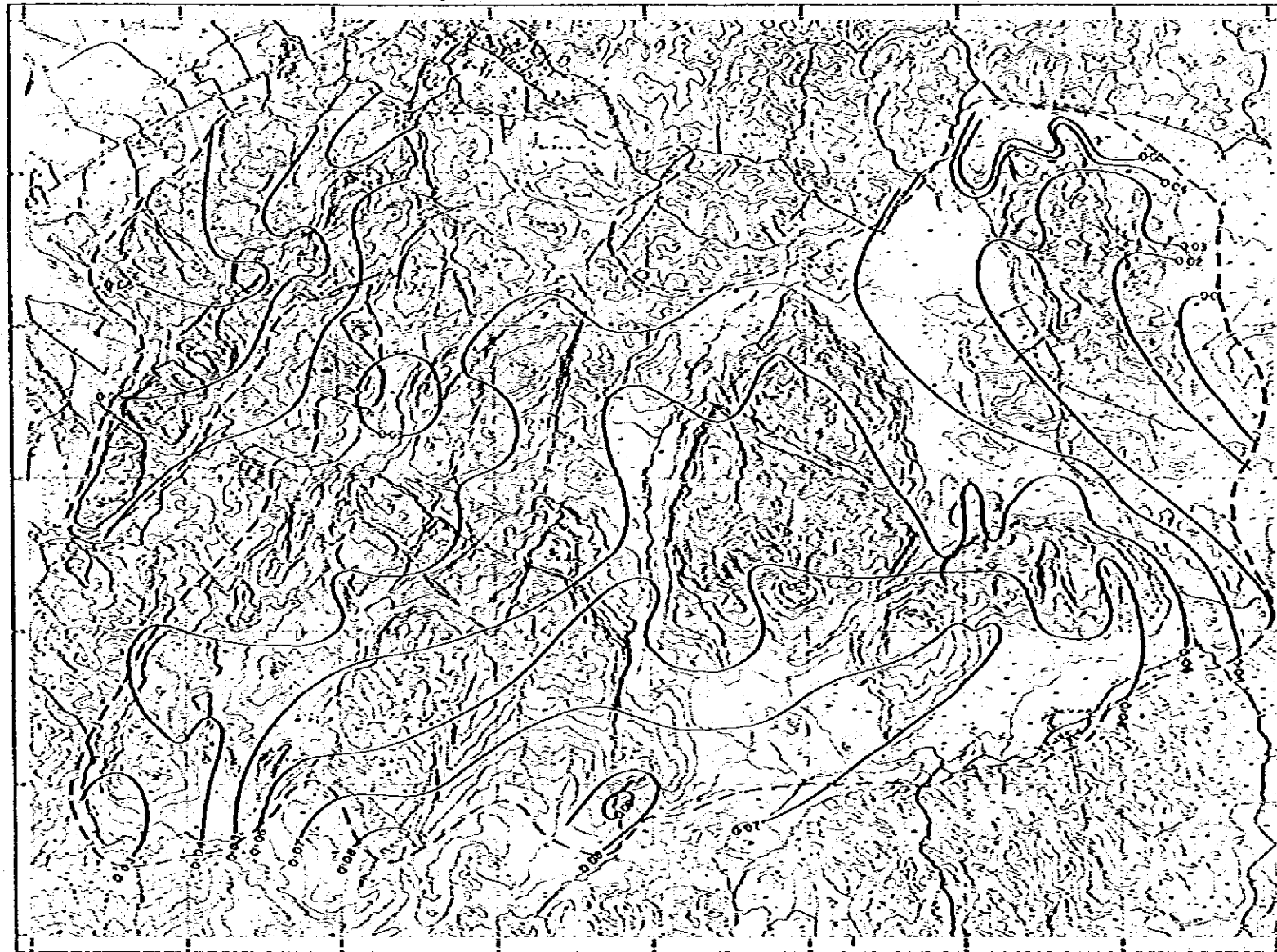
SECTION E-F

Kpg. Saromoh

1:5,000



MAP I-2 Au TREND SURFACE MAP



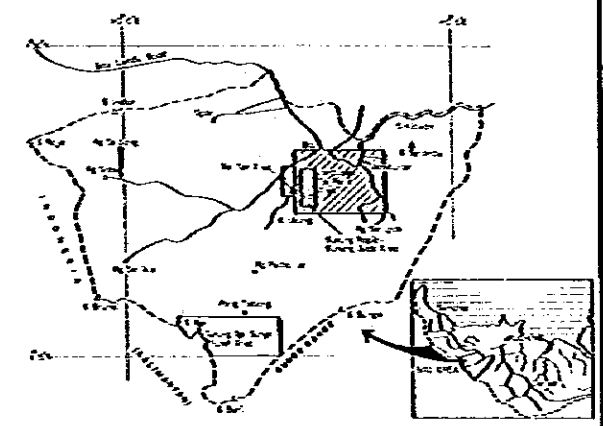
JAMBUSAN-TAI PARIT AREA

SCALE
 --- Approximate limit of sampling coverage
 Contour Interval = 0.01 gpa

国際協力事業団
 19945
 砂金採掘調査
 Map I-2

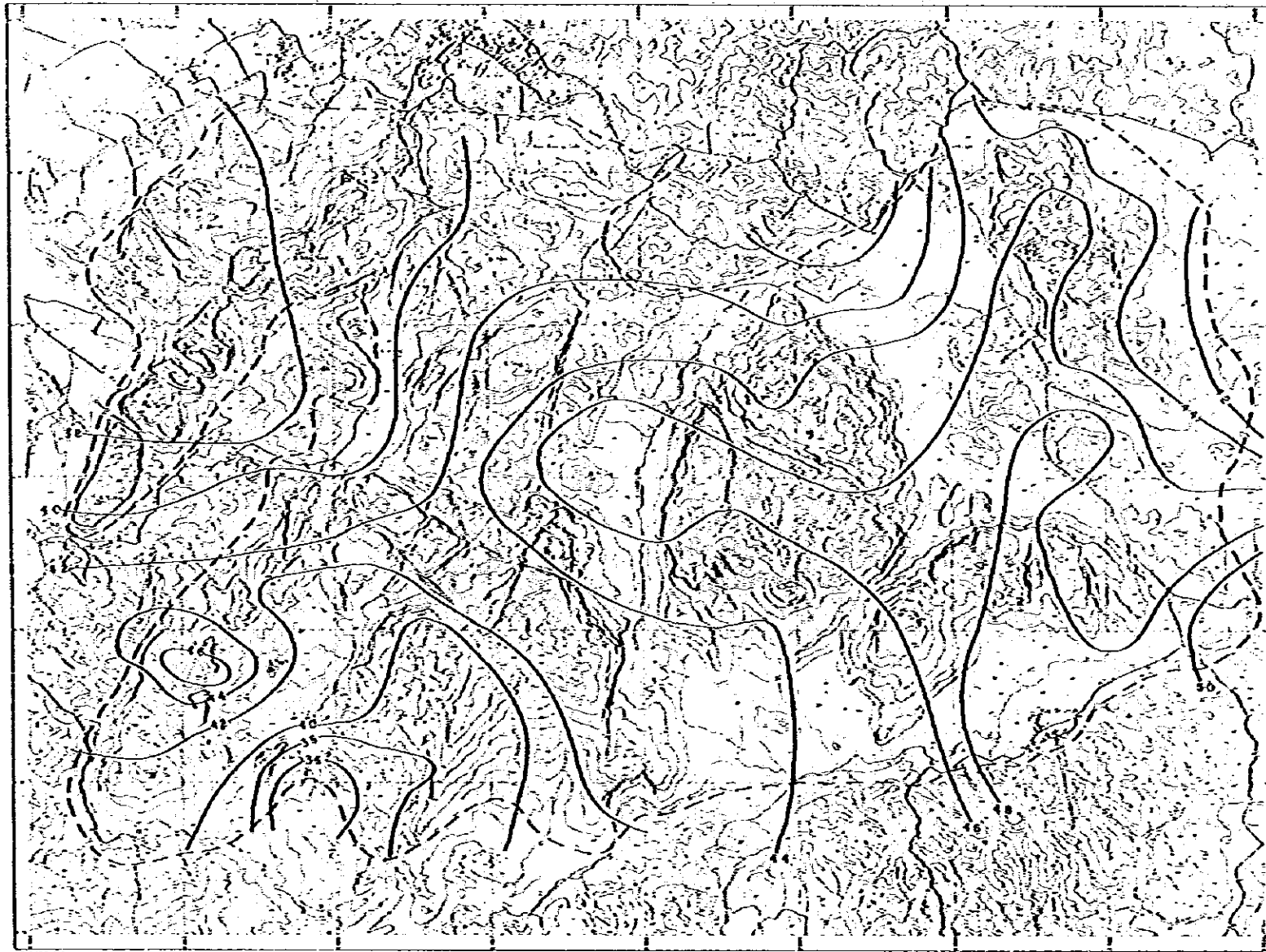
MINERAL EXPLORATION
 BAW AREA
 WEST SARAWAK, MALAYSIA
 PHASE II

Au Trend Surface Map,
 Jambusan-Tai Parit Area



JAPAN INTERNATIONAL COOPERATION AGENCY
 METAL MINING AGENCY OF JAPAN
 GEOLOGICAL SURVEY OF MALAYSIA

MAP I-3 Ag TREND SURFACE MAP



JAMBUSAN-TAI PARIT AREA



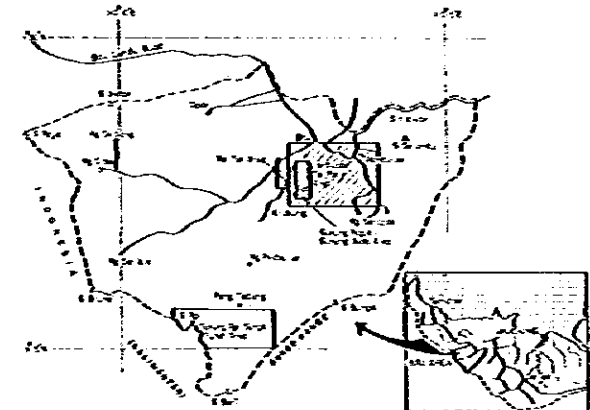
--- Approximate limit of sampling coverage

Contour interval = 02 ppm

理學技術事業団
10495
採査資料室
Map I-3

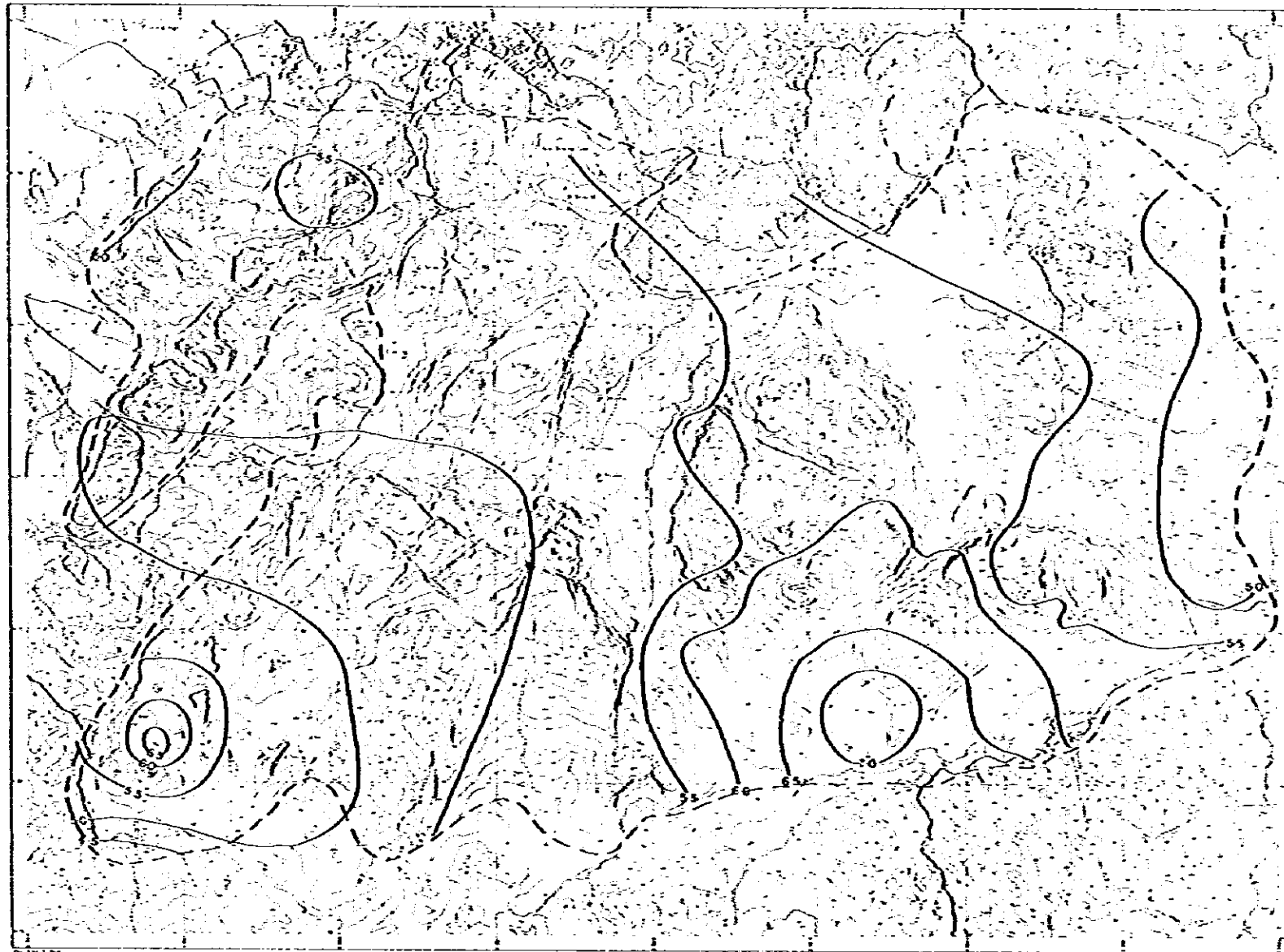
MINERAL EXPLORATION
BAU AREA
WEST SARAWAK, MALAYSIA
PHASE II

Ag Trend Surface Map,
Jambusan-Tai Parit Area



JAPAN INTERNATIONAL COOPERATION AGENCY
METAL MINING AGENCY OF JAPAN
GEOLOGICAL SURVEY OF MALAYSIA

MAP I-4 Cu TREND SURFACE MAP

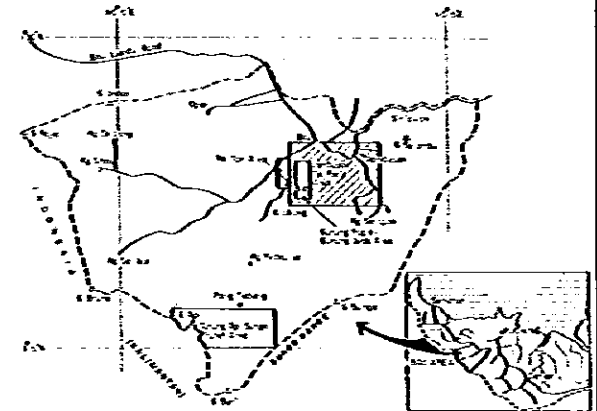


JAMBUSAN-TAI PARIT AREA

--- Boundary line limit of sampling coverage
 Contour interval = 0.5 ppm

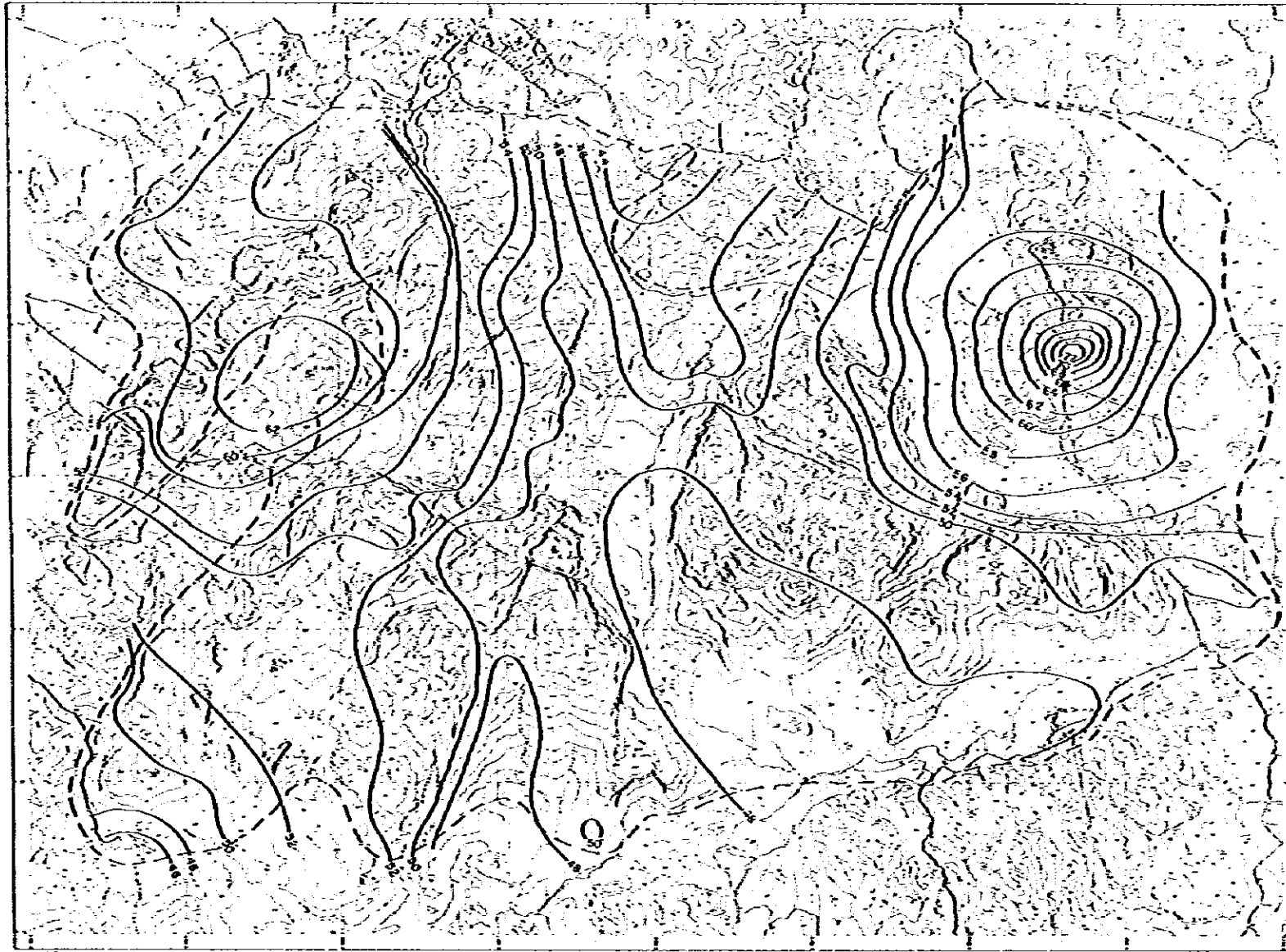
区有協力事業団
 10845
 伊藤英利監製
 Map I-4

MINERAL EXPLORATION
 BAU AREA
 WEST SARAWAK, MALAYSIA
 PHASE II
 Cu Trend Surface Map,
 Jambusan-Tai Parit Area



JAPAN INTERNATIONAL COOPERATION AGENCY
 METAL MINING AGENCY OF JAPAN
 GEOLOGICAL SURVEY OF MALAYSIA

MAP I-5 Pb TREND SURFACE MAP

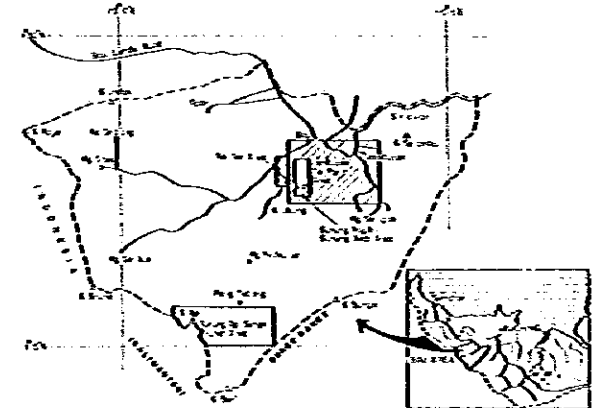


JAMBUSAN-TAI PARIT AREA

Scale
--- Speculate outside limit of survey coverage
Contour interval = 2 ppm

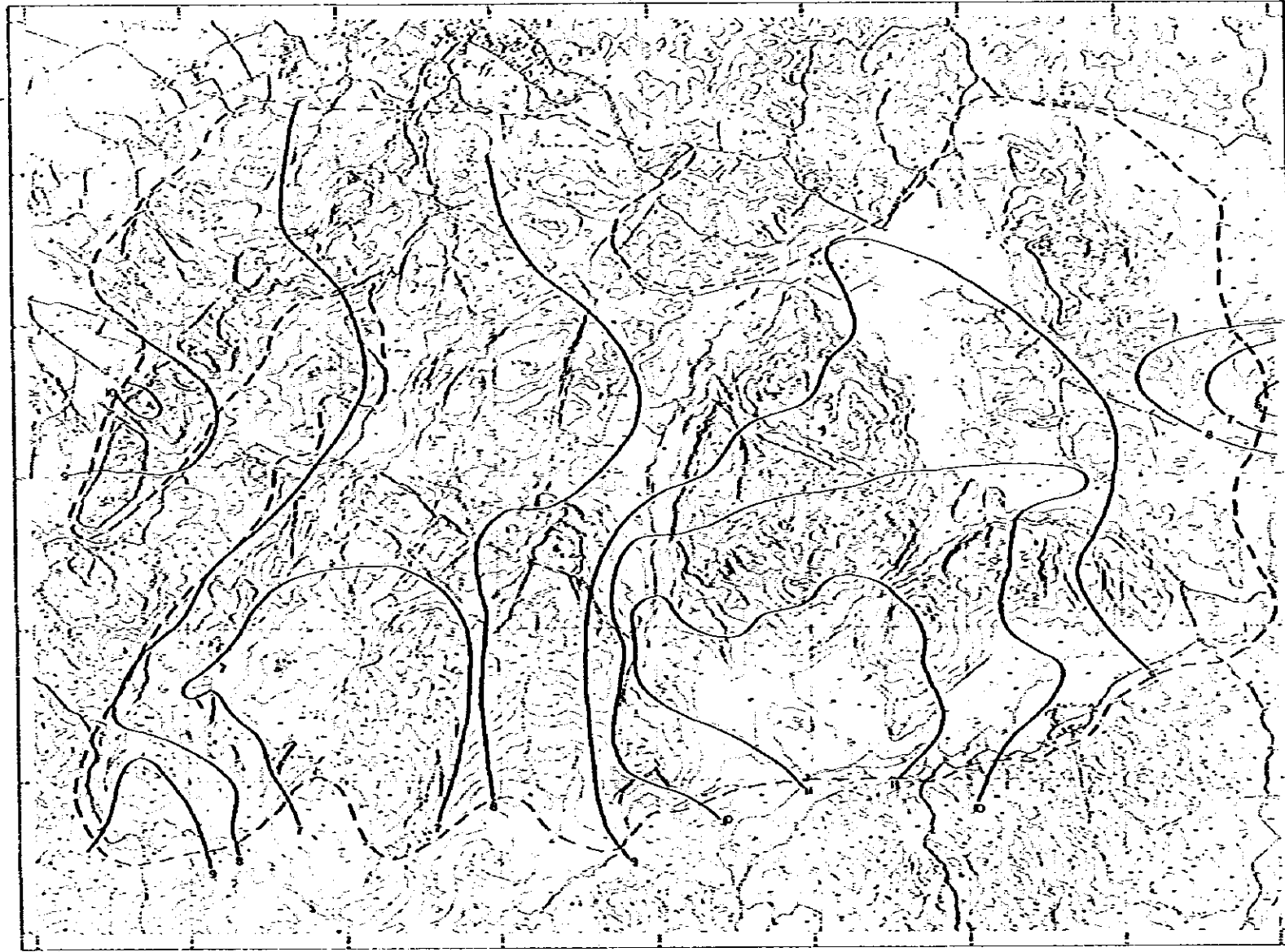
地质研究所
1995
地质研究所
Map I-5

MINERAL EXPLORATION
BAU AREA
WEST SARAWAK, MALAYSIA
PHASE II
Pb Trend Surface Map,
Jambusan-Tai Parit Area



JAPAN INTERNATIONAL COOPERATION AGENCY
METAL MINING AGENCY OF JAPAN
GEOLOGICAL SURVEY OF MALAYSIA

MAP I-6 Zn TREND SURFACE MAP

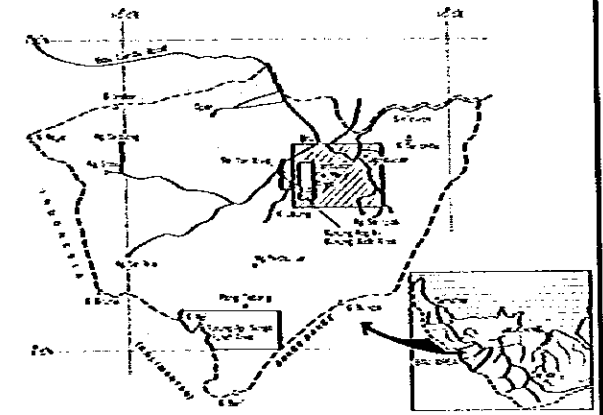


JAMBUSAN-TAI PARIT AREA

--- Approximate limit of sampling coverage
Contour Interval = 1 ppm

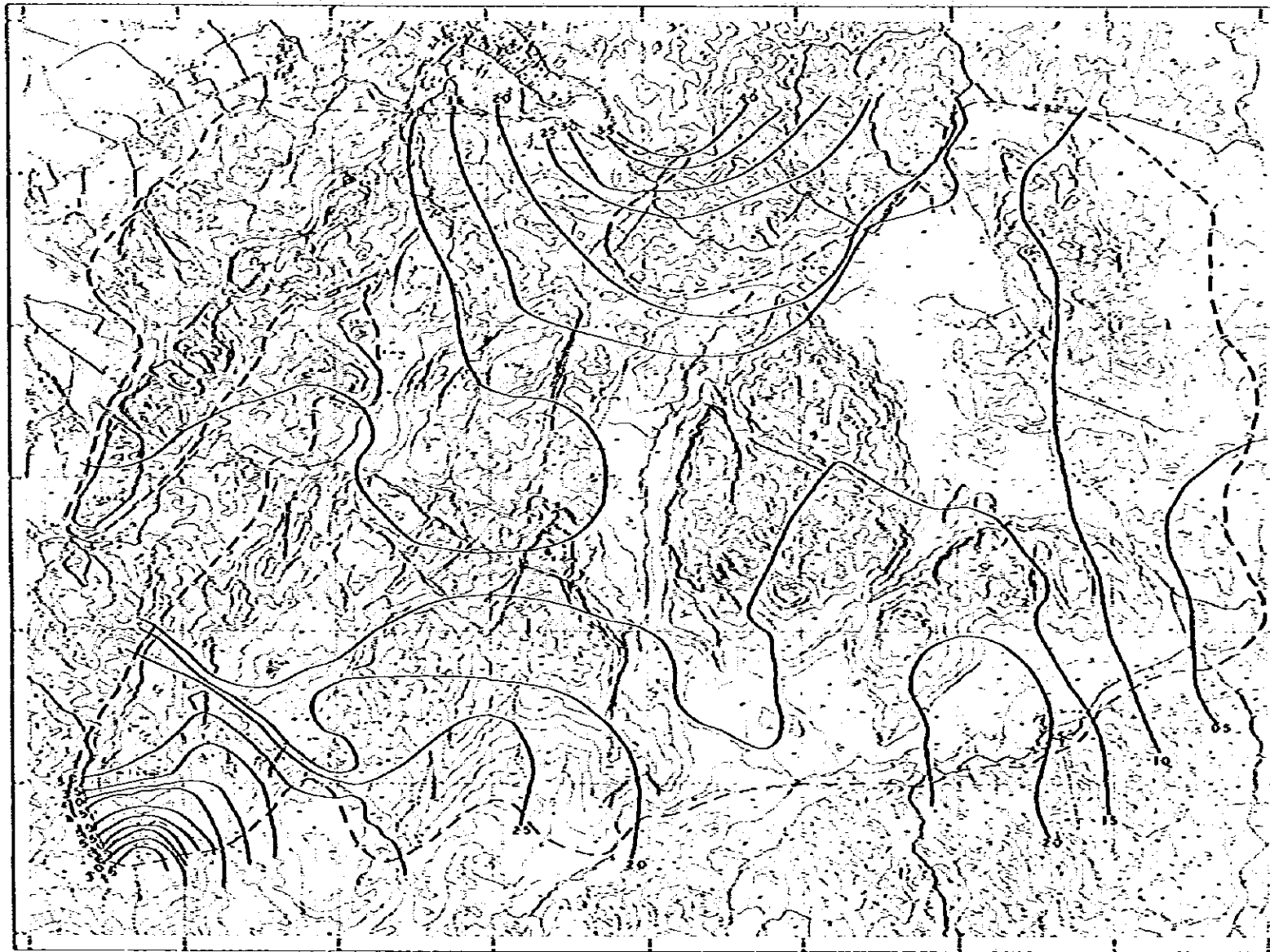
資源調査報告書
16945
図表: 地質調査
Map I-6

MINERAL EXPLORATION
BAU AREA
WEST SARAWAK, MALAYSIA
PHASE II
Zn Trend Surface Map,
Jambusan-Tai Parit Area



JAPAN INTERNATIONAL COOPERATION AGENCY
METAL MINING AGENCY OF JAPAN
GEOLOGICAL SURVEY OF MALAYSIA

MAP I-7 Mo TREND SURFACE MAP



JAMBUSAN-TAI PARIT AREA



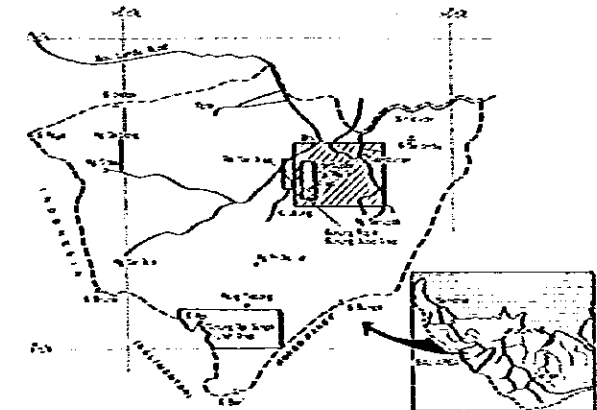
--- Approximate site limit of sampling coverage

Contour Interval = 0.5 feet

国産協力事業団
1974年
国産協力事業団
Map I-7

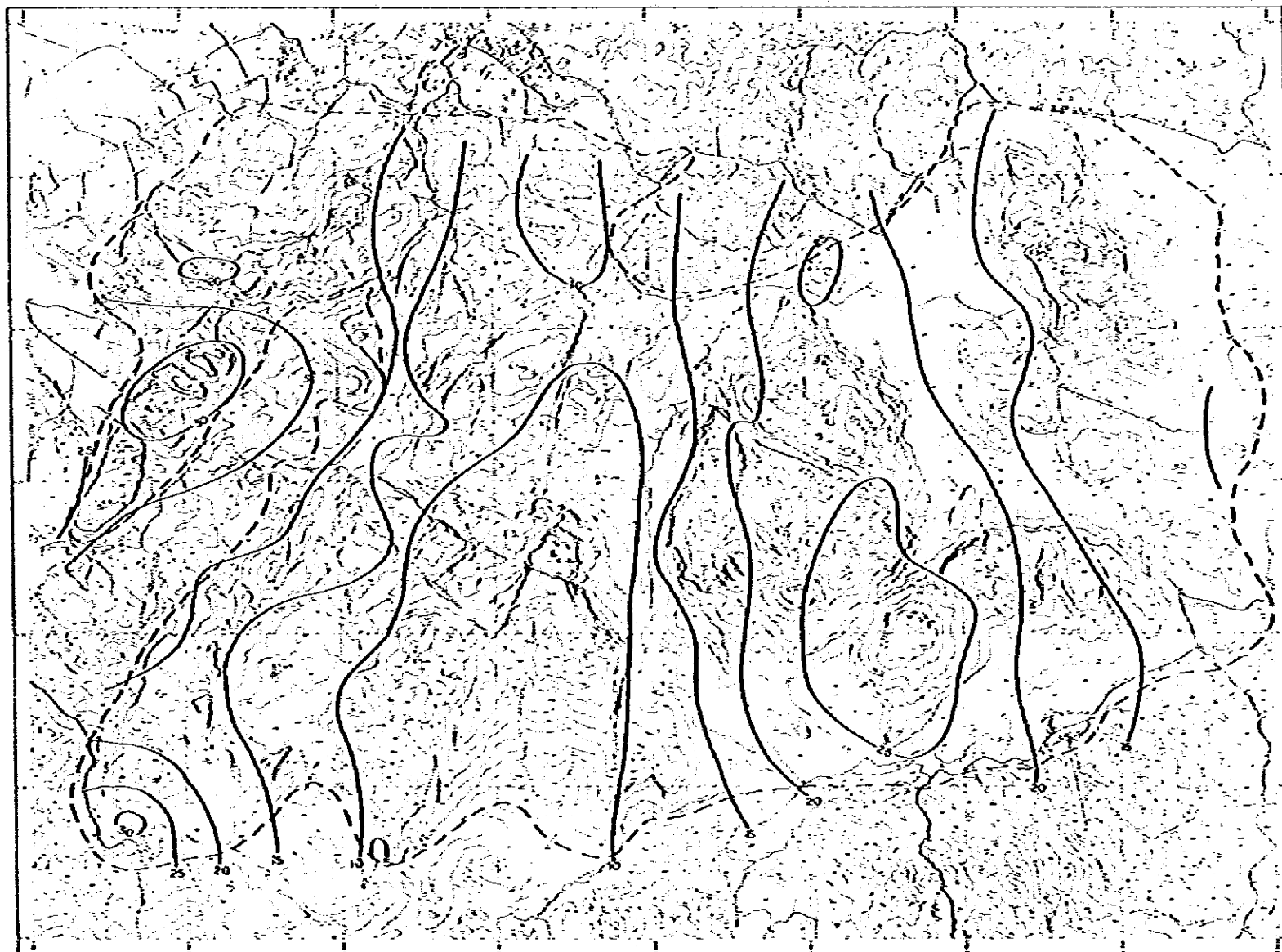
MINERAL EXPLORATION
BAU AREA
WEST SARAWAK, MALAYSIA
PHASE II

Mo Trend Surface Map,
Jambuson-Tai Parit Area



JAPAN INTERNATIONAL COOPERATION AGENCY
METAL MINING AGENCY OF JAPAN
GEOLOGICAL SURVEY OF MALAYSIA

MAP 1-8 As TREND SURFACE MAP

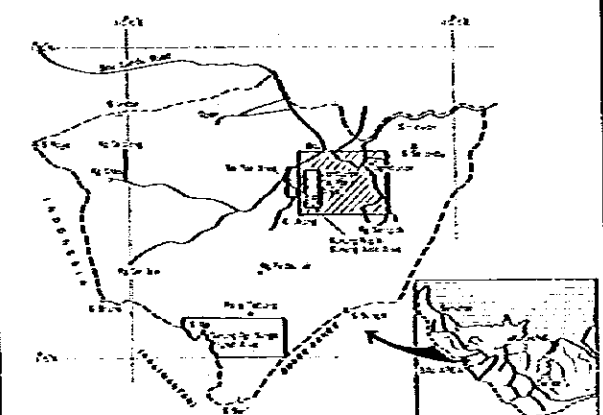


JAMBUSAN-TAI PARIT AREA

--- Approximate limit of sampling coverage
Contour interval = 5 gpa

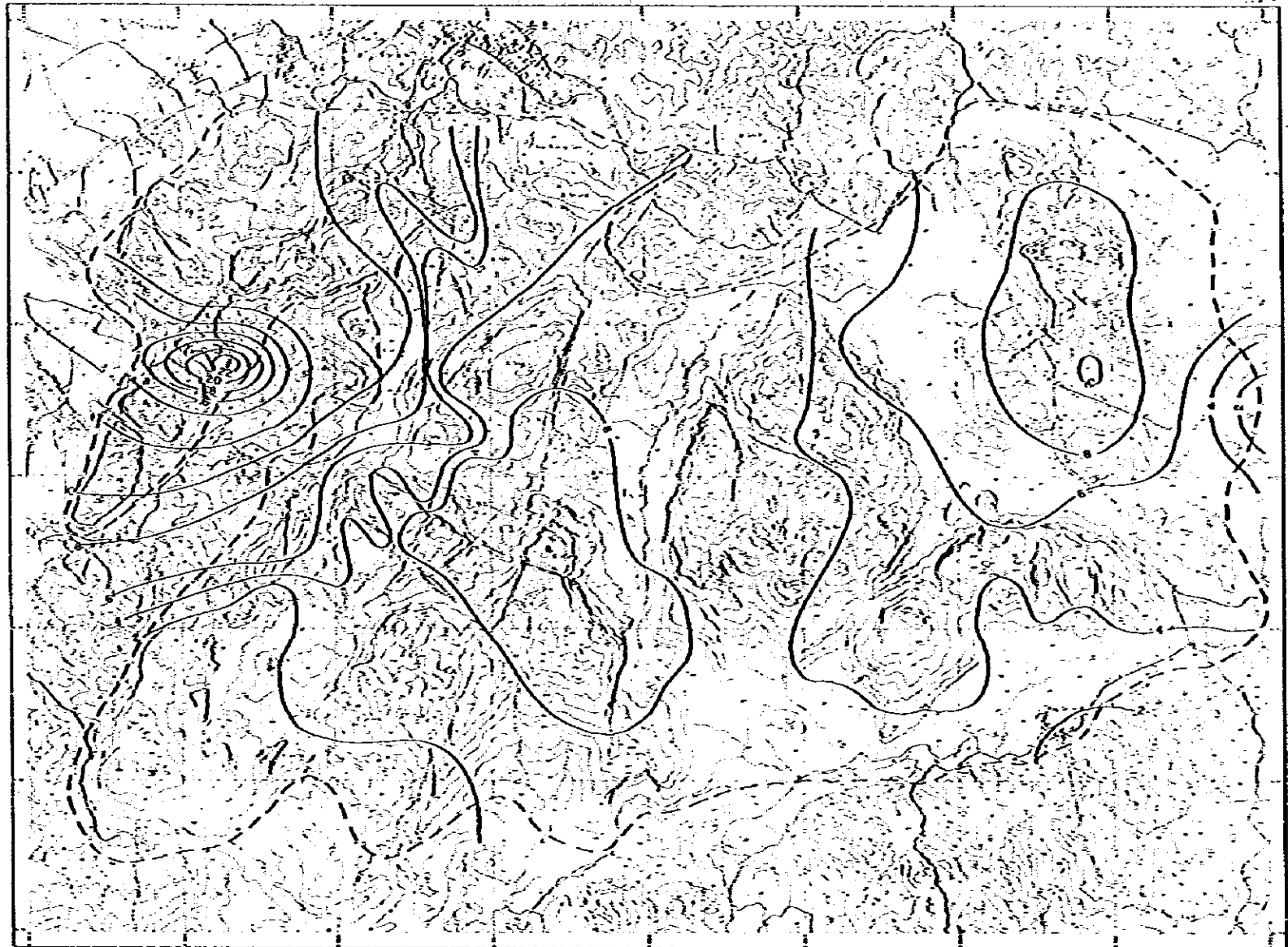
国営協力事業団
1995
12 111808
Map 1-8

MINERAL EXPLORATION
BAU AREA
WEST SARAWAK, MALAYSIA
PHASE II
As Trend Surface Map,
Jambuson-Tai Parit Area



JAPAN INTERNATIONAL COOPERATION AGENCY
METAL MINING AGENCY OF JAPAN
GEOLOGICAL SURVEY OF MALAYSIA

MAP I-9 Sb TREND SURFACE MAP



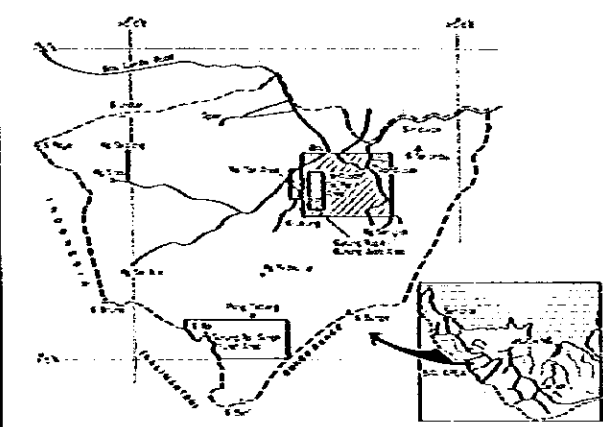
JAMBUSAN-TAI PARIT AREA

----- Approximate outer limit of sampling coverage
Contour interval = 2 pps

16995
1031-9

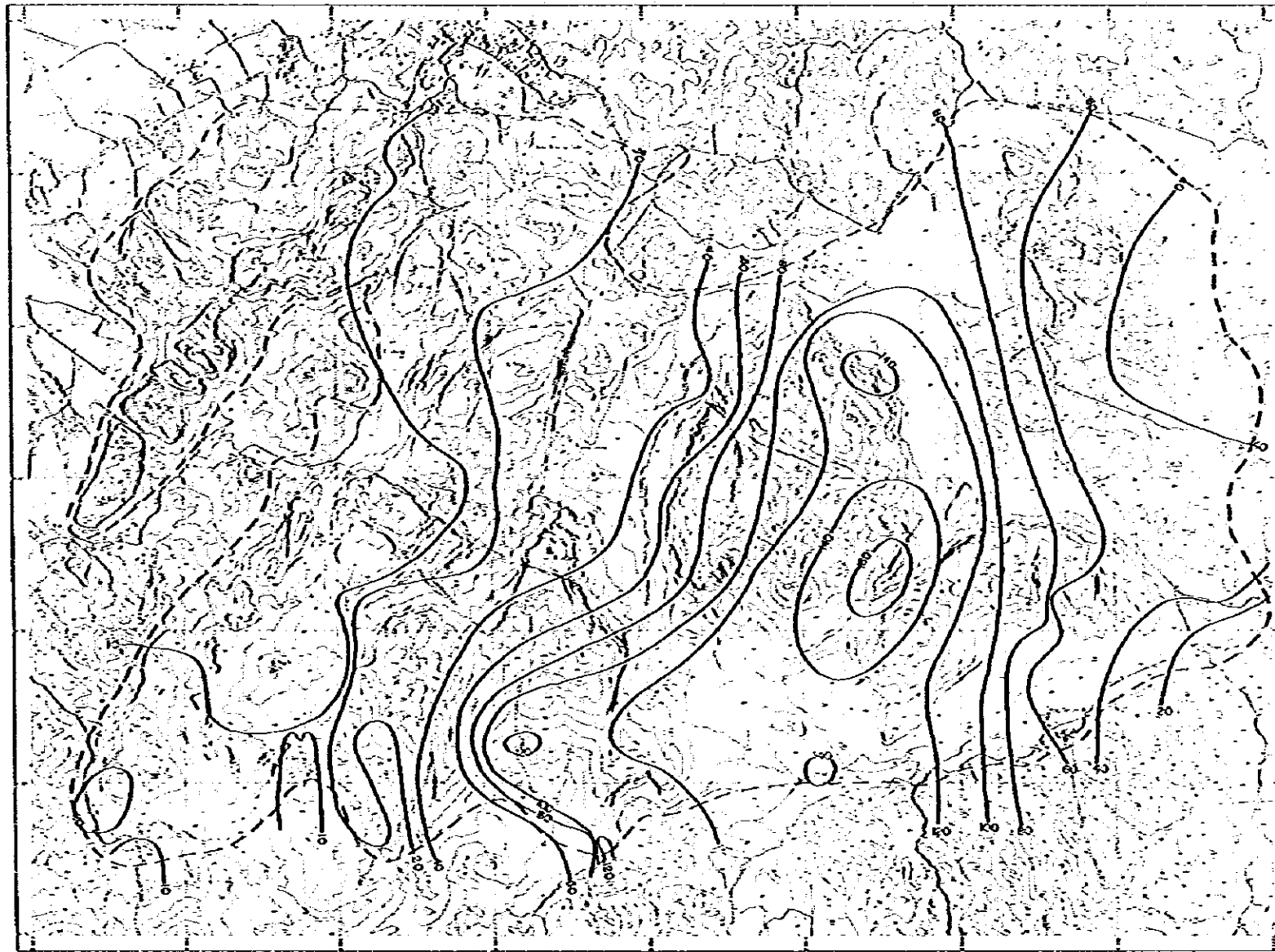
MINERAL EXPLORATION
BAU AREA
WEST SARAWAK, MALAYSIA
PHASE II

Sb Trend Surface Map,
Jambusan-Tai Parit Area



JAPAN INTERNATIONAL COOPERATION AGENCY
METAL MINING AGENCY OF JAPAN
GEOLOGICAL SURVEY OF MALAYSIA

MAP I-10 Hg TREND SURFACE MAP



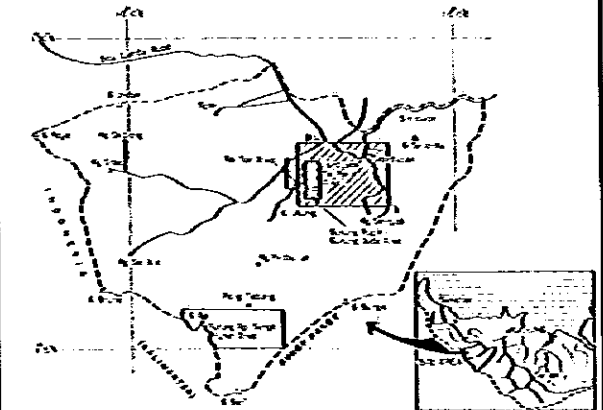
JAMBUSAN-TAI PARIT AREA

--- Approximate limit of sampling coverage
 Contour interval = 20 ppb

10445
 Map I-10

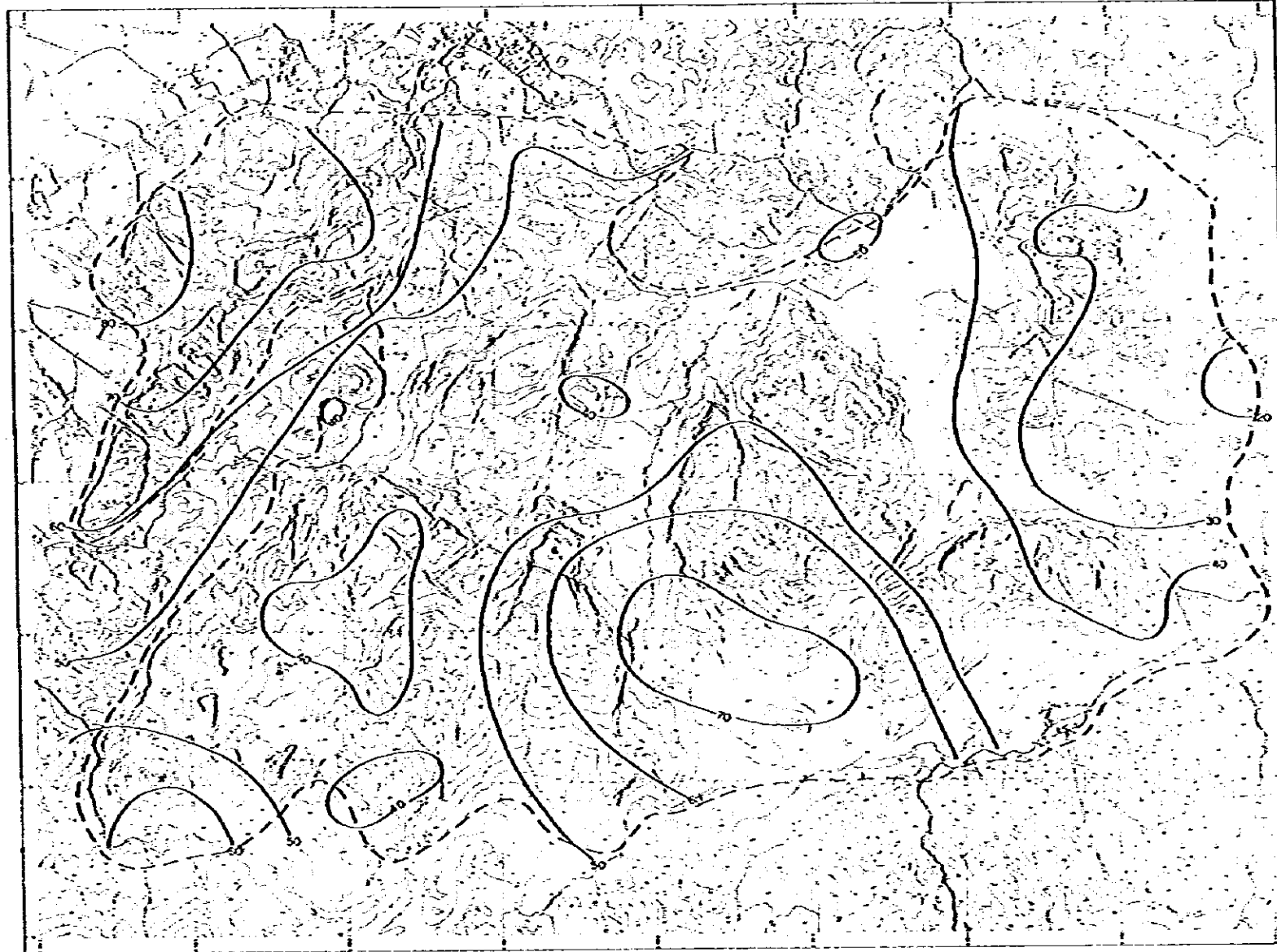
MINERAL EXPLORATION
 BAU AREA
 WEST SARAWAK, MALAYSIA
 PHASE II

Hg Trend Surface Map,
 Jambuson-Tai Parit Area



JAPAN INTERNATIONAL COOPERATION AGENCY
 METAL MINING AGENCY OF JAPAN
 GEOLOGICAL SURVEY OF MALAYSIA

MAP I-II Mn TREND SURFACE MAP

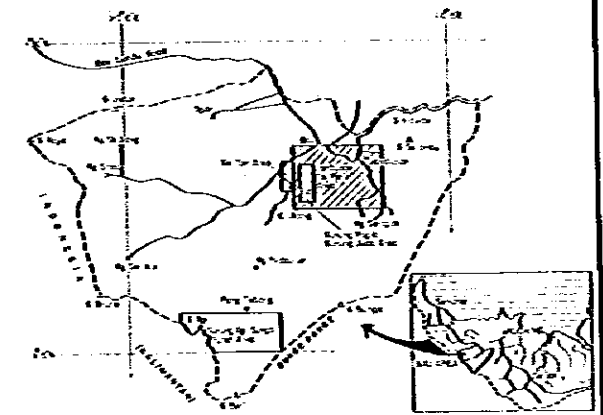


JAMBUSAN-TAI PARIT AREA

--- Approximate limit of sampling coverage
Contour interval 10 ppm

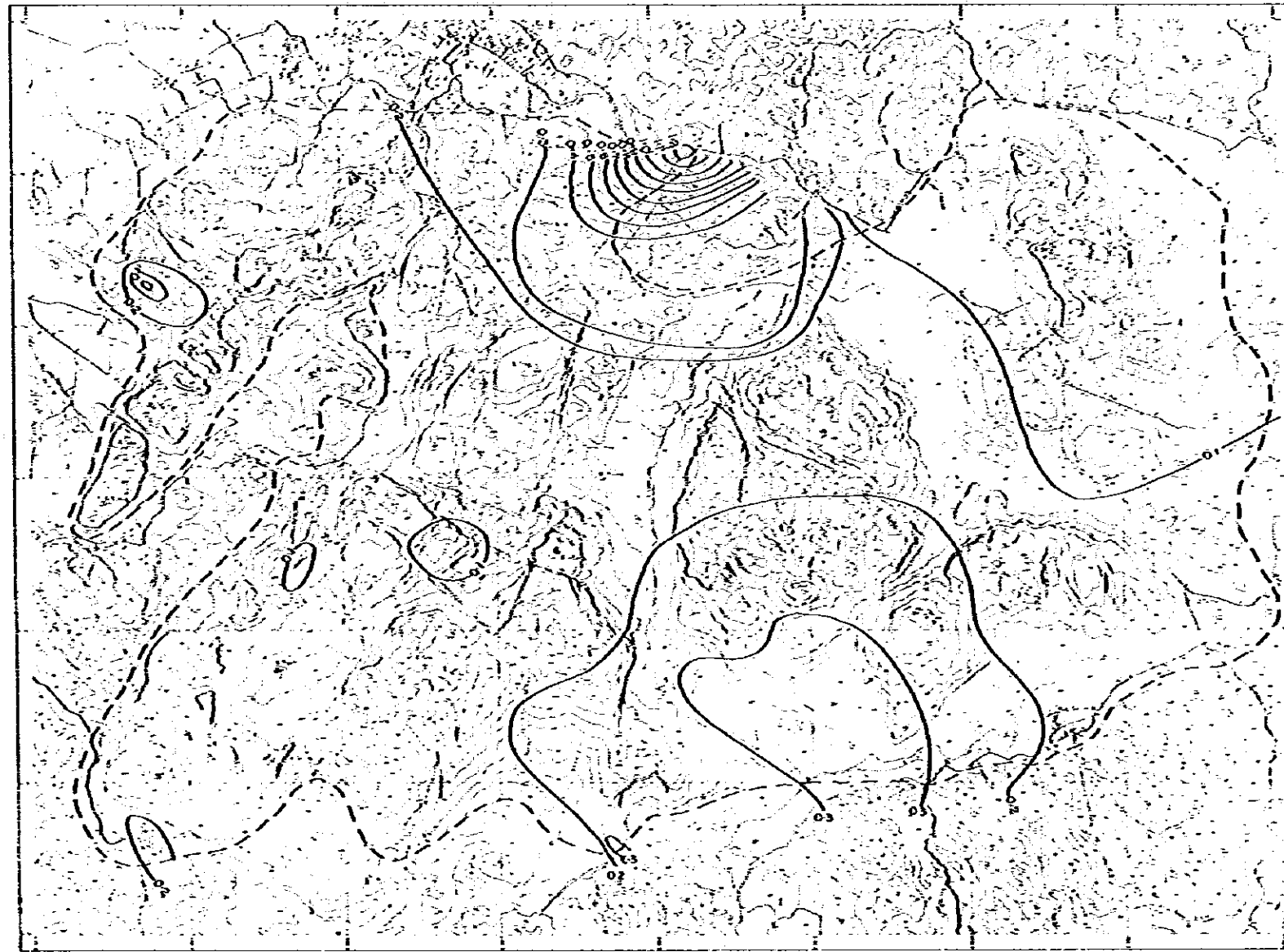
国際協力事業団
10年45
砂金調査報告書
Map I-II

MINERAL EXPLORATION
BAU AREA
WEST SARAWAK, MALAYSIA
PHASE II
Mn Trend Surface Map,
Jambusan-Tai Parit Area



JAPAN INTERNATIONAL COOPERATION AGENCY
METAL MINING AGENCY OF JAPAN
GEOLOGICAL SURVEY OF MALAYSIA

MAP I-12 Fe TREND SURFACE MAP

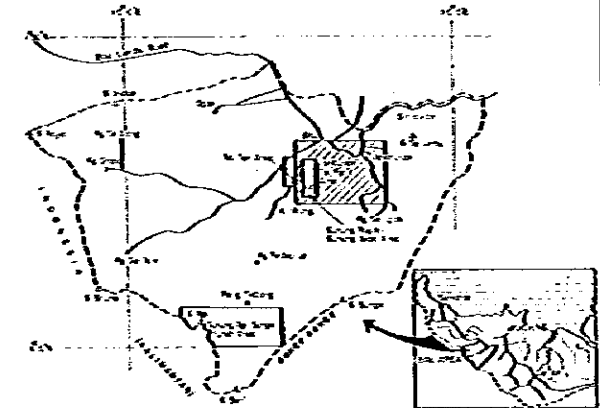


JAMBUSAN-TAI PARIT AREA

--- Approximate limit of sampling coverage
 Contour Interval = 0.1%

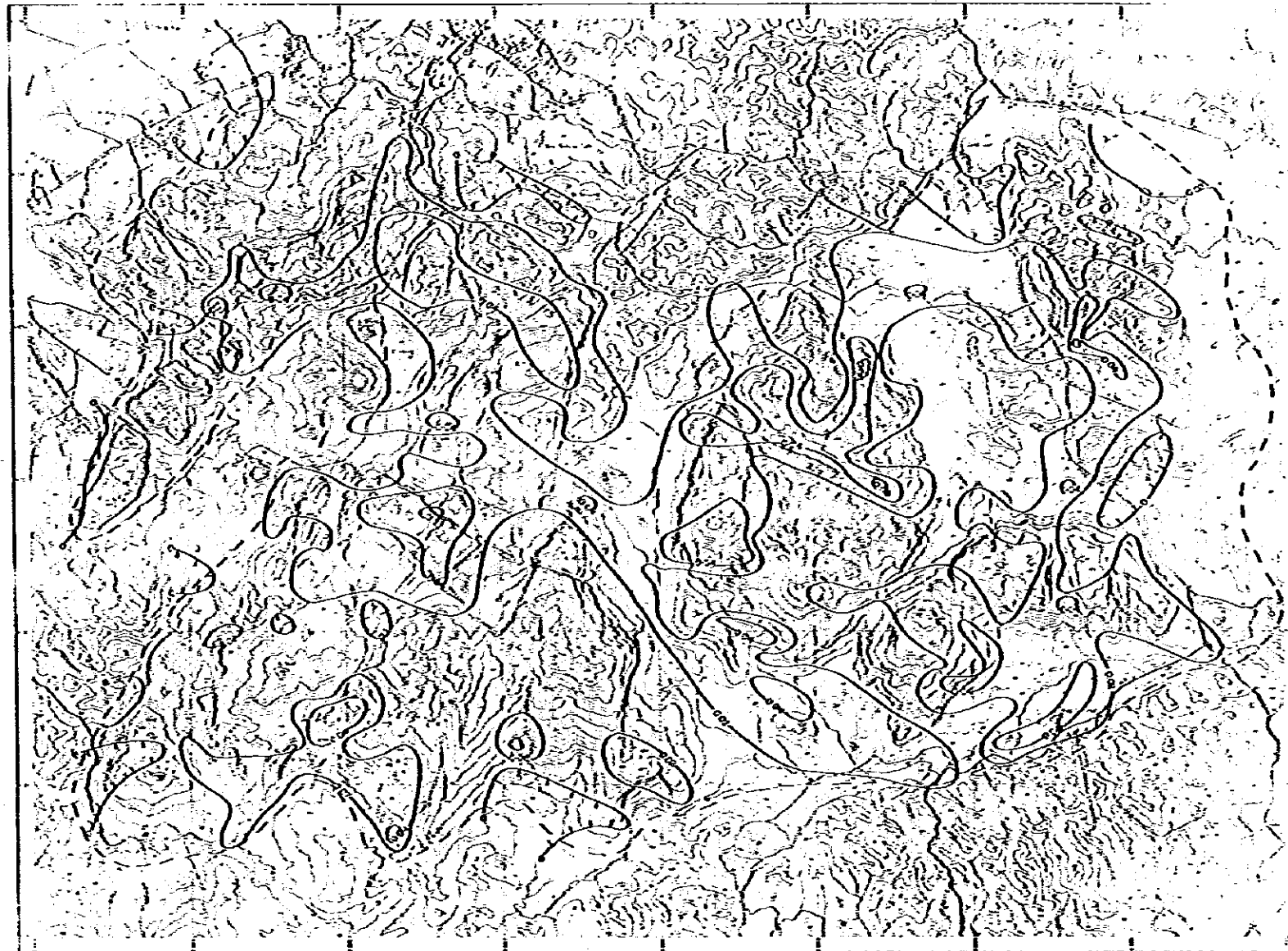
資源調査課
 1975
 図面番号 12
 Map

MINERAL EXPLORATION
 BAU AREA
 WEST SARAWAK, MALAYSIA
 PHASE II
 Fe Trend Surface Map,
 Jambuson-Tai Parit Area



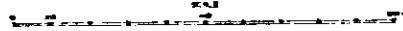
JAPAN INTERNATIONAL COOPERATION AGENCY
 METAL MINING AGENCY OF JAPAN
 GEOLOGICAL SURVEY OF MALAYSIA

MAP I-13 Au ANOMALY SURFACE MAP



SW 3387/1111

JAMBUSAN-TAI PARIT AREA

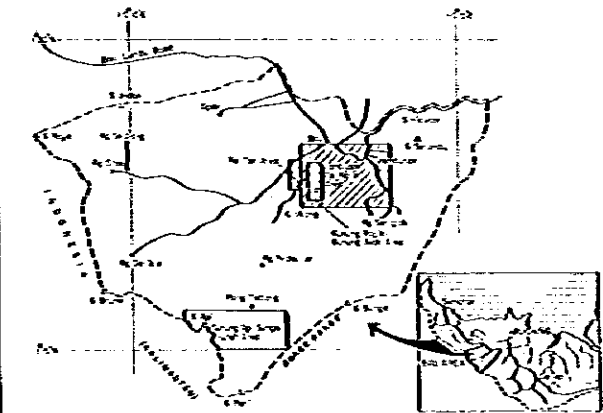


Contour interval 0.02 ppm
--- Approximate outer limit of sounding coverage

資源庁
1974
1111

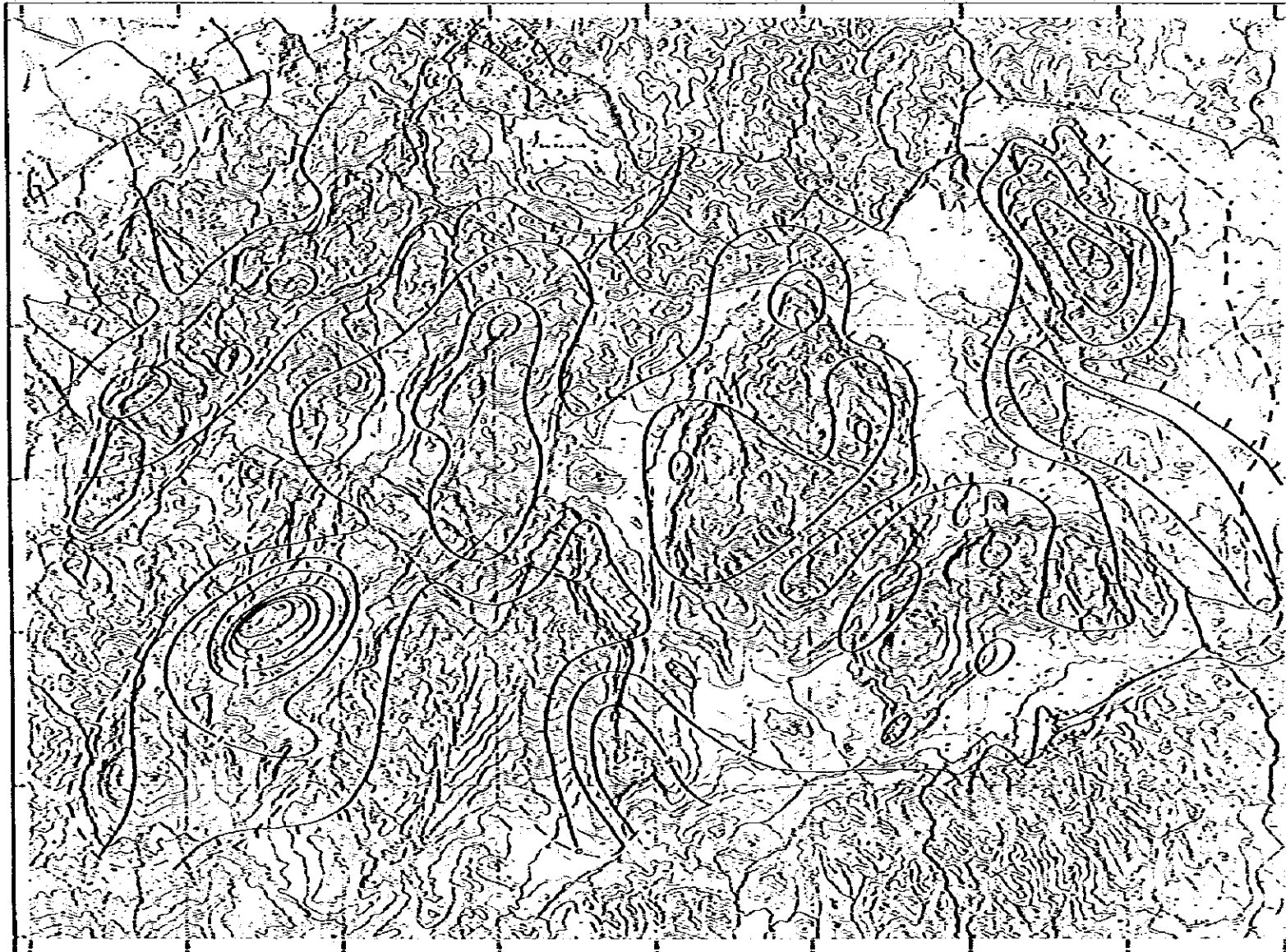
MINERAL EXPLORATION
BAU AREA
WEST SARAWAK, MALAYSIA
PHASE II

Au Anomaly Surface Map,
Jambusan-Tai Parit Area



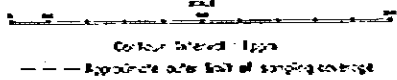
JAPAN INTERNATIONAL COOPERATION AGENCY
METAL MINING AGENCY OF JAPAN
GEOLOGICAL SURVEY OF MALAYSIA

MAP I-14 Ag ANOMALY SURFACE MAP



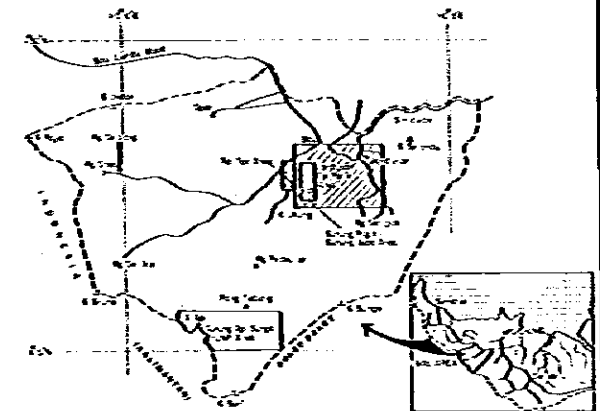
SW 3507 84

JAMBUSAN-TAI PARIT AREA



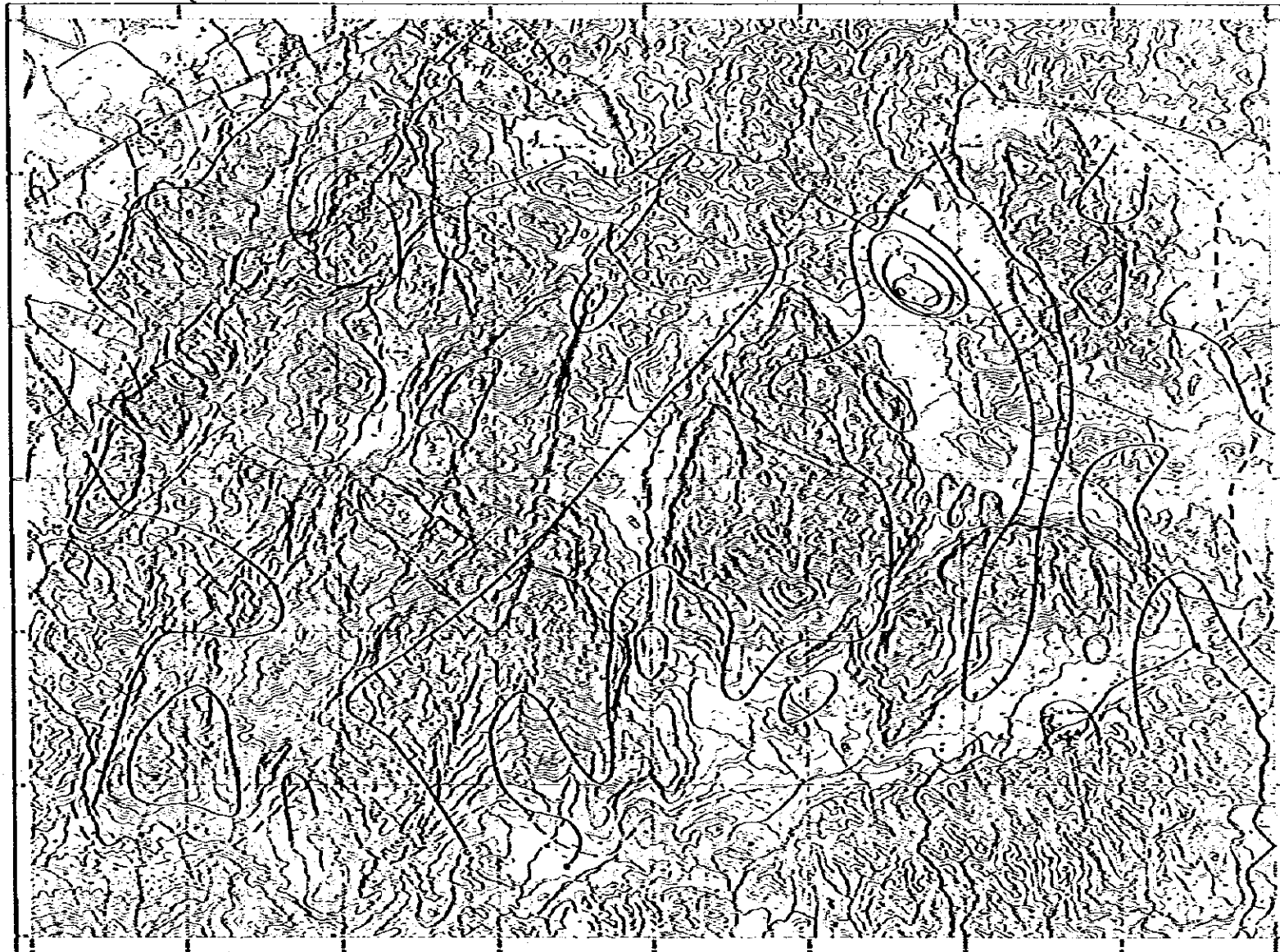
資源調査隊
10445
E
Map I-14

MINERAL EXPLORATION
BAU AREA
WEST SARAWAK, MALAYSIA
PHASE II
Ag Anomaly Surface Map,
Jambusan-Tai Parit Area



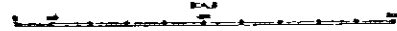
JAPAN INTERNATIONAL COOPERATION AGENCY
METAL MINING AGENCY OF JAPAN
GEOLOGICAL SURVEY OF MALAYSIA

MAP I-15 Cu ANOMALY SURFACE MAP



SW 0567.24

JAMBUSAN-TAI PARIT AREA



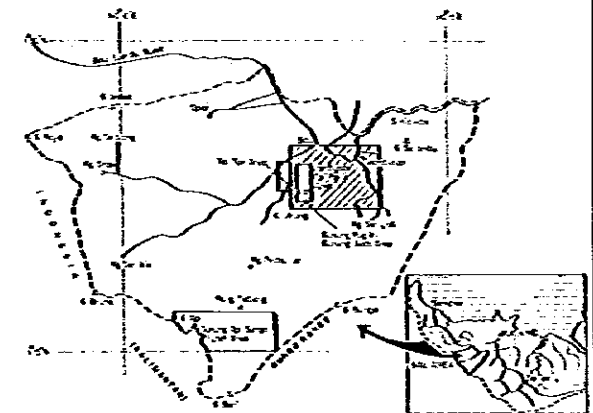
Contour interval - 5ppm

--- Approach over limit of sampling coverage

10445
10445
10445

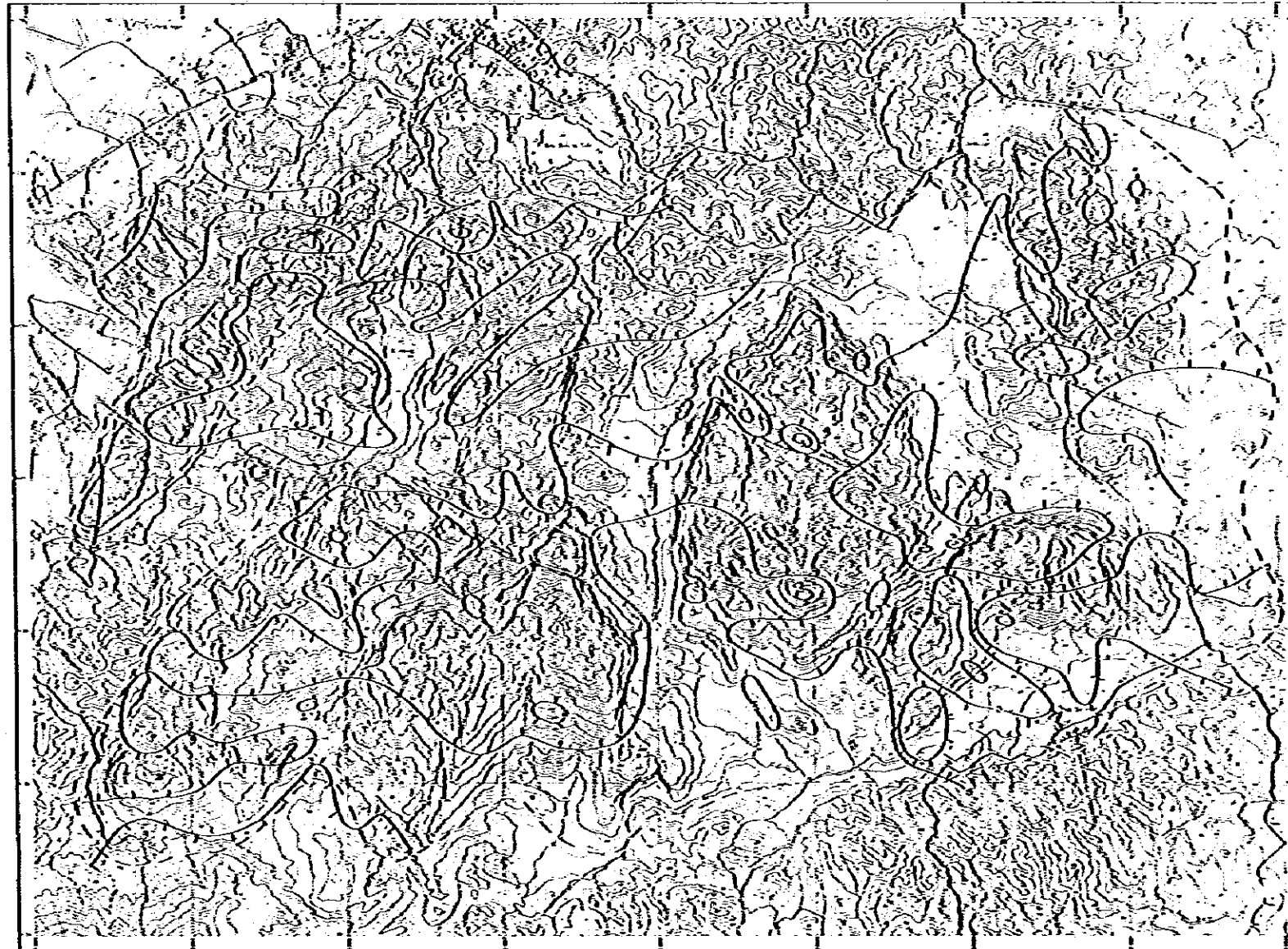
MINERAL EXPLORATION
BAU AREA
WEST SARAWAK, MALAYSIA
PHASE II

Cu Anomaly Surface Map,
Jambuson-Tai Parit Area



JAPAN INTERNATIONAL COOPERATION AGENCY
METAL MINING AGENCY OF JAPAN
GEOLOGICAL SURVEY OF MALAYSIA

MAP I-16 Pb ANOMALY SURFACE MAP



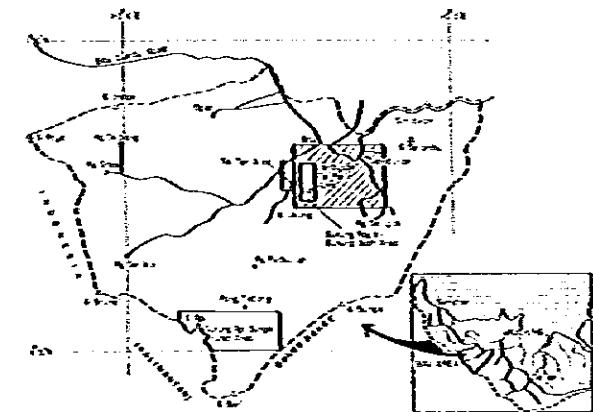
SW 3547. 83

JAMBUSAN-TAI PARIT AREA

Contour interval: 500m
--- Approximate outer limit of sampling coverage

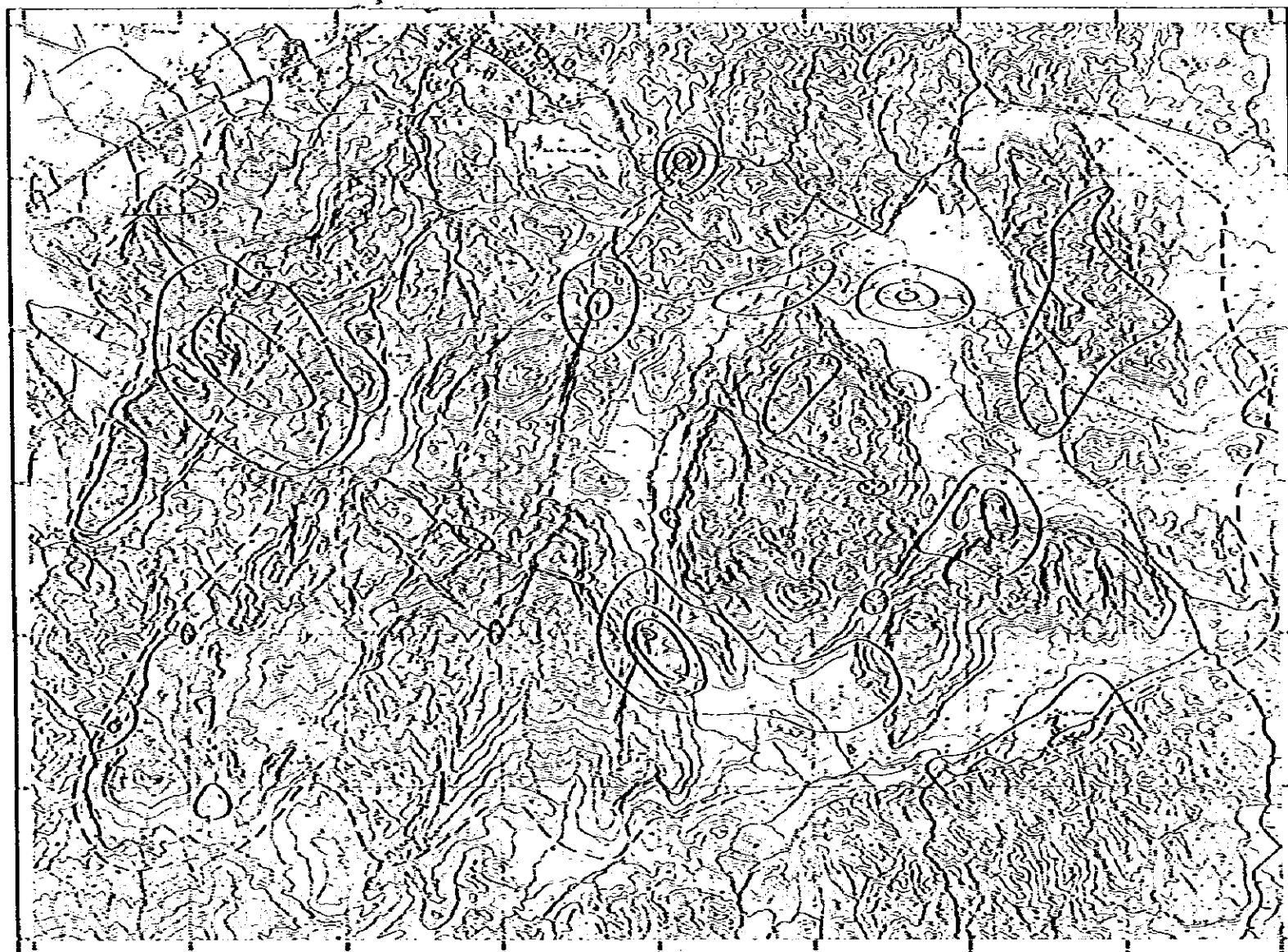
10495
Map I-16

MINERAL EXPLORATION
BAU AREA
WEST SARAWAK, MALAYSIA
PHASE II
Pb Anomaly Surface Map,
Jambusan-Tai Parit Area



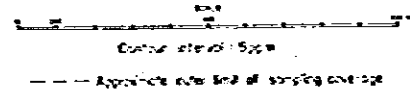
JAPAN INTERNATIONAL COOPERATION AGENCY
METAL MINING AGENCY OF JAPAN
GEOLOGICAL SURVEY OF MALAYSIA

MAP I-17 Zn ANOMALY SURFACE MAP



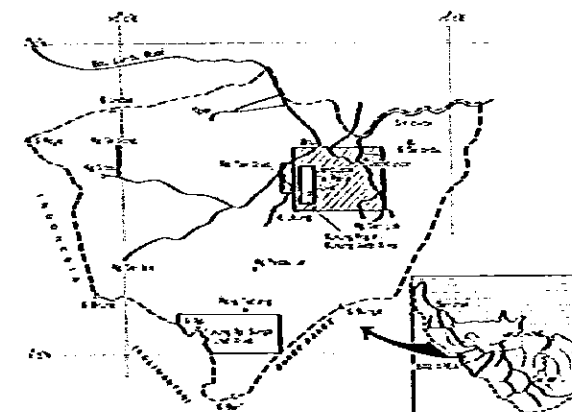
SW 3557 84

JAMBUSAN-TAI PARIT AREA



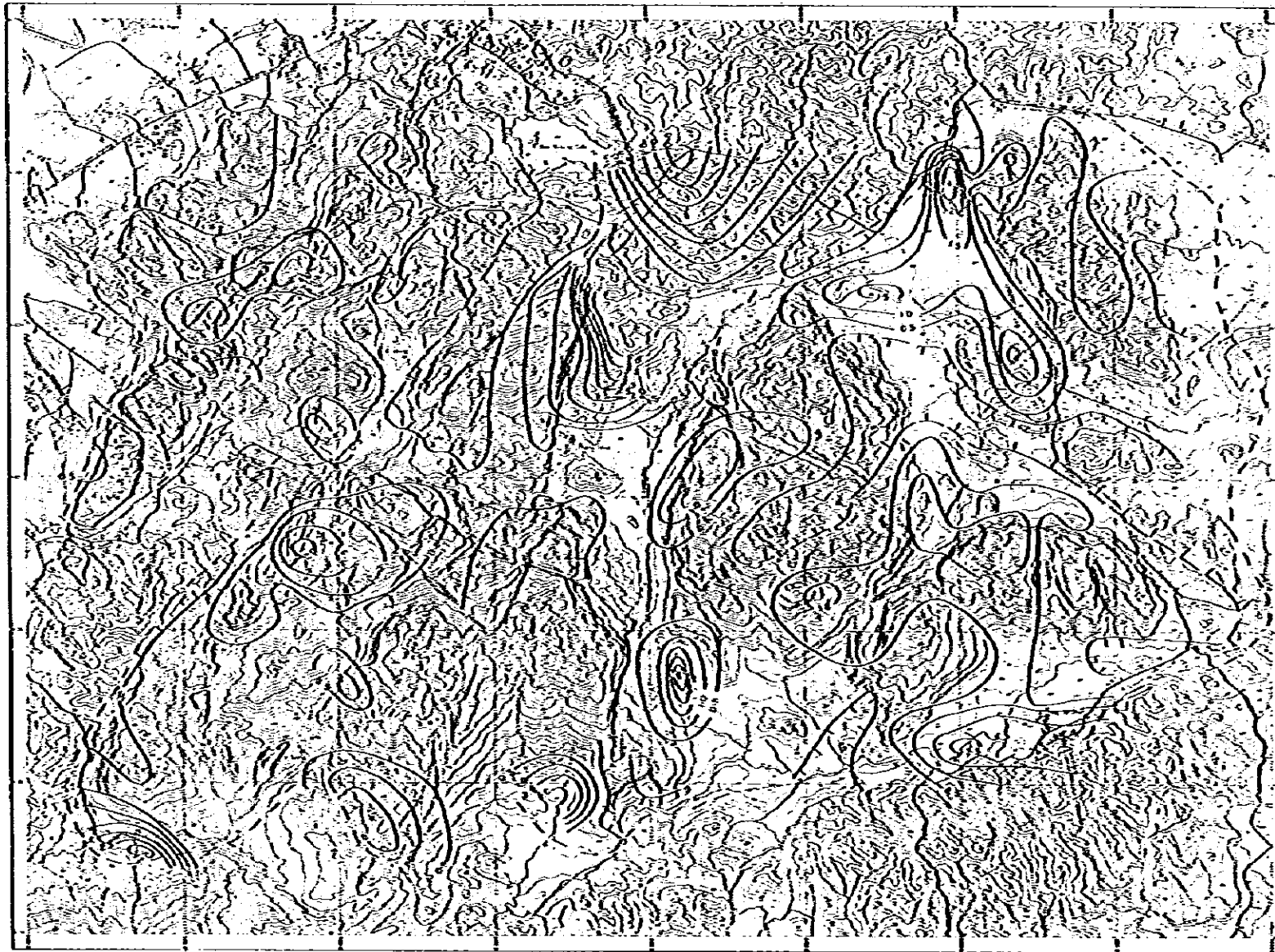
日本国際協力機構
10995
西貢地質調査所
Map I-17

MINERAL EXPLORATION
BAU AREA
WEST SARAWAK, MALAYSIA
PHASE II
Zn Anomaly Surface Map,
Jambusan-Tai Parit Area



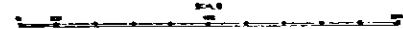
JAPAN INTERNATIONAL COOPERATION AGENCY
METAL MINING AGENCY OF JAPAN
GEOLOGICAL SURVEY OF MALAYSIA

MAP I-18 M₀ ANOMALY SURFACE MAP



50 243 7 88

JAMBUSAN-TAI PARIT AREA



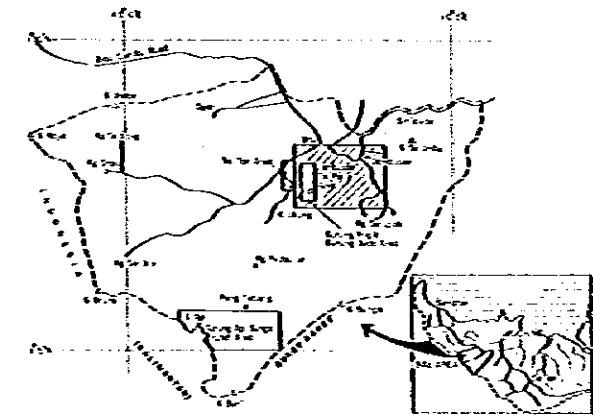
Contour interval: 0.5 ppm

--- Approximate east limit of sampling coverage

50744 分 大 図
10495
22 10495-18

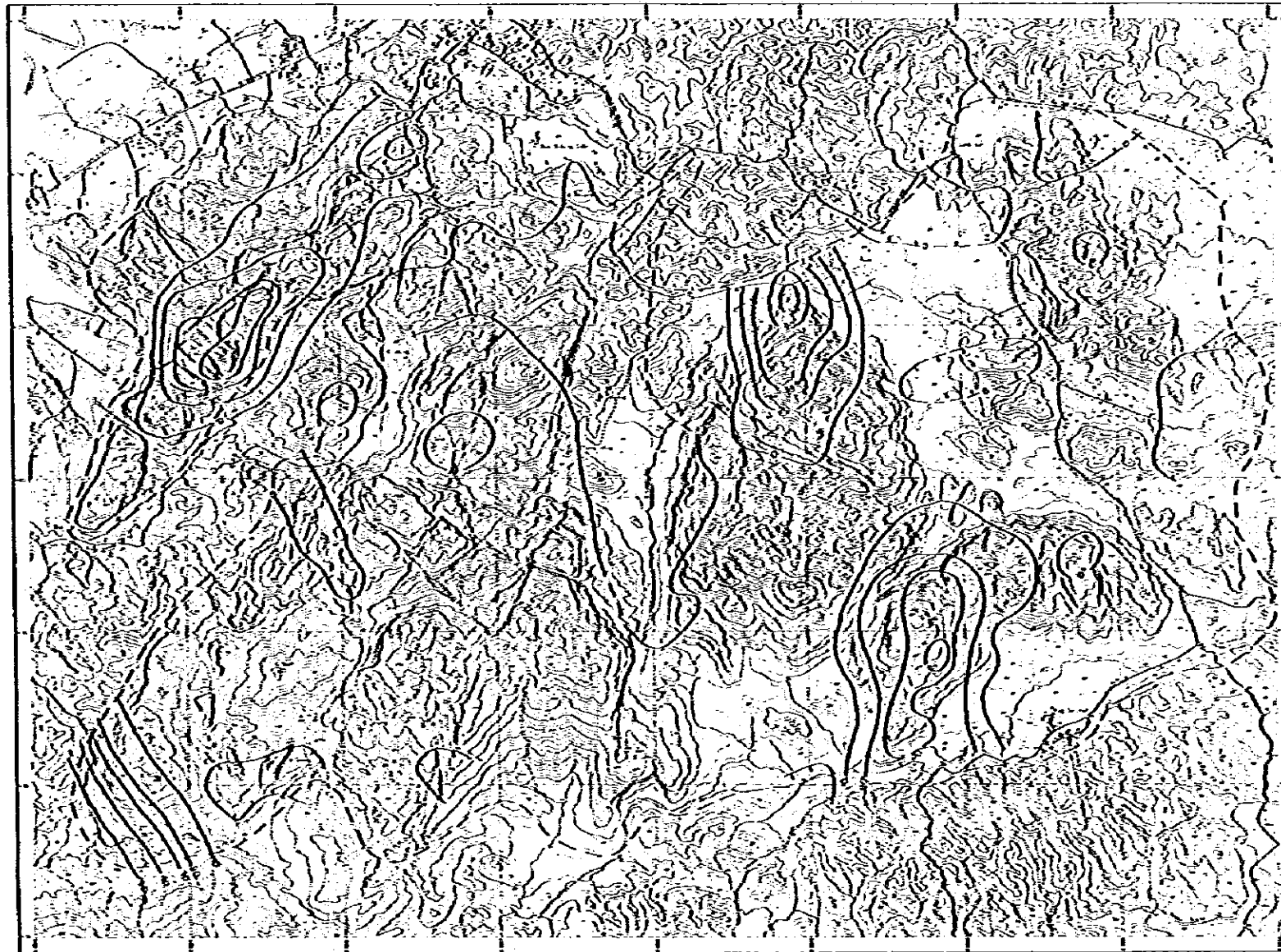
MINERAL EXPLORATION
BAU AREA
WEST SARAWAK, MALAYSIA
PHASE II

M₀ Anomaly Surface Map,
Jambuson - Tai Parit Area



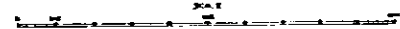
JAPAN INTERNATIONAL COOPERATION AGENCY
METAL MINING AGENCY OF JAPAN
GEOLOGICAL SURVEY OF MALAYSIA

MAP I-19 As ANOMALY SURFACE MAP



SW 041724

JAMBUSAN-TAI PARIT AREA



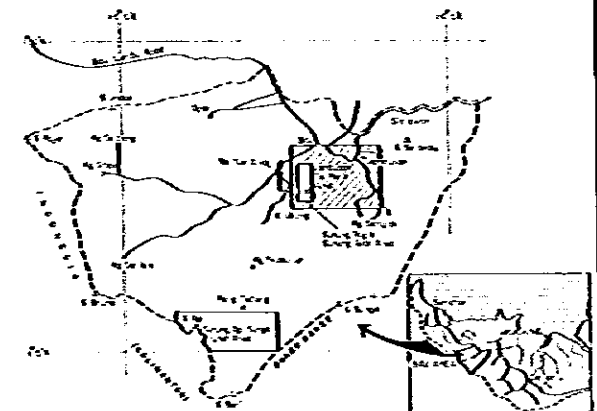
Contour Interval - 10 ppm

--- Approximate outer limit of sampling coverage

資源協力事業団
 10年85
 西貢地質調査
 Map I-19

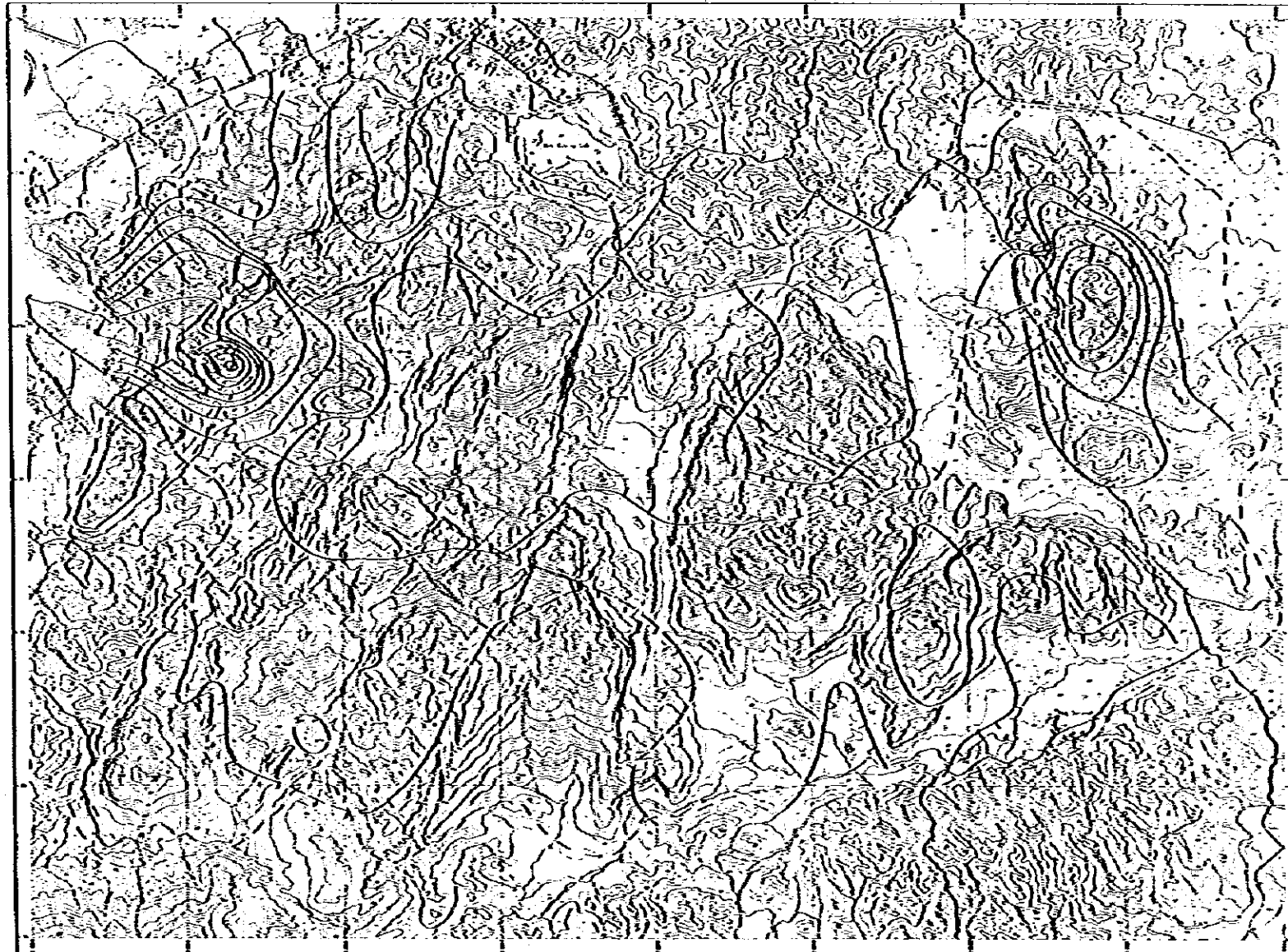
MINERAL EXPLORATION
 BAW AREA
 WEST SARAWAK, MALAYSIA
 PHASE II

As Anomaly Surface Map,
 Jambusan-Tai Parit Area



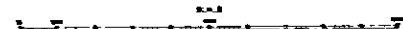
JAPAN INTERNATIONAL COOPERATION AGENCY
 METAL MINING AGENCY OF JAPAN
 GEOLOGICAL SURVEY OF MALAYSIA

MAP I-20 Sb ANOMALY SURFACE MAP



19-20-2-24

JAMBUSAN-TAI PARIT AREA



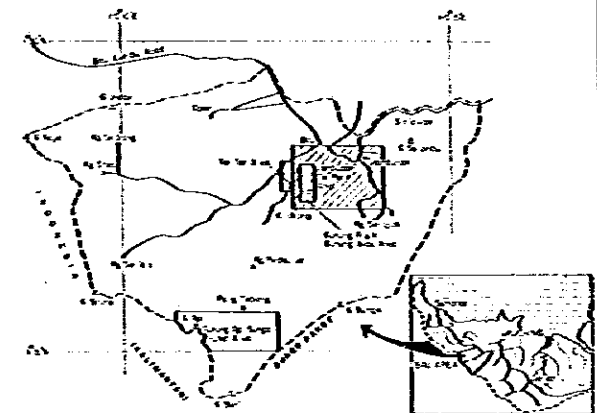
Contour interval: 5pp

--- Approximate outer limit of magnetic coverage

国字標力事見録
10445
28
Map I-20

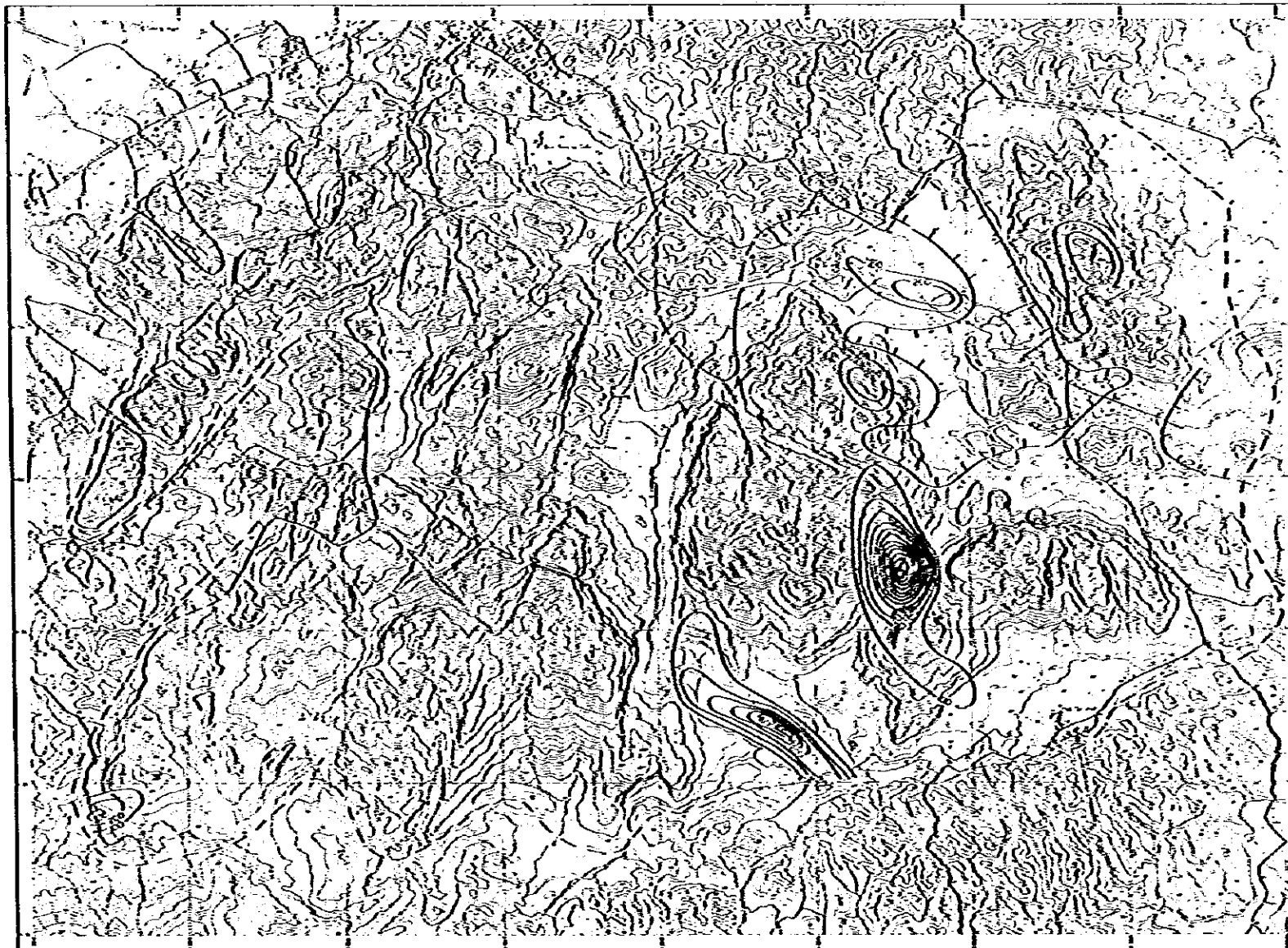
MINERAL EXPLORATION
BAU AREA
WEST SARAWAK, MALAYSIA
PHASE II

Sb Anomaly Surface Map,
Jambusan-Tai Parit Area



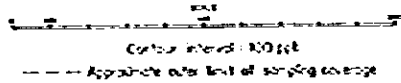
JAPAN INTERNATIONAL COOPERATION AGENCY
METAL MINING AGENCY OF JAPAN
GEOLOGICAL SURVEY OF MALAYSIA

MAP I-21 Hg ANOMALY SURFACE MAP



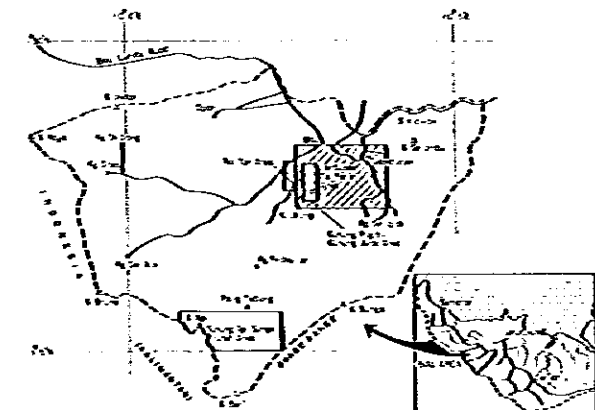
SW 350/21

JAMBUSAN-TAI PARIT AREA



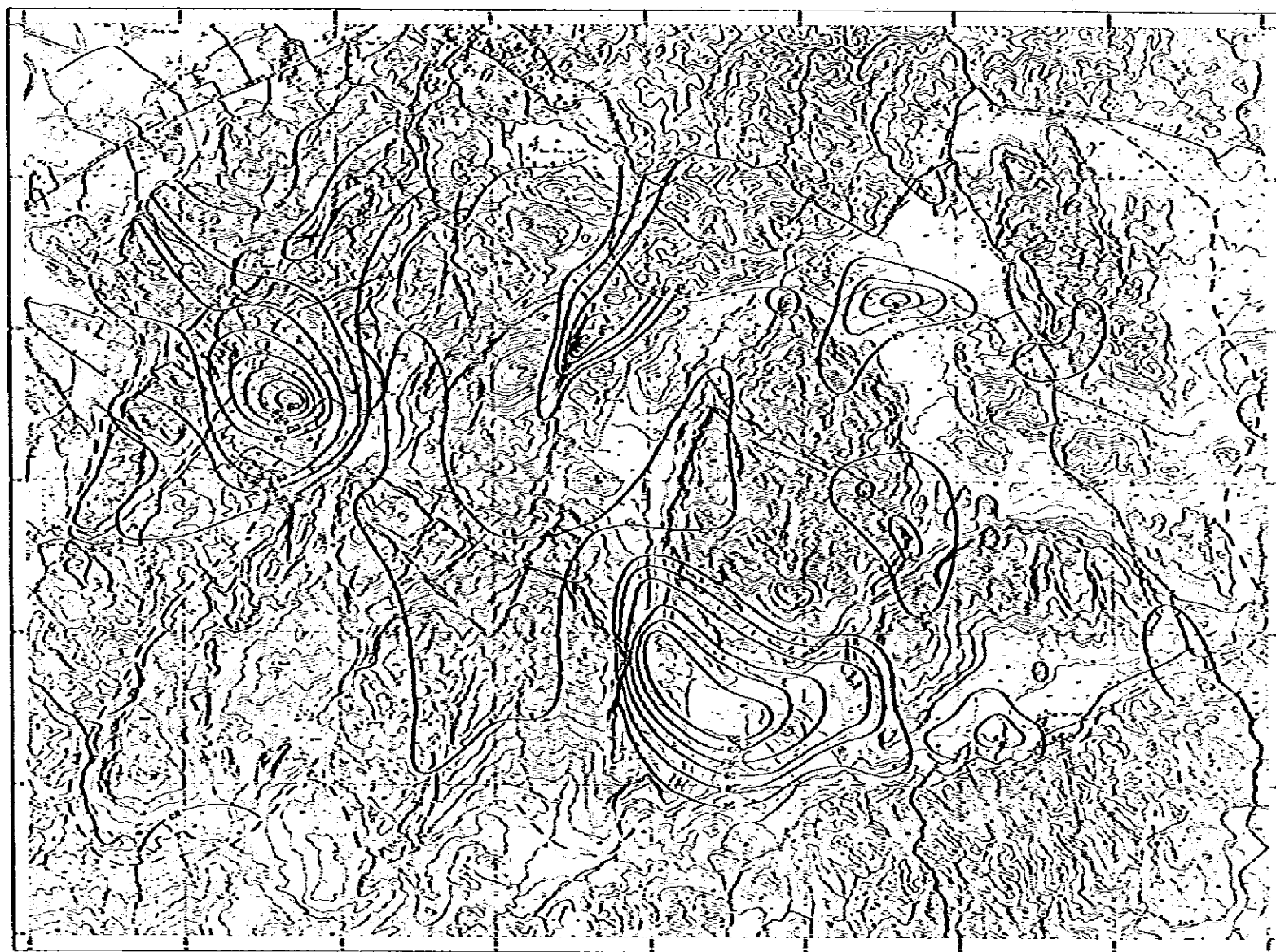
国営協力事業団
1995
11月
Map I-21

MINERAL EXPLORATION
BAU AREA
WEST SARAWAK, MALAYSIA
PHASE II
Hg Anomaly Surface Map,
Jambusan-Tai Parit Area

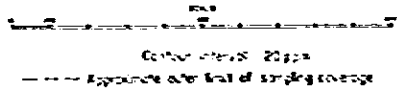


JAPAN INTERNATIONAL COOPERATION AGENCY
METAL MINING AGENCY OF JAPAN
GEOLOGICAL SURVEY OF MALAYSIA

MAP I-22 Mn ANOMALY SURFACE MAP

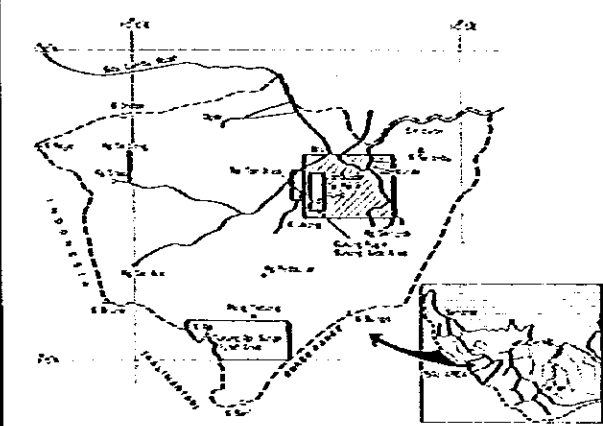


JAMBUSAN-TAI PARIT AREA



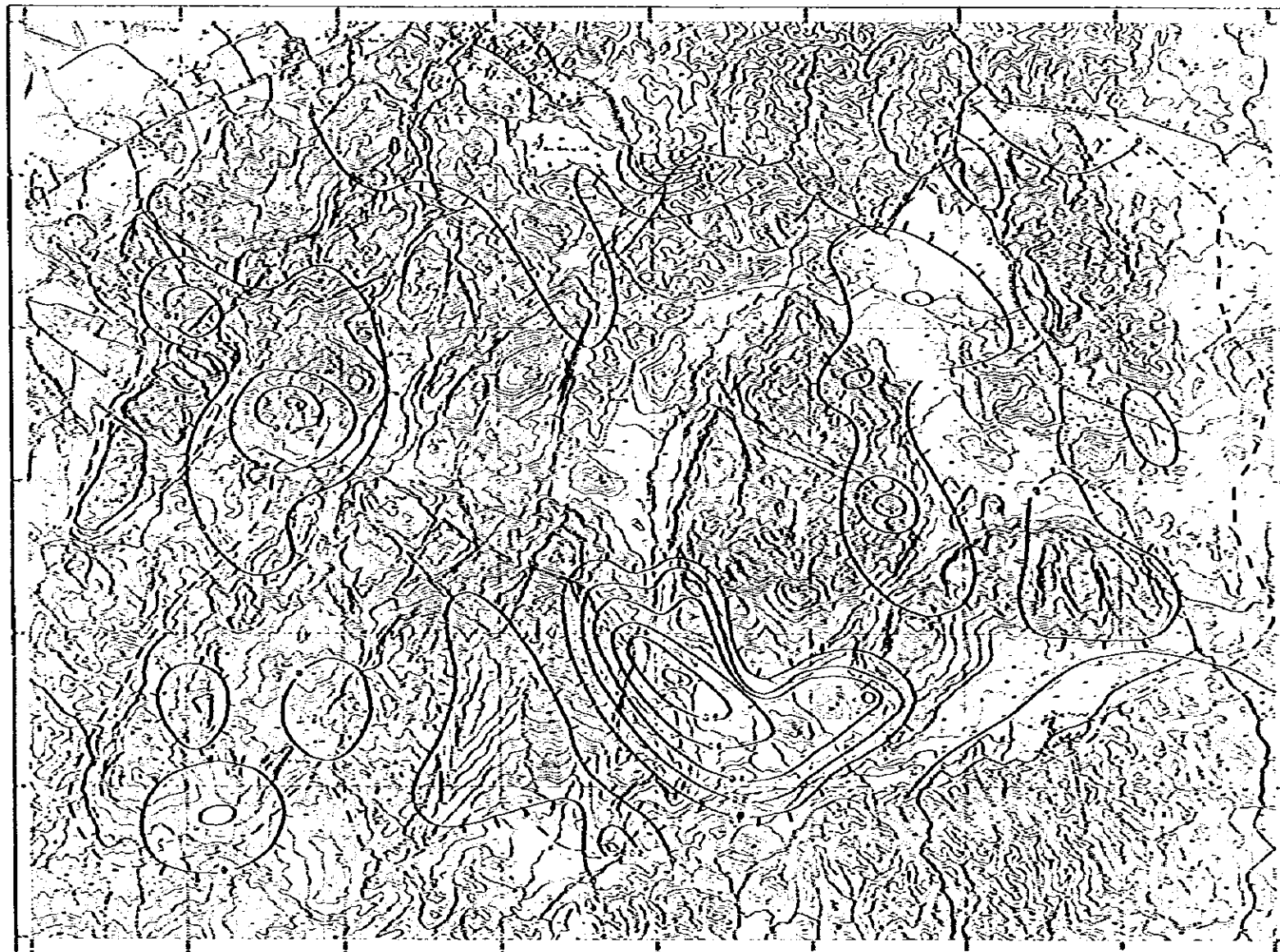
國際協力事業団
1945
国行地質研究所
Map I-22

MINERAL EXPLORATION
BAU AREA
WEST SARAWAK, MALAYSIA
PHASE II
Mn Anomaly Surface Map,
Jambusan-Tai Parit Area



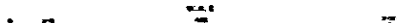
JAPAN INTERNATIONAL COOPERATION AGENCY
METAL MINING AGENCY OF JAPAN
GEOLOGICAL SURVEY OF MALAYSIA

MAP I-23 Fe ANOMALY SURFACE MAP



SW 3527/14

JAMBUSAN-TAI PARIT AREA

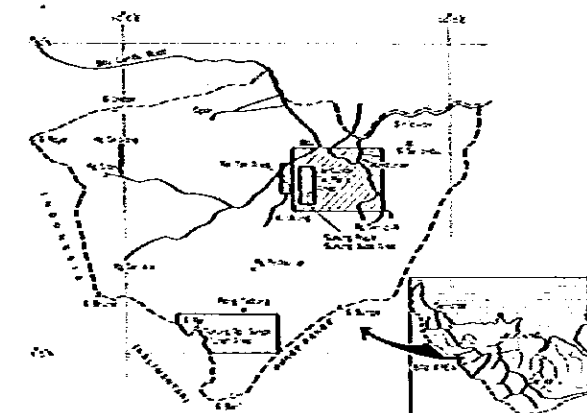


Contour Interval - 0.2%

--- Approximate outer limit of sampling coverage

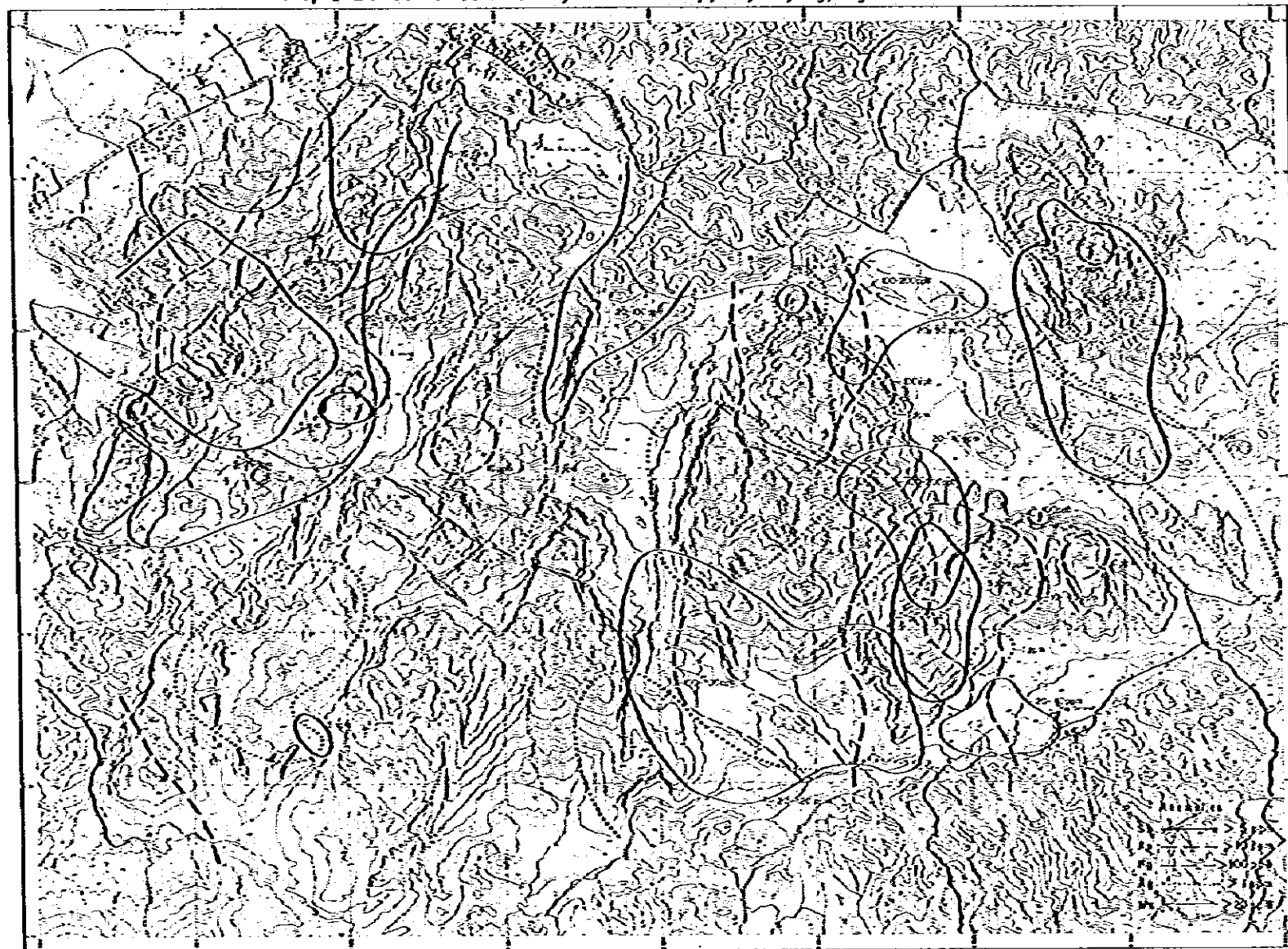
10785
Map I-23

MINERAL EXPLORATION
BAU AREA
WEST SARAWAK, MALAYSIA
PHASE II
Fe Anomaly Surface Map,
Jambusan-Tai Parit Area

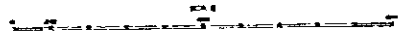


JAPAN INTERNATIONAL COOPERATION AGENCY
METAL MINING AGENCY OF JAPAN
GEOLOGICAL SURVEY OF MALAYSIA

Mop I-24 Combined Anomaly Surface Map, Sb, As, Hg, Ag and Mn



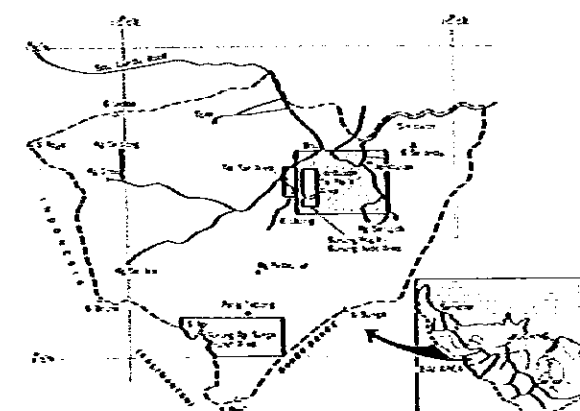
JAMBUSAN-TAI PARIT AREA



地理協力事業団
10395
図表 10395

MINERAL EXPLORATION
BAU AREA
WEST SARAWAK, MALAYSIA
PHASE II

Combined Anomaly Surface Map
Sb, As, Hg, Ag and Mn



JAPAN INTERNATIONAL COOPERATION AGENCY
METAL MINING AGENCY OF JAPAN
GEOLOGICAL SURVEY OF MALAYSIA