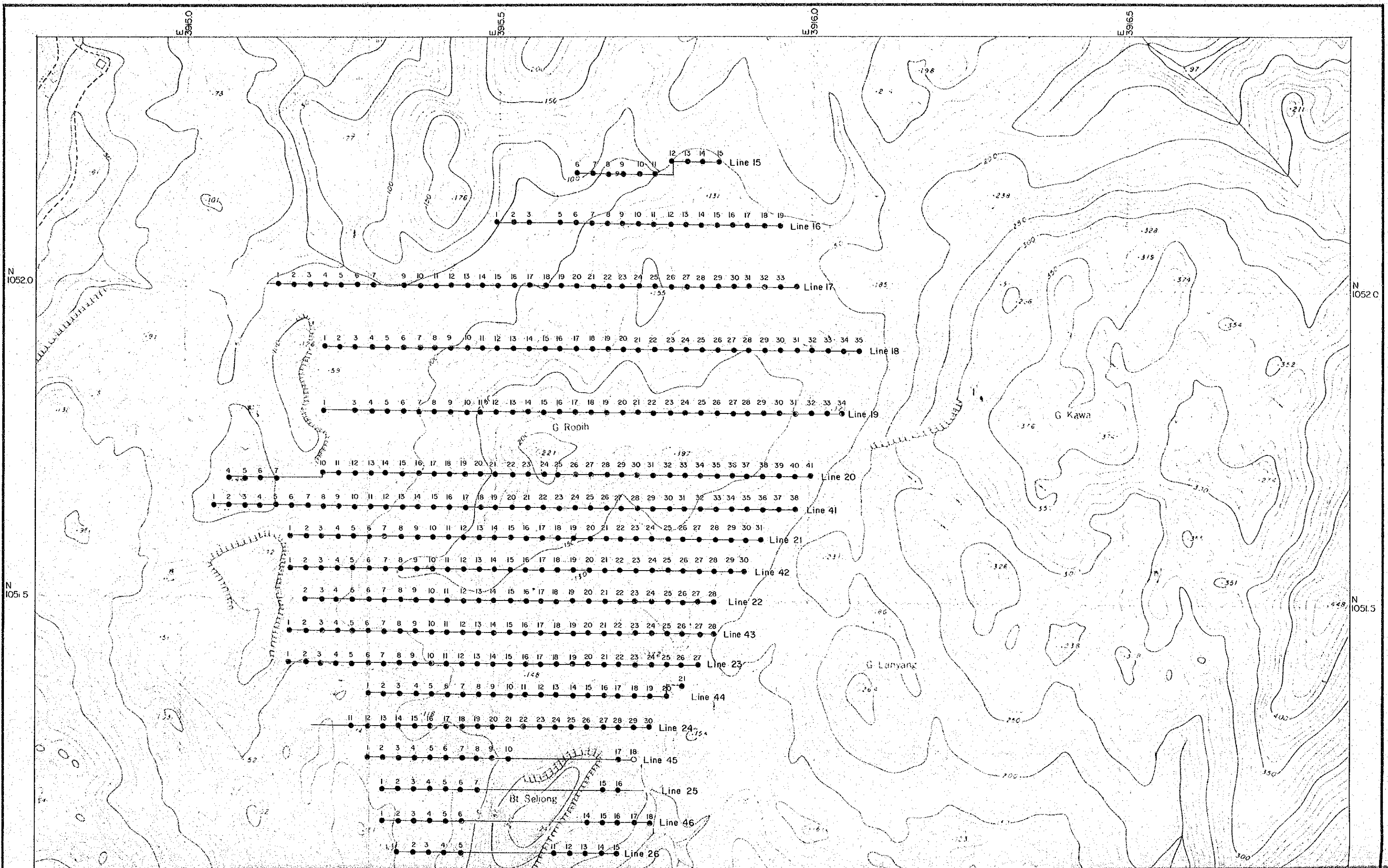
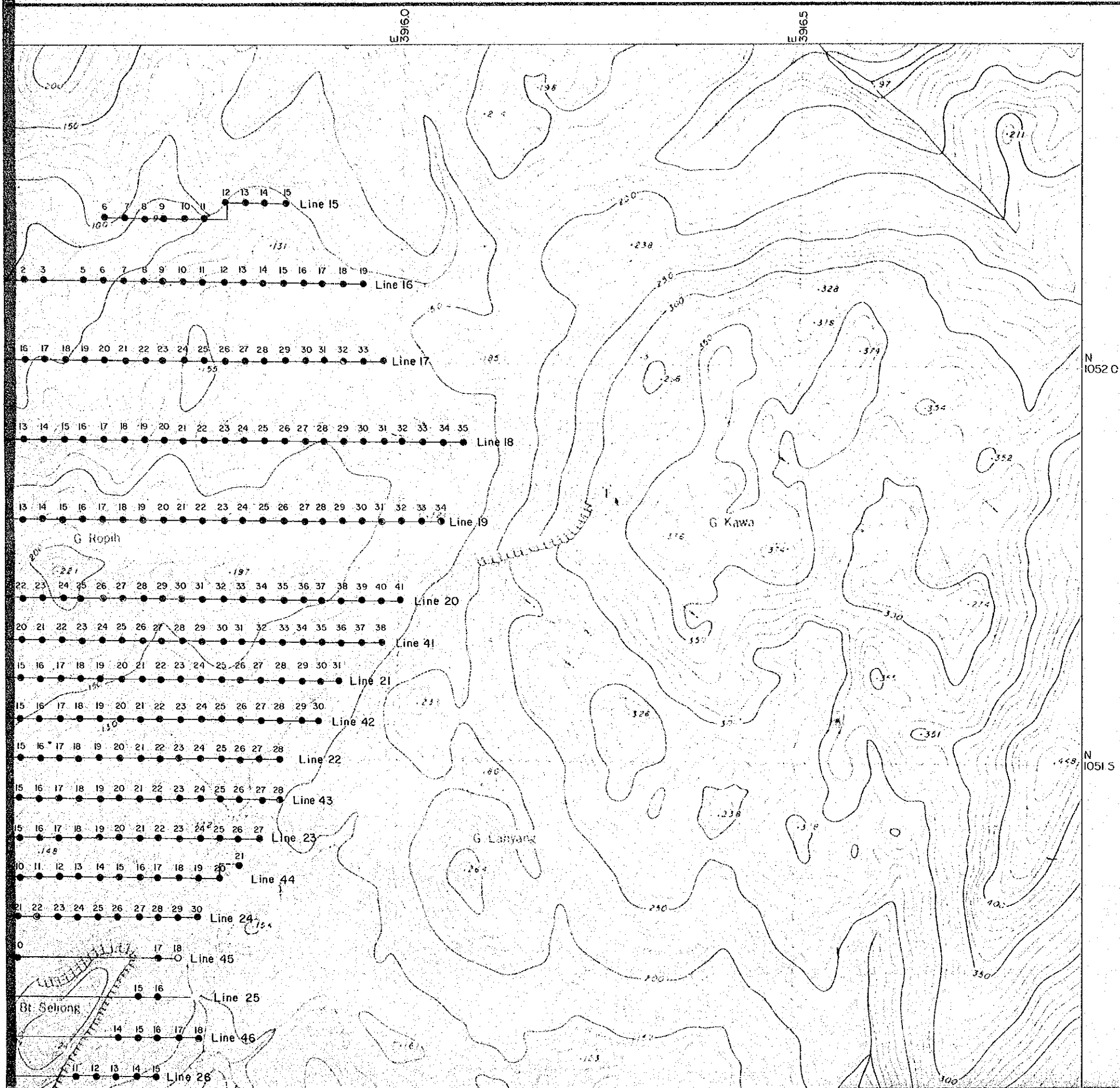


G. ROPIH  
MAP I-53 LOCATION MAP OF SOIL SAMPLES

国際協力  
10  
図書資料



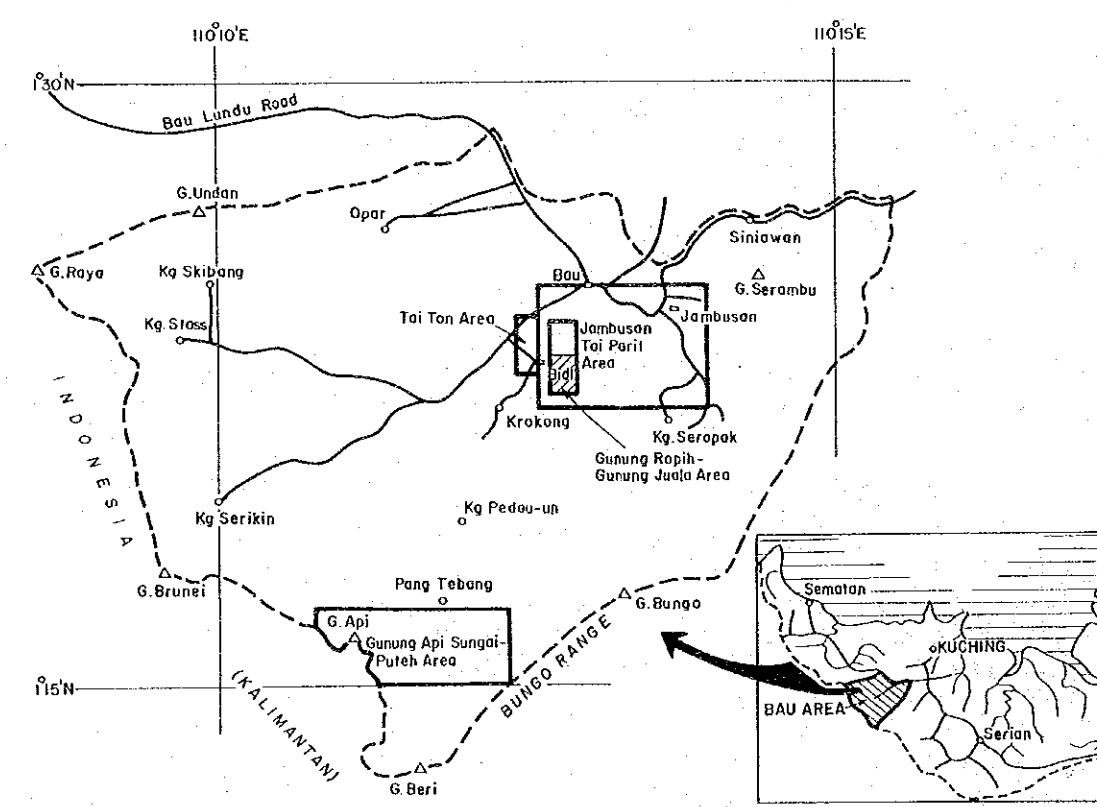
G. ROPIH  
LOCATION MAP OF SOIL SAMPLES



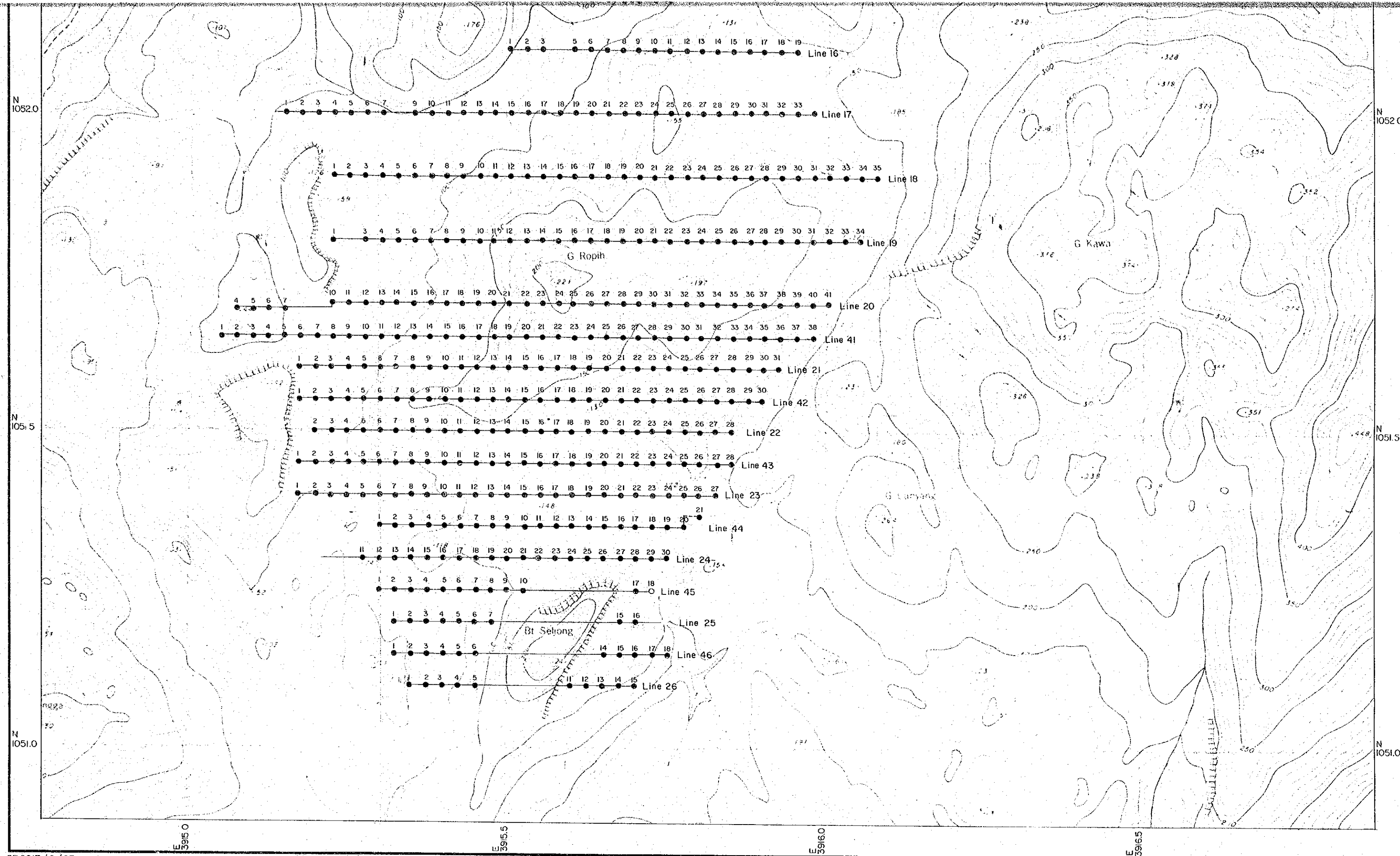
国際協力事業団  
10445  
図書資料Map 53

MINERAL EXPLORATION  
BAU AREA  
WEST SARAWAK, MALAYSIA  
PHASE II

Location Map of Soil Samples  
Gunung Ropih



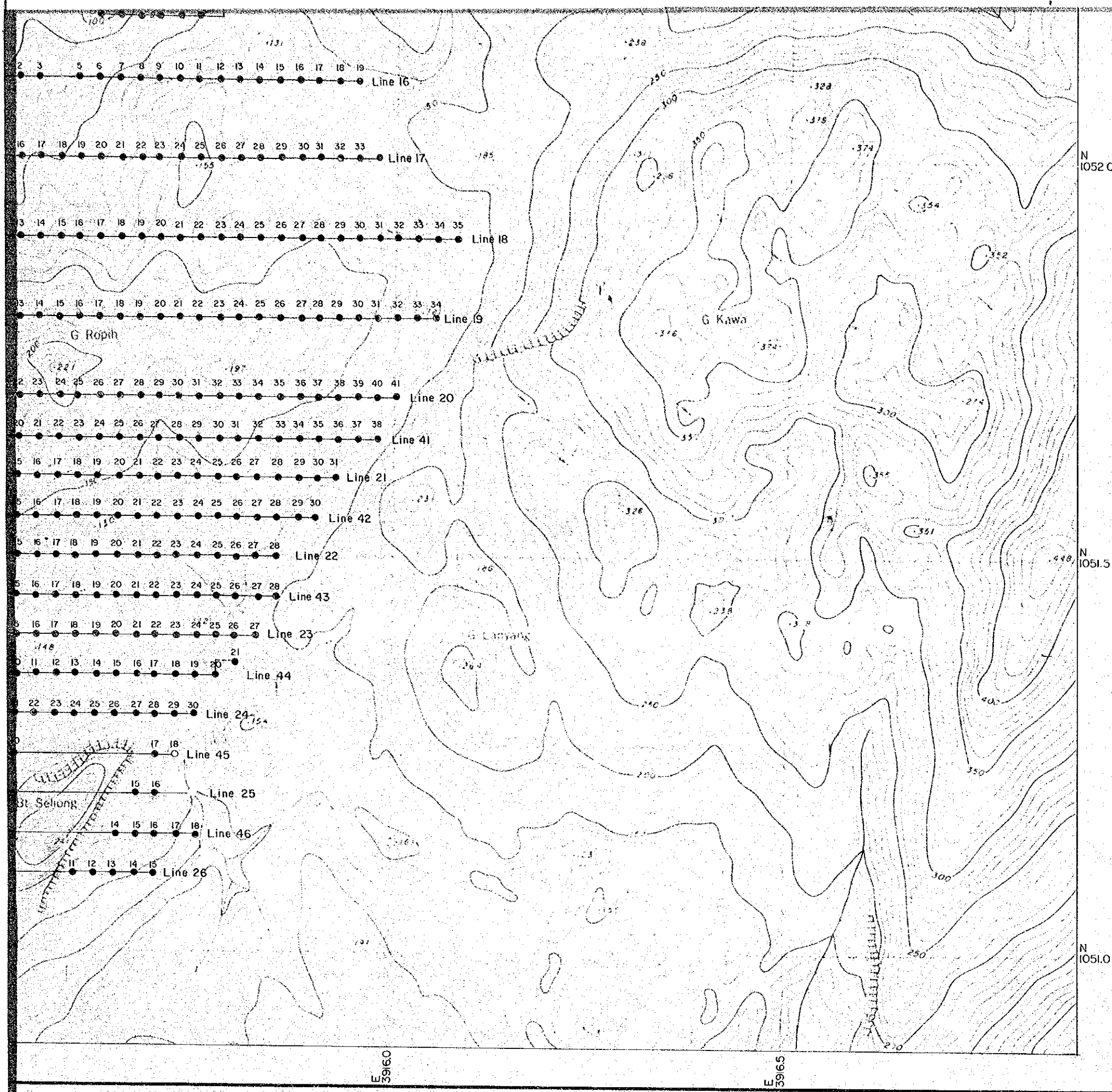
JAPAN INTERNATIONAL COOPERATION AGENCY  
METAL MINING AGENCY OF JAPAN  
GEOLOGICAL SURVEY OF MALAYSIA



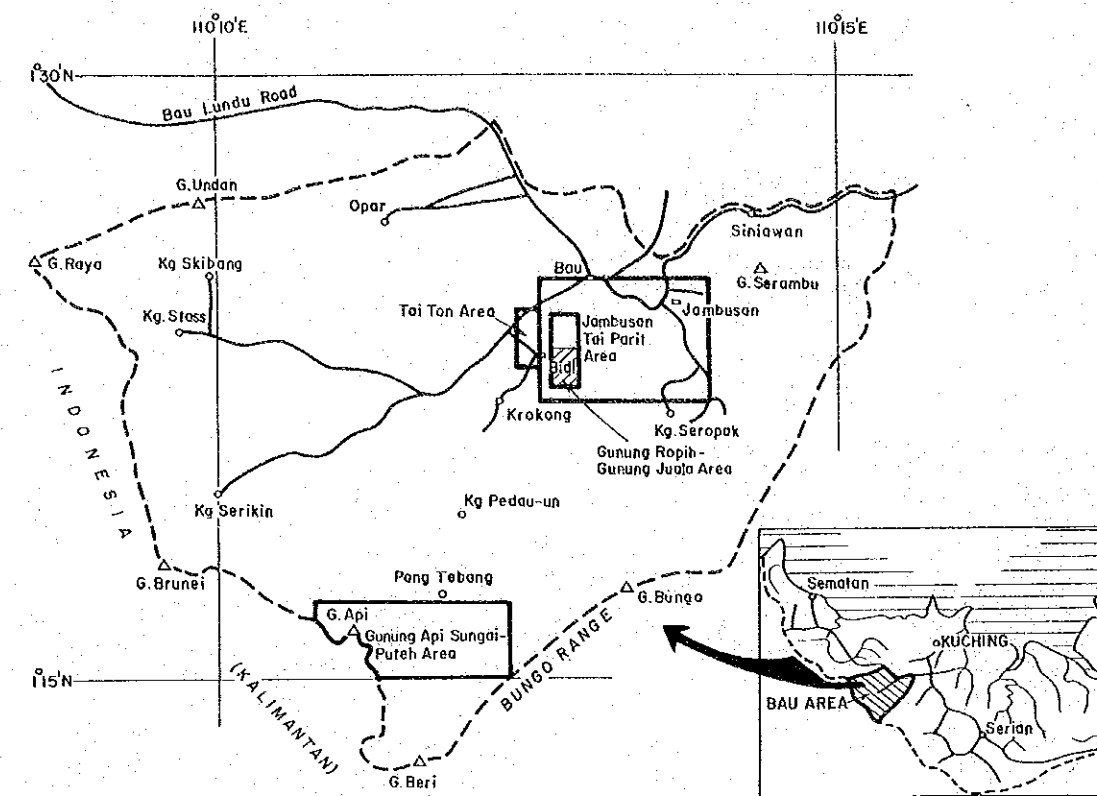
SP 2617 / 8 / 83

SCALE : 1 : 5,000

2  
 along line 16 : means sample location with sample no. YL 1602.  
 YL is sample identification initials, 16 refers to line  
 no. and 02 sample no. along the line.



## Location Map of Soil Samples Gunung Ropih



JAPAN INTERNATIONAL COOPERATION AGENCY  
METAL MINING AGENCY OF JAPAN  
GEOLOGICAL SURVEY OF MALAYSIA

SCALE : 1 : 5,000

line 16 : means sample location with sample no. YL 1602.  
YL is sample identification initials, 16 refers to line no. and 02 sample no. along the line.

JICA

K-70