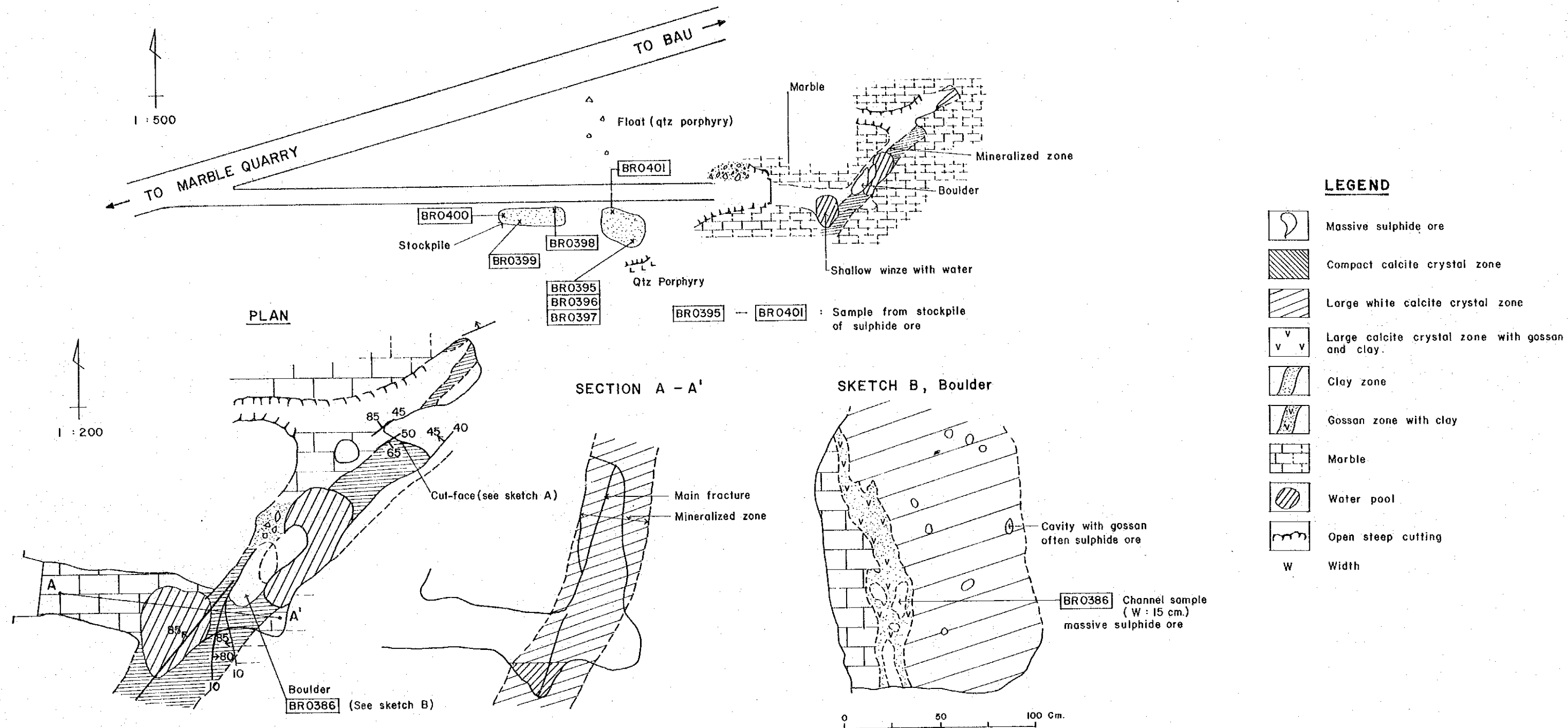
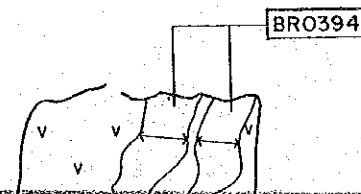


MAP I-37 GUNUNG TONGGA ORE DEPOSIT AND GUNUNG SIRIUNG MINERAL OCCURRENCE

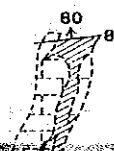
GUNUNG TONGGA ORE DEPOSIT



Sketch A, Cut - face
G. Tongga Ore Deposit

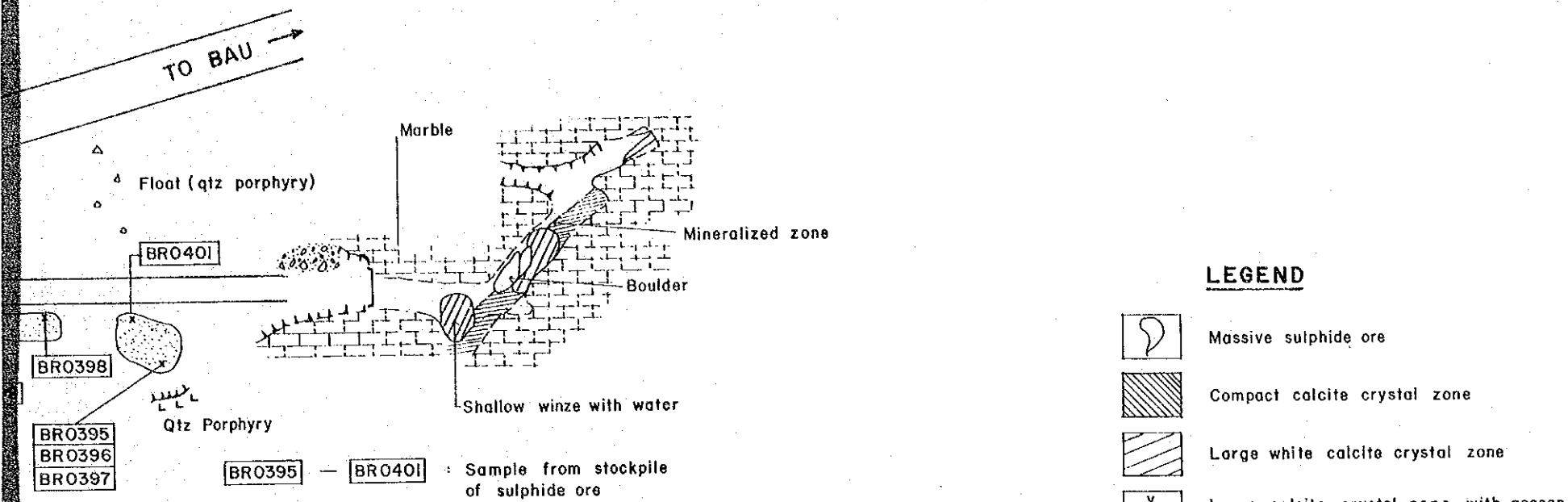


G. SIRIUNG ORE DEPOSIT



A ORE DEPOSIT AND GUNUNG SIRIUNG MINERAL OCCURRENCE

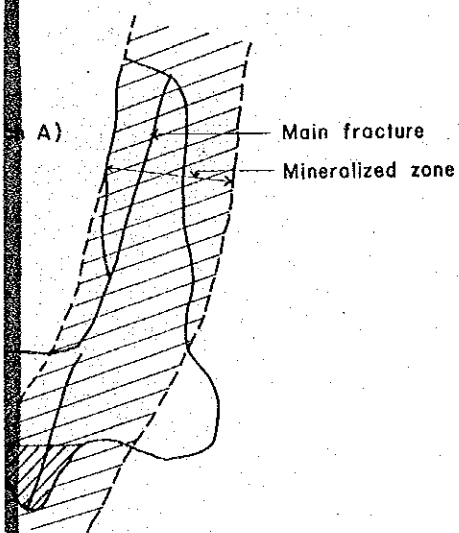
GUNUNG TONGGA ORE DEPOSIT



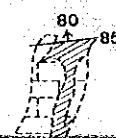
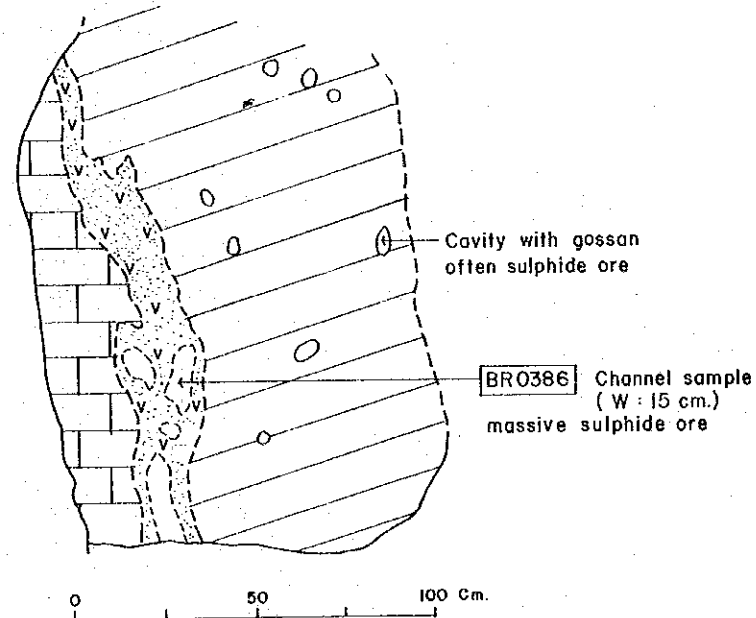
LEGEND

- Massive sulphide ore
- Compact calcite crystal zone
- Large white calcite crystal zone
- Large calcite crystal zone with gossan and clay
- Clay zone
- Gossan zone with clay
- Marble
- Water pool
- Open steep cutting
- W Width

SECTION A - A'



SKETCH B, Boulder



G. SIRIUNG ORE DEPOSIT

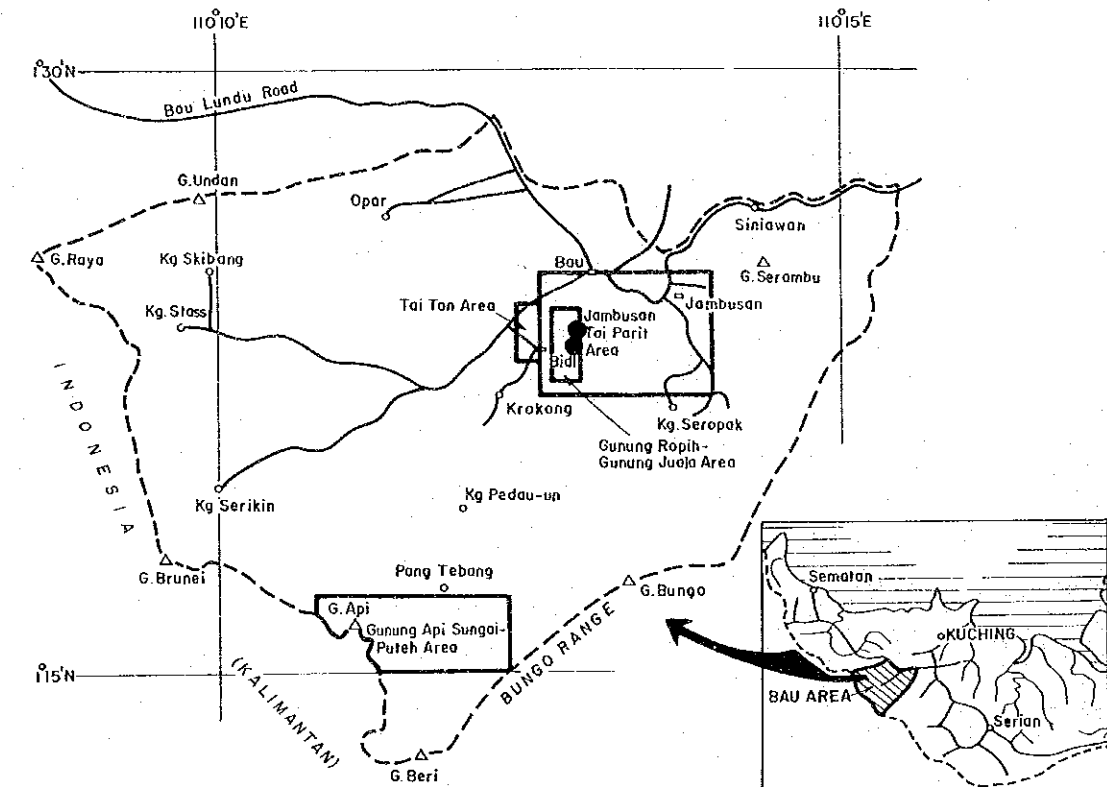
国際協力事業団

10445

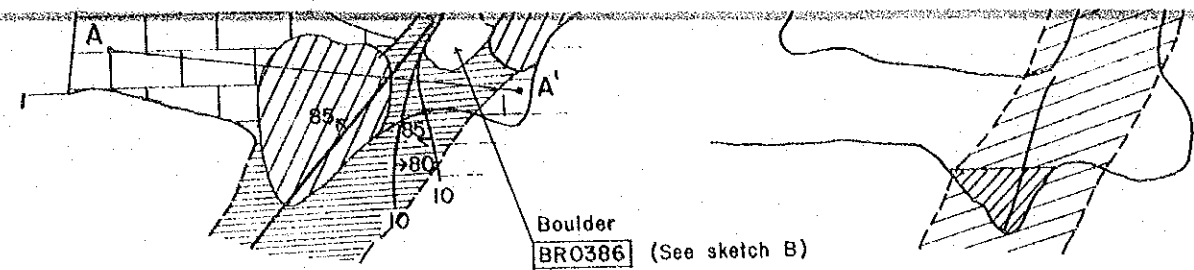
国書資料室蔵書
Map 1-37

MINERAL EXPLORATION
BAU AREA
WEST SARAWAK, MALAYSIA
PHASE II

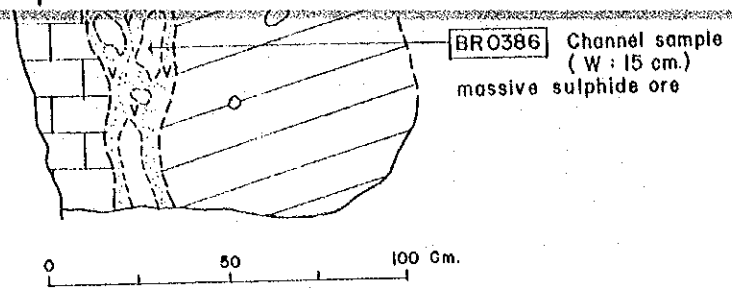
Gunung Tongga Ore Deposit and
Gunung Siriung Mineral Occurrence



JAPAN INTERNATIONAL COOPERATION AGENCY
METAL MINING AGENCY OF JAPAN
GEOLOGICAL SURVEY OF MALAYSIA

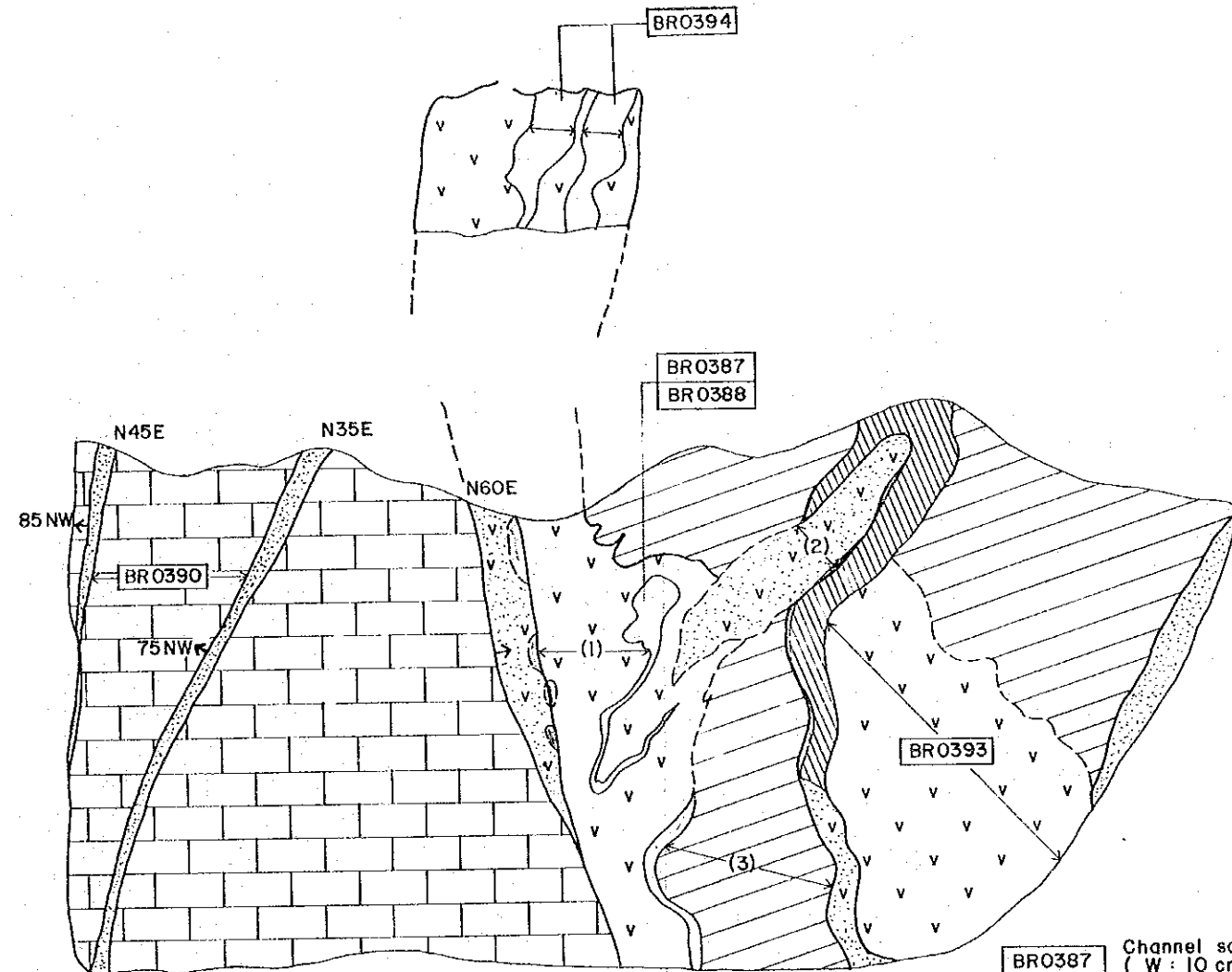


Boulder
BR0386 (See sketch B)



BR0386 Channel sample
(W : 15 cm.)
massive sulphide ore

Sketch A, Cut - face
G. Tongga Ore Deposit

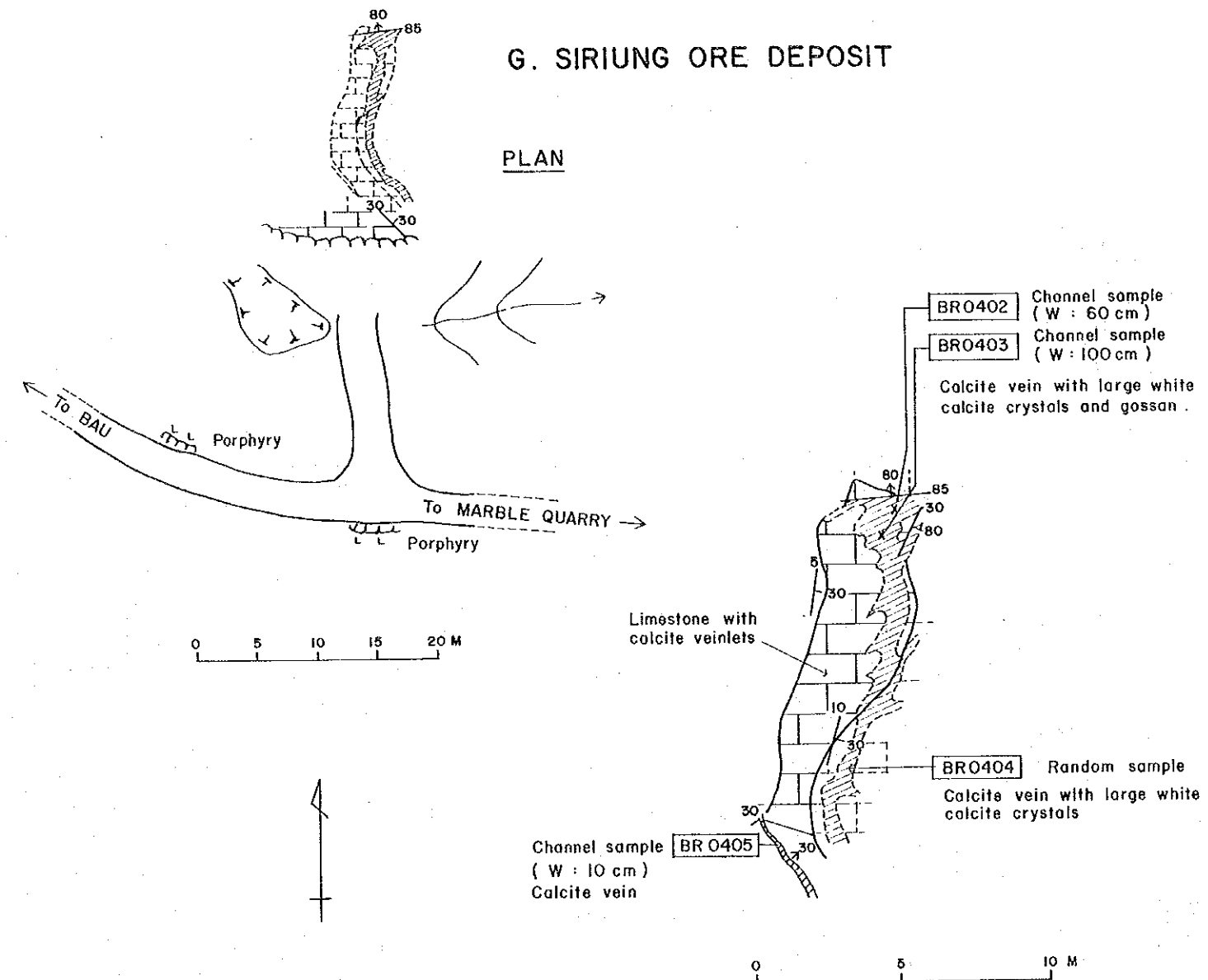


- (1) BR0389 Channel sample
(W : 30 cm.)
- (2) BR0391 Channel sample
(W : 15 cm)
- (3) BR0392 Channel sample
(W : 50 cm)

- BR0387 Channel sample
(W : 10 cm)
- BR0388 - do -
- BR0390 Channel sample
(W : 8 cm)
- BR0393 Channel sample
(W : 100 cm)
- BR0394 Channel sample
(W : 30 cm)

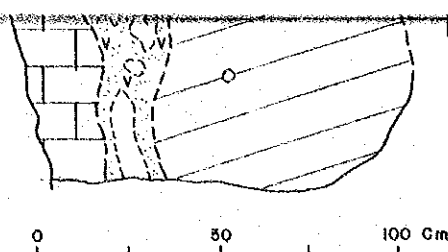
G. SIRIUNG ORE DEPOSIT

PLAN

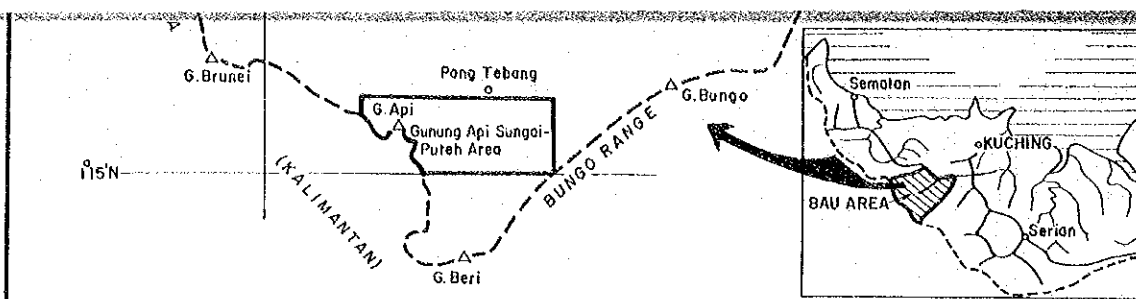


- BR0402 Channel sample
(W : 60 cm)
- BR0403 Channel sample
(W : 100 cm)
- Calcite vein with large white
calcite crystals and gossan.

- BR0404 Random sample
Calcite vein with large white
calcite crystals
- BR0405 Channel sample
(W : 10 cm)
Calcite vein



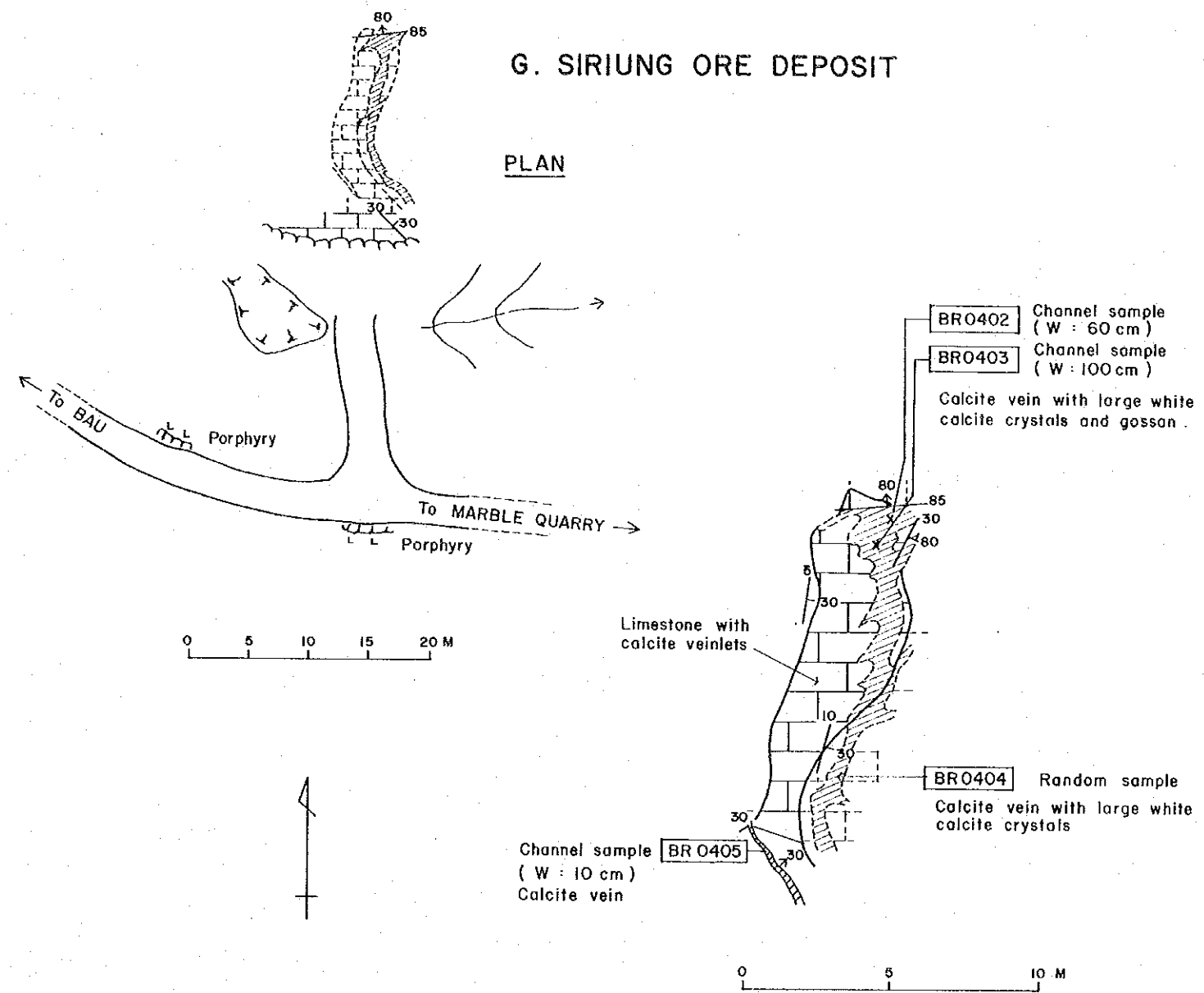
BR0385 Channel sample
(W: 15 cm.)
massive sulphide ore



JAPAN INTERNATIONAL COOPERATION AGENCY
METAL MINING AGENCY OF JAPAN
GEOLOGICAL SURVEY OF MALAYSIA

G. SIRIUNG ORE DEPOSIT

PLAN



BR0402 Channel sample
(W: 60 cm)

BR0403 Channel sample
(W: 100 cm)

Calcite vein with large white
calcite crystals and gossan.

BR0404 Random sample

Calcite vein with large white
calcite crystals

Channel sample BR0405
(W: 10 cm)
Calcite vein

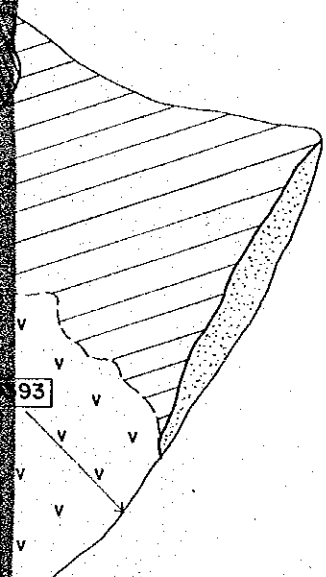
BR0387 Channel sample
(W: 10 cm)

BR0388 - do -

BR0390 Channel sample
(W: 8 cm)

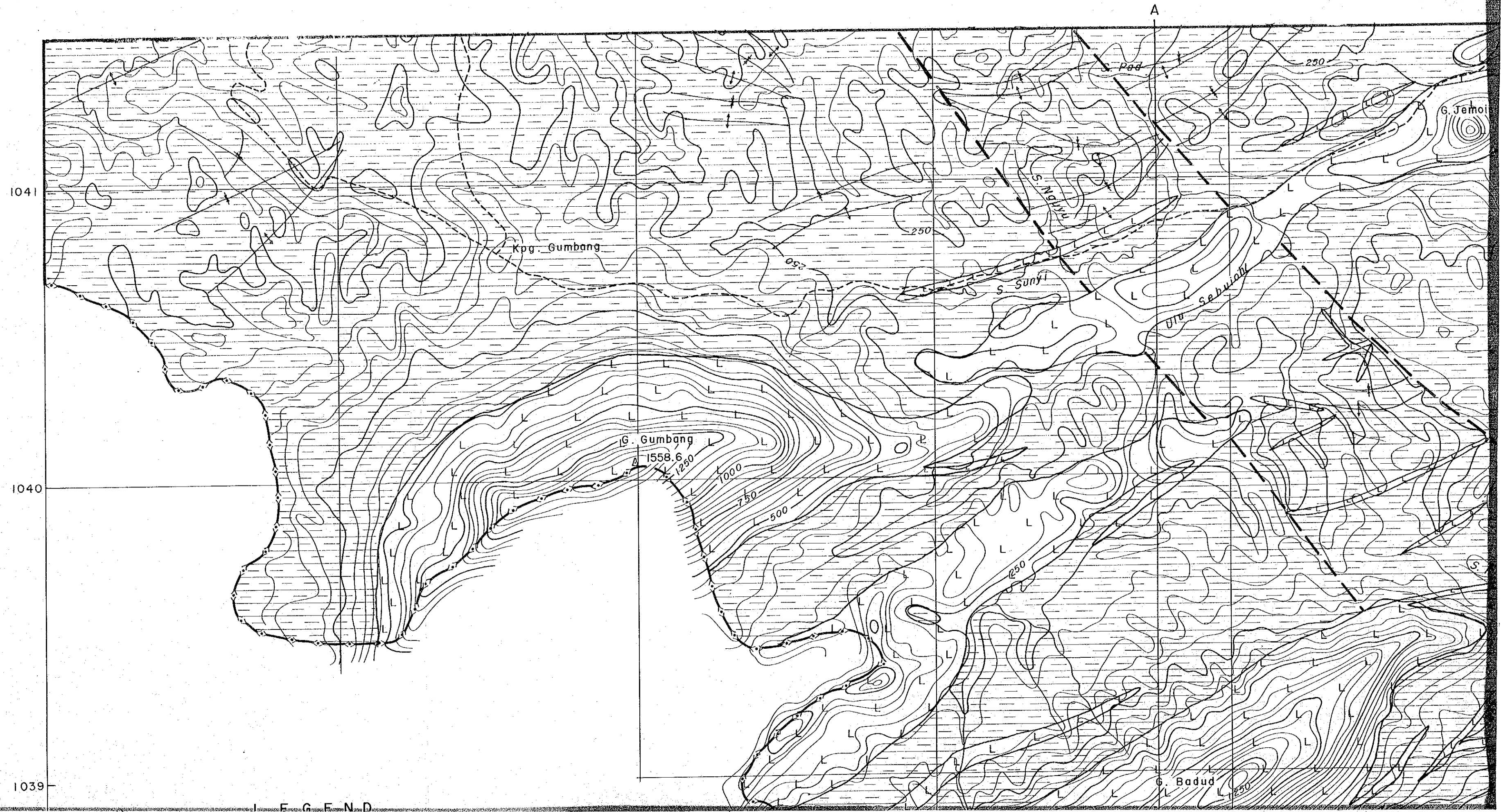
BR0393 Channel sample
(W: 100 cm)

BR0394 Channel sample
(W: 30 cm)



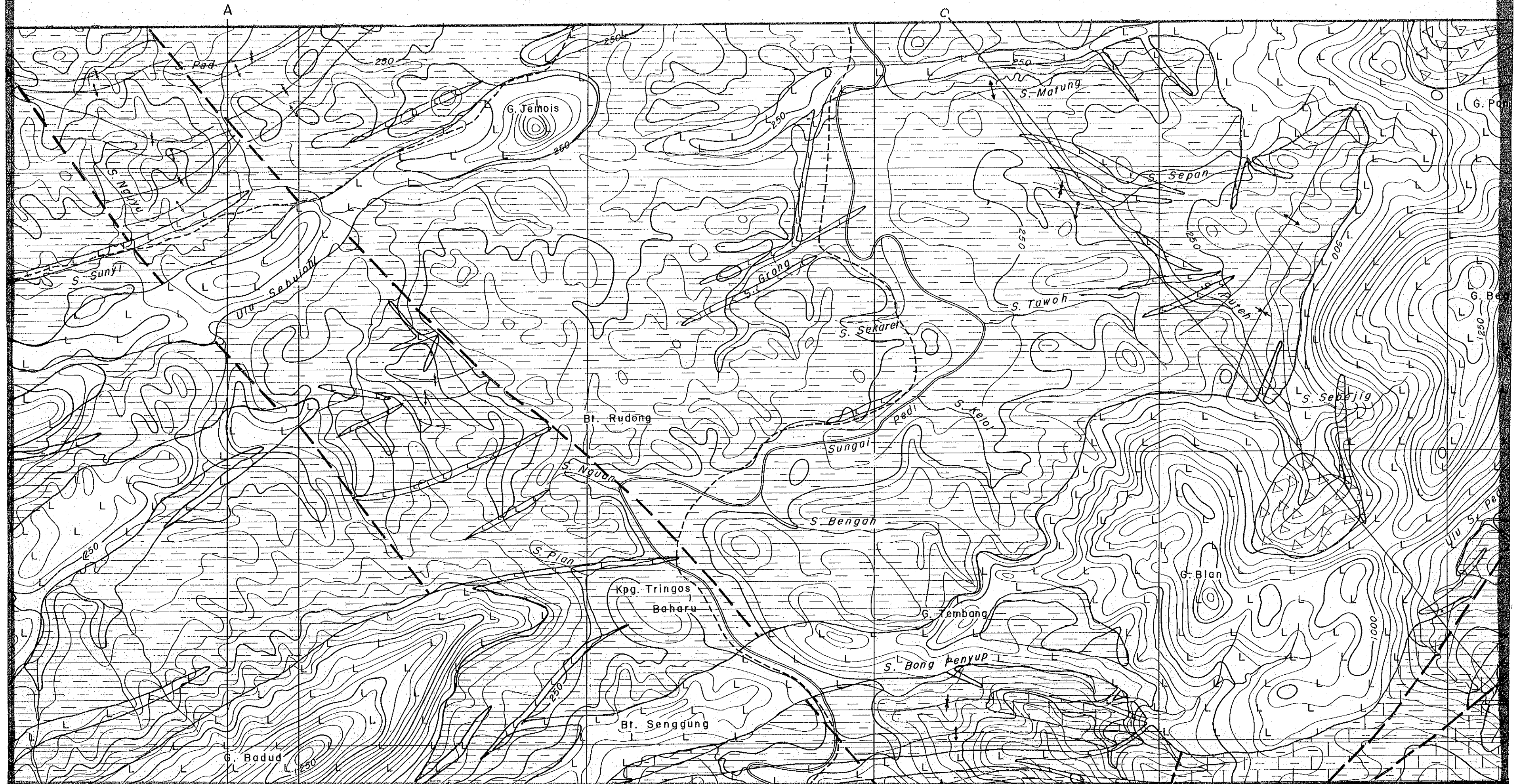
93

MAP I-38 GEOLOGICAL MAP OF GUNUNG API - SUN

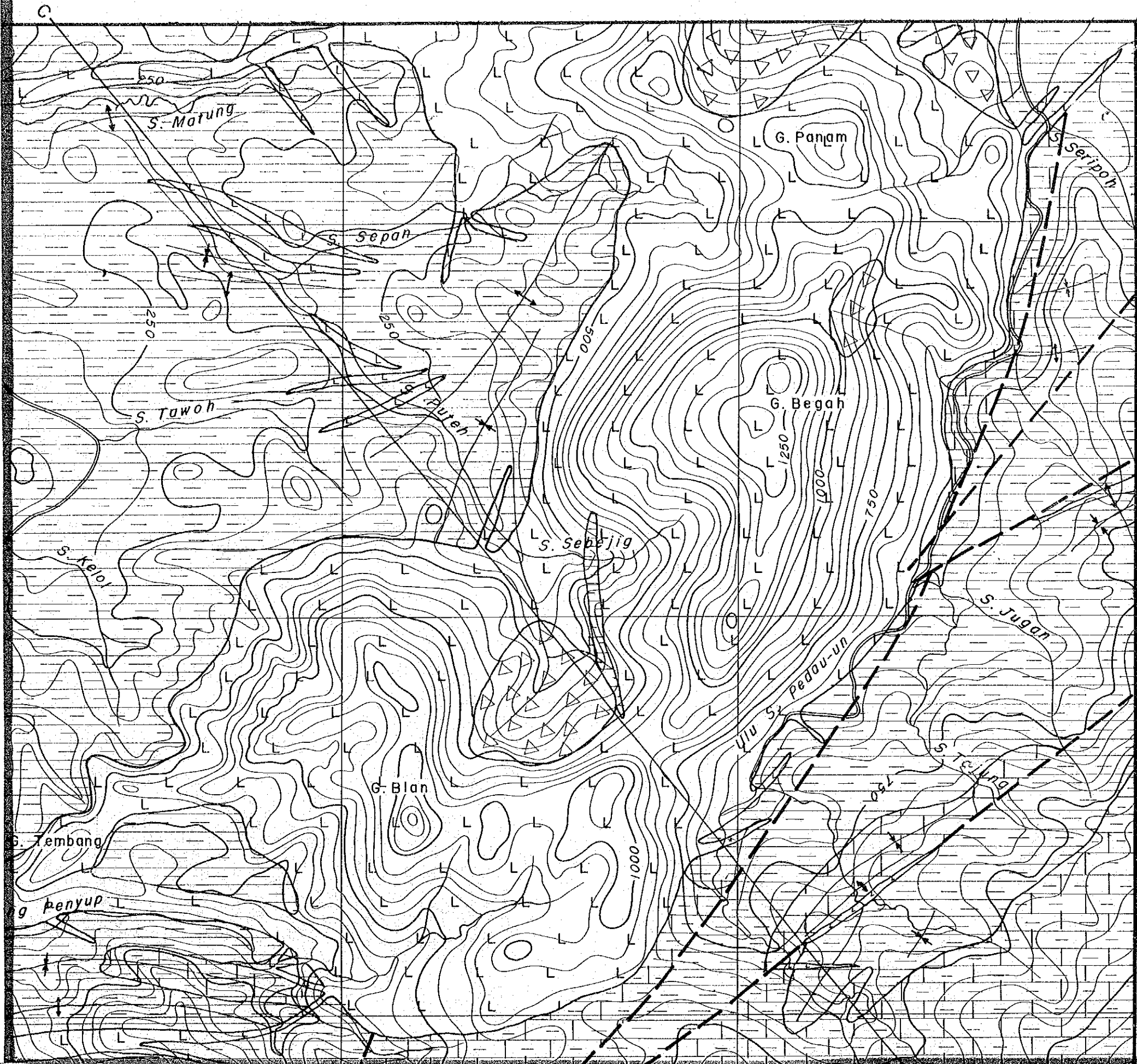


LEGEND

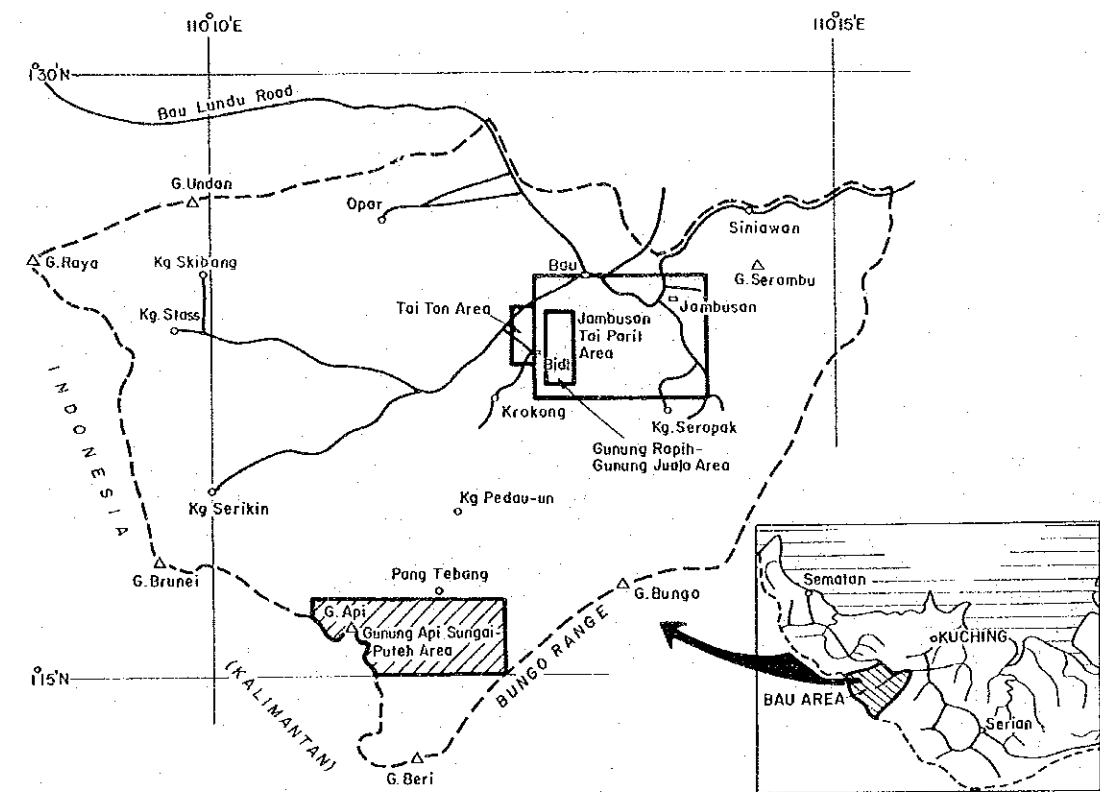
TOPOGRAPHICAL MAP OF GUNUNG API - SUNGAI PUTEH AREA



国際協力事業団
10495
図書資料室蔵書
Map 1-38



MINERAL EXPLORATION
BAU AREA
WEST SARAWAK, MALAYSIA
PHASE II
Geological Map of
Gunung Api-Sungai Puteh Area



JAPAN INTERNATIONAL COOPERATION AGENCY
METAL MINING AGENCY OF JAPAN
GEOLOGICAL SURVEY OF MALAYSIA

1039

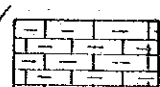
LEGEND

Younger
Volcanics

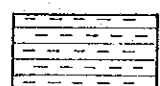


Tuff ~ tuffbreccia

Pedawan
Formation

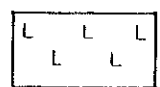


Alternation of Calcareous
mudstone / sandstone / argillaceous limestone



Alternation of mudstone / siltstone /
sandstone

Intrusive



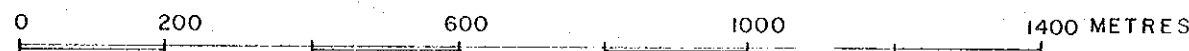
Granodiorite - dacite

--- Fault

↑

↓ Fold axis

SCALE



1038

39040

39050

39060

39070

B

39080

A

m

400

300

200

100

0

SECTION A - B

B

C

m

600

500

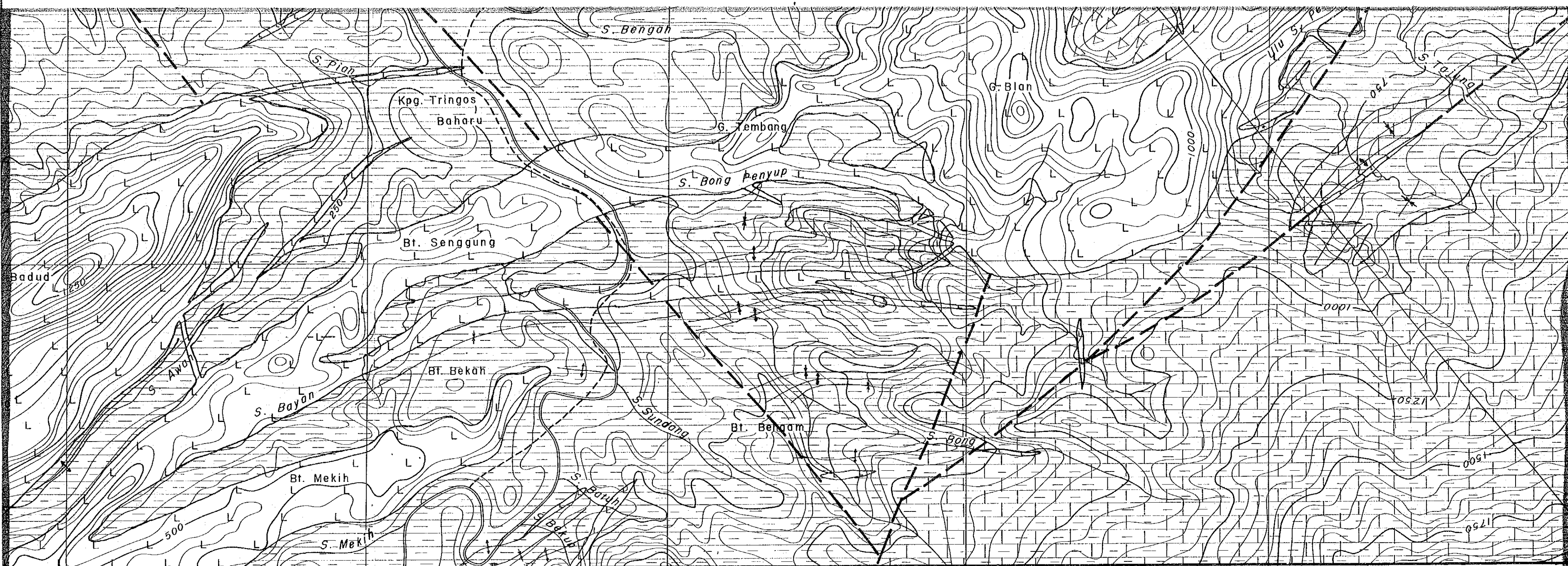
400

300

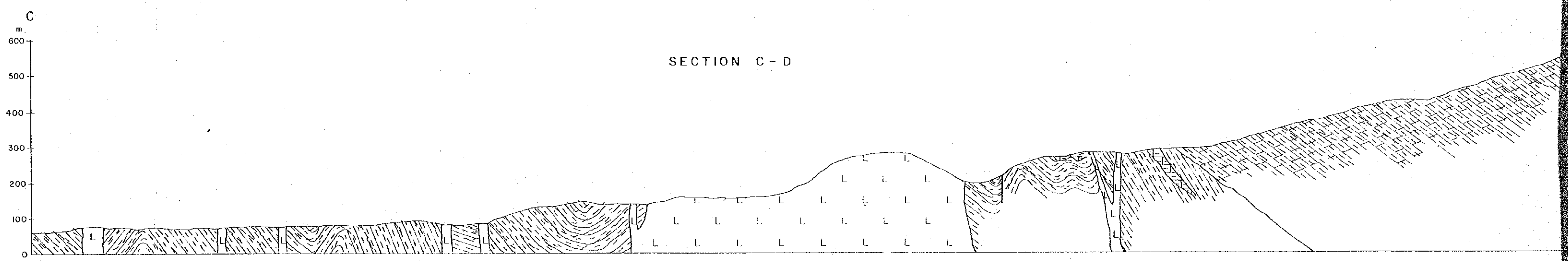
200

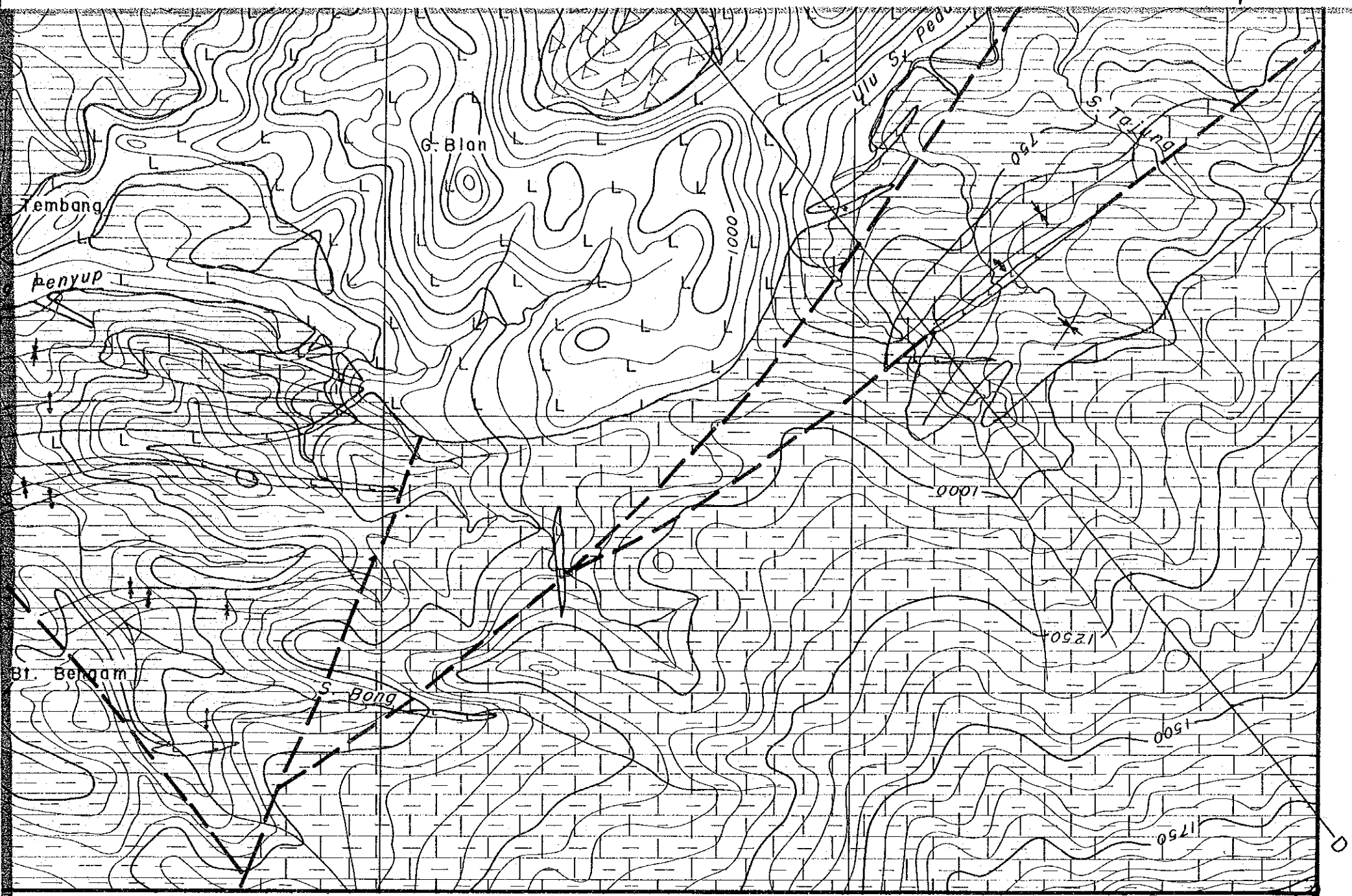
100

0



39080 39090 39100 39110 39120 39130



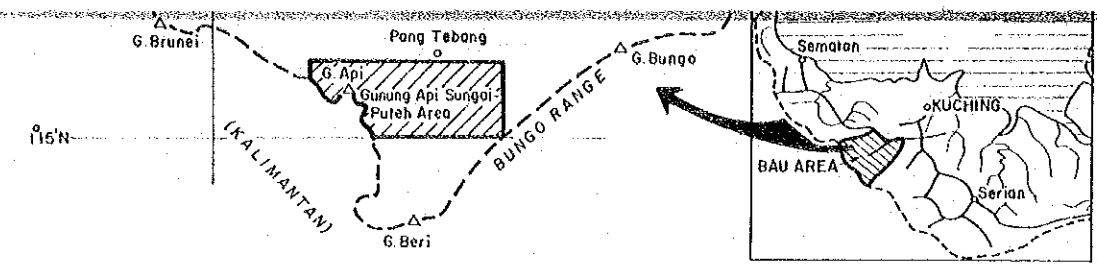
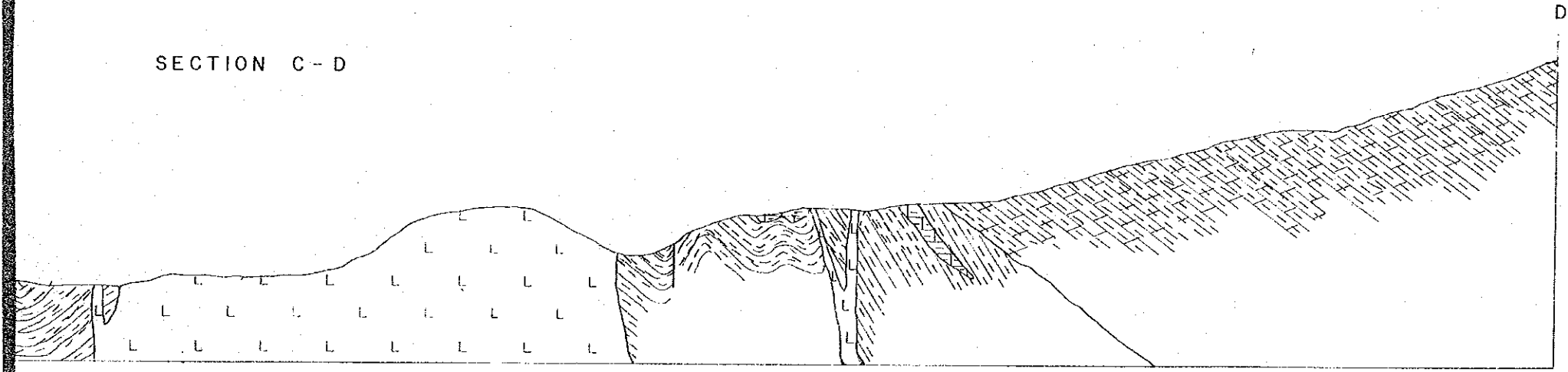


39110

39120

39130

SECTION C-D



JAPAN INTERNATIONAL COOPERATION AGENCY
 METAL MINING AGENCY OF JAPAN
 GEOLOGICAL SURVEY OF MALAYSIA

Map I-39 Location Maps of Samples, Gunung Api - Sungai Puteh Area

国際協力事業団

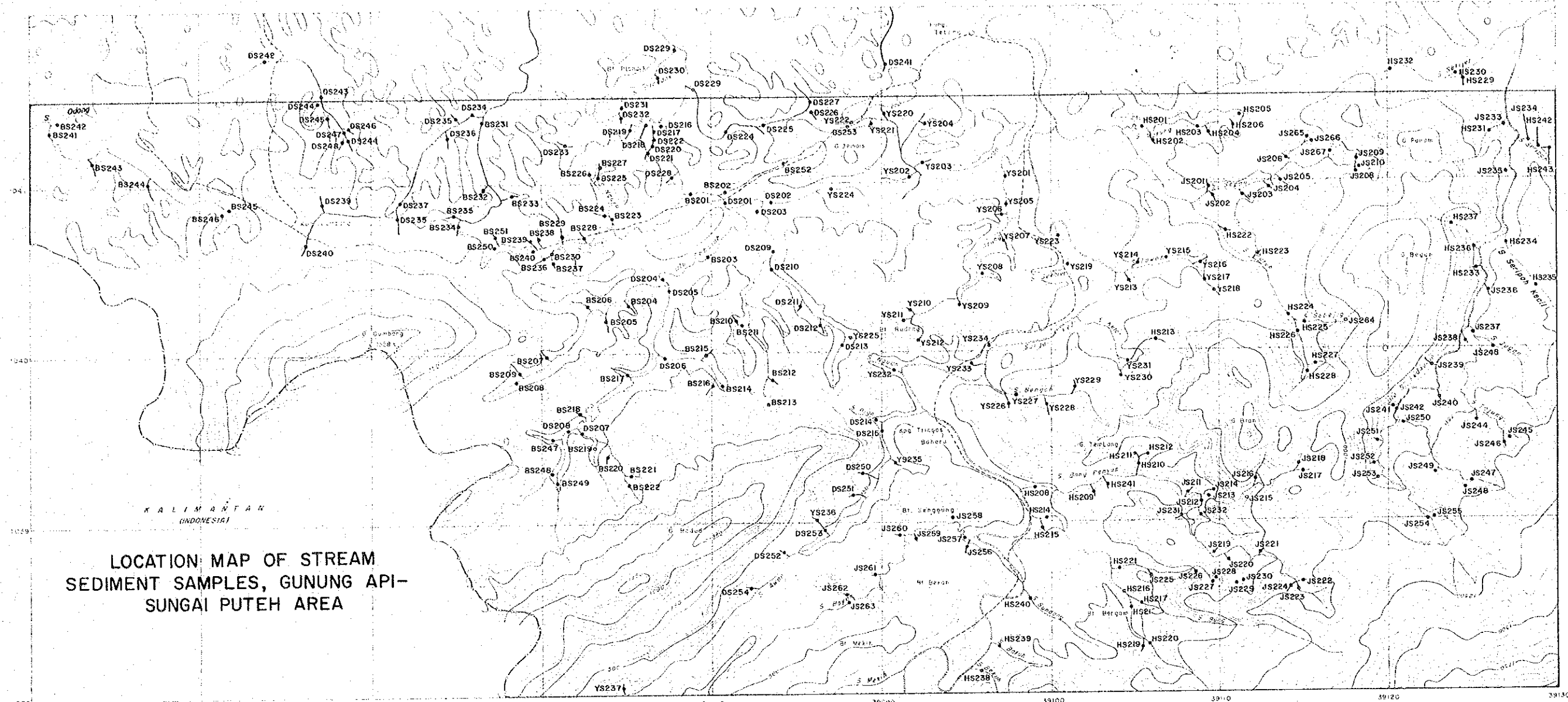
10445

図書資料室蔵書

Map I-39

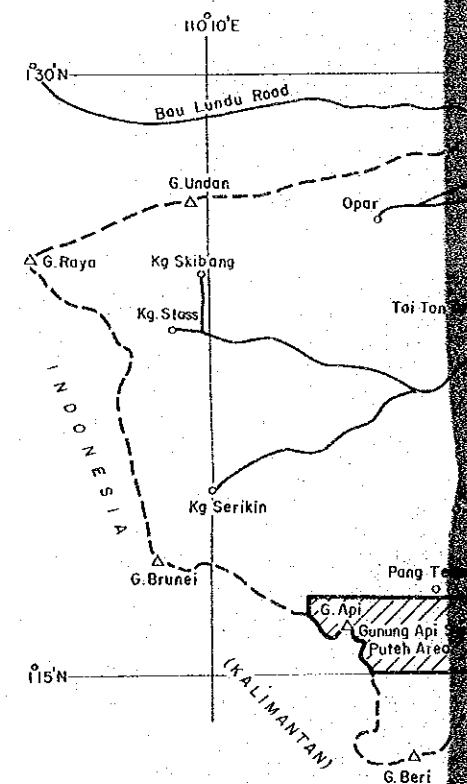
MINERAL
BASE
WEST SAR
PH

Location Map
Gunung Api-

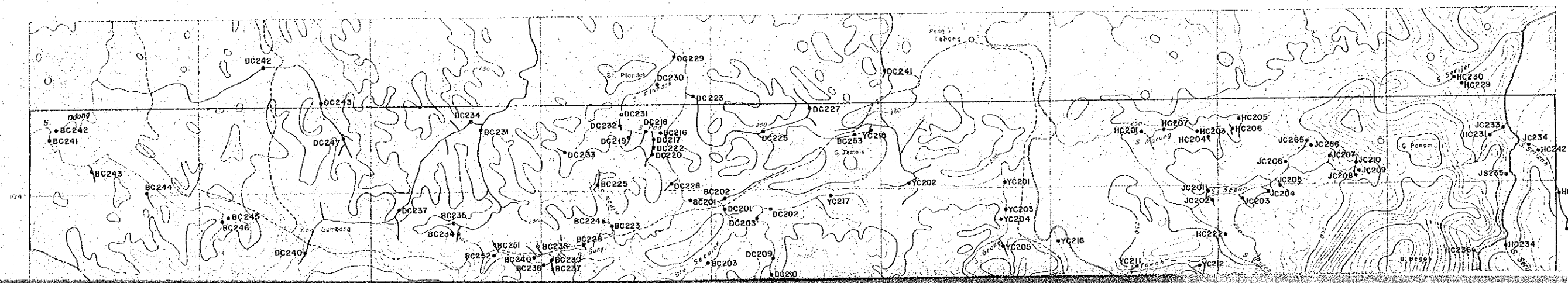


LOCATION MAP OF STREAM
SEDIMENT SAMPLES, GUNUNG API-
SUNGAI PUTEH AREA

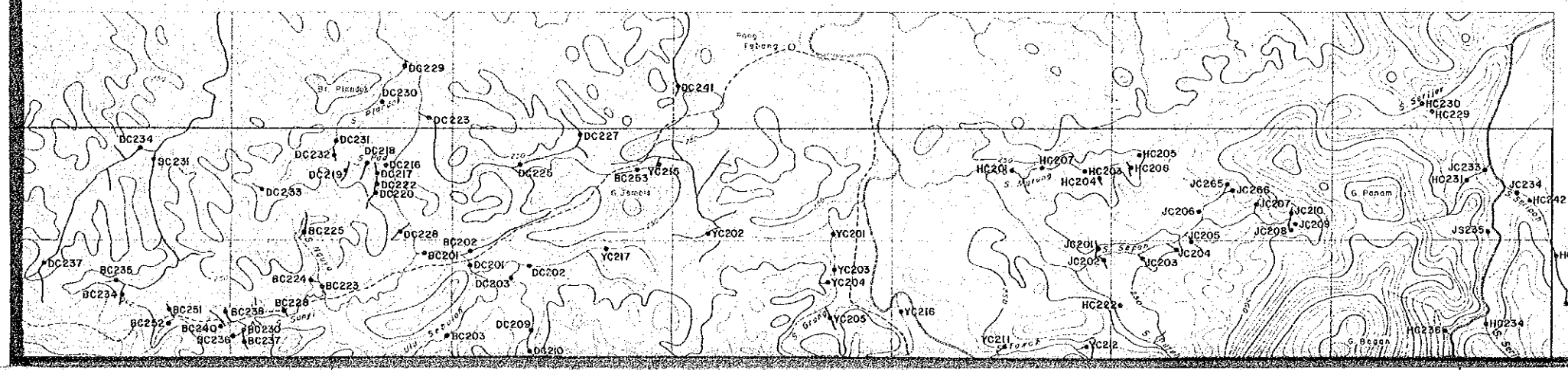
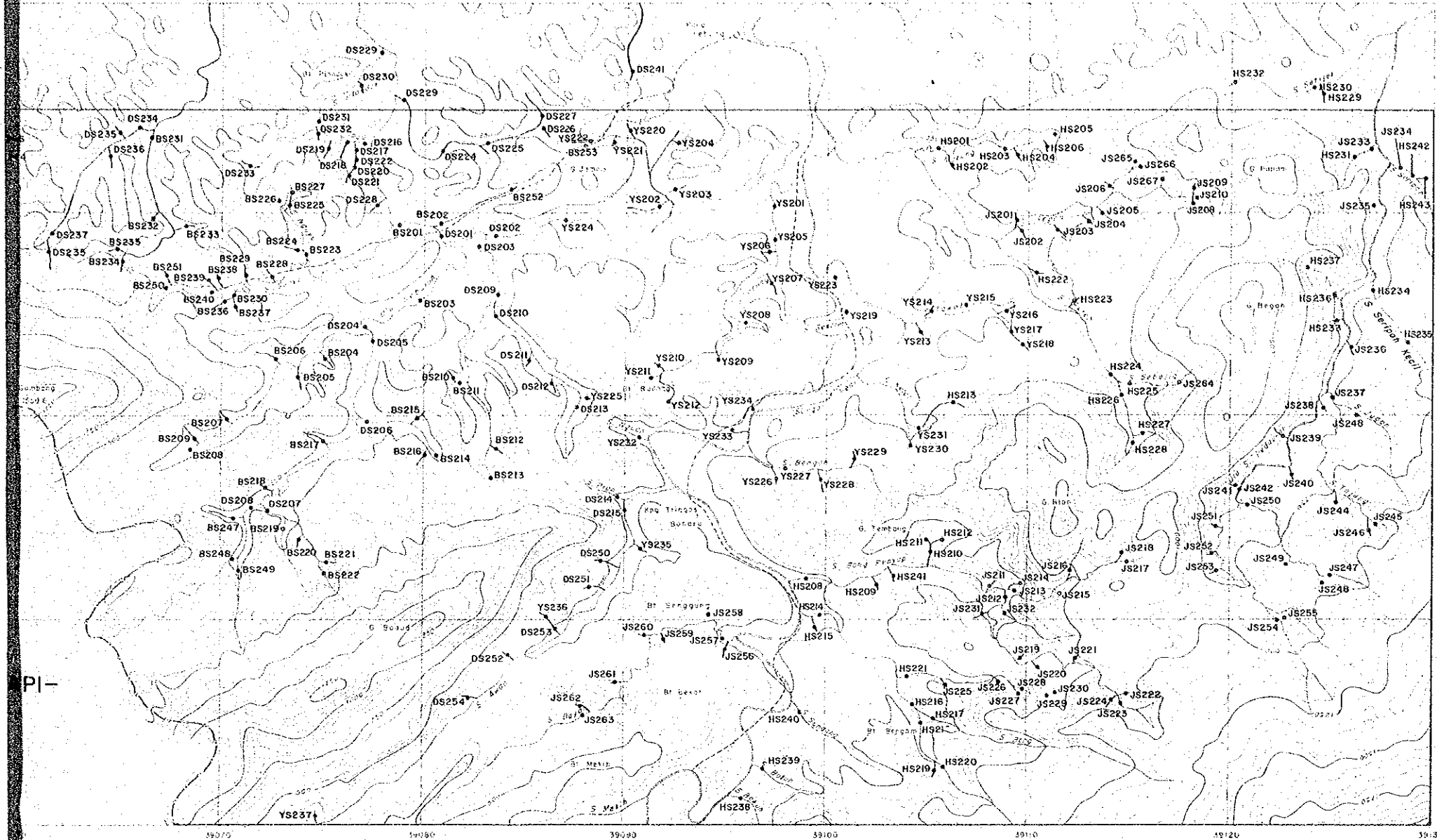
SM 1333/12/83



JAPAN INTERNATIONAL
METAL MINING
GEOLOGICAL SURVEY



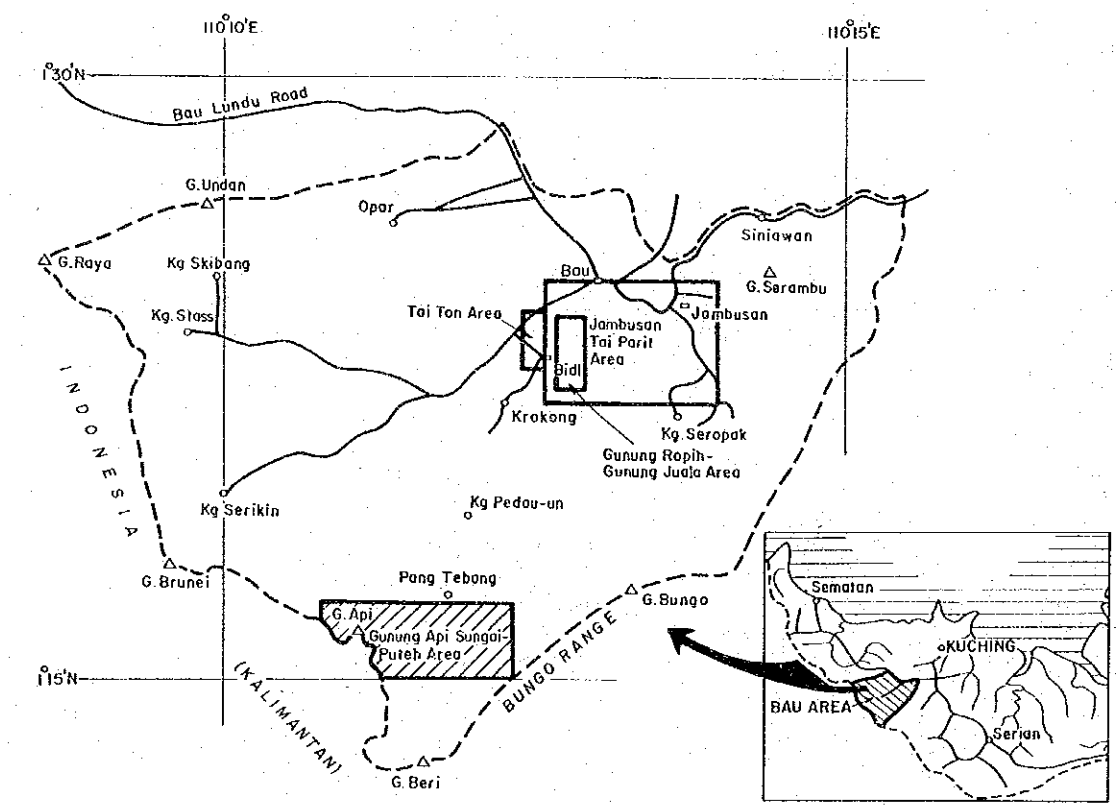
I-39 Location Maps of Samples, Gunung Api - Sungai Puteh Area



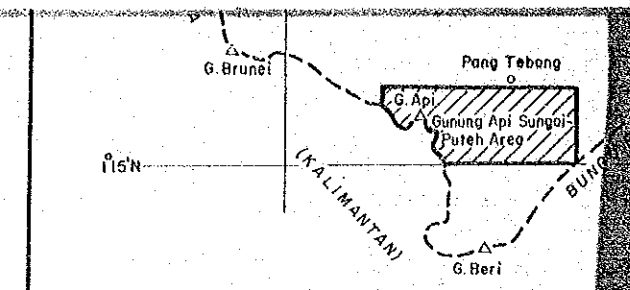
国際協力事業団
10445
図書資料室蔵書
Map I-39

MINERAL EXPLORATION
BAU AREA
WEST SARAWAK, MALAYSIA
PHASE II

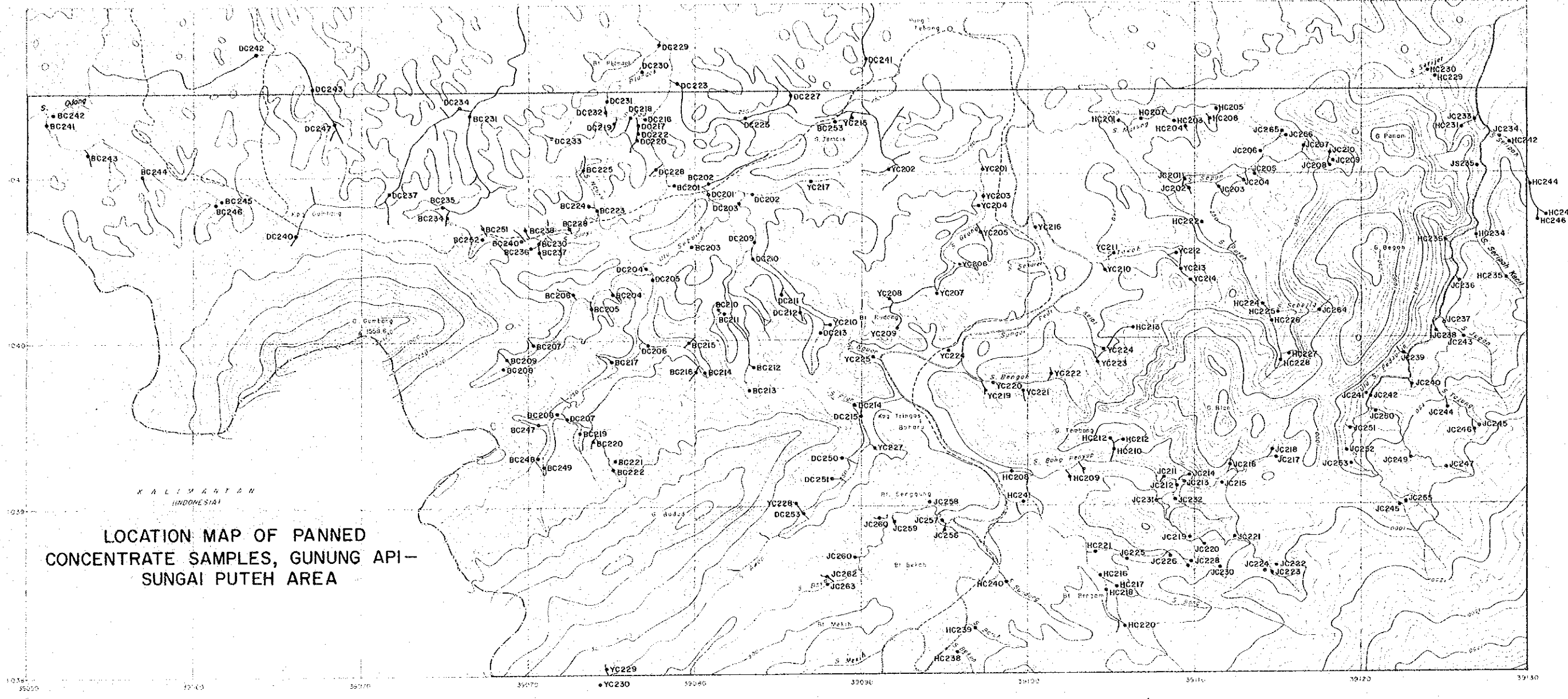
Location Map of Samples
Gunung Api-Sungai Puteh Area



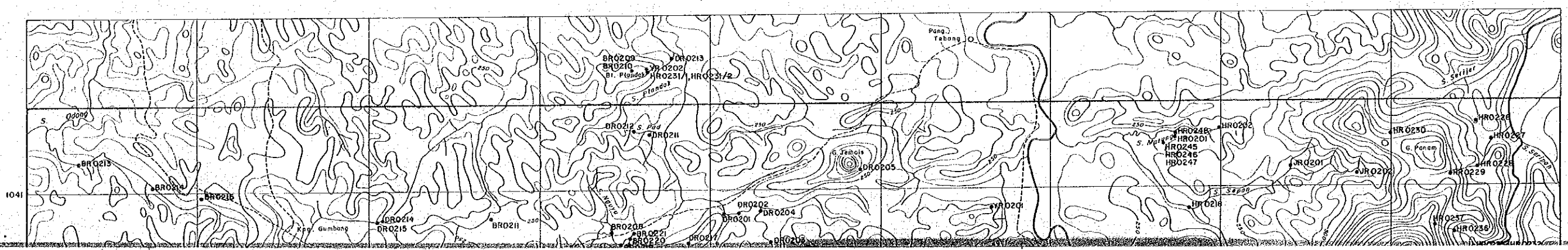
JAPAN INTERNATIONAL COOPERATION AGENCY
METAL MINING AGENCY OF JAPAN
GEOLOGICAL SURVEY OF MALAYSIA

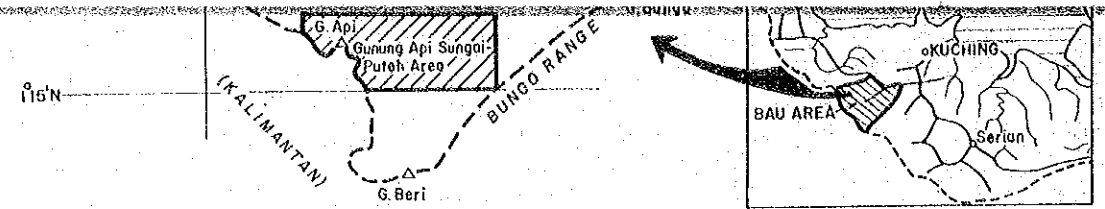


JAPAN INTERNATIONAL
METAL MINING AND
GEOLOGICAL SURVEY

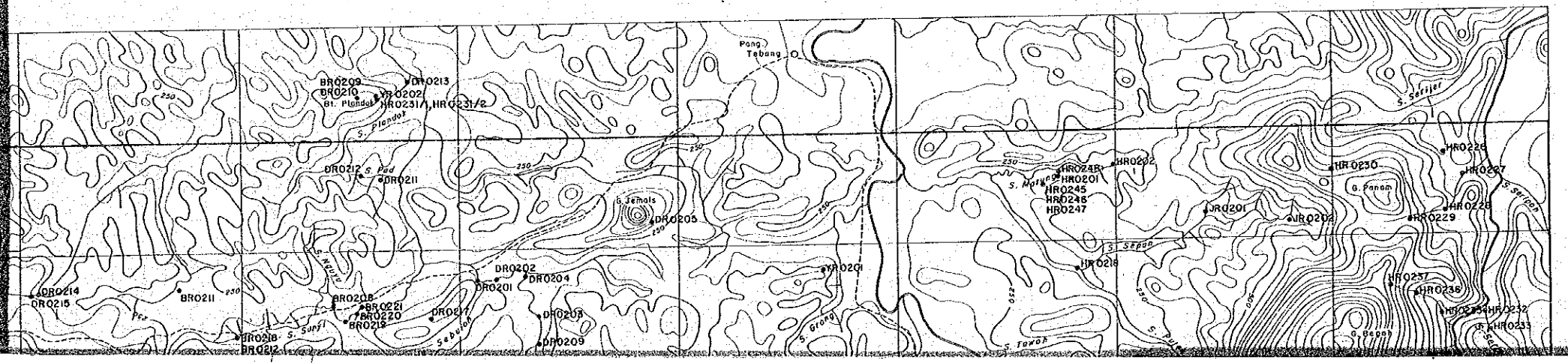
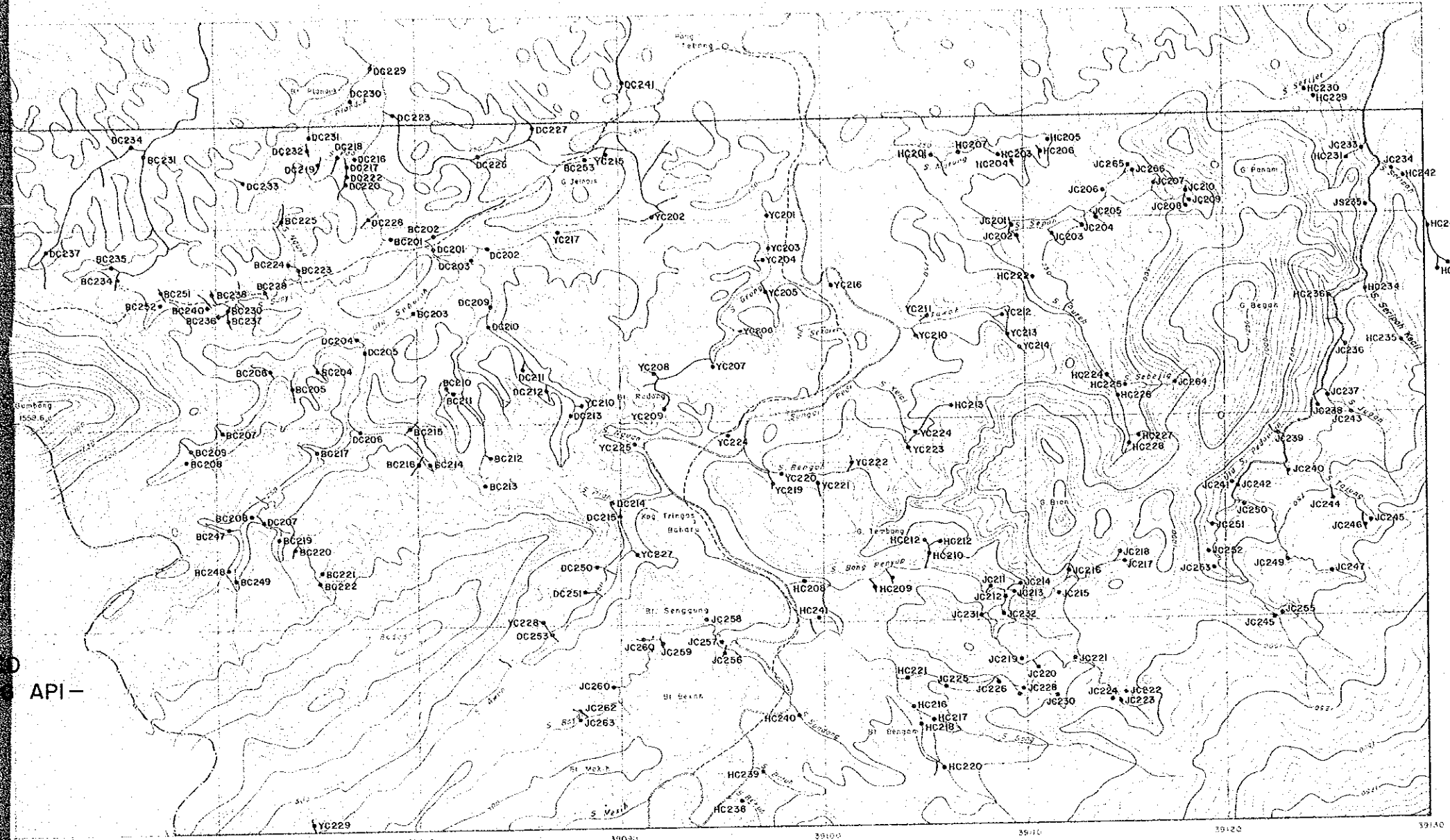


LOCATION MAP OF PANNED
CONCENTRATE SAMPLES, GUNUNG API-
SUNGAI PUTEH AREA



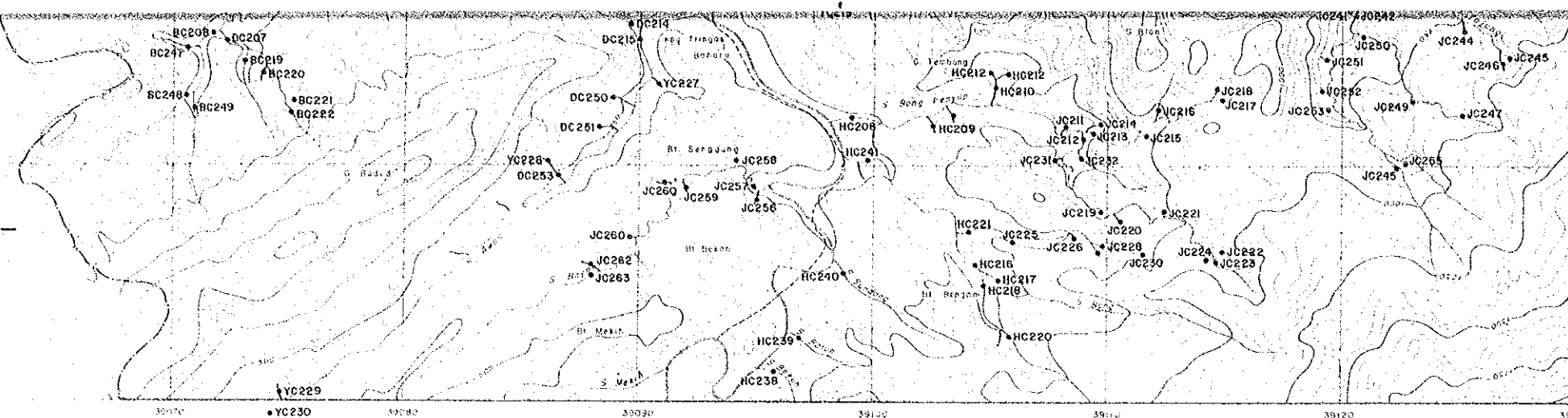


JAPAN INTERNATIONAL COOPERATION AGENCY
METAL MINING AGENCY OF JAPAN
GEOLOGICAL SURVEY OF MALAYSIA



KALIMANTAN
INDONESIA

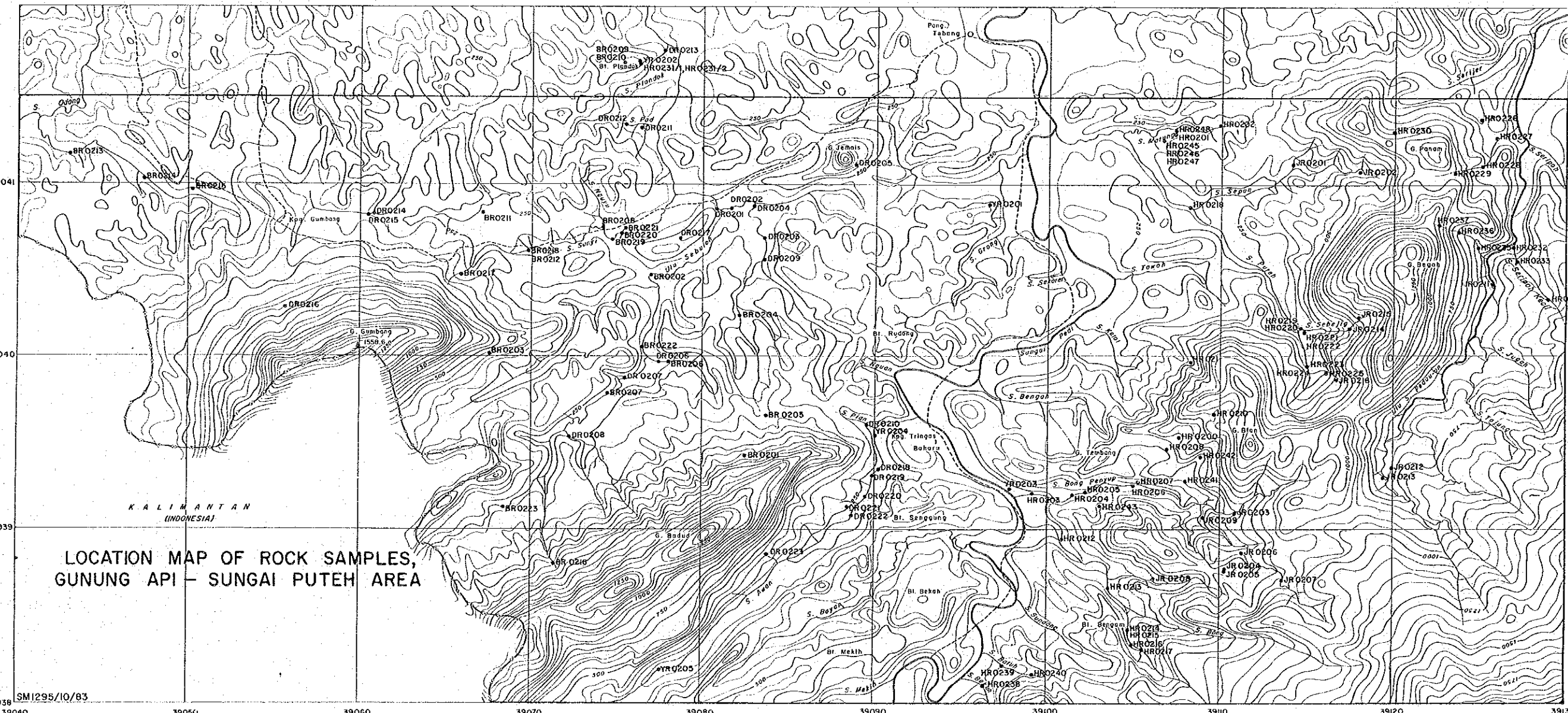
LOCATION MAP OF PANNED
CONCENTRATE SAMPLES, GUNUNG API-
SUNGAI PUTEH AREA



SM 1335/1/84

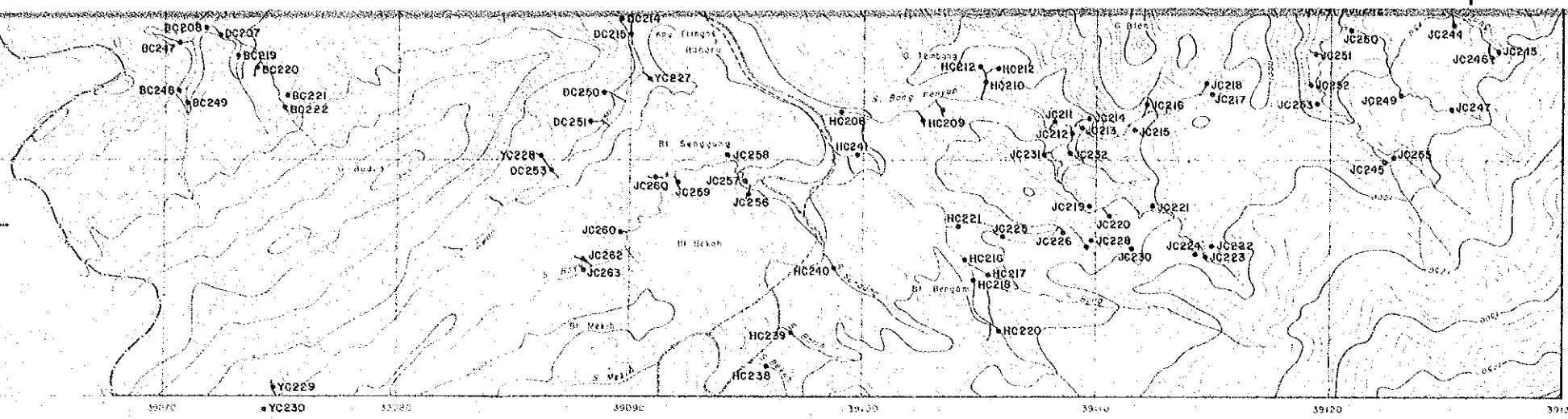
KALIMANTAN
INDONESIA

LOCATION MAP OF ROCK SAMPLES,
GUNUNG API - SUNGAI PUTEH AREA



SM 1295/10/83

API--



LES,
AREA

