

MAP I-20 Sb ANOMALY SURFACE MAP

国際協力事業団  
10445  
図書資料室蔵書  
Map I-20



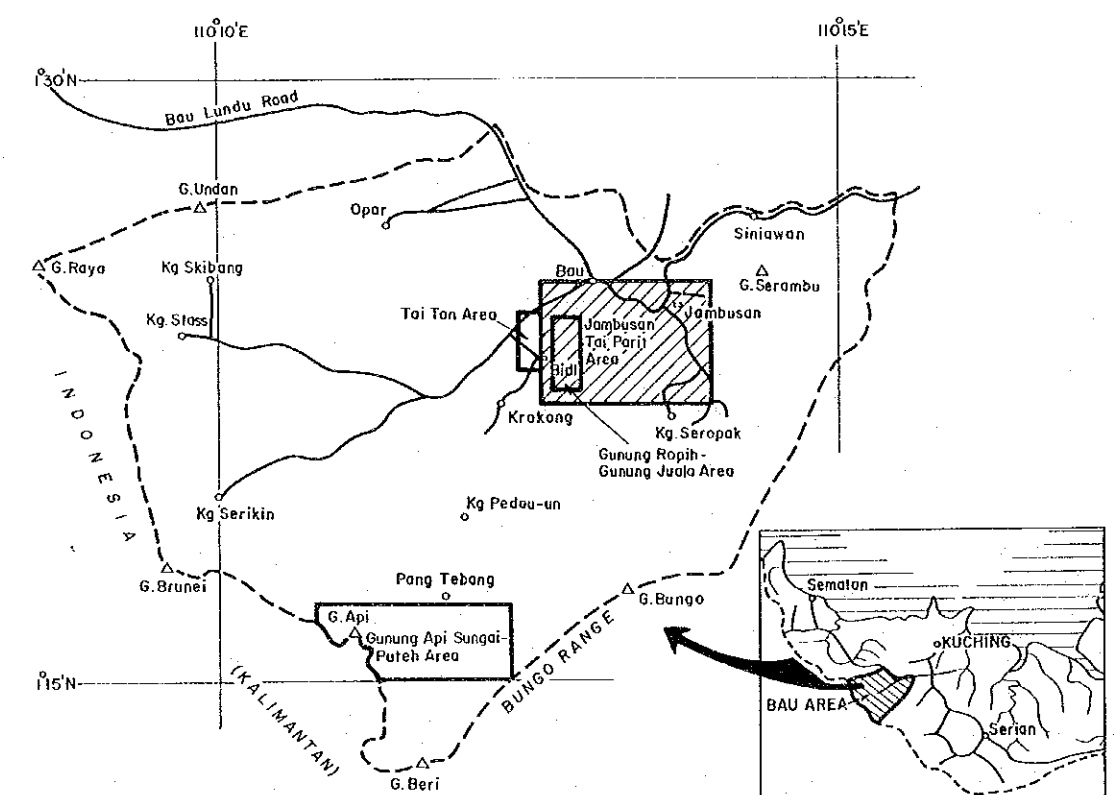
130°N  
G. Raya  
INDONESIA  
115°N  
JAPA



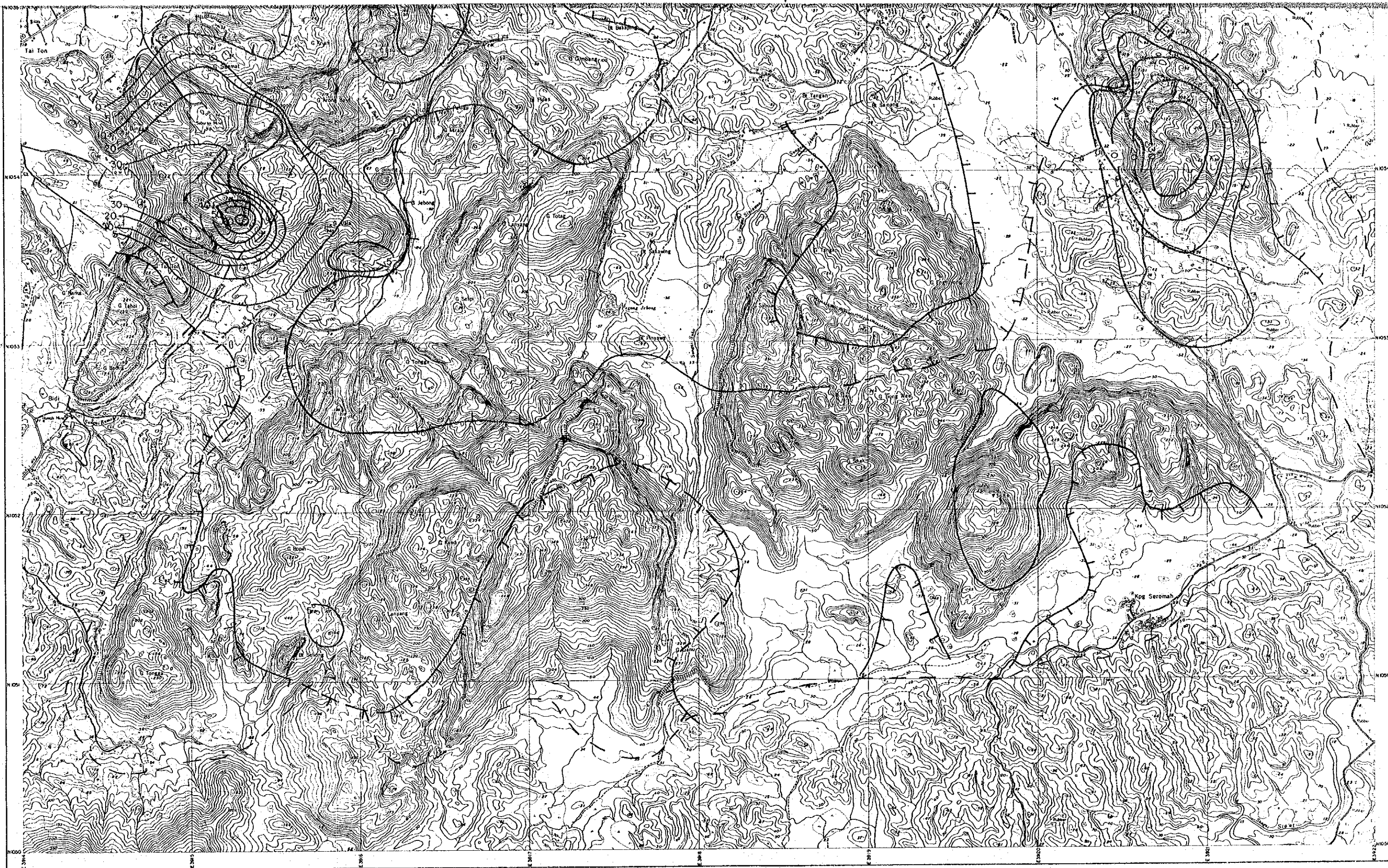
国際協力事業団  
10445  
図書資料室蔵書  
Map 1-20

MINERAL EXPLORATION  
BAU AREA  
WEST SARAWAK, MALAYSIA  
PHASE II

Sb Anomaly Surface Map,  
Jambusan-Tai Parit Area

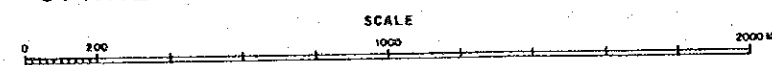


JAPAN INTERNATIONAL COOPERATION AGENCY  
METAL MINING AGENCY OF JAPAN  
GEOLOGICAL SURVEY OF MALAYSIA



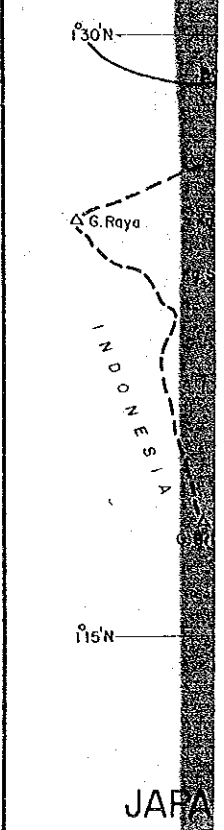
SM 1351/1/84

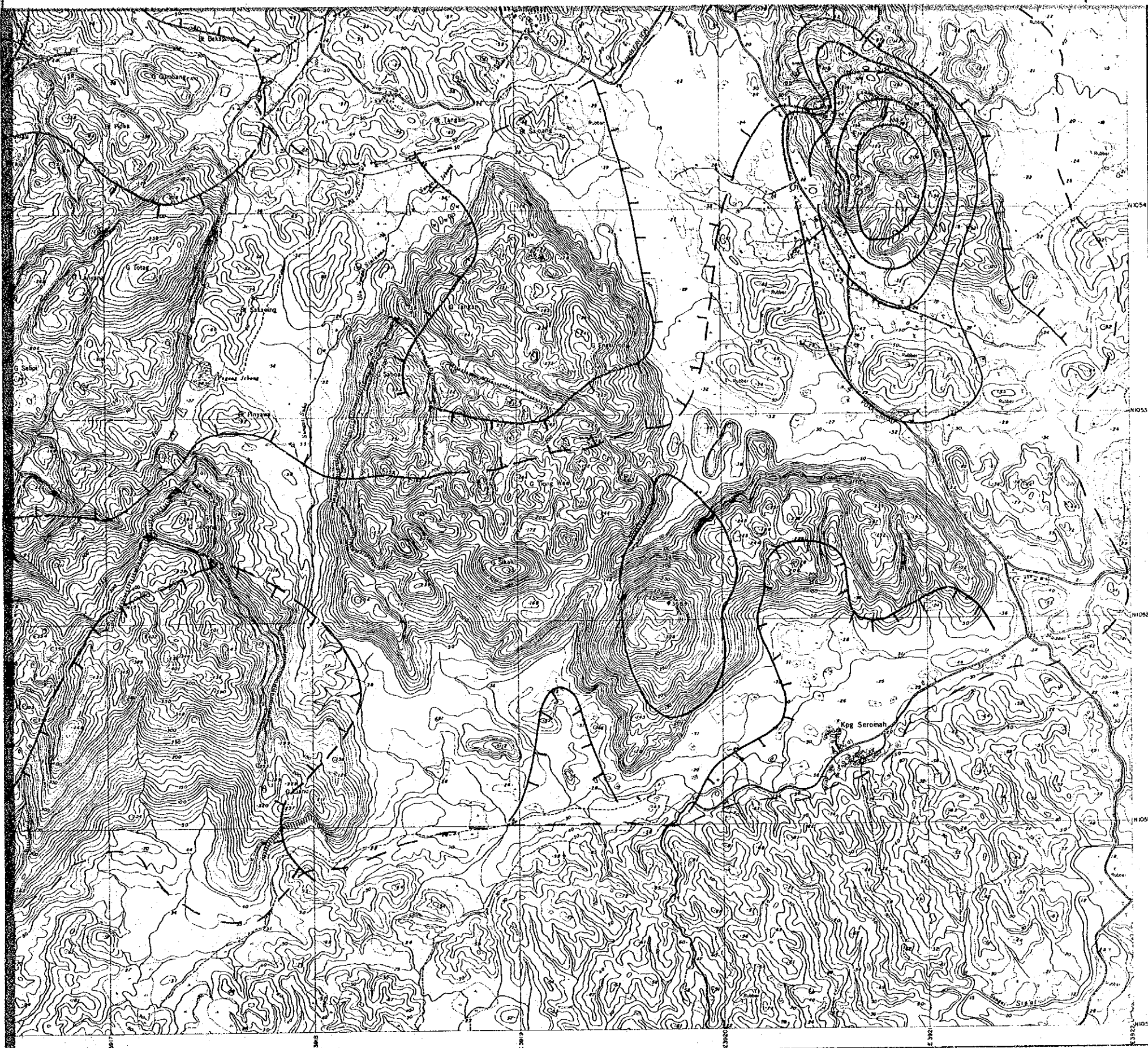
### JAMBUSAN-TAI PARIT AREA



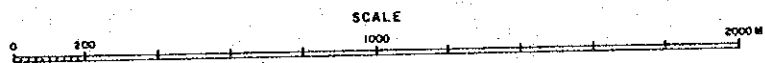
Contour interval: 5pp

--- Approximate outer limit of sampling coverage





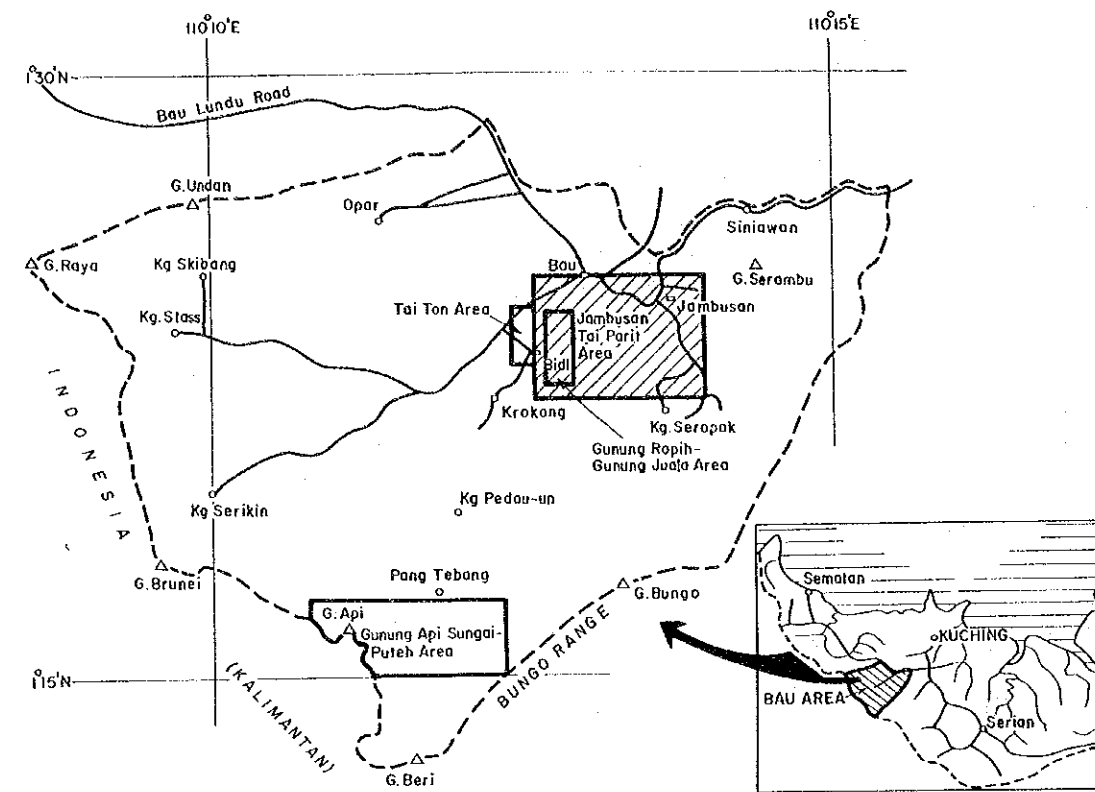
JAMBUSAN-TAI PARIT AREA



Contour interval: 5pp

--- Approximate outer limit of sampling coverage

Sb Anomaly Surface Map,  
Jambusan-Tai Parit Area



JAPAN INTERNATIONAL COOPERATION AGENCY  
METAL MINING AGENCY OF JAPAN  
GEOLOGICAL SURVEY OF MALAYSIA