

MAP I-19 As ANOMALY SURFACE MAP



国際協力事業団
10445
図書資料室蔵書
Map I-19

130N

G. Raya

INDONESIA

115N

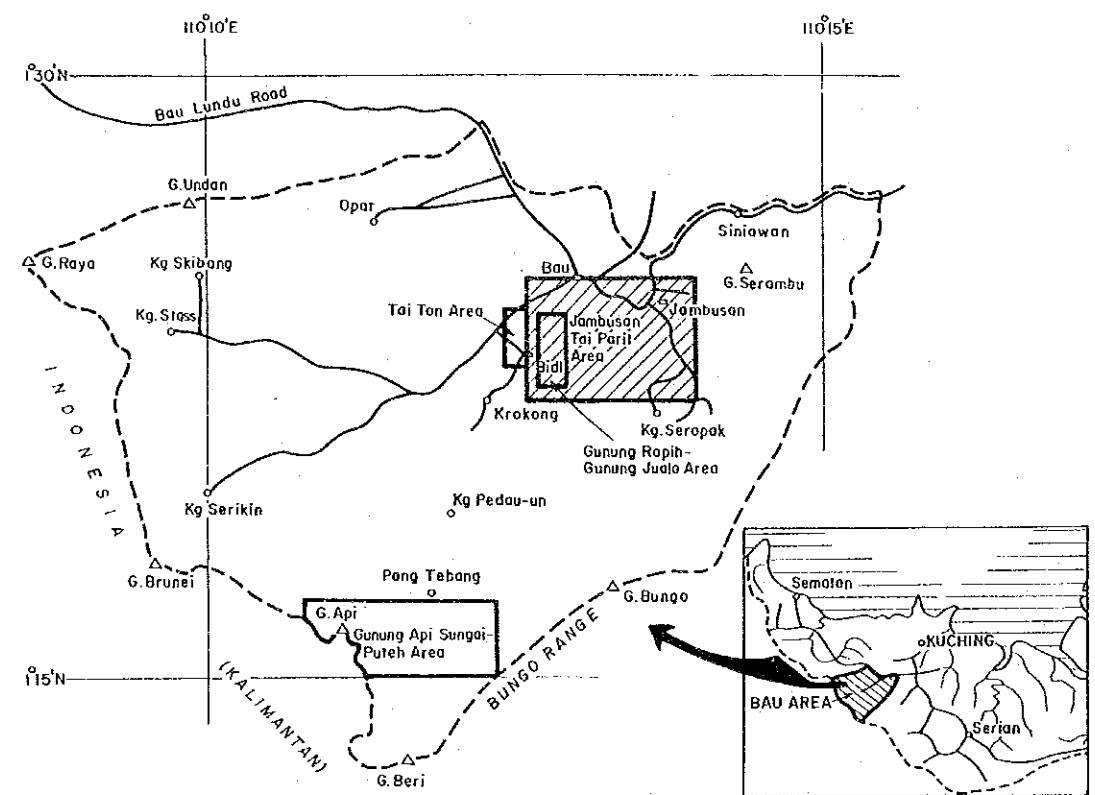
JAPANESE

I-19 As ANOMALY SURFACE MAP

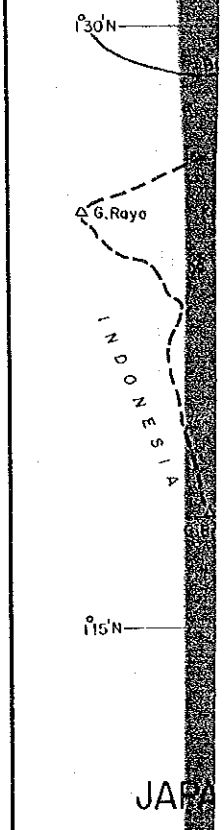
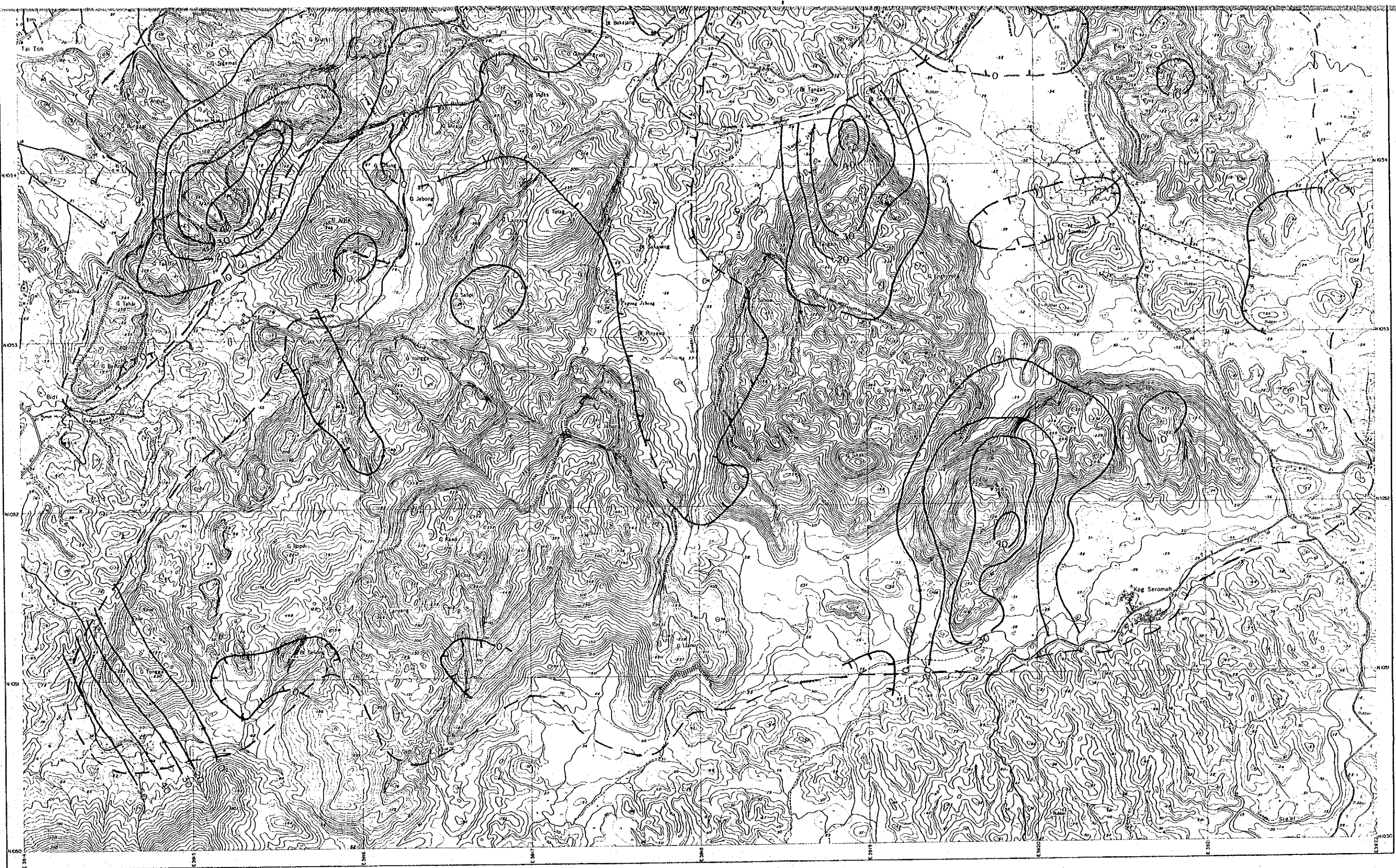


国際協力事業団
10445
図書資料室蔵書
Map I-19

MINERAL EXPLORATION
BAU AREA
WEST SARAWAK, MALAYSIA
PHASE II
As Anomaly Surface Map,
Jambusan-Tai Parit Area

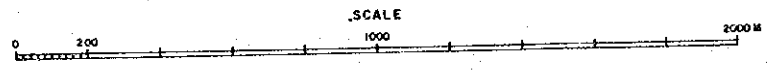


JAPAN INTERNATIONAL COOPERATION AGENCY
METAL MINING AGENCY OF JAPAN
GEOLOGICAL SURVEY OF MALAYSIA



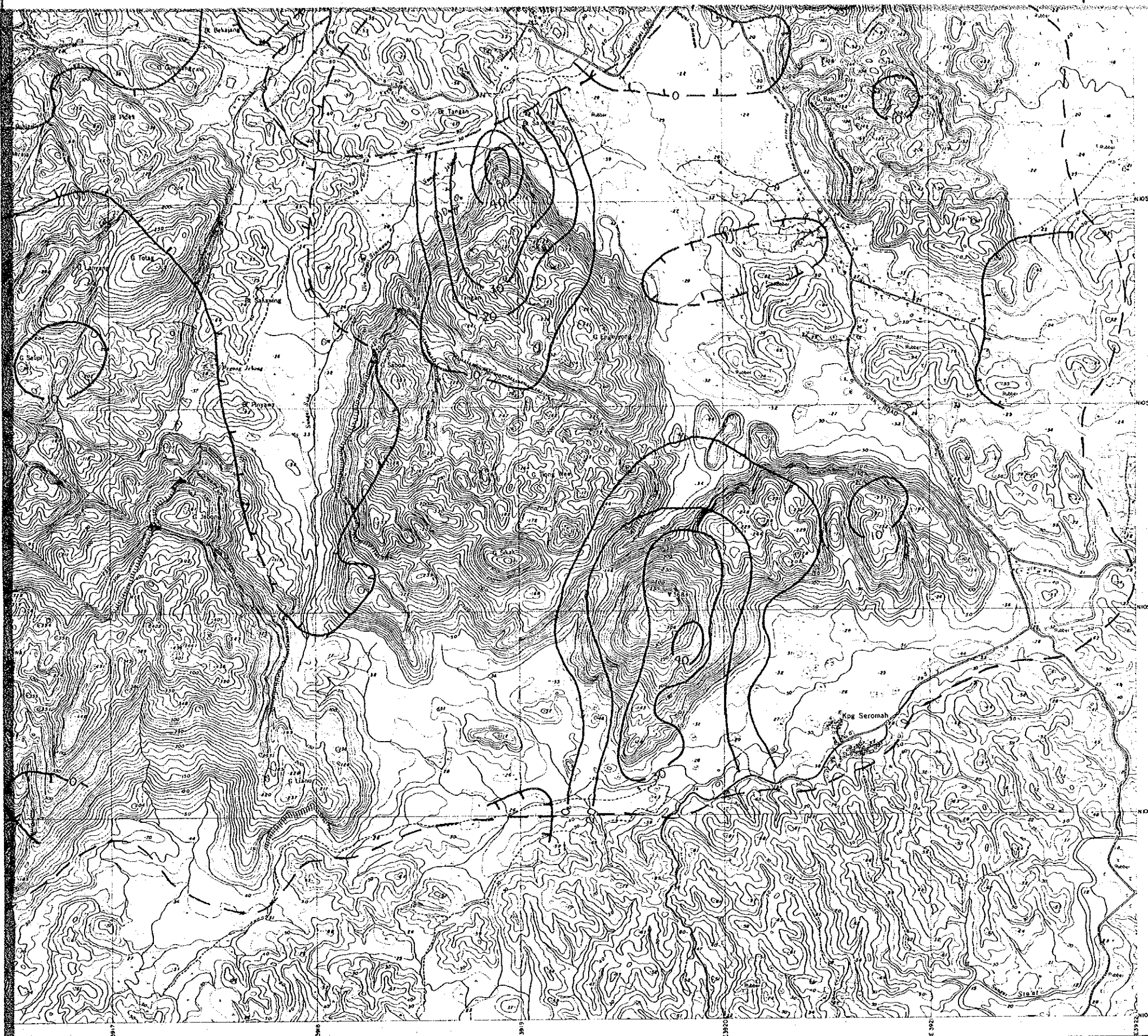
SM 1348/1/84

JAMBUSAN-TAI PARIT AREA

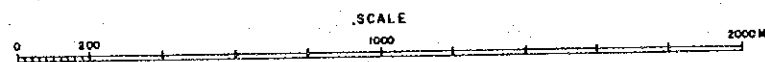


Contour interval : 10 ppm

--- Approximate outer limit of sampling coverage



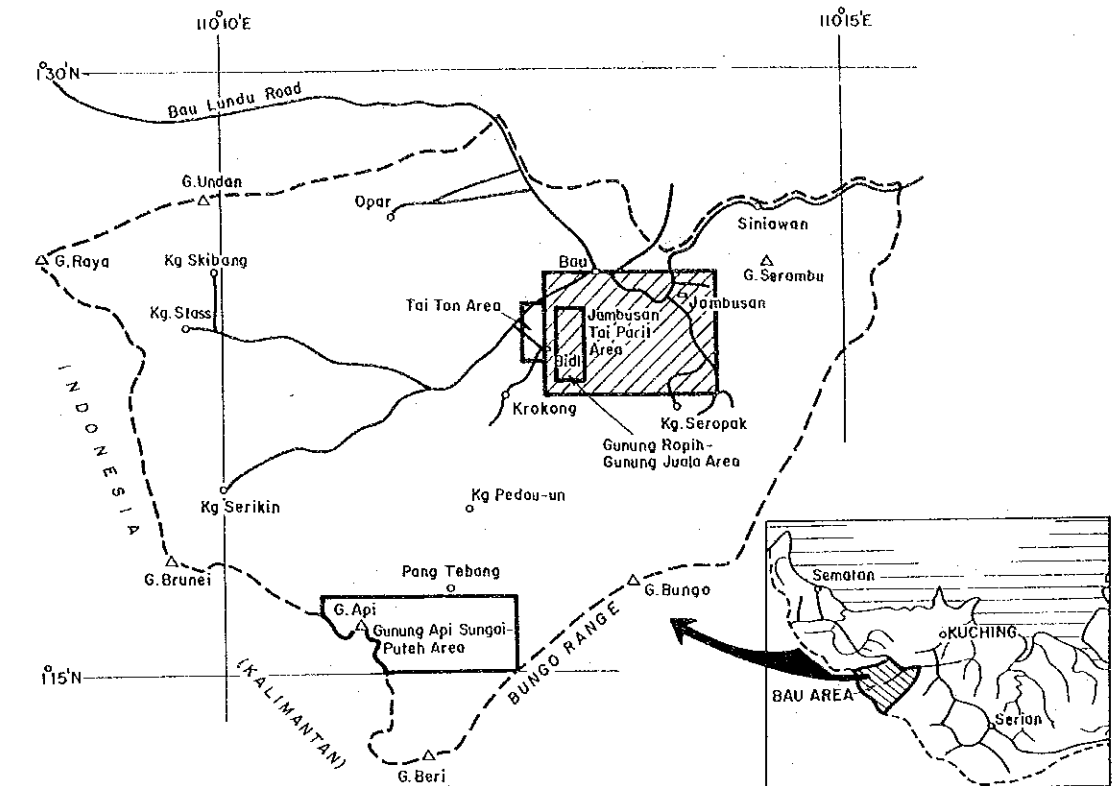
JAMBUSAN-TAI PARIT AREA



Contour interval : 10 ppm

--- Approximate outer limit of sampling coverage

As Anomaly Surface Map, Jambusan-Tai Parit Area



JAPAN INTERNATIONAL COOPERATION AGENCY
METAL MINING AGENCY OF JAPAN
GEOLOGICAL SURVEY OF MALAYSIA