

MAP I-16 Pb ANOMALY SURFACE MAP

国際協力事業団  
10445  
図書資料室蔵書  
Map I-16



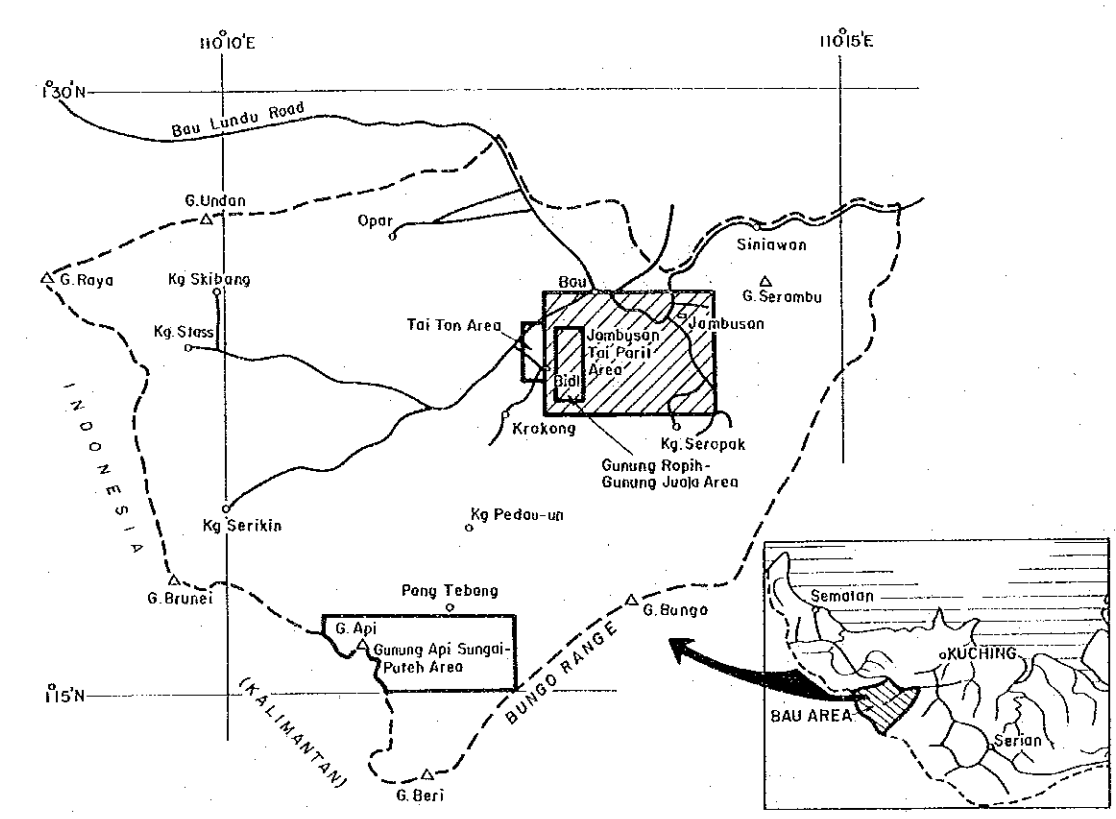
130°N  
G. Raya  
INDONESIA  
115°N  
JAP

I-16 Pb ANOMALY SURFACE MAP

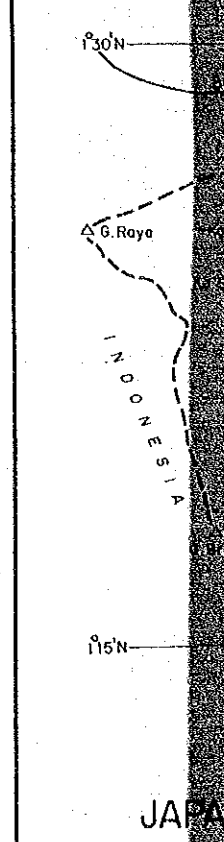
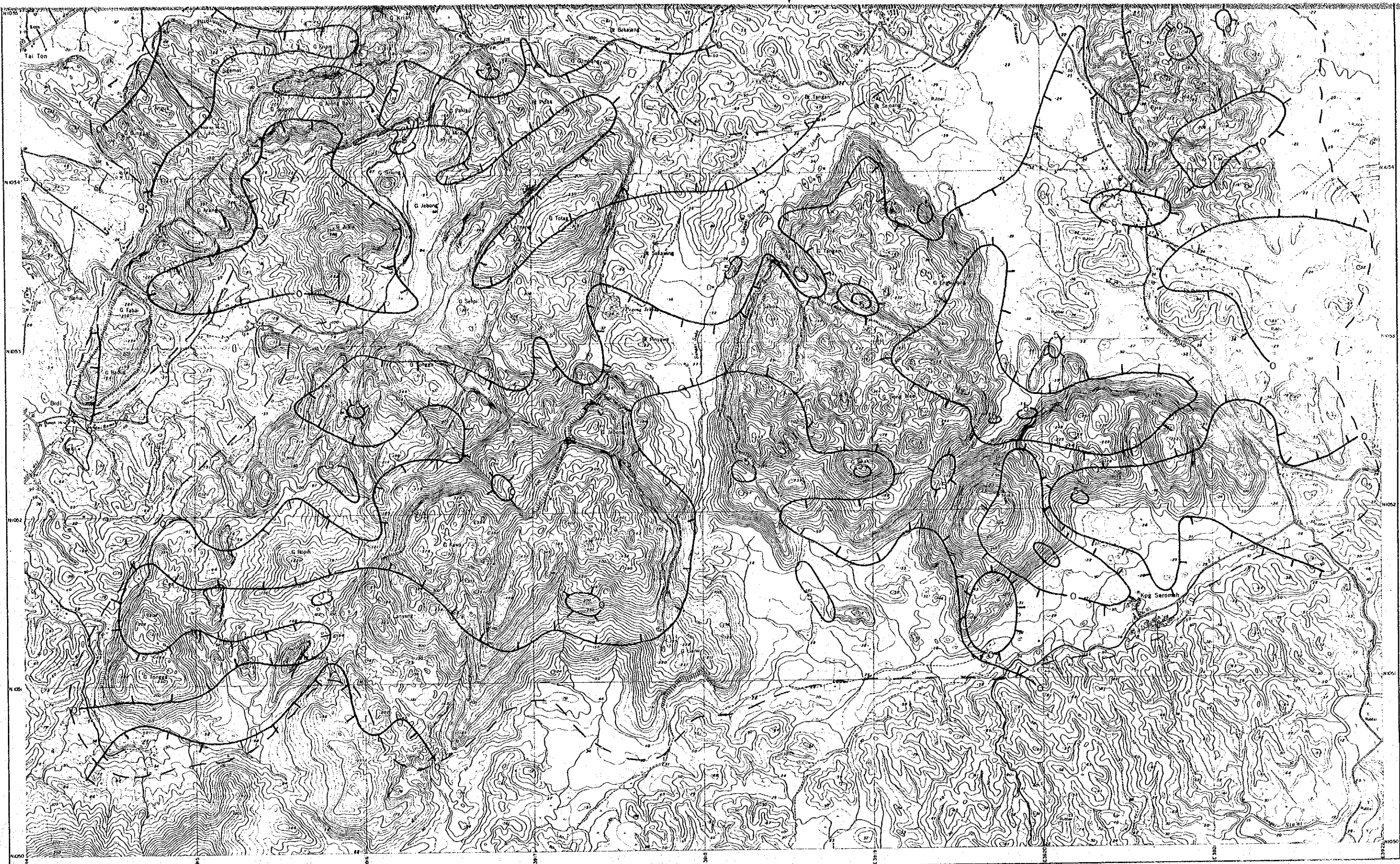


国際協力事業団  
10445  
図書資料室蔵書  
Map 1-16

MINERAL EXPLORATION  
BAU AREA  
WEST SARAWAK, MALAYSIA  
PHASE II  
Pb Anomaly Surface Map,  
Jambusan - Tai Parit Area

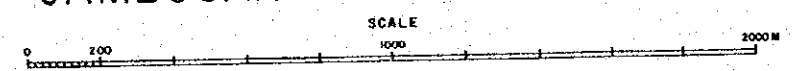


JAPAN INTERNATIONAL COOPERATION AGENCY  
METAL MINING AGENCY OF JAPAN  
GEOLOGICAL SURVEY OF MALAYSIA



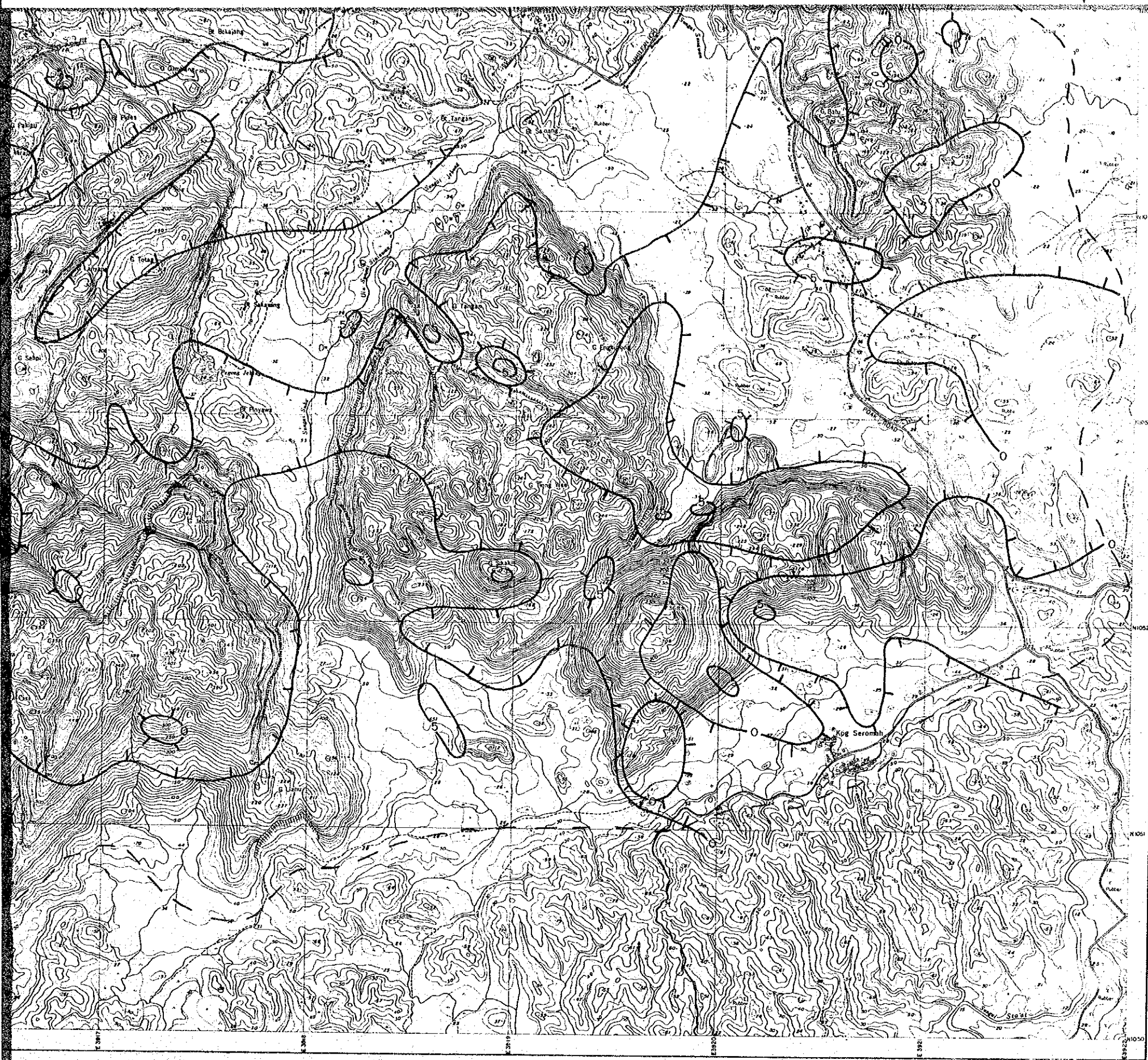
SM 1354/1/83

### JAMBUSAN-TAI PARIT AREA

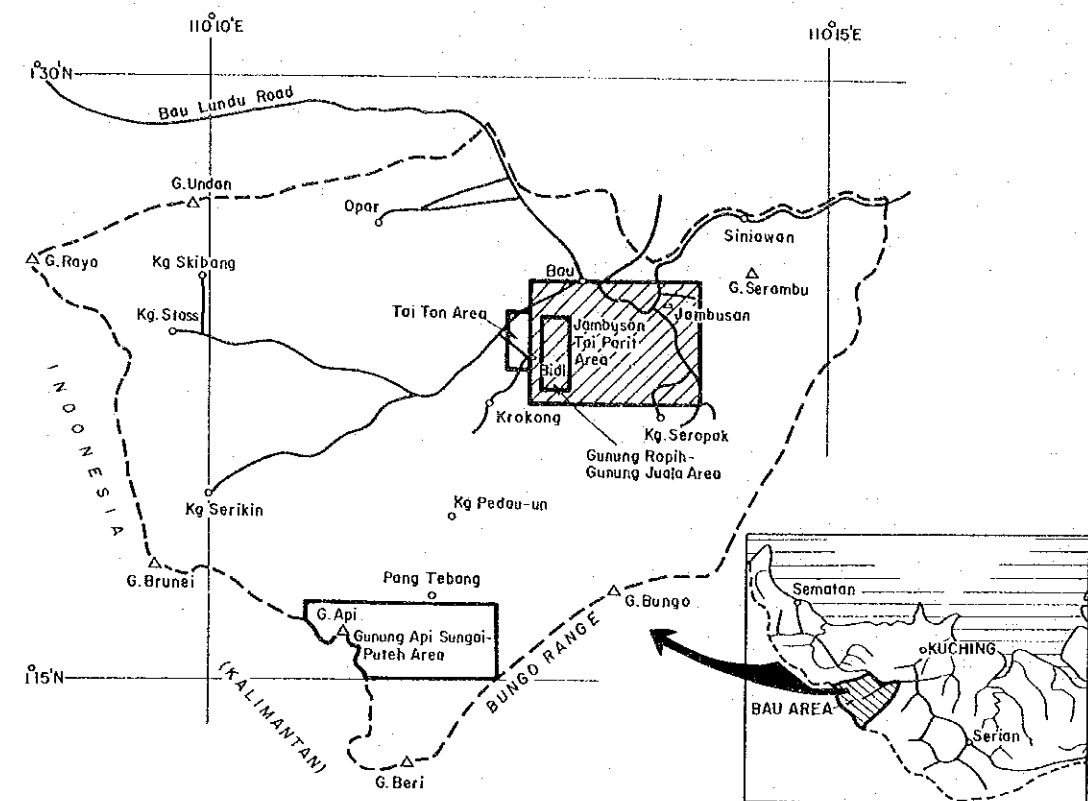


Contour interval: 5pm

— — — Approximate outer limit of sampling coverage

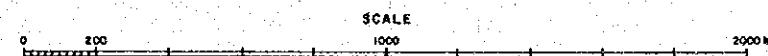


# Pb Anomaly Surface Map, Jambusan-Tai Parit Area



JAPAN INTERNATIONAL COOPERATION AGENCY  
 METAL MINING AGENCY OF JAPAN  
 GEOLOGICAL SURVEY OF MALAYSIA

## JAMBUSAN-TAI PARIT AREA



Contour interval: 5 ppm

--- Approximate outer limit of sampling coverage