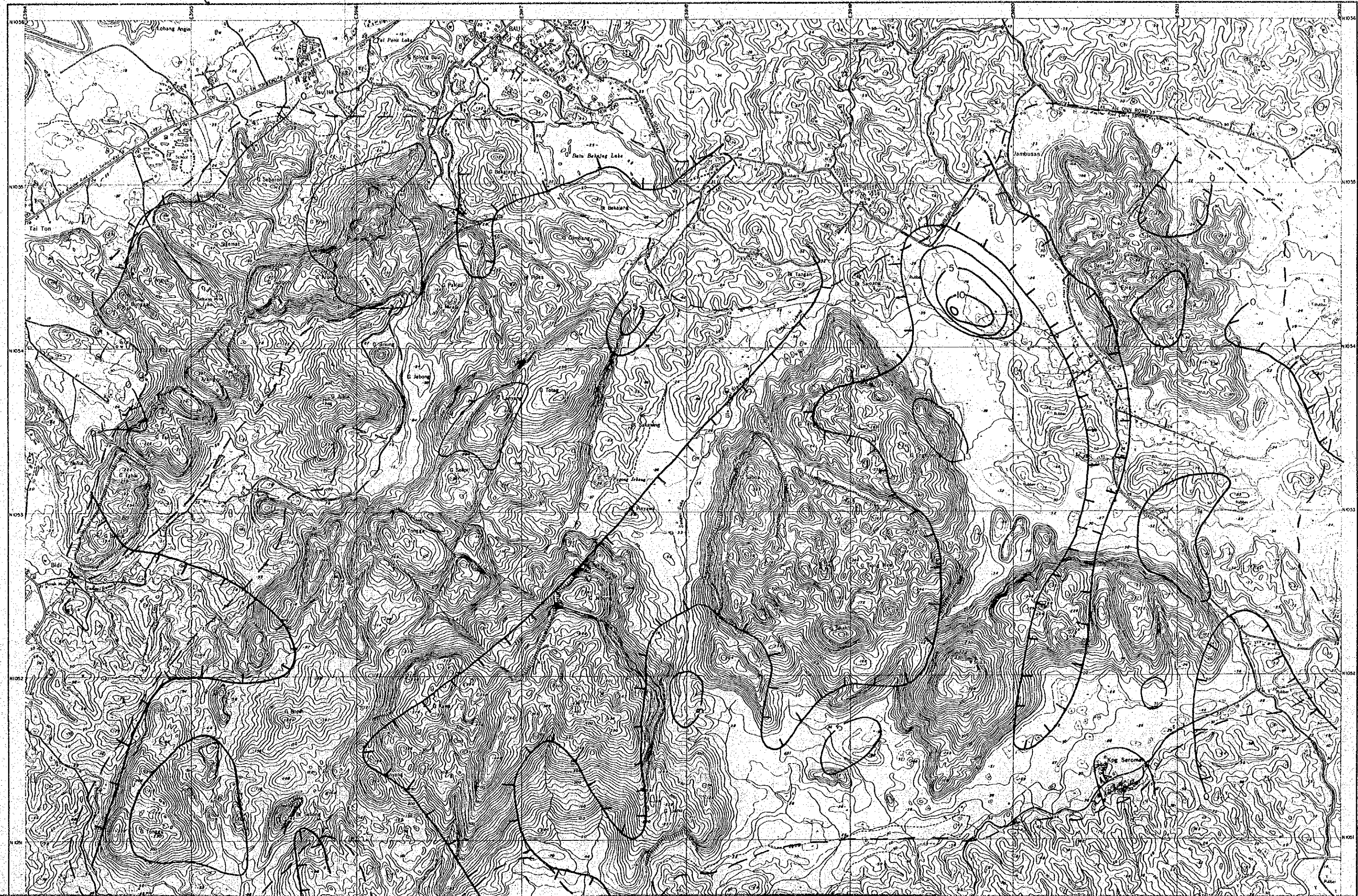


MAP I-15 Cu ANOMALY SURFACE MAP



国際協力事業
10445
図書資料室蔵
Map I-15

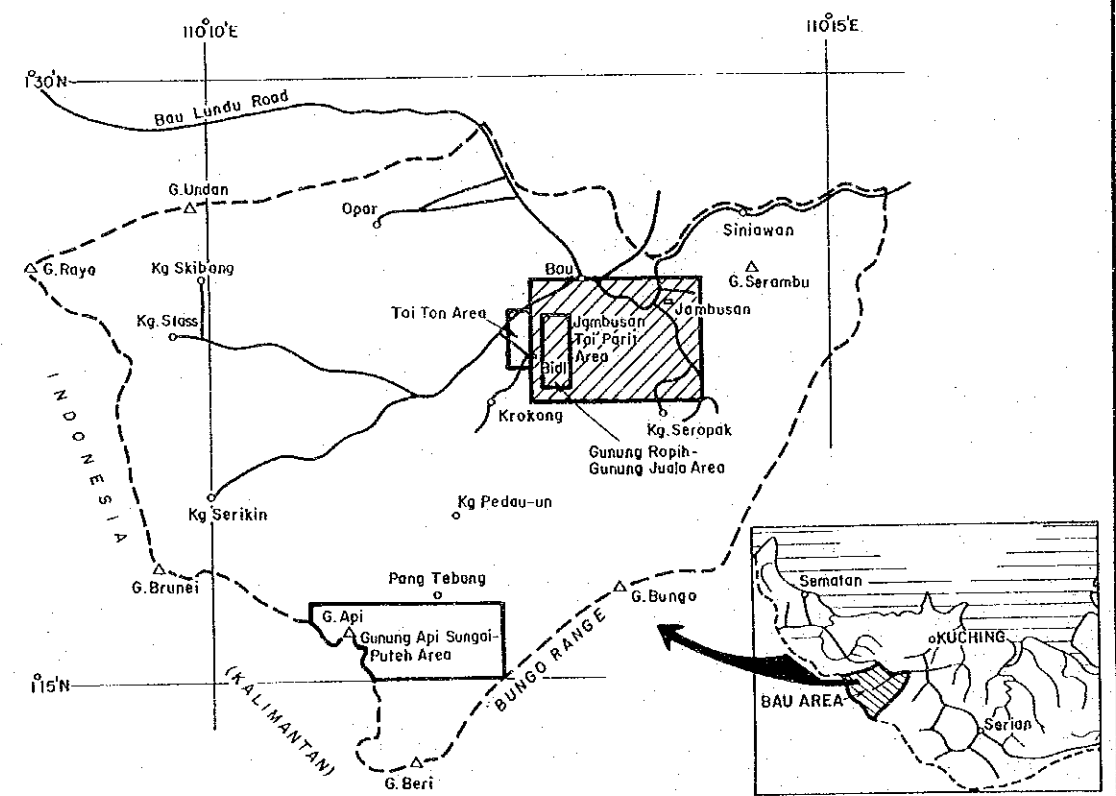
130°N
G. Raya
INDONESIA
115°N
JAP

-15 Cu ANOMALY SURFACE MAP

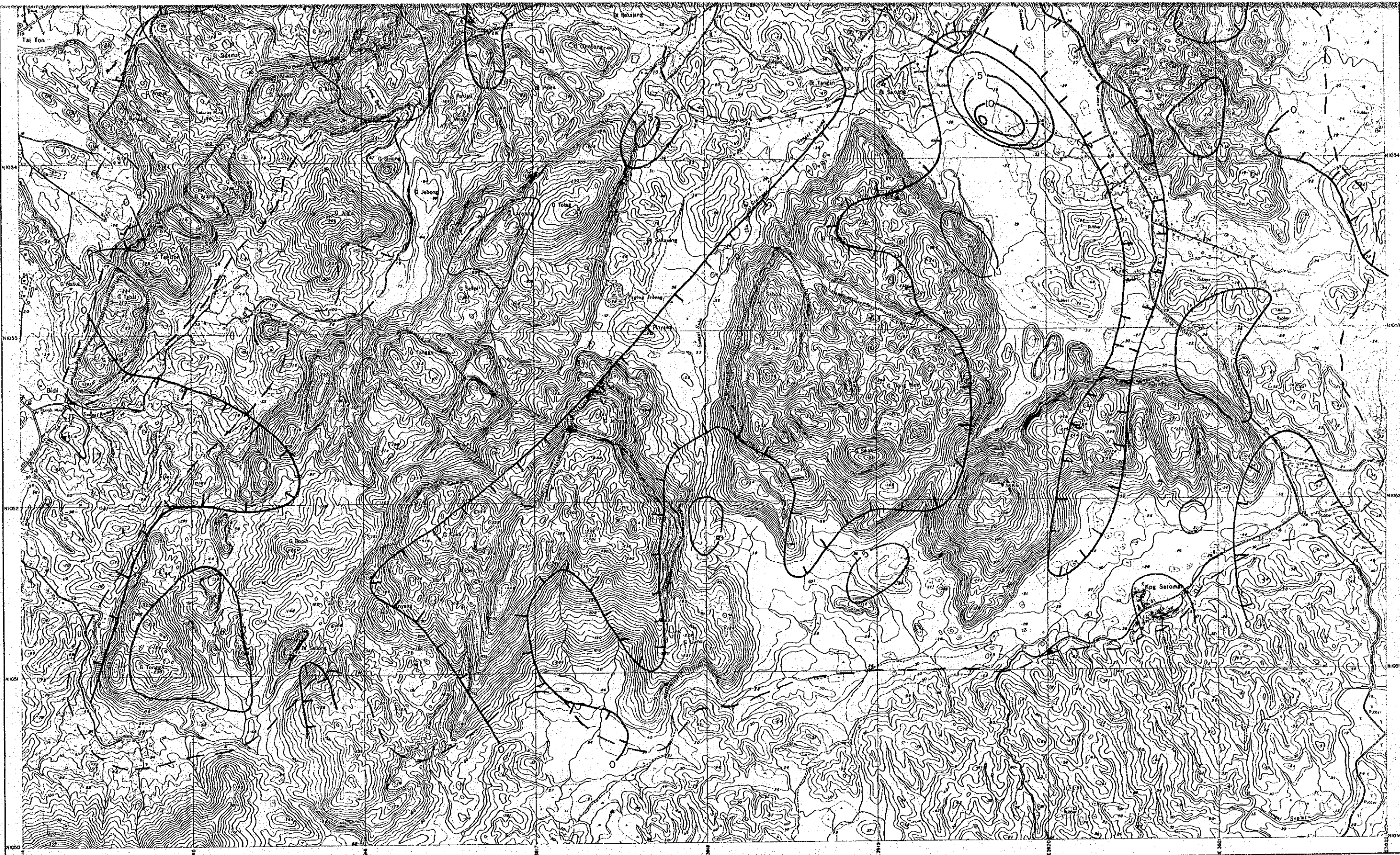


国際協力事業団
10445
図書資料室蔵書
Map 1-15

MINERAL EXPLORATION
BAU AREA
WEST SARAWAK, MALAYSIA
PHASE II
Cu Anomaly Surface Map,
Jambusan-Tai Parit Area

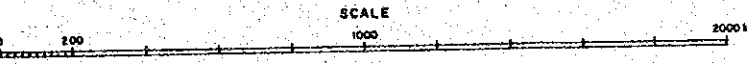


JAPAN INTERNATIONAL COOPERATION AGENCY
METAL MINING AGENCY OF JAPAN
GEOLOGICAL SURVEY OF MALAYSIA



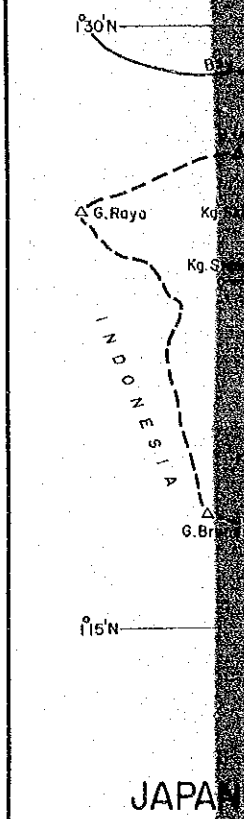
SM 1356/1/84

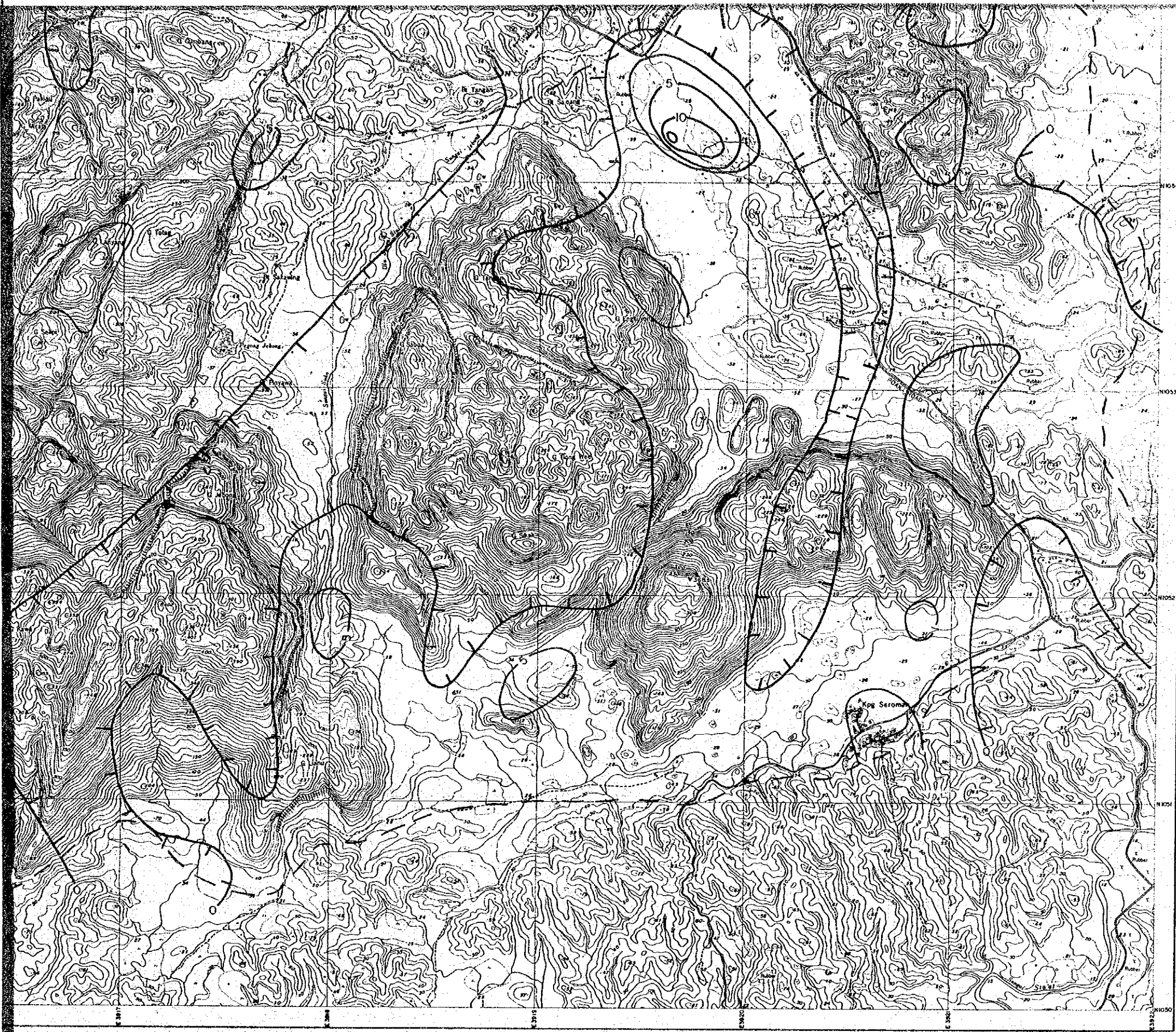
JAMBUSAN-TAI PARIT AREA



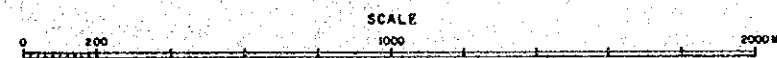
Contour interval: 5ppm

--- Approximate outer limit of sampling coverage





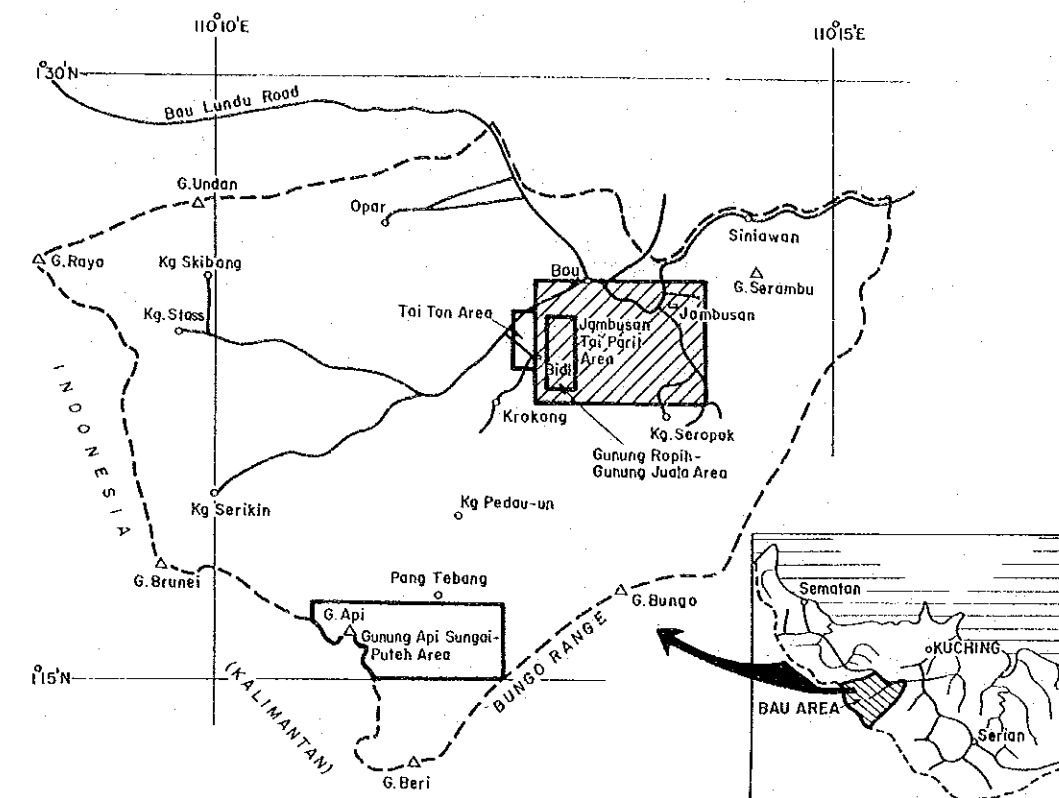
JAMBUSAN-TAI PARIT AREA



Contour interval : 5ppm

--- Approximate outer limit of sampling coverage

Cu Anomaly Surface Map,
Jambusan-Tai Parit Area



JAPAN INTERNATIONAL COOPERATION AGENCY
METAL MINING AGENCY OF JAPAN
GEOLOGICAL SURVEY OF MALAYSIA