

MAP I-14 Ag ANOMALY SURFACE MAP

国際協力事業団

10445

図書資料室蔵書
Map I-14



13°N

G. Raya

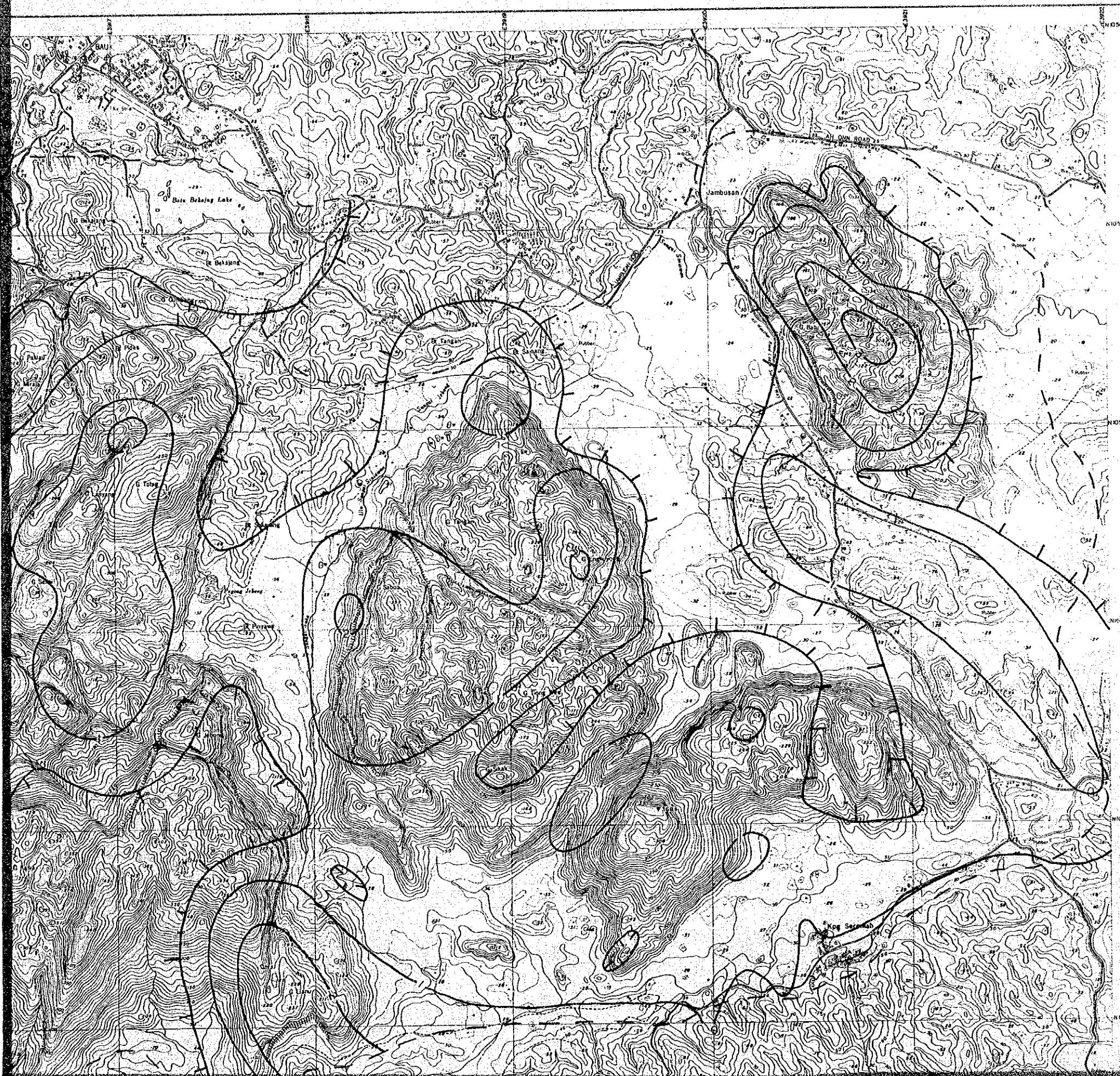
Ko

INDONESIA

12°N

JAPA

I-14 Ag ANOMALY SURFACE MAP

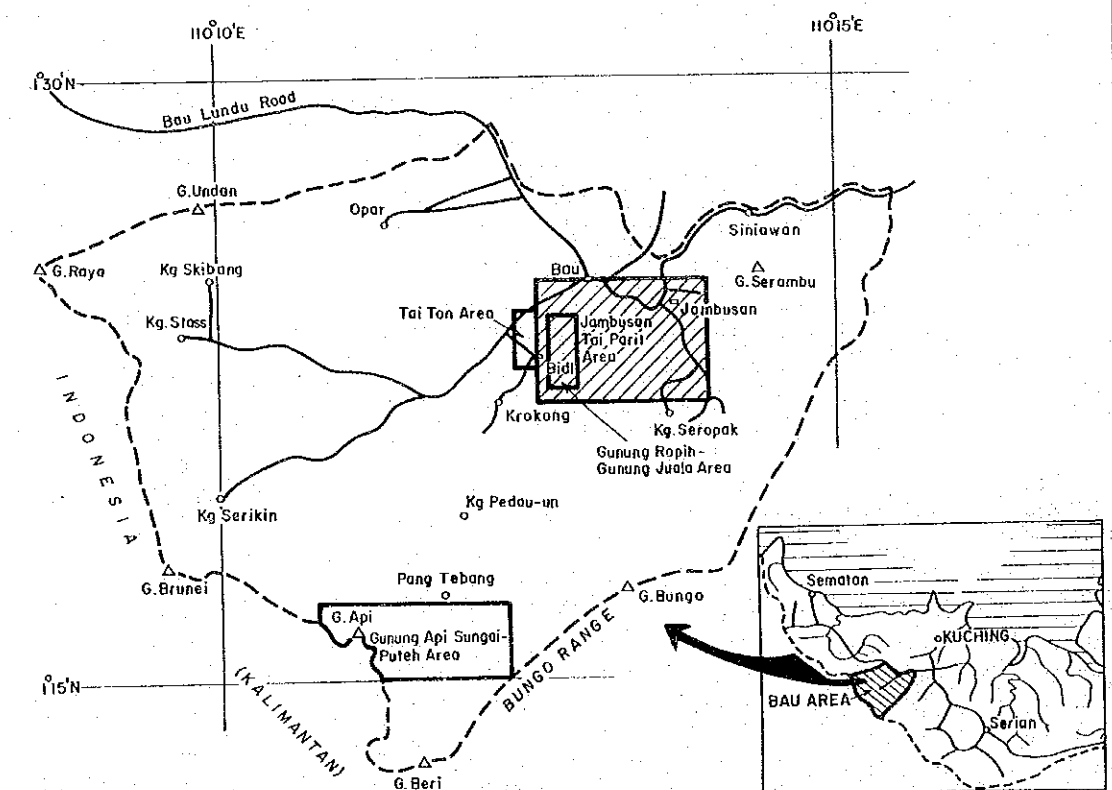


国際協力事業団

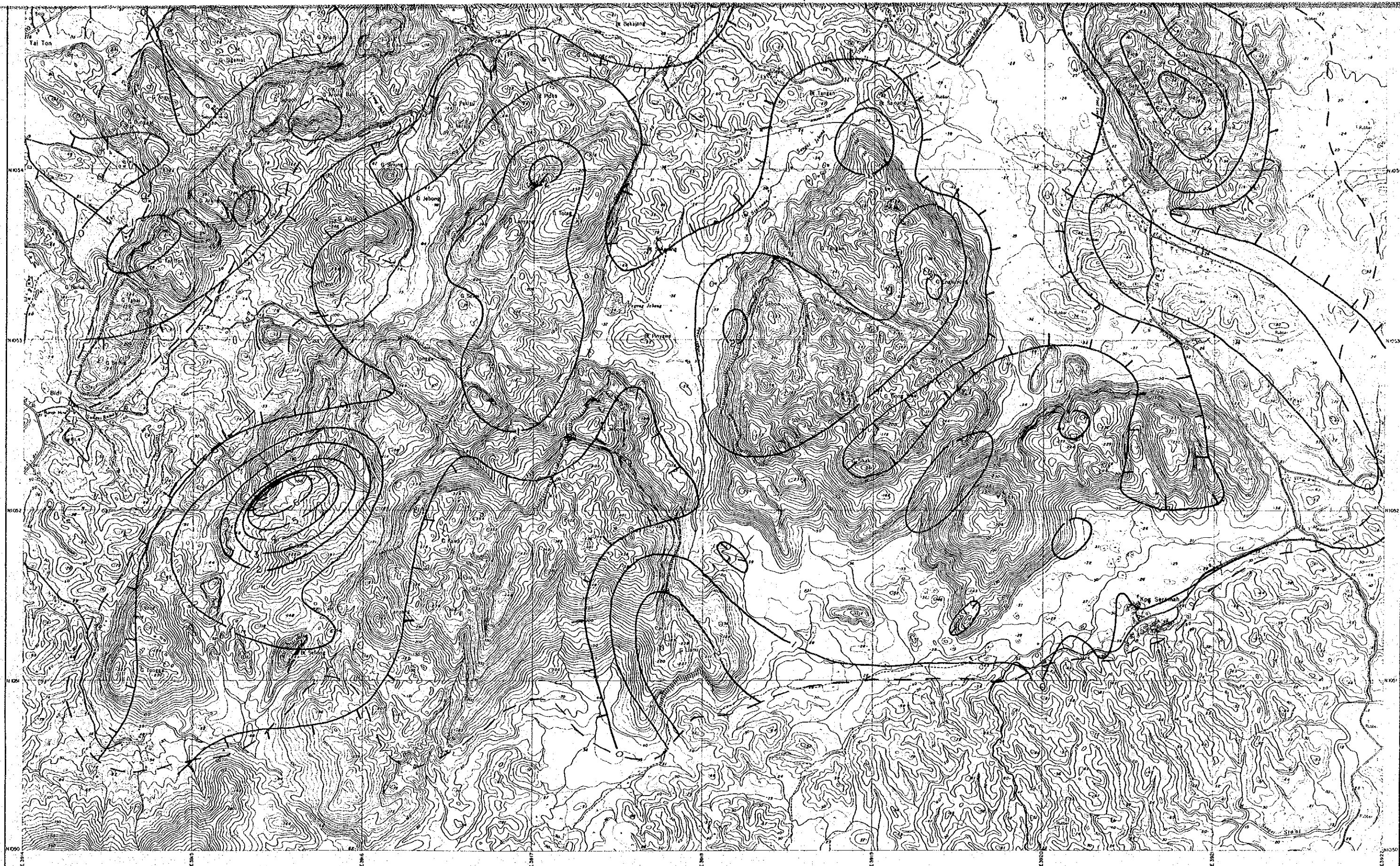
10445

図書資料室蔵書
Map 1-14

MINERAL EXPLORATION
BAU AREA
WEST SARAWAK, MALAYSIA
PHASE II
Ag. Anomaly Surface Map,
Jambusan - Tai Parit Area

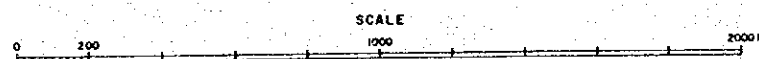


JAPAN INTERNATIONAL COOPERATION AGENCY
METAL MINING AGENCY OF JAPAN
GEOLOGICAL SURVEY OF MALAYSIA



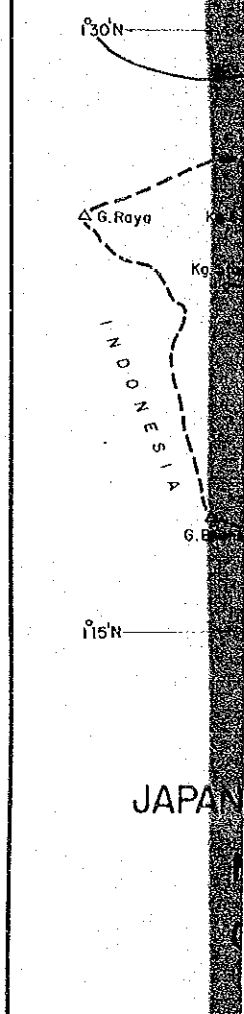
SM 1357/1/84

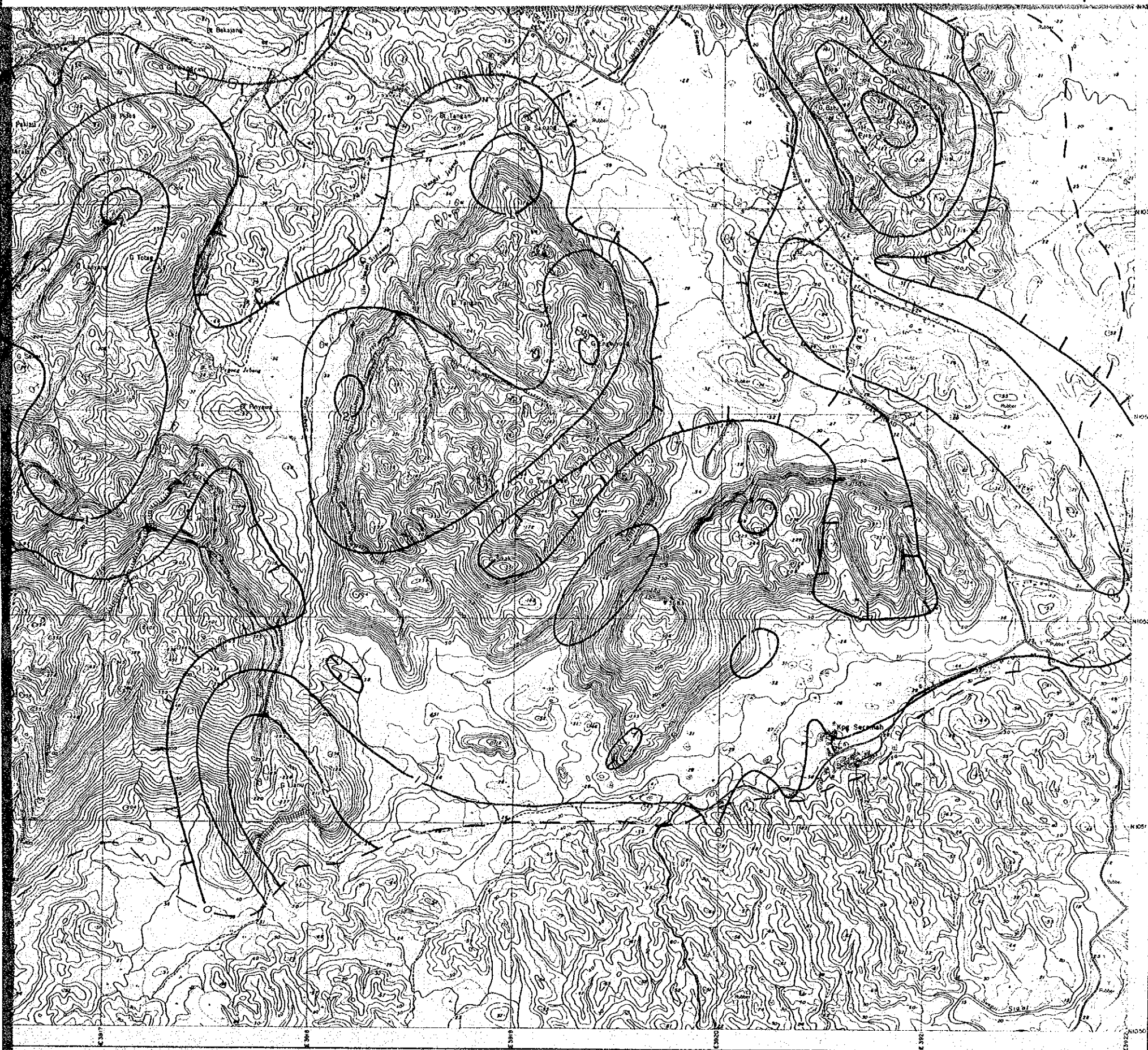
JAMBUSAN-TAI PARIT AREA



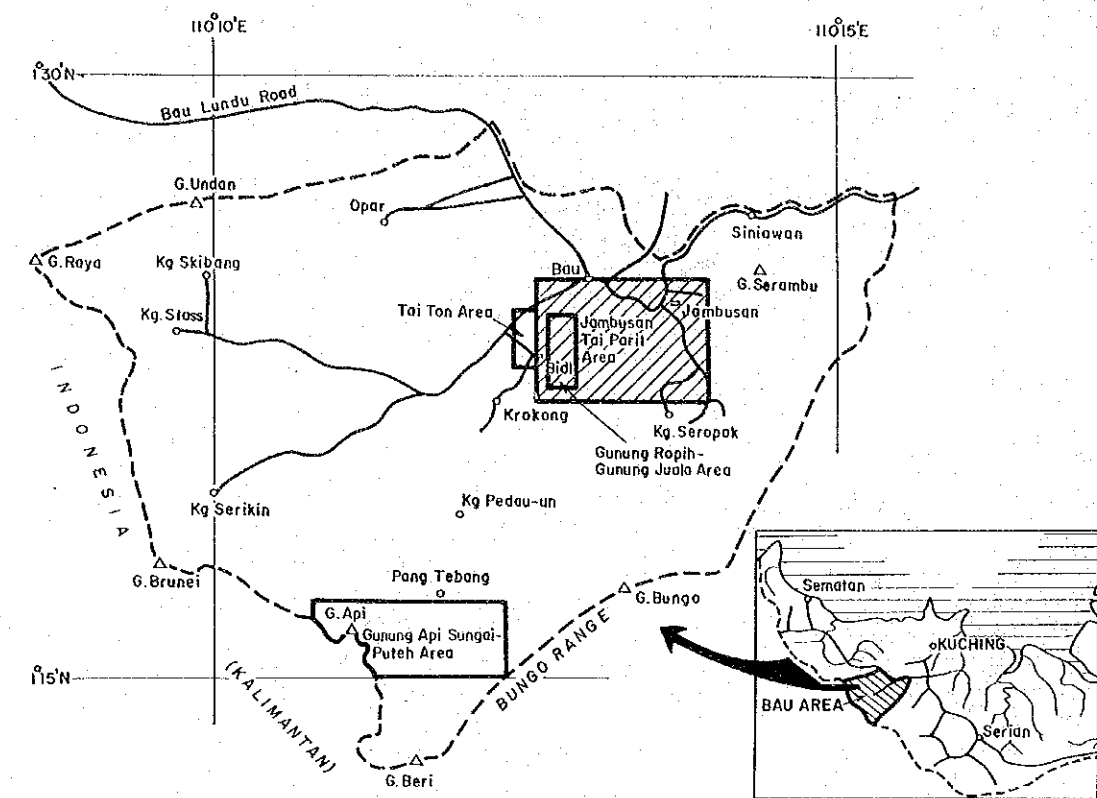
Contour Interval : 1 ppm

--- Approximate outer limit of sampling coverage



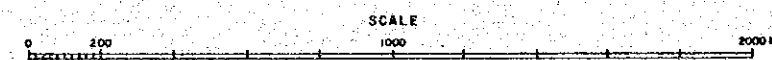


Ag. Anomaly Surface Map, Jambusan - Tai Parit Area



JAPAN INTERNATIONAL COOPERATION AGENCY
METAL MINING AGENCY OF JAPAN
GEOLOGICAL SURVEY OF MALAYSIA

JAMBUSAN-TAI PARIT AREA



Contour Interval 1 ppm

--- Approximate outer limit of sampling coverage