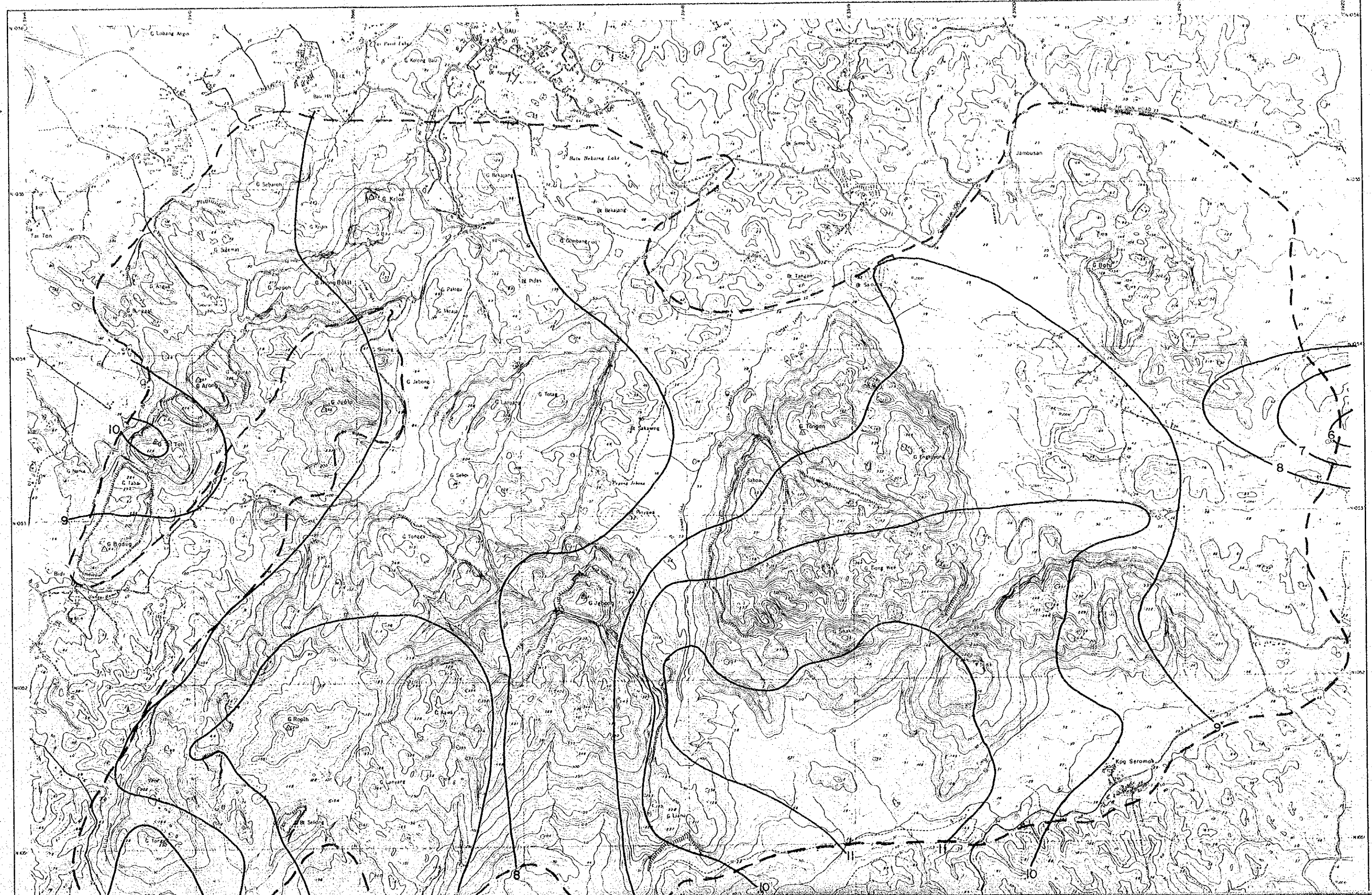


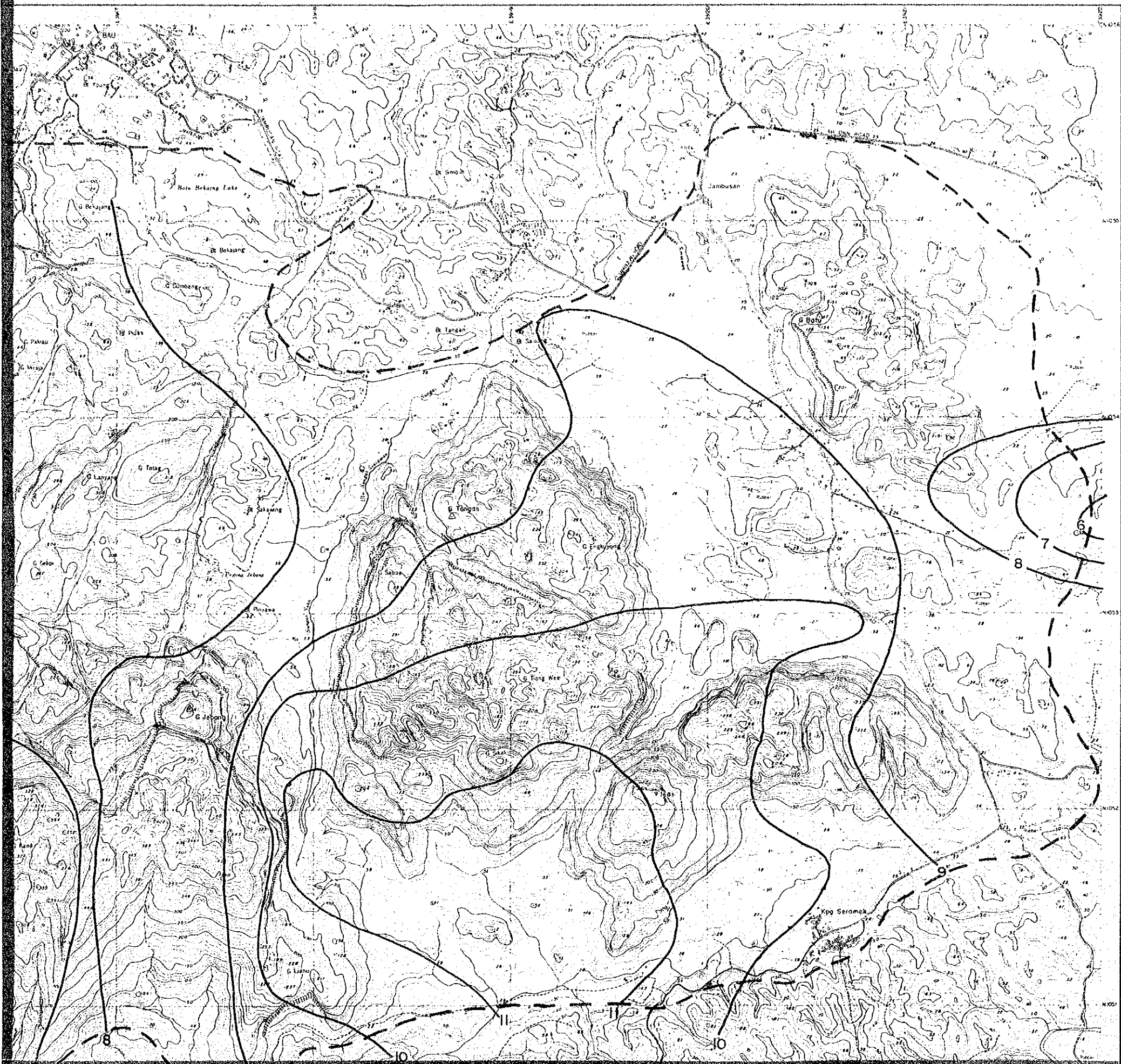
MAP I-6 Zn TREND SURFACE MAP

国際協力事業団
104-4-5
図書資料室蔵書
Map I-6



INDONESIA
JAP

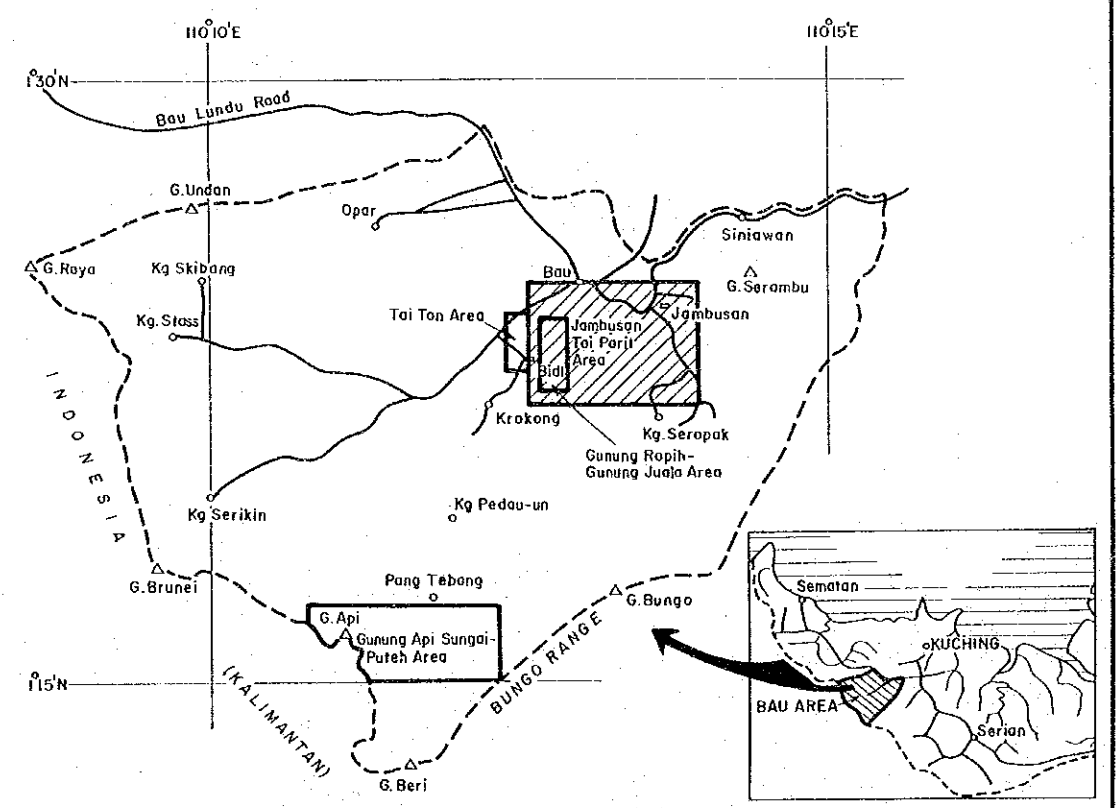
MAP I-6 Zn TREND SURFACE MAP



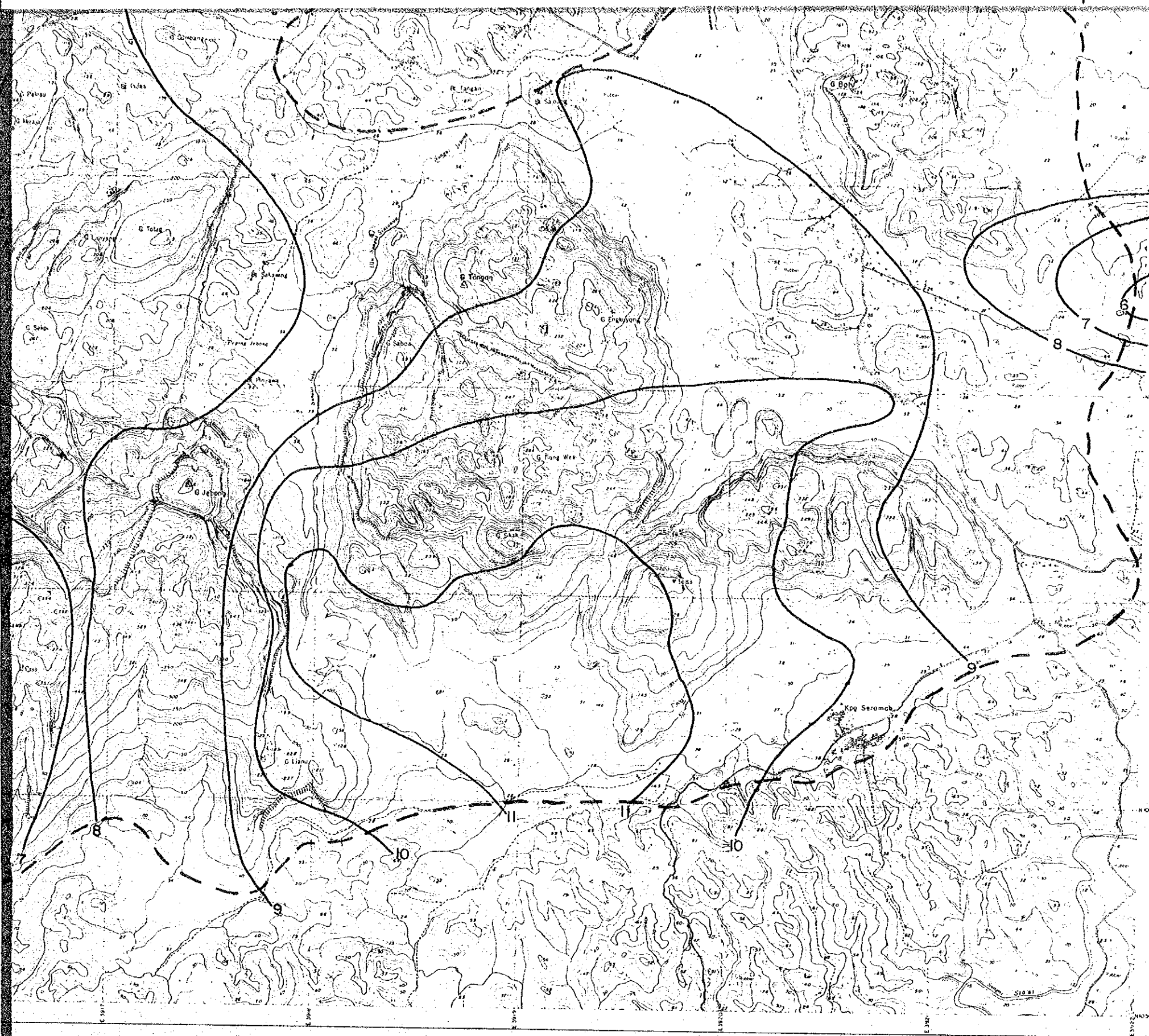
国際協力事業団
10445
図書資料室蔵書
Map I-6

MINERAL EXPLORATION
BAU AREA
WEST SARAWAK, MALAYSIA
PHASE II

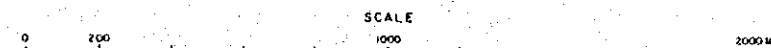
Zn Trend Surface Map,
Jambusan-Tai Parit Area



JAPAN INTERNATIONAL COOPERATION AGENCY
METAL MINING AGENCY OF JAPAN
GEOLOGICAL SURVEY OF MALAYSIA



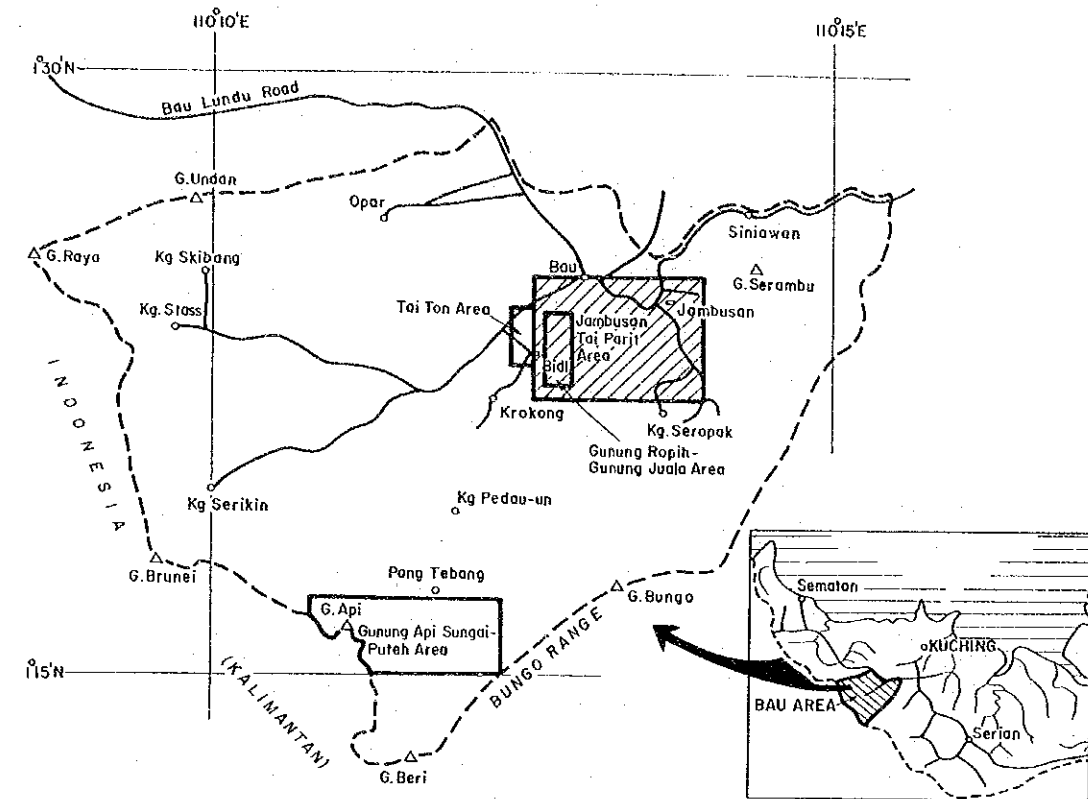
JAMBUSAN-TAI PARIT AREA



--- Approximate outer limit of sampling coverage

Contour interval = 1 ppm

Zn Trend Surface Map, Jambusan-Tai Parit Area



JAPAN INTERNATIONAL COOPERATION AGENCY
METAL MINING AGENCY OF JAPAN
GEOLOGICAL SURVEY OF MALAYSIA

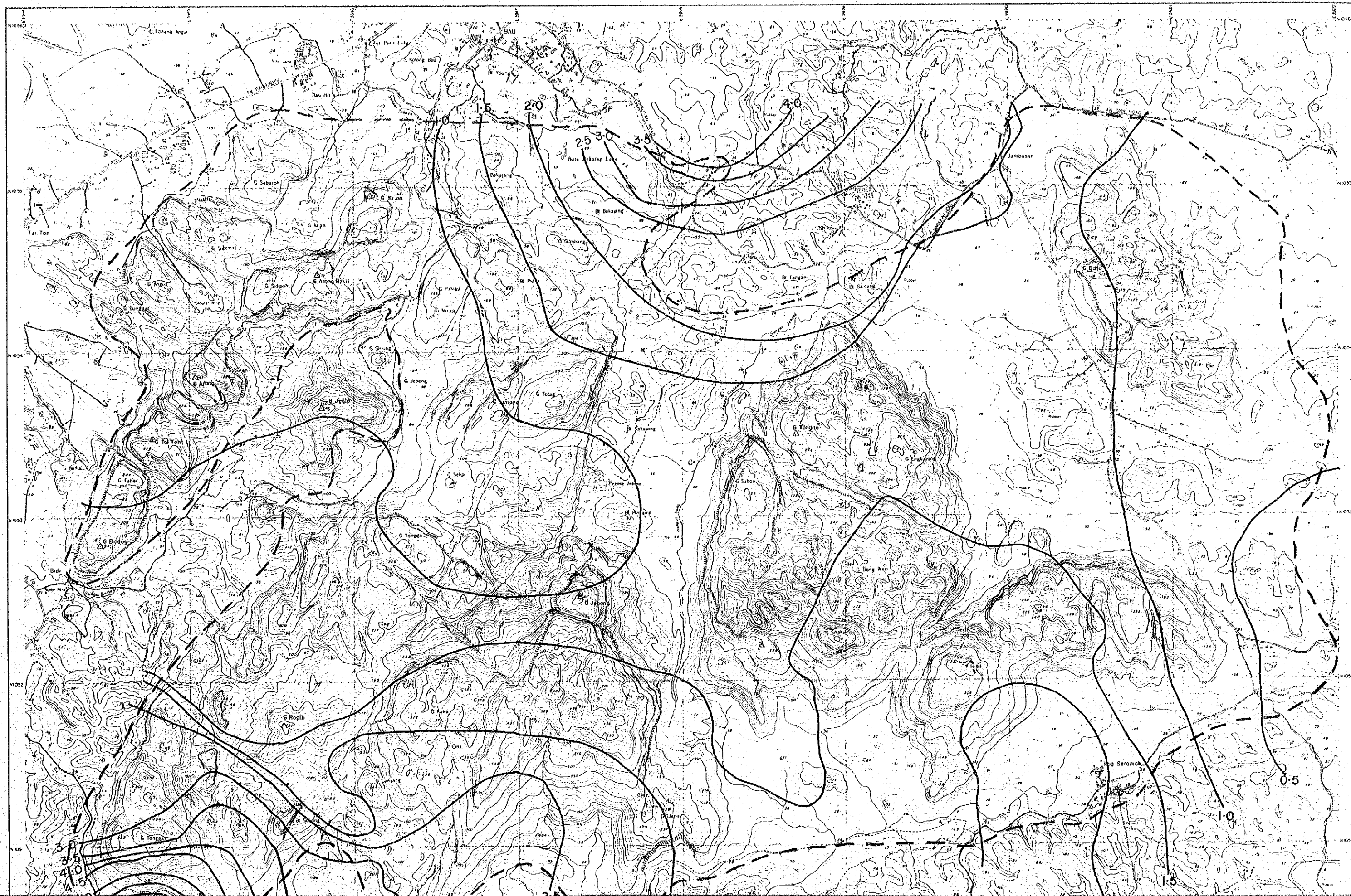
MAP I-7 Mo TREND SURFACE MAP

国際協力事業

10445

図書資料室蔵

Map I-7



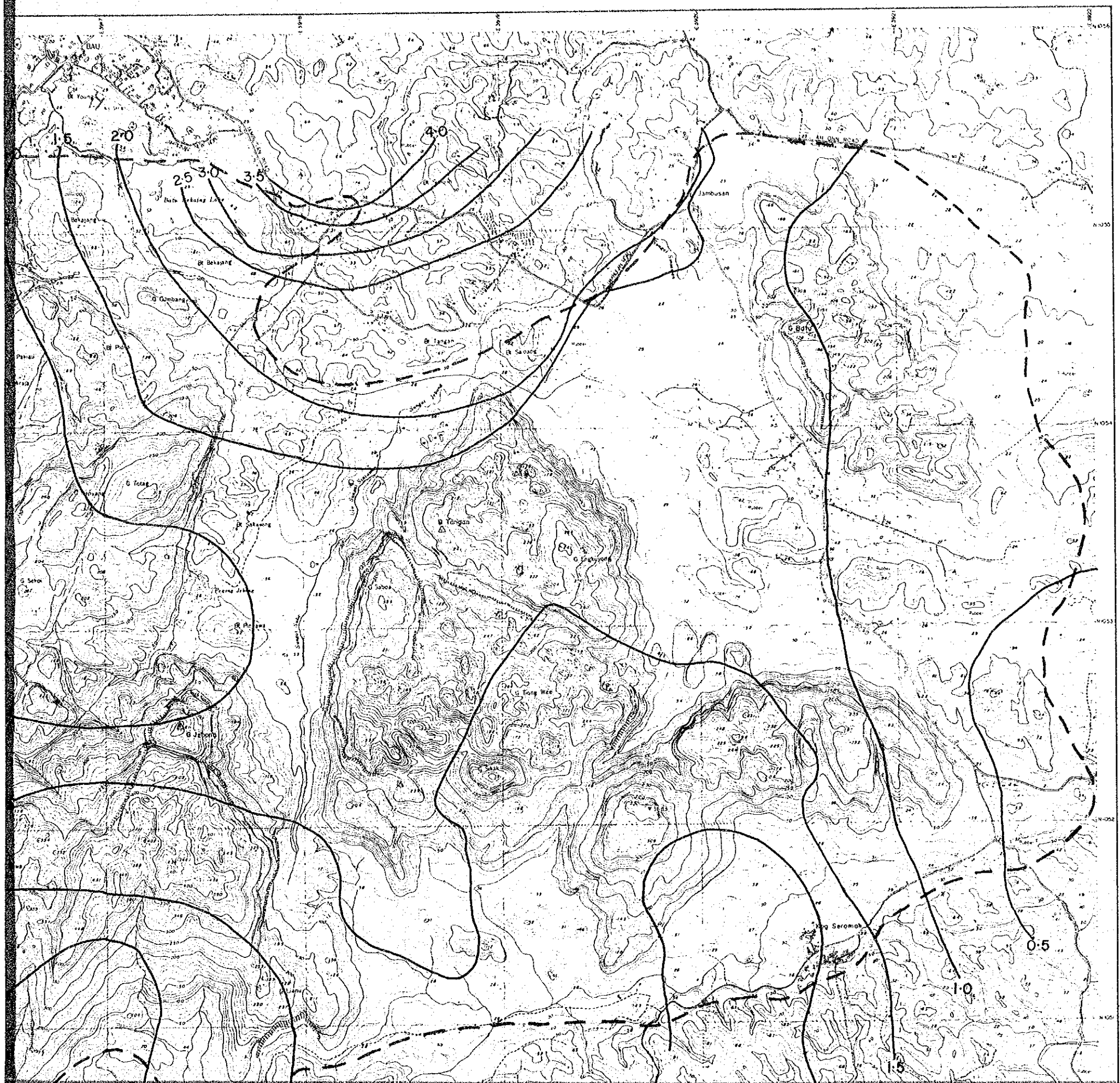
15°N

G. Raya

15°N

JA

MAP I-7 Mo TREND SURFACE MAP



国際協力事業団

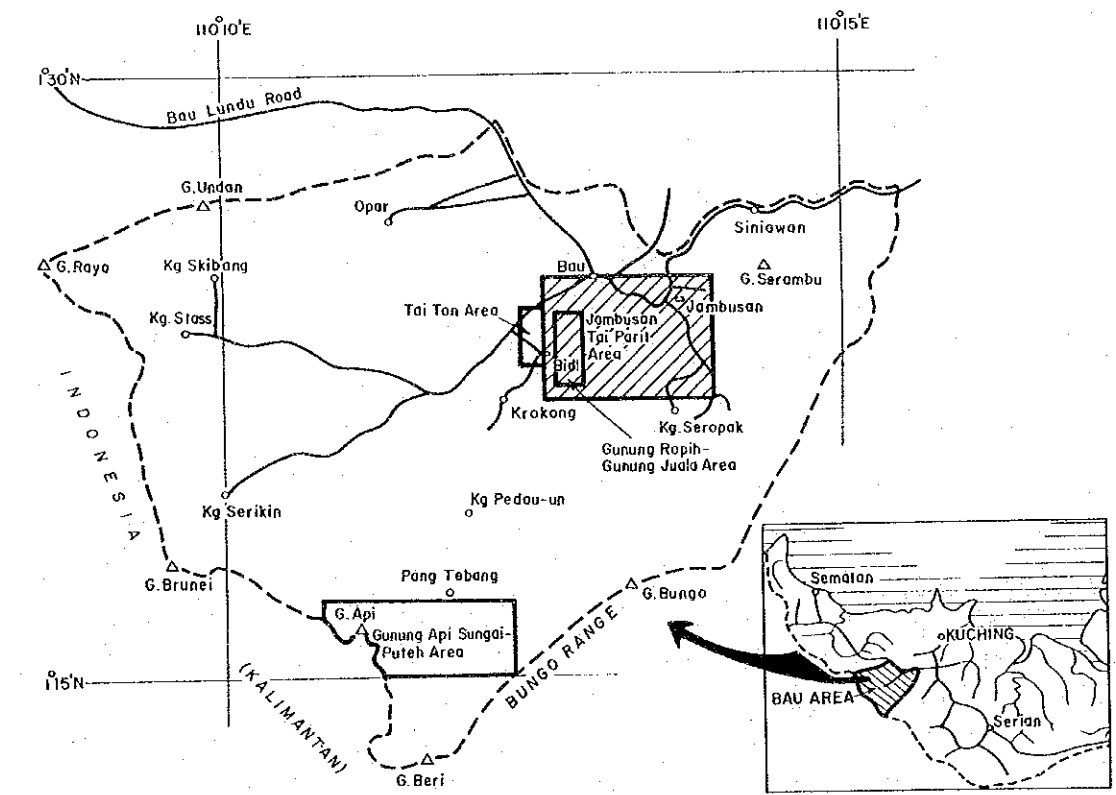
10445

図書資料室蔵書

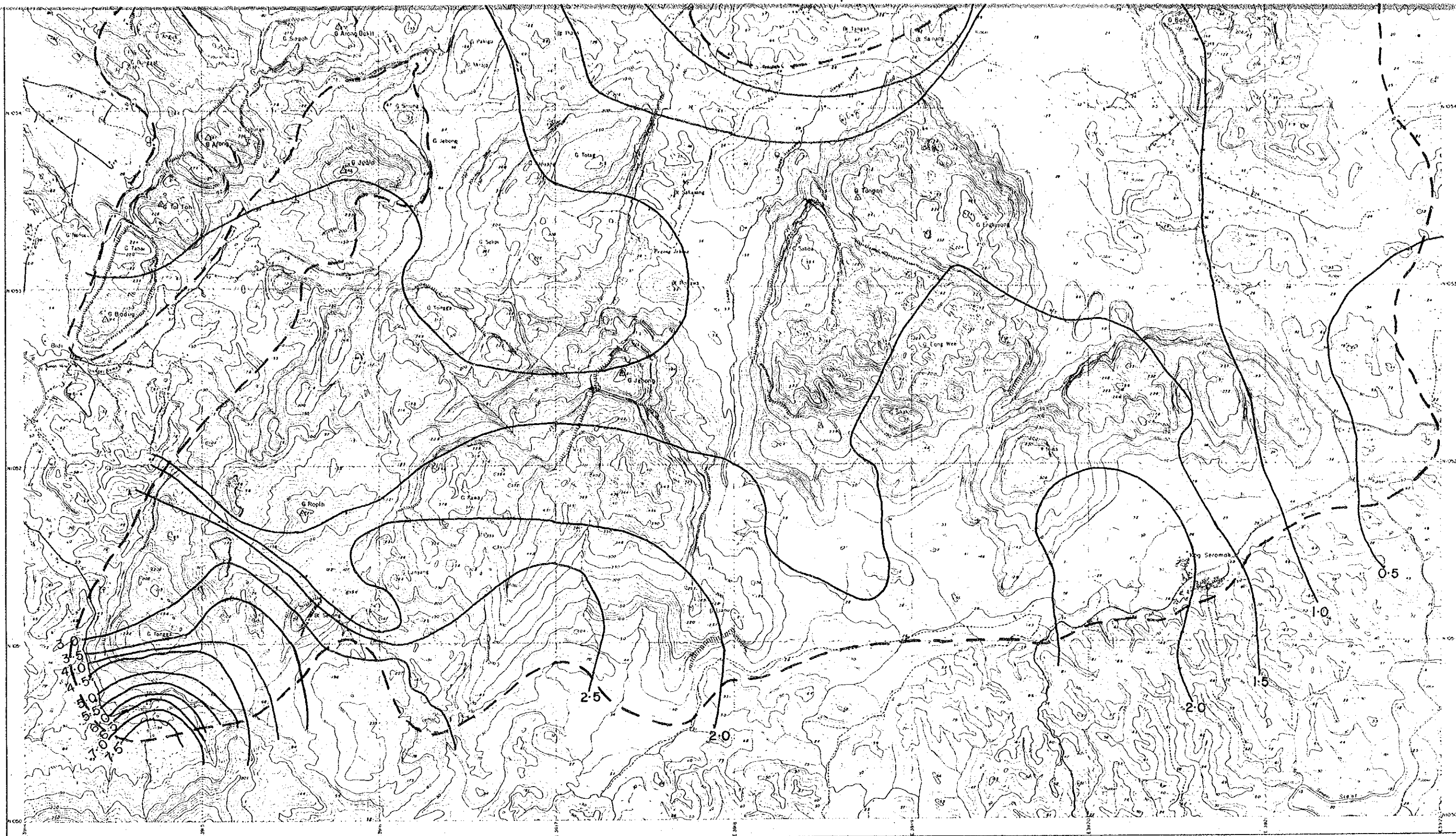
Map I-7

MINERAL EXPLORATION
BAU AREA
WEST SARAWAK, MALAYSIA
PHASE II

Mo Trend Surface Map,
Jambusan-Tai Parit Area

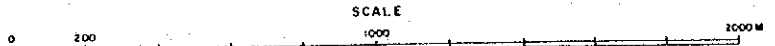


JAPAN INTERNATIONAL COOPERATION AGENCY
METAL MINING AGENCY OF JAPAN
GEOLOGICAL SURVEY OF MALAYSIA



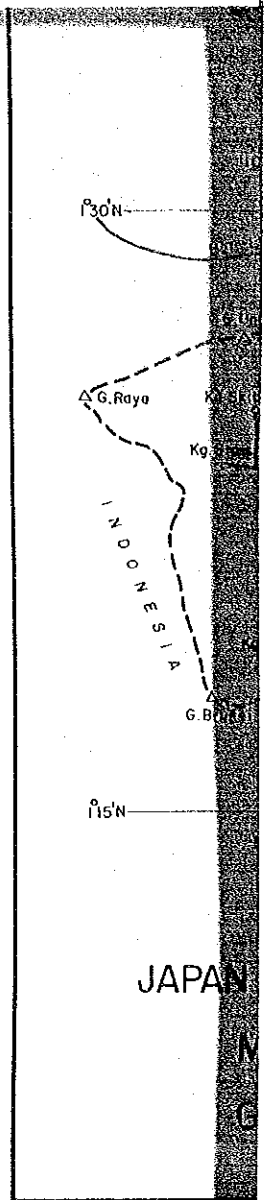
SM1346/1/84

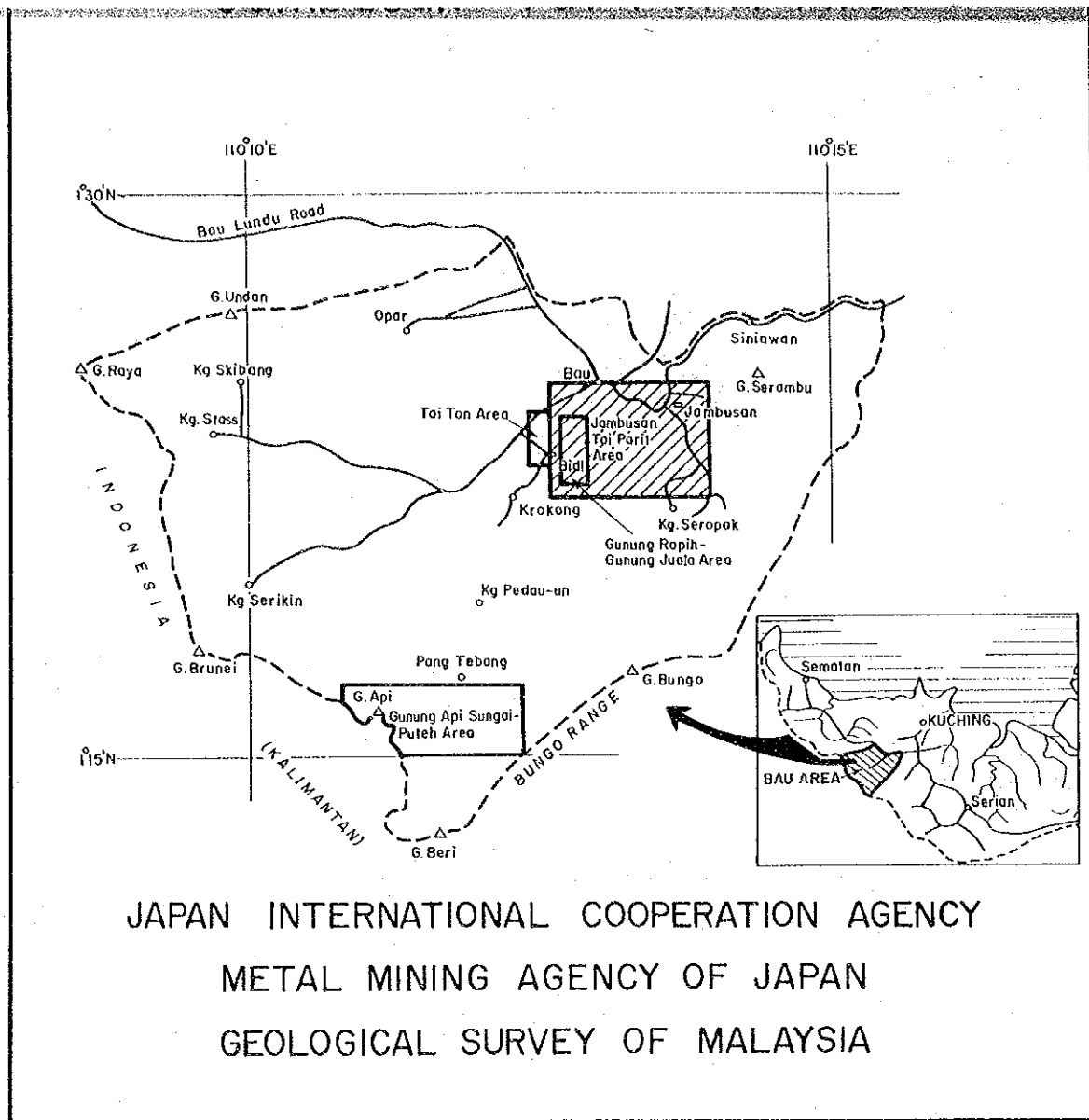
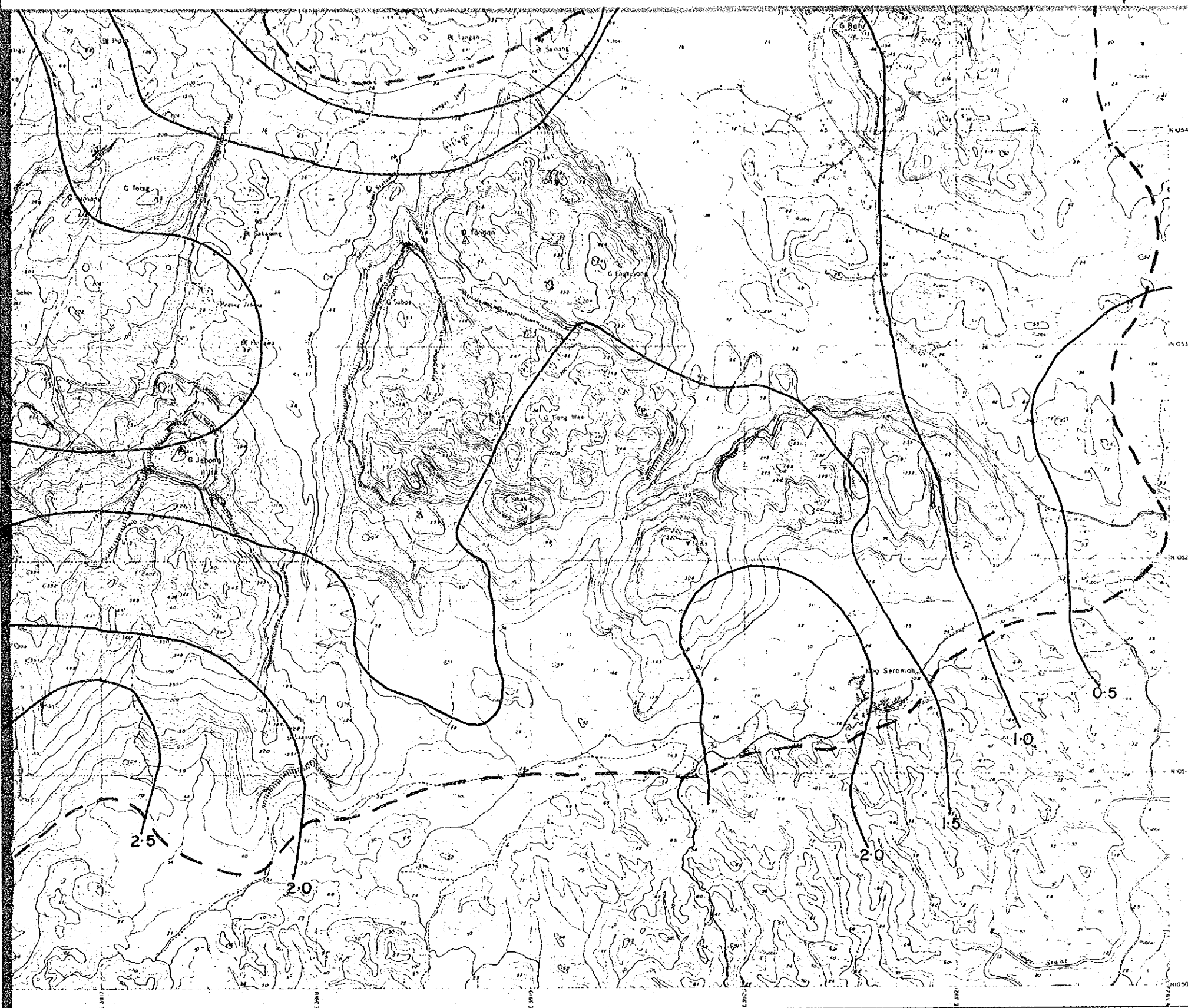
JAMBUSAN-TAI PARIT AREA



--- Approximate outer limit of sampling coverage

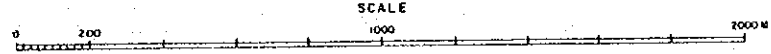
Contour Interval = 0.5 ppm





JAPAN INTERNATIONAL COOPERATION AGENCY
 METAL MINING AGENCY OF JAPAN
 GEOLOGICAL SURVEY OF MALAYSIA

JAMBUSAN-TAI PARIT AREA



--- Approximate outer limit of sampling coverage

Contour Interval = 0.5 ppm