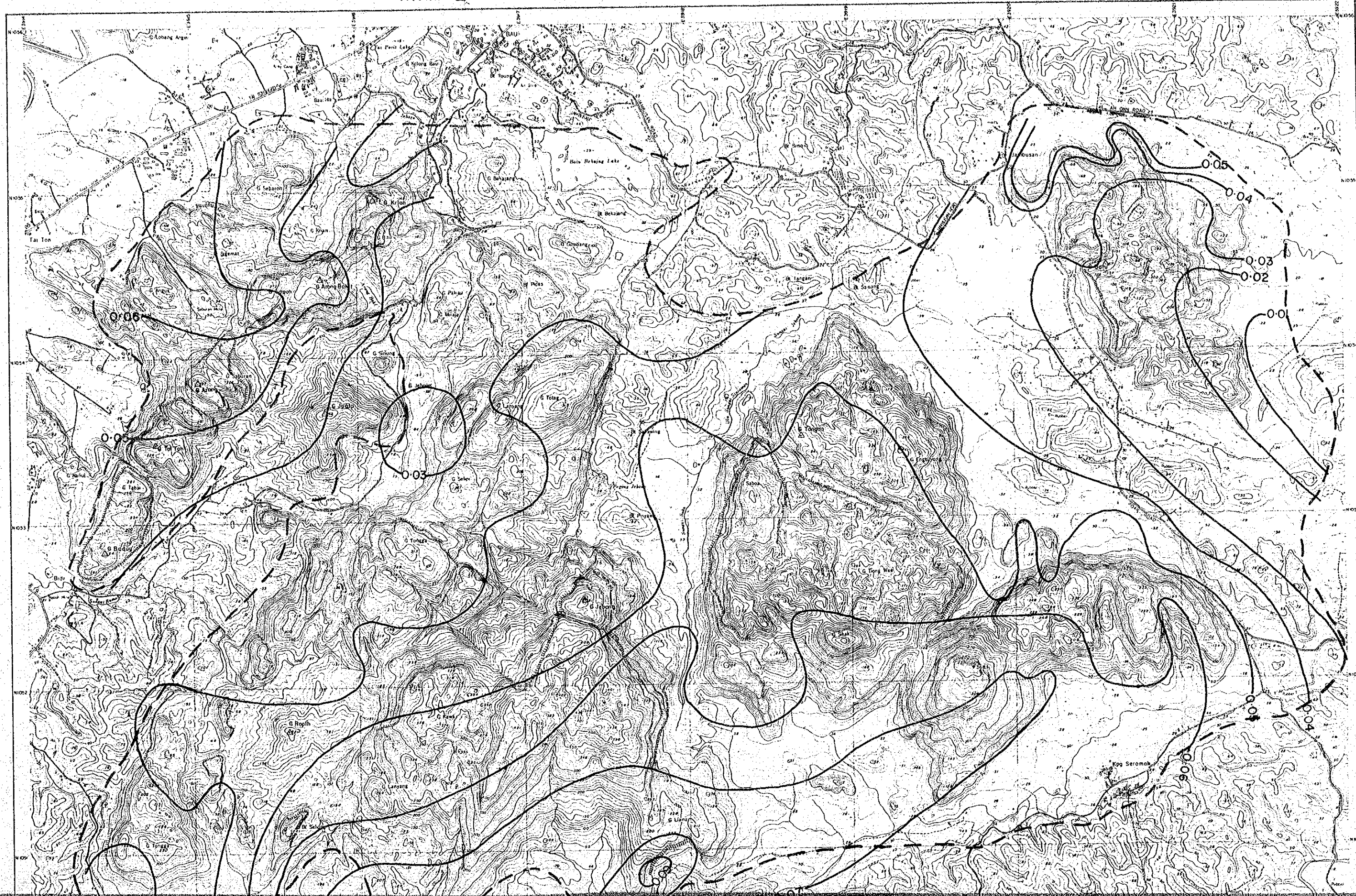


MAP I-2 Au TREND SURFACE MAP



国際協力
1044
図書資料
Map I-2

13°N

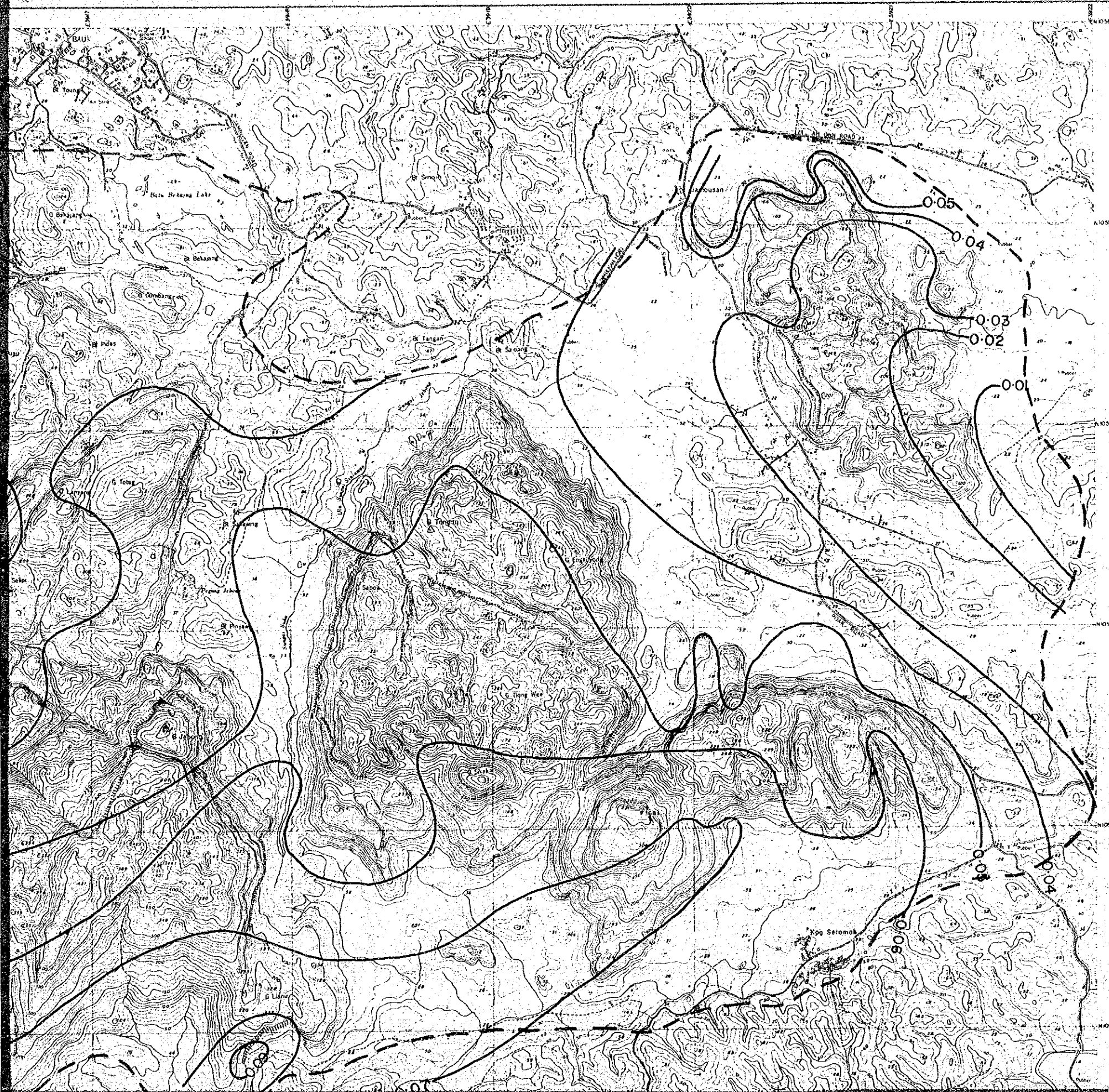
G. Raya

INDONESIA

115°E

J

I-2 Au TREND SURFACE MAP



国際協力事業団

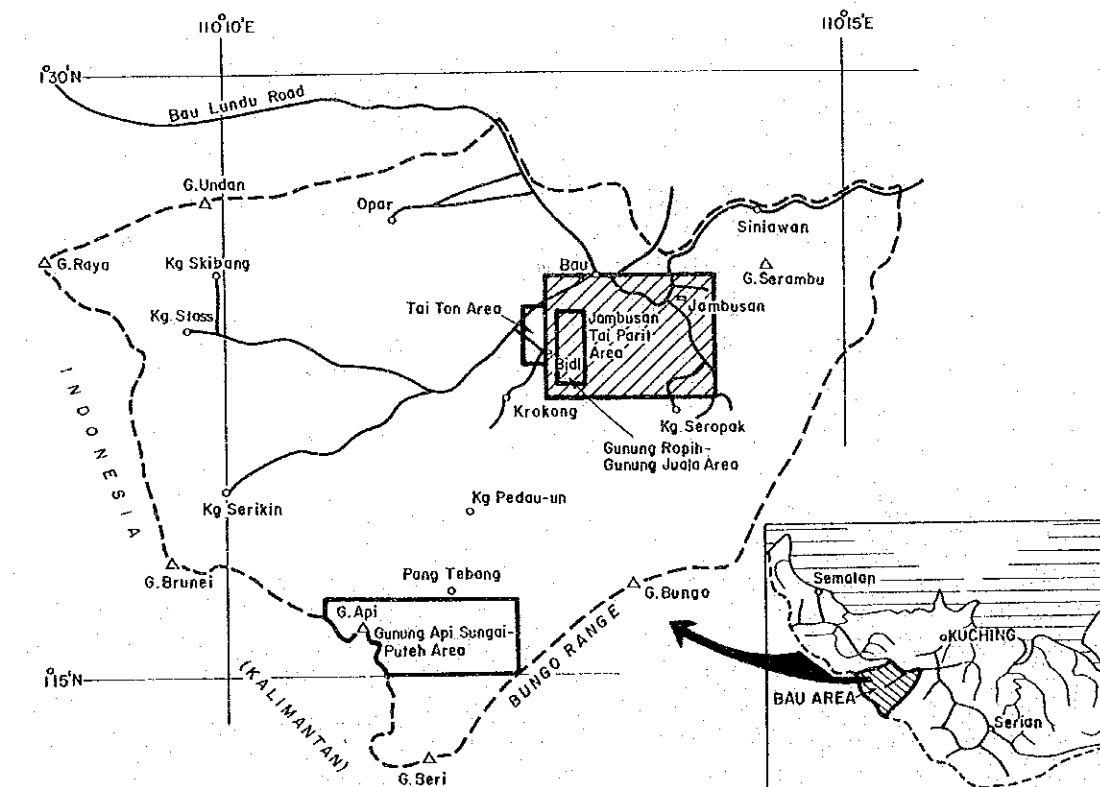
10445

図書資料室蔵書

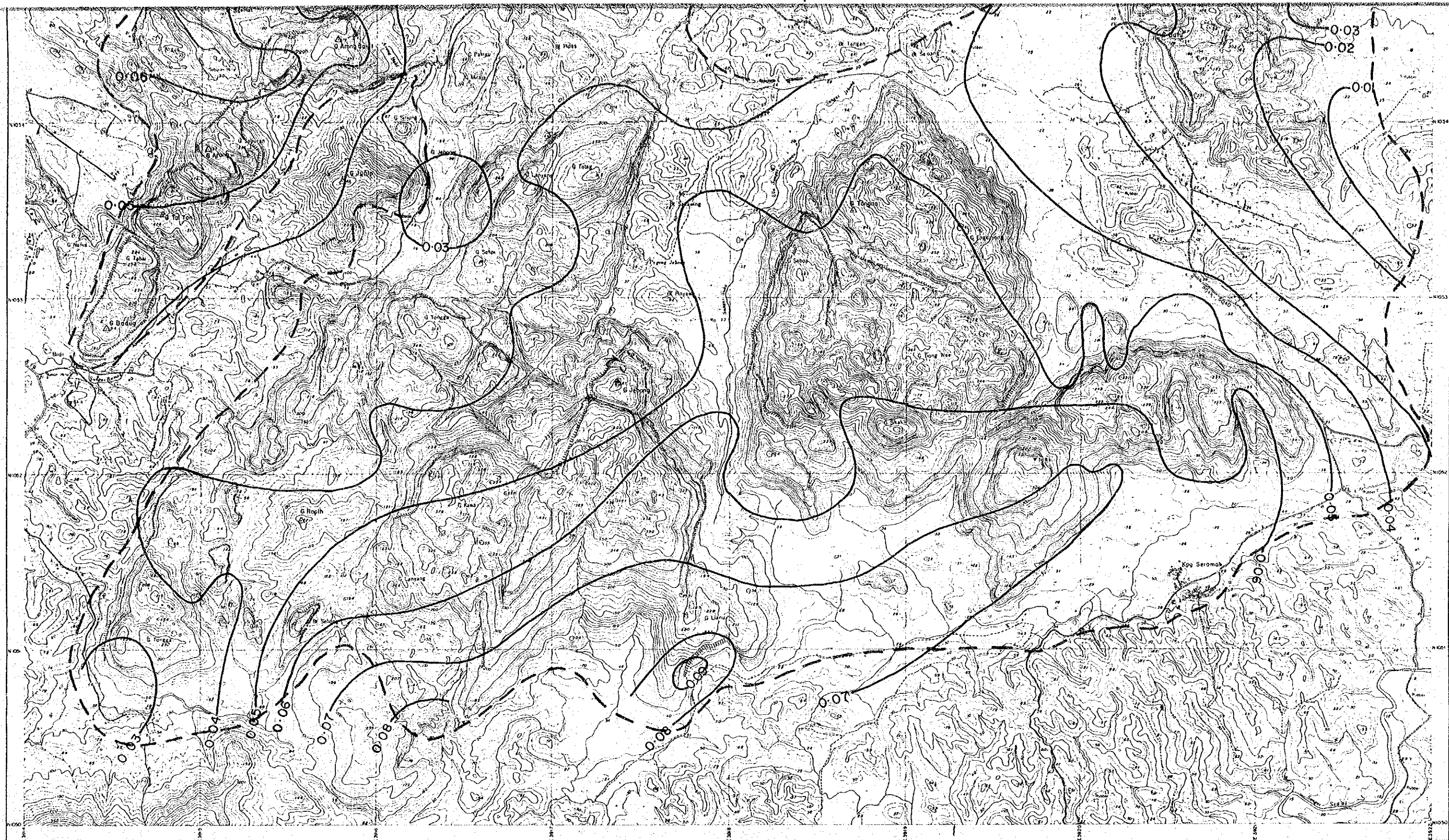
Map I-2

MINERAL EXPLORATION
BAU AREA
WEST SARAWAK, MALAYSIA
PHASE II

Au Trend Surface Map,
Jambusan-Tai Parit Area

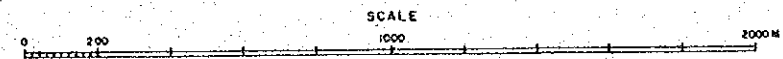


JAPAN INTERNATIONAL COOPERATION AGENCY
METAL MINING AGENCY OF JAPAN
GEOLOGICAL SURVEY OF MALAYSIA



SM1338/1/84

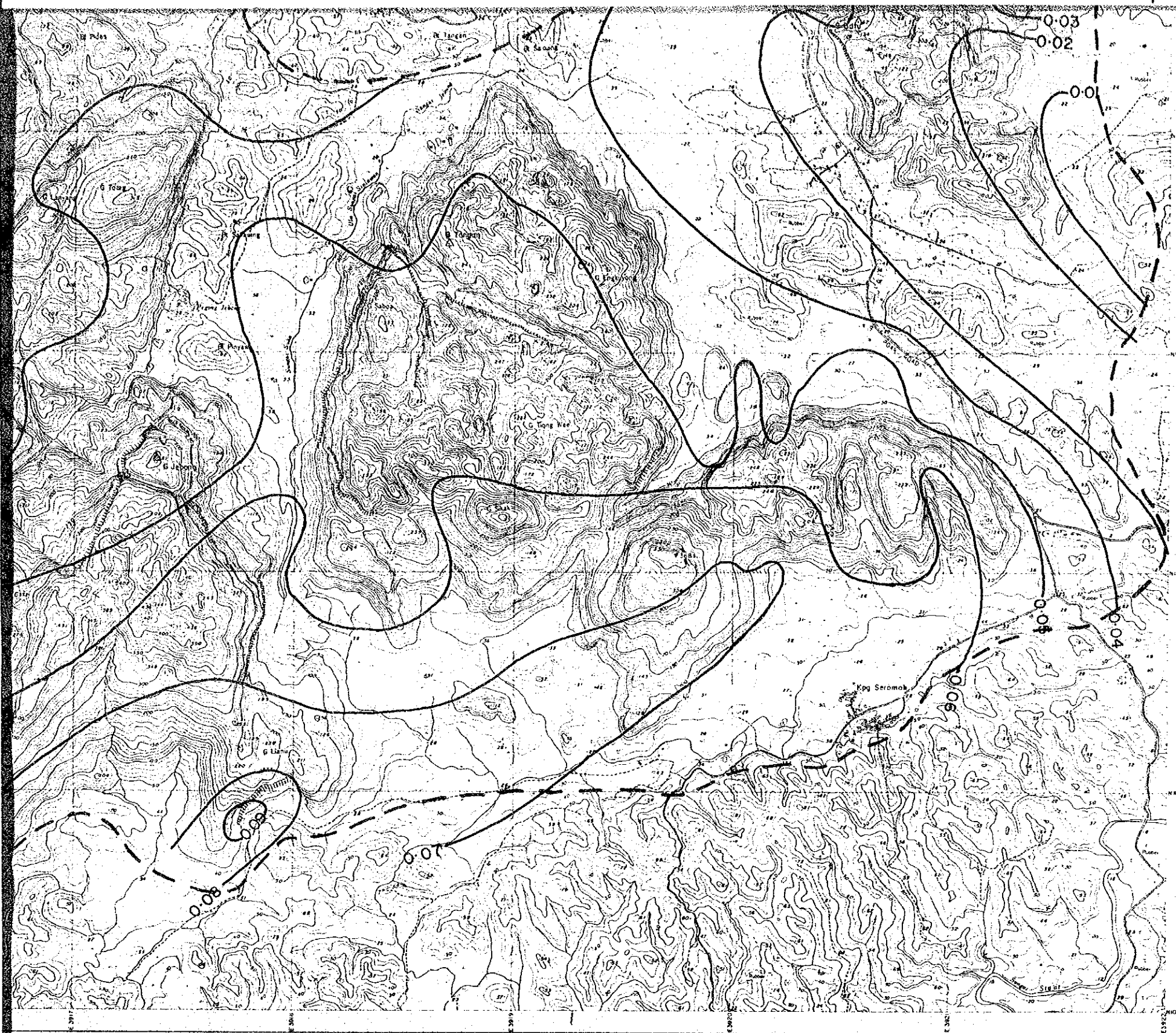
JAMBUSAN-TAI PARIT AREA



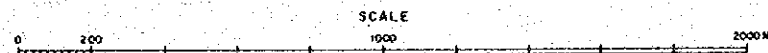
--- Approximate outer limit of sampling coverage

Contour interval = 0.01ppm

13°0'N
101°0'N
102°0'N
103°0'N
104°0'N
105°0'N
106°0'N
107°0'N
108°0'N
109°0'N
110°0'N
111°0'N
112°0'N
113°0'N
114°0'N
115°0'N
116°0'N
117°0'N
118°0'N
119°0'N
120°0'N
121°0'N
122°0'N
123°0'N
124°0'N
125°0'N
126°0'N
127°0'N
128°0'N
129°0'N
130°0'N
131°0'N
132°0'N
133°0'N
134°0'N
135°0'N
136°0'N
137°0'N
138°0'N
139°0'N
140°0'N
141°0'N
142°0'N
143°0'N
144°0'N
145°0'N
146°0'N
147°0'N
148°0'N
149°0'N
150°0'N
151°0'N
152°0'N
153°0'N
154°0'N
155°0'N
156°0'N
157°0'N
158°0'N
159°0'N
160°0'N
161°0'N
162°0'N
163°0'N
164°0'N
165°0'N
166°0'N
167°0'N
168°0'N
169°0'N
170°0'N
171°0'N
172°0'N
173°0'N
174°0'N
175°0'N
176°0'N
177°0'N
178°0'N
179°0'N
180°0'N

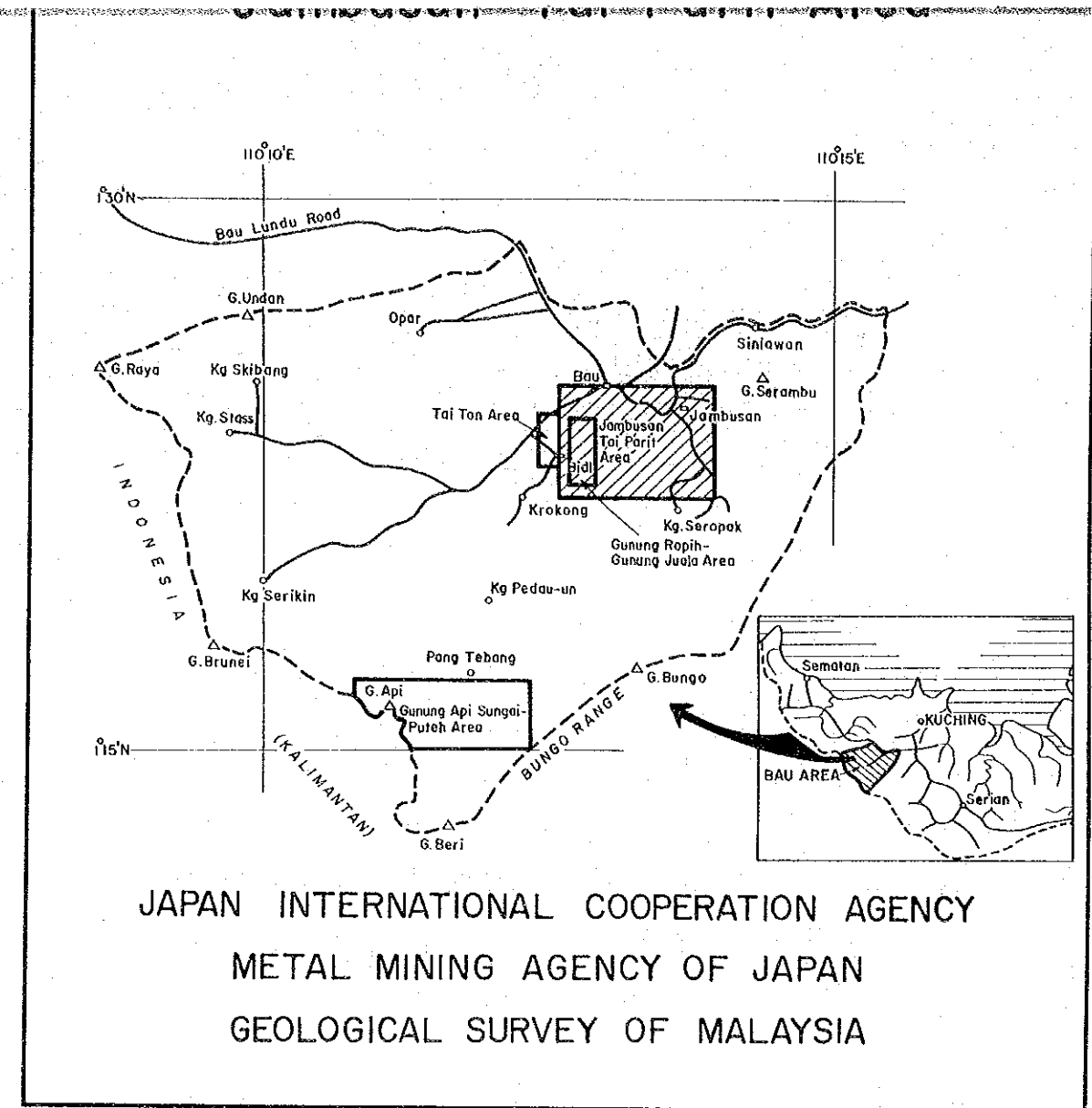


JAMBUSAN-TAI PARIT AREA



--- Approximate outer limit of sampling coverage

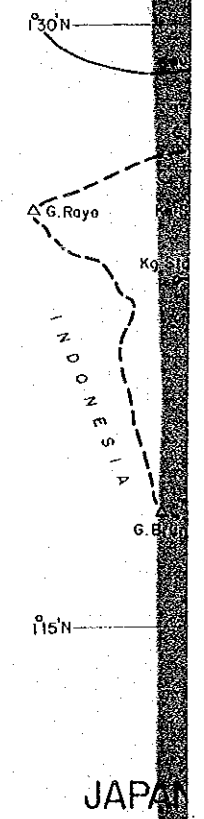
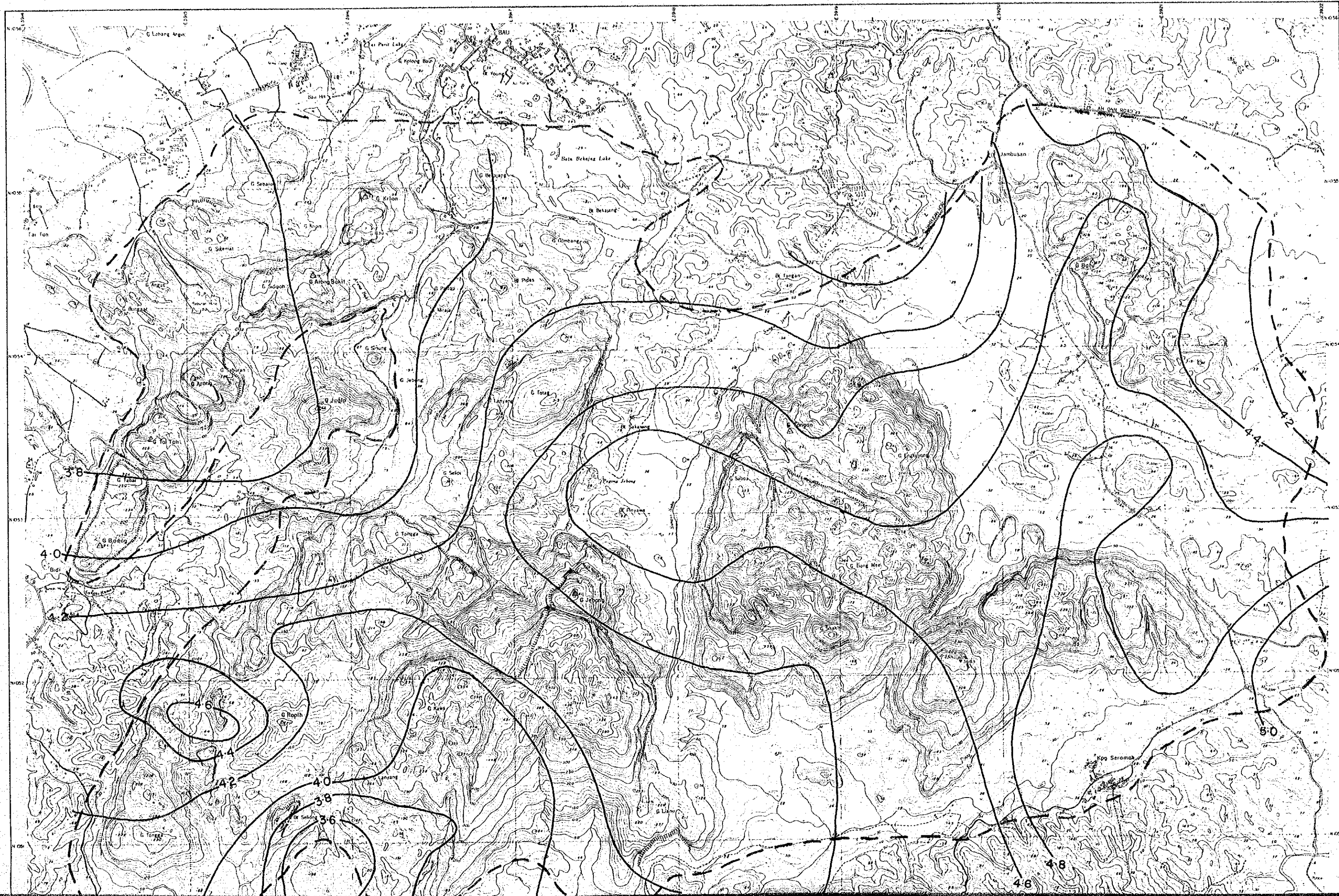
Contour interval = 0.01ppm



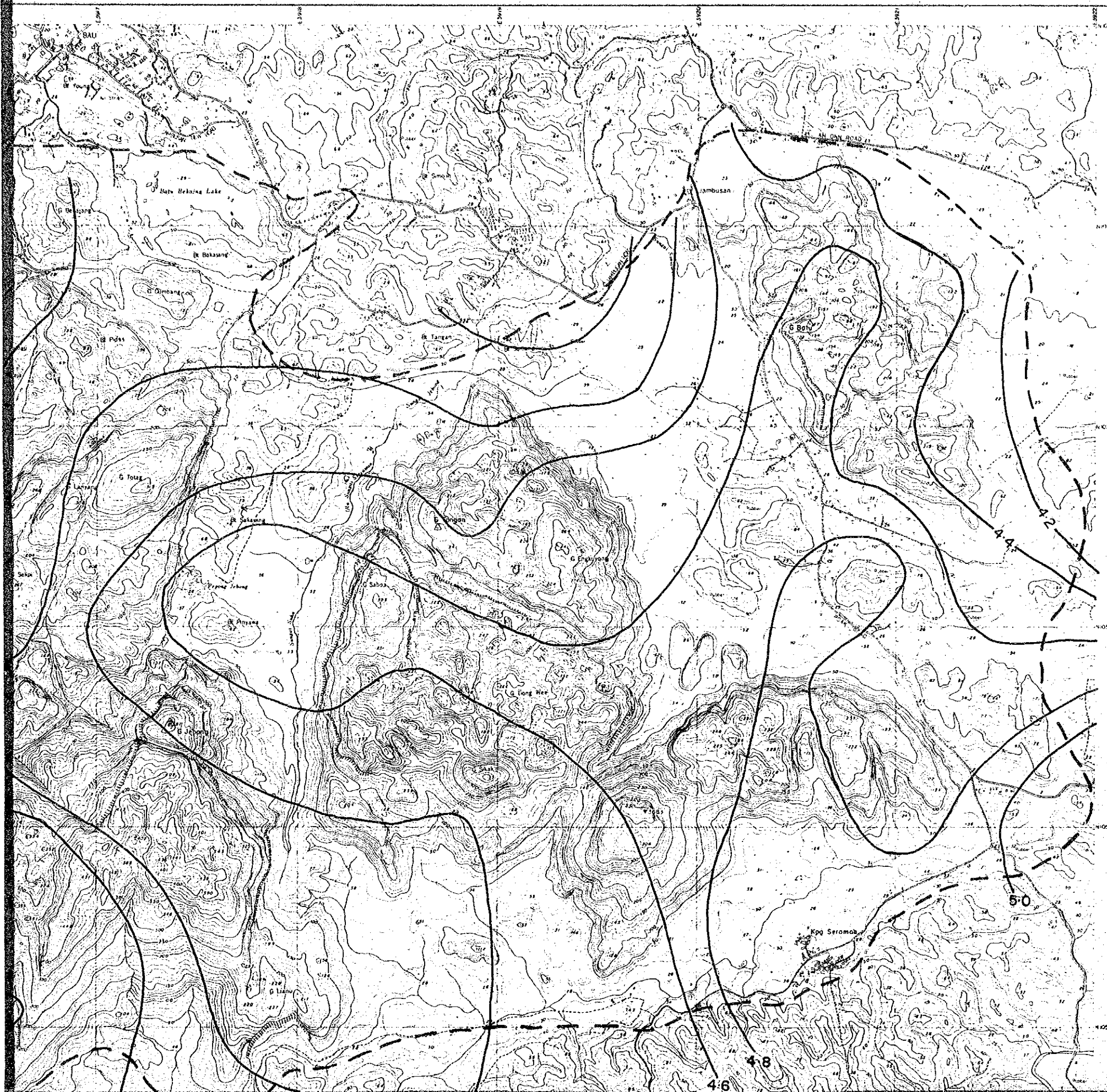
JAPAN INTERNATIONAL COOPERATION AGENCY
METAL MINING AGENCY OF JAPAN
GEOLOGICAL SURVEY OF MALAYSIA

MAP I-3 Ag TREND SURFACE MAP

国際協力事業団
10445
図書資料室蔵書
Map I-3



P I-3 Ag TREND SURFACE MAP



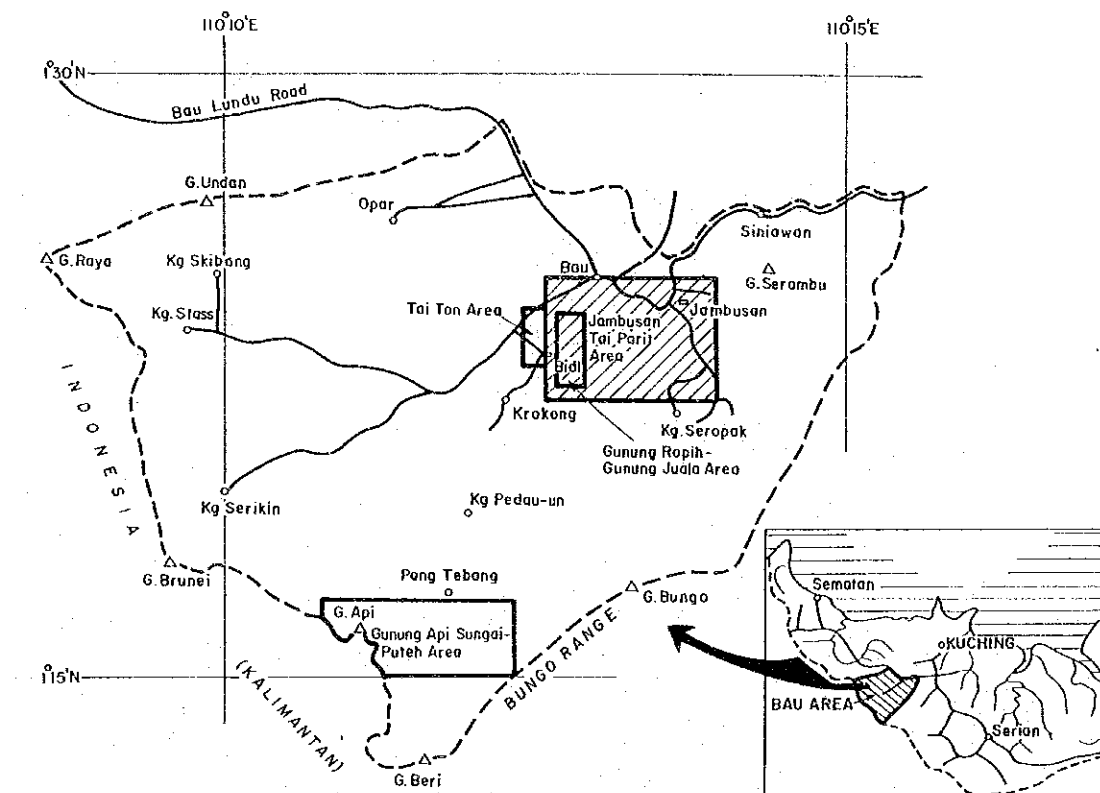
国際協力事業団

10445

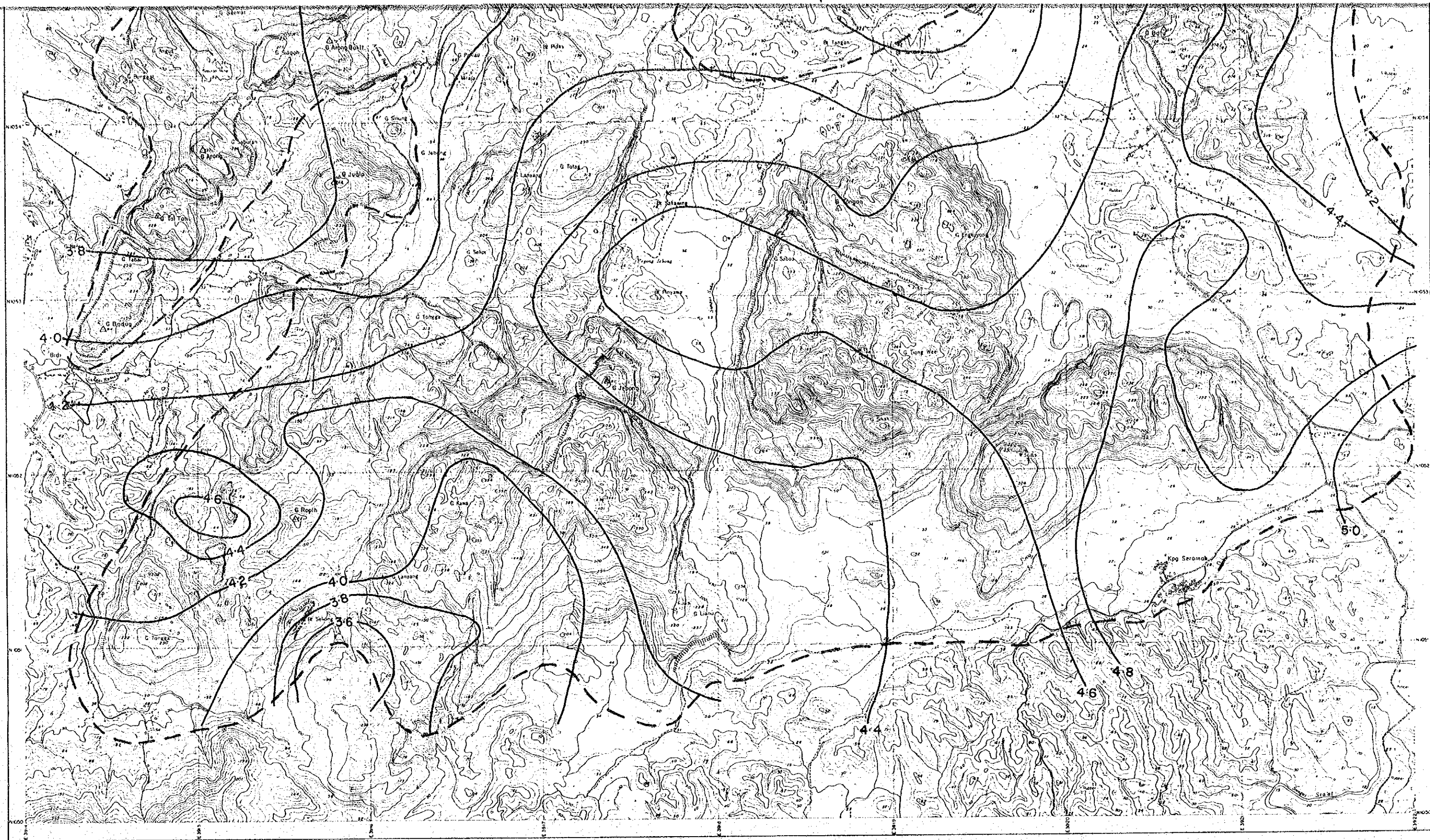
図書資料室蔵書

Map I-3

MINERAL EXPLORATION
BAU AREA
WEST SARAWAK, MALAYSIA
PHASE II
Ag Trend Surface Map,
Jambusan-Tai Parit Area

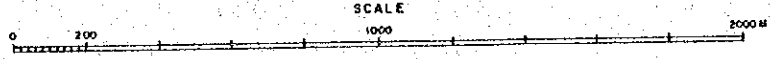


JAPAN INTERNATIONAL COOPERATION AGENCY
METAL MINING AGENCY OF JAPAN
GEOLOGICAL SURVEY OF MALAYSIA



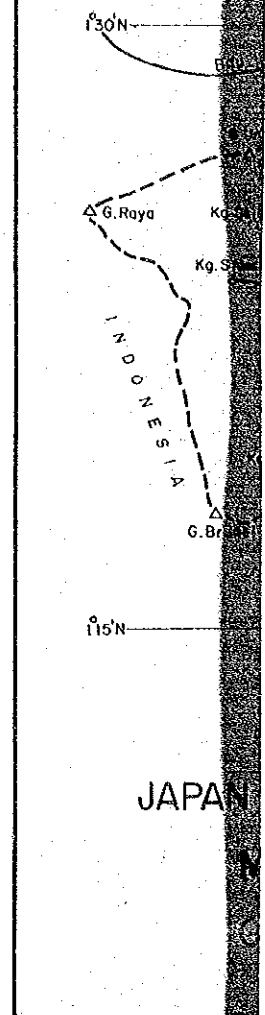
SM1337/1/84

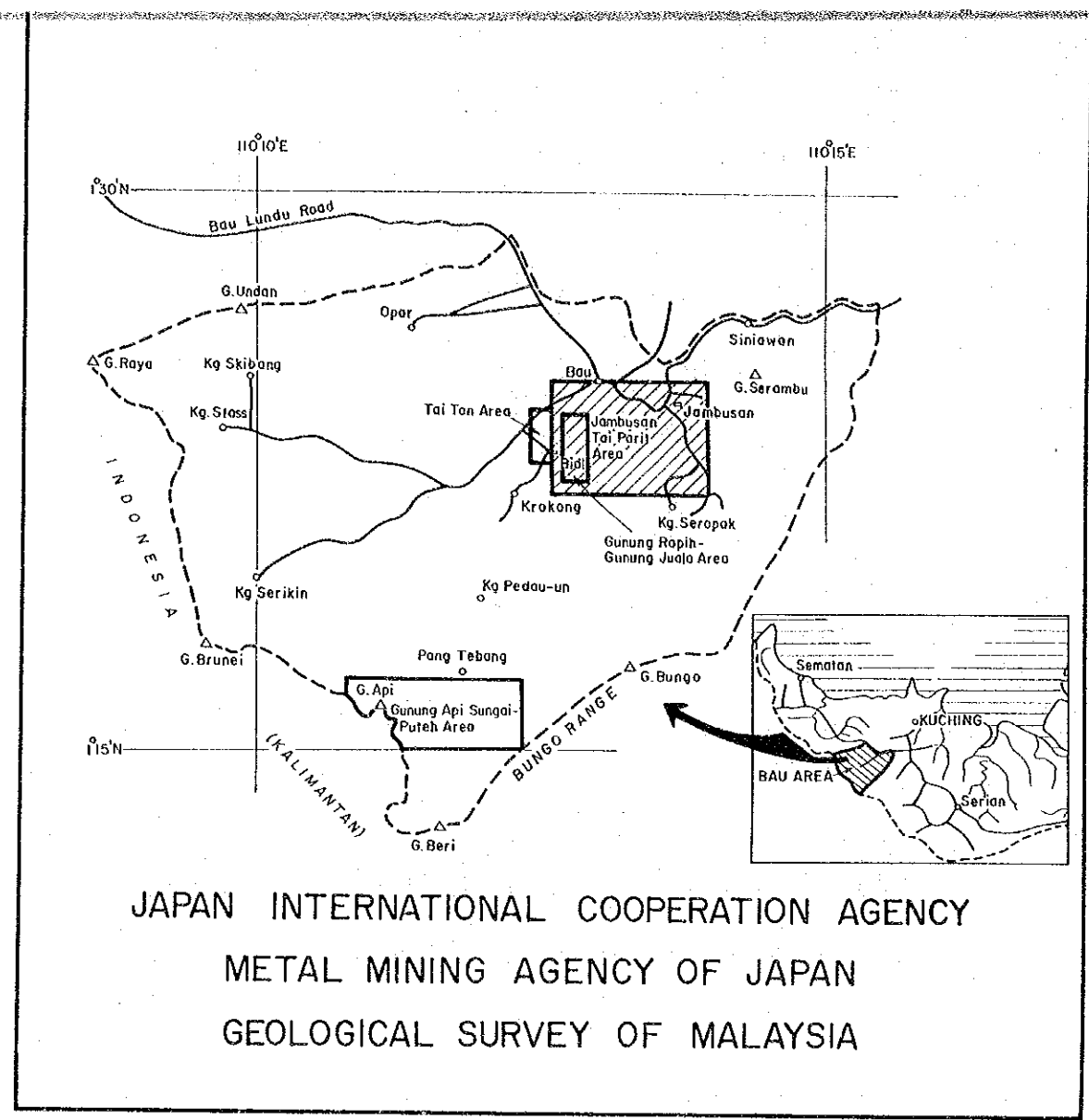
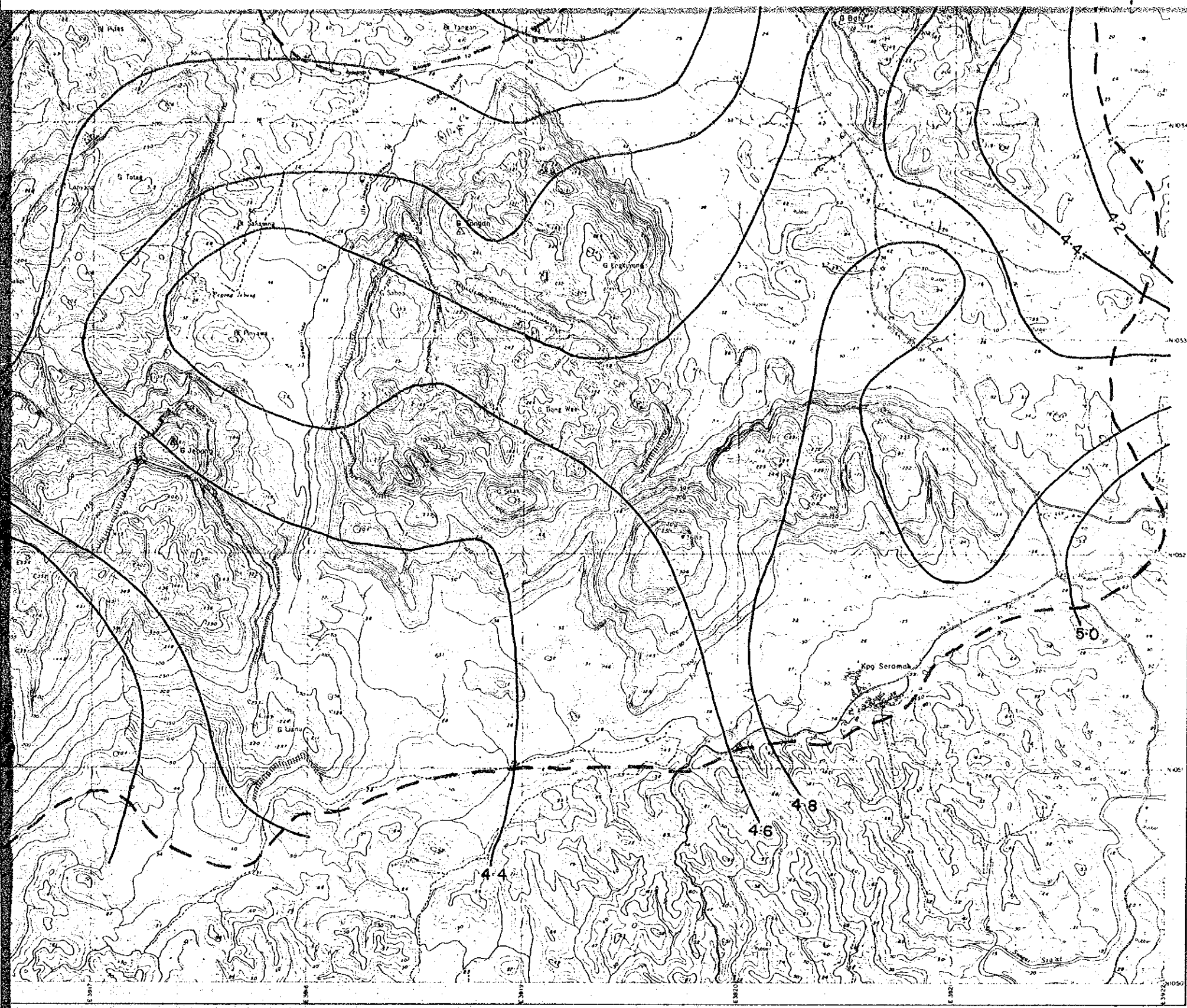
JAMBUSAN-TAI PARIT AREA



--- Approximate outer limit of sampling coverage

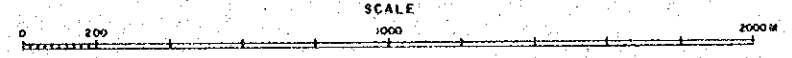
Contour interval = 0.2 ppm





JAPAN INTERNATIONAL COOPERATION AGENCY
 METAL MINING AGENCY OF JAPAN
 GEOLOGICAL SURVEY OF MALAYSIA

JAMBUSAN-TAI PARIT AREA



--- Approximate outer limit of sampling coverage

Contour interval = 0.2 ppm