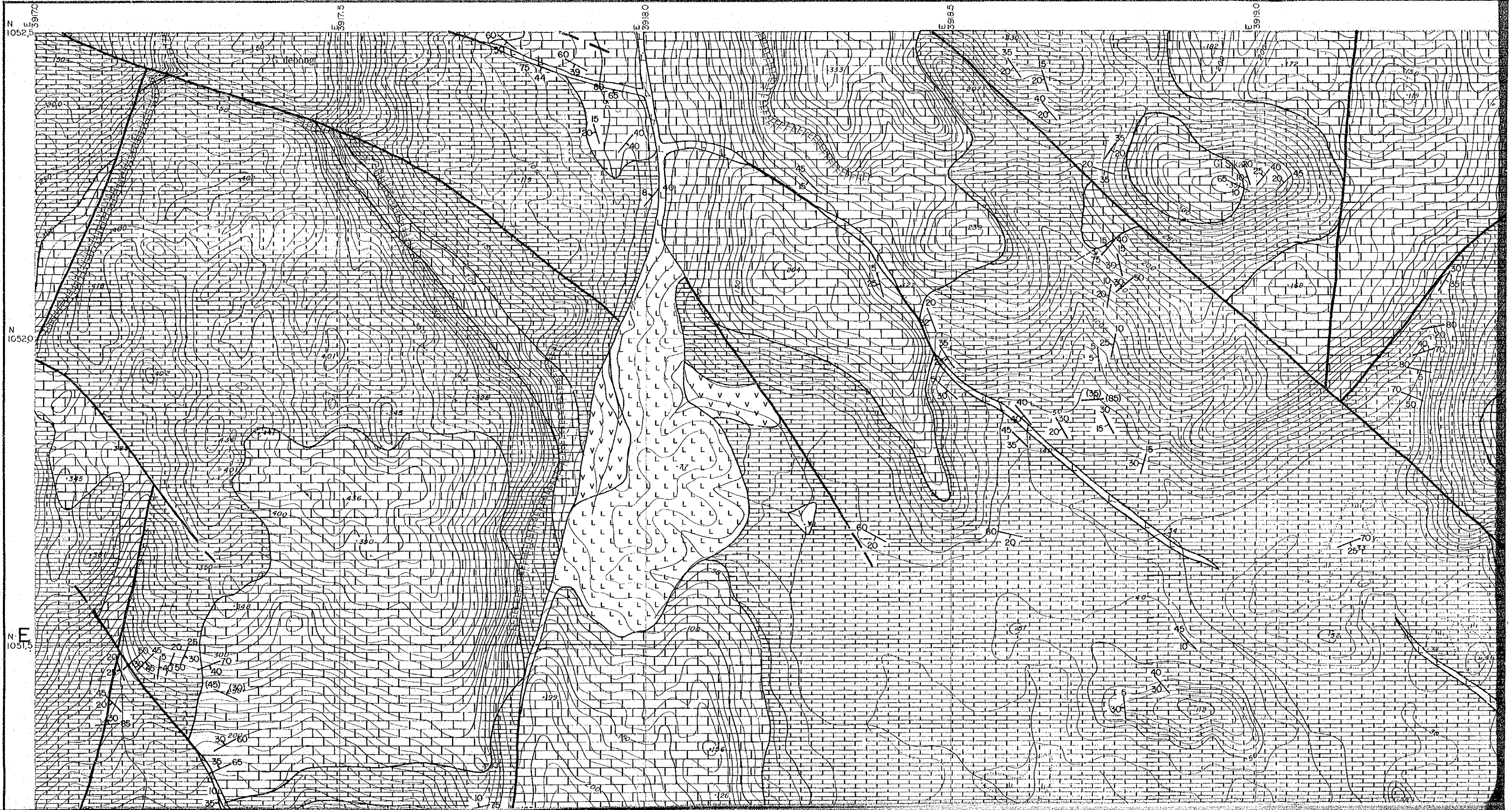
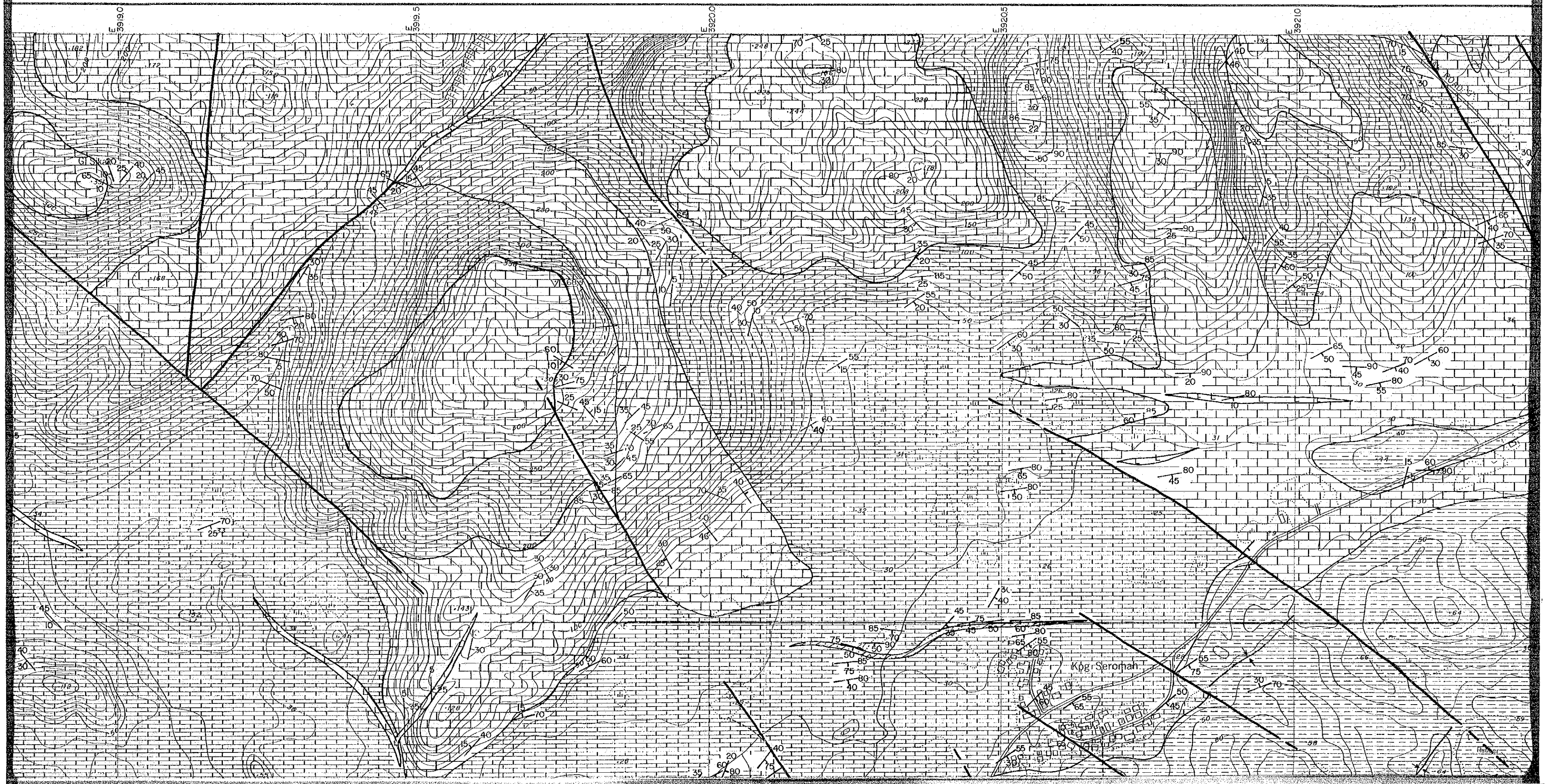


# MAP I-I GEOLOGICAL MAP OF JAMBUSAN-TAI PARIT AREA,BAU 4-4



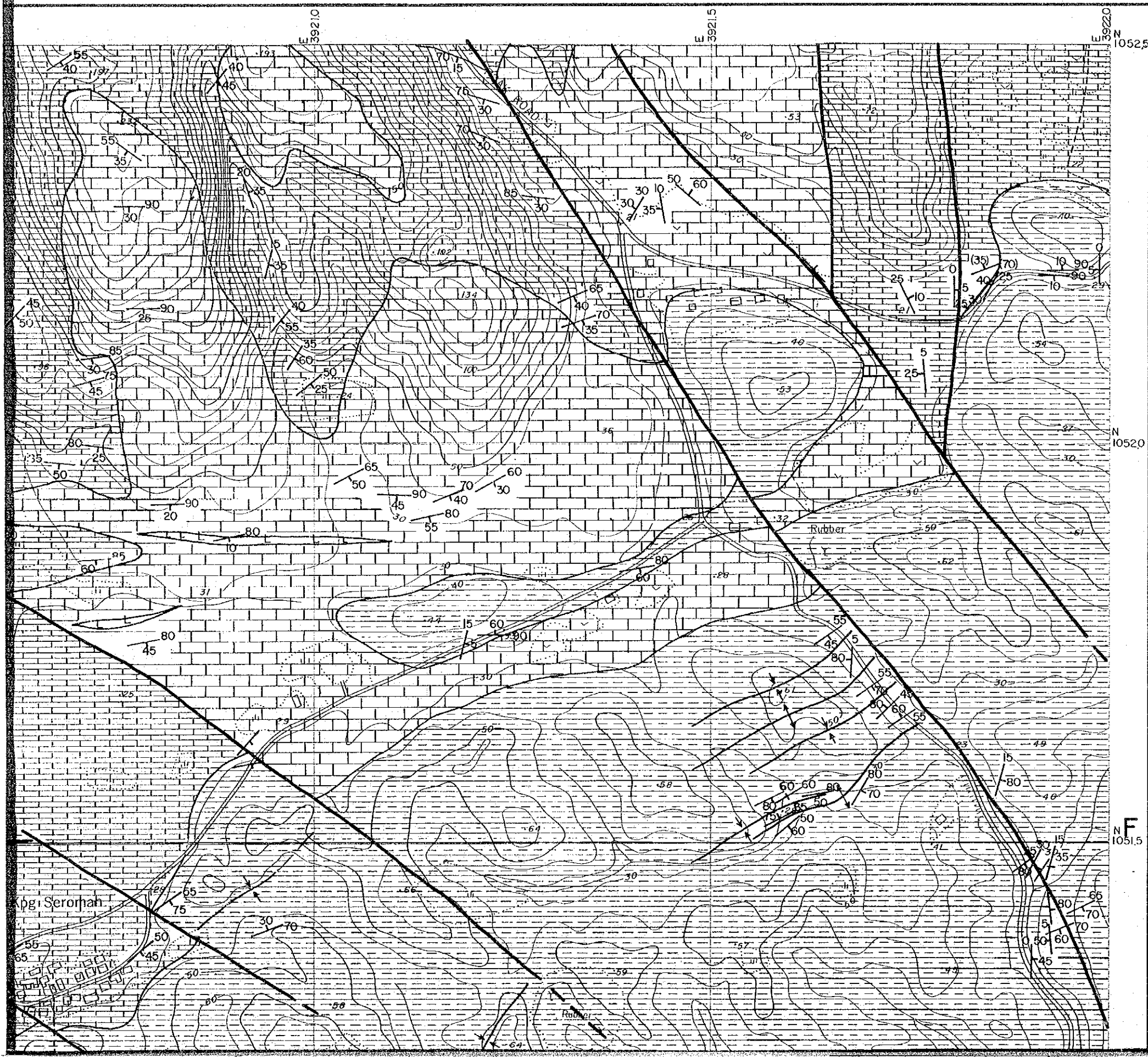


国際協力事業団

10445

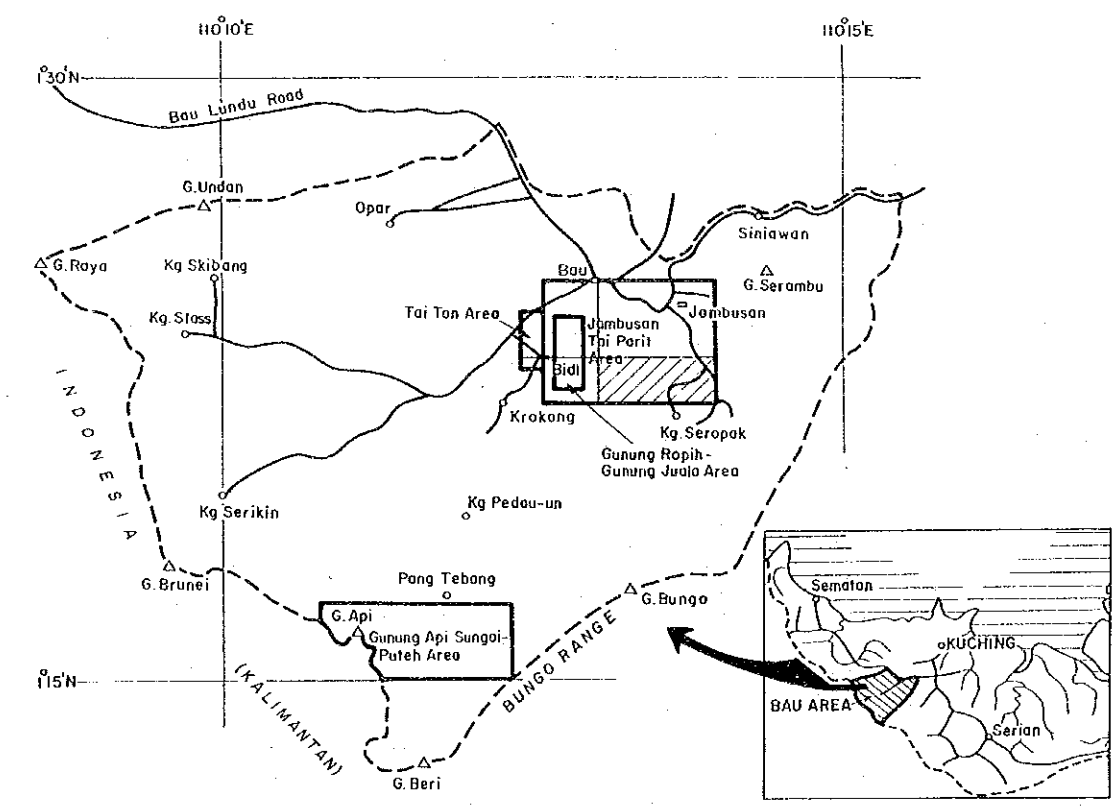
図書資料室蔵書

Map I-1(4)

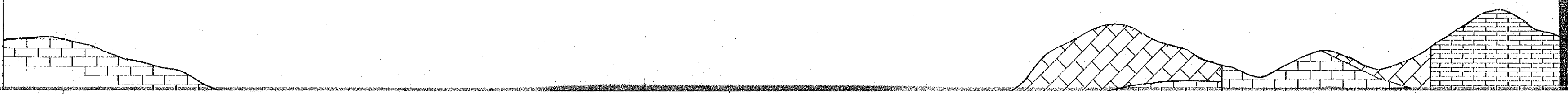


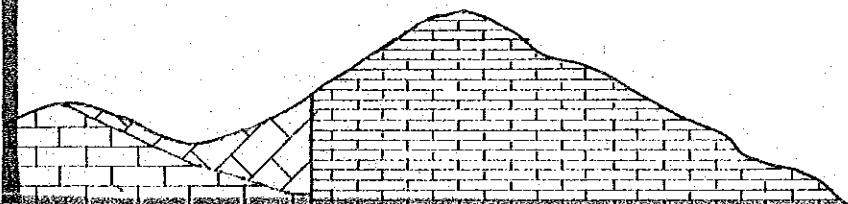
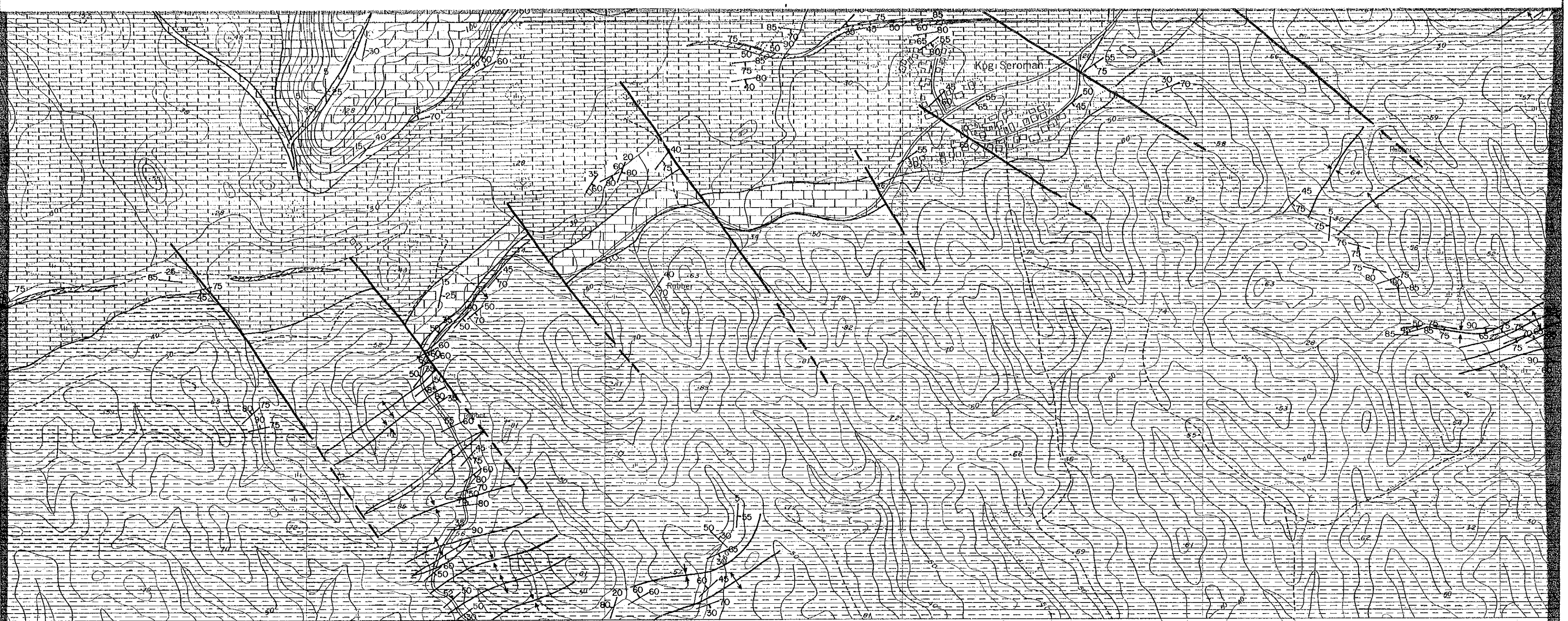
MINERAL EXPLORATION  
 BAU AREA  
 WEST SARAWAK, MALAYSIA  
 PHASE II

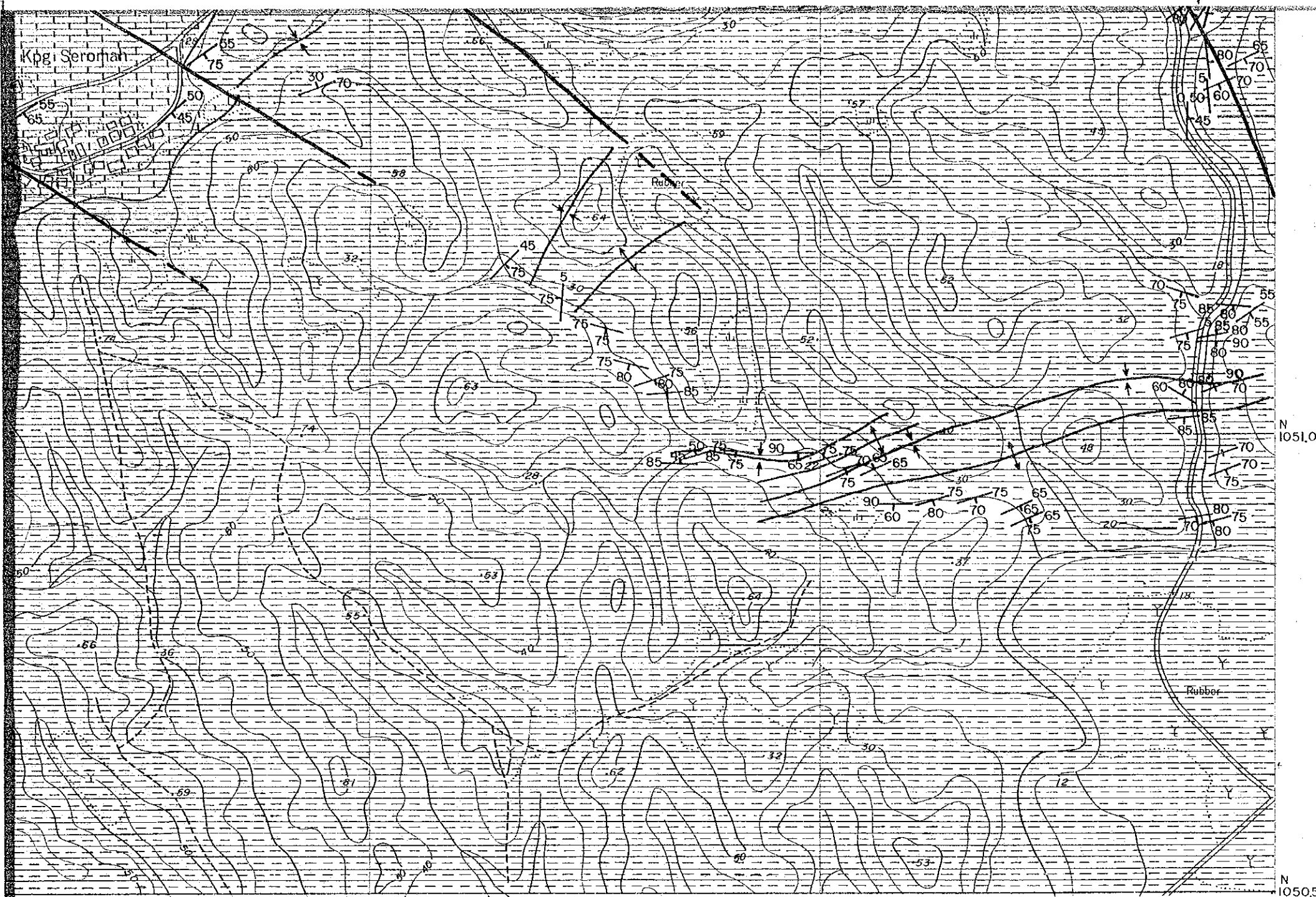
Geological Map of  
 Jambusan-Tai Parit Area (4)

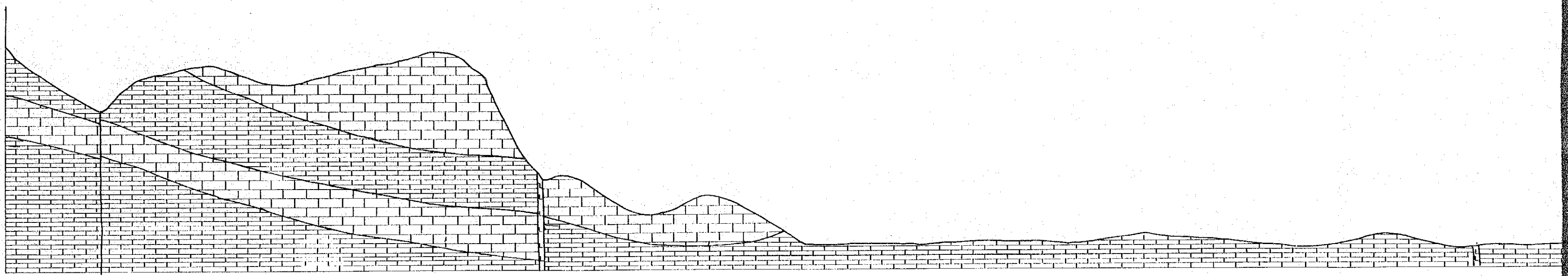
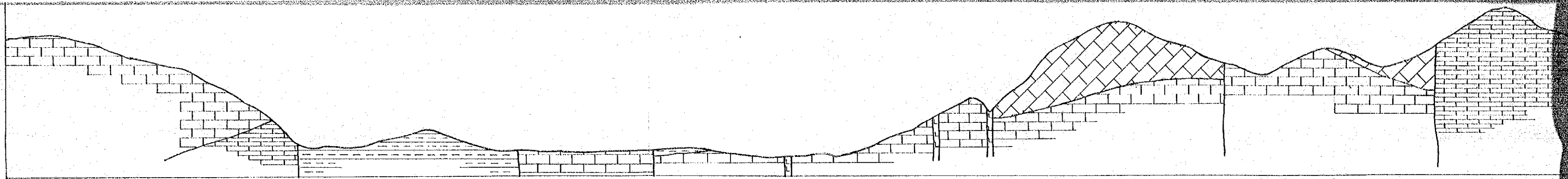


JAPAN INTERNATIONAL COOPERATION AGENCY  
 METAL MINING AGENCY OF JAPAN  
 GEOLOGICAL SURVEY OF MALAYSIA







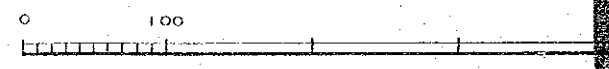
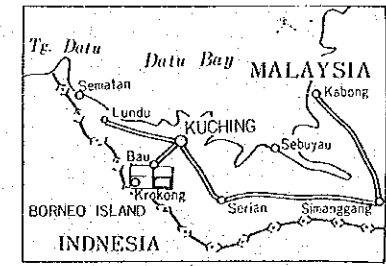


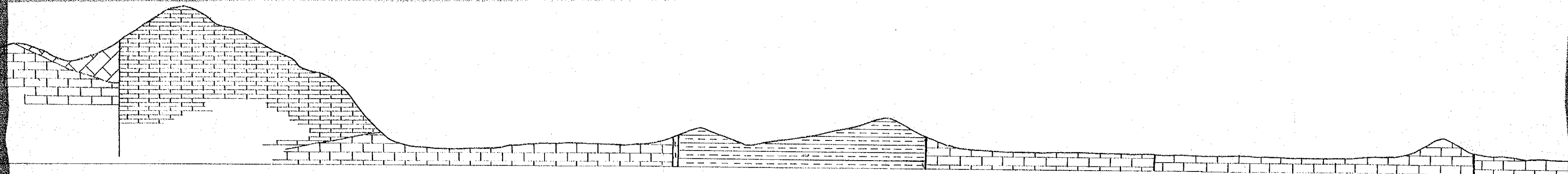
SP 2781/1/84

INDEX

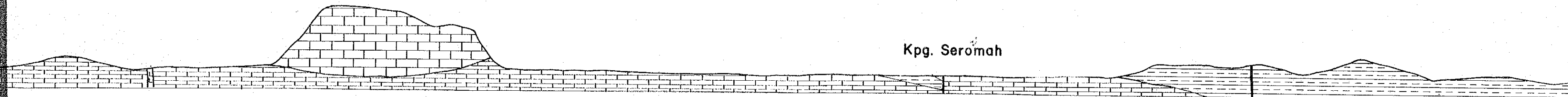
4-1	4-2
4-3	4-4

LOCATION



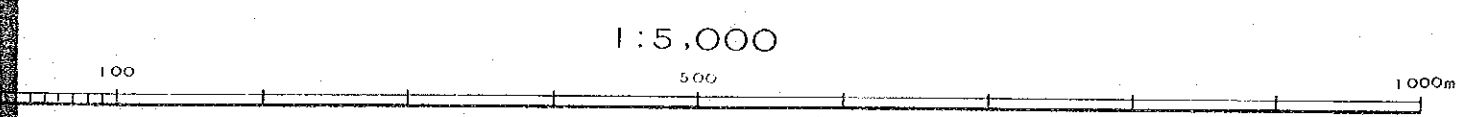


SECTION B - C



Kpg. Seromah

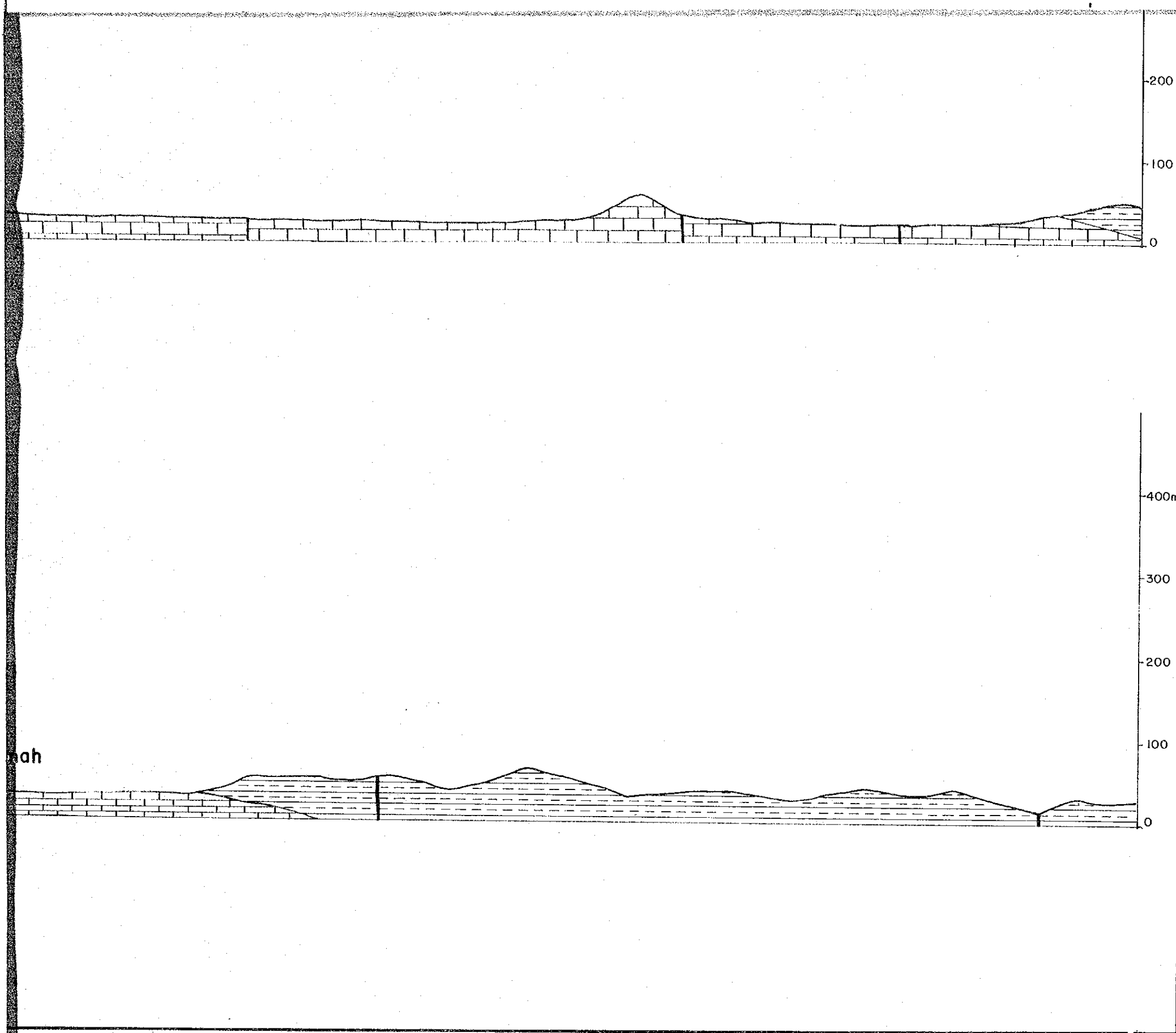
SECTION E - F



1:5,000

METAL MINING  
PREPARED BY D





METAL MINING AGENCY OF JAPAN  
PREPARED BY DAIDOKOSOKU

4-4