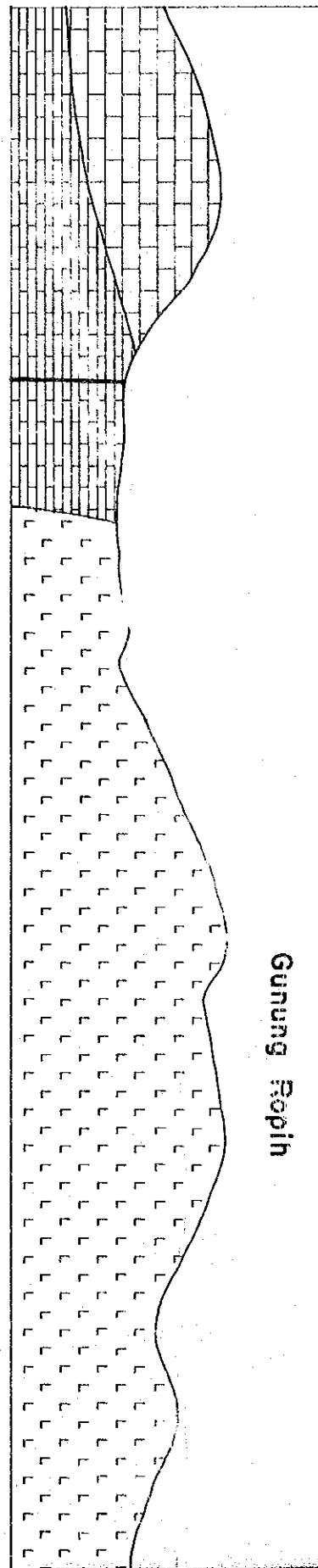
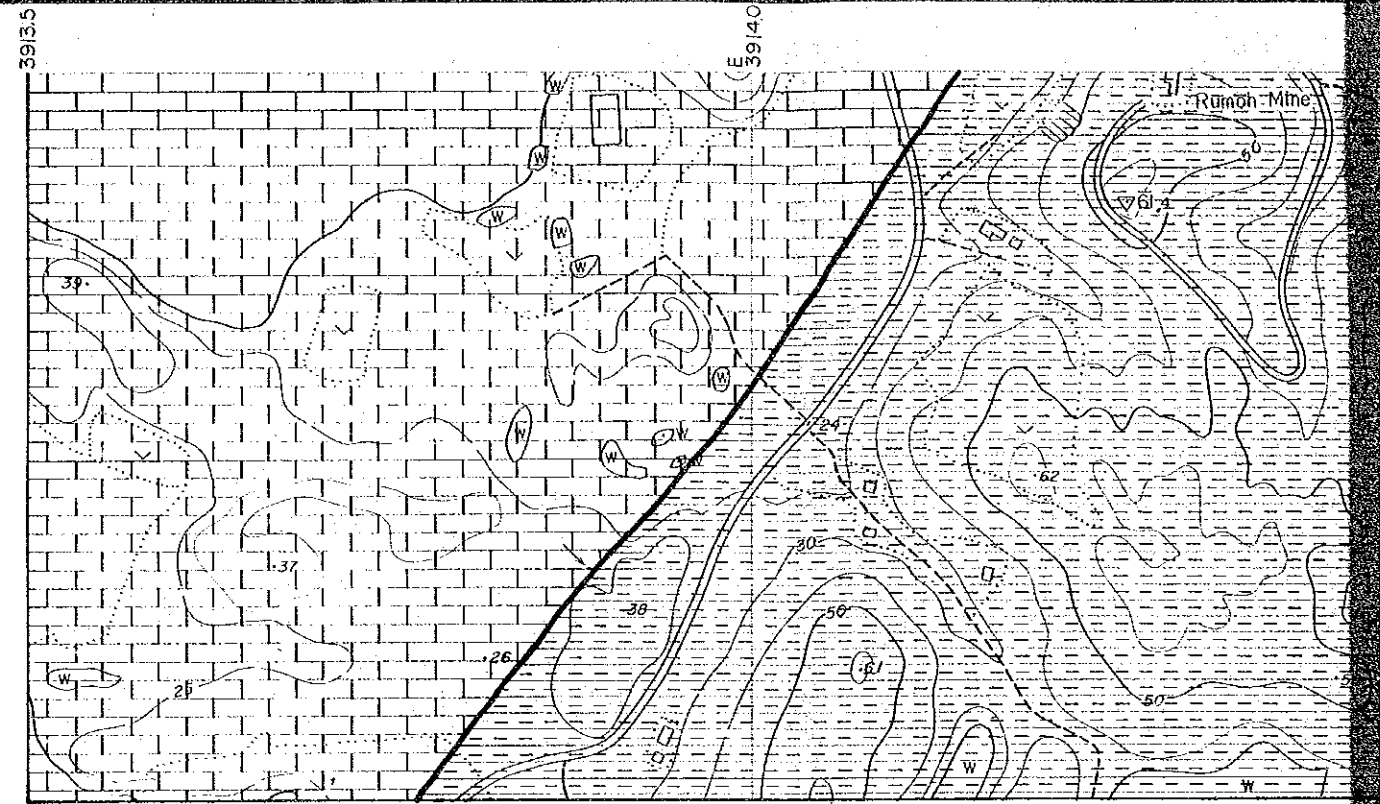


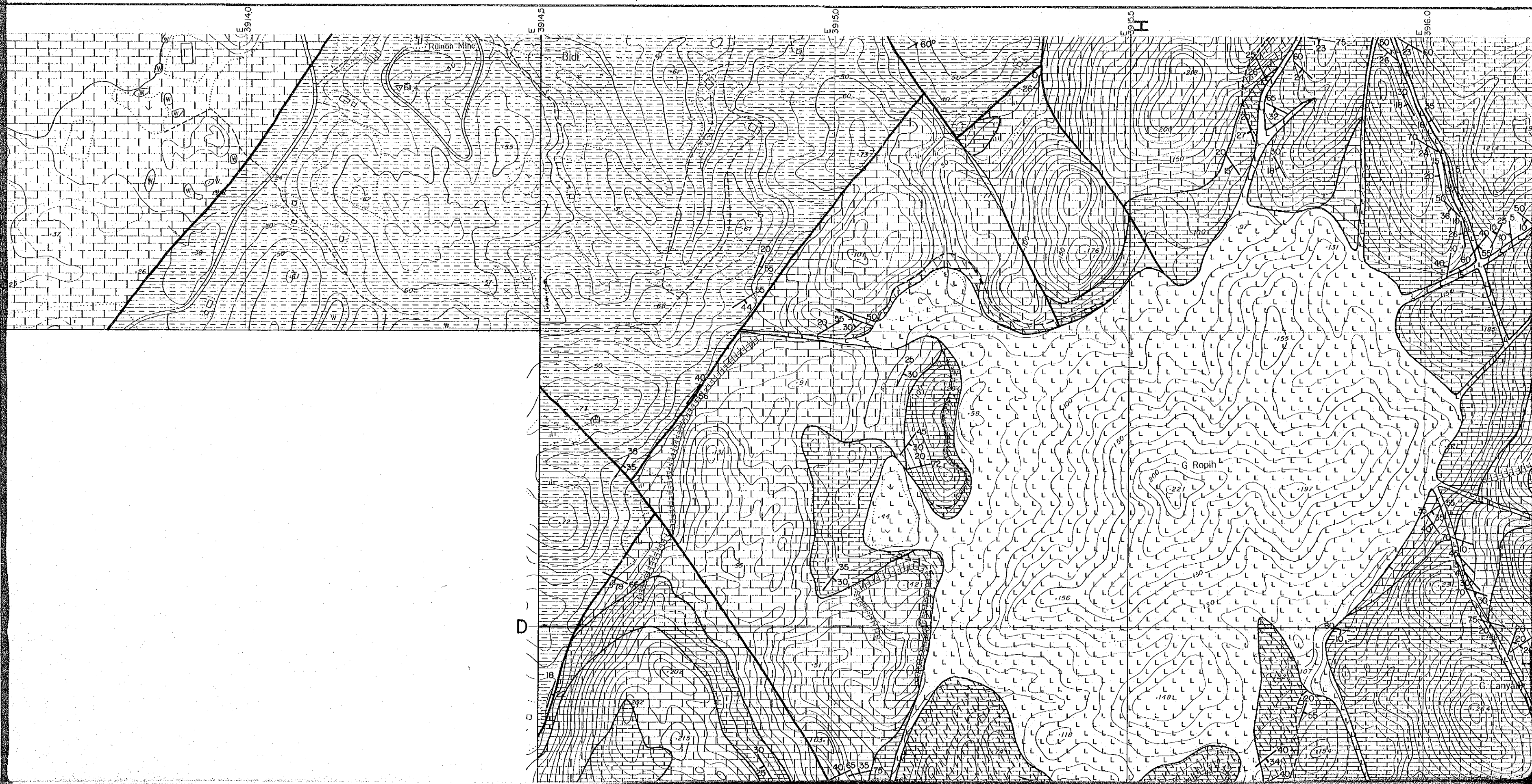
MAP I-1 GEOLOGICAL MAP OF
JAMBUSAN-TAI PARIT AREA,BAU 4-3



SECTION H-1

Gunung Ropih





国際協力事業団

10445

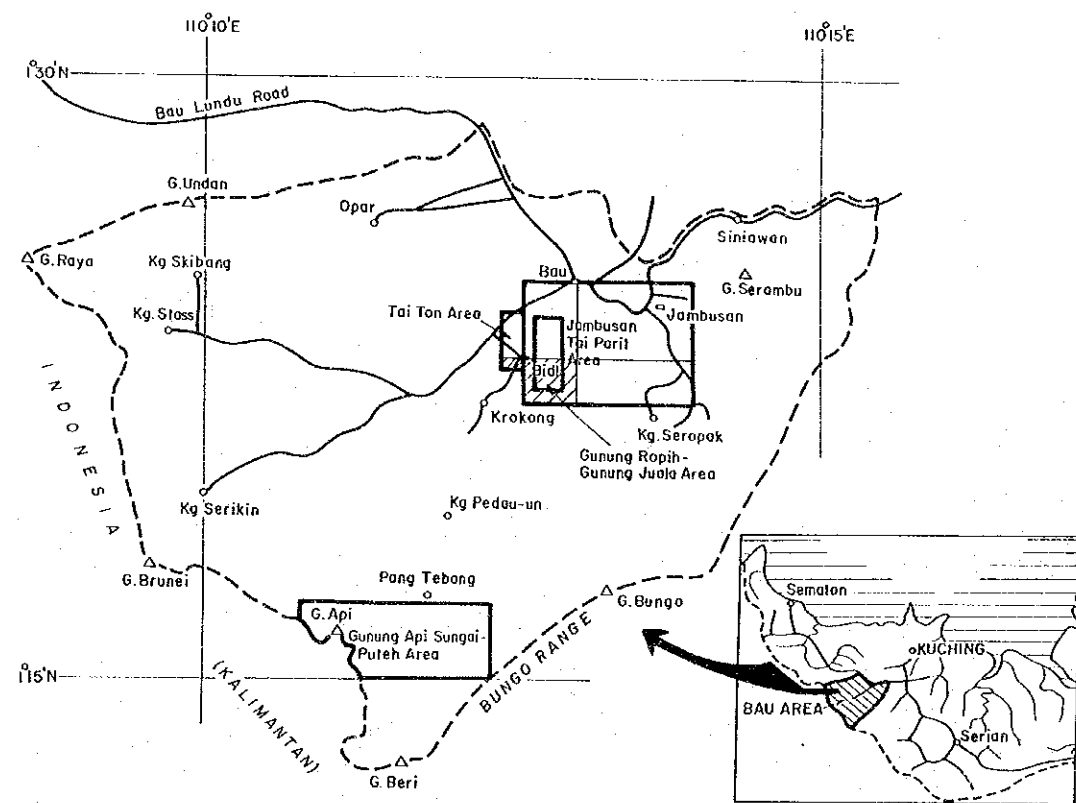
圖書資料室蔵書

Map I-1(3)

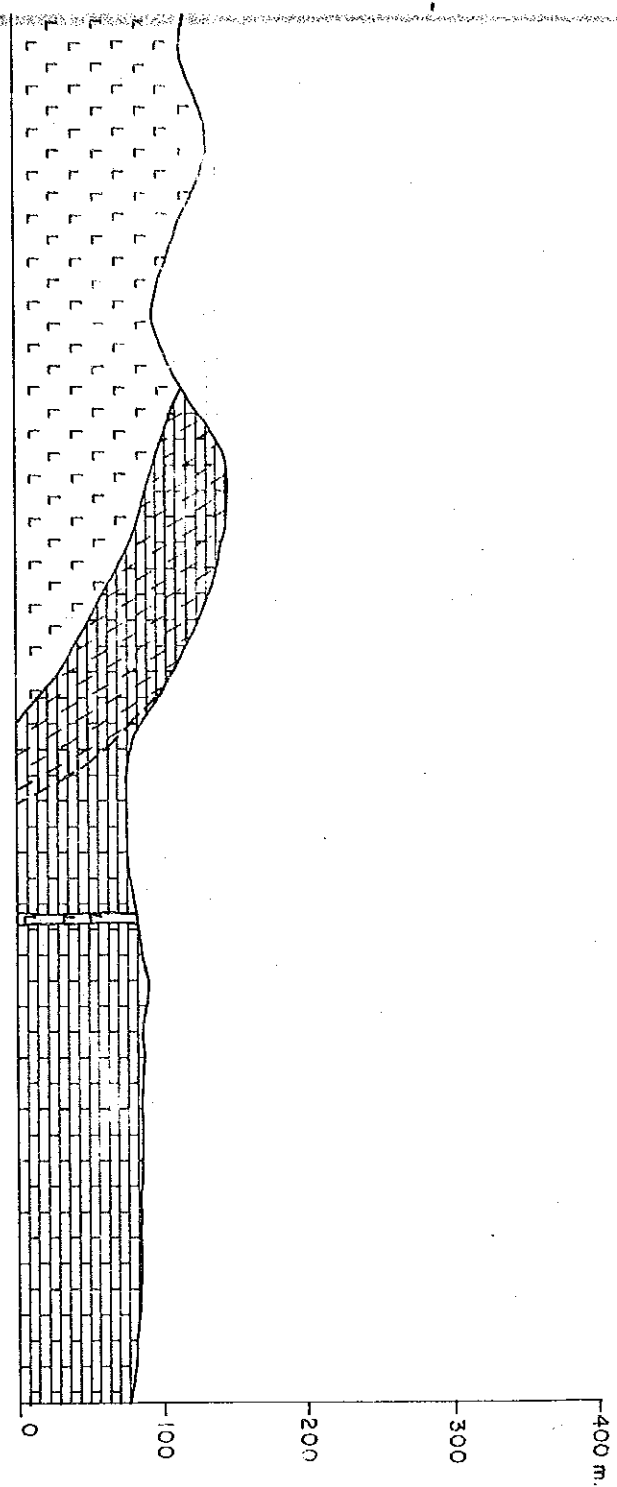


MINERAL EXPLORATION
 BAU AREA
 WEST SARAWAK, MALAYSIA
 PHASE II

Geological Map of
 Jambusan-Tai Parit Area (3)

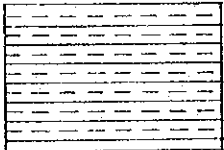
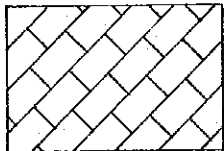


JAPAN INTERNATIONAL COOPERATION AGENCY
 METAL MINING AGENCY OF JAPAN
 GEOLOGICAL SURVEY OF MALAYSIA

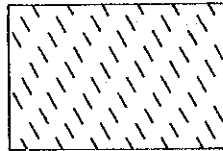
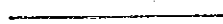
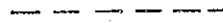


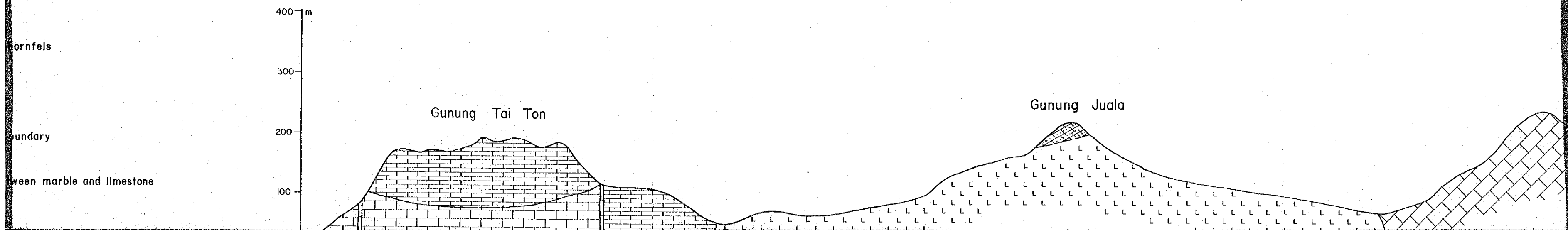
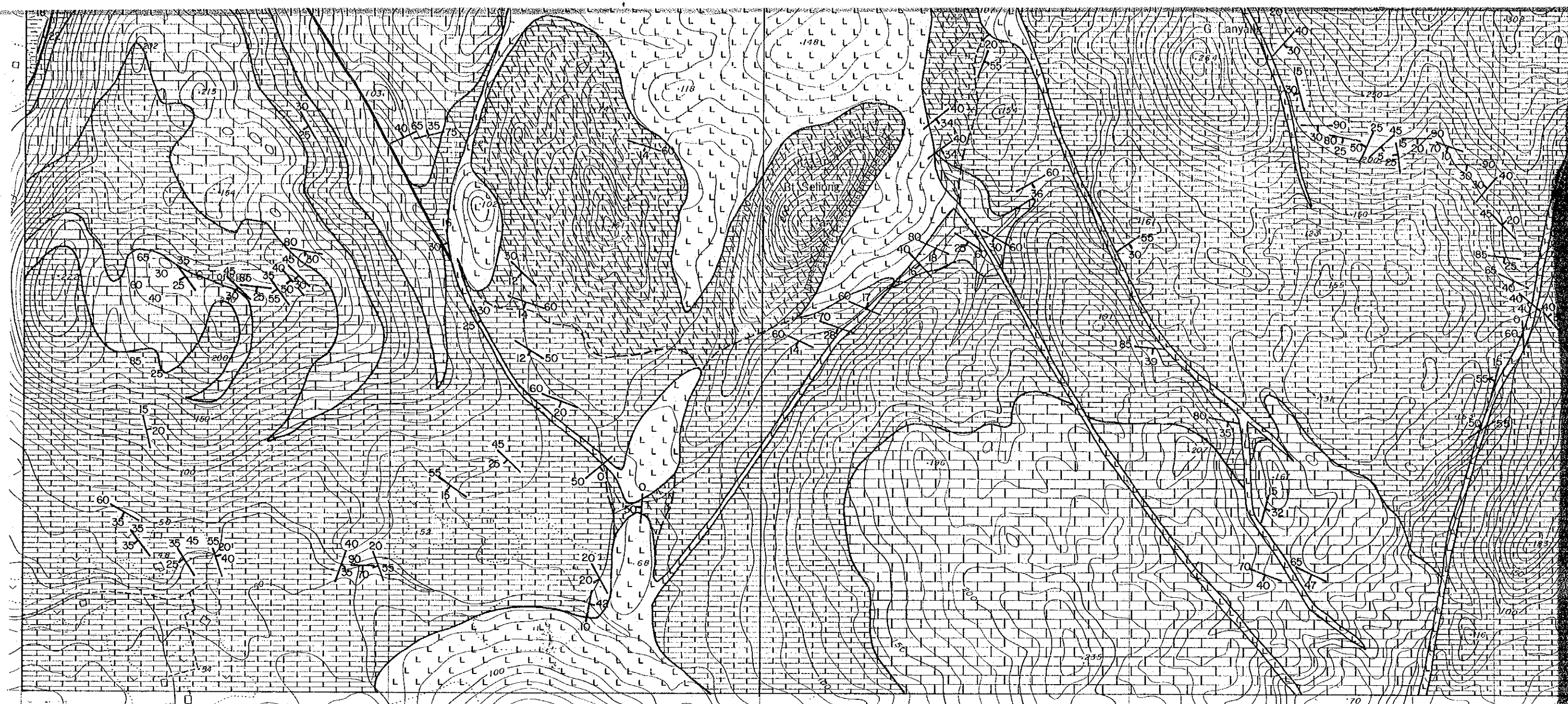
LEGEND

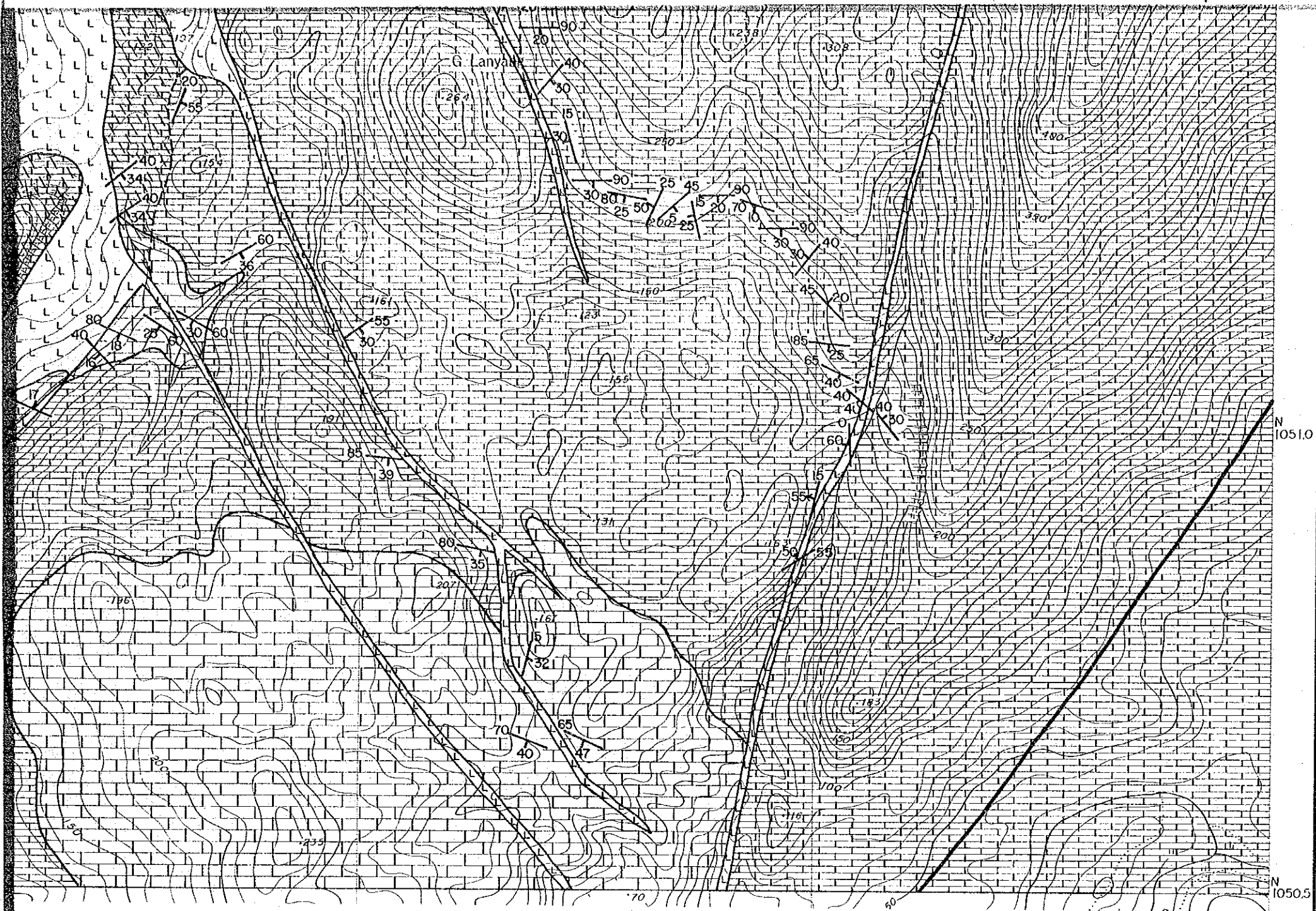
(Sedimentary and Volcanic rocks)

Cretaceous		Pedawan Formation Alternation of shale / mudstone and siltstone / sandstone
		Limestone III Light grey ~ white limestone

(Metamorphosed rocks)

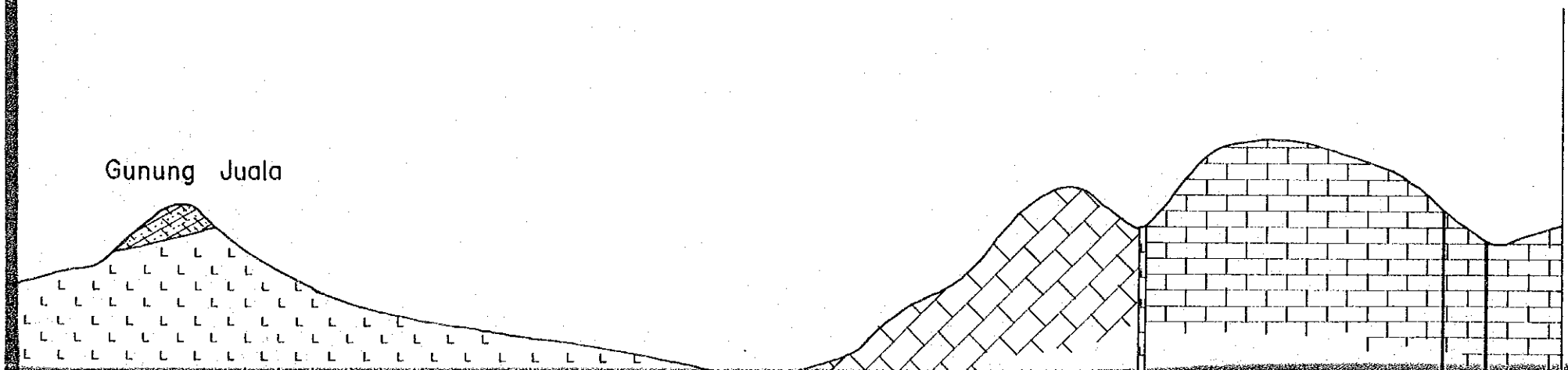
- 
 Marble and hornfels
- 
 Geological boundary
- 
 Boundary between marble and limestone

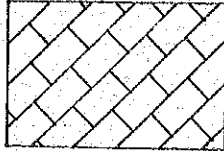


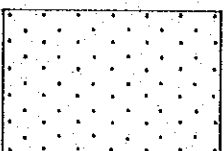




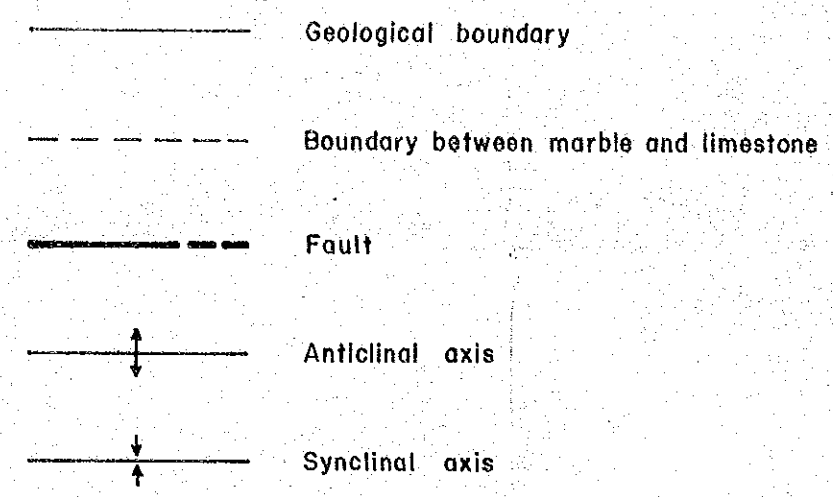


N 1051.0
N 1050.5

Gunung Juala



Upper Jurassic — Cretaceous	Bau Limestone		Limestone III Light grey ~ white limestone
			Limestone II Grey limestone
			Limestone I Dark grey ~ black limestone including muddy limestone. (a) Shale, siltstone and sandstone interbeds.
			III - sorted sandstone
Triassic	Serian Volcanics		Basic andesite ~ Basalt
(Intrusives)			
Neogene Tertiary	Acidic Intrusives		Stock and dyke Quartz porphyry ~ dacite

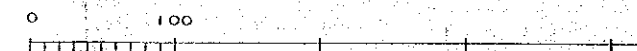
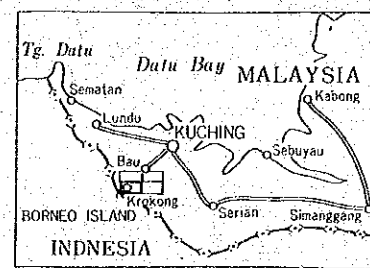


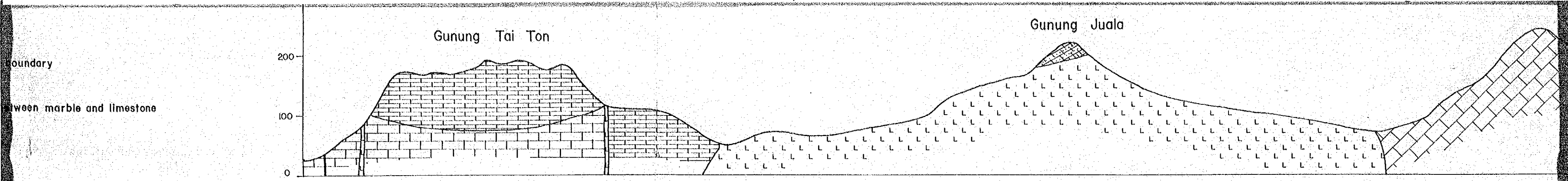
SP 2780/1/84

INDEX

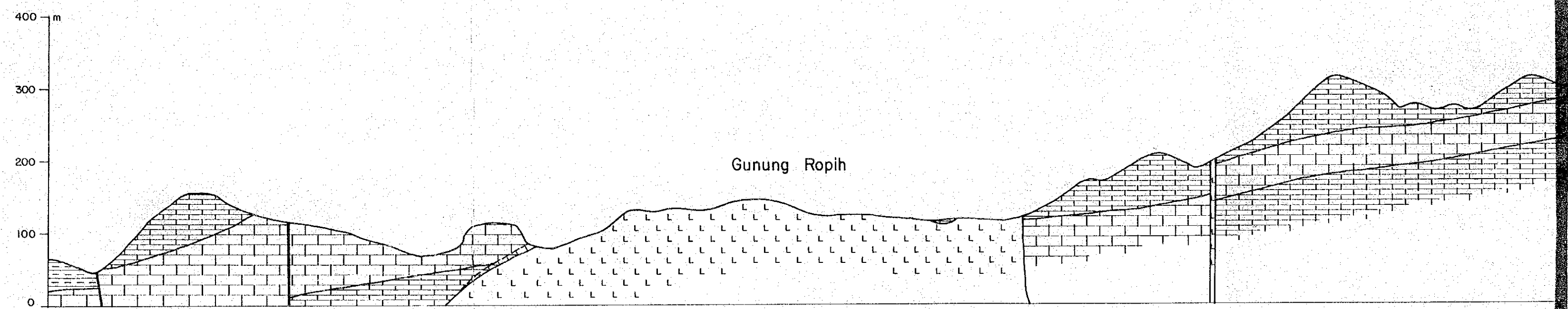
4-1	4-2
4-3	4-4

LOCATION

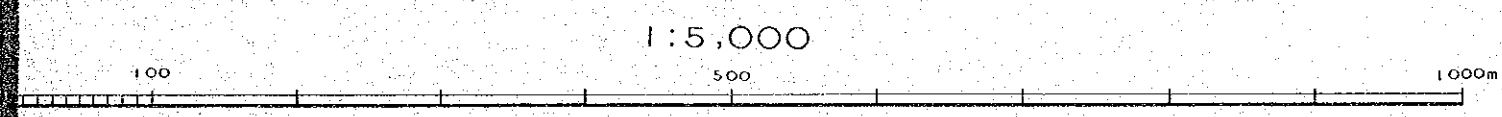




SECTION A-B

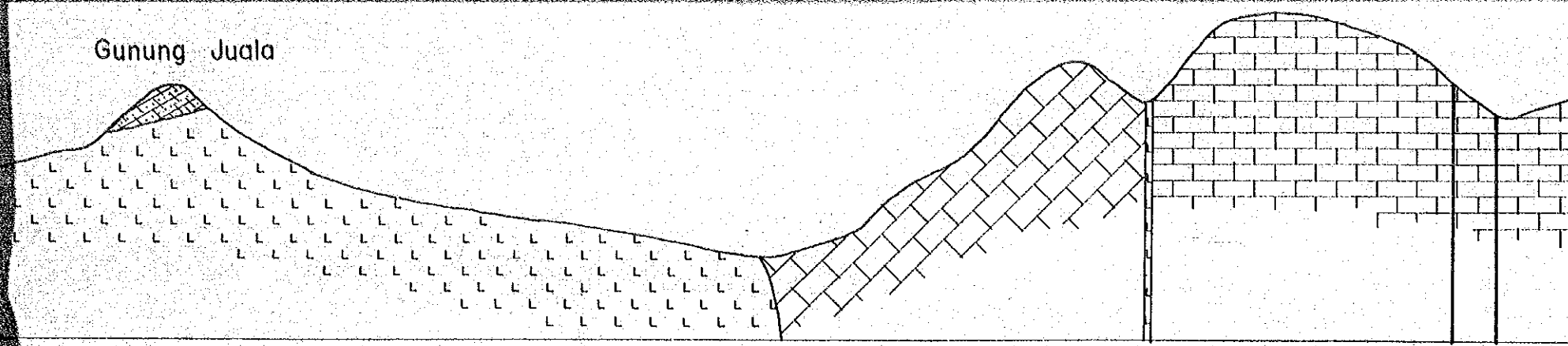


SECTION D-E

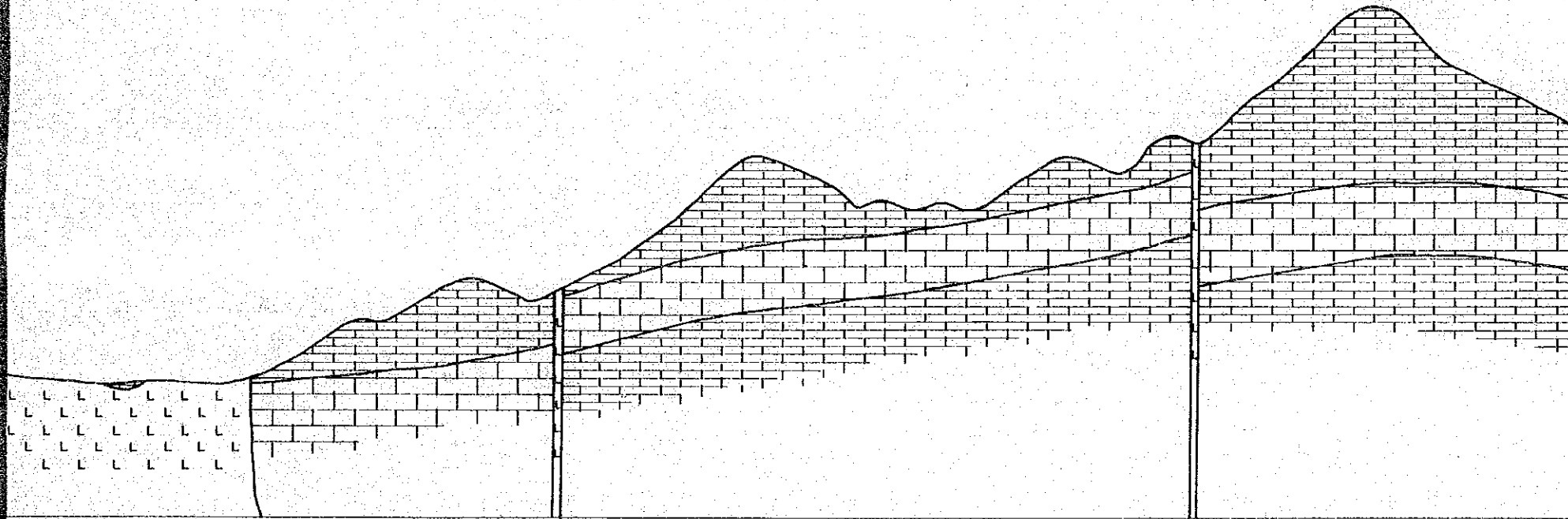


METAL MINING
PREPARED BY

Gunung Juala



SECTION A - B



SECTION D - E