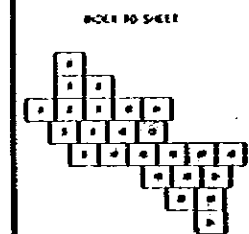
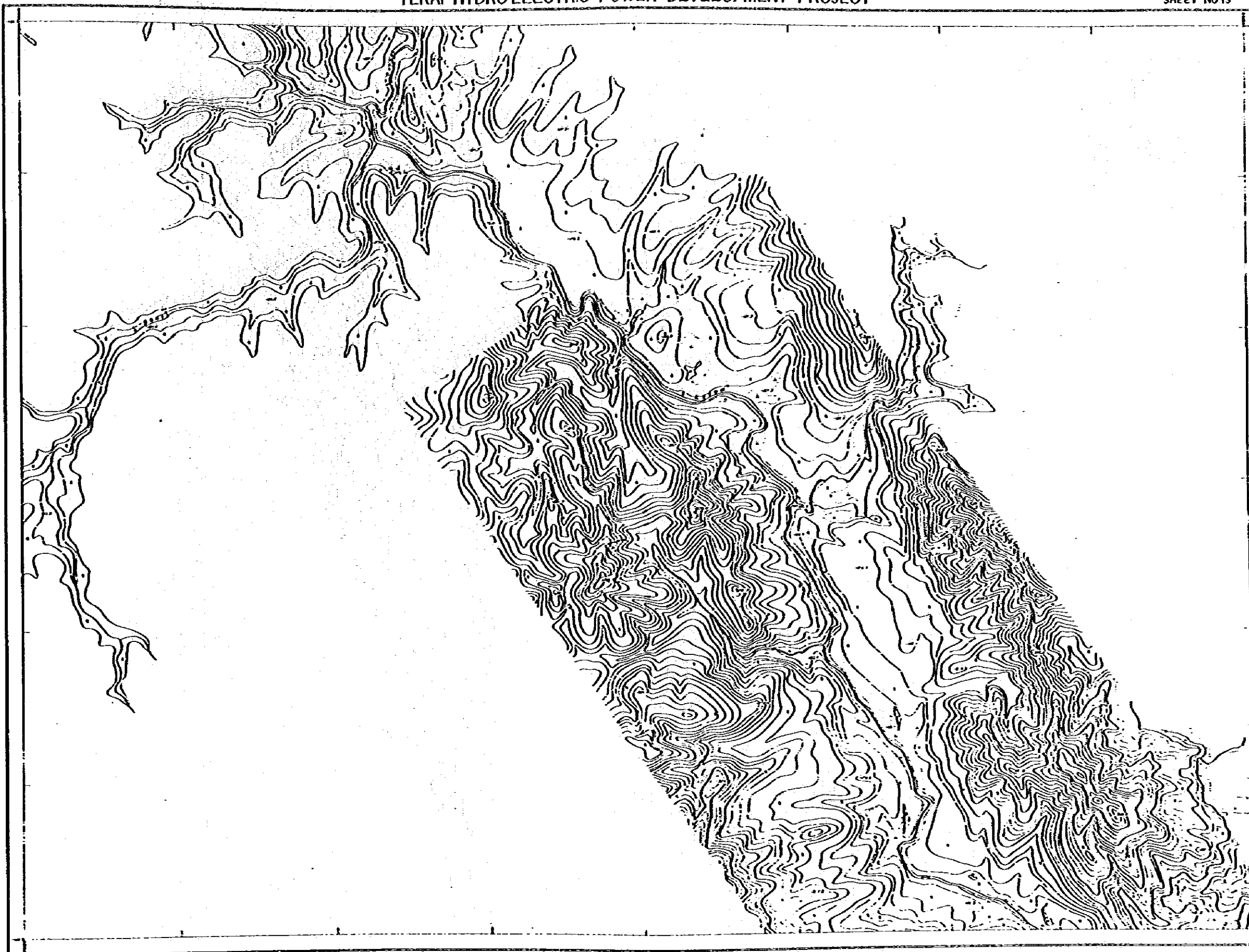


TEKAI HYDRO-ELECTRIC POWER DEVELOPMENT PROJECT

SHEET NO 13



Magnetic Declination 1.84

PROJECTION
 Modified Universal Transverse Mercator
 Spheroid - Everest

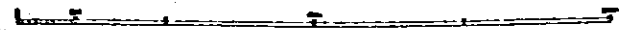
GRID
 Modified Universal Transverse
 Origin - 4° 48' 00" E. of Greenwich
 Coordinate of Origin - 472 504 Meters E.
 642 426 Meters N.

- Highway Road
- Dist. to Top Bank
- Feature
- Water Dip
- Foot Bridge
- Run
- Gravel Creek Runoff (M.S.)
- Soil Ridge
- Non-Constant
- Contours
- Submerged Contour
- Drainage
- Enclosure
- Contour
- Dr
- Contour
- Bank Slope
- Boundary
- Post and Line
- Spot
- Grassy Spot
- Line of Vegetation
- Spot
- Water
- Long and in Scale Ground
- Drain
- Dr. Pan
- Dr. Pan
- Dr. Pan
- Dr. Pan

- Background No. 0
- Overplotted 0
- Final Name 0
- Spot Number 0
- Spot No. 0

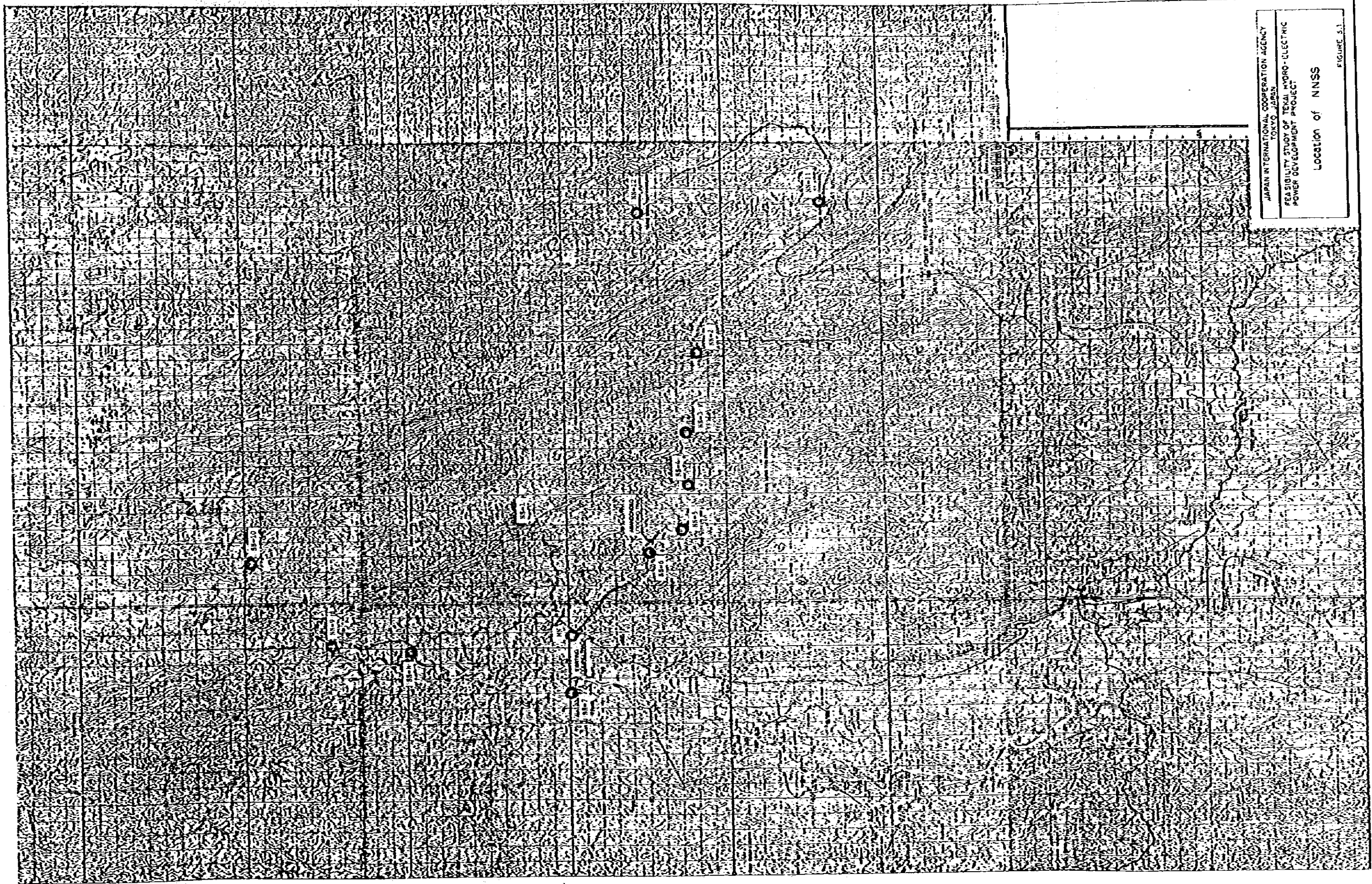
SHEET HISTORY
 Prepared by A.M.S. INTERNATIONAL CORPORATION AS-HOUSA
 First Publication by the Ministry of Survey and Mapping
 Second Edition by A.M.S. INTERNATIONAL CORPORATION AS-HOUSA

Scale 1:10,000

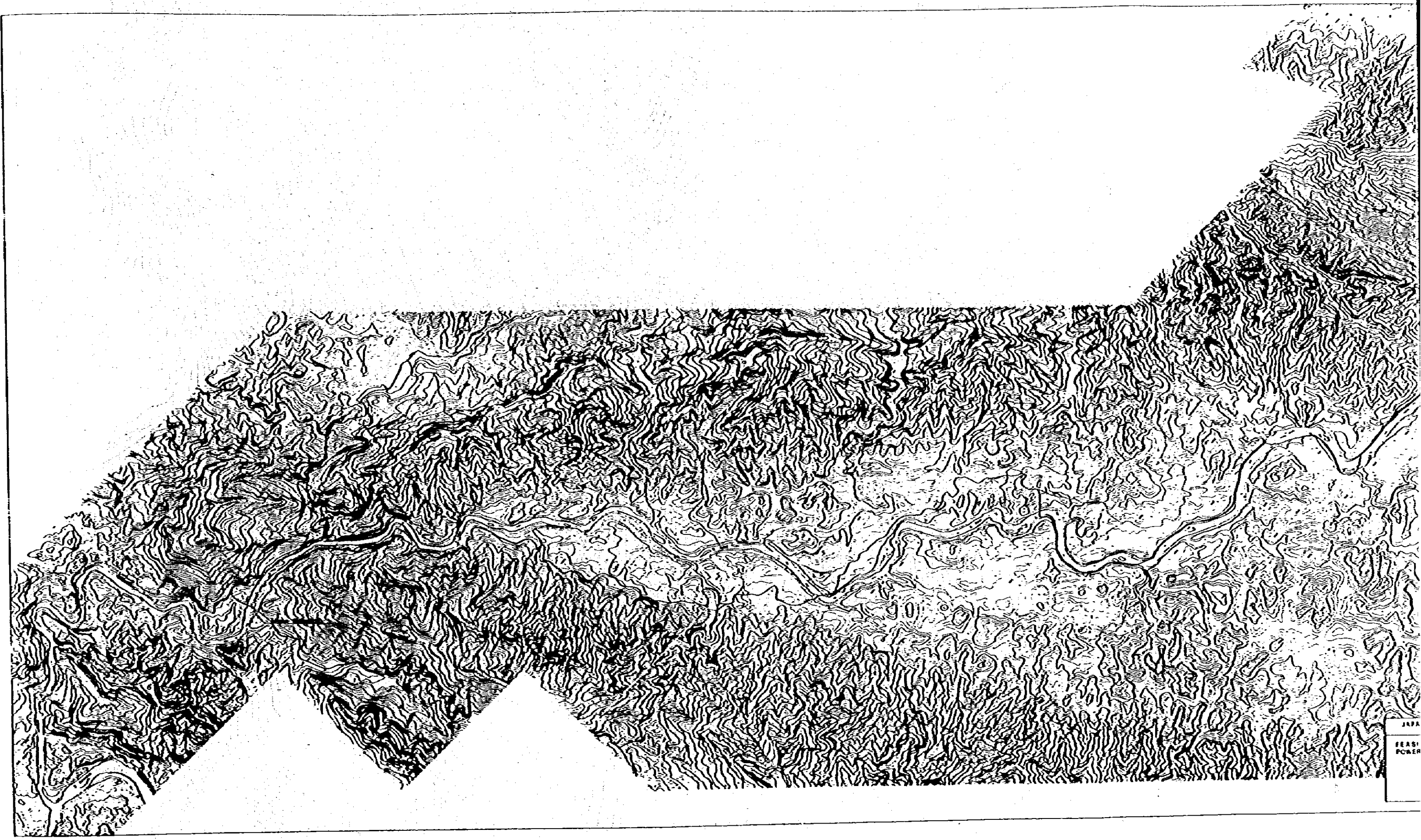


Height of Spot shown above Sea Level
 Contour Interval 5 Meters

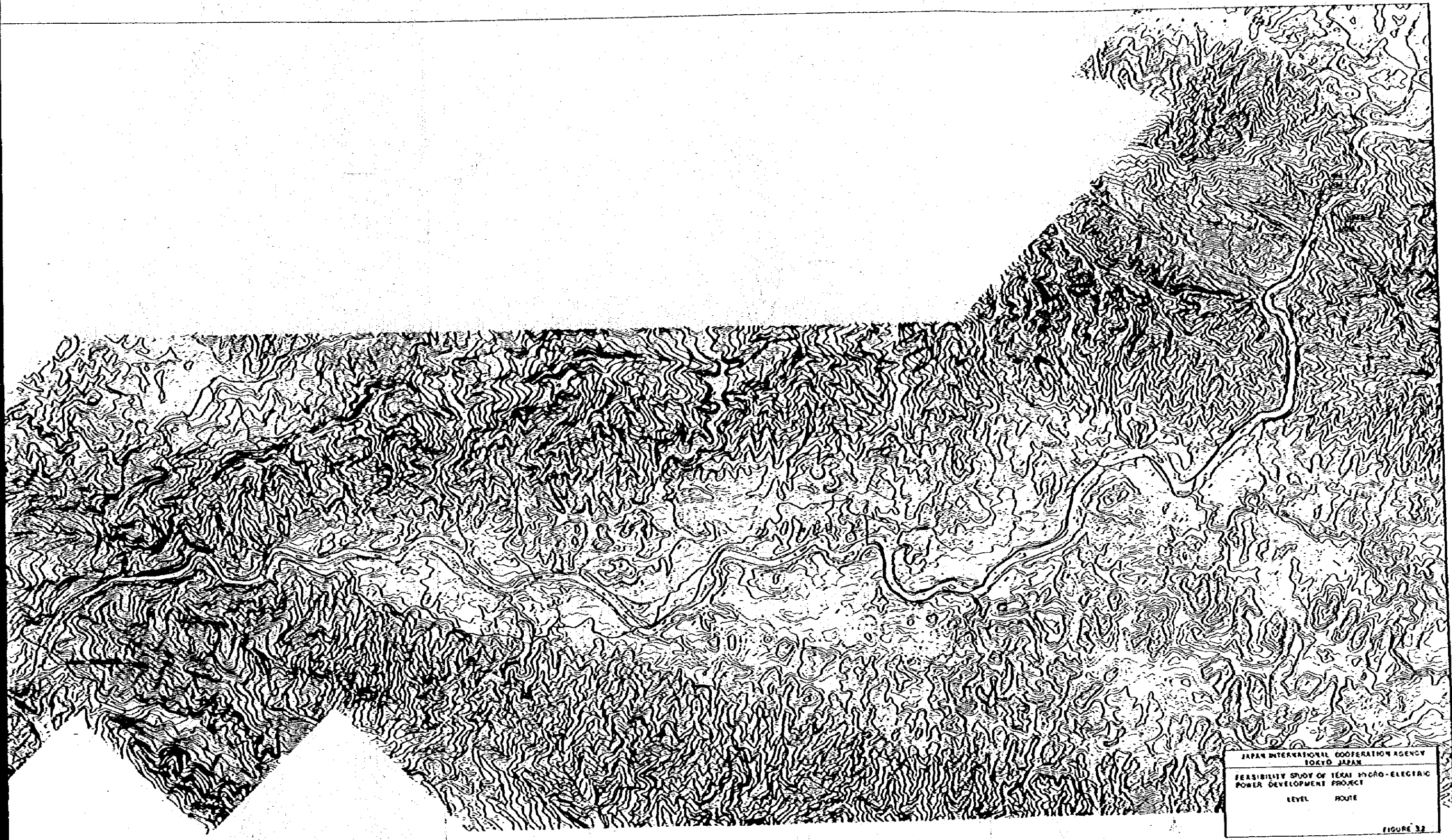
FIGURE 2-16



JAPAN INTERNATIONAL COOPERATION AGENCY
TOKYO, JAPAN
FEASIBILITY STUDY OF TEKA HYDRO-ELECTRIC
POWER DEVELOPMENT PROJECT
Location of NNSS
FIGURE 5.1



JAPAN
EARTH
POWER



JAPAN INTERNATIONAL COOPERATION AGENCY
TOKYO JAPAN
FEASIBILITY STUDY OF TERAI MYCÁO-ELECTRIC
POWER DEVELOPMENT PROJECT
LEVEL ROUTE
FIGURE 32

