

付 図

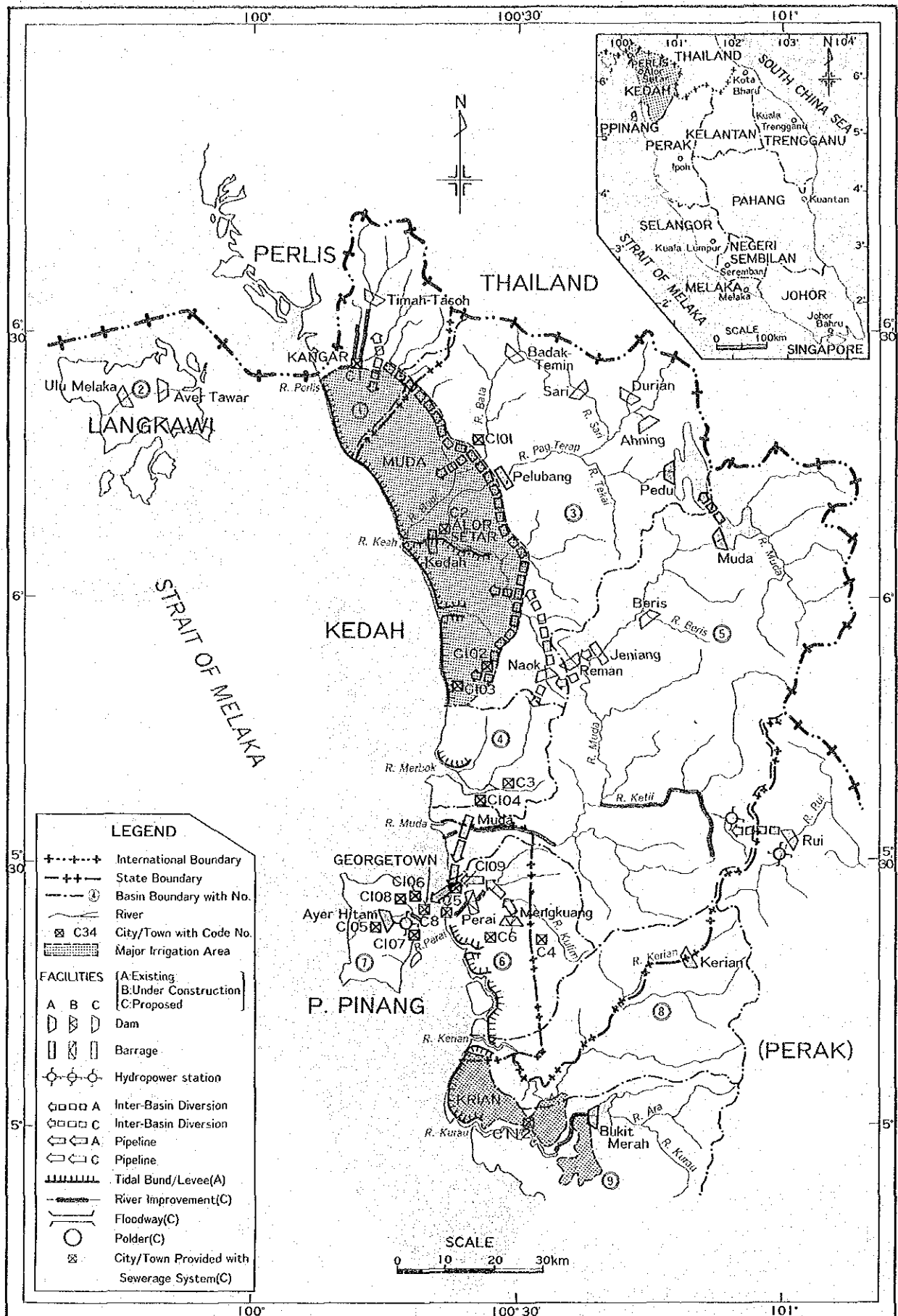


図-1 ペルリス・ケダ・ペナン各州水資源開発計画

GOVERNMENT OF MALAYSIA
NATIONAL WATER RESOURCES STUDY MALAYSIA

JAPAN INTERNATIONAL COOPERATION AGENCY

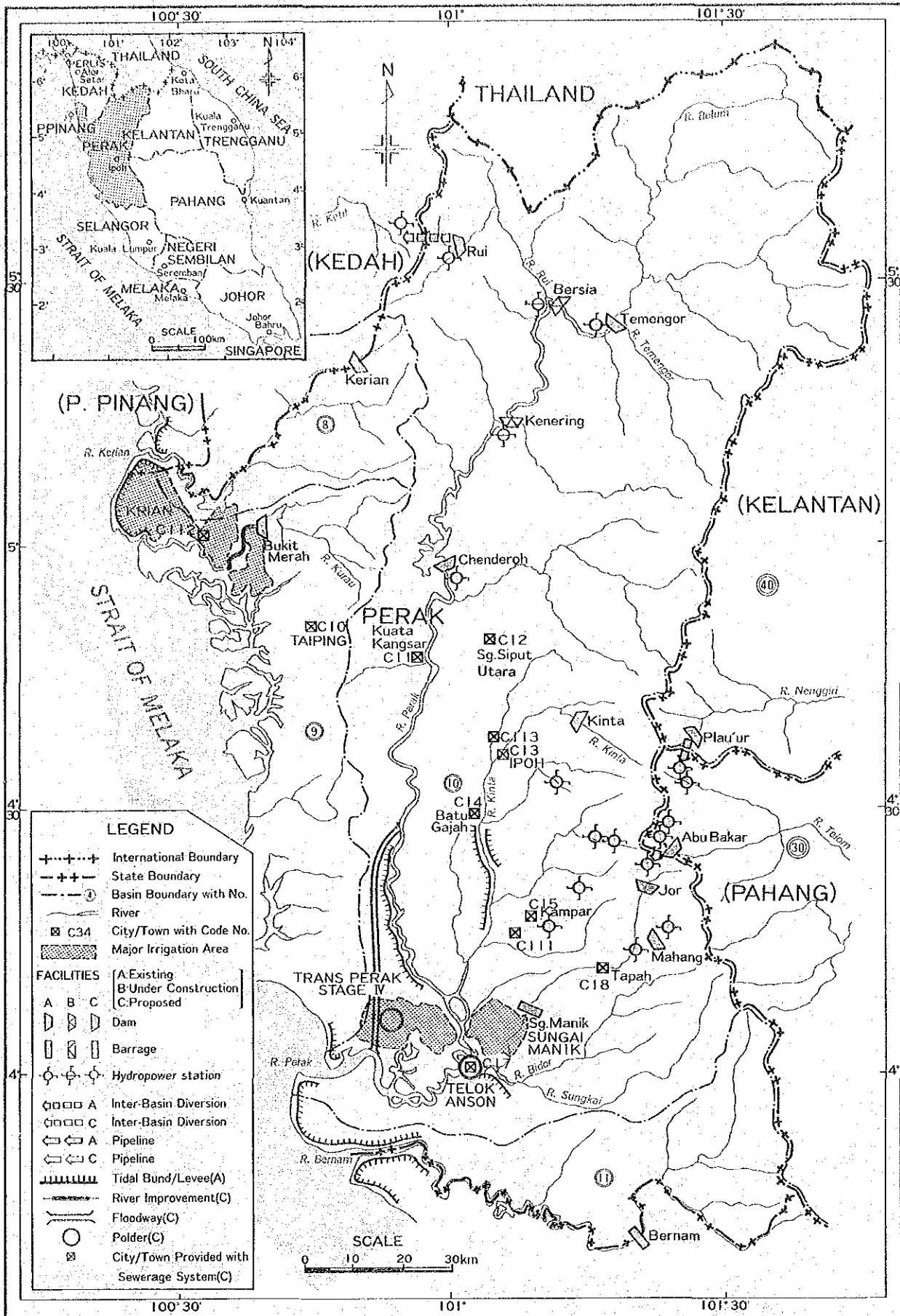


図-2 ペラ州水資源開発計画

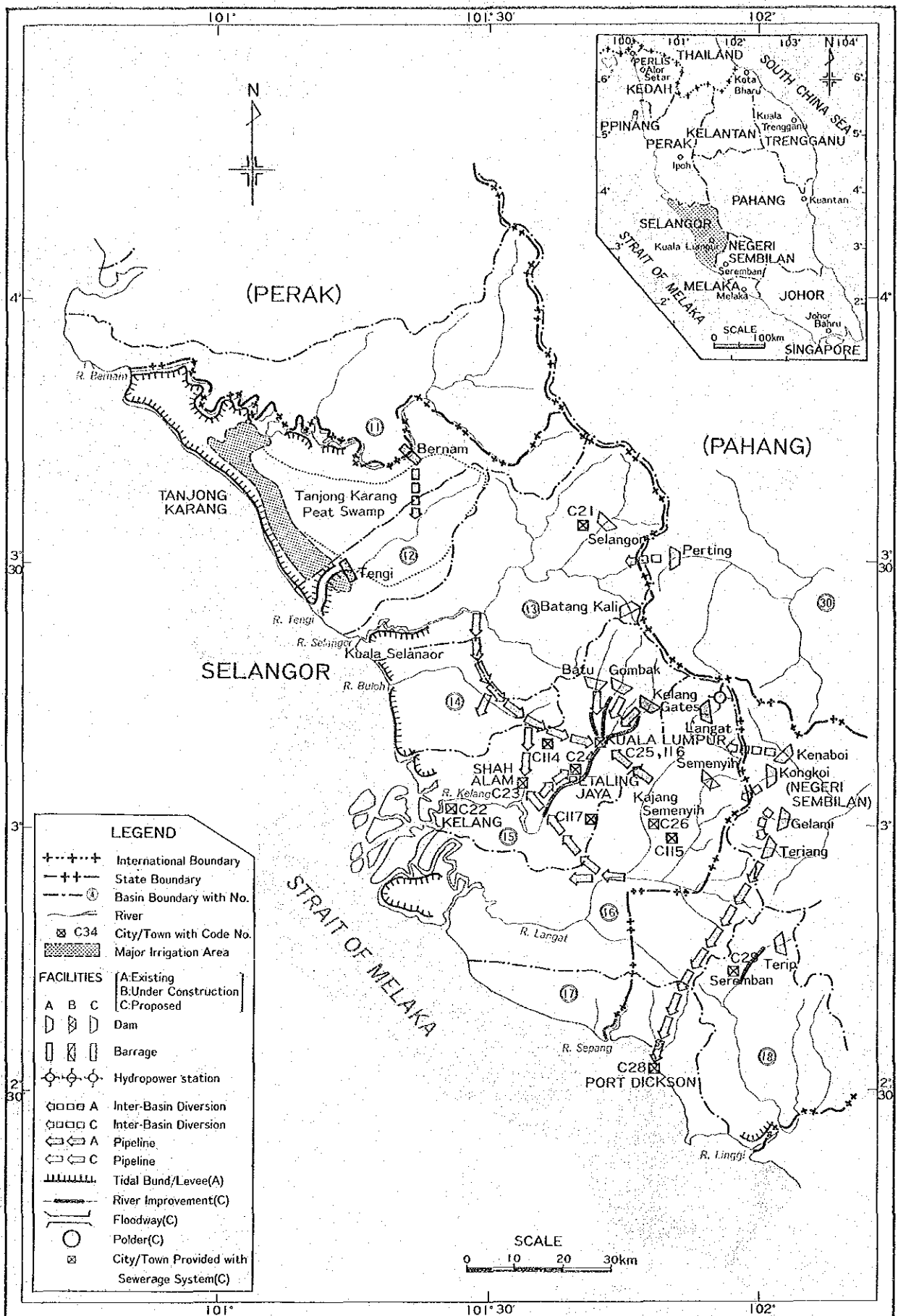


図-3 セランゴール州水資源開発計画

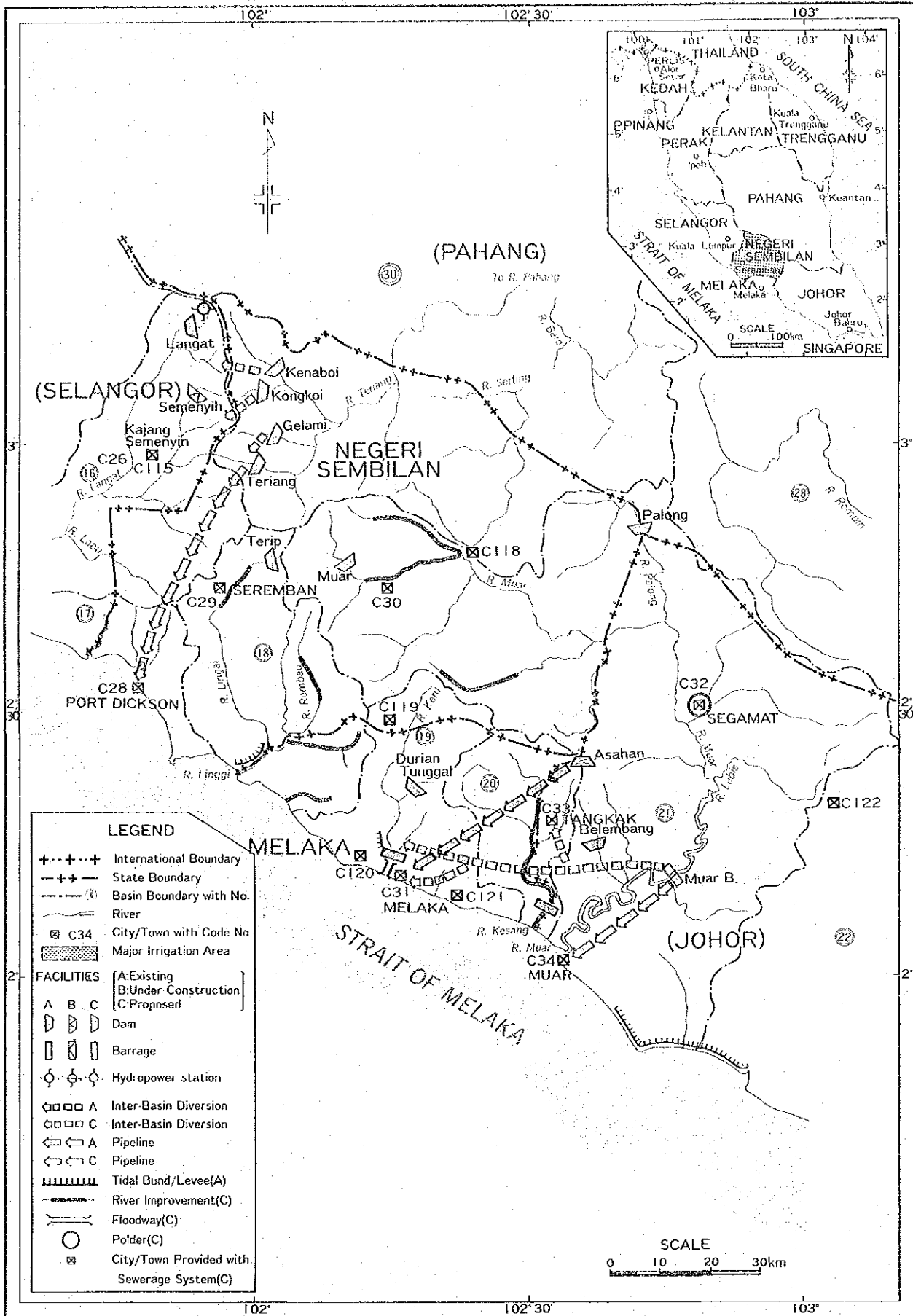
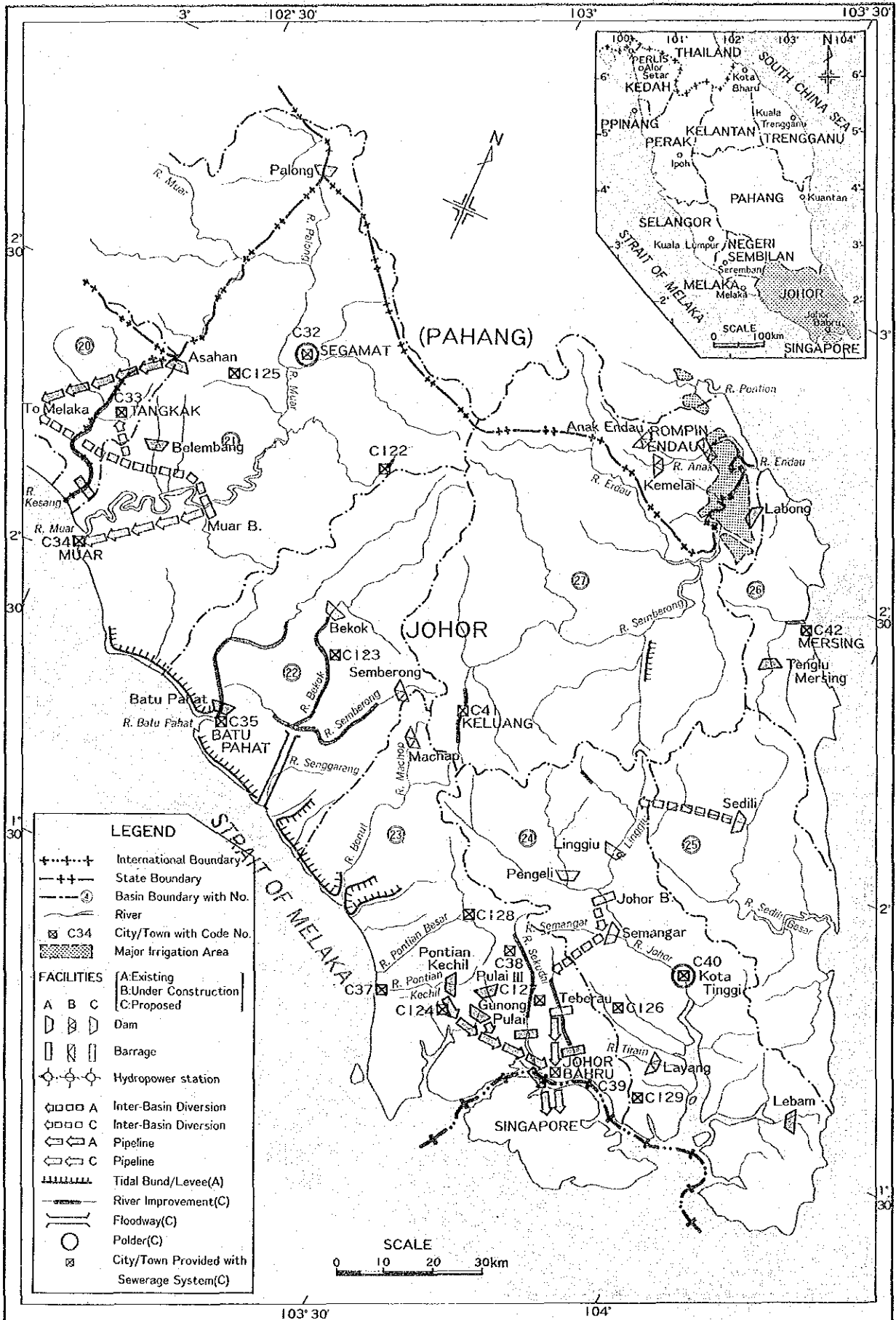


図-4 ネグリセンピラン・マラッカ両州水資源開発計画

GOVERNMENT OF MALAYSIA
NATIONAL WATER RESOURCES STUDY MALAYSIA

JAPAN INTERNATIONAL COOPERATION AGENCY



| LEGEND | |
|-------------|---|
| ---+---+--- | International Boundary |
| ---++--- | State Boundary |
| ---(---)--- | Basin Boundary with No. |
| ~~~~~ | River |
| ⊠ C34 | City/Town with Code No. |
| ▨ | Major Irrigation Area |
| FACILITIES | |
| (A) (B) (C) | (A: Existing, B: Under Construction, C: Proposed) |
| ▭ ▭ ▭ | Dam |
| ▭ ▭ ▭ | Barrage |
| ⊙ ⊙ ⊙ | Hydropower station |
| ⊠ ⊠ ⊠ A | Inter-Basin Diversion |
| ⊠ ⊠ ⊠ C | Inter-Basin Diversion |
| ⊠ ⊠ ⊠ A | Pipeline |
| ⊠ ⊠ ⊠ C | Pipeline |
| ▨ ▨ ▨ | Tidal Bund/Levee(A) |
| ▨ ▨ ▨ | River Improvement(C) |
| ▨ ▨ ▨ | Floodway(C) |
| ○ | Polder(C) |
| ⊠ | City/Town Provided with Sewerage System(C) |

図-5 ジョホール州水資源開発計画

GOVERNMENT OF MALAYSIA
 NATIONAL WATER RESOURCES STUDY MALAYSIA
 JAPAN INTERNATIONAL COOPERATION AGENCY



図-6 パハン州水資源開発計画

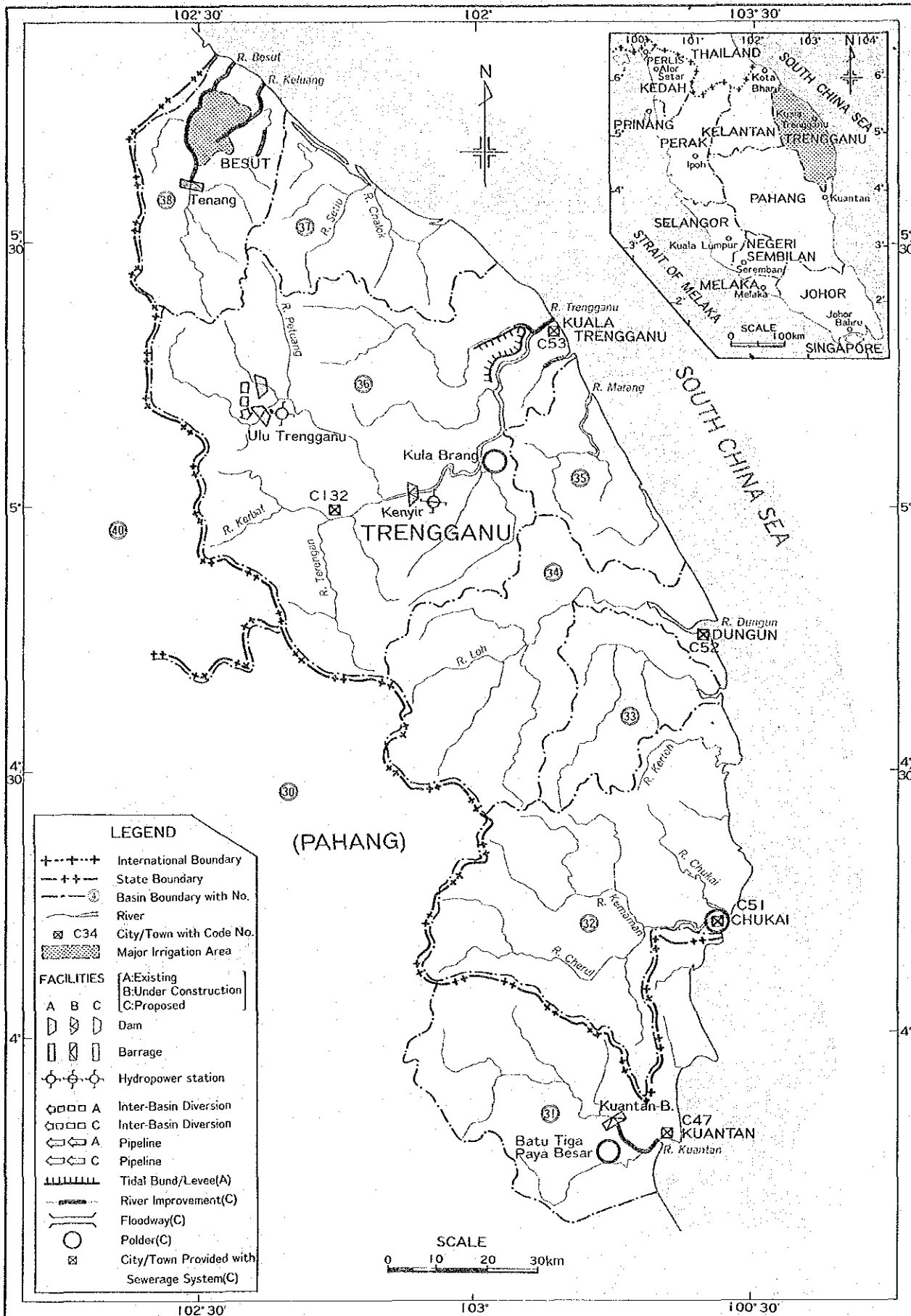


図-7 トレンガヌ州水資源開発計画

GOVERNMENT OF MALAYSIA
NATIONAL WATER RESOURCES STUDY MALAYSIA

JAPAN INTERNATIONAL COOPERATION AGENCY

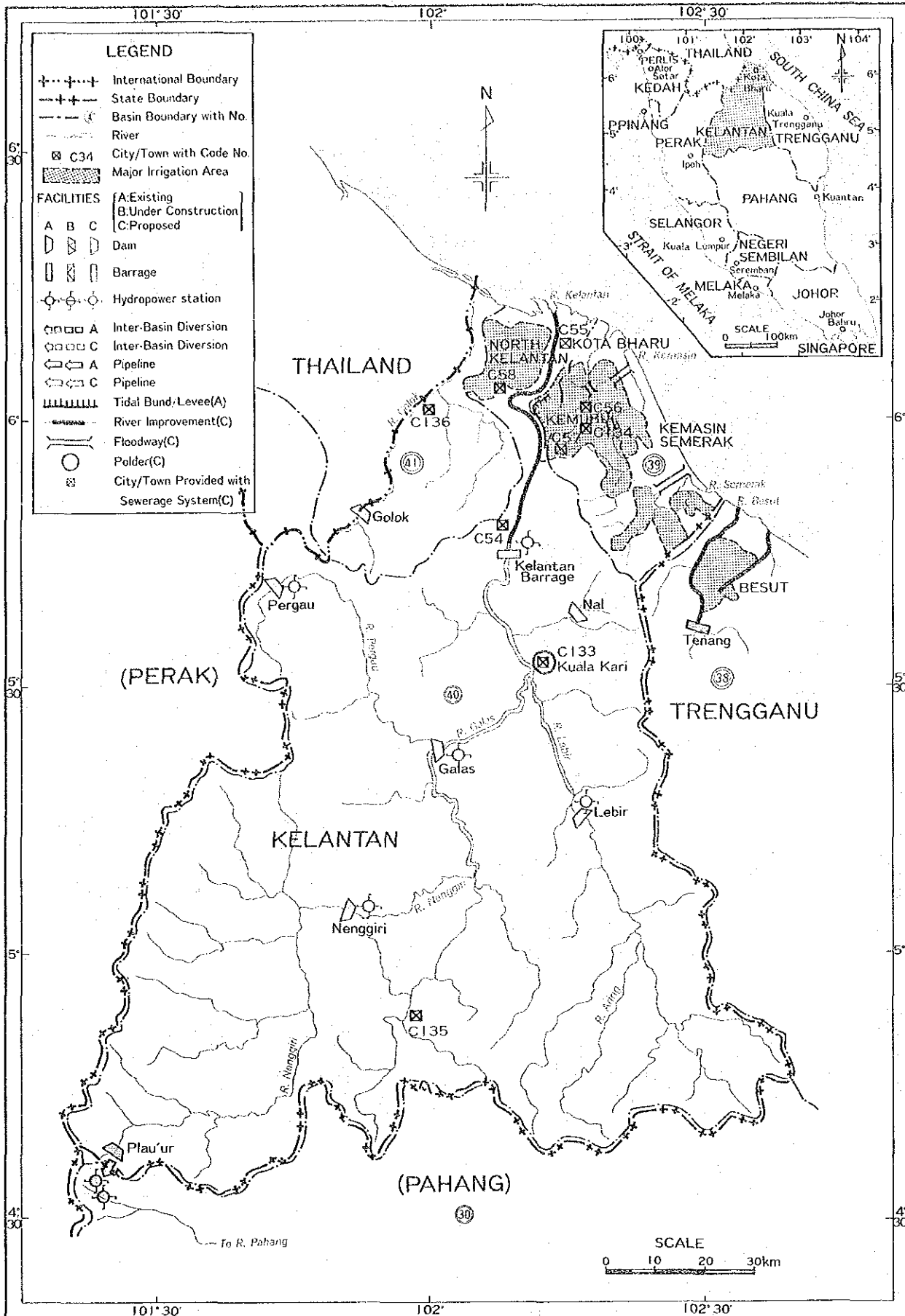


図-8 クラントン州水資源開発計画

GOVERNMENT OF MALAYSIA
NATIONAL WATER RESOURCES STUDY MALAYSIA

JAPAN INTERNATIONAL COOPERATION AGENCY

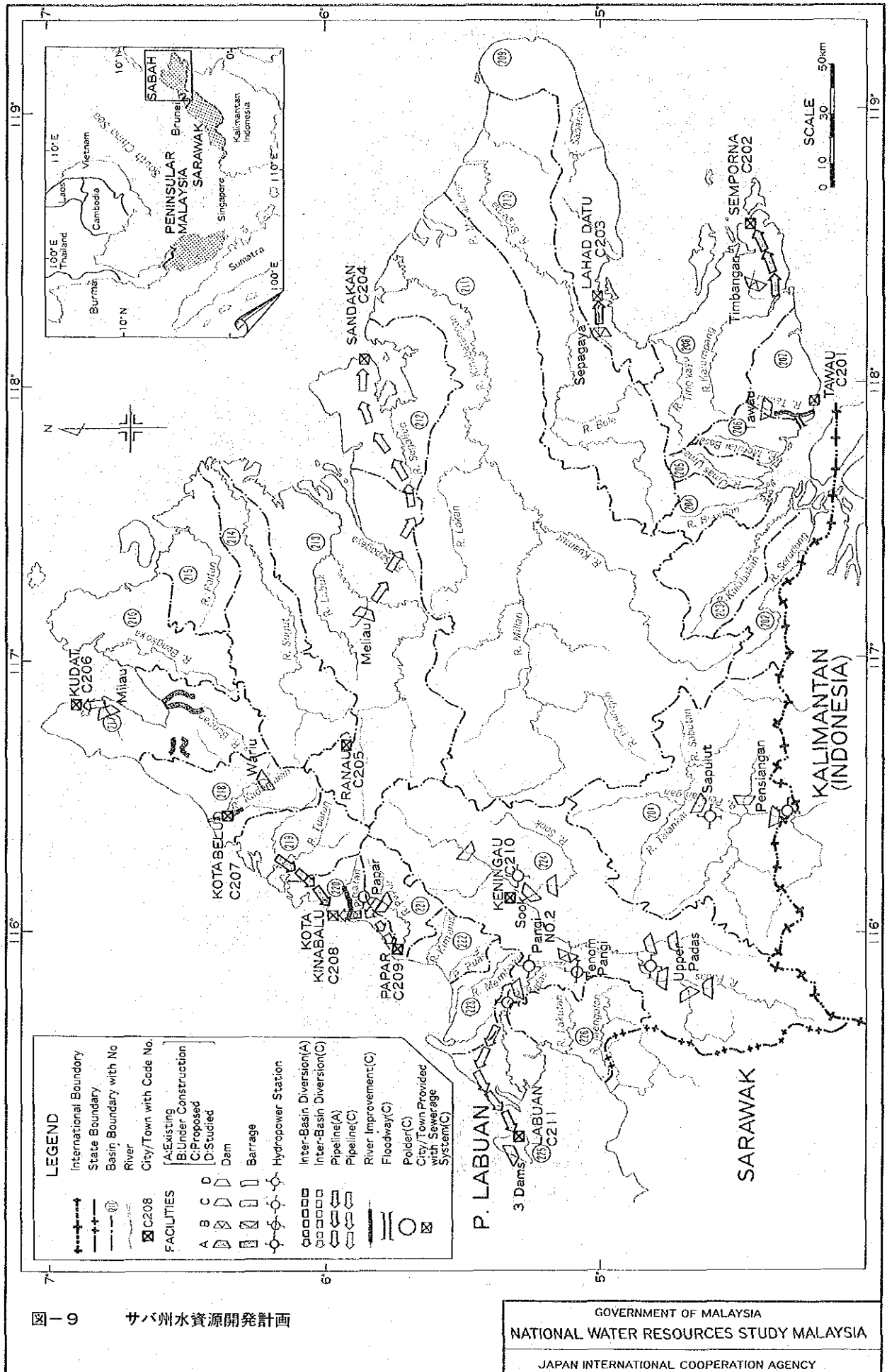


図-9 サバ州水資源開発計画

GOVERNMENT OF MALAYSIA
 NATIONAL WATER RESOURCES STUDY MALAYSIA
 JAPAN INTERNATIONAL COOPERATION AGENCY

LEGEND

- International Boundary
- State Boundary
- Basin Boundary with No
- River
- City/Town with Code No.

FACILITIES

- (A) Existing
- (B) Under Construction
- (C) Proposed
- (D) Studied

- Dam
- Barrage
- Hydropower Station
- Inter-Basin Diversion(A)
- Inter-Basin Diversion(C)
- Pipeline(A)
- Pipeline(C)
- River Improvement(C)
- Floodway(C)
- Polder(C)
- City/Town Provided with Sewerage System(C)

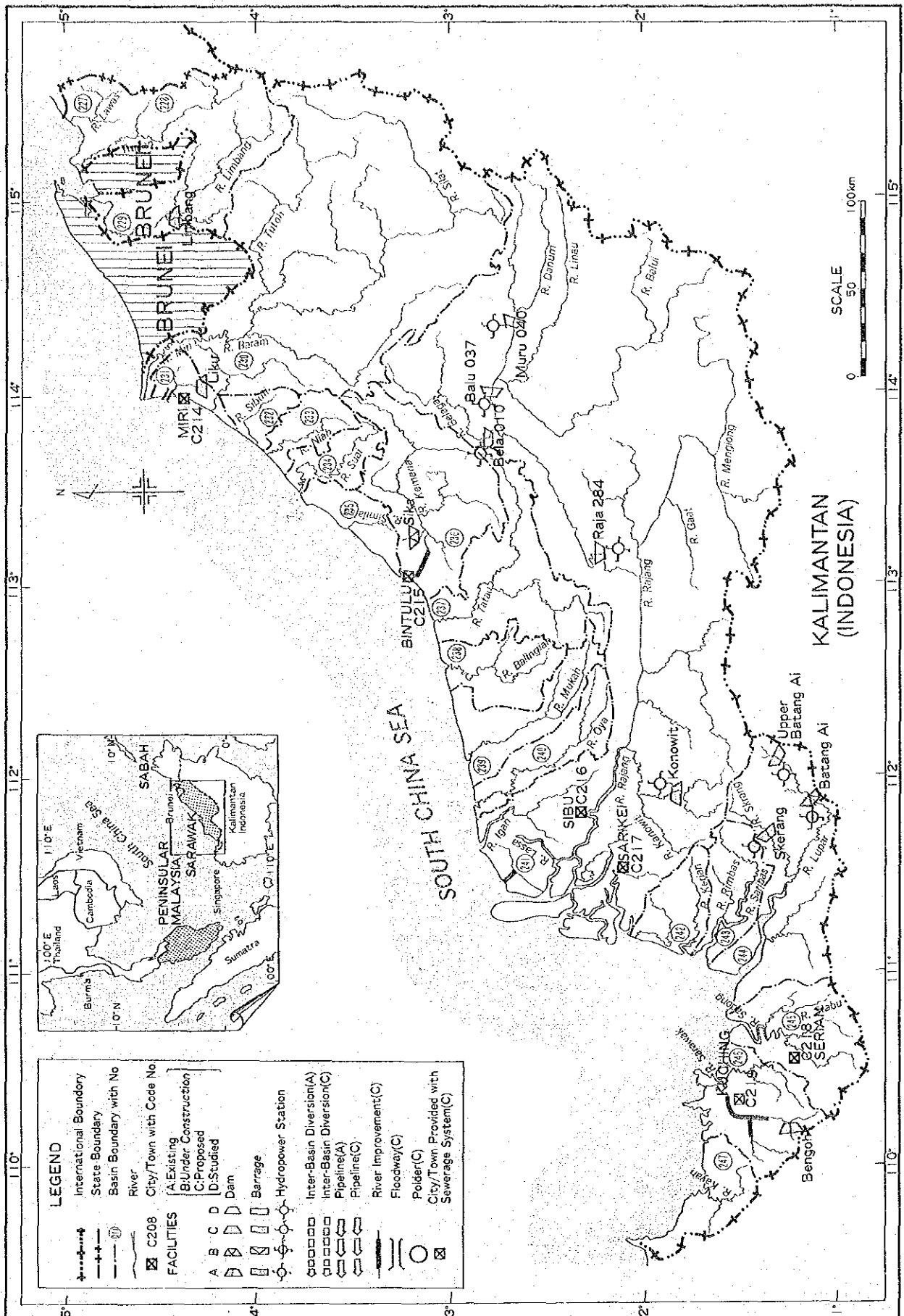


図-10 サラワク州水資源開発計画

GOVERNMENT OF MALAYSIA
 NATIONAL WATER RESOURCES STUDY MALAYSIA
 JAPAN INTERNATIONAL COOPERATION AGENCY

BOD Concentration (mg/lit)

0 5 10 15

Environmental Quality

Self Purification by River

Odors Occurrence from River

Fish Inhabitation
(Carp and Silver Carp)

River Water Quality Standard

Netherlands

River Water Quality Standard

Oklahoma State, USA

for Domestic Water Supply

USSR

for Domestic Water Supply &
Food Manufacturing

for Bathing, Sports & Recreation

Philippines

for Domestic Water Supply

for Bathing

for Fishing

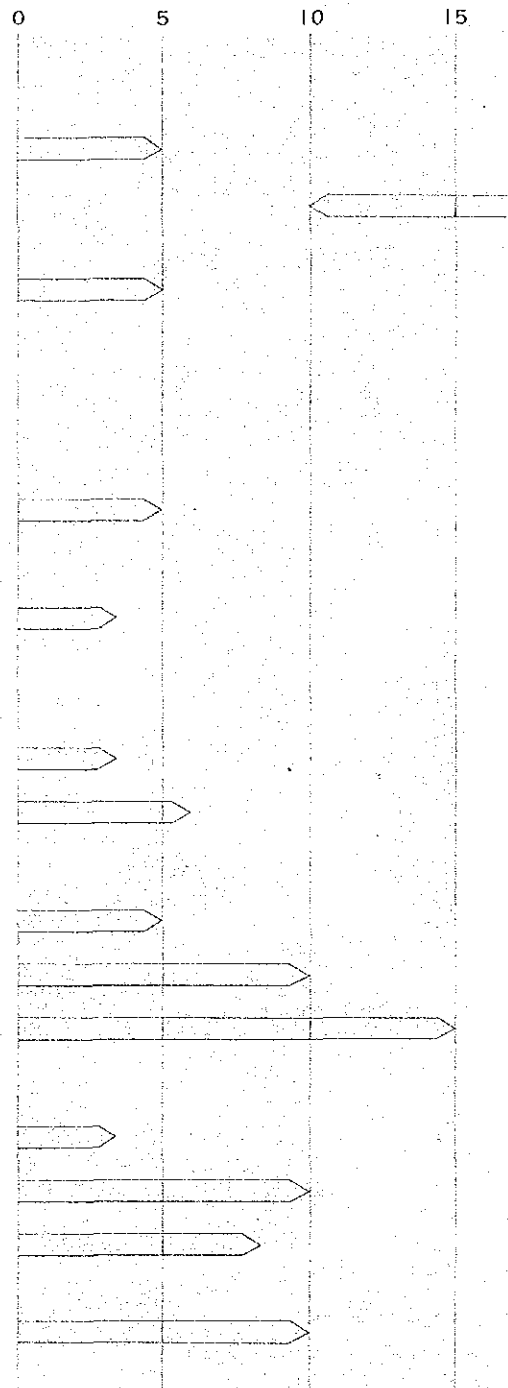
Japan

for Domestic Water Supply

for Industrial Water Supply

for Agricultural Water Supply

for Preservation of Environmental Quality



図一 11 諸外国におけるBOD濃度標示による河川水質基準

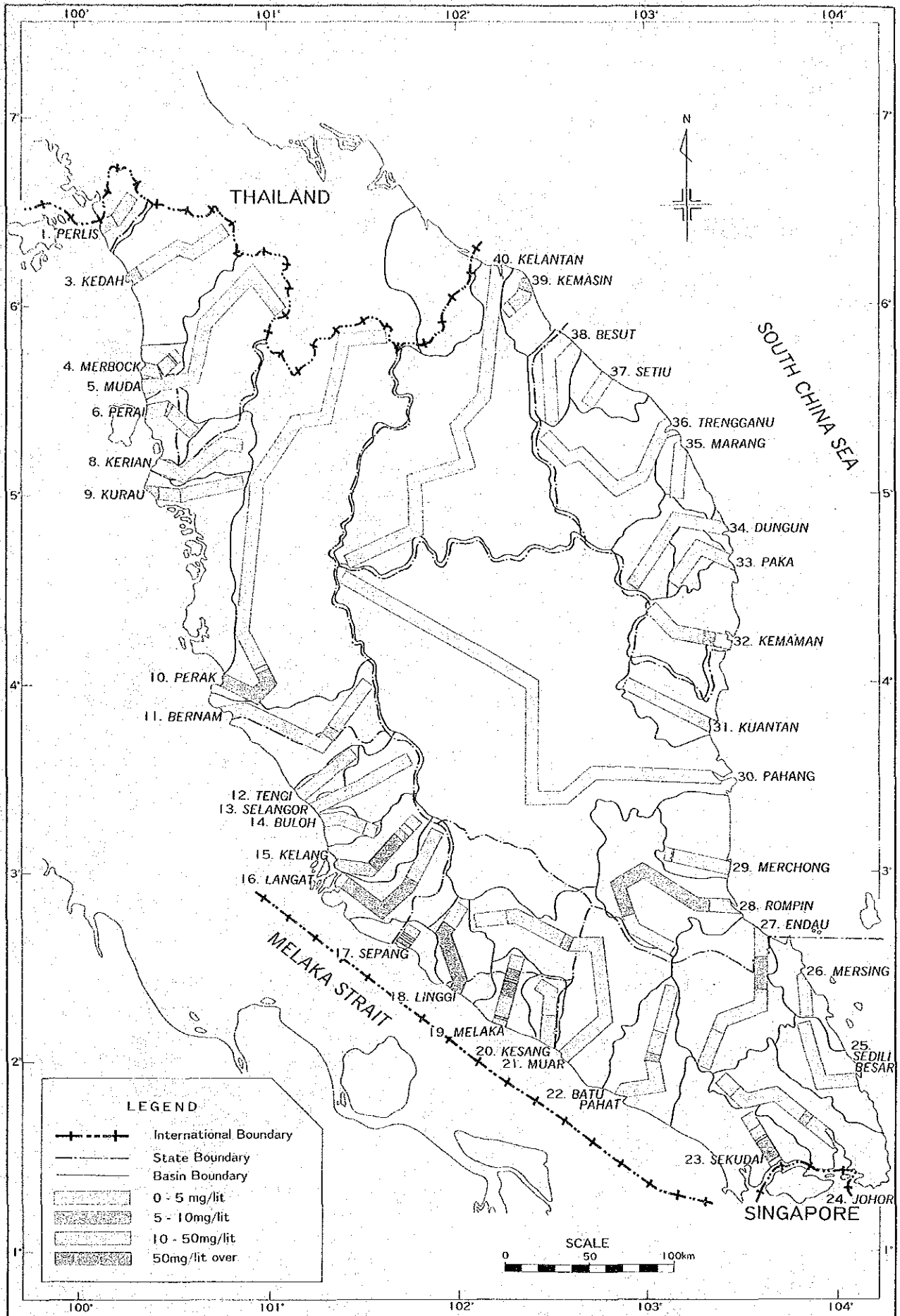


図-12 西暦2000年における半島諸河川BOD濃度
(事業実施せず)

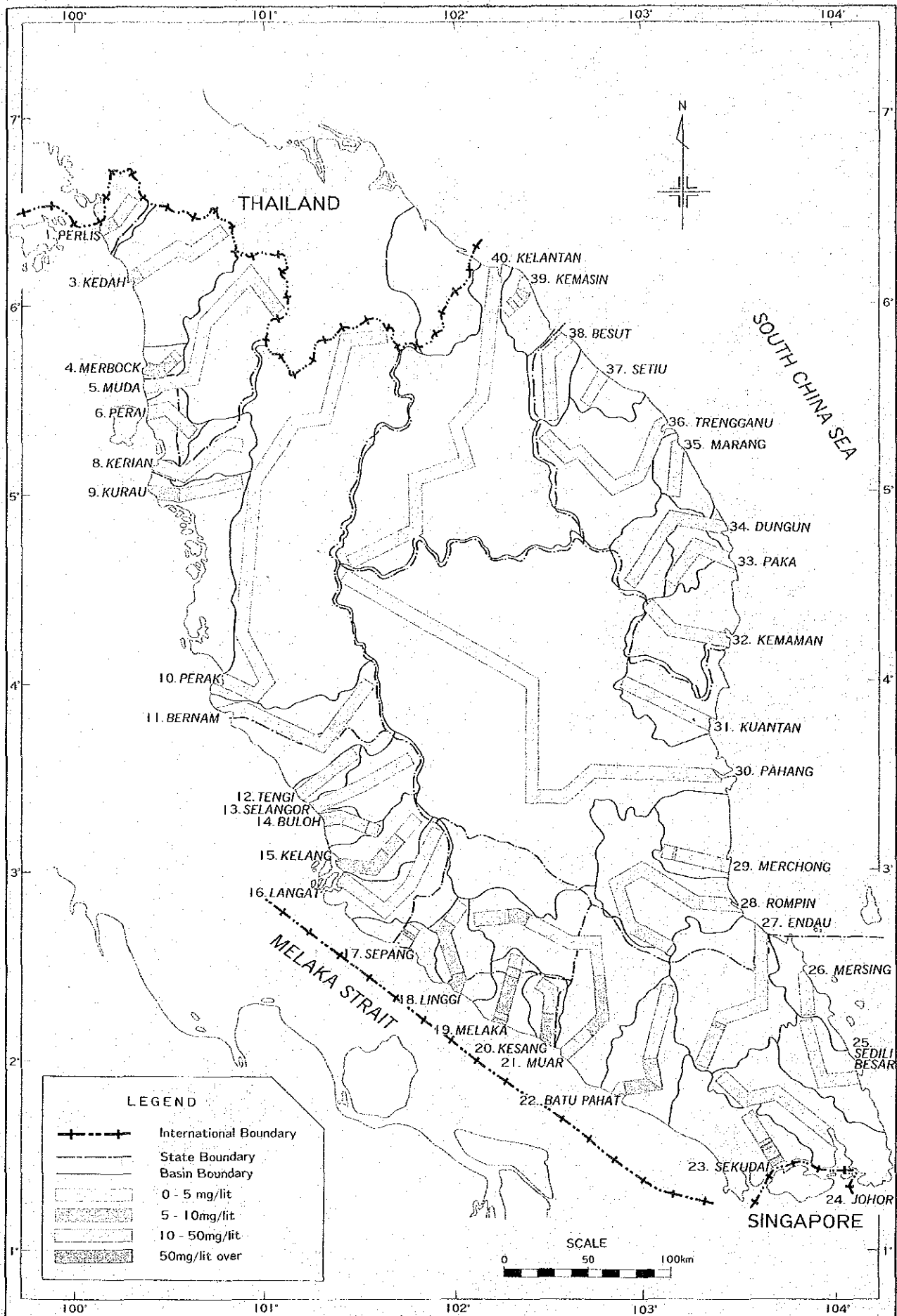


図-13 西歴2000年における半島諸河川BOD濃度 (事業実施後)

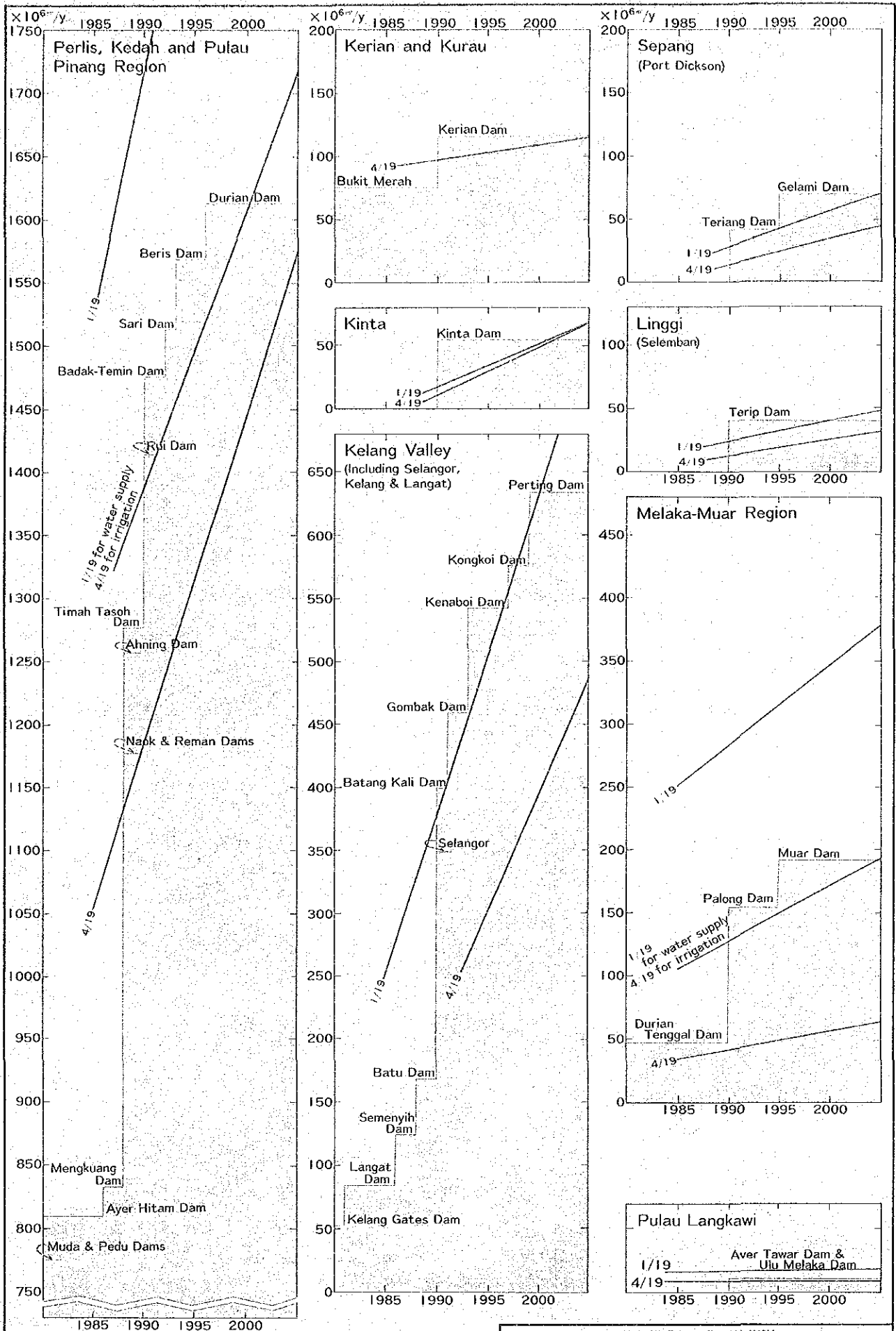


図-14 水資源需給バランス計画 (1/2)

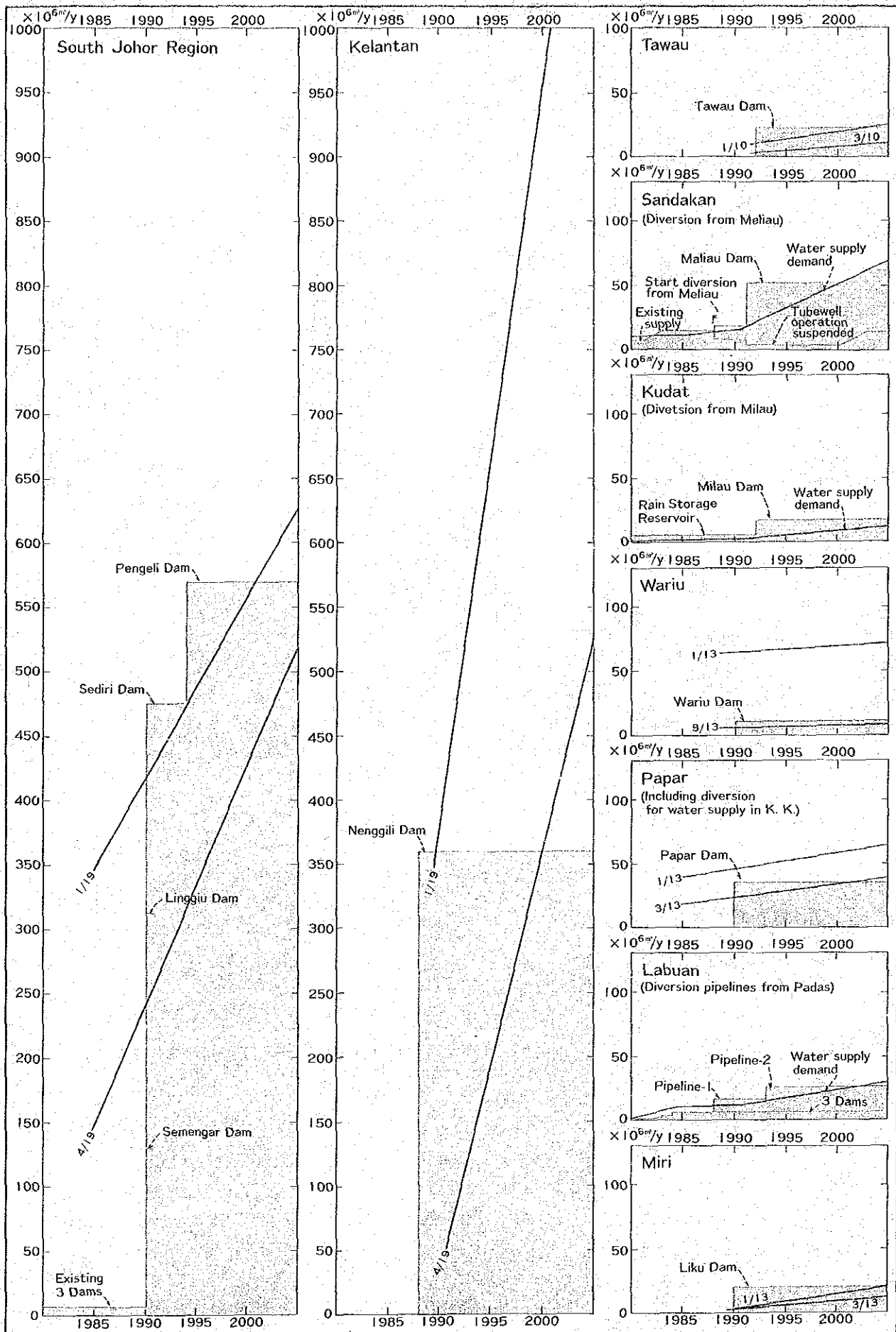


図-15 水資源需給バランス計画(2/2)

GOVERNMENT OF MALAYSIA
NATIONAL WATER RESOURCES STUDY MALAYSIA

JAPAN INTERNATIONAL COOPERATION AGENCY

