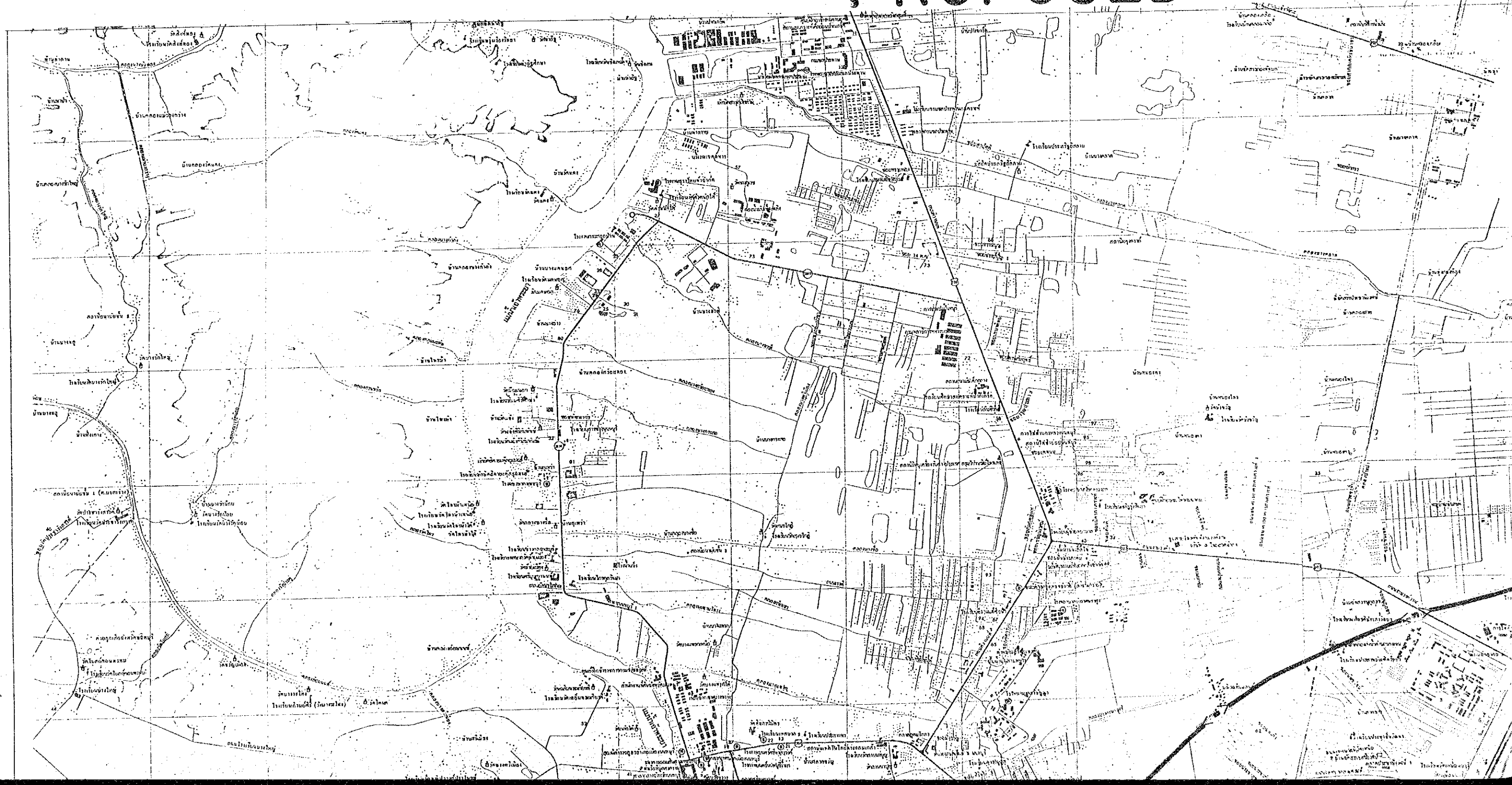
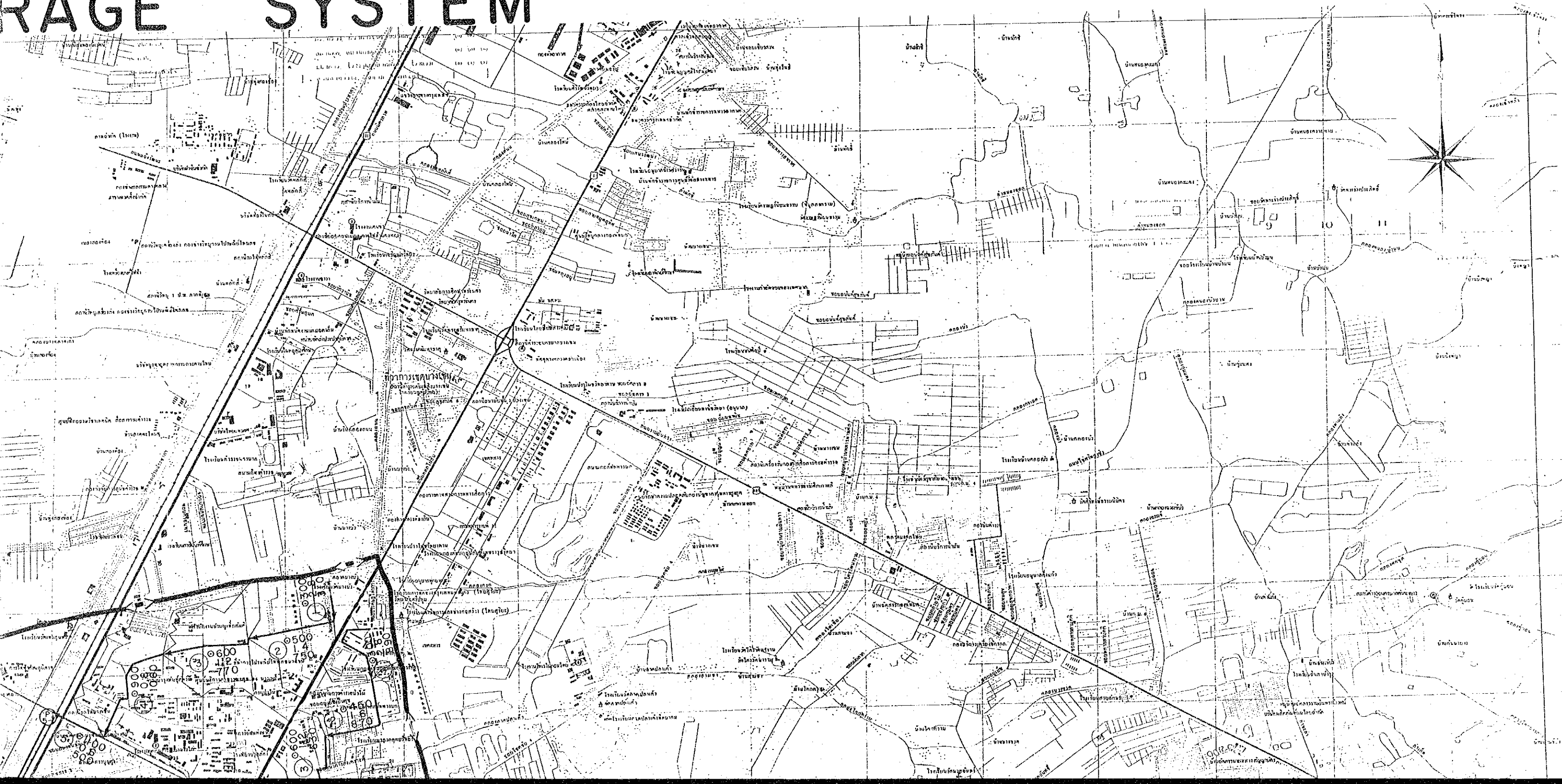


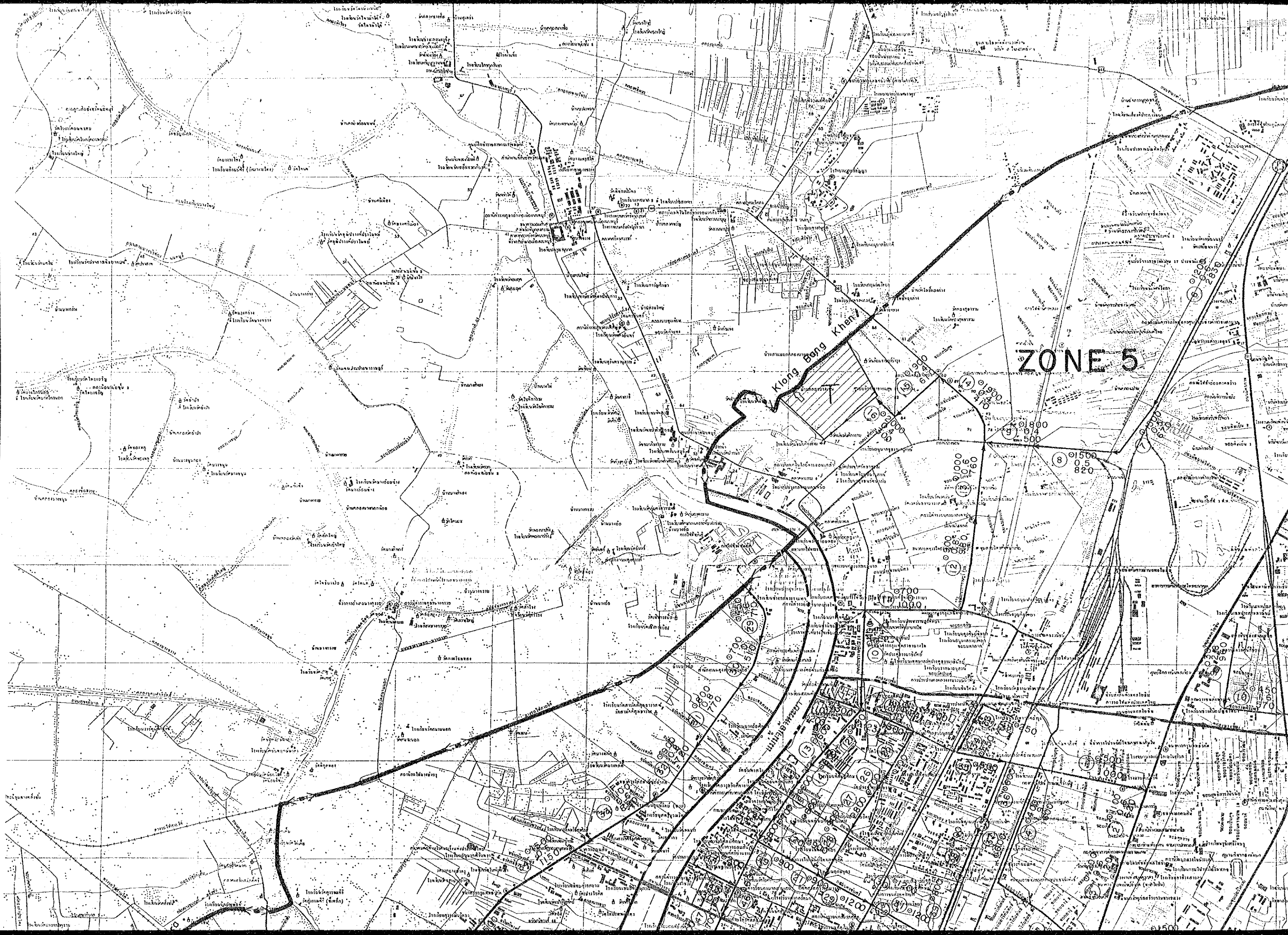
6. PLAN
FOR
PROPOSED SEWERAGE SYSTEM

BANGKOK PROPOSED SEWER



KOK RAGE SYSTEM

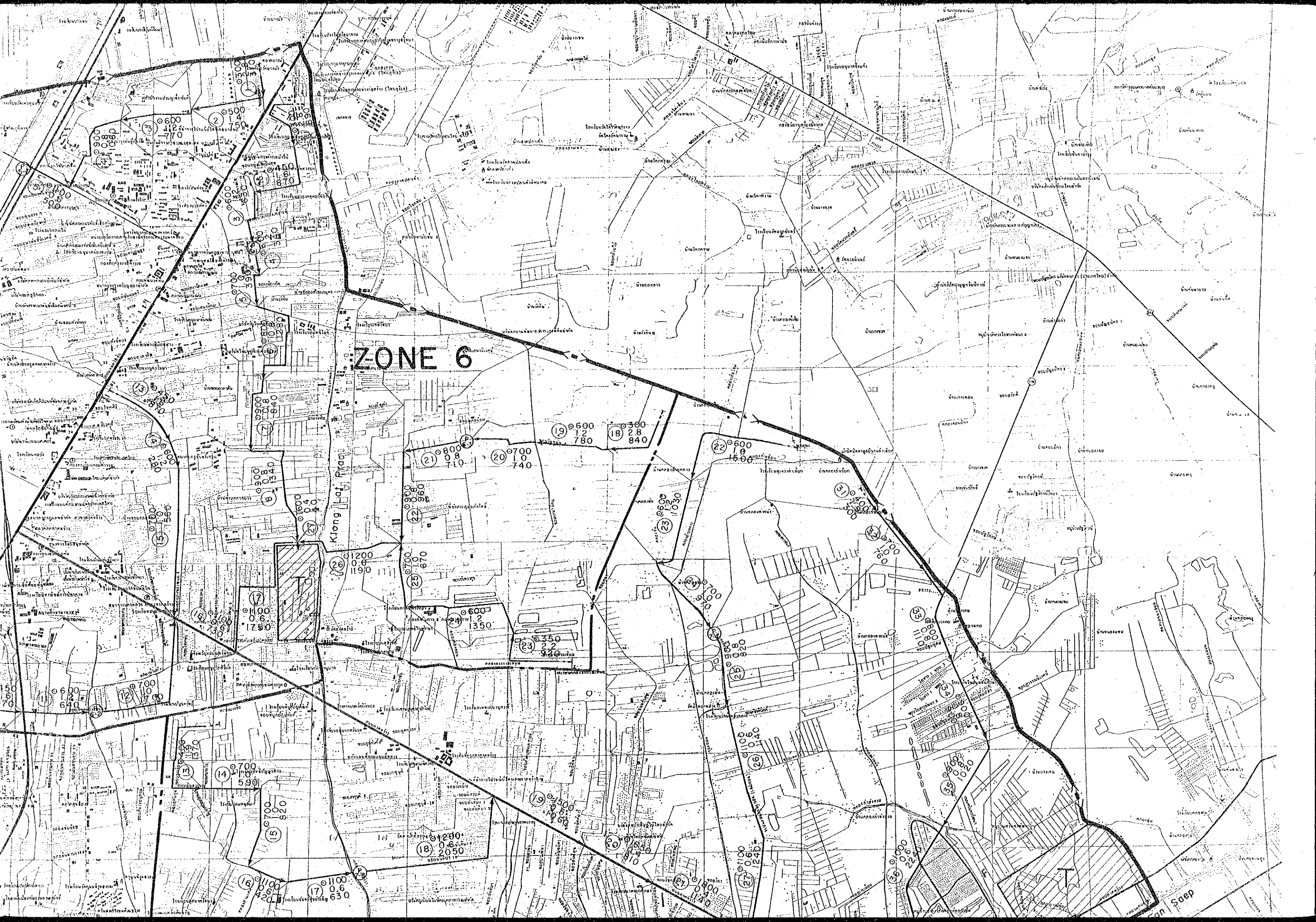




ZONE 5

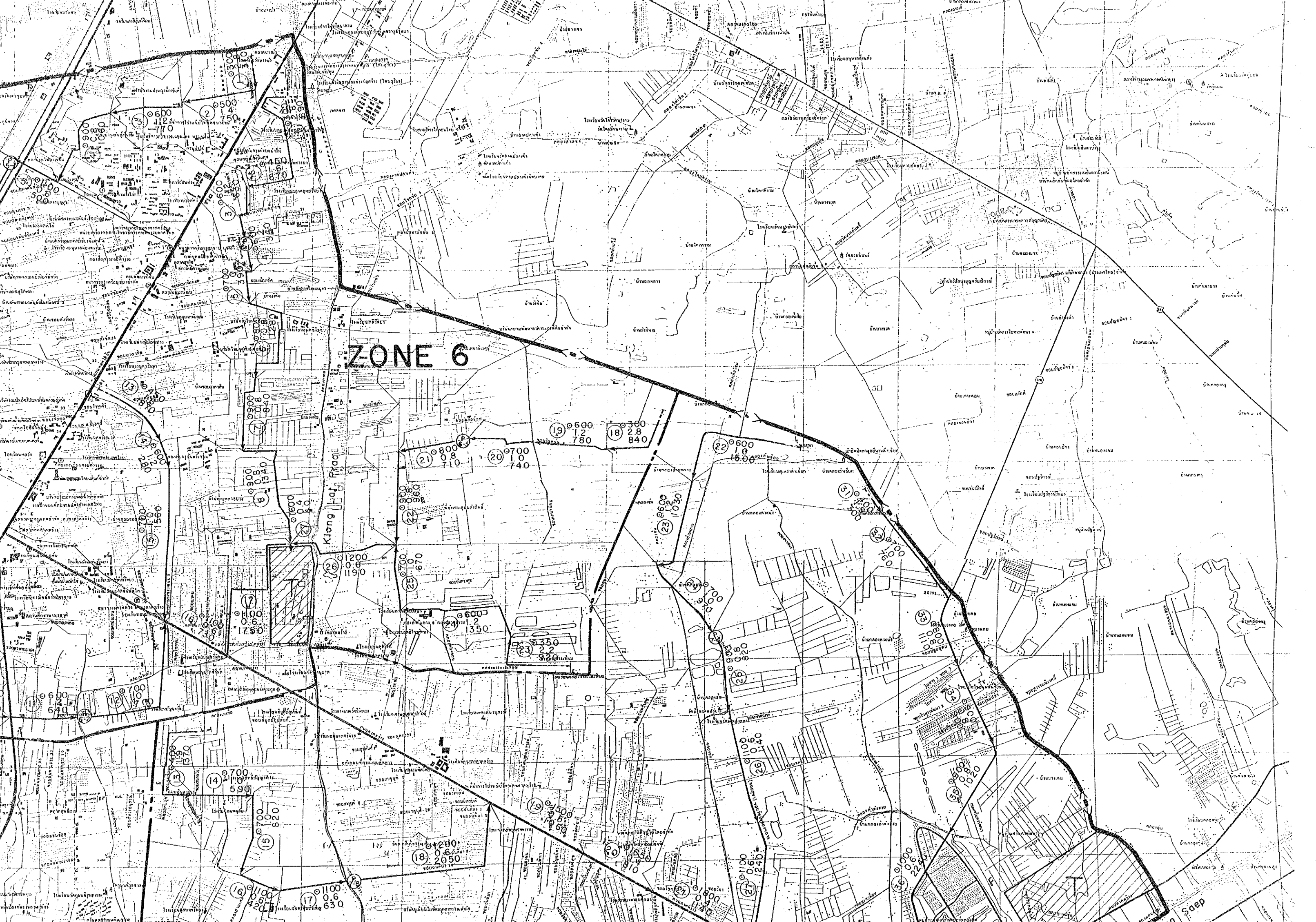
Klong Bang Kheng

Map containing numerous small text labels in Thai script, including street names, building identifiers, and elevation points. Numerical annotations include 1500, 1800, 1900, 1700, 1600, 1550, 1520, 1480, 1450, 1420, 1380, 1350, 1320, 1280, 1250, 1220, 1180, 1150, 1120, 1080, 1050, 1020, 980, 950, 920, 880, 850, 820, 780, 750, 720, 680, 650, 620, 580, 550, 520, 480, 450, 420, 380, 350, 320, 280, 250, 220, 180, 150, 120, 80, 40, 0.



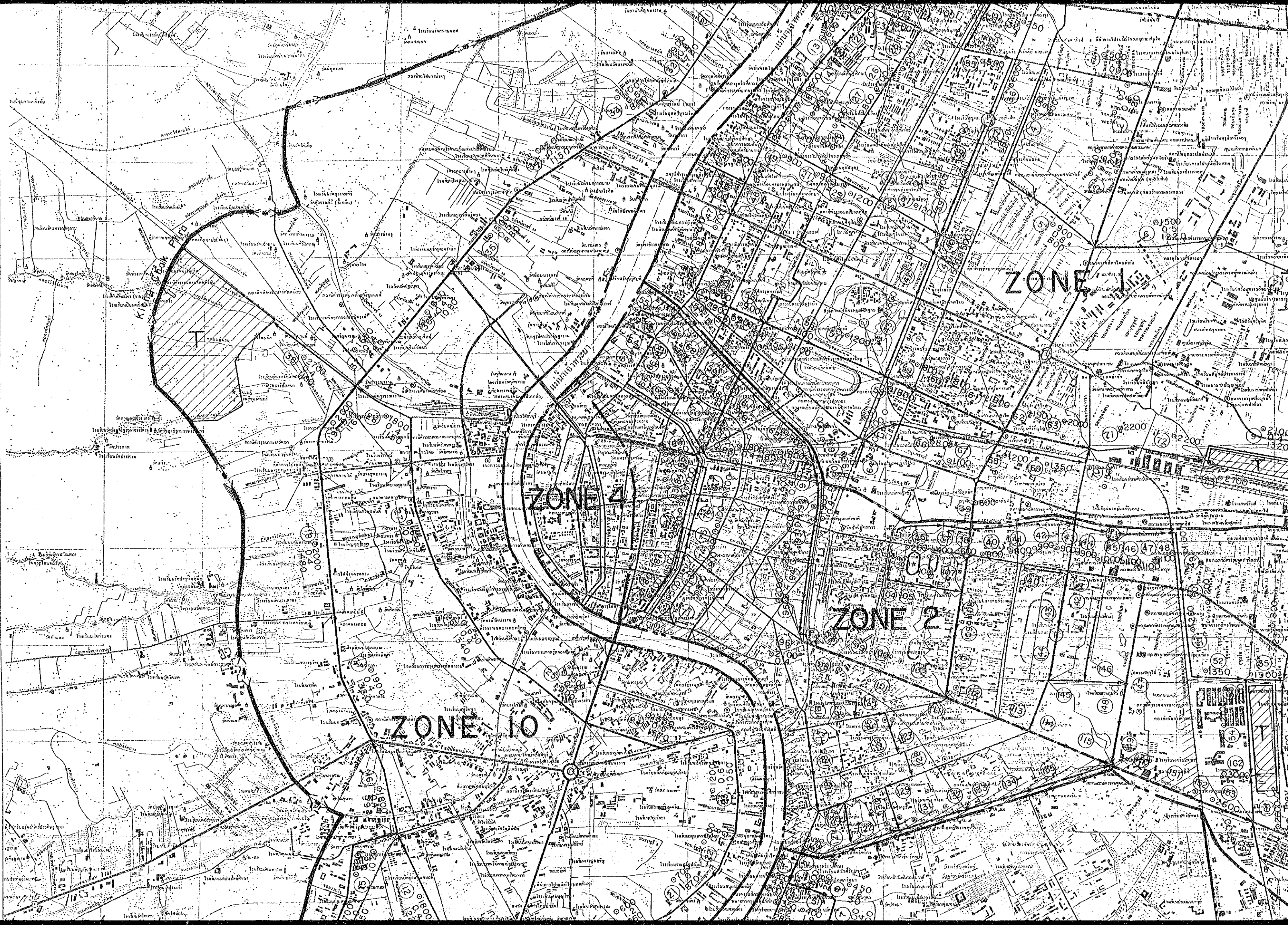
ZONE 6

Klong Lat Praq



1 600 1.2 780
2 600 1.4 870
3 600 1.5 900
4 600 1.6 930
5 600 1.7 960
6 600 1.8 990
7 600 1.9 1020
8 600 2.0 1050
9 600 2.1 1080
10 600 2.2 1110
11 600 2.3 1140
12 600 2.4 1170
13 600 2.5 1200
14 600 2.6 1230
15 600 2.7 1260
16 600 2.8 1290
17 600 2.9 1320
18 600 3.0 1350
19 600 3.1 1380
20 600 3.2 1410
21 600 3.3 1440
22 600 3.4 1470
23 600 3.5 1500
24 600 3.6 1530
25 600 3.7 1560
26 600 3.8 1590
27 600 3.9 1620
28 600 4.0 1650
29 600 4.1 1680
30 600 4.2 1710
31 600 4.3 1740
32 600 4.4 1770
33 600 4.5 1800
34 600 4.6 1830
35 600 4.7 1860
36 600 4.8 1890

dan's



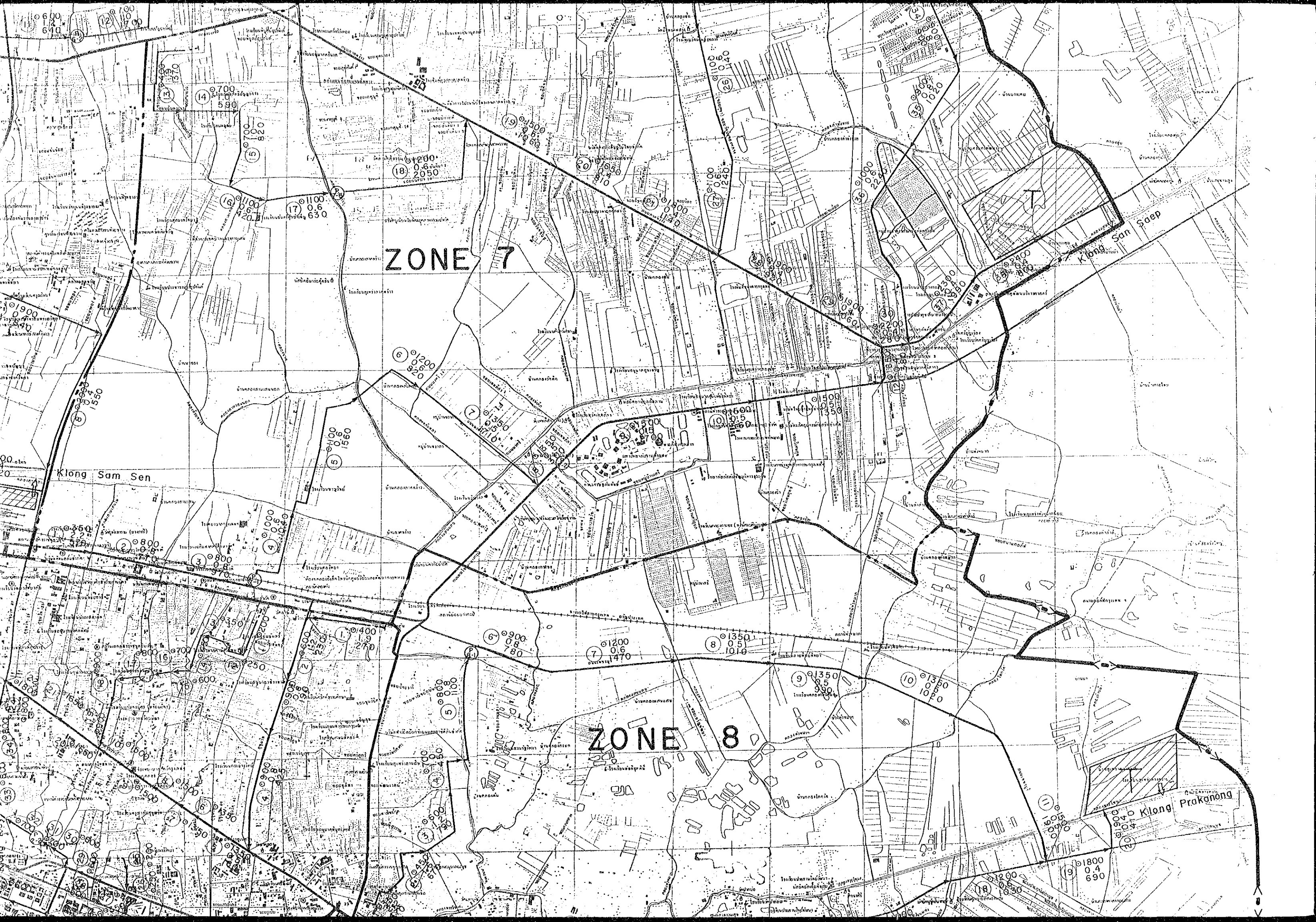
ZONE 1

ZONE 4

ZONE 2

ZONE 10

T



ZONE 7

ZONE 8

Klong Sam Sen

Klong San Saep

Klong Prakanong



600
1200
640

700
1400
700

13 0.700
590

15 0.700
820

16 0.1100
420

17 0.1100
630

18 0.1200
2050

19 0.1500
820

20 0.1500
820

21 0.1500
820

22 0.1500
820

23 0.1500
820

24 0.1500
820

25 0.1500
820

26 0.1500
820

27 0.1500
820

28 0.1500
820

29 0.1500
820

30 0.1500
820

31 0.1500
820

32 0.1500
820

33 0.1500
820

34 0.1500
820

35 0.1500
820

36 0.1500
820

37 0.1500
820

38 0.1500
820

39 0.1500
820

40 0.1500
820

41 0.1500
820

42 0.1500
820

43 0.1500
820

44 0.1500
820

45 0.1500
820

46 0.1500
820

47 0.1500
820

48 0.1500
820

49 0.1500
820

50 0.1500
820

51 0.1500
820

52 0.1500
820

53 0.1500
820

54 0.1500
820

55 0.1500
820

56 0.1500
820

57 0.1500
820

58 0.1500
820

59 0.1500
820

60 0.1500
820

61 0.1500
820

62 0.1500
820

63 0.1500
820

64 0.1500
820

65 0.1500
820

66 0.1500
820

67 0.1500
820

68 0.1500
820

69 0.1500
820

70 0.1500
820

71 0.1500
820

72 0.1500
820

73 0.1500
820

74 0.1500
820

75 0.1500
820

76 0.1500
820

77 0.1500
820

78 0.1500
820

79 0.1500
820

80 0.1500
820

81 0.1500
820

82 0.1500
820

83 0.1500
820

84 0.1500
820

85 0.1500
820

86 0.1500
820

87 0.1500
820

88 0.1500
820

89 0.1500
820

90 0.1500
820

91 0.1500
820

92 0.1500
820

93 0.1500
820

94 0.1500
820

95 0.1500
820

96 0.1500
820

97 0.1500
820

98 0.1500
820

99 0.1500
820

100 0.1500
820

101 0.1500
820

102 0.1500
820

103 0.1500
820

104 0.1500
820

105 0.1500
820

106 0.1500
820

107 0.1500
820

108 0.1500
820

109 0.1500
820

110 0.1500
820

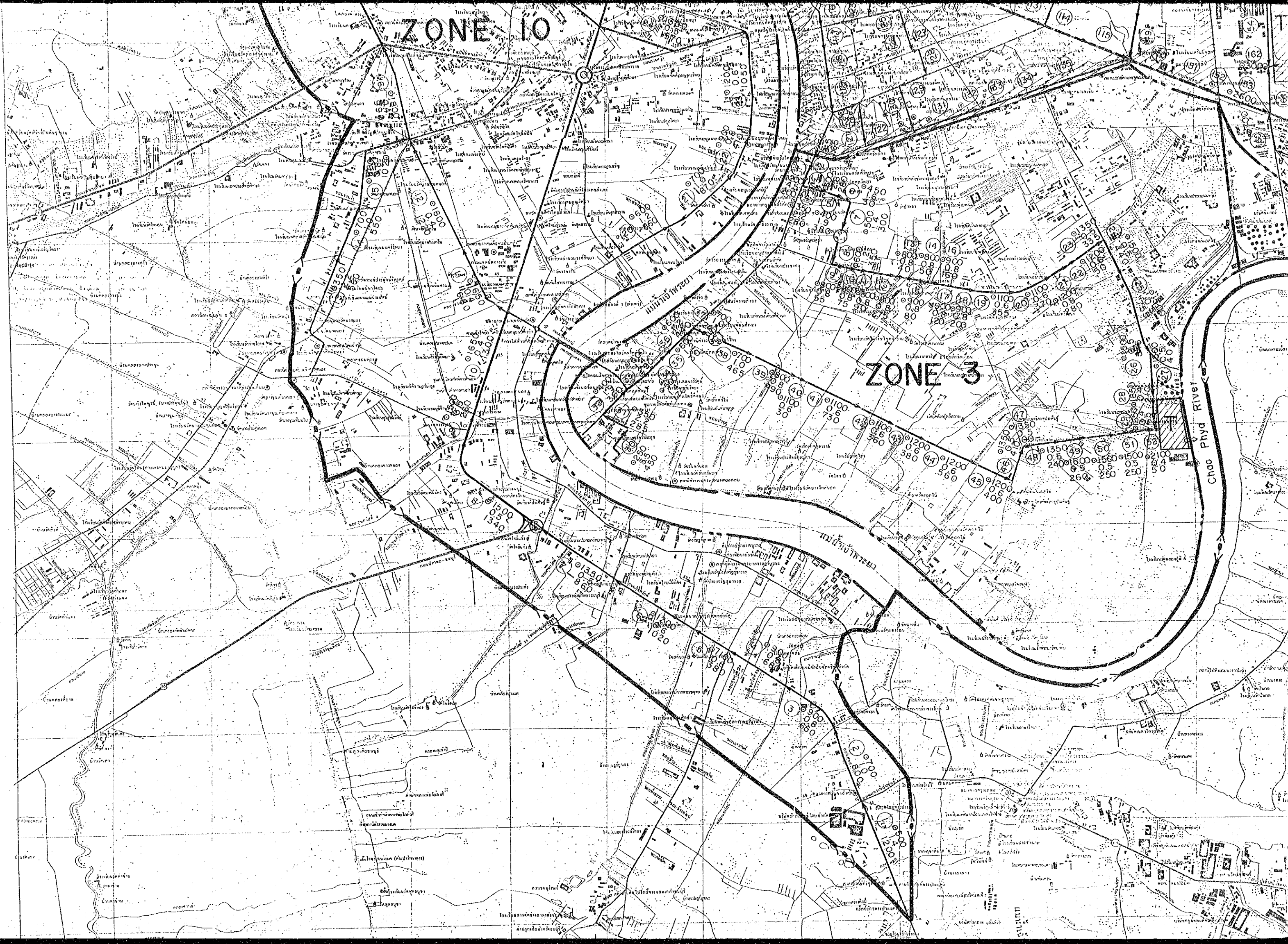
111 0.1500
820

112 0.1500
820

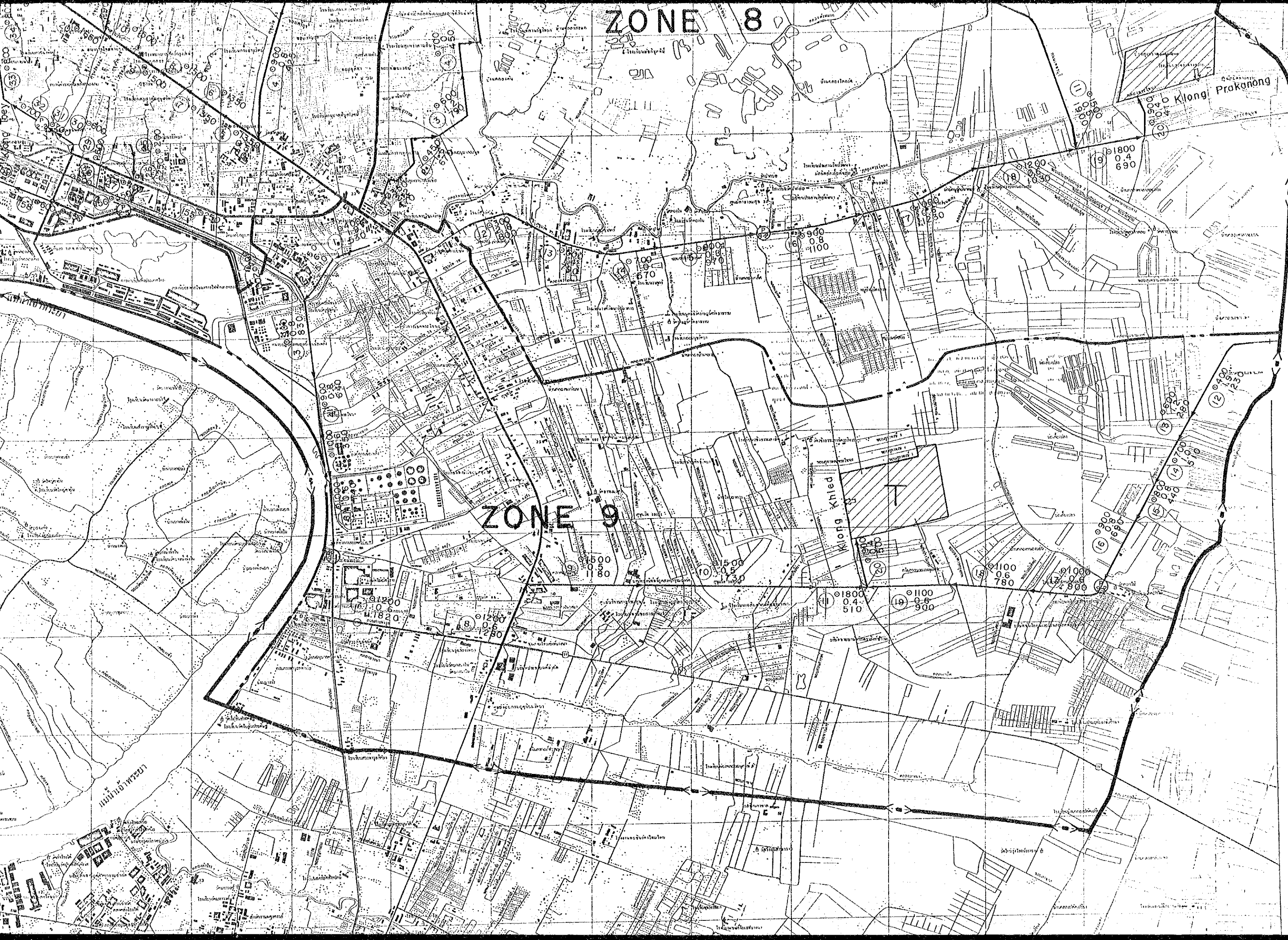
ZONE 10

ZONE 3

Chao Phraya River



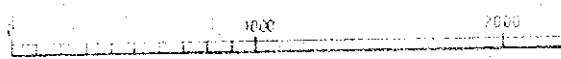
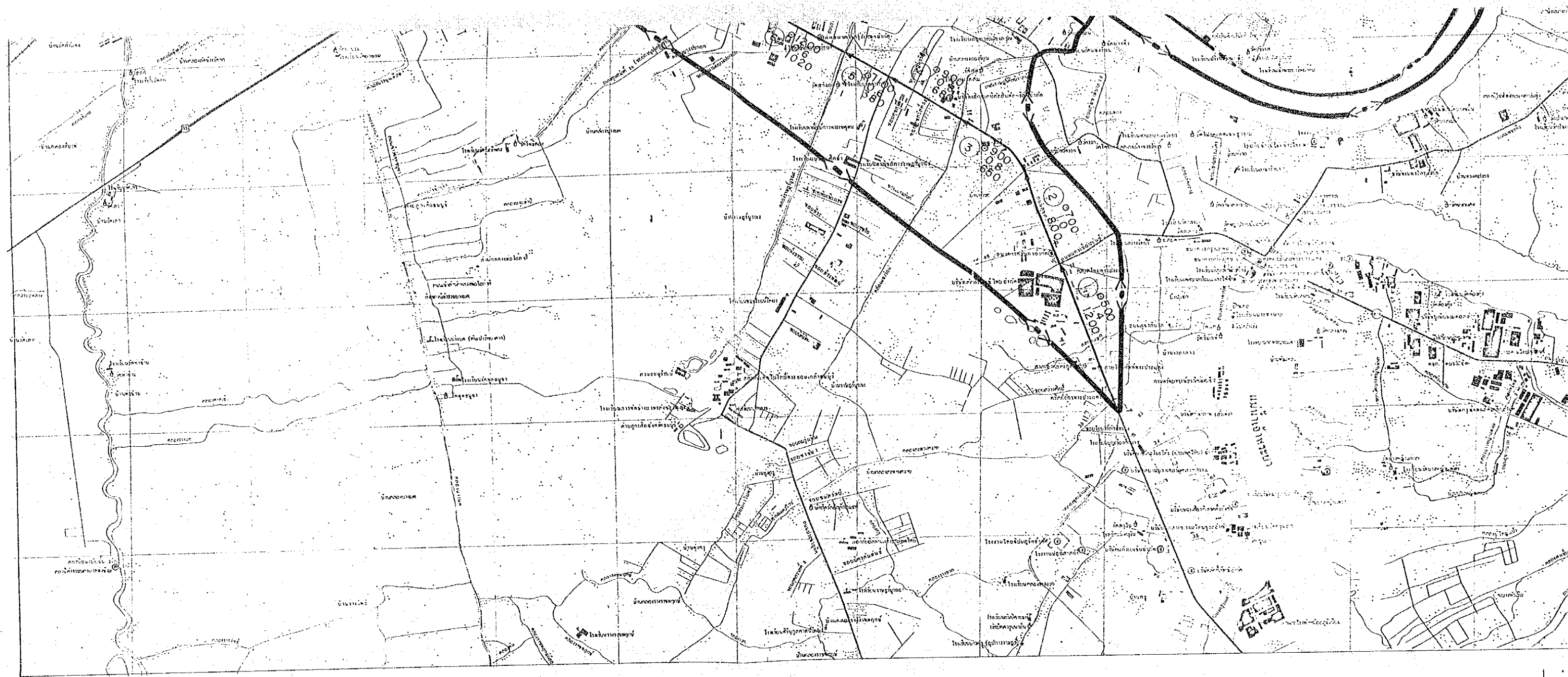
ZONE 8

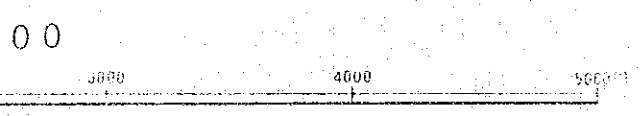
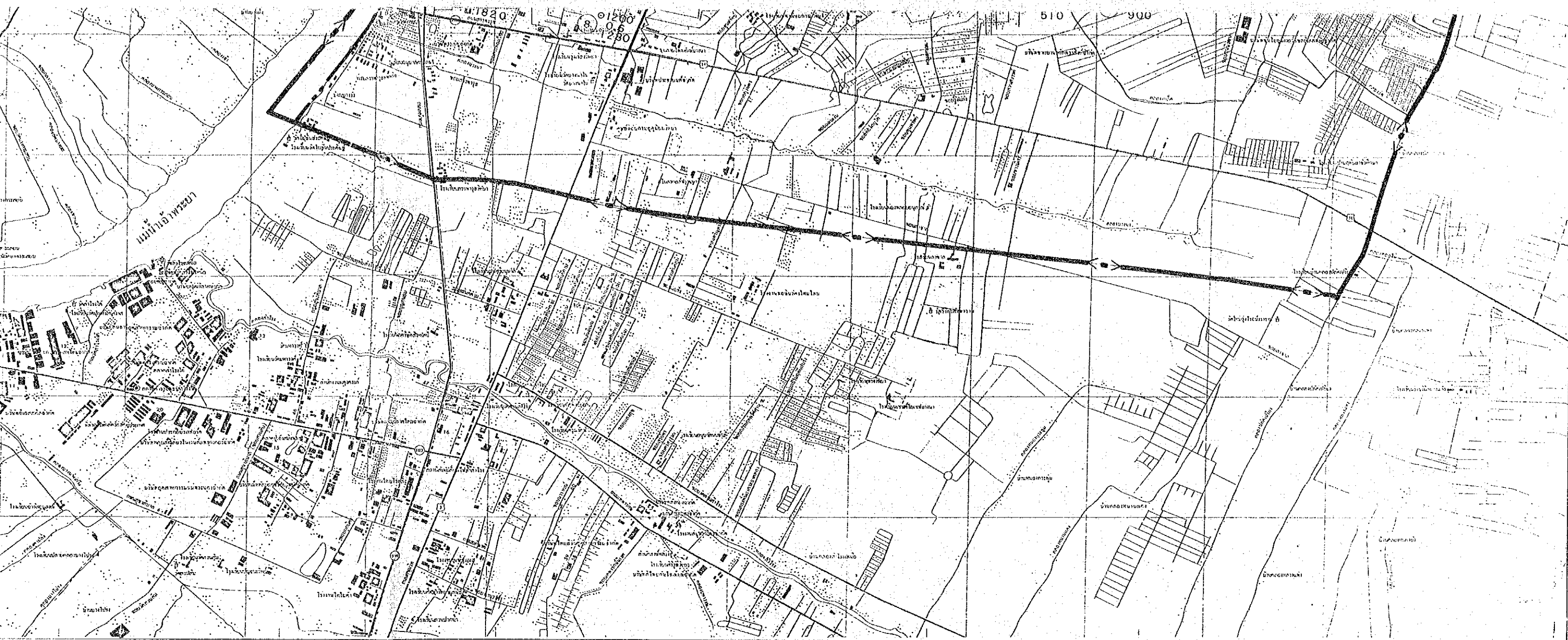


ZONE 9

Klong Prakanong

Klong Khied





- Boundary of Master Plan Area
- Boundary of Zone
- Proposed Trunk Sewer
- Existing Trunk Sewer
- (18) Sewer NO.
- $\phi 1200$ Diameter (mm)
- 0.6 Slope (‰)
- 1030 Length (m)

LEGEND

- (P-2) Pumping Station
- Treatment Plant
- Effluent Outfall
- Temporary Combined System Area

JICA